



DE VALK
YACHT BROKERS



ASANTE SLOOP 50



DE VALK
YACHT BROKERS

ASANTE SLOOP 50

BROKER'S COMMENTS

Built by Aluminium Yachtwerft Kuenemund with an aluminium mast from Gross, you can see and admire the excellent craftsmanship in every detail. She is fully equipped and completely prepared for a atlantic crossing. A fast ocean going yacht for sale. She is directly available and ready to go. The Asante Yacht can be viewed on appointment in Portimao.

Reinoud Bicker Caarten

SPECIFICATIONS

Dimensions	14.90 x 4.20 x 1.90 (m)	Builder	Aluminium Yachtwerft Kuenemund GmbH
Built	1997	Cabins	3
Material	Aluminium	Berths	6
Engine(s)	1 x MAN 6 cylinder diesel	Hp/Kw	90.00 (hp), 66.24 (kw)
Asking price	€ 220.000 (VAT Paid)	Lying	at sales office

CONTACT

Sales office	De Valk Portugal	Telephone	+351 308 812321
Address	Edifício Administrativo - Ponta da Areia 8500 - 345 Portimão PT	E-mail	portugal@devalk.nl

DISCLAIMER

These particulars are given in good faith as supplied but cannot be guaranteed.



ASANTE SLOOP 50

GENERAL

Model	ASANTE SLOOP 50
Type	sailing yacht
LOA (m)	14,90
LWL (m)	14,30
Beam (m)	4,20
Draft (m)	1,90
Air draft (m)	20,00
Headroom (m)	1,90
Year built	1997
Builder	Aluminium Yachtwerft Kuenemund GmbH
Country	Germany
Designer	Asante
Displacement (t)	15
Ballast (tonnes)	7
Gross tonnage	18
CE norm	A
Hull material	aluminium
Hull colour	Aluminium
Hull thickness (mm)	12mm, 8mm, 6mm
Hull shape	round-bilged
Keel type	fin keel
Superstructure material	aluminium
Deck plate thickness (mm)	4mm
Deck material	aluminium
Deck finish	non-skid paint Allgrip
Superstructure deck finish	paint
Cockpit deck finish	synthetic teak
Antifouling (year)	completely sandblasted new primer, 2 layers epoxy and 2 layers of anti fouling 2022
Dorades	2
Window frame	aluminium



ASANTE SLOOP 50

Window material	tempered glass
Deckhatch	Lewmar
Portholes	aluminium 4
Insulation	foam Plates
Fuel tank (litre)	aluminium 450
Fuel tank 2 (litre)	aluminium 450
Level indicator (fuel tank)	yes
Freshwater tank (litre)	polyethylene 2x 400L
Level indicator (freshwater)	yes
Blackwater tank (litre)	polyethylene 2x 80L
Blackwater tank extraction	deck extraction + pump
Wheel steering	hydraulic
Outside helm position	hydraulic
Emergency tiller	yes
More info on paintwork	new 8/2022, primer, 2x epoxy, 2x anti fouling

ACCOMMODATION

Cabins	3
Berths	6
Interior	mahogany Mahogany and oak
Floor	woodprint
Open cockpit	yes
Doghouse	fixed aluminium and tempered glass
Headroom saloon (m)	1,90 to 1,85
Heating	diesel ducted hot air Eberspaeger
Navigation center	in saloon
Chart table	yes
Aft Cabin	2x double bed
Dinette	yes
Dinette to convert into berth	yes
Galley	yes



ASANTE SLOOP 50

Countertop	stainless steel
Sink	stainless steel
Cooker	calor gas 3 burner
Oven	yes
Fridge	60L
Freezer	60L
Hot water system	220V + engine
Water pressure system	electrical
Kettle	yes
Hot water tap	yes
Ice maker	yes
Crockery	yes
Owners cabin	v-bed In bow
Bed length (m)	2,05 x 2,40
Wardrobe	hanging and shelves
Bathroom	en suite
Toilet	en suite
Toilet system	vacuum
Wash basin	in the bathroom
Shower	en suite
Guest cabin 1	double bed
Bed length (m)	2,0 x 1,30
Wardrobe	hanging and shelves
Bathroom	shared
Toilet	shared
Toilet system	vacuum
Wash basin	in the bathroom
Shower	On deck
Guest cabin 2	double bed
Bed length (m)	2,0 x 1,30
Wardrobe	hanging and shelves
Bathroom	shared



ASANTE SLOOP 50

Toilet	shared
Toilet system	vacuum
Wash basin	in the bathroom

MACHINERY

No of engines	1
Make	MAN
Type	6 cylinder
HP	90
kW	66.24
Fuel	diesel
Year installed	1997
Maximum speed (kn)	8
Cruising speed (kn)	6
Consumption (l/hr)	5,5
Range (nm)	920
Engine hours	2400
Engine cooling system	seawater
Drive	shaft
Engine controls	electrical
Gearbox	mechanical Twindisc
Bowthruster	electric
Exhaust	watercooled
Propeller type	feathering Varioprop
Propeller blades	bronze 3
Propeller shaft material	stainless steel
Shaft lubrication	water
Manual bilge pump	yes
Electric bilge pump	3x
Electrical installation	with inverter 24V-12V 12V/24V/220V
Start battery	2x 12V AGM new 2024



ASANTE SLOOP 50

Service battery	2x 12V AGM new 2025
Bowthruster battery	On starter battery
Windlass battery	On starter battery
Battery monitor	2x magnetronic
Battery charger	Victron 24v 60Amp
Inverter	Whisperpower
Wind generator	new 5/2022 Silentwind 24V 300W
Diode battery combiners	yes
Shorepower	with cable
Insulation transformer	yes
Extra info	New alternator on engine 10/2022

NAVIGATION

Compass	Classen & Path
Electric compass	Garmin
Multi control display	2x Garmin
Forw. looking depth sounder	Garmin
Windset	Garmin
VHF	Apelco
Autopilot	new 5/2022 Garmin hydraulic
Radar	new 5/2022 Garmin
GPS	new 5/2022 Garmin
Radar/GPS/plotter	new 5/2022 Garmin
Electronic chart(s)	on tablet Navionics
EPIRB	yes
Navigation lights	LED

EQUIPMENT

Fixed windscreen	Tempered glass
Fixed hardtop	Aluminium
Bimini	new 9/2022



ASANTE SLOOP 50

Cockpit cushions	8
Cockpit table	yes
Boarding ladder	stainless steel
Deck shower	yes
Anchor	Delta 45kg
Anchor chain	80m galvanized steel 10mm
Anchor 2	yes
Anchor chain	10m chain 20m line
Chain counter	Markings
Windlass	electrical
Deck wash	yes
Dinghy	inflatable New 7/2022 Quicksilver 2,3m
Outboard	Evinrude 2stroke 4hp
Outboard support	yes
Davits	aluminum Vetus
Davits controls	manual
Sea railing	stainless steel
Grab rail (superstructure)	wood
Railing side opening gates	2x
Pushpit	yes
Pulpit	yes
Life raft	container Plastimo
Life raft (pers)	6pax
Last life raft survey	2022
Lifejackets	6x
Safety harness	yes
Lifebuoy	Rescue light
Safety lines on deck	yes
Horn	yes
Radar reflector	yes
Fenders	6
Mooring lines	6



ASANTE SLOOP 50

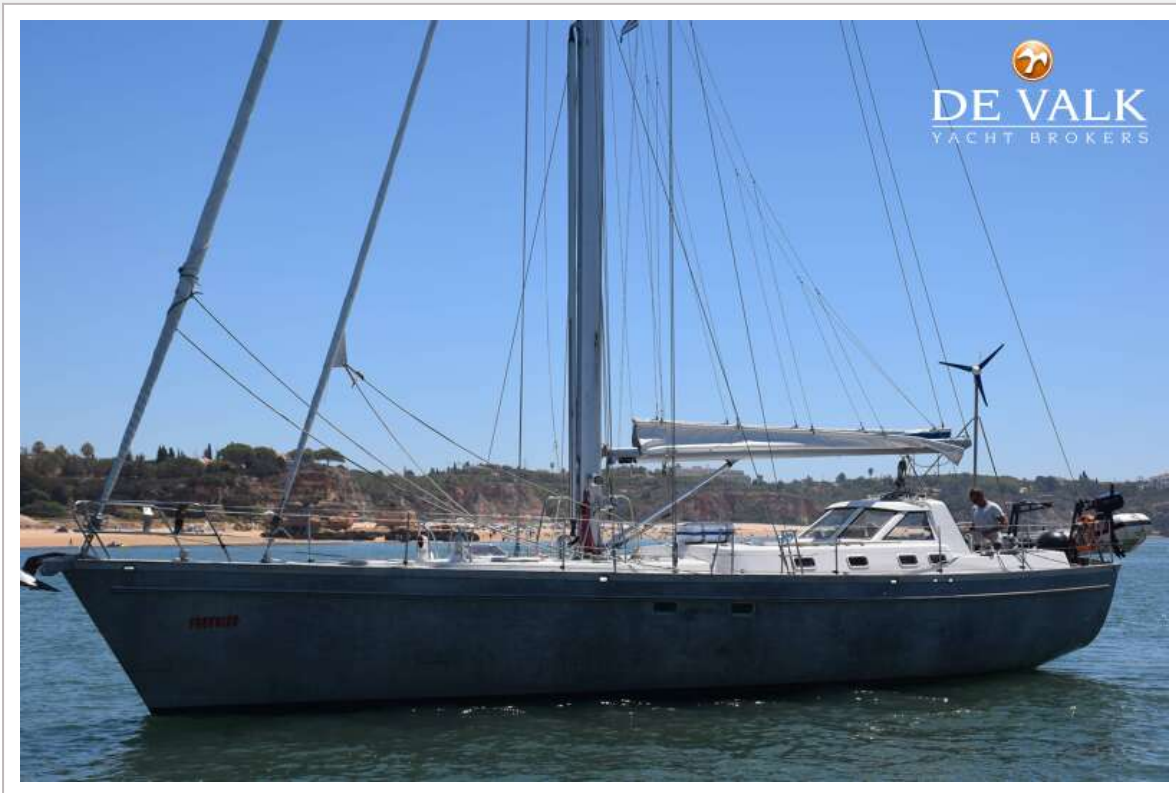
Spare parts	yes
Tools	yes
Radio-cd player	yes
Cockpit speakers	yes
Speakers in salon	yes
Clock - barometer	yes
Fire extinguisher	3x 1kg

RIGGING

Rigging	cutter
Standing rigging	wire Stainless steel new 5/2022
Brand mast	Gross
Material mast	aluminium
Spreaders	2x2
Mainsail	dacron 55m2
Mainsail cover	Lazy bag + lazy jacks
Battcars	yes
Fully battened mainsail	2x full at top end 2x partial
Jib	on furler 40m2
Genoa	dacron 72m2
Genoa furler	Topreff stainless steel Maintenance free
Genoa cover	hose
Gennaker	yes
Reefing System	quick-one-line-reefing
Primary sheet winch	2x Andersen 58ST
Secondary sheet winch	2x Andersen 46ST
Halyard winches	3x Andersen 40ST
Reefing winch	yes
Isolated backstay	yes



ASANTE SLOOP 50



ASANTE SLOOP 50



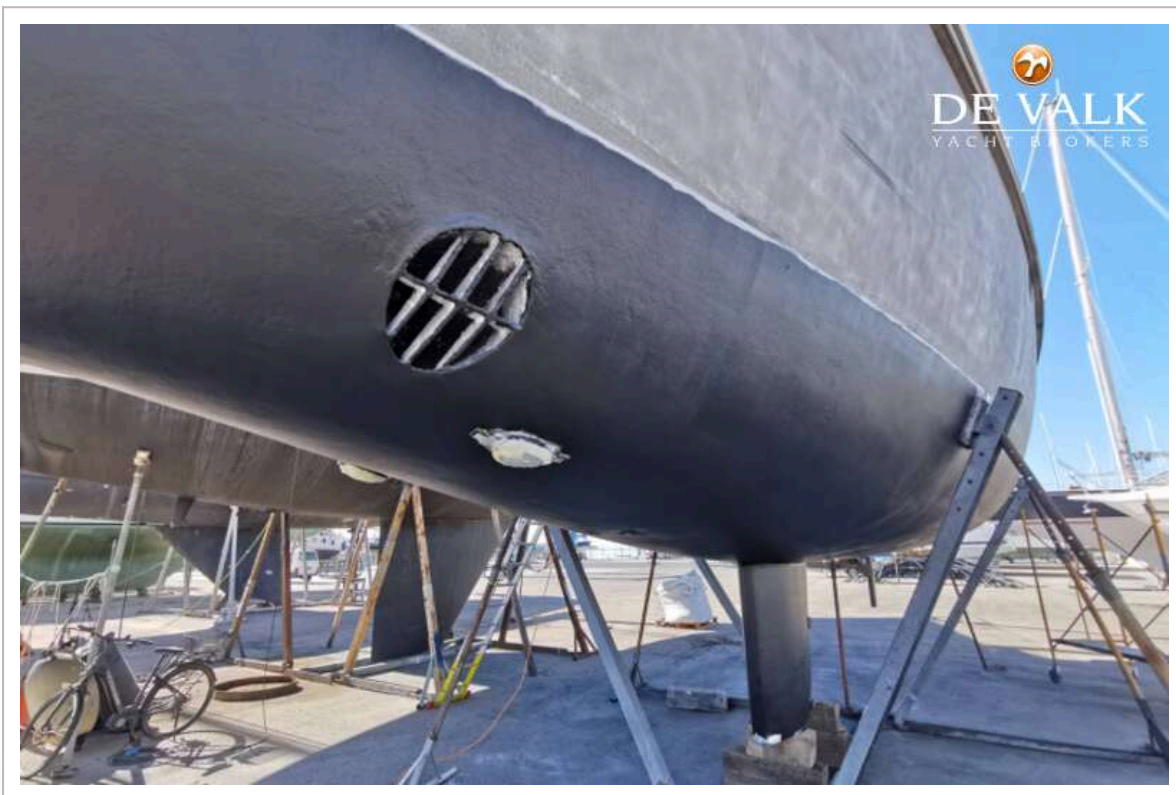
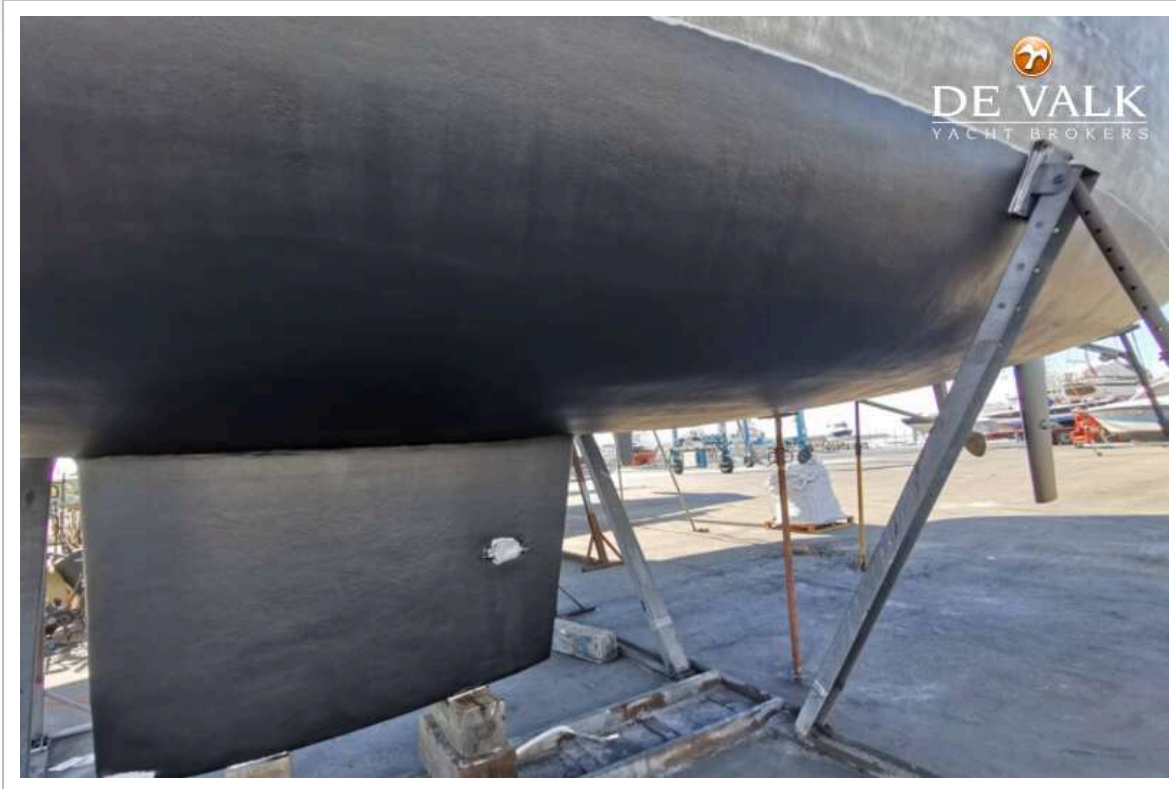
ASANTE SLOOP 50



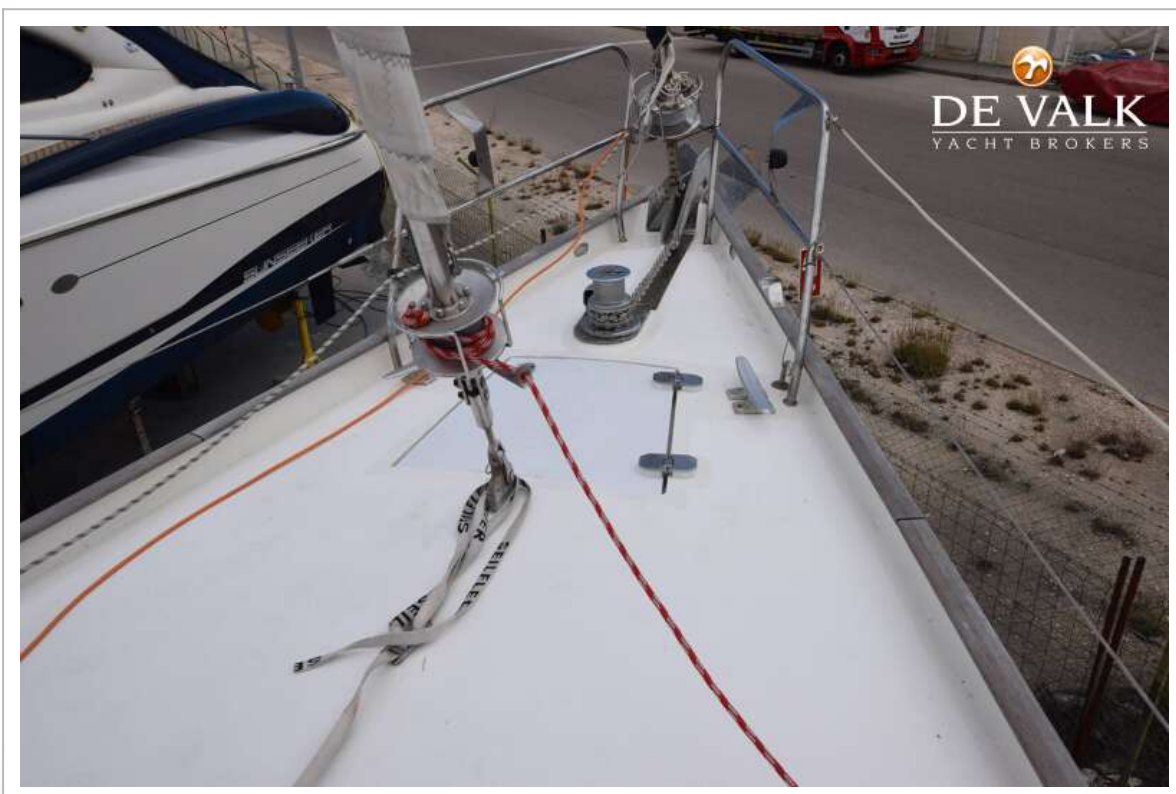
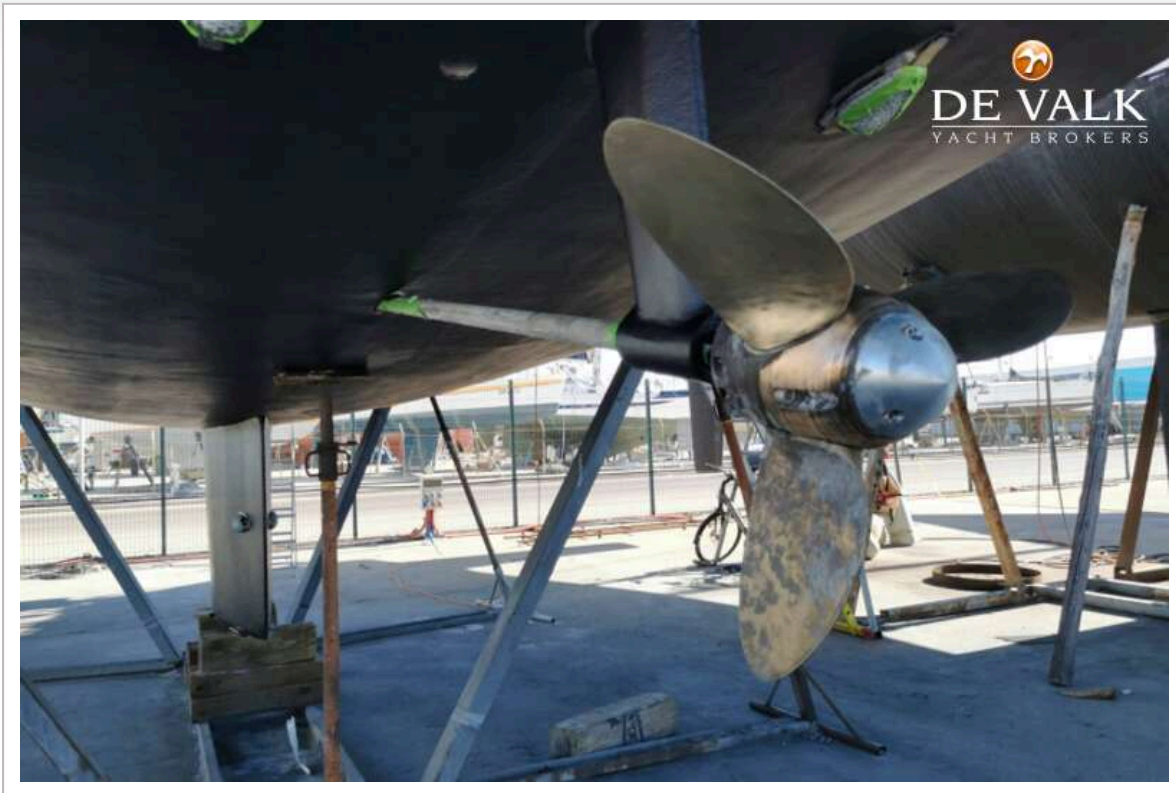
ASANTE SLOOP 50



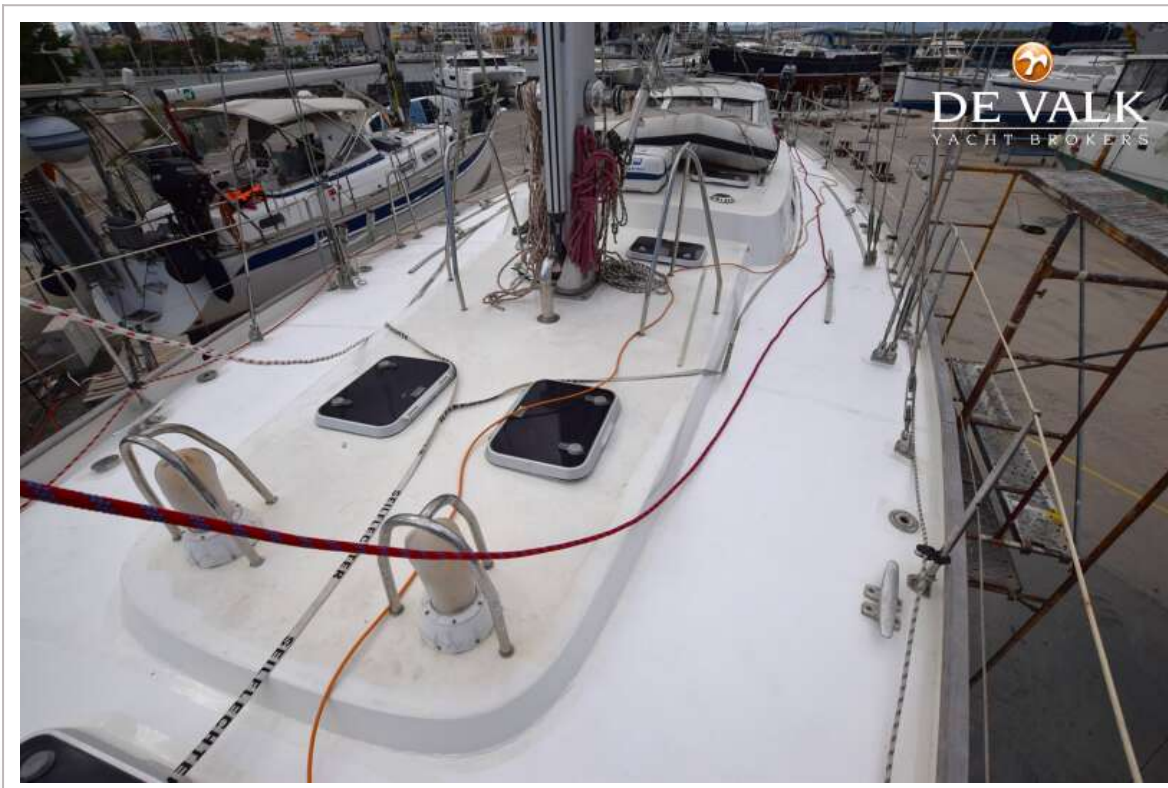
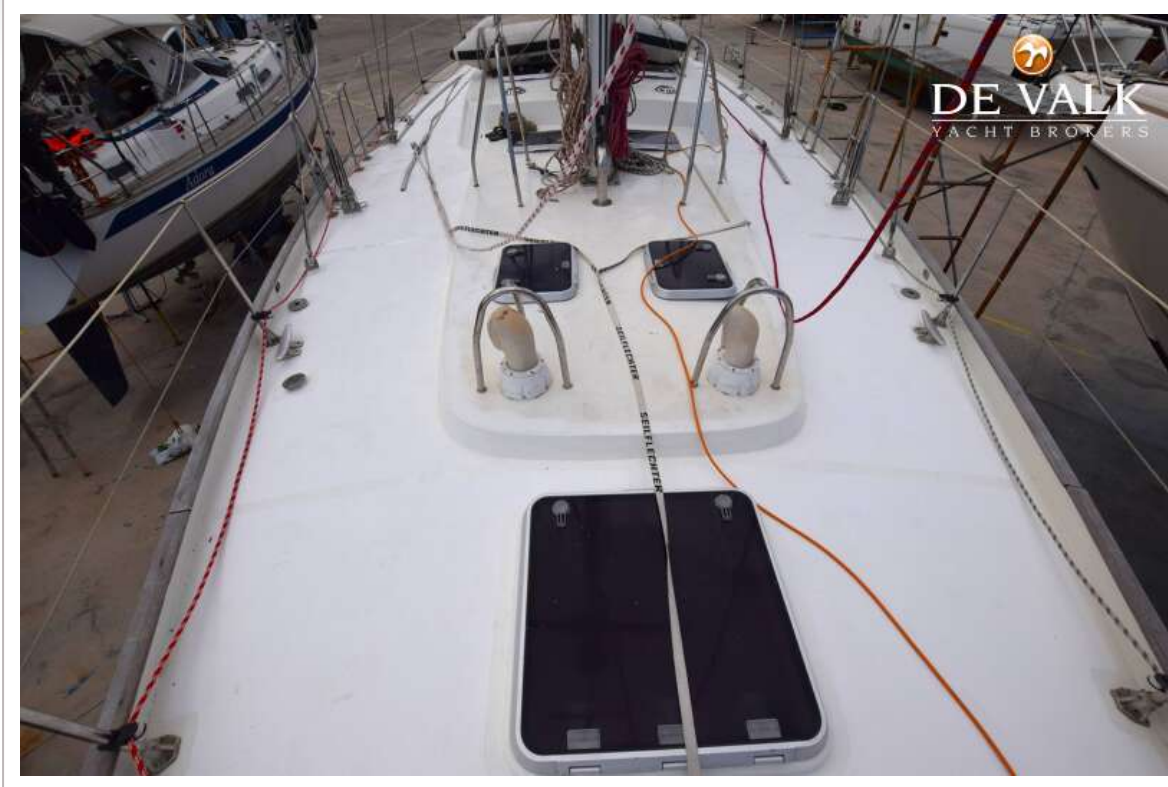
ASANTE SLOOP 50



ASANTE SLOOP 50



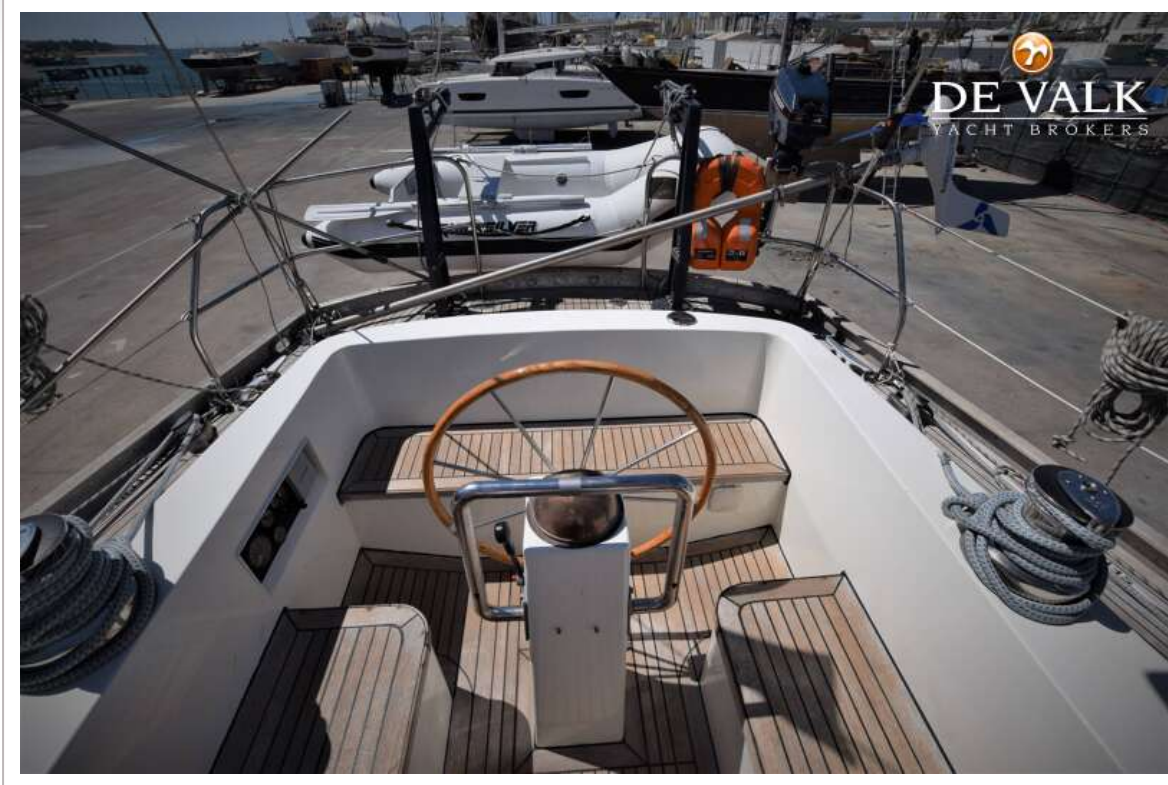
ASANTE SLOOP 50



ASANTE SLOOP 50



ASANTE SLOOP 50



ASANTE SLOOP 50



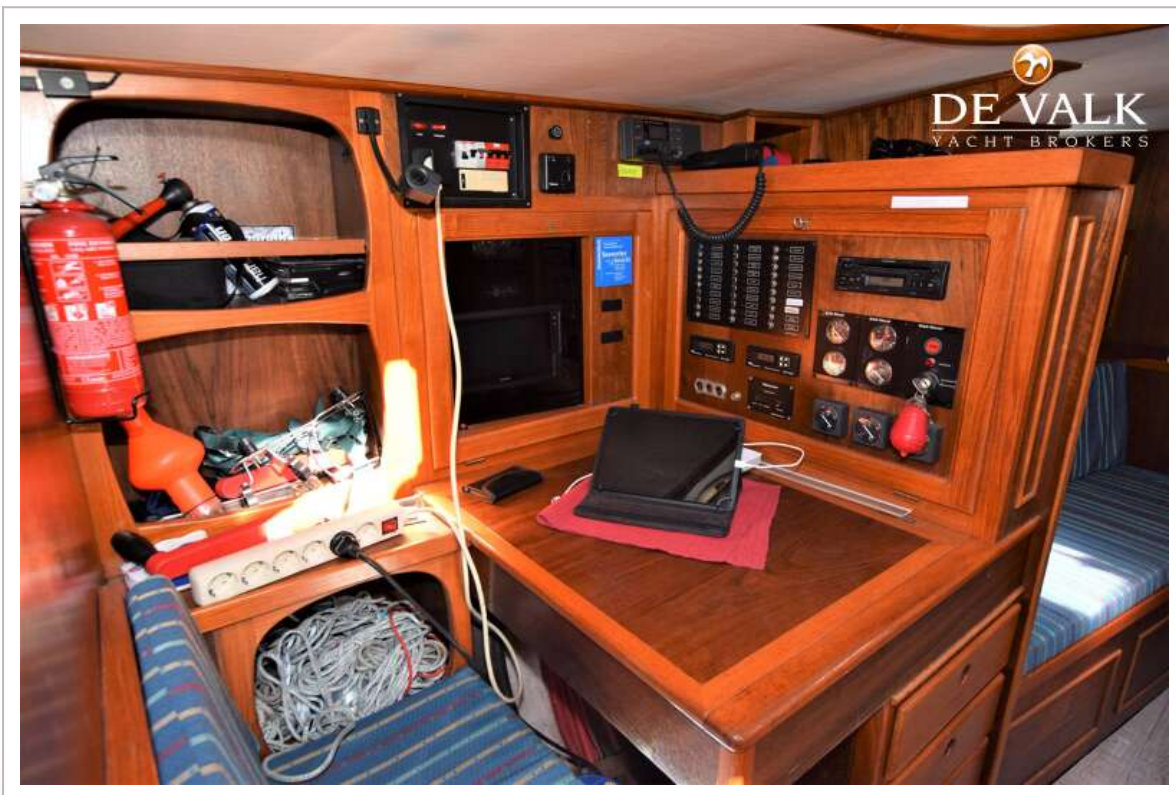
ASANTE SLOOP 50



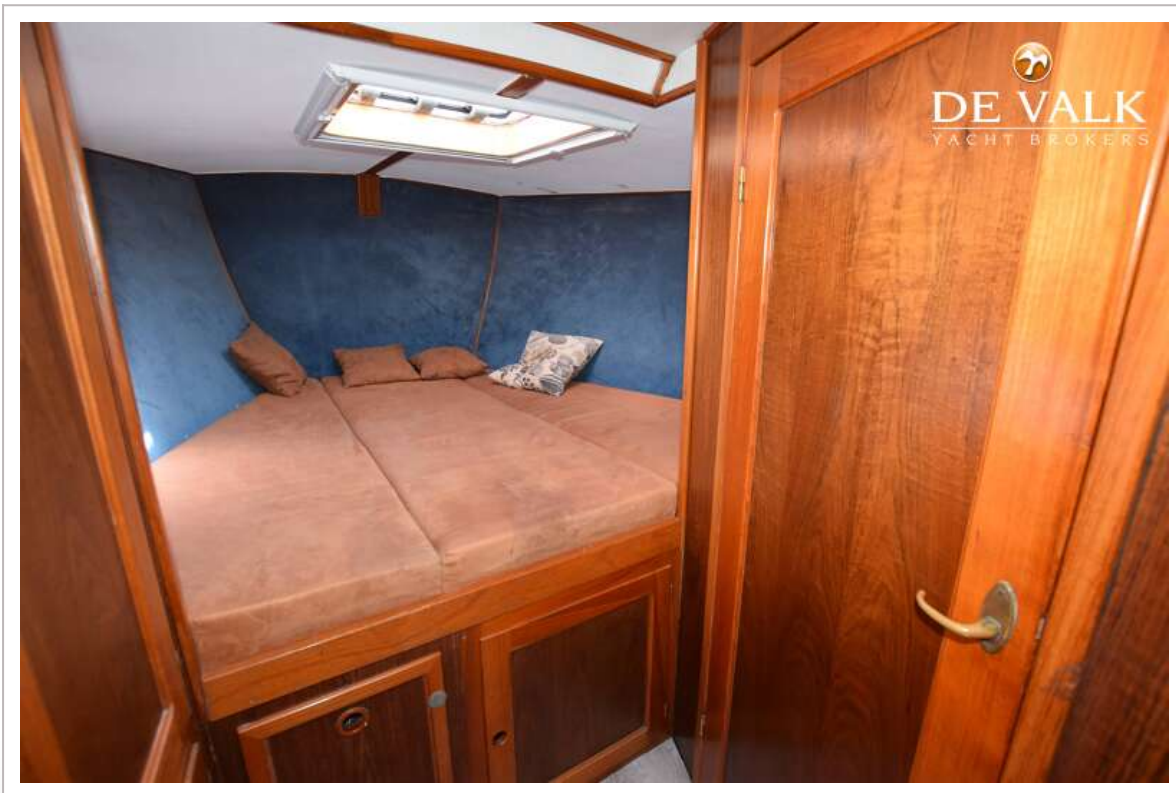
ASANTE SLOOP 50



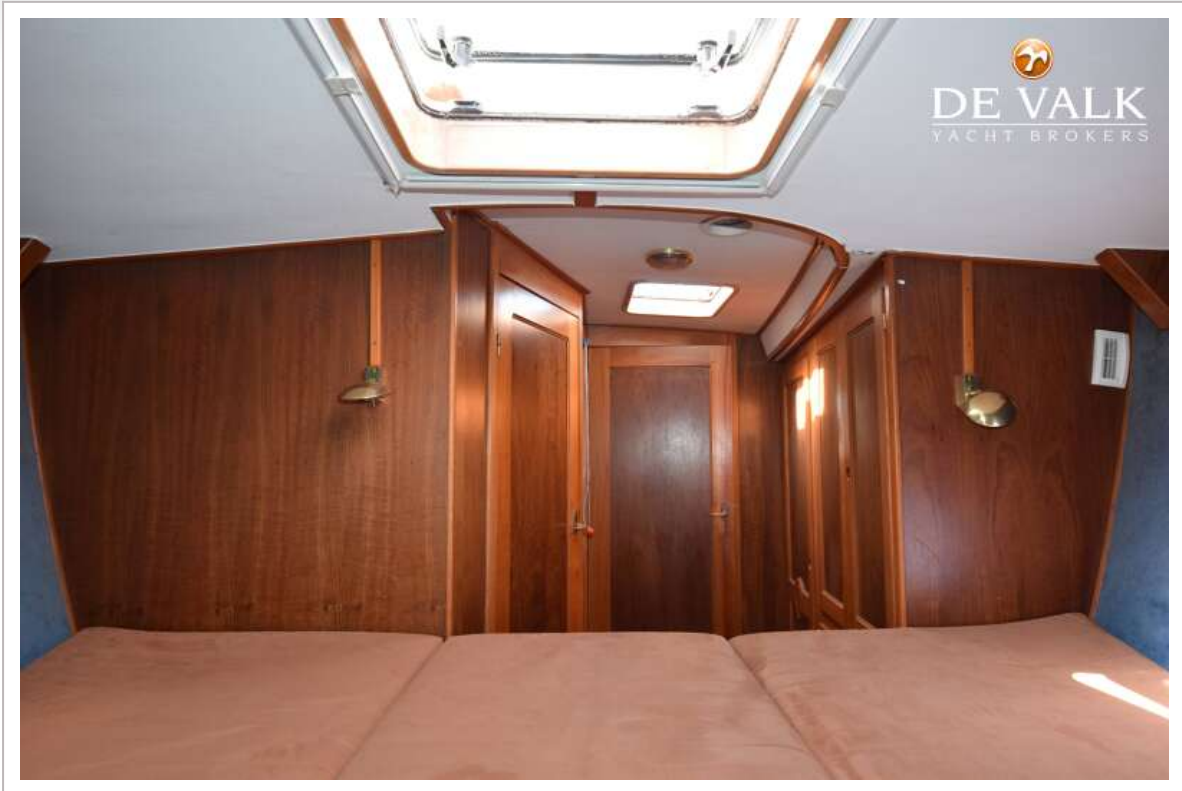
ASANTE SLOOP 50



ASANTE SLOOP 50



ASANTE SLOOP 50



ASANTE SLOOP 50



ASANTE SLOOP 50

