



DE VALK  
YACHT BROKERS



RIJNLANDVLET 1500 AK



DE VALK  
YACHT BROKERS

## BROKER'S COMMENTS

Rijnlandvlet 1500 Pilothouse, built by Shipyard de Volharding in Zwammerdam, a yard with over 120 years of experience in building steel ships. "Zefir" is a well maintained and fully equipped motor yacht; Double glazing, Kabola Central heating (floor heating in the saloon), Air Conditioning, Hydraulic bow and stern thruster, Generator (8Kva) in short, a great motor yacht for long trips and possibly permanent living on board. Make an appointment for an inspection

*Pieter Bosma*

## SPECIFICATIONS

<b>Dimensions</b>	14.99 x 4.75 x 1.40 (m)	<b>Builder</b>	Scheepswerf De Volharding BV Zwammerdam
<b>Built</b>	2003	<b>Cabins</b>	2
<b>Material</b>	Steel	<b>Berths</b>	4
<b>Engine(s)</b>	1 x Vetus Deutz DT64452A diesel	<b>Hp/Kw</b>	159.00 (hp), 117.02 (kw)
<b>Asking price</b>	sold (VAT )	<b>Lying</b>	at sales office

## CONTACT

<b>Sales office</b>	De Valk Sneek	<b>Telephone</b>	+31 515 42 80 30
<b>Address</b>	Zwolsmanweg 7 8606 KC Sneek The Netherlands	<b>E-mail</b>	sneek@devalk.nl

## DISCLAIMER

These particulars are given in good faith as supplied but cannot be guaranteed.



## GENERAL

<b>Model</b>	RIJNLANDVLET 1500 AK
<b>Type</b>	motor yacht
<b>LOA (m)</b>	14,99
<b>LWL (m)</b>	13,00
<b>Beam (m)</b>	4,75
<b>Draft (m)</b>	1,40
<b>Air draft (m)</b>	6,00
<b>Air draft min (m)</b>	3,95
<b>Headroom (m)</b>	2,05
<b>Year built</b>	2003
<b>Builder</b>	Scheepswerf De Volharding BV Zwammerdam
<b>Country</b>	The Netherlands
<b>Designer</b>	Scheepswerf De Volharding BV
<b>Displacement (t)</b>	32
<b>CE norm</b>	C
<b>Hull material</b>	steel
<b>Hull colour</b>	green
<b>Hull thickness (mm)</b>	5 mm
<b>Hull shape</b>	round-bilged
<b>Keel type</b>	long keel
<b>Bilge keels</b>	yes
<b>Superstructure material</b>	steel
<b>Superstructure (mm)</b>	5 mm
<b>Deck plate thickness (mm)</b>	4 mm
<b>Rubbing strake</b>	fender rope
<b>Deck material</b>	steel
<b>Deck finish</b>	teak
<b>Superstructure deck finish</b>	paint
<b>Dorades</b>	yes
<b>Window frame</b>	aluminium



<b>Window material</b>	double glazing
<b>Deckhatch</b>	yes
<b>Portholes</b>	yes
<b>Insulation</b>	foam
<b>Mast can be lowered</b>	hydraulic
<b>Fuel tank (litre)</b>	steel 2.650 Ltr in 2 tanks
<b>Level indicator (fuel tank)</b>	2x
<b>Freshwater tank (litre)</b>	stainless steel 1.800 ltr
<b>Level indicator (freshwater)</b>	yes
<b>Blackwater tank (litre)</b>	steel 350 Ltr
<b>Level indicator (blackwater)</b>	yes
<b>Blackwater tank extraction</b>	deck extraction + pump
<b>Greywater tank (litre)</b>	polyethylene 400 Ltr
<b>Level indicator (greywater)</b>	yes
<b>Wheel steering</b>	hydraulic
<b>Inside helm position</b>	yes
<b>Outside helm position</b>	with remote control
<b>More info on hull</b>	underwater ship sandblasted 2020
<b>More info on paintwork</b>	painted 2016
<b>Extra info</b>	Large storage (3 M3) accessible from the aftdeck

## ACCOMMODATION

<b>Cabins</b>	2
<b>Berths</b>	4
<b>Interior</b>	teak
<b>Floor</b>	teak and holly
<b>Aft deck</b>	yes
<b>Pilot house/deck saloon</b>	yes
<b>Headroom saloon (m)</b>	2.00 m
<b>Heating</b>	central heating Kabola B12 Tap, floor heating
<b>Air-conditioning</b>	reverse cycle airco Calpeda B-CM20E



Chart table	yes
Aft Cabin	yes
Opening door to aft deck	Teak
Galley	yes
Countertop	corian
Sink	Corian
Cooker	ceramic 4 burner AEG
Extractor	AEG
Microwave/oven combi	Bosch
Fridge	in the galley and in wheelhouse 2x
Freezer	in refrigerator
Hot water system	on central heating
Water pressure system	electrical
Owners cabin	French bed
Bed length (m)	2.00 m.
Wardrobe	hanging/drawers/shelves
Bathroom	en suite
Toilet	en suite
Toilet system	electric
Wash basin	in the bathroom
Shower	en suite
Guest cabin 1	twin single
Bed length (m)	1x 1,90 1x 2.00 m
Wardrobe	hanging/drawers/shelves
Bathroom	en suite
Toilet	en suite
Toilet system	electric
Wash basin	in the bathroom
Shower	en suite
Washing machine/dryer combi	Miele WT 2087 WPM



## MACHINERY

<b>No of engines</b>	1
<b>Make</b>	Vetus Deutz
<b>Type</b>	DT64452A
<b>HP</b>	159
<b>kW</b>	117.02
<b>Fuel</b>	diesel
<b>Year installed</b>	2003
<b>Maximum speed (kn)</b>	8,4
<b>Cruising speed (kn)</b>	7
<b>Consumption (l/hr)</b>	5
<b>Engine hours</b>	Ca 2500
<b>Engine cooling system</b>	freshwater heat exchanger
<b>Drive</b>	shaft
<b>Shaft seal</b>	yes
<b>Engine controls</b>	electrical MMC
<b>Gearbox</b>	hydraulic ZF HSW 450
<b>Bowthruster</b>	hydraulic Hydrosta 8 Pk
<b>Sternthruster</b>	hydraulic Hydrosta 15 Pk
<b>Exhaust</b>	watercooled
<b>Propeller type</b>	fixed 24x 16"
<b>Propeller blades</b>	3
<b>Propeller shaft material</b>	steel 24 mm
<b>Shaft lubrication</b>	grease
<b>Electric bilge pump</b>	3x
<b>Electrical installation</b>	24/220V
<b>Generator</b>	silent separator Westerbeke 8KVa
<b>Running hours generator</b>	Ca 1900
<b>Batteries</b>	yes
<b>Start battery</b>	Mastervolt 200Ah
<b>Service battery</b>	8x AGM 6V total 830 Ah (2014)



Generator battery	Optima
Battery monitor	Mastervolt
Battery charger	Mastervolt 24/75
Inverter	Mastervolt mass Sine 24/2500
Diode battery combiners	Mastervolt
Shorepower	with cable

## NAVIGATION

Electric compass	Simrad
Depth sounder	Simrad
Windset	Simrad
VHF	Simrad RS8300
Autopilot	Simrad
Rudder angle indicator	Robertson AP20
Radar	Simrad 4G
Radar/GPS/plotter	Simrad NSS12
Electronic chart(s)	yes
AIS transceiver	AIS- A Simrad
Navigation lights	yes
Searchlight	yes

## EQUIPMENT

Bimini	yes
Winter cover	yes
Bathing platform	yes
Boarding ladder	yes
Bow ladder	yes
Deck shower	yes
Anchor	Pool
Anchor chain	50 mtr
Windlass	hydraulic



Deck wash	yes
Davits	stainless steel
Davits controls	manual
Sea railing	stainless steel
Grab rail (superstructure)	yes
Railing side opening gates	yes
Lifebuoy	yes
Wiper	3x
Horn	electric
Fenders	yes
Mooring lines	yes
TV	Philips
Radio-cd player	3x
Speakers in salon	yes
Speakers in cabin	yes
Clock - barometer	yes
Fire extinguisher	yes
Auto extinguisher system	Fire Pro





# RIJNLANDVLET 1500 AK



# RIJNLANDVLET 1500 AK



# RIJNLANDVLET 1500 AK



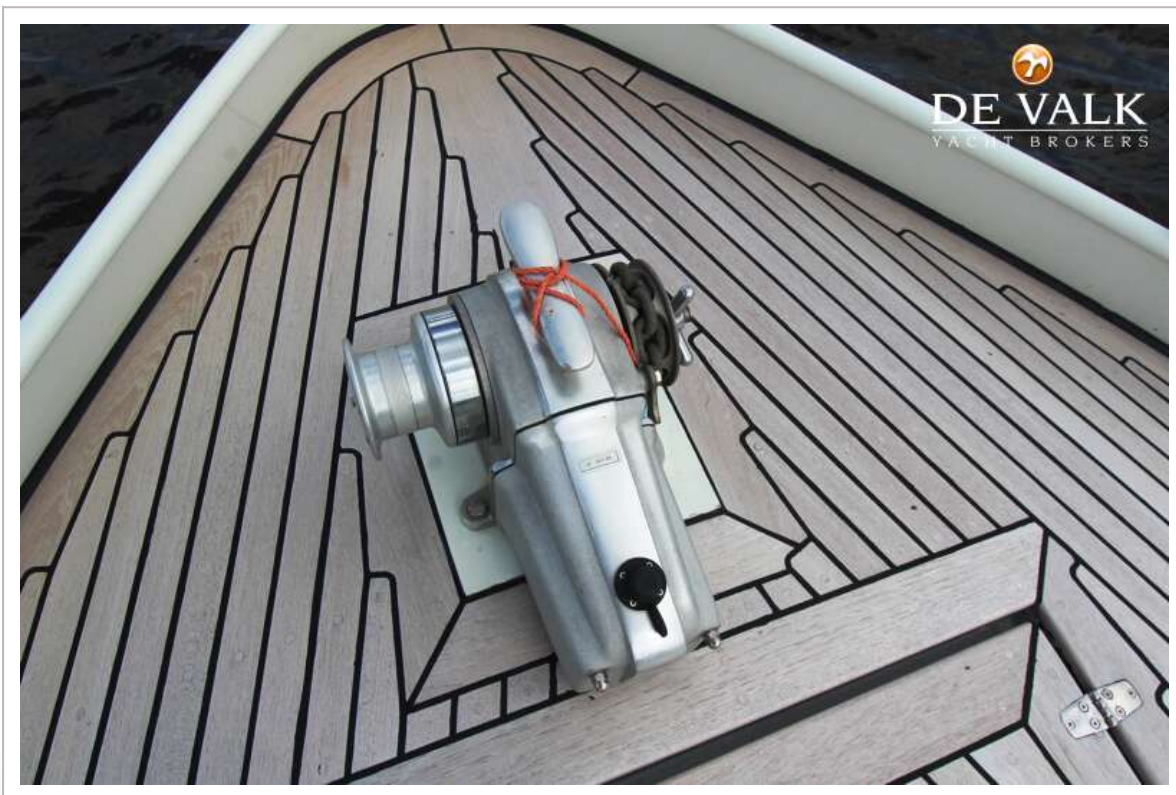
# RIJNLANDVLET 1500 AK



# RIJNLANDVLET 1500 AK



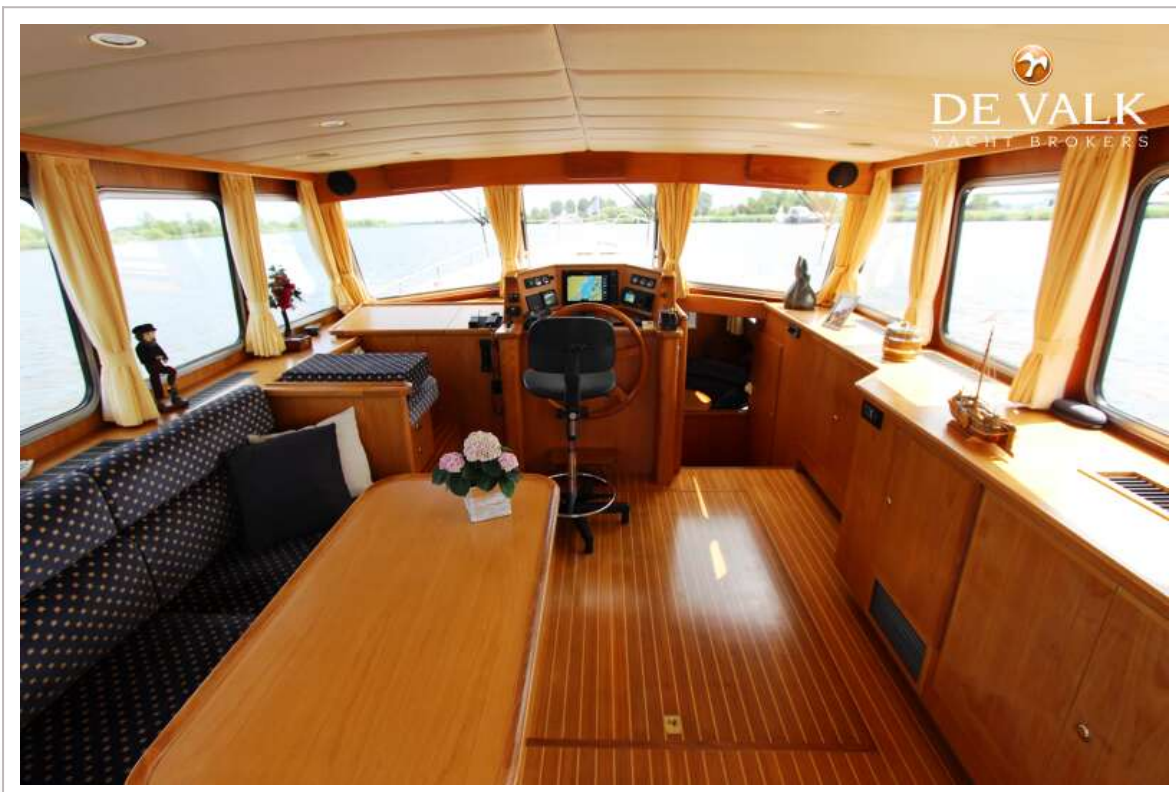
# RIJNLANDVLET 1500 AK



# RIJNLANDVLET 1500 AK



# RIJNLANDVLET 1500 AK





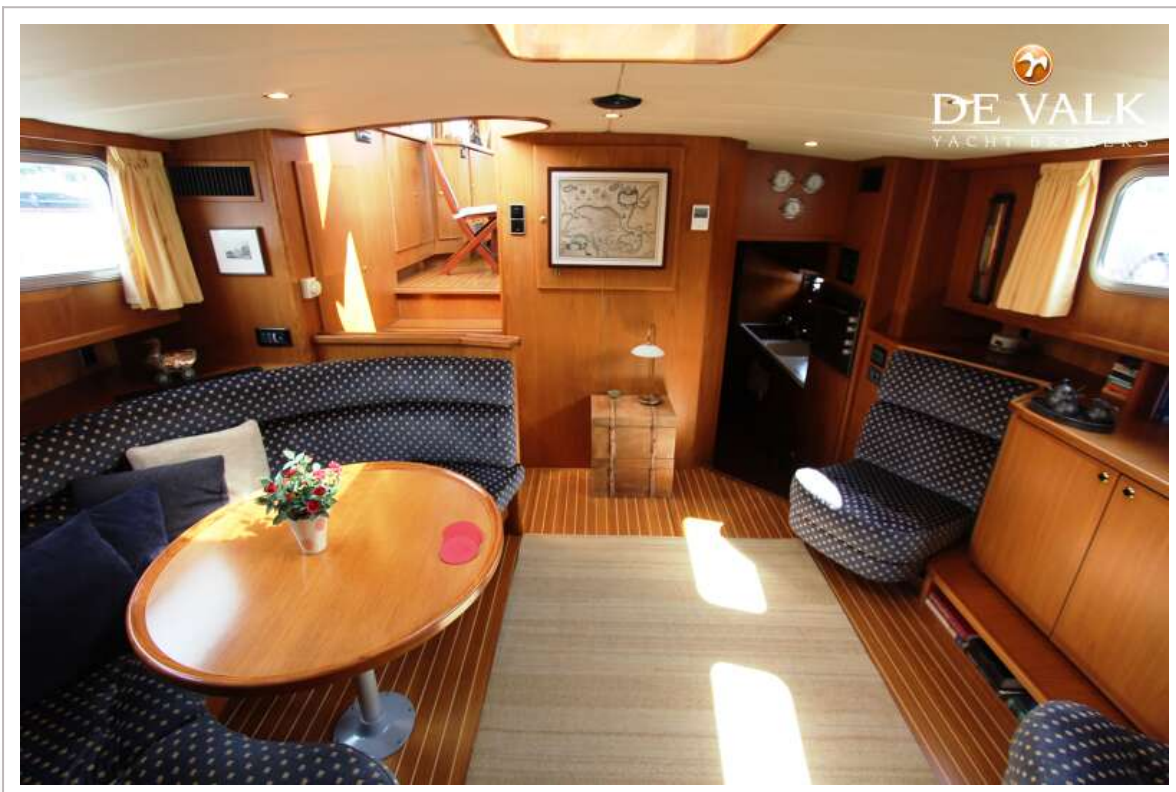
# RIJNLANDVLET 1500 AK



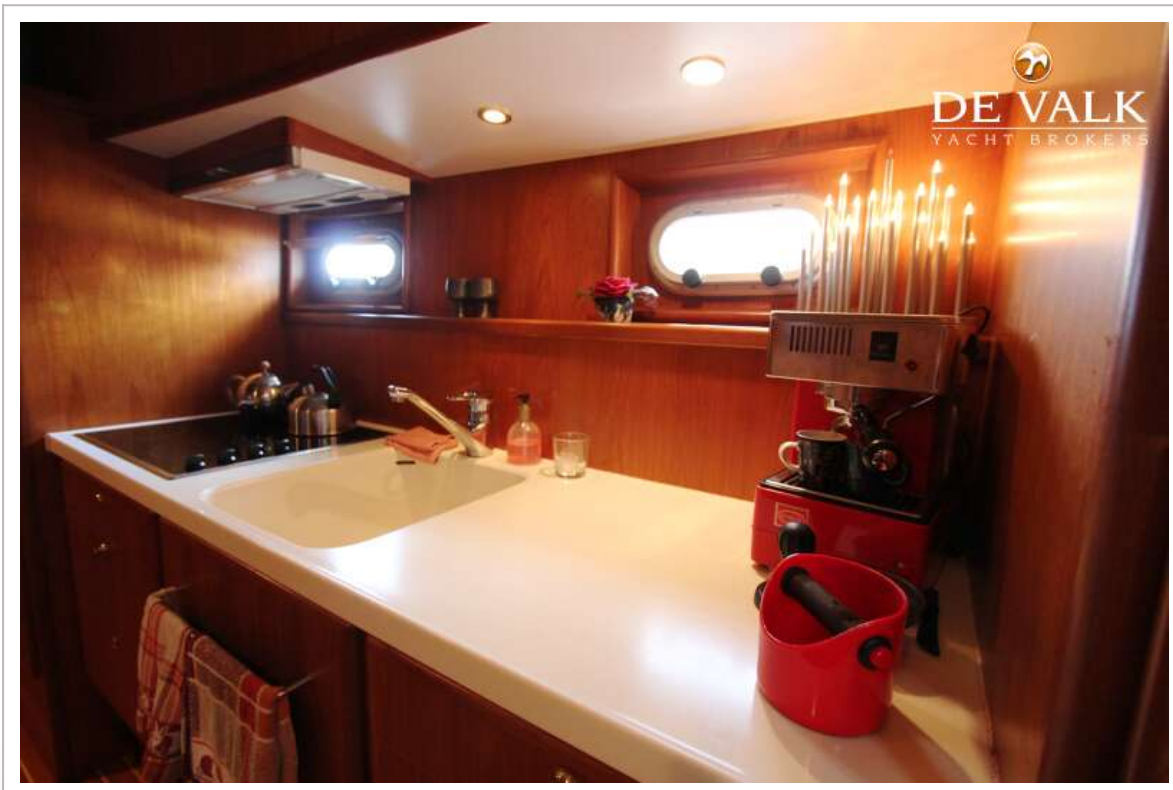
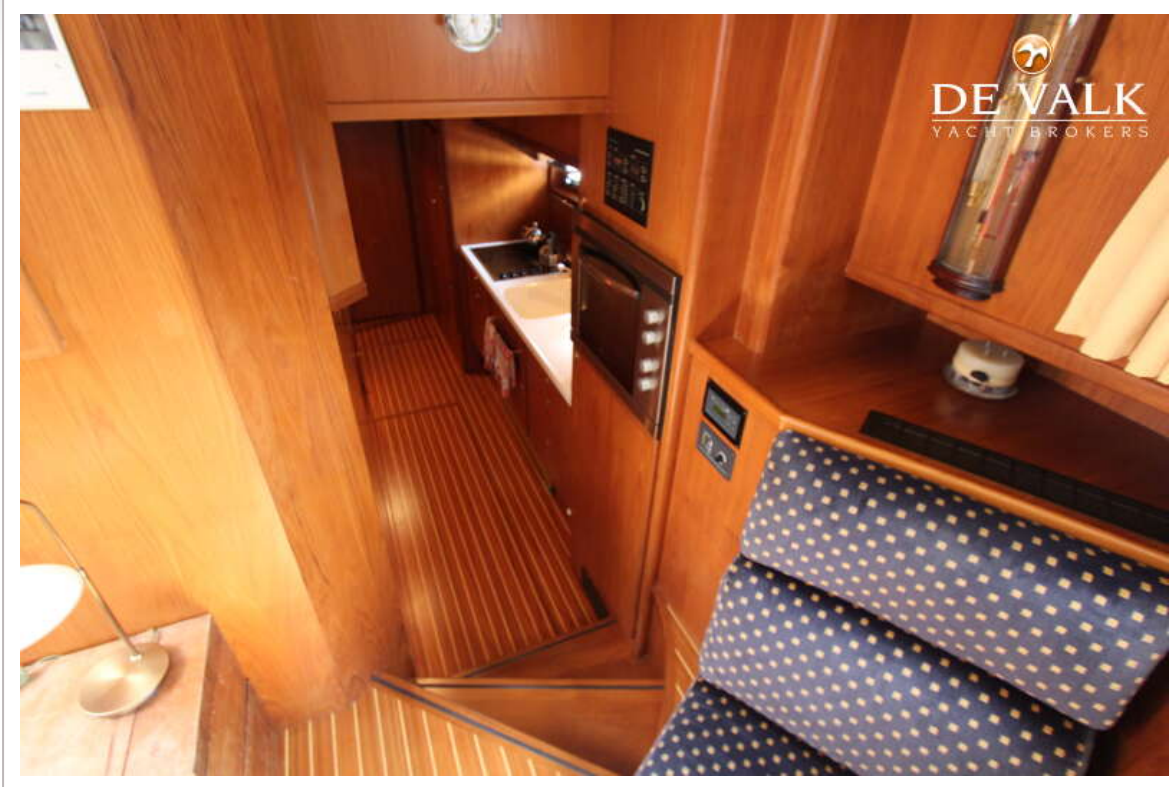
# RIJNLANDVLET 1500 AK



# RIJNLANDVLET 1500 AK



# RIJNLANDVLET 1500 AK

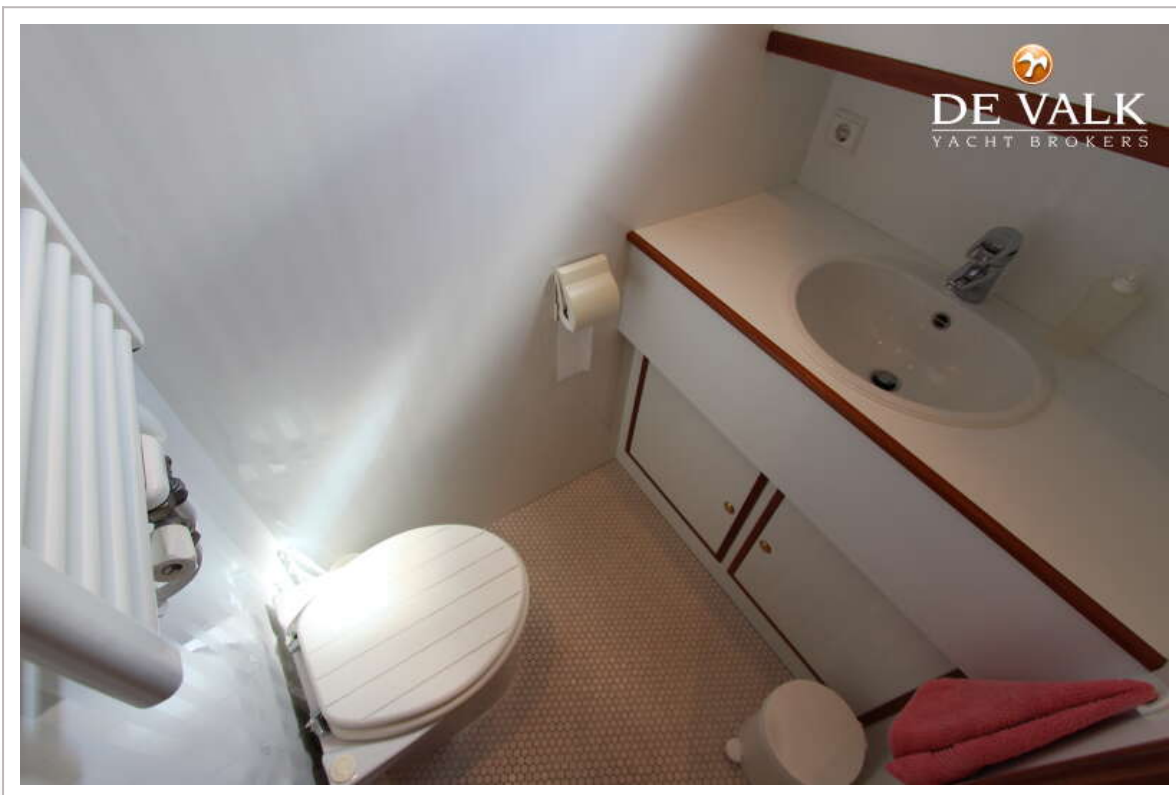




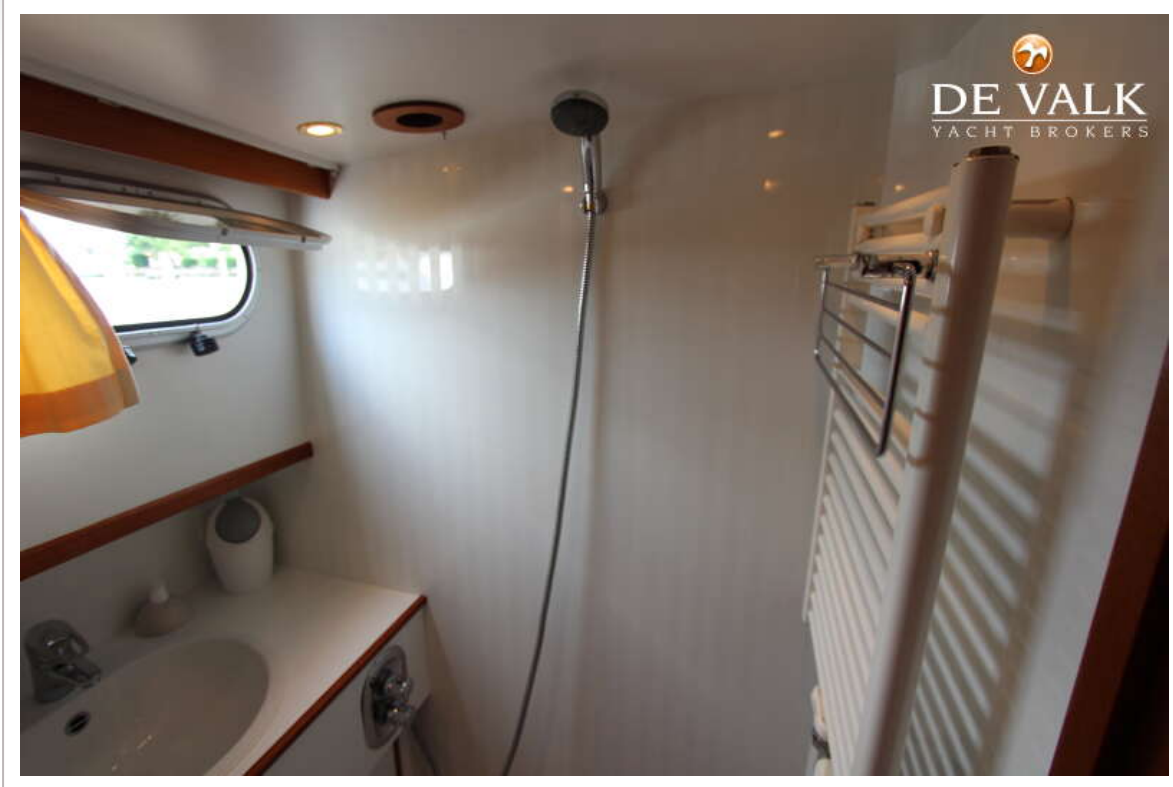
# RIJNLANDVLET 1500 AK



# RIJNLANDVLET 1500 AK

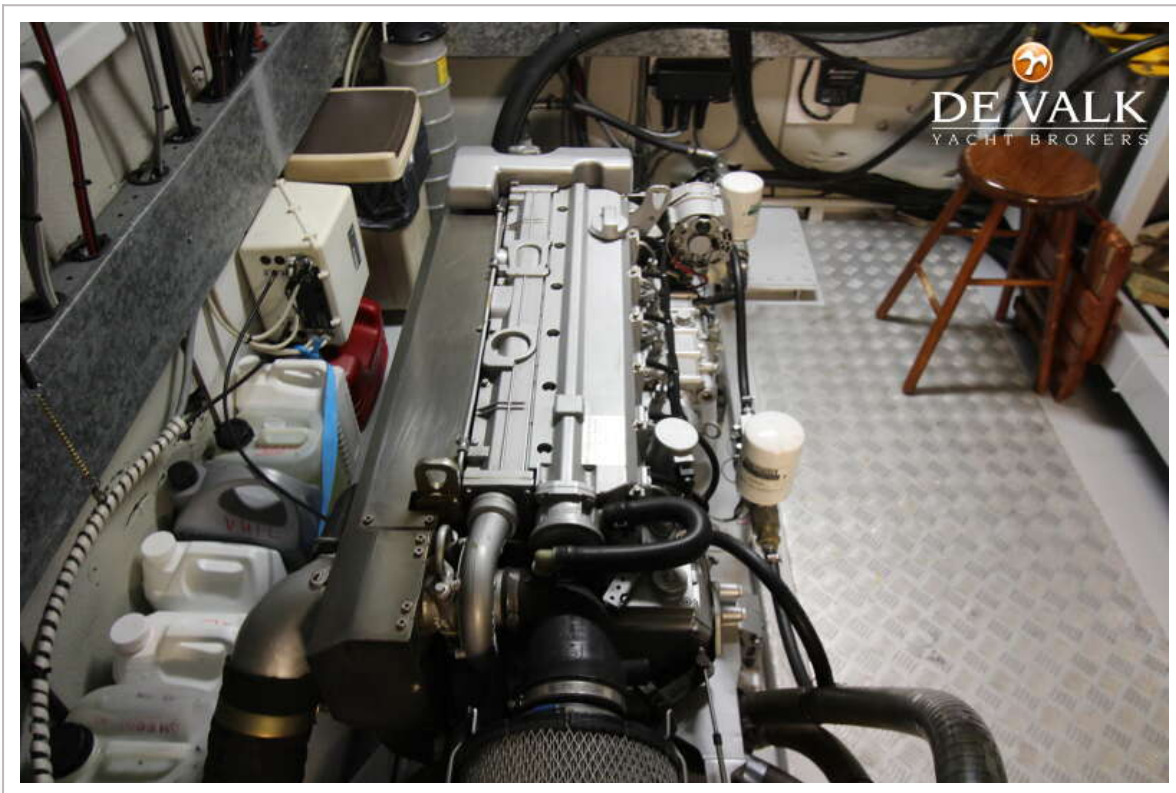


# RIJNLANDVLET 1500 AK





# RIJNLANDVLET 1500 AK



# RIJNLANDVLET 1500 AK

