



DE VALK
YACHT BROKERS



COMFORT 32



DE VALK
YACHT BROKERS

COMFORT 32

BROKER'S COMMENTS

This exceptionally well maintained Comfort 32 Baetar (SE) offers fantastic sailing properties and lots of comfort on board. She can accommodate 6 people. The owner, an experienced yachtman & sailor, has taken part successfully in many yacht races & regattas. Now he reluctantly has to complete his sailing life & adventure of over 40 years.

Sofia Iliia-Salvanou

SPECIFICATIONS

Dimensions	9.50 x 3.25 x 1.70 (m)	Builder	Comfortbaetar AB, Sweeden
Built	1981	Cabins	2
Material	GRP	Berths	6
Engine(s)	1 x YANMAR diesel	Hp/Kw	29.00 (hp), 21.34 (kw)
Asking price	sold (VAT)	Lying	at sales office

CONTACT

Sales office	De Valk Corfu	Telephone	(+30) 266 111 8095
Address	New Port of Corfu, near Gouvia Marina 490 83 Corfu Greece	E-mail	corfu@devalk.nl

DISCLAIMER

These particulars are given in good faith as supplied but cannot be guaranteed.



GENERAL

Model	COMFORT 32
Type	sailing yacht
LOA (m)	9,50
LWL (m)	7,50
Beam (m)	3,25
Draft (m)	1,70
Year built	1981
Builder	Comfortbaetar AB, Sweeden
Country	Sweden
Designer	Kenneth Albinsson
Displacement (t)	4,8
Ballast (tonnes)	lead 1,8
Gross tonnage	11,41
Net tonnage	10,38
Hull material	GRP
Hull colour	white
Keel type	fin keel
Superstructure material	GRP
Deck material	GRP
Antifouling (year)	Coppercoat 2015
Window frame	aluminium
Window material	glass
Deckhatch	yes
Insulation	foam
Fuel tank (litre)	stainless steel 50
Level indicator (fuel tank)	yes
Freshwater tank (litre)	stainless steel 100
Blackwater tank (litre)	stainless steel 30
Blackwater tank extraction	pump PLUS MACERATOR ELECTRIC
Wheel steering	chain steering Chain/wire rope steering



Outside helm position	yes
Emergency tiller	yes

ACCOMMODATION

Cabins	2
Berths	6
Interior	Wood
Layout	yes
Floor	teak
Saloon	yes
Chart table	yes
Aft Cabin	X 2
Dinette	yes
Opening door to cockpit	yes
Galley	yes
Countertop	wood
Sink	stainless steel
Cooker	calor gas
Oven	yes
Fridge	yes
Water pressure system	electrical
Manual and/or foot pump	yes
Coffee maker	yes
Crockery	yes
Owners cabin	yes
Bathroom	separate
Toilet	separate
Toilet system	manual
Wash basin	in the bathroom
Guest cabin 1	single bed
Bathroom	separate



Toilet	separate
Wash basin	in the bathroom

MACHINERY

No of engines	1
Make	YANMAR
HP	29
kW	21.34
Fuel	diesel
Maximum speed (kn)	7
Cruising speed (kn)	6
Drive	sail-drive
Gearbox	Yanmar
Propeller type	folding Feathering Max Prop
Propeller blades	3
Electric bilge pump	yes
Electrical installation	yes
Batteries	X 3
Start battery	2019
Service battery	2022
Solar panel	yes
Shorepower	with cable

NAVIGATION

Compass	yes
Depth sounder	yes
Windset	yes
VHF	yes
VHF handheld	yes
Autopilot	yes
Plotter/GPS	GARMIN detachable



Navigation lights	yes
Searchlight	yes

EQUIPMENT

Sprayhood	Available but not installed
Sun awning	yes
Cockpit cushions	yes
Cockpit table	yes
Gangway	yes
Anchor	Rocna 14Kg
Anchor chain	50m 8mm stainless steel plus rope
Anchor 2	Delta Non fitted 12Kg
Anchor chain	10 chain plus 10 rope
Windlass	LOFRANCE
Dinghy	2020
Outboard	YAMAHA 2Hp
Sea railing	yes
Lifejackets	yes
Safety harness	yes
Binocular	yes
Fenders	yes
Mooring lines	yes
Spare parts	yes
Tools	yes
Clock - barometer	yes
Fire extinguisher	yes
Extra info	3rd Anchor spare on board

RIGGING

Rigging	sloop
Standing rigging	wire

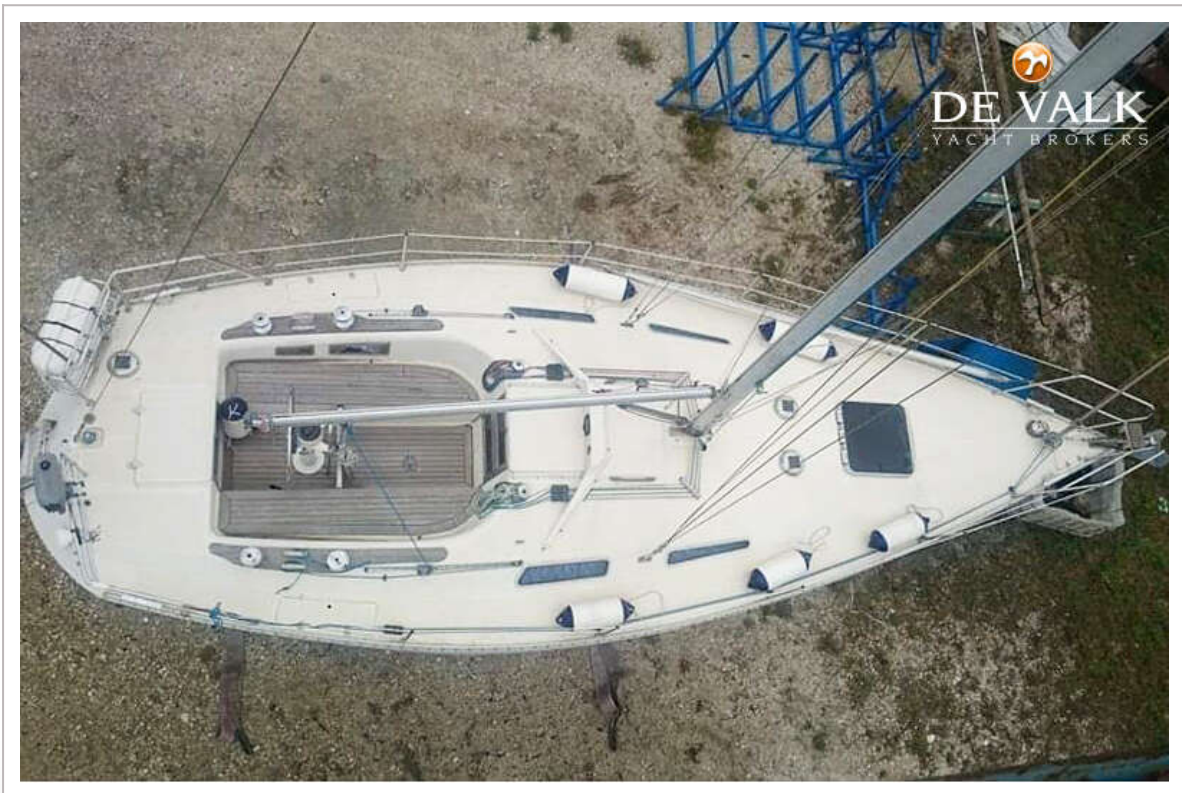


Material mast	aluminium
Spreaders	yes
Mainsail	2010
Mainsail cover	yes
Fully battened mainsail	yes
Genoa	2010
Spinnaker	yes
A-symmetric spi	Brand new
Stormjib	yes
Halyard winches	yes
Extra info	Facnor racing roller with gemini profile





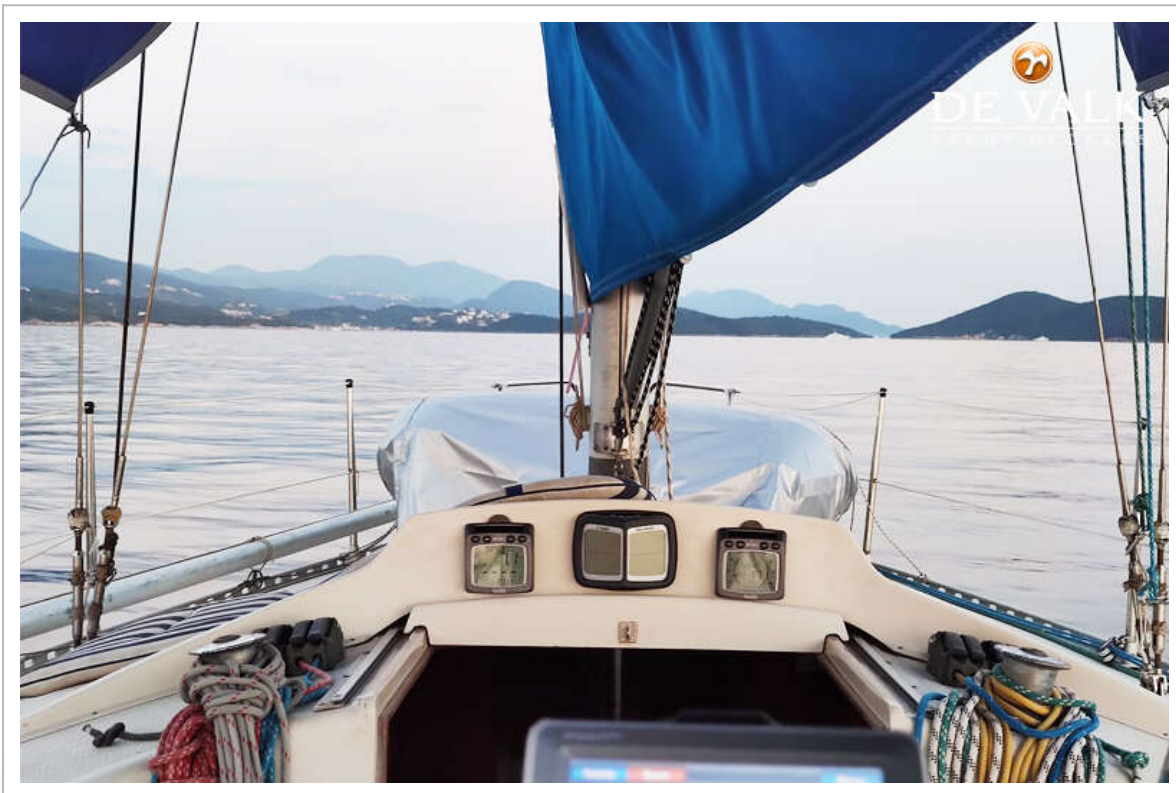
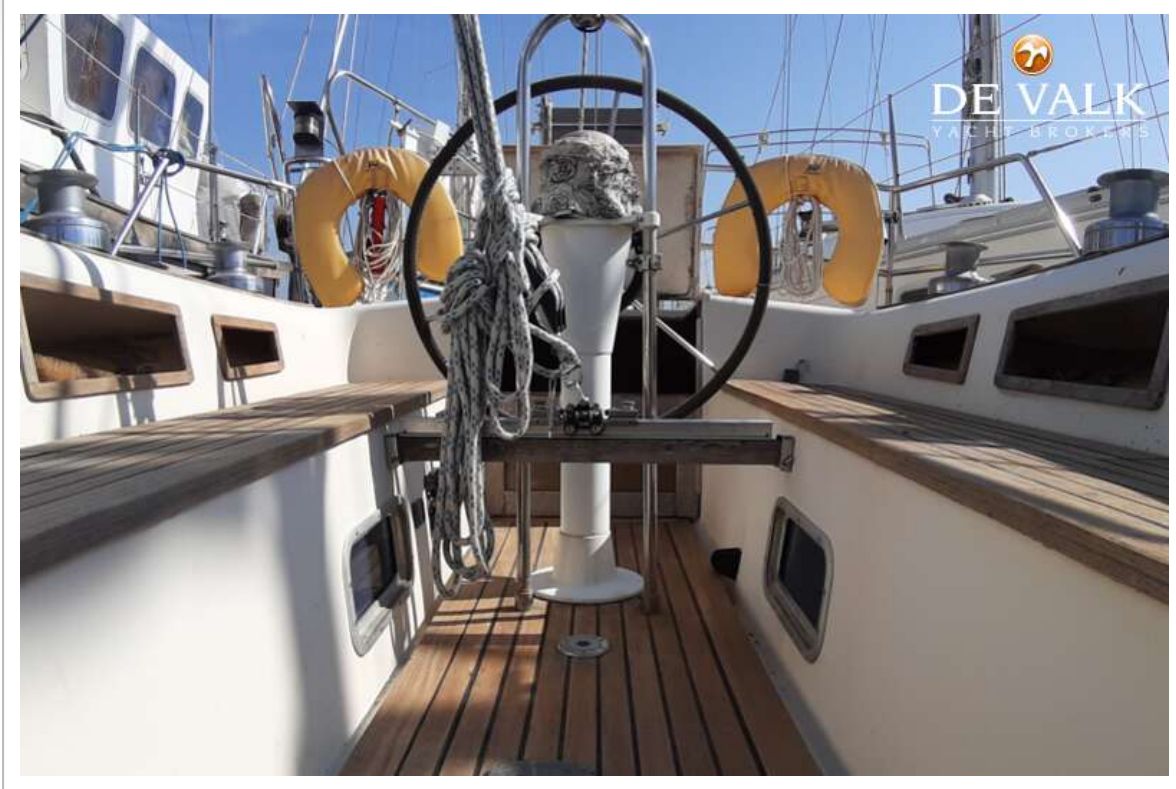
COMFORT 32



COMFORT 32



COMFORT 32



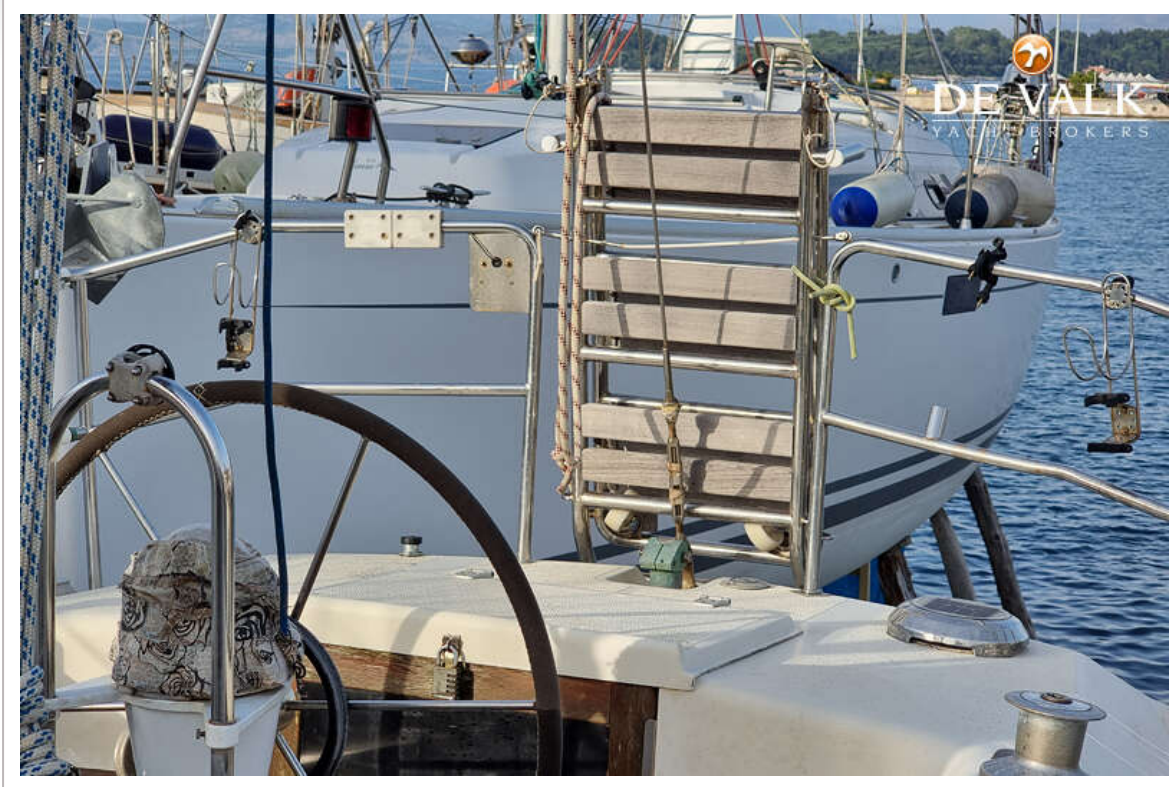
COMFORT 32



COMFORT 32



COMFORT 32



COMFORT 32





COMFORT 32



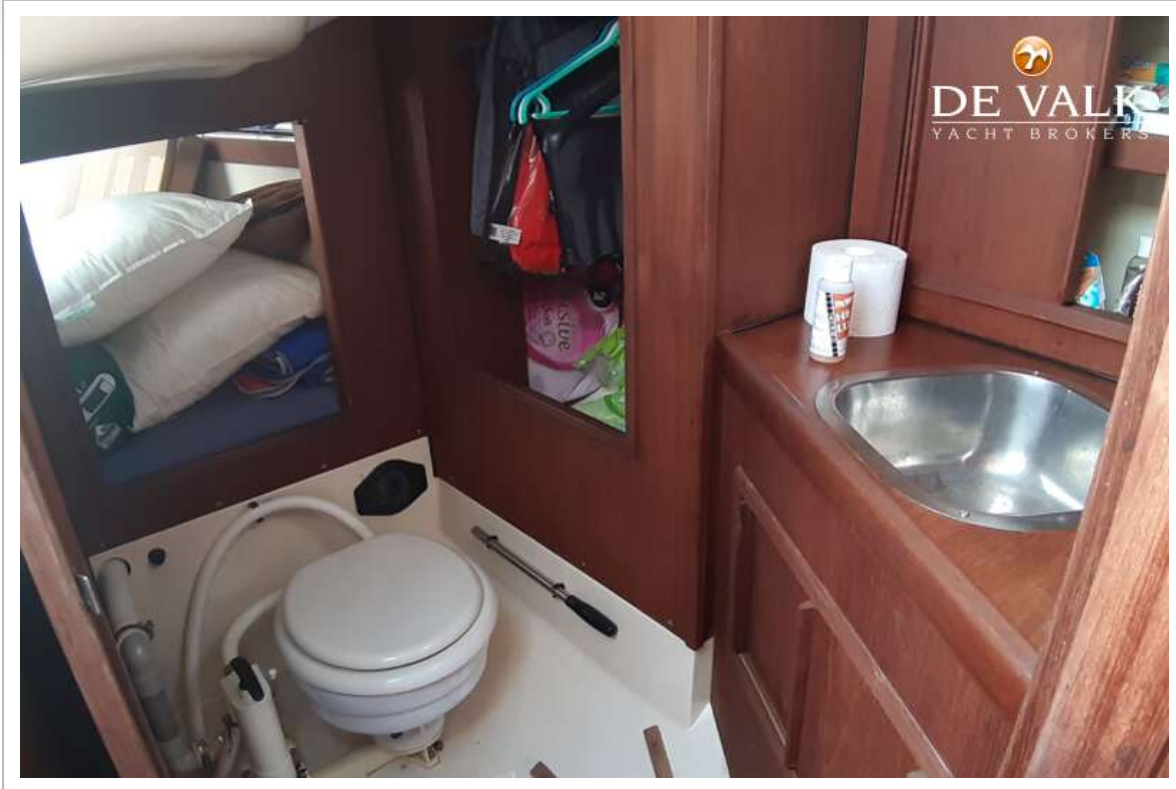
COMFORT 32



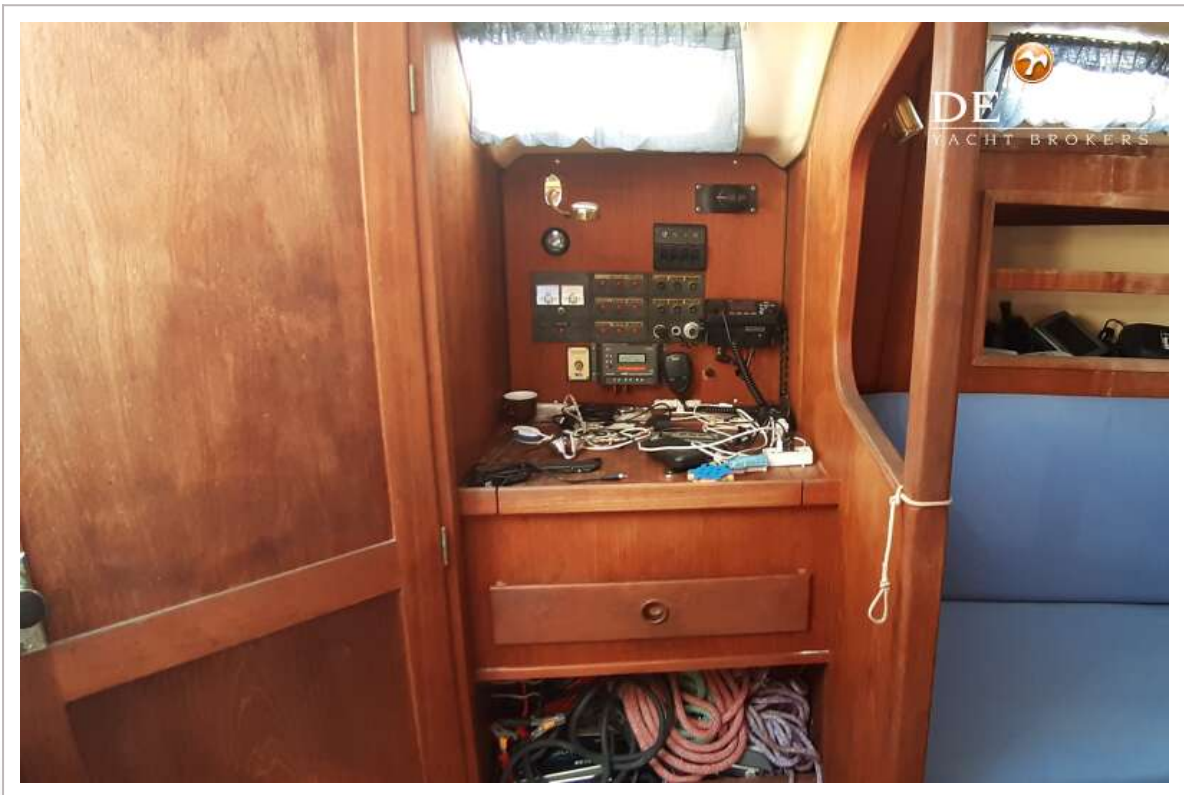
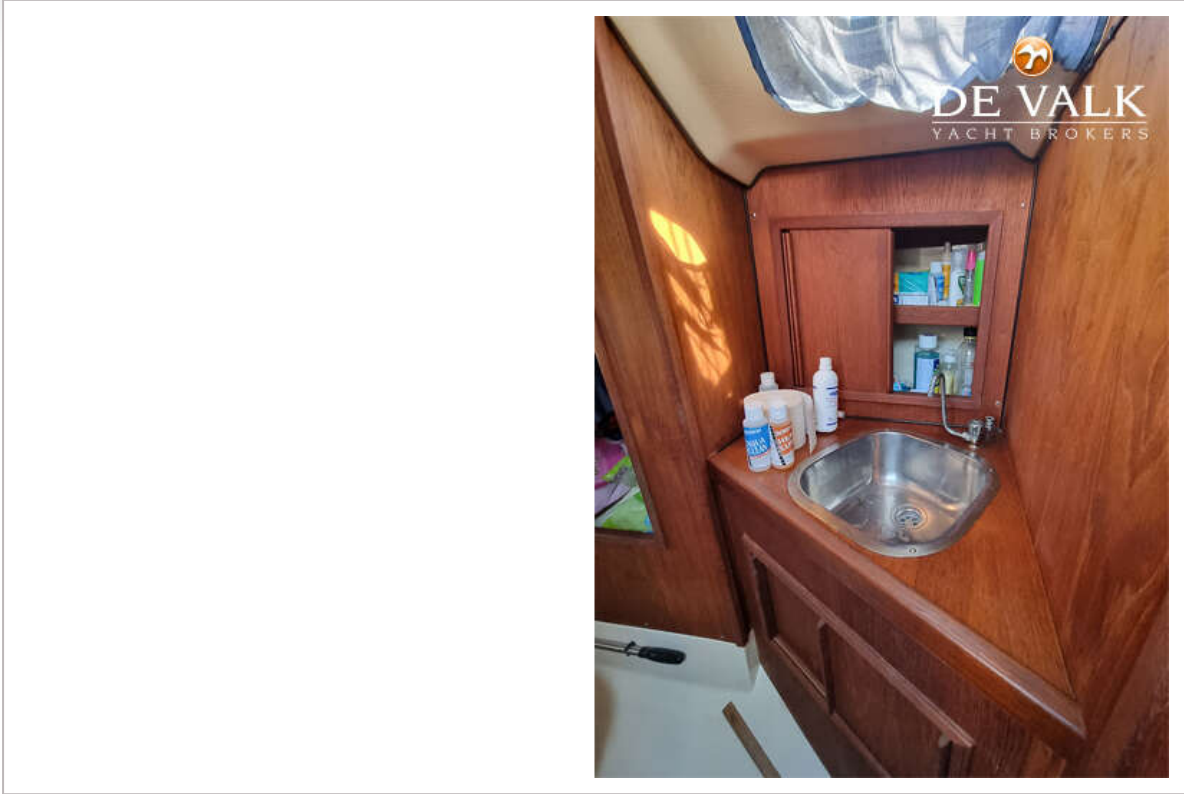
COMFORT 32



COMFORT 32



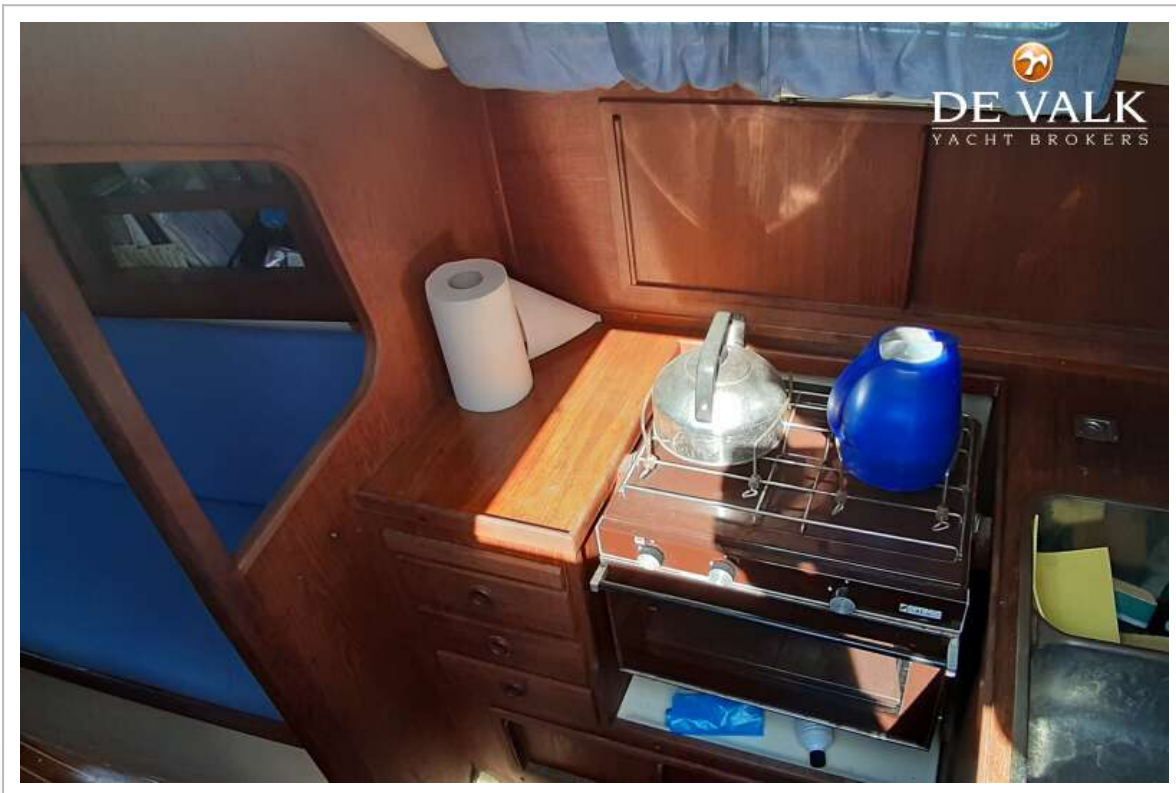
COMFORT 32



COMFORT 32



COMFORT 32



COMFORT 32

