



DE VALK
YACHT BROKERS



ETAP 30i



DE VALK
YACHT BROKERS

BROKER'S COMMENTS

The Etap 30 I is an excellent little "pocket-yacht" with very good accommodations below decks, ample stowage space and easy to handle in many circumstances. Deep and safe cockpit with ample sized lazarette. On deck she is fitted with a self tacking jib and one-line reef system. No need to go forward to the mast for reefing. The Etap 30I is unsinkable so suitable for all waters and areas. Stored inside a shed every winter by current owner.

Hans Visser

SPECIFICATIONS

Dimensions	9.35 x 3.16 x 1.42 (m)	Builder	Etap Yachting
Built	1996	Cabins	2
Material	GRP	Berths	6
Engine(s)	1 x Volvo Penta 2020 S diesel	Hp/Kw	20.00 (hp), 14.72 (kw)
Asking price	sold (VAT)	Lying	at sales office

CONTACT

Sales office	De Valk Hindeloopen B.V.	Telephone	+31 514 52 40 00
Address	Oosterstrand 1 8713 JS Hindeloopen NL	E-mail	hindeloopen@devalk.nl

DISCLAIMER

These particulars are given in good faith as supplied but cannot be guaranteed.



GENERAL

Model	ETAP 30I
Type	sailing yacht
LOA (m)	9,35
LWL (m)	8,00
Beam (m)	3,16
Draft (m)	1,42
Air draft (m)	13,80
Headroom (m)	1,90
Year built	1996
Launched	1996
Builder	Etap Yachting
Country	Belgium
Designer	Mortain & Mavrikios
Displacement (t)	4,8
Ballast (tonnes)	1,2
CE norm	NA
Hull material	GRP
Hull colour	white
Hull shape	full bilged
Keel type	fin keel
Superstructure material	GRP
Rubbing strake	rubber
Deck material	GRP
Deck finish	Treadmaster
Superstructure deck finish	non-skid moulded in
Cockpit deck finish	teak On seats
Antifouling (year)	2022
Window frame	aluminium
Window material	perspex
Deckhatch	1



Portholes	4 x opening 2 x closed
Fuel tank (litre)	stainless steel 50
Level indicator (fuel tank)	yes
Freshwater tank (litre)	polyethylene 130
Tiller	yes

ACCOMMODATION

Cabins	2
Berths	6
Interior	ash Light
Layout	Private use
Floor	teak and holly
Saloon	yes
Headroom saloon (m)	1,95
Chart table	yes
Aft Cabin	yes
Opening door to cockpit	yes
Galley	L shaped
Countertop	wood
Sink	stainless steel
Cooker	calor gas 2 burner
Fridge	yes
Water pressure system	yes
Crockery	Various
Owners cabin	double bed
Bed length (m)	2,00 x 1,40
Wardrobe	shelves
Bathroom	shared
Toilet	shared
Toilet system	manual New 2020
Wash basin	in the bathroom



Guest cabin 1	double bed Aft
Bed length (m)	1,20 x 200
Wardrobe	shelves

MACHINERY

No of engines	1
Make	Volvo Penta
Type	2020 S
HP	20
kW	14.72
Fuel	diesel
Maximum speed (kn)	5
Cruising speed (kn)	4
Consumption (l/hr)	2
Engine cooling system	freshwater heat exchanger
Drive	sail-drive
Saildrive seal	Needs replacing
Engine controls	mechanical
Propeller type	fixed
Propeller blades	2
Manual bilge pump	yes
Electrical installation	12 V
Batteries	yes
Start battery	12 V 70 Ah
Service battery	12 V 90 Ah
Battery charger	Victron blue energy 12 V10 Amp
Shorepower	with cable

NAVIGATION

Compass	Suunto
Electric compass	Fluxgate for autopilot



Depth sounder/log	Autohelm M ulti
Autopilot	Autohelm 4000
GPS	Garmin 120
Navigation lights	yes
Extra info	Navigation equipment has never been used by owner is sold defect

EQUIPMENT

Sprayhood with grab rail	yes
Bimini	yes
Anchor	Danforth Aluminium with line
Sea railing	yes
Pushpit	yes
Pulpit	yes
Fenders	6 x
Mooring lines	4 x
Radio-cd player	yes
Speakers in salon	yes
Clock - barometer	Including clock and hygrometer
Fire extinguisher	yes
Extra info	Radio Is sold as being defect

RIGGING

Rigging	sloop
Standing rigging	wire
Brand mast	Seldén
Material mast	aluminium
Spreaders	Single set
Mainsail	yes
Mainsail cover	yes
Jib	Selftacking



Genoa furler	yes
Reefing System	slabreefing
Backstay adjuster	tackle
Boomvang	mechanical Rodkicker
Primary sheet winch	2 x Lewmar 30 2 speed ST
Halyard winches	2 x lewmar 16



ETAP 301



ETAP 30i



ETAP 30I



ETAP 30i



ETAP 301



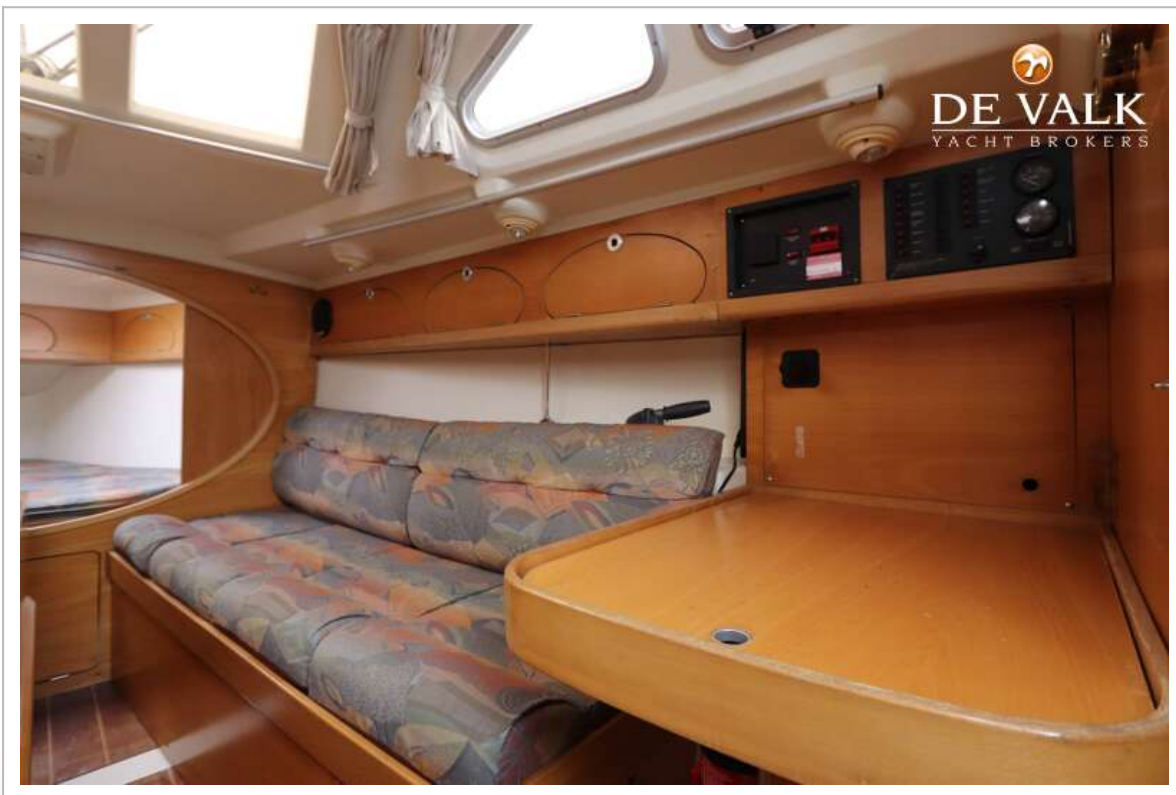
ETAP 301





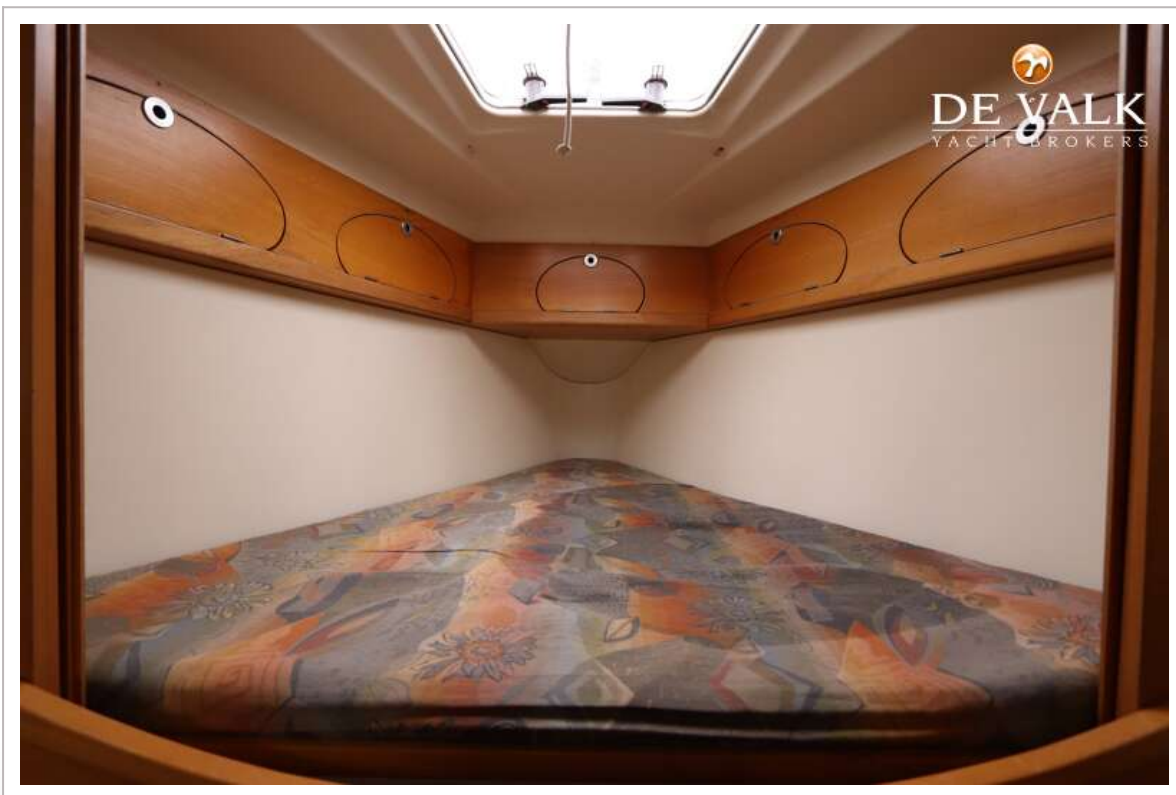
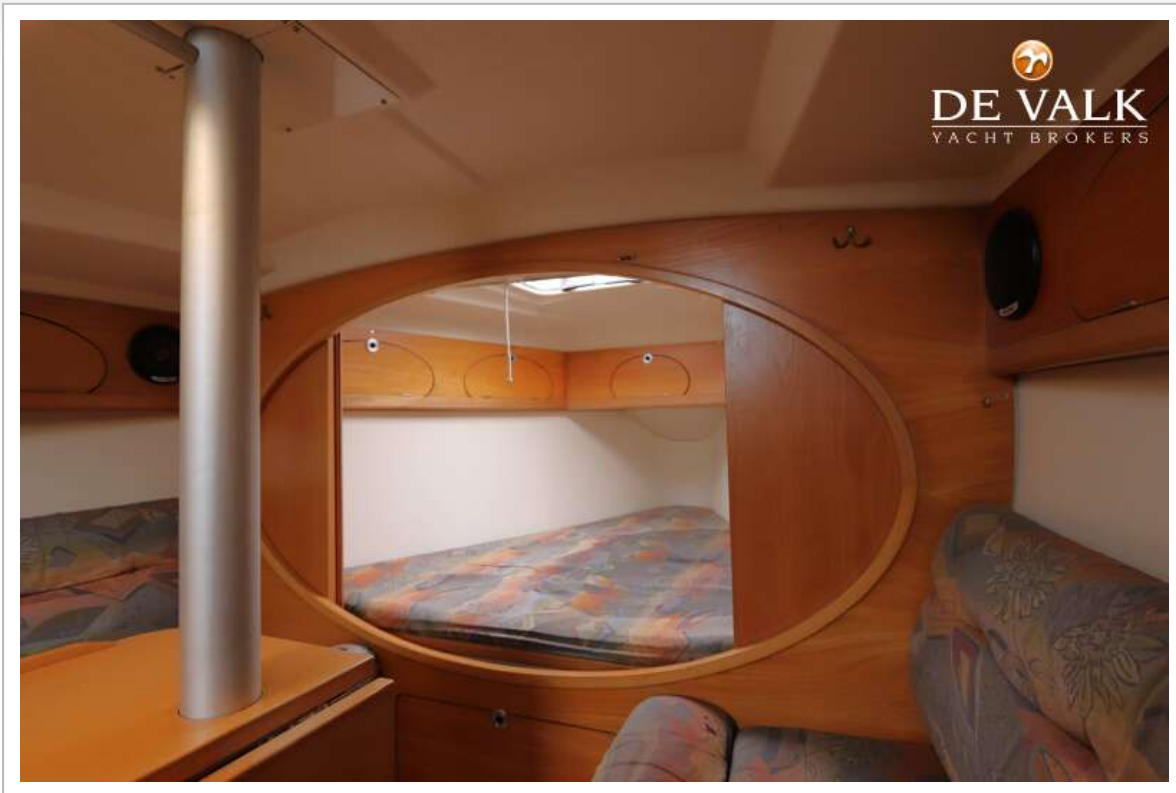
ETAP 30i











ETAP 30I







