



DE VALK  
YACHT BROKERS



## APOLLO DE LUXE 66 FLYBRIDGE-STABILIZERS



DE VALK  
YACHT BROKERS

# APOLLO DE LUXE 66 FLYBRIDGE-STABILIZERS

## BROKER'S COMMENTS

There's absolutely no doubt that the "Enjoy Life" will amaze you if you're looking for an all including comfortable and economical liveaboard flybridge yacht! This well maintained and self-sufficient Apollo de Luxe 66 Flybridge has been built as a One Off in 2005, and the current owner carried out a full refit from 2018 to 2023 with lots of new equipment and upgrades, like new DMS stabilizers. Only the best of the best is good enough for this magnificent motor yacht, also known from the YouTube channel "ENJOY LIFE" ERIK & DIANA. Contact De Valk Zeeland for more info.

*Joris van de Rijt*

## SPECIFICATIONS

<b>Dimensions</b>	19.98 x 4.93 x 1.20 (m)	<b>Builder</b>	J.Boel & Zonen
<b>Built</b>	2005	<b>Cabins</b>	3
<b>Material</b>	Steel	<b>Berths</b>	8
<b>Engine(s)</b>	2 x Mitsubishi 6D16-TE1 diesel	<b>Hp/Kw</b>	2 x 193.00 (hp), 142.05 (kw)
<b>Asking price</b>	sold (VAT )	<b>Lying</b>	elsewhere / Not at sales office

## CONTACT

<b>Sales office</b>	De Valk Sint Annaland B.V.	<b>Telephone</b>	+31 (0)166 601 000
<b>Address</b>	Koelhuisweg 4 4697 RM Sint Annaland NL	<b>E-mail</b>	sintannaland@devalk.nl

## DISCLAIMER

These particulars are given in good faith as supplied but cannot be guaranteed.



# APOLLO DE LUXE 66 FLYBRIDGE-STABILIZERS

## GENERAL

Model	APOLLO DE LUXE 66 FLYBRIDGE-STABILIZERS
Type	motor yacht
LOA (m)	19,98
LWL (m)	18,08
Beam (m)	4,93
Draft (m)	1,20
Air draft (m)	6,85
Air draft min (m)	4,85
Headroom (m)	2,15
Year built	2005
Launched	2006
Builder	J.Boel & Zonen
Country	Belgium
Displacement (t)	65
Ballast (tonnes)	lead 1,2
CE norm	B
Hull material	steel
Hull colour	white (sandblasted and painted 11-2018)
Hull shape	hard chine
Superstructure material	steel (sandblasted and painted 11-2018)
Rubbing strake	stainless steel
Deck material	steel (sandblasted and prepared for Flexiteek 11-2018)
Deck finish	Flexiteek (new 2018)
Superstructure deck finish	Flexiteek (new 2018)
Antifouling (year)	2023
Window material	Gebo custom made tripple glazing (new 2021)
Deckhatch	3x (new 2018) + big hatch on swimming platform (new 2018)
Portholes	Gebo (2x new 2018)
Insulation	Foam / rockwool above waterline
Flybridge	yes



# APOLLO DE LUXE 66 FLYBRIDGE-STABILIZERS

<b>Flybridge cover</b>	For furniture and helm position (new 2022)
<b>Radar arch</b>	collapsible
<b>Mast can be lowered</b>	hydraulic
<b>Fuel tank (litre)</b>	stainless steel 1200
<b>Level indicator (fuel tank)</b>	Via Raymarine plotter
<b>Freshwater tank (litre)</b>	stainless steel 2000
<b>Level indicator (freshwater)</b>	Via Raymarine plotter
<b>Blackwater tank (litre)</b>	stainless steel 500 (not connected)
<b>Wheel steering</b>	hydraulic And electric
<b>Inside helm position</b>	yes
<b>Flybridge helm position</b>	hydraulic And electric with foldable helm seat
<b>More info on hull</b>	Frontside keel replaced 2018
<b>More info on paintwork</b>	Hull/superstructure/flybridge painted with high quality Awlgrip
<b>Extra info</b>	All cleats new 2018
<b>Extra info</b>	CVO certificate including Rijn / Bazel

## ACCOMMODATION

<b>Cabins</b>	3
<b>Berths</b>	8
<b>Interior</b>	cherry (upholstry bench new 2018)
<b>Floor</b>	carpet And Flexiteek woodprint in salon (all new 2018)
<b>Aft deck</b>	(new ceiling in 2018)
<b>Pilot house/deck saloon</b>	yes
<b>Saloon</b>	All inside window coverings new 2022
<b>Headroom saloon (m)</b>	2,15
<b>Heating</b>	floor heating Kabola ecoline KB 45 (new 2020) for floor heating
<b>Air-conditioning</b>	Dometic (new 2020) for all areas with heatexchanger for heating
<b>Dinette</b>	On afterdeck (new 2018)
<b>Sliding door to aft deck</b>	Yes,+ 2x opening doors to side deck near helm
<b>Galley</b>	Refit in 2018
<b>Countertop</b>	corian (new 2018)



# APOLLO DE LUXE 66 FLYBRIDGE-STABILIZERS

Sink	stainless steel (new 2022, water tap also new 2022)
Cooker	induction Siemens (new 2022)
Extractor	Siemens
Microwave/oven combi	Siemens
Fridge	Siemens
Freezer	Siemens
Hot water system	on central heating + boiler (boiler new 2023)
Water pressure system	electrical Dab whisper quiet (new 2018)
Dishwasher	Siemens
Owners cabin	French bed
Bed length (m)	2,00
Wardrobe	hanging/drawers/shelves
Bathroom	en suite Refit in 2018
Toilet	en suite
Toilet system	electric (new 2021)
Wash basin	in the bathroom (new 2018)
Shower	en suite (new 2018)
Guest cabin 1	double bed + single bed
Bed length (m)	2,00
Wardrobe	hanging/drawers/shelves
Guest cabin 2	double bed + single bed
Bed length (m)	2,00
Wardrobe	hanging/drawers/shelves
Washing machine/dryer combi	Bosch (new 2020) in separate laundry room
Extra info	Airconditioning can run on 16 Amp shorepower
Extra info	All interior light LED and dimable

## MACHINERY

No of engines	2
Make	Mitsubishi
Type	6D16-TE1



# APOLLO DE LUXE 66 FLYBRIDGE-STABILIZERS

HP	193
kW	142.05
Fuel	diesel
Year installed	2009
Maximum speed (kn)	9
Cruising speed (kn)	7
Consumption (l/hr)	7
Engine hours	1554
Engine cooling system	hopper cooling (new coolers installed 06-2023)
Drive	shaft
Engine controls	electrical With hydronautica remote (new 2021)
Gearbox	hydraulic On port engine replaced 2021
Bowthruster	electric Vetus (new 2022)
Sternthruster	electric Vetus (new 2010)
Exhaust	dry
Thrust bearing	(portside replaced 2022)
Propeller type	fixed
Propeller blades	4
Propeller shaft material	stainless steel (portside replaced 2022)
Shaft lubrication	water
Electric bilge pump	3x
Bilge alarm	yes
Electrical installation	All equipment switches via digital control display
Generator	silent separator Mitsubishi 15 kW (2006)
Running hours generator	Circa 1811
Generator 2	silent separator Mitsubishi 5 kW (new 2018)
Running hours generator 2	Circa 100
Start battery	4x Optima red top (new 2021)
Service battery	8x 230Ah agm (new 08-2022)
Generator battery	2x 60Ah (new 2019)
Bowthruster battery	4x 240Ah agm (new 2021)
Sternthruster battery	4x 240Ah agm (new 2021)



# APOLLO DE LUXE 66 FLYBRIDGE-STABILIZERS

Windlass battery	Via bowthruster batteries
Battery monitor	Victron (new 2020)
Battery charger	Victron (for Sternthruster batteries)
Battery charger/inverter	2x victron multiplus 24/3000W 70 amp (new 2020)
Diode battery combiners	With high power alternators (new 2021)
Shorepower	with cable
Insulation transformer	Victron (new 2020)
Stabilizers	DMS MagnusMaster (installed 06-2023)
Extra info	Tyco fire safety system (new 2016)

## NAVIGATION

Electric compass	Simrad
Depth sounder	Simrad (new 06-2023) and Raymarine
Log	Simrad (new 06-2023)
VHF	2x Sailor 6210 (new 2021)
Autopilot	Simrad AP25 with FU25 electric steering
Rudder angle indicator	Simrad (new 06-2023)
Radar	Raymarine 4K digital (new 2022)
Radar/GPS/plotter	2x Raymarine Axion 12 inch (new 2021)
Wifi antenna	With wifi signal in all areas (new 2020)
Electronic chart(s)	yes
AIS transponder	EM-Track (new 2022)
Camera	8x with security app control and movement sensors (new 2020)
Navigation lights	LED high quality (new 2018)
Searchlight	Stainless steel (new 2020)

## EQUIPMENT

Fixed windscreen	On flybridge
Cockpit cover	With good insulation properties and sun blinds (new 2018)
Bimini	In two parts to put together (new 2019)
Cockpit cushions	On after deck and flybridge (new 2018)



# APOLLO DE LUXE 66 FLYBRIDGE-STABILIZERS

Cockpit table	On flybride (new 2022)
Bathing platform	Raised 10 cm in 2018
Boarding ladder	stainless steel
Transom door	2x
Deck shower	Hot / cold on bathing platform
Anchor	Pool
Anchor chain	Stainless steel 45 meter (new 2021)
Windlass	electrical Vetus FK001114 (remote via hydronautica)
Capstan	Via windlass
Deck wash	230V and 24V with long hose
Dinghy	Not included with the sale
Deck crane	hydraulic Opacmare for max 500 Kg (new 2018)
Sea railing	stainless steel
Railing side opening gates	2x
Lifejackets	8x
Lifebuoy	3x
Wiper	3x with flush system (new 2021)
Horn	air pressure
Fenders	Dan fenders (2022)
Mooring lines	yes
Alarm system	Via cameras and app
TV	1x extendable in salon (new 2022) 1x in owners cabin
Clock - barometer	yes
Fire extinguisher	Normal and extra 2x stainless steel in salon and owners cabin
Latest extinguisher survey	02-18-2021
Auto extinguisher system	Firepro fire extinguishers in electrical room and engineroom





# APOLLO DE LUXE 66 FLYBRIDGE-STABILIZERS

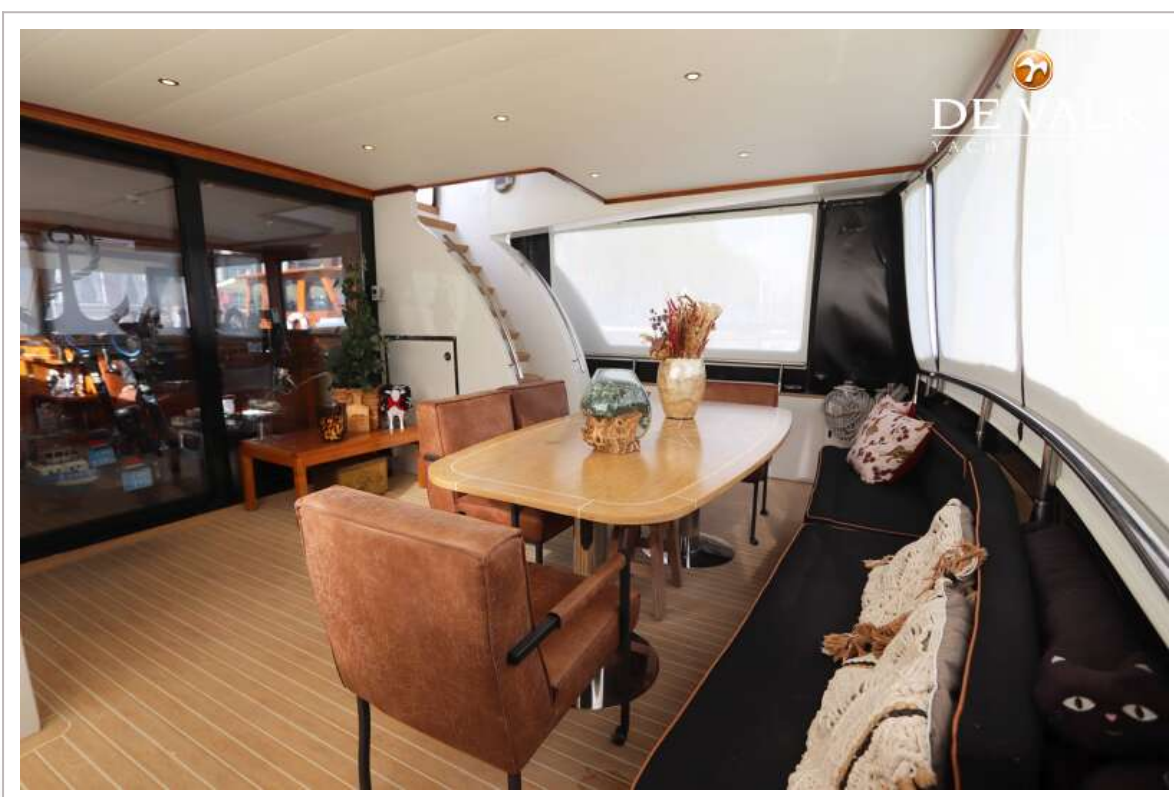


# APOLLO DE LUXE 66 FLYBRIDGE-STABILIZERS





# APOLLO DE LUXE 66 FLYBRIDGE-STABILIZERS



## APOLLO DE LUXE 66 FLYBRIDGE-STABILIZERS





## APOLLO DE LUXE 66 FLYBRIDGE-STABILIZERS



# APOLLO DE LUXE 66 FLYBRIDGE-STABILIZERS

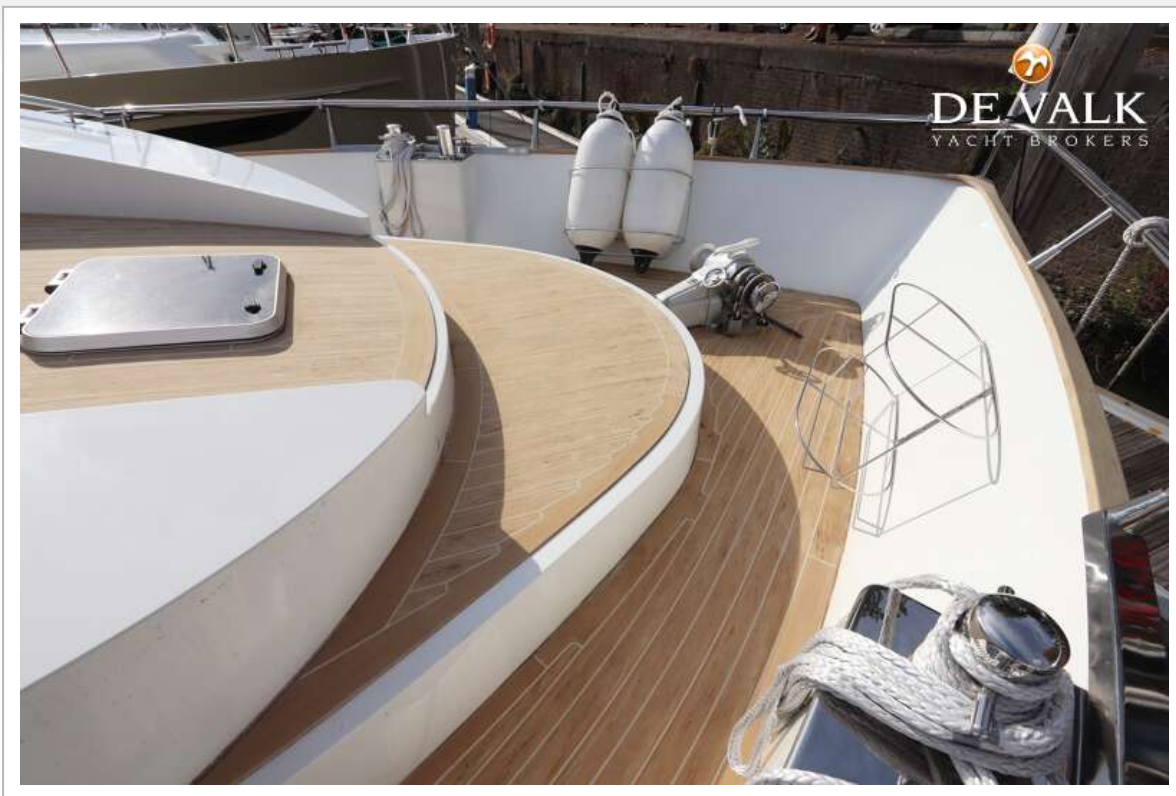




# APOLLO DE LUXE 66 FLYBRIDGE-STABILIZERS



# APOLLO DE LUXE 66 FLYBRIDGE-STABILIZERS

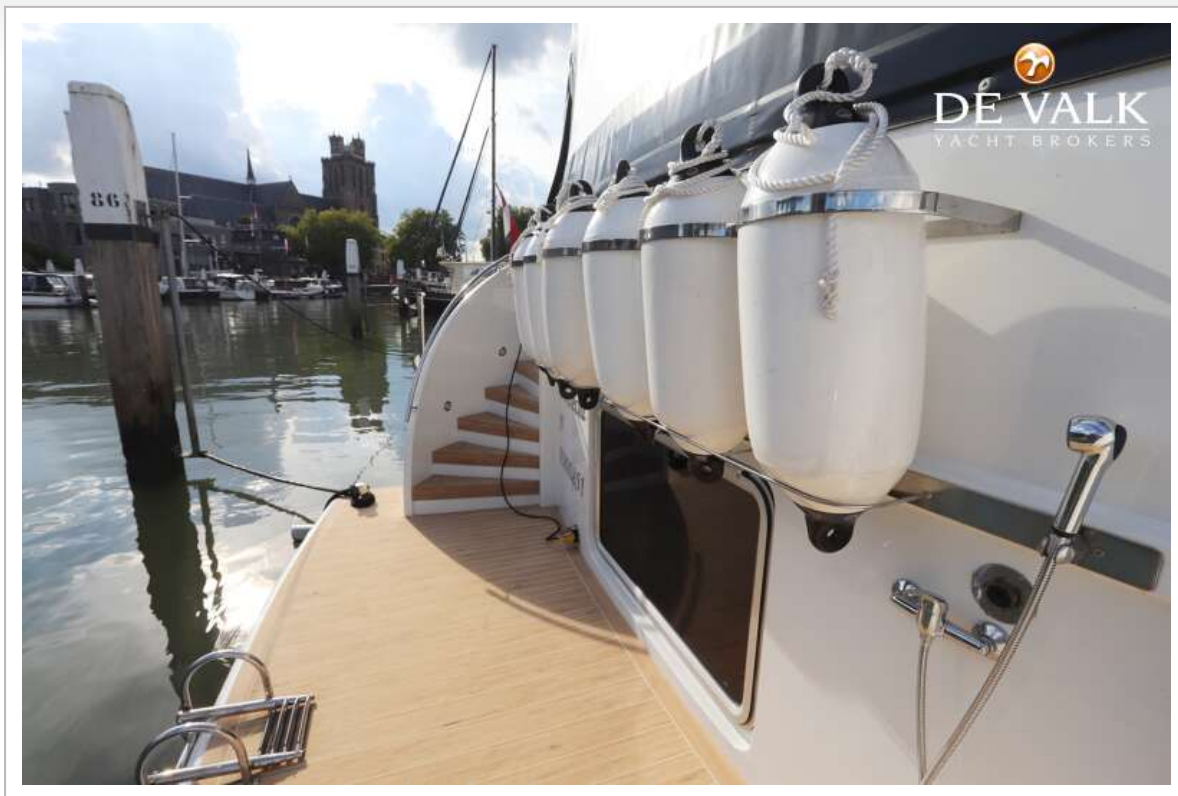




# APOLLO DE LUXE 66 FLYBRIDGE-STABILIZERS



## APOLLO DE LUXE 66 FLYBRIDGE-STABILIZERS

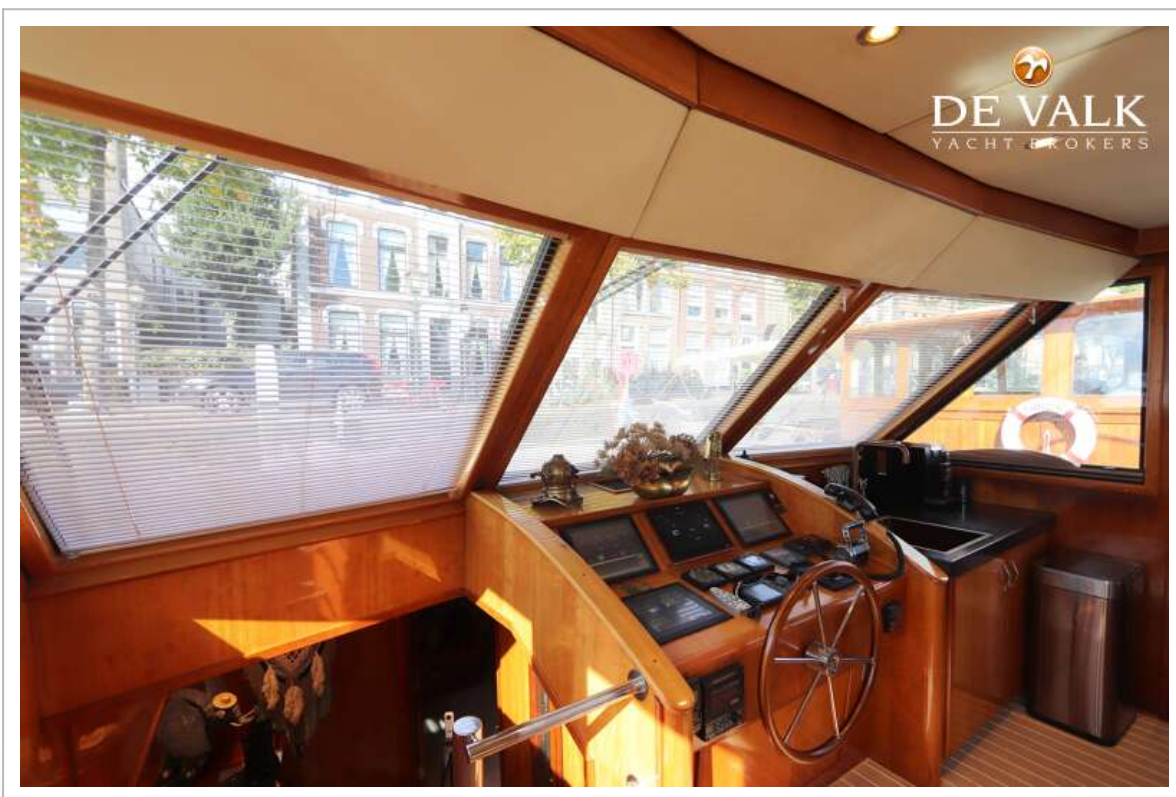




# APOLLO DE LUXE 66 FLYBRIDGE-STABILIZERS

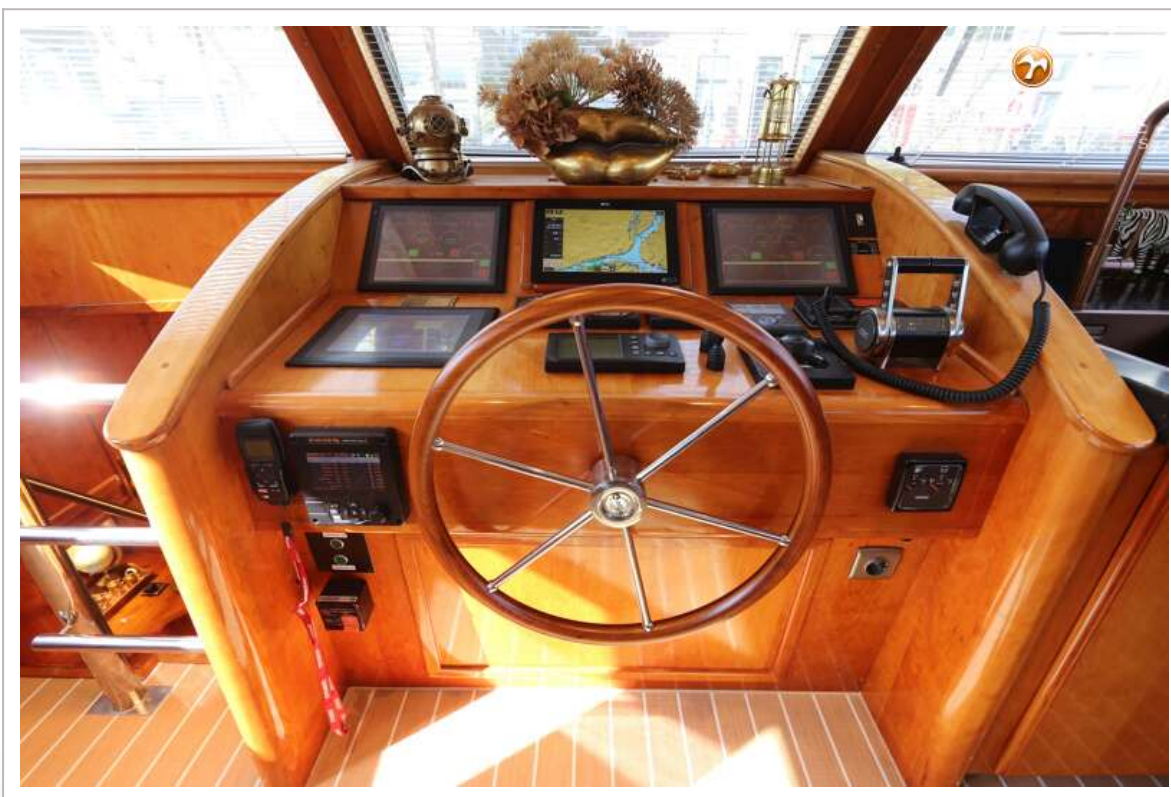
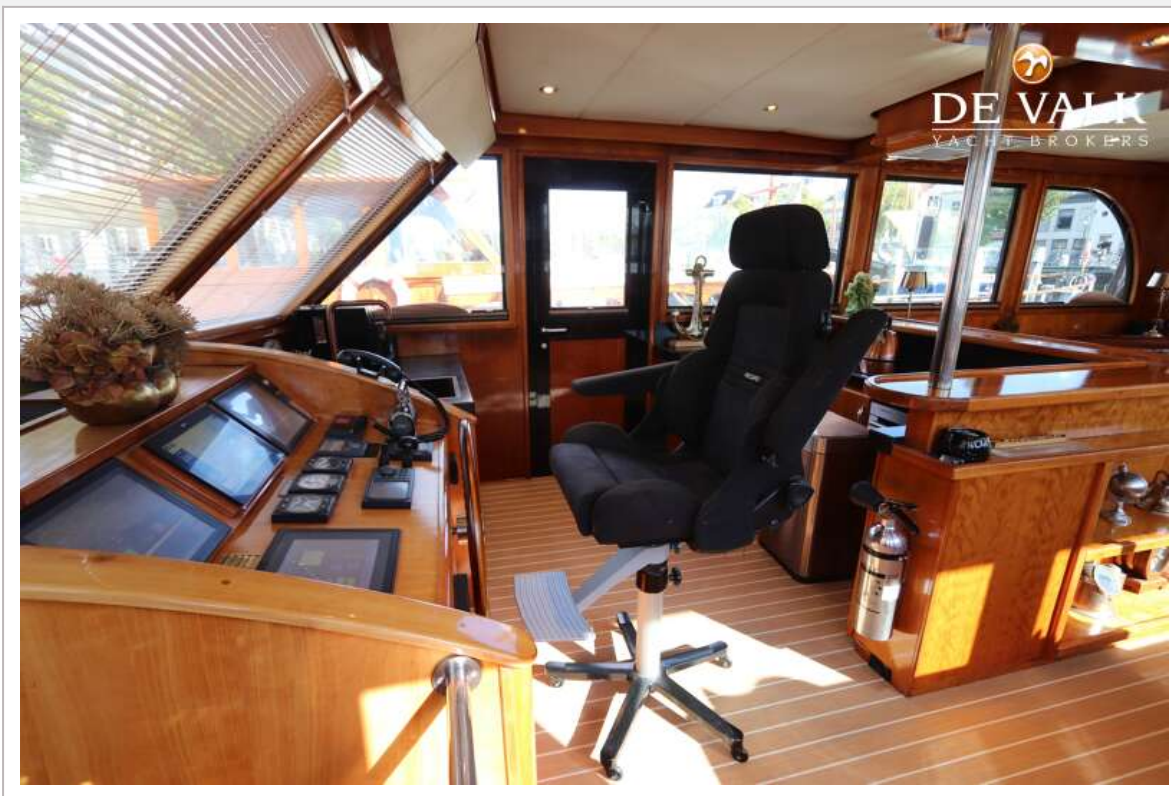


## APOLLO DE LUXE 66 FLYBRIDGE-STABILIZERS



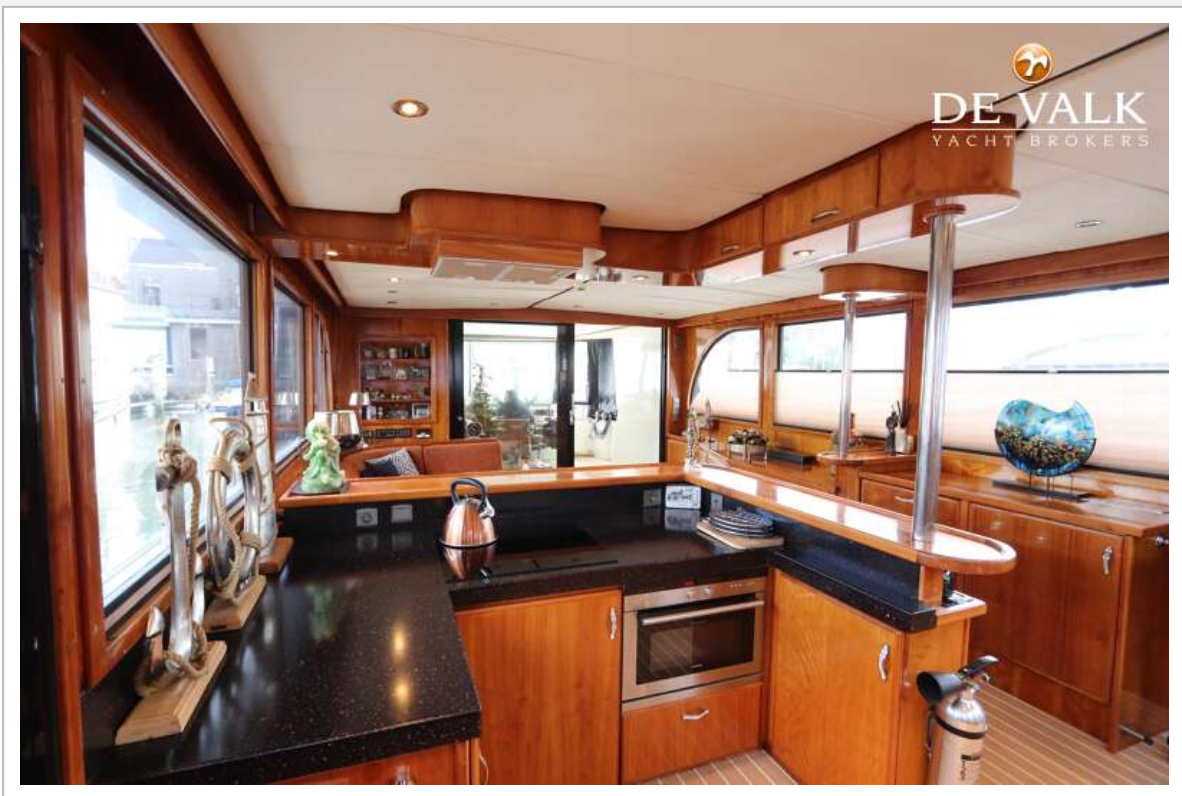


## APOLLO DE LUXE 66 FLYBRIDGE-STABILIZERS

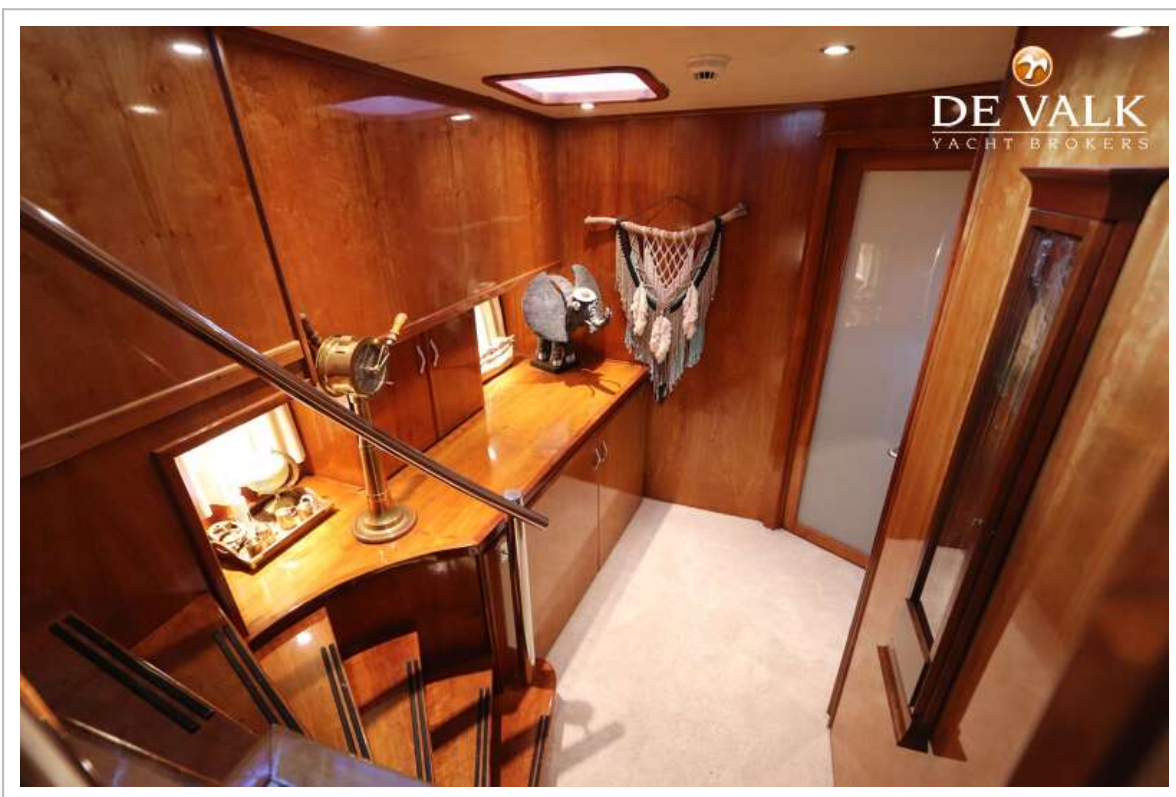
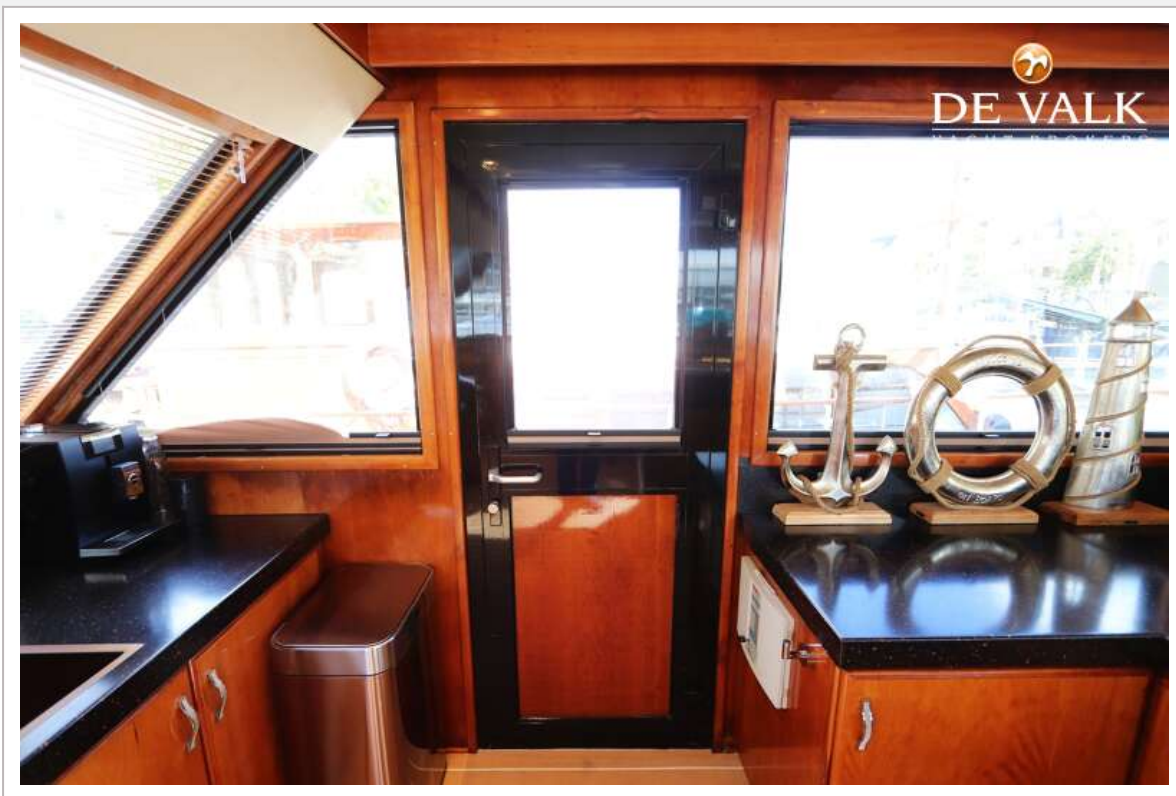




# APOLLO DE LUXE 66 FLYBRIDGE-STABILIZERS

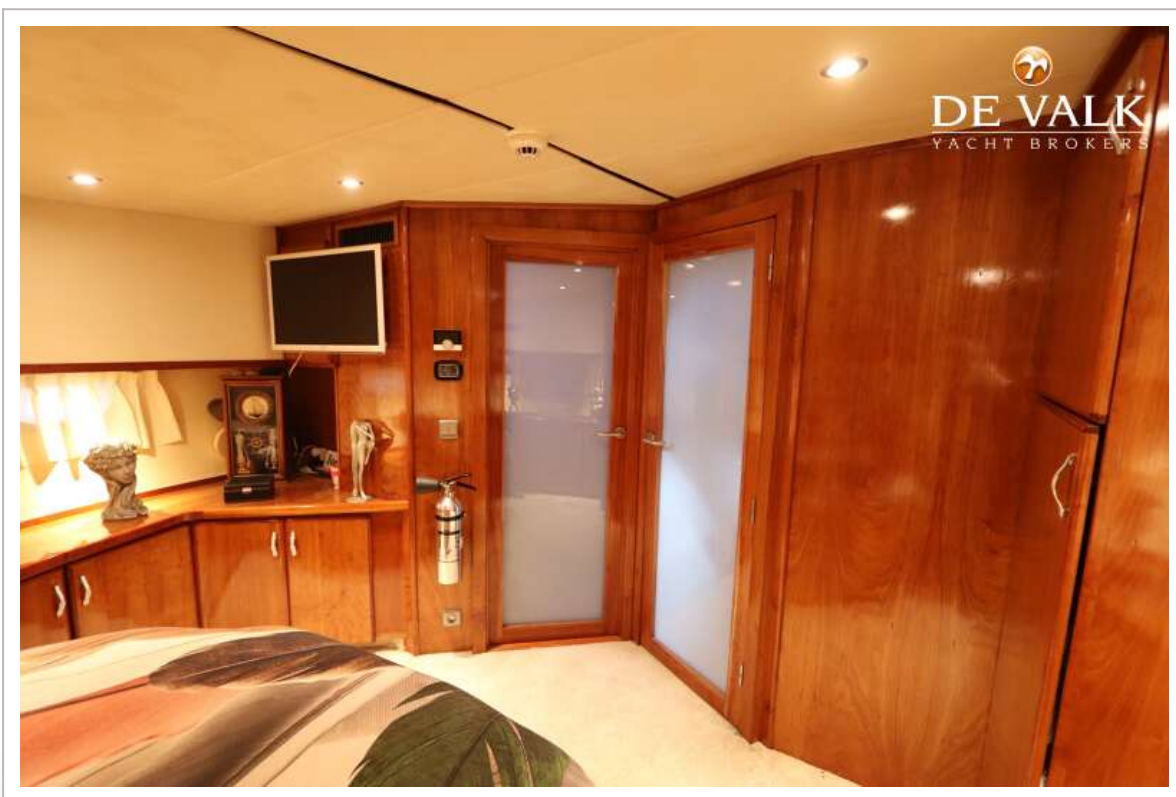


## APOLLO DE LUXE 66 FLYBRIDGE-STABILIZERS



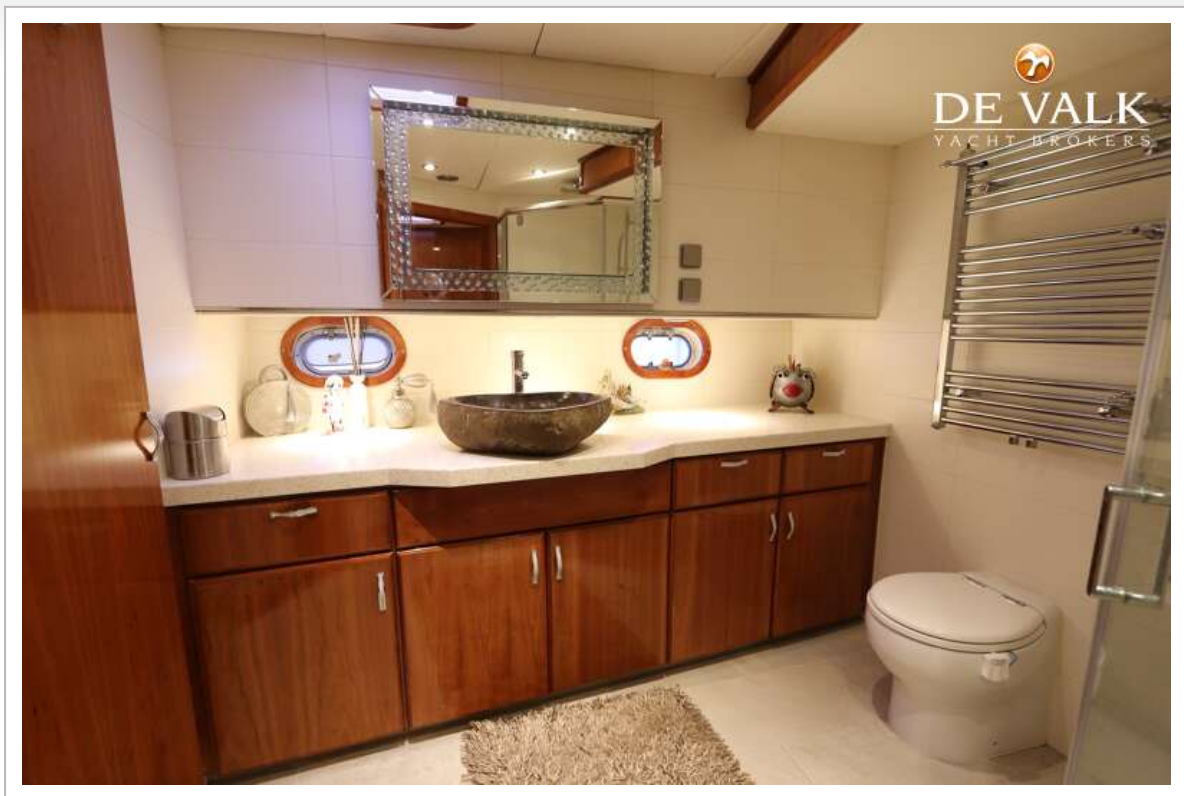


## APOLLO DE LUXE 66 FLYBRIDGE-STABILIZERS

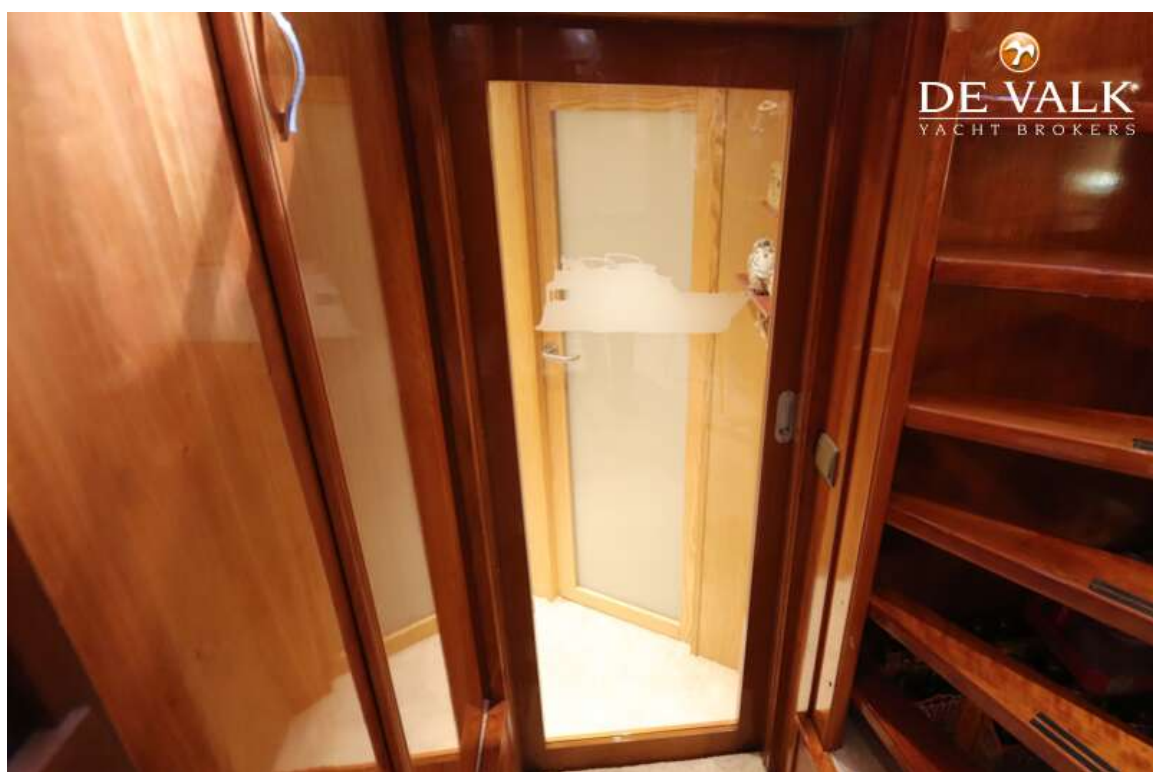




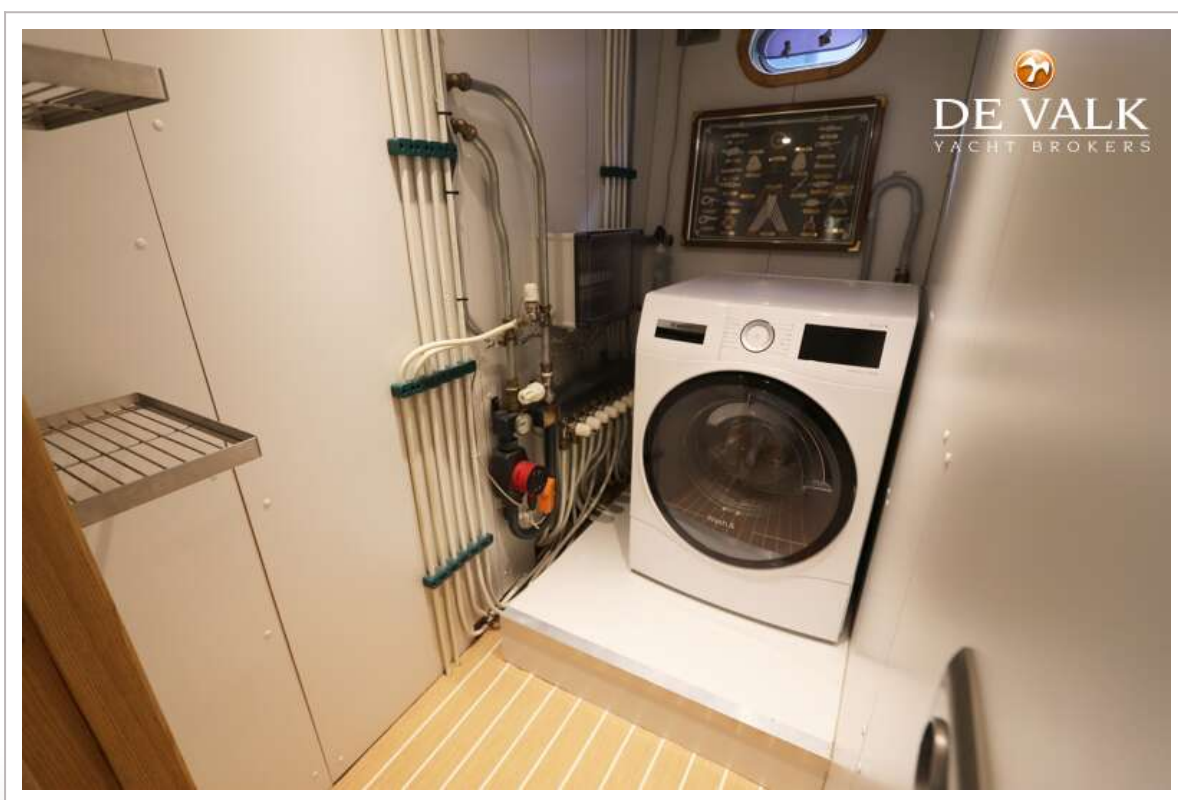
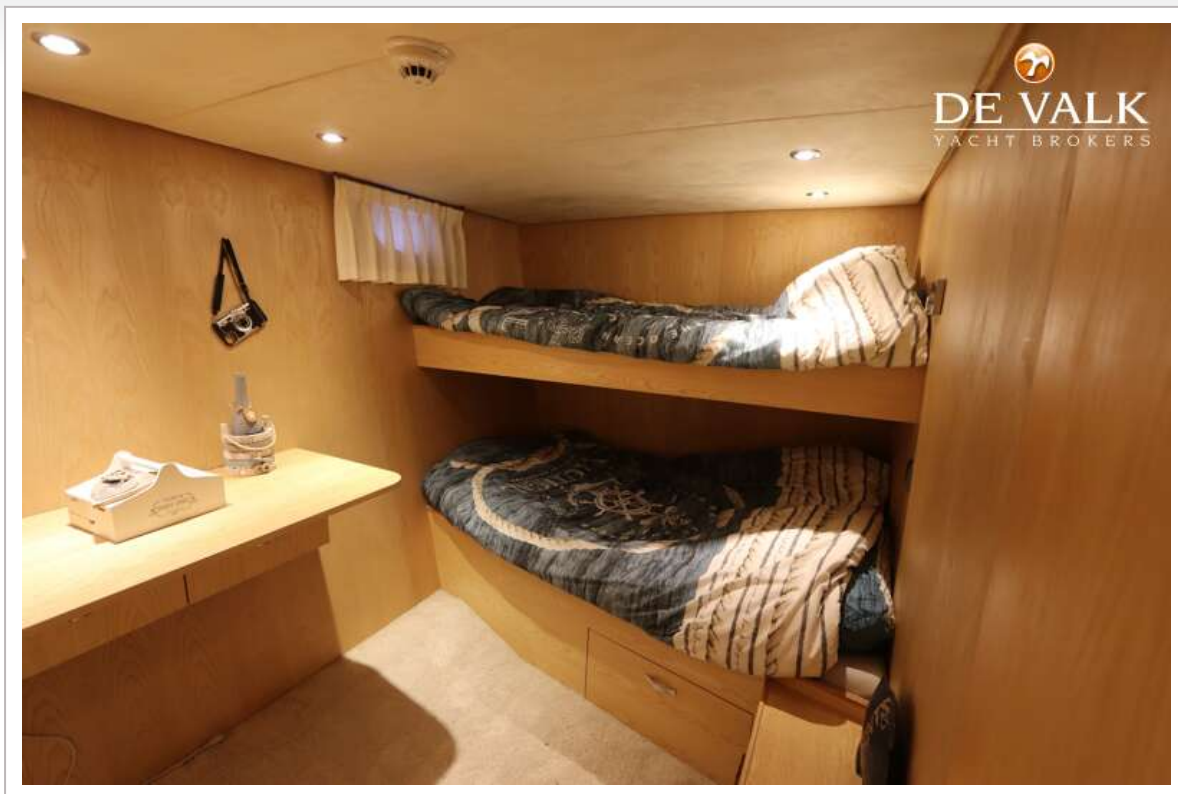
## APOLLO DE LUXE 66 FLYBRIDGE-STABILIZERS



## APOLLO DE LUXE 66 FLYBRIDGE-STABILIZERS



## APOLLO DE LUXE 66 FLYBRIDGE-STABILIZERS





# APOLLO DE LUXE 66 FLYBRIDGE-STABILIZERS





## APOLLO DE LUXE 66 FLYBRIDGE-STABILIZERS

