



DE VALK  
YACHT BROKERS



## BENETEAU OCEANIS 40 CC



DE VALK  
YACHT BROKERS

## BROKER'S COMMENTS

This owner's version Beneteau Oceanis 40 CC is truly in mint condition. She has been constantly taken care of, upgraded and customised, in the experienced hands of her current owner.

*Sofia Iliia-Salvanou*

## SPECIFICATIONS

<b>Dimensions</b>	12.50 x 3.95 x 1.70 (m)	<b>Builder</b>	BENETEAU
<b>Built</b>	2000	<b>Cabins</b>	2
<b>Material</b>	GRP	<b>Berths</b>	6
<b>Engine(s)</b>	1 x VOLVO PENTA MD22 diesel	<b>Hp/Kw</b>	59.00 (hp), 43.42 (kw)
<b>Asking price</b>	sold (VAT )	<b>Lying</b>	at sales office

## CONTACT

<b>Sales office</b>	De Valk Corfu	<b>Telephone</b>	(+30) 6948681503
<b>Address</b>	New Port of Corfu, near Gouvia Marina 490 83 Corfu GR	<b>E-mail</b>	corfu@devalk.nl

## DISCLAIMER

These particulars are given in good faith as supplied but cannot be guaranteed.



# BENETEAU OCEANIS 40 CC

## GENERAL

Model	BENETEAU OCEANIS 40 CC
Type	sailing yacht
LOA (m)	12,50
LWL (m)	11,20
Beam (m)	3,95
Draft (m)	1,70
Headroom (m)	1,90
Year built	2000
Builder	BENETEAU
Country	France
Designer	Groupe Finot
Displacement (t)	8,5
Ballast (tonnes)	lead in steel More than 5t
Gross tonnage	17,29
Hull material	GRP
Hull colour	white
Keel type	fin keel
Superstructure material	GRP
Rubbing strake	wood
Deck material	GRP
Deck finish	teak
Superstructure deck finish	non-skid moulded in
Cockpit deck finish	teak
Antifouling (year)	2022
Dorades	yes
Window frame	aluminium
Window material	tempered glass
Deckhatch	yes
Insulation	airfoil
Fuel tank (litre)	stainless steel 200



Level indicator (fuel tank)	yes
Freshwater tank (litre)	GRP X2 500lt (360+140)
Level indicator (freshwater)	yes
Blackwater tank (litre)	GRP 40 Lt for aft WC
Wheel steering	hydraulic
Outside helm position	yes
Emergency tiller	yes

## ACCOMMODATION

Cabins	2
Berths	6
Layout	yes
Floor	parquet
Open cockpit	yes
Saloon	yes
Heating	yes
Navigation center	yes
Chart table	yes
Aft Cabin	yes
Dinette	yes
Dinette to convert into berth	yes
Opening door to aft deck	yes
Galley	yes
Countertop	corian
Sink	stainless steel
Cooker	calor gas
Oven	yes
Gas alarm	yes
Fridge	yes
Freezer	yes
Hot water system	220V + engine



# BENETEAU OCEANIS 40 CC

Water pressure system	electrical
Manual and/or foot pump	yes
Ice maker	yes
Crockery	yes
Owners cabin	double bed
Wardrobe	hanging and shelves
Bathroom	en suite
Toilet	en suite
Toilet system	manual
Wash basin	in the bathroom
Shower	en suite
Guest cabin 1	double bed
Wardrobe	hanging and shelves
Bathroom	en suite
Toilet	en suite
Toilet system	manual
Wash basin	in the bathroom
Shower	en suite

## MACHINERY

No of engines	1
Make	VOLVO PENTA
Type	MD22
HP	59
kW	43.42
Fuel	diesel
Year of overhaul	New belt 2016
Maximum speed (kn)	8
Cruising speed (kn)	7
Consumption (l/hr)	5100704427
Engine cooling system	freshwater heat exchanger



# BENETEAU OCEANIS 40 CC

Drive	shaft
Shaft seal	yes
Engine controls	bowden cable
Gearbox	mechanical New 2018
Bowthruster	electric
Propeller type	folding Autorop Intelligent Propeller + The old one on board as a spare
Propeller blades	X3
Propeller shaft material	stainless steel
Shaft lubrication	water
Manual bilge pump	yes
Electric bilge pump	yes
Bilge alarm	yes
Electrical installation	yes
Start battery	2018
Service battery	X2 2022
Windlass battery	2017
Battery monitor	yes
Battery charger	2017
Battery charger/inverter	yes
Solar panel	2016 2 x 150 Watt + control
Shorepower	with cable
Extra info	With the new Autoprop at 1900 rpm on engine, boat exceeds 7knot

## NAVIGATION

Compass	yes
Electric compass	yes
Depth sounder	yes
Windset	yes
VHF	X2 fitted
VHF handheld	For Cockpit



<b>Autopilot</b>	New Evolution 70 S Display
<b>Radar</b>	2016
<b>GPS</b>	2017
<b>Plotter</b>	New Raymarine Axiom 9 2019 touch screen
<b>AIS transceiver</b>	yes
<b>EPIRB</b>	Smartfind Plus GPS EPIRB
<b>Navigation lights</b>	yes
<b>Searchlight</b>	yes
<b>Extra info</b>	New Navionics Maps of the Mediterranean

## EQUIPMENT

<b>Sprayhood</b>	yes
<b>Bimini</b>	yes
<b>Cockpit cushions</b>	yes
<b>Cockpit table</b>	yes
<b>Bathing platform</b>	yes
<b>Boarding ladder</b>	stainless steel
<b>Transom door</b>	yes
<b>Gangway</b>	Long
<b>Deck shower</b>	yes
<b>Anchor</b>	Rocna New:2016, 20kg
<b>Anchor chain</b>	80m, 10mm
<b>Anchor 2</b>	Fortress At stern
<b>Anchor chain</b>	Roller - Heavy tape at the stern
<b>Windlass</b>	electrical 2017 with separate battery
<b>Dinghy</b>	rigid inflatable 2022
<b>Davits</b>	stainless steel
<b>Davits controls</b>	manual
<b>Sea railing</b>	wire
<b>Grab rail (superstructure)</b>	stainless steel
<b>Life raft</b>	container Needs update



Life raft (pers)	X6
Lifejackets	X4 Automatic with Mounted Ocean Signal
Safety harness	yes
Lifebuoy	yes
Rope cutter	yes
Radar reflector	yes
Fenders	yes
Mooring lines	yes
Spare parts	Impeller for engine
Tools	yes
Radio-cd player	yes
Cockpit speakers	New 2019
Speakers in salon	yes
Clock - barometer	yes
Fire extinguisher	yes
Extinguisher in engine room	yes
Auto extinguisher system	yes
Extra info	The autoprop screw provides no resistance when sailing with sail

## RIGGING

Rigging	sloop
Standing rigging	wire
Material mast	aluminium
Spreaders	X2
Mainsail	yes
Genoa	yes
Stormjib	yes
Multifunctional winches	Harken UniPower 900 Electric Lap Winch
Gennaker pole	Steel wire



# BENETEAU OCEANIS 40 CC



# BENETEAU OCEANIS 40 CC



# BENETEAU OCEANIS 40 CC



# BENETEAU OCEANIS 40 CC



# BENETEAU OCEANIS 40 CC



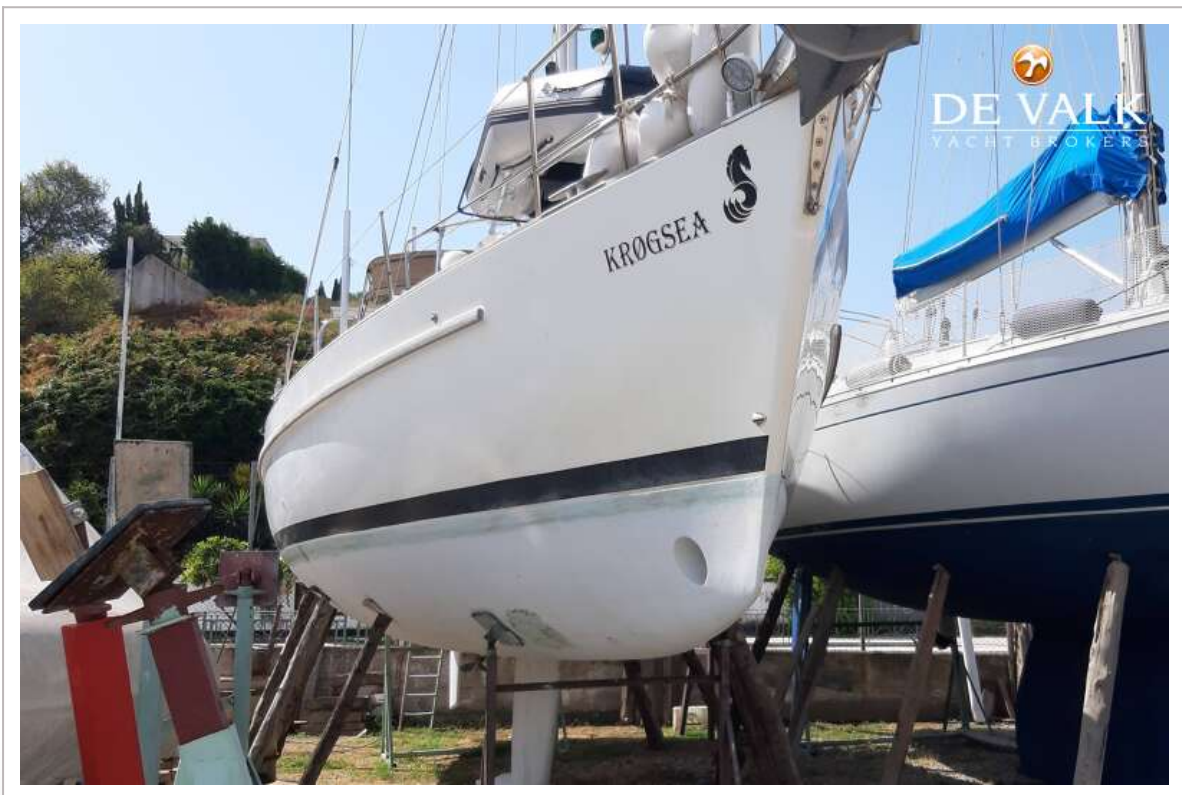
# BENETEAU OCEANIS 40 CC

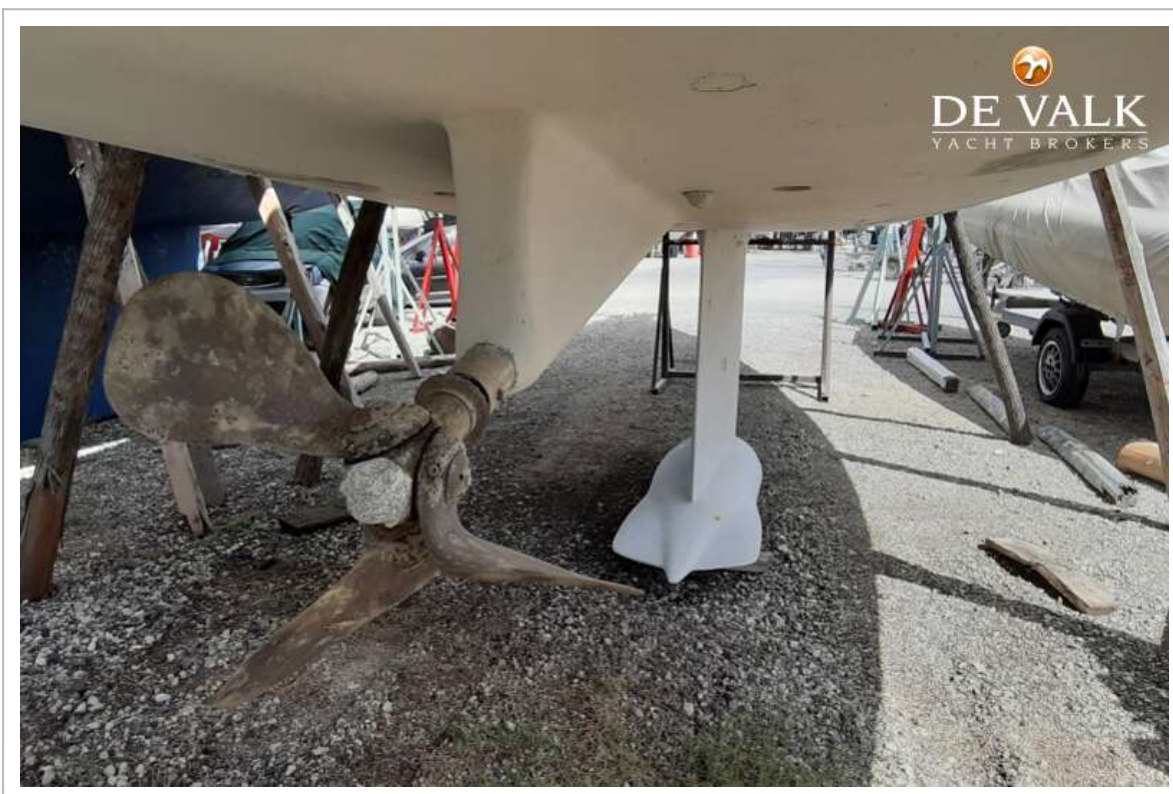


# BENETEAU OCEANIS 40 CC



# BENETEAU OCEANIS 40 CC





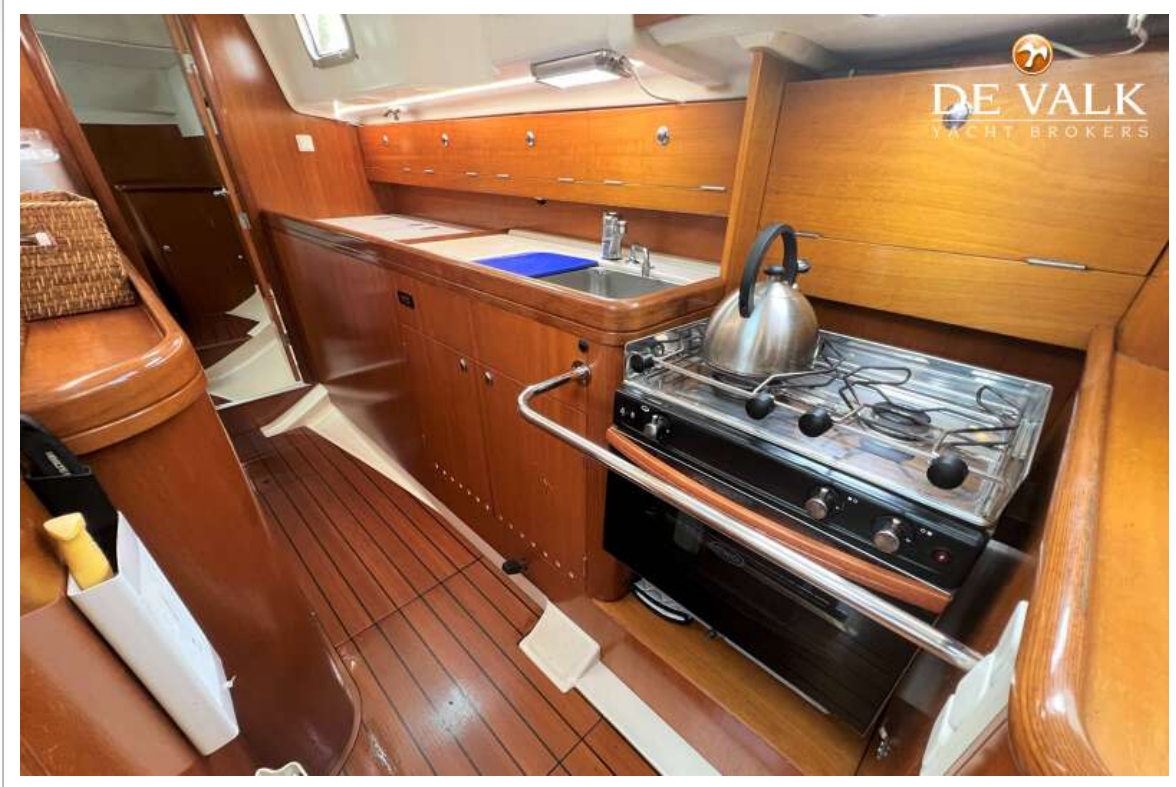
# BENETEAU OCEANIS 40 CC



# BENETEAU OCEANIS 40 CC



# BENETEAU OCEANIS 40 CC



# BENETEAU OCEANIS 40 CC



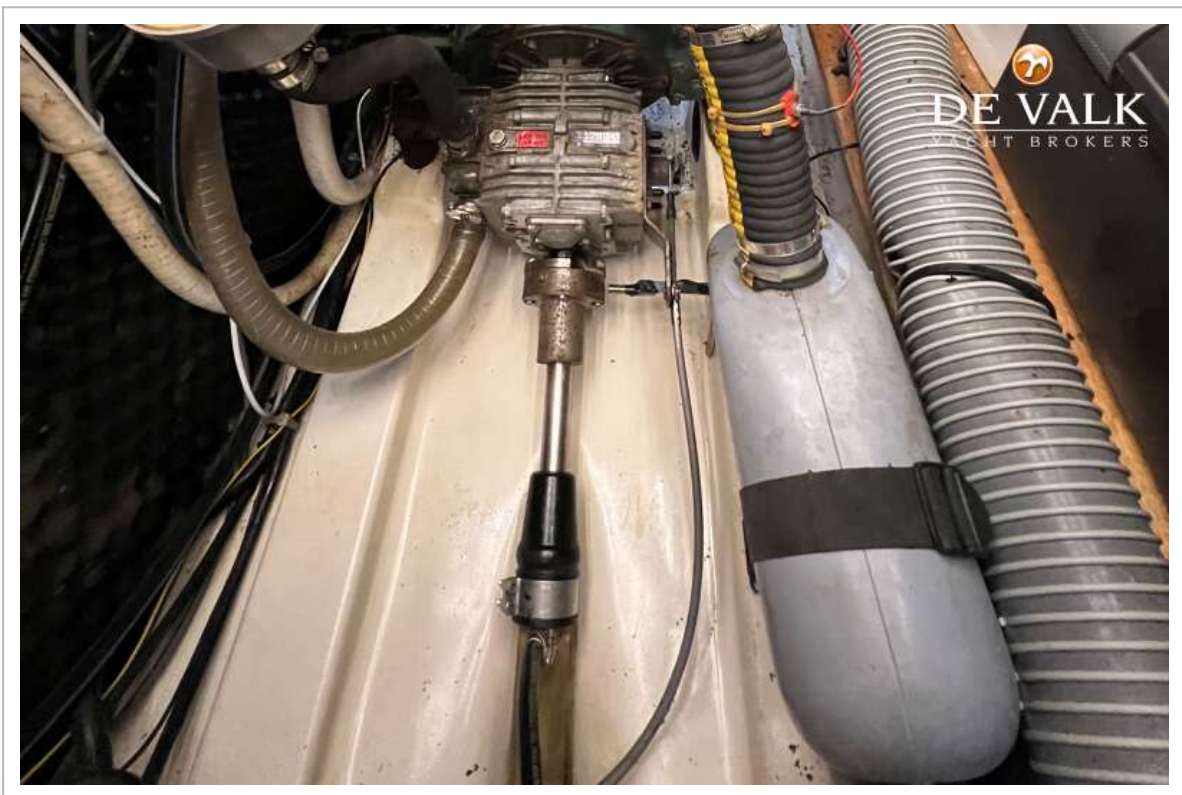
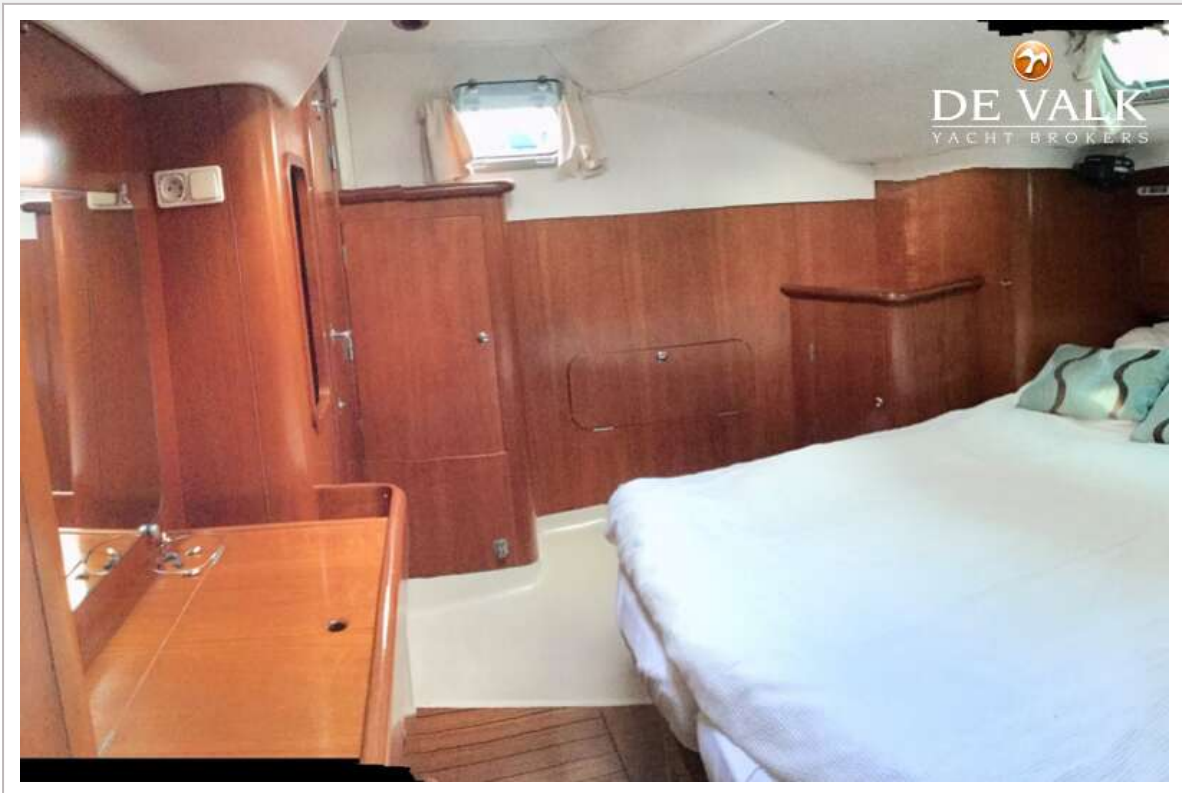
# BENETEAU OCEANIS 40 CC



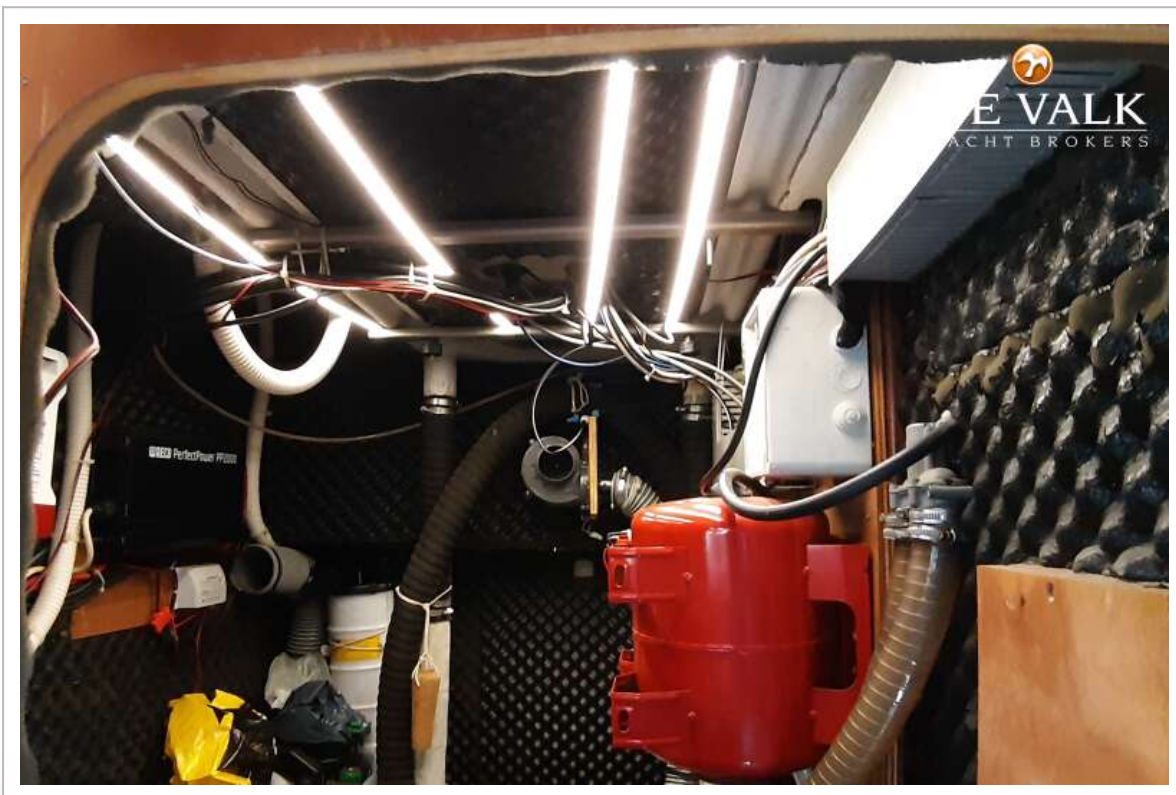
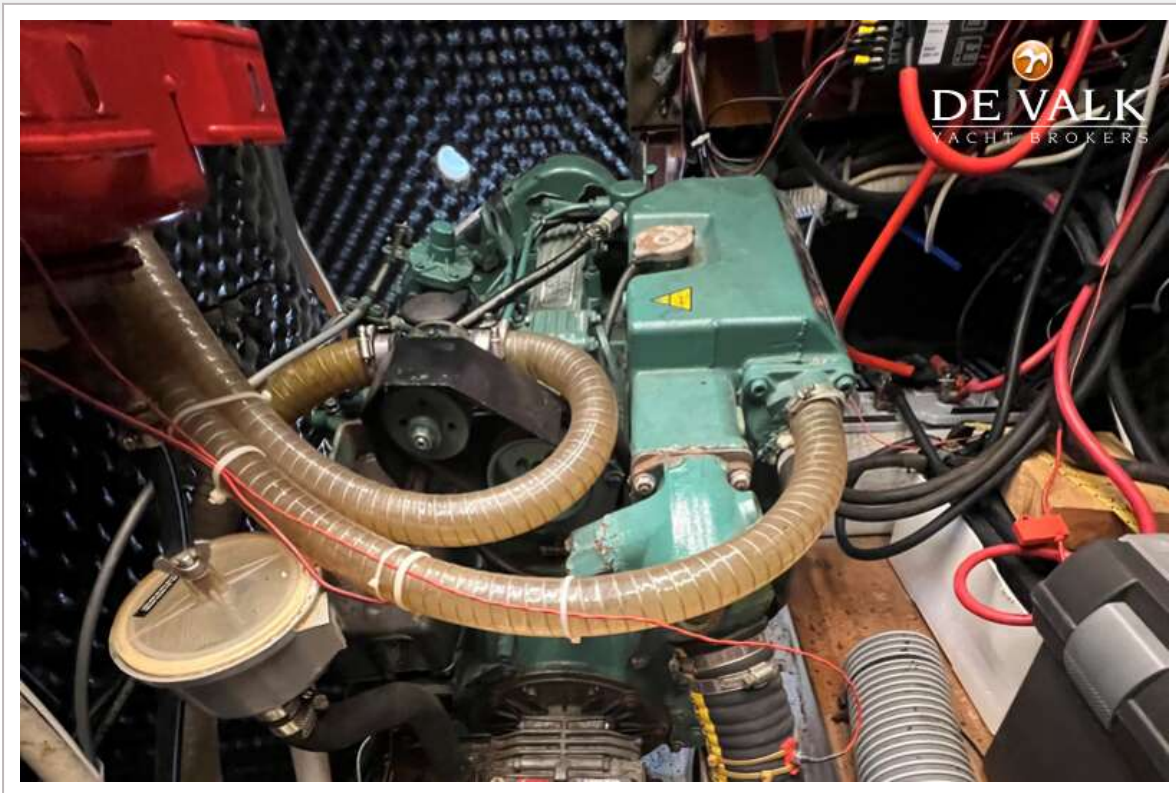
# BENETEAU OCEANIS 40 CC



# BENETEAU OCEANIS 40 CC



# BENETEAU OCEANIS 40 CC



# BENETEAU OCEANIS 40 CC

