



DE VALK
YACHT BROKERS



BAVARIA 36 CRUISER



DE VALK
YACHT BROKERS

BAVARIA 36 CRUISER

BROKER'S COMMENTS

The Bavaria Cruiser 36 is designed with a couple or single-handed sailor in mind. She is thus very family friendly. The decks are remarkably clean and uncluttered. She is generally one of the best high-volume boats in the eleven-meter class from her time. A spacious, also variable saloon. Sufficiently large aft cabins. Shelves, cupboards and storage space everywhere. She just sailed back from Sicily and is in ready to go conditions.

Jörg Hellmich

SPECIFICATIONS

Dimensions	11.40 x 3.60 x 1.55 (m)	Builder	Bavaria Yachtbau
Built	2003	Cabins	3
Material	GRP	Berths	8
Engine(s)	1 x Volvo Penta MD2020 diesel	Hp/Kw	19.00 (hp), 13.98 (kw)
Asking price	sold (VAT)	Lying	at sales office

CONTACT

Sales office	De Valk Almeria	Telephone	+34 950 497 825
Address	Puerto Deportivo, Darsena de la Batea 42 04711 Almerimar ES	E-mail	almeria@devalk.nl

DISCLAIMER

These particulars are given in good faith as supplied but cannot be guaranteed.



BAVARIA 36 CRUISER

GENERAL

Model	BAVARIA 36 CRUISER
Type	sailing yacht
LOA (m)	11,40
LWL (m)	9,49
Beam (m)	3,60
Draft (m)	1,55
Air draft (m)	16,50
Headroom (m)	1,85
Year built	2003
Launched	2003
Builder	Bavaria Yachtbau
Country	Germany
Designer	J&J Design
Displacement (t)	4,7
Ballast (tonnes)	1,34
CE norm	A
Hull material	GRP
Hull colour	white
Hull shape	round-bilged
Keel type	fin keel
Superstructure material	GRP
Deck material	GRP
Deck finish	non-skid moulded in
Superstructure deck finish	non-skid moulded in
Cockpit deck finish	teak
Antifouling (year)	2022
Window frame	aluminium
Window material	perspex
Deckhatch	yes
Fuel tank (litre)	polyethylene 150



BAVARIA 36 CRUISER

Level indicator (fuel tank)	Gauge
Freshwater tank (litre)	polyethylene 120 + 130
Level indicator (freshwater)	Gauge
Blackwater tank (litre)	polyethylene 80
Blackwater tank extraction	deck extraction + pump
Wheel steering	cable steering
Outside helm position	cable steering
Emergency tiller	yes
More info on hull	In very good conditions

ACCOMMODATION

Cabins	3
Berths	8
Interior	mahogany
Layout	yes
Floor	teak
Saloon	yes
Headroom saloon (m)	1,85
Chart table	yes
Convertible berth	In saloon
Galley	L-shape
Countertop	corian
Sink	stainless steel Double
Cooker	calor gas Eno 2 burner
Oven	yes
Fridge	yes
Freezer	Compartment in fridge
Hot water system	220V + engine Boiler
Water pressure system	electrical New pump 2021
Manual and/or foot pump	yes
Crockery	yes



BAVARIA 36 CRUISER

Owners cabin	v-bed Forward
Bed length (m)	2,00
Wardrobe	hanging/drawers/shelves
Bathroom	en suite
Toilet	en suite
Toilet system	manual
Wash basin	at the toilet
Shower	en suite
Guest cabin 1	double bed Aft Port
Bed length (m)	2,00 x 1,60
Wardrobe	hanging and shelves
Bathroom	shared
Toilet	shared
Toilet system	manual
Wash basin	at the toilet
Shower	shared
Guest cabin 2	double bed Aft STB
Bed length (m)	2,00 x 1,60
Wardrobe	hanging and shelves
Bathroom	shared
Toilet	shared
Toilet system	manual
Wash basin	at the toilet
Shower	shared

MACHINERY

No of engines	1
Make	Volvo Penta
Type	MD2020
HP	19
kW	13.98



BAVARIA 36 CRUISER

Fuel	diesel
Year installed	2003
Year of overhaul	Cylinderhead 2017
Maximum speed (kn)	7
Cruising speed (kn)	6
Consumption (l/hr)	1,5
Range (nm)	600
Engine hours	3400
Engine cooling system	freshwater heat exchanger
Drive	sail-drive
Saildrive seal	yes
Engine controls	bowden cable
Gearbox	hydraulic
Exhaust	watercooled Overhauled
Propeller type	fixed
Propeller blades	2
Propeller shaft material	stainless steel
Shaft lubrication	water
Manual bilge pump	yes
Electric bilge pump	yes
Electrical installation	12 Volt
Start battery	1 x 12V / 105 Ah
Service battery	2 x 12V / 135 Ah
Battery monitor	Gauge
Battery charger	Cristel 25 Ah
Solar panel	Flex (150W)
Diode battery combiners	Votronic MPP16S
Shorepower	with cable 230V

NAVIGATION

Compass	Plastimo
----------------	----------



BAVARIA 36 CRUISER

Depth sounder/log	Raymarine ST60 tri
Windset	Raymarine ST60
VHF	Shipmate
Autopilot	Raymarine ST70
Wind vane steering install.	Windpilot Nodsee II (needs installation)
Rudder angle indicator	Raymarine ST60
GPS	Navman Tracker500
Electronic chart(s)	Med. Almanac + Irvan
AIS transponder	Easy TRX2 class B
EPIRB	Ocean Signal (2018)
Navigation lights	yes
Extra info	Interior in good conditions

EQUIPMENT

Sprayhood	yes
Bimini	yes
Sun awning	yes
Cockpit cushions	yes
Cockpit table	yes
Bathing platform	yes
Boarding ladder	stainless steel
Transom door	yes
Gangway	yes
Deck shower	yes
Anchor	Rocna
Anchor chain	56 m
Anchor 2	Bruce
Anchor chain	3 x 40 m rope
Windlass	electrical Lofrans
Dinghy	inflatable Plastimo 2.6
Outboard	Suzuki 2 HP



BAVARIA 36 CRUISER

Outboard support	yes
Sea railing	wire
Grab rail (superstructure)	stainless steel
Pushpit	yes
Pulpit	yes
Life raft	container Seacurity (2012)
Life raft (pers)	4 persons
Last life raft survey	04.2021
Lifejackets	yes
Safety harness	yes
Lifebuoy	Ring
Safety lines on deck	(2018)
Radar reflector	yes
Fenders	yes
Mooring lines	yes
Spare parts	yes
Tools	yes
Clock - barometer	yes
Fire extinguisher	4 units
Extra info	Diving gear

RIGGING

Rigging	fractional
Standing rigging	wire Original
Brand mast	Seldén
Material mast	aluminium
Spreaders	2 sets
Mainsail	Elvström (2014) in good condition
Genoa	Elvström (2015) in good condition
Genoa furler	Furlex 200S
Reefing System	main in-mast furling



BAVARIA 36 CRUISER

Backstay adjuster	tackle
Boomvang	tackle
Primary sheet winch	40" ST 2 SP Harken
Halyard winches	16" ST 2 SP Harken



BAVARIA 36 CRUISER



BAVARIA 36 CRUISER



BAVARIA 36 CRUISER



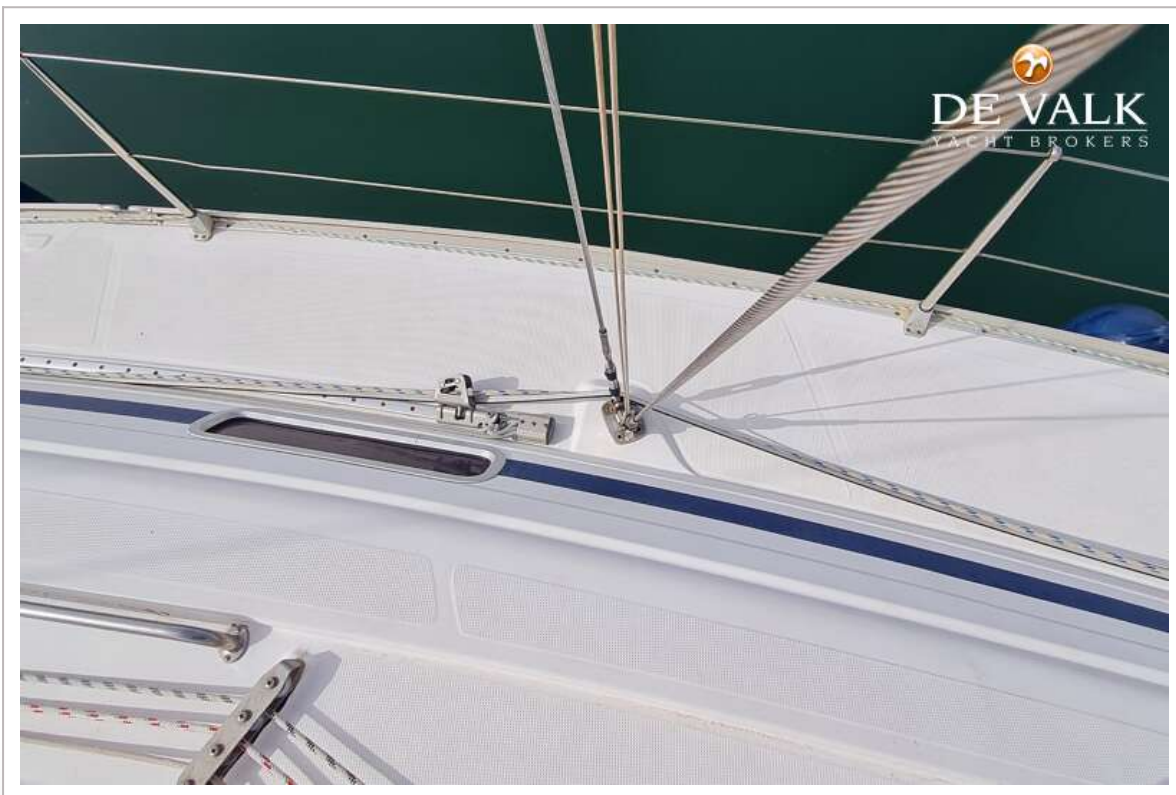
BAVARIA 36 CRUISER



BAVARIA 36 CRUISER



BAVARIA 36 CRUISER



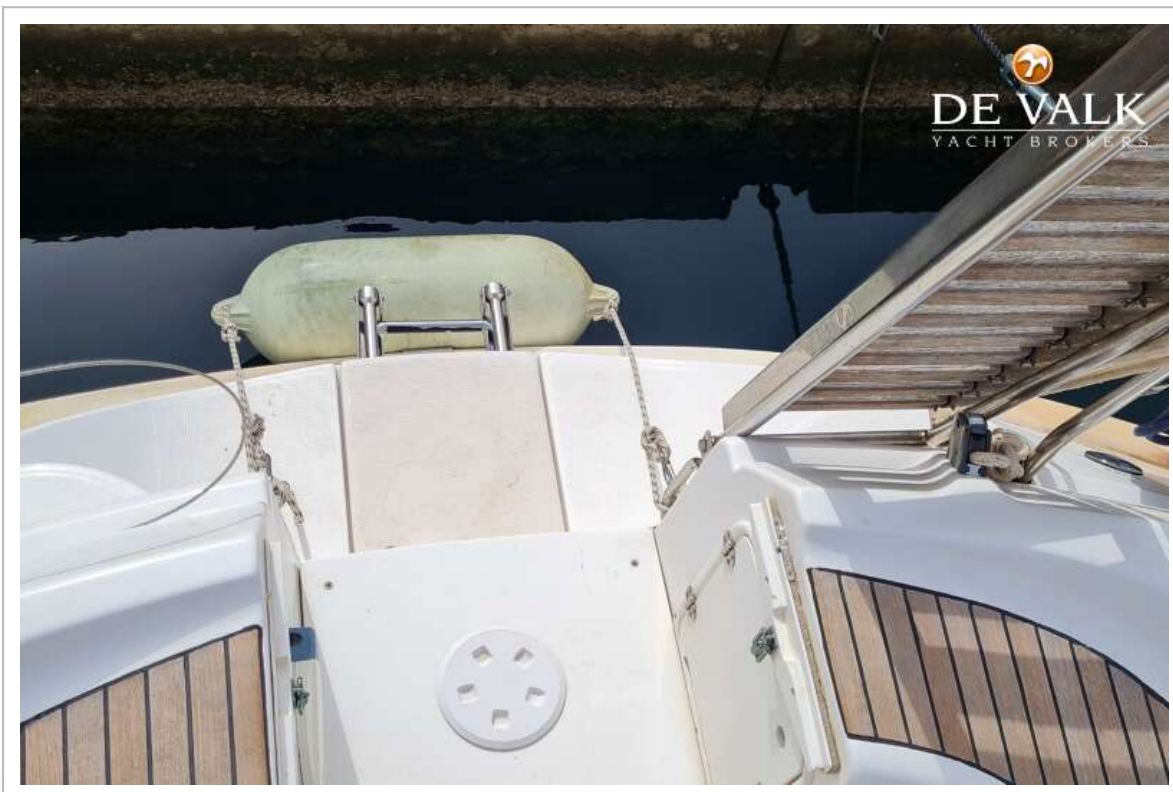
BAVARIA 36 CRUISER



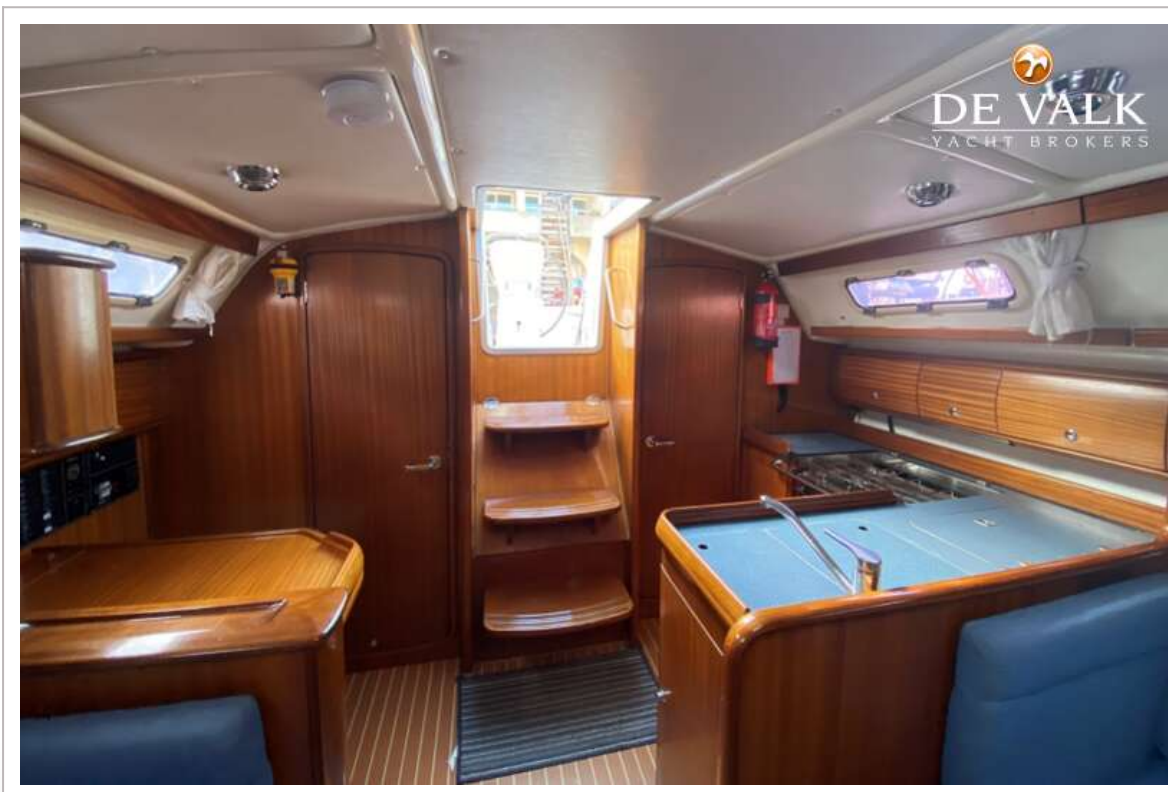
BAVARIA 36 CRUISER



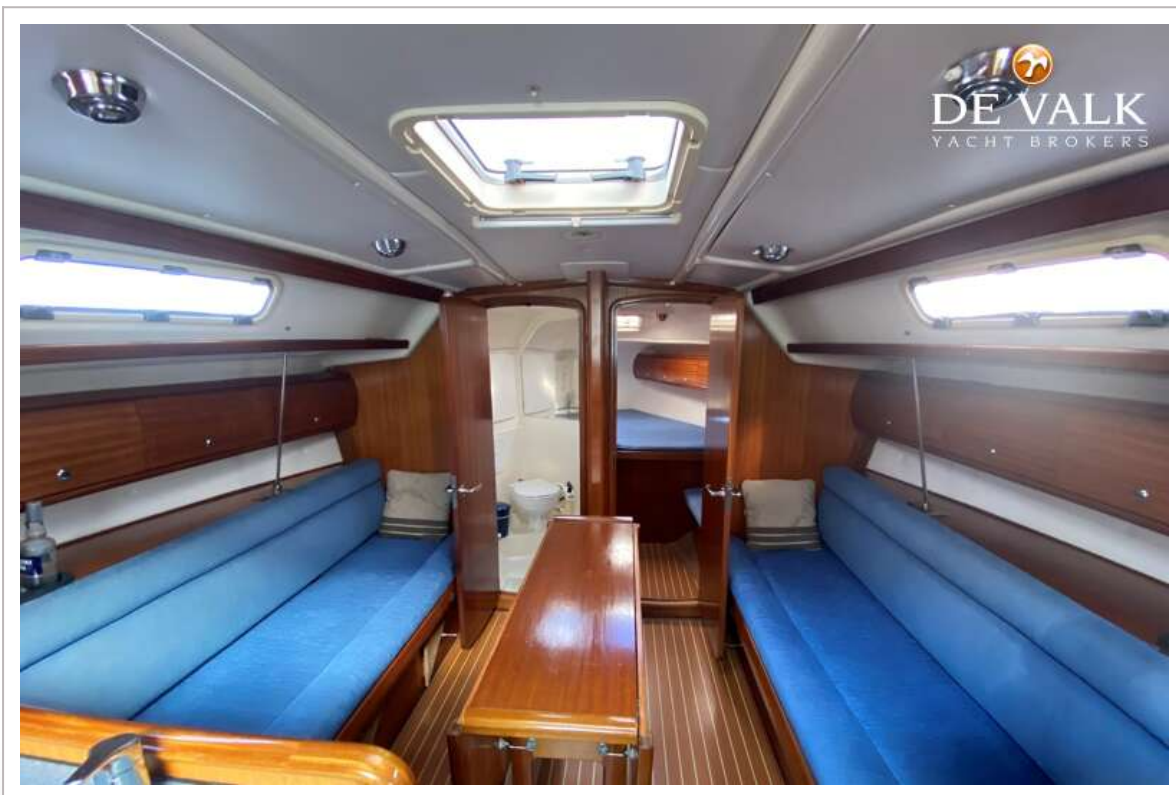
BAVARIA 36 CRUISER



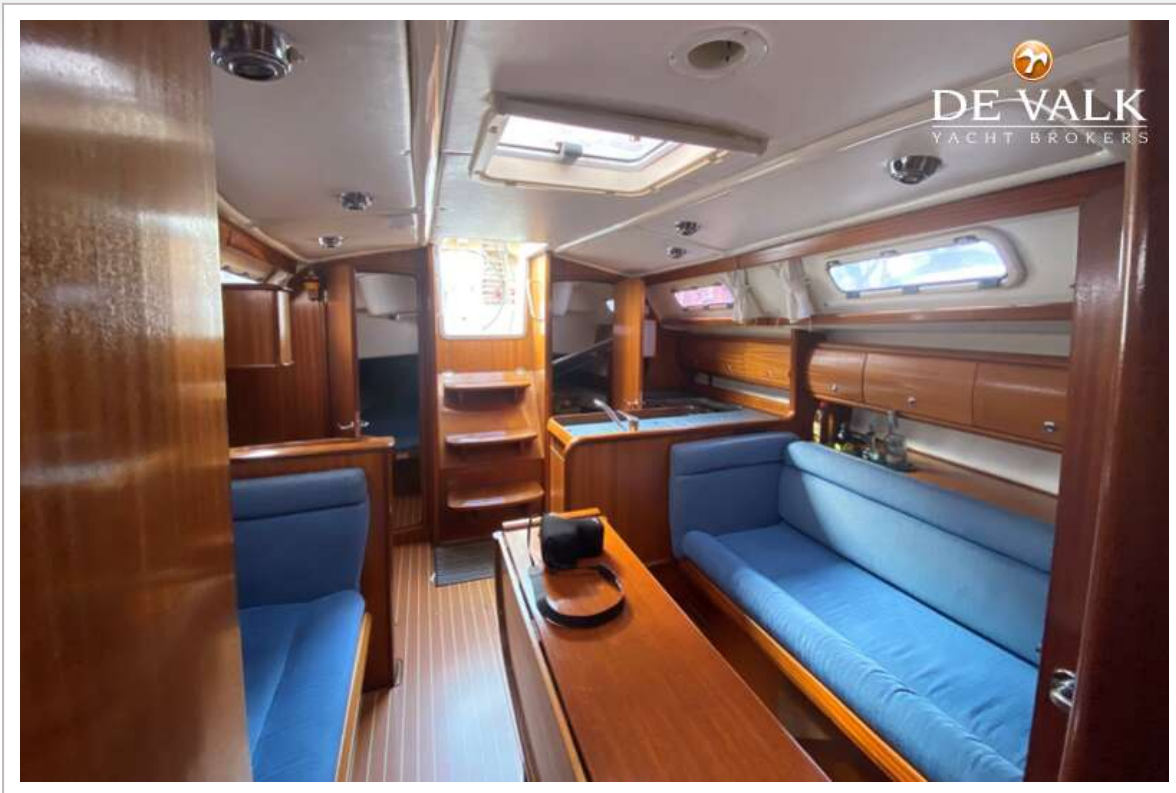
BAVARIA 36 CRUISER



BAVARIA 36 CRUISER



BAVARIA 36 CRUISER



BAVARIA 36 CRUISER



BAVARIA 36 CRUISER



BAVARIA 36 CRUISER



BAVARIA 36 CRUISER



BAVARIA 36 CRUISER



BAVARIA 36 CRUISER



BAVARIA 36 CRUISER



BAVARIA 36 CRUISER

