



SEAROCCO 1500



DE VALK
YACHT BROKERS

BROKER'S COMMENTS

Searocco 1500 " Catriona" is build in 2004 as a seagoing luxury yacht with double cabins and bathroom each, designed by Vripack - Holland and equipped for long extended voyages, being largely self-sufficient with her twin Volvo Penta engines, bow- and stern thruster, generator, stabilizers, double glazing and central heating. She is build to a quality design, and constructed from first-class materials throughout. Overall, a well build motor yacht for exploring the inland and coastal waterways. She can be seen in our sales marina in Katwoude.

Reinier van der Wolf

SPECIFICATIONS

Dimensions	14.97 x 4.94 x 1.30 (m)	Builder	M. Poluk OGEM Searocco B.V., Ubbergen
Built	2004	Cabins	2
Material	Steel	Berths	4
Engine(s)	2 x Volvo Penta TAMD41H-B (BT) diesel	Hp/Kw	2 x 145.00 (hp), 106.72 (kw)
Asking price	sold (VAT)	Lying	at sales office

CONTACT

Sales office	De Valk Monnickendam B.V.	Telephone	+31 (0)299 65 63 50
Address	Hoogedijk 6 1145 PM Katwoude NL	E-mail	monnickendam@devalk.nl

DISCLAIMER

These particulars are given in good faith as supplied but cannot be guaranteed.



GENERAL

Model	SEAROCCO 1500
Type	motor yacht
LOA (m)	14,97
Beam (m)	4,94
Draft (m)	1,30
Air draft min (m)	3,45
Headroom (m)	2,00
Year built	2004
Builder	M. Poluk OGEM Searocco B.V., Ubbergen
Country	The Netherlands
Designer	Vripack Yachting
Displacement (t)	32
CE norm	A
Hull material	steel
Hull colour	green
Hull shape	round-bilged With flared bow and three watertight compartments
Keel type	long keel
Superstructure material	aluminium Seawater resistant aluminium ALMG 4.5 MN
Rubbing strake	stainless steel
Deck material	steel
Deck finish	teak 8 mm. (seals renovated 2015)
Cockpit deck finish	teak 8 mm. (seals renovated 2015)
Antifouling (year)	Hempel 9000 Parts sanding, pickling and complete painting 2022
Window frame	aluminium
Window material	double glazing Lightly tinted
Deckhatch	2x
Portholes	yes
Insulation	foam 35 mm. (see extra info in regards of the insulation)
Flybridge	8 mm. teak (seals renovated 2015)
Flybridge suncover	(bimini) with s/s frame and cover



Radar arch	collapsible
Mast can be lowered	yes
Fuel tank (litre)	steel Total 5000 with inspection manholes integrated in hull
Fuel daytank (litre)	stainless steel 3mm. with sight glass
Freshwater tank (litre)	stainless steel 1000 (3mm)
Blackwater tank (litre)	stainless steel 300 (3mm)
Wheel steering	hydraulic
Inside helm position	yes
Outside helm position	yes
Extra info	The spaces between the panelling of skin, decks, gangway, forepeak bulkheads and interior walls are filled with polyurethane insulation foam.

ACCOMMODATION

Cabins	2
Berths	4
Interior	teak
Floor	carpet Renewed in 2019
Aft deck	yes
Pilot house/deck saloon	yes
Saloon	L-shaped settee
Headroom saloon (m)	1.95
Heating	central heating Kabola B12 (complete revision 2015)
Dinette	yes
Opening door to aft deck	yes
Galley	varnished teak L-shaped
Countertop	wood
Sink	stainless steel
Cooker	ceramic Miele 4 Zone
Oven	Moulinex
Extractor	yes
Microwave	Whirpool + grill



Fridge	yes
Hot water system	on central heating Kabola B12
Water pressure system	electrical New Jabsco pump (2022)
Dishwasher	Miele
Owners cabin	French bed + partition for 2 singles
Wardrobe	yes
Bathroom	en suite
Toilet	en suite
Toilet system	electric
Wash basin	in the bathroom
Shower	en suite
Extra info	with slatted springbed + mattresses 2019
Guest cabin 1	French bed + partition for 2 singles
Wardrobe	yes
Bathroom	yes
Toilet	yes
Toilet system	electric
Wash basin	yes
Shower	yes
Extra info	slatted springbed
Washing machine/dryer combi	Miele
Flybridge	yes

MACHINERY

No of engines	2
Make	Volvo Penta
Type	TAMD41H-B (BT)
HP	145
kW	106.72
Fuel	diesel
Year installed	2004



Maximum speed (kn)	10.6
Cruising speed (kn)	8
Engine hours	3300
Engine cooling system	freshwater heat exchanger
Drive	shaft
Shaft seal	replaced in 2016 2x
Engine controls	electrical Volvo Penta EC
Gearbox	hydraulic
Bowthruster	electric Double prop BP1200 24v, 7kW QL
Sternthruster	electric (2022)
Exhaust	watercooled
Propeller type	fixed
Propeller blades	4x
Propeller shaft material	stainless steel
Shaft lubrication	water
Electric bilge pump	yes
Bilge alarm	yes
Generator	Onan e-QD 7kVA at 1500 rpm
Batteries	24V - 1600A
Start battery	Replaced in 2015
Service battery	Replaced in 2018
Bowthruster battery	Replaced in 2021
Battery charger/inverter	Mastervolt (2021) 24 / 75A (2021)
Shorepower	with cable
Stabilizers	fin Koopnautic Searocq 1522
Extra info	Complete engine service 2019/2020 including heat exchangers
Extra info	Gearbox oilcooler replaced

NAVIGATION

Electric compass	Simrad RC42 Fluxgate (2015)
Windset	Electronic Simrad Windvane



Repeater	2x Simrad at flybridge steering position
VHF	Simrad RS86 DSC + Simrad RS40 DSC + AIS
Autopilot	Simrad AP28 (2015) + AP24 (2015)
Rudder angle indicator	through autopilot screen + Simrad chart plotter screen
Radar	Simrad 4G (2015) + JMR 5300
Plotter	Simrad NSS7m (2015) + NSS Evo 3S (2021)
Camera	with monitoring at principal steering position, engine room and aft.
Navigation lights	yes
Searchlight	Incl. space bulb
Loudhailer	yes
Extra info	yes

EQUIPMENT

Cockpit chairs	yes
Bathing platform	teak laid
Boarding ladder	stainless steel
Transom door	yes
Deck shower	hot and cold water
Anchor	Rocna 40 kg
Anchor chain	80 m. 10 mm. (2022)
Windlass	electrical Lowfrans Tigres 24v 1200 W
Dinghy	Aluminium bottom rib (2021)
Outboard	9.9 hp (2021)
Deck crane	Electro-hydraulic crane on fly bridge (250 kg)
Sea railing	yes
Grab rail (superstructure)	stainless steel
Railing side opening gates	yes
Life raft	container (2022)
Life raft (pers)	6
Wiper	5x with washers



Horn	yes
Fenders	yes
Mooring lines	yes
TV	+ Apple tv
Radio-cd player	yes
Clock - barometer	yes



SEAROCCO 1500



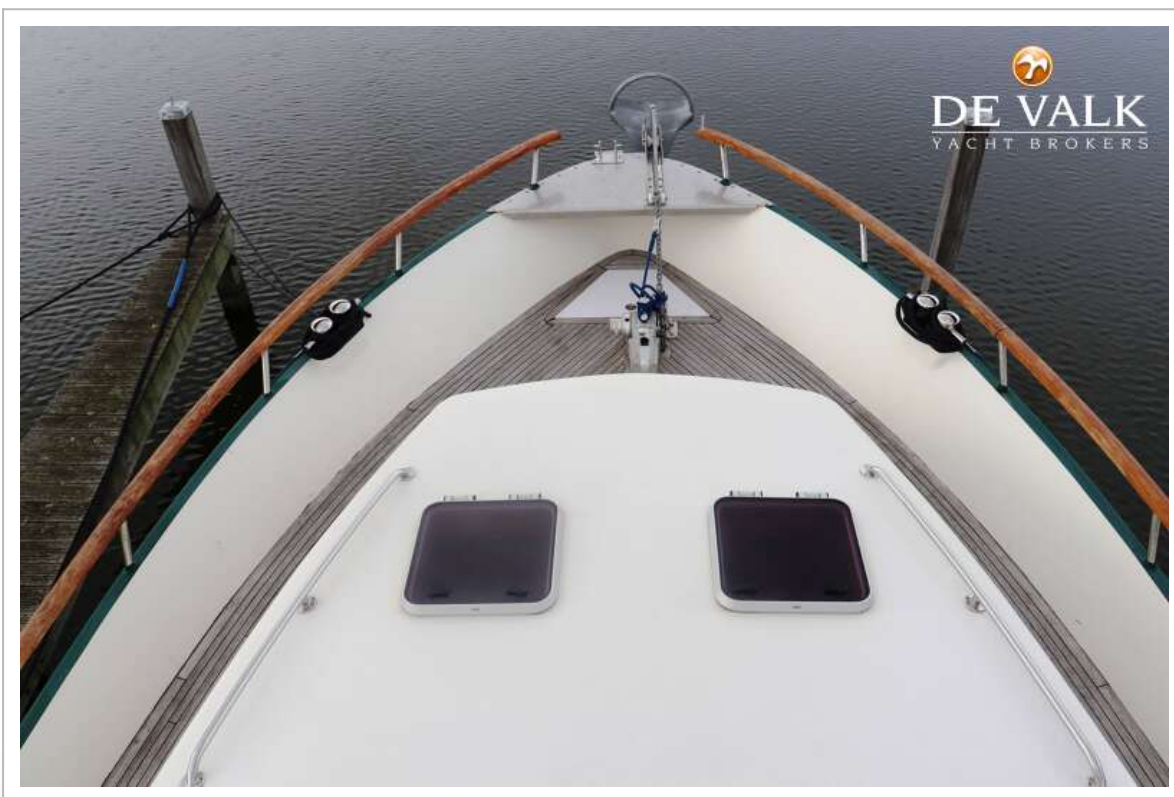
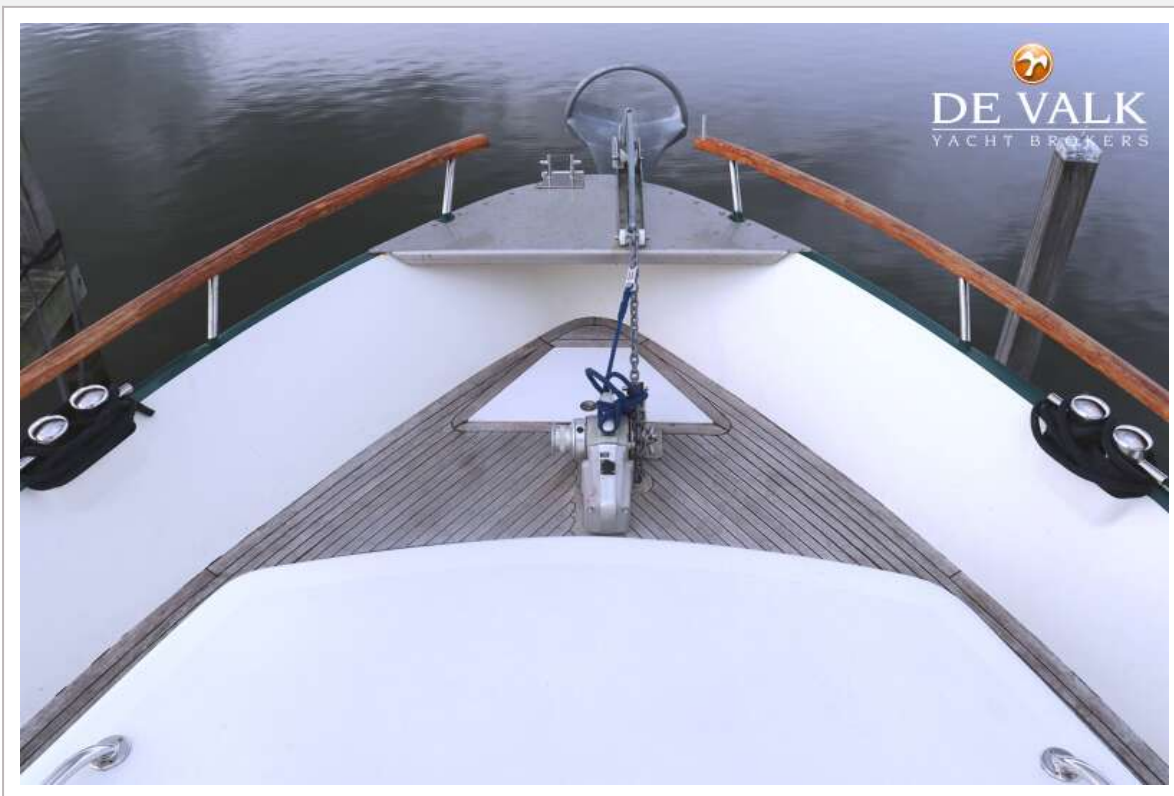
SEAROCCO 1500

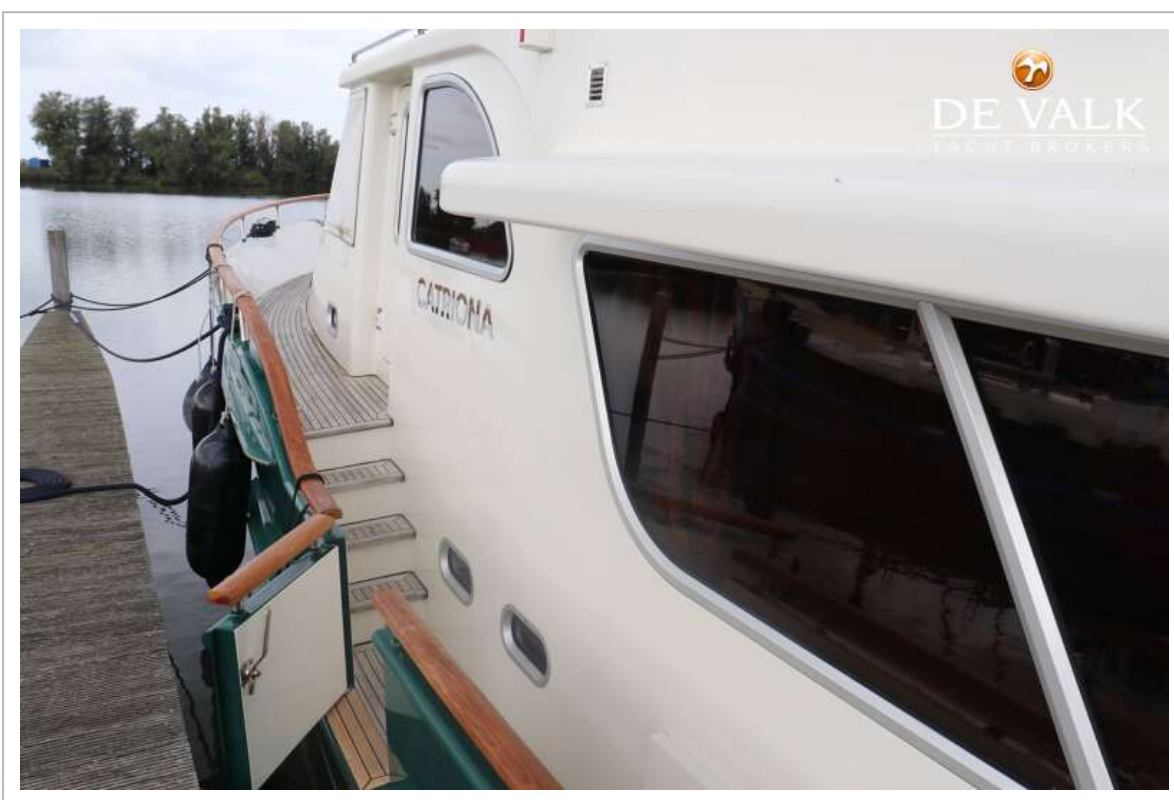
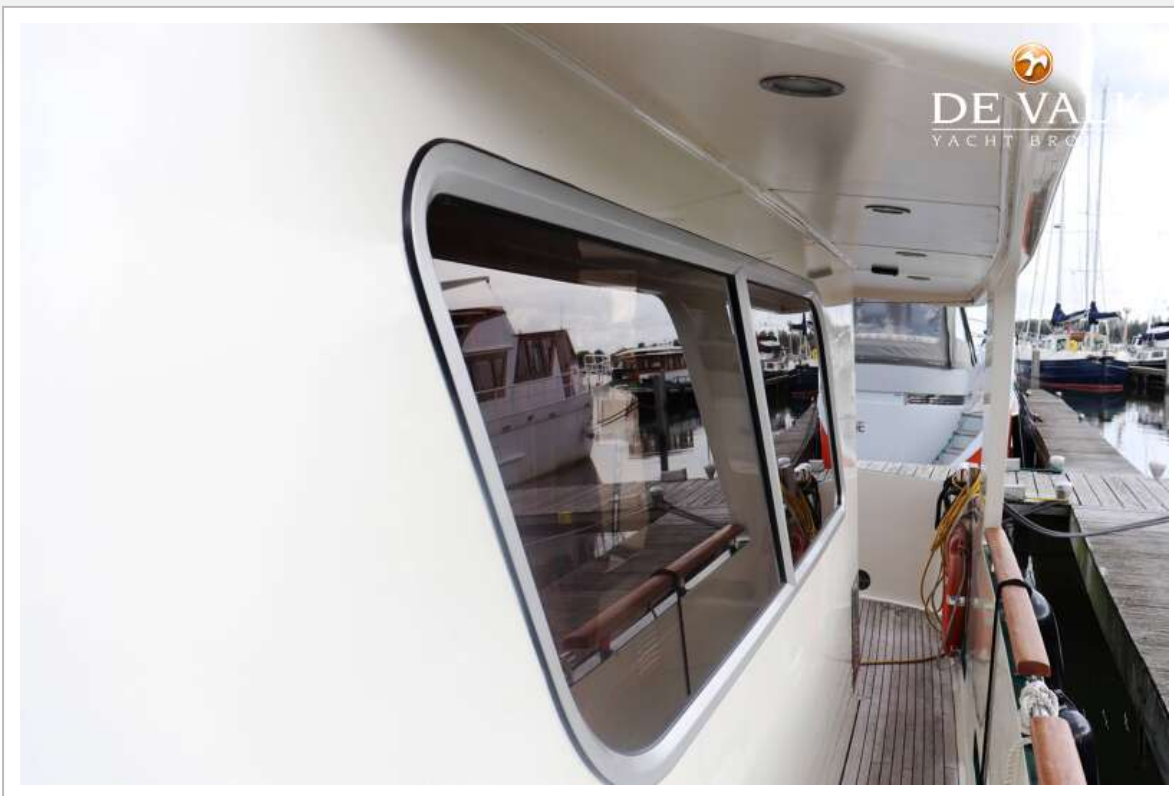


SEAROCCO 1500



SEAROCCO 1500

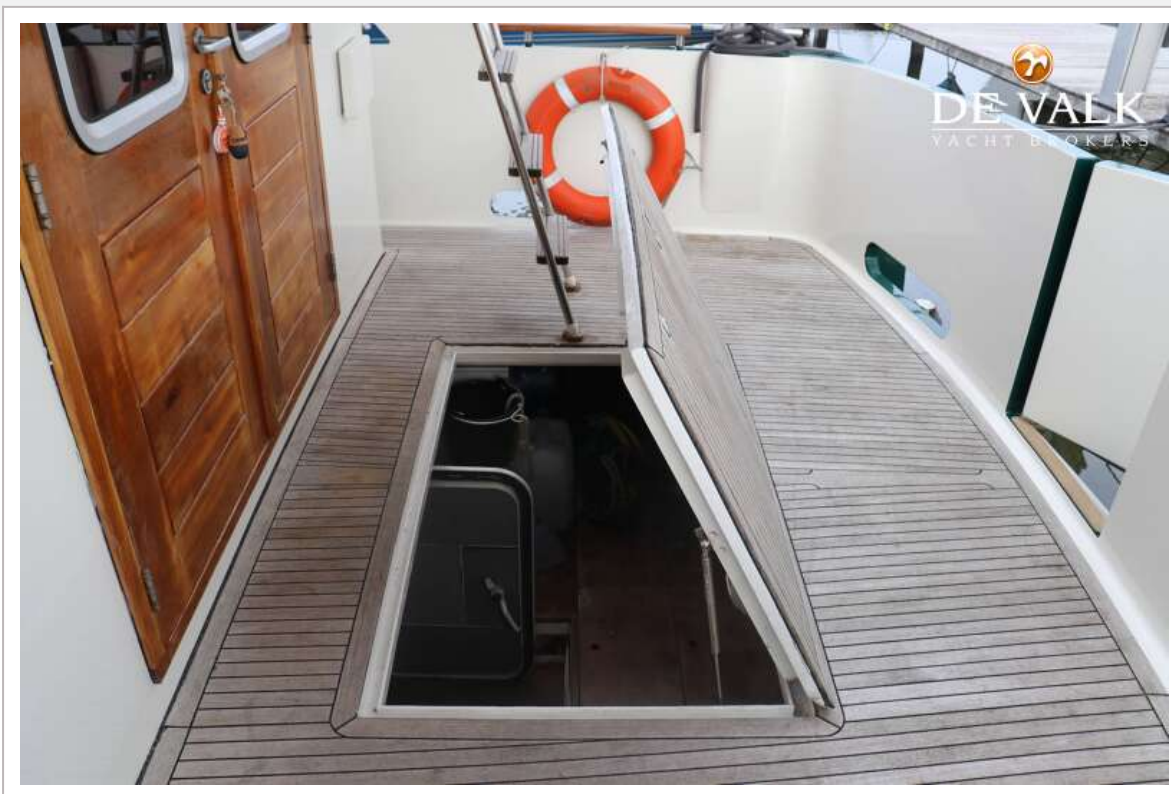




SEAROCCO 1500



SEAROCCO 1500



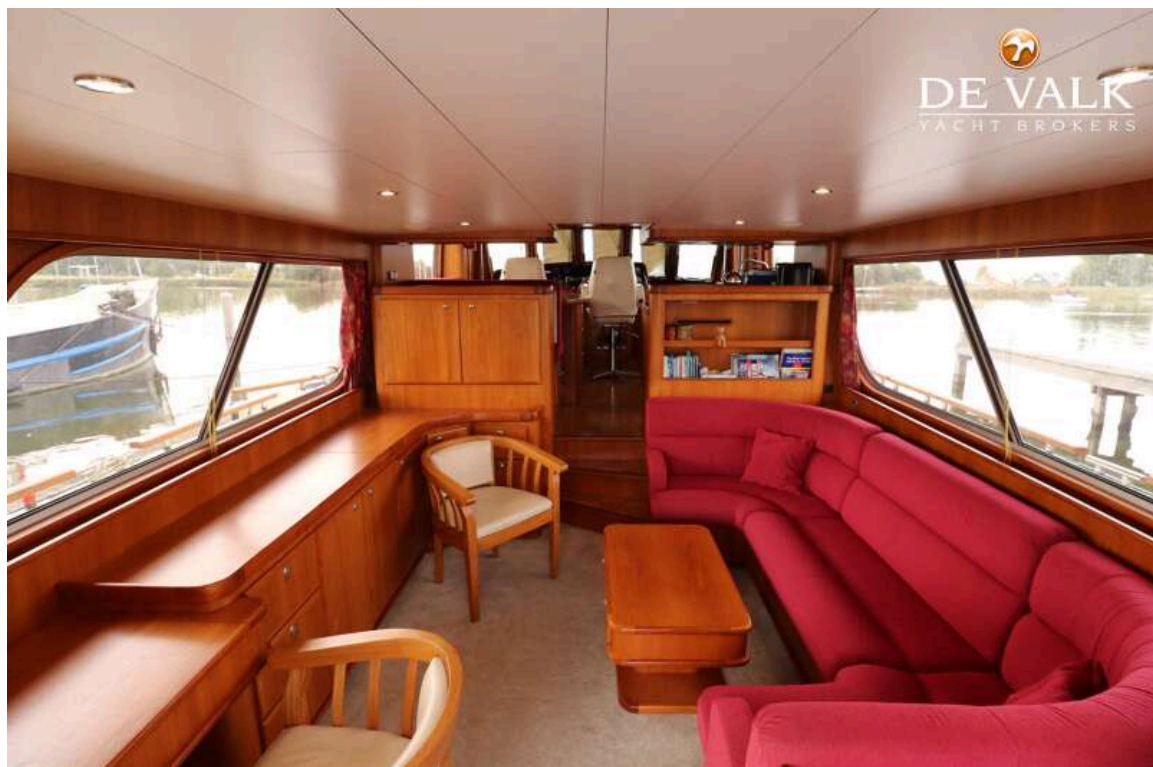
SEAROCCO 1500



SEAROCCO 1500



SEAROCCO 1500



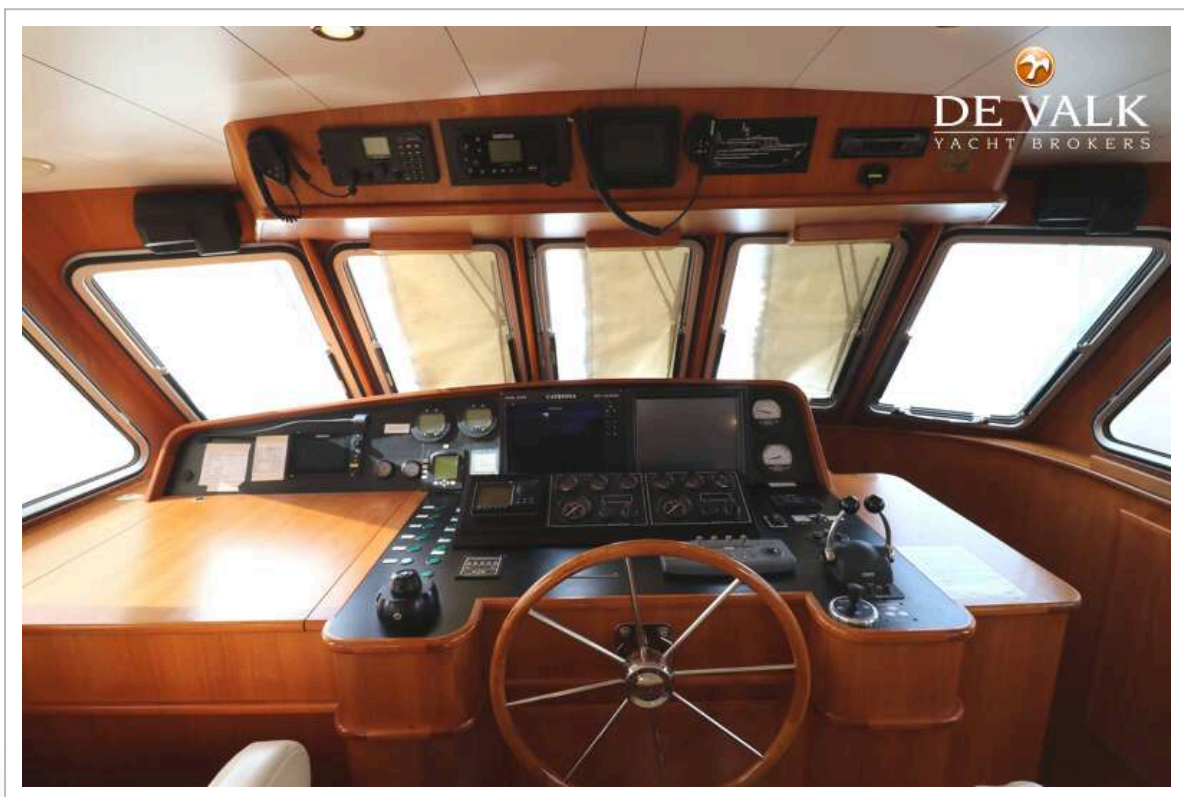
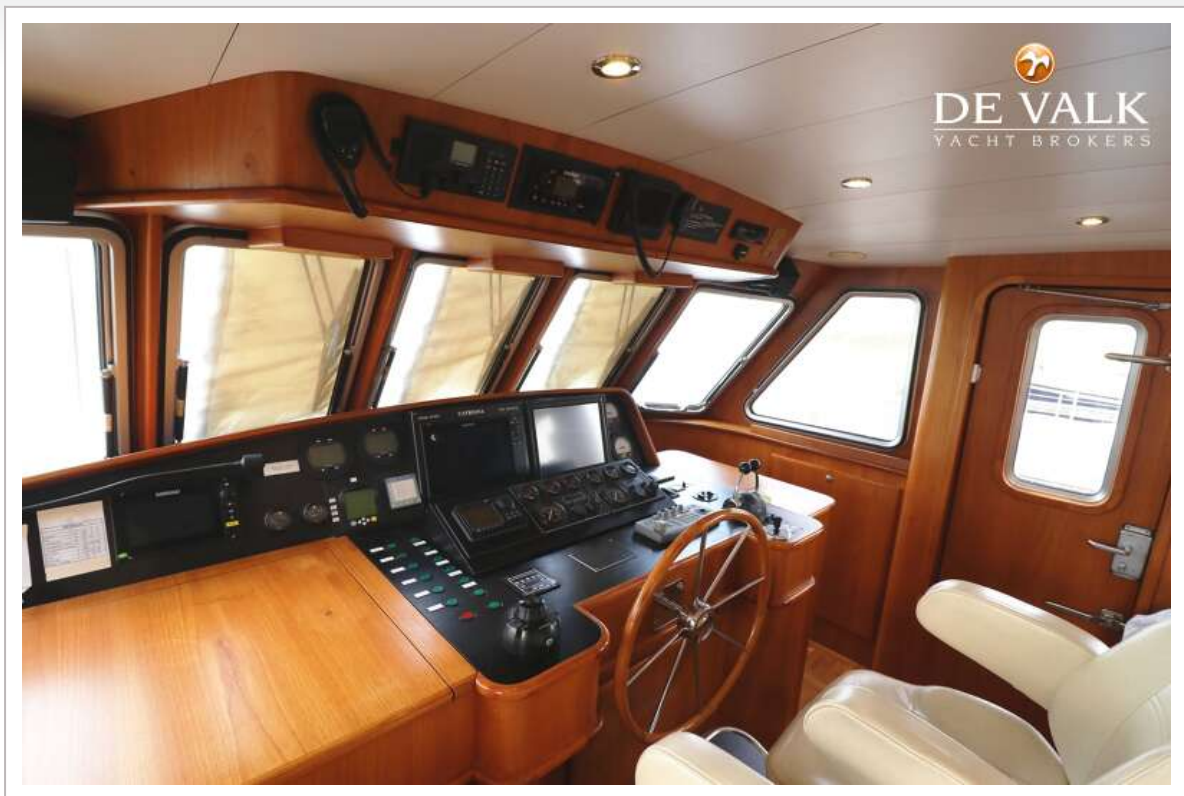
SEAROCCO 1500



SEAROCCO 1500



SEAROCCO 1500

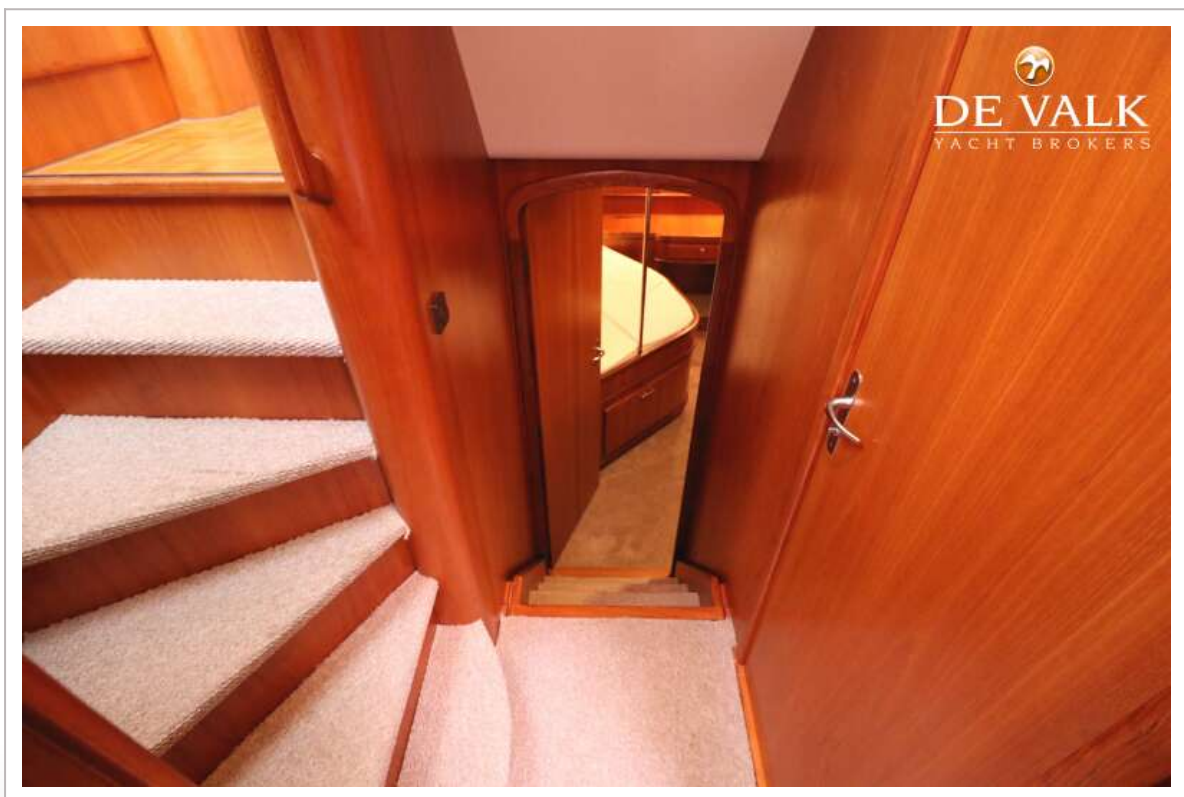


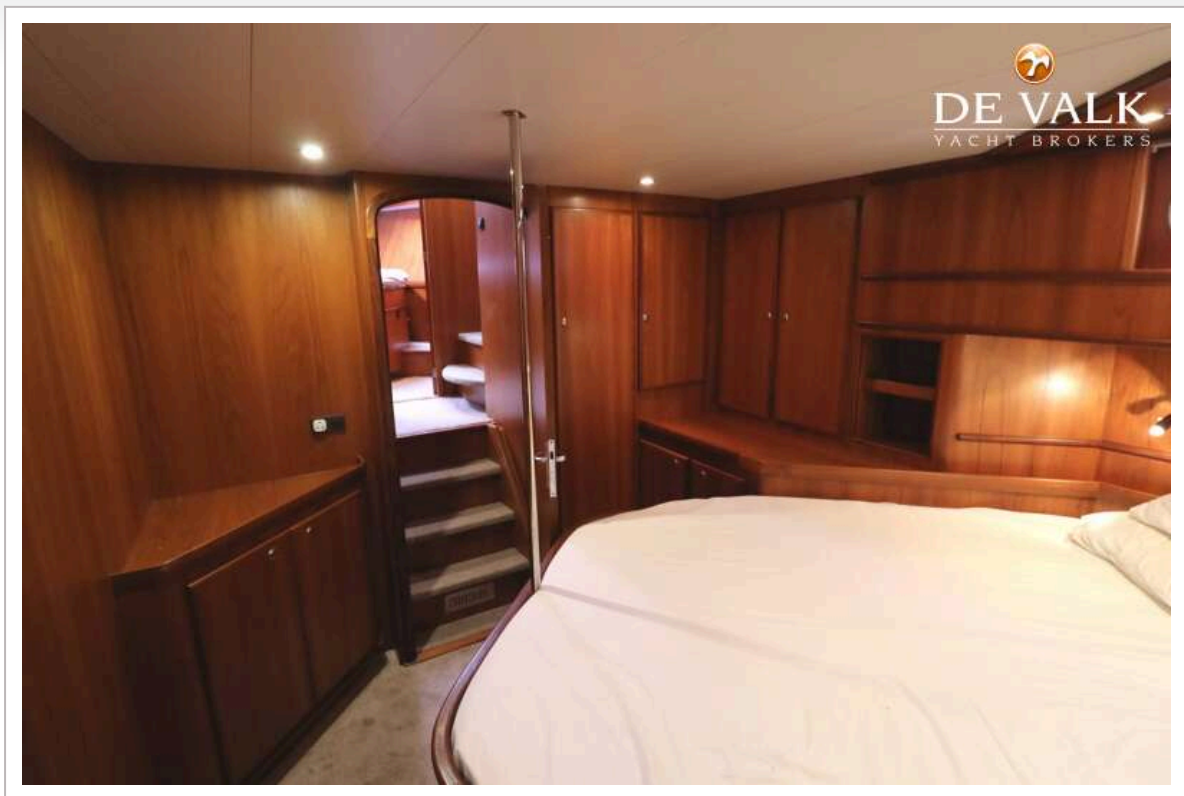
SEAROCCO 1500

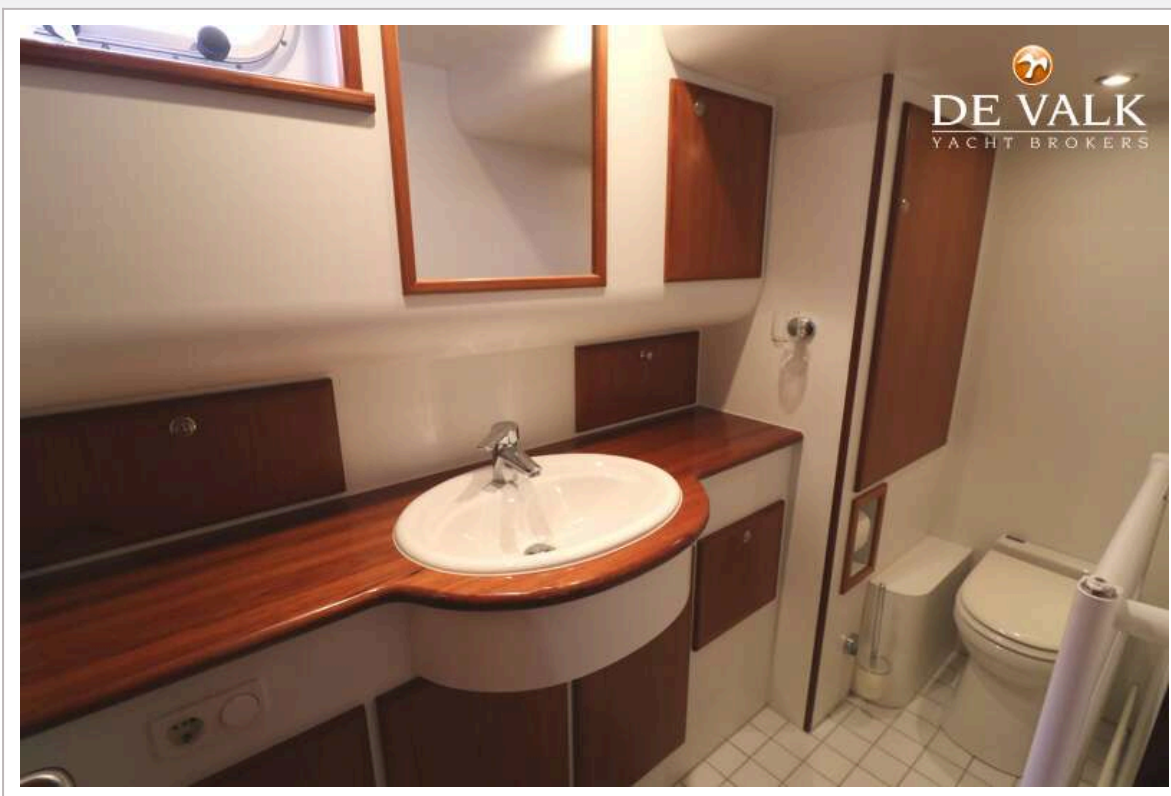


SEAROCCO 1500



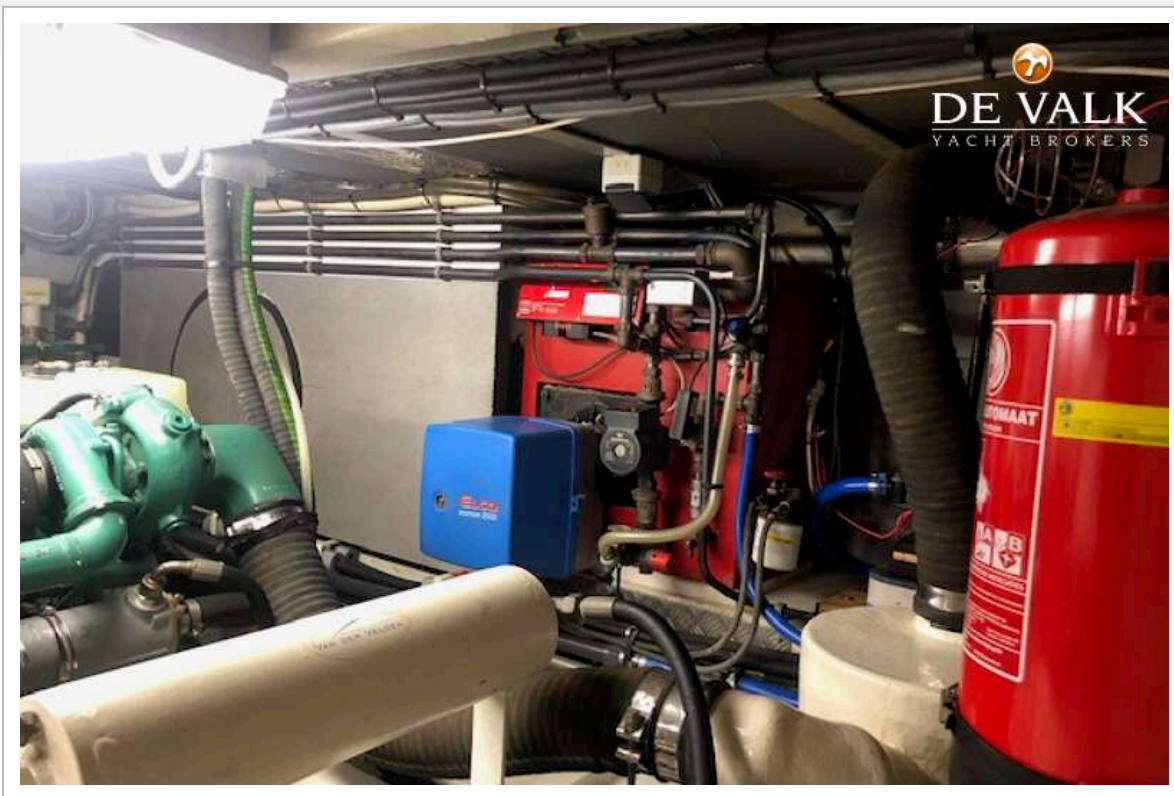






SEAROCCO 1500







Searocco 1500

