



DE VALK
YACHT BROKERS



PASSENGER VESSEL MINERVA



DE VALK
YACHT BROKERS

PASSENGER VESSEL MINERVA

BROKER'S COMMENTS

Minerva is a unique classic sailing vessel, fully EU licenced to carry up to 125 people. Its currently in use as a daytrip vessel throughout the EU and a welcome guest of honor in big events like: Route du Rum, Hamburg Hafengeburtstag, Kieler Woche, Hanse Sail Rostoc, Sail Great Yarmouth, Brest int. Maritime Festival, Sail Amsterdam, etc. Minerva can accomodate smaller groups in her cosy upstairs bar and can cater large groups or parties in our downstairs saloon. She is well insulated so loud parties are no disturbance for the surroundings. The fully equiped kitchen can cater anything.

Hans Visser

SPECIFICATIONS

Dimensions	49.00 x 7.00 x 2.00 (m)	Builder	Lühring Werf Brake
Built	1935	Cabins	
Material	Steel	Berths	
Engine(s)	1 x MAK MSU 36 diesel	Hp/Kw	180.00 (hp), 132.48 (kw)
Asking price	€ 1.500.000 (VAT Not paid)	Lying	elsewhere / Not at sales office

CONTACT

Sales office	De Valk Hindeloopen B.V.	Telephone	+31 514 52 40 00
Address	Oosterstrand 1 8713 JS Hindeloopen NL	E-mail	hindeloopen@devalk.nl

DISCLAIMER

These particulars are given in good faith as supplied but cannot be guaranteed.



PASSENGER VESSEL MINERVA

GENERAL

Model	PASSENGER VESSEL MINERVA
Type	sailing yacht
LOA (m)	49,00
Beam (m)	7,00
Draft (m)	2,00
Air draft (m)	32,50
Headroom (m)	2,10
Year built	1935
Builder	Lühring Werf Brake
Country	Germany
Designer	Lühring Werf Brake
Displacement (t)	202
Hull material	steel
Hull colour	white Jotun Paint system
Hull thickness (mm)	last thickness measurement 2022
Hull shape	round-bilged
Superstructure material	steel
Deck material	steel
Deck finish	paint Jotun Paint system
Superstructure deck finish	paint Jotun Paint system
Fuel tank (litre)	13.000 ltr.
Fuel tank 2 (litre)	steel 2 x 6000 ltr. 1 x 1000 ltr. for generator
Level indicator (fuel tank)	yes
Fuel daytank (litre)	steel 200 ltr. automatically filled
Freshwater tank (litre)	steel 15.000 ltr. 1 tank cleaned 2023
Level indicator (freshwater)	yes
Blackwater tank (litre)	steel 700 ltr. tank to 2500 ltr. tank
Blackwater tank extraction	deck extraction + pump With Sewage Hamann system
Wheel steering	mechanical
Extra info	The ship is well prepared for the future and different uses.



PASSENGER VESSEL MINERVA

Extra info

Certificates visible for my account users

ACCOMMODATION

Crew cabin	3 cabins and one bathroom
Crew berths	6 x 2 Pers plus captain
Interior	mahogany Fireproof panneling
Pilot house	yes
Saloon	Dining room, meeting room, party room, etc.
Headroom saloon (m)	2,30 mtr.
Heating	central heating Marine Booster
Galley	With profesional equipment
Countertop	stainless steel
Sink	stainless steel Double
Cooker	calor gas 4 burner Plus 3 plates and 1 grill
Oven	electric combi steamer UNOX ChefTop
Microwave	yes
Fridge	2 x Maxxfrost (can also freeze)
Freezer	3 freezers
Hot water system	Boiler and marine booster
Water pressure system	yes
Dishwasher	Elite 55
Kettle	yes
Ice maker	MaxxFrost
Coffee maker	1x WMF Filterjet (+ one spare) + DeLonghi Magnifica
Crockery	yes
Toilet	Two for women and two for men
Toilet system	Freshwater auto
Wash basin	yes
Washing machine	yes
Dryer	yes
Extra info	2x Gamko beer tap installation with cooling



PASSENGER VESSEL MINERVA

Extra info

Different layouts or modular cabins can easily installed.

MACHINERY

No of engines	1
Make	MAK
Type	MSU 36
HP	180
kW	132.48
Fuel	diesel
Year installed	1951
Maximum speed (kn)	7,5
Engine cooling system	seawater
Drive	shaft
Engine controls	mechanical
Bowthruster	hydraulic Maas Thruster
Propeller type	fixed
Propeller blades	3
Propeller shaft material	steel
Electric bilge pump	System wiyth 2 spare pumps
Bilge alarm	yes
Electrical installation	380/220 AC & 12/24 DC
Generator	2x 60 Kva
Batteries	4x 160 Amp
Battery charger	1 x 24-100 & 1 x 24-40 & 1 x 12-35 & 1x24-16 & 1 x 12-35
Shorepower	with cable 380V - 32a
Extra info	2x Compressors

NAVIGATION

Compass	Magnetic steering
Electric compass	JRC
VHF	Sailor RT4822 DSC& Icom IC-GM651 DSC



PASSENGER VESSEL MINERVA

VHF handheld	2 x GMDSS portos and 5 x crew portos
Radar	Furuno
GPS	Furuno GP-32 & Simrad GN70 & 1 x JRC
Radar/GPS/plotter	Simrad
Weather receiver	Furuno NX-500
Navtex	NAv 5 GMDSS
Personal computer	yes
Wifi antenna	yes
AIS transceiver	Furuno GA-150
EPIRB	yes
Extra info	SART

EQUIPMENT

Sun awning	yes
Cockpit cushions	yes
Cockpit table	yes
Gangway	1 large and 1 small
Anchor	yes
Anchor chain	yes
Anchor 2	yes
Anchor chain	yes
Windlass	hydraulic major maintenance 2022
Davits	yes
Davits controls	manual
Sea railing	steel
Railing side opening gates	yes
Life raft	container 7
Lifejackets	138 + 13 for child
Lifebuoy	3
Horn	yes
Binocular	yes



PASSENGER VESSEL MINERVA

Fenders	yes
Mooring lines	yes
Spare parts	yes
Tools	yes
Radio	Audio installation
Cockpit speakers	2x Bose 402 speakers outside
Fire extinguisher	Distributed throughout the ship
Auto extinguisher system	2x Novec
Extra info	1x Sart (search and rescue transponder) 5x professional portofoons
Extra info	Passenger ship safety certificate
Extra info	Certificate Seaworthiness

RIGGING

Standing rigging	wire New 2022
Material mast	3 masts made from steel
Keel stepped mast	yes
Mainsail	3x
Mainsail cover	New 2023
Jib	3x
Reefing System	slabreefing



PASSENGER VESSEL MINERVA



PASSENGER VESSEL MINERVA



PASSENGER VESSEL MINERVA



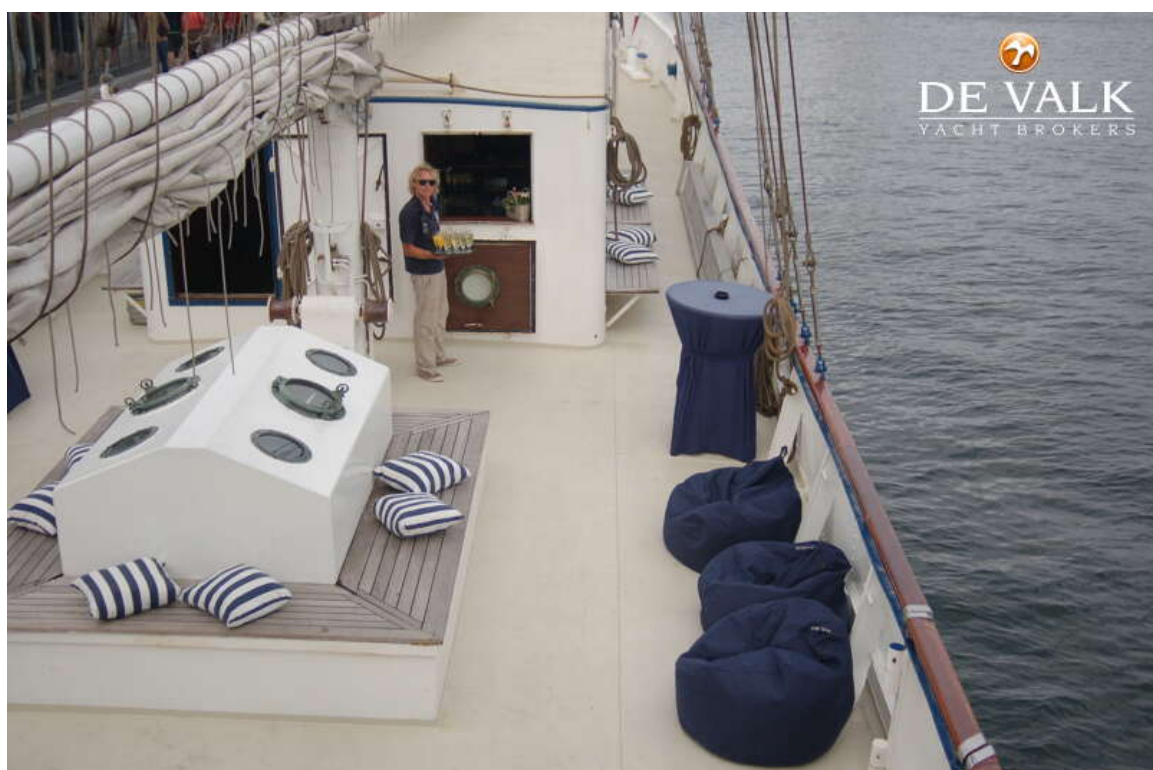
PASSENGER VESSEL MINERVA



PASSENGER VESSEL MINERVA



PASSENGER VESSEL MINERVA



PASSENGER VESSEL MINERVA



PASSENGER VESSEL MINERVA



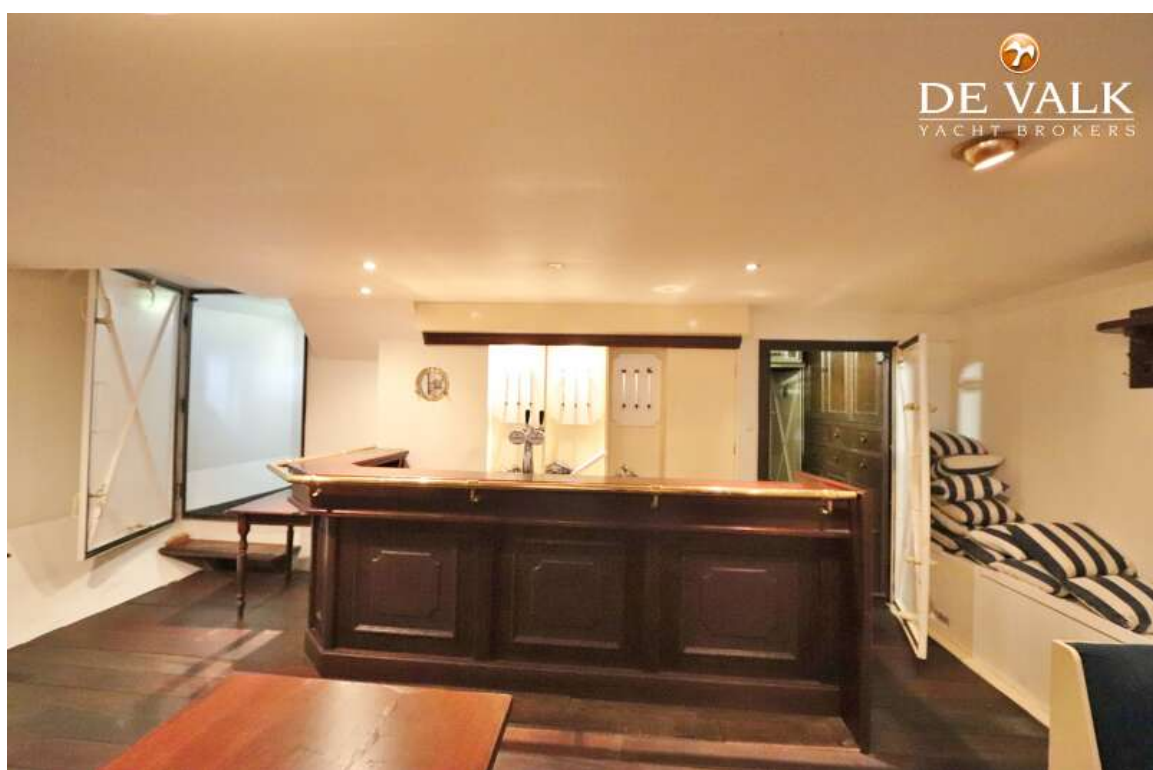
PASSENGER VESSEL MINERVA



PASSENGER VESSEL MINERVA



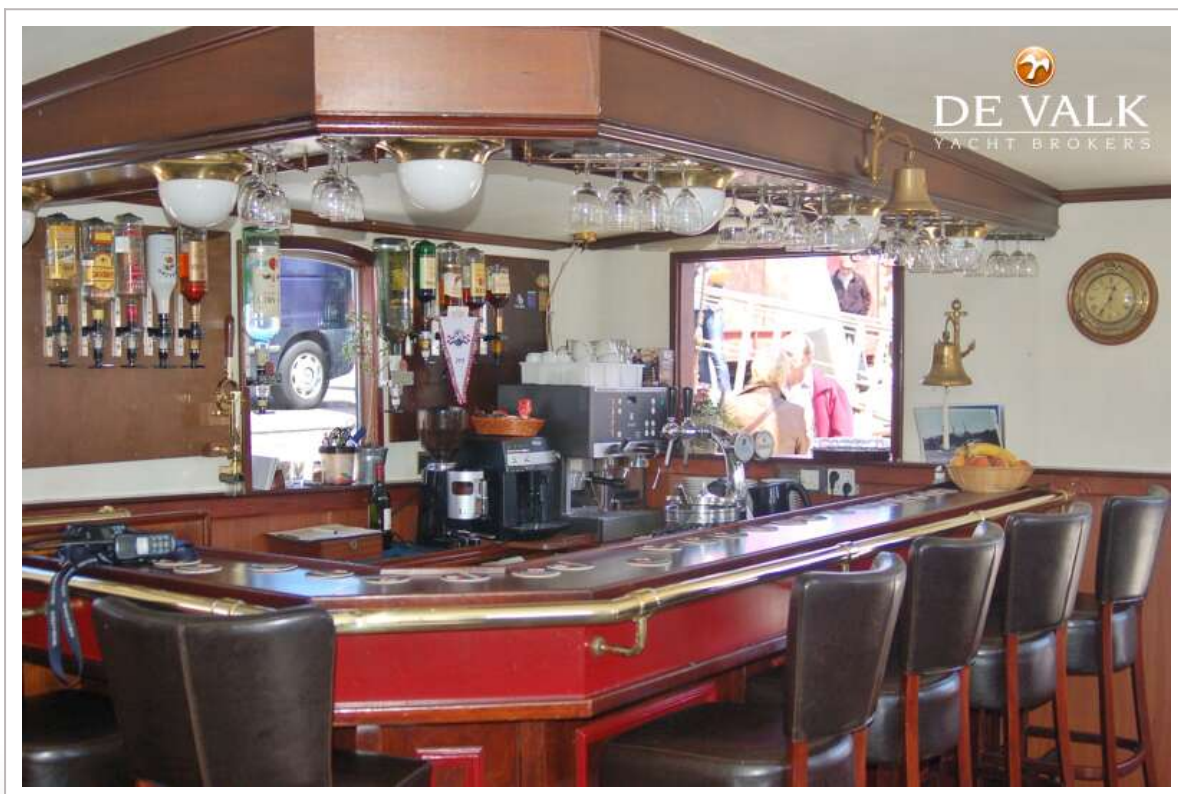
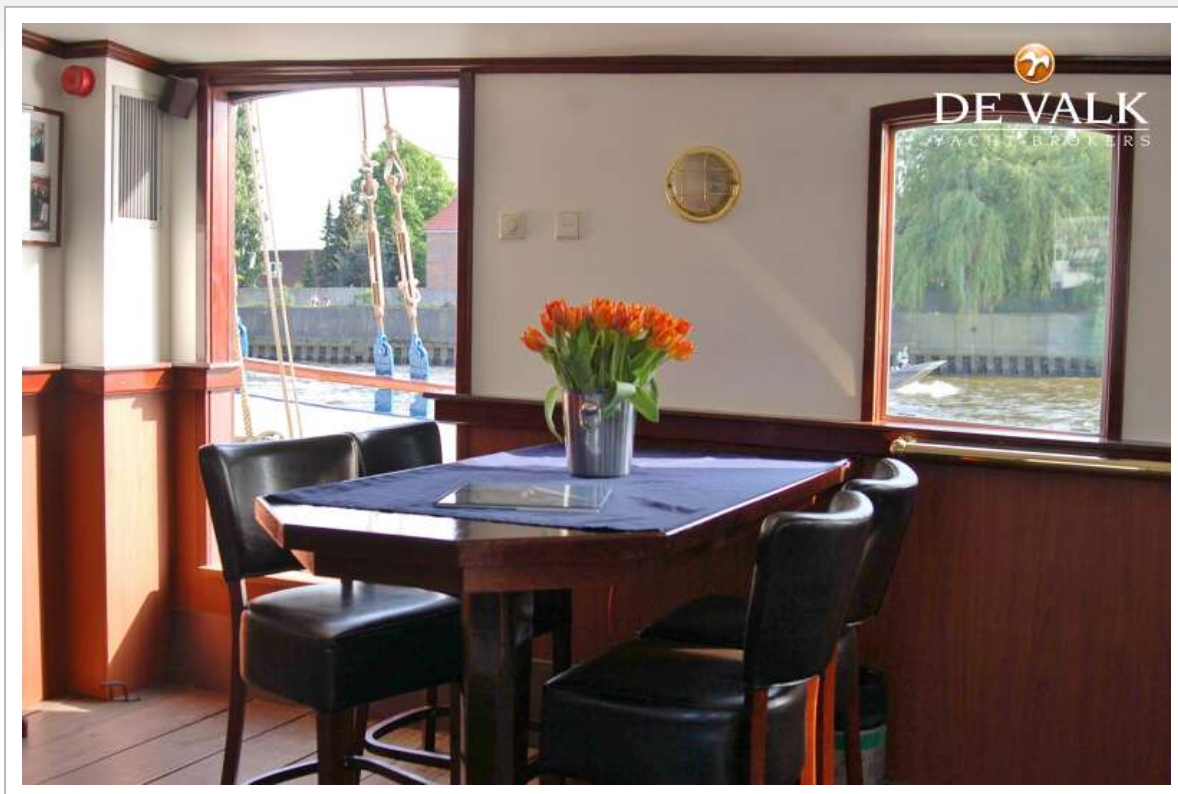
PASSENGER VESSEL MINERVA



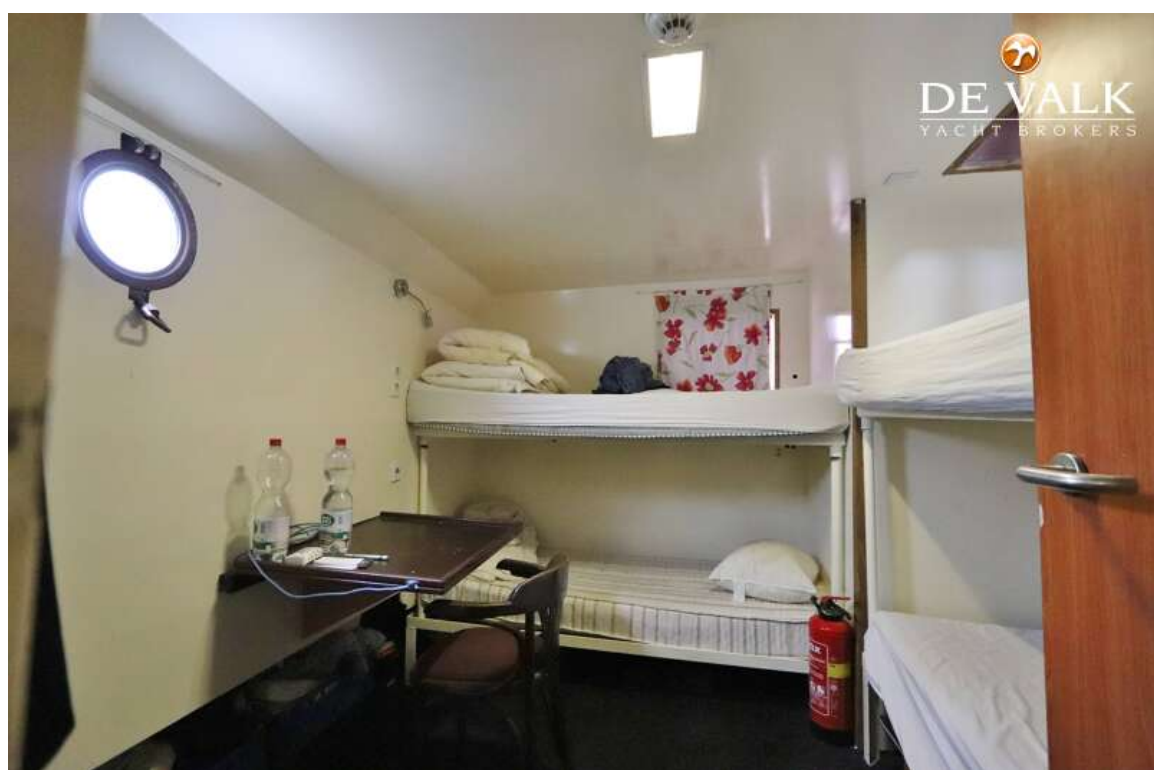
PASSENGER VESSEL MINERVA



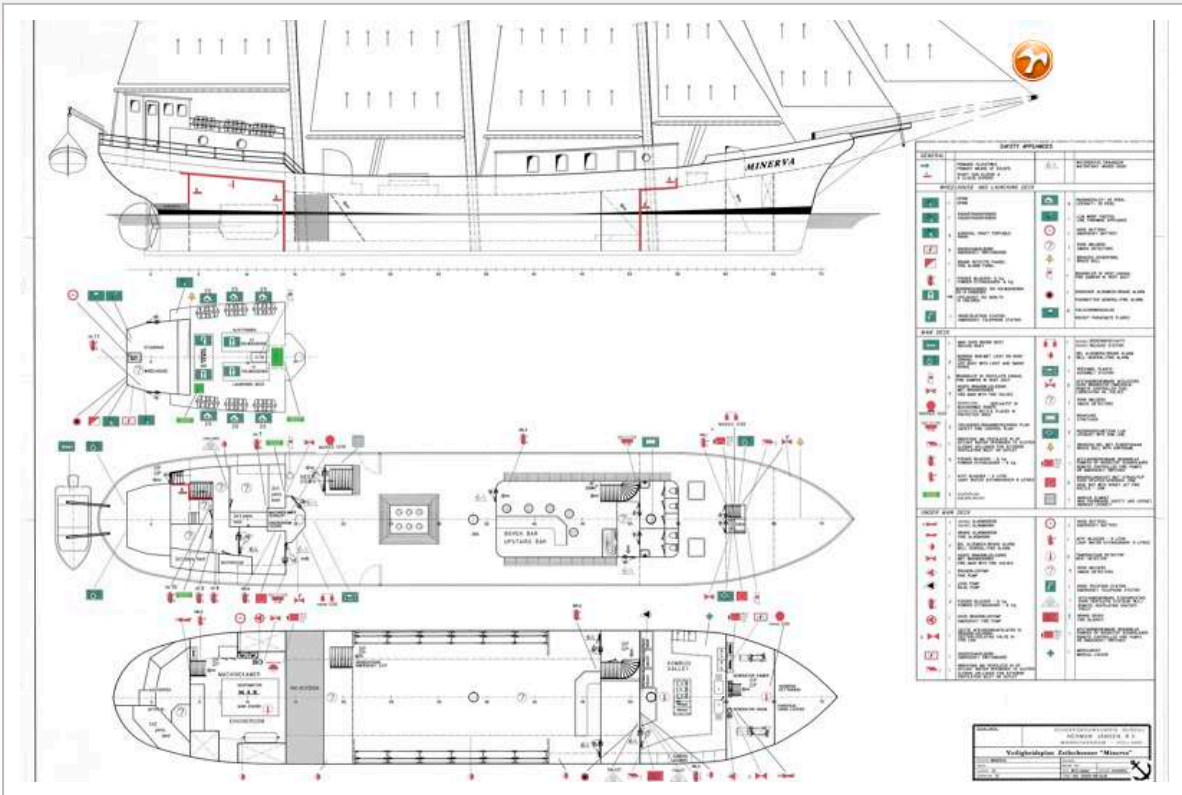
PASSENGER VESSEL MINERVA



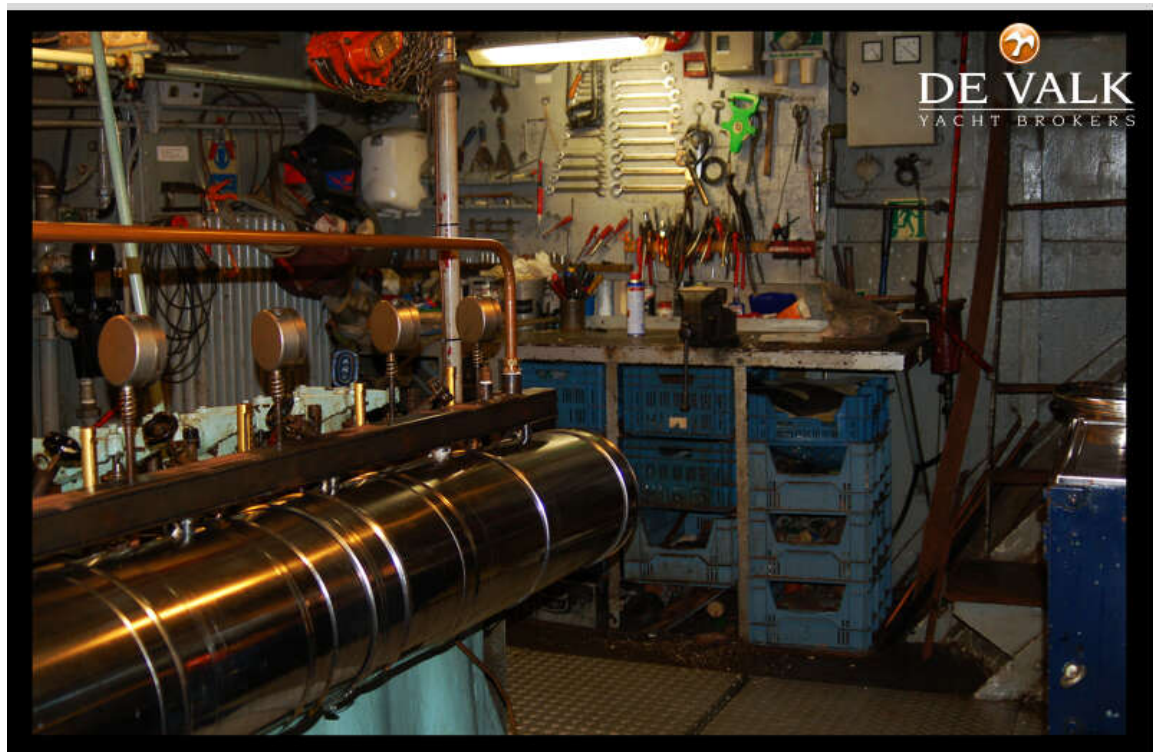
PASSENGER VESSEL MINERVA



PASSENGER VESSEL MINERVA



PASSENGER VESSEL MINERVA



PASSENGER VESSEL MINERVA

