



## REINKE 11S EX

# REINKE 11S EX

## BROKER'S COMMENTS

The Reinke 11S with her unique designed hull is very robust built with marine grade alloy for the sides and 8mm for the bottom. A very strong yacht, built according to German standards. Strong but light weight and low maintenance. Fully blue water capable. The interior is built around a Deck Salon, allowing an unhindered view outside while sitting and providing an unusual amount of storage space. A comfortable and safe cruising yacht, ready to go.

*Jörg Hellmich*

## SPECIFICATIONS

<b>Dimensions</b>	11.67 x 3.46 x 1.65 (m)	<b>Builder</b>	Yachtwerft Benjamins GmbH
<b>Built</b>	1996	<b>Cabins</b>	2
<b>Material</b>	Aluminium	<b>Berths</b>	4
<b>Engine(s)</b>	1 x Mercedes OM616 diesel	<b>Hp/Kw</b>	63.00 (hp), 46.37 (kw)
<b>Asking price</b>	sold (VAT )	<b>Lying</b>	at sales office

## CONTACT

<b>Sales office</b>	De Valk Almeria	<b>Telephone</b>	+34 950 497 825
<b>Address</b>	Puerto de Almerimar Darsena de la Batea Almerimar ES	<b>E-mail</b>	almeria@devalk.nl

## DISCLAIMER

These particulars are given in good faith as supplied but cannot be guaranteed.



## GENERAL

Model	REINKE 11S EX
Type	sailing yacht
LOA (m)	11,67
LWL (m)	9,95
Beam (m)	3,46
Draft (m)	1,65
Air draft (m)	15,00
Headroom (m)	1,90
Year built	1996
Launched	1997
Builder	Yachtwerft Benjamins GmbH
Country	Germany
Designer	Reinke
Displacement (t)	9,7
Ballast (tonnes)	lead in aluminum 3,2
Gross tonnage	11
CE norm	NA
Hull material	aluminium
Hull colour	white
Hull thickness (mm)	6 / 7/ 8 mm (5 mm above water)
Hull shape	multi hard chine
Keel type	fin keel
Superstructure material	aluminium
Superstructure (mm)	5
Deck plate thickness (mm)	5
Rubbing strake	aluminum
Deck material	aluminium
Deck finish	Treadmaster And antislip paint
Superstructure deck finish	Treadmaster And antislip paint
Cockpit deck finish	teak



<b>Dorades</b>	2 units
<b>Window frame</b>	aluminium
<b>Window material</b>	perspex
<b>Deckhatch</b>	yes
<b>Portholes</b>	yes
<b>Insulation</b>	foam plates 5 cm above waterline
<b>Radar arch</b>	non collapsible Pole
<b>Fuel tank (litre)</b>	aluminium 600 in 2 tanks
<b>Level indicator (fuel tank)</b>	Gauge
<b>Freshwater tank (litre)</b>	aluminium 750 in 2 tanks
<b>Level indicator (freshwater)</b>	Gauge
<b>Blackwater tank (litre)</b>	aluminium 120
<b>Wheel steering</b>	hydraulic
<b>Outside helm position</b>	hydraulic
<b>Emergency tiller</b>	yes
<b>More info on hull</b>	In good condition
<b>More info on paintwork</b>	In fair conditions

## ACCOMMODATION

<b>Cabins</b>	2
<b>Berths</b>	4
<b>Interior</b>	mahogany
<b>Layout</b>	yes
<b>Floor</b>	teak
<b>Deck saloon</b>	yes
<b>Saloon</b>	yes
<b>Headroom saloon (m)</b>	1,90
<b>Chart table</b>	yes
<b>Aft Cabin</b>	L-shape berth
<b>Convertible berth</b>	In saloon
<b>Galley</b>	Long galley



# REINKE 11S EX

Countertop	Wood
Sink	stainless steel Double
Cooker	calor gas 4 burner
Oven	yes
Fridge	40 Ltr
Freezer	40 Ltr
Hot water system	220V + engine Boiler
Water pressure system	electrical
Crockery	yes
Owners cabin	double bed Forward
Bed length (m)	1,90 x 2,00
Wardrobe	hanging and shelves
Toilet	shared
Toilet system	manual
Wash basin	at the toilet
Shower	shared
Bath tub	yes
Guest cabin 1	single bed Aft
Bed length (m)	1,90 x 0,80
Wardrobe	hanging and shelves
Bathroom	shared Sink
Toilet	shared
Toilet system	manual Lavac System
Wash basin	in the cabin
Shower	shared

## MACHINERY

No of engines	1
Make	Mercedes
Type	OM616
HP	63



<b>kW</b>	46.37
<b>Fuel</b>	diesel
<b>Year installed</b>	1996
<b>Maximum speed (kn)</b>	7,9 @ 3,300 rpm
<b>Cruising speed (kn)</b>	5 @ 1.800 rpm
<b>Consumption (l/hr)</b>	5,5
<b>Range (nm)</b>	540
<b>Engine hours</b>	3700
<b>Engine cooling system</b>	freshwater heat exchanger Bowmann
<b>Drive</b>	shaft
<b>Shaft seal</b>	Changed in 2016
<b>Engine controls</b>	bowden cable
<b>Gearbox</b>	hydraulic
<b>Gearbox</b>	hydraulic Hurt HBW 250-2
<b>Exhaust</b>	watercooled
<b>Propeller type</b>	feathering Prowell Sail-Prop
<b>Propeller blades</b>	3
<b>Propeller shaft material</b>	stainless steel
<b>Shaft lubrication</b>	grease
<b>Manual bilge pump</b>	yes
<b>Electric bilge pump</b>	yes
<b>Start battery</b>	1 x 12V / 80 Amp Gel (2021)
<b>Service battery</b>	2 x 12V / 200 Amp AGM (2022)
<b>Battery charger</b>	Quick Rev 002
<b>Inverter</b>	Waco Sine Power 412 (350W)
<b>Wind generator</b>	Airmarine 403
<b>Solar panel</b>	Siemens M-55
<b>Shorepower</b>	with cable 230V

## NAVIGATION

<b>Compass</b>	Fluxgate
----------------	----------



Electric compass	Autohelm ST50
Multi control display	Autohelm ST50
Depth sounder	VDO Compact II
Depth sounder/log	Autohelm ST50
Windset	Autohelm ST50
VHF	M-tech MT500
VHF handheld	Icom IC-OM
Autopilot	Autohelm ST4000 T
Wind vane steering install.	Windpilot Pacific
Rudder angle indicator	Autohelm ST50
Radar	Raytheon R-20-XX
GPS	Raytheon Nav-398 + Garmin GPS-48
Navigation lights	yes

## EQUIPMENT

Fixed windscreen	yes
Sprayhood with grab rail	yes
Bimini	yes
Cockpit cushions	yes
Cockpit table	yes
Bathing platform	Yes
Boarding ladder	stainless steel
Anchor	Rocna 25,5 kg
Anchor chain	V4A 70m (8mm)
Anchor 2	Fortress FX 37 (9,5kg)
Anchor chain	V4A 15m (8mm)
Windlass	Lofrans Tiger 1200W
Dinghy	rigid inflatable
Outboard	Mercury 9,9 HP
Outboard support	yes
Sea railing	wire



Grab rail (superstructure)	aluminium
Pushpit	yes
Lifejackets	yes
Lifebuoy	Life-Sling
Clearview window	yes
Fenders	yes
Mooring lines	yes
Spare parts	yes
Tools	yes
Clock - barometer	yes
Fire extinguisher	2 units
Extra info	CQR Anchor 27kg with V4A 20m (8mm) chain

## RIGGING

Rigging	sloop-cutter Original
Standing rigging	wire
Brand mast	Seldén With mast steps
Material mast	aluminium
Spreaders	1 set
Battcars	yes
Fully battened mainsail	With 3 reefs (1997)
Genoa III	30m <sup>2</sup> (1997)
Genoa furler	Harken
Gennaker	2 sails (50m <sup>2</sup> each)
Stormjib	9 m <sup>2</sup>
Reefing System	slabreefing
Boomvang	tackle
Primary sheet winch	2 x Andersen 52" ST 2 SP
Secondary sheet winch	3 x Andersen 28" ST 2 SP
Winchcovers	yes
Spi-pole	aluminium 2 poles on mast



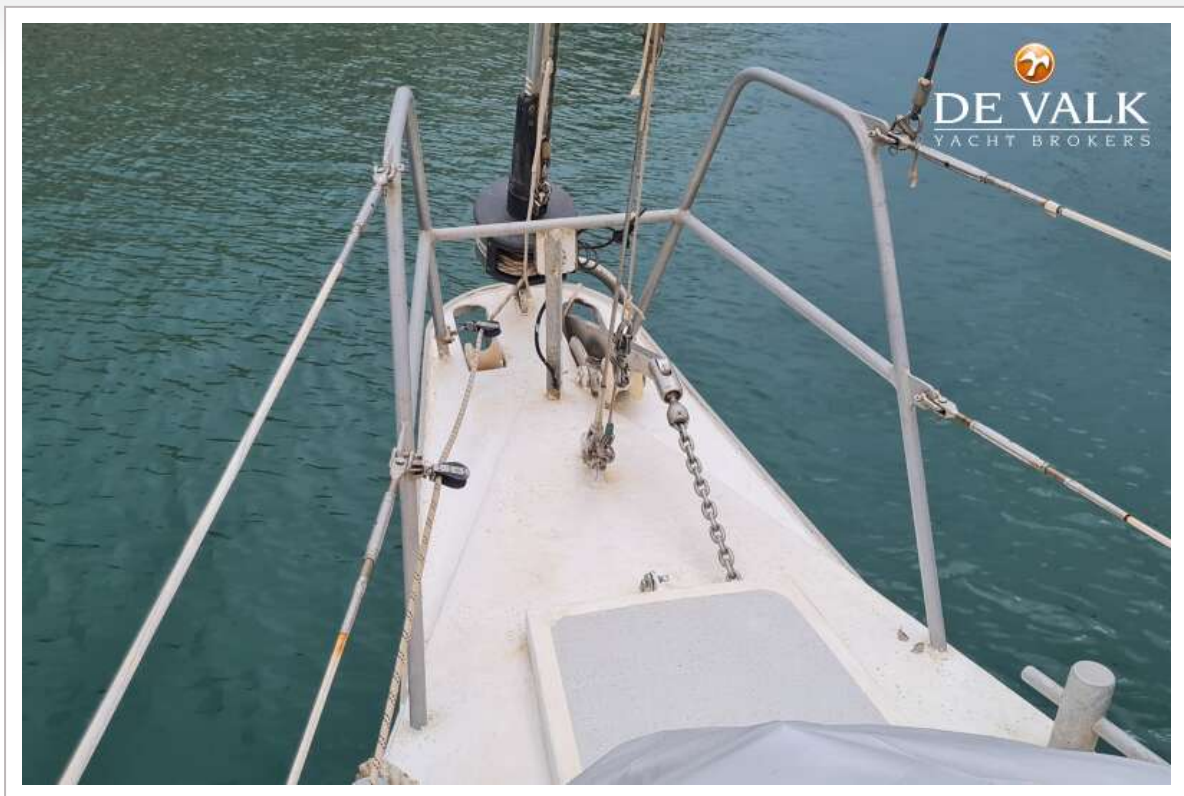




# REINKE 11S EX



# REINKE 11S EX





# REINKE 11S EX

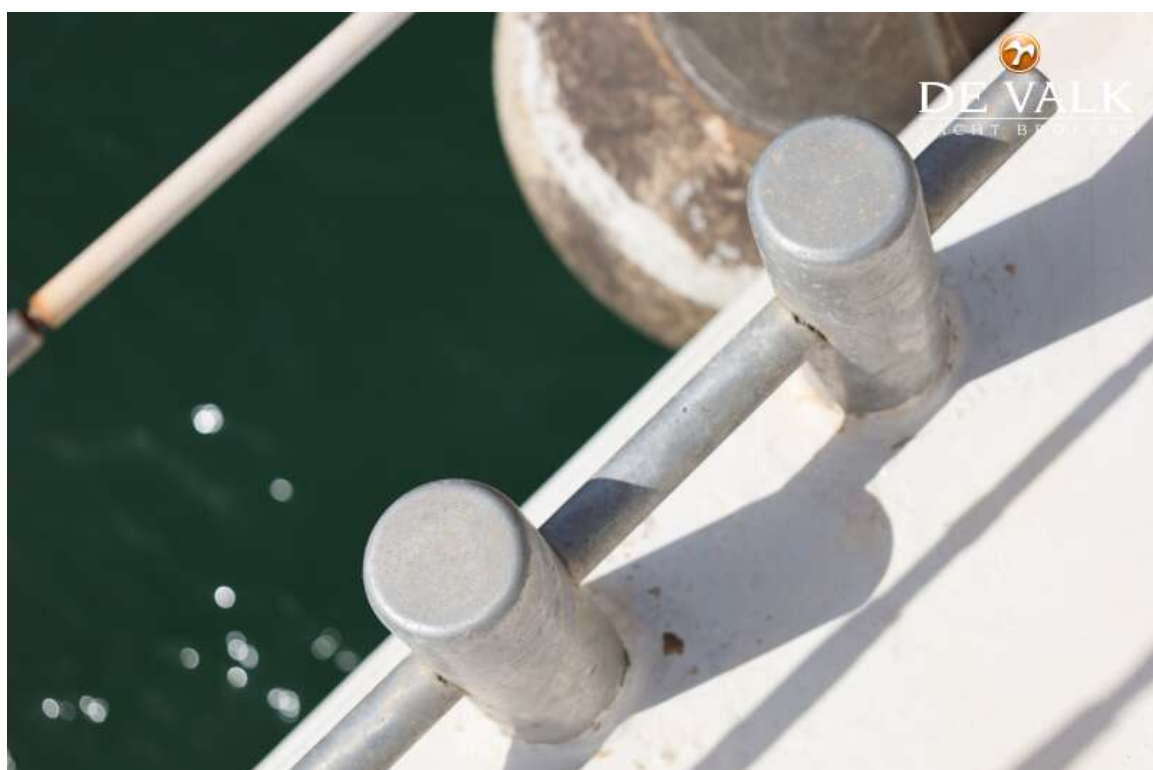


# REINKE 11S EX





# REINKE 11S EX

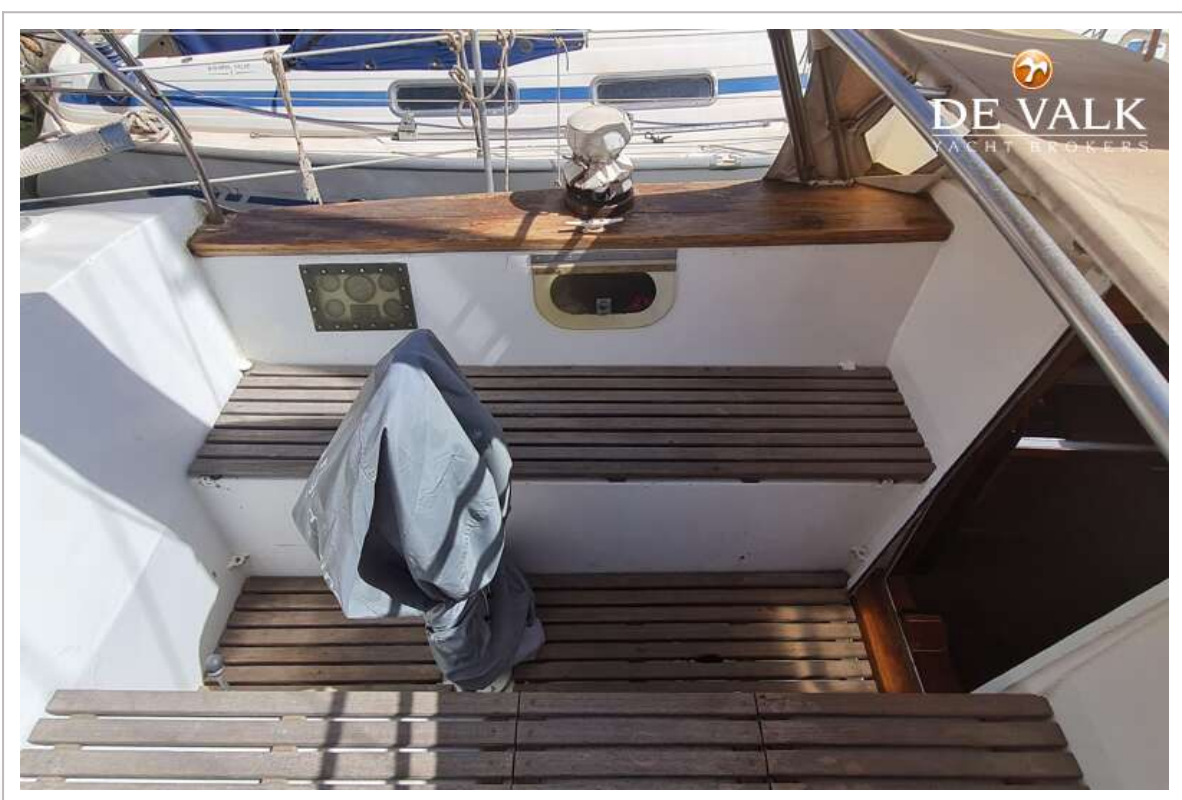
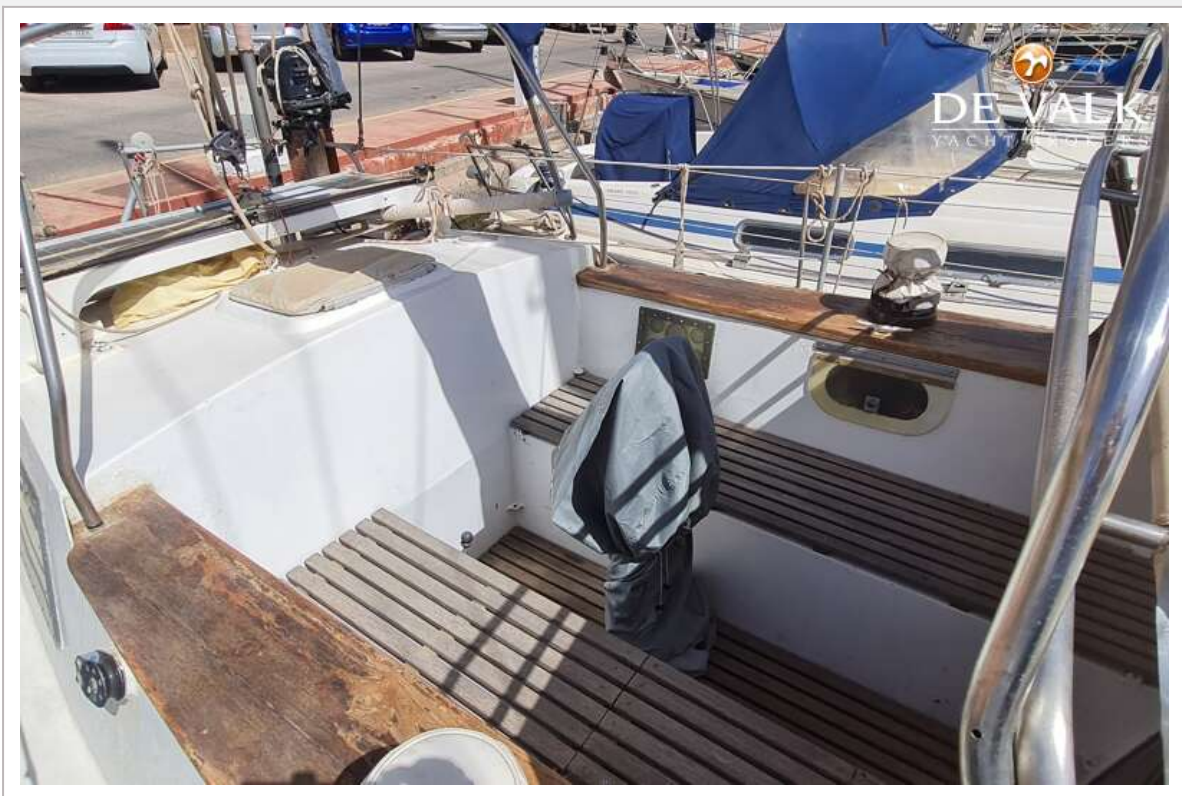


# REINKE 11S EX





# REINKE 11S EX





# REINKE 11S EX

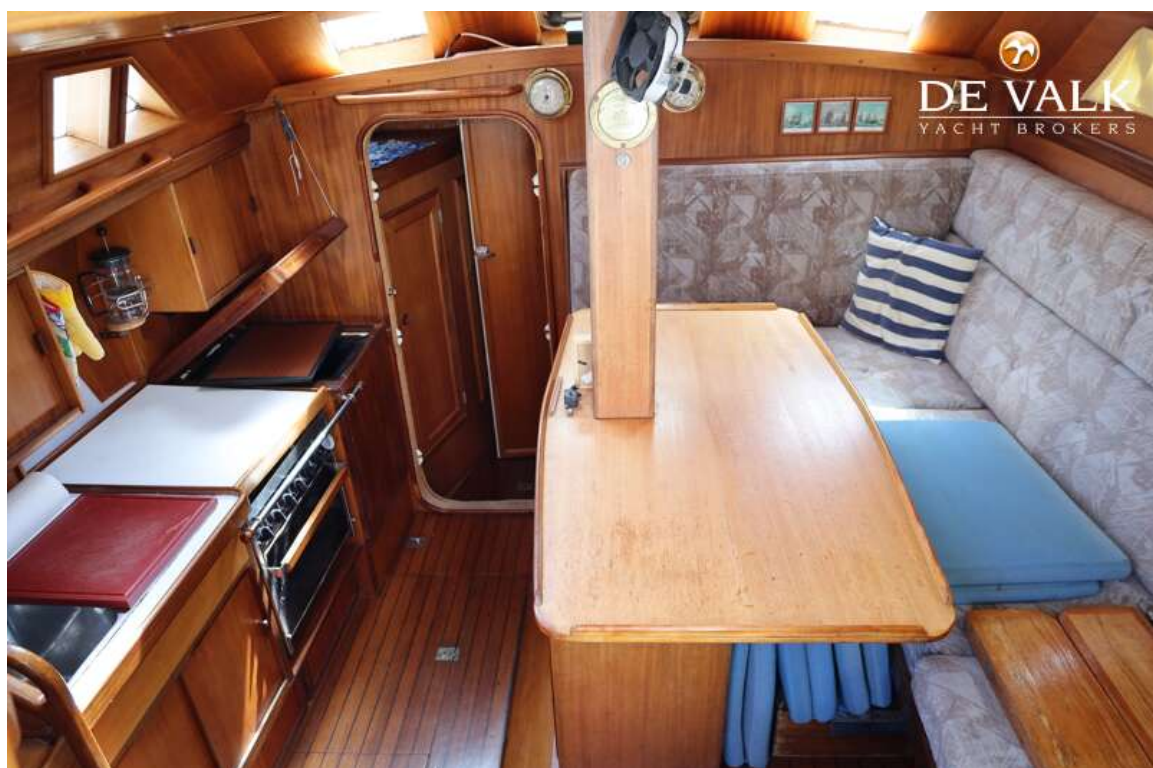


# REINKE 11S EX





# REINKE 11S EX

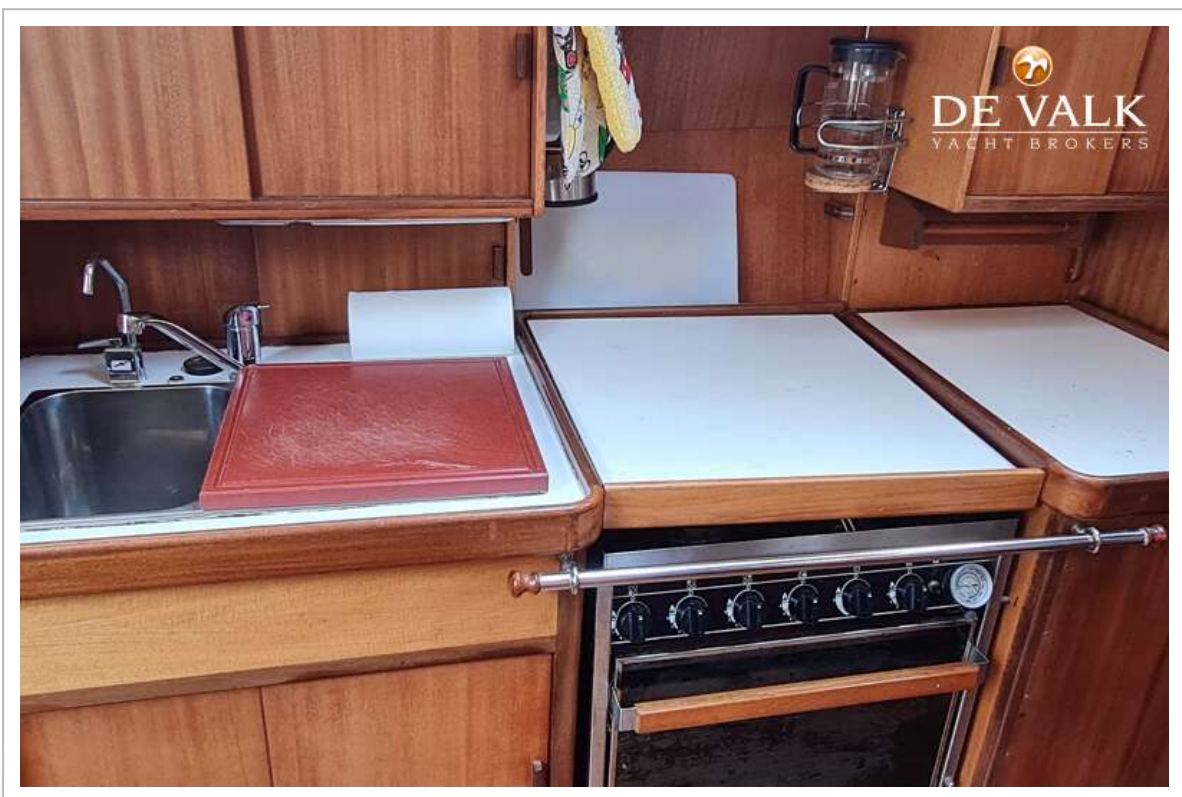
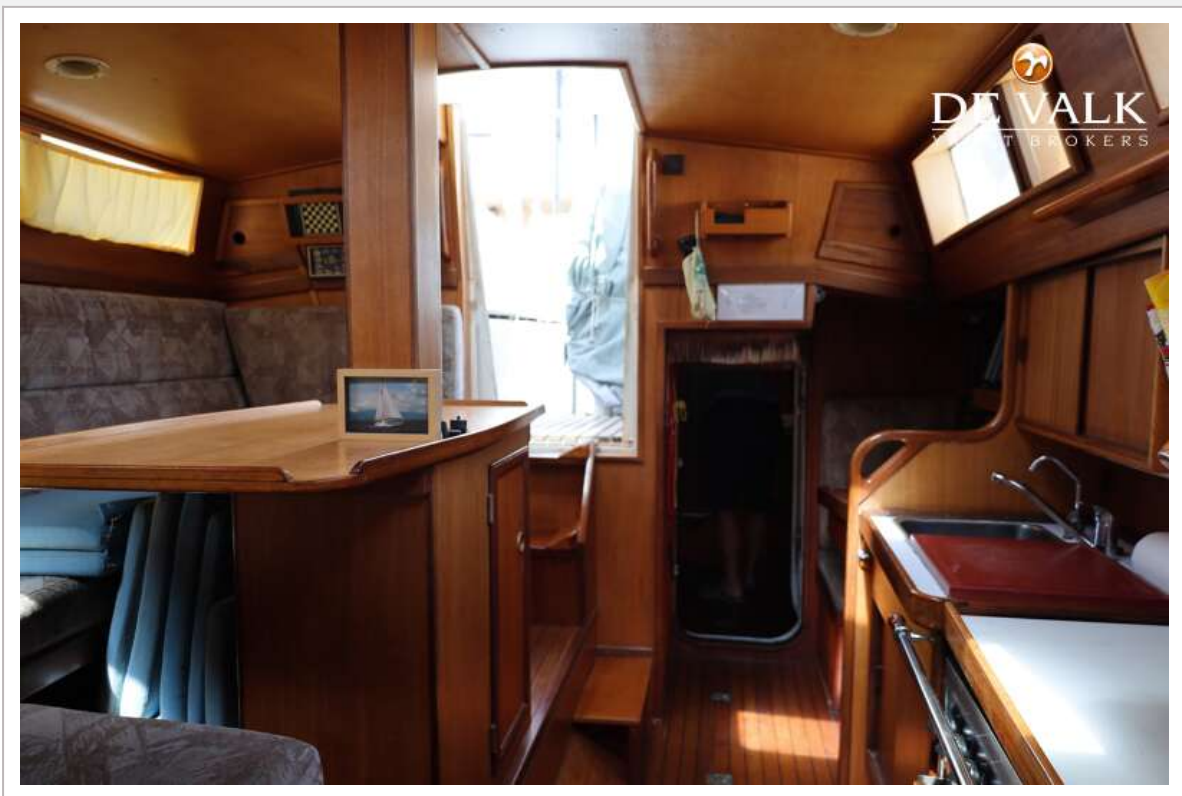


# REINKE 11S EX





# REINKE 11S EX

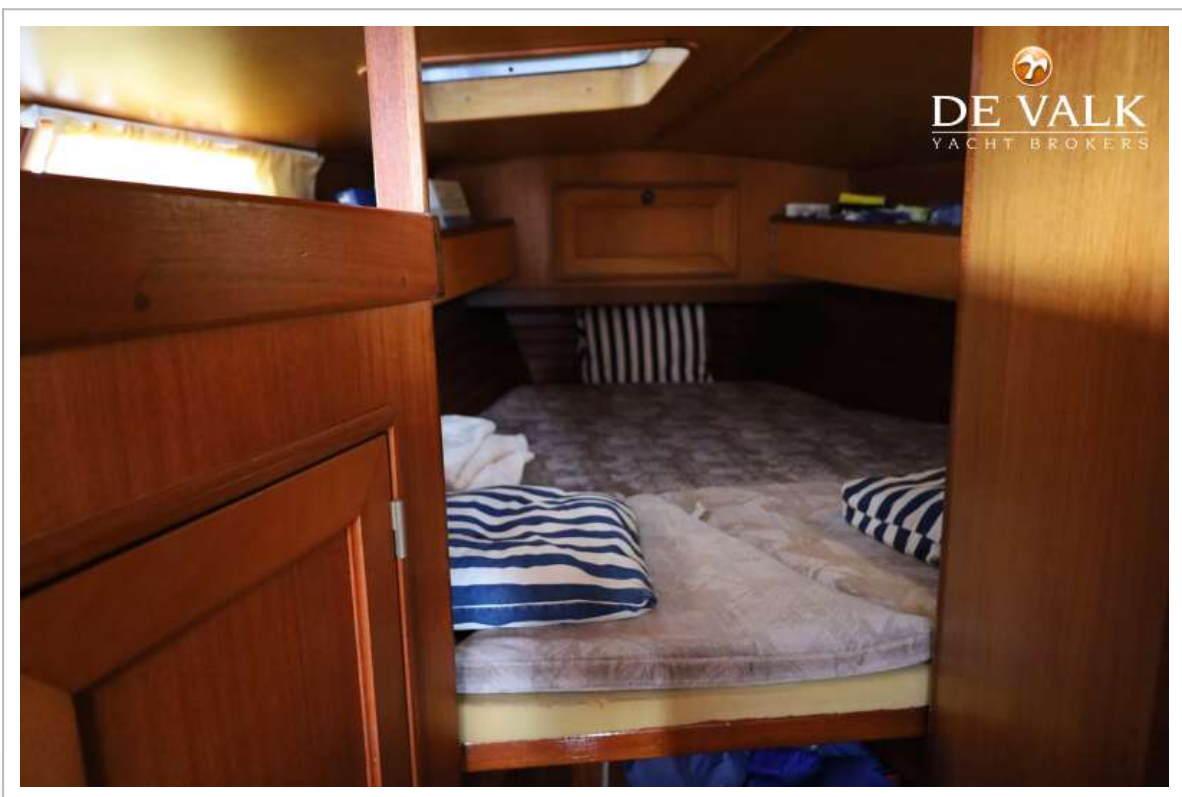


# REINKE 11S EX





# REINKE 11S EX

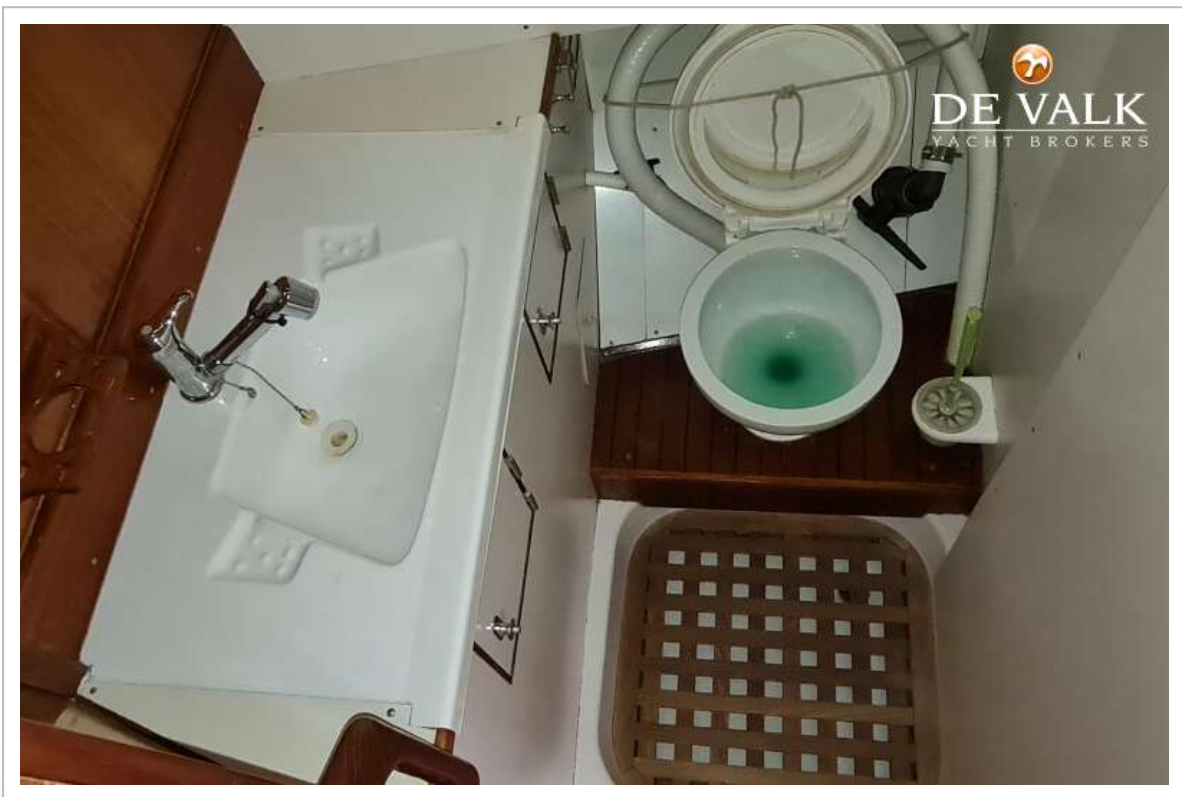


# REINKE 11S EX





# REINKE 11S EX

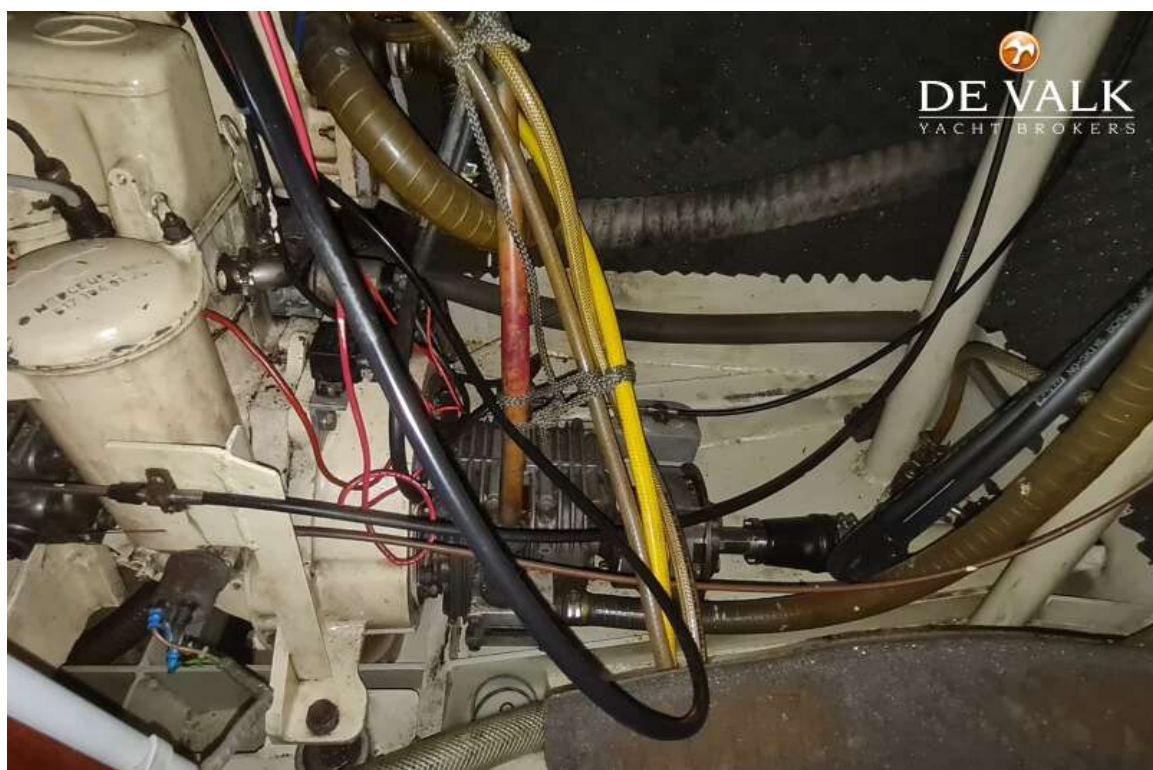
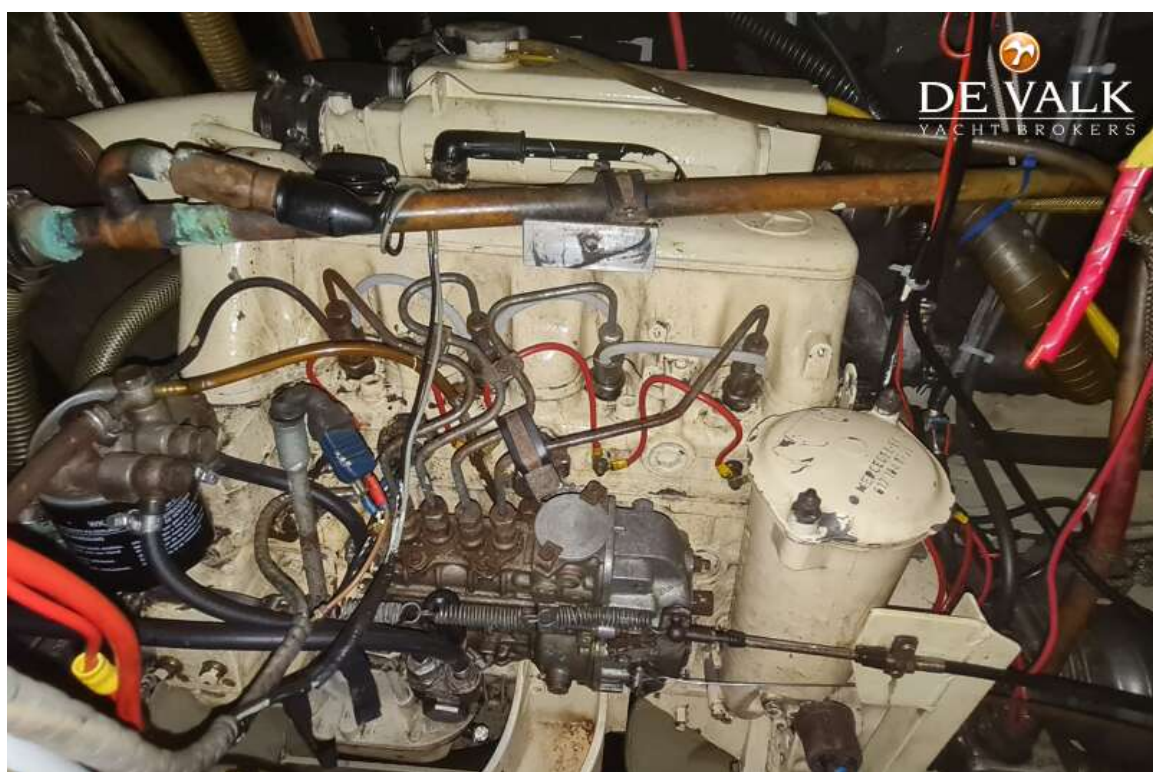


## REINKE 11S EX





# REINKE 11S EX



# REINKE 11S EX

