



HALLBERG RASSY 352 SCANDINAVIA



HALLBERG RASSY 352 SCANDINAVIA

BROKER'S COMMENTS

Does a Hallberg-Rassy 352 Scandinavia needs further introduction? Seasoned sailors know what the capabilities are and the comfort they offer. Stella Maris is maintained very well what shows when stepping on board. Current owner is strict regarding maintenance and upgrades, such as yearly engine service and anti fouling, recent heating system, water pressure and toilet system and very recent navigation electronics. Stored on the hard every winter and she spent most of her life on fresh water. Located near our sales office, viewing possible by appointment.

Harald Padberg

SPECIFICATIONS

Dimensions	10.54 x 3.38 x 1.67 (m)	Builder	Hallberg Rassy Varvs AB, Ellos
Built	1989	Cabins	2
Material	GRP	Berths	6
Engine(s)	1 x Volvo Penta MD 22 A diesel	Hp/Kw	59.00 (hp), 43.42 (kw)
Asking price	sold (VAT)	Lying	elsewhere / Not at sales office

CONTACT

Sales office	De Valk Monnickendam B.V.	Telephone	+31 (0)299 65 63 50
Address	Hoogedijk 6 1145 PM Katwoude NL	E-mail	monnickendam@devalk.nl

DISCLAIMER

These particulars are given in good faith as supplied but cannot be guaranteed.



HALLBERG RASSY 352 SCANDINAVIA

GENERAL

Model	HALLBERG RASSY 352 SCANDINAVIA
Type	sailing yacht
LOA (m)	10,54
LWL (m)	8,70
Beam (m)	3,38
Draft (m)	1,67
Air draft (m)	16,00
Headroom (m)	1,89
Year built	1989
Launched	1989
Builder	Hallberg Rassy Varvs AB, Ellos
Country	Sweden
Designer	Christoph Rassy & Olle Enderlein
Displacement (t)	6,7
Ballast (tonnes)	cast iron 3 t.
Hull material	GRP
Hull colour	off-white
Hull shape	round-bilged
Keel type	long keel
Superstructure material	GRP
Superstructure (mm)	Sandwich 25 mm.
Deck plate thickness (mm)	Sandwich 25 mm.
Rubbing strake	steel
Deck material	GRP
Deck finish	teak
Superstructure deck finish	non-skid moulded in
Cockpit deck finish	teak
Antifouling (year)	New / nieuw / Neu 2022
Dorades	3 X
Window frame	aluminium



HALLBERG RASSY 352 SCANDINAVIA

Window material	Acryl
Deckhatch	4 X
Portholes	aluminium
Insulation	yes
Fuel tank (litre)	stainless steel 150 L.
Fuel tank 2 (litre)	stainless steel 90 L.
Level indicator (fuel tank)	yes
Freshwater tank (litre)	polyethylene 300 L.
Blackwater tank (litre)	No / nee / Nein
Greywater tank (litre)	No / nee / Nein
Wheel steering	chain steering
Emergency tiller	yes
More info on hull	In 2015 the hull below the waterline was stripped down, sanded and coated with 4 layers of epoxy plus 2 layers of antifouling. The portholes were dismantled, cleaned and reinstalled at the same time.
Extra info	Fuel tank is cleaned in 2017.
Extra info	Freshwater tank indicator need to be checked.

ACCOMMODATION

Cabins	2
Berths	6
Interior	mahogany
Floor	teak and holly + carpet / tapijt / Teppich - new / nieuw / Neu 2012
Open cockpit	yes
Saloon	yes
Headroom saloon (m)	1,89 m.
Heating	Webasto EVO 40 - new / nieuw / Neu 2019
Chart table	yes
Aft Cabin	yes
Galley	yes



HALLBERG RASSY 352 SCANDINAVIA

Countertop	wood
Sink	stainless steel - 2 X
Cooker	calor gas
Oven	calor gas
Fridge	Coolmatic + evaporator; both new in 2018
Hot water system	220V + engine
Water pressure system	electrical - new / nieuw / Neu 2021 + accumulator/drukvat/ Akkumulatör 2018
Manual and/or foot pump	New / nieuw / Neu 2018
Owners cabin	double bed + single bed
Bed length (m)	2,00 m.
Wardrobe	hanging/drawers/shelves
Bathroom	shared
Toilet	shared
Toilet system	manual - new / nieuw / Neu 2018
Wash basin	in the bathroom
Shower	shared
Guest cabin 1	v-bed
Bed length (m)	2,00 m.
Wardrobe	hanging/drawers/shelves
Bathroom	shared
Toilet	shared
Extra info	The salon is built with fair sized sofa berths at PS and SB - 2,00 meter length.

MACHINERY

No of engines	1
Make	Volvo Penta
Type	MD 22 A
HP	59
kW	43.42
Fuel	diesel



HALLBERG RASSY 352 SCANDINAVIA

Maximum speed (kn)	6 / 7
Cruising speed (kn)	5
Consumption (l/hr)	2
Engine hours	2367
Engine cooling system	freshwater heat exchanger
Drive	shaft
Engine controls	bowden cable - new / nieuw / Neu 2020
Gearbox	mechanical
Bowthruster	electric
Exhaust	watercooled
Propeller type	feathering
Propeller blades	3
Propeller shaft material	stainless steel - new / nieuw / Neu 2012
Shaft lubrication	grease
Manual bilge pump	yes
Electric bilge pump	yes
Bilge alarm	yes
Electrical installation	12V / 220V
Start battery	1 x 60 Ah - new in 2021
Service battery	6 x 60 Ah - new in 2018
Battery charger/inverter	Victron Atlas Combi 12/1100/40
Shorepower	with cable
Extra info	Additional engine information: circulation/waterpump & timing belt replaced in 2019. Heat exchanger cooling element cleaned in 2020.
Extra info	New engine mounts / rubbers in 2012.

NAVIGATION

Compass	Plath
Depth sounder	Autohelm
Log	Autohelm
VHF	B&G V60 Marine Radio + DSC & GPS - new in 2020



VHF handheld	B&G
Autopilot	Autohelm 6000
Plotter/GPS	Raymarine Axiom 7 DV MFD - new in 2020
AIS transponder	Weatherdock easyTRX3-IS-IGPS-N2K-IDVBT - new in 2020
Navigation lights	3 colour LED top light + deck light LED
Extra info	AIS transponder info: The abbreviation IS stands for - integrated splitter. IGPS stands for - integrated GPS antenna. N2K is a synonym for the new data network NMEA2000. DVB-T (DVB) stands for Digital video Broadcasting & FM radio Terrestrial.

EQUIPMENT

Fixed windscreen	yes
Sprayhood	Original Hallberg Rassy - renewed in 2011.
Winter cover	yes
Cockpit table	yes
Boarding ladder	stainless steel
Anchor	CQR Plough
Anchor chain	yes
Windlass	electrical
Sea railing	wire
Grab rail (superstructure)	teak
Pushpit	yes
Pulpit	yes
Life raft	container
Life raft (pers)	4
Last life raft survey	raft new in 2020
Lifebuoy	yes
Radar reflector	yes
Fenders	yes
Mooring lines	yes
Spare parts	yes
TV	Akai LCD



Radio-cd player	Sony with Aux and USB connection
Cockpit speakers	yes
Speakers in salon	yes
Clock - barometer	yes
Fire extinguisher	4 X
Auto extinguisher system	in engine room

RIGGING

Rigging	sloop
Standing rigging	wire - new / nieuw / Neu 2018
Brand mast	Seldén
Material mast	aluminium
Spreaders	2 sets with the optional tall rig stowaway mast.
Mainsail	29,5 m2 - new in 2019
Stoway mast	yes
Genoa	Hood - 29,84 m2 - 2008
Genoa furler	Furlex 304S + 8 mm front stay - new in 2018.
Reefing System	main in-mast furling
Boomvang	mechanical
Primary sheet winch	2 X Lewmar 46
Secondary sheet winch	2 X Lewmar 40
Halyard winches	2 X
Spi-pole	aluminium
Extra info	Mast foot (base) replaced in 2007.
Extra info	25 fixed mast steps, all the way to the top.



HALLBERG RASSY 352 SCANDINAVIA



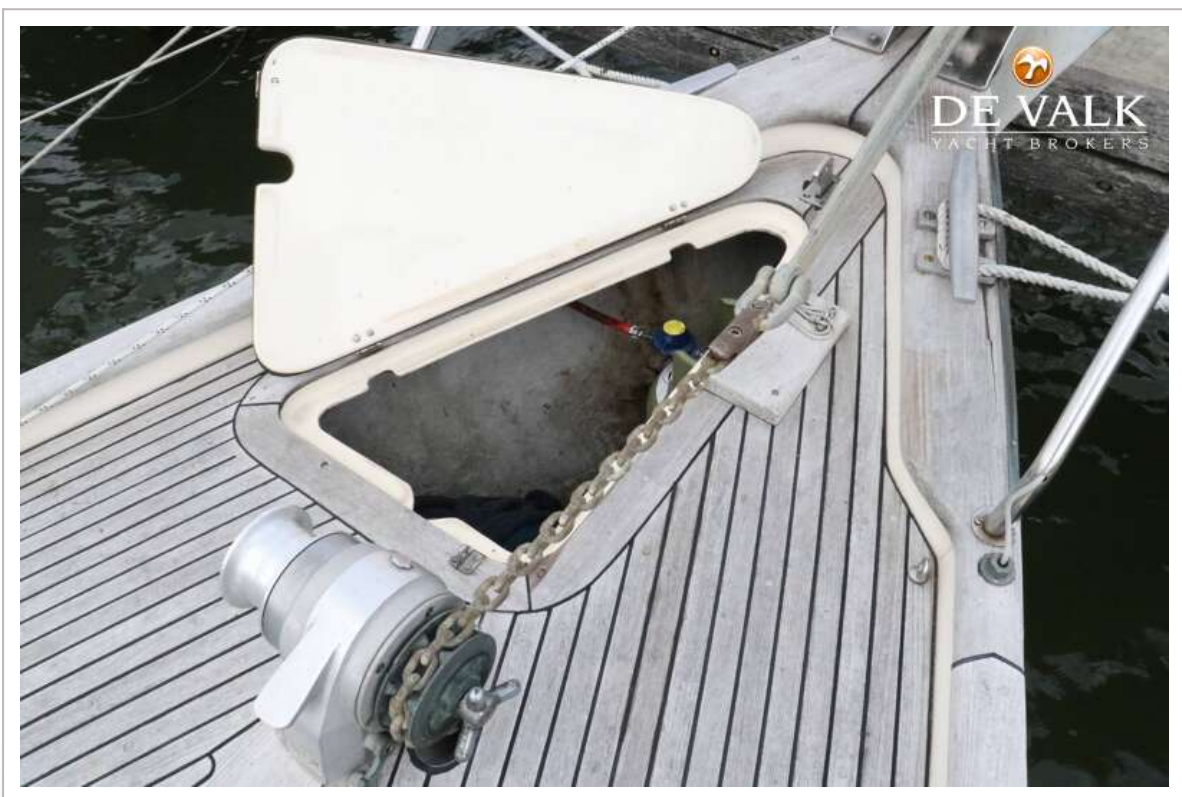
HALLBERG RASSY 352 SCANDINAVIA



HALLBERG RASSY 352 SCANDINAVIA



HALLBERG RASSY 352 SCANDINAVIA



HALLBERG RASSY 352 SCANDINAVIA



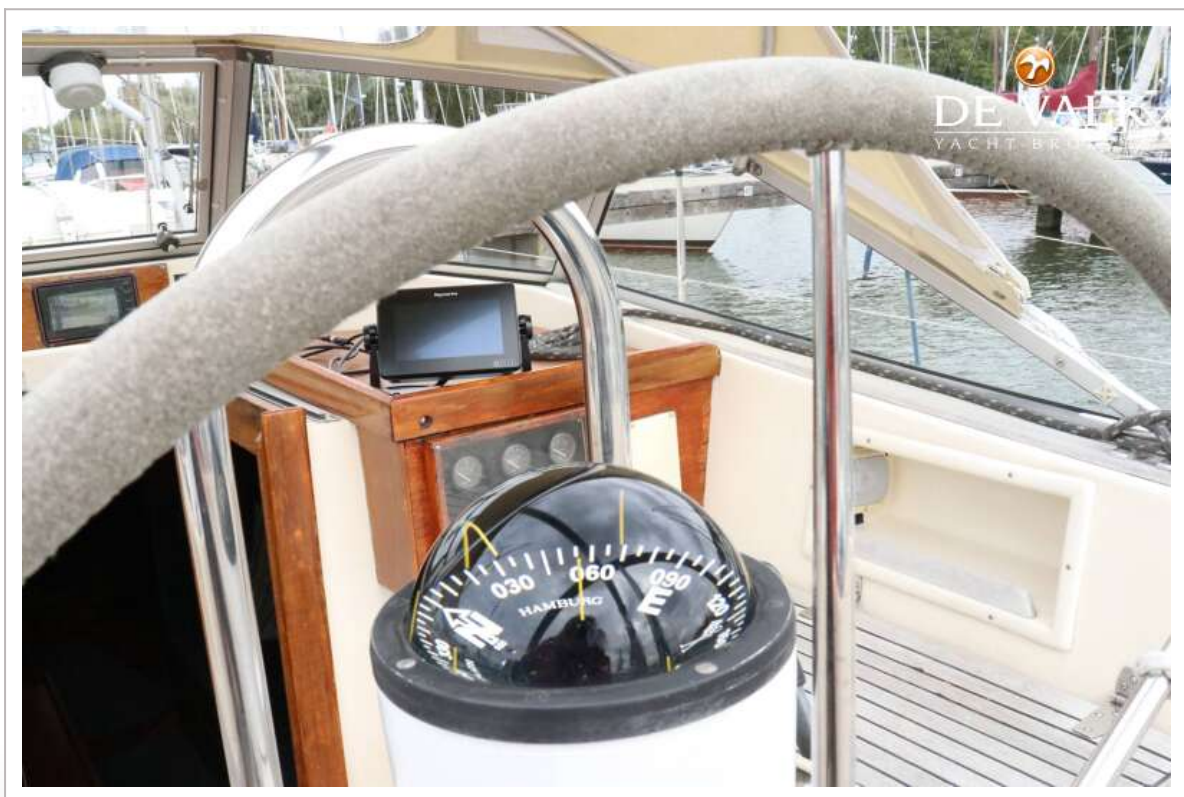
HALLBERG RASSY 352 SCANDINAVIA



HALLBERG RASSY 352 SCANDINAVIA



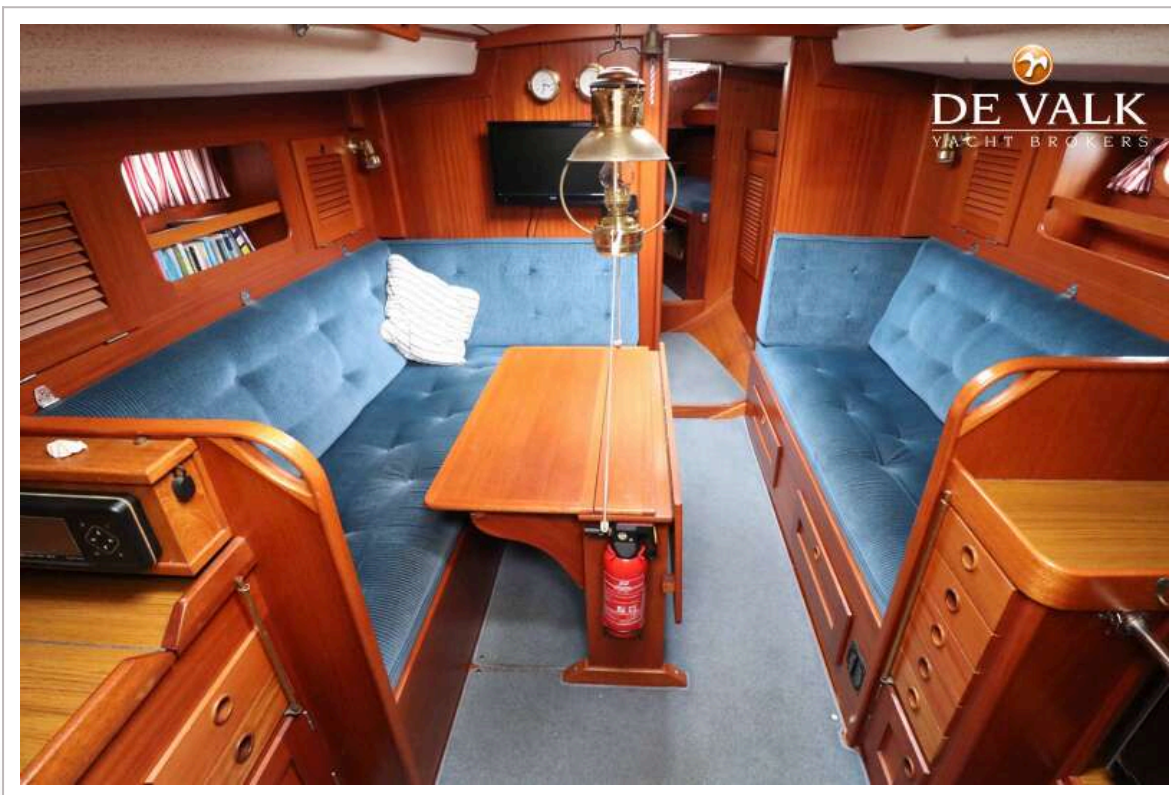
HALLBERG RASSY 352 SCANDINAVIA



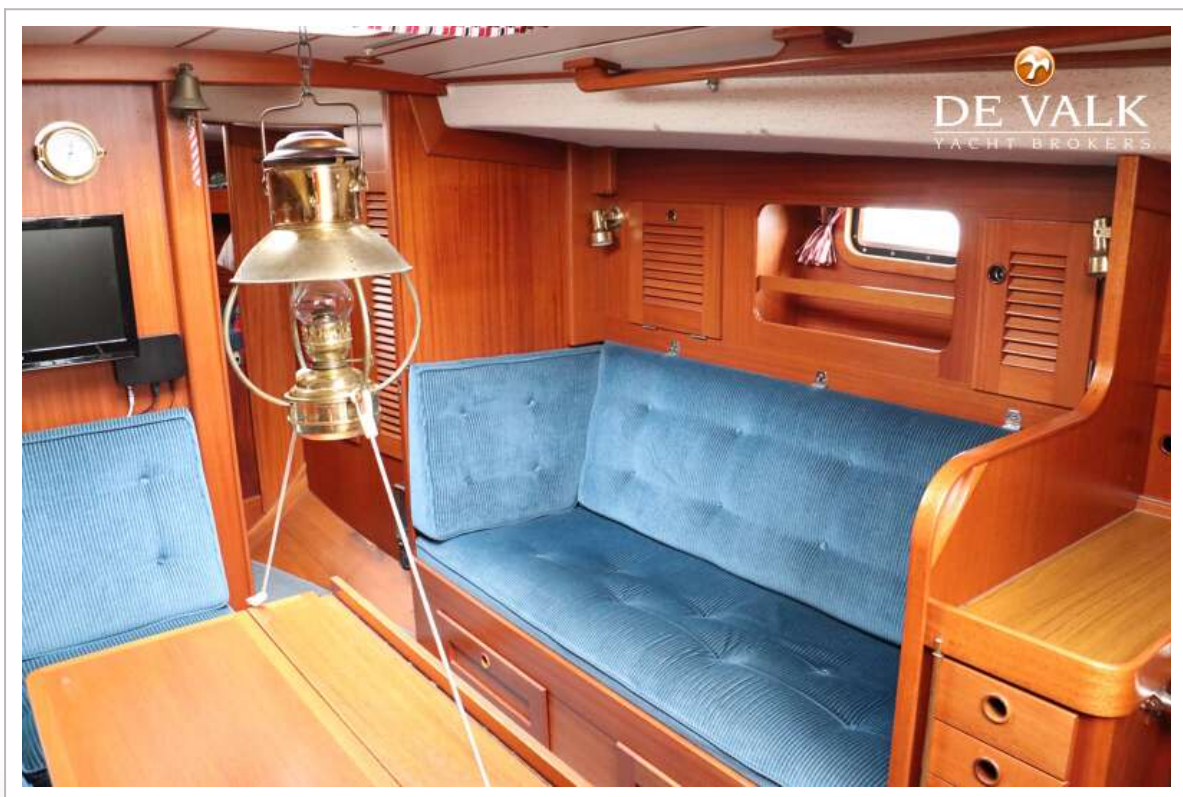
HALLBERG RASSY 352 SCANDINAVIA



HALLBERG RASSY 352 SCANDINAVIA



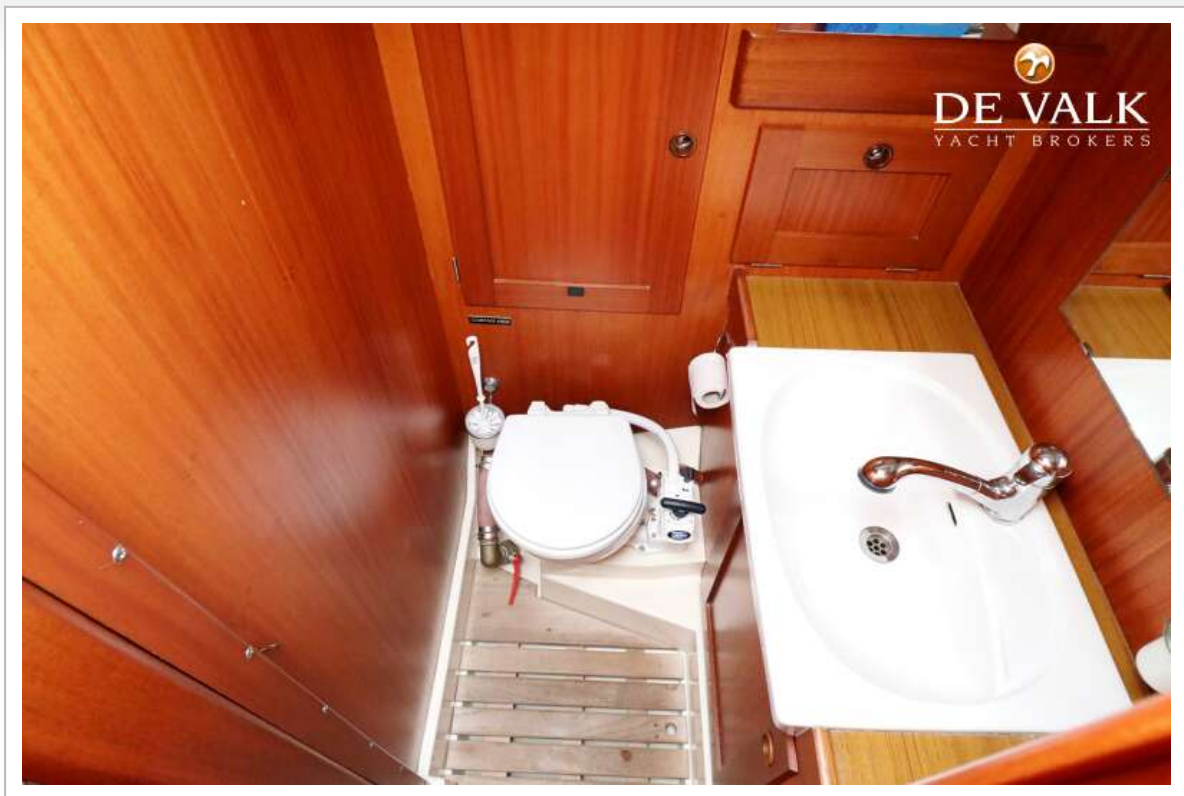
HALLBERG RASSY 352 SCANDINAVIA



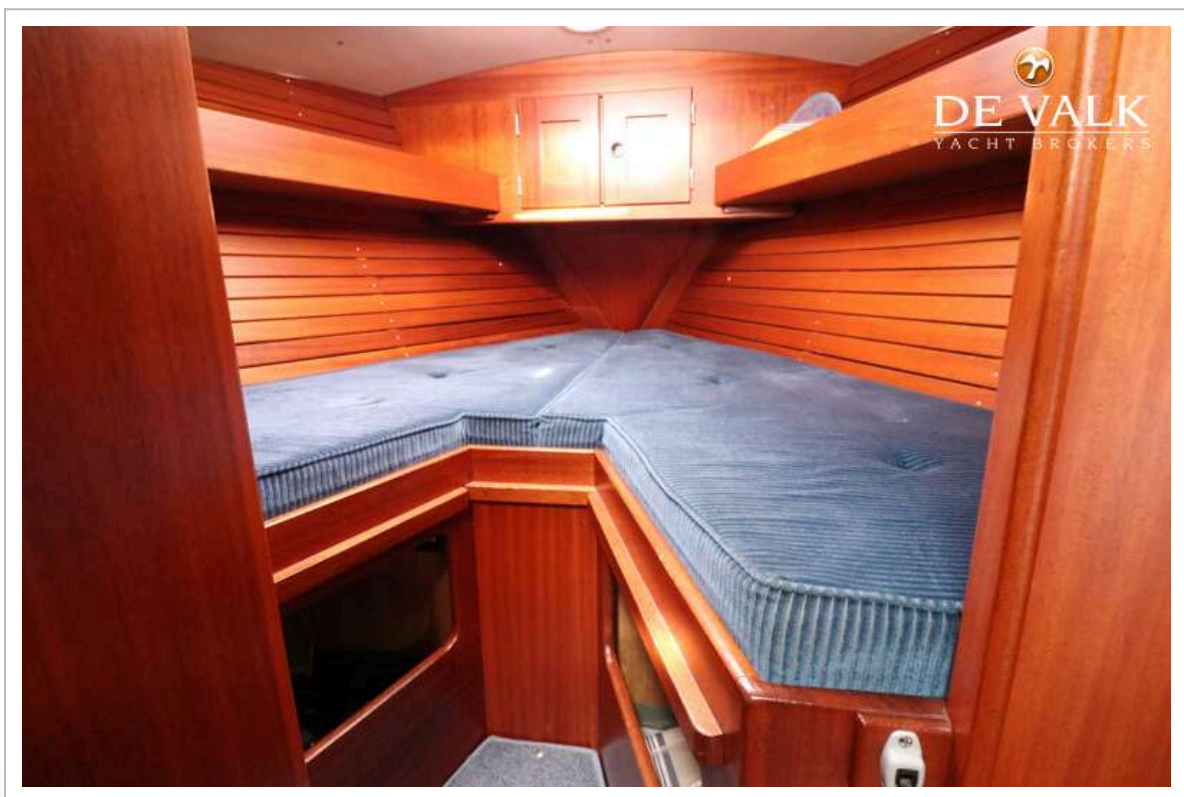
HALLBERG RASSY 352 SCANDINAVIA



HALLBERG RASSY 352 SCANDINAVIA



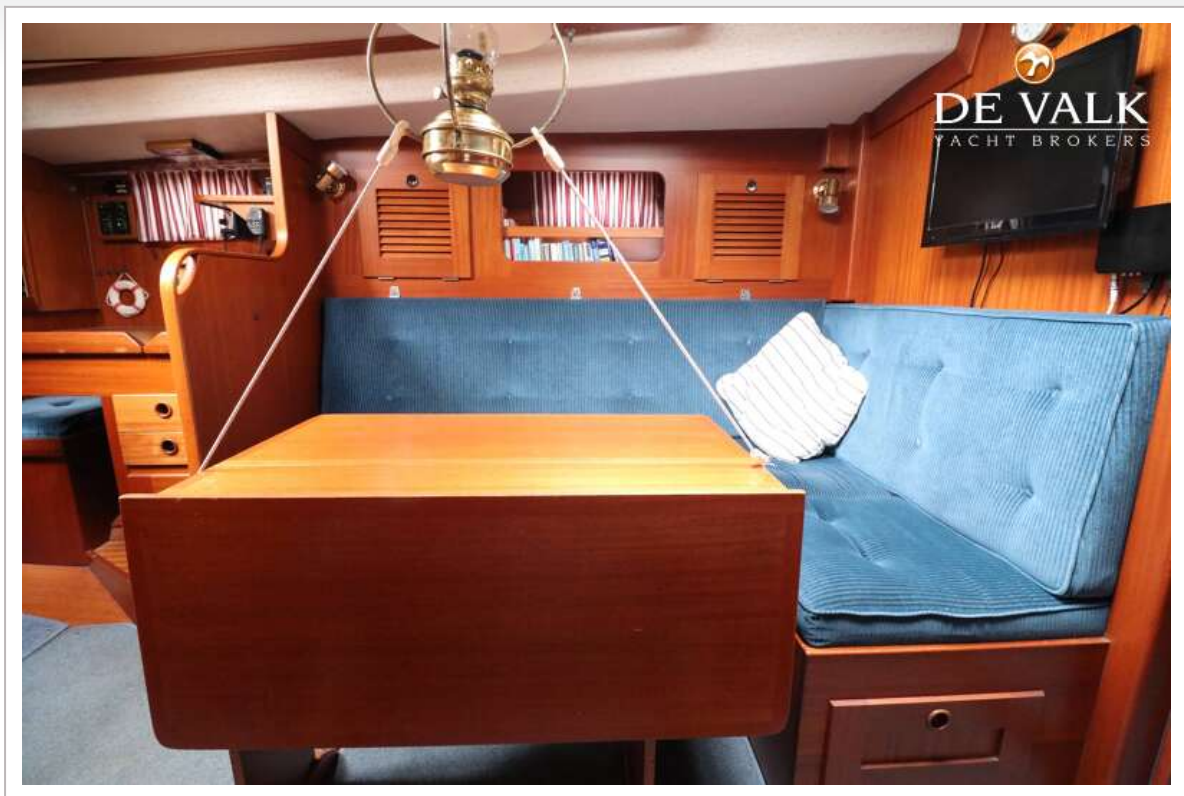
HALLBERG RASSY 352 SCANDINAVIA



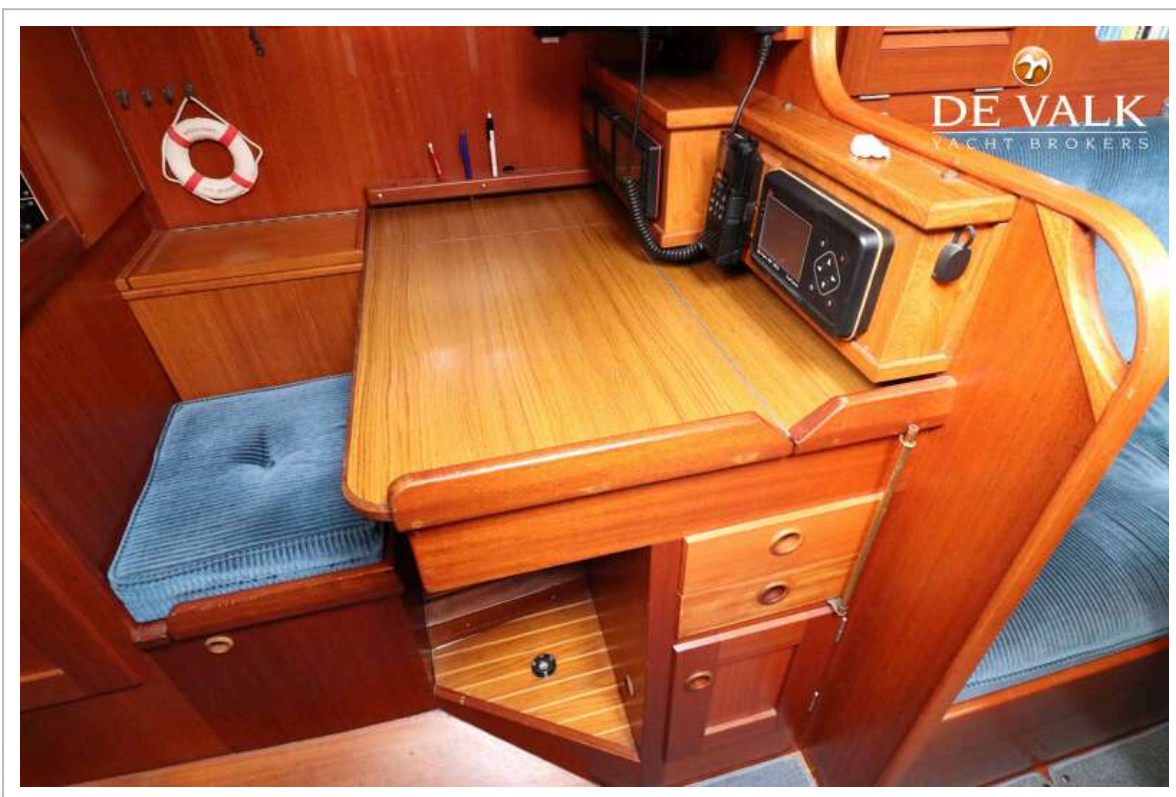
HALLBERG RASSY 352 SCANDINAVIA



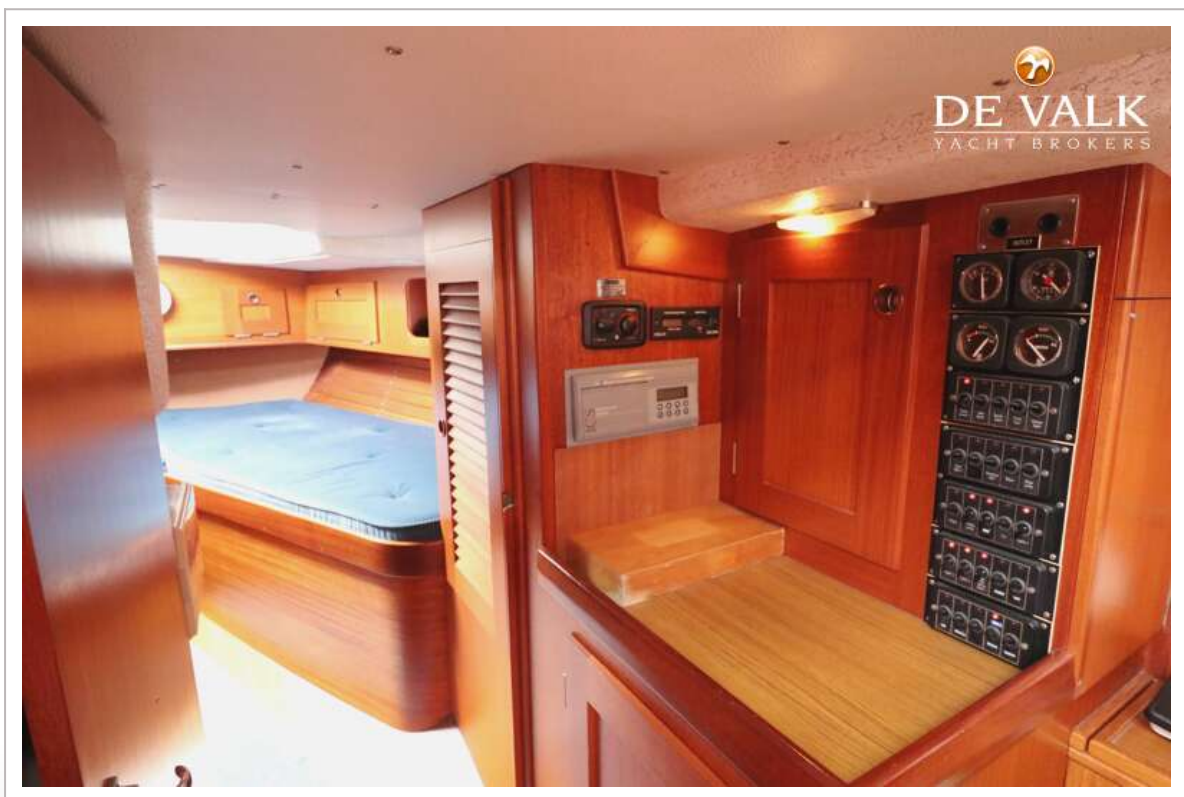
HALLBERG RASSY 352 SCANDINAVIA



HALLBERG RASSY 352 SCANDINAVIA



HALLBERG RASSY 352 SCANDINAVIA



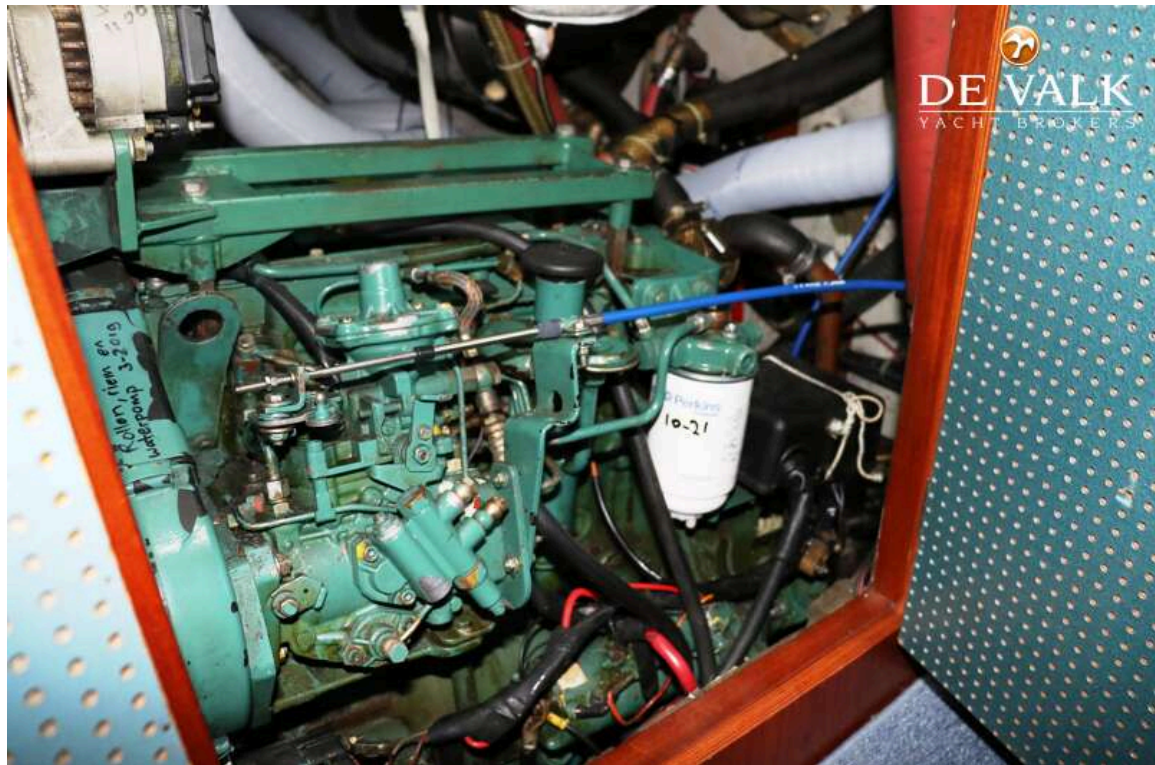
HALLBERG RASSY 352 SCANDINAVIA



HALLBERG RASSY 352 SCANDINAVIA



HALLBERG RASSY 352 SCANDINAVIA



HALLBERG RASSY 352 SCANDINAVIA

