



DE VALK

YACHT BROKERS



HALLBERG RASSY 352 SCANDINAVIA



DE VALK
YACHT BROKERS

HALLBERG RASSY 352 SCANDINAVIA

BROKER'S COMMENTS

The Hallberg Rassy 352 is one of the most sought after model of all categories on the second hand boat market. She features a comfortable interior with walk through to the aft cabin under deck, a 61 hp engine, combined with pleasant sailing qualities and nice lines. 802 hull of the HR 352 were built between 1978-1991. "Winston" comes complete on the market with a recent complete set of sails and recent auto pilot. She can seen in our sales marina in Katwoude 7 days a week

Reinier van der Wolf

SPECIFICATIONS

Dimensions	10.54 x 3.38 x 1.67 (m)	Builder	Hallberg Rassy VARV AB
Built	1984	Cabins	2
Material	GRP	Berths	6
Engine(s)	1 x Volvo Penta MD21B diesel	Hp/Kw	61.00 (hp), 44.90 (kw)
Asking price	sold (VAT)	Lying	at sales office

CONTACT

Sales office	De Valk Monnickendam B.V.	Telephone	+31 (0)299 65 63 50
Address	Hoogedijk 6 1145 PM Katwoude NL	E-mail	monnickendam@devalk.nl

DISCLAIMER

These particulars are given in good faith as supplied but cannot be guaranteed.



HALLBERG RASSY 352 SCANDINAVIA

GENERAL

Model	HALLBERG RASSY 352 SCANDINAVIA
Type	sailing yacht
LOA (m)	10,54
LWL (m)	8,70
Beam (m)	3,38
Draft (m)	1,67
Air draft (m)	14,60
Headroom (m)	1,85
Year built	1984
Builder	Hallberg Rassy VARV AB
Country	Sweden
Designer	Christoph Rassy & Olle Enderlein
Displacement (t)	6,7
Ballast (tonnes)	cast iron 3
Hull material	GRP
Hull colour	off-white
Hull shape	round-bilged
Keel type	long keel
Superstructure material	GRP
Rubbing strake	stainless steel
Deck material	GRP
Deck finish	teak
Superstructure deck finish	teak
Cockpit deck finish	teak
Dorades	3x
Window frame	aluminium
Window material	perspex
Deckhatch	4x
Fuel tank (litre)	stainless steel - 240 L
Level indicator (fuel tank)	yes



HALLBERG RASSY 352 SCANDINAVIA

Freshwater tank (litre)	stainless steel - 300 L
Level indicator (freshwater)	yes
Blackwater tank (litre)	stainless steel - 20 L
Blackwater tank extraction	yes
Wheel steering	mechanical

ACCOMMODATION

Cabins	2
Berths	6
Interior	mahogany
Floor	teak and holly
Saloon	yes
Headroom saloon (m)	1.90 m
Heating	diesel ducted hot air - Planar 44 D
Chart table	yes
Aft Cabin	yes
Dinette to convert into berth	yes
Galley	yes
Countertop	wood
Sink	stainless steel - double
Cooker	calor gas - Optimus International
Oven	yes
Fridge	Waeco
Hot water system	220V + engine - boiler
Water pressure system	electrical
Manual and/or foot pump	yes
Crockery	yes
Owners cabin	double bed + single bed
Wardrobe	hanging and shelves
Bathroom	separate
Toilet	separate



HALLBERG RASSY 352 SCANDINAVIA

Toilet system	manual - Jabsco
Wash basin	in the bathroom
Shower	separate
Guest cabin 1	v-bed
Wardrobe	hanging and shelves
Bathroom	shared
Toilet	shared
Wash basin	at the toilet
Shower	shared

MACHINERY

No of engines	1
Make	Volvo Penta
Type	MD21B
HP	61
kW	44.90
Fuel	diesel
Year installed	1984
Engine hours	3184
Engine cooling system	freshwater heat exchanger
Drive	shaft
Engine controls	bowden cable - Volvo Penta
Gearbox	mechanical - Volvo Penta
Exhaust	watercooled
Propeller type	feathering
Propeller blades	3
Propeller shaft material	stainless steel
Shaft lubrication	water
Manual bilge pump	yes
Electric bilge pump	yes
Electrical installation	12v



HALLBERG RASSY 352 SCANDINAVIA

Batteries	3x
Start battery	1x 95 ah
Service battery	2x 105 ah
Battery charger	Victron

NAVIGATION

Compass	Sestrel N233453 IV
Multi control display	AdvanSea S400 Including Depth sounder/log
Windset	in cockpit, defective sensor in mast - AdvanSea S400
VHF	at chart table - B&G V50
VHF handheld	Icom
Autopilot	in Cockpit - Raymarine
Radar	Furuno
Plotter	at chart table - B&G
AIS transponder	yes
Navigation lights	yes

EQUIPMENT

Fixed windscreen	yes
Sprayhood	yes
Winter cover	yes
Cockpit cushions	yes
Cockpit table	yes
Boarding ladder	stainless steel
Anchor	CQR Plough
Anchor chain	yes
Windlass	manual
Outboard support	yes
Sea railing	wire
Grab rail (superstructure)	teak
Railing side opening gates	on both sides



Pushpit	yes
Pulpit	yes
Life raft	container
Last life raft survey	expired
Lifejackets	4x
Lifebuoy	Plastimo
Fenders	yes
Mooring lines	yes
TV	Salora
Radio	Kenwood
Speakers in salon	yes
Clock - barometer	yes
Fire extinguisher	yes

RIGGING

Rigging	sloop
Standing rigging	wire - original origineel Original
Brand mast	Seldén
Material mast	aluminium
Spreaders	1x
Mainsail	new 2017
Mainsail cover	yes
Genoa	new 2017
Genoa furler	Seldén Furler 200 S
Genoa cover	yes
Gennaker	yes
Boomvang	mechanical and tackle - Seldén
Genoa sheetwinches	2x Lewmar 46 ST
Halyard winches	2x Lewmar 16 - on mast / aan mast/ am Mast
Spi-pole	aluminium



HALLBERG RASSY 352 SCANDINAVIA



HALLBERG RASSY 352 SCANDINAVIA



HALLBERG RASSY 352 SCANDINAVIA



HALLBERG RASSY 352 SCANDINAVIA



HALLBERG RASSY 352 SCANDINAVIA



HALLBERG RASSY 352 SCANDINAVIA



HALLBERG RASSY 352 SCANDINAVIA



HALLBERG RASSY 352 SCANDINAVIA



HALLBERG RASSY 352 SCANDINAVIA



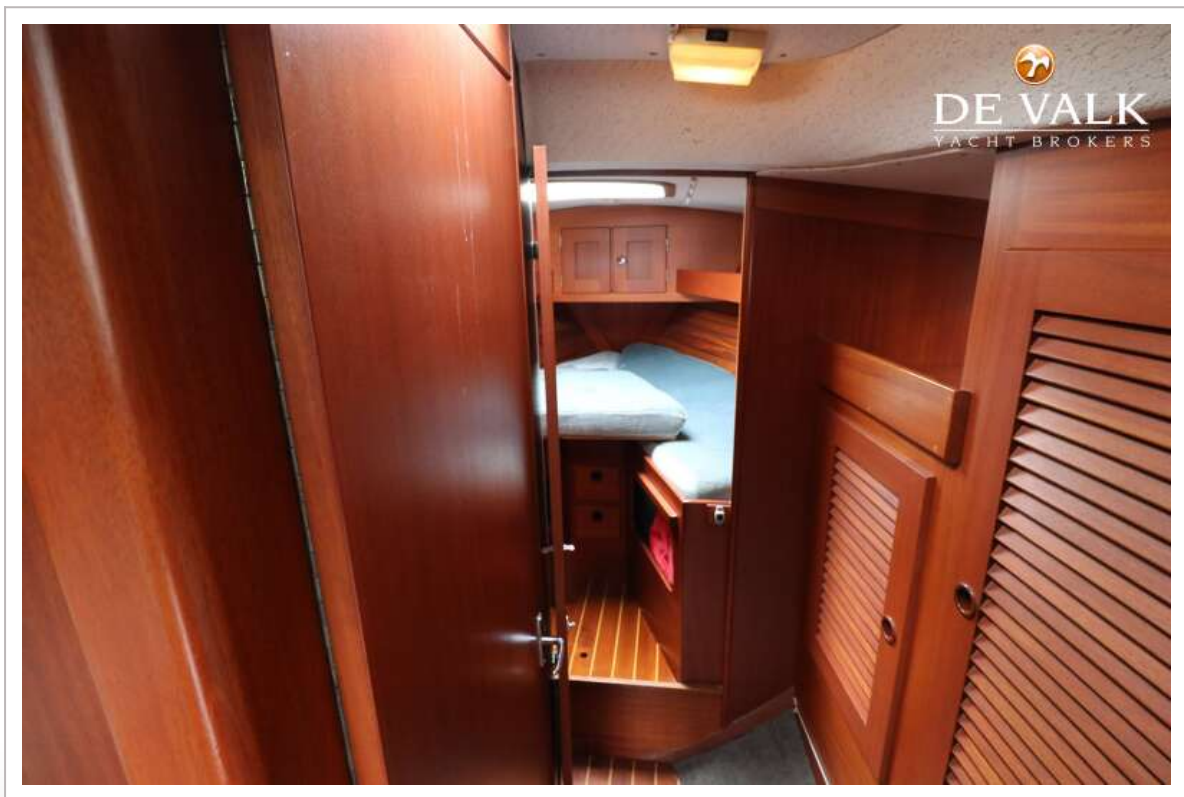
HALLBERG RASSY 352 SCANDINAVIA



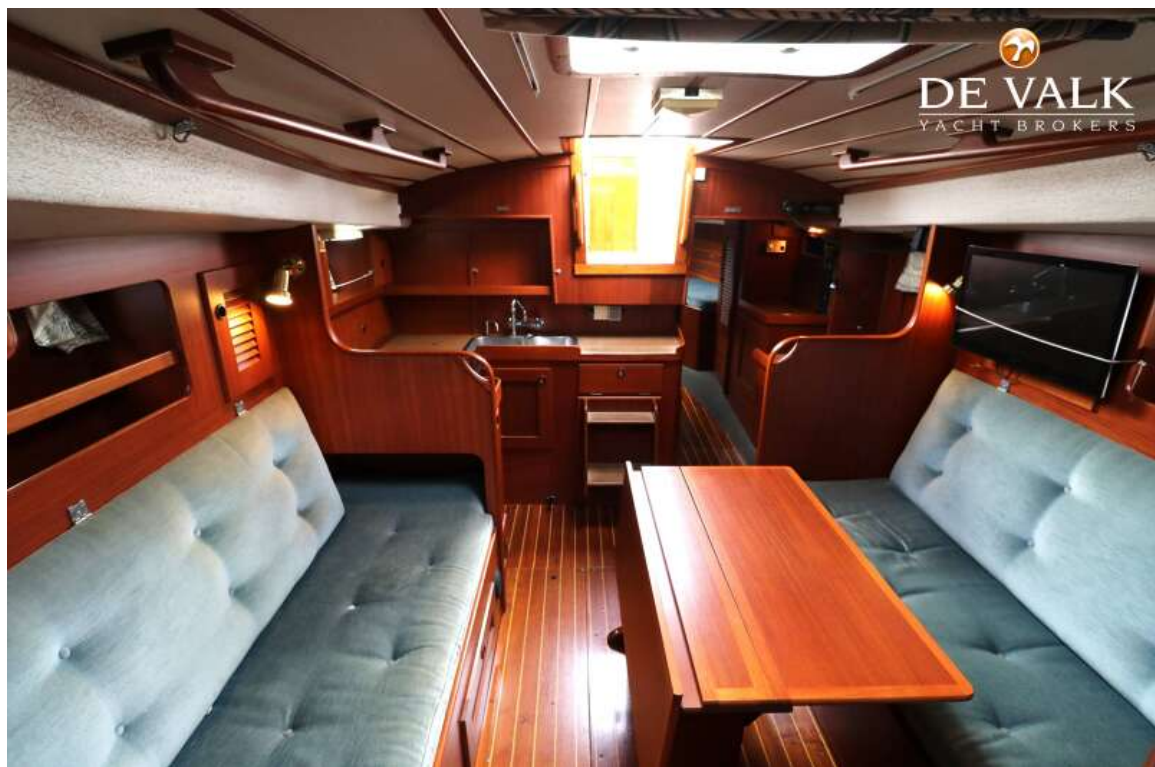
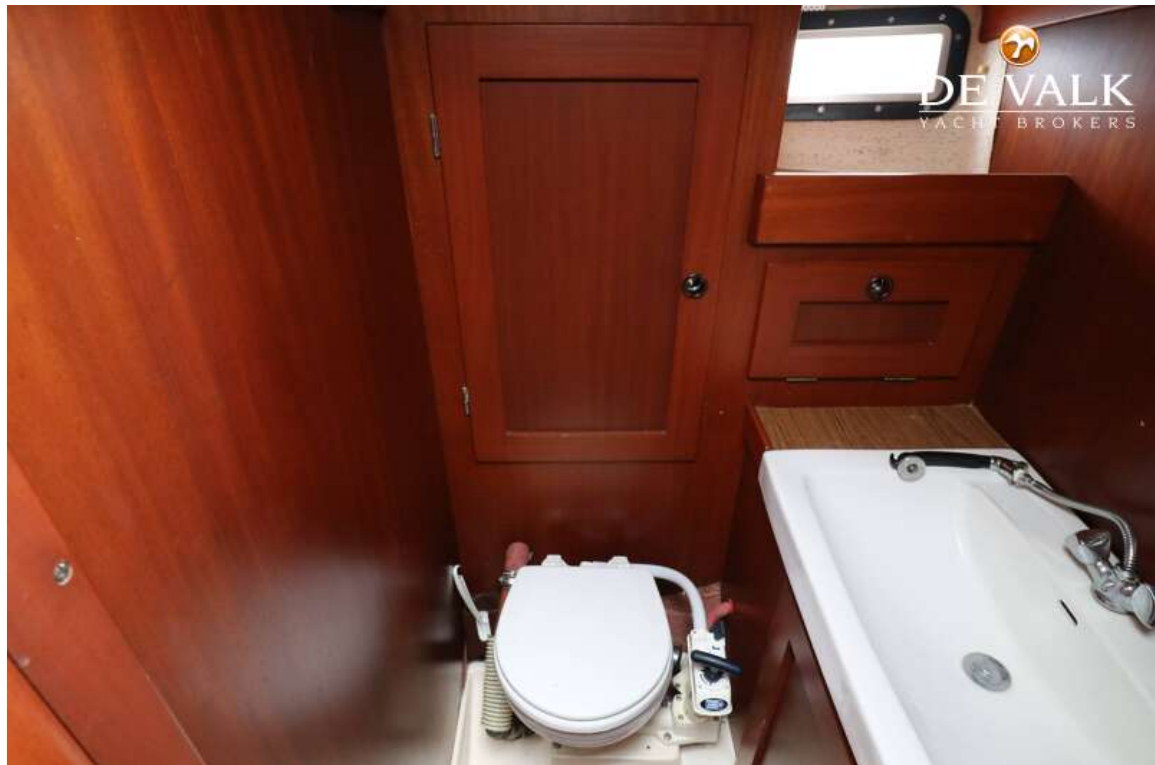
HALLBERG RASSY 352 SCANDINAVIA



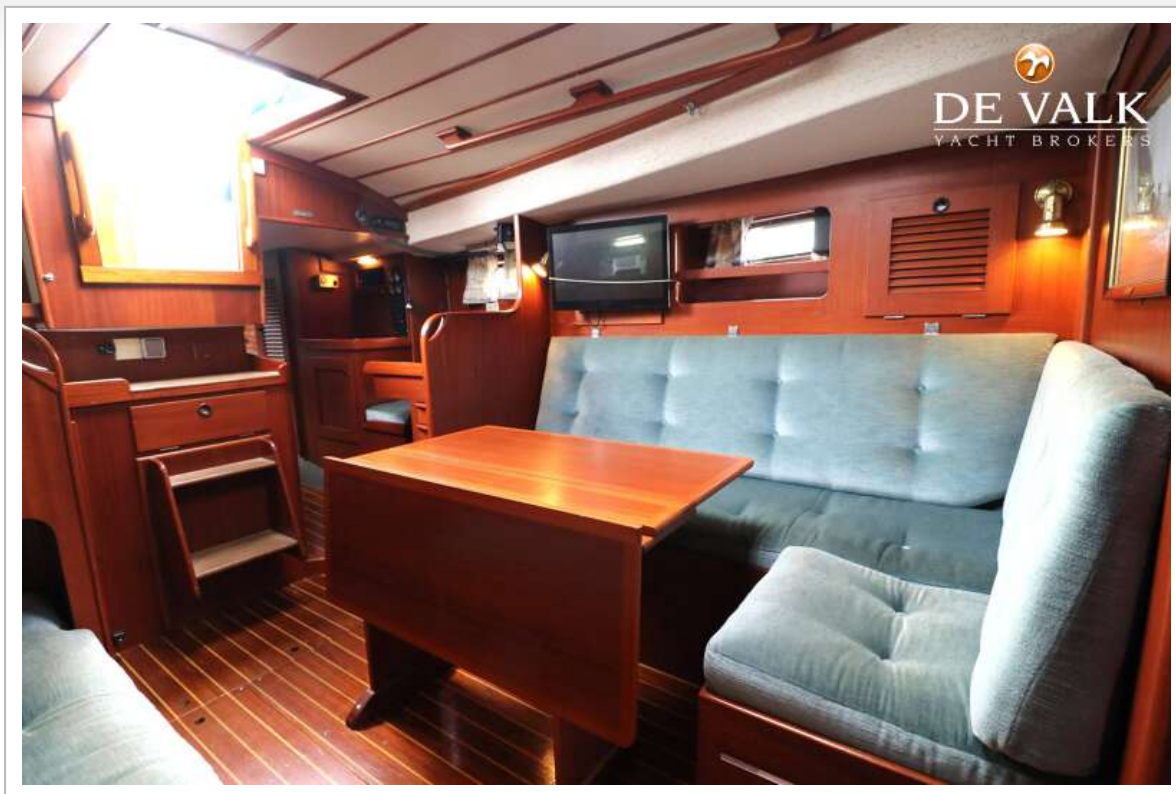
HALLBERG RASSY 352 SCANDINAVIA



HALLBERG RASSY 352 SCANDINAVIA



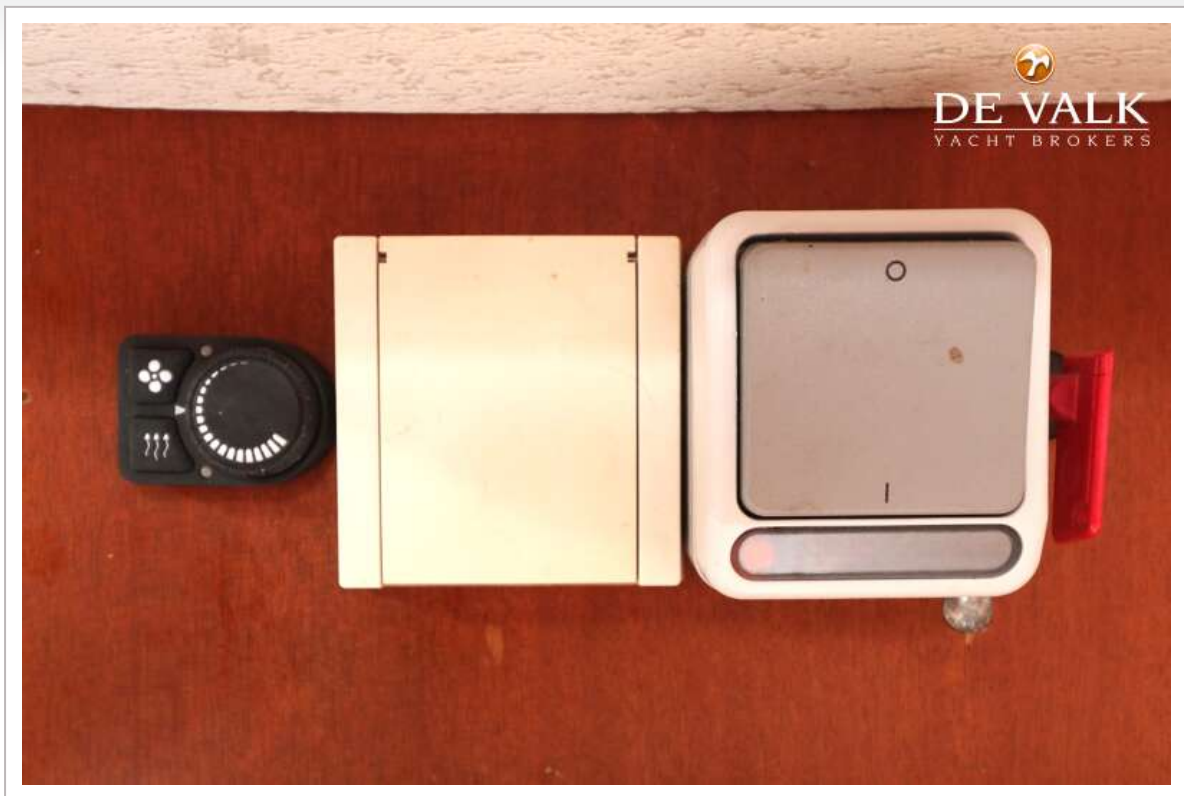
HALLBERG RASSY 352 SCANDINAVIA



HALLBERG RASSY 352 SCANDINAVIA



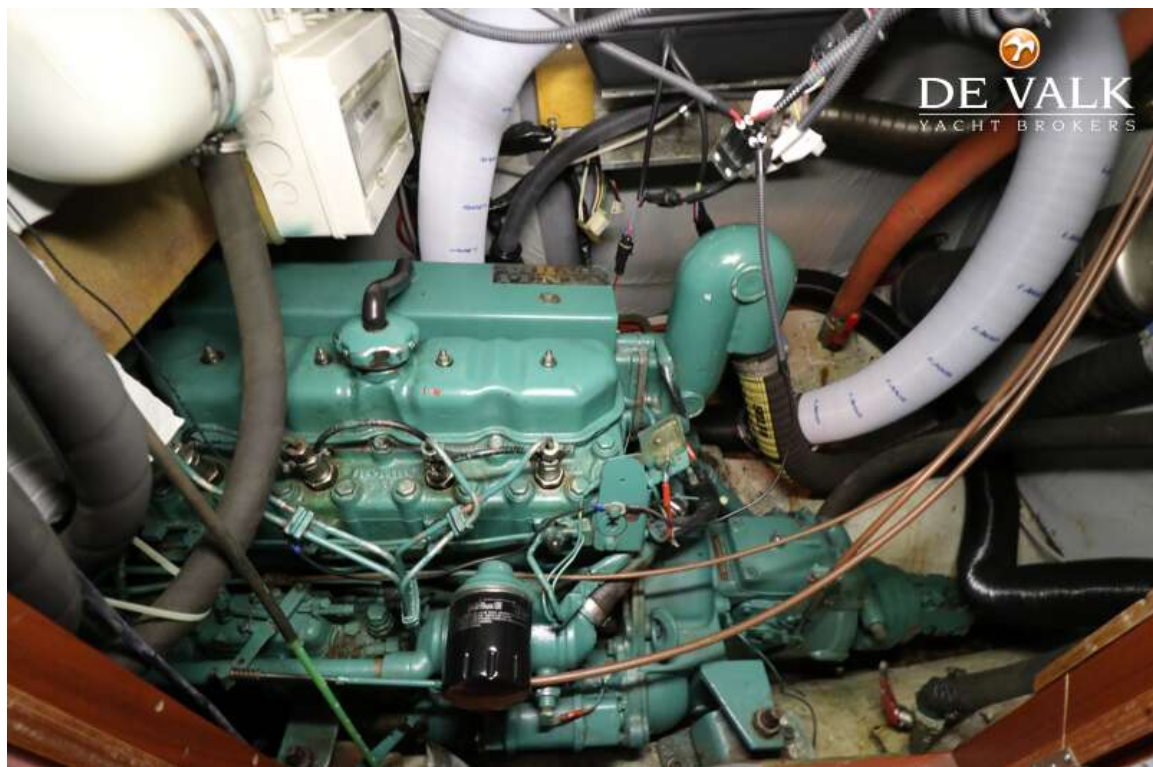
HALLBERG RASSY 352 SCANDINAVIA



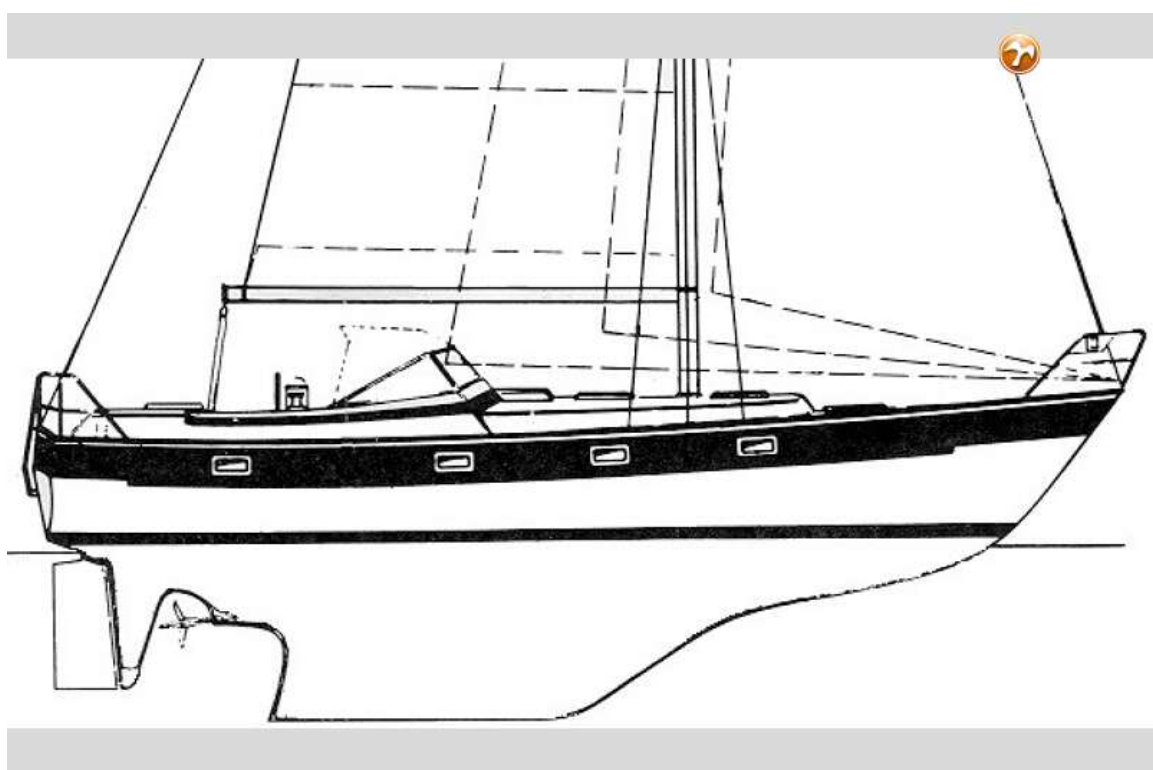
HALLBERG RASSY 352 SCANDINAVIA



HALLBERG RASSY 352 SCANDINAVIA



HALLBERG RASSY 352 SCANDINAVIA



HALLBERG RASSY 352 SCANDINAVIA

