



ETAP 32S

## BROKER'S COMMENTS

The Etap 32S is a boat for people who like comfort, safety and performance all in one. Etap has been named as the "unsinkable yacht" due to its double hull construction. The designer has taken into consideration the practicalities necessary on a 32ft boat and presented you with the 32S. She comes prepared for Short-handed sailing and all rigging and sailing controls have been led to the cockpit to enable safe and easy handling. This first and only owner Etap 32 is maintained very well and is ready for a visit by you in Sint Annaland

*Joris van de Rijt*

## SPECIFICATIONS

<b>Dimensions</b>	9.84 x 3.42 x 1.30 (m)	<b>Builder</b>	Etap Yachting NV Westmalle
<b>Built</b>	2005	<b>Cabins</b>	2
<b>Material</b>	GRP	<b>Berths</b>	6
<b>Engine(s)</b>	1 x Volvo Penta D1-20 diesel	<b>Hp/Kw</b>	19.00 (hp), 13.98 (kw)
<b>Asking price</b>	sold (VAT )	<b>Lying</b>	at sales office

## CONTACT

<b>Sales office</b>	De Valk Sint Annaland B.V.	<b>Telephone</b>	+31 (0)166 601 000
<b>Address</b>	Koelhuisweg 4 4697 RM Sint Annaland NL	<b>E-mail</b>	sintannaland@devalk.nl

## DISCLAIMER

These particulars are given in good faith as supplied but cannot be guaranteed.



## GENERAL

Model	ETAP 32S
Type	sailing yacht
LOA (m)	9,84
LWL (m)	8,38
Beam (m)	3,42
Draft (m)	1,30
Air draft (m)	14,50
Headroom (m)	1,90
Year built	2005
Launched	2006
Builder	Etap Yachting NV Westmalle
Country	Belgium
Displacement (t)	3,89
Ballast (tonnes)	cast iron 1,29
CE norm	A
Hull material	GRP
Hull colour	white
Hull shape	round-bilged
Keel type	tandem keel
Superstructure material	GRP
Rubbing strake	aluminum
Deck material	GRP
Deck finish	TBS non-skid profile mats
Superstructure deck finish	non-skid moulded in
Cockpit deck finish	teak
Antifouling (year)	09-2021
Window frame	aluminium
Window material	polycarbonate
Deckhatch	yes
Radar arch	Removable



Fuel tank (litre)	stainless steel 82
Level indicator (fuel tank)	yes
Freshwater tank (litre)	polyethylene 170
Level indicator (freshwater)	yes
Blackwater tank (litre)	stainless steel 65
Blackwater tank extraction	deck extraction + uw line
Tiller	Etap Vertical Steering
Emergency tiller	yes

## ACCOMMODATION

Cabins	2
Berths	6
Interior	beech
Floor	woodprint
Headroom saloon (m)	1,90
Heating	diesel ducted hot air Webasto
Chart table	yes
Dinette	yes
Galley	yes
Countertop	plastic
Sink	stainless steel
Cooker	calor gas Eno
Oven	Eno
Fridge	yes
Hot water system	220V + engine
Water pressure system	electrical
Owners cabin	v-bed
Bed length (m)	2,20
Wardrobe	hanging and shelves
Bathroom	shared
Toilet	shared



Toilet system	manual
Wash basin	in the bathroom
Shower	shared
Guest cabin 1	double bed
Bed length (m)	2,00
Wardrobe	hanging and shelves

## MACHINERY

No of engines	1
Make	Volvo Penta
Type	D1-20
HP	19
kW	13.98
Fuel	diesel
Year installed	2006
Engine cooling system	freshwater heat exchanger
Drive	sail-drive
Saildrive seal	New 2019
Shaft seal	New 2019
Engine controls	bowden cable
Gearbox	mechanical
Propeller type	folding Gori
Propeller blades	3
Manual bilge pump	yes
Electric bilge pump	yes
Electrical installation	12V / 230V
Start battery	1 x (2020)
Service battery	2 x (2020)
Battery monitor	yes
Battery charger	Philippi AL12/30
Wind generator	yes



Shorepower

with cable

## NAVIGATION

Compass

Suunto

Depth sounder

Raymarine ST60

Log

Raymarine ST60

Windset

Raymarine ST60

Repeater

ST 60 graphic + ST60 multi

VHF

Simrad RS 82 + cockpit connection

VHF handheld

Icom

Autopilot

Raymarine ST4000 with remote + reserve actuator

Radar

Raymarine Quantum Q24C (2021)

Radar/GPS/plotter

Raymarine Axiom Pro 9 (2018)

Electronic chart(s)

yes

AIS transponder

Graphene CTRX (2014)

Navigation lights

yes

## EQUIPMENT

Sprayhood

(2018)

Cockpit cover

yes

Cockpit table

yes

Bathing platform

yes

Boarding ladder

stainless steel

Anchor

Delta + spare anchor

Anchor chain

yes

Windlass

manual Simpson Lawrence

Sea railing

stainless steel

Grab rail (superstructure)

aluminium

Life raft (pers)

valise (or bag) Plastimo Cruiser 4

Last life raft survey

Valid untill 03-2023

Lifebuoy

yes



Danbuoy	yes
Radar reflector	yes
Fenders	yes
Mooring lines	yes
Radio-cd player	Pioneer
Speakers in salon	yes
Clock - barometer	yes
Fire extinguisher	yes

## RIGGING

Rigging	fractional
Standing rigging	wire (2005) checkt in 2021
Brand mast	Seldén
Material mast	aluminium
Spreaders	2 sets
Mainsail cover	Lazybag (2020)
Fully battened mainsail	Elvstrom (2018)
High aspect	Lion sails (2006)
Genoa	Elvstrom (2006)
Genoa furler	Furlex 200S
Genoa cover	New 2022
Gennaker	De Boer with squeezer (2006)
Removable innerforestay	+ self tacking Jib Elvstrom (2011) and storm jib (2006)
Self tacking jib installation	Mounted 2011 + Jib (2014)
Reefing System	quick-one-line-reefing
Boomvang	gasspring Rodkicker
Genoa sheetwinches	2 x Lewmar 30ST
Halyard winches	2 x Lewmar 16ST
Spi-pole	aluminium 1 x fixed 1 x extendable
Extra info	"Walder" anti gibe system









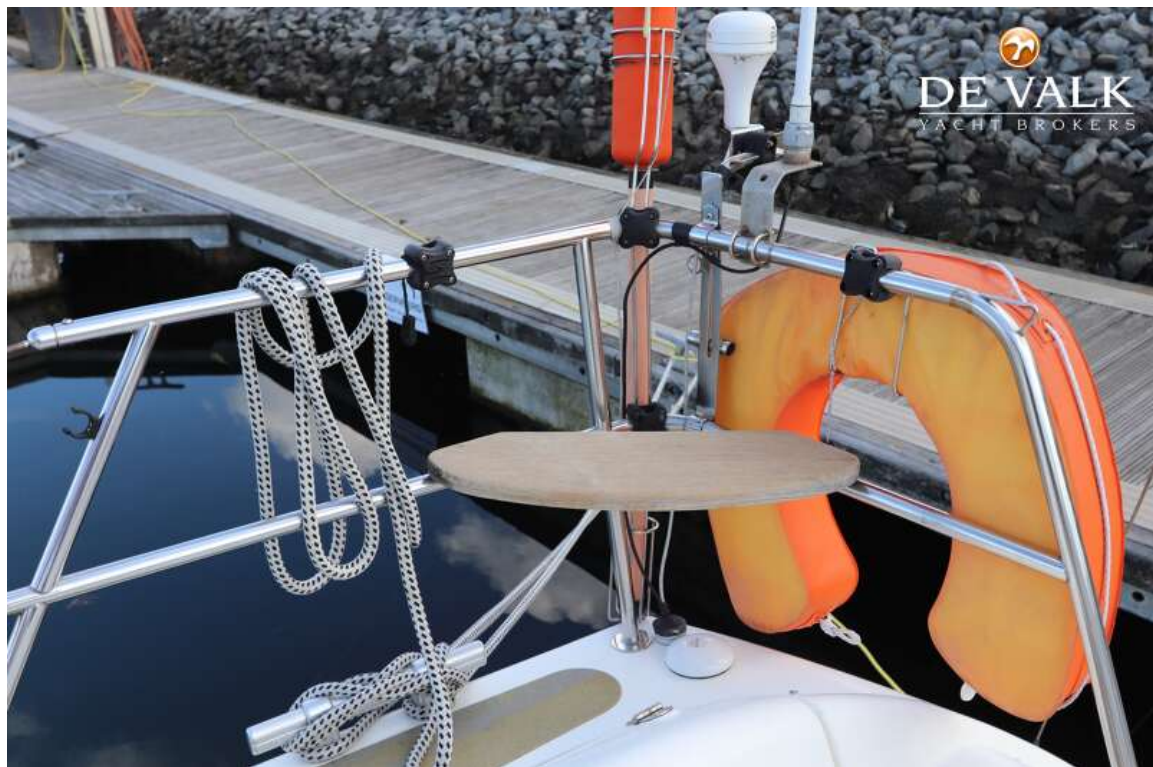








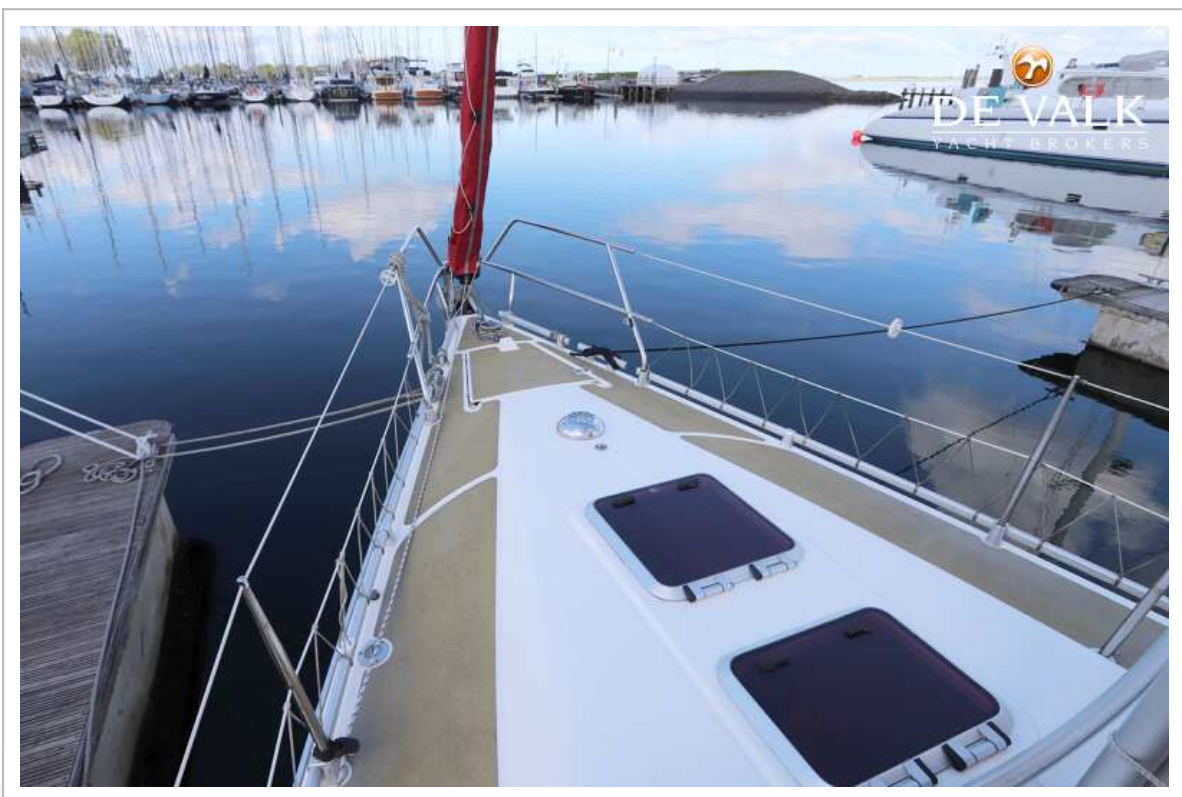
















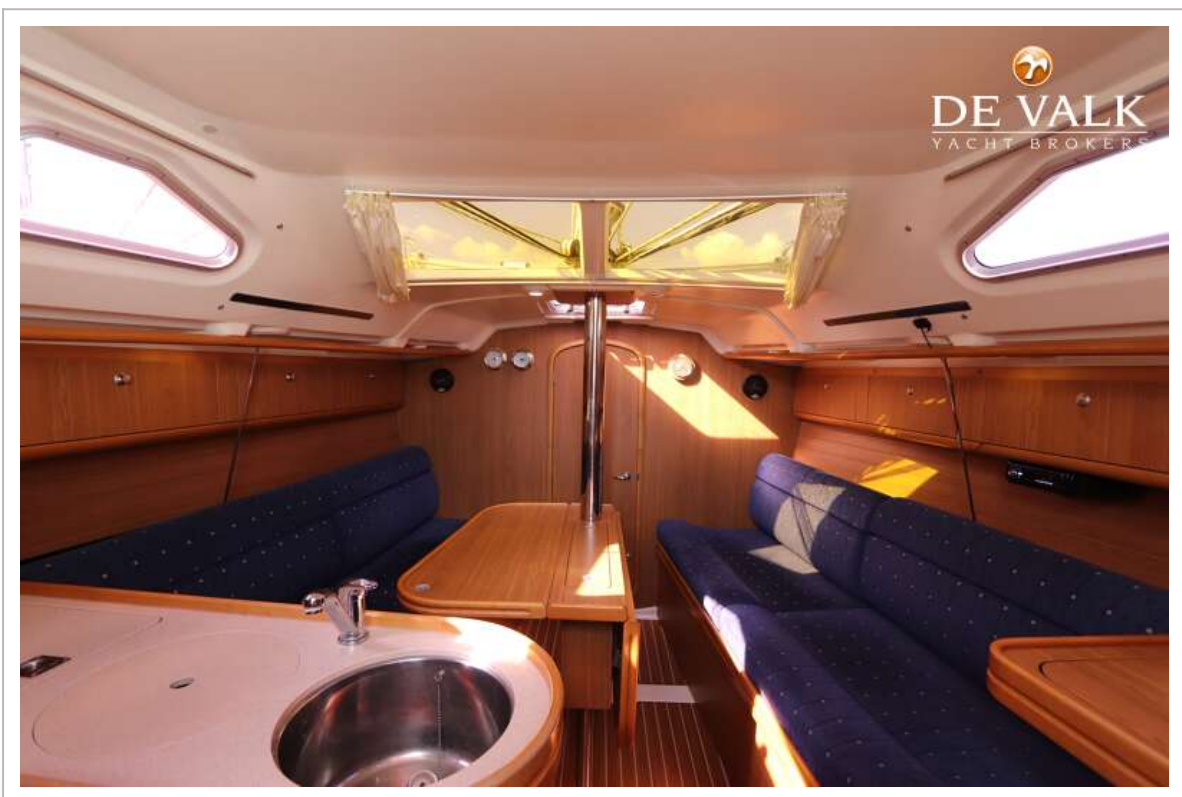






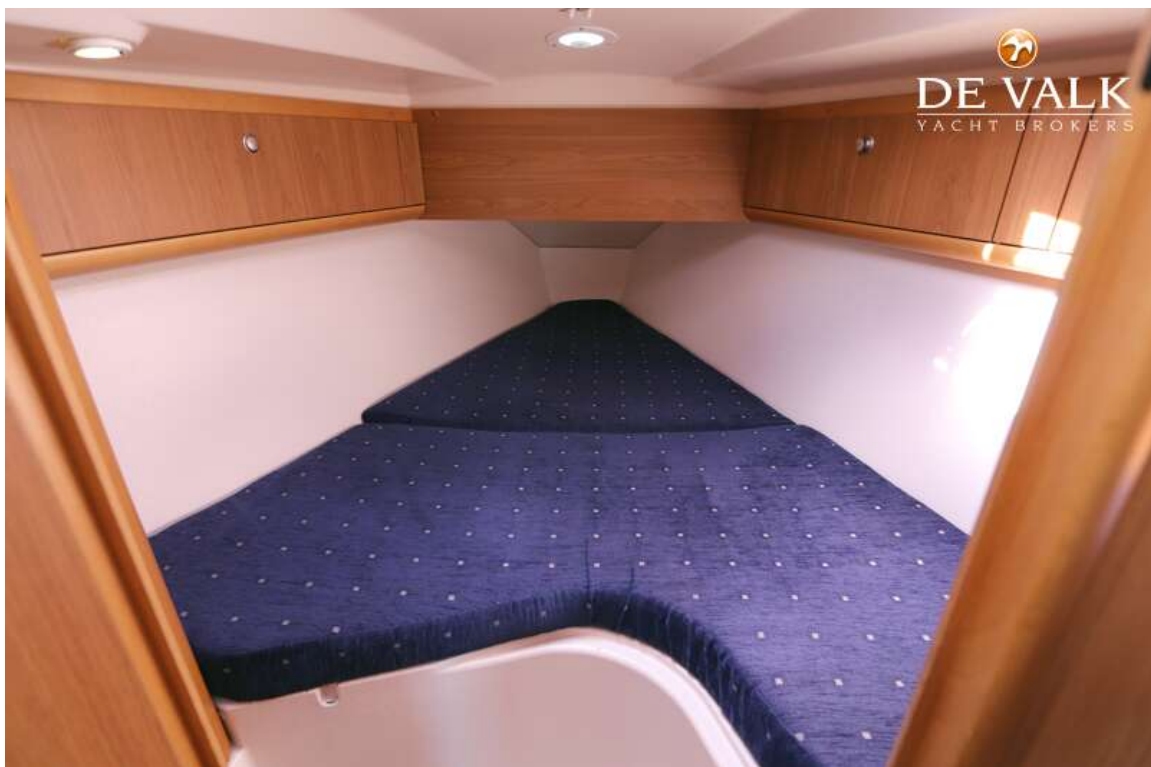








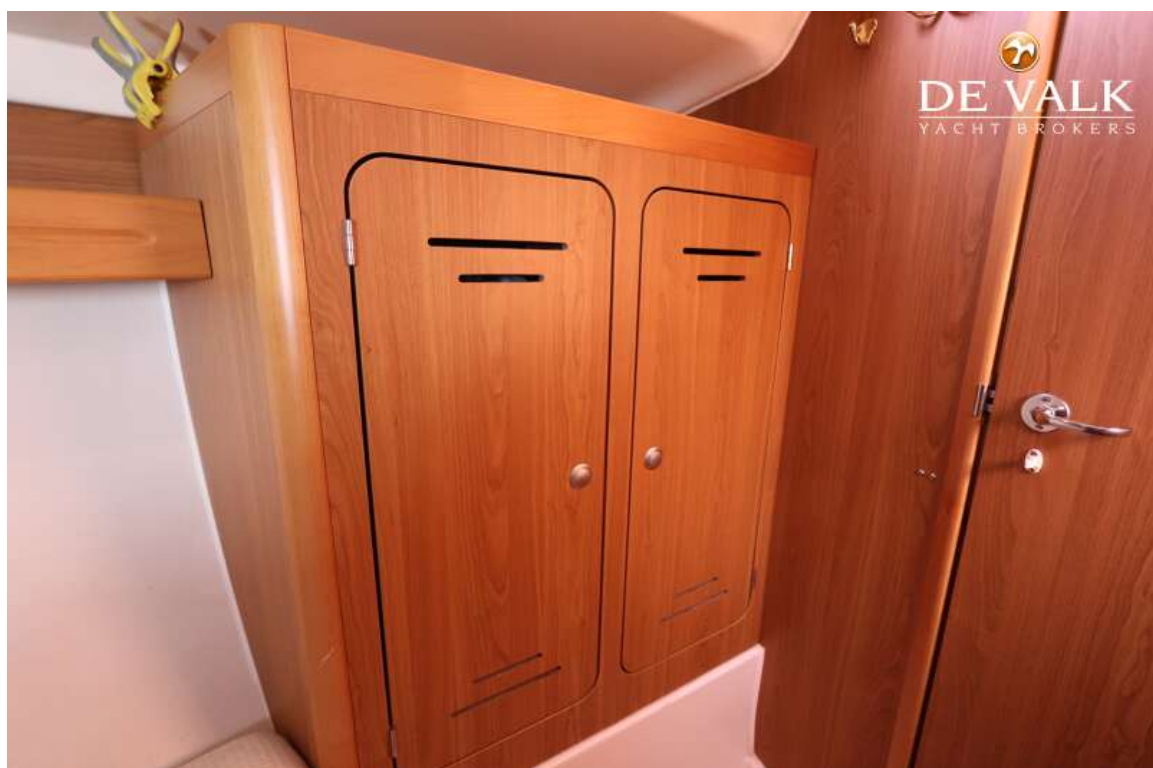
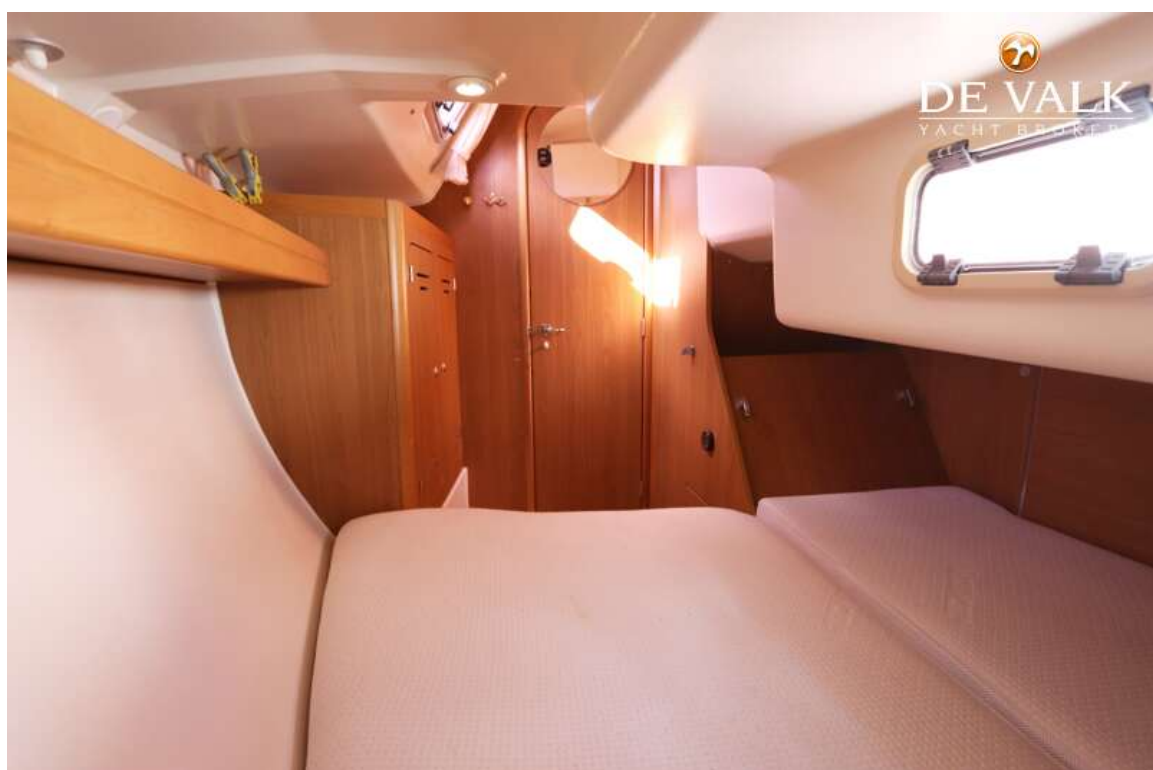


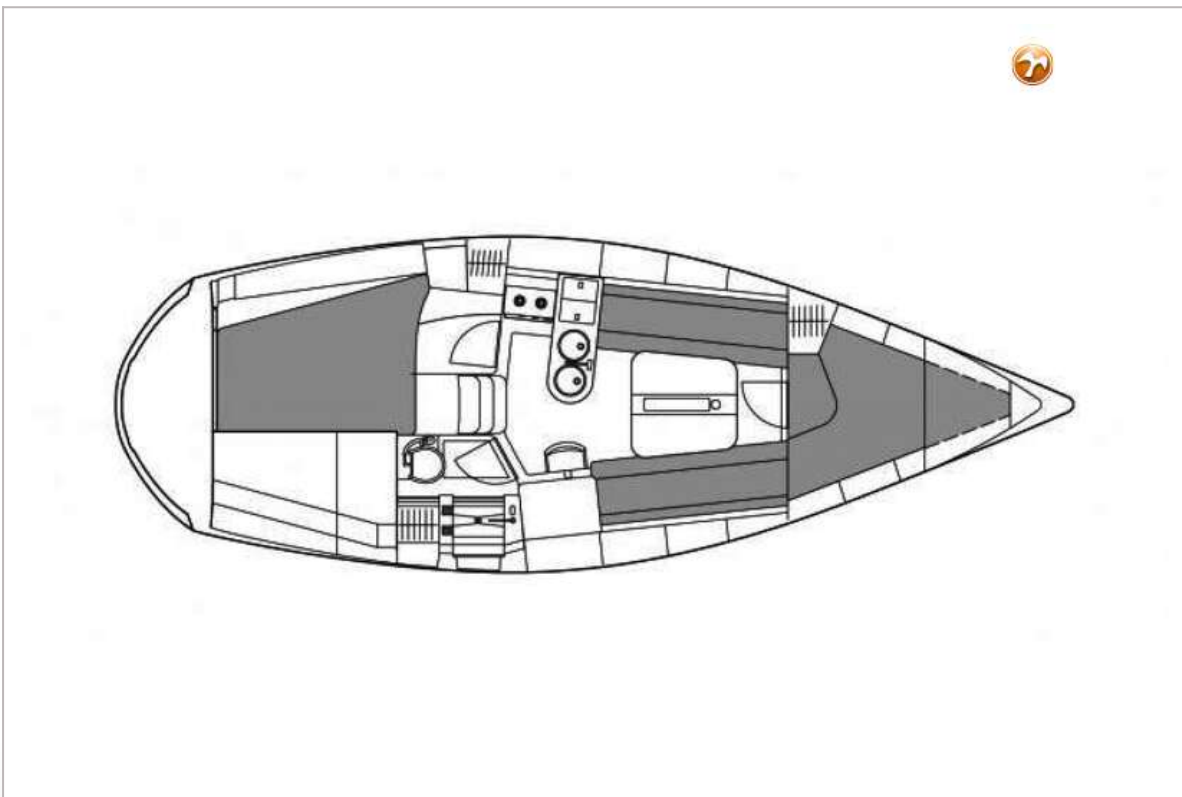
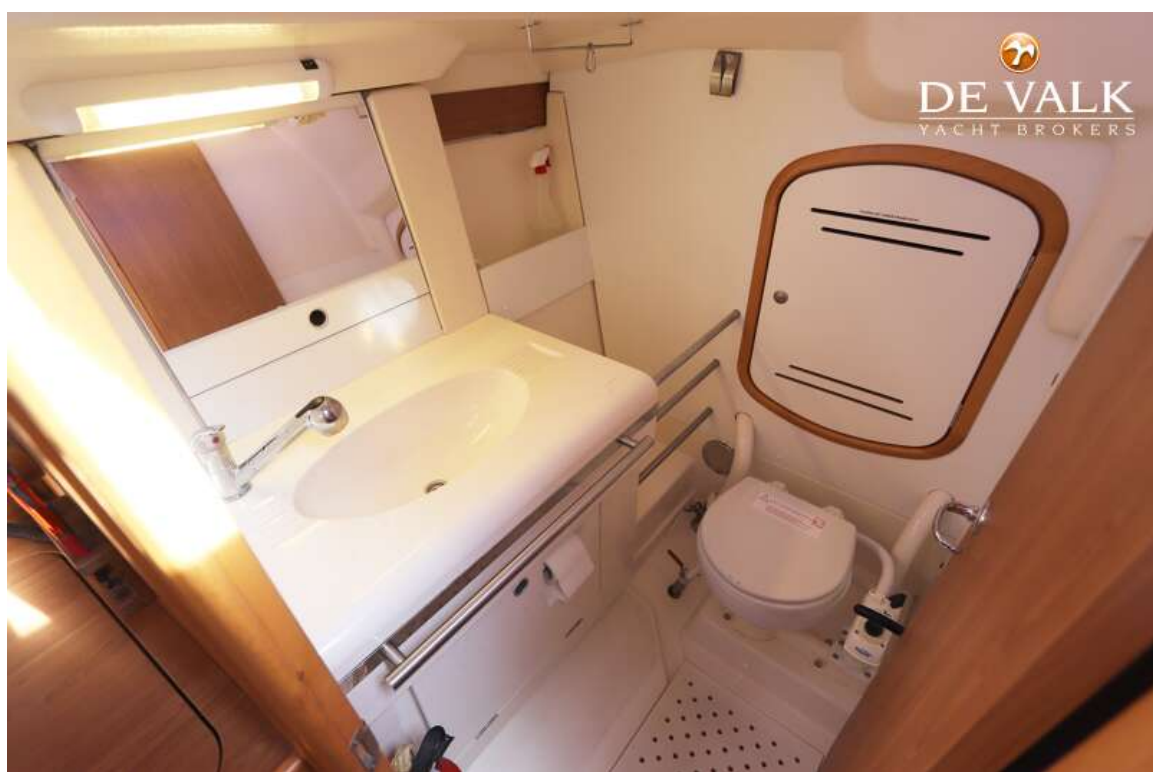






## ETAP 32S







## FREQUENTLY ASKED QUESTIONS



### What is the reason for selling your yacht?

*I have to stop sailing due to health problems.*

### How many owners has your yacht had and when?

*I am the first owner.*

### What can you tell about the history and cruising area of your yacht?

*Inland and coastal waters of the Netherlands and coastal Belgium, England, France and Baltic sea.*

### Why did you choose for this yacht when you bought it?

*My previous yacht were also Etap, and I liked those very much. Good sailing properties combined with seaworthiness, single handling properties, dry cockpit and due to the double wall very good insulation and absence of condensation. So very comfortable also in colder conditions.*

### What is the special meaning of the name of the yacht for you?

*Ribaldus: is Latin and corresponds with rascal, drifter and vagabond..*

### Has your yacht ever been used for charter? And if so, when?

*No.*

### What can you tell about the sailing characteristics of your yacht?

*Good cruising qualities, stable in rough sea but also suitable for shallow (inland) waters.*

### What did you do with your yacht during the winter?

*First 10 years in a warmed hall, thereafter in a well shielded canal port.*

### What kind of maintenance or renewals have been carried out (with documentation as prove)?

*See specification list.*

### What are, according to you, future points of attention with regard to the maintenance of your yacht?

*Renewal of anodes of saildrive and propellor.*

### Which four keywords would you use to describe your yacht?

*Comfortable / single handling properties / well equipped / seaworthy.*





