



MOODY 44

## BROKER'S COMMENTS

Original classic ketch: MOODY 44 Carbineer built to the highest standards of the time, with a 3 cabins layout & spacious saloon that guarantee very comfortable cruising & living aboard . A recent survey report (including Rigging survey) is available to prospective buyers and shows no hull osmosis,'The engine was overhauled in 2014 and has 1400 hours since then. A family boat well worth buying & upgrading.

*Sofia Iliia-Salvanou*

## SPECIFICATIONS

<b>Dimensions</b>	12.34 x 3.68 x 1.83 (m)	<b>Builder</b>	A.H MOODY & Son Ltd
<b>Built</b>	1972	<b>Cabins</b>	3
<b>Material</b>	GRP	<b>Berths</b>	7
<b>Engine(s)</b>	1 x Perkins diesel	<b>Hp/Kw</b>	120.00 (hp), 88.32 (kw)
<b>Asking price</b>	sold (VAT )	<b>Lying</b>	elsewhere / Not at sales office

## CONTACT

<b>Sales office</b>	De Valk Corfu	<b>Telephone</b>	(+30) 266 111 8095
<b>Address</b>	New Port of Corfu, near Gouvia Marina 490 83 Corfu GR	<b>E-mail</b>	corfu@devalk.nl

## DISCLAIMER

These particulars are given in good faith as supplied but cannot be guaranteed.



## GENERAL

Model	MOODY 44
Type	sailing yacht
LOA (m)	12,34
Beam (m)	3,68
Draft (m)	1,83
Year built	1972
Builder	A.H MOODY & Son Ltd
Country	United Kingdom
Designer	Jack Laurent Giles
Displacement (t)	13
Hull material	GRP
Hull colour	off-white
Keel type	long keel
Superstructure material	GRP Mahogany and
Deck material	GRP
Deck finish	non-skid moulded in
Cockpit deck finish	non-skid paint
Antifouling (year)	2019 (on the dry dock since then)
Dorades	yes
Window frame	aluminium
Window material	glass
Deckhatch	yes
Portholes	yes
Insulation	yes
Fuel tank (litre)	stainless steel 450
Freshwater tank (litre)	550
Blackwater tank (litre)	60
Blackwater tank extraction	pump
Wheel steering	yes
Inside helm position	yes



Outside helm position yes

## ACCOMMODATION

Cabins	3
Berths	7
Interior	teak
Layout	yes
Floor	teak
Saloon	yes
Navigation center	yes
Dinette	yes
Opening door to cockpit	yes
Galley	yes
Countertop	yes
Sink	yes
Cooker	yes
Fridge	yes
Hot water system	yes
Crockery	yes
Owners cabin	twin single
Wardrobe	yes
Bathroom	en suite
Toilet	en suite
Toilet system	manual
Wash basin	in the bathroom
Shower	en suite
Guest cabin 1	twin single
Wardrobe	yes
Bathroom	separate
Toilet	separate
Toilet system	manual



Wash basin	in the bathroom
Shower	separate
Guest cabin 2	v-bed
Wardrobe	yes
Bathroom	separate
Toilet	separate
Toilet system	manual
Wash basin	in the bathroom
Shower	separate

## MACHINERY

No of engines	1
Make	Perkins
HP	120
kW	88.32
Fuel	diesel
Year installed	1984
Year of overhaul	2014
Engine hours	1400
Drive	shaft
Shaft seal	yes
Bowthruster	yes
Gearbox	yes
Propeller type	fixed
Electric bilge pump	yes
Generator	yes
Batteries	yes
Start battery	yes
Service battery	yes
Battery charger	yes
Solar panel	yes



Shorepower	yes
------------	-----

## NAVIGATION

Compass	yes
Depth sounder	yes
VHF	yes
Autopilot	yes
Plotter/GPS	yes
Navigation lights	yes

## EQUIPMENT

Fixed windscreen	yes
Sun awning	yes
Cockpit cushions	yes
Cockpit table	yes
Boarding ladder	yes
Gangway	INOX/teak
Anchor	yes
Anchor chain	yes
Windlass	yes
Davits	Inox
Sea railing	yes
Life raft	yes
Lifejackets	yes
Mooring lines	yes
Fire extinguisher	yes

## RIGGING

Rigging	Replaced 2019
Material mast	aluminium



<b>Spreaders</b>	yes
<b>Keel stepped mast</b>	yes
<b>Mainsail</b>	Furling in mast
<b>Mizzen</b>	yes
<b>Jib</b>	Furling
<b>Halyard winches</b>	yes





# MOODY 44



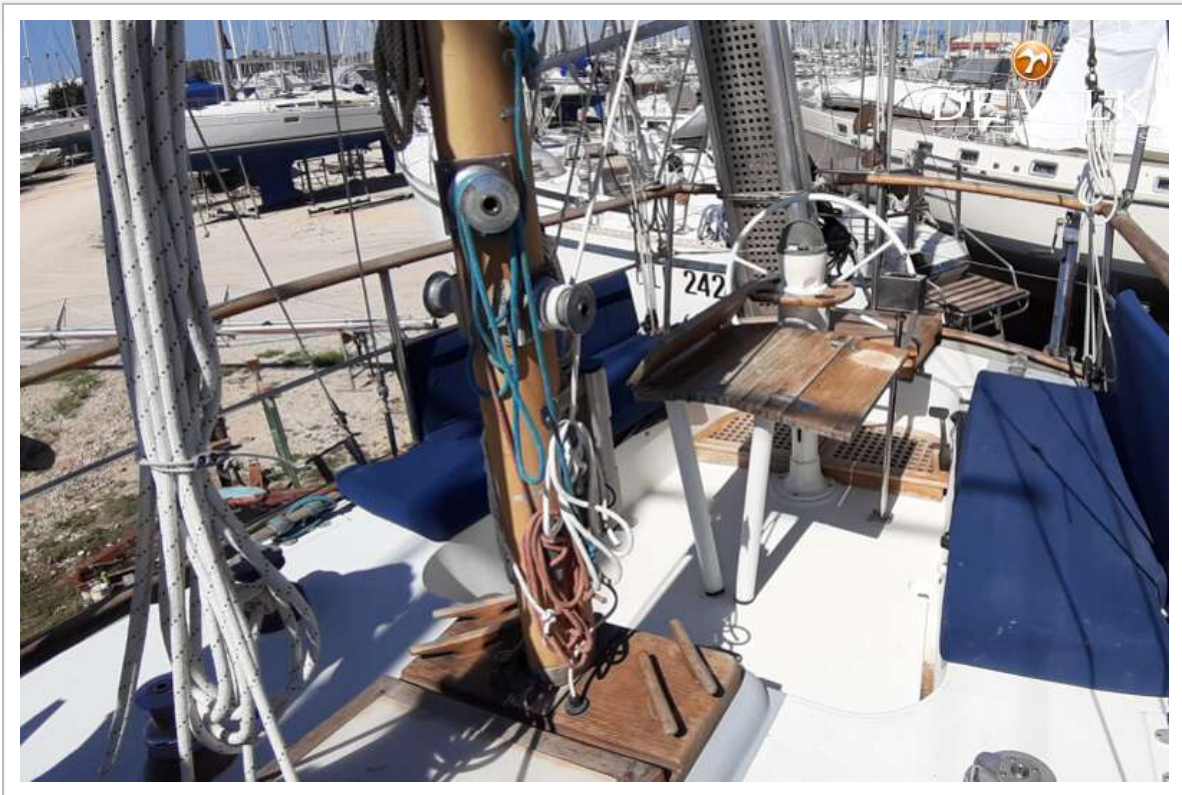


# MOODY 44

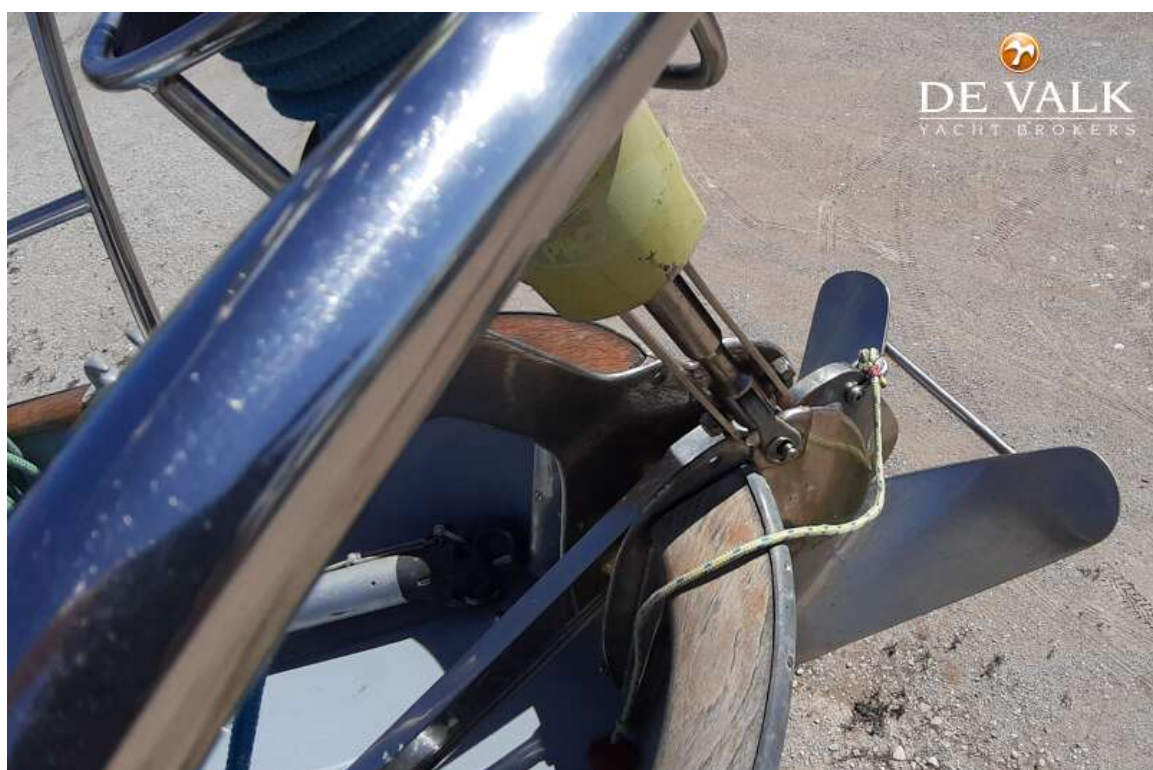




# MOODY 44

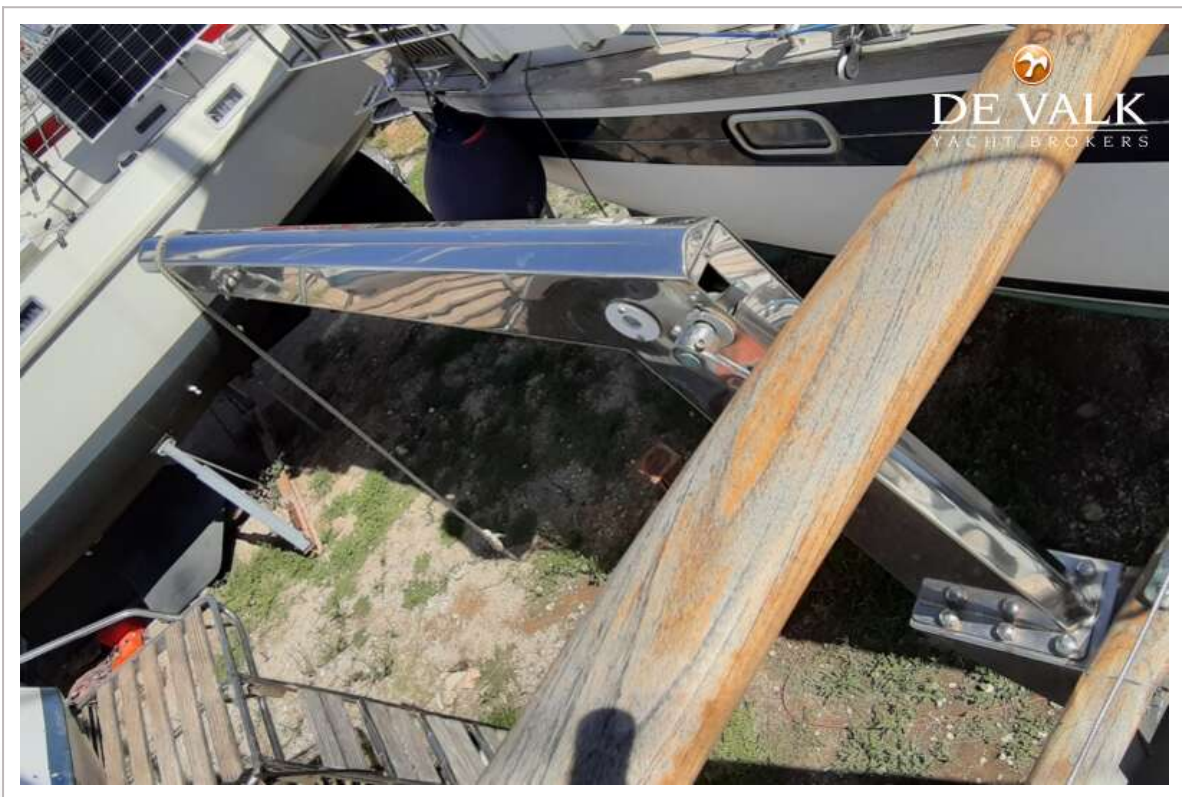
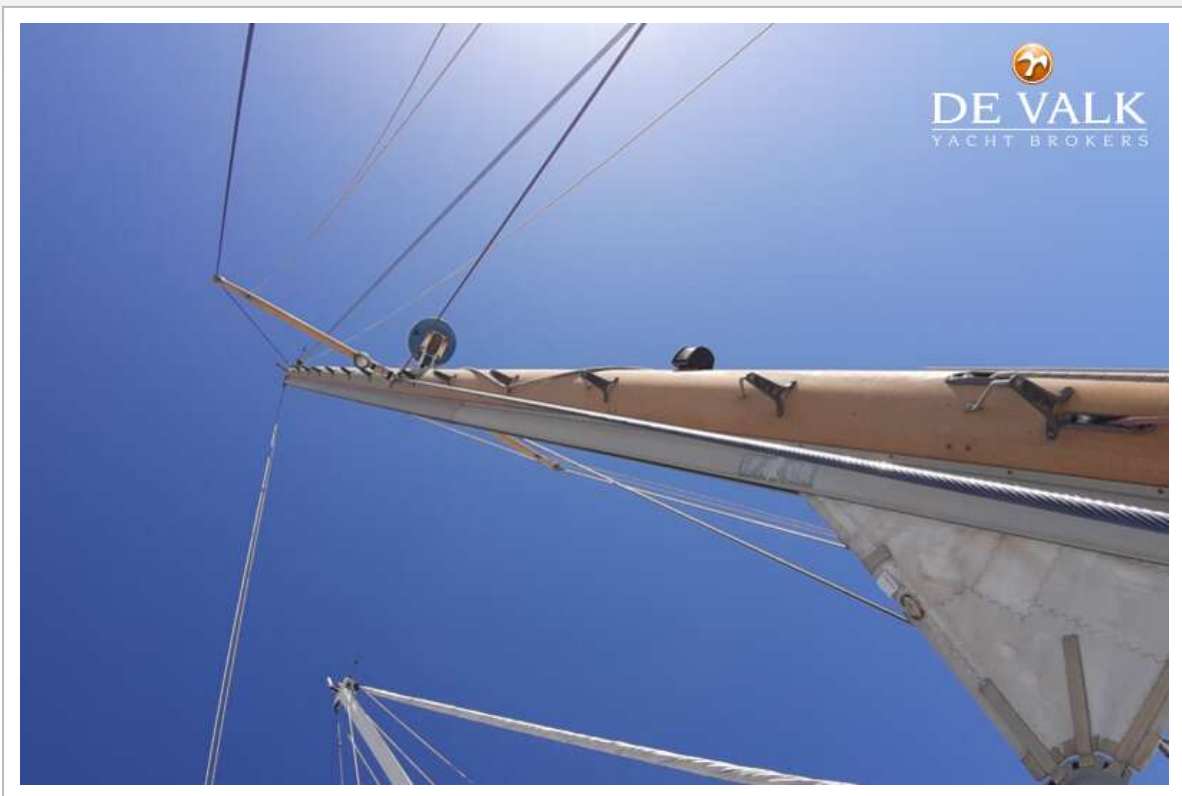


# MOODY 44

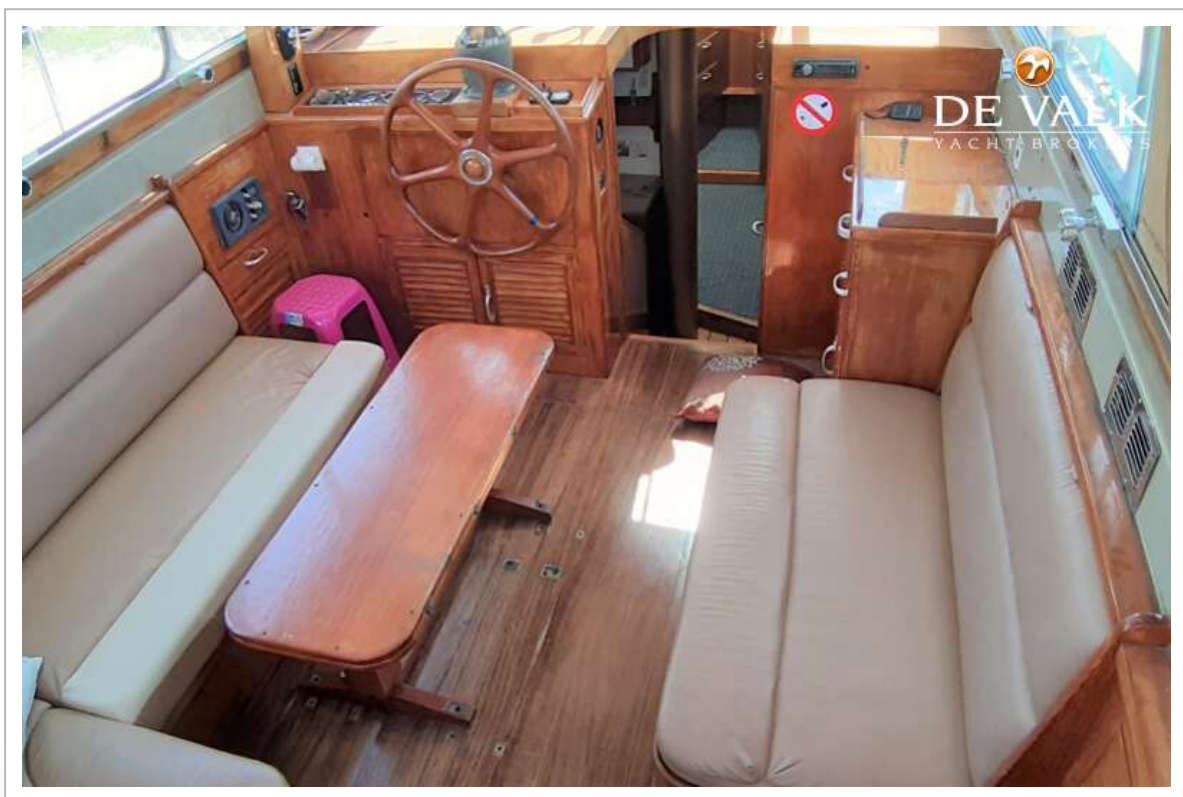




# MOODY 44

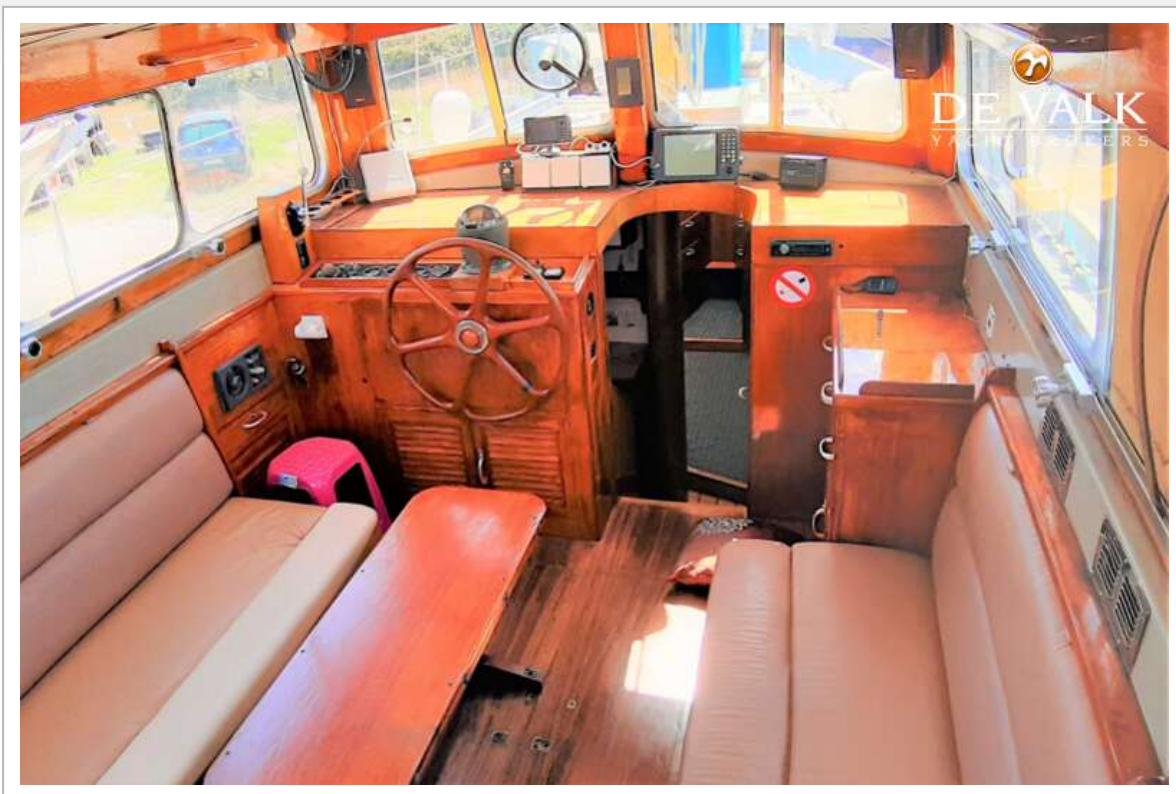


# MOODY 44

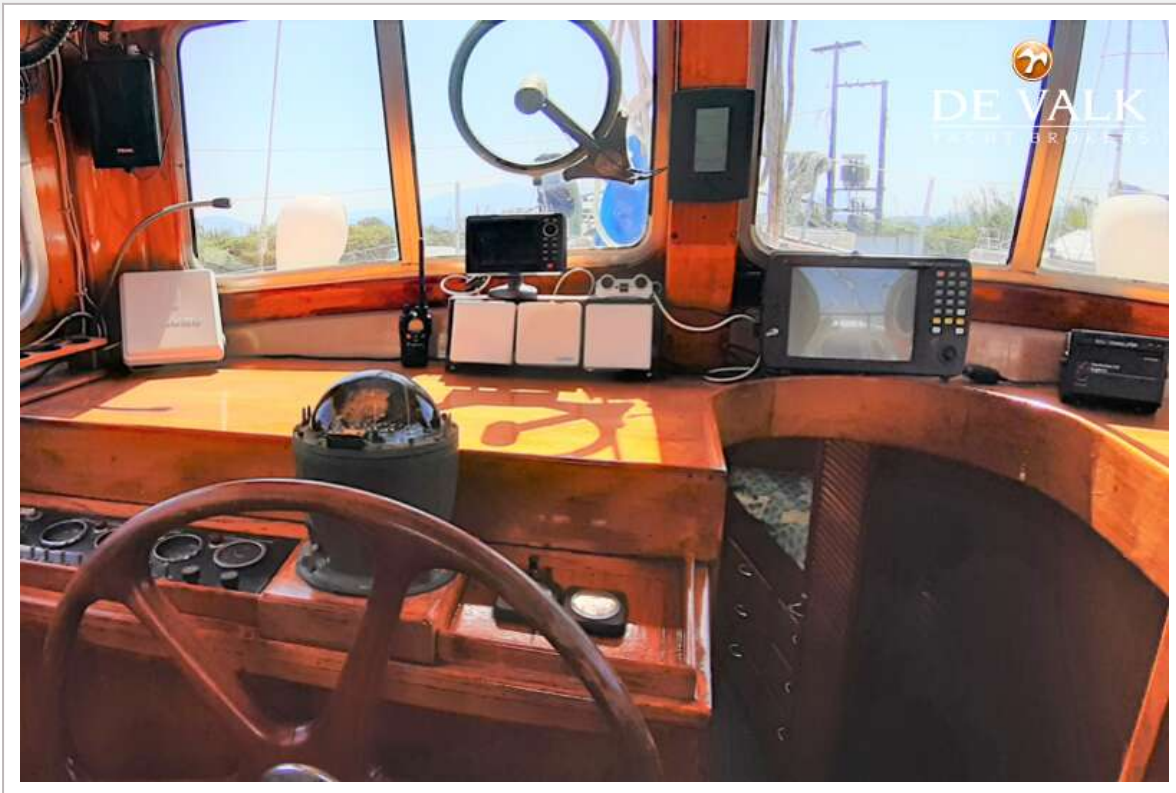




# MOODY 44



# MOODY 44





# MOODY 44



# MOODY 44

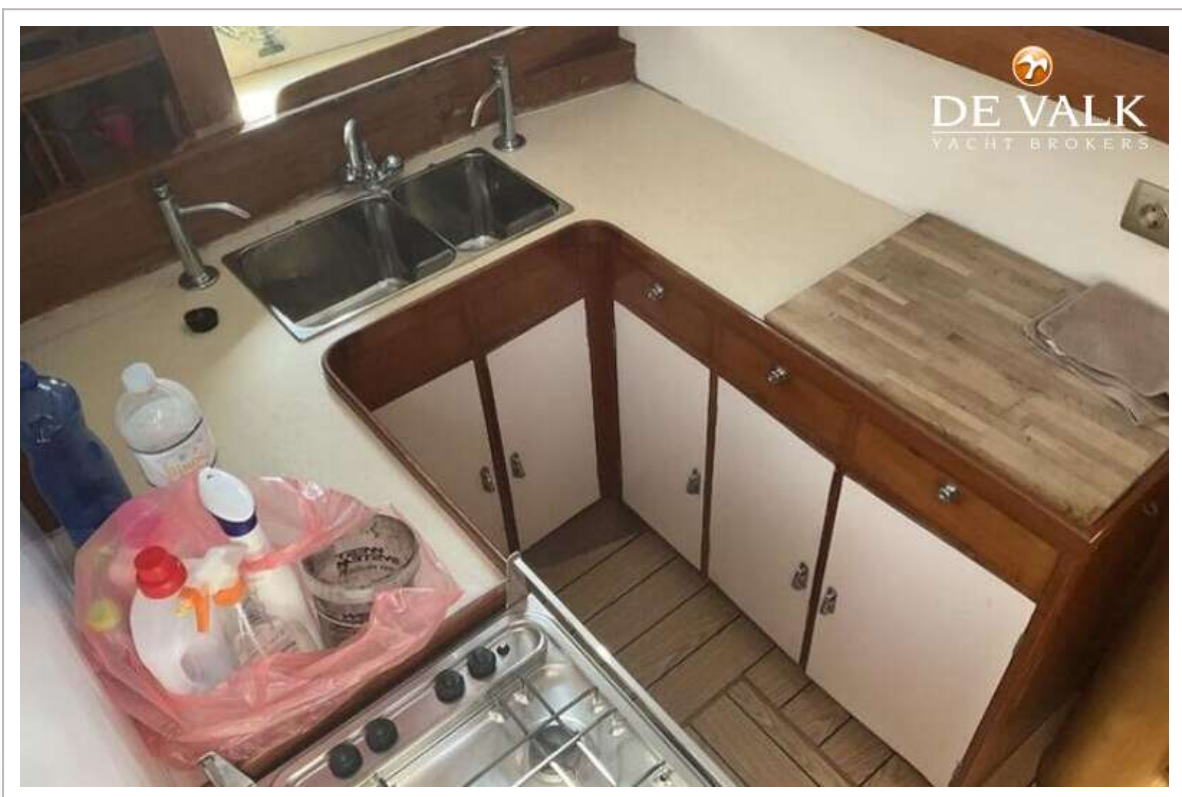




# MOODY 44

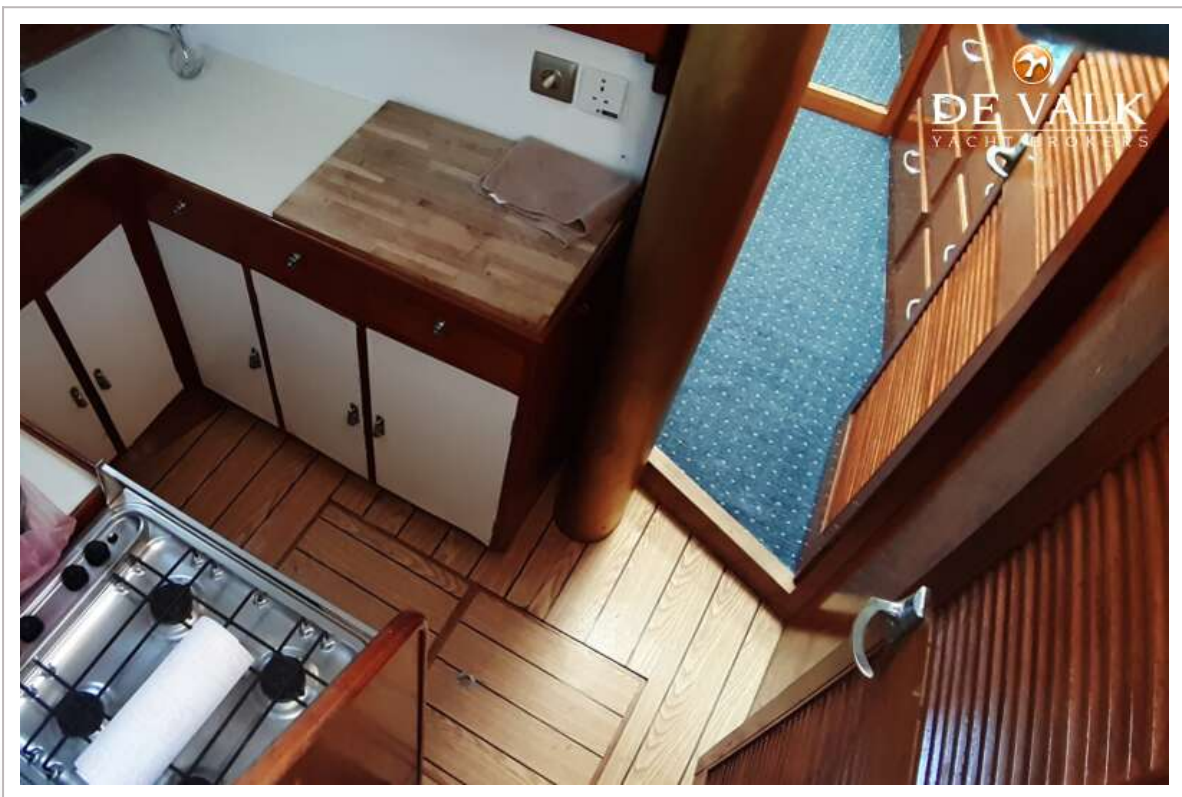
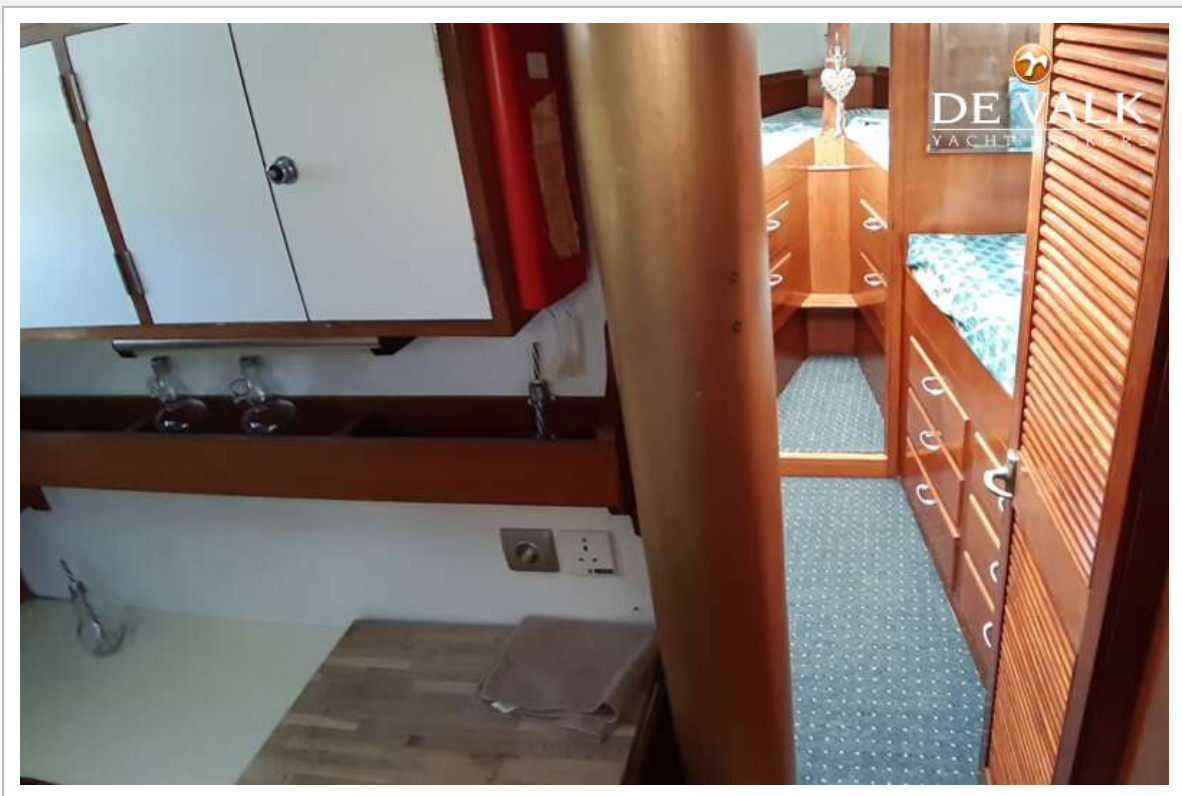


# MOODY 44





# MOODY 44



# MOODY 44



# MOODY 44

