



DE VALK  
YACHT BROKERS

LUNA 66



DE VALK  
YACHT BROKERS

BROKERAGE | CHARTER | BERTHS | FINANCE | INSURANCE | YACHT MANAGEMENT

# LUNA 66

## BROKER'S COMMENTS

Luna 66' is a 2004 sailing yacht built to sail comfortably on long cruises. With Luna 66's unique lines you can enjoy sailing like never before. It has 9 beds in 5 cabins, 3 of them has a private bathroom. Interiors are made of Mahogany, Maple and italian Frau Leather.

*Valerio Biondi*

## SPECIFICATIONS

<b>Dimensions</b>	19.75 x 5.20 x 3.20 (m)	<b>Builder</b>	Azzurra yachting, Navarcantieri, Carlin
<b>Built</b>	2004	<b>Cabins</b>	5
<b>Material</b>	Composite	<b>Berths</b>	9
<b>Engine(s)</b>	1 x Yanmar 4lha-hte diesel	<b>Hp/Kw</b>	150.00 (hp), 110.40 (kw)
<b>Asking price</b>	€ 450.000 (VAT Paid)	<b>Lying</b>	

## CONTACT

<b>Sales office</b>	De Valk Antibes	<b>Telephone</b>	+33 492 91 0202
<b>Address</b>	2, Avenue de Verdun 06600 Antibes FR	<b>E-mail</b>	antibes@devalk.nl

## DISCLAIMER

These particulars are given in good faith as supplied but cannot be guaranteed.



## GENERAL

Model	LUNA 66
Type	sailing yacht
LOA (m)	19,75
Beam (m)	5,20
Draft (m)	3,20
Year built	2004
Builder	Azzurra yachting, Navarcantieri, Carlin
Country	Italy
Designer	Starkel
Displacement (t)	35
Hull material	composite
Hull colour	white
Deck material	PRFV
Deck finish	teak
Cockpit deck finish	teak + gelcoat
Fuel tank (litre)	600
Freshwater tank (litre)	900
Wheel steering	Lowmar racing

## ACCOMMODATION

Cabins	5
Berths	9
Crew cabin	2
Interior	mahogany
Floor	teak Maple wood
Deck saloon	With view 270 degrees
Air-conditioning	Condaria 30.000 btu
Galley	yes
Sink	yes
Cooker	yes



Oven	yes
Extractor	yes
Microwave	yes
Fridge	yes
Freezer	yes
Hot water system	yes
Water pressure system	yes
Owners cabin	French bed
Bed length (m)	2,1m
Bathroom	yes
Toilet	yes
Toilet system	electric
Wash basin	yes
Shower	yes
Guest cabin 1	yes
Bed length (m)	2,1m
Wardrobe	yes
Bathroom	yes
Toilet	yes
Toilet system	electric
Wash basin	yes
Shower	yes
Guest cabin 2	yes
Crew cabin(s)	yes
Bathroom (crew)	yes
Toilet (crew)	yes
Toilet system	electric
Wash basin	yes
Shower (crew)	yes
Washing machine	yes
Dryer	yes



## MACHINERY

No of engines	1
Make	Yanmar
Type	4lha-hte
HP	150
kW	110.40
Fuel	diesel
Year installed	2004
Year of overhaul	2004
Maximum speed (kn)	12
Cruising speed (kn)	9
Consumption (l/hr)	16
Range (nm)	400
Engine hours	4000
Engine controls	manual
Gearbox	Hurth HSW 450 A3
Bowthruster	Not in use
Propeller type	Gori 35mm
Propeller blades	3
Propeller shaft material	stainless steel
Service battery	250Ah 24v in use
Battery charger	1x12v; 1x24v mastervolt
Inverter	Mastervolt 750w
Shorepower	yes
Watermaker	Onboard, not in use

## NAVIGATION

Compass	yes
Depth sounder	yes
VHF	yes
Autopilot	yes



Radar	Raymarine
Plotter/GPS	yes
EPIRB	yes

## EQUIPMENT

Sprayhood	yes
Cockpit table	yes
Bathing platform	yes
Anchor	yes
Anchor chain	yes
Windlass	yes
Dinghy	yes
Outboard	yes
Fenders	yes
Mooring lines	yes
Radio	yes
Surround Sound System	yes
Speakers in salon	yes
Speakers in cabin	yes

## RIGGING

Material mast	aluminium
Mainsail	Dacron
Fully battened mainsail	yes
Genoa	yes
Gennaker	yes
Primary sheet winch	4 electric
Multifunctional winches	yes





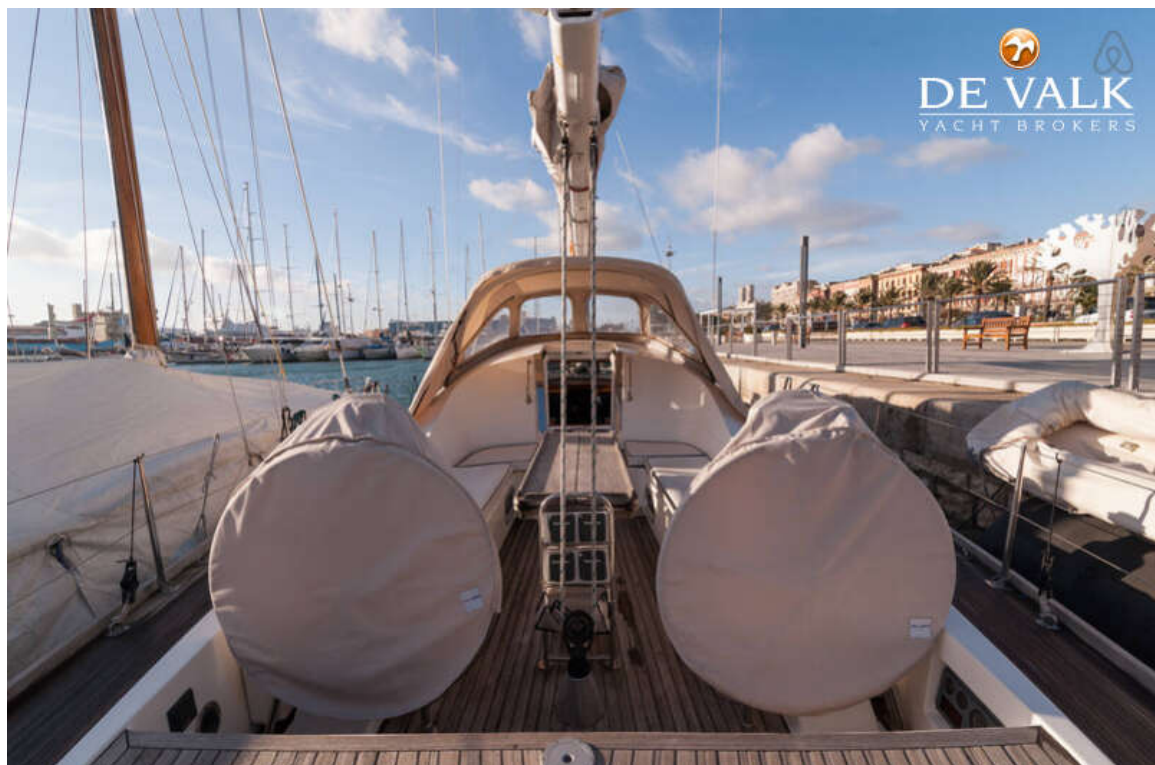
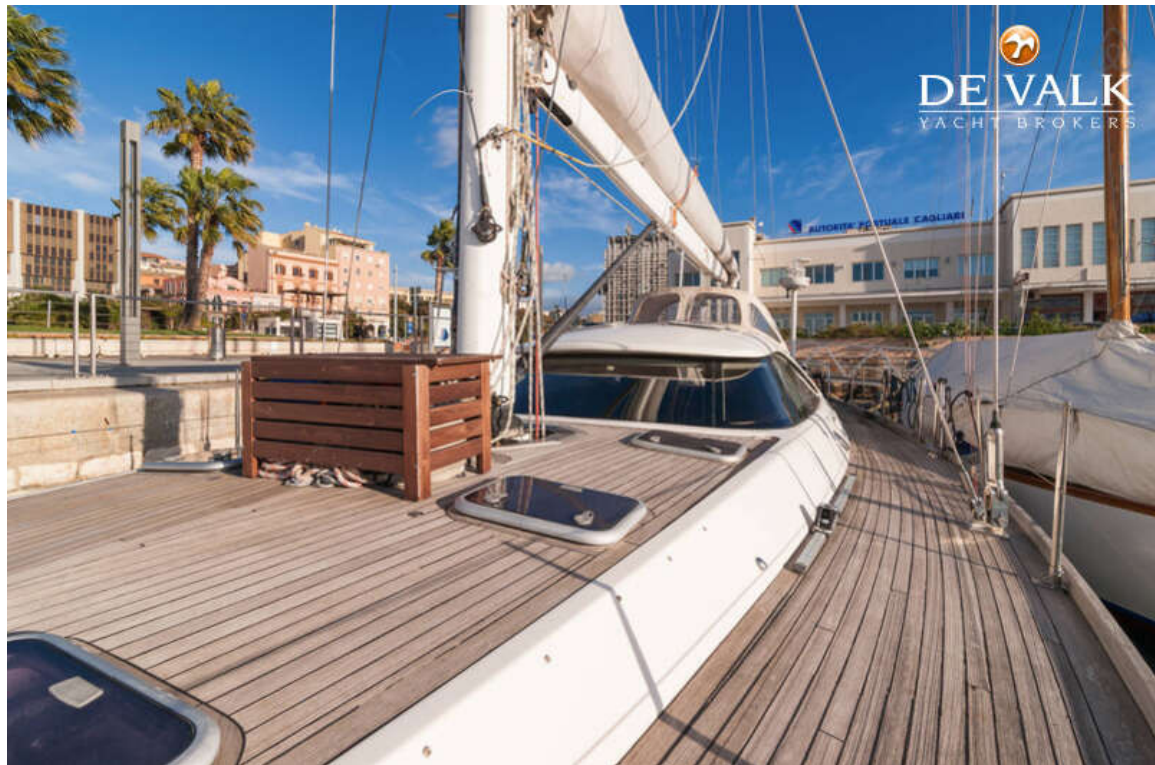




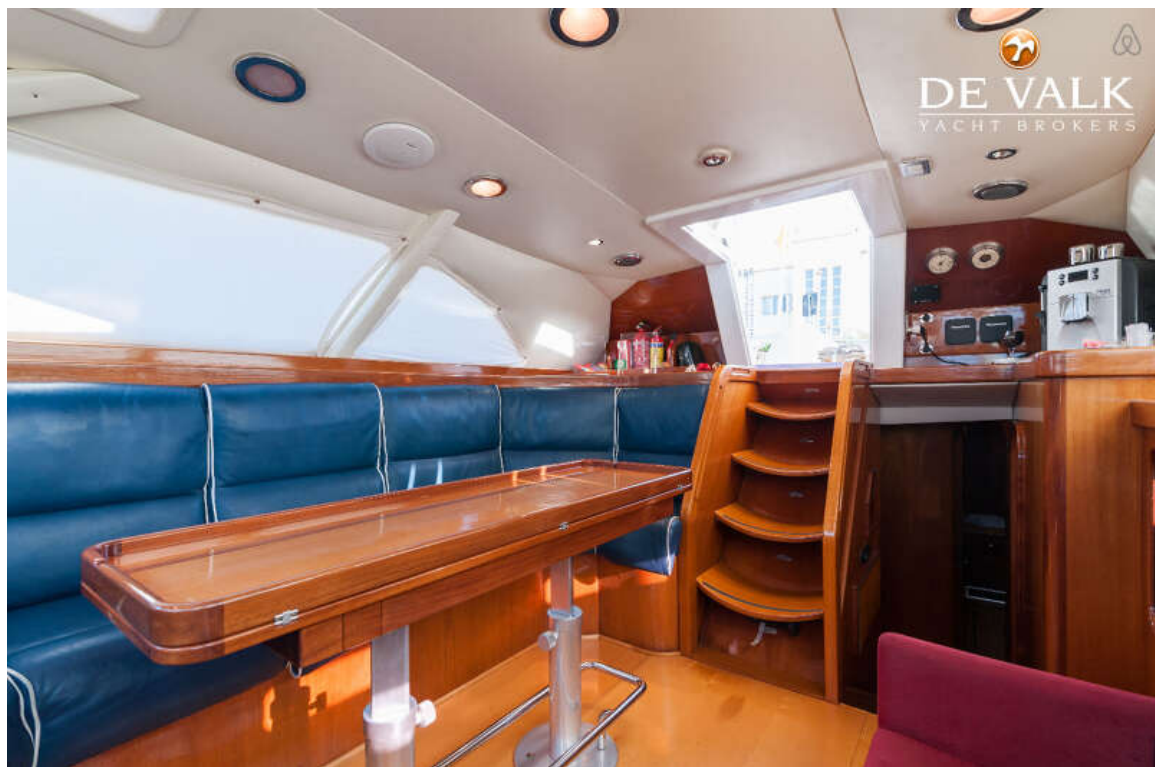
# LUNA 66



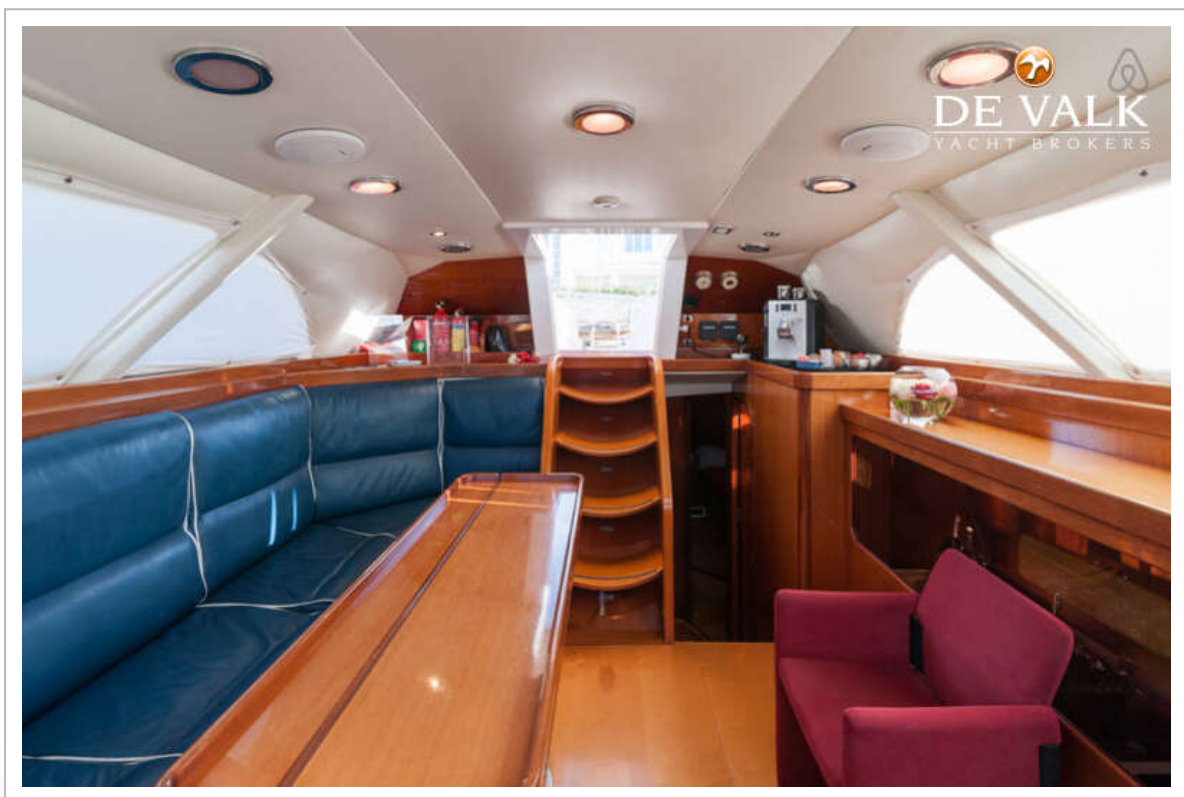
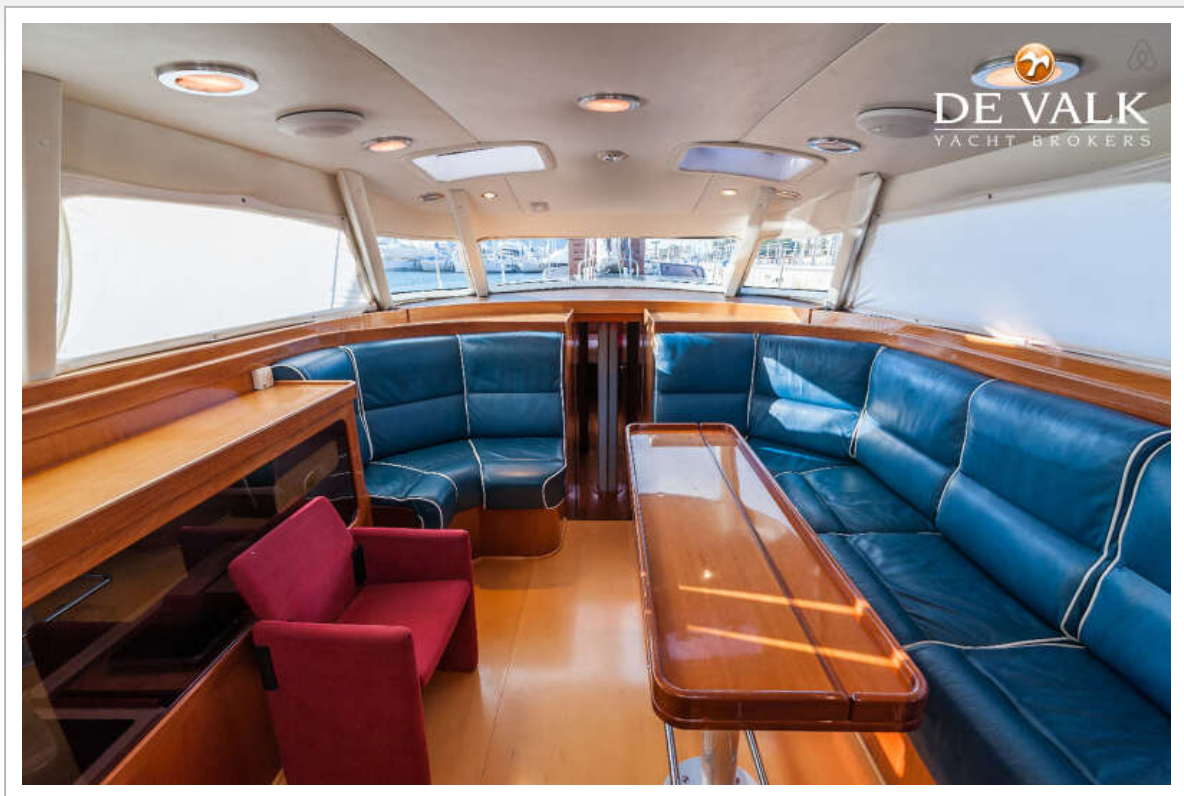
# LUNA 66



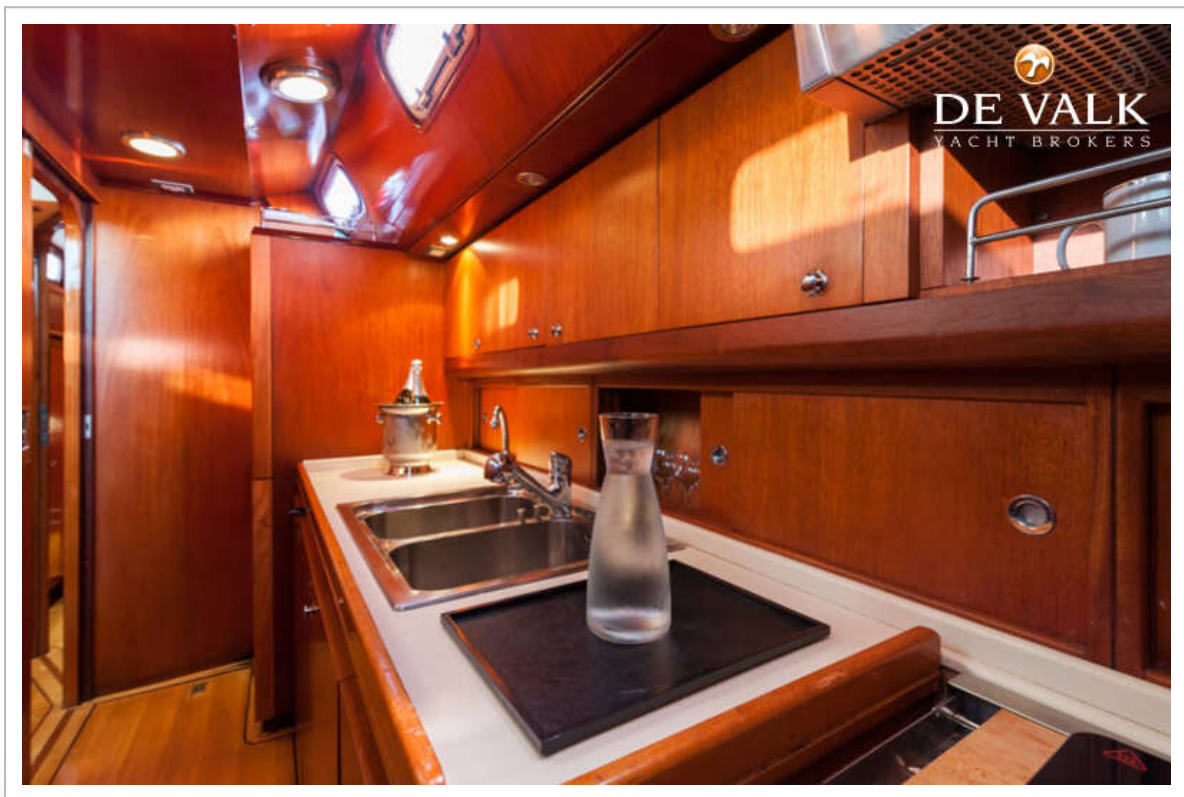
# LUNA 66



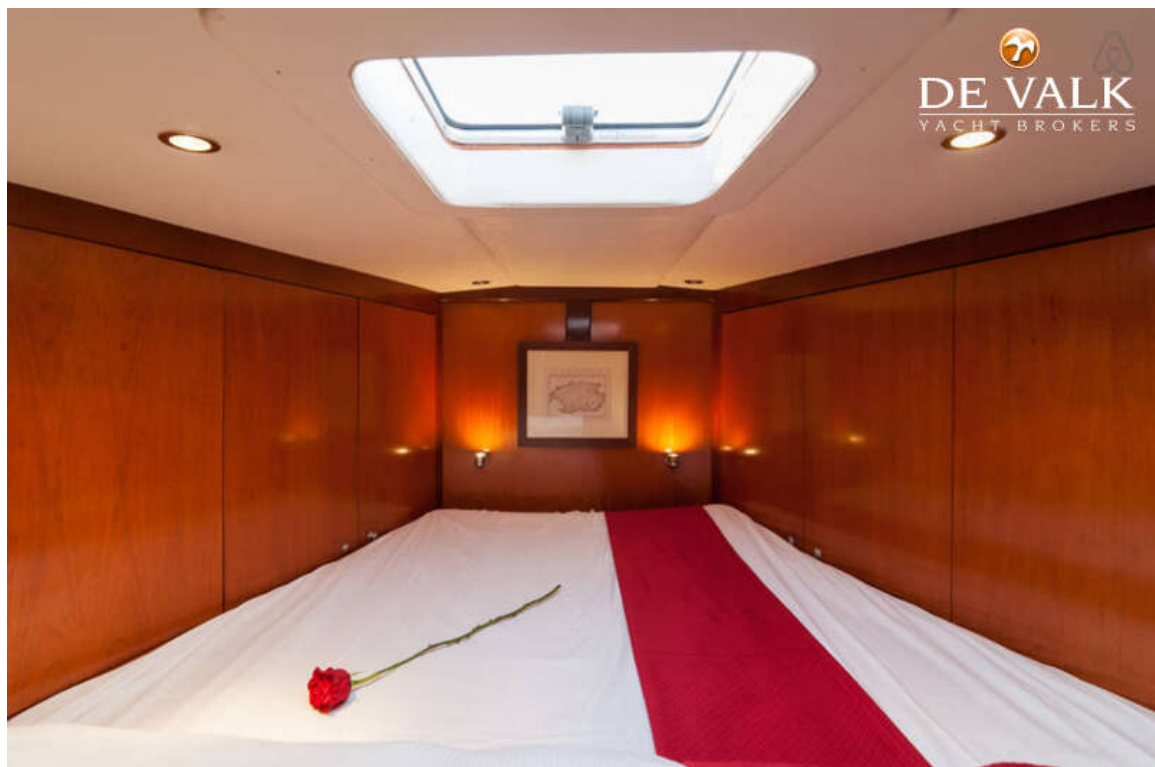
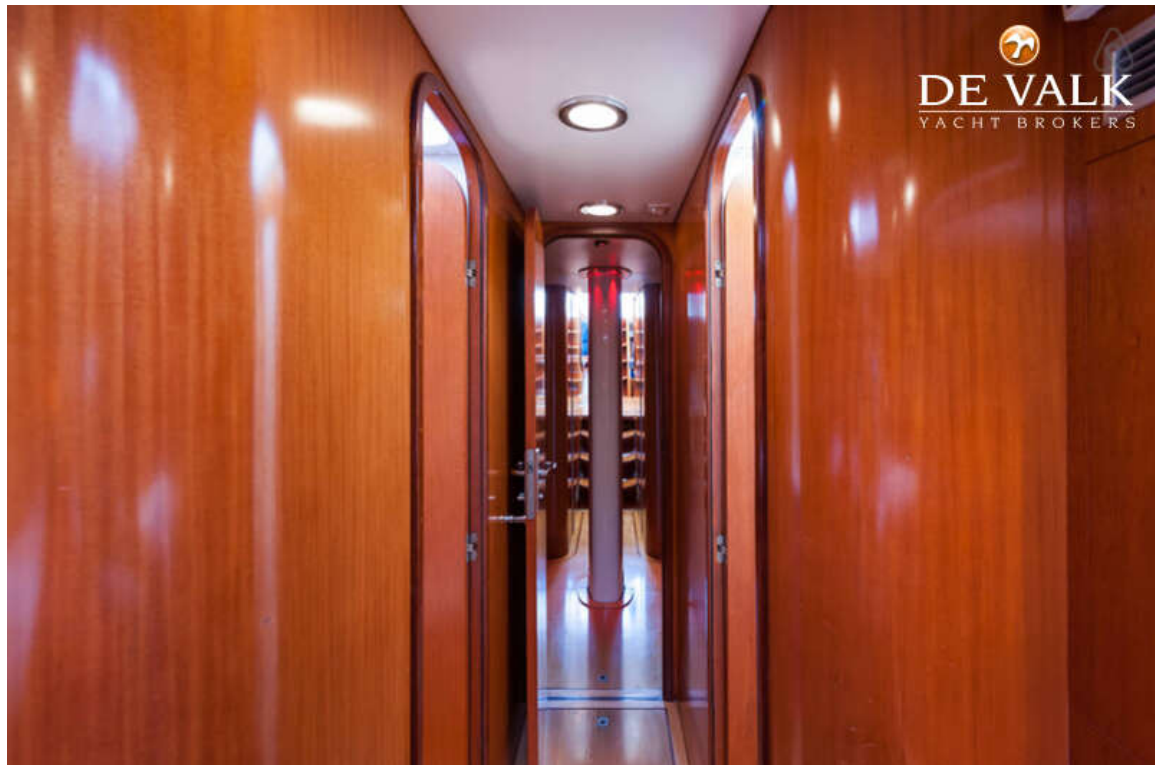
# LUNA 66



# LUNA 66

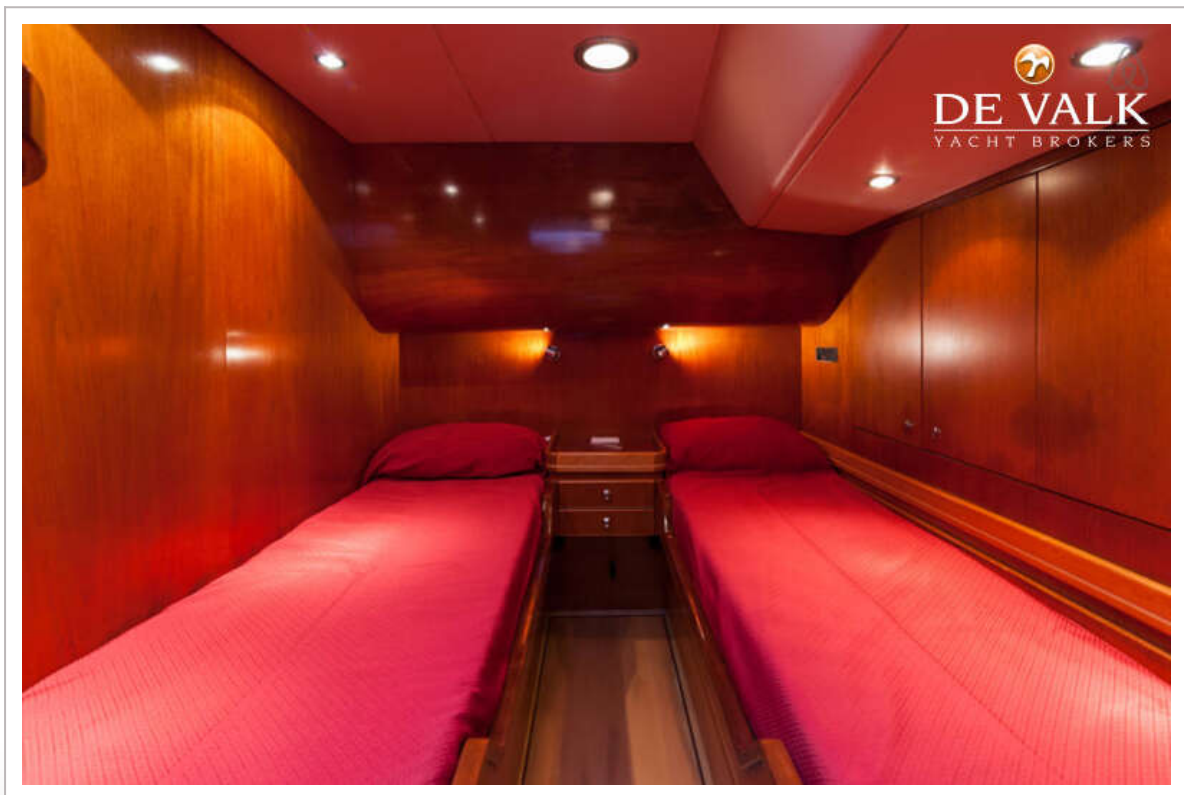


# LUNA 66

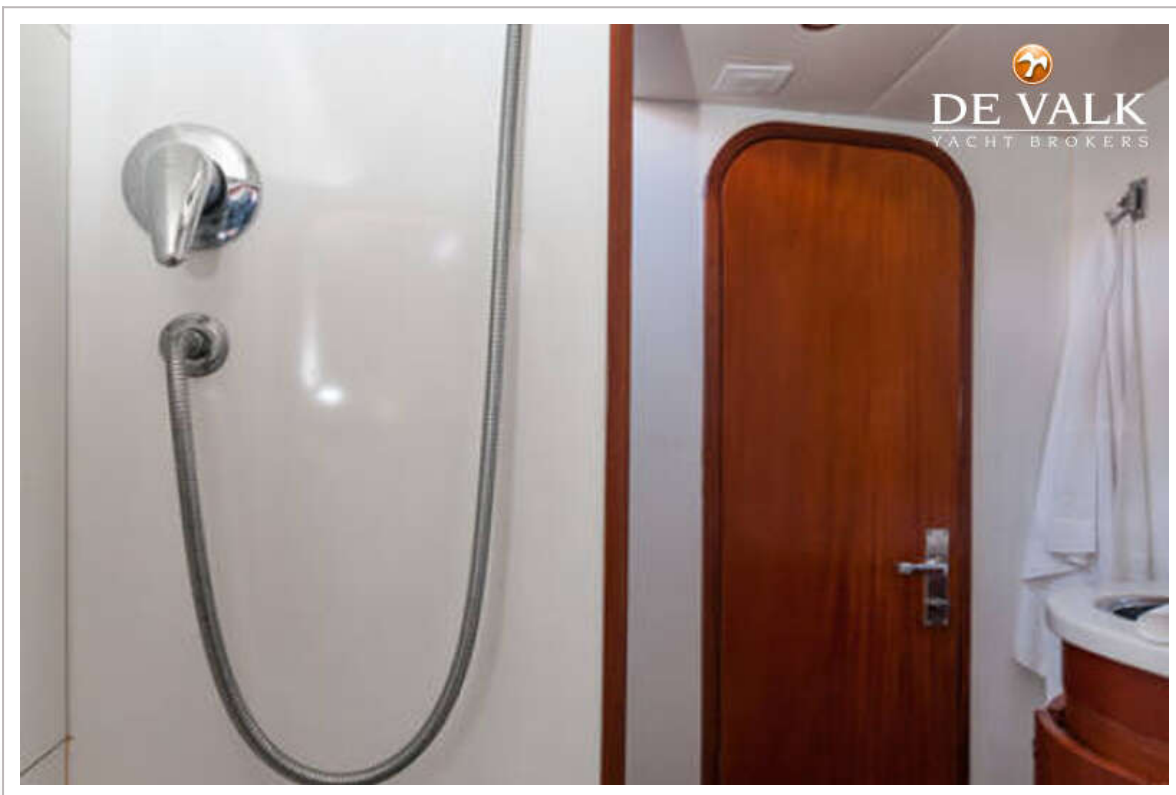
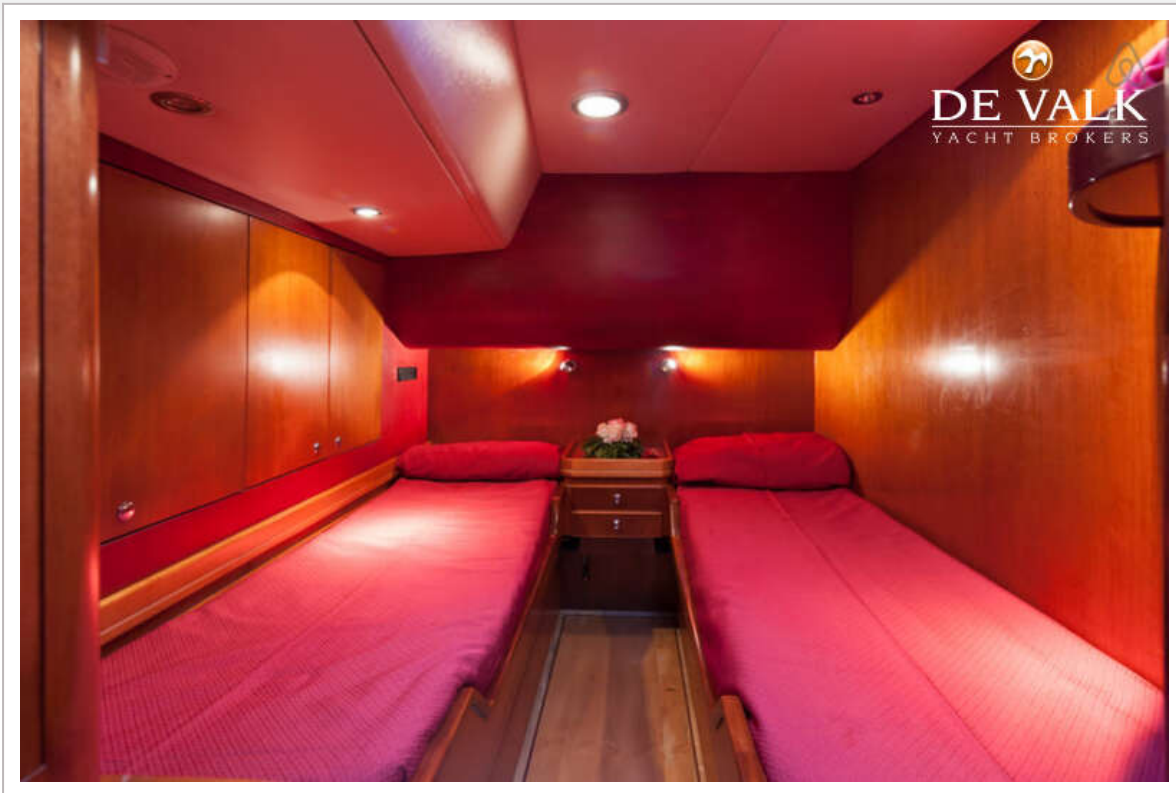




# LUNA 66



# LUNA 66



# LUNA 66

