



DE VALK  
YACHT BROKERS



## GALEON 380 FLY



DE VALK  
YACHT BROKERS

# GALEON 380 FLY

## BROKER'S COMMENTS

Built by the experienced (est. 1982!) and well appreciated Galeon Boatyard, the Galeon 380 Fly was a success upon introduction. Contemporary styling, solid construction and a real fun motor yacht to own. With her aft situated engines, the ride is comfortable and sporty. With the added bonus of lower engine noise. This 380 is equipped with the 2 x 260hp diesels adding a lot of performance and handling. Molded comfortable stairs to the flybridge and wide side decks for her overall length. She received extra upgrades and complete winter maintenance. Viewing on appointment.

*Marc Weijenberg*

## SPECIFICATIONS

<b>Dimensions</b>	11.49 x 3.73 x 0.72 (m)	<b>Builder</b>	PPHJ Galeon
<b>Built</b>	2004	<b>Cabins</b>	2
<b>Material</b>	GRP	<b>Berths</b>	6
<b>Engine(s)</b>	2 x Volvo Penta KAD44 DP diesel	<b>Hp/Kw</b>	2 x 260.00 (hp), 191.36 (kw)
<b>Asking price</b>	sold (VAT )	<b>Lying</b>	elsewhere / Not at sales office

## CONTACT

<b>Sales office</b>	De Valk Thuishaven	<b>Telephone</b>	+31 35 5829042
<b>Address</b>	Marinaweg 8 (postal address) 1361 AC Almere NL	<b>E-mail</b>	thuishaven@devalk.nl

## DISCLAIMER

These particulars are given in good faith as supplied but cannot be guaranteed.



# GALEON 380 FLY

## GENERAL

<b>Model</b>	GALEON 380 FLY
<b>Type</b>	motor yacht
<b>LOA (m)</b>	11,49
<b>Beam (m)</b>	3,73
<b>Draft (m)</b>	0,72
<b>Air draft (m)</b>	3,75
<b>Headroom (m)</b>	1,98
<b>Year built</b>	2004
<b>Builder</b>	PPHJ Galeon
<b>Country</b>	Poland
<b>Designer</b>	PPHJ Galeon Poland
<b>Displacement (t)</b>	9
<b>CE norm</b>	B
<b>Hull material</b>	GRP
<b>Hull colour</b>	white
<b>Hull shape</b>	deep-V
<b>Superstructure material</b>	GRP
<b>Rubbing strake</b>	yes
<b>Deck material</b>	GRP
<b>Deck finish</b>	teak
<b>Cockpit deck finish</b>	teak
<b>Window frame</b>	stainless steel
<b>Window material</b>	tempered glass
<b>Deckhatch</b>	with fly-screen
<b>Portholes</b>	6 x
<b>Flybridge</b>	yes
<b>Radar arch</b>	collapsible
<b>Fuel tank (litre)</b>	stainless steel 950
<b>Freshwater tank (litre)</b>	stainless steel 500
<b>Blackwater tank (litre)</b>	stainless steel 150



# GALEON 380 FLY

<b>Blackwater tank extraction</b>	deck extraction + pump (pump 2021)
<b>Inside helm position</b>	hydraulic
<b>Outside helm position</b>	hydraulic
<b>Extra info</b>	Cover wheelsteering flybridge.

## ACCOMMODATION

<b>Cabins</b>	2
<b>Berths</b>	6
<b>Interior</b>	cherry
<b>Floor</b>	teak and holly Carpet
<b>Open cockpit</b>	yes
<b>Aft deck</b>	yes
<b>Pilot house/deck saloon</b>	with inside helmposition and L-shape settee
<b>Headroom saloon (m)</b>	1,98
<b>Heating</b>	diesel ducted hot air 2 x Eberspaecher D4 (2021 serviced)
<b>Dinette to convert into berth</b>	electrically operated
<b>Convertible berth</b>	2,00 x 0,90 mtr
<b>Sliding door to cockpit</b>	polished stainless
<b>Galley</b>	yes
<b>Countertop</b>	corian
<b>Sink</b>	stainless steel 2 x
<b>Cooker</b>	Steba 220v 2-burner
<b>Microwave</b>	yes
<b>Microwave/oven combi</b>	Sharp 220v (2022)
<b>Fridge</b>	with freezer compartment, Isotherm (12v, approx 80 ltr)
<b>Hot water system</b>	220V + engine
<b>Water pressure system</b>	yes
<b>Owners cabin</b>	double bed
<b>Bed length (m)</b>	headroom 1,82 mtr 2,00 x 1,70
<b>Wardrobe</b>	hanging/drawers/shelves
<b>Bathroom</b>	en suite



# GALEON 380 FLY

<b>Toilet</b>	en suite
<b>Toilet system</b>	electric Jabsco (12v)
<b>Wash basin</b>	in the bathroom
<b>Shower</b>	separate
<b>Guest cabin 1</b>	double bed
<b>Bed length (m)</b>	2,00 x 1,13
<b>Wardrobe</b>	hanging and shelves
<b>Extra info</b>	The main salon has a sliding cockpit door and two large sliding side windows for ample light and ventilation.
<b>Extra info</b>	Ownercabin has a custom comfy mattress fitted.

## MACHINERY

<b>No of engines</b>	2
<b>Make</b>	Volvo Penta
<b>Type</b>	KAD44 DP
<b>HP</b>	260
<b>kW</b>	191.36
<b>Fuel</b>	diesel
<b>Year installed</b>	2004
<b>Maximum speed (kn)</b>	32
<b>Cruising speed (kn)</b>	7
<b>Consumption (l/hr)</b>	10
<b>Engine hours</b>	1550
<b>Engine cooling system</b>	freshwater heat exchanger
<b>Drive</b>	Z-drive
<b>Engine controls</b>	electrical Volvo Penta EDC controllers
<b>Gearbox</b>	mechanical
<b>Bowthruster</b>	electric Sidepower SP95T (8hp)
<b>Exhaust</b>	watercooled
<b>Propeller type</b>	2 x Duoprop system
<b>Manual bilge pump</b>	1 x



# GALEON 380 FLY

<b>Electric bilge pump</b>	2 x (2022)
<b>Electrical installation</b>	12/220v
<b>Generator</b>	Fisher Panda 4500 3,7kW (in soundproofing box, wet exhaust)
<b>Running hours generator</b>	299
<b>Start battery</b>	2 x (2022)
<b>Service battery</b>	1 x (2022)
<b>Bowthruster battery</b>	1 x (2022)
<b>Battery charger</b>	Philipi Bordlader Pro
<b>Shorepower</b>	with cable
<b>Trimtabs</b>	Bennett
<b>Extra info</b>	Set of spare propellers, extra 220v sockets,

## NAVIGATION

<b>Compass</b>	yes
<b>Compass on flybridge</b>	yes
<b>Electric compass</b>	via autopilot
<b>Multi control display</b>	yes
<b>Depth sounder/log</b>	Raymarine ST60 Tridata + flybridge repeater
<b>VHF</b>	Simrad RS87
<b>Autopilot</b>	Simrad AP22 + flybridge controller
<b>Plotter/GPS</b>	Simrad NSE + Simrad CP33 on flybridge
<b>Electronic chart(s)</b>	yes
<b>Navigation lights</b>	yes
<b>Searchlight</b>	Jabsco

## EQUIPMENT

<b>Cockpit cover</b>	yes
<b>Bimini</b>	yes
<b>Cockpit cushions</b>	yes
<b>Bathing platform</b>	yes
<b>Boarding ladder</b>	stainless steel



# GALEON 380 FLY

Transom door	yes
Deck shower	hot+cold
Anchor	Bruce Stainless steel/rvs/Nirosta
Anchor chain	stainless steel 30 mtr
Windlass	Lofrans 1000 (12v)
Capstan	Lofrans 1000 (12v)
Sea railing	tube
Grab rail (superstructure)	stainless steel
Pulpit	stainless steel
Lifebuoy	1 x
Wiper	2 x
Horn	yes
Fenders	yes
Mooring lines	yes
TV	yes
Radio-cd player	yes
Clock - barometer	yes
Fire extinguisher	2 x (2022)



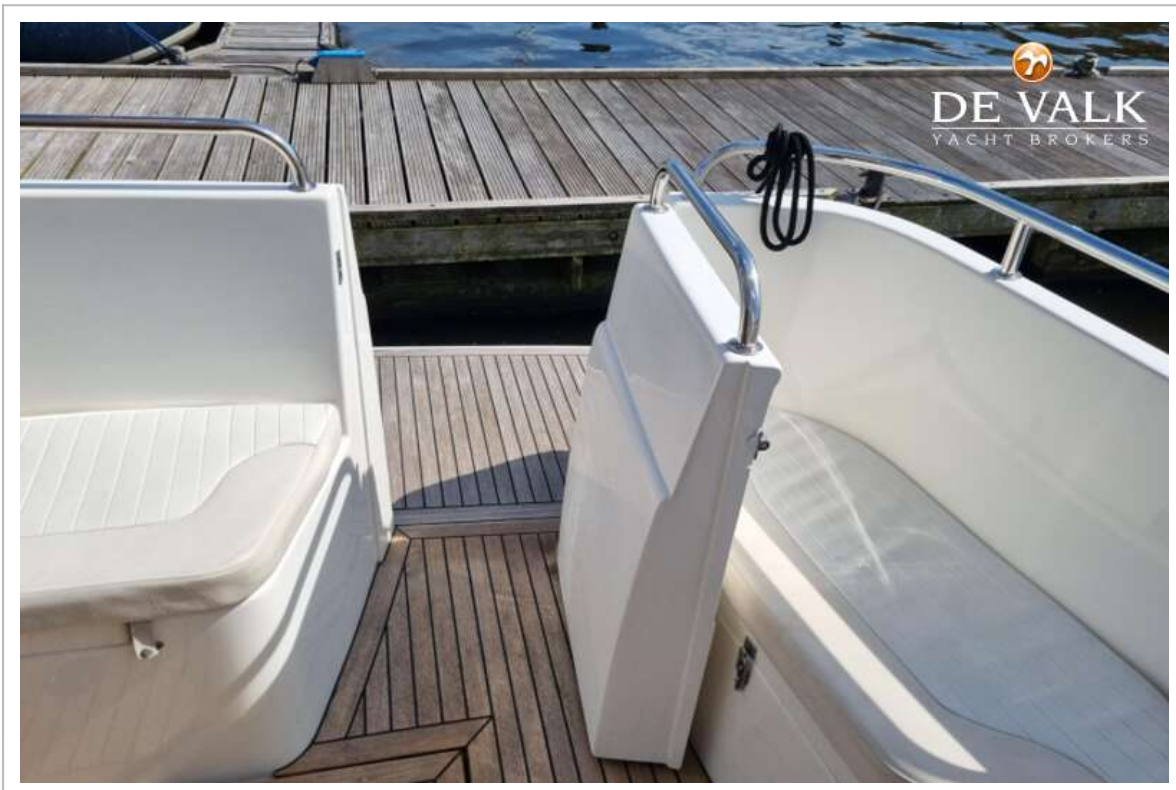
# GALEON 380 FLY



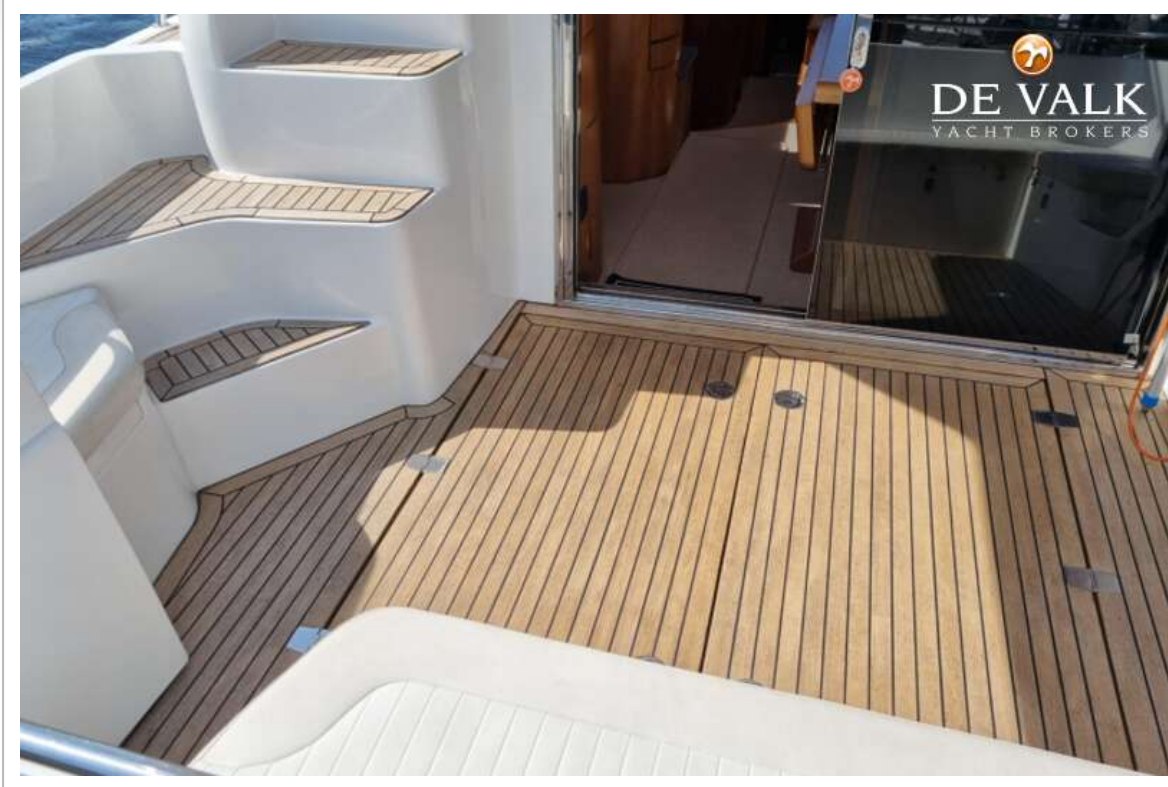
# GALEON 380 FLY



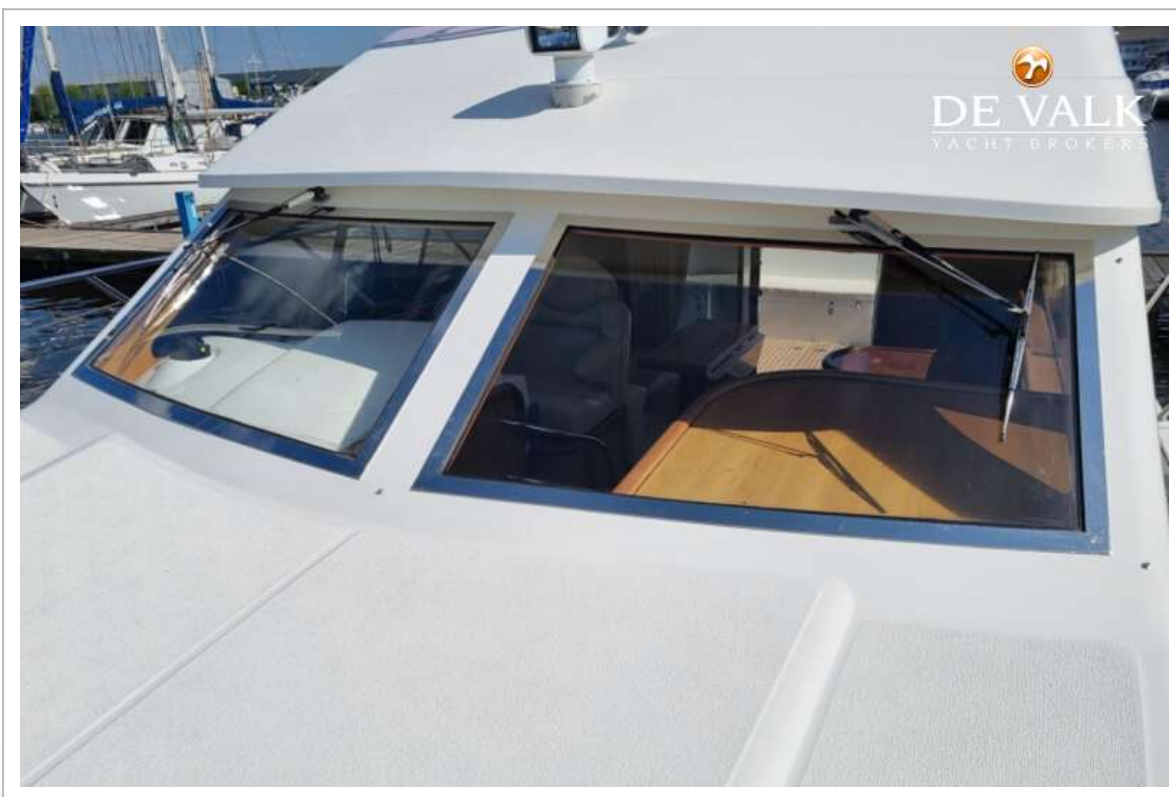
# GALEON 380 FLY



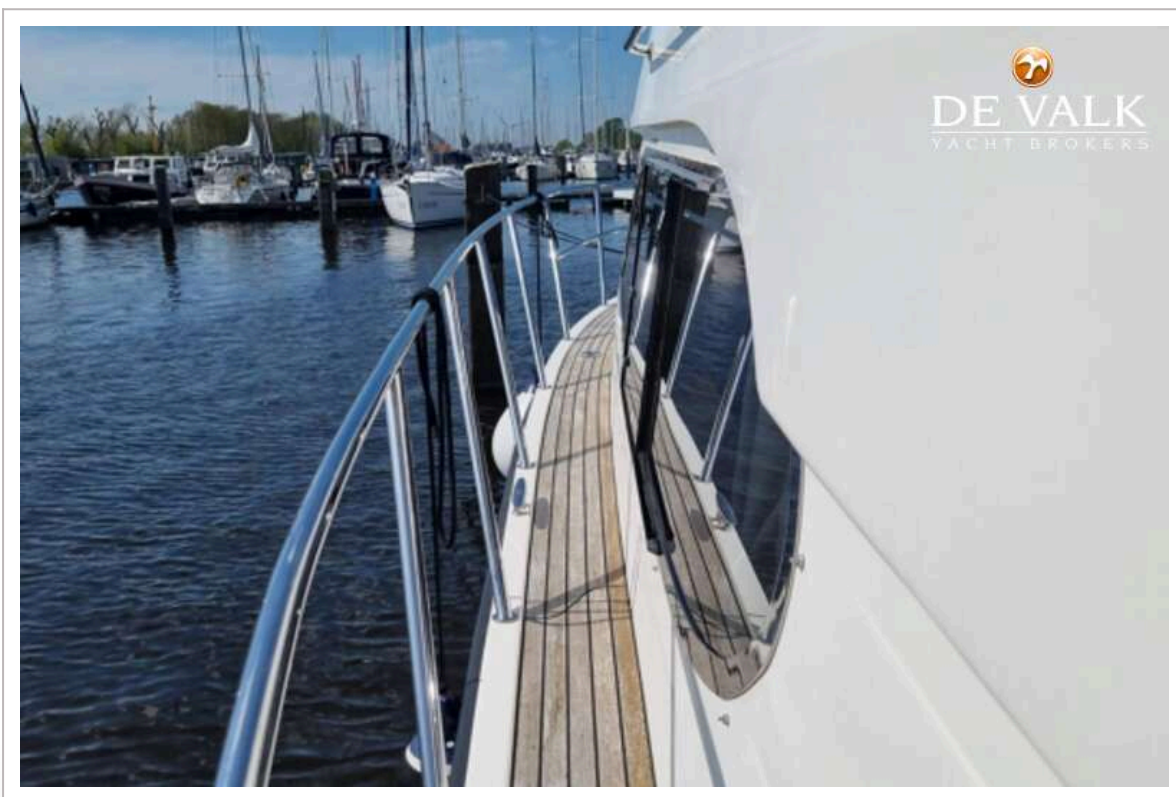
# GALEON 380 FLY



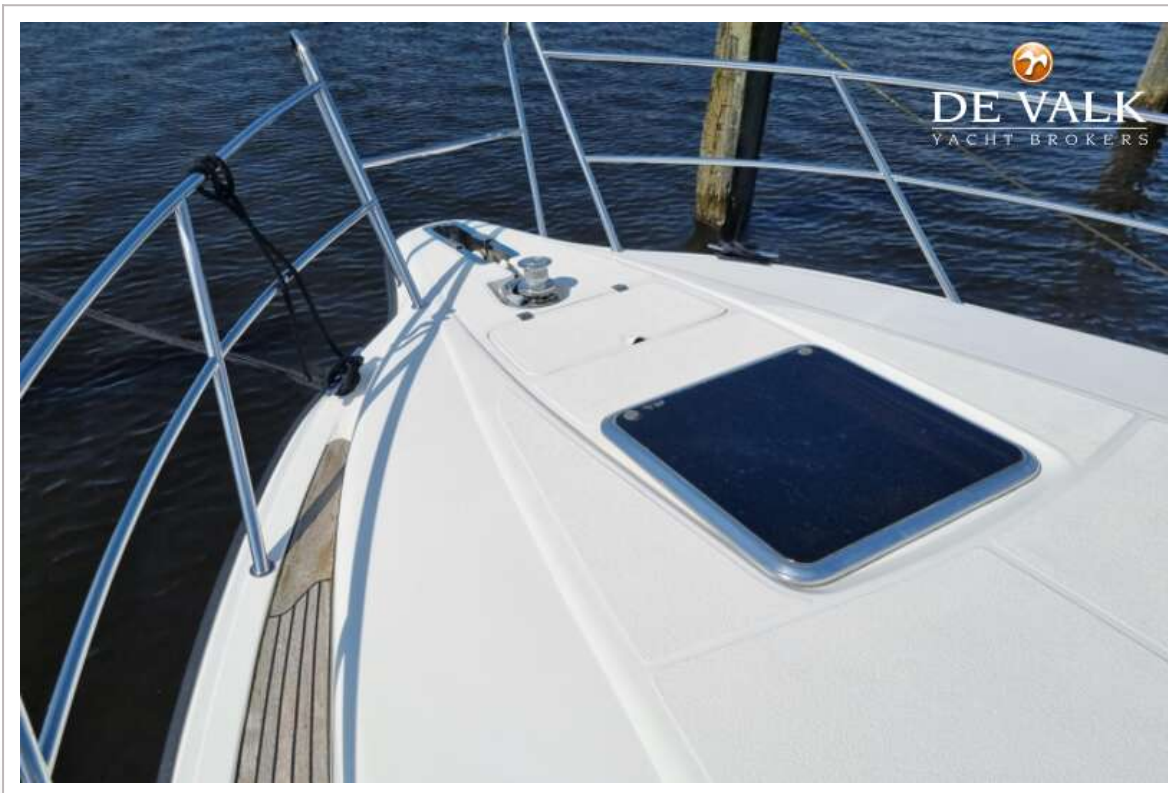
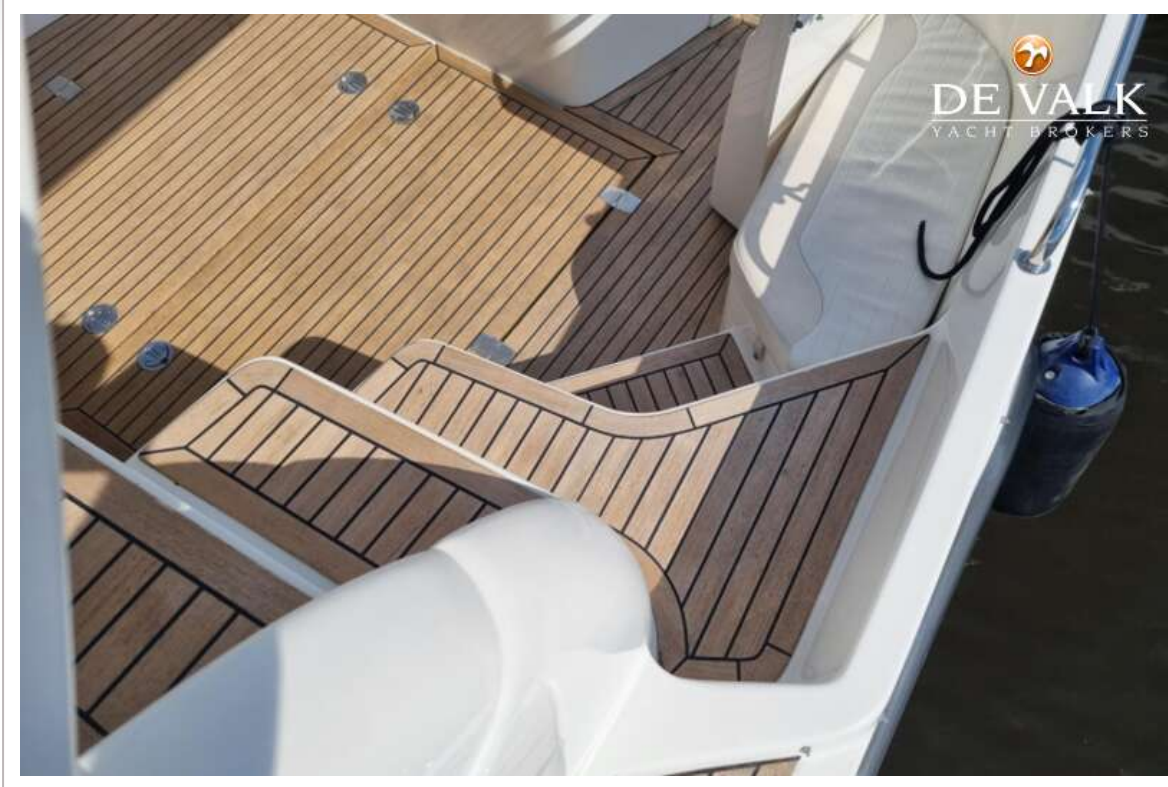
# GALEON 380 FLY



# GALEON 380 FLY



# GALEON 380 FLY



# GALEON 380 FLY



# GALEON 380 FLY



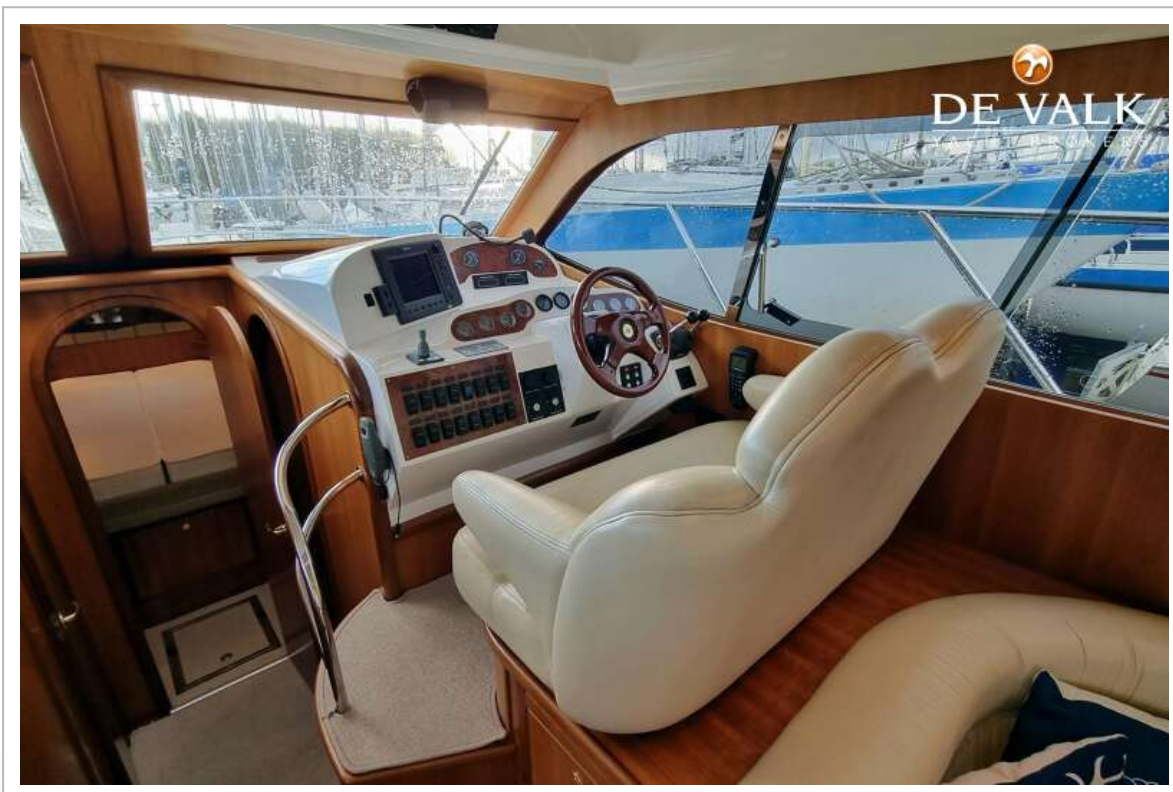
# GALEON 380 FLY



# GALEON 380 FLY



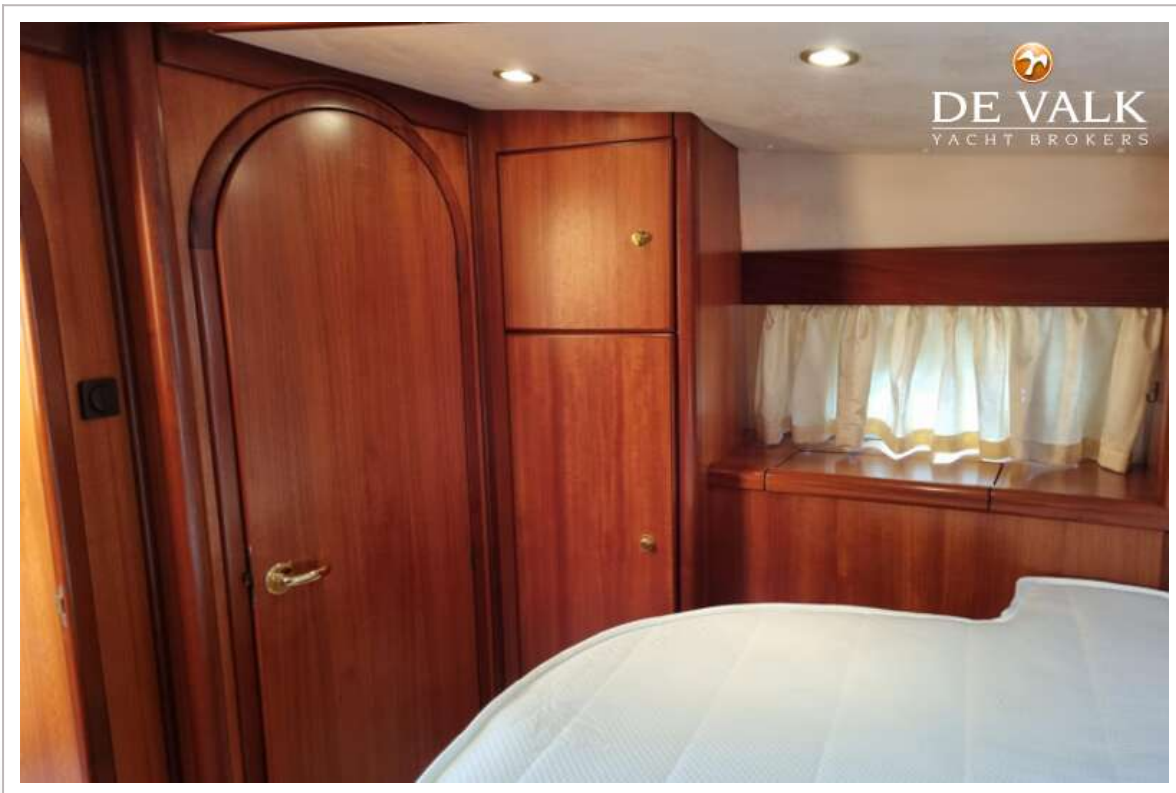
# GALEON 380 FLY



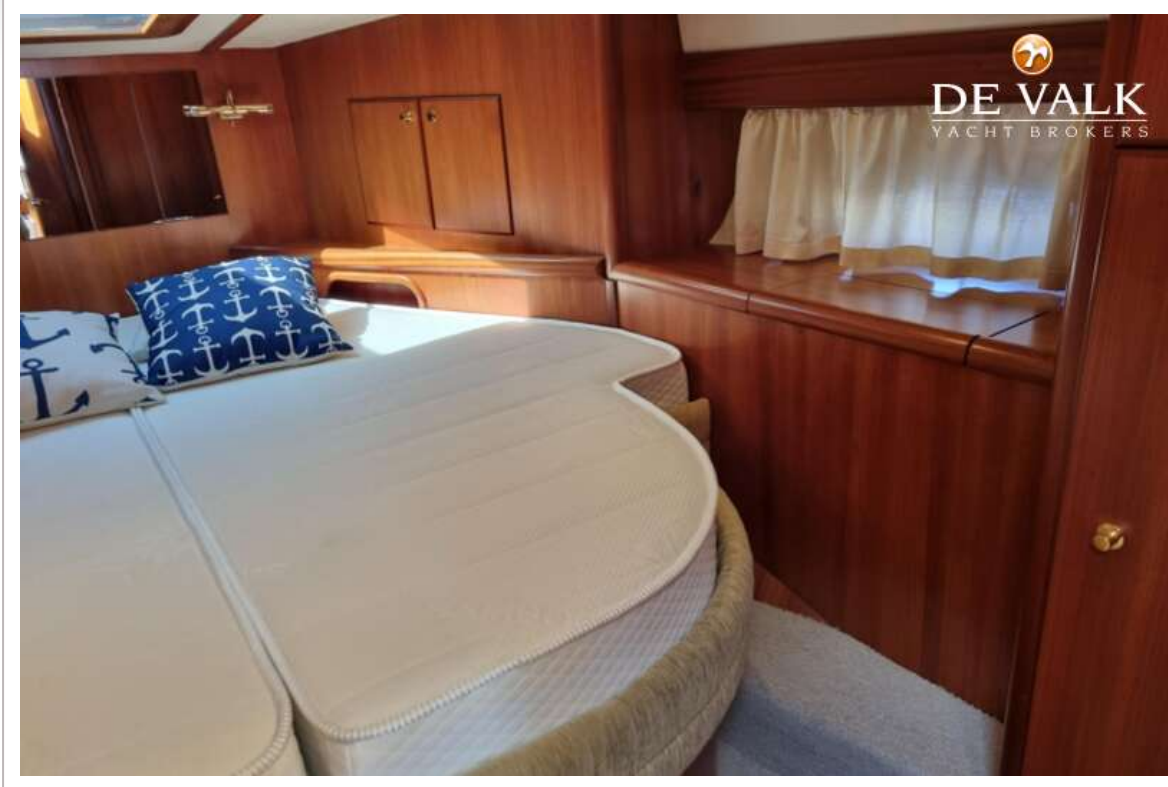
# GALEON 380 FLY



# GALEON 380 FLY



# GALEON 380 FLY



# GALEON 380 FLY



# GALEON 380 FLY



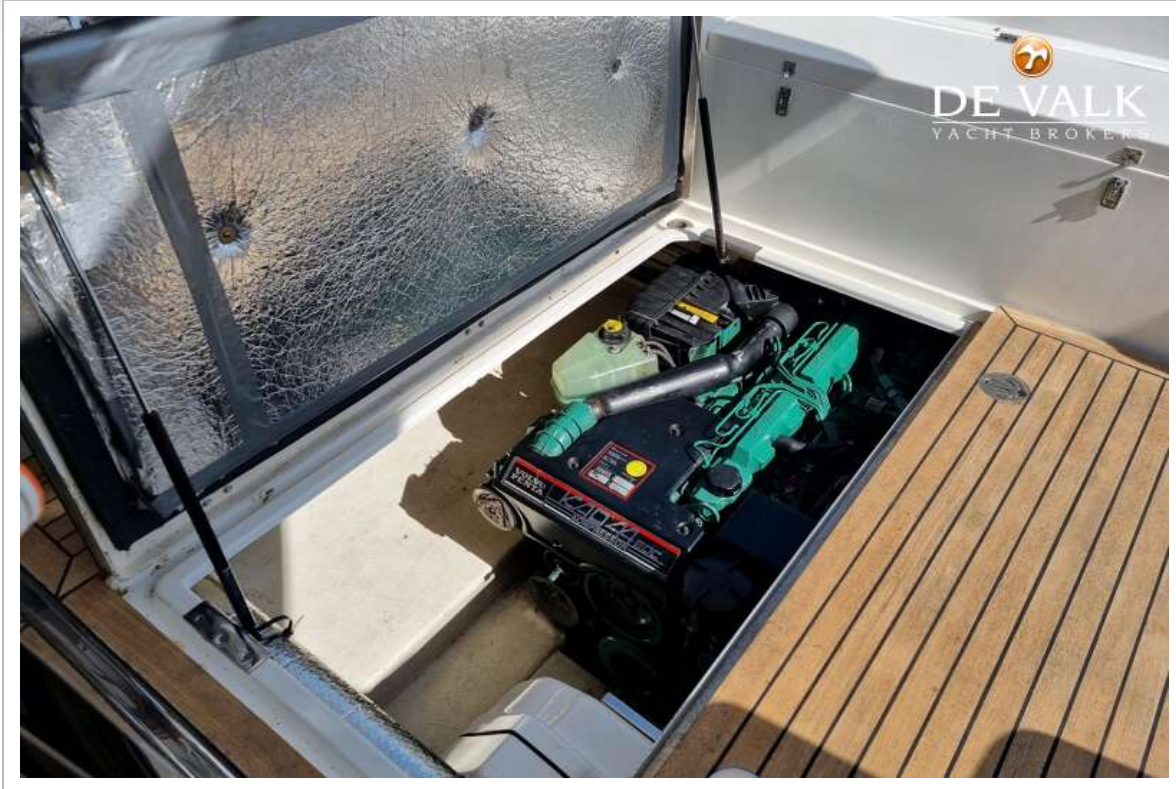
# GALEON 380 FLY



# GALEON 380 FLY



# GALEON 380 FLY



# GALEON 380 FLY

