



HANSE 415



BROKER'S COMMENTS

This well maintained Hanse 415 (no charter & only 354 engine hours) is sold by the second owner and is a well equipped owner's version with retractable bow thruster, Elvstrom furling sails (also gennaker), extensive B&G navigation equipment at chard table & at steering positions (with 2x Carbon Y-Spoke steering wheel). Spacious owner's cabin in the foreship and 2 guest cabins in the aft, one bathroom with toilet and shower. This Hanse 415 is a perfect family cruiser with all the comfort you need. You are very welcome to visit this beautiful Hanse 415 in Sint Annaland.

Jan-Ward van Dantzig

SPECIFICATIONS

Dimensions	12.40 x 4.17 x 2.10 (m)	Builder	Hanse Yachtbau GmbH
Built	2015	Cabins	3
Material	GRP	Berths	6
Engine(s)	1 x Volvo Penta D2-40F diesel	Hp/Kw	40.00 (hp), 29.40 (kw)
Asking price	sold (VAT)	Lying	at sales office

CONTACT

Sales office	De Valk Sint Annaland B.V.	Telephone	+31 (0)166 601 000
Address	Koelhuisweg 4 4697 RM Sint Annaland NL	E-mail	sintannaland@devalk.nl

DISCLAIMER

These particulars are given in good faith as supplied but cannot be guaranteed.



GENERAL

Model	HANSE 415
Type	sailing yacht
LOA (m)	12,40
LWL (m)	11,40
Beam (m)	4,17
Draft (m)	2,10
Air draft (m)	19,60
Headroom (m)	2,00
Year built	2015
Builder	Hanse Yachtbau GmbH
Country	Germany
Designer	Judel/Vrolijk
Displacement (t)	9,2
Ballast (tonnes)	3,3
CE norm	A
Hull material	GRP
Hull colour	grey
Hull shape	round-bilged
Keel type	fin keel T-Speed Keel - with a torpedo
Superstructure material	GRP
Rubbing strake	stainless steel
Deck material	GRP
Deck finish	non-skid moulded in
Superstructure deck finish	non-skid moulded in
Cockpit deck finish	synthetic teak Flexi Teak
Antifouling (year)	2023
Dorades	1 x (Lewmar)
Window material	polycarbonate
Deckhatch	6 x Lewmar - Flush Design - with Ocean Air Screens & Shades
Portholes	aluminium Lewmar with Ocean Air Shades



Insulation	Blasa sandwich in hull above waterline & in deck
Fuel tank (litre)	polyethylene 1 x 160
Level indicator (fuel tank)	yes
Freshwater tank (litre)	polyethylene 1 x 320 & 1 x 200
Level indicator (freshwater)	yes
Blackwater tank (litre)	polyethylene 1 x 35
Blackwater tank extraction	deck extraction + uw line
Wheel steering	chain steering 2 x Carbon Y-Spoke steering wheel (with grey covers)
Outside helm position	2 x Jefa steering pedestal
Emergency tiller	yes
More info on hull	Grey gelcoat hull
Extra info	Some photos shown in this brochure are from May 2020
Extra info	But equipment & condition (after polish) are almost identical

ACCOMMODATION

Cabins	3
Berths	6
Interior	cherry Fineer on high quality marine plywood, satin varnished
Floor	wood Acacia style
Open cockpit	yes
Saloon	Dark Blue upholstery
Headroom saloon (m)	2,00
Heating	diesel ducted hot air Eberspächer
Chart table	On Port Side - Headroom : 1,98 m
Aft Cabin	2 x
Galley	On starboard side - Headroom : 1,97 m
Countertop	Duropol Quartz black surface
Sink	stainless steel 2 x
Cooker	calor gas 2 Burner - gimballed
Oven	yes



Fridge	130 Liter - Top & Front loader with an Isotherm compressor
Hot water system	220V + engine Sigmar 22 L
Water pressure system	electrical
Owners cabin	double bed Forward cabin - Headroom : 1,94 m
Bed length (m)	2,05 x 1,60/1,80
Wardrobe	hanging and shelves
Extra info	Luxery matrass in the owners cabin
Guest cabin 1	double bed Starboard aft cabin - Headroom : 1,90 m
Bed length (m)	2,05 x 1,60
Wardrobe	hanging and shelves
Guest cabin 2	double bed Port side aft cabin - Headroom : 1,90 m
Bed length (m)	2,05 x 1,60
Wardrobe	hanging and shelves
Bathroom	shared Headroom : 1,90 m
Toilet	shared
Toilet system	electric Jabsco
Wash basin	in the bathroom
Shower	separate In bathroom - with door - Headroom : 1,92 m
Extra info	All cabins are equipped with 2 x LED reading light
Extra info	Dimmable LED lights throughout the interior
Extra info	Wine bottle rack under the galley floor

MACHINERY

No of engines	1
Make	Volvo Penta
Type	D2-40F
HP	40
kW	29.40
Fuel	diesel
Year installed	2015
Maximum speed (kn)	8



Cruising speed (kn)	7
Consumption (l/hr)	3
Engine hours	360
Engine cooling system	freshwater heat exchanger
Drive	sail-drive
Saildrive seal	2015
Engine controls	bowden cable
Bowthruster	electric Retractable Quick 4,3 kW - TCD 1022 control
Exhaust	watercooled
Propeller type	fixed
Propeller blades	2
Manual bilge pump	1 x
Electric bilge pump	1 x
Electrical installation	12 / 220 V
Start battery	1 x 12 V / 90 Ah AGM Varta (2015)
Service battery	New in August 2024 : 2 x 12 V / 165 Ah Centrac Deep Cycle AGM
Bowthruster battery	1 x 12 V / 160 Ah Varta AGM (2015)
Battery monitor	yes
Battery charger	12 V / 30 A Mastervolt
Diode battery combiners	yes
Shorepower	with cable
Extra info	Volvo Penta 130S-B Saildrive
Extra info	Light & electric blower in the engine room
Extra info	New alternator 115 A 02-2025 & MDI unit 06-2025

NAVIGATION

Compass	Garmin
Multi control display	2x B&G Triton Display
Depth sounder	yes
Log	yes



Windset	yes
VHF	B&G V50 Mic (with AIS) inside & B&G H50 (wireless) in cockpit
Autopilot	B&G Triton Pilot controller
Rudder angle indicator	Via autopilot display
Radar/GPS/plotter	B&G (in cockpit) - Radar antenna mounted on port side of mast
Electronic chart(s)	1 x
AIS transceiver	2022 : NAIS 500
Navigation lights	LED

EQUIPMENT

Sprayhood	Grey - windows renewed in winter 2023/2024
Bimini	Grey
Cockpit cushions	Grey
Cockpit table	Teak - with folding teak side panels & removable light
Bathing platform	Hinged & manual folding down - covered with Flexi Teak
Boarding ladder	stainless steel (Removable)
Deck shower	Hot & cold water (new in 2023)
Anchor	Delta With anchor roller
Anchor chain	40 meter & a stainless steel swiffel
Anchor 2	Fortress (Aluminium)
Anchor chain	5 m stainless steel chain & 20 m rope
Windlass	electrical Quick Genius with wired remote control on bow
Outboard support	Plastic, on the pushpit
Sea railing	wire Stainless steel - double wired
Grab rail (superstructure)	stainless steel
Pushpit	Stainless steel
Pulpit	Stainless steel
Life raft	container New in 2021 : Lalizas ISO Racing (needs survey)
Life raft (pers)	6
Lifebuoy	Orange horse shoe with light
Safety lines on deck	New in 2021



Fenders	yes
Mooring lines	yes
Radio	Bose (in the saloon)
Clock - barometer	Wempe
Fire extinguisher	yes
Latest extinguisher survey	Need to be surveyed / renewed
Extra info	Red night light in the cockpit (just above the floor)
Extra info	2 x 20 Liter Jerrycan with GTL Diesel in aft cockpit locker
Extra info	Bosuns chair

RIGGING

Rigging	fractional 9/10-rig, tapered masthead
Standing rigging	wire
Brand mast	Seldén
Material mast	aluminium
Spreaders	2 x set
Fully battened mainsail	Elvstrom Furling mainsail, vertical battens (approx. 52,50 m²)
Stoway mast	Selden Furlin
Jib	Elvstrom Selftacking Jib (approx. 34,50 m²) with black UV strip
Genoa furler	Furlex 304S
Gennaker	Elvstrom Gennaker with a furler
Self tacking jib installation	yes
Reefing System	main in-mast furling (Manual)
Backstay adjuster	tackle
Boomvang	gasspring Seldén Rodkicker
Primary sheet winch	2 x Lewmar 45 AST EVO (manual)
Multifunctional winches	2 x Lewmar 45 AST EVO (manual)
Extra info	2 x 5-Spinlock jammer



HANSE 415



HANSE 415



HANSE 415



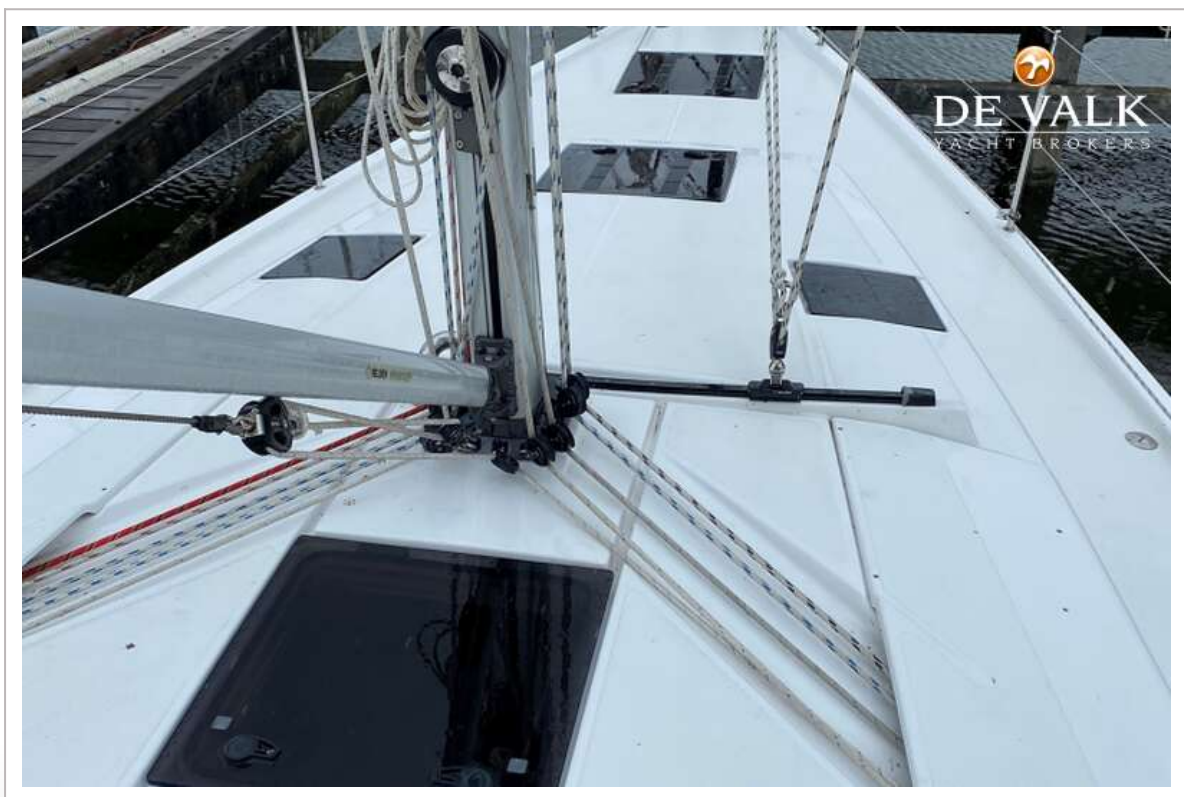
HANSE 415



HANSE 415

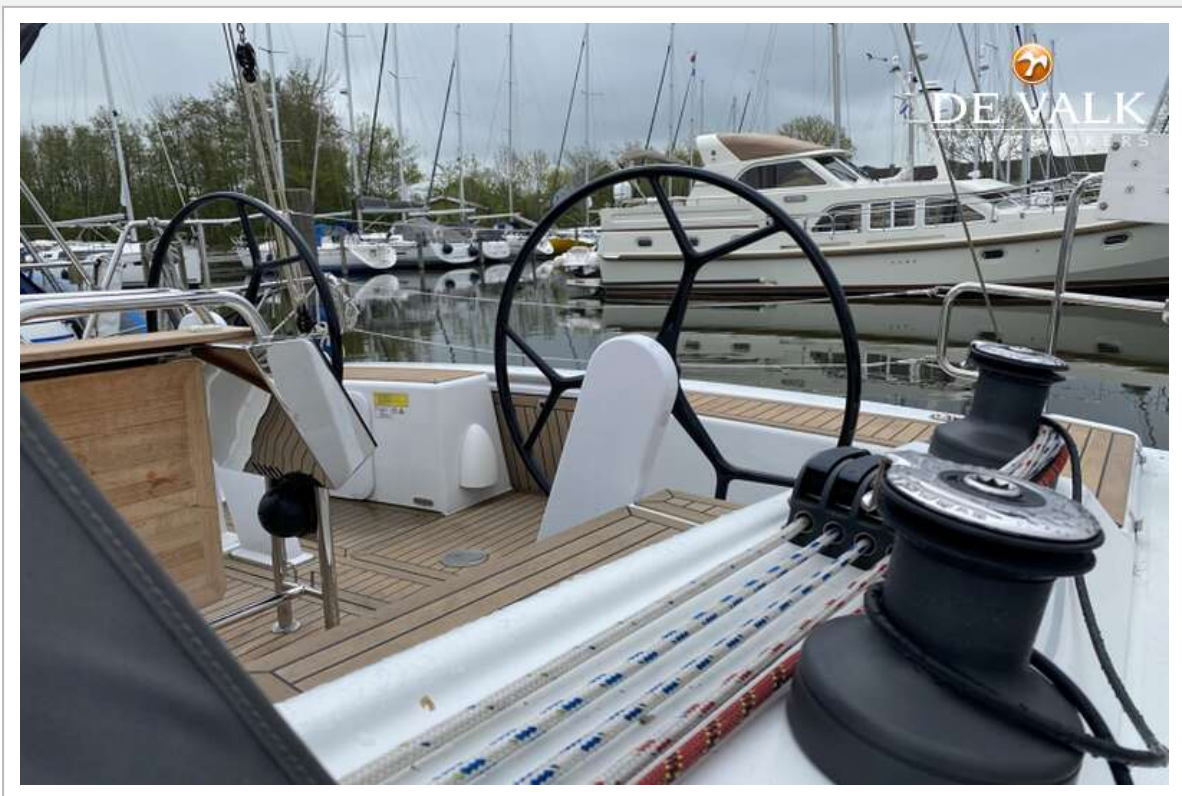


HANSE 415

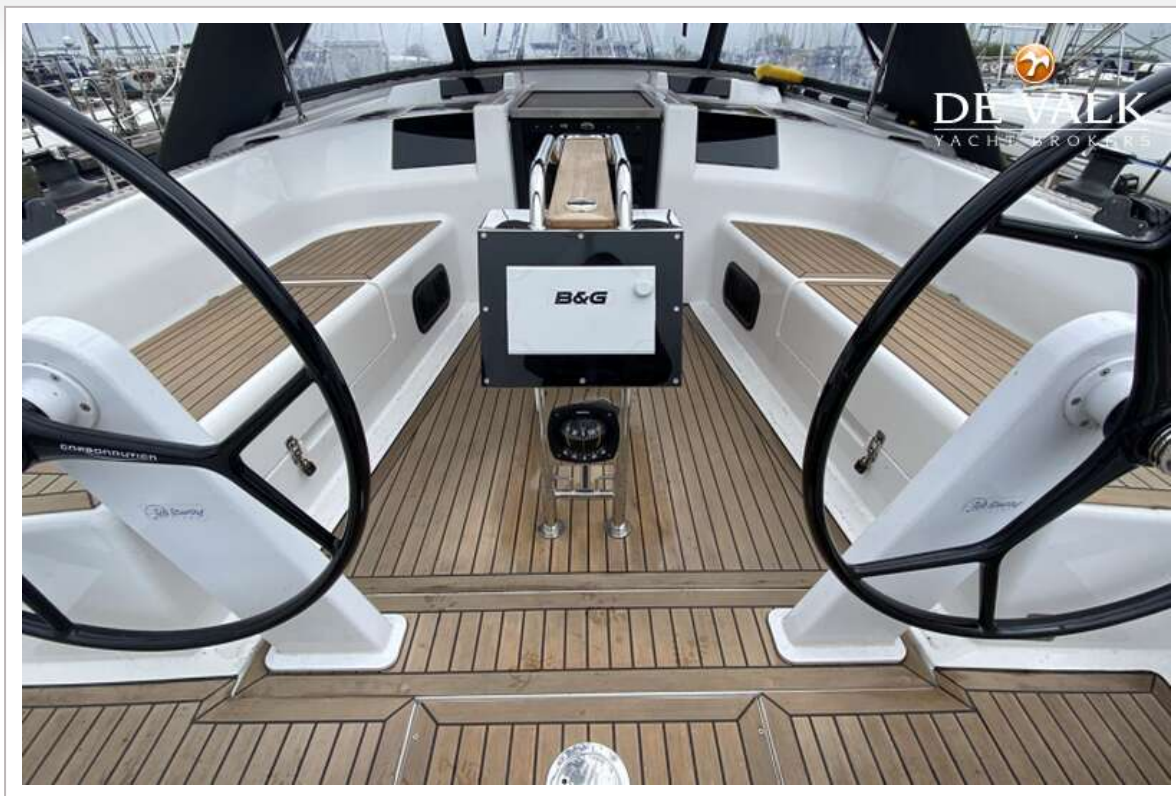


HANSE 415





HANSE 415



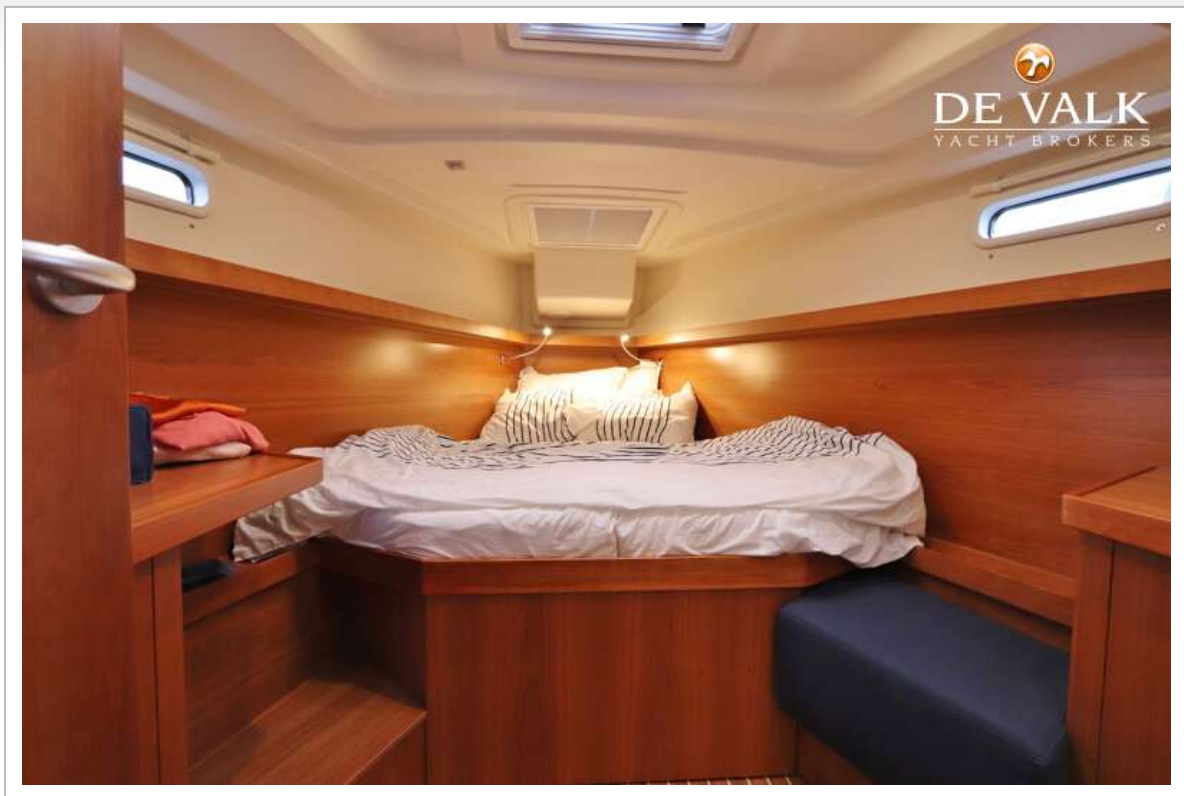
HANSE 415



HANSE 415



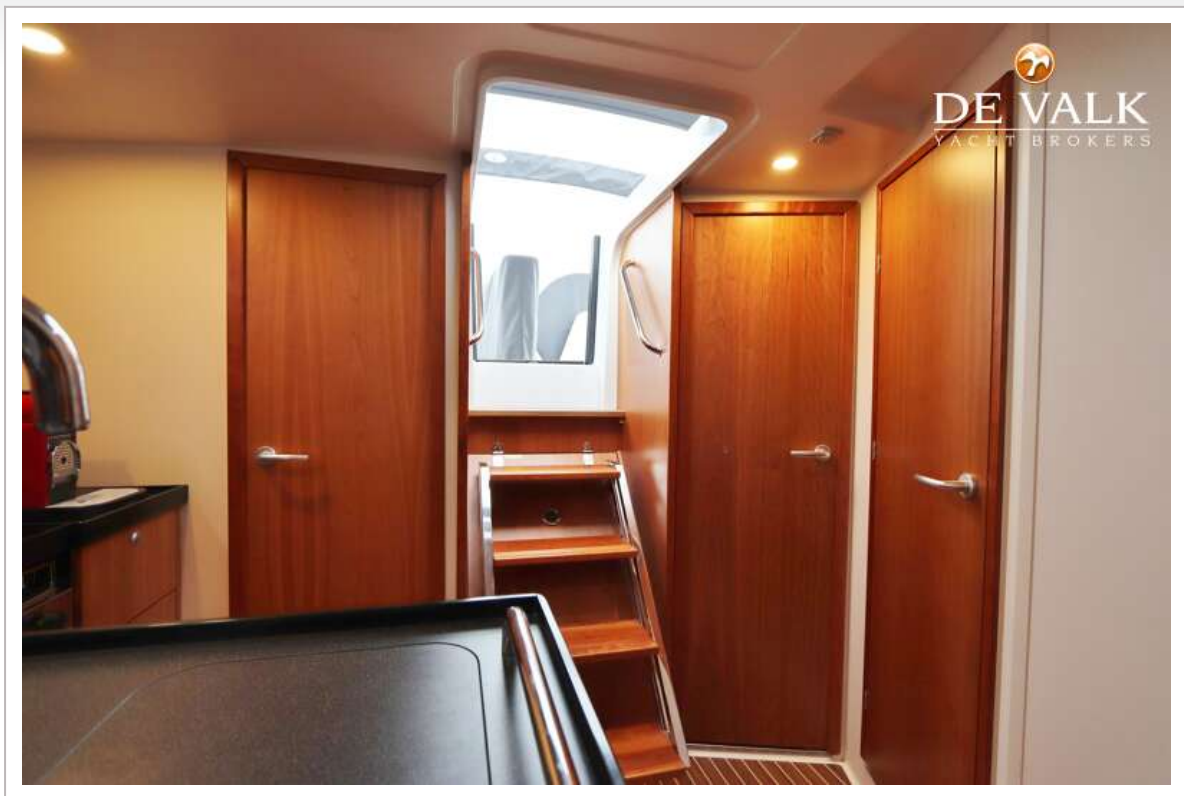
HANSE 415



HANSE 415



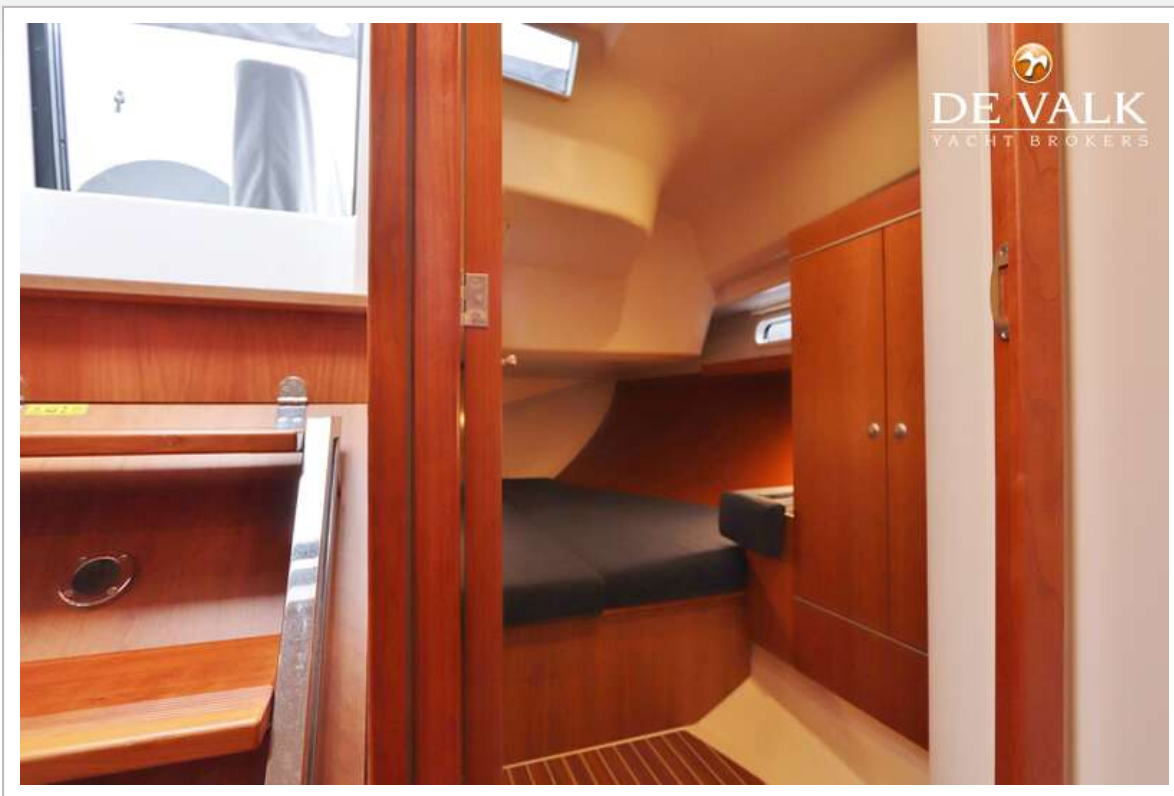
HANSE 415

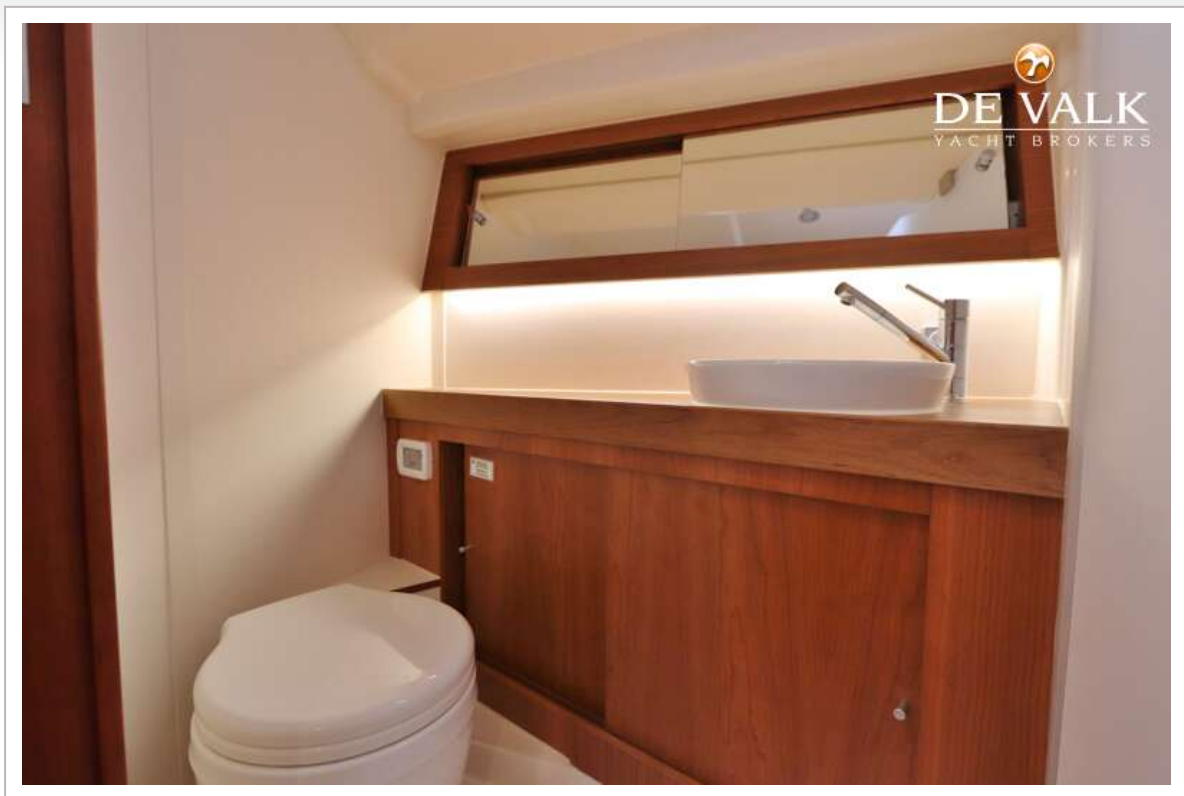


HANSE 415

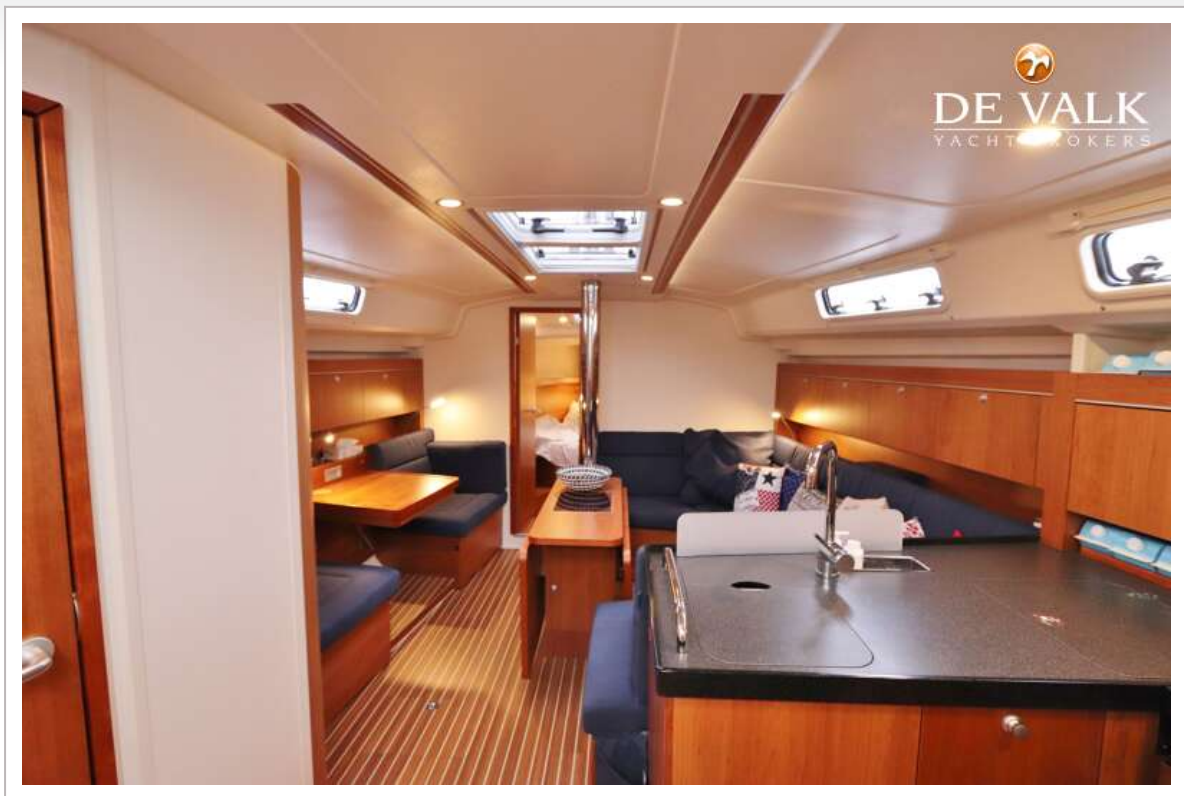


HANSE 415

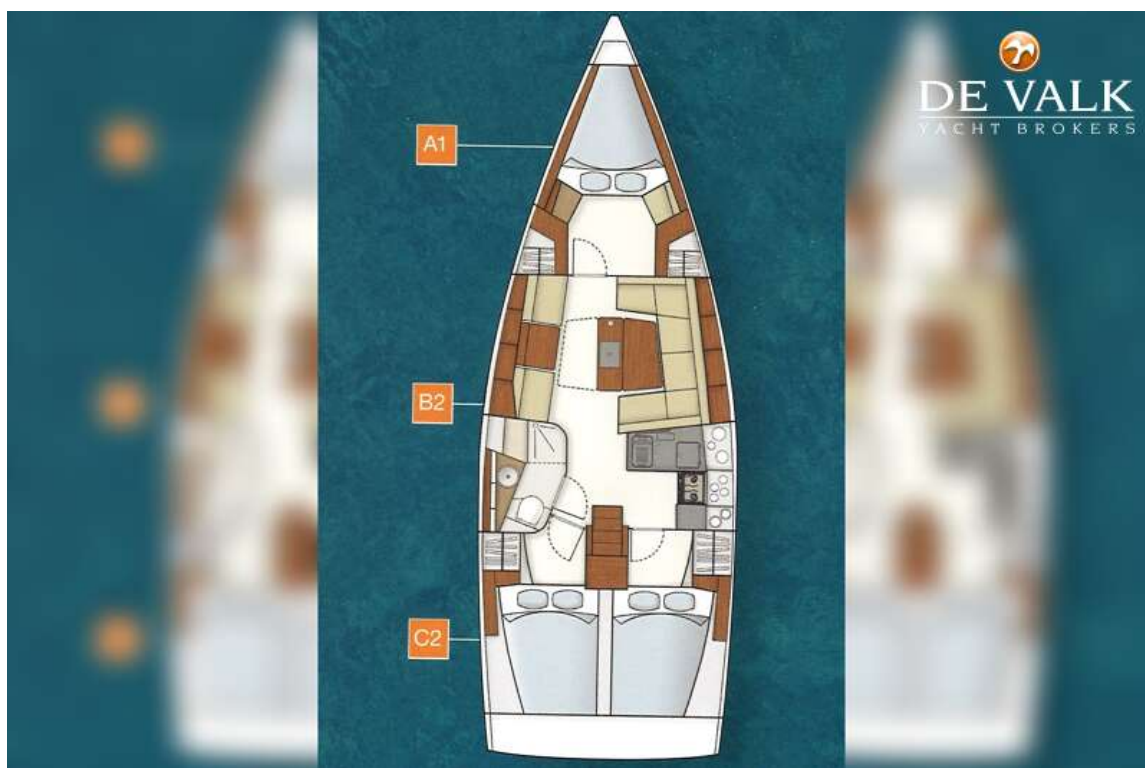




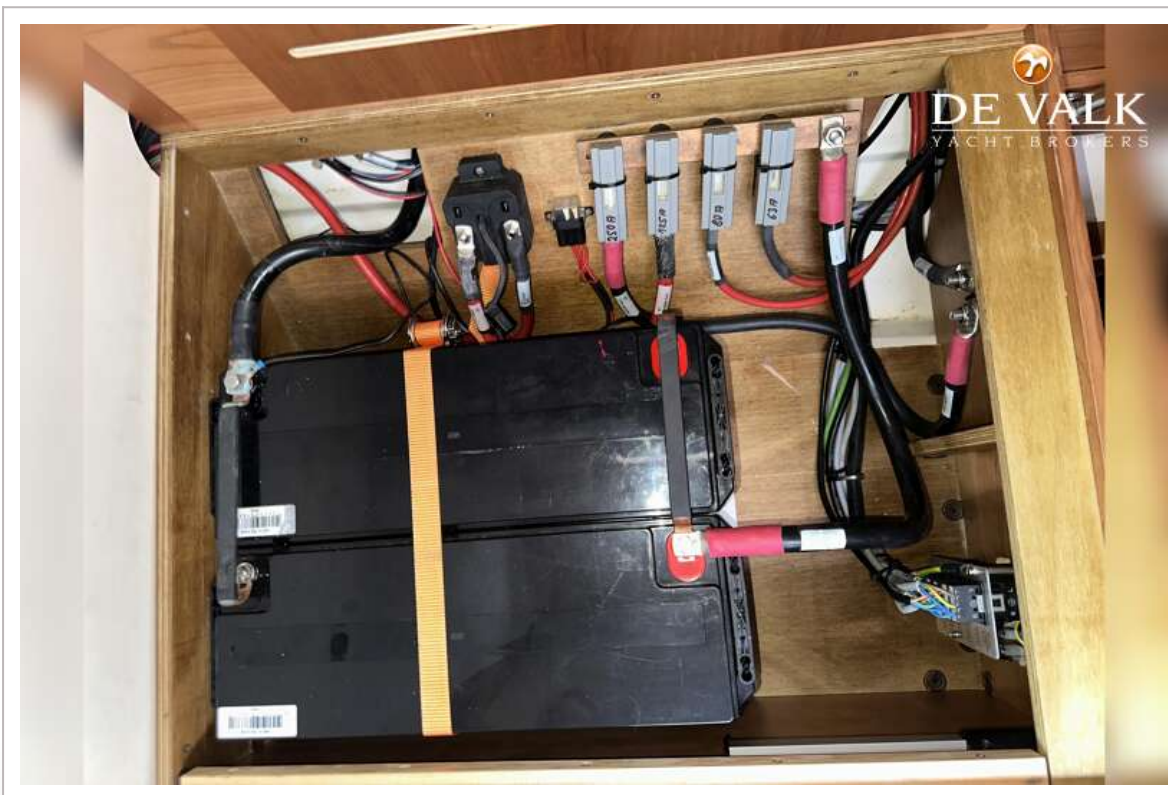
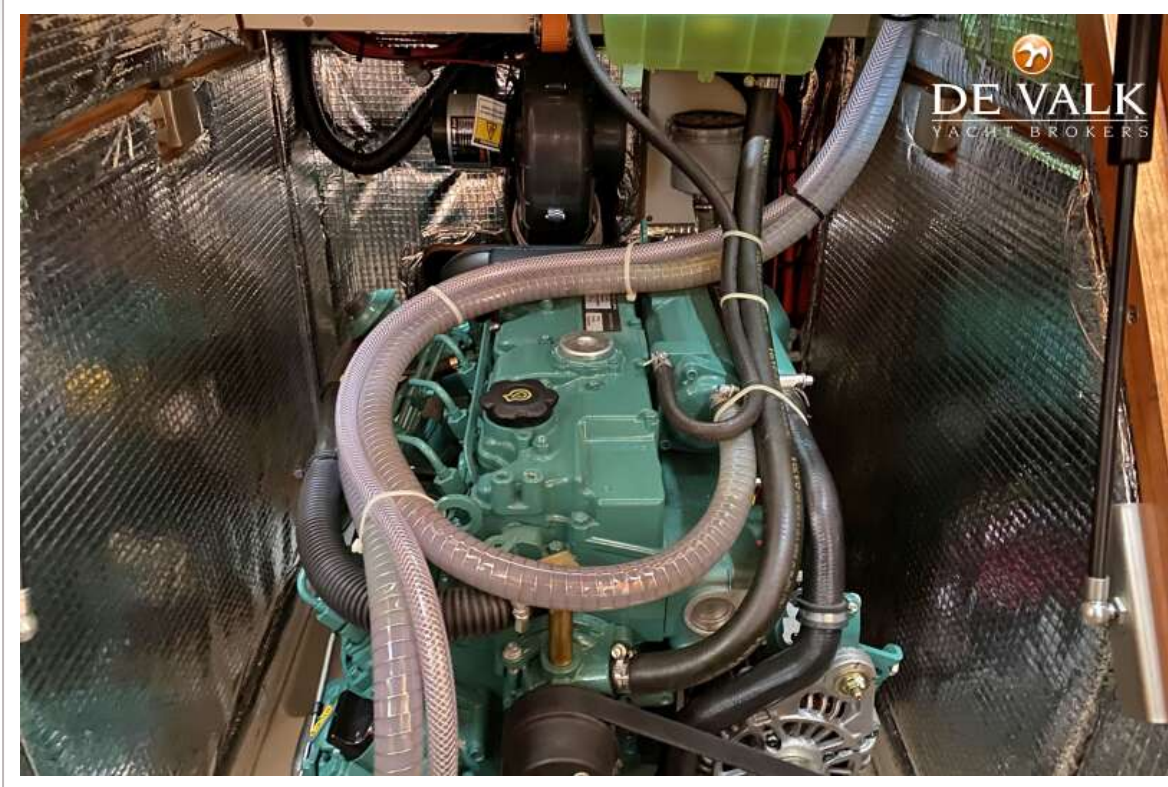
HANSE 415

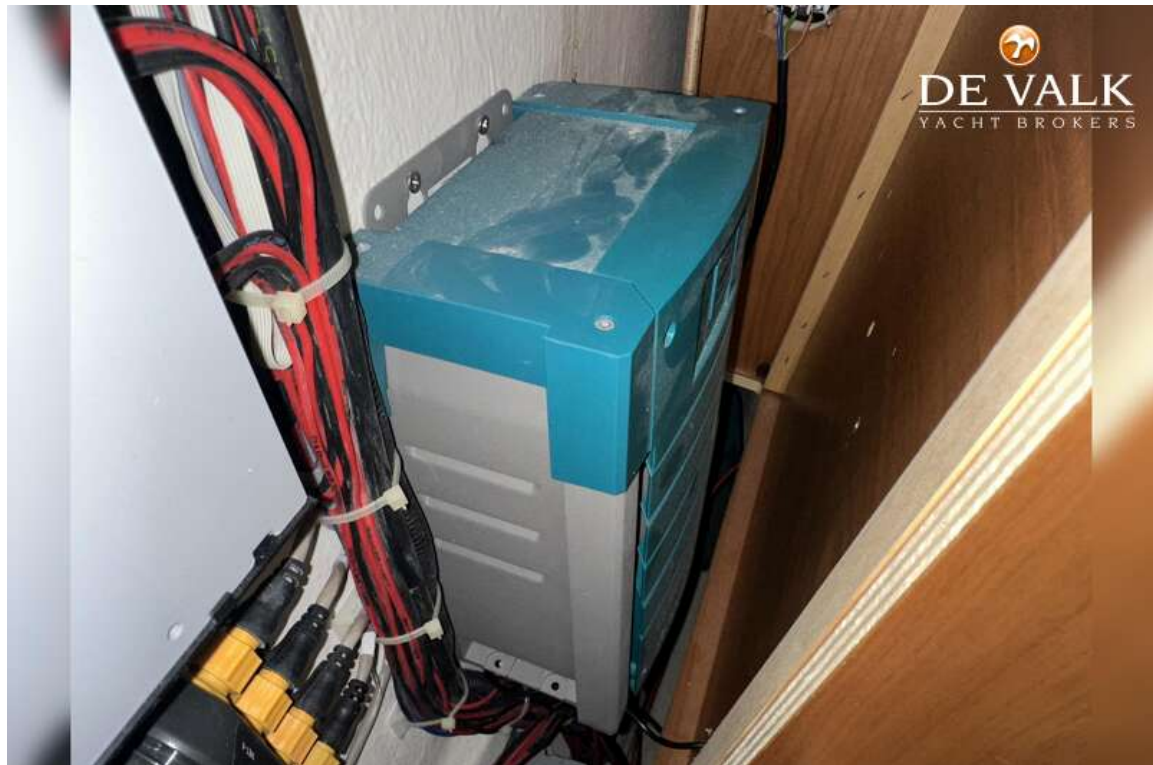


HANSE 415



HANSE 415





HANSE 415

