



LUXE MOTOR 1700



LUXE MOTOR 1700

BROKER'S COMMENTS

The line of the Luxe Motor will receive many times a look of appreciation. Sold by her second owner. Maintained in a high standard and ready to go. Double glazed windows and a good insulation plus hot water heating make her ideal for long journeys and live aboard. Her beautiful lines are a guarantee for smooth sailing. Her 125 Hp main engine and hydraulic bow and stern thruster make maneuvering easy. Two pinanchors give a lot of freedom and easy use. "Emma" can be inspected in our salesmarina in Sneek.

Pieter Bosma

SPECIFICATIONS

Dimensions	17.00 x 4.50 x 1.19 (m)	Builder	Euroship Services Heerewarden
Built	2007	Cabins	2
Material	Steel	Berths	5
Engine(s)	1 x John Deere 6068 diesel	Hp/Kw	125.00 (hp), 92.00 (kw)
Asking price	sold (VAT)	Lying	at sales office

CONTACT

Sales office	De Valk Sneek	Telephone	+31 (0)515 42 80 30
Address	Zwolsmanweg 7 8606 KC Sneek NL	E-mail	sneek@devalk.nl

DISCLAIMER

These particulars are given in good faith as supplied but cannot be guaranteed.



LUXE MOTOR 1700

GENERAL

Model	LUXE MOTOR 1700
Type	motor yacht
LOA (m)	17,00
Beam (m)	4,50
Draft (m)	1,19
Air draft (m)	3,05
Headroom (m)	2,00
Year built	2007
Builder	Euroship Services Heerewaarden
Country	The Netherlands
Displacement (t)	40
CE norm	C
Hull material	steel
Hull colour	grey
Hull thickness (mm)	8-6 mm
Hull shape	multi hard chine
Superstructure material	steel
Superstructure (mm)	6
Deck material	steel
Deck finish	non-skid paint
Superstructure deck finish	non-skid paint
Cockpit deck finish	teak
Window frame	aluminium
Window material	double glazing
Deckhatch	wooden deckhatches with double glass
Portholes	brass
Insulation	rockwool
Mast can be lowered	electric
Fuel tank (litre)	steel 2800 ltr (2x 1400)
Fuel tank 2 (litre)	steel 1400 ltr (2x 700)



LUXE MOTOR 1700

Level indicator (fuel tank)	VDO
Freshwater tank (litre)	steel 2.200 ltr
Level indicator (freshwater)	VDO
Blackwater tank (litre)	steel 800
Level indicator (blackwater)	VDO
Blackwater tank extraction	deck extraction + pump
Wheel steering	hydraulic
Inside helm position	yes
More info on hull	Spraypainted 2018

ACCOMMODATION

Cabins	2
Berths	5
Interior	oak
Floor	teak And PVC
Aft deck	with teak
Deck saloon	yes
Headroom saloon (m)	2.00
Heating	central heating Floorheating Kabola B17 Tap
Air-conditioning	reverse cycle airco Webasto
Aft Cabin	yes
Dinette	yes
Sliding door to aft deck	Aluminium
Galley	yes
Countertop	plastic
Sink	stainless steel
Cooker	induction AEG 4 burner
Oven	AEG
Extractor	Zanussi
Fridge	Liebherr Drawer version
Freezer	with 3 drawers in Laundry room Liebherr



LUXE MOTOR 1700

Hot water system	on central heating
Water pressure system	electrical 220V pump
Coffee maker	yes
Owners cabin	French bed
Bed length (m)	2.00 x 1.60m.
Wardrobe	walk-in closet
Bathroom	en suite
Toilet	en suite
Toilet system	electric
Wash basin	in the bathroom
Shower	en suite
Guest cabin 1	twin single
Bed length (m)	2.00 x 0.76m.
Wardrobe	shelves
Bathroom	en suite
Toilet	en suite
Toilet system	electric
Wash basin	in the bathroom
Shower	en suite
Washing machine	in separate washing room Candy CO136
Extra info	side doors
Extra info	front center window can be opened

MACHINERY

No of engines	1
Make	John Deere
Type	6068
HP	125
kW	92.00
Fuel	diesel
Maximum speed (kn)	8,3



LUXE MOTOR 1700

Cruising speed (kn)	6,5
Consumption (l/hr)	4
Engine hours	2467
Engine cooling system	closed keelcooling
Drive	shaft
Shaft seal	yes
Engine controls	electrical Morse
Gearbox	hydraulic Twin Disc 3:1
Bowthruster	hydraulic
Sternthruster	hydraulic
Exhaust	dry
Thrust bearing	Python
Propeller type	fixed 26"x 23"
Propeller blades	4
Propeller shaft material	stainless steel
Shaft lubrication	water
Electric bilge pump	yes
Electrical installation	24/220V
Generator	Beta Marine 6KVA
Batteries	yes
Start battery	2x 120Ah
Service battery	21 kWh in total setup in a way that 15 kWh can be used Eco Lithium
Generator battery	yes
Battery monitor	Victron Multi Control
Battery charger/inverter	Victron Quatro 24/8000/200
Solar panel	with Blue Solar MPPT150 135 6 panels: LG 335W
Diode battery combiners	yes
Shorepower	with cable
Extra info	front and aft Pinanchors
Extra info	extra strong Mastervolt Altenator 3.5 kW setup to give a high rate at low refs



NAVIGATION

Compass	yes
Depth sounder/log	Raymarine
VHF	Standard Horizon Eclipse
Rudder angle indicator	VDO
Plotter/GPS	Garmin GPS12
Navigation lights	yes

EQUIPMENT

Fixed hardtop	yes
Cockpit cover	yes
Anchor	yes
Anchor chain	yes
Windlass	manual
Deck wash	yes
Sea railing	steel
Grab rail (superstructure)	steel
Railing side opening gates	yes
Wiper	3x
Fenders	yes
Mooring lines	yes
Fire extinguisher	yes
Extinguisher in engine room	remotely controled



LUXE MOTOR 1700



LUXE MOTOR 1700



LUXE MOTOR 1700



LUXE MOTOR 1700



LUXE MOTOR 1700



LUXE MOTOR 1700



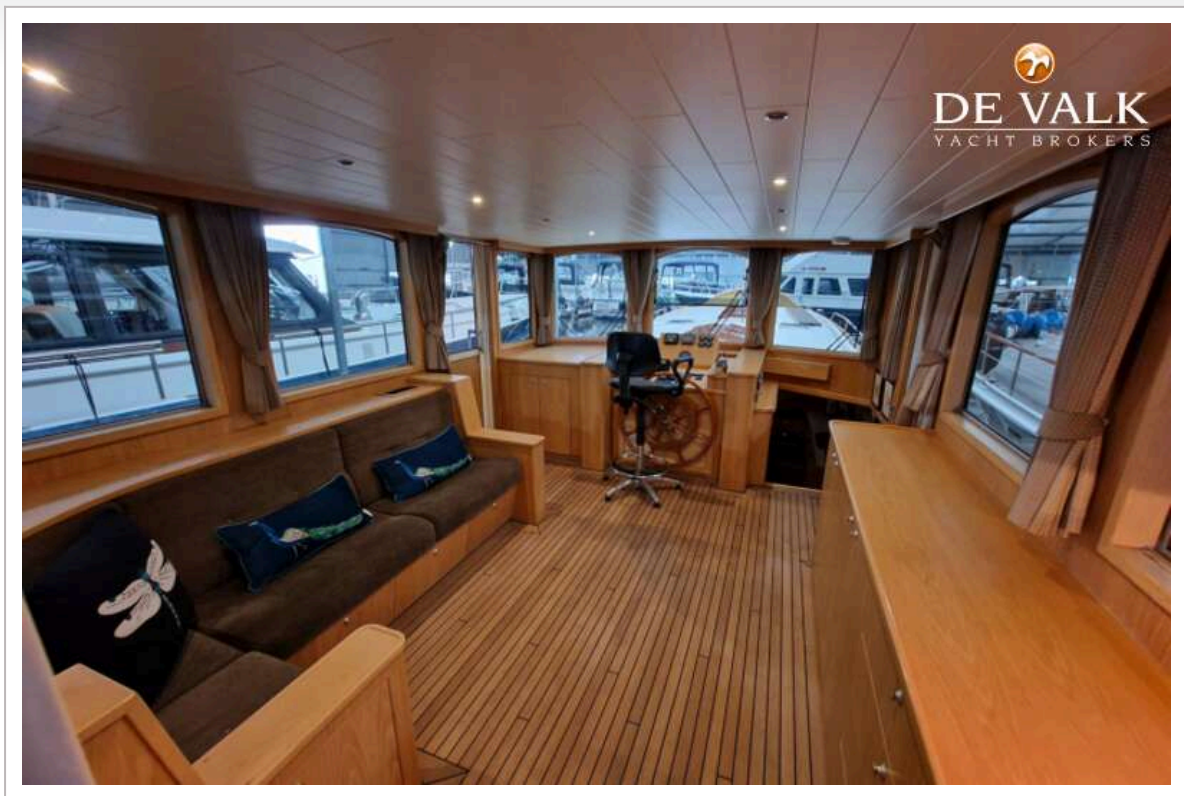
LUXE MOTOR 1700



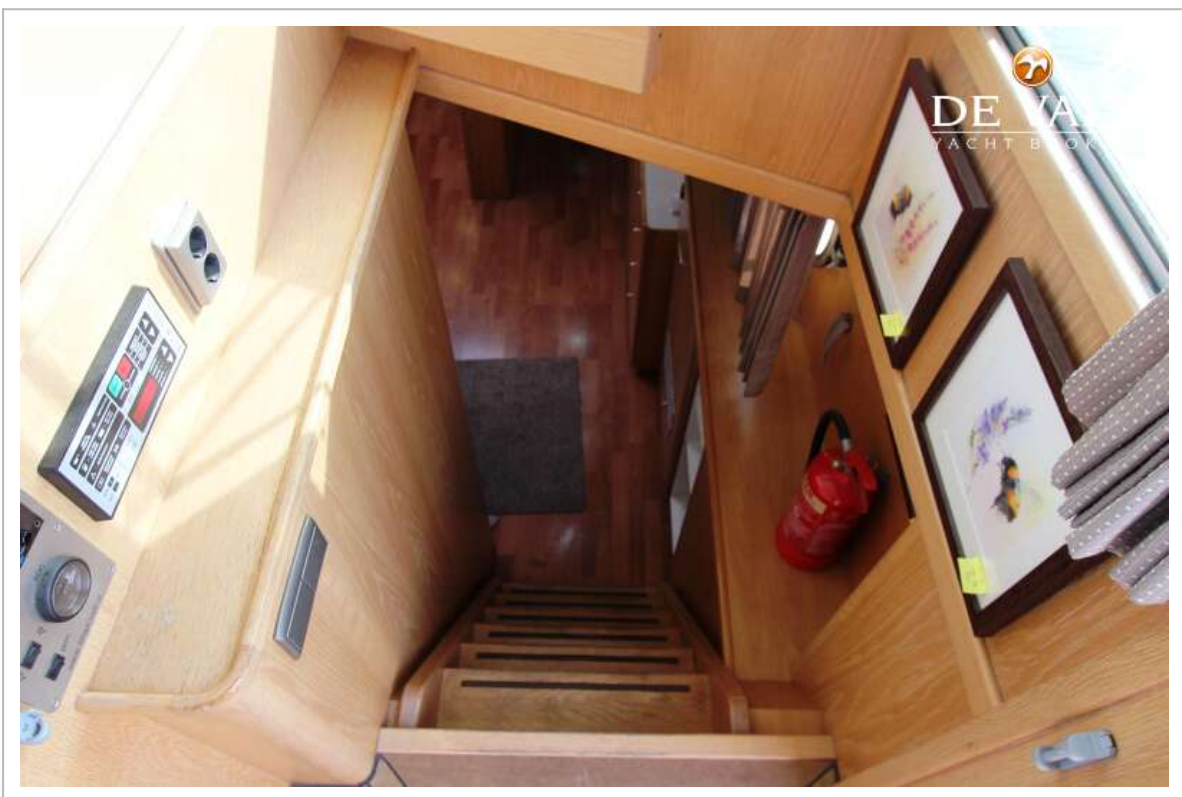
LUXE MOTOR 1700



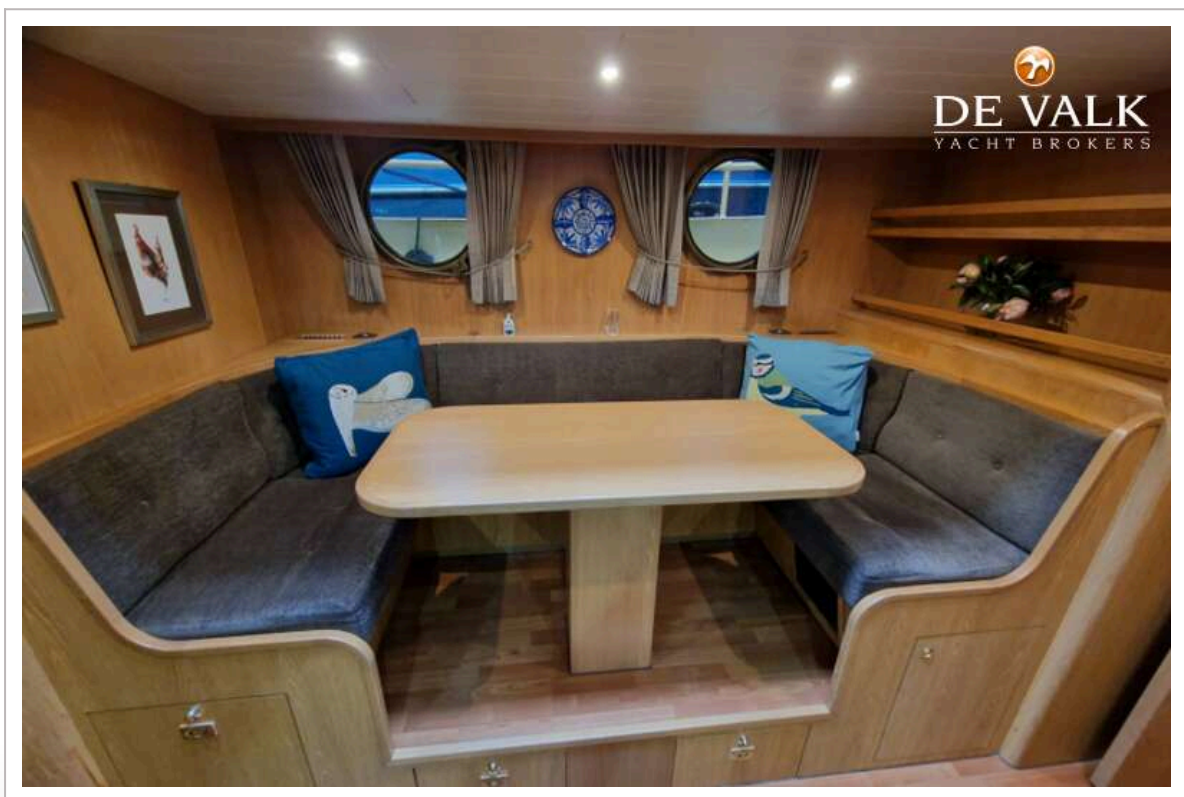
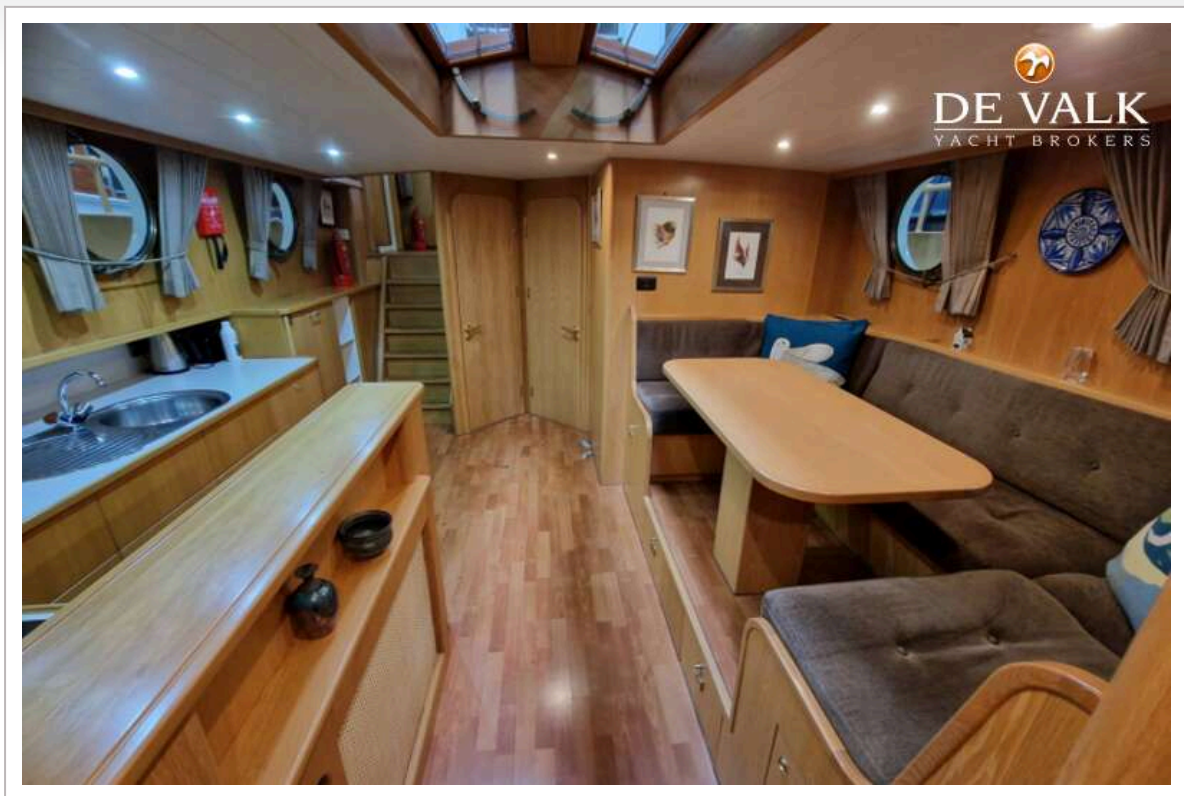
LUXE MOTOR 1700



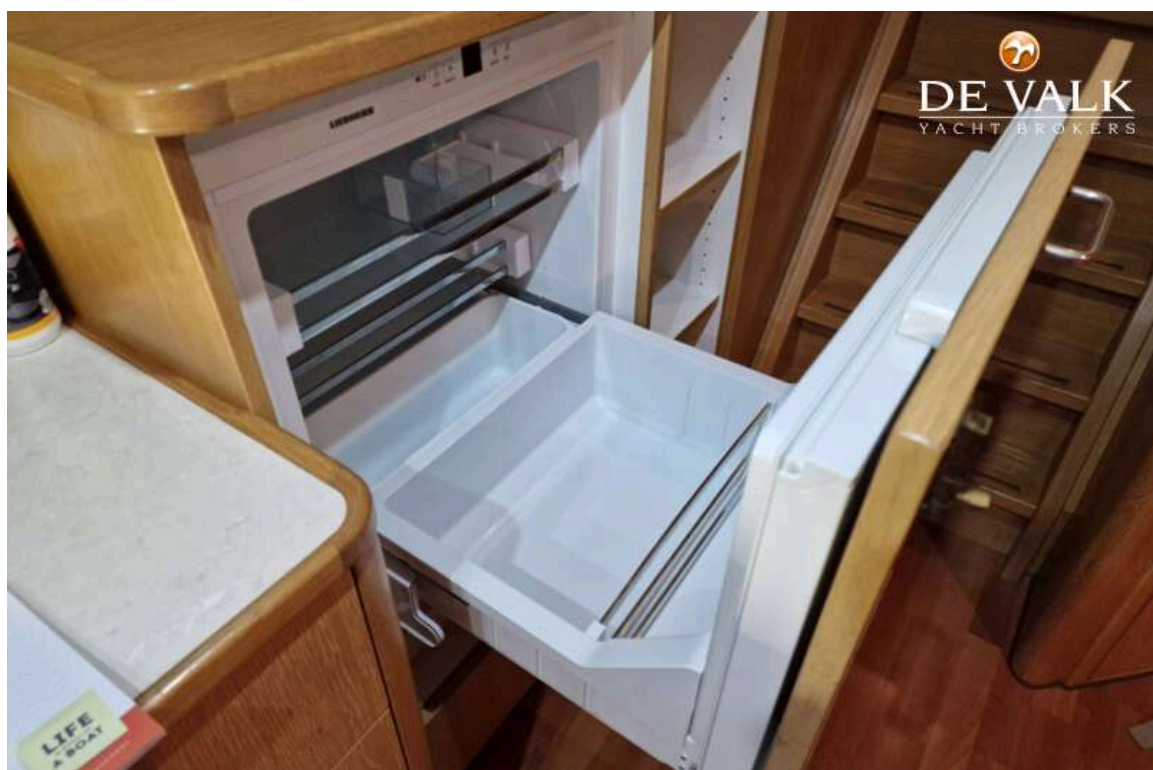
LUXE MOTOR 1700



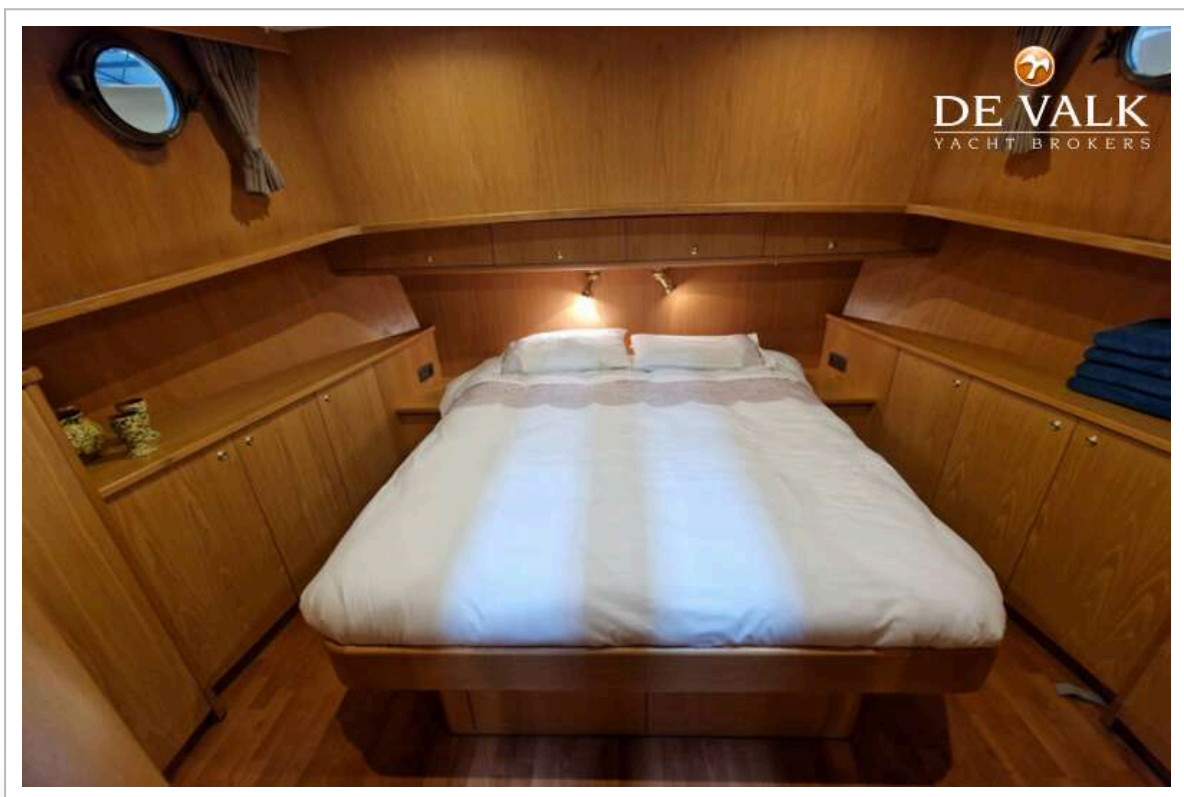
LUXE MOTOR 1700



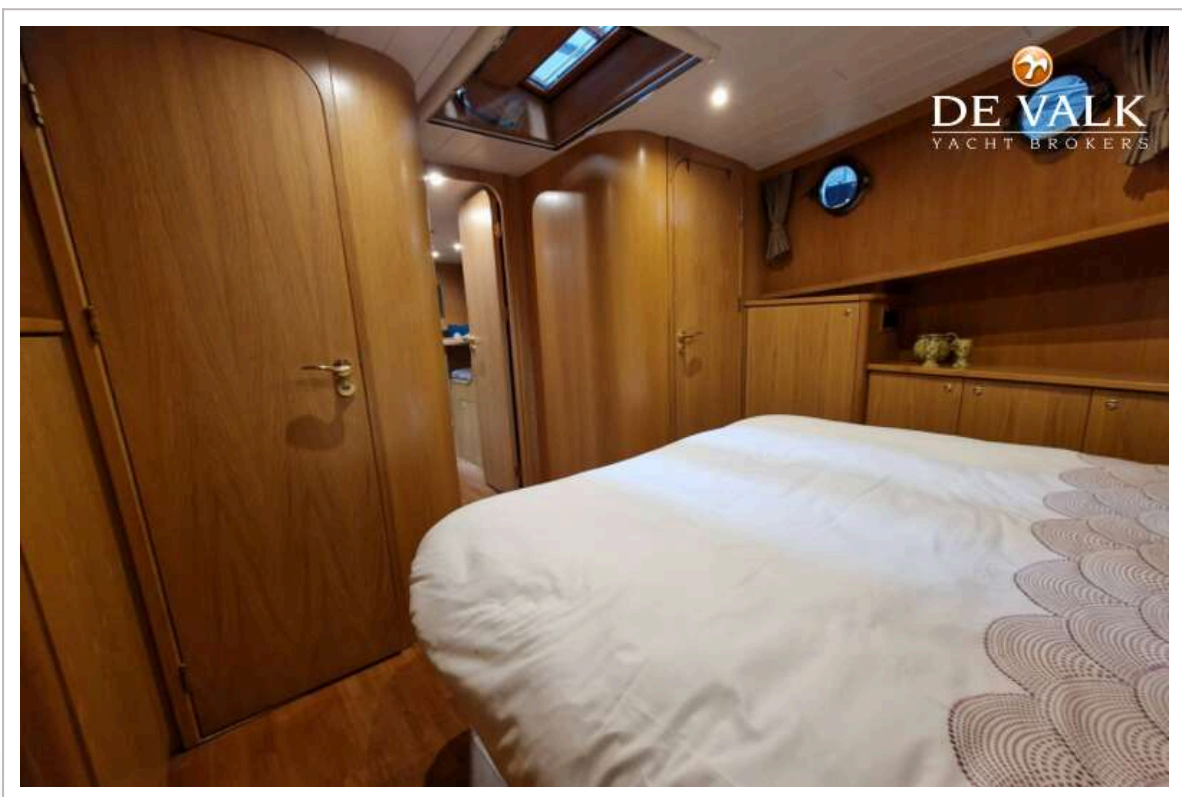
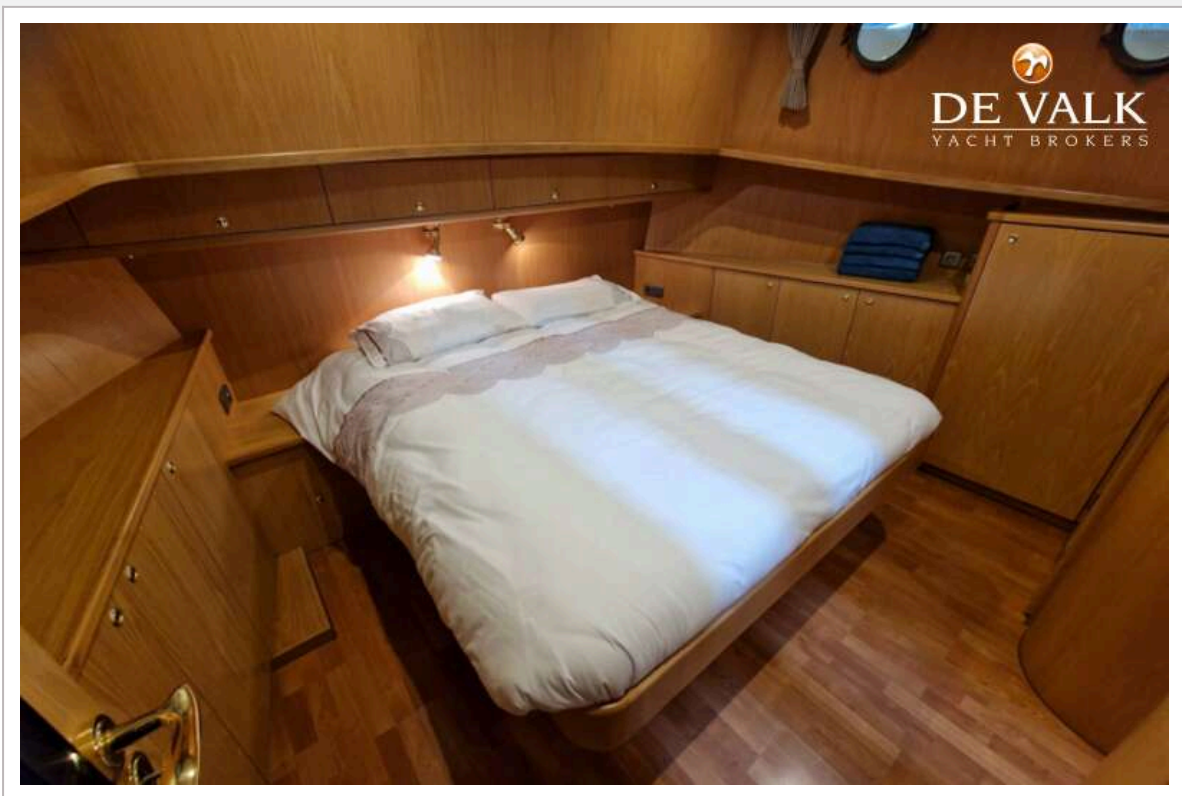
LUXE MOTOR 1700



LUXE MOTOR 1700



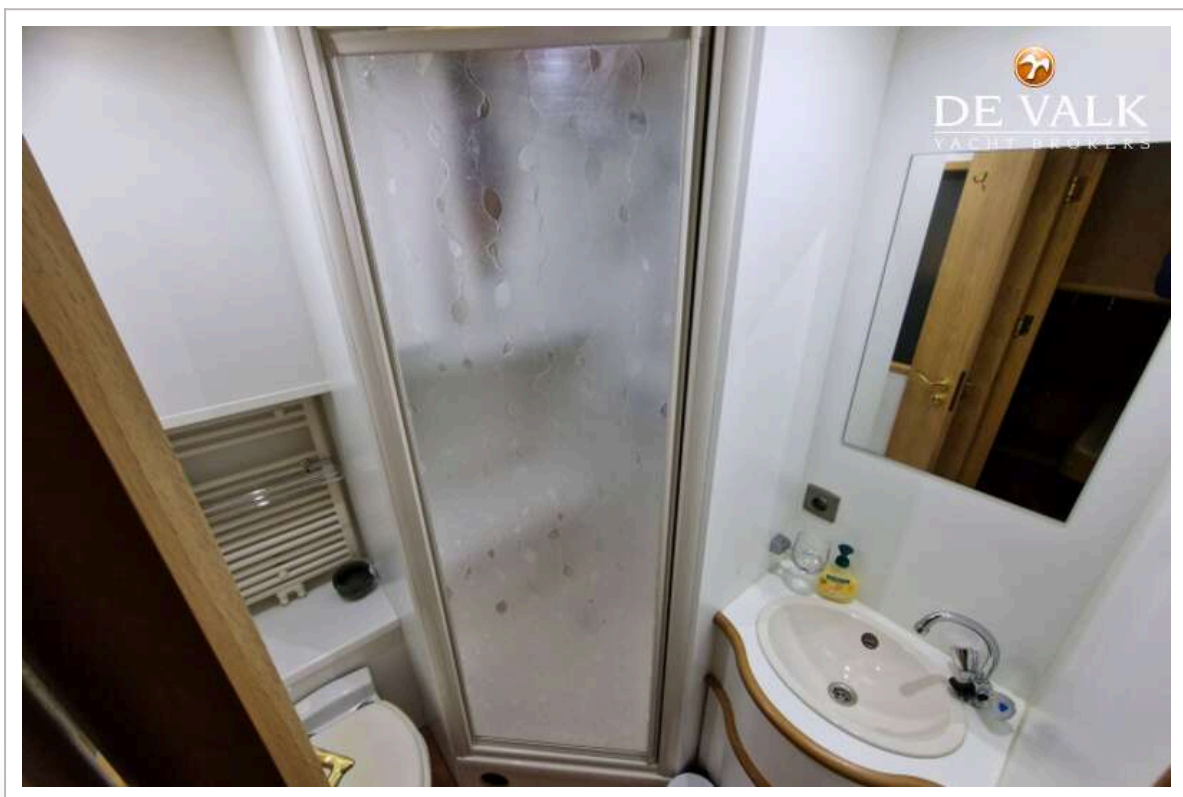
LUXE MOTOR 1700



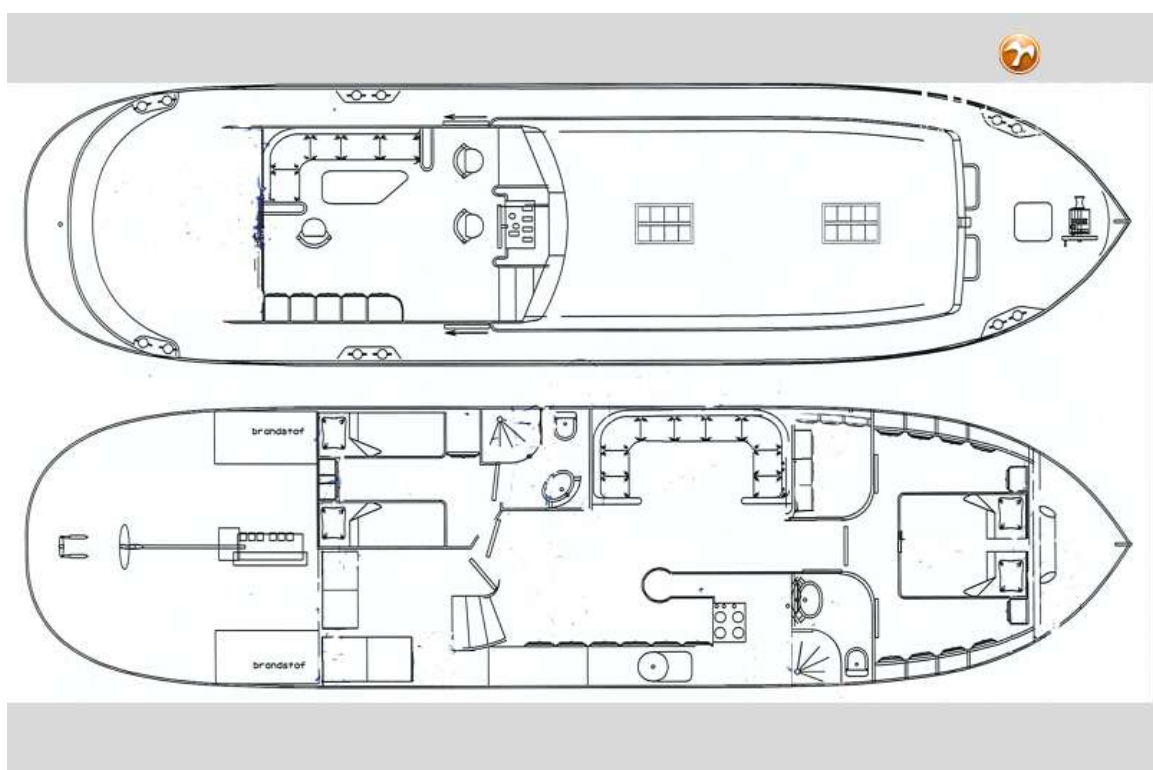
LUXE MOTOR 1700



LUXE MOTOR 1700



LUXE MOTOR 1700



LUXE MOTOR 1700

