



DE VALK  
YACHT BROKERS



ALTENA LOOK 2000



DE VALK  
YACHT BROKERS

# ALTENA LOOK 2000

## BROKER'S COMMENTS

Well maintained Altena Look 2000 named "Kamina" from 1992. Because of her spacious accommodation the motor yacht is extremely suitable for longer stays on board. Thus, the "Kamina" is equipped with a spacious salon, kitchen with separate dinette, spacious owners and guest cabin with separate toilet and separate shower. In 2017 this Altena look 2000 has had a refit in which a brand new Perkins diesel engine has been installed, the cockpit has new frames and windows, the electrics have been completely renewed. As a result, except for the ceiling in the salon, is she complete ready.

*Jochem Heijermans*

## SPECIFICATIONS

<b>Dimensions</b>	12.85 x 3.95 x 1.20 (m)	<b>Builder</b>	Altena
<b>Built</b>	1992	<b>Cabins</b>	2
<b>Material</b>	Steel	<b>Berths</b>	6
<b>Engine(s)</b>	1 x Perkins M150TI diesel	<b>Hp/Kw</b>	150.00 (hp), 110.40 (kw)
<b>Asking price</b>	sold (VAT )	<b>Lying</b>	elsewhere / Not at sales office

## CONTACT

<b>Sales office</b>	De Valk Belgium	<b>Telephone</b>	+32 586 80 218
<b>Address</b>	1401 PT Nieuwpoort BE	<b>E-mail</b>	belgium@devalk.nl

## DISCLAIMER

These particulars are given in good faith as supplied but cannot be guaranteed.



## GENERAL

<b>Model</b>	ALTENA LOOK 2000
<b>Type</b>	motor yacht
<b>LOA (m)</b>	12,85
<b>LWL (m)</b>	11,90
<b>Beam (m)</b>	3,95
<b>Draft (m)</b>	1,20
<b>Air draft (m)</b>	4,00
<b>Air draft min (m)</b>	3,00
<b>Headroom (m)</b>	2,00
<b>Year built</b>	1992
<b>Builder</b>	Altena
<b>Country</b>	The Netherlands
<b>Displacement (t)</b>	15
<b>Hull material</b>	steel
<b>Hull colour</b>	white
<b>Hull shape</b>	hard chine
<b>Superstructure material</b>	steel
<b>Rubbing strake</b>	steel
<b>Deck material</b>	steel
<b>Deck finish</b>	non-skid paint
<b>Superstructure deck finish</b>	non-skid paint
<b>Cockpit deck finish</b>	non-skid paint
<b>Window frame</b>	aluminium
<b>Window material</b>	tempered glass
<b>Deckhatch</b>	yes
<b>Portholes</b>	aluminium
<b>Insulation</b>	foam
<b>Fuel tank (litre)</b>	steel 400
<b>Fuel tank 2 (litre)</b>	steel 400
<b>Level indicator (fuel tank)</b>	yes



<b>Freshwater tank (litre)</b>	stainless steel 600
<b>Level indicator (freshwater)</b>	Votronic
<b>Wheel steering</b>	hydraulic
<b>Extra info</b>	Cockpit frames and windows 2016

## ACCOMMODATION

<b>Cabins</b>	2
<b>Berths</b>	6
<b>Interior</b>	teak
<b>Floor</b>	cork (2006)
<b>Aft deck</b>	yes
<b>Saloon</b>	yes
<b>Headroom saloon (m)</b>	2.00
<b>Heating</b>	calorgas ducted hot air (defect)
<b>Dinette</b>	yes
<b>Dinette to convert into berth</b>	yes
<b>Opening door to aft deck</b>	yes
<b>Galley</b>	yes
<b>Countertop</b>	wood
<b>Sink</b>	stainless steel
<b>Cooker</b>	calor gas 4 burner
<b>Extractor</b>	(2016)
<b>Gas alarm</b>	yes
<b>Fridge</b>	With freezing compartment
<b>Hot water system</b>	220V + engine Boiler 60l (2016)
<b>Water pressure system</b>	electrical (2016)
<b>Coffee maker</b>	yes
<b>Owners cabin</b>	double bed Mattress (2017)
<b>Wardrobe</b>	drawers and shelves
<b>Bathroom</b>	shared
<b>Toilet</b>	shared



<b>Toilet system</b>	manual
<b>Wash basin</b>	at the toilet
<b>Shower</b>	shared
<b>Guest cabin 1</b>	twin single
<b>Wardrobe</b>	drawers and shelves

## MACHINERY

<b>No of engines</b>	1
<b>Make</b>	Perkins
<b>Type</b>	M150TI
<b>HP</b>	150
<b>kW</b>	110.40
<b>Fuel</b>	diesel
<b>Year installed</b>	2017
<b>Maximum speed (kn)</b>	9
<b>Cruising speed (kn)</b>	7
<b>Engine hours</b>	215
<b>Drive</b>	shaft
<b>Engine controls</b>	bowden cable
<b>Gearbox</b>	hydraulic
<b>Bowthruster</b>	electric 8pk
<b>Exhaust</b>	watercooled
<b>Propeller type</b>	fixed
<b>Shaft lubrication</b>	grease
<b>Electric bilge pump</b>	yes
<b>Electrical installation</b>	24V/220V (2017)
<b>Batteries</b>	yes
<b>Start battery</b>	2x 12V/225Ah (2017)
<b>Service battery</b>	2x 12V/230Ah (2017)
<b>Battery monitor</b>	Victron Color Control
<b>Battery charger/inverter</b>	Victron Quattro 24V/3000Ah/70Ah



Solar panel	(2017)
Shorepower	with cable
Insulation transformer	Victron

## NAVIGATION

Depth sounder	Nasa Marine (2016)
VHF	yes
Rudder angle indicator	(2016)
Navigation lights	yes

## EQUIPMENT

Cockpit cover	(2017) with windows
Winter cover	(2021) without windows
Cockpit cushions	yes
Cockpit table	yes
Bathing platform	yes
Boarding ladder	yes
Anchor	yes
Windlass	manual
Sea railing	stainless steel
Grab rail (superstructure)	stainless steel
Railing side opening gates	2x
Pushpit	yes
Pulpit	yes
Wiper	yes
Horn	electric
Fenders	yes
Mooring lines	yes
Fire extinguisher	yes





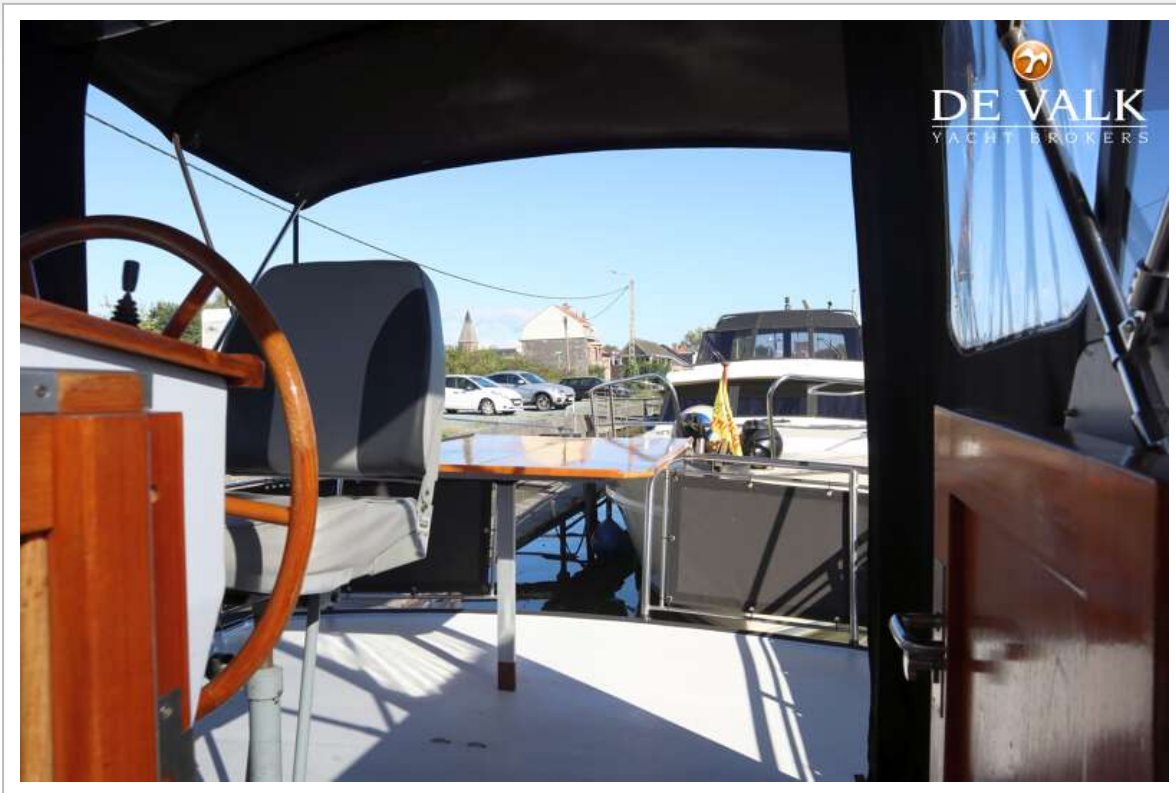


# ALTENA LOOK 2000





# ALTENA LOOK 2000



# ALTENA LOOK 2000





# ALTENA LOOK 2000



# ALTENA LOOK 2000





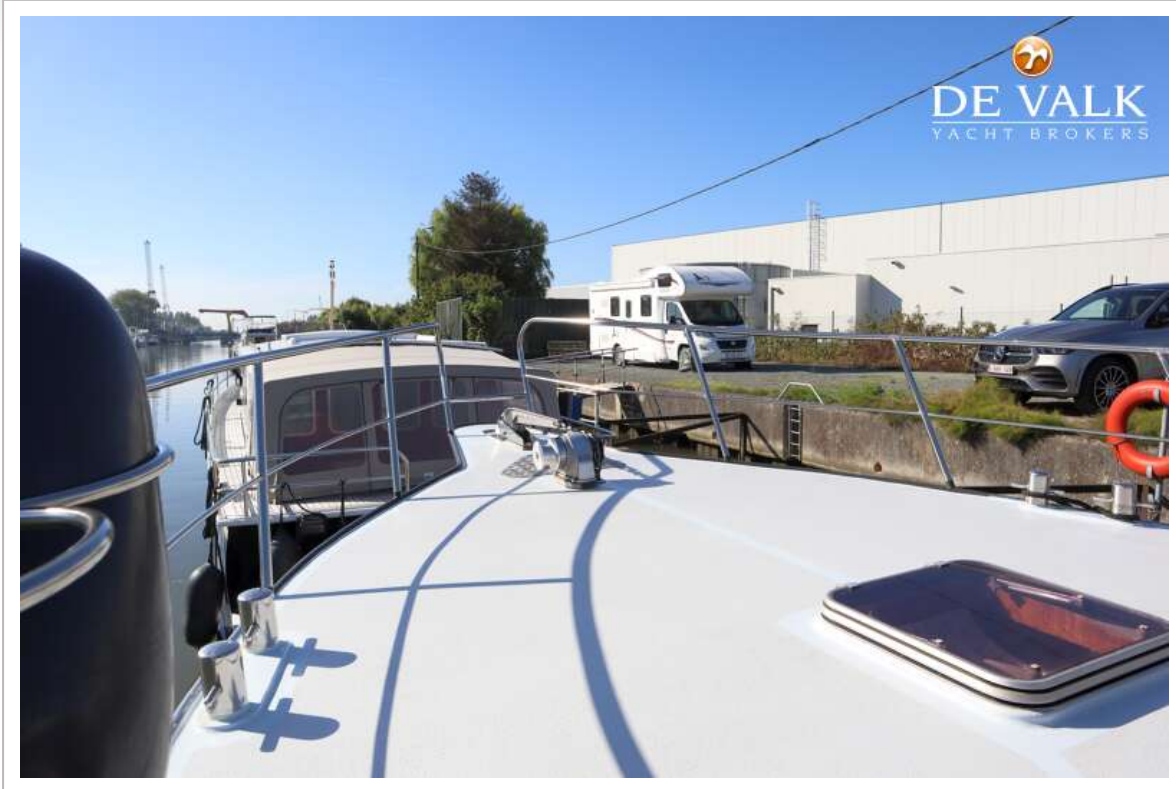




# ALTENA LOOK 2000



# ALTENA LOOK 2000





# ALTENA LOOK 2000



# ALTENA LOOK 2000





# ALTENA LOOK 2000





# ALTENA LOOK 2000



# ALTENA LOOK 2000

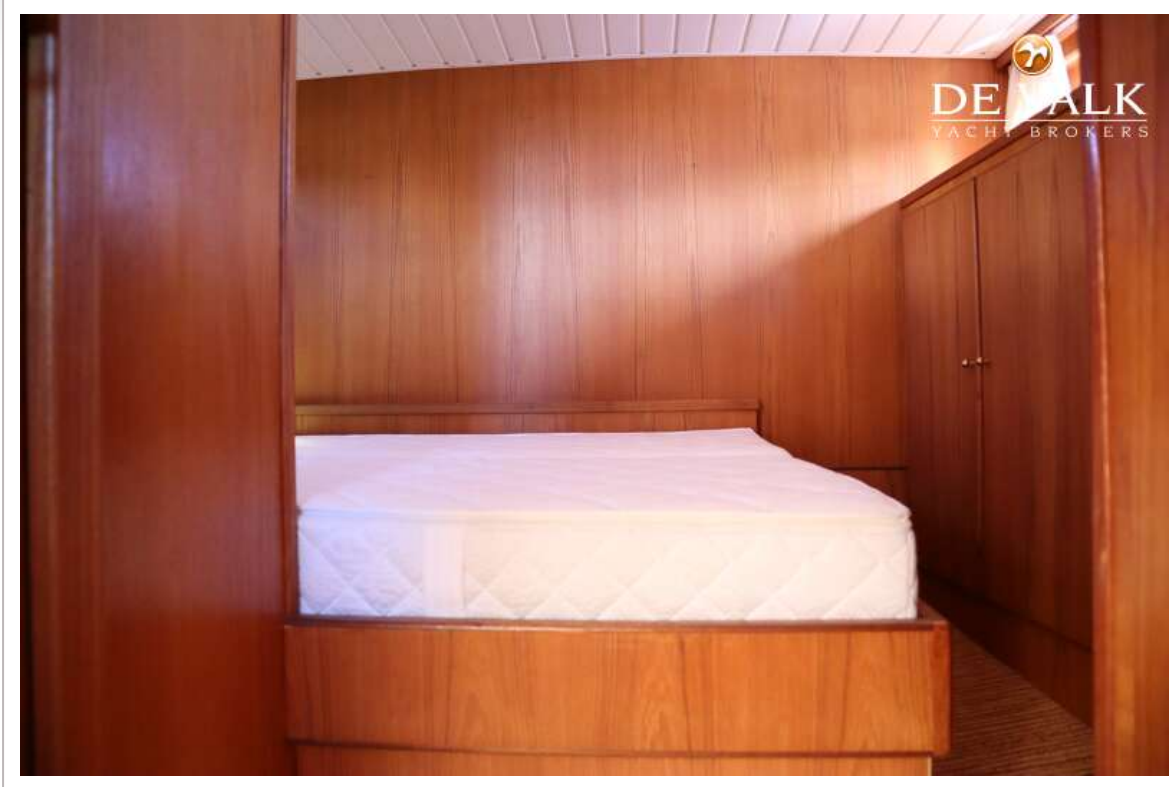




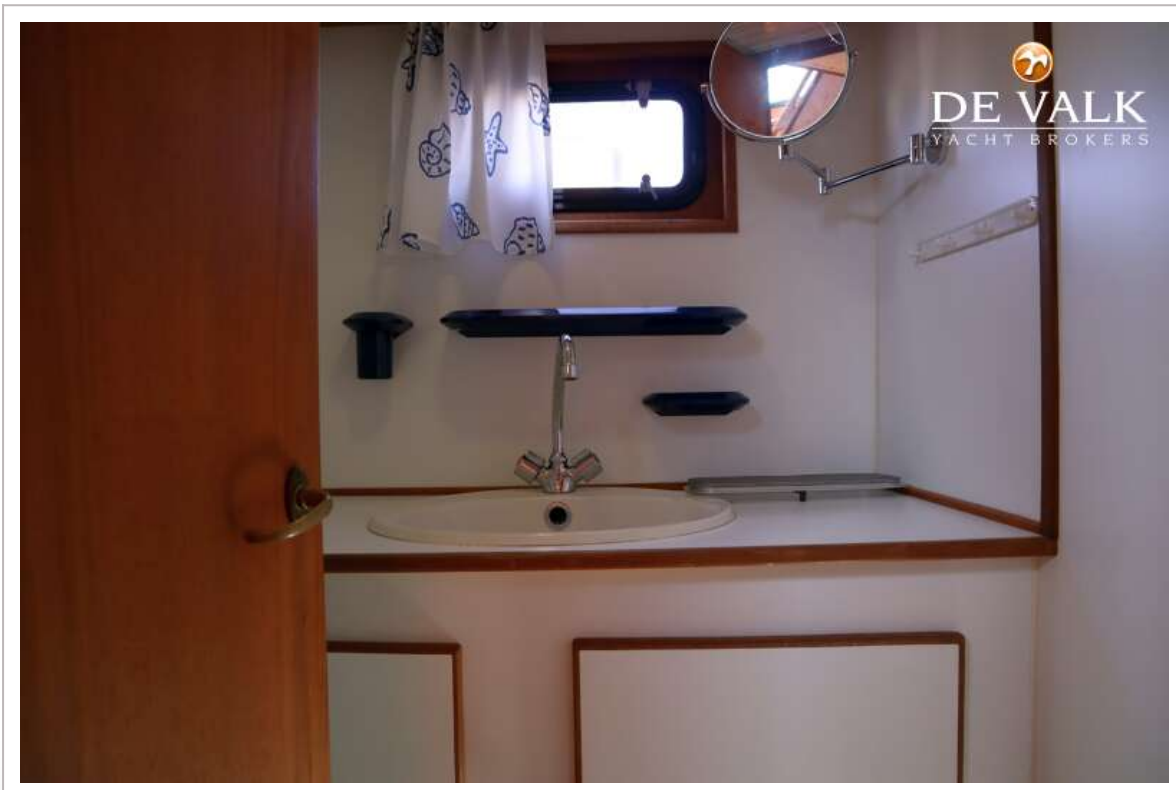
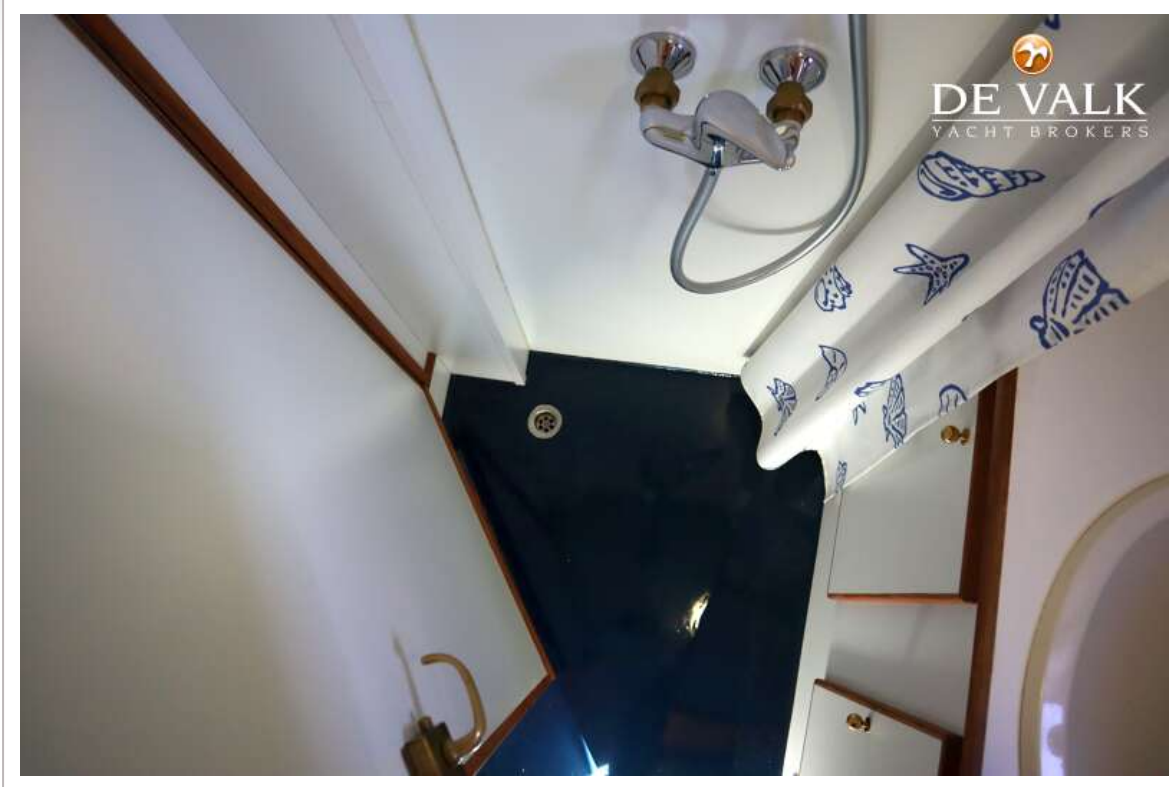
# ALTENA LOOK 2000



# ALTENA LOOK 2000



# ALTENA LOOK 2000



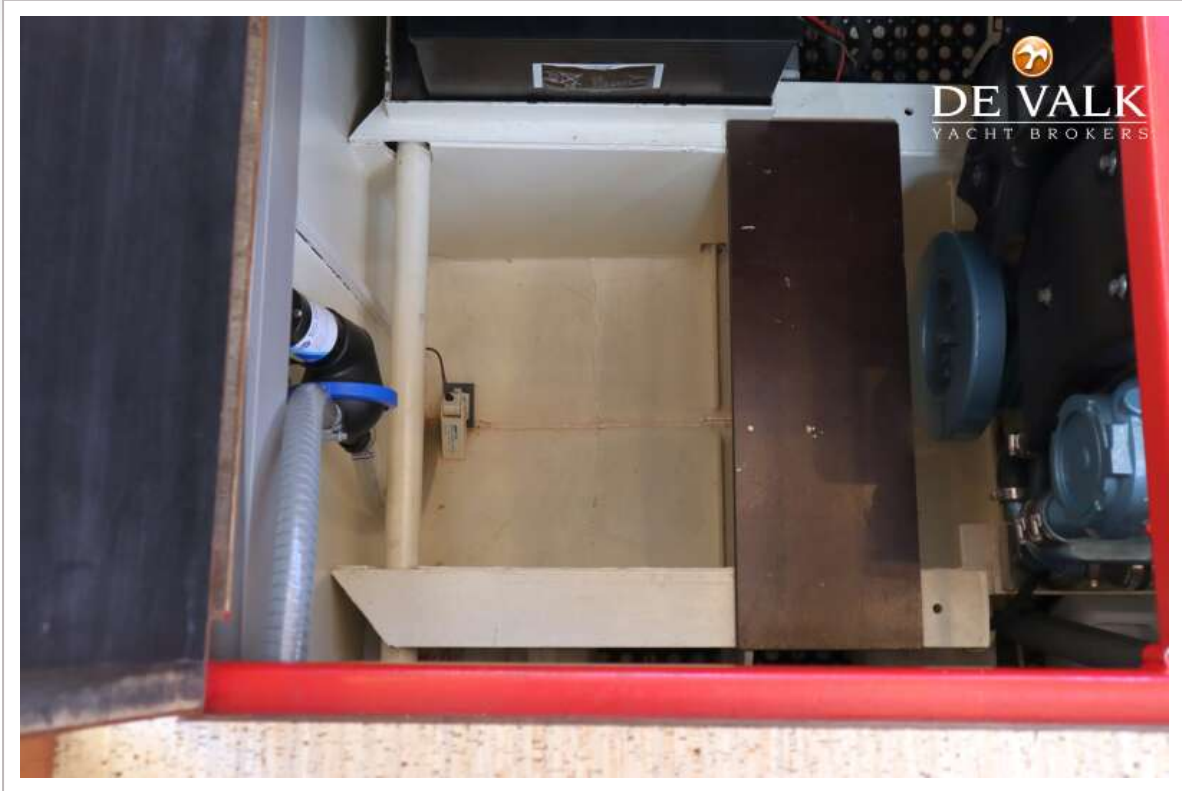


# ALTENA LOOK 2000



# ALTENA LOOK 2000







# ALTENA LOOK 2000

