



DE VALK  
YACHT BROKERS



BEISTER CUSTOM 45



DE VALK  
YACHT BROKERS

## BROKER'S COMMENTS

This Beister Custom 45 has been recently upgraded with brand new masts. The new masts, combined with the yacht's robust build and balanced rig, ensure smooth handling and greater safety in offshore sailing. Below deck, the yacht boasts a well-designed interior, with a focus on comfort and practicality. High-quality finishes and thoughtful storage make the living quarters functional. This Beister Custom 45 is being auctioned online, bidding is only possible through Bright Auctions. All auction information can be found at:

<https://brightauctions.com/en/lot-details/21029/>

*Stein Dubbeldam*

## SPECIFICATIONS

<b>Dimensions</b>	15.10 x 3.50 x 1.80 (m)	<b>Builder</b>	Beister yachtwerf Norderney
<b>Built</b>	1973	<b>Cabins</b>	2
<b>Material</b>	Steel	<b>Berths</b>	6
<b>Engine(s)</b>	1 x Mercedes OM615 diesel	<b>Hp/Kw</b>	54.00 (hp), 39.74 (kw)
<b>Asking price</b>	€ 25.000 (VAT Exempt)	<b>Lying</b>	at sales office

## CONTACT

<b>Sales office</b>	De Valk Hindeloopen B.V.	<b>Telephone</b>	+31 514 52 40 00
<b>Address</b>	Oosterstrand 1 8713 JS Hindeloopen NL	<b>E-mail</b>	hindeloopen@devalk.nl

## DISCLAIMER

These particulars are given in good faith as supplied but cannot be guaranteed.



## GENERAL

<b>Model</b>	BEISTER CUSTOM 45
<b>Type</b>	sailing yacht
<b>LOA (m)</b>	15,10
<b>LWL (m)</b>	11,10
<b>Beam (m)</b>	3,50
<b>Draft (m)</b>	1,80
<b>Air draft (m)</b>	17,50
<b>Headroom (m)</b>	1,95
<b>Year built</b>	1973
<b>Builder</b>	Beister yachtwerf Norderney
<b>Country</b>	Germany
<b>Displacement (t)</b>	16
<b>Ballast (tonnes)</b>	lead in steel   5,5 t.
<b>Hull material</b>	steel
<b>Hull colour</b>	white
<b>Hull thickness (mm)</b>	8 / 6 mm
<b>Hull shape</b>	S-bilged
<b>Superstructure material</b>	steel
<b>Superstructure (mm)</b>	4 mm
<b>Deck plate thickness (mm)</b>	4 mm
<b>Deck material</b>	steel
<b>Deck finish</b>	teak
<b>Superstructure deck finish</b>	Treadmaster
<b>Cockpit deck finish</b>	teak
<b>Dorades</b>	4x
<b>Window frame</b>	aluminium
<b>Deckhatch</b>	7x
<b>Insulation</b>	glasswool   3-5 cm
<b>Fuel tank (litre)</b>	stainless steel   375 ltr.   double fuel filter system from Separ
<b>Level indicator (fuel tank)</b>	yes



# BEISTER CUSTOM 45

Fuel daytank (litre)	stainless steel   80 ltr.
Freshwater tank (litre)	1x approx. 300 ltr. + 1x approx 100 ltr.
Blackwater tank (litre)	Approx 240 ltr.
Blackwater tank extraction	pump
Wheel steering	hydraulic
Inside helm position	yes
Outside helm position	yes
Emergency tiller	yes

## ACCOMMODATION

Cabins	2
Berths	6
Interior	mahogany
Floor	teak and holly
Saloon	yes
Headroom saloon (m)	1,90 / 2,10 mtr.
Heating	diesel ducted hot air   Webasto
Navigation center	yes
Chart table	yes
Galley	yes
Countertop	wood
Sink	stainless steel   double
Cooker	petroleum   Force10   3 burner
Oven	In cooker
Fridge	yes
Hot water system	220V + engine   Boiler 40 ltr.
Water pressure system	electrical   Jabsco
Manual and/or foot pump	yes
Owners cabin	double bed
Bed length (m)	2 mtr.
Wardrobe	hanging/drawers/shelves



# BEISTER CUSTOM 45

Guest cabin 1	yes
Bed length (m)	2 mtr.
Wardrobe	hanging and shelves

## MACHINERY

No of engines	1
Make	Mercedes
Type	OM615
HP	54
kW	39.74
Fuel	diesel
Engine cooling system	freshwater heat exchanger
Drive	shaft
Engine controls	bowden cable
Gearbox	hydraulic   Velvet
Bowthruster	hydraulic   10 Hp
Exhaust	watercooled
Propeller type	fixed   bronze
Propeller blades	3
Propeller shaft material	stainless steel
Manual bilge pump	Whale
Electric bilge pump	Jabsco
Electrical installation	12 & 220 Volt
Start battery	1x 50Ah
Service battery	2x 115 Ah
Battery charger	yes
Shorepower	with cable
Extra info	1 alternator Bosch 25A 1 shaft generator Bosch 14V, 13A

## NAVIGATION

Compass	C. Plath
---------	----------



Electric compass	Autohelm Fluxgate for Autopilot
Depth sounder/log	Raymarine I50
Windset	Raymarine I60
VHF	Icom IC-M59
Autopilot	Autohelm 7000
Radar	Raymarine RD418D
Plotter/GPS	Seiwa Barracuda IGPS
Radar/GPS/plotter	Raymarine E90W
Navigation lights	yes
Searchlight	yes
Extra info	all operating instructions are complete and neatly filed

## EQUIPMENT

Sprayhood	yes
Boarding ladder	yes
Anchor	CQR Plough
Anchor chain	10mm   70 mtr.
Anchor 2	Danforth
Windlass	hydraulic   10 Hp
Capstan	yes
Sea railing	yes
Grab rail (superstructure)	teak
Pushpit	yes
Pulpit	yes
Radar reflector	yes
Fenders	yes
Mooring lines	yes
Spare parts	yes
Tools	yes
Radio	yes
Clock - barometer	yes



## RIGGING

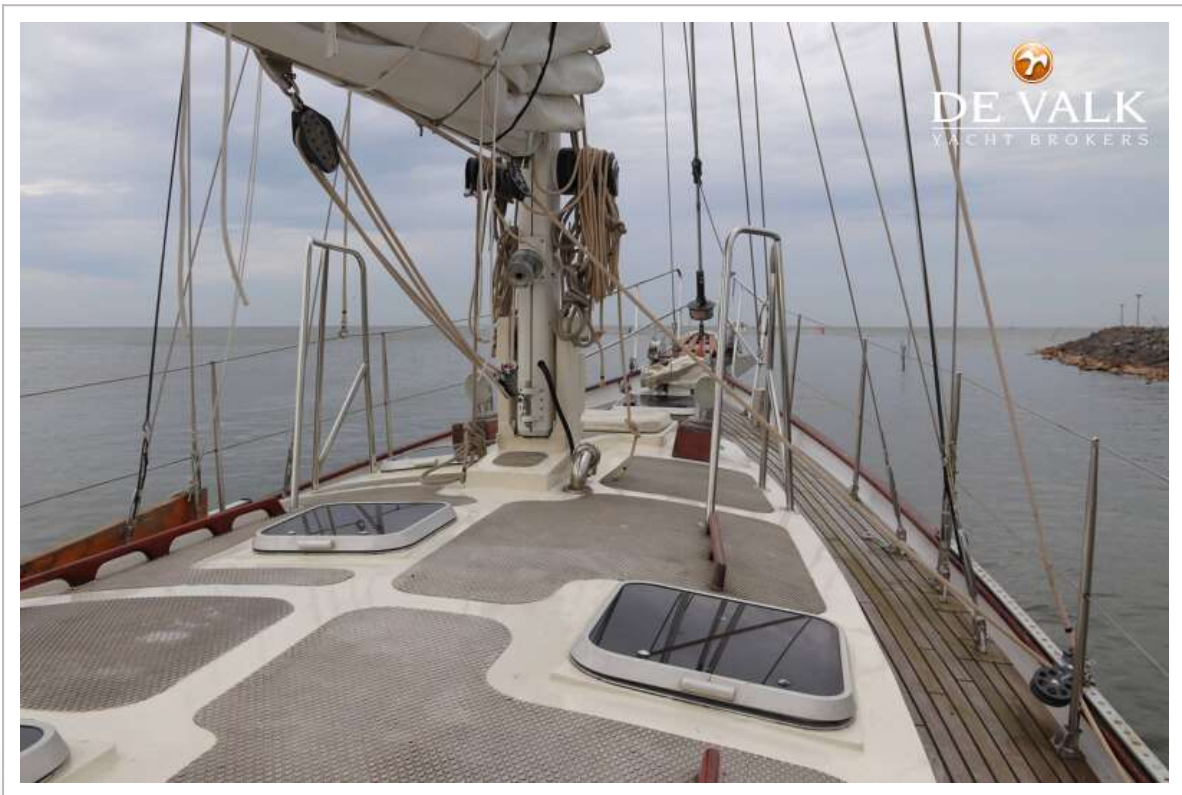
<b>Rigging</b>	ketch
<b>Standing rigging</b>	yes
<b>Brand mast</b>	Sparcraft   new 2022   Rigged by Tuned
<b>Material mast</b>	aluminium coated
<b>Spreaders</b>	2 pair
<b>Mainsail</b>	43m <sup>2</sup>   van Vliet
<b>Mainsail cover</b>	yes
<b>Fully battened mainsail</b>	yes
<b>Mizzen</b>	12.4 m <sup>2</sup>
<b>Mizzen sailcover</b>	yes
<b>Genoa</b>	55m <sup>2</sup>   Fuling genoa   Dracon 250/345 g/m <sup>2</sup>   Beilken
<b>Genoa furler</b>	Lewmar
<b>Stormjib</b>	10.5 m <sup>2</sup>
<b>Reefing System</b>	slabreefing   3
<b>Boomvang</b>	tackle
<b>Primary sheet winch</b>	2x Lewmar 40
<b>Genoa sheetwinches</b>	2x Lewmar 56
<b>Halyard winches</b>	2x Harken/barbarossa 42.2 on main mast
<b>Reefing winch</b>	1x Arco on main mast
<b>Spi-pole</b>	aluminium



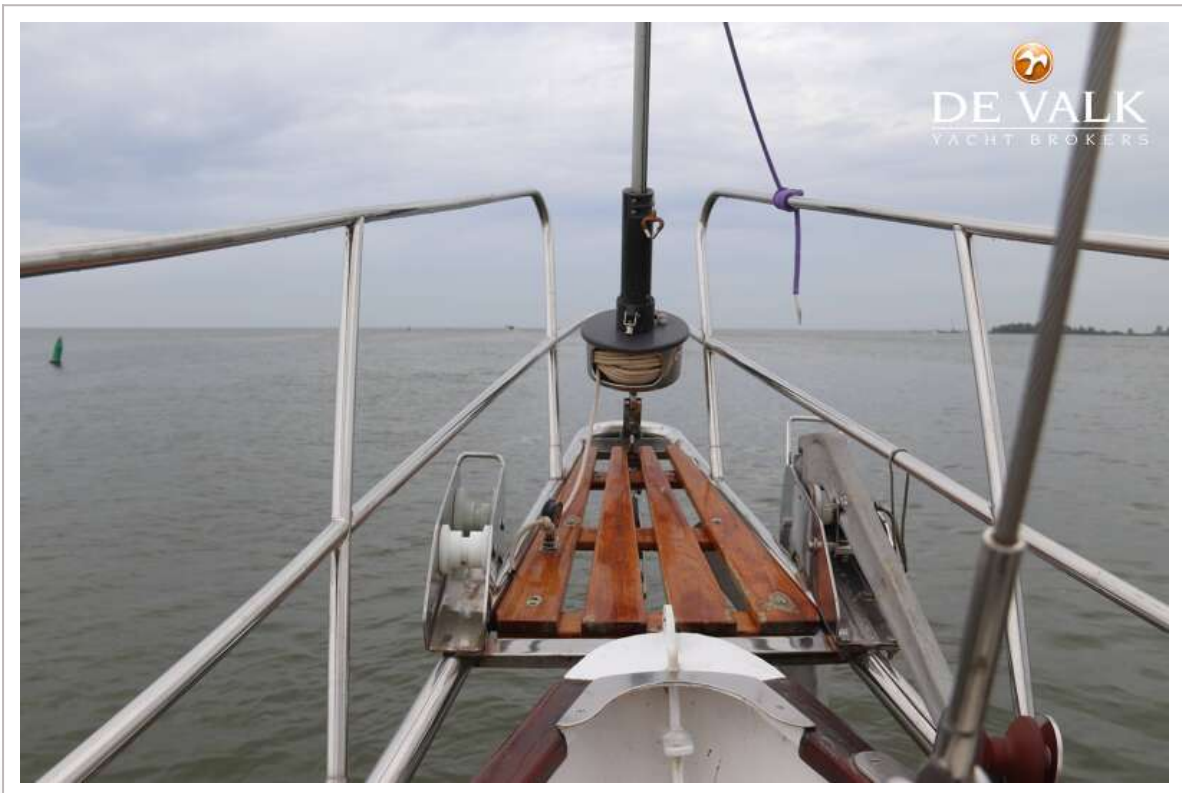
# BEISTER CUSTOM 45



# BEISTER CUSTOM 45



# BEISTER CUSTOM 45



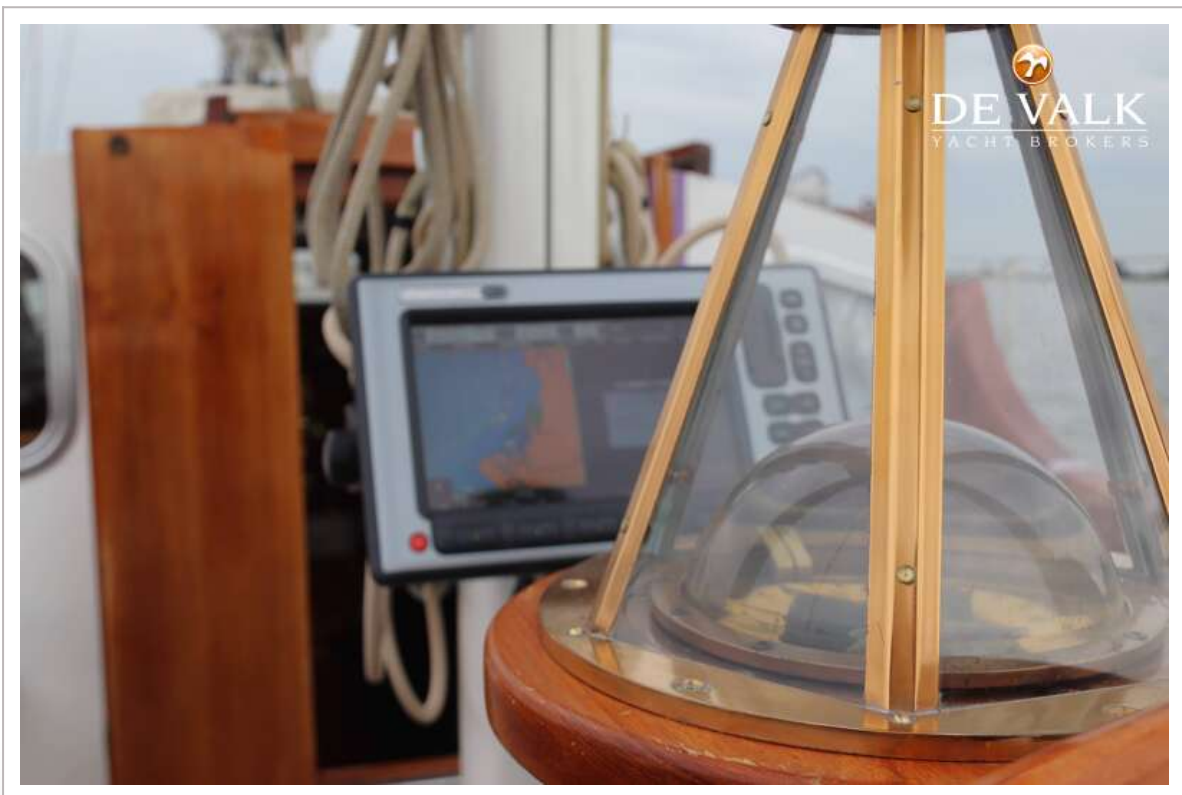
# BEISTER CUSTOM 45



# BEISTER CUSTOM 45



# BEISTER CUSTOM 45



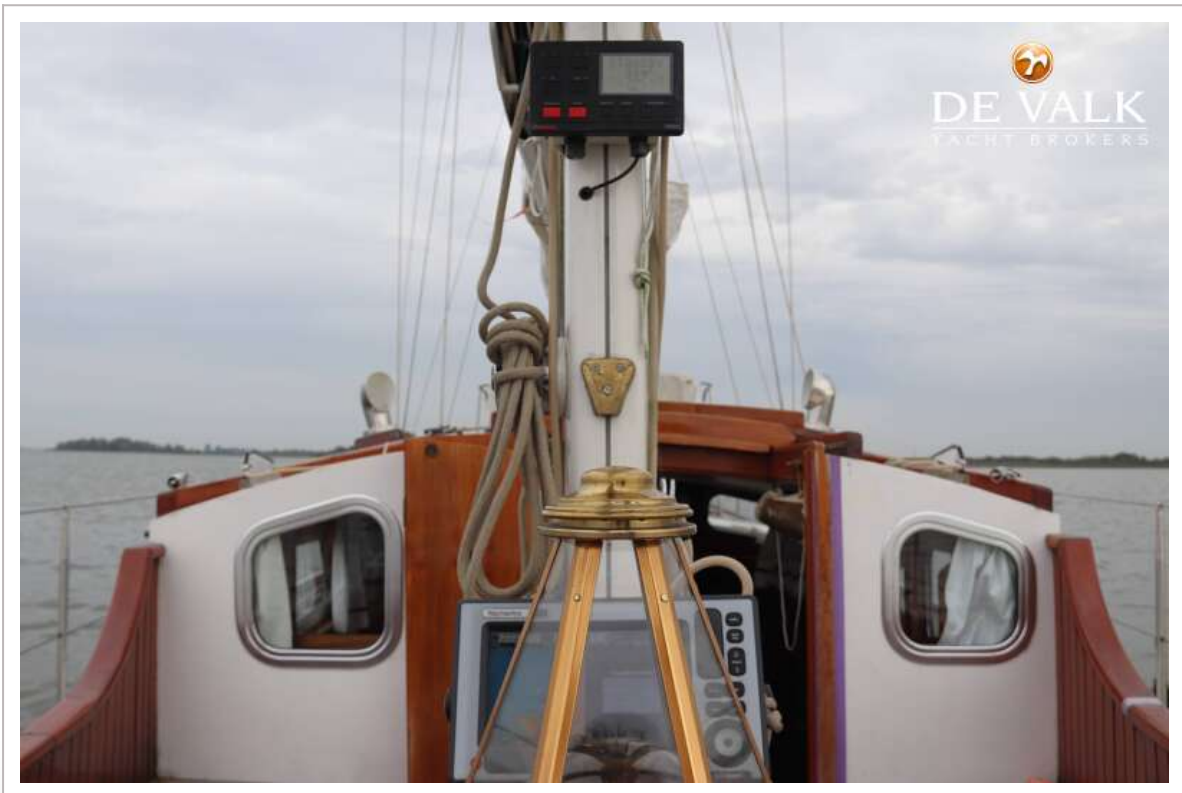
# BEISTER CUSTOM 45



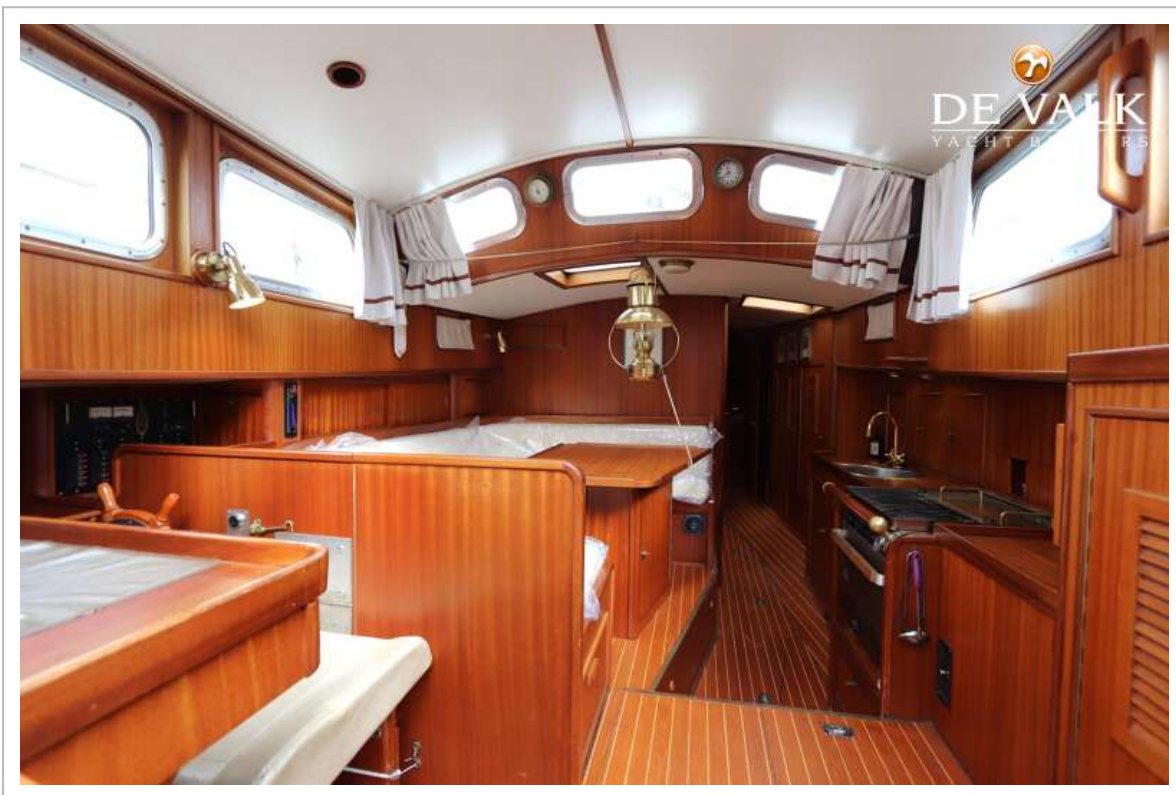
# BEISTER CUSTOM 45



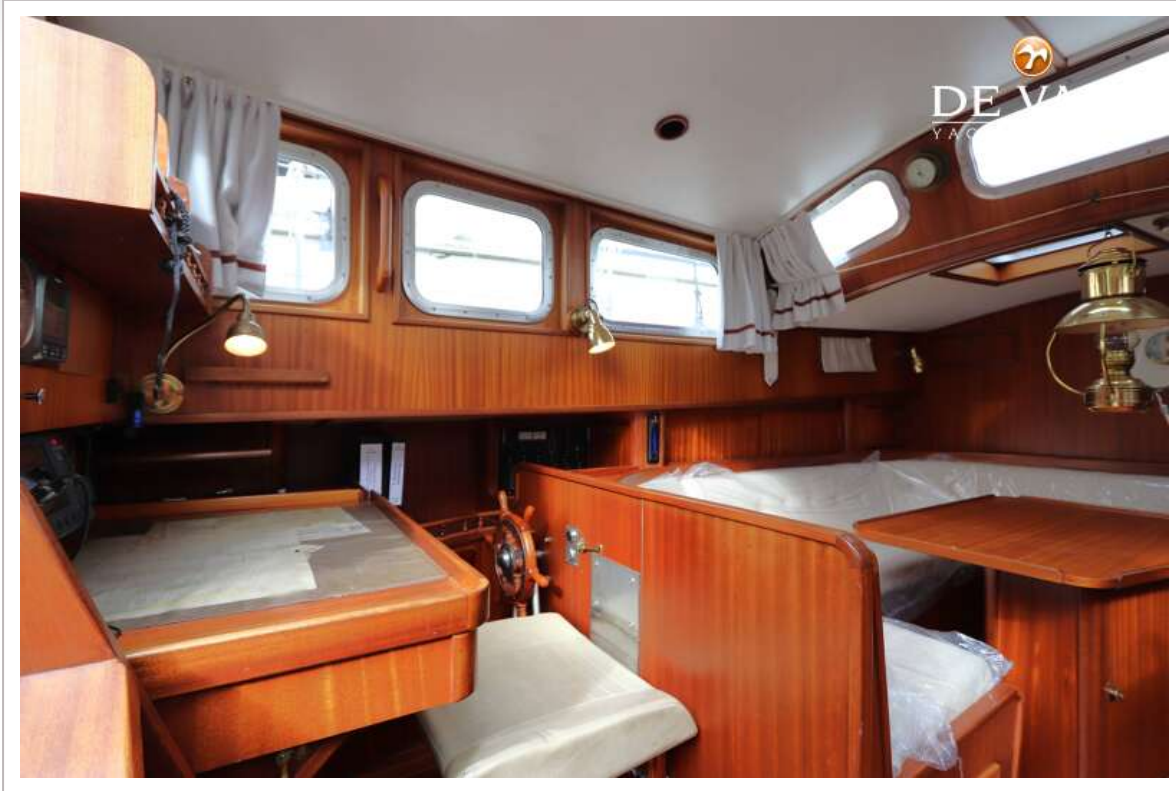
# BEISTER CUSTOM 45



# BEISTER CUSTOM 45



# BEISTER CUSTOM 45



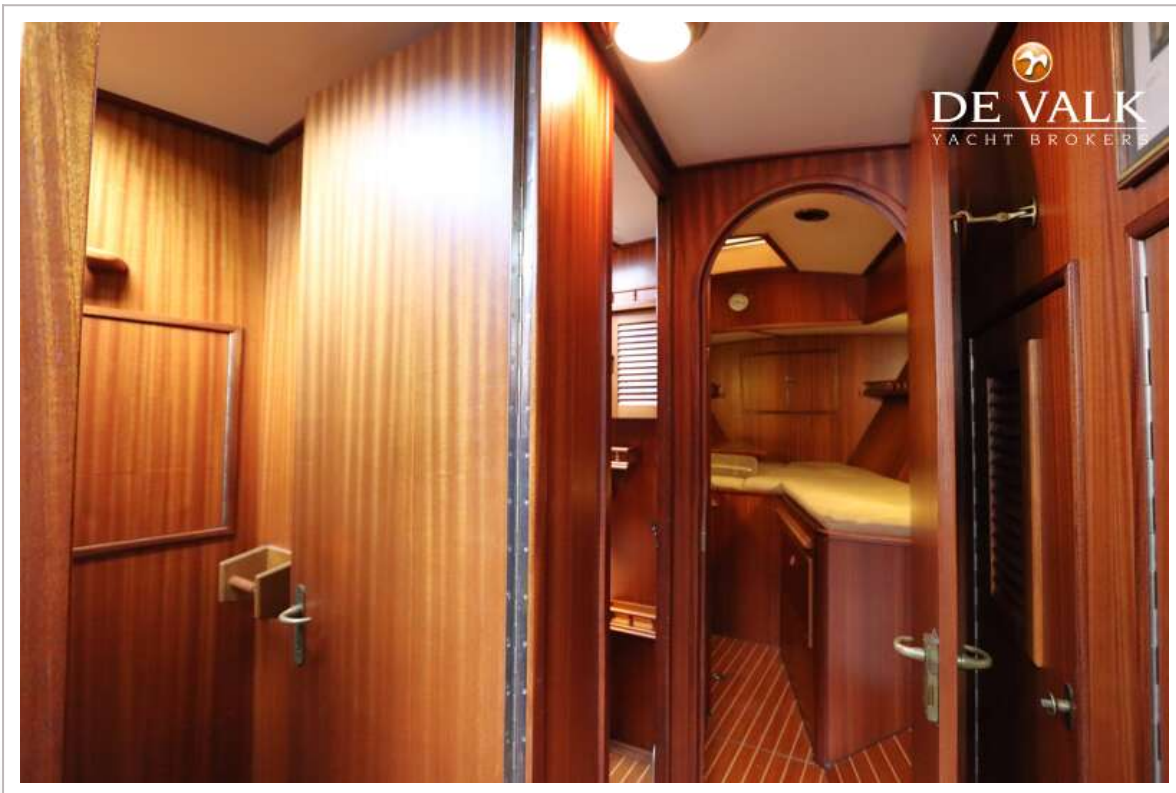
# BEISTER CUSTOM 45



# BEISTER CUSTOM 45



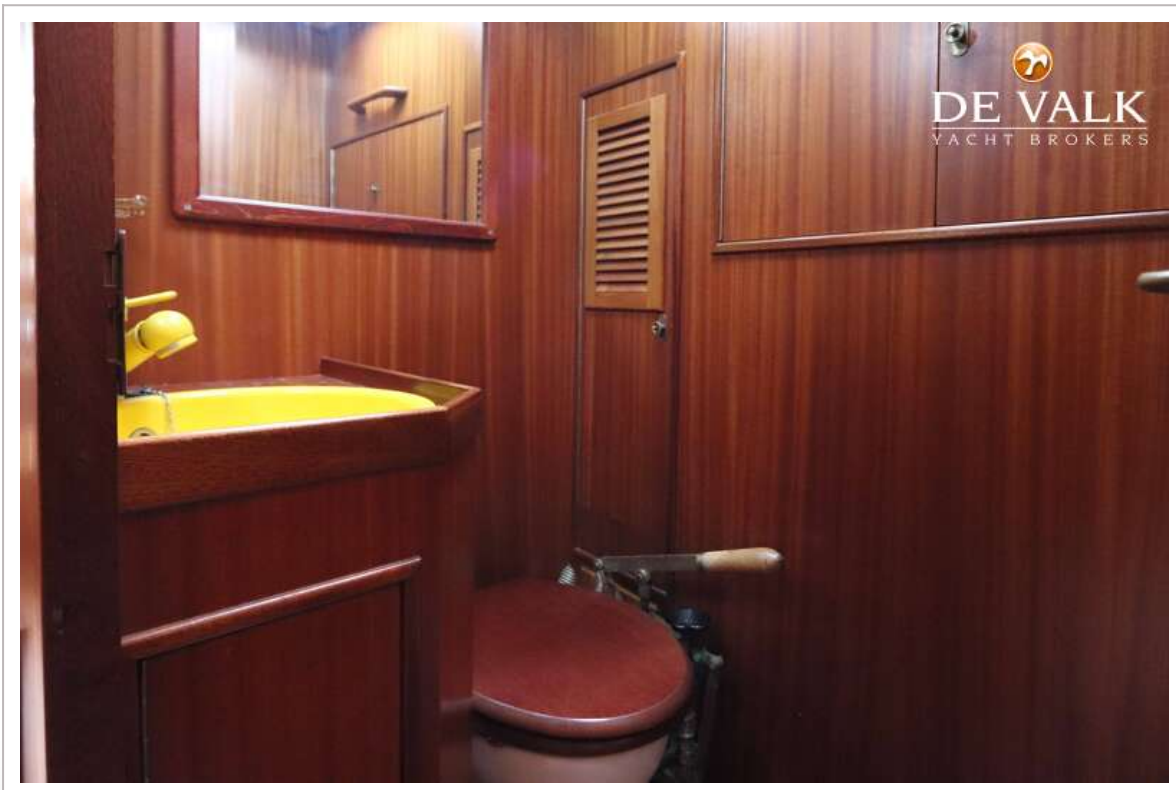
# BEISTER CUSTOM 45



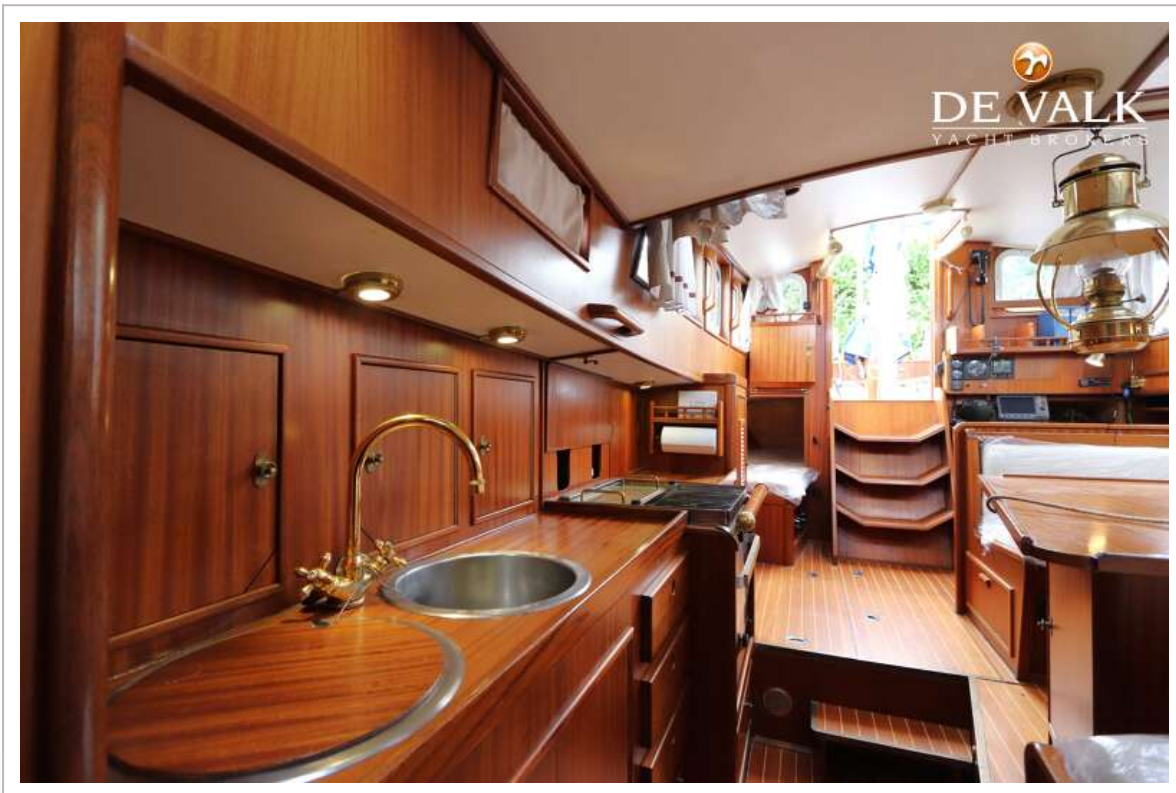
# BEISTER CUSTOM 45



# BEISTER CUSTOM 45



# BEISTER CUSTOM 45



# BEISTER CUSTOM 45



# BEISTER CUSTOM 45

