



DE VALK
YACHT BROKERS



MOODY 336



DE VALK
YACHT BROKERS

BROKERAGE | CHARTER | BERTHS | FINANCE | INSURANCE | YACHT MANAGEMENT

BROKER'S COMMENTS

The Moody 336 is a spacious design, although with an aft cockpit rather than the brand's more usual centre cockpit. The quarter cabin arrangement is different to most, with the double bunk located under the cockpit and therefore more standing, lounging and storage space than might otherwise be expected. There's also a large saloon, very good galley and navigation station and decent-sized fore cabin.

Cristián Figari Jullian

SPECIFICATIONS

Dimensions	10.21 x 3.54 x 1.68 (m)	Builder	Marine Projects Lda
Built	1989	Cabins	2
Material	GRP	Berths	5
Engine(s)	1 x Volvo Penta 868100 diesel	Hp/Kw	28.00 (hp), 20.58 (kw)
Asking price	sold (VAT)	Lying	at sales office

CONTACT

Sales office	De Valk Costa Blanca	Telephone	+34 96 50 21 569
Address	Costa Blanca Region 03730 Javea Alicante ES	E-mail	costablanca@devalk.nl

DISCLAIMER

These particulars are given in good faith as supplied but cannot be guaranteed.



GENERAL

Model	MOODY 336
Type	sailing yacht
LOA (m)	10,21
LWL (m)	8,76
Beam (m)	3,54
Draft (m)	1,68
Air draft (m)	13,00
Headroom (m)	1,80
Year built	1989
Launched	1990
Builder	Marine Projects Lda
Country	United Kingdom
Designer	Bill Dixon
Displacement (t)	5,7
Ballast (tonnes)	1809
Gross tonnage	9090
CE norm	NA
Hull material	GRP
Hull colour	white
Hull shape	V-shaped hull
Keel type	fin keel Bolted (need some work)
Superstructure material	GRP
Deck material	GRP
Deck finish	non-skid moulded in
Superstructure deck finish	non-skid moulded in
Cockpit deck finish	non-skid paint
Antifouling (year)	2020
Window frame	aluminium
Window material	polycarbonate
Deckhatch	1



Portholes	brass
Fuel tank (litre)	steel 110
Level indicator (fuel tank)	Gauge
Freshwater tank (litre)	polyethylene 200
Level indicator (freshwater)	Gauges
Blackwater tank (litre)	polyethylene 25
Wheel steering	cable steering In cockpit
Outside helm position	cable steering
Emergency tiller	yes
More info on hull	No Osmosis
More info on paintwork	In very good condition

ACCOMMODATION

Cabins	2
Berths	5
Interior	teak
Layout	FW & Aft cabin
Floor	teak
Saloon	yes
Headroom saloon (m)	1,80
Heating	diesel ducted hot air Espare D3L
Chart table	yes
Aft Cabin	Owners cabin
Convertible berth	In saloon
Galley	L-shape
Countertop	corian
Sink	stainless steel Double
Cooker	Plastimo
Oven	Plastimo
Fridge	Frigo-Mat (2013)
Hot water system	220V + engine Boiler



Water pressure system	electrical
Crockery	yes
Owners cabin	double bed Aft
Bed length (m)	2,00
Wardrobe	hanging and shelves
Toilet	shared
Toilet system	manual
Wash basin	at the toilet
Shower	shared Seperate from toilet
Guest cabin 1	v-bed FW
Bed length (m)	2,00
Wardrobe	yes

MACHINERY

No of engines	1
Make	Volvo Penta
Type	868100
HP	28
kW	20.58
Fuel	diesel
Year installed	1989
Year of overhaul	2001
Maximum speed (kn)	6,5
Cruising speed (kn)	5
Consumption (l/hr)	1
Range (nm)	200
Engine hours	6200
Engine cooling system	seawater
Drive	shaft
Shaft seal	yes
Engine controls	yes



Gearbox	mechanical
Exhaust	watercooled
Propeller type	folding Maxprop
Propeller blades	2
Propeller shaft material	stainless steel
Shaft lubrication	grease
Manual bilge pump	1 unit
Start battery	Exide 1 x 12V / 75Ah (2021)
Service battery	Exide 2 x 12V / 100 Ah (2021)
Windlass battery	1 x 12V / 100 Ah (2016)
Battery monitor	Gauge
Battery charger	Newman 20 Amp
Solar panel	Solara 110W
Shorepower	with cable 230V
Extra info	New starter motor 2021

NAVIGATION

Compass	Plastimo
Depth sounder	Clipper Echosounder (2015)
Log	Stowe Navigator
Windset	Stowe Windmonitor
Repeater	Navstation
VHF	Cobra MRF55EU (2010)
VHF handheld	Entel HT460MH
Autopilot	Raymarine ST6002 (2008)
Radar	Furuno 1622 (2003)
GPS	Garmin GPS MOB 120
Plotter	Garmin GPS MOB 551 (2014)
EPIRB	GME MT403
Navigation lights	LED



EQUIPMENT

Sprayhood	Marine Blue (new windows)
Cockpit cover	Side Covers
Bimini	Marine Blue
Cockpit cushions	yes
Cockpit table	yes
Boarding ladder	stainless steel
Anchor	Delta (2013)
Anchor chain	40 m (8mm)
Windlass	electrical Quick G100 (2008)
Dinghy	inflatable Turemar 2,3 m
Outboard	Honda 45 (2014) 1,7 kW
Outboard support	yes
Sea railing	wire
Grab rail (superstructure)	teak
Pushpit	yes
Pulpit	yes
Life raft (pers)	container Seacraft (2011)
Last life raft survey	2011
Lifejackets	yes
Safety harness	yes
Lifebuoy	yes
Danbuoy	yes
Safety lines on deck	(2012)
Fenders	yes
Mooring lines	yes
Spare parts	yes
Tools	yes
Radio-cd player	yes
Fire extinguisher	4 units need inspection)



RIGGING

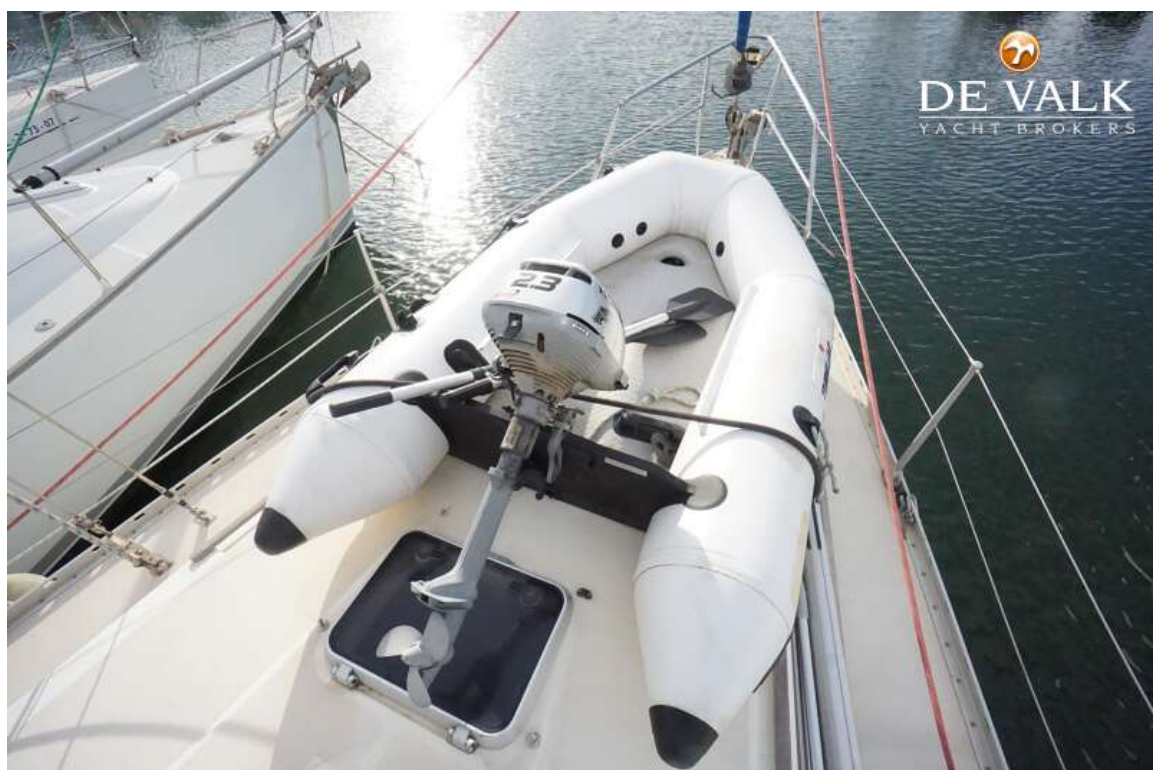
Rigging	fractional with backstays
Standing rigging	wire New 2018
Brand mast	Kemp
Material mast	aluminium
Spreaders	2 units
Battcars	yes
Fully battened mainsail	New 2015
Genoa	New 2015
Genoa furler	Selden
Gennaker	Cruising Shute + Snuffer
Spinnaker	With Snuffer
Stormjib	yes
Reefing System	slabreefing
Boomvang	gasspring
Primary sheet winch	Lewmar 40" 2SP ST
Secondary sheet winch	Lewmar 40" 2SP ST
Halyard winches	Lewmar 40" 2SP ST
Reefing winch	Lewmar 16" ST
Multifunctional winches	Lewmar 16" ST
Spi-pole	aluminium On deck
Extra info	Mast stepped & serviced in 2018



MOODY 336



MOODY 336



MOODY 336



MOODY 336



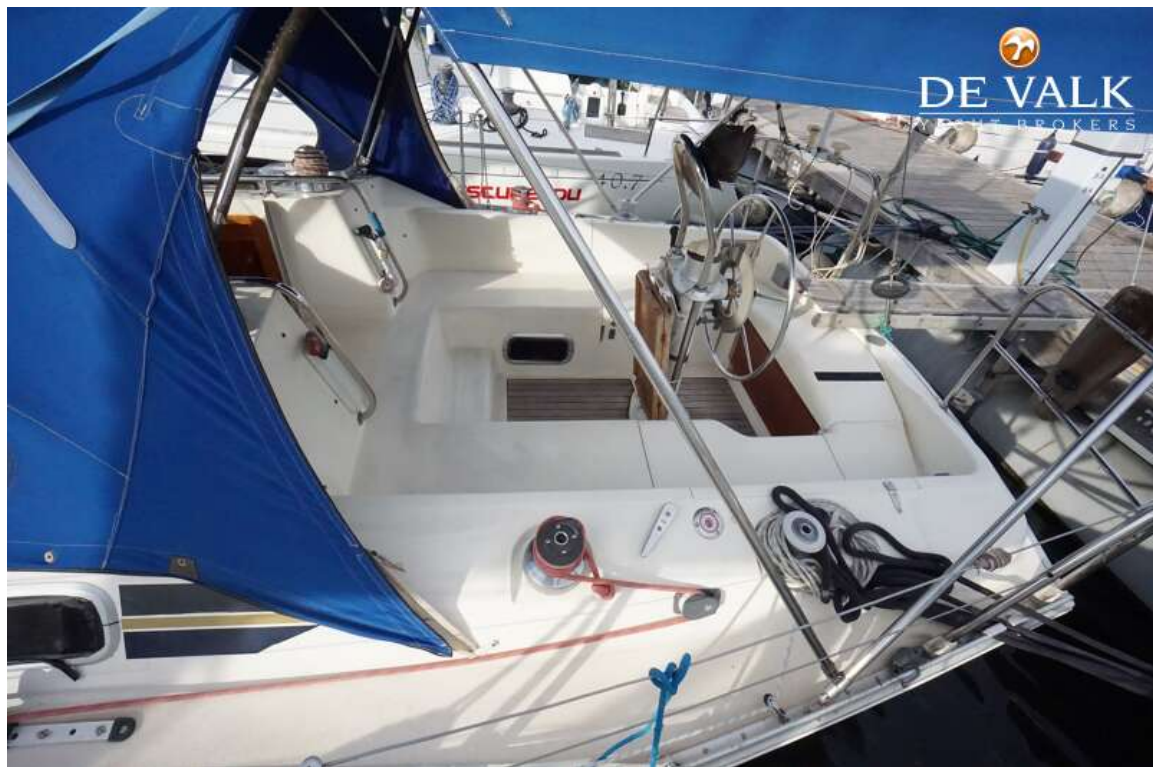
MOODY 336



MOODY 336



MOODY 336



MOODY 336



MOODY 336



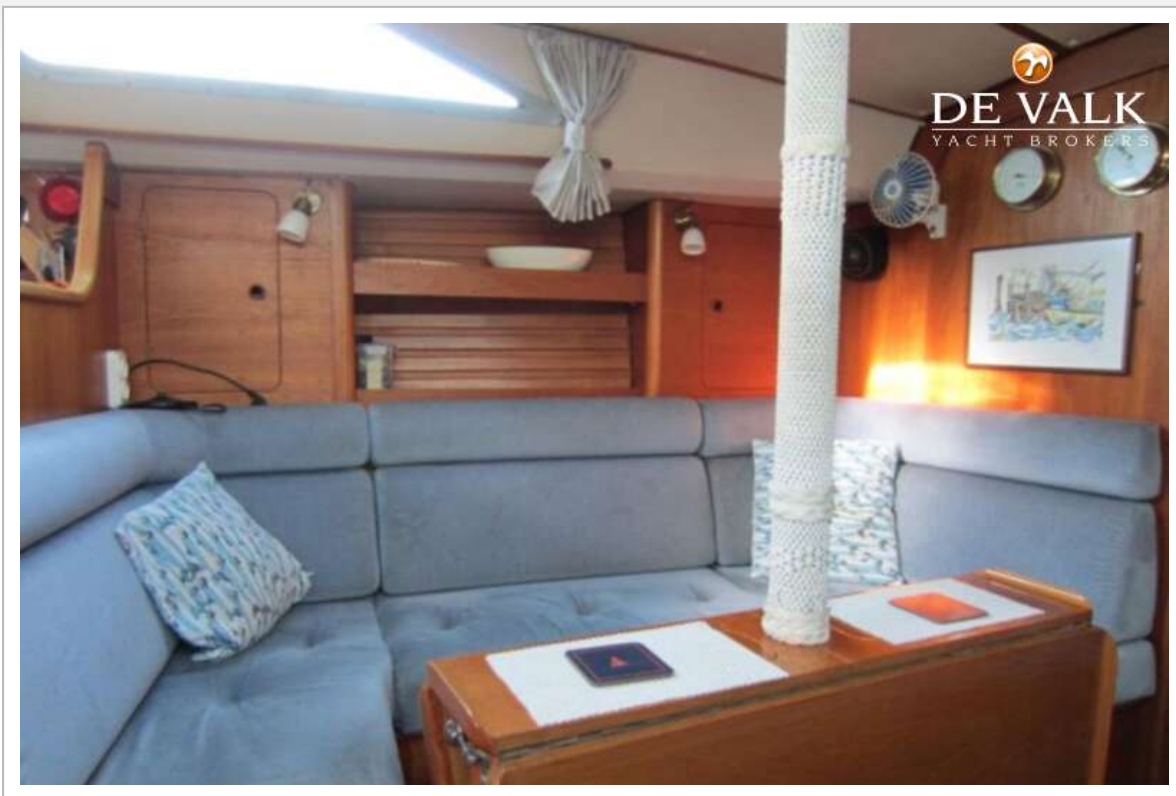
MOODY 336



MOODY 336



MOODY 336



MOODY 336



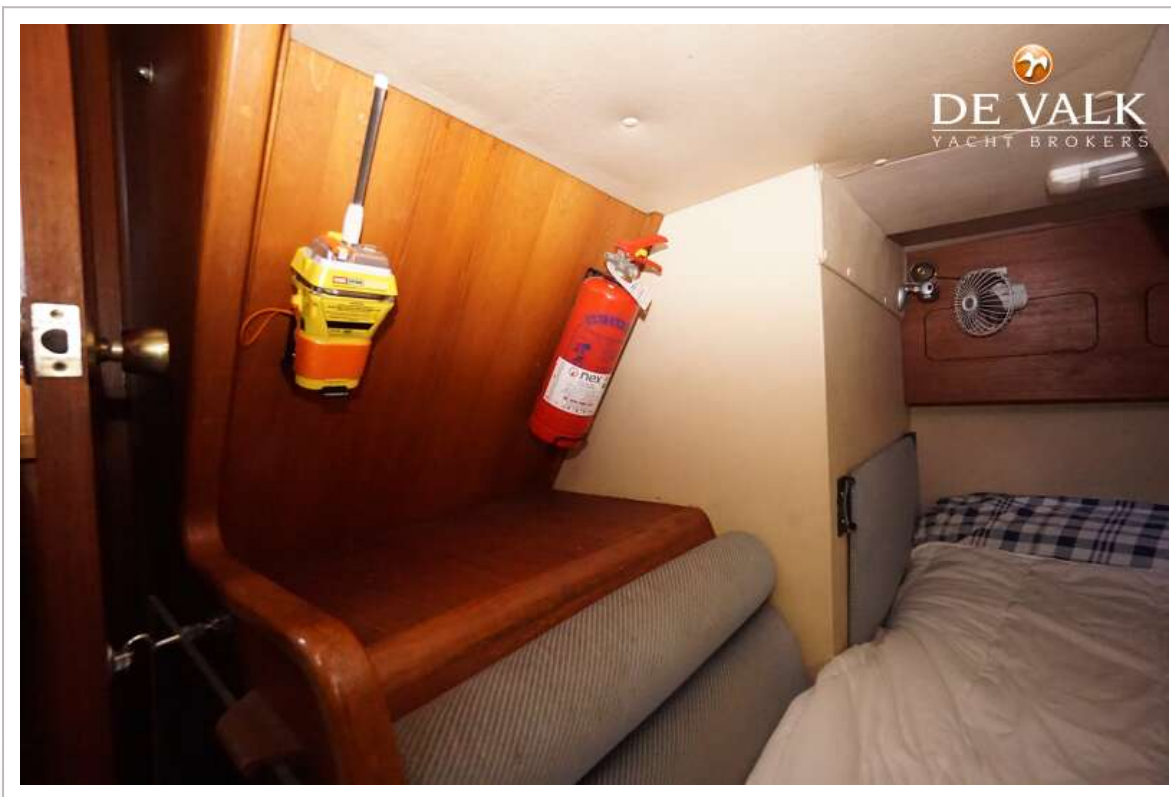
MOODY 336



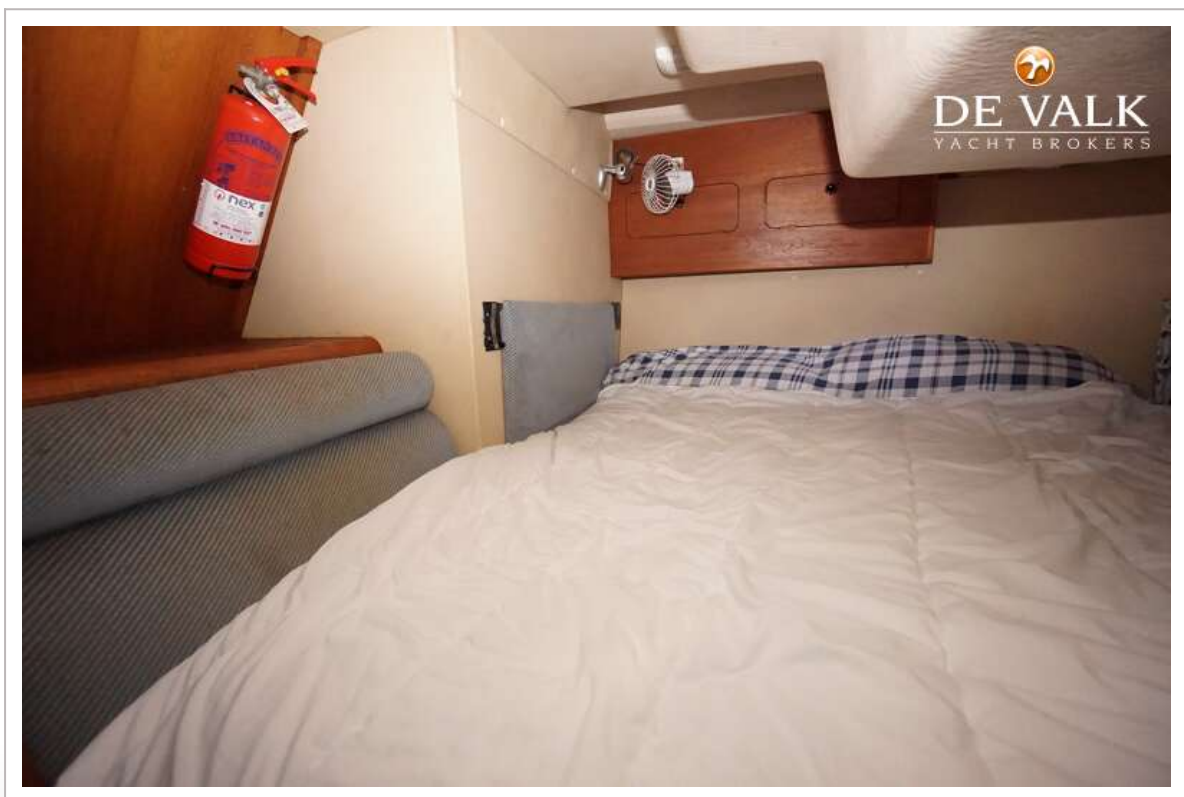
MOODY 336



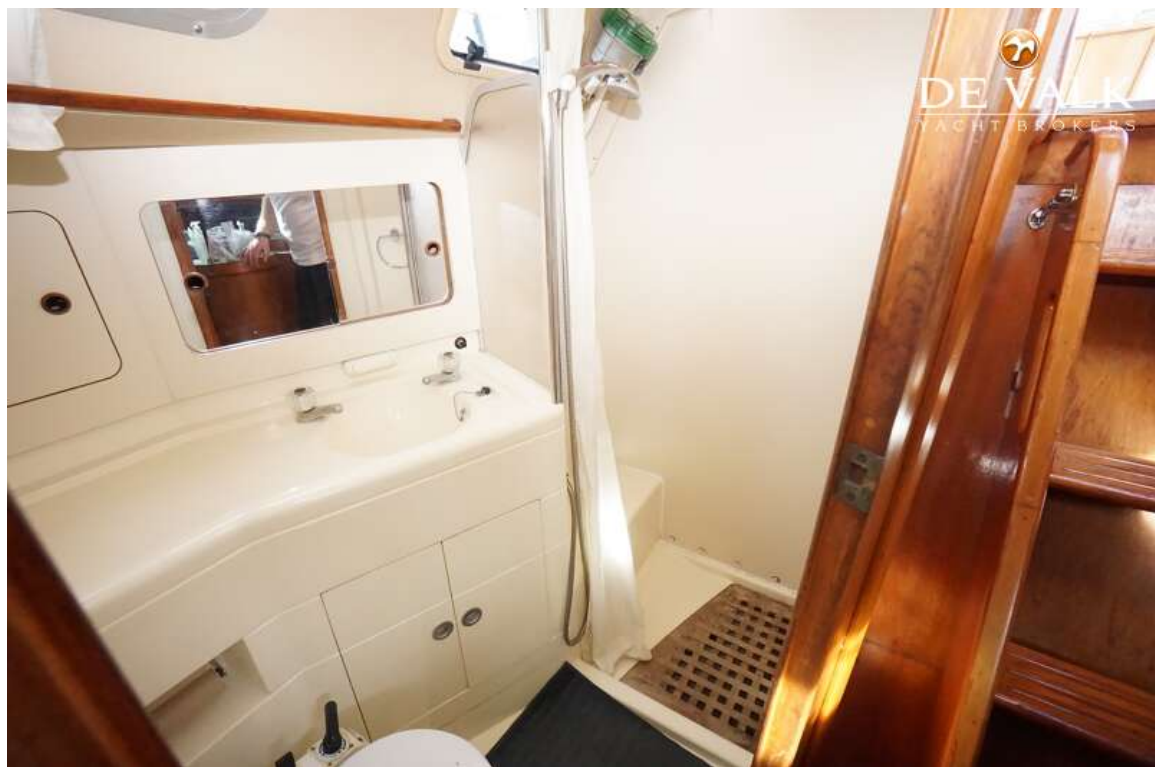
MOODY 336



MOODY 336



MOODY 336



MOODY 336

