



DE VALK
YACHT BROKERS



JEANNEAU SUN ODYSSEY 37



DE VALK
YACHT BROKERS

JEANNEAU SUN ODYSSEY 37

BROKER'S COMMENTS

The Jeanneau Sun Odyssey 37 has good quality, ergonomics and comfort combined into one. An ideal comfortable familycruiser with a bright saloon, 3 cabins and a conventional mainsail with lazyjacks for good sailing performances. This Jeanneau Sun Odyssey 37 is maintained well by the first and only owner and is now ready for a visit at our sales office in Sint Annaland.

Joris van de Rijt

SPECIFICATIONS

Dimensions	11.40 x 3.70 x 1.95 (m)	Builder	Jeanneau
Built	2001	Cabins	3
Material	GRP	Berths	6
Engine(s)	1 x Volvo Penta MD2040 diesel	Hp/Kw	40.00 (hp), 29.44 (kw)
Asking price	sold (VAT)	Lying	at sales office

CONTACT

Sales office	De Valk Sint Annaland B.V.	Telephone	+31 (0)166 601 000
Address	Koelhuisweg 4 4697 RM Sint Annaland NL	E-mail	sintannaland@devalk.nl

DISCLAIMER

These particulars are given in good faith as supplied but cannot be guaranteed.



GENERAL

Model	JEANNEAU SUN ODYSSEY 37
Type	sailing yacht
LOA (m)	11,40
LWL (m)	9,70
Beam (m)	3,70
Draft (m)	1,95
Air draft (m)	16,00
Headroom (m)	1,90
Year built	2001
Launched	2002
Builder	Jeanneau
Country	France
Designer	Jacques Faroux
Displacement (t)	6,2
Ballast (tonnes)	1,48
CE norm	A
Hull material	GRP
Hull colour	white
Hull shape	round-bilged
Keel type	fin keel
Superstructure material	GRP
Rubbing strake	aluminum
Deck material	GRP
Deck finish	non-skid moulded in
Superstructure deck finish	non-skid moulded in
Cockpit deck finish	teak
Window frame	aluminium
Window material	tempered glass
Deckhatch	2x
Portholes	aluminium



Fuel tank (litre)	polyethylene 136
Level indicator (fuel tank)	yes
Freshwater tank (litre)	polyethylene 320
Level indicator (freshwater)	yes
Wheel steering	mechanical
Emergency tiller	yes

ACCOMMODATION

Cabins	3
Berths	6
Interior	teak
Floor	woodprint
Saloon	yes
Headroom saloon (m)	1,90
Chart table	yes
Aft Cabin	2 x
Dinette	yes
Galley	yes
Countertop	plastic
Sink	stainless steel 2 x
Cooker	calor gas Eno - 2 x burner
Oven	Eno
Fridge	Frigoboat (new in 11/2021)
Freezer	In the fridge
Hot water system	220V + engine
Water pressure system	electrical
Owners cabin	v-bed Front cabin
Bed length (m)	2,00
Wardrobe	hanging and shelves
Bathroom	shared
Toilet	shared



Toilet system	manual Jabsco (pump renewed in 2020)
Wash basin	in the bathroom
Shower	shared
Guest cabin 1	double bed
Bed length (m)	2,00 x 1,40
Wardrobe	hanging and shelves
Guest cabin 2	double bed
Bed length (m)	2,00 x 1,40
Wardrobe	hanging and shelves
Extra info	The saloon table can be enlarged with an additional tabletop

MACHINERY

No of engines	1
Make	Volvo Penta
Type	MD2040
HP	40
kW	29.44
Fuel	diesel
Year installed	2002
Maximum speed (kn)	8,5
Cruising speed (kn)	7
Consumption (l/hr)	2
Engine cooling system	freshwater heat exchanger
Drive	shaft
Engine controls	bowden cable
Gearbox	mechanical
Propeller type	fixed
Propeller blades	3
Propeller shaft material	stainless steel
Shaft lubrication	water
Manual bilge pump	yes



Electric bilge pump	yes
Electrical installation	12V / 230V
Start battery	1 x 70 Ah
Service battery	1x 105 Ah
Battery charger	Cristec 12/25
Shorepower	with cable
Extra info	Engine hour counter is not functioning
Extra info	Purflux Fuel Pre-Filter (anti-bacteria)

NAVIGATION

Compass	Plastimo (with air bubble)
Depth sounder/log	Raymarine ST60 Tridata
Windset	Raymarine ST60 (topunit needs to be checked/renewed)
VHF	Uniden
Autopilot	Raymarine ST4000+
Radar/GPS/plotter	Raytheon RC520 (on pedestal) + Raymarine RL70 (at chart table)
Navigation lights	yes

EQUIPMENT

Sprayhood with grab rail	Dark Blue (restitched and windows renewed in 2020)
Cockpit table	Folding (plastic)
Bathing platform	Non-skid moulded in and teak
Boarding ladder	stainless steel And plastic steps
Anchor	Danforth
Anchor chain	yes
Anchor 2	Danforth (spare in cockpit locker)
Windlass	electrical Lofrans
Outboard support	(plastic)
Sea railing	wire (double)
Grab rail (superstructure)	teak



Pushpit	Stainless steel
Pulpit	Stainless steel
Life raft (pers)	valise (or bag) 6 (2008)
Last life raft survey	2016 - need to be surveyed
Lifebuoy	yes
Rope cutter	yes
Fenders	yes
Mooring lines	yes
Radio-cd player	JVC
Speakers in salon	yes
Clock - barometer	yes
Fire extinguisher	(needs survey / replacement)

RIGGING

Rigging	sloop
Standing rigging	wire (2002)
Brand mast	Z-Spar
Material mast	aluminium
Spreaders	2 sets
Mainsail	(2002)
Mainsail cover	Dark blue (zipper renewed in 2020) with Lazy-Jacks
Genoa	(2002)
Genoa furler	Facnor
Genoa cover	Dark blue (zipper renewed in 2019)
Gennaker	Momentum Sails (2002) with squeezer
Reefing System	quick-one-line-reefing
Boomvang	tackle
Genoa sheetwinches	2x Harken 44ST
Halyard winches	2x Harken 32ST
Spi-pole	aluminium

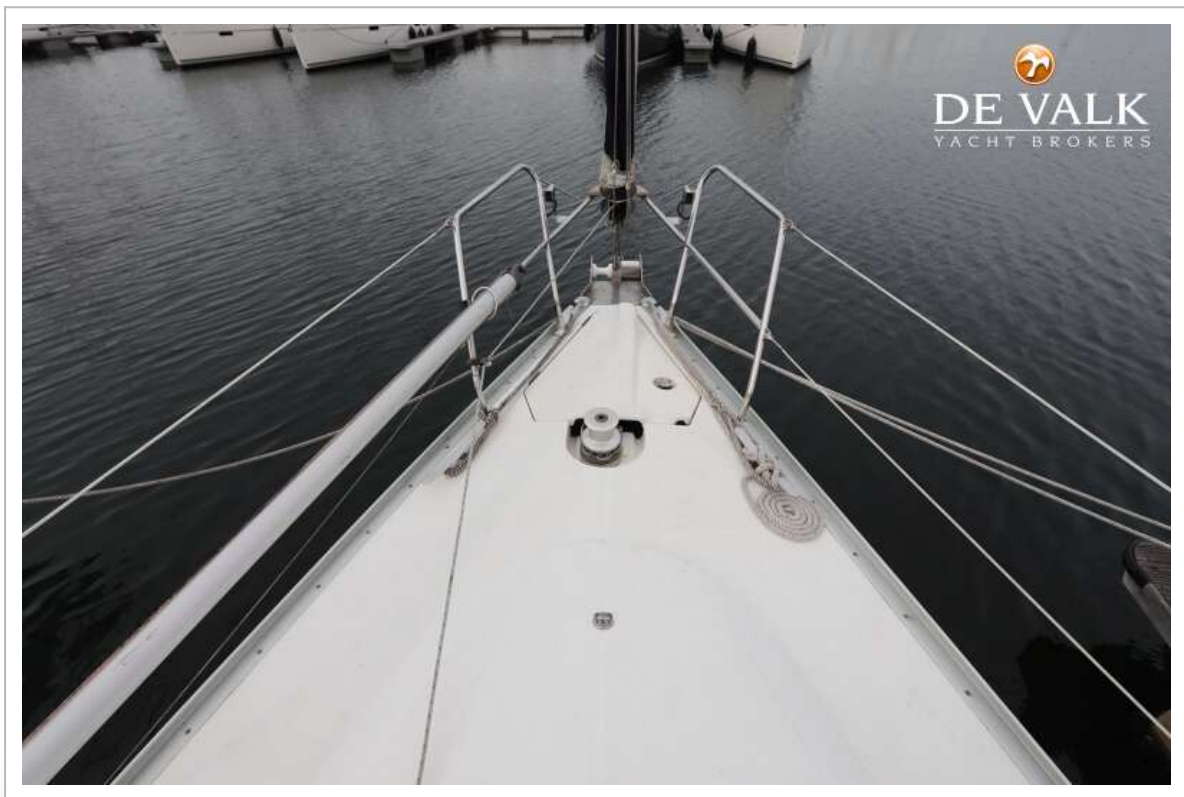




JEANNEAU SUN ODYSSEY 37



JEANNEAU SUN ODYSSEY 37



JEANNEAU SUN ODYSSEY 37





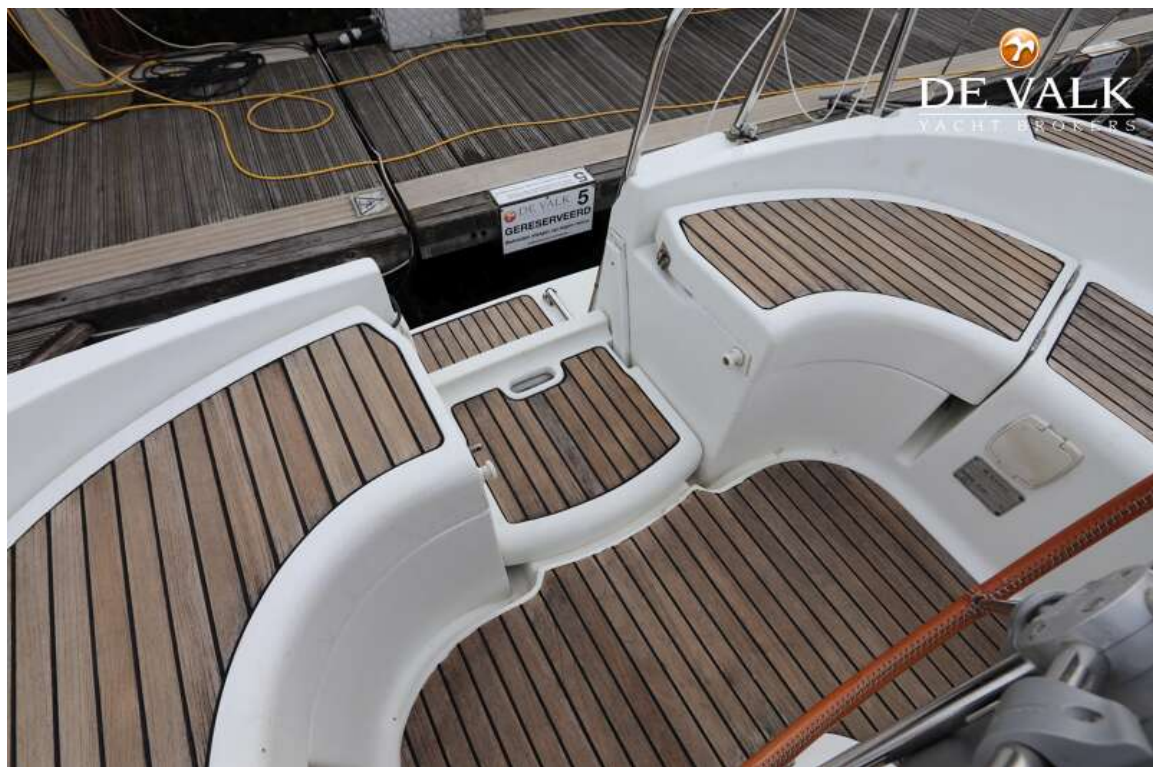
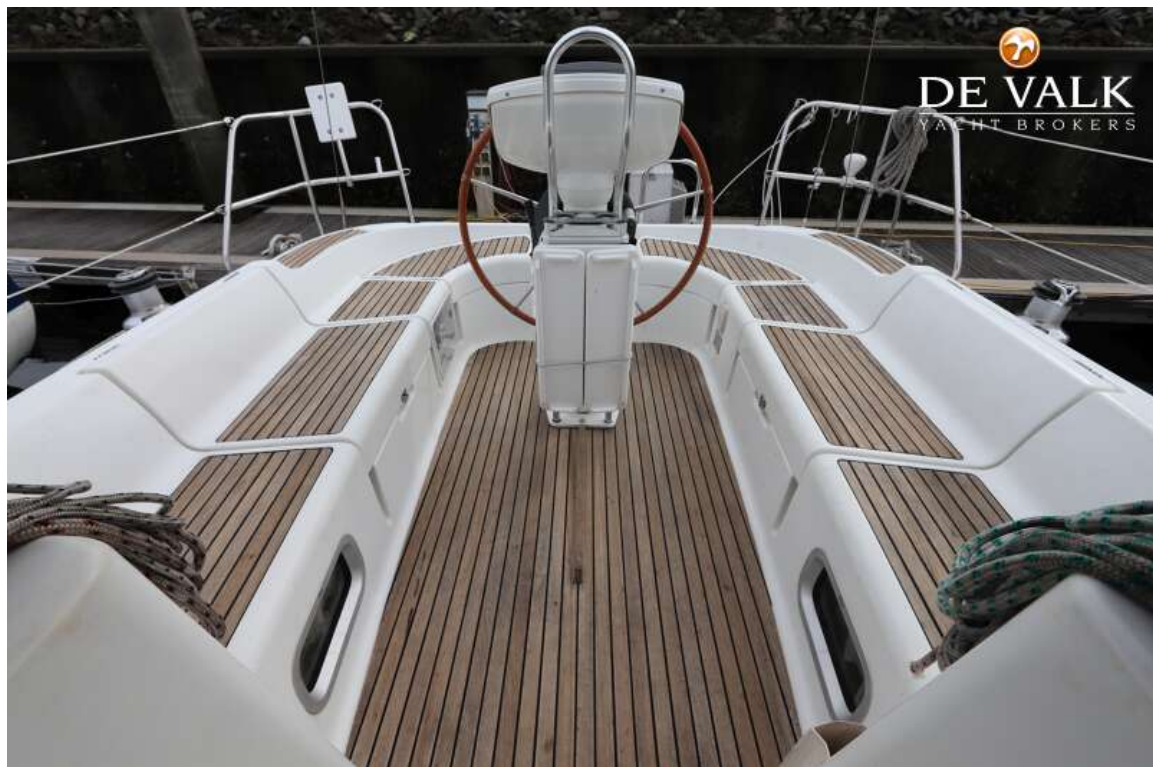
JEANNEAU SUN ODYSSEY 37



JEANNEAU SUN ODYSSEY 37



JEANNEAU SUN ODYSSEY 37



JEANNEAU SUN ODYSSEY 37



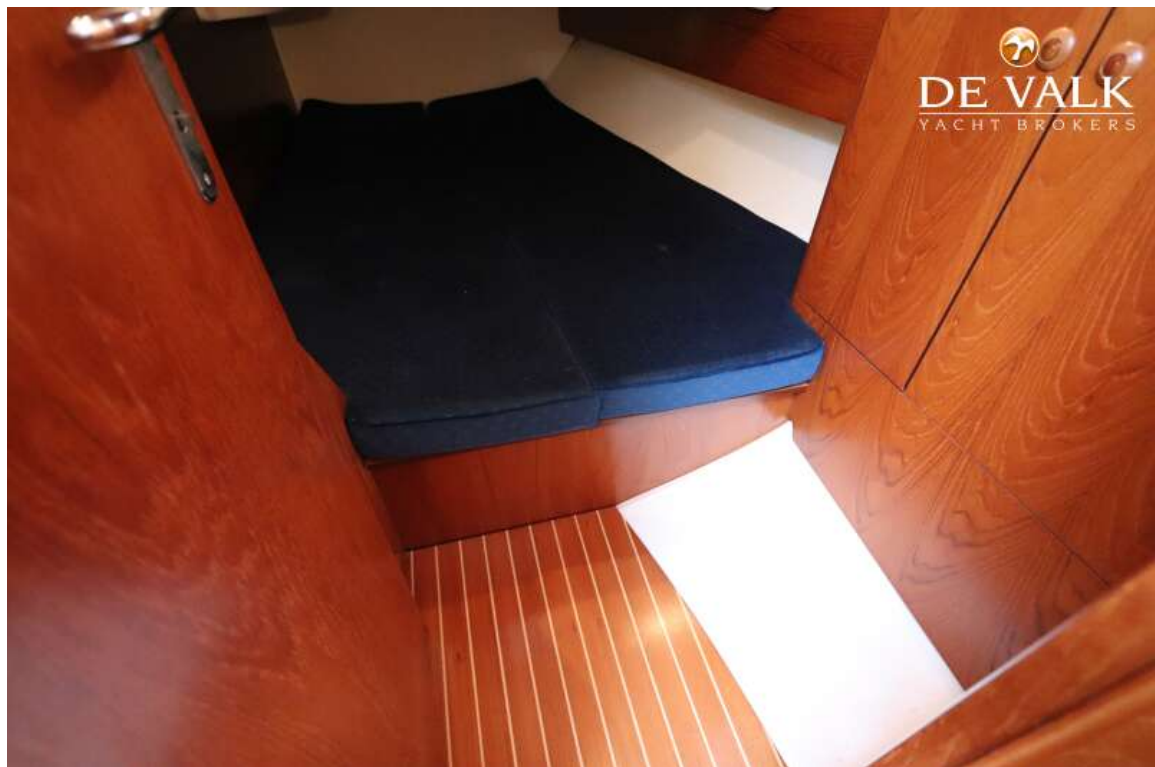
JEANNEAU SUN ODYSSEY 37



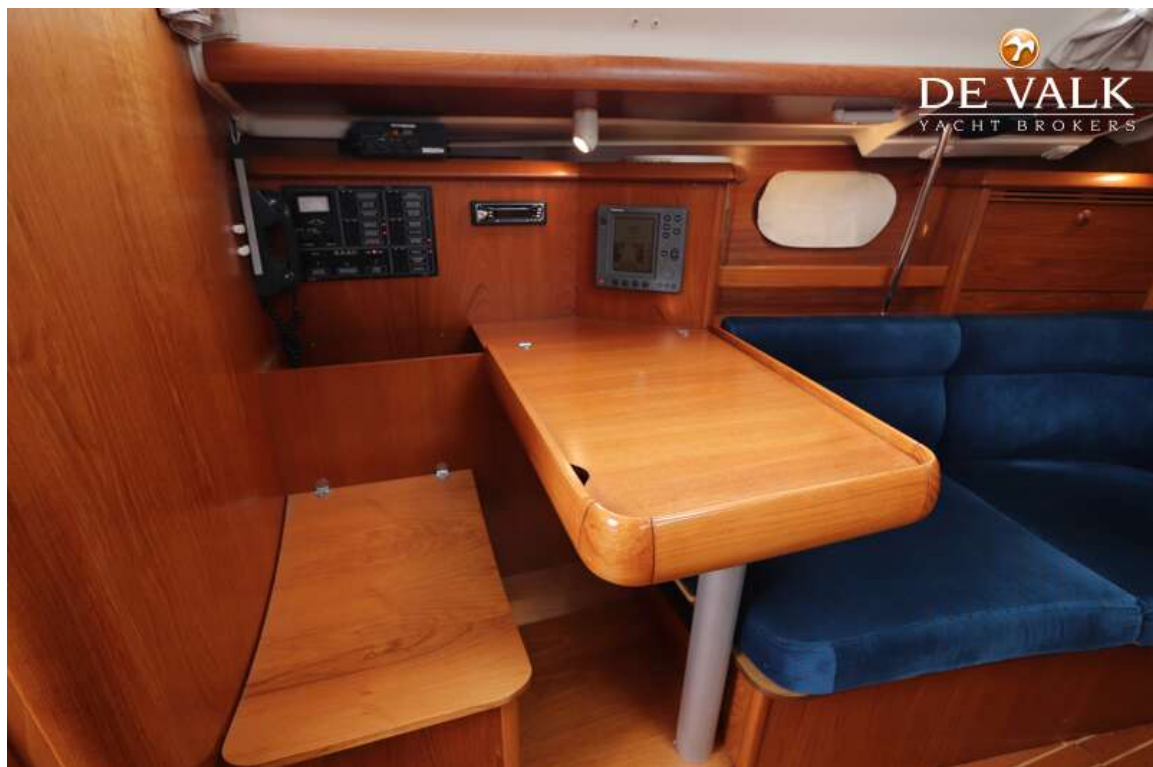
JEANNEAU SUN ODYSSEY 37



JEANNEAU SUN ODYSSEY 37



JEANNEAU SUN ODYSSEY 37



JEANNEAU SUN ODYSSEY 37



JEANNEAU SUN ODYSSEY 37

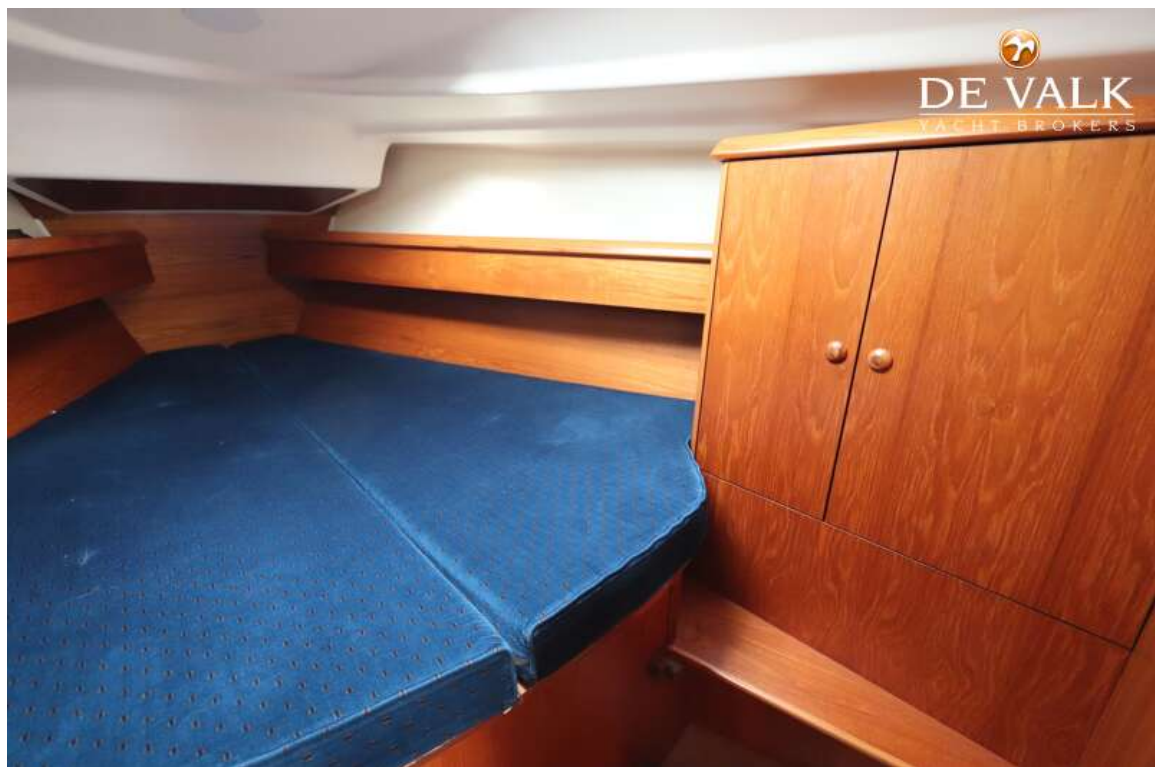


JEANNEAU SUN ODYSSEY 37



JEANNEAU SUN ODYSSEY 37





JEANNEAU SUN ODYSSEY 37

