



## NAUTOR SWAN 43



# NAUTOR SWAN 43

## BROKER'S COMMENTS

This beautiful classic Nautor Swan 43 is in excellent condition due to all renewing's in the last 12 years. An iconic Swan from the famous drawing board by Sparkman & Stephens. This Swan is a sight in every port where you arrive. This unique sailing yacht is now on shore next to our office in Sint Annaland. in the South-West of the Netherlands, so you are 7 days a week welcome to visit this beauty.

*Jan-Ward van Dantzig*

## SPECIFICATIONS

<b>Dimensions</b>	13.04 x 3.55 x 2.20 (m)	<b>Builder</b>	Nautor Swan AB
<b>Built</b>	1969	<b>Cabins</b>	3
<b>Material</b>	GRP	<b>Berths</b>	7
<b>Engine(s)</b>	1 x Beta Marina Kubota BV2203 diesel	<b>Hp/Kw</b>	50.00 (hp), 36.80 (kw)
<b>Asking price</b>	sold (VAT )	<b>Lying</b>	at sales office

## CONTACT

<b>Sales office</b>	De Valk Sint Annaland B.V.	<b>Telephone</b>	+31 (0)166 601 000
<b>Address</b>	Koelhuisweg 4 4697 RM Sint Annaland NL	<b>E-mail</b>	sintannaland@devalk.nl

## DISCLAIMER

These particulars are given in good faith as supplied but cannot be guaranteed.



# NAUTOR SWAN 43

## GENERAL

Model	NAUTOR SWAN 43
Type	sailing yacht
LOA (m)	13,04
LWL (m)	9,45
Beam (m)	3,55
Draft (m)	2,20
Air draft (m)	18,70
Headroom (m)	1,90
Year built	1969
Builder	Nautor Swan AB
Country	Finland
Designer	Sparkman & Stephens
Displacement (t)	10,5
Ballast (tonnes)	lead 4,7
CE norm	NA
Hull material	GRP
Hull colour	white (painted in 2006)
Hull shape	S-bilged (Semi)
Keel type	fin keel
Superstructure material	GRP
Rubbing strake	New in 2006 : hardwood
Deck material	GRP (with honeycomb)
Deck finish	teak
Superstructure deck finish	paint (painted white in 2006)
Cockpit deck finish	teak
Antifouling (year)	(Coppercoat) 2016 & 2022
Dorades	2 x Stainless steel with a stainless steel protection bar
Window frame	stainless steel
Window material	glass
Deckhatch	New in 2006 : Man Ship (with stainless steel frames)



<b>Portholes</b>	stainless steel
<b>Insulation</b>	foam plates (behind the paneling)
<b>Fuel tank (litre)</b>	stainless steel 120 (diesel system cleaned and tank flushed in 2023)
<b>Freshwater tank (litre)</b>	stainless steel 350
<b>Level indicator (freshwater)</b>	yes
<b>Blackwater tank (litre)</b>	stainless steel Custom-made tank available; still to be installed
<b>Level indicator (blackwater)</b>	Still to be connected
<b>Blackwater tank extraction</b>	deck extraction + uw line Still to be connected
<b>Wheel steering</b>	Leather (New in 2021) covered stainless steel steering wheel
<b>Outside helm position</b>	cable steering Pedestal painted in 2006
<b>Emergency tiller</b>	yes
<b>More info on hull</b>	In 2016, the underwater hull had a preventive osmose treatment with with 2 layers of laminate/fabric in combination with vinylester resin and final finished with 4 layers of Coppercoat. On the work done there is 10 year guarantee in place till 2026.
<b>Extra info</b>	New in 2017: Rudder blade with original stainless steel construction and a new Corecell foam core.
<b>Extra info</b>	All sea cocks (all "Blake") were last serviced in 2021

## ACCOMMODATION

<b>Cabins</b>	3
<b>Berths</b>	7
<b>Interior</b>	teak With white panels
<b>Floor</b>	teak and holly New in 2007 (as well as the ceiling)
<b>Saloon</b>	New in 2007 : Cushions & Alcantara upholstery
<b>Headroom saloon (m)</b>	1.85 - 2.00
<b>Heating</b>	diesel ducted hot air Webasto (serviced in 2022)
<b>Chart table</b>	On port side - Headroom 1.85 m
<b>Aft Cabin</b>	2 x
<b>Dinette</b>	yes
<b>Convertible berth</b>	Port side sofa: 1.94x0.60m - starboard side sofa: 2x 1.94x0.55m



Galley	On starboard side - Headroom 1.85 m
Countertop	Duropol (White)
Sink	stainless steel 2 x
Cooker	calor gas Eno 2 x burner
Oven	Eno
Gas alarm	New in 2021
Fridge	Top loader with an Isotherm cold plate (New in 2007)
Hot water system	220V + engine New in 2021 : 15 Liter Quick B3 Boiler 800 Watt
Water pressure system	electrical New in 2021 : Electric Jabsco ParMax Plus4 water pump
Manual and/or foot pump	Foot pump at the galley
Owners cabin	v-bed In the front cabin - Headroom : 1.65 - 1.75 m
Bed length (m)	2.00 x 1.50
Wardrobe	hanging and shelves
Bathroom	shared Headroom : 1.73 m
Toilet	shared
Toilet system	manual New in 2022 : Jabsco
Wash basin	in the bathroom
Shower	shared
Extra info	New in 2021 : Flexima mattresses
Guest cabin 1	Port side aft cabin - Headroom 1.37 m
Bed length (m)	1.95 x 0.55
Wardrobe	hanging and shelves
Extra info	New in 2021 : Flexima mattress
Guest cabin 2	Starboard aft cabin
Bed length (m)	2.00 x 0.75/1.15
Wardrobe	shelves
Extra info	New in 2021 : Flexima mattresses
Extra info	The sail storage in the bow was converted into a sleeping cabin in 2006.
Extra info	New in 2021 : all hoses of the fresh watersystem.



## MACHINERY

No of engines	1
Make	Beta Marina Kubota
Type	BV2203
HP	50
kW	36.80
Fuel	diesel
Year installed	2016
Maximum speed (kn)	7,5
Cruising speed (kn)	6,5
Consumption (l/hr)	3,5
Engine hours	515
Engine cooling system	freshwater heat exchanger New in 2016
Drive	shaft
Shaft seal	New in 2016
Engine controls	bowden cable New in 2016
Gearbox	mechanical New in 2016 : Twindisk & Aquadrive
Exhaust	watercooled New in 2016
Propeller type	folding New in 2006 : Maxprop
Propeller blades	3
Propeller shaft material	stainless steel New in 2006
Shaft lubrication	water New in 2016
Manual bilge pump	New in 2021 : 1x
Electric bilge pump	New in 2021 : 1x Gulper with a floater
Electrical installation	New in 2007 : 12 & 220 Volt
Start battery	New in 2021 : 1 x 50 Ah Optima Red Top
Service battery	2x 110 Ah Semi Traction (2021) & 3x 110 Ah Gel Deep Cycle (2022)
Battery monitor	New in 2021 : Mastervolt Battery Monitor BTM - III
Battery charger	New in 2021 : Mastervolt 12V/25A & Victron Blue Smart 12V/30A-3



<b>Inverter</b>	New in 2022 : Xenteq PurePower 12V-230V-2.000 Watt (pure Sine)
<b>Diode battery combiners</b>	yes
<b>Shorepower</b>	with cable New shore power connection in 2007 & New cable in 2021
<b>Extra info</b>	New in 2016 : 70 A Alternator
<b>Extra info</b>	2022: Major engine service, including gearbox oil replacement.
<b>Extra info</b>	2024: Small engine service, including engine anodes replacement.

## NAVIGATION

<b>Compass</b>	Sestrel (on the pedestal)
<b>Multi control display</b>	New in 2007 : Raytheon ST60 Multi
<b>Depth sounder</b>	New in 2007 : Raytheon ST60 Depht
<b>Log</b>	New in 2007 : Raytheon ST60 Speed
<b>Windset</b>	New in 2007 : Raytheon ST60 Wind & CH Wind
<b>VHF</b>	New in 2007 : Simrad RS87
<b>Autopilot</b>	New 2021 : Raymarine Evolution EV-400 Sail with a hydraulic "Lecomble & Smith" heavy duty linear drive
<b>Rudder angle indicator</b>	Via autopilot
<b>Radar</b>	New in 2021 : Raymarine Quantum Q24D (dome mounted in the mast)
<b>GPS</b>	New in 2007 : Furuno GPS
<b>Plotter/GPS</b>	New in 2016 : Raymarine E7 hybridtouch (on the pedestal)
<b>Navtex</b>	New in 2007 : Furuno NX-300
<b>Navigation lights</b>	Side lights : (New in 2022) Aqua Signal LED
<b>Extra info</b>	Raymarine S100 Remote (wireless remote for the autopilot)
<b>Extra info</b>	Due to the wiFi in the chartplotter, you can connect a smartphone and/or a tablet to chair the chartplotter information.

## EQUIPMENT

<b>Sprayhood</b>	New in 2021 : Sand coloured
------------------	-----------------------------



Cockpit cover	New in 2021 : Sand coloured
Winter cover	New in 2006
Cockpit cushions	New in 2021 : 2 x Grey Comfort Seats
Cockpit table	New in 2021 : Removable teak table with folding side panels
Boarding ladder	Stainless steel
Anchor	CQR Plough 35 lbs
Anchor chain	10 mm 40 m
Windlass	electrical Ideal Windlass Co.
Outboard support	Teak (on the pushpit)
Sea railing	wire 2 x Stainless steel
Grab rail (superstructure)	teak Varnished
Railing side opening gates	On starboard sides
Pushpit	Stainless steel
Pulpit	Stainless steel
Life raft	container Plastimo Cruiser ORC/RRORC
Life raft (pers)	6
Last life raft survey	Valid till 03-2025
Safety lines on deck	yes
Radar reflector	yes
Fenders	yes
Mooring lines	yes
Radio-cd player	New in 2021: Fusion MS-RA70
Cockpit speakers	New in 2021: 2 x waterproof
Speakers in salon	New in 2021: 4 x Pioneer
Clock - barometer	Chelsea
Fire extinguisher	New in 2021
Extra info	New in 2021: Stainless steel hoses at the stove & gas bottle & new solenoid valve.
Extra info	New in 2021 : 2 x Fire-blanket
Extra info	Sand coloured pedestal & steering wheel cover

## RIGGING





<b>Rigging</b>	sloop New in 2006
<b>Standing rigging</b>	Dyform New in 2006 (last inspection carried out in 2021)
<b>Brand mast</b>	Sparcraft New in 2006 (50 cm longer than original mast)
<b>Material mast</b>	aluminium New in 2006
<b>Spreaders</b>	New in 2006 : 2 x set
<b>Keel stepped mast</b>	yes
<b>Mainsail cover</b>	New in 2021 : Sand coloured
<b>Battcars</b>	New in 2023
<b>Fully battened mainsail</b>	New in 2023 : Elvstrom - Epex Vectran/Technora
<b>Genoa I</b>	Dacron Genoa I (light weather)
<b>Genoa II</b>	New in 2022: Elvstrom - Epex Vectran/Technora : furling genoa II
<b>Genoa furler</b>	New in 2006 : Reckmann RS2000-20
<b>Genoa cover</b>	New in 2021 : Sand coloured
<b>Gennaker</b>	UK Sails
<b>Spinnaker</b>	Van Vliet Sails : Mylar
<b>Stormjib</b>	Dacron
<b>Reefing System</b>	slabreefing
<b>Backstay adjuster</b>	hydraulic Navtec
<b>Boomvang</b>	mechanical New in 2006 : Quickvang
<b>Genoa sheetwinches</b>	New in 2008 : 2 x Andersen 46 ST
<b>Halyard winches</b>	Barlow : 2 x 30 ST & 2 x 30
<b>Spinnaker winch</b>	New in 2008 : 2 x Andersen 28 ST
<b>Reefing winch</b>	1 x Barlow 16
<b>Spi-pole</b>	aluminium (original)
<b>Isolated backstay</b>	New in 2006
<b>Extra info</b>	1 x Aluminium folding maststep. Various other older sails.
<b>Extra info</b>	Running rigg renewed in 2006 & some recently renewed. Lazy Jacks



# NAUTOR SWAN 43





# NAUTOR SWAN 43





# NAUTOR SWAN 43



# NAUTOR SWAN 43

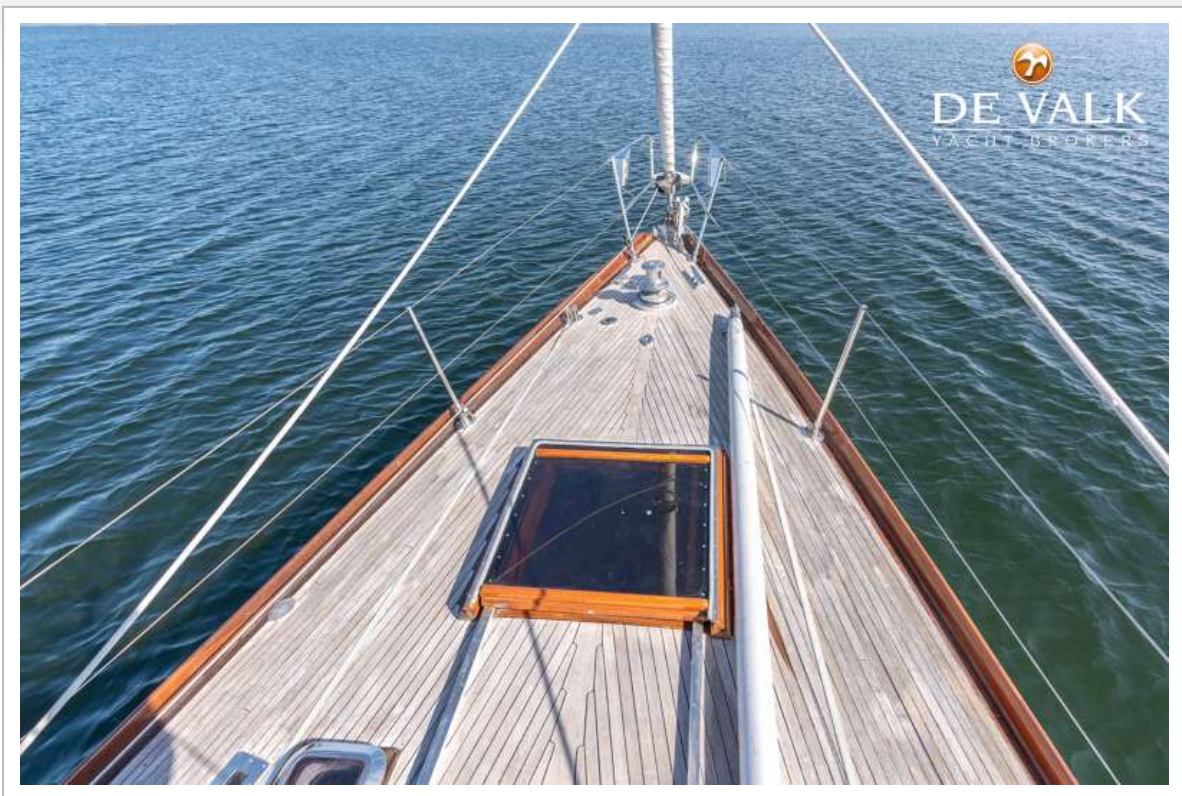




# NAUTOR SWAN 43



# NAUTOR SWAN 43



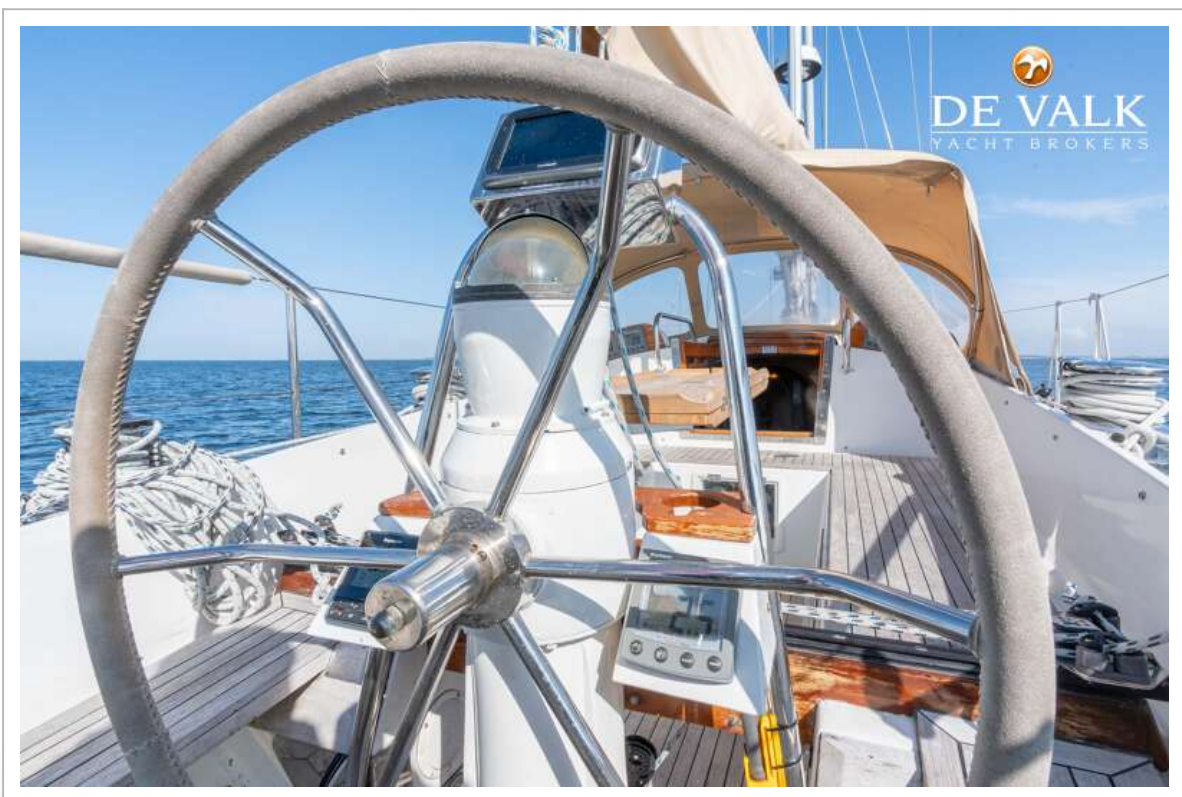


# NAUTOR SWAN 43

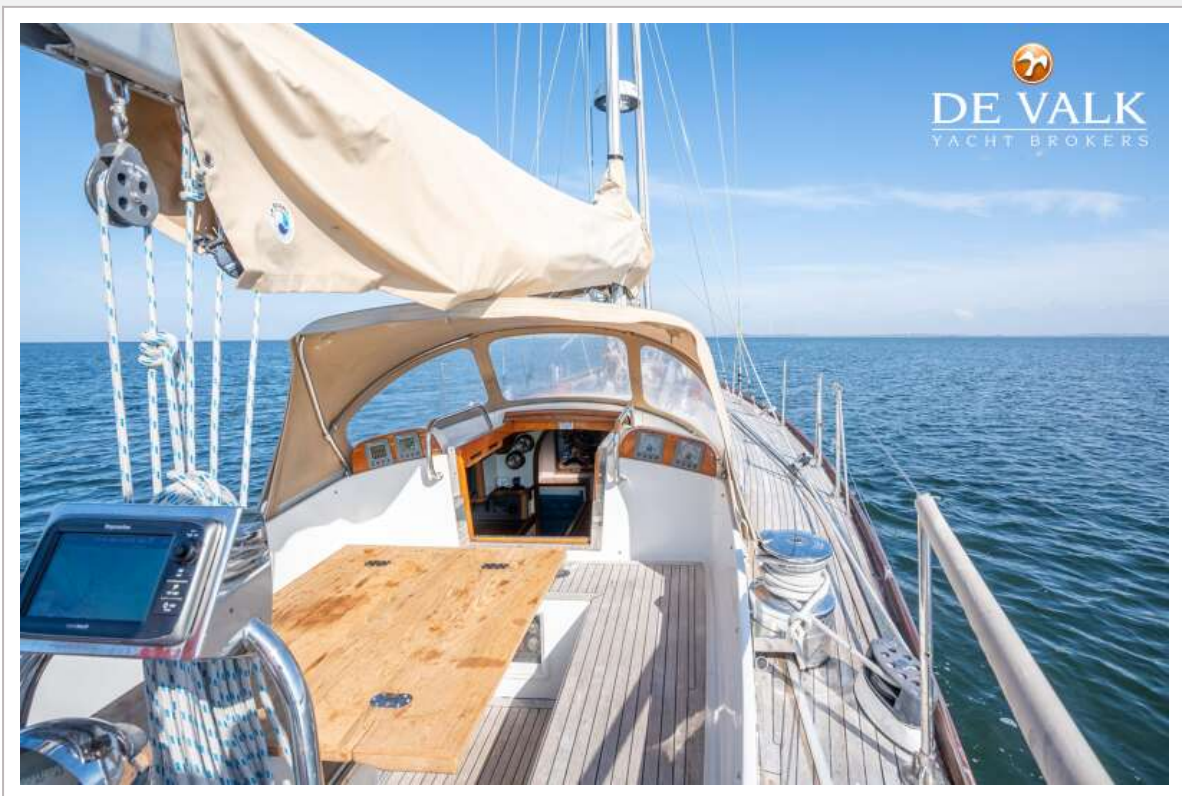




# NAUTOR SWAN 43

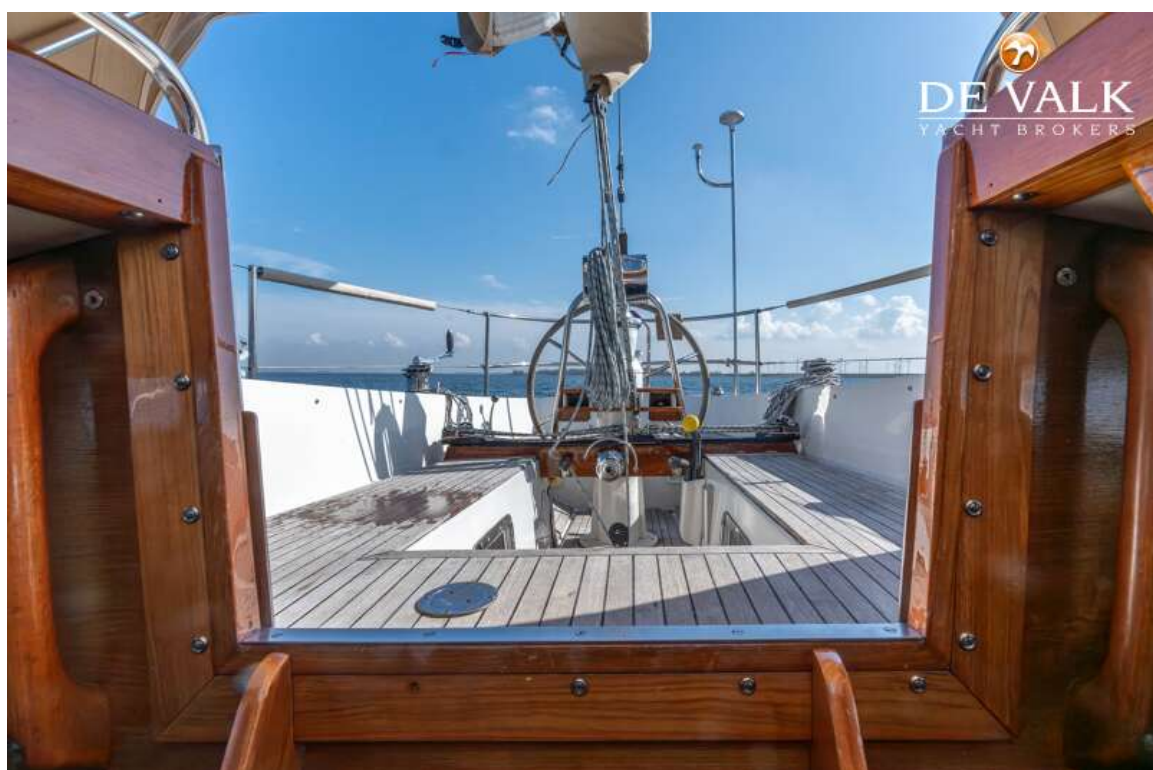


# NAUTOR SWAN 43

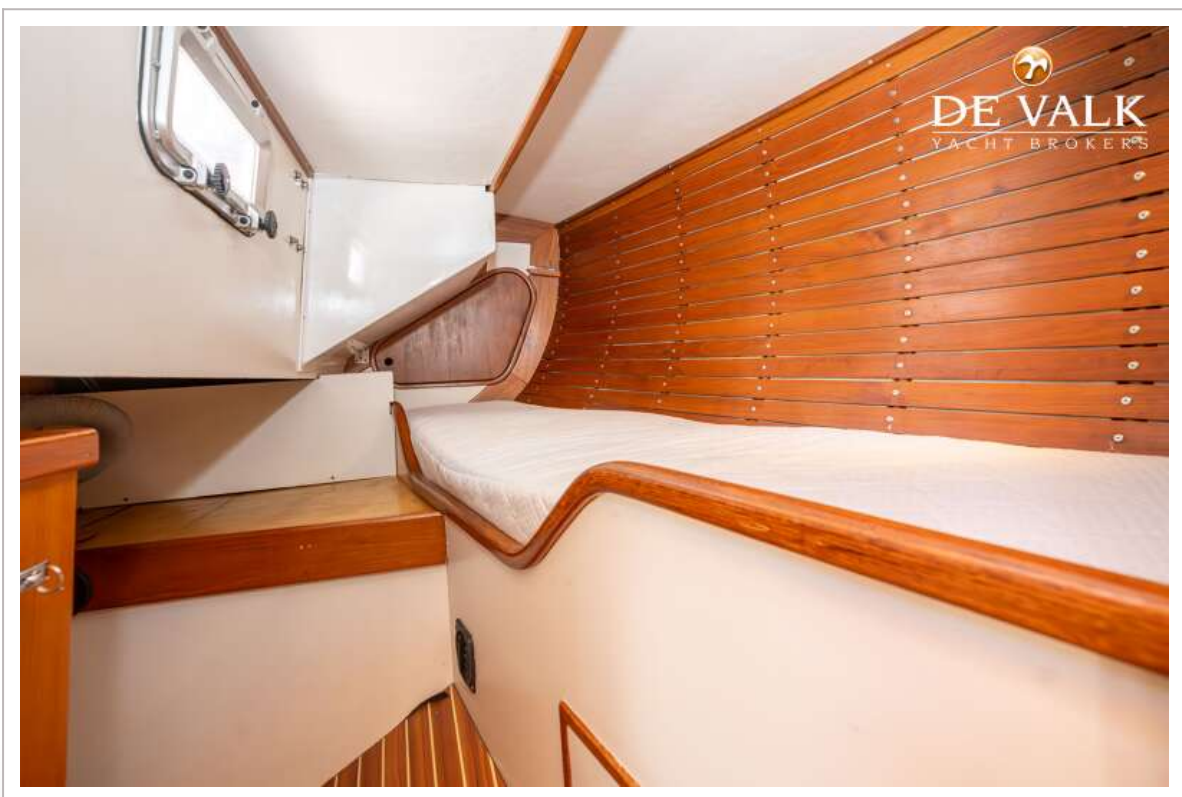




# NAUTOR SWAN 43

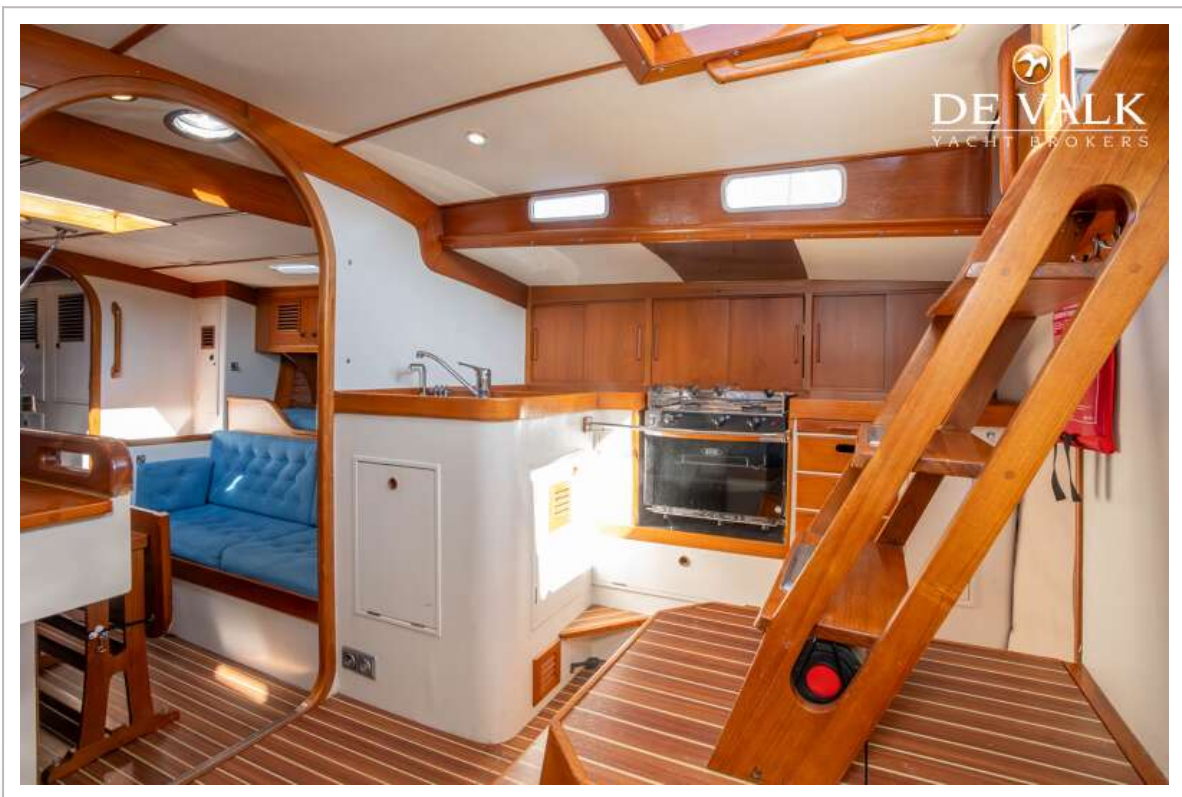


# NAUTOR SWAN 43





# NAUTOR SWAN 43

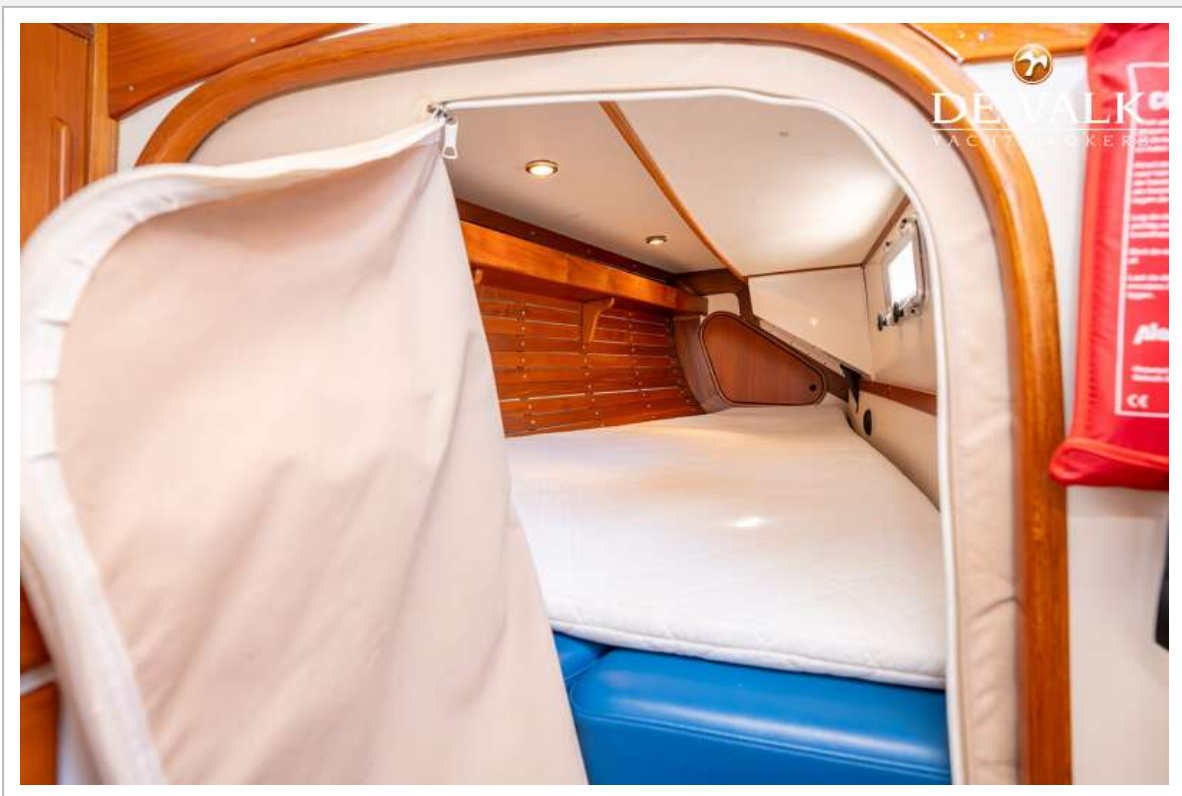


# NAUTOR SWAN 43

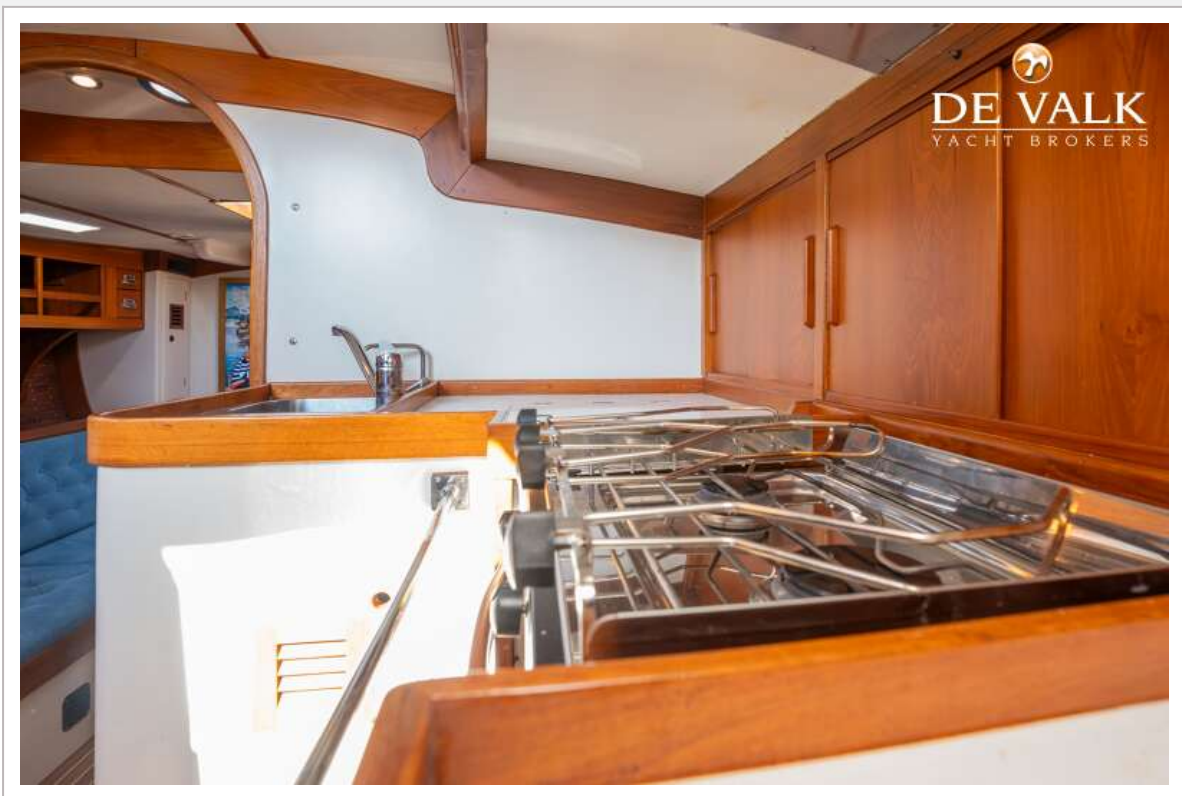




# NAUTOR SWAN 43

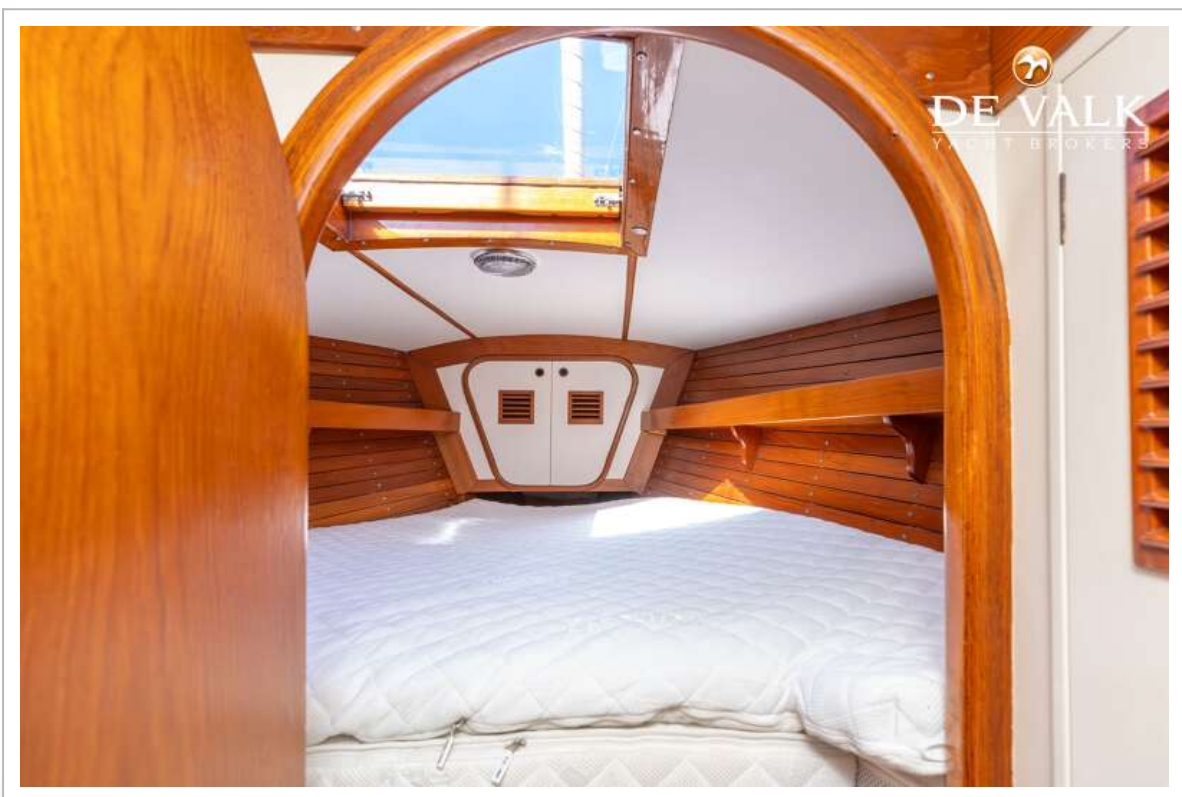


# NAUTOR SWAN 43





# NAUTOR SWAN 43

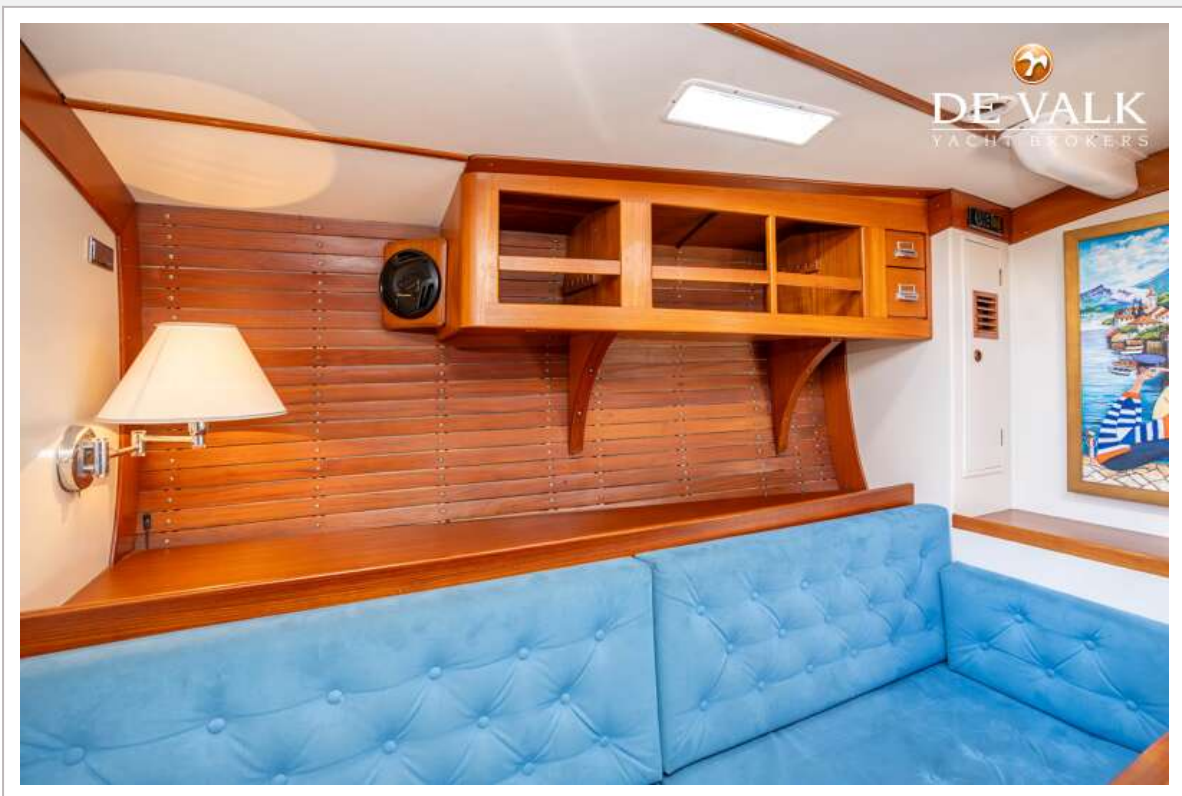


# NAUTOR SWAN 43

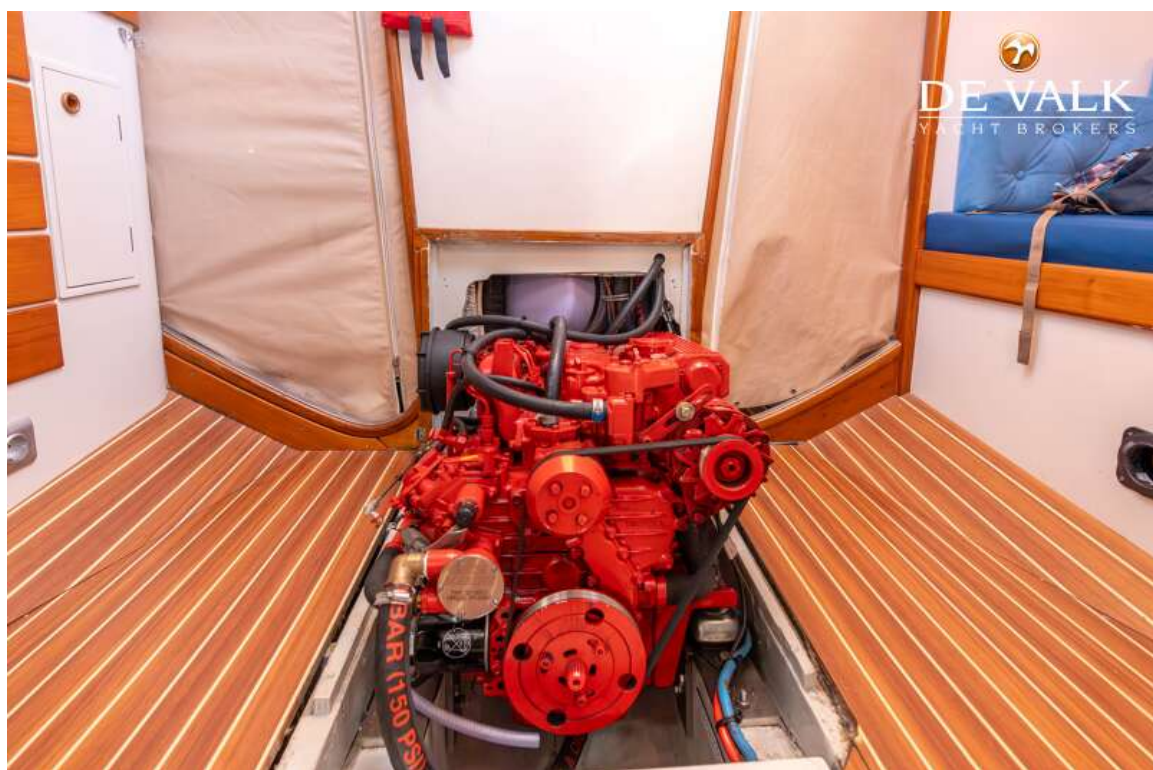




# NAUTOR SWAN 43

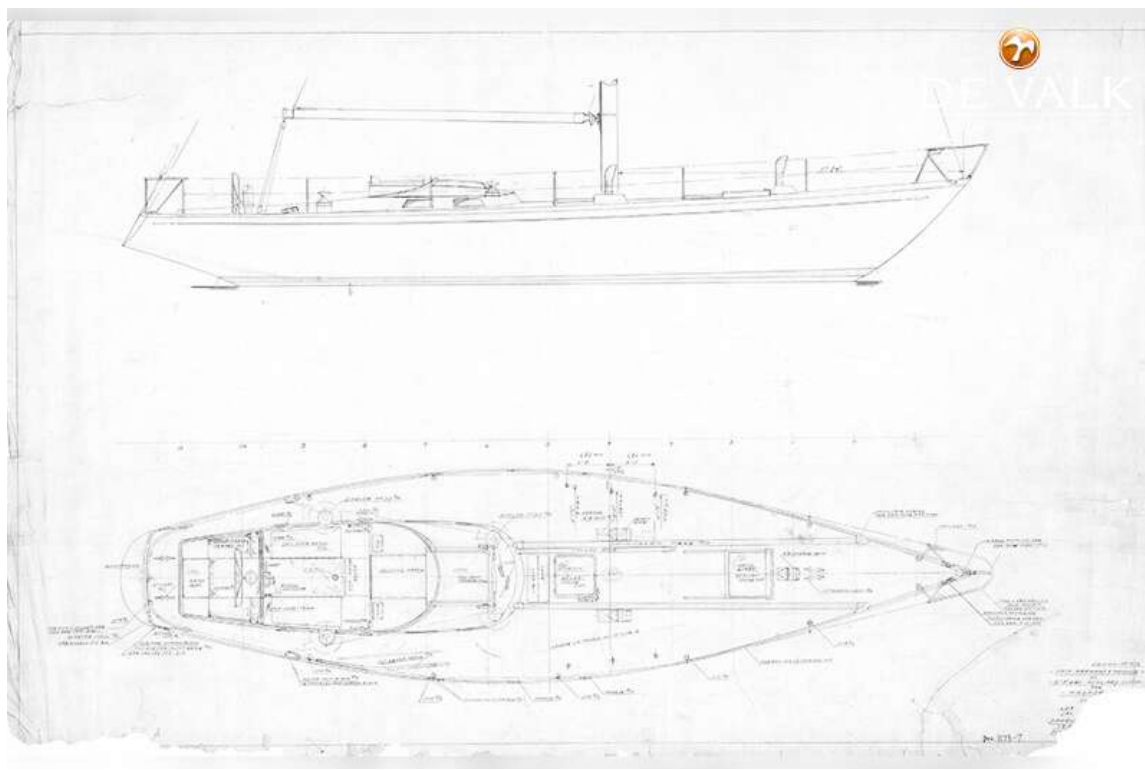
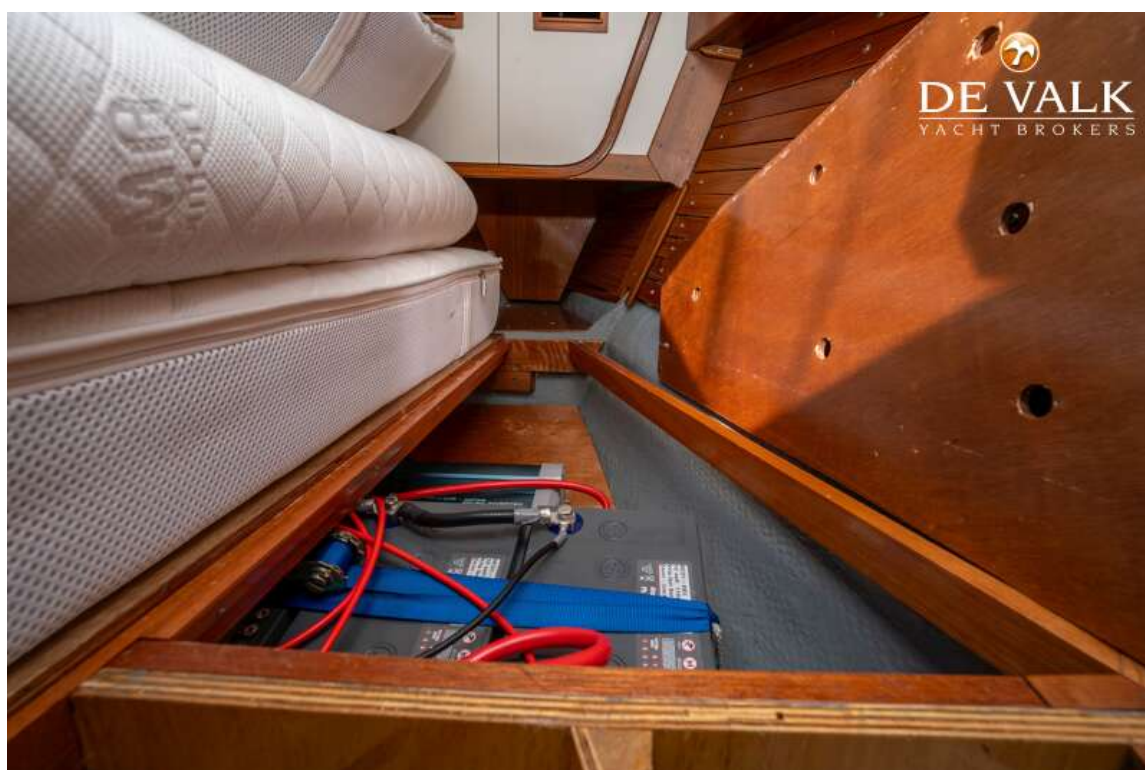


# NAUTOR SWAN 43

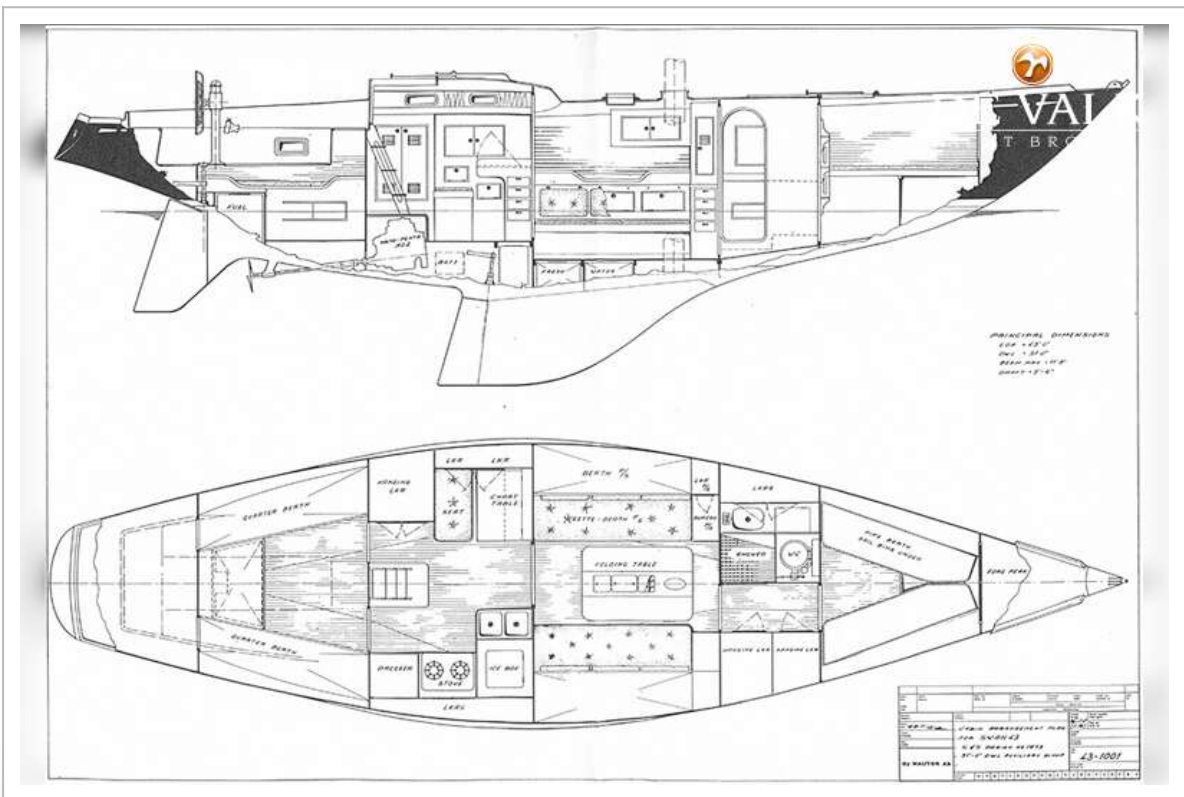
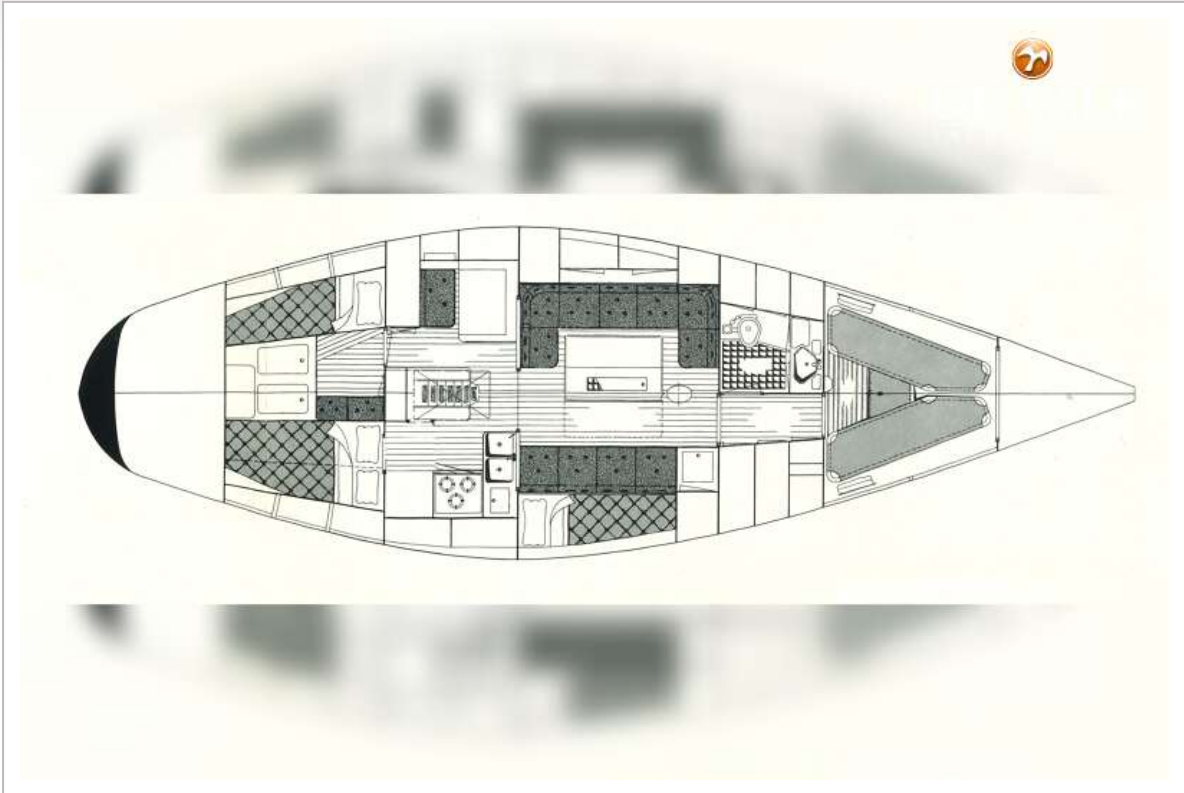




# NAUTOR SWAN 43



# NAUTOR SWAN 43



# NAUTOR SWAN 43

