



CONTEST 48CS

CONTEST 48CS

BROKER'S COMMENTS

The Contest 48CS is a well designed spacious and comfortable yacht. Her perfect sailing performance makes her easy to handle with a small crew. Spacious and light interior combined with a large owners cabin and luxurious guest cabins make her a joy to sail with family and friends. She is ready to go anywhere you want and can be seen in our sales marina 7 days a week.

Reinier van der Wolf

SPECIFICATIONS

Dimensions	14.75 x 4.25 x 2.05 (m)	Builder	Contest Yachts - Conyplex, Medemblik
Built	1998	Cabins	2
Material	GRP	Berths	6
Engine(s)	1 x Perkins M 135 diesel	Hp/Kw	135.00 (hp), 99.36 (kw)
Asking price	sold (VAT)	Lying	at sales office

CONTACT

Sales office	De Valk Monnickendam B.V.	Telephone	+31 (0)299 65 63 50
Address	Hoogedijk 6 1145 PM Katwoude NL	E-mail	monnickendam@devalk.nl

DISCLAIMER

These particulars are given in good faith as supplied but cannot be guaranteed.



GENERAL

Model	CONTEST 48CS
Type	sailing yacht
LOA (m)	14,75
LWL (m)	12,40
Beam (m)	4,25
Draft (m)	2,05
Year built	1998
Builder	Contest Yachts - Conyplex, Medemblik
Country	The Netherlands
Designer	Dick Zaal - Georg Nissen
Displacement (t)	18,3
Ballast (tonnes)	cast iron 6,5
CE norm	A
Hull material	GRP
Hull colour	white
Hull shape	round-bilged
Keel type	bulb keel
Superstructure material	GRP
Rubbing strake	wood With stainless steel strip
Deck material	GRP
Deck finish	teak
Superstructure deck finish	teak
Cockpit deck finish	teak
Antifouling (year)	November, 2022
Dorades	2 x with stainless steel protection bracket
Window frame	aluminium
Window material	tempered glass Tinted
Deckhatch	4 x Gebo
Fuel tank (litre)	stainless steel 600
Level indicator (fuel tank)	Turotest



Freshwater tank (litre)	stainless steel 2 x 225
Level indicator (freshwater)	Turotest
Blackwater tank (litre)	45
Wheel steering	mechanical Whitlock
Emergency tiller	yes
More info on hull	polished hull, superstructure and stainless steel (11/2022)
Extra info	Check valves and replace valves with heavy corrosion (11/2022)

ACCOMMODATION

Cabins	2
Berths	6
Interior	teak
Floor	teak and holly
Open cockpit	yes
Saloon	yes
Headroom saloon (m)	2
Heating	diesel ducted hot air Webasto AT 3500 D (serviced 11/2022)
Heating 2	diesel ducted hot air Webasto AT 3500 D (serviced 11/2022)
Air-conditioning	In salon
Chart table	yes
Aft Cabin	1 x
Galley	yes
Countertop	corian
Sink	stainless steel Double
Cooker	induction Drija, two burner, cooktop
Fridge	Frigonautica + toplayer
Hot water system	220V + engine Boiler (Isotemp)
Water pressure system	electrical
Owners cabin	French bed After cabin
Bed length (m)	2



Wardrobe	hanging and shelves
Bathroom	en suite
Toilet	en suite
Toilet system	manual Jabsco
Wash basin	in the bathroom
Shower	en suite
Guest cabin 1	double bed Bow
Bed length (m)	2
Wardrobe	hanging and shelves
Bathroom	en suite
Toilet	en suite
Toilet system	manual Jabsco
Wash basin	in the bathroom
Shower	en suite
Extra info	sofa in front cabin convertible to single bed.

MACHINERY

No of engines	1
Make	Perkins
Type	M 135
HP	135
kW	99.36
Fuel	diesel
Year installed	1998
Engine hours	+/- 1100
Engine cooling system	freshwater heat exchanger
Drive	shaft
Shaft seal	Replace outer bearing, grease cord November 2022
Engine controls	bowden cable
Gearbox	hydraulic Paragon
Bowthruster	electric Sidepower (2022)



Exhaust	watercooled
Propeller type	fixed
Propeller blades	3 x
Propeller shaft material	stainless steel
Shaft lubrication	grease
Manual bilge pump	yes
Electric bilge pump	with alarm
Electrical installation	12 / 220 / 110 v.
Generator	wet exhaust 4 kW MPW 5 Zeise (serviced 11/2022)
Running hours generator	897
Start battery	3 x (2019)
Service battery	under U-seat in saloon 5 x (2021) (Lithium 5x 200AH Victron)
Bowthruster battery	1 x
Battery monitor	yes
Battery charger	2 x
Inverter	Victron Quattro 12 / 5000 / 220
Wind generator	Rutland rutland 1200
Solar panel	photovoltaic module 4 x 335W Panasonic
Shorepower	with cable
Watermaker	35 l. p/h Schenker
Extra info	Volvo penta engine hour display not working. display indicates: 853
Extra info	Propeller shaft + bearing renewed in 2022.
Extra info	Engine service (11/2022)

NAVIGATION

Compass	Suunto
Depth sounder	in cockpit Raymarine (2022)
Log	in cockpit Raymarine (2022)
Windset	in cockpit Raymarine (2022)
Repeater	@ chart table Autopilot + speed + log (also AIS, Wind)



VHF	Raymarine, Ray 240E
VHF handheld	Icon
Autopilot	in cockpit Raymarine
GPS	Furuno GPS/WAAS Navigator
Radar/GPS/plotter	Raymarine E120
Navtex	Furuno NX-300 Navtex
Electronic chart(s)	Europe and Caribbean (expired)
AIS receiver	yes
AIS transponder	yes
EPIRB	yes
Navigation lights	yes

EQUIPMENT

Sprayhood	with grab handle on side (2021)
Bimini	(2021)
Cockpit cushions	yes
Cockpit table	Teak
Bathing platform	integrated into hull
Boarding ladder	stainless steel
Gangway	yes
Deck shower	yes
Anchor	Delta
Anchor chain	80 m.
Windlass	electrical Simpson Lawrence
Deck wash	yes
Dinghy	Lodestar Rib 320 Open (2019)
Outboard	Electric
Outboard support	yes
Davits	stainless steel
Davits controls	manual
Sea railing	stainless steel (2020)



Grab rail (superstructure)	stainless steel
Railing side opening gates	yes
Pushpit	stainless steel
Pulpit	stainless steel
Life raft	container Transocean
Life raft (pers)	4
Last life raft survey	(2021)
Lifejackets	3 x
Safety lines on deck	yes
Fenders	yes
Mooring lines	yes
Radio-cd player	JVC
Cockpit speakers	yes
Speakers in salon	yes
Clock - barometer	yes
Fire extinguisher	2 x
Latest extinguisher survey	(2021)
Extra info	3 x personal locator beacon (PLB)

RIGGING

Rigging	sloop-cutter
Standing rigging	wire Original (1998)
Brand mast	Seldén
Material mast	aluminium
Spreaders	2 x
Mainsail cover	yes
Fully battened mainsail	with Lazy Jacks 2021
Cutterstay	yes
Genoa	North Sails 140%, (2019)
Genoa furler	Furlex
Cutter furler	Furlex



Spinnaker	yes
Backstay adjuster	mechanical Nemo
Boomvang	mechanical and tackle Seldén Rodkicker
Secondary sheet winch	2 x Lewmar 40ST (main) + 2 Lewmar 44ST (cutter jib) (serviced 11/2022)
Genoa sheetwinches	electrisch 2 x 58ST (serviced 11/2022)
Halyard winches	2 x Lewmar 44ST + 1 x Lewmar 30ST --> on mast (serviced 11/2022)
Spi-pole	aluminium Seldén (2022)
Extra info	Boom light Seldén (11/2022)



CONTEST 48CS

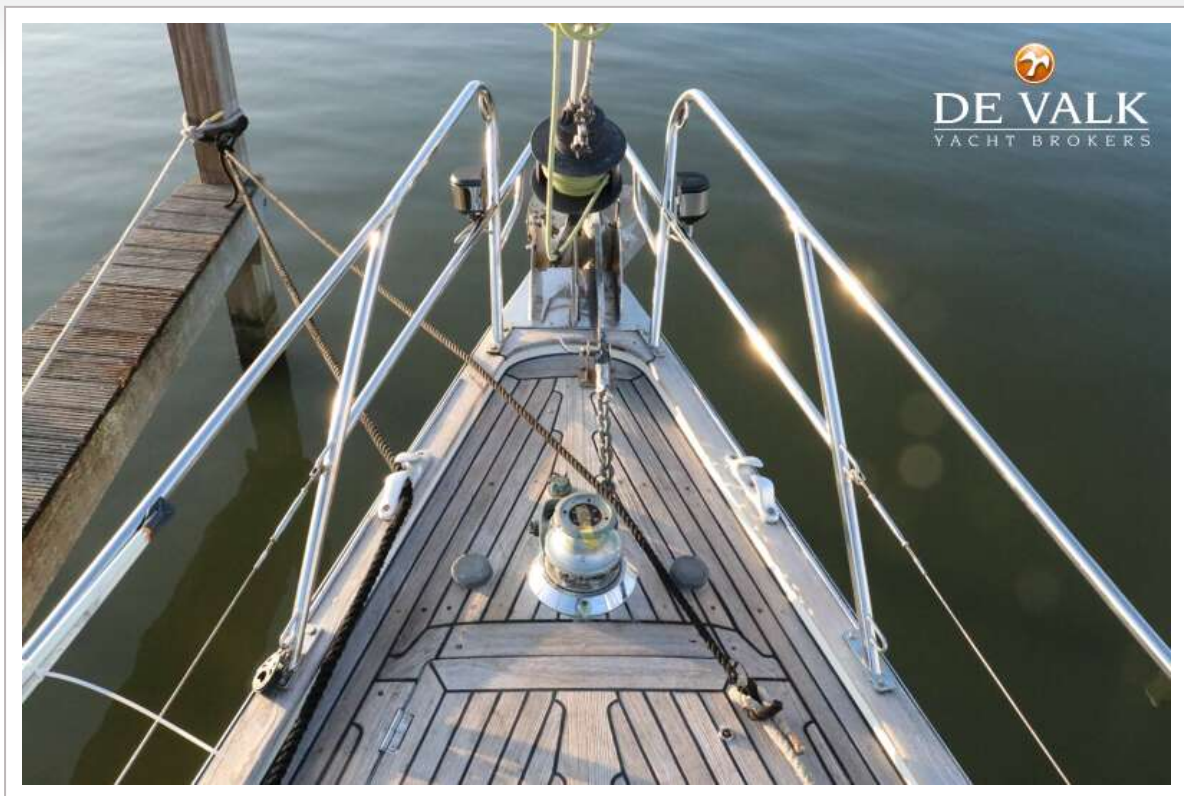




CONTEST 48CS



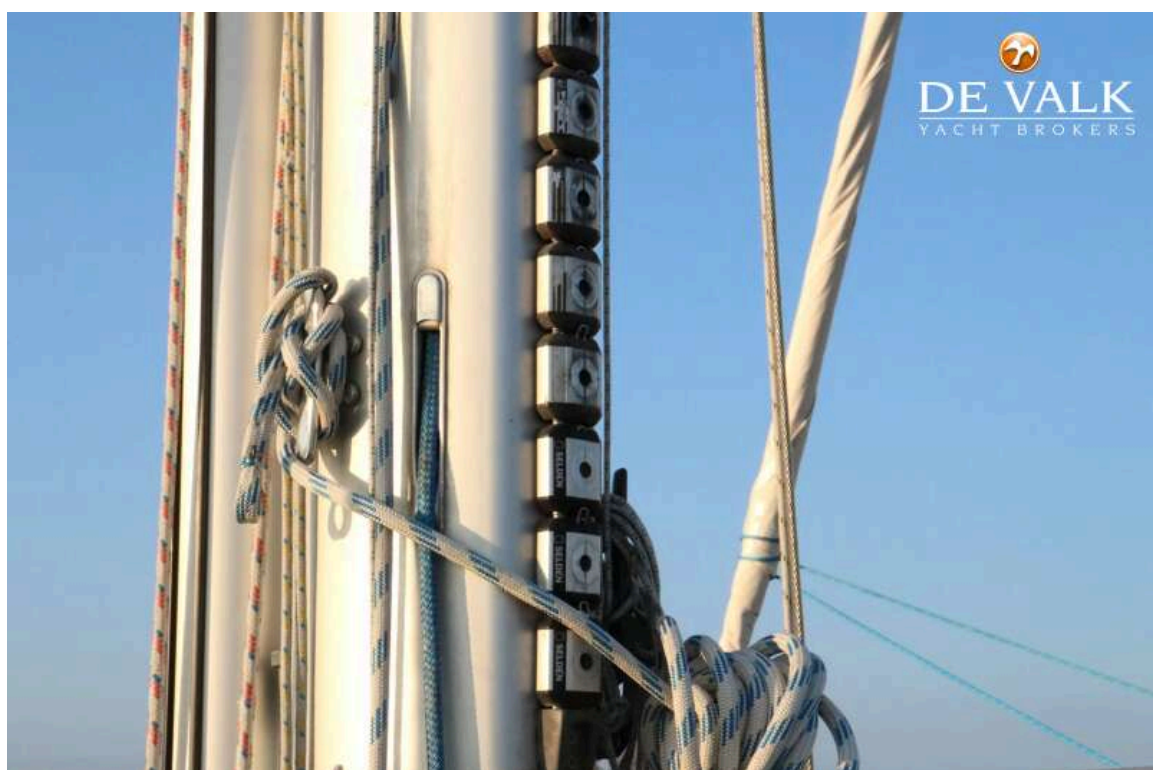
CONTEST 48CS



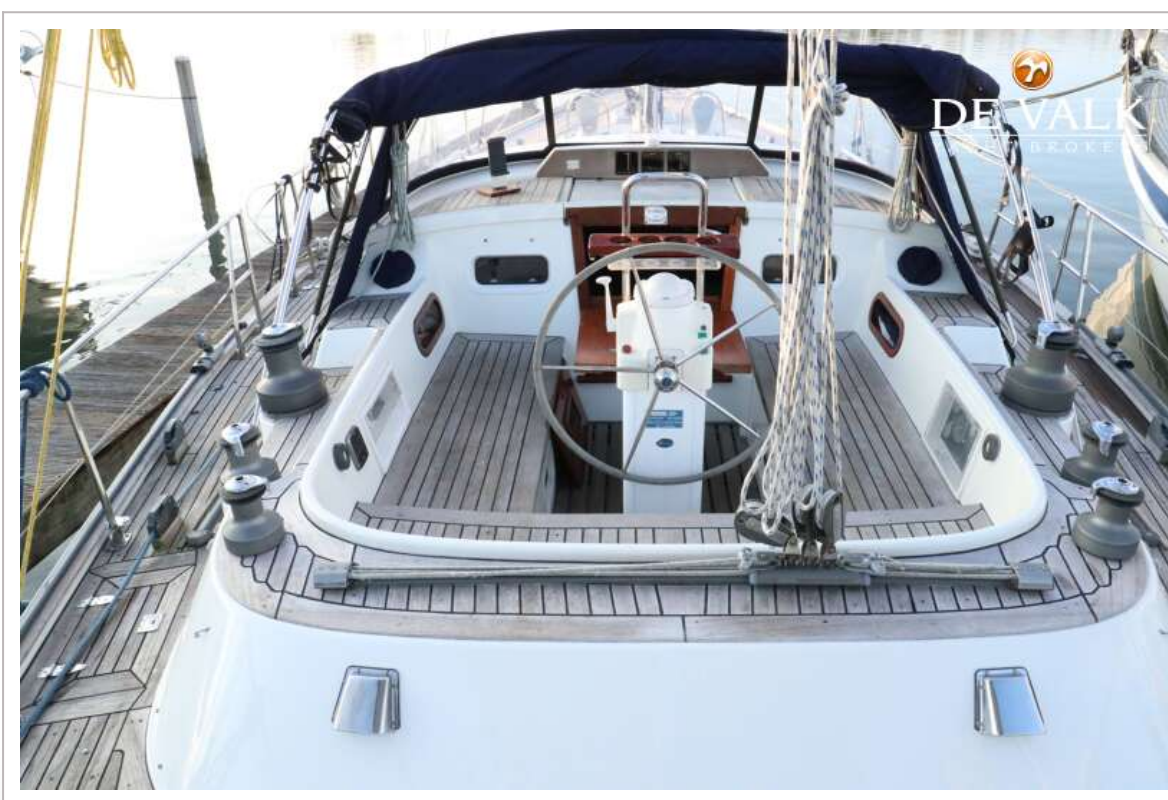
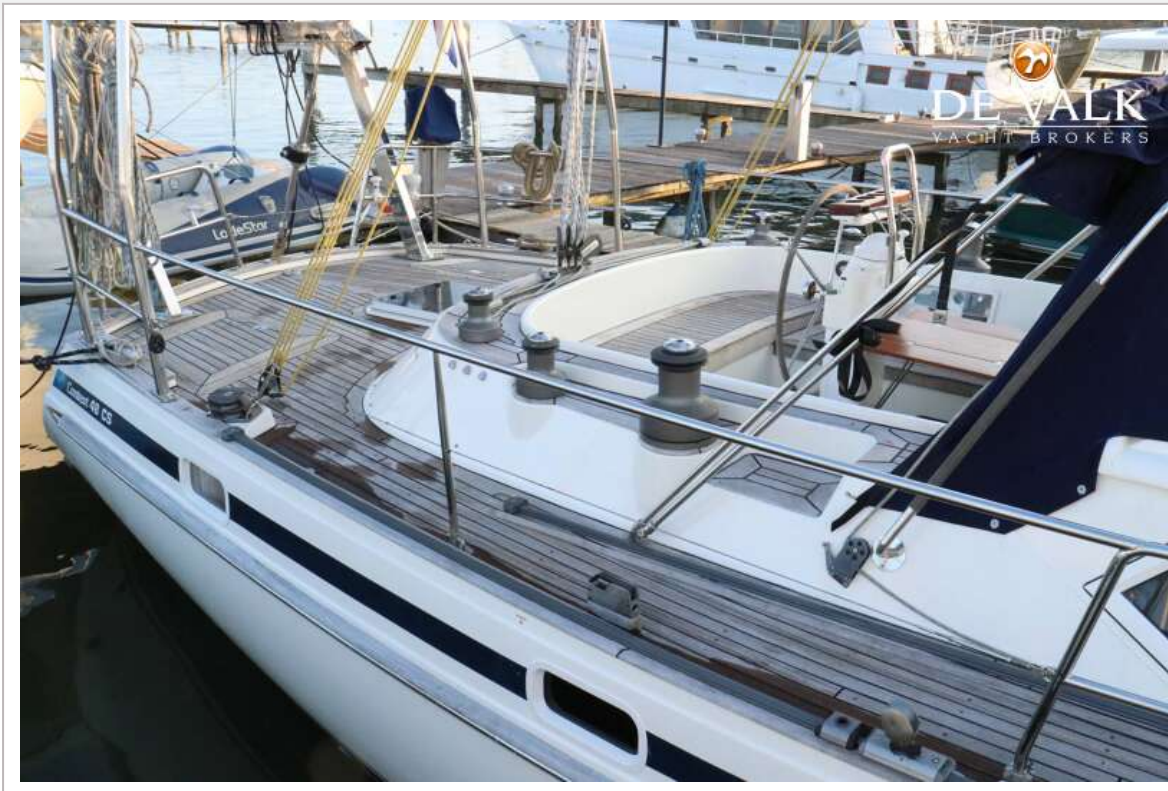
CONTEST 48CS



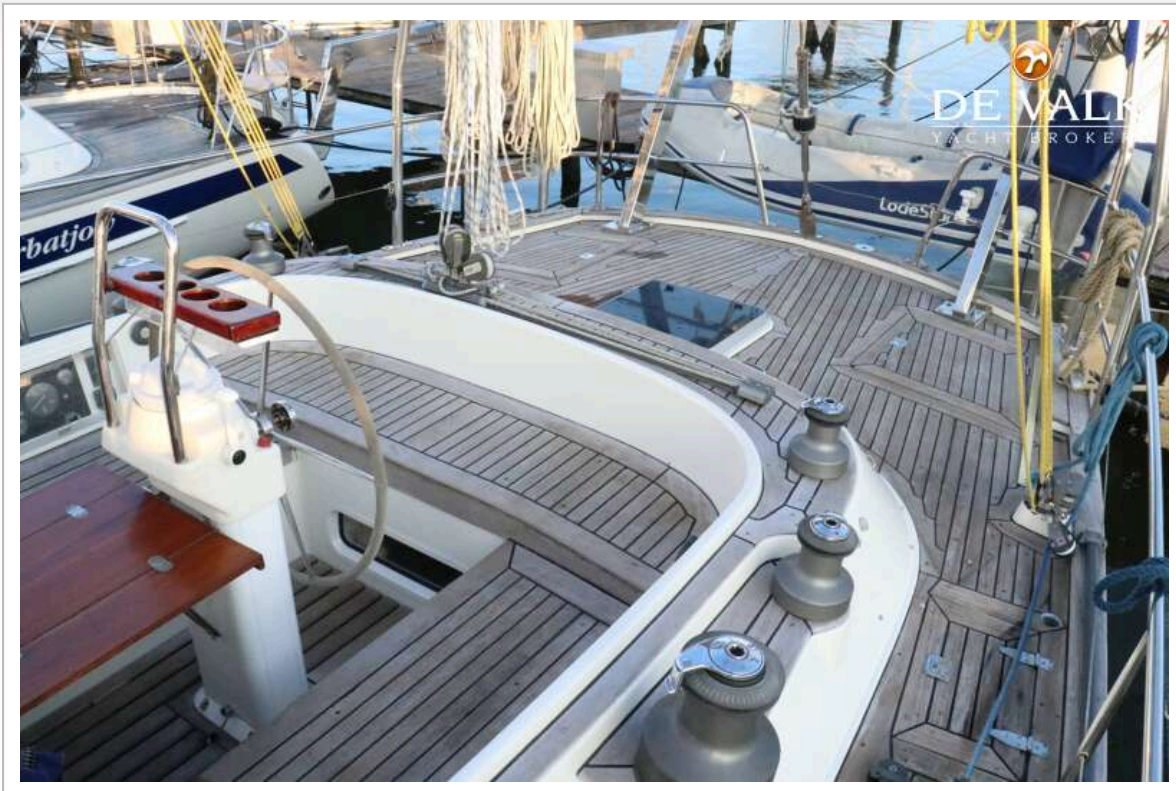
CONTEST 48CS



CONTEST 48CS



CONTEST 48CS



CONTEST 48CS



CONTEST 48CS



CONTEST 48CS



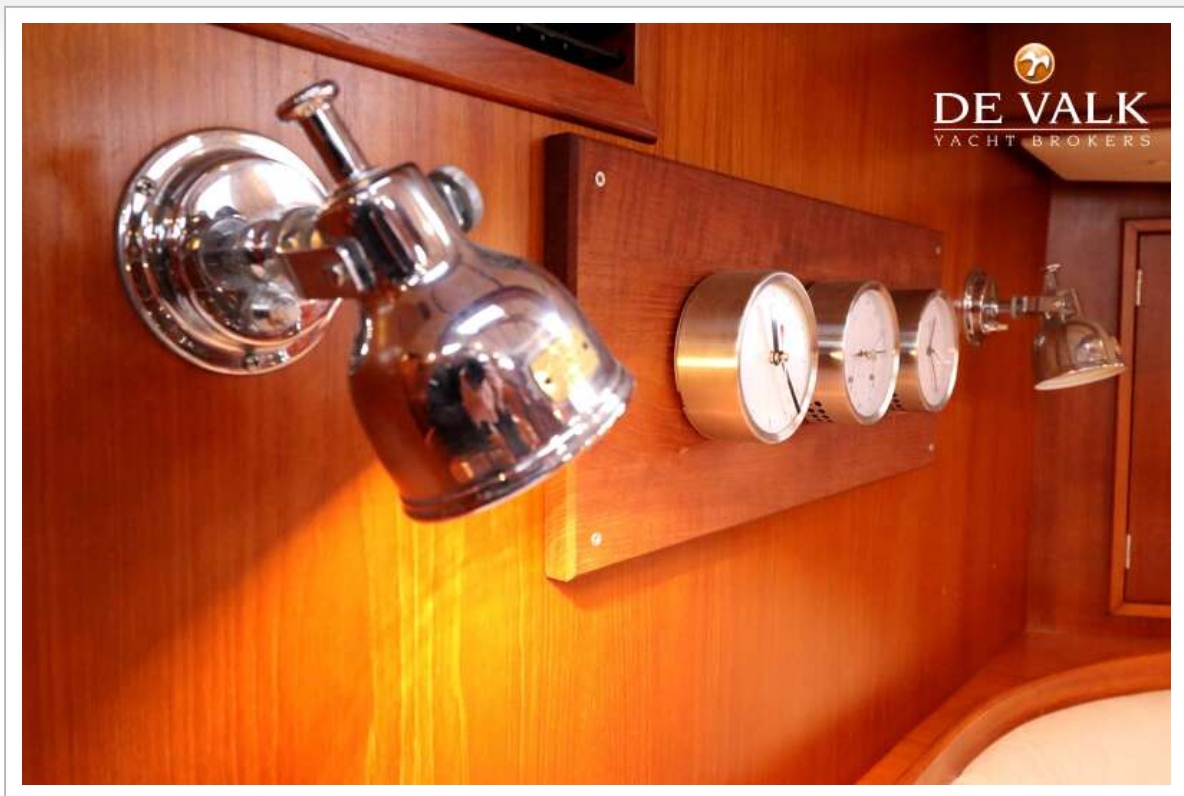
CONTEST 48CS



CONTEST 48CS



CONTEST 48CS



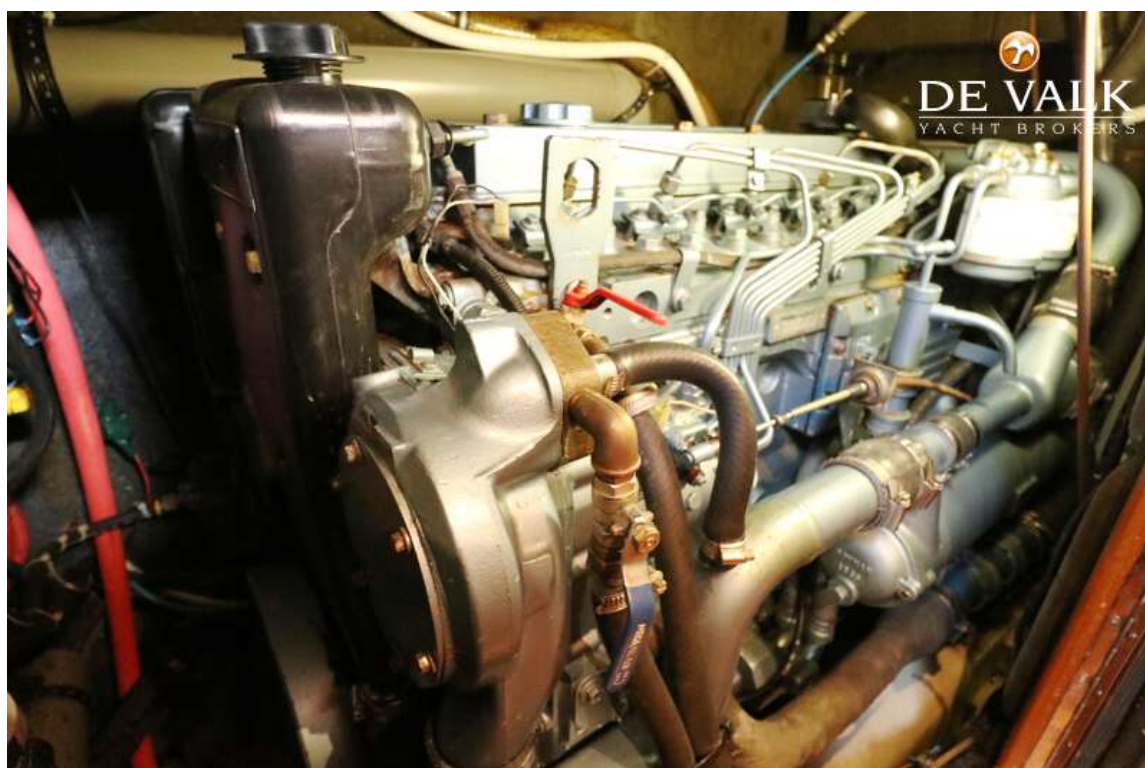
CONTEST 48CS



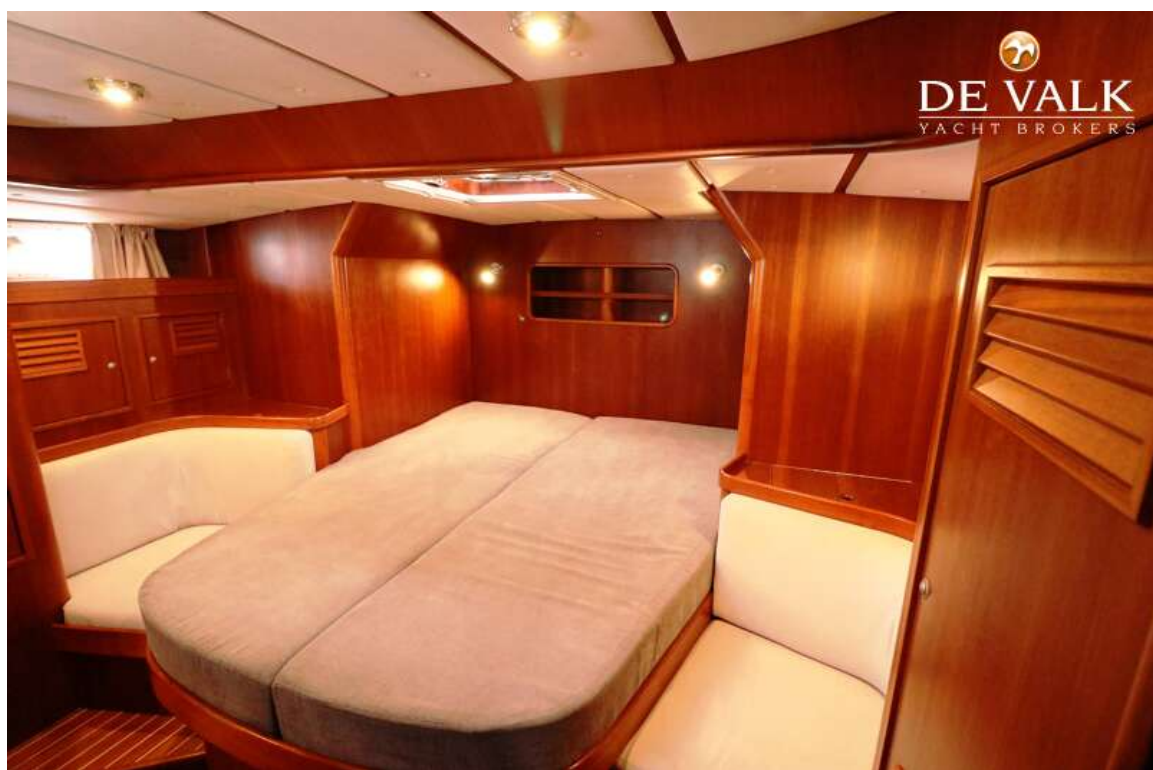
CONTEST 48CS



CONTEST 48CS



CONTEST 48CS



CONTEST 48CS

