



DE VALK
YACHT BROKERS



GULLET 38M



DE VALK
YACHT BROKERS

BROKERAGE | CHARTER | BERTHS | FINANCE | INSURANCE | YACHT MANAGEMENT

BROKER'S COMMENTS

MATINA is an impressive motor sailer of 125 feet with a beam of over 30 feet, making her extremely wide, and a sail area of over 1500 square feet. She is perfect for a large group of up to eighteen passengers which are accommodated in eight large staterooms each with their own bath en-suite. There are two staterooms with a double bed, four with twin beds & two each with a double and single bed. Two Pullman berths make for 20 pax total. Dining is enjoyed in her mahogany paneled salon around a teak table that seats up to eighteen or on the aft deck al fresco. She can cruise with 49 passengers.

Sofia Ilia-Salvanou

SPECIFICATIONS

Dimensions	38.00 x 9.40 x 3.90 (m)	Builder	
Built	2000	Cabins	8
Material	Wood	Berths	18
Engine(s)	1 x Caterpillar diesel	Hp/Kw	542.00 (hp), 398.91 (kw)
Asking price	€ 1.000.000 (VAT Not paid)	Lying	elsewhere / Not at sales office

CONTACT

Sales office	De Valk Corfu	Telephone	(+30) 266 111 8095
Address	New Port of Corfu, near Gouvia Marina 490 83 Corfu GR	E-mail	corfu@devalk.nl

DISCLAIMER

These particulars are given in good faith as supplied but cannot be guaranteed.



GENERAL

Model	GULLET 38M
Type	motorsailer
LOA (m)	38,00
Beam (m)	9,40
Draft (m)	3,90
Year built	2000
Country	Turkey
Gross tonnage	250
Hull material	wood
Deck material	teak
Deckhatch	yes
Fuel tank (litre)	15.000
Freshwater tank (litre)	yes
Blackwater tank (litre)	yes
Wheel steering	yes

ACCOMMODATION

Cabins	8
Berths	18
Crew cabin	yes
Crew berths	5
Layout	yes
Floor	yes
Saloon	yes
Air-conditioning	yes
Chart table	yes
Dining room	yes
Galley	yes
Countertop	yes
Sink	yes



Cooker	yes
Oven	yes
Microwave	yes
Fridge	yes
Freezer	yes
Wine cooler	yes
Water pressure system	yes
Coffee maker	yes
Crockery	yes
Owners cabin	yes
Guest cabin 1	yes
Guest cabin 2	yes
Guest cabin 3	yes
Guest cabin 4	yes
Washing machine	yes
Washing machine/dryer combi	yes
Ironing facilities	yes
Wet bar	yes

MACHINERY

No of engines	1
Make	Caterpillar
HP	542
kW	398.91
Fuel	diesel
Maximum speed (kn)	12
Cruising speed (kn)	11
Bowthruster	yes
Bilge alarm	yes
Generator	yes
Batteries	yes



Start battery	yes
Service battery	yes
Battery monitor	yes
Battery charger	yes
Wind generator	yes
Shorepower	yes

NAVIGATION

Compass	yes
Depth sounder	yes
VHF	yes
Autopilot	yes
Plotter/GPS	yes
EPIRB	yes
Navigation lights	yes

EQUIPMENT

Bimini	yes
Sun awning	yes
Cockpit cushions	yes
Cockpit table	yes
Bathing platform	yes
Gangway	yes
Deck shower	yes
Anchor	yes
Anchor chain	yes
Windlass	yes
Dinghy	yes
Outboard	yes
Davits	yes
Sea railing	yes



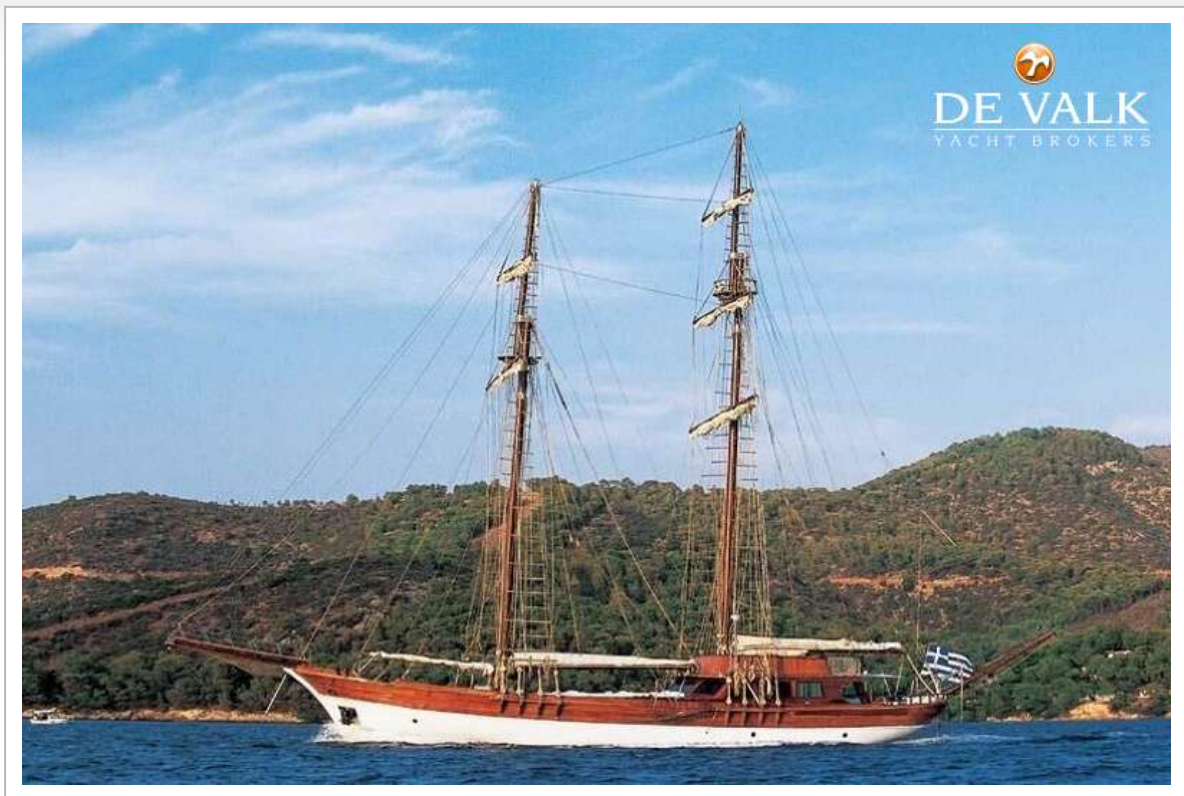
Grab rail (superstructure)	yes
Life raft	yes
Lifejackets	yes
Binocular	yes
Radar reflector	yes
Fenders	yes
Mooring lines	yes
Spare parts	yes
Tools	yes
TV	yes
Radio-cd player	yes
Cockpit speakers	yes
Clock - barometer	yes
Fire extinguisher	yes
Latest extinguisher survey	2022
Extinguisher in engine room	yes

RIGGING

Rigging	yes
Standing rigging	yes
Material mast	wood
Spreaders	yes
Mainsail	yes
Mizzen	yes
Genoa	yes



GULLET 38M



GULLET 38M



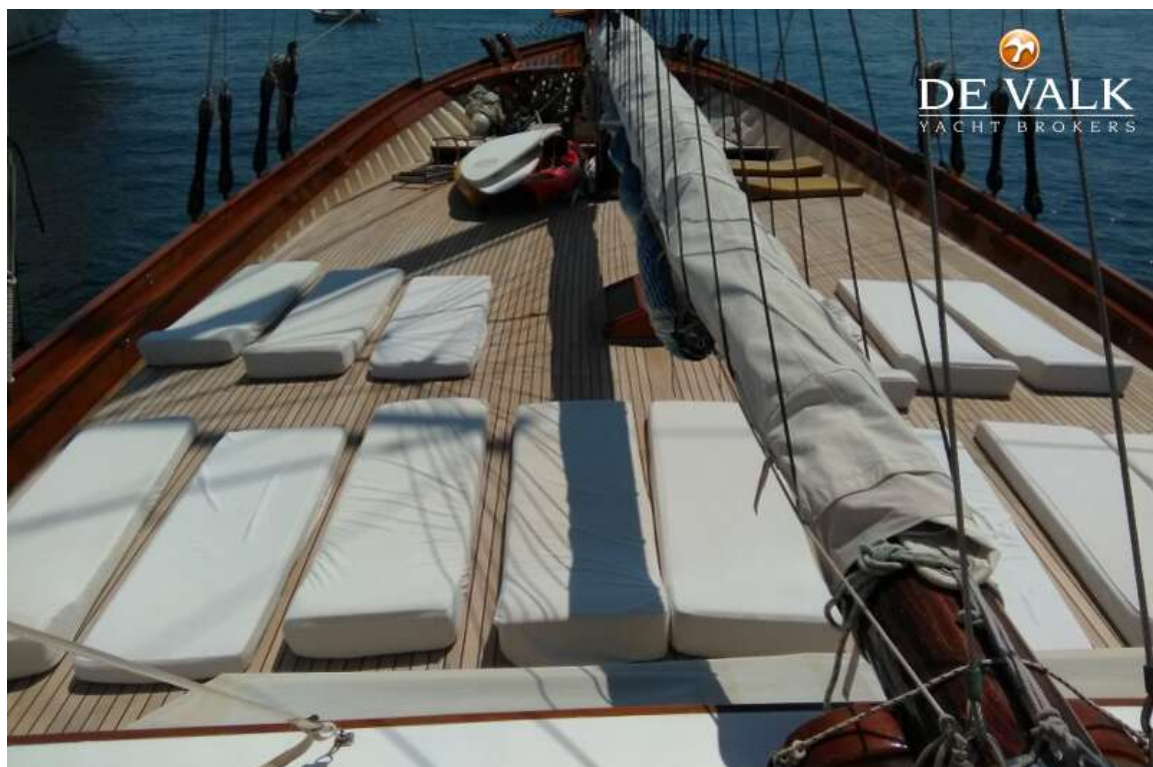
GULLET 38M



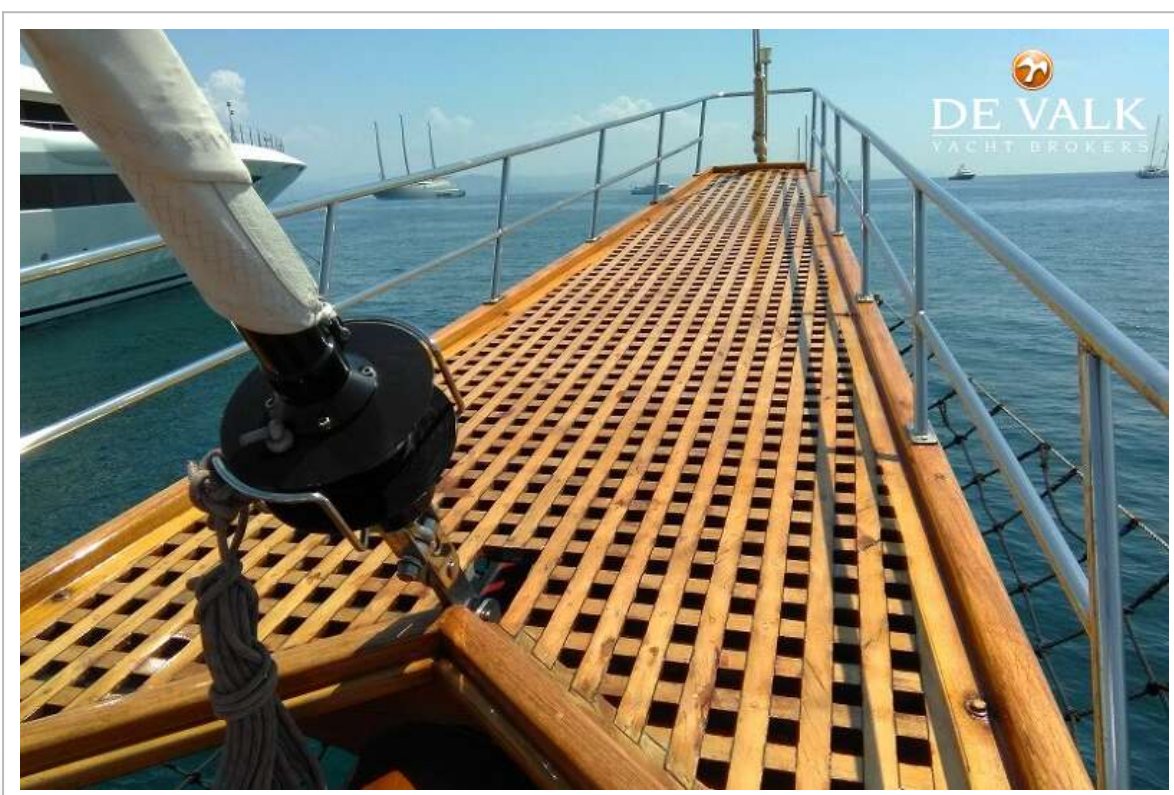
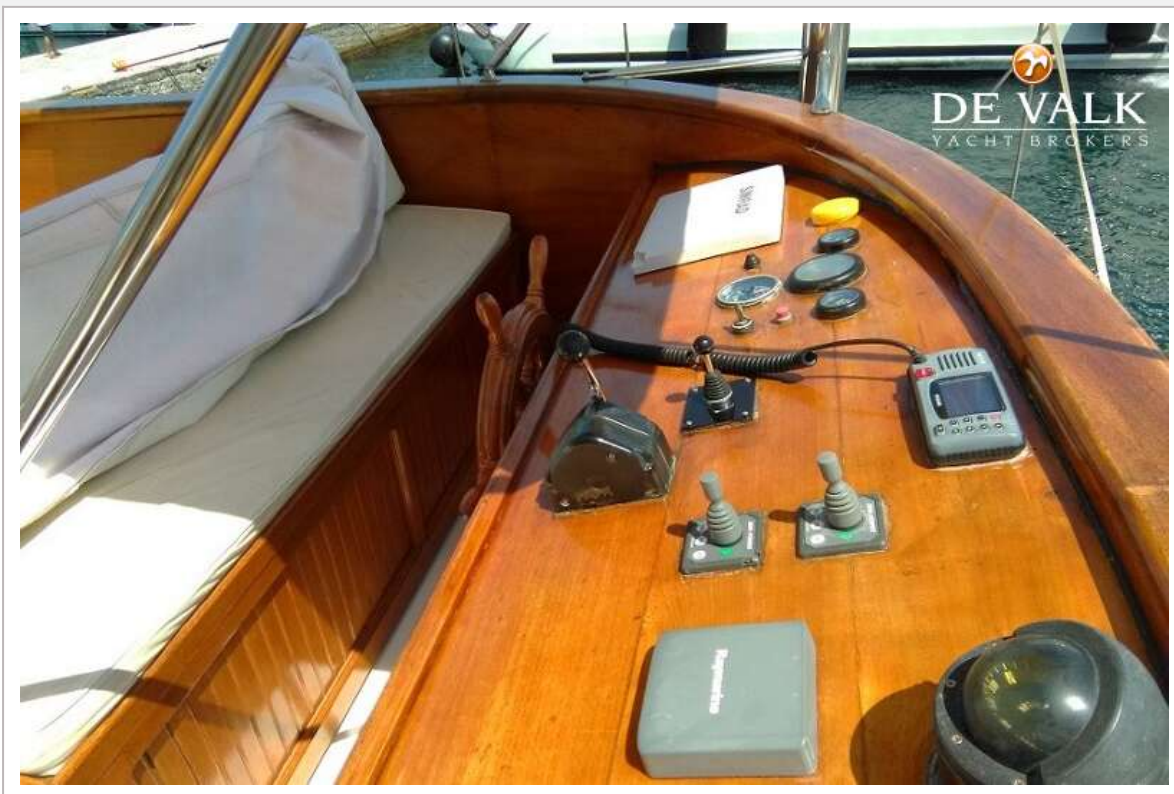
GULLET 38M



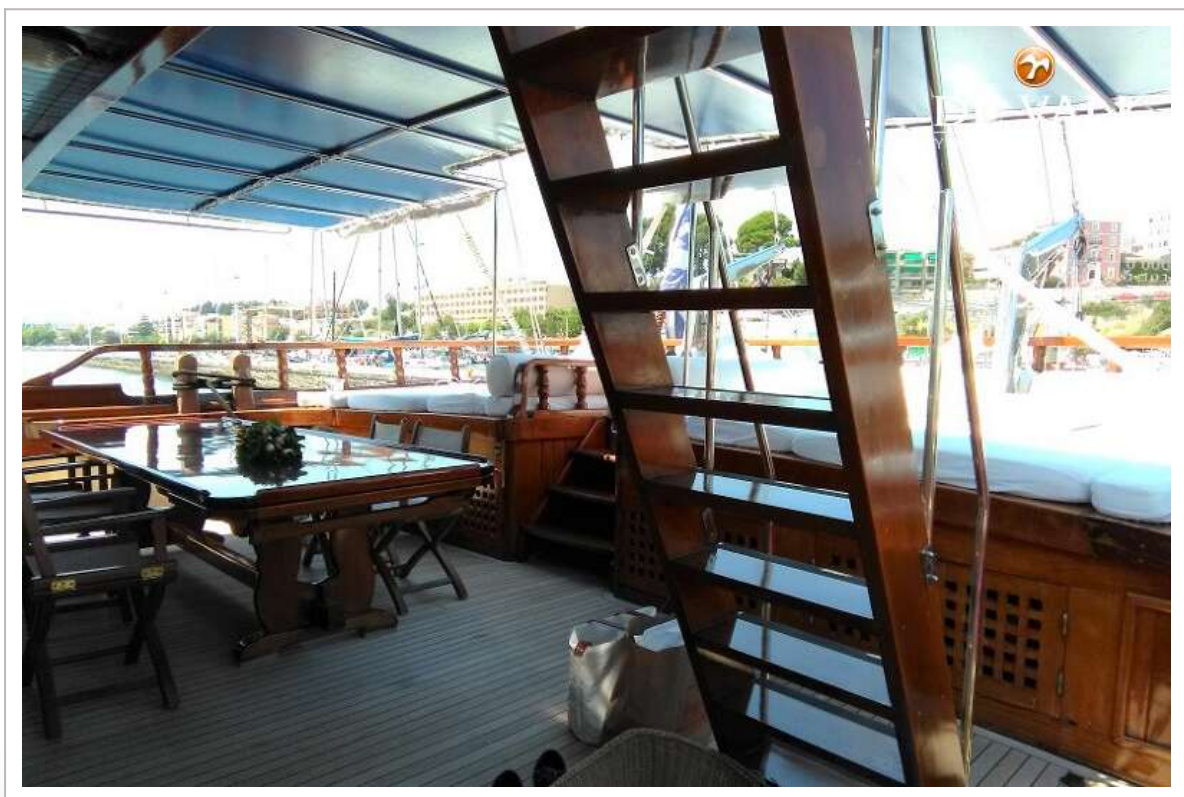
GULLET 38M



GULLET 38M



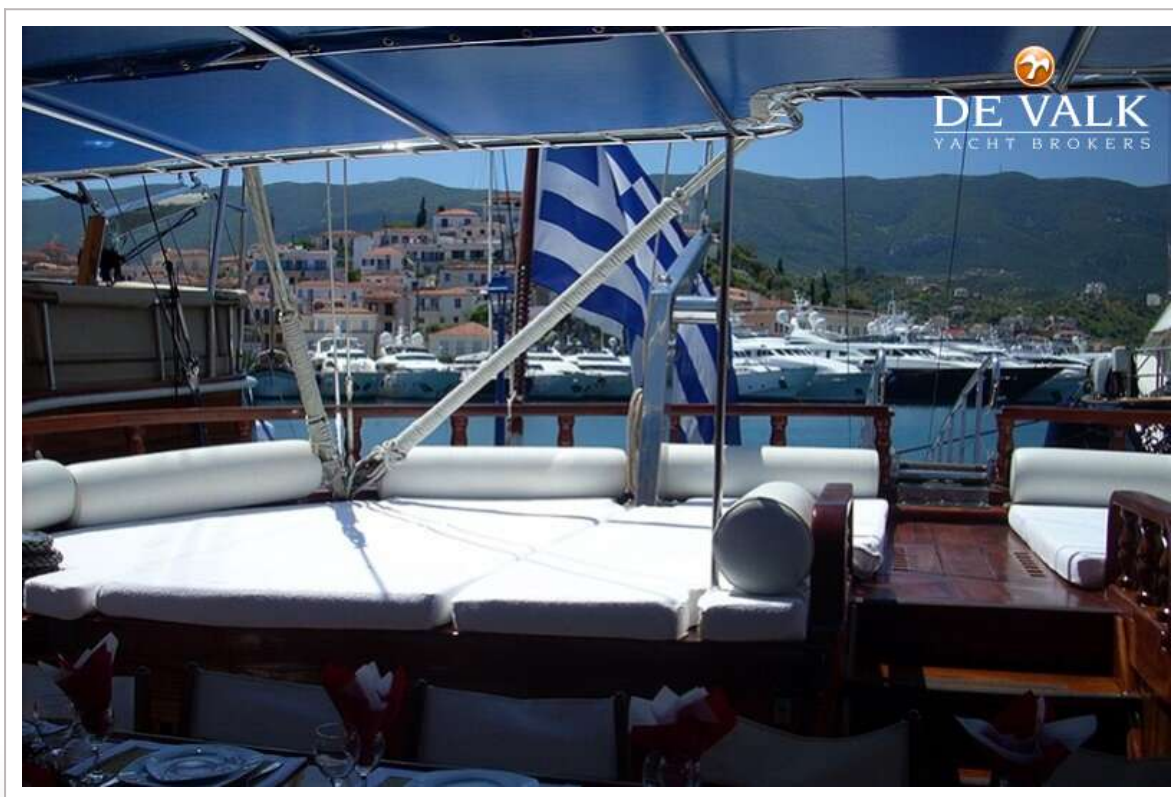
GULLET 38M



GULLET 38M



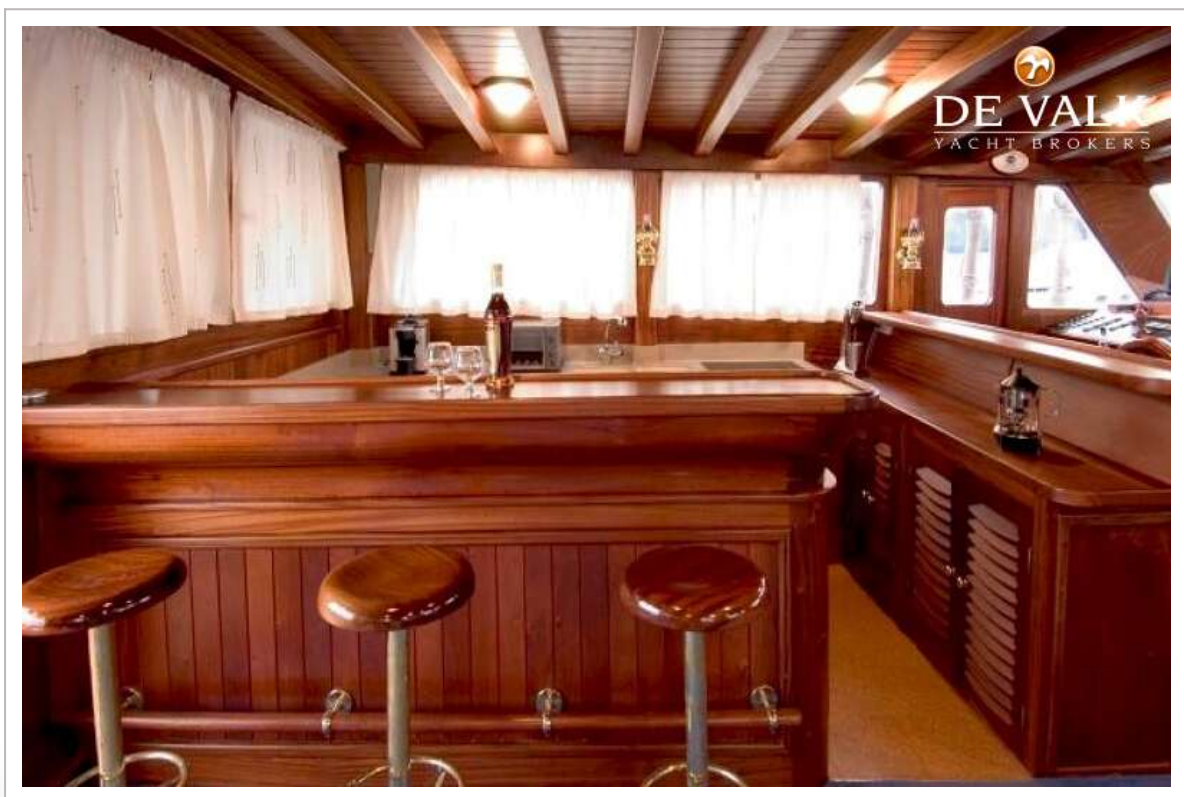
GULLET 38M



GULLET 38M



GULLET 38M



GULLET 38M



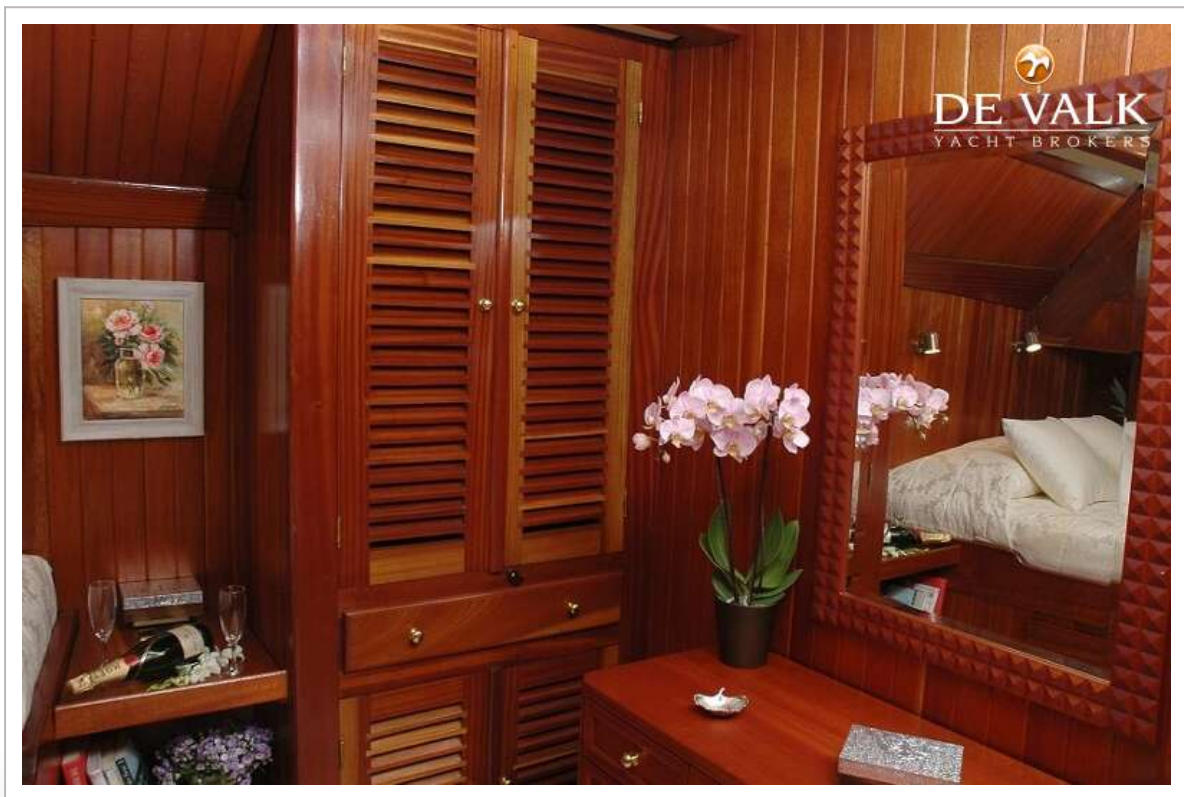
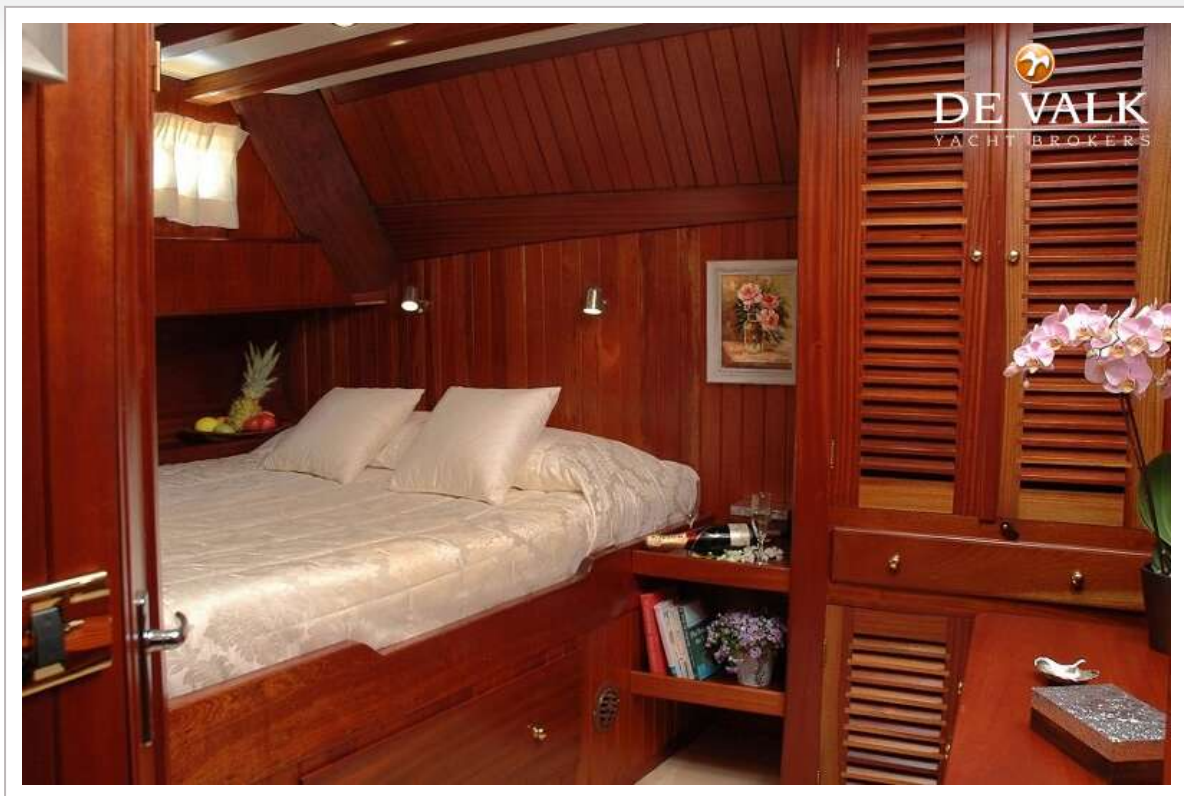
GULLET 38M



GULLET 38M



GULLET 38M



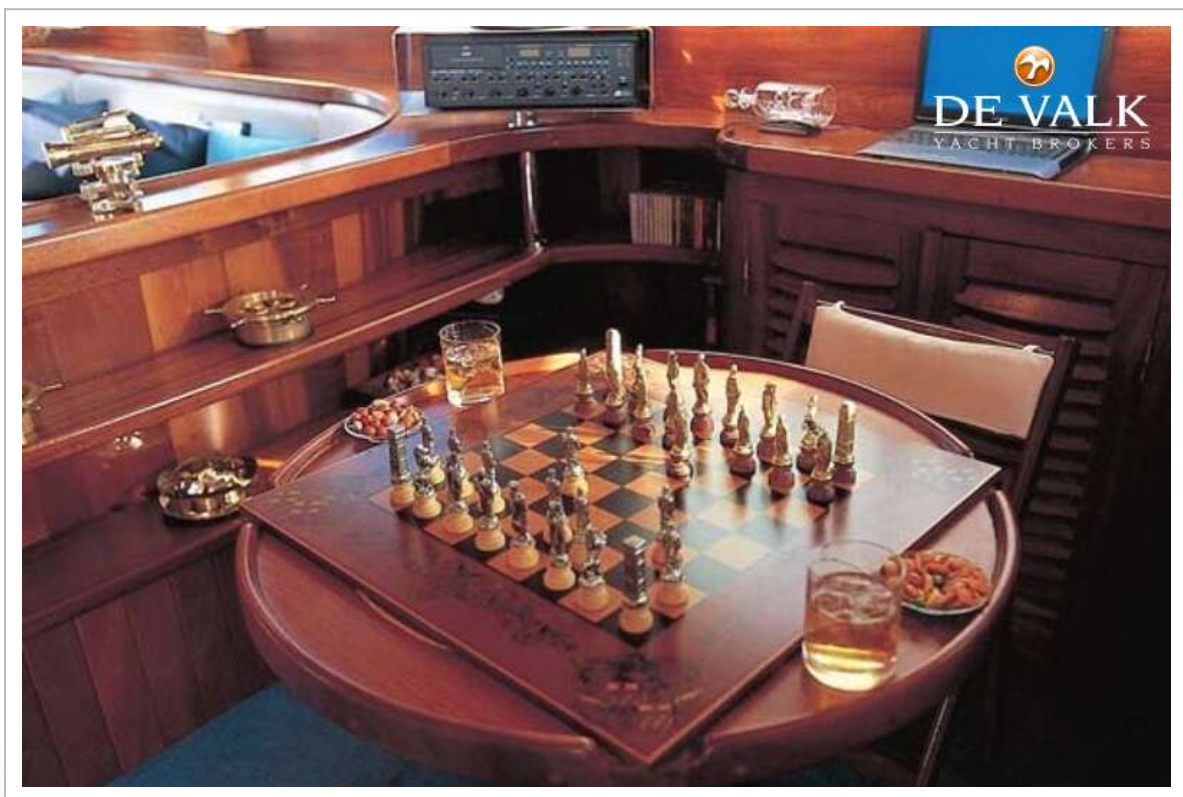
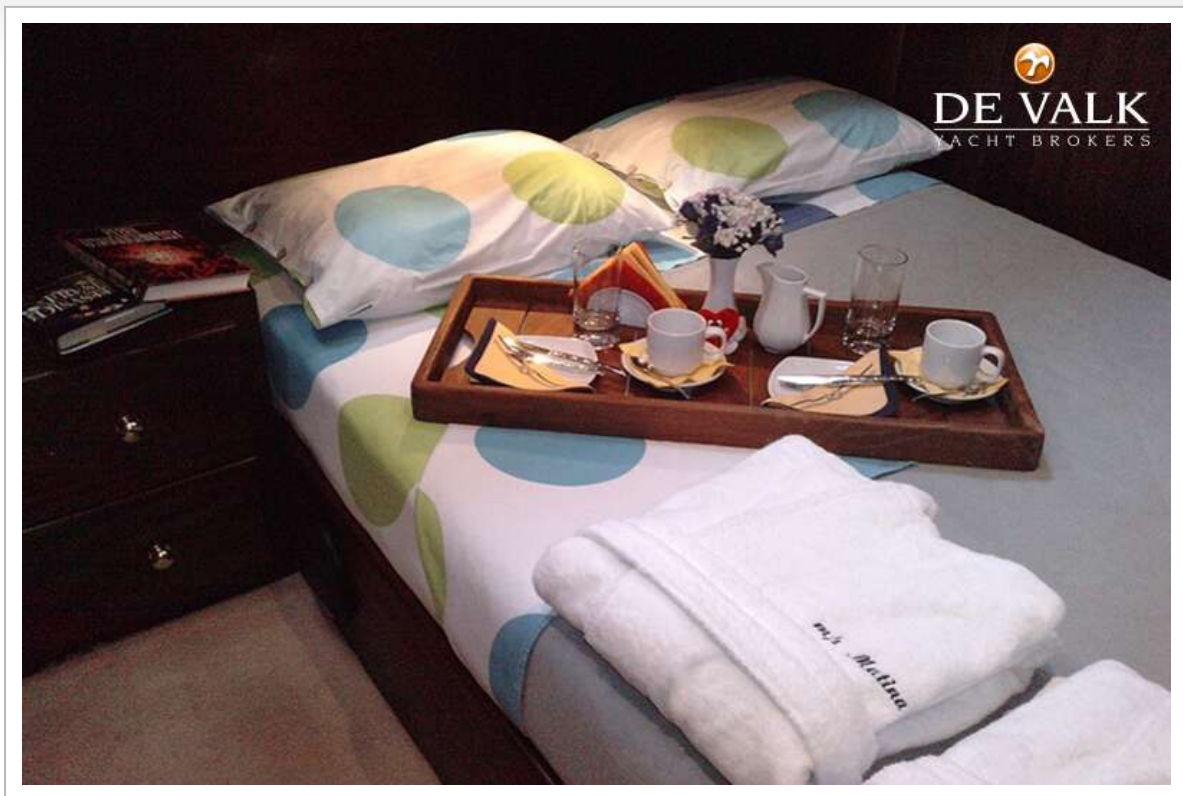
GULLET 38M



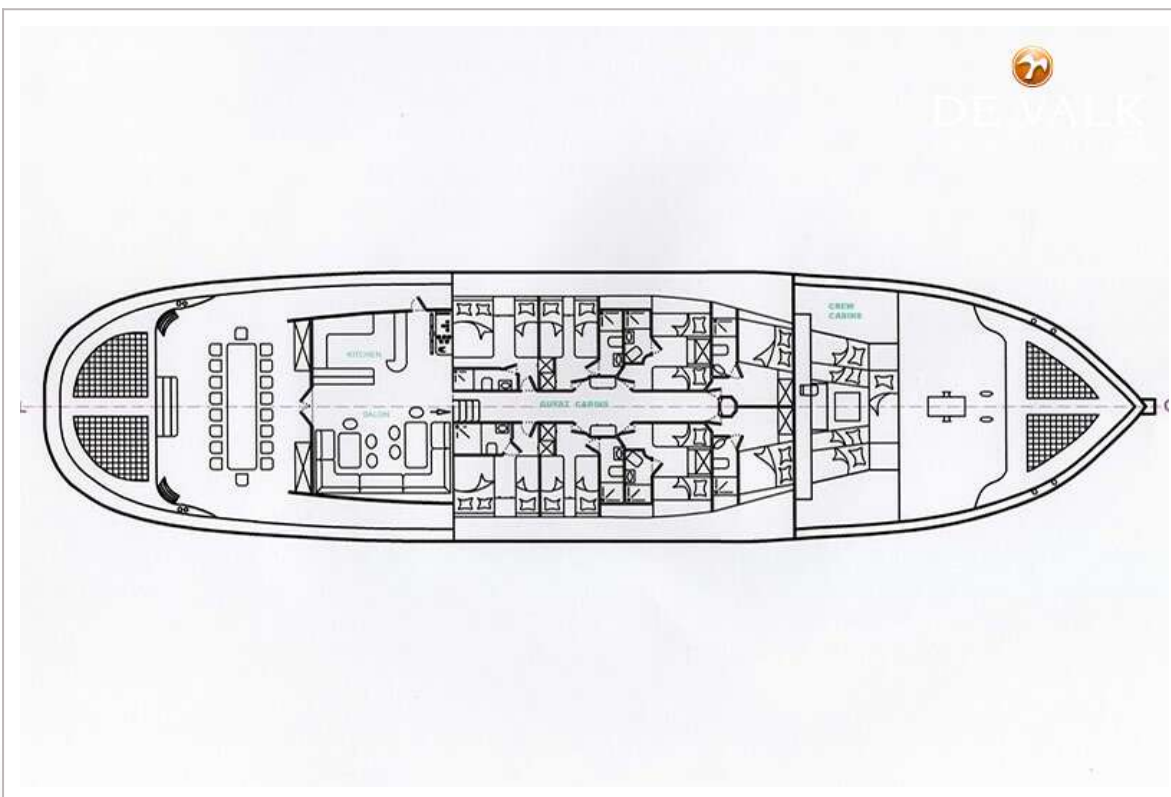
GULLET 38M



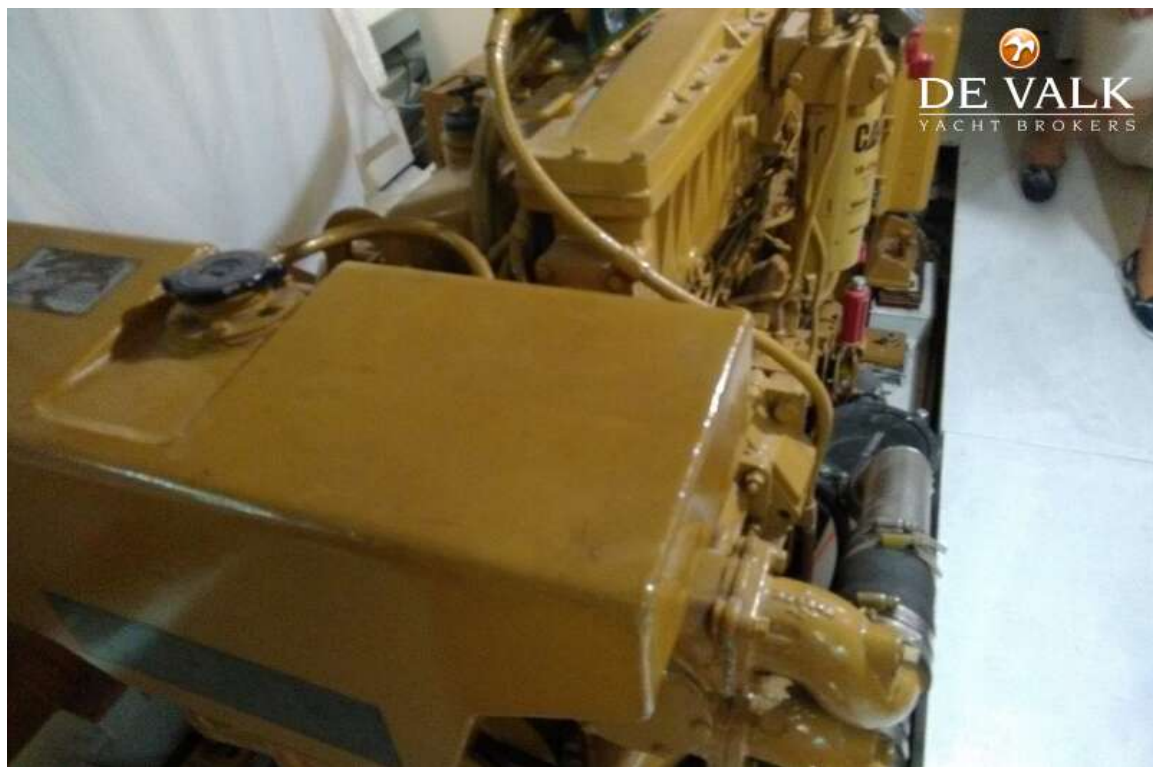
GULLET 38M



GULLET 38M



GULLET 38M



GULLET 38M



GULLET 38M

