



DE VALK  
YACHT BROKERS



BOSTROM 37



DE VALK  
YACHT BROKERS

## BROKER'S COMMENTS

This Bostrom 37 was built at the Porali Marin yard in Sweden, the same yard as Hallberg Rassy's and Najad's at the time. She is a good example of a seagoing, safe cruising yacht. Excellent design with performance under sail, spacious accommodation and a large centre cockpit and 2 spacious cabins forward and aft. This Bostrom 37 is therefore extremely suitable for both long and short stays and can be viewed at our Hindeloopen location.

*Henri van Eelen*

## SPECIFICATIONS

<b>Dimensions</b>	11.05 x 3.95 x 1.95 (m)	<b>Builder</b>	Porali Marin AG
<b>Built</b>	1980	<b>Cabins</b>	2
<b>Material</b>	GRP	<b>Berths</b>	7
<b>Engine(s)</b>	1 x Volvo Penta MD21B diesel	<b>Hp/Kw</b>	45.00 (hp), 33.12 (kw)
<b>Asking price</b>	sold (VAT )	<b>Lying</b>	elsewhere / Not at sales office

## CONTACT

<b>Sales office</b>	De Valk Hindeloopen	<b>Telephone</b>	+31 514 52 40 00
<b>Address</b>	Oosterstrand 1 8713 JS Hindeloopen The Netherlands	<b>E-mail</b>	hindeloopen@devalk.nl

## DISCLAIMER

These particulars are given in good faith as supplied but cannot be guaranteed.



## GENERAL

Model	BOSTROM 37
Type	sailing yacht
LOA (m)	11,05
LWL (m)	9,45
Beam (m)	3,95
Draft (m)	1,95
Air draft (m)	17,70
Headroom (m)	1,90
Year built	1980
Builder	Porali Marin AG
Country	Sweden
Designer	Bruno Boström
Displacement (t)	8
Ballast (tonnes)	lead 3.4
Hull material	GRP
Hull colour	white
Hull shape	round-bilged
Keel type	fin keel
Superstructure material	GRP
Rubbing strake	plastic
Deck material	GRP
Deck finish	teak
Superstructure deck finish	non-skid moulded in
Cockpit deck finish	teak
Antifouling (year)	2021
Window material	tempered glass
Deckhatch	3x
Fuel tank (litre)	aluminium 70L
Level indicator (fuel tank)	yes
Freshwater tank (litre)	GRP 100L



Level indicator (freshwater)	yes
Blackwater tank (litre)	GRP
Blackwater tank extraction	pump
Wheel steering	cable steering

## ACCOMMODATION

Cabins	2
Berths	7
Interior	mahogany
Floor	wood
Open cockpit	yes
Aft deck	yes
Headroom saloon (m)	1.90 mtr.
Heating	diesel ducted hot air
Navigation center	yes
Chart table	yes
Aft Cabin	yes
Galley	yes
Countertop	plastic
Sink	stainless steel 2x
Cooker	calor gas   ENO
Gas alarm	yes
Fridge	yes
Hot water system	220V + engine
Water pressure system	electrical
Manual and/or foot pump	yes
Owners cabin	v-bed
Bed length (m)	yes
Wardrobe	hanging
Guest cabin 1	double bed
Bed length (m)	yes



<b>Bathroom</b>	shared
<b>Toilet</b>	Jabsco
<b>Toilet system</b>	manual
<b>Wash basin</b>	yes

## MACHINERY

<b>No of engines</b>	1
<b>Make</b>	Volvo Penta
<b>Type</b>	MD21B
<b>HP</b>	45
<b>kW</b>	33.12
<b>Fuel</b>	diesel
<b>Year installed</b>	1980
<b>Maximum speed (kn)</b>	7,5
<b>Cruising speed (kn)</b>	6
<b>Engine cooling system</b>	seawater
<b>Drive</b>	shaft
<b>Shaft seal</b>	yes
<b>Engine controls</b>	bowden cable
<b>Gearbox</b>	mechanical
<b>Gearbox</b>	mechanical
<b>Exhaust</b>	watercooled
<b>Propeller type</b>	fixed
<b>Propeller blades</b>	3
<b>Shaft lubrication</b>	grease
<b>Manual bilge pump</b>	yes
<b>Start battery</b>	1x   2017
<b>Service battery</b>	3x   2022
<b>Battery monitor</b>	yes
<b>Battery charger</b>	yes
<b>Solar panel</b>	2x



Shorepower with cable

## NAVIGATION

Compass	Plastimo Olympic 135
Depth sounder/log	Clipper Duet
Windset	Clipper Wind
VHF	1x Standard horizon Matrix GX2100 1x Navman 7110
VHF handheld	yes
Autopilot	Raymarine ST6001+
Plotter	Raymarine Axiom   2020
Weather receiver	yes
Navtex	MeteoMan
AIS transceiver	Class B AIS Transceiver Mariner X2
Navigation lights	yes
Searchlight	yes

## EQUIPMENT

Fixed windscreen	yes
Sprayhood with grab rail	2012
Winter cover	2017
Cockpit table	yes
Boarding ladder	stainless steel
Anchor	Fortress + line
Sea railing	wire
Pushpit	yes
Pulpit	yes
Lifebuoy	yes
Binocular	yes
Fenders	6x
Mooring lines	4x
Spare parts	yes



Tools	yes
TV	yes
Radio-cd player	AV Car Audio
Sub-woofer	yes
Clock - barometer	yes
Fire extinguisher	2022 3x

## RIGGING

Rigging	sloop
Standing rigging	wire
Brand mast	Seldén
Material mast	aluminium
Spreaders	2x
Keel stepped mast	yes
Mainsail	+ reserve
Mainsail cover	yes
Genoa	yes
Genoa furler	Seldén
Reefing System	slabreefing
Boomvang	tackle
Primary sheet winch	1x Lewmar 30 two speed
Genoa sheetwinches	2x Lewmar 48 three speed
Halyard winches	2x Lewmar 40 two speed
Reefing winch	2x Andersen Scandinavia 10 single speed

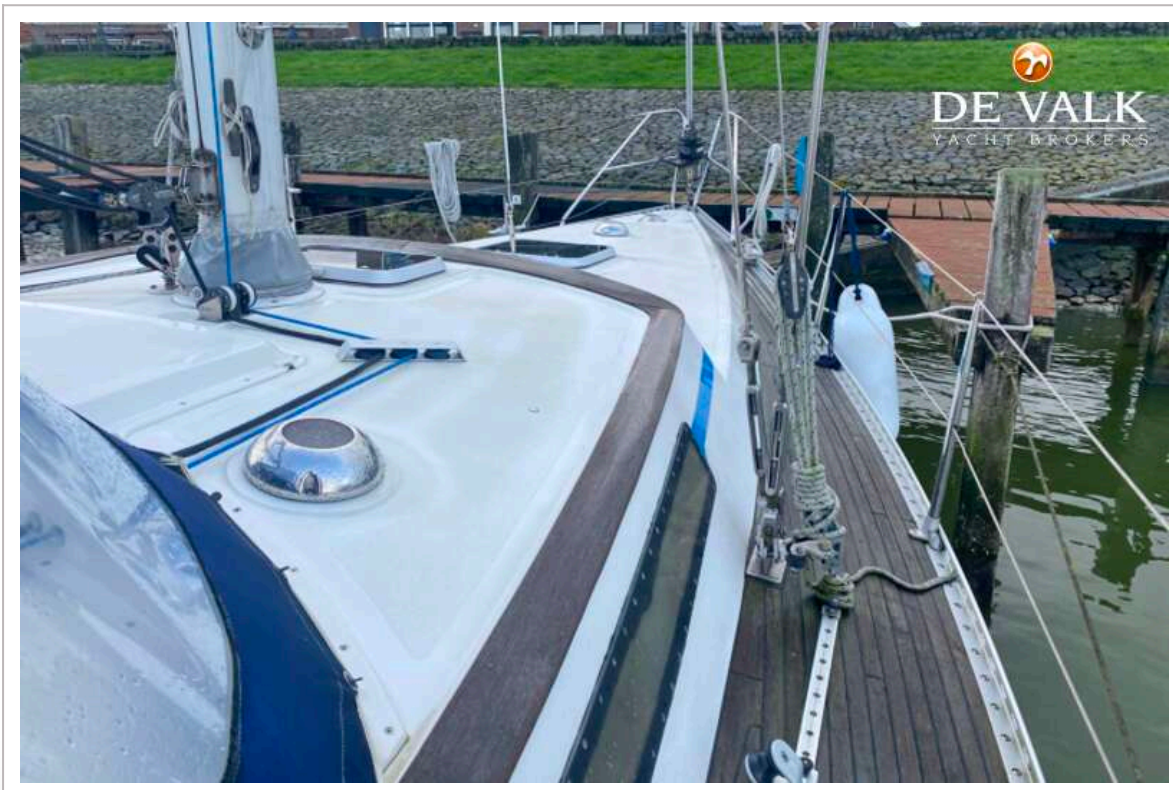


# BOSTROM 37





# BOSTROM 37



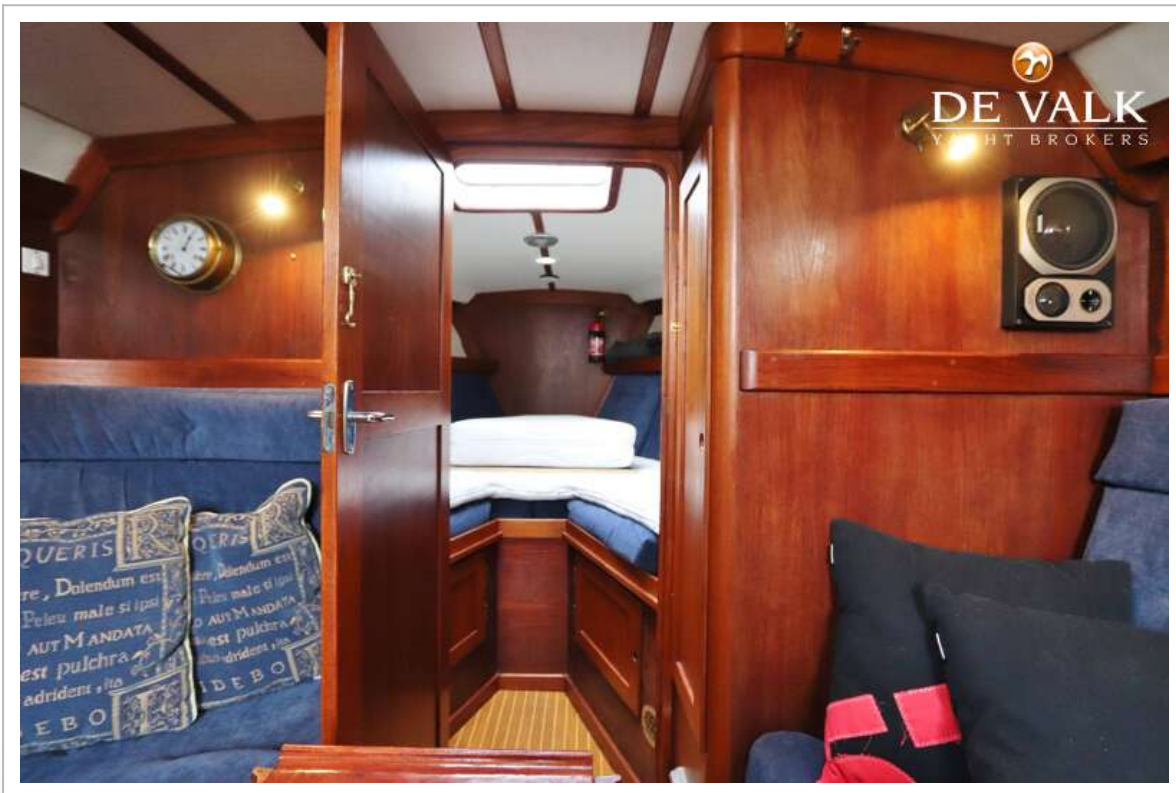
# BOSTROM 37



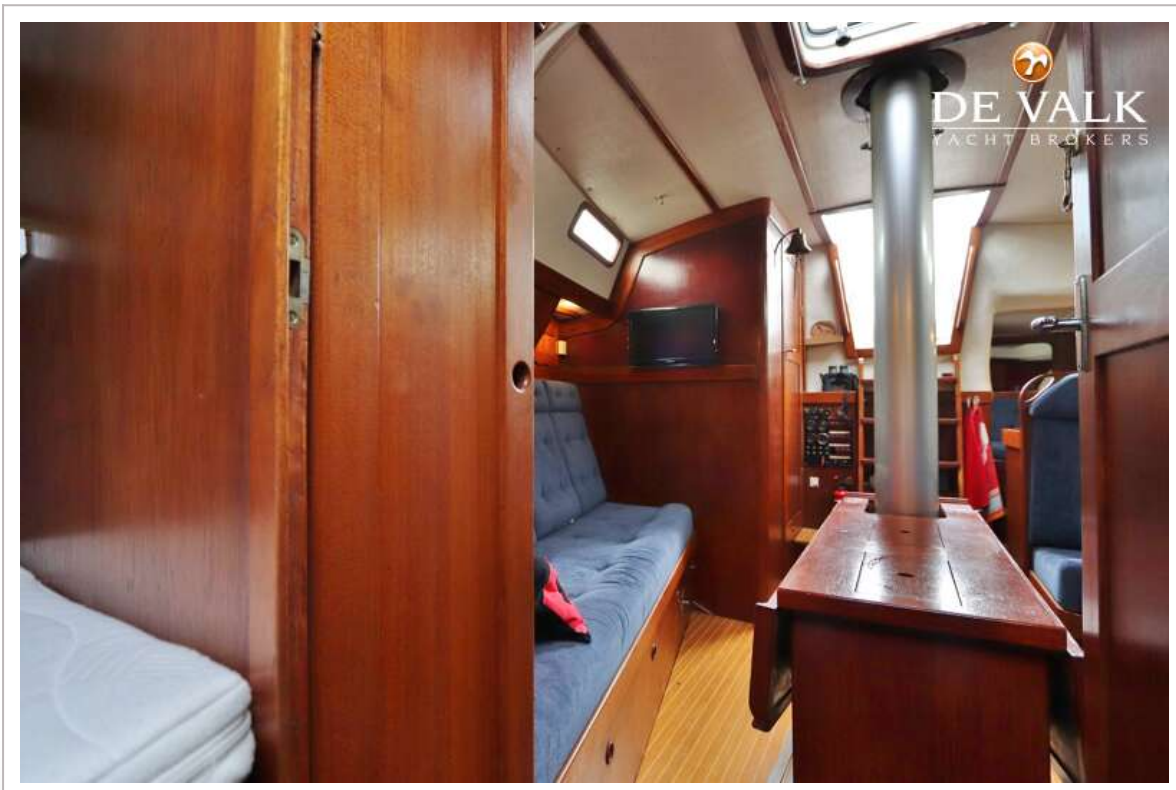
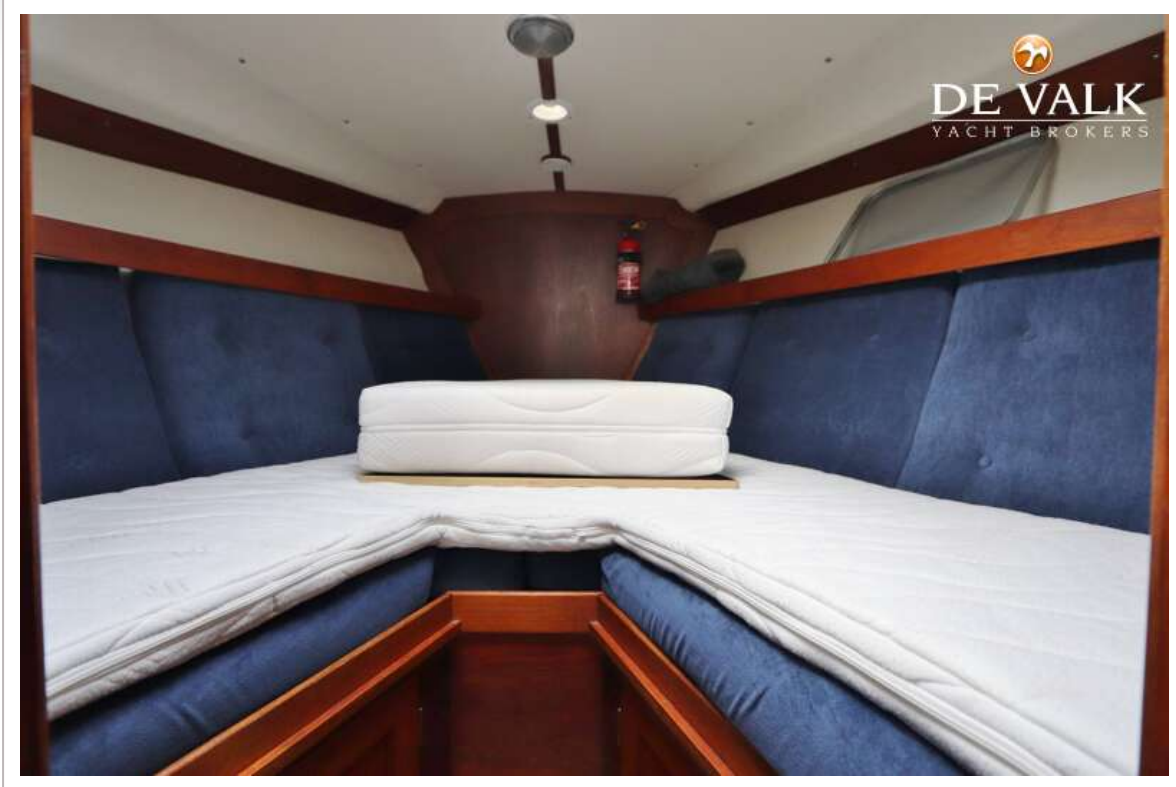
# BOSTROM 37



# BOSTROM 37



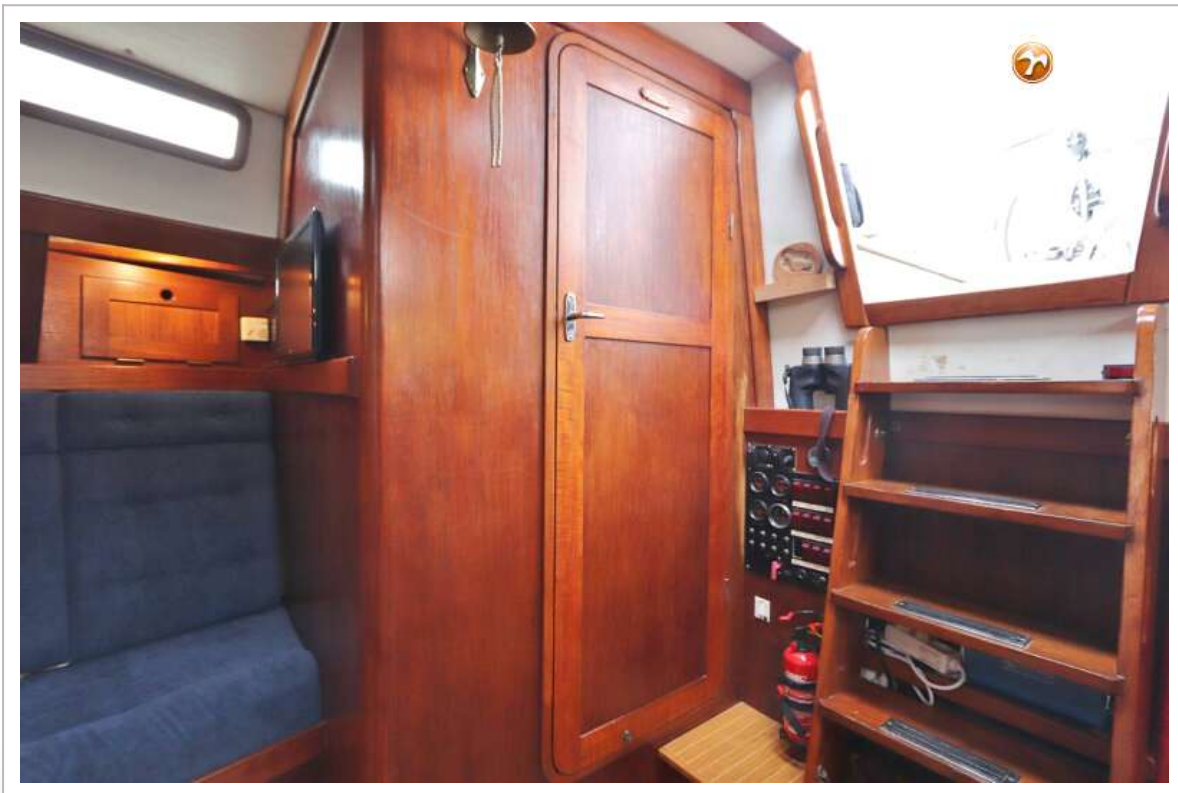
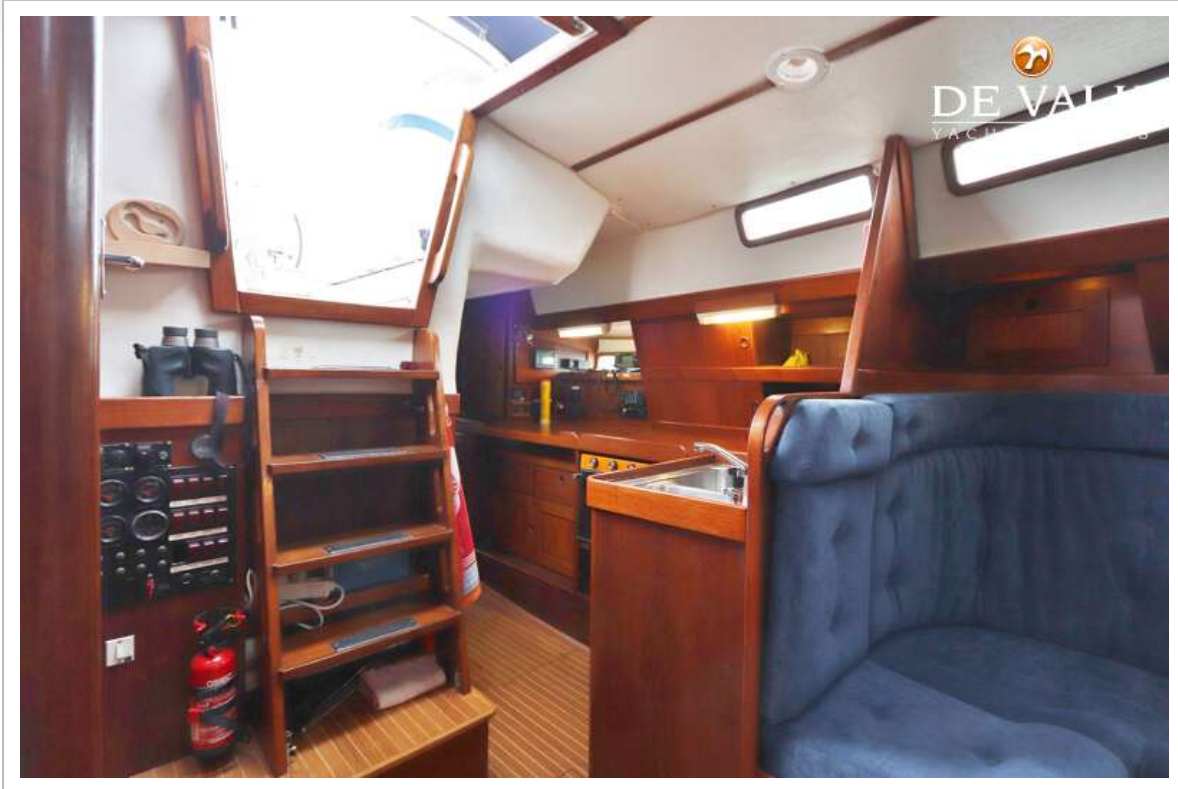
# BOSTROM 37



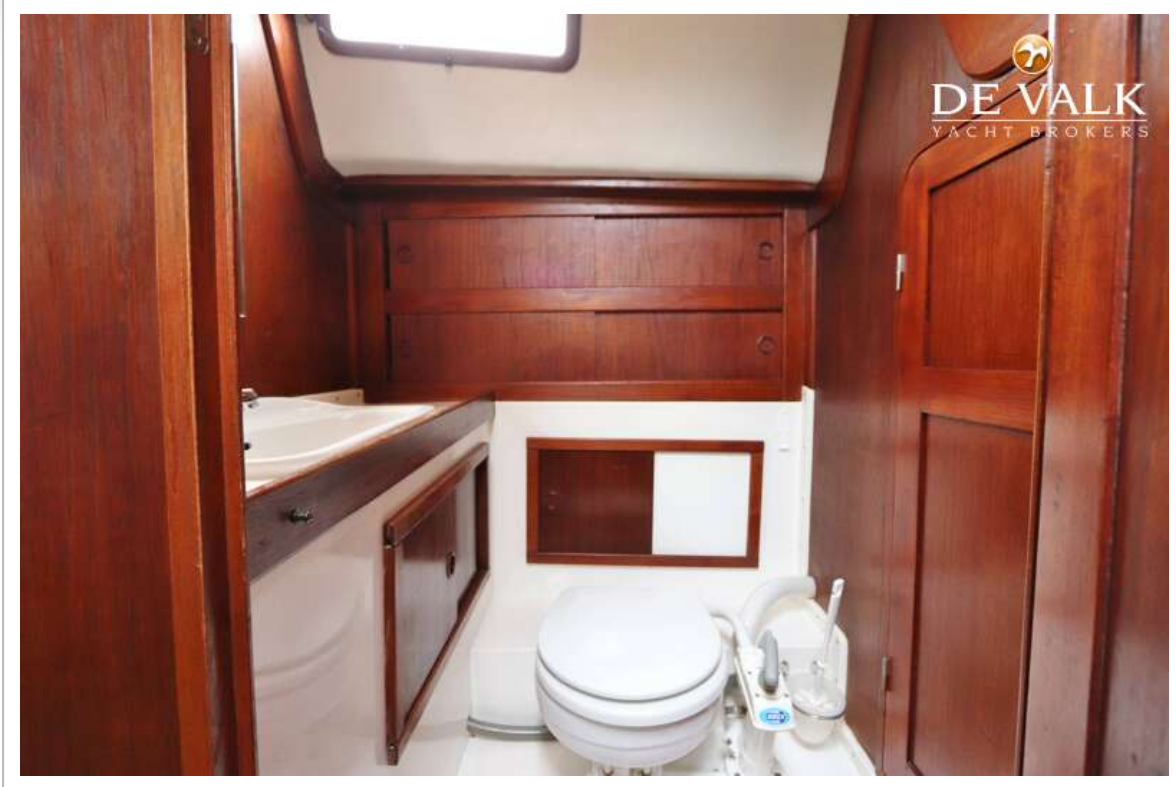
# BOSTROM 37



# BOSTROM 37



# BOSTROM 37





# BOSTROM 37



# BOSTROM 37

