



DE VALK
YACHT BROKERS



GRAND SOLEIL 50



DE VALK
YACHT BROKERS

GRAND SOLEIL 50

BROKER'S COMMENTS

This Doug Petersen designed Grand Soleil 50 is well known for her classic look and nice lines. 'Jean Rode' is a very well maintained Grand Soleil 50. teakdeck, new laminate mainsail and Genoa I, recently renewed upholstery, B & G equipment from 2017.

Jan-Ward van Dantzig

SPECIFICATIONS

Dimensions	14.93 x 4.30 x 2.30 (m)	Builder	Cantiere del Pardo
Built	1996	Cabins	3
Material	GRP	Berths	6
Engine(s)	1 x Yanmar 4JG2TE diesel	Hp/Kw	75.00 (hp), 55.20 (kw)
Asking price	sold (VAT)	Lying	elsewhere / Not at sales office

CONTACT

Sales office	De Valk Sint Annaland B.V.	Telephone	+31 (0)166 601 000
Address	Koelhuisweg 4 4697 RM Sint Annaland NL	E-mail	sintannaland@devalk.nl

DISCLAIMER

These particulars are given in good faith as supplied but cannot be guaranteed.



GENERAL

Model	GRAND SOLEIL 50
Type	sailing yacht
LOA (m)	14,93
LWL (m)	12,26
Beam (m)	4,30
Draft (m)	2,30
Air draft (m)	21,00
Headroom (m)	1,89
Year built	1996
Builder	Cantiere del Pardo
Country	Italy
Designer	Doug Peterson
Displacement (t)	14,3
Ballast (tonnes)	4,3
CE norm	NA
Hull material	GRP
Hull colour	blue Flag Blue ALW Grip painted (original Blue Gelcoat hull)
Hull shape	round-bilged
Keel type	fin keel
Superstructure material	GRP
Rubbing strake	aluminum
Deck material	GRP
Deck finish	teak Renovated in 2022
Superstructure deck finish	teak Renovated in 2022
Cockpit deck finish	teak Renovated in 2022
Antifouling (year)	2023
Dorades	4x Stainless steel Vetus (new 2022) with a SS protection bracket
Window frame	aluminium
Window material	polycarbonate
Deckhatch	5 x Giot, above sail-storage renewed in 2023



Portholes	aluminium Giot
Fuel tank (litre)	stainless steel 330
Level indicator (fuel tank)	Doesn't function correct
Freshwater tank (litre)	stainless steel 700 (in 6 tanks) - cleaned in 2022
Level indicator (freshwater)	New sensors installed, but not connected yet
Blackwater tank (litre)	polyethylene 2x 20 (front tank completely cleaned & re-installed - June 2023)
Blackwater tank extraction	deck extraction + uw line 2 x
Wheel steering	cable steering Double spoke stainless steel Solimar wheel, leather covered
Emergency tiller	yes
More info on hull	The underwater hull has been protected with an epoxy system
Extra info	Stainless steel plate on bow overhauled & re-installed in 2022
Extra info	Lower rudder bearing needs to be replaced
Extra info	Blue steering wheel cover

ACCOMMODATION

Cabins	3
Berths	6
Interior	mahogany
Floor	teak and holly Varnished in 2022
Saloon	yes
Headroom saloon (m)	1,89
Chart table	On starboard side
Aft Cabin	2 x
Dinette	yes
Galley	On starboard side. Watertap renewed in June 2023
Countertop	wood Mahogany
Sink	stainless steel 2 x
Cooker	calor gas 2 burner ENO (new in 2022)
Oven	ENO (new in 2022)
Fridge	XL top-loader with compressor & sliding baskets & gasspring



Freezer	Small freezer compartment in the fridge
Hot water system	220V + engine 20 liter boiler (new in 2019)
Water pressure system	electrical
Owners cabin	double bed In front cabin (headroom : 1,88 m)
Bed length (m)	1,97 x ,80 m
Wardrobe	hanging and shelves
Bathroom	en suite (headroom : 1,85 m)
Toilet	en suite
Toilet system	manual Jabsco (new toilet and new hoses - June 2023)
Wash basin	in the bathroom New watertap (2022)
Shower	en suite Electric shower drain water pump needs to be checked/renewed
Guest cabin 1	twin single Starboard aft cabin (Headroom : 1,82 - 1,97 m)
Bed length (m)	1,97 x 1,00 & 1,97 x 0,80
Wardrobe	hanging and shelves
Bathroom	shared (headroom : 1,84 - 1,87 m)
Toilet	shared
Toilet system	manual Jabsco (new toilet pump - June 2023)
Wash basin	in the bathroom
Shower	separate Electric shower water drain pump (new 2022 - headroom : 1,78 m)
Guest cabin 2	double bed Port Side aft cabin (Headroom : 1,82 - 1,97 m)
Bed length (m)	1,97 x 1,40
Wardrobe	hanging and shelves
Extra info	LED Night lights in the boat, just above the floor (new in 2023)
Extra info	LED lights in ceiling

MACHINERY

No of engines	1
Make	Yanmar
Type	4JG2TE
HP	75



GRAND SOLEIL 50

kW	55.20
Fuel	diesel
Year installed	1996
Maximum speed (kn)	9,5
Cruising speed (kn)	8,5
Consumption (l/hr)	3,5
Engine hours	2100
Engine cooling system	freshwater heat exchanger
Drive	shaft
Shaft seal	Volvo Seal
Engine controls	bowden cable (new cables and controle handle in 2021)
Gearbox	hydraulic
Bowthruster	electric SidePower (overhauled in 2022) with wire-less remote control
Exhaust	watercooled
Propeller type	folding Flox-O-Fold (new in 2013)
Propeller blades	3
Propeller shaft material	stainless steel
Shaft lubrication	water
Manual bilge pump	1 x
Electric bilge pump	2 x
Electrical installation	12 and 220 Volt
Start battery	1 x 110 AH (new in 2017)
Service battery	4 x 75 Ah Varta (2017 - poor condition, so need to be replaced)
Bowthruster battery	1 x 92 Ah & 1 x 105 Ah (both new in 2017)
Battery monitor	yes
Battery charger	yes
Diode battery combiners	yes
Shorepower	with cable
Extra info	Yanmar RPM counter renewed in 2022
Extra info	Engine has been serviced in May 2023
Extra info	Diesel & water tank filler caps renewed in 2022



NAVIGATION

Compass	White Star (op pedestal - with air bubble)
Electric compass	B & G (new in 2017)
Depth sounder/log	B & G Triton (new in 2017)
Windset	B & G Triton (new in 2017)
VHF	B & G V50 Mic & a wireless handset in cockpit (both new in 2017)
Autopilot	B & G T2 (new in 2017)
Rudder angle indicator	(via chart plotter)
Radar/GPS/plotter	B & G Zeus2 9" (on pedestal - 2017) B & G 3G radar (2017)
Electronic chart(s)	yes
AIS transceiver	Navico NAIS 400 (new in 2017) - not connected at the moment
EPIRB	Mc Murdo SmartFind 406 GPS (functioning unknown)
Navigation lights	LED board lights
Extra info	B & G Zeus2 12" at chart table (2017). broken screen but usable

EQUIPMENT

Sprayhood	Beige (new in 2022) (over the cabin entrance)
Cockpit cover	Beige; 1x large (new in 2022)
Sun awning	Cockpit cover can also be used as a sun awning
Winter cover	yes
Cockpit cushions	2x side seats and 6x loose cushion (all new in 2022)
Bathing platform	Manual, covered with teak
Boarding ladder	stainless steel (removable)
Deck shower	(new in 2022)
Anchor	CQR Plough (new galvanized in 2022)
Anchor chain	50 meter galvanized chain (new in 2022)
Windlass	electrical Lofrans - 1500 W
Sea railing	stainless steel
Grab rail (superstructure)	wood Teak
Railing side opening gates	1x on starboard side



Pushpit	Stainless steel
Pulpit	Stainless steel
Life raft (pers)	container 6 - Plastimo Cruiser 6 ORC (new in 2021)
Lifebuoy	2 x white - Baltic
Safety lines on deck	yes
Horn	electric (in the mast)
Radar reflector	yes
Fenders	yes
Mooring lines	yes
Radio-cd player	yes
Surround Sound System	Fusion
Cockpit speakers	2 x
Speakers in salon	2 x
Clock - barometer	yes
Fire extinguisher	4x (new in 2022)
Extinguisher in engine room	FKO Fire Knock Out (new in 2023)
Extra info	2x Beige sun deck cushion (between cockpit&entrance-new in 2022)
Extra info	The cockpit cover/sun awning is zipped onto the Lazy-Bag
Extra info	2x Folding stainless steel mast step (new in 2022)

RIGGING

Rigging	fractional with backstays Jack stays replace by Dyneema (new in 2023)
Standing rigging	Dyform 3x stainless steel protection tube over tentioner (new in 2022)
Brand mast	Sparcraft
Material mast	aluminium
Spreaders	3 sets of spreaders
Keel stepped mast	(mast has a cover under deck)
Mainsail cover	Beige Ullman Sails Lazy-Bag with Lazy Jacks (all new in 2022)
Battcars	yes



Fully battened mainsail	Ullman Sails: Endurance Offshore Laminate & grey Taffetta (2022)
Cutterstay	Connections present, stay is not available
Genoa I	Ullman Sails: Endurance Offshore Laminate & grey Taffetta (2022)
Genoa furler	yes
Genoa cover	Beige Ullman Sails (new in 2022)
Gennaker	Hannibal Sailmakers
Spinnaker	Hannibal Sailmakers
Removable innerforestay	yes
Reefing System	slabreefing
Backstay adjuster	mechanical Harken
Boomvang	gasspring (boomvang needs to be replaced)
Primary sheet winch	2 x Lewmar 44 ST (stainless steel) - main sheet
Genoa sheetwinches	2 x Lewmar 66 ST (stainless steel)
Halyard winches	2 x Lewmar 48 ST (stainless steel)
Spinnaker winch	2 x Lewmar 54 ST (stainless steel)
Reefing winch	1 x Lewmar 30 ST (stainless steel)
Spi-pole	aluminium
Gennaker pole	stainless steel Fixed on the bow (re-installed in 2022)
Extra info	Harken main and genua travellers & Blocks



GRAND SOLEIL 50



GRAND SOLEIL 50



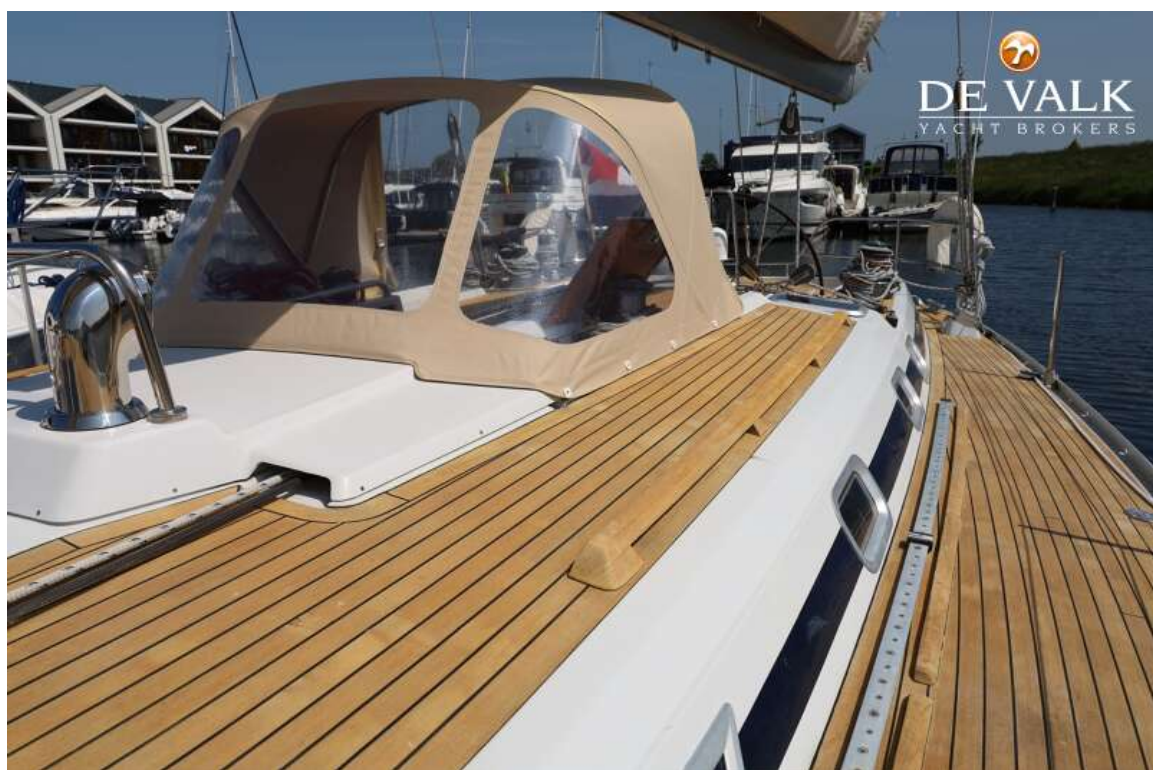
GRAND SOLEIL 50



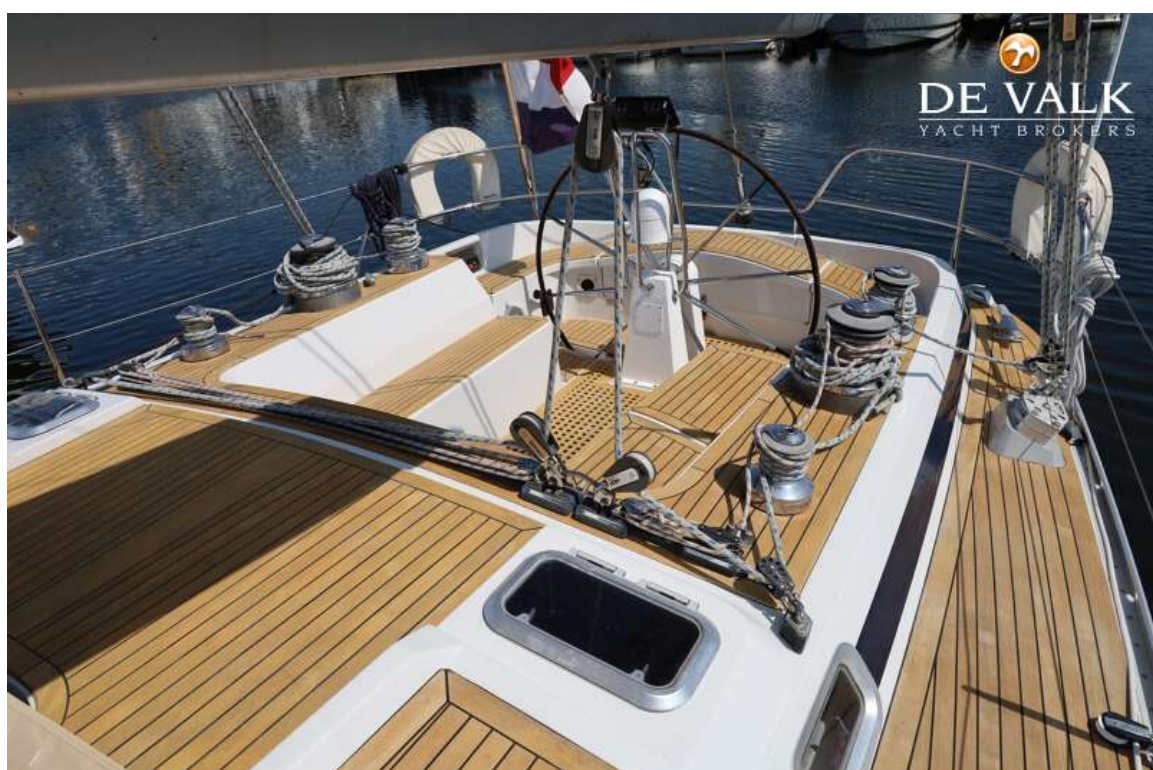
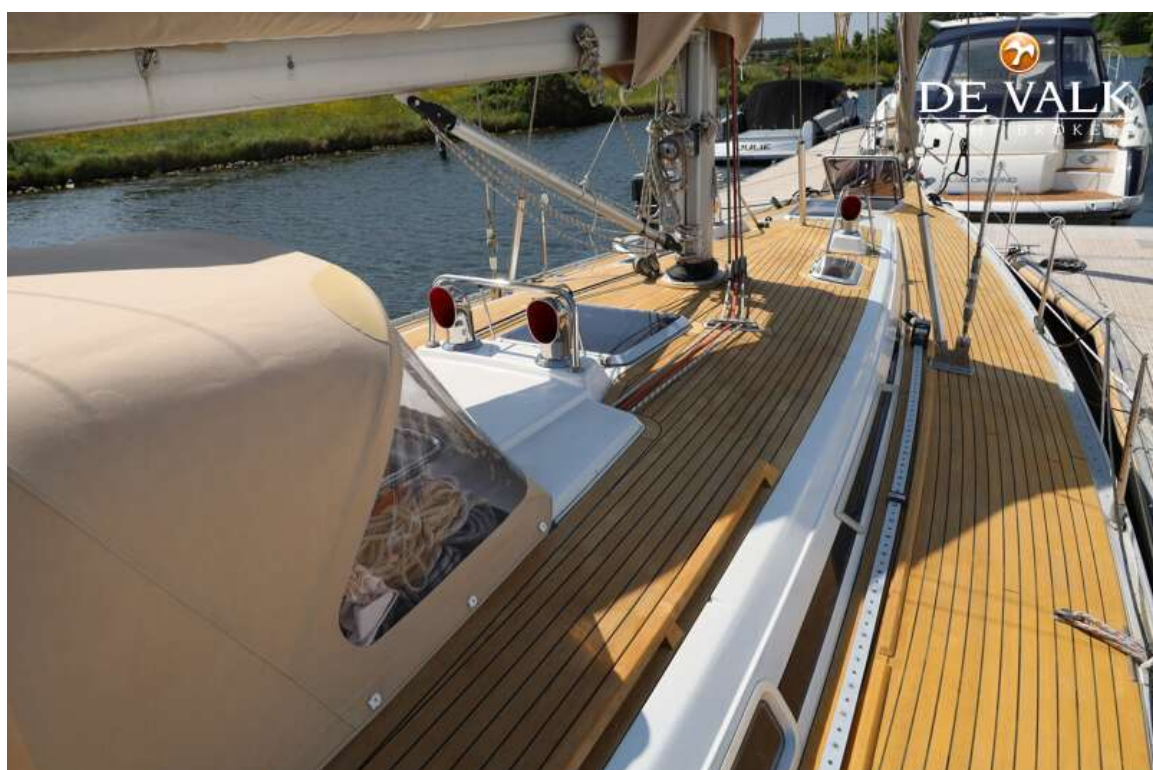
GRAND SOLEIL 50



GRAND SOLEIL 50



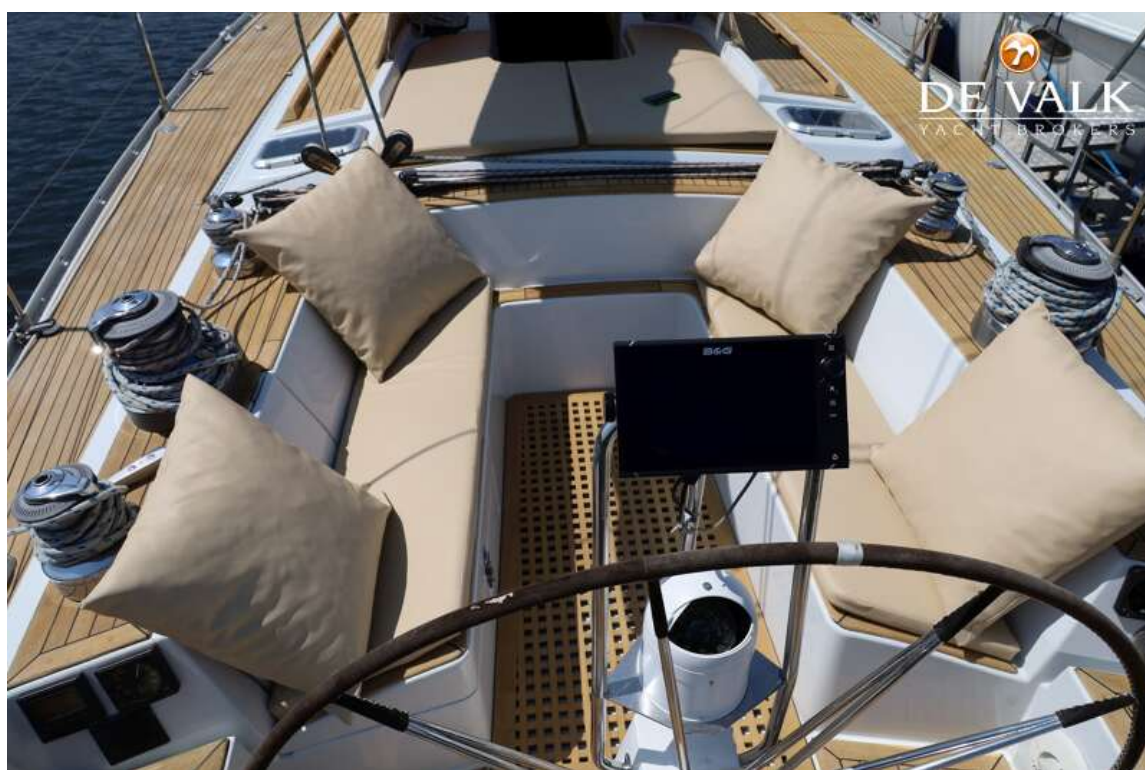
GRAND SOLEIL 50



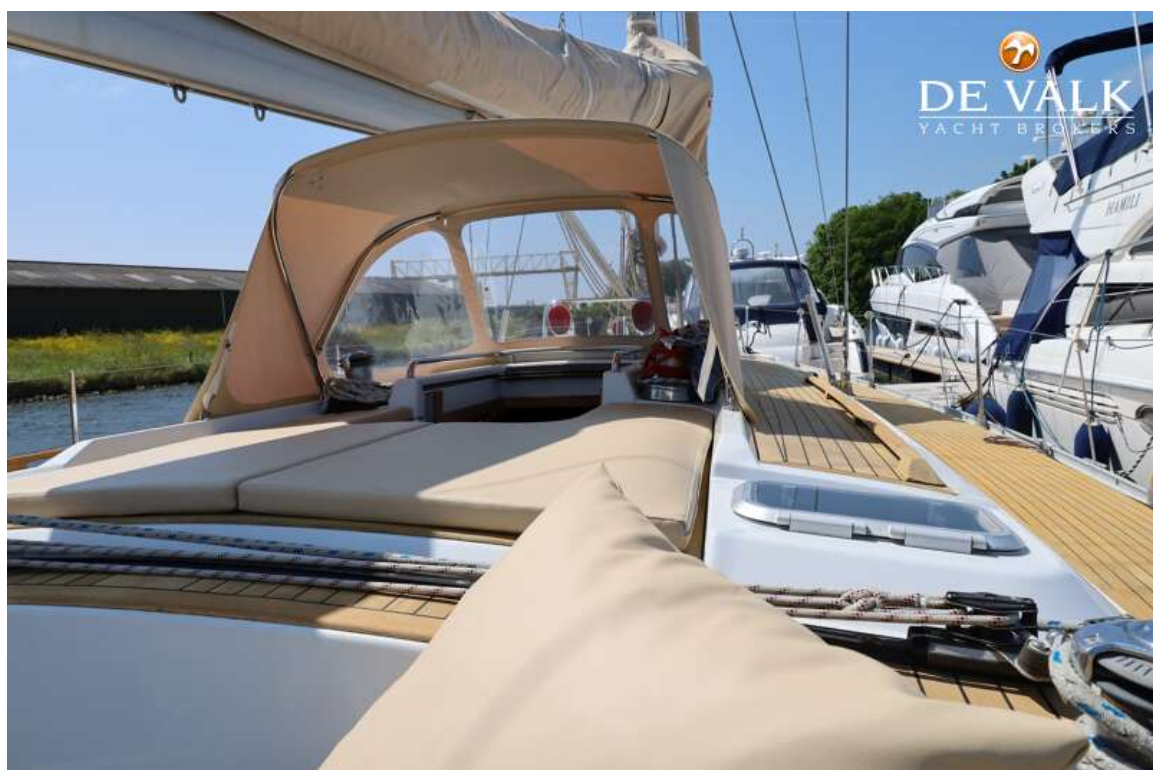
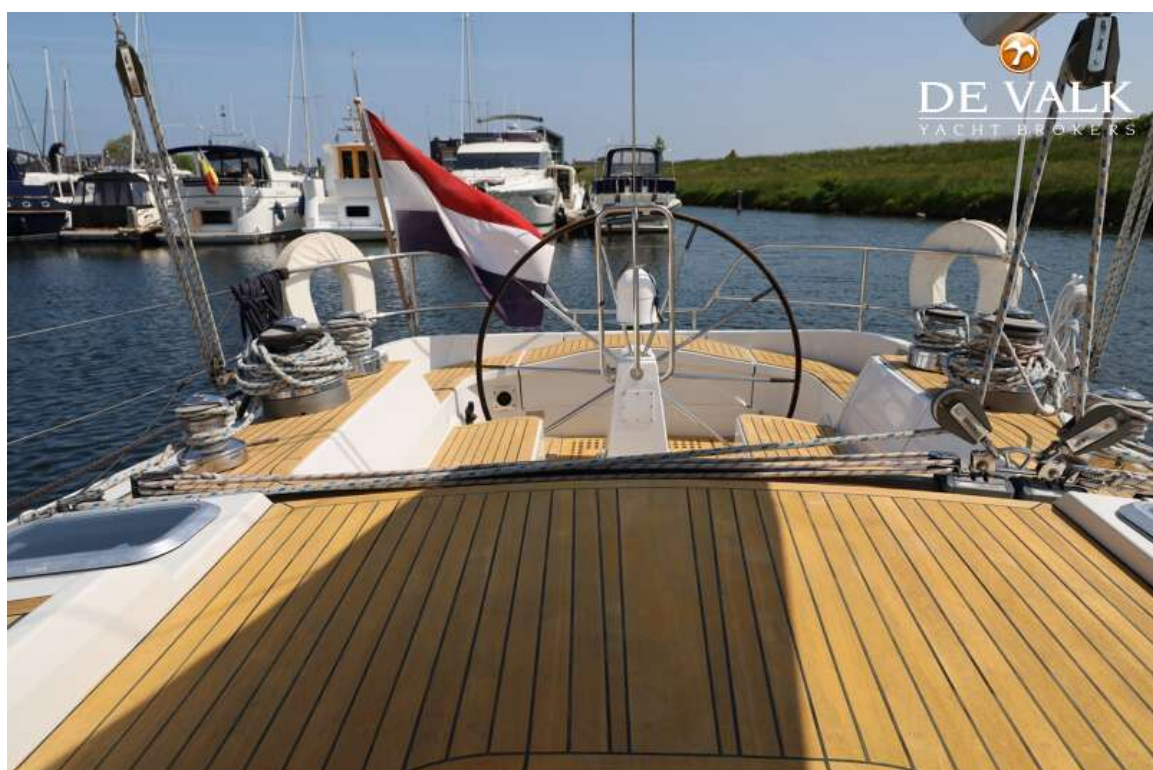
GRAND SOLEIL 50



GRAND SOLEIL 50



GRAND SOLEIL 50



GRAND SOLEIL 50



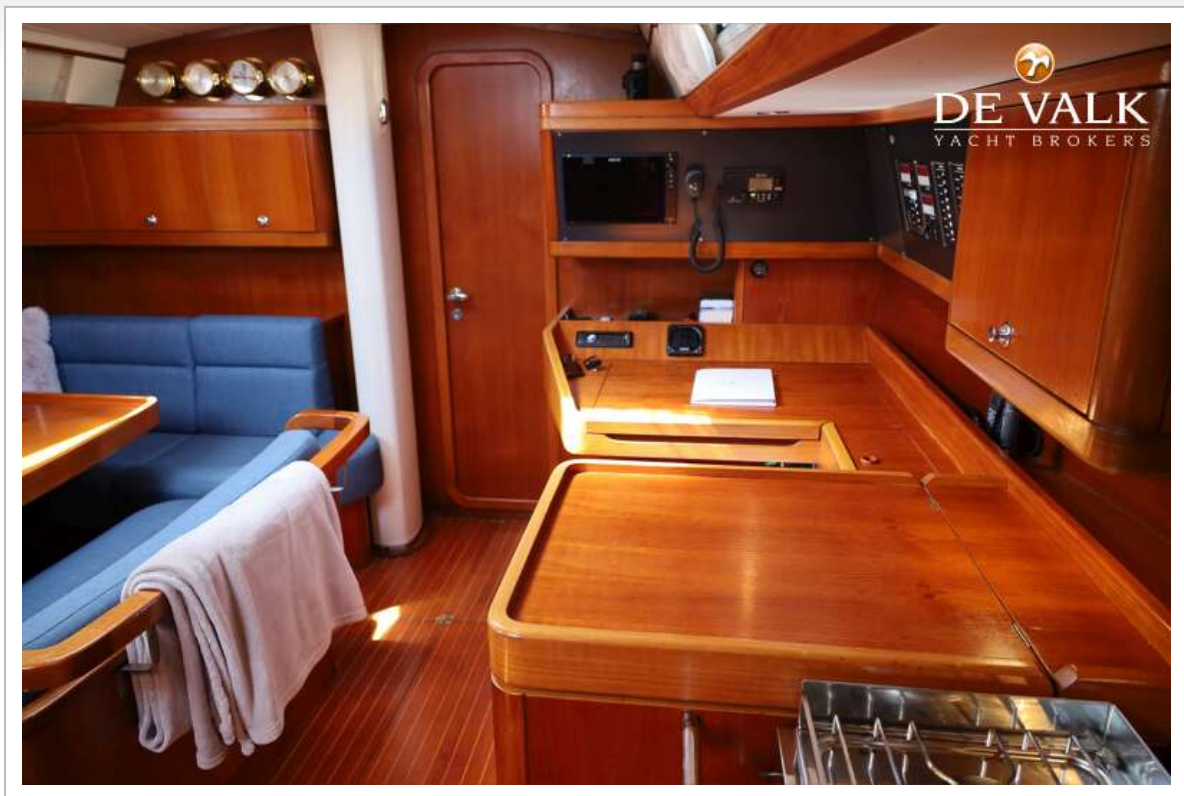
GRAND SOLEIL 50



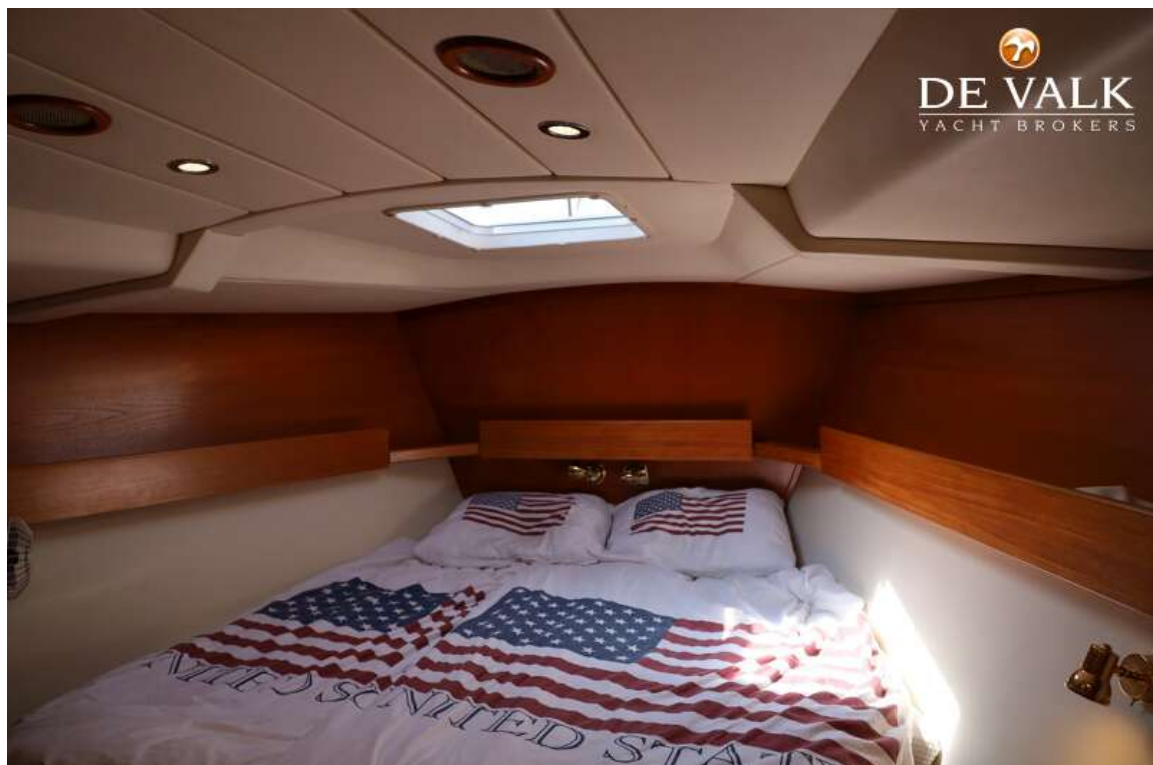
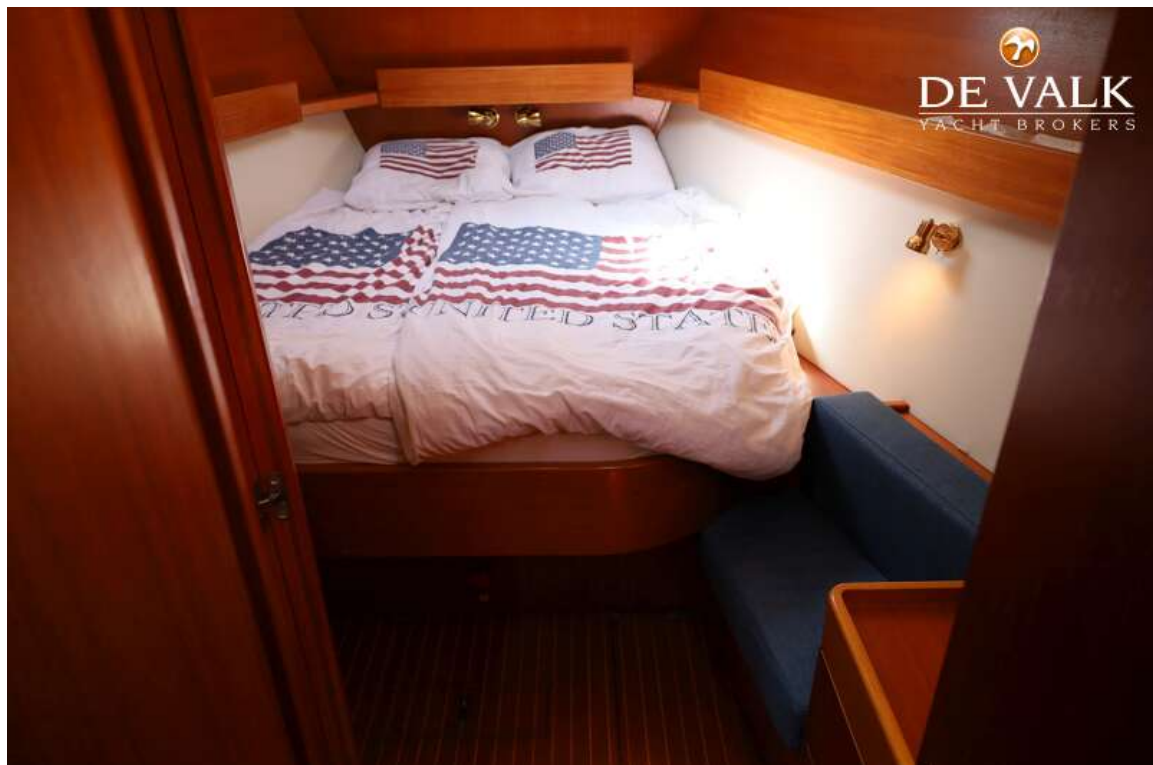
GRAND SOLEIL 50



GRAND SOLEIL 50



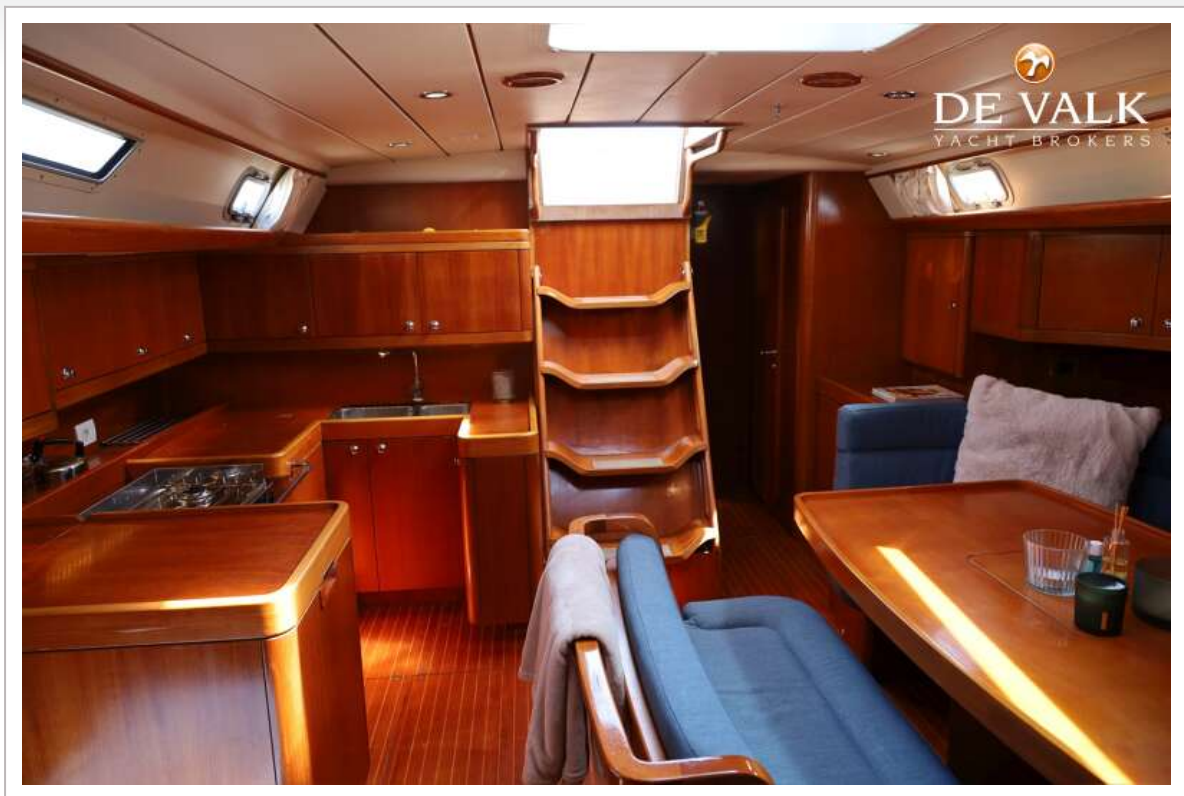
GRAND SOLEIL 50



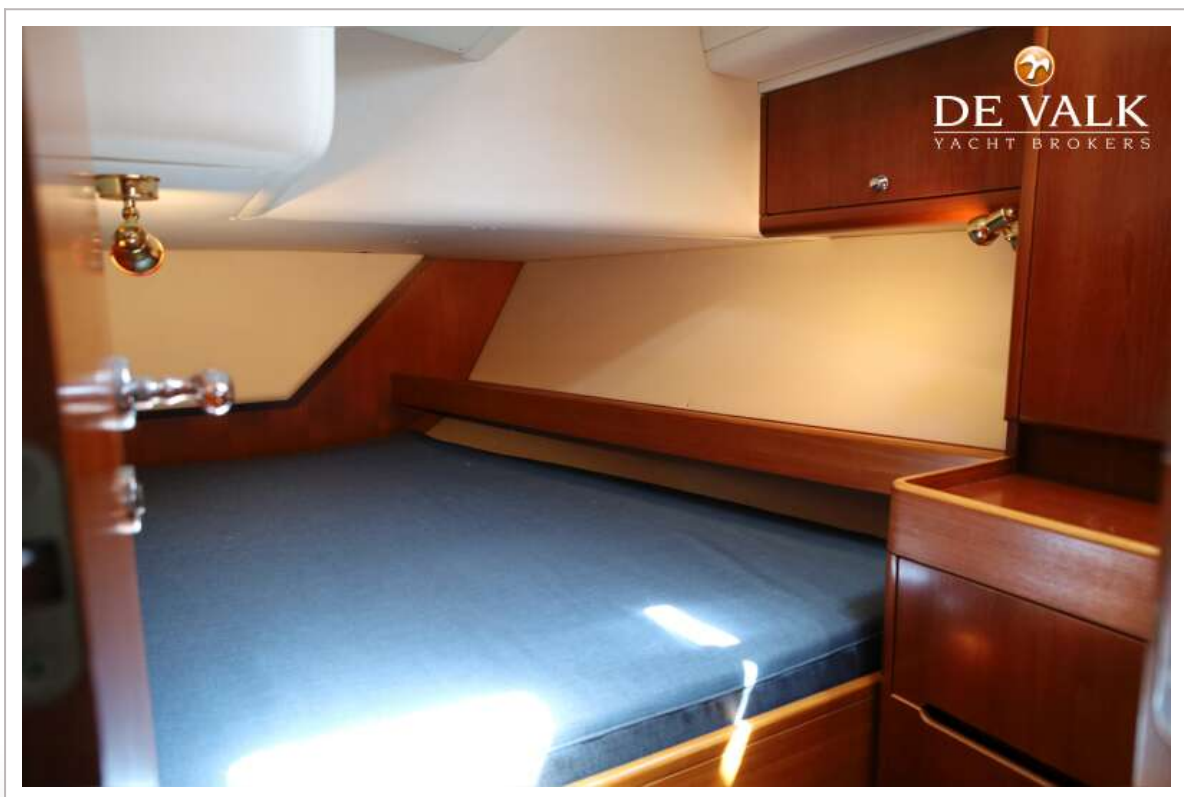
GRAND SOLEIL 50



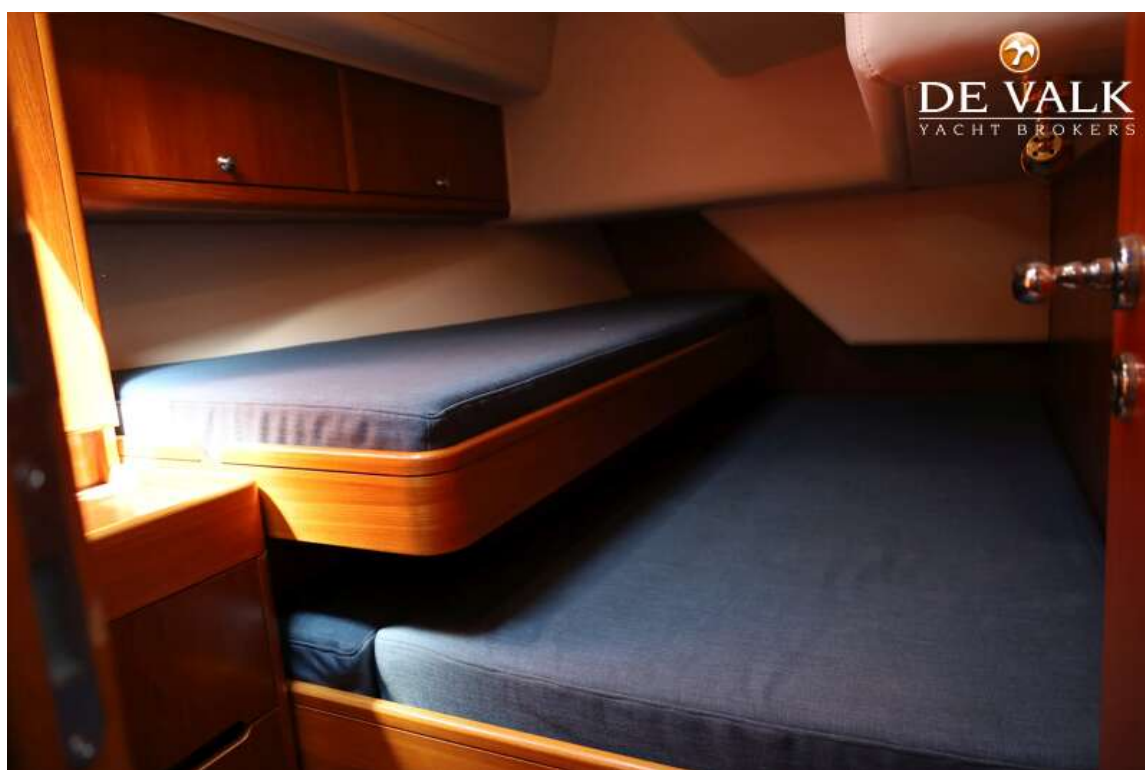
GRAND SOLEIL 50



GRAND SOLEIL 50



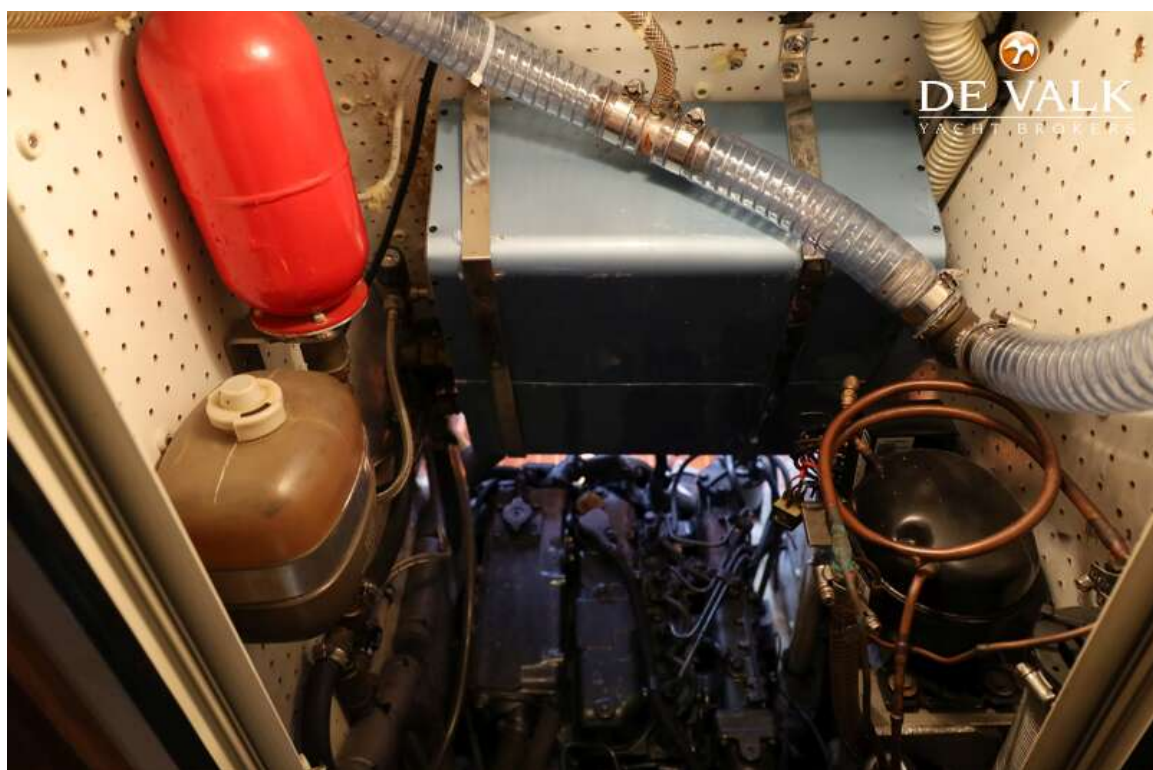
GRAND SOLEIL 50



GRAND SOLEIL 50



GRAND SOLEIL 50



GRAND SOLEIL 50

