



DE VALK
YACHT BROKERS



SCHOONER CLASSIC GAFF



DE VALK
YACHT BROKERS

SCHOONER CLASSIC GAFF

BROKER'S COMMENTS

The magnificent 3 mast schooner "Leao Holandes" that has been an icon on the Tagus river for over 30 years has come on the market. She started life around 1910 as a freighter in North European waters. After an adventurous life which included a circumnavigation in the 80ties she ended in Belgium. There she was bought by her last owner who took her to Portugal for day trips and events. This historical classic Schooner will be an eye catcher and iconic attraction in any City harbour. The heirs have reduced the price sharply to €300k "as is and where is" Bids upwards from €300k will be accepted.

Reinoud Bicker Caarten

SPECIFICATIONS

Dimensions	35.00 x 6.15 x 3.20 (m)	Builder	shipyard Bodewes Martenshoek
Built	1910	Cabins	5
Material	Steel	Berths	11
Engine(s)	1 x Caterpillar D342T diesel	Hp/Kw	235.00 (hp), 172.96 (kw)
Asking price	sold (VAT)	Lying	at sales office

CONTACT

Sales office	De Valk Portugal	Telephone	+351 308 812321
Address	Edifício Administrativo - Ponta da Areia 8500 - 345 Portimão PT	E-mail	portugal@devalk.nl

DISCLAIMER

These particulars are given in good faith as supplied but cannot be guaranteed.



SCHOONER CLASSIC GAFF

GENERAL

Model	SCHOONER CLASSIC GAFF
Type	sailing yacht
LOA (m)	35,00
LWL (m)	28,10
Beam (m)	6,15
Draft (m)	3,20
Air draft (m)	27,00
Headroom (m)	2,30
Year built	1910
Builder	Shipyard Bodewes Martenshoek
Country	The Netherlands
Displacement (t)	47
Ballast (tonnes)	concrete 25
Gross tonnage	102
CE norm	A
Hull material	steel
Hull colour	off-white
Hull thickness (mm)	measurement report available 8.5mm to 5.8mm
Hull shape	S-bilged
Keel type	long keel
Superstructure material	steel
Rubbing strake	steel
Deck material	steel
Deck finish	non-skid paint
Superstructure deck finish	non-skid paint
Cockpit deck finish	non-skid paint
Antifouling (year)	10/2022
Window frame	steel
Window material	tempered glass
Insulation	rockwool Entire hull



SCHOONER CLASSIC GAFF

Fuel tank (litre)	3x steel total 5000L
Level indicator (fuel tank)	yes
Freshwater tank (litre)	1x 3000L 1x 1500L
Blackwater tank (litre)	yes
Greywater tank (litre)	2x 2500L
Wheel steering	mechanical Worm steering system
Outside helm position	yes
Emergency tiller	Emergency cable to steering wheel

ACCOMMODATION

Cabins	5
Berths	11
Crew cabin	1
Crew berths	1
Interior	Pine painted white, doors meranti and mahogany
Floor	wood
Open cockpit	yes
Aft deck	yes
Deck saloon	yes
Pilot house/deck saloon	Deckhouse with chart room and state room
Saloon	including pantry and bar, soundsystem, 4 long tables with 2L shaped and 2 U shaped mahogany sofas. 6 brass ceiling deck lights above tables, seperate men/women toiletrooms 9m x 5,6m
Headroom saloon (m)	2.2m
Chart table	Chartroom with L shaped table with 9 shelves for sea charts, bookshelves, Nav. equipment, direct access to deck and lower passage way.
Galley	seperated bar and pantry
Countertop	stainless steel
Sink	stainless steel Double
Oven	1 catering oven



SCHOONER CLASSIC GAFF

Fridge	3x for beverages in Pantry, and 1x Bar
Freezer	1x in Bar
Wine cooler	Heineken beer cooling system with tap
Hot water system	Ignis boiler 150L, 1500W on 220V
Water pressure system	In all cabins with footpumps or jet pump
Manual and/or foot pump	Both
Dishwasher	yes
Kettle	yes
Hot water tap	yes
Ice maker	yes
Coffee maker	yes
Crockery	yes
Owners cabin	Double bed stateroom with L shaped sofa and pinewood table
Bed length (m)	2m x 1.6m
Wardrobe	drawers and shelves
Bathroom	With separate bathtub and shower
Toilet	separate
Toilet system	manual
Wash basin	at the toilet
Guest cabin 1	4 double cabins, 2 with ensuite bathroom
Bed length (m)	All cabins with bunkbeds, 2m x 0.7m
Wardrobe	drawers and shelves
Bathroom	2x ensuite with shower, toilet, washbasin
Toilet	shared
Toilet system	manual
Wash basin	in the bathroom
Shower	shared
Crew cabin(s)	boson storage and 1 bunkbed in bow, separated by steel bulkhead, 2,8m x 3,8m
Extra info	Siemens smoke detection system with 10 detectors throughout the ship



MACHINERY

No of engines	1
Make	Caterpillar
Type	D342T
HP	235
kW	172.96
Fuel	diesel
Year installed	1980
Maximum speed (kn)	8
Cruising speed (kn)	6,5
Consumption (l/hr)	22
Range (nm)	1350
Engine cooling system	closed keelcooling Grid cooling
Drive	shaft
Shaft seal	yes
Engine controls	bowden cable
Gearbox	Reveres gear twin disc
Secondary engine	diesel Ruggerini 3 cyl. 30HP
Propeller type	fixed Bronze3
Propeller blades	3
Propeller shaft material	stainless steel
Shaft lubrication	water
Electric bilge pump	coupled to main engine
Electrical installation	24v/220v
Generator	dry exhaust Batn type Euro safety Ltd coupled to 2nd engine
Generator 2	MAC-DEK 5000 4,5Kw
Batteries	Gel solar 4x Kaise 12Vx250Ah
Start battery	1x 70Ah for auxiliary engine
Service battery	1x 55Amp/hr
Navigation Battery	Gel Solar
Battery monitor	yes



SCHOONER CLASSIC GAFF

Battery charger	Delco Remy on main engine
Battery charger/inverter	yes
Shorepower	yes
Insulation transformer	220V to 24V on generator or shore power

NAVIGATION

Compass	Antique magnetic compass on pedestal.
Multi control display	yes
Depth sounder	Seafarer 24V
Windset	yes
VHF	Professional Marine VHF, 12V/25W all channels
Radar	Anritsu marine (1981) type AR S02RC
GPS	AP navigator Philips MK111 F305, Wolkers SatNav 560
Navtex	yes
PC connection	yes
Electronic chart(s)	yes
AIS receiver	yes
EPIRB	yes
Navigation lights	25W with Red over Green and Red over Red option

EQUIPMENT

Window cover	yes
Cockpit table	yes
Cockpit chairs	Benches
Boarding ladder	wood
Gangway	Aluminium ramp
Deck shower	yes
Anchor	225KG Patent anchor Portside
Anchor chain	120m 20mm galvanized steel
Anchor 2	225KG Patent anchor Starboardside
Anchor chain	80m 20mm galvanized steel



SCHOONER CLASSIC GAFF

Windlass	manual
Dinghy	rigid inflatable 4,5m 6 pax
Outboard	Yamaha 40HP
Sea railing	steel
Life raft	container RFD type SURVIVA MKIV 2x Ausmar SA
Life raft (pers)	1x 25 2x 30pax
Last life raft survey	2019
Lifejackets	100 in boxes on deck
Lifebuoy	4x with 2x M.O.B. light
Danbuoy	Beacon buoy
Horn	yes
Fenders	C.a.n 10x
Mooring lines	yes
Spare parts	yes
Tools	yes
Satellite	Wolkers Sat Nav 560
Radio-cd player	yes
Fire extinguisher	4x 4kg BCTgas, 2x12kg
Extinguisher in engine room	1xCO2 and 1xCO2 in Pantry
Extra info	Firefighting pump 7200L/hr with 20m hose

RIGGING

Rigging	schooner 3 steel masts with steel top masts, aluminium gaffs, wooden boom
Brand mast	Wire by Staalkabel BV Amsterdam, galvanized steel 19mm and 24mm
Material mast	Steel
Mainsail	from 2005, Dracon 550gr/m by O Lee HK, Main 80m2, mizzen 90m2, schooner 80m2
Mainsail cover	Hoods on all main sails
Main staysail	240gr/m2 from 1987, 20m2 top staysail
Topsail	300gr/m from 1987, main 35m2, mizzen 25m2, schooner 30m2

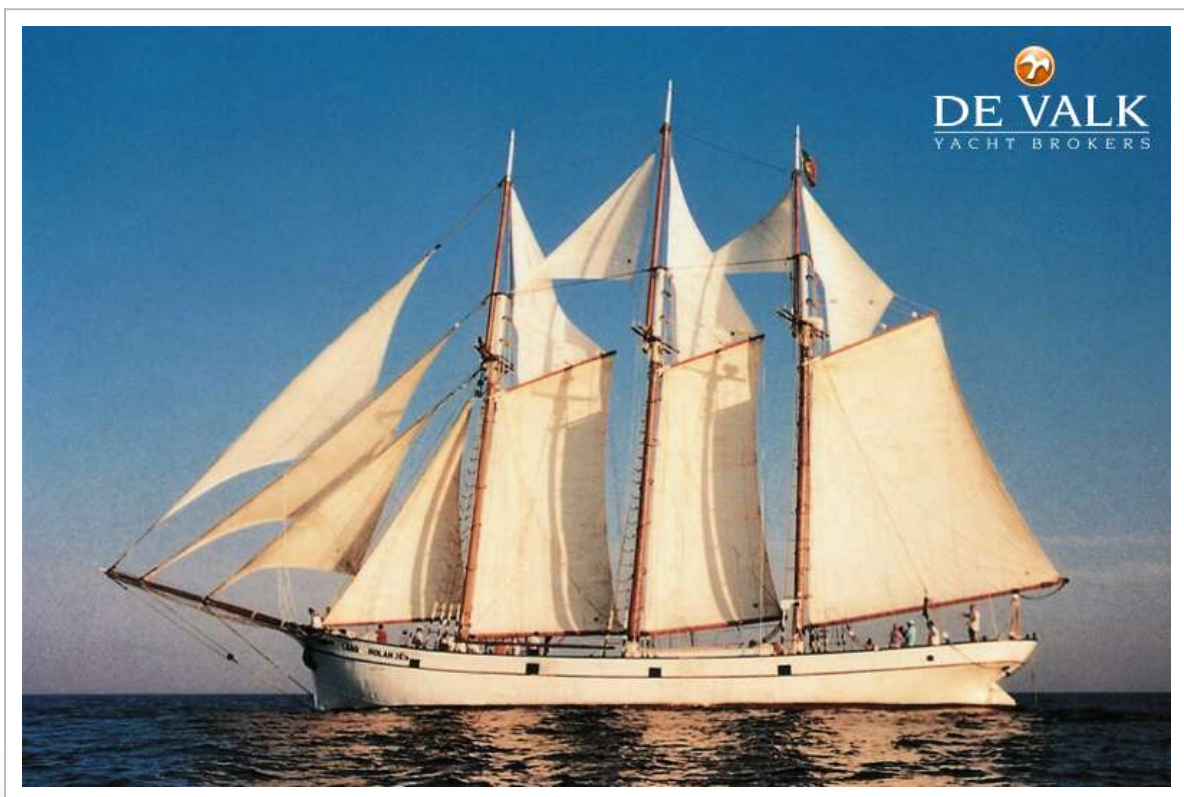


SCHOONER CLASSIC GAFF

Mizzen staysail	240gr/m from 1987 10m2 top stay sail
Jib	550gr/m from 2014, 35m2
Jib I	550gr/m from 2015 inner jib 35m2
Jib II	550gr/m from 2005 outer jib 50m2
Jib III	550gr/m from 2005 flying jib 50m2
Reefing System	slabreefing



SCHOONER CLASSIC GAFF



SCHOONER CLASSIC GAFF



SCHOONER CLASSIC GAFF



SCHOONER CLASSIC GAFF



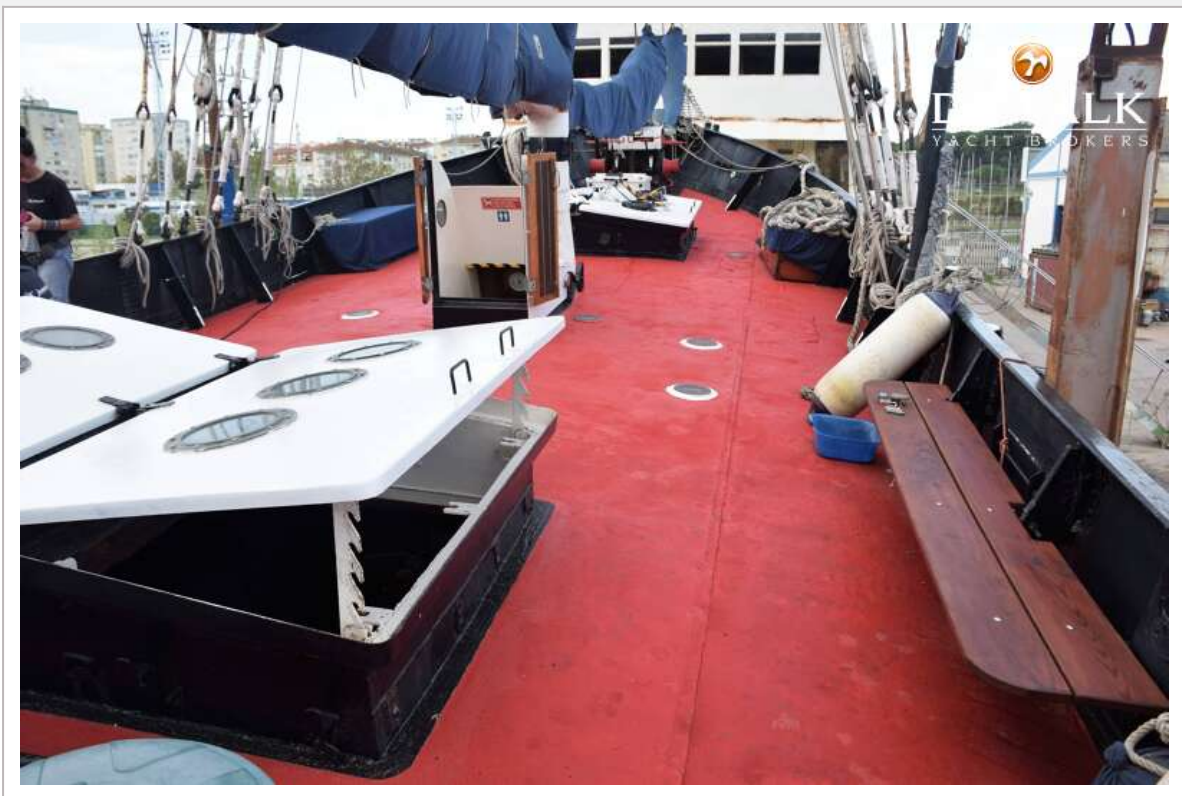
SCHOONER CLASSIC GAFF



SCHOONER CLASSIC GAFF



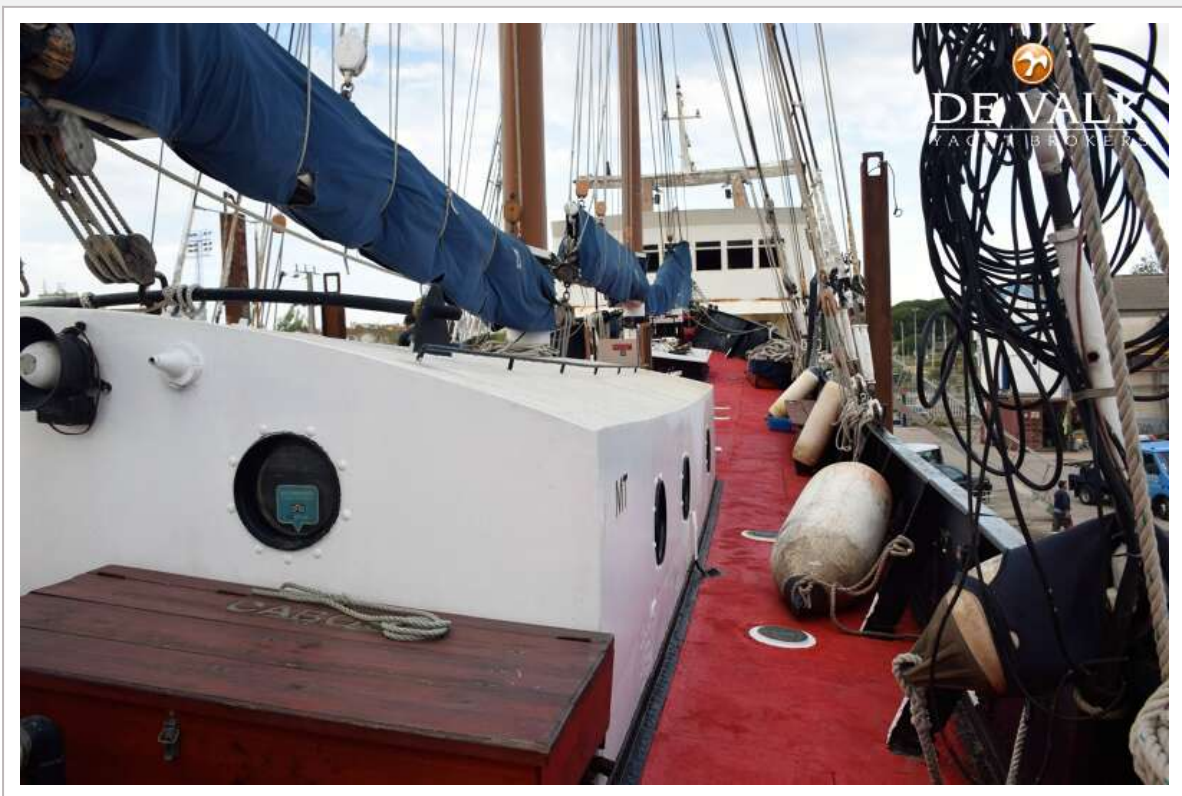
SCHOONER CLASSIC GAFF



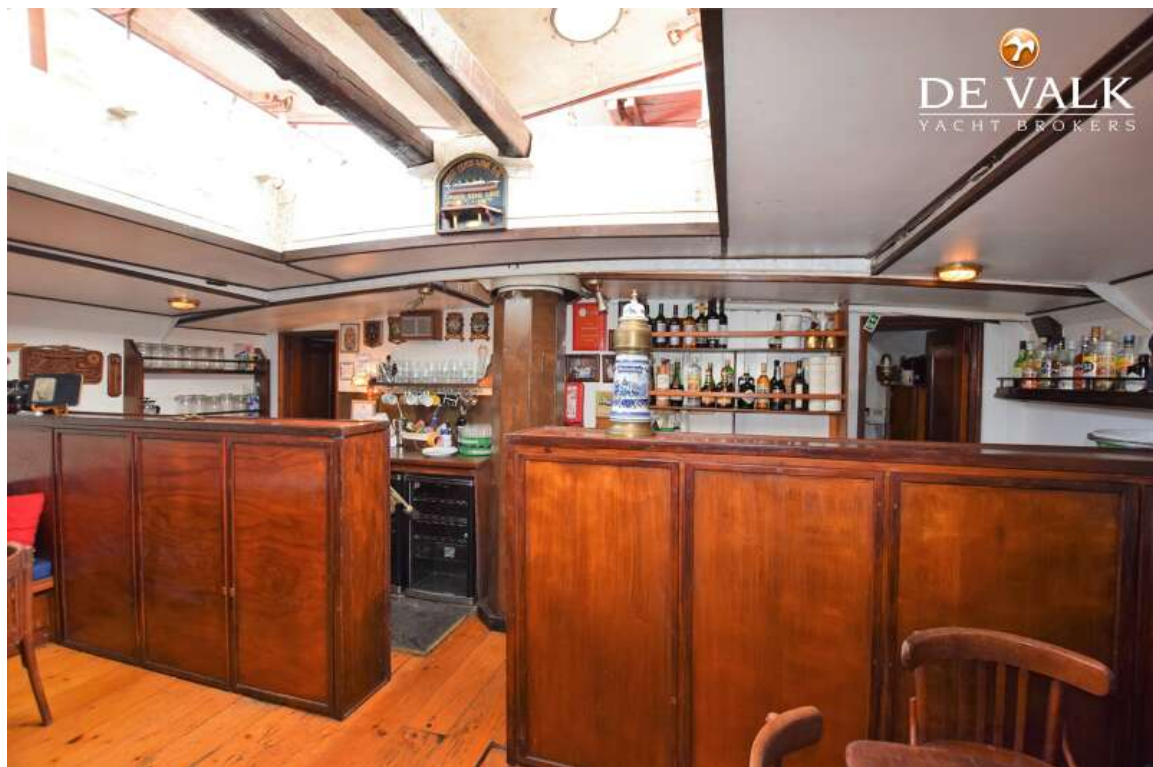
SCHOONER CLASSIC GAFF



SCHOONER CLASSIC GAFF



SCHOONER CLASSIC GAFF



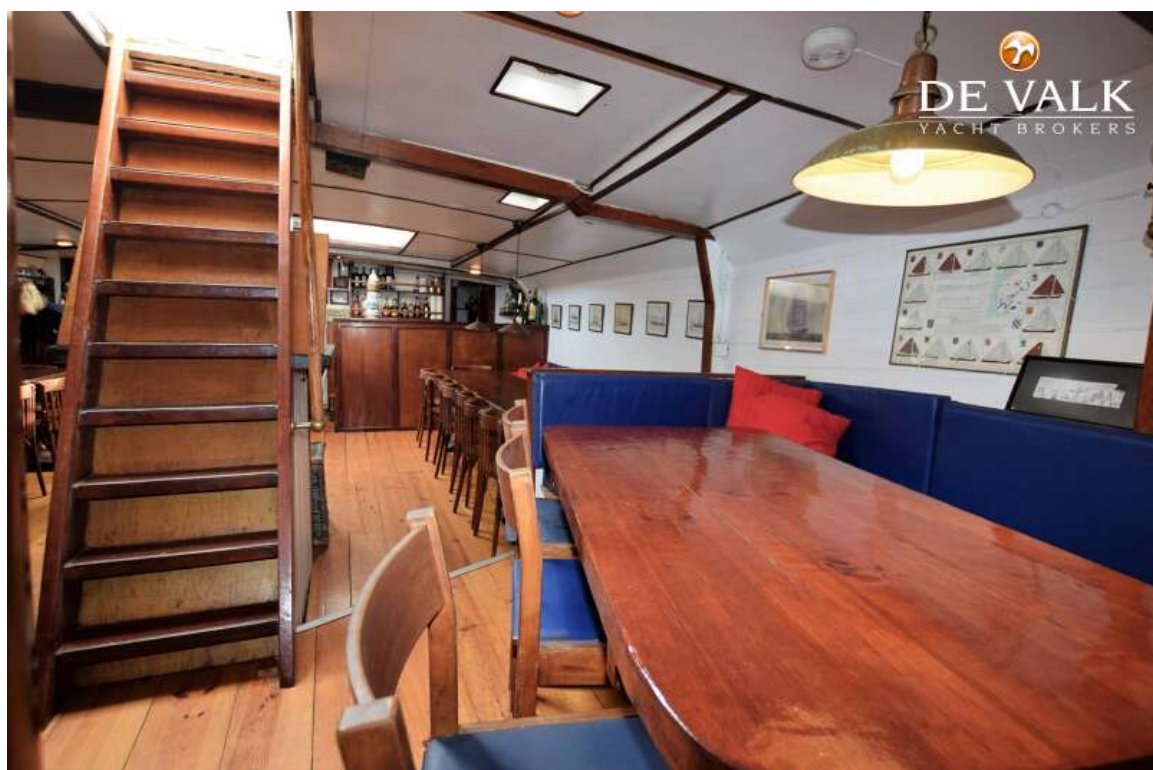
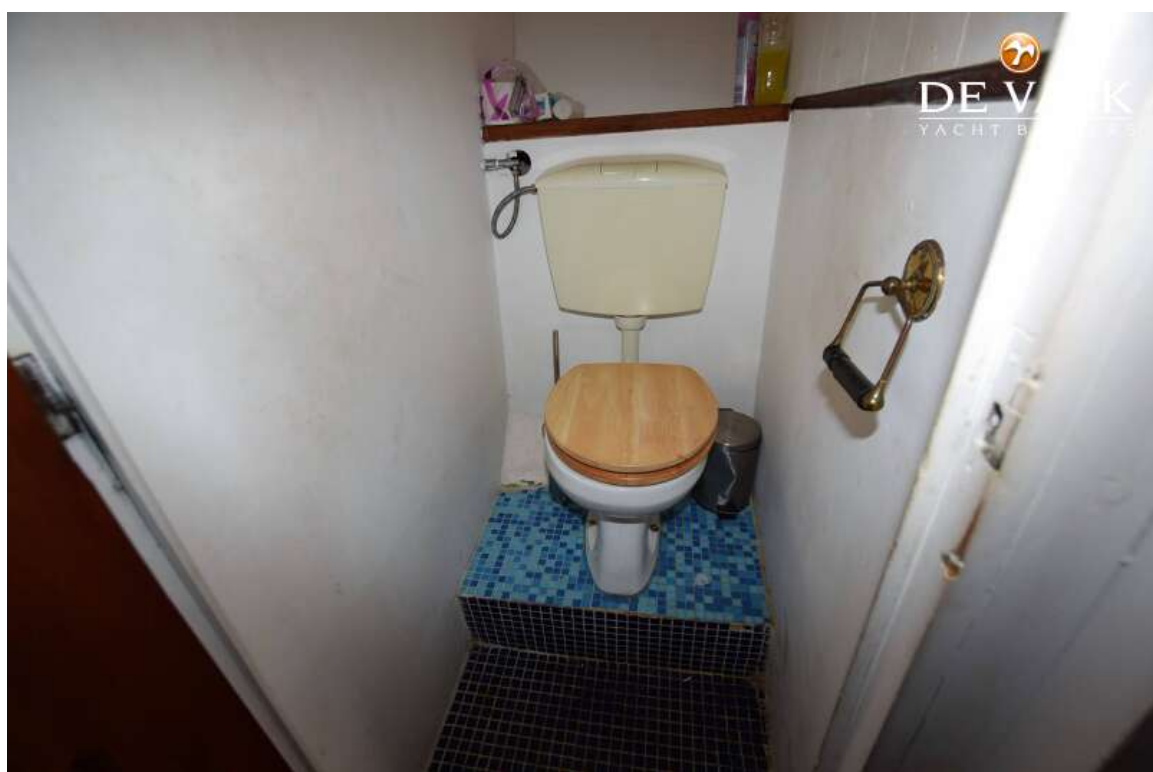
SCHOONER CLASSIC GAFF



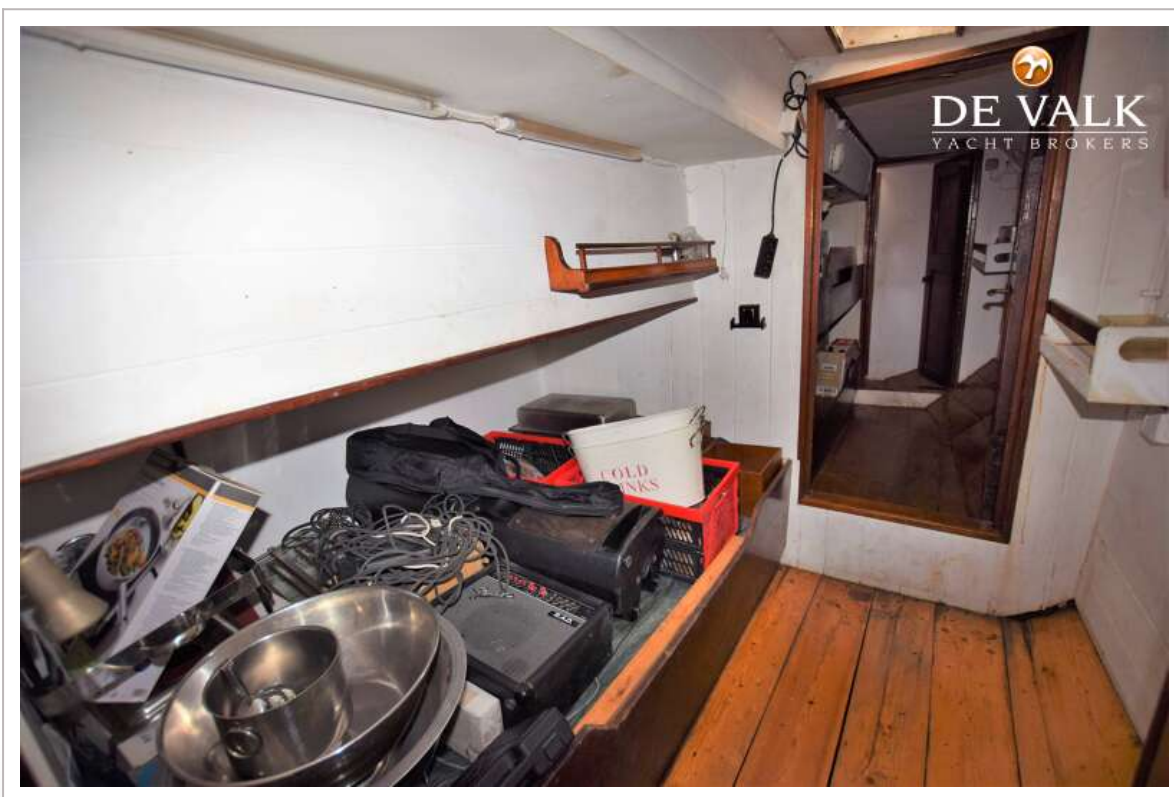
SCHOONER CLASSIC GAFF



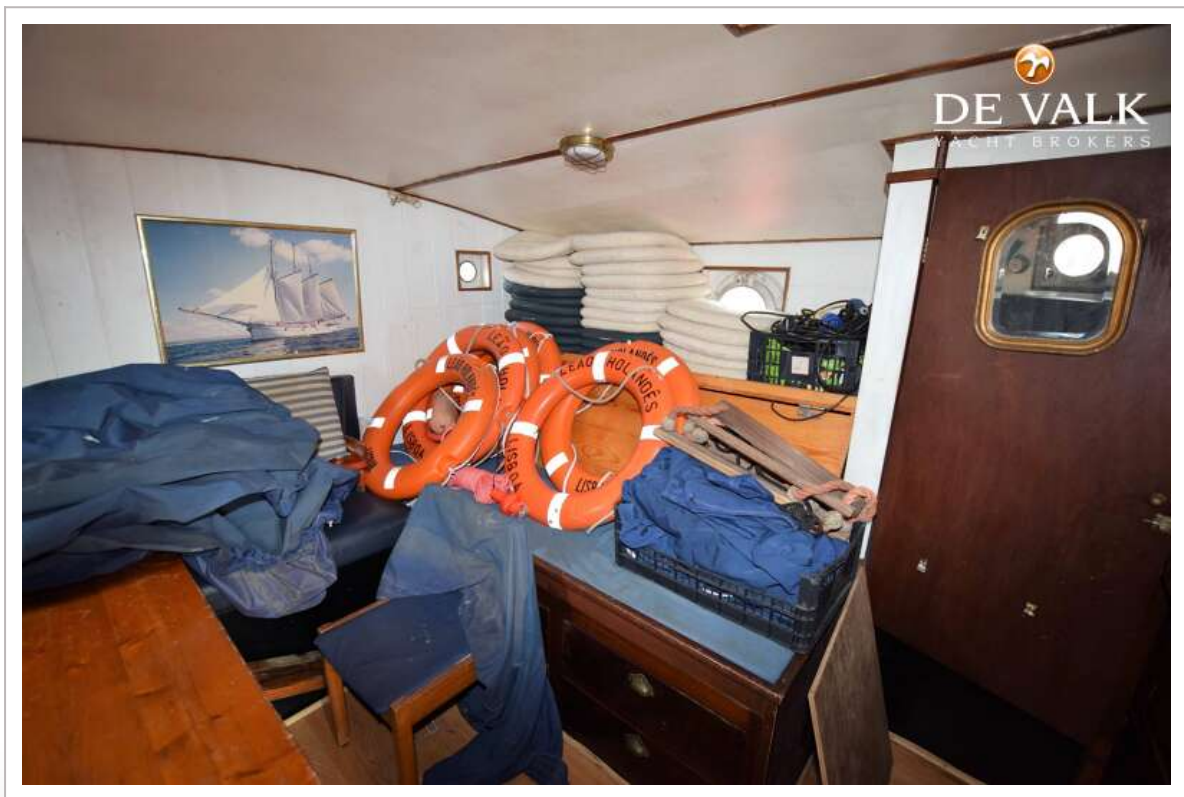
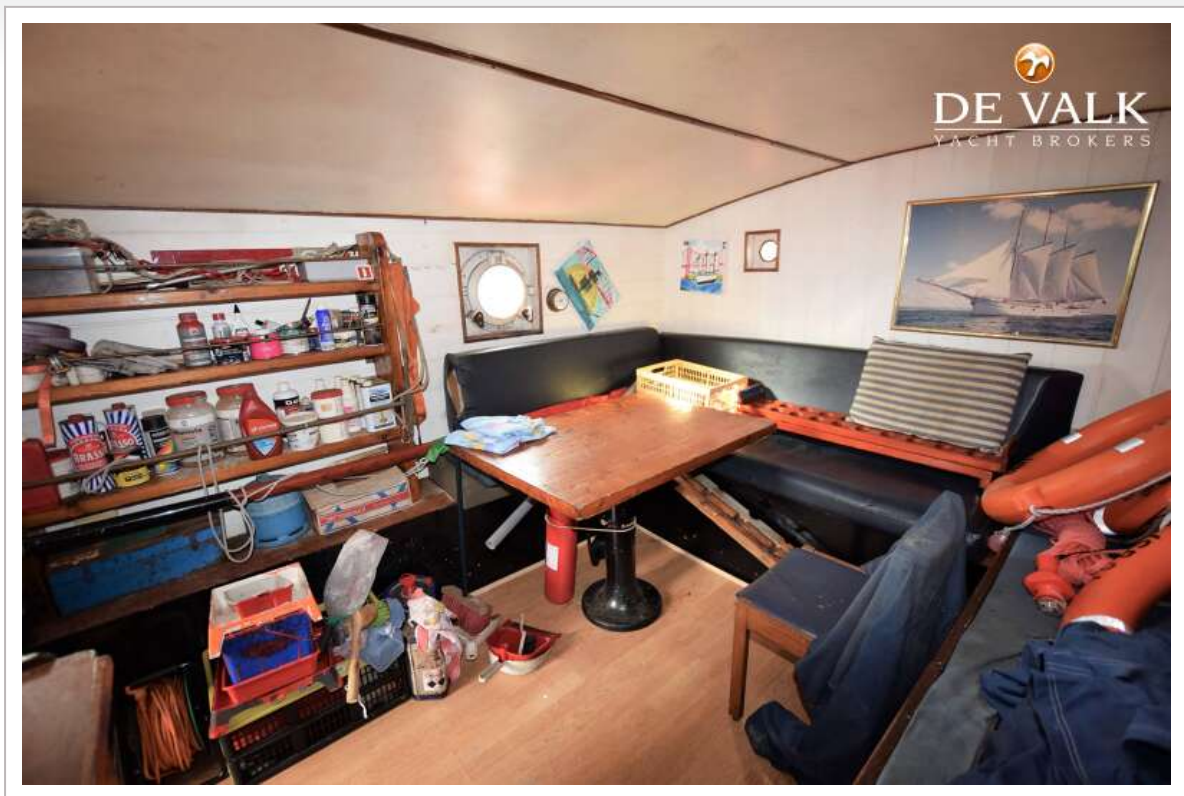
SCHOONER CLASSIC GAFF



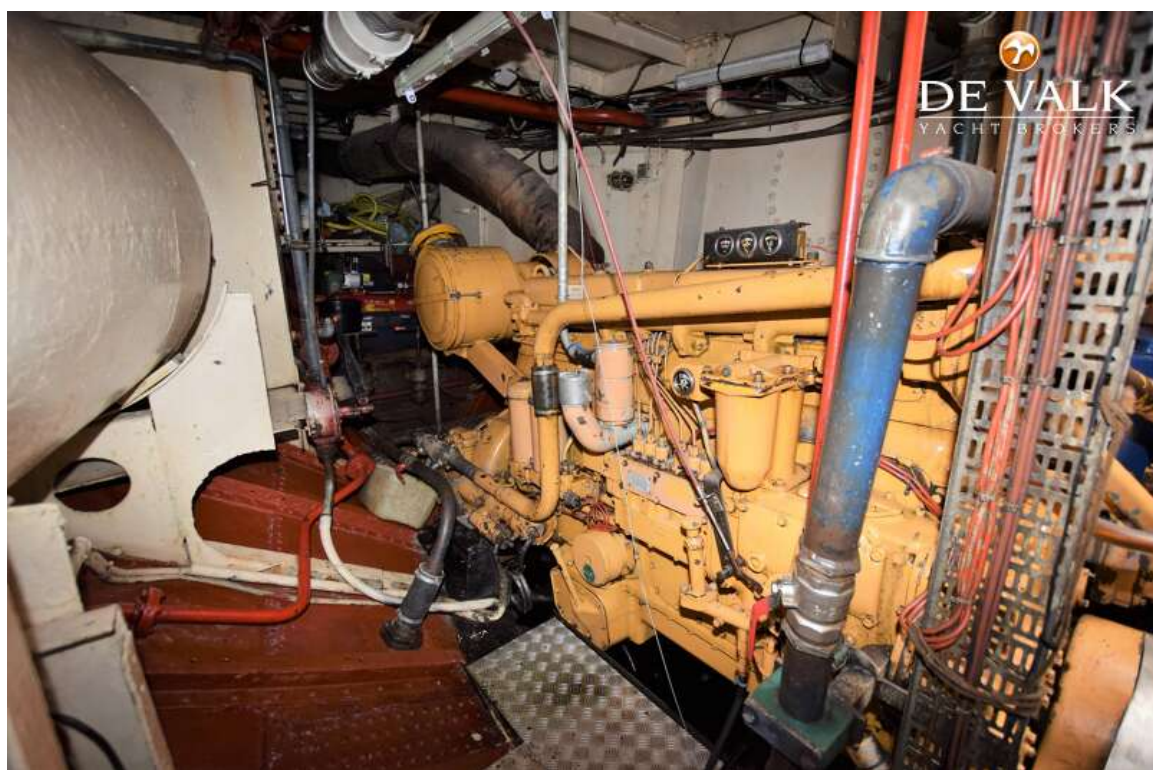
SCHOONER CLASSIC GAFF



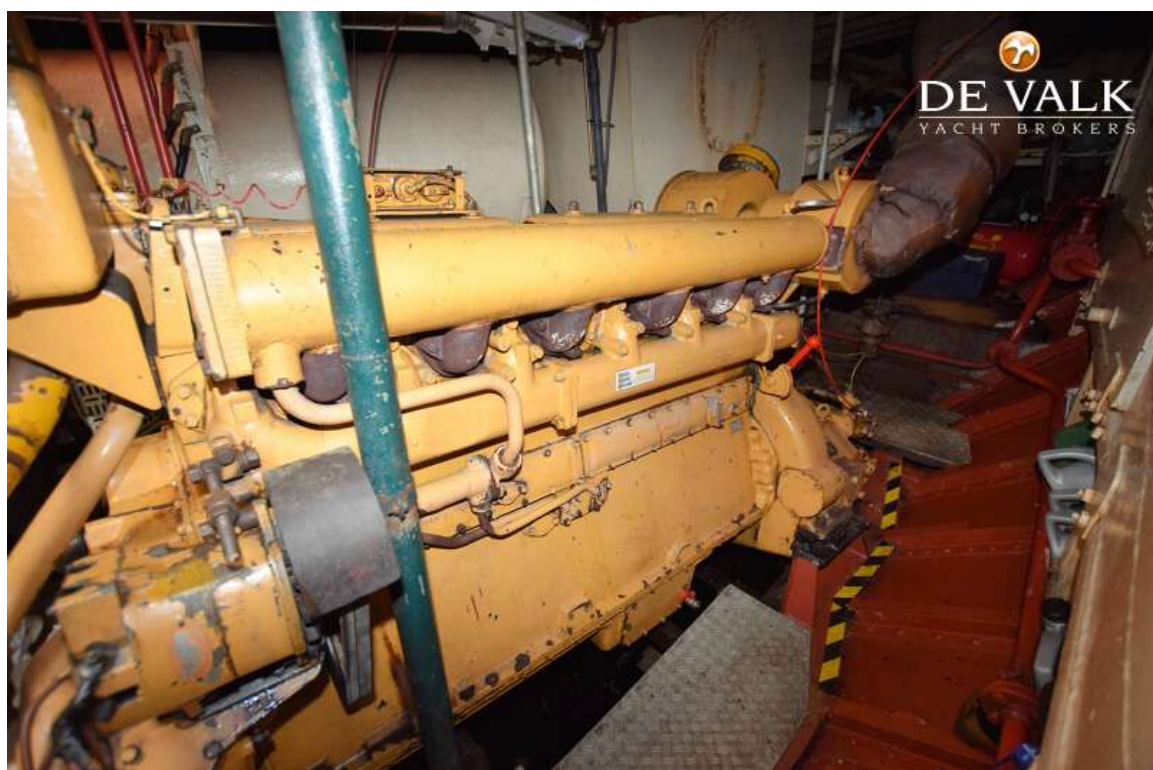
SCHOONER CLASSIC GAFF



SCHOONER CLASSIC GAFF



SCHOONER CLASSIC GAFF



SCHOONER CLASSIC GAFF

