



MOODY 42 MK II

MOODY 42 MK II

BROKER'S COMMENTS

The Moody 42 MKII designed by Angus Primrose is a classic (centre-cockpit) cruiser, solidly built by Moody (UK). Whilst her interior is spacious and comfortable she is also safe, sturdy and easy to sail, ideal for family cruising. She is an old girl however well equipped, ready to sail and very affordable.

Zoë Ann Clark

SPECIFICATIONS

Dimensions	12.74 x 4.07 x 1.72 (m)	Builder	Moody Yachts
Built	1979	Cabins	3
Material	GRP	Berths	6
Engine(s)	1 x Perkins 4-4236M diesel	Hp/Kw	72.00 (hp), 52.99 (kw)
Asking price	sold (VAT)	Lying	at sales office

CONTACT

Sales office	De Valk Almeria	Telephone	+34 950 497 825
Address	Puerto de Almerimar Darsena de la Batea Almerimar ES	E-mail	almeria@devalk.nl

DISCLAIMER

These particulars are given in good faith as supplied but cannot be guaranteed.



GENERAL

Model	MOODY 42 MK II
Type	sailing yacht
LOA (m)	12,74
LWL (m)	10,59
Beam (m)	4,07
Draft (m)	1,72
Headroom (m)	1,95
Year built	1979
Builder	Moody Yachts
Country	United Kingdom
Designer	Angus Primrose
Displacement (t)	11
Ballast (tonnes)	3.9
CE norm	NA
Hull material	GRP
Hull colour	White
Hull shape	deep-V
Keel type	fin keel
Superstructure material	GRP
Deck material	GRP
Deck finish	Treadmaster Anti-slip mats painted 2021
Superstructure deck finish	Treadmaster
Cockpit deck finish	teak
Dorades	yes
Window frame	aluminium
Window material	polycarbonate
Portholes	aluminium
Fuel tank (litre)	steel 400 litres (steel)
Fuel tank 2 (litre)	steel Reserve 50 litres
Freshwater tank (litre)	polyethylene 500 litres (in 2 tanks)



Blackwater tank (litre)	100 litres vetus tank
Wheel steering	cable steering Steel wheel trated with Rilsan and covered with Elkskin
Outside helm position	rack & pinion
Emergency tiller	yes

ACCOMMODATION

Cabins	3
Berths	6
Interior	mahogany
Layout	yes
Deck saloon	yes
Saloon	yes
Headroom saloon (m)	1,95
Heating	diesel ducted hot air Webasto Diesel heating
Navigation center	yes
Chart table	yes
Galley	yes
Countertop	wood
Sink	stainless steel Single
Cooker	induction Induction hob 220v adjustable ring size
Oven	calor gas 3 Gas Burner & Oven Plastimo Pacific 2017
Extractor	Kitchen fan with carbon filter
Microwave	yes
Fridge	Webasto TB 41 coolbox
Hot water system	220V + engine Isotherm 40 litre boiler
Water pressure system	electrical
Manual and/or foot pump	yes
Crockery	yes
Owners cabin	double bed
Bed length (m)	2,00 x 1,40



MOODY 42 MK II

Wardrobe	hanging/drawers/shelves
Toilet	shared
Toilet system	manual Jabsco
Wash basin	at the toilet
Shower	shared
Guest cabin 1	v-bed
Bed length (m)	1,90 x 1,40
Wardrobe	hanging/drawers/shelves
Toilet	shared
Toilet system	electric Jabsco (new pump 2018)
Wash basin	at the toilet
Shower	shared
Guest cabin 2	bunk bed 2 beds
Bed length (m)	2,00 x 1,00
Wardrobe	hanging/drawers/shelves
Toilet	shared
Toilet system	manual
Wash basin	at the toilet
Shower	shared

MACHINERY

No of engines	1
Make	Perkins
Type	4-4236M
HP	72
kW	52.99
Fuel	diesel
Year installed	1979
Maximum speed (kn)	8
Cruising speed (kn)	7
Consumption (l/hr)	4



MOODY 42 MK II

Range (nm)	600
Engine hours	5000
Engine cooling system	freshwater heat exchanger
Drive	shaft
Shaft seal	yes
Engine controls	bowden cable
Gearbox	hydraulic Borg/Warner Velvet Drive
Bowthruster	electric Vetus
Exhaust	watercooled
Propeller type	fixed
Propeller blades	3
Propeller shaft material	stainless steel
Shaft lubrication	grease
Manual bilge pump	yes
Electric bilge pump	yes
Electrical installation	12 and 24 Volts
Start battery	2 x 12V / 110 Ah (New 2020)
Service battery	8 x 12V / 110 Ah (New 2020)
Bowthruster battery	yes
Battery charger	Sterling Electronic Charger
Inverter	220V Power Inverter
Solar panel	55 watts @ 24V
Shorepower	with cable 230V
Insulation transformer	yes
Extra info	240V AC terminal with fuses and RCD

NAVIGATION

Compass	Silva 125 (New 2021)
Depth sounder/log	New (to Garmin GPS MAP 4010)
Windset	New (to Garmin GPS MAP 4010)
VHF	ICOM ICM 323



VHF handheld	Simrad RS35 with Handsfree
Autopilot	Raymarine ST4000 & Raymarine ST6000+
Wind vane steering install.	yes
Radar	Garmin GRM 18HD (new not mounted)
Navtex	NASA Marine Pro-plus
AIS receiver	Seapilot CTRX WiFi
Navigation lights	yes

EQUIPMENT

Sprayhood	yes
Cockpit cover	yes
Bimini	with side covers New 2019
Sun awning	Large sunroof for foredeck and side panels for both wind and sun
Cockpit table	Folding and extending
Bathing platform	yes
Boarding ladder	stainless steel
Gangway	Aluminum
Anchor	CQR Plough
Anchor chain	80m Chain (8mm)
Anchor 2	Rocna 25 kg (new)
Windlass	electrical Simpson Lowrance 24V
Dinghy	rigid inflatable Homewave 2.5 with Aluminium floor
Outboard support	yes
Sea railing	wire
Grab rail (superstructure)	teak
Railing side opening gates	yes
Pushpit	yes
Pulpit	yes
Life raft	container Seaforce
Life raft (pers)	10
Lifejackets	yes



Fenders	yes
Mooring lines	yes
Spare parts	yes
Tools	yes
Clock - barometer	yes
Fire extinguisher	yes

RIGGING

Rigging	ketch
Standing rigging	wire
Brand mast	Norseman
Material mast	aluminium Carbon boom
Spreaders	1 set each mast
Mainsail cover	Lazy Bag
Battcars	yes
Fully battened mainsail	yes
Mizzen	yes
Mizzen sailcover	Lazy Bag & Jacks
Jib	yes
Genoa	yes
Genoa furler	SCRR Roller
Spinnaker	yes
Reefing System	slabreefing (defect)
Boomvang	tackle
Secondary sheet winch	1 x Lewmar ST 7"
Genoa sheetwinches	2 x Warski ST 2 SP 45
Halyard winches	2 y Lewmar 2 SP 16"
Reefing winch	2 x Lewmar 2 SP 16"
Spi-pole	aluminium
Gennaker pole	carbon
Extra info	Half Winder/Reacher spinnaker with sock



Extra info

Running rigging new 2016



MOODY 42 MK II



MOODY 42 MK II



MOODY 42 MK II



MOODY 42 MK II



MOODY 42 MK II



MOODY 42 MK II



MOODY 42 MK II



MOODY 42 MK II



MOODY 42 MK II



MOODY 42 MK II



MOODY 42 MK II



MOODY 42 MK II



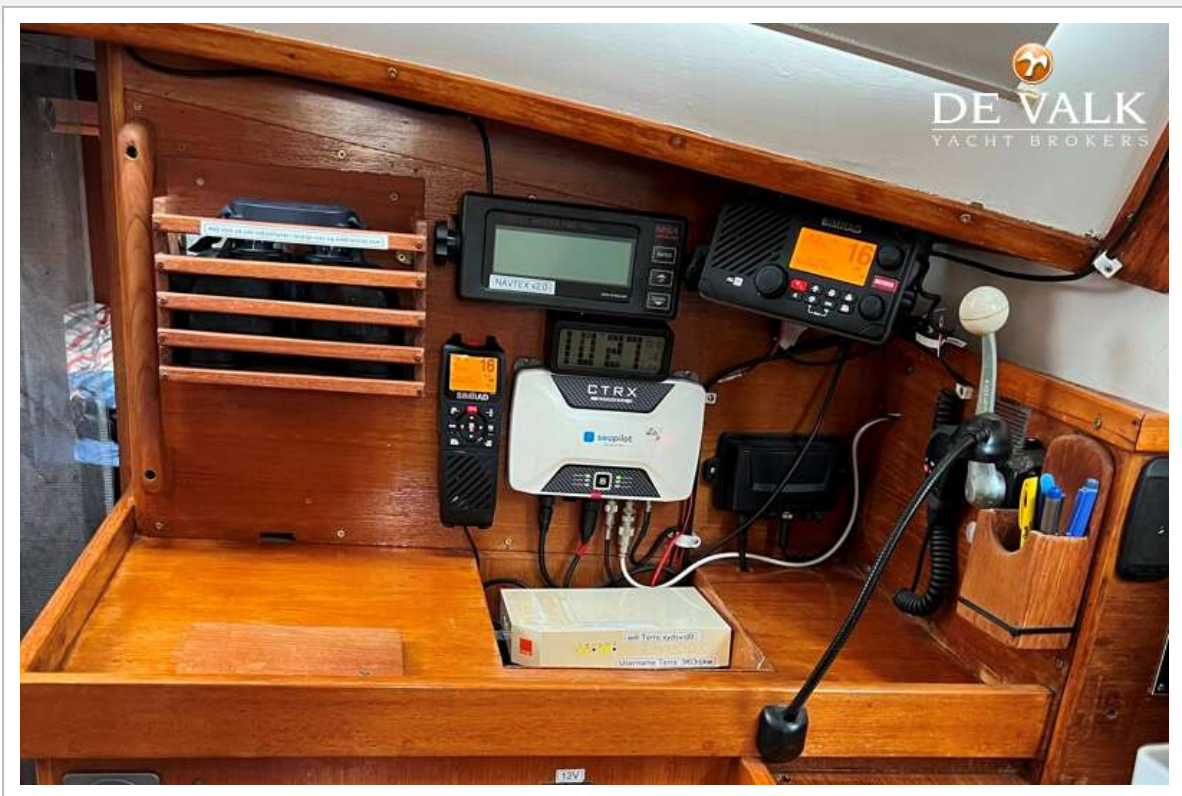
MOODY 42 MK II



MOODY 42 MK II



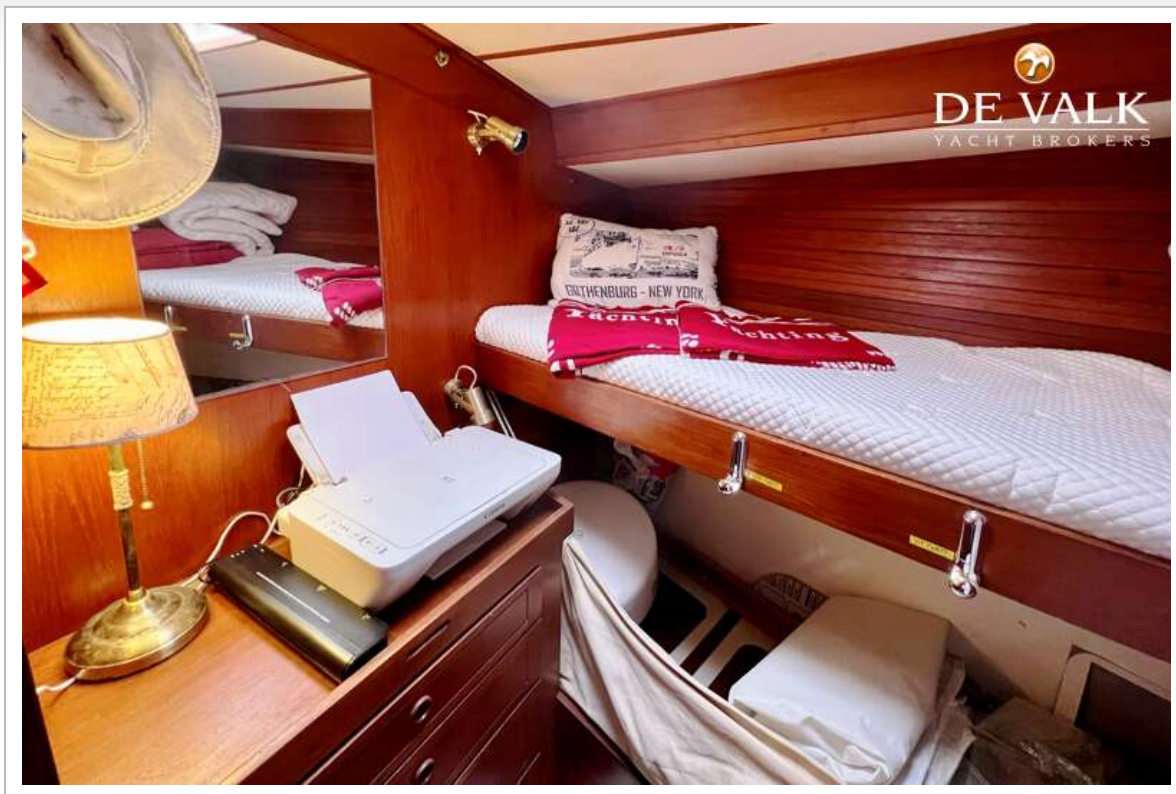
MOODY 42 MK II



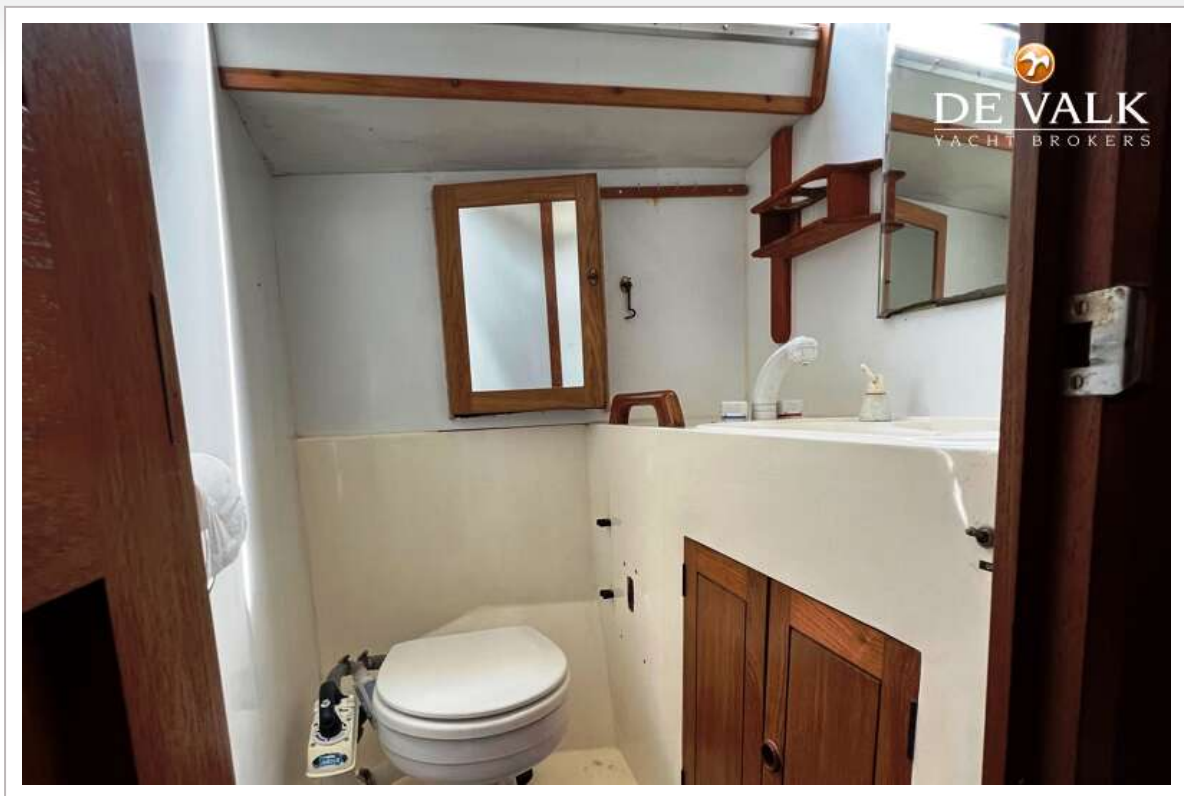
MOODY 42 MK II



MOODY 42 MK II



MOODY 42 MK II



MOODY 42 MK II

