



SUPER VAN CRAFT 1600

SUPER VAN CRAFT 1600

BROKER'S COMMENTS

Double Dutch is without doubt a very fine live aboard boat for an unbelievably affordable price. It is reliable, inexpensive to maintain and economic under power. Can be used as a very comfortable apartment or a cruiser and is also canal friendly. Owners used the boat as a couple for the last five years in the Med.

Miha Spendal

SPECIFICATIONS

Dimensions	16.00 x 4.30 x 1.50 (m)	Builder	Klaassens
Built	1984	Cabins	2
Material	Steel	Berths	5
Engine(s)	2 x Volvo Penta Penta MD 70 diesel	Hp/Kw	2 x 140.00 (hp), 103.04 (kw)
Asking price	sold (VAT)	Lying	elsewhere / Not at sales office

CONTACT

Sales office	De Valk Istria	Telephone	+386 (1) 600 2704
Address	(Marina Izola) Dantejeva Ulica 22 6310 Izola SI	E-mail	istria@devalk.nl

DISCLAIMER

These particulars are given in good faith as supplied but cannot be guaranteed.



SUPER VAN CRAFT 1600

GENERAL

Model	SUPER VAN CRAFT 1600
Type	motor yacht
LOA (m)	16,00
LWL (m)	15,00
Beam (m)	4,30
Draft (m)	1,50
Year built	1984
Launched	1984
Builder	Klaassens
Country	The Netherlands
Displacement (t)	25
Hull material	steel
Hull colour	white Painted 2010
Superstructure material	wood
Deck finish	teak
Superstructure deck finish	teak
Cockpit deck finish	teak
Antifouling (year)	2022
Window frame	aluminium
Window material	polycarbonate
Mast can be lowered	manual
Fuel tank (litre)	steel 2000
Level indicator (fuel tank)	yes
Freshwater tank (litre)	1200
Wheel steering	cable steering
Inside helm position	yes
Outside helm position	cable steering
More info on hull	Survey done in 2021

ACCOMMODATION



SUPER VAN CRAFT 1600

Cabins	2
Berths	5
Interior	teak
Floor	wood
Aft deck	yes
Air-conditioning	yes
Navigation center	yes
Chart table	yes
Aft Cabin	yes
Dinette	yes
Galley	yes
Countertop	granite
Sink	stainless steel
Cooker	calor gas
Oven	Electric
Extractor	yes
Fridge	yes
Freezer	yes
Hot water system	yes
Water pressure system	yes
Owners cabin	double bed
Wardrobe	hanging/drawers/shelves
Bathroom	en suite
Toilet	en suite
Toilet system	electric
Bath tub	en suite
Guest cabin 1	bunk bed 3
Wardrobe	hanging/drawers/shelves
Bathroom	en suite
Toilet	en suite
Toilet system	electric
Wash basin	in the bathroom



SUPER VAN CRAFT 1600

Shower	en suite
Washing machine	yes

MACHINERY

No of engines	2
Make	Volvo Penta
Type	Penta MD 70
HP	140
kW	103.04
Fuel	diesel
Year installed	1984
Year of overhaul	Partial in 2020
Engine hours	3400
Engine cooling system	freshwater heat exchanger
Drive	shaft
Engine controls	bowden cable
Bowthruster	electric
Generator	10kW
Start battery	yes
Service battery	yes
Battery charger	yes
Shorepower	with cable

NAVIGATION

Compass	yes
Depth sounder	yes
Log	yes
Autopilot	yes

EQUIPMENT



SUPER VAN CRAFT 1 600

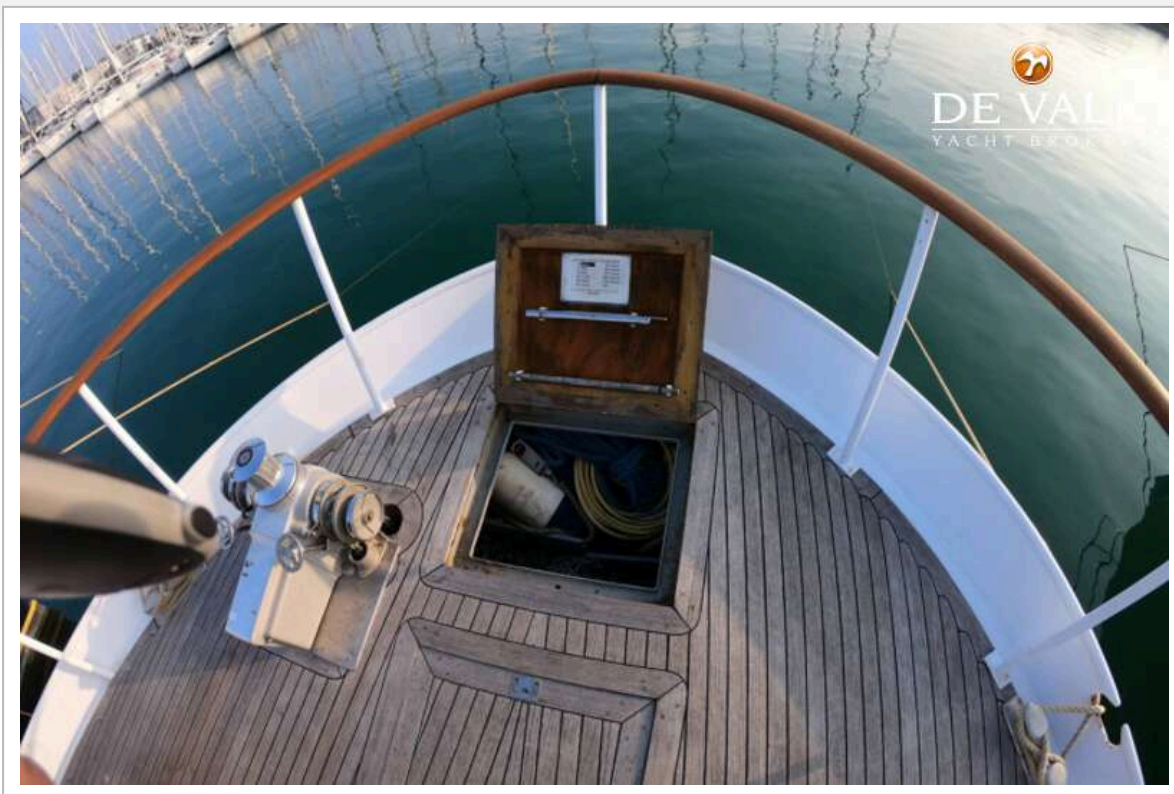
Cockpit cover	yes
Bimini	yes
Winter cover	NEW 2022 autumn
Cockpit cushions	yes
Cockpit table	yes
Cockpit chairs	yes
Bathing platform	yes
Boarding ladder	yes
Gangway	Hydraulic, Opacmare, new
Anchor	100m 1mm chain, anchor 50kg
Anchor chain	100m 10mm, galvanised
Windlass	Lofrans
Dinghy	yes
Fenders	yes
Mooring lines	yes



SUPER VAN CRAFT 1600



SUPER VAN CRAFT 1600



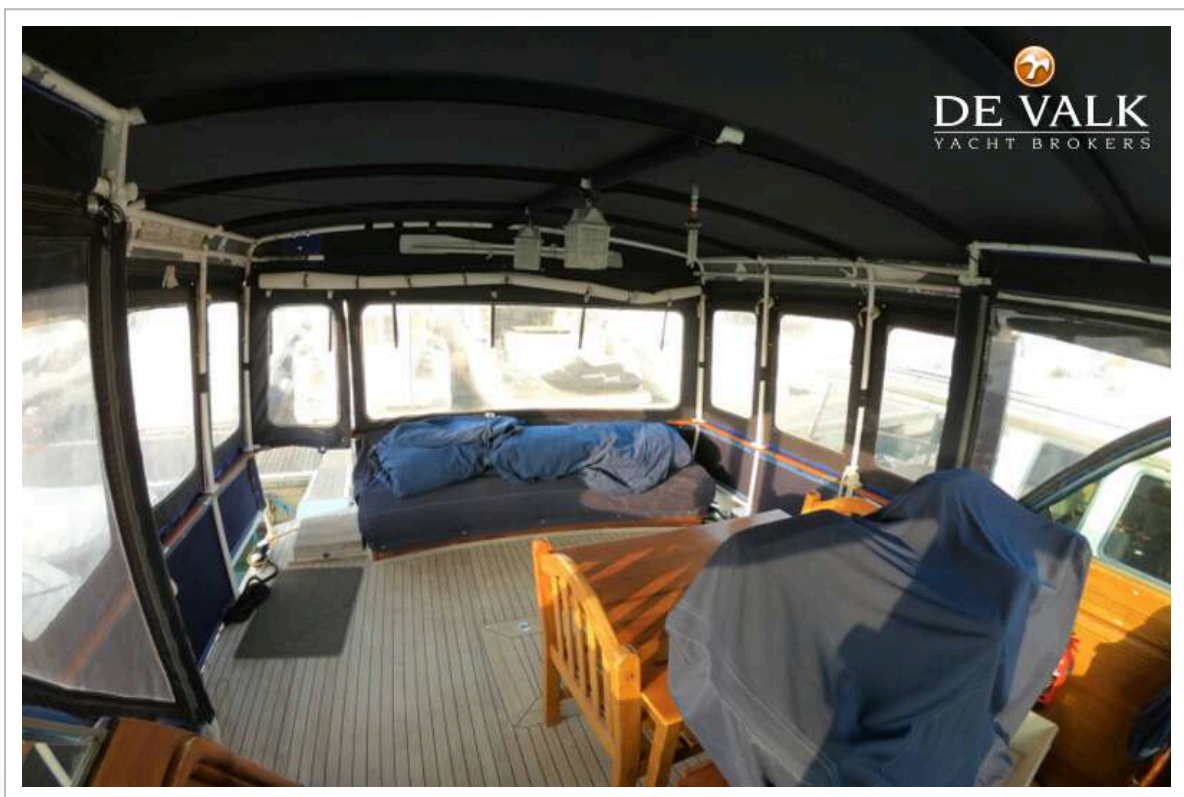
SUPER VAN CRAFT 1600



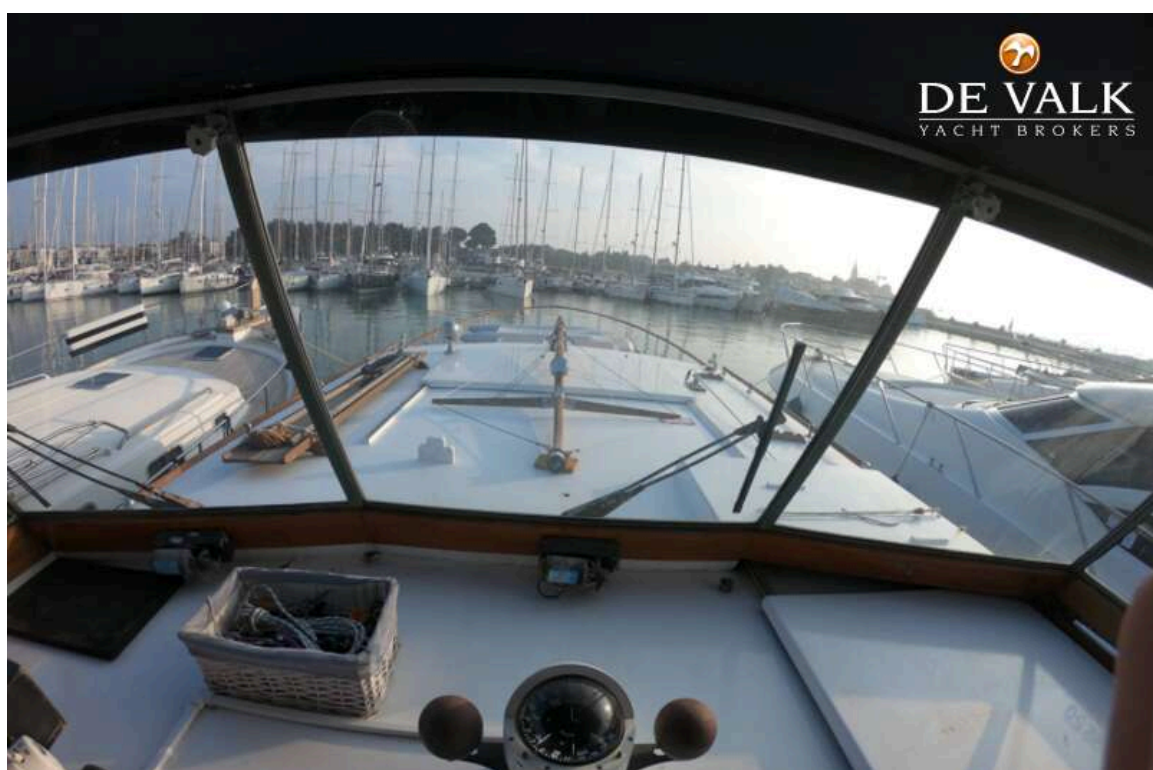
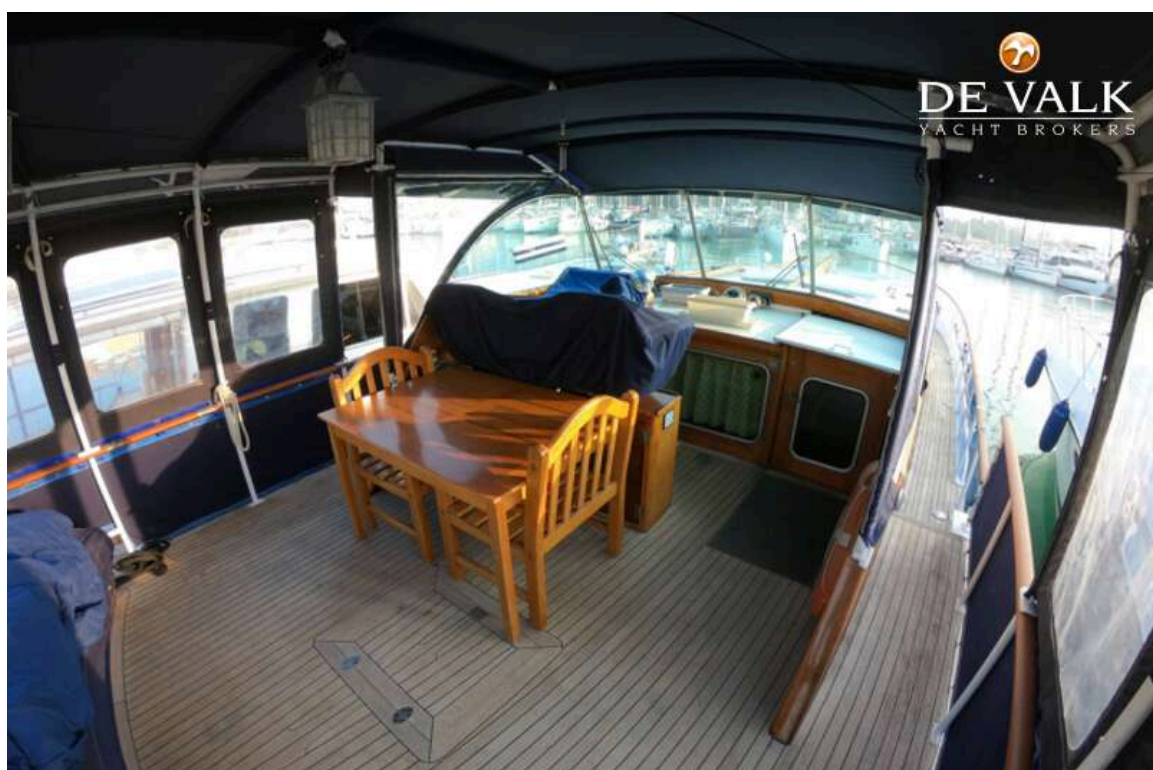
SUPER VAN CRAFT 1600



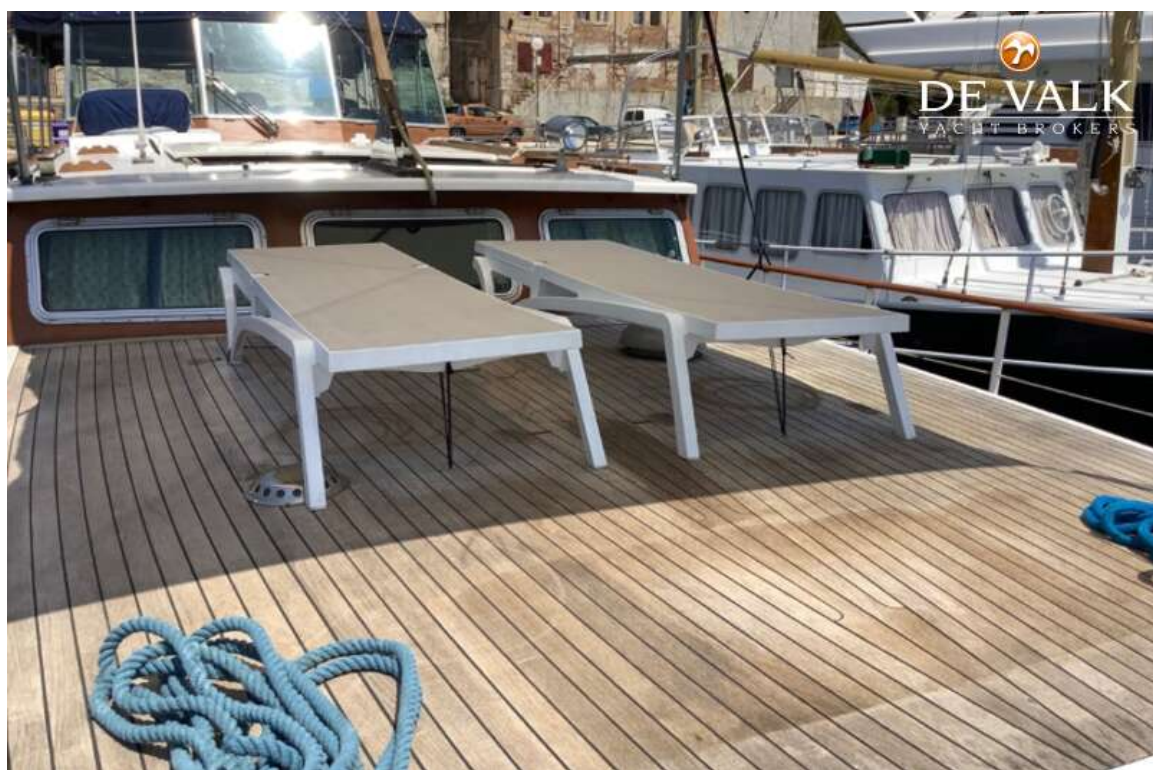
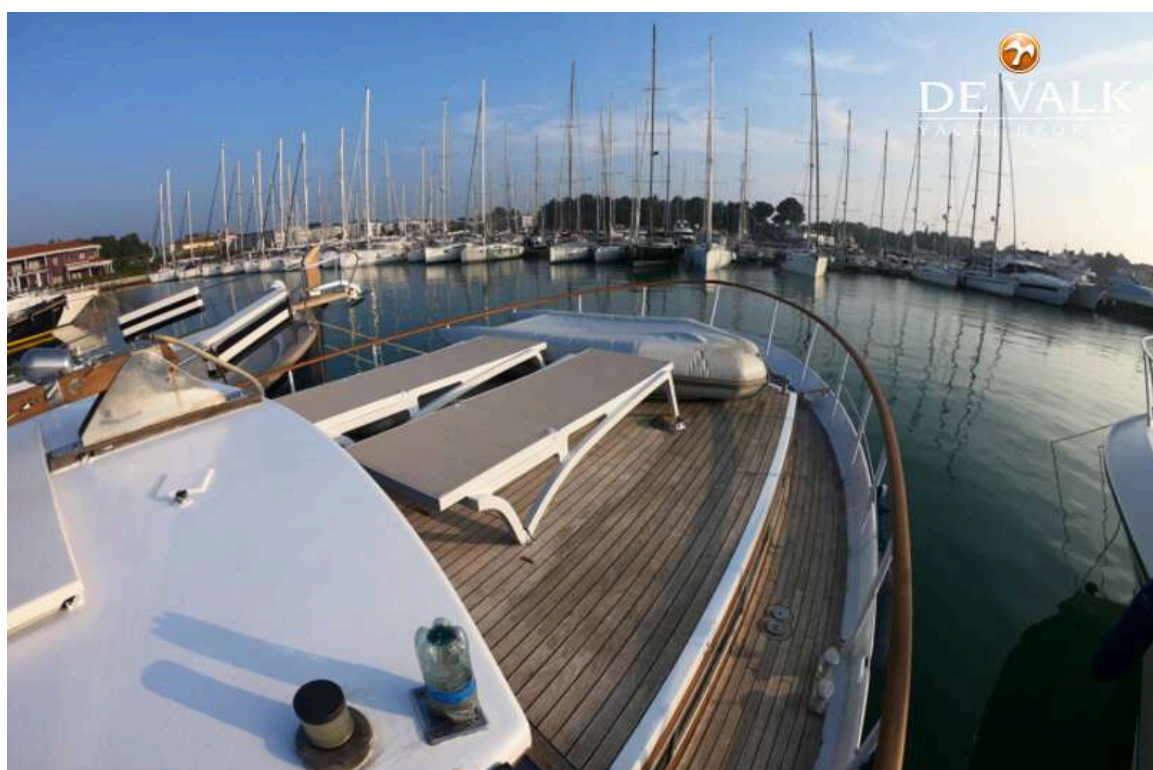
SUPER VAN CRAFT 1600



SUPER VAN CRAFT 1600



SUPER VAN CRAFT 1600



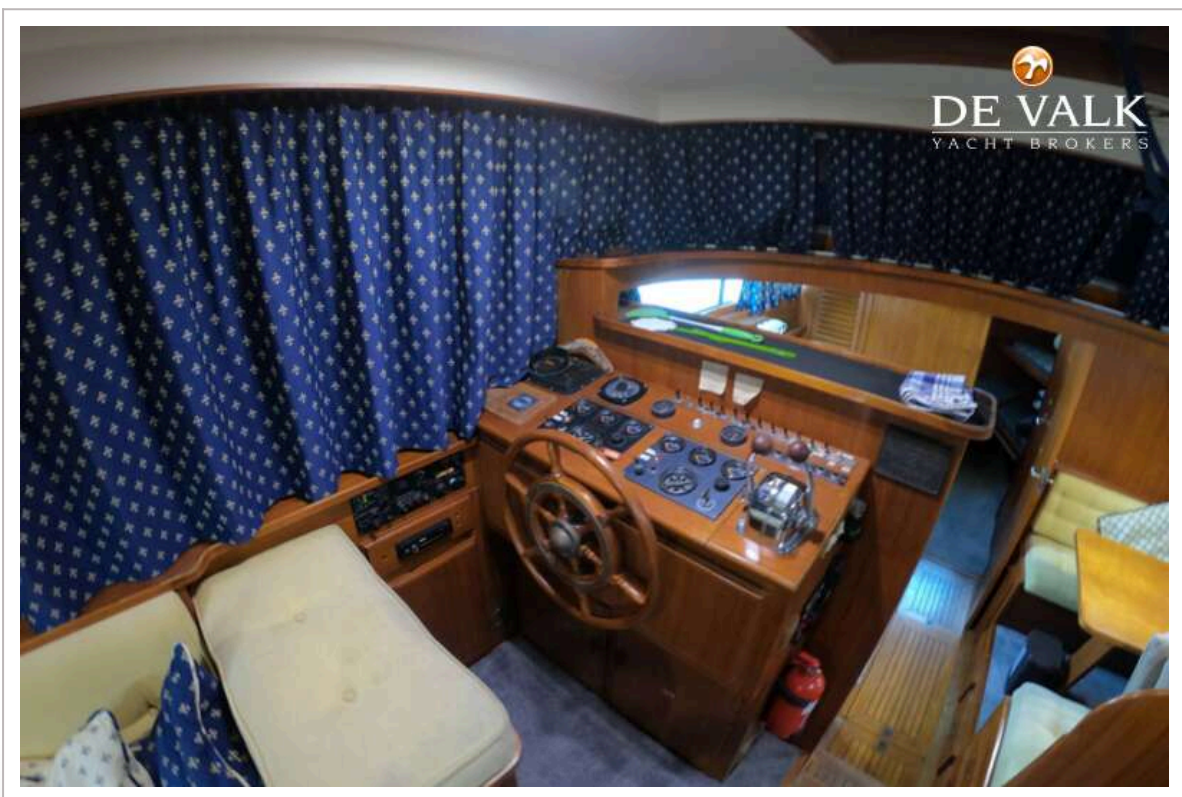
SUPER VAN CRAFT 1600



SUPER VAN CRAFT 1600



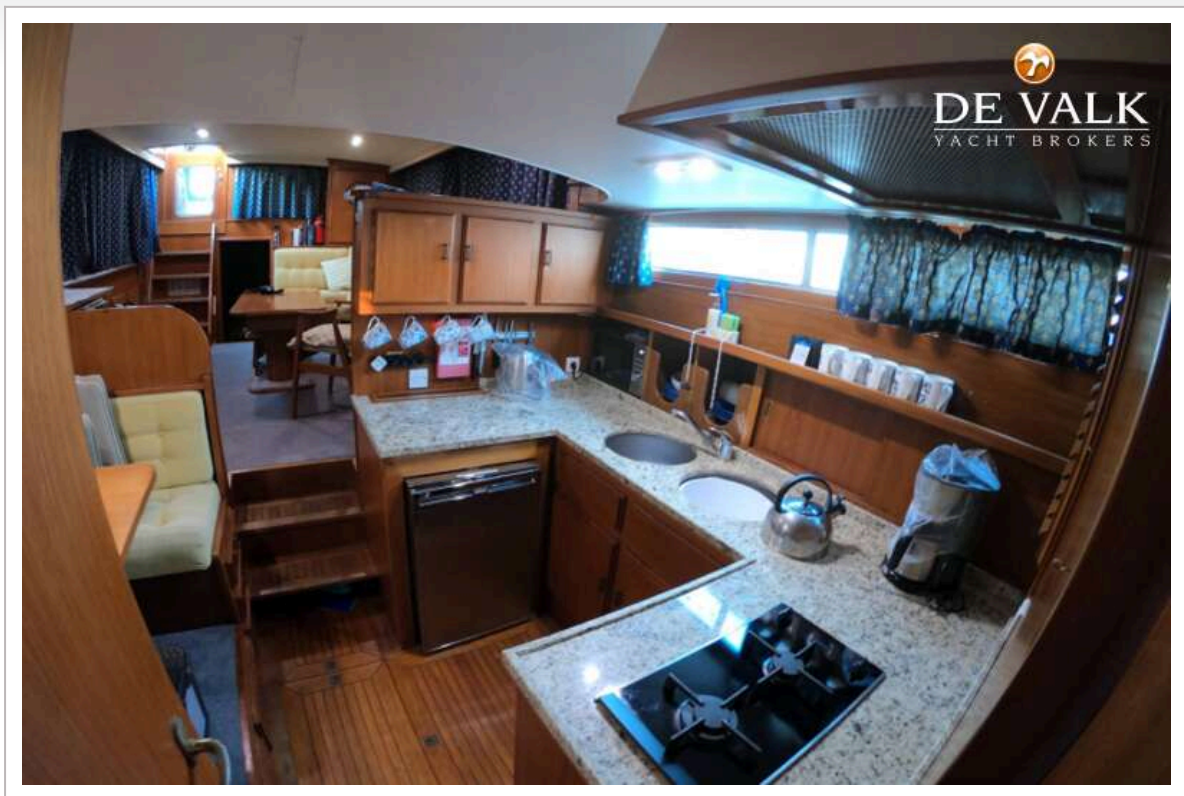
SUPER VAN CRAFT 1600



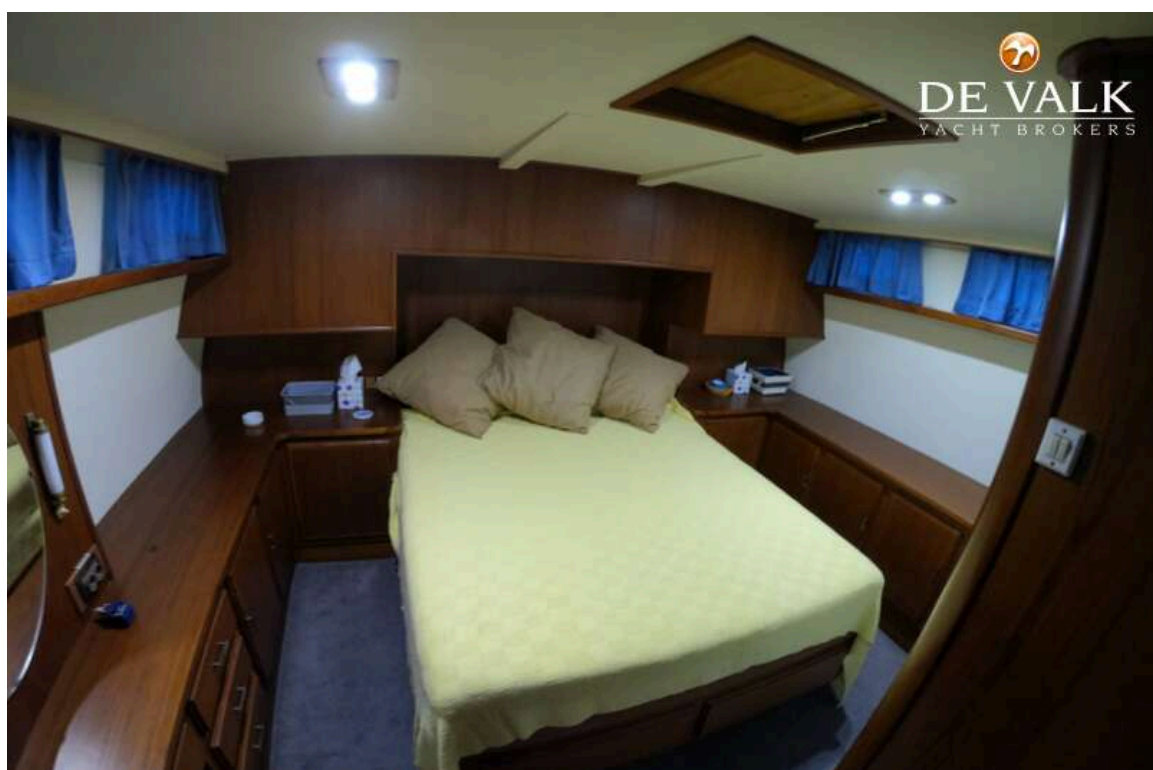
SUPER VAN CRAFT 1600



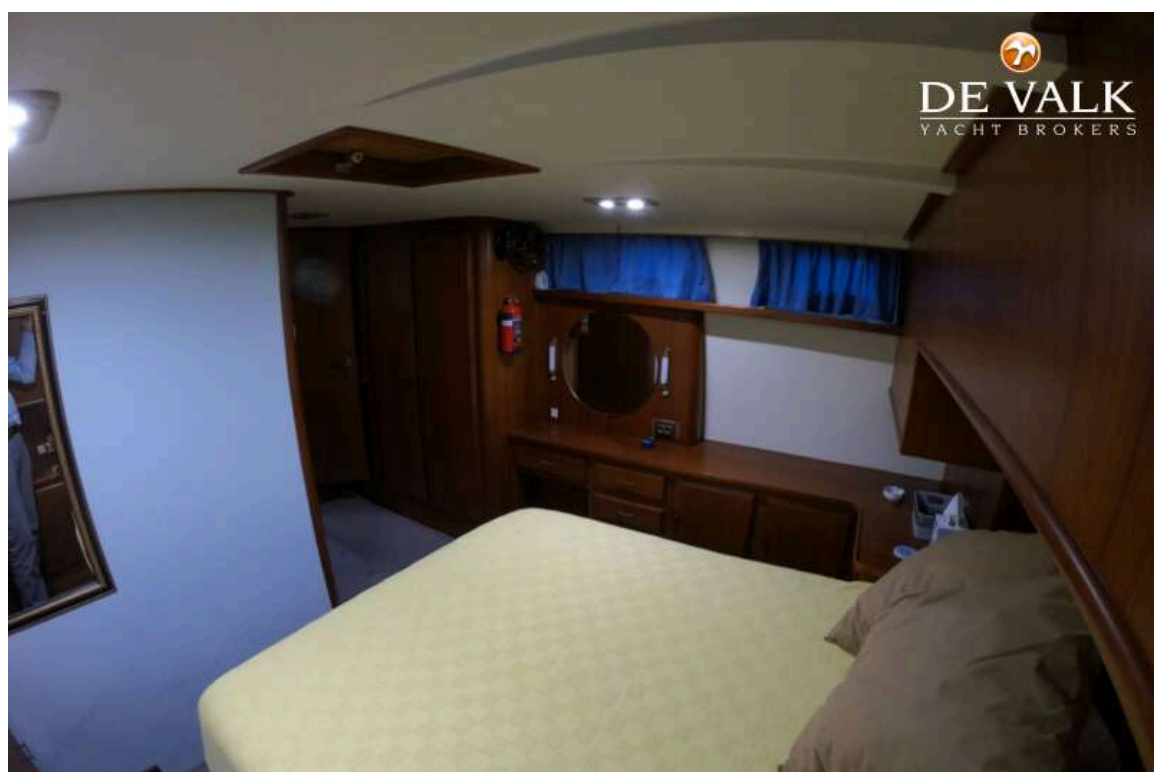
SUPER VAN CRAFT 1600



SUPER VAN CRAFT 1600



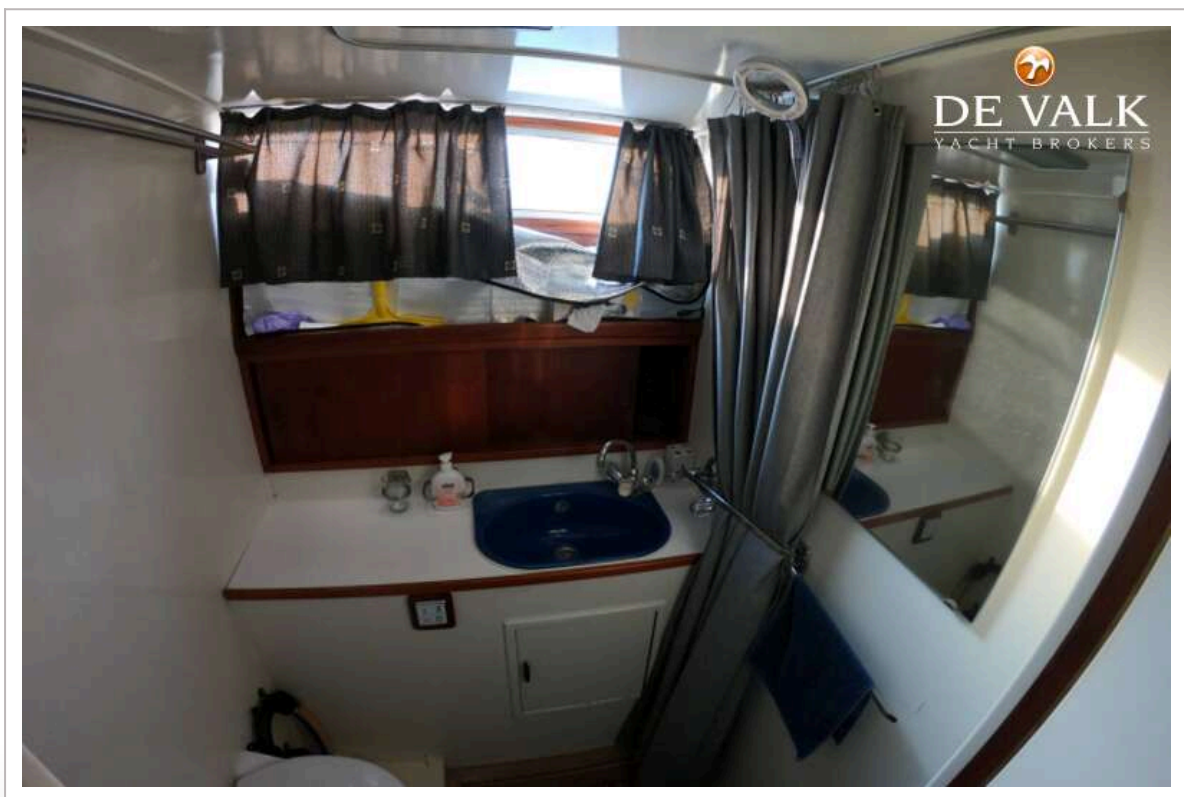
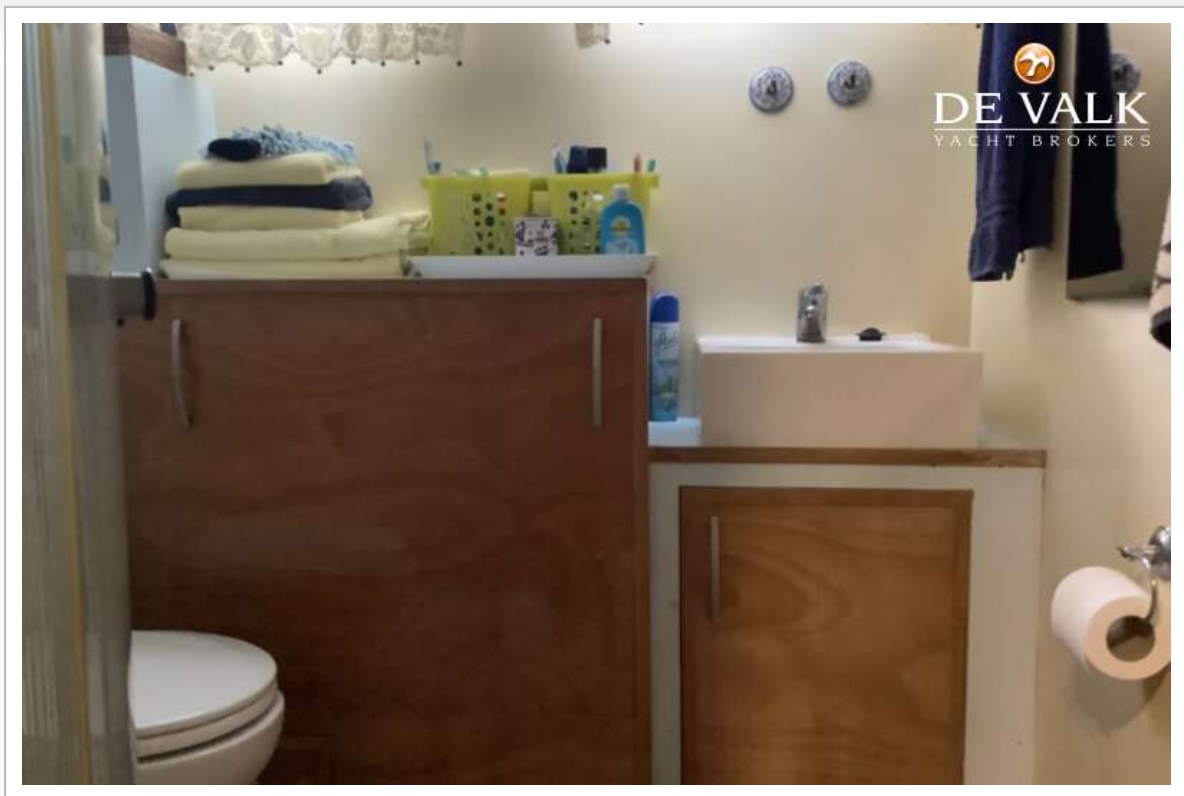
SUPER VAN CRAFT 1600



SUPER VAN CRAFT 1600



SUPER VAN CRAFT 1600



SUPER VAN CRAFT 1600



SUPER VAN CRAFT 1600

