



DE VALK
YACHT BROKERS



MAIORA 70



DE VALK
YACHT BROKERS

BROKER'S COMMENTS

The Maiora 70 is an Italian luxury yacht built by the renowned FIPA shipyard. She is completely renovated in 2013/2014. She has two large double berth cabins and one cabin with 3 beds all with shower and toilet and one crew cabin with 2 beds. She has a modern, fully equipped kitchen and a large lounge with bar and a large sofa-bed seating area adjacent to the kitchen and wheelhouse. There is also a seating area outside on the aft deck with a large full-covering aft canopy. Up on the flybridge is the second helm station, a sofa group and a heated jacuzzi. For inspection make an appointment.

Pieter Bosma

SPECIFICATIONS

Dimensions	21.27 x 5.43 x 1.60 (m)	Builder	FIPA shipyard
Built	1986	Cabins	4
Material	GRP	Berths	9
Engine(s)	2 x Detroit 12V71Ti diesel	Hp/Kw	2 x 735.00 (hp), 540.96 (kw)
Asking price	€ 260.000 (VAT Paid)	Lying	elsewhere / Not at sales office

CONTACT

Sales office	De Valk Sneek	Telephone	+31 515 42 80 30
Address	Zwolsmanweg 7 8606 KC Sneek The Netherlands	E-mail	sneek@devalk.nl

DISCLAIMER

These particulars are given in good faith as supplied but cannot be guaranteed.



GENERAL

Model	MAIORA 70
Type	motor yacht
LOA (m)	21,27
Beam (m)	5,43
Draft (m)	1,60
Air draft (m)	5,80
Year built	1986
Builder	FIPA shipyard
Country	Italy
Displacement (t)	50
Hull material	GRP
Hull colour	white
Hull shape	deep-V
Superstructure material	aluminium
Deck material	GRP
Deck finish	teak
Antifouling (year)	2022 (August)
Dorades	yes
Window frame	aluminium
Window material	glass
Deckhatch	yes
Portholes	aluminium
Insulation	foam
Flybridge	New cushions, canopy and cushion cover 2019. New Bimini top 2022
Flybridge suncover	2022
Radar arch	yes
Fuel tank (litre)	steel 5000
Level indicator (fuel tank)	yes
Freshwater tank (litre)	polyethylene
Level indicator (freshwater)	yes



Blackwater tank (litre)	500
Level indicator (blackwater)	yes
Blackwater tank extraction	yes
Wheel steering	hydraulic
Inside helm position	yes
Flybridge helm position	hydraulic
More info on hull	Epoxy treated below the waterline
More info on paintwork	De IJssel coating 2 component

ACCOMMODATION

Cabins	4
Berths	9
Floor	teak and holly
Aft deck	With large full-covering canopy 2019
Pilot house	yes
Saloon	yes
Heating	central heating
Dinette	yes
Opening door to cockpit	yes
Galley	yes
Countertop	plastic
Sink	stainless steel
Oven	yes
Extractor	yes
Microwave	yes
Fridge	yes
Freezer	yes
Hot water system	on central heating
Water pressure system	electrical
Dishwasher	yes
Owners cabin	double bed



Bed length (m)	200 x 160
Wardrobe	hanging/drawers/shelves
Bathroom	en suite
Toilet	en suite
Toilet system	electric
Wash basin	in the bathroom
Shower	en suite
Jacuzzi	at the flybridge
Guest cabin 1	double bed
Bed length (m)	200 x 160
Wardrobe	hanging/drawers/shelves
Bathroom	en suite
Toilet	en suite
Toilet system	electric
Wash basin	in the bathroom
Shower	en suite
Guest cabin 2	single bed 3x
Bed length (m)	200 x 80
Wardrobe	hanging/drawers/shelves
Bathroom	en suite
Toilet	en suite
Toilet system	electric
Wash basin	in the bathroom
Bath tub	en suite
Guest cabin 3	twin single
Bed length (m)	200 x 80
Toilet	separate
Toilet system	electric
Wash basin	in the bathroom
Shower	separate
Flybridge	yes



Extra info	Pulsonex 30 kW - New hoses throughout the heating system. (2022)
Extra info	Air Conditioning / heat pump available but not installed

MACHINERY

No of engines	2
Make	Detroit
Type	12V71Ti
HP	735
kW	540.96
Fuel	diesel
Year of overhaul	2014
Maximum speed (kn)	18
Cruising speed (kn)	10
Engine hours	2507 & 2717
Engine cooling system	freshwater heat exchanger
Drive	shaft
Shaft seal	yes
Engine controls	bowden cable
Gearbox	hydraulic
Bowthruster	hydraulic
Exhaust	watercooled
Propeller type	fixed
Propeller blades	5
Propeller shaft material	stainless steel
Shaft lubrication	water
Electric bilge pump	yes
Generator	Onan 16 kVA
Running hours generator	2120
Start battery	yes
Service battery	6 x 240 Ah (sept. 2022)



Generator battery	yes
Windlass battery	yes
Battery charger	2 x 40 Ah - Samlex SEC 2440
Inverter	Victron Phoenix 24V/5000W
Shorepower	with cable
Watermaker	200 liter/hour (2019) custom made, swedish engineering
Extra info	Engines serviced in 2022 (July) Exhaust system stainless steel 2022
Extra info	The boat can be controlled remotely by a mobile app (Saia Burgess) with full control over engine, bowthruster, heating system, bilge pumps, cameras etc.
Extra info	New hydraulic pump for new bow truster 2014 New 24 v generators 2019 New service batteries 2022. (6 pc 240 ah) New stainless steel exhausts 2014

NAVIGATION

Electric compass	Furuno
Multi control display	yes
Depth sounder	yes
Radar	Furuno
Plotter/GPS	Furuno
Camera	IP Cameras Synology Surveillance
Navigation lights	yes
Searchlight	remote controlled

EQUIPMENT

Bimini	2022
Bathing platform	New bathing platform by FIPA shipyard 2005
Boarding ladder	yes
Gangway	hydraulic
Anchor	Pool
Anchor chain	yes

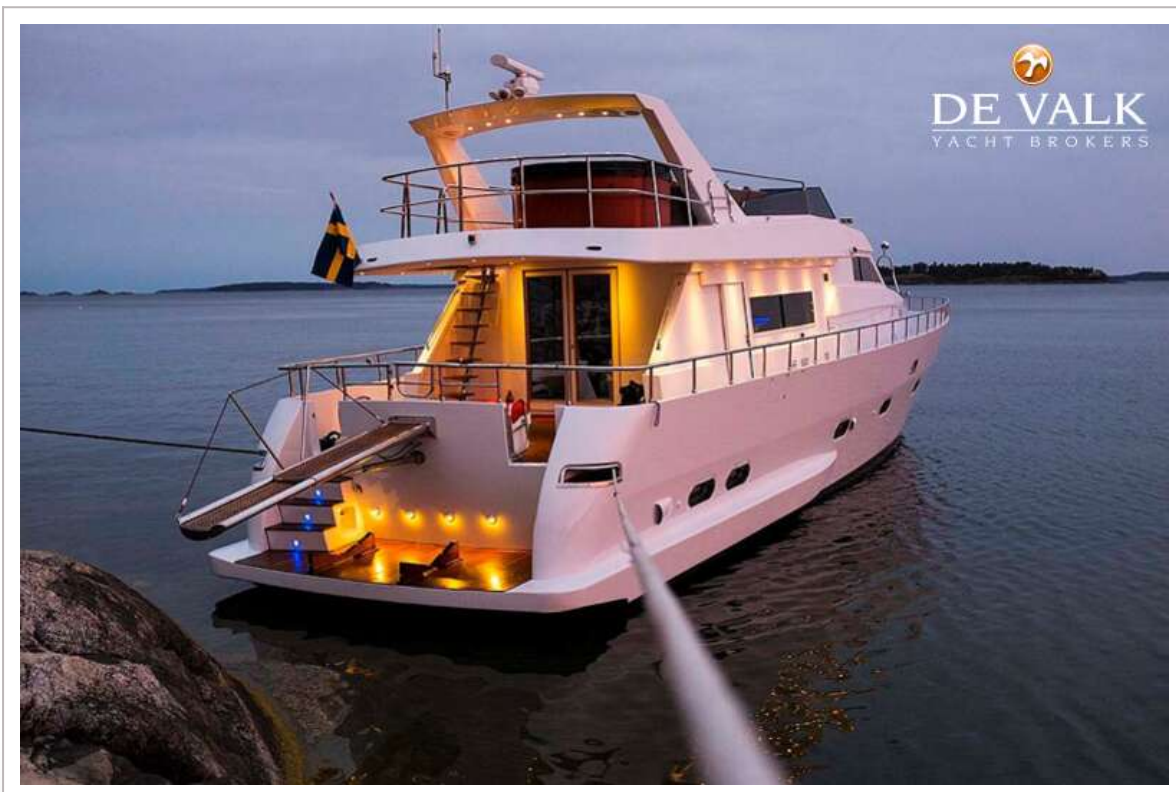


MAIORA 70

Windlass	electrical Lofrans Titan 24V
Sea railing	stainless steel
Railing side opening gates	yes
Wiper	yes
Horn	electric
Fenders	yes
Mooring lines	yes
TV	Smart TV
Radio-cd player	yes
Speakers in salon	yes
Extra info	The boat was originally build as a Maiora 65, but in 2005 the FIPA shipyard extended the bathing platform, with 5 feet and transformed it to the Maiora 70



MAIORA 70



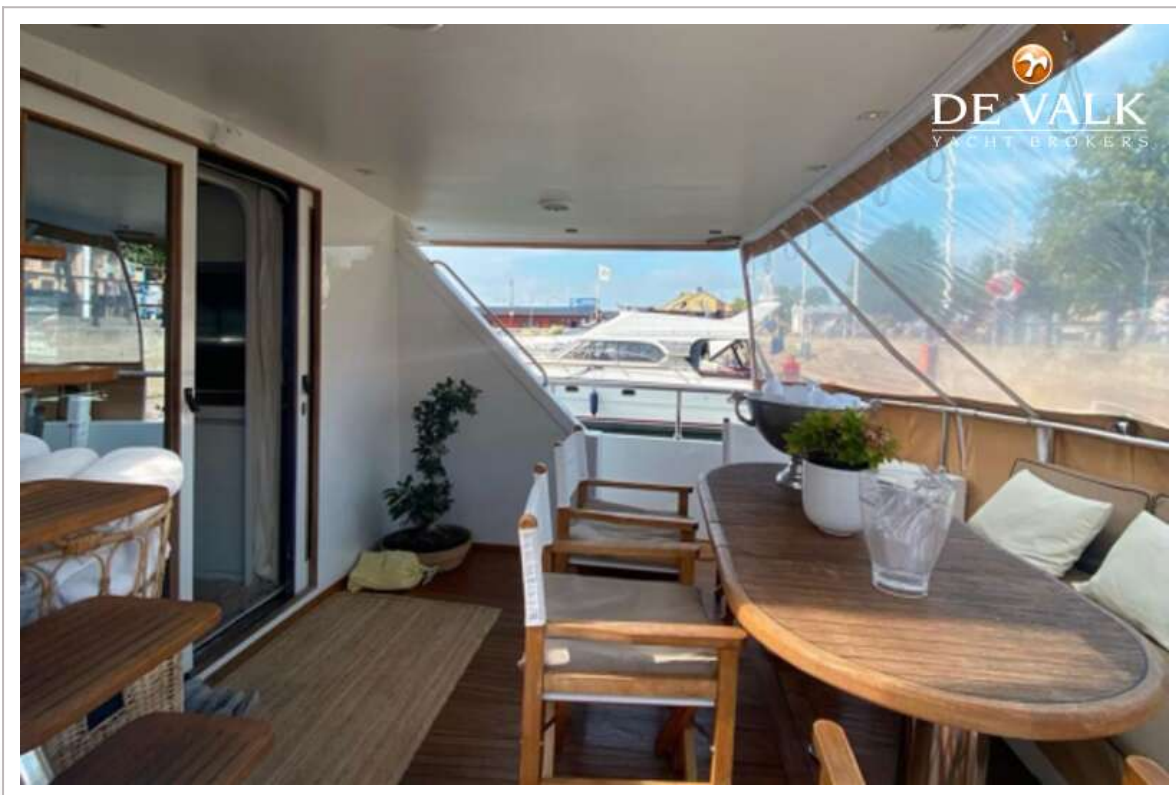
MAIORA 70



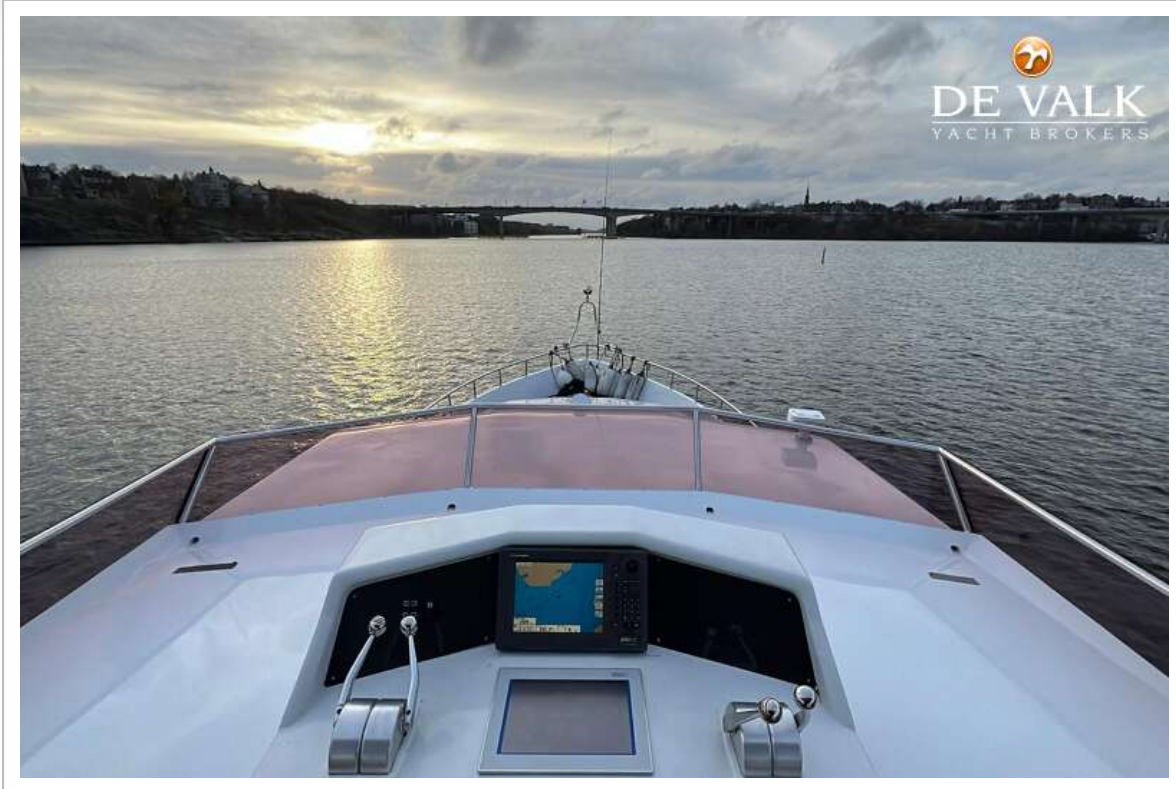
MAIORA 70



MAIORA 70



MAIORA 70



MAIORA 70



MAIORA 70



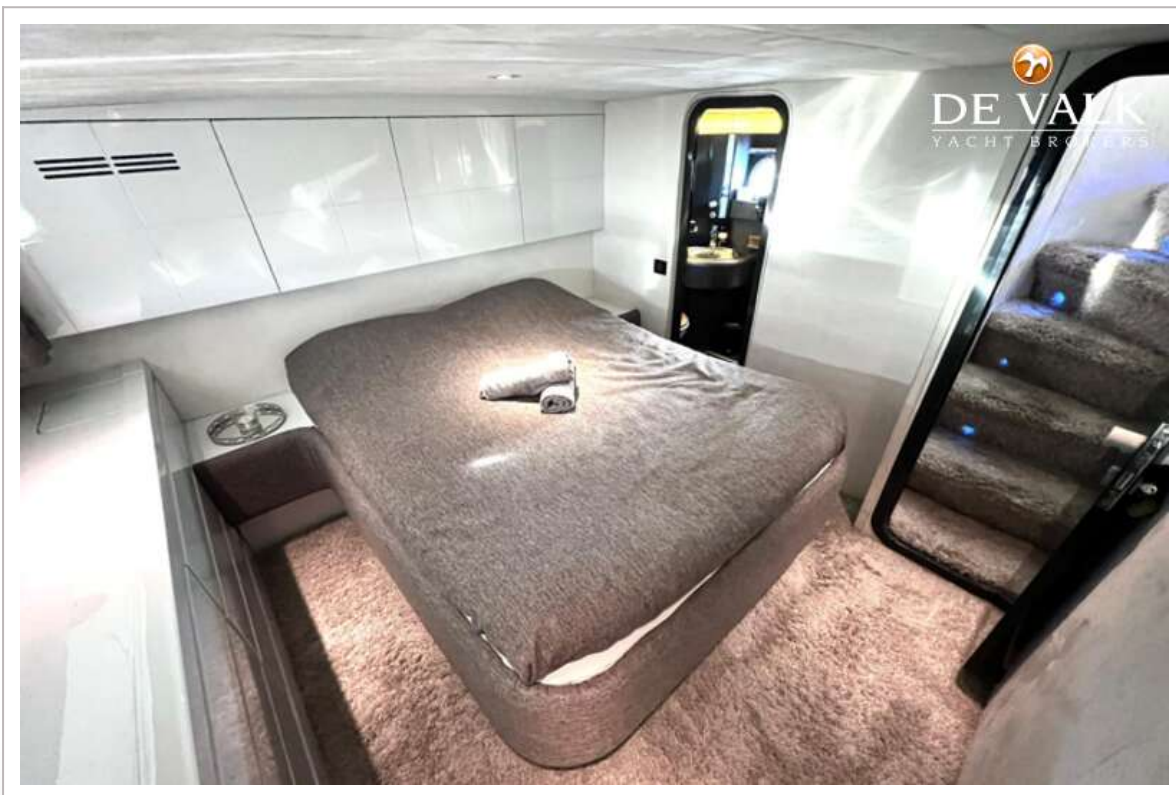
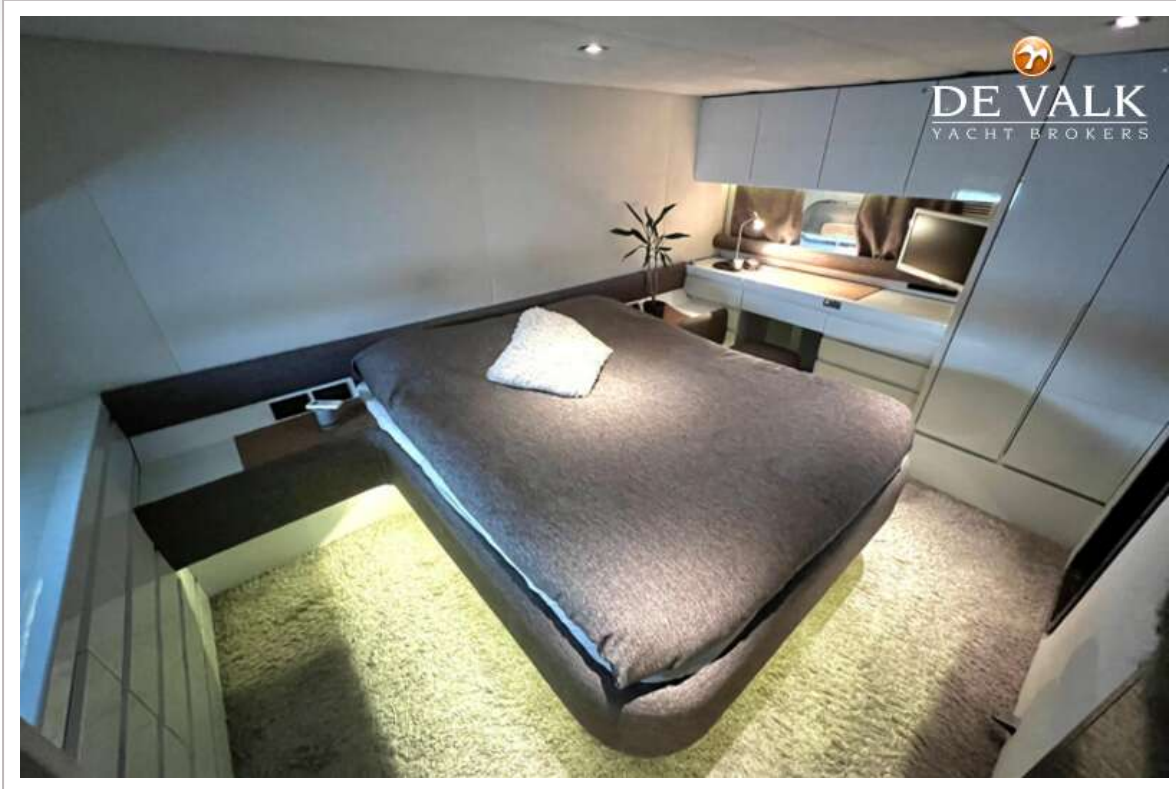


MAIORA 70



MAIORA 70





MAIORA 70



MAIORA 70



