



DE VALK
YACHT BROKERS



DOMINATOR 780S



DE VALK
YACHT BROKERS

BROKERAGE | CHARTER | BERTHS | FINANCE | INSURANCE | YACHT MANAGEMENT

DOMINATOR 780S

BROKER'S COMMENTS

'Fashion Style' is one of the finest Dominator 780 S-Deluxe on the market. She is a perfect example of Italian knowhow in terms of "Luxury design integration" from the famous T4Design studio. This yacht has demonstrated its reliability over time and remains thanks to her professional crew, in perfect condition. Only privately used, she is now for sale by her original and sole owner for a attractive price. Please contact us for more details.

Leonard Bonnema

SPECIFICATIONS

Dimensions	23.98 x 6.50 x 1.50 (m)	Builder	Dominator
Built	2012	Cabins	4
Material	GRP	Berths	8
Engine(s)	2 x MAN V12 Common Rail diesel	Hp/Kw	2 x 1,800.00 (hp), 1,324.80 (kw)
Asking price	€ 2.150.000 (VAT Not paid)	Lying	contact sales office

CONTACT

Sales office	Falcon Rydell	Telephone	+31 (0)35 582 90 29
Address	't Breukeleveense Meentje 6 1231LM Loosdrecht / Wijdmeren NL	E-mail	info@falconrydell.com

DISCLAIMER

These particulars are given in good faith as supplied but cannot be guaranteed.



DOMINATOR 780S

GENERAL

Model	DOMINATOR 780S
Type	motor yacht
LOA (m)	23,98
Beam (m)	6,50
Draft (m)	1,50
Year built	2012
Builder	Dominator
Country	Italy
Designer	Team4design
Hull material	GRP
Superstructure material	GRP
Deck material	teak
Cockpit deck finish	yes
Portholes	yes
Fuel tank (litre)	7500 liter
Freshwater tank (litre)	1500
Blackwater tank (litre)	300 liter
Greywater tank (litre)	580
More info on hull	Planing hull

ACCOMMODATION

Cabins	4
Berths	8
Crew cabin	yes
Crew berths	yes
Interior	Deluxe
Floor	yes
Saloon	yes
Air-conditioning	yes
Dining room	Parquet



DOMINATOR 780S

Galley	yes
Sink	yes
Cooker	yes
Oven	yes
Microwave	yes
Fridge	yes
Freezer	yes
Hot water system	yes
Dishwasher	yes
Ice maker	yes
Owners cabin	yes
Wardrobe	yes
Bathroom	4
Toilet	yes
Wash basin	yes
Shower	yes
Jacuzzi	On the bow
Guest cabin 1	yes
Bathroom	yes
Toilet	yes
Shower	yes
Guest cabin 2	yes
Bathroom	yes
Toilet	yes
Shower	yes
Guest cabin 3	yes
Bathroom	yes
Toilet	yes
Shower	yes
Guest cabin 4	yes
Bathroom	yes
Toilet	yes



DOMINATOR 780S

Shower	yes
Crew cabin(s)	2
Bathroom (crew)	yes
Toilet (crew)	yes
Shower (crew)	yes
Washing machine	yes
Dryer	yes
Flybridge	yes
Wet bar	yes
Extra info	LED lighting in all cabins
Extra info	Underwater lighting

MACHINERY

No of engines	2
Make	MAN
Type	V12 Common Rail
HP	1800
kW	1324.80
Fuel	diesel
Maximum speed (kn)	31
Cruising speed (kn)	26
Range (nm)	300
Engine hours	CA 830
Engine cooling system	yes
Drive	shaft
Gearbox	yes
Bowthruster	Hydraulic
Sternthruster	Hydraulic
Generator	Fisher Panda
Running hours generator	1530 H
Batteries	Gell batteries maintenance free



Watermaker	220 liter
Stabilizers	0-speed

NAVIGATION

Compass	Gyro
Electric compass	2 Simrad
Depth sounder	Simrad
Log	2 Simrad Log
Windset	yes
VHF	2 VHF radios on both helms
Autopilot	Autopilot simrad on both helms
Radar/GPS/plotter	yes
Navigation lights	yes
Searchlight	yes

EQUIPMENT

Bimini	Hydraulic
Cockpit cushions	yes
Bathing platform	Hydraulic swim platform
Boarding ladder	yes
Gangway	yes
Deck crane	On fly 400kg
Life raft	2
Fenders	yes
Spare parts	yes
TV	yes
Satellite	Telephone
Radio	yes
Surround Sound System	yes
Speakers in salon	BOSE Lifestyle 38 home cinema HIFI CD/DVD
Speakers in cabin	BOSE Lifestyle 38 home cinema HIFI CD/DVD in master cabin



DOMINATOR 780S

Extra info

Tender Williams 385 Turbojet (60h).



DOMINATOR 780S



DOMINATOR 780S



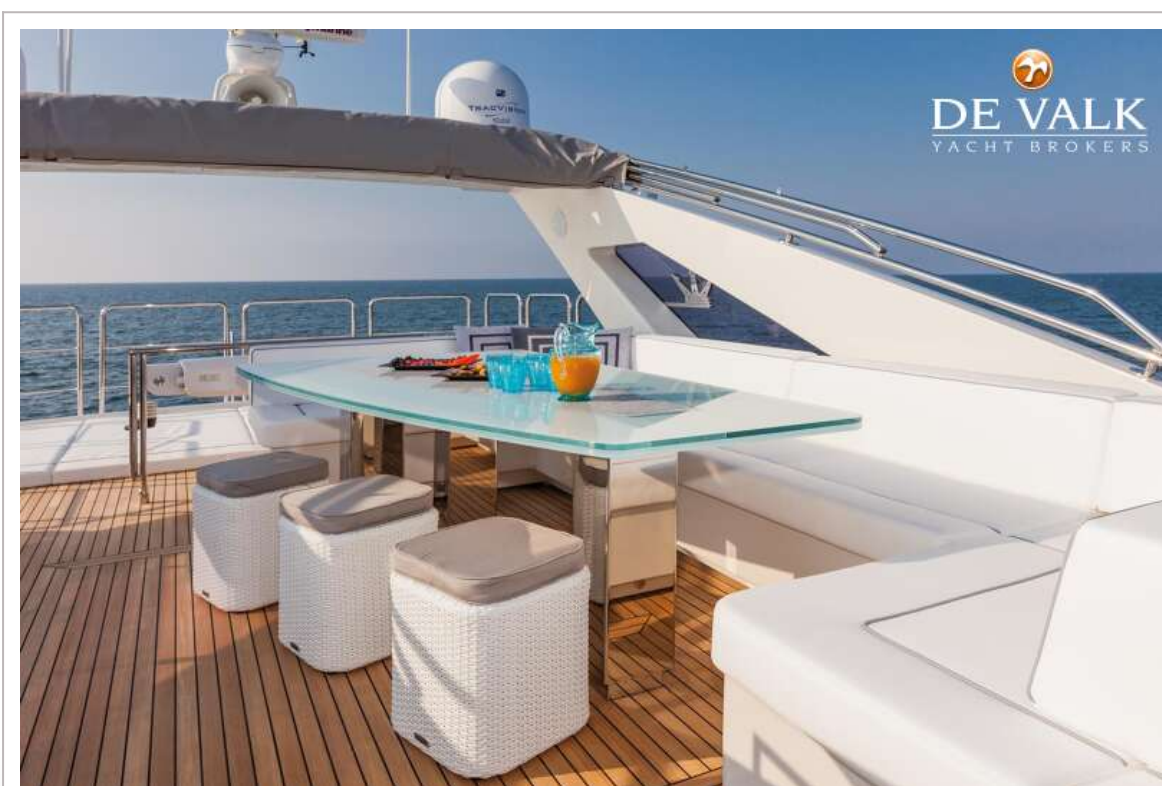
DOMINATOR 780S



DOMINATOR 780S



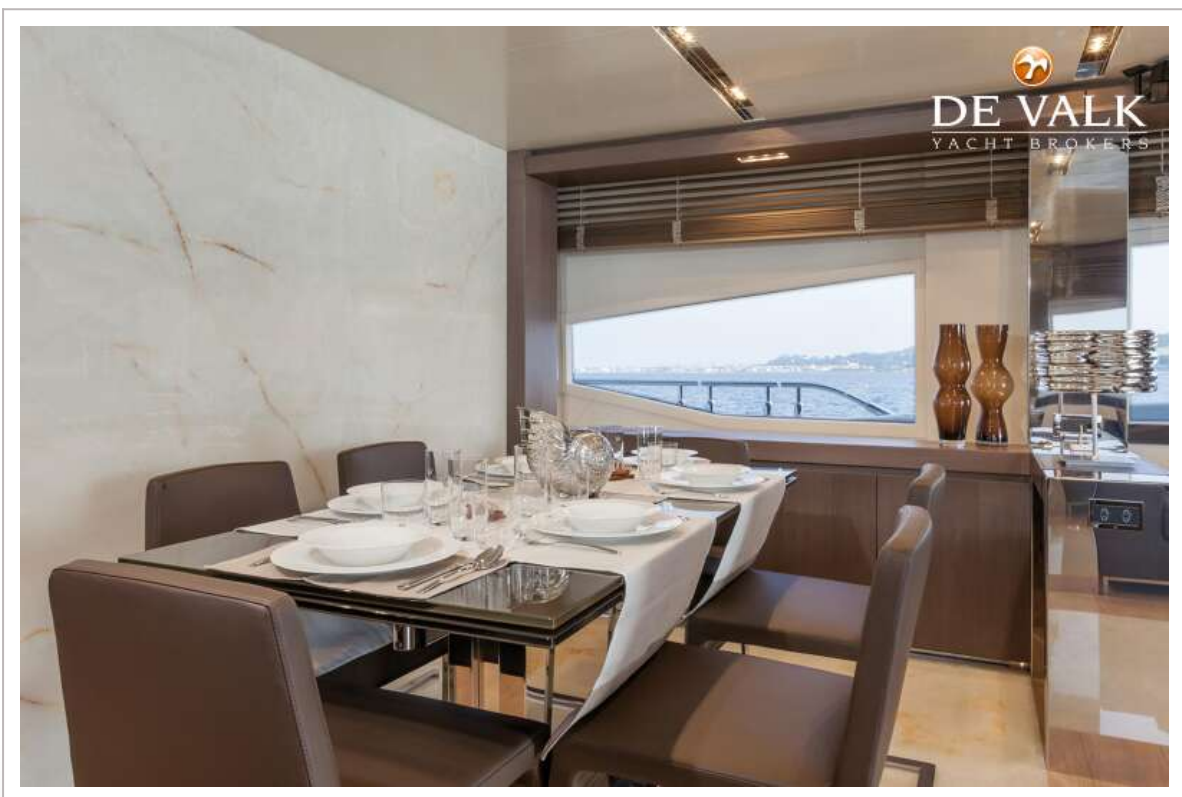
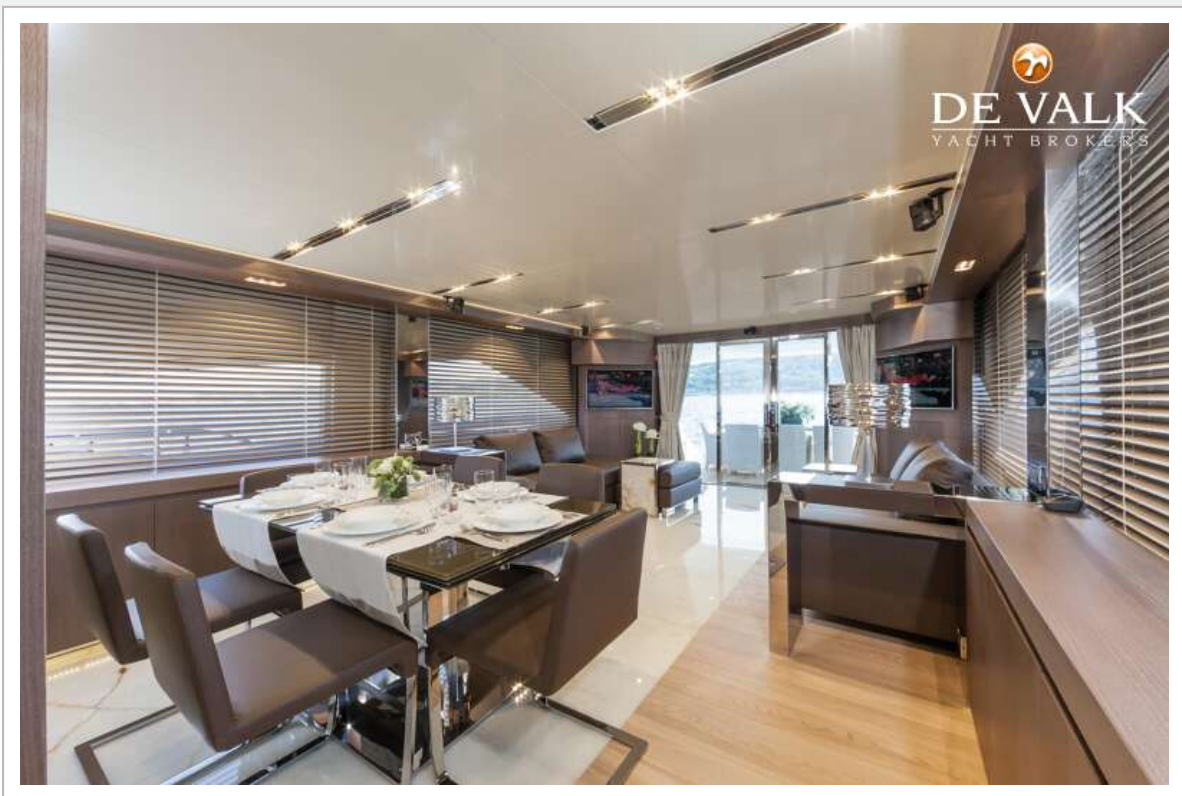
DOMINATOR 780S



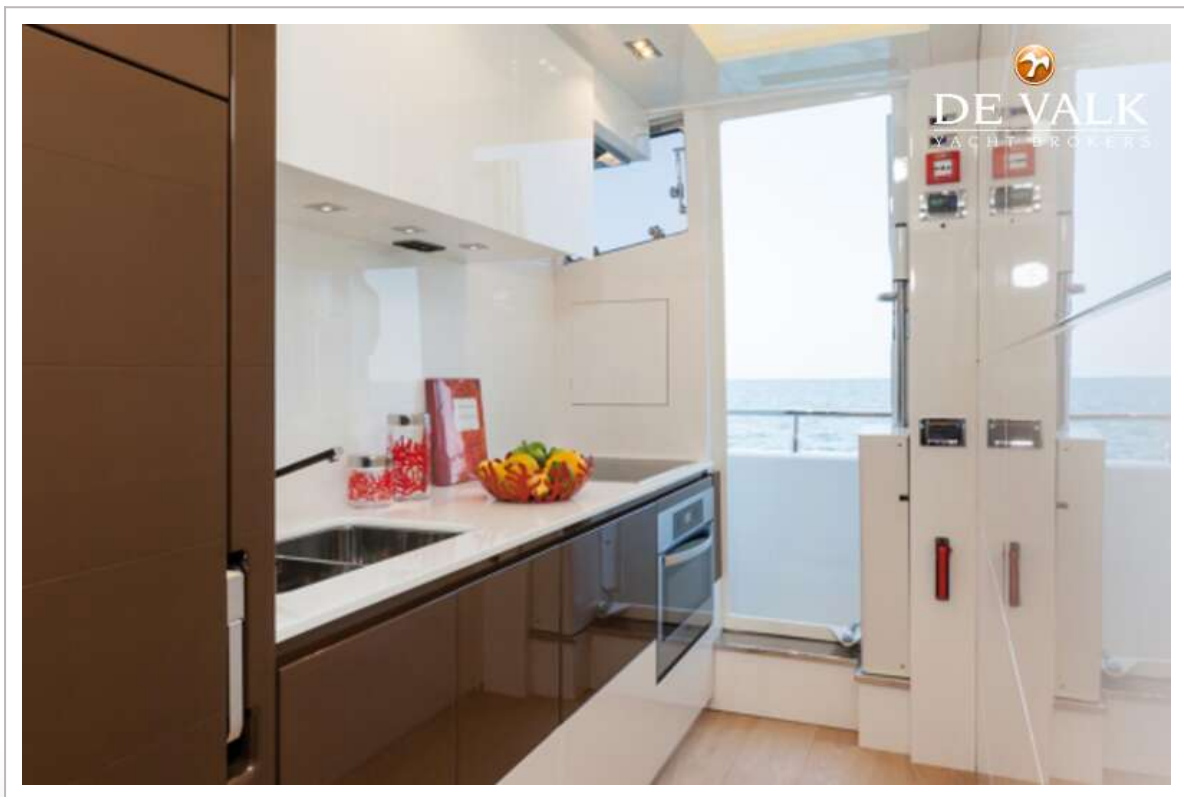
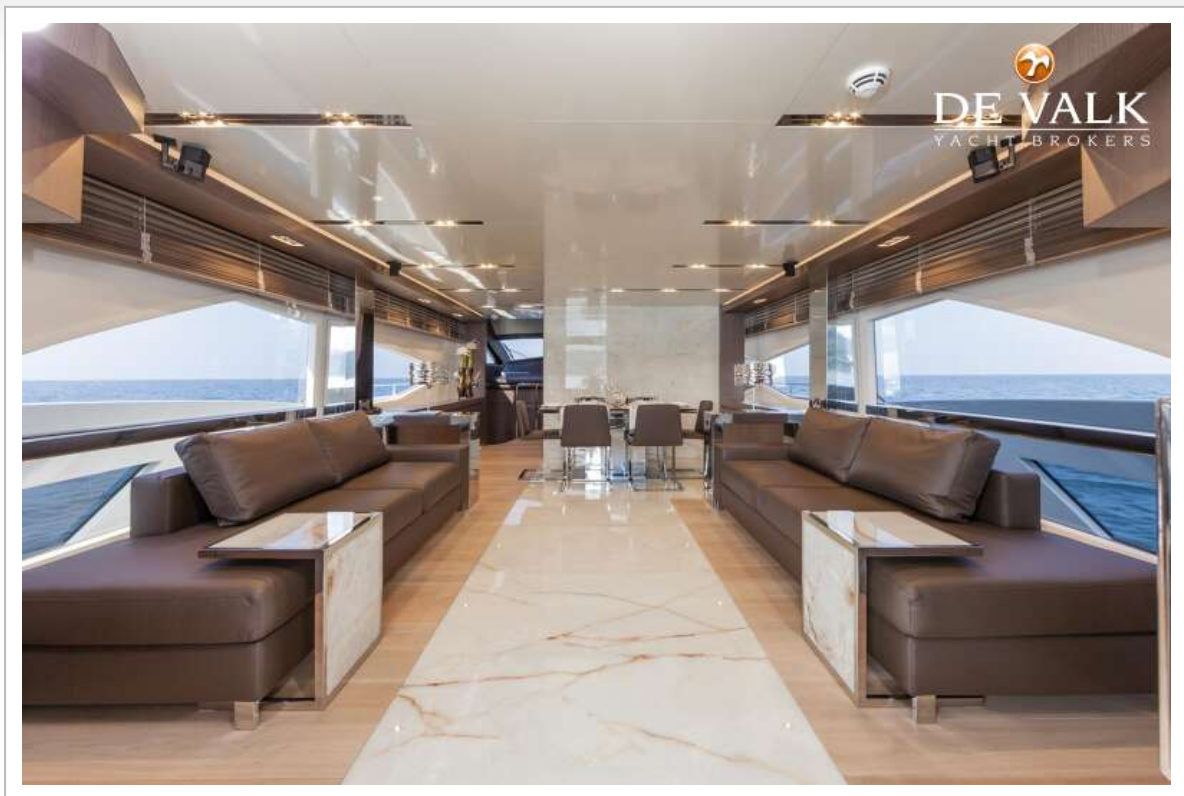
DOMINATOR 780S



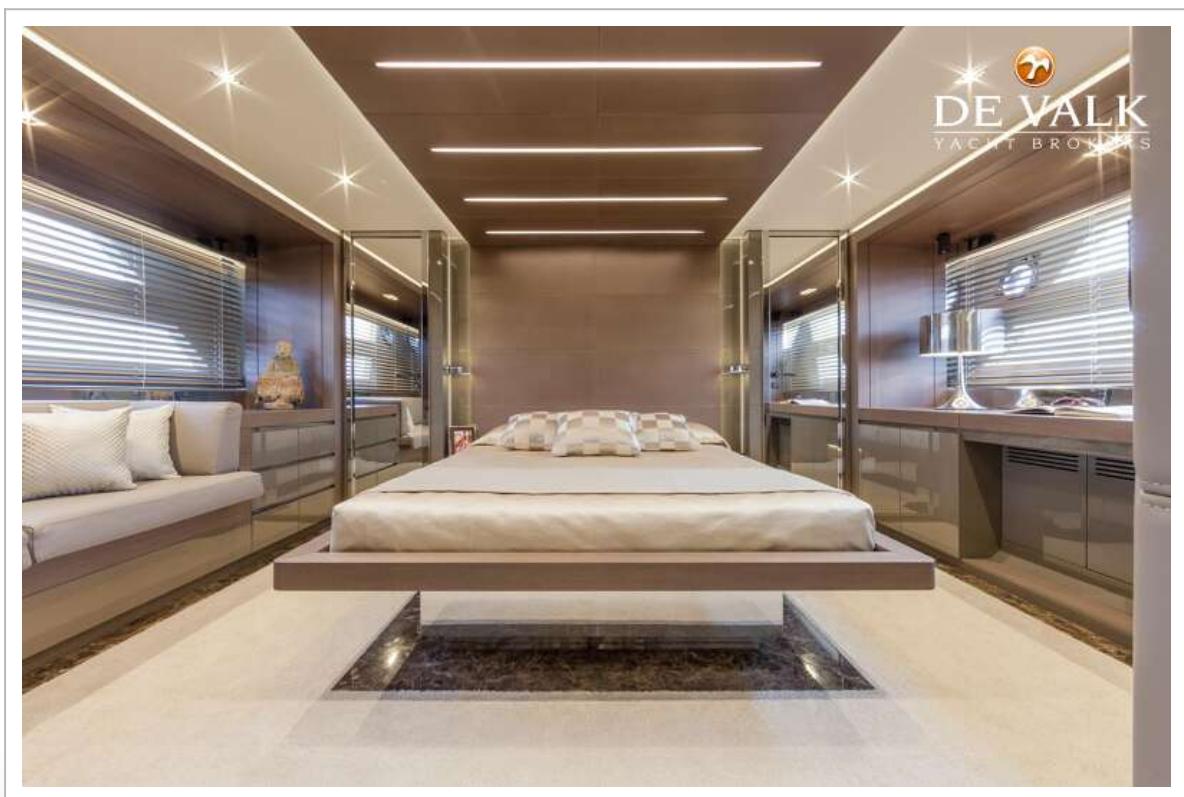
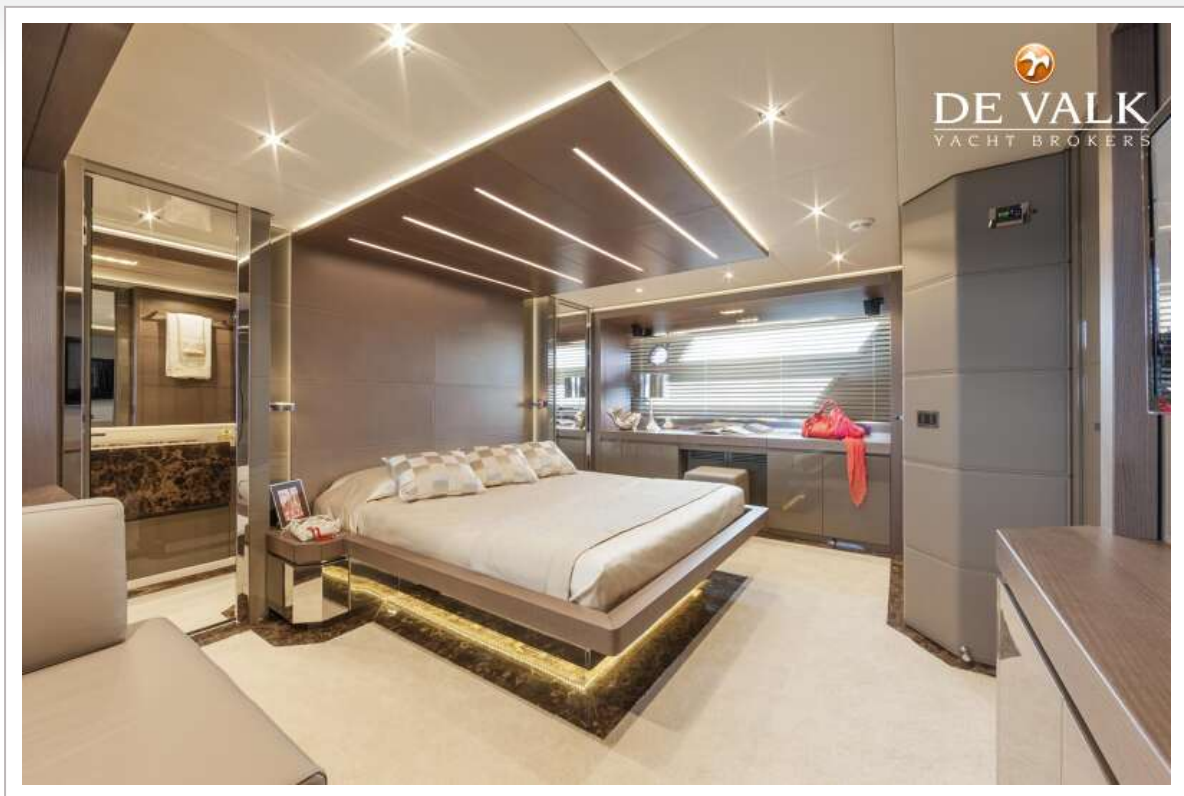
DOMINATOR 780S



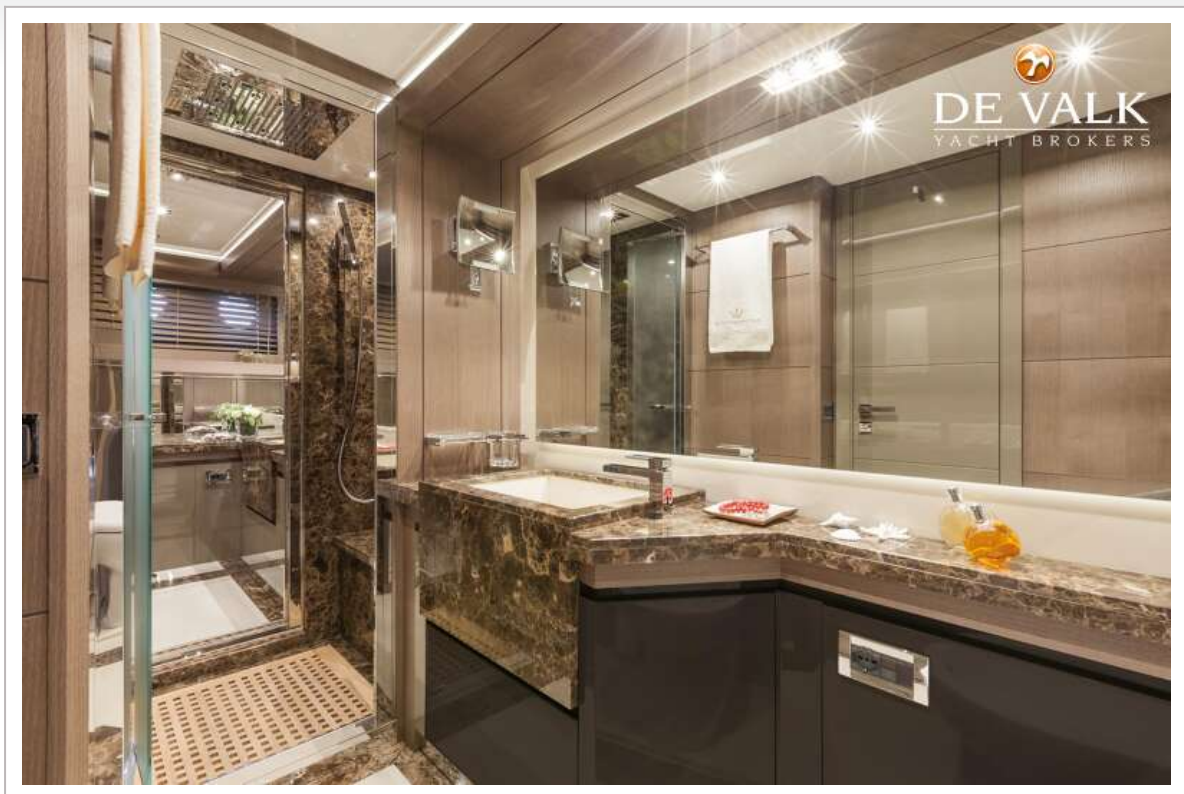
DOMINATOR 780S



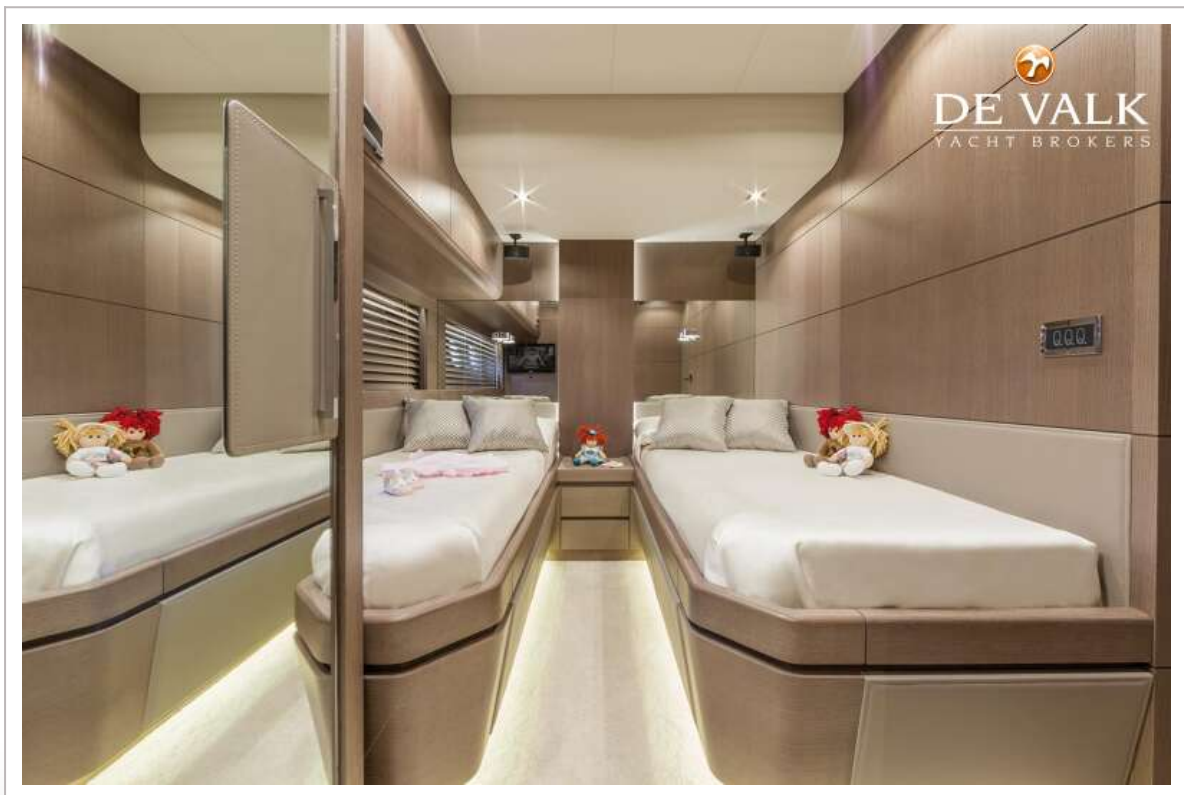
DOMINATOR 780S



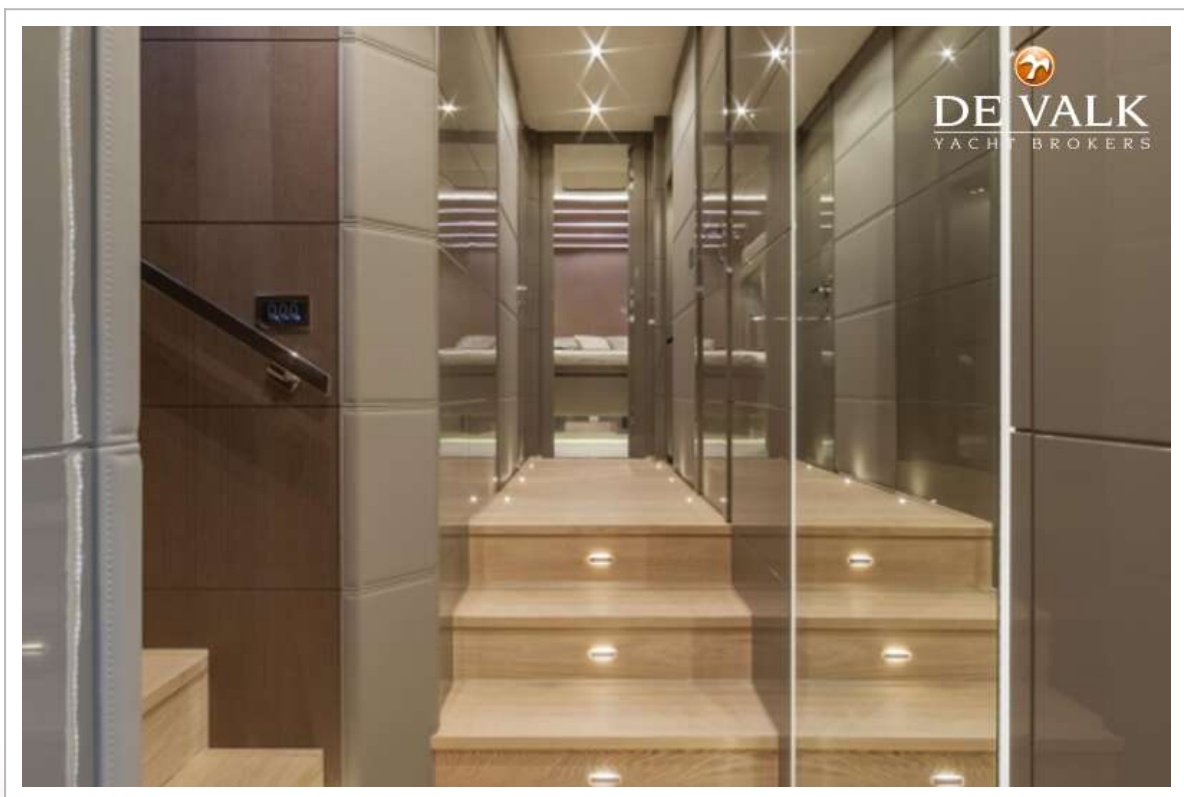
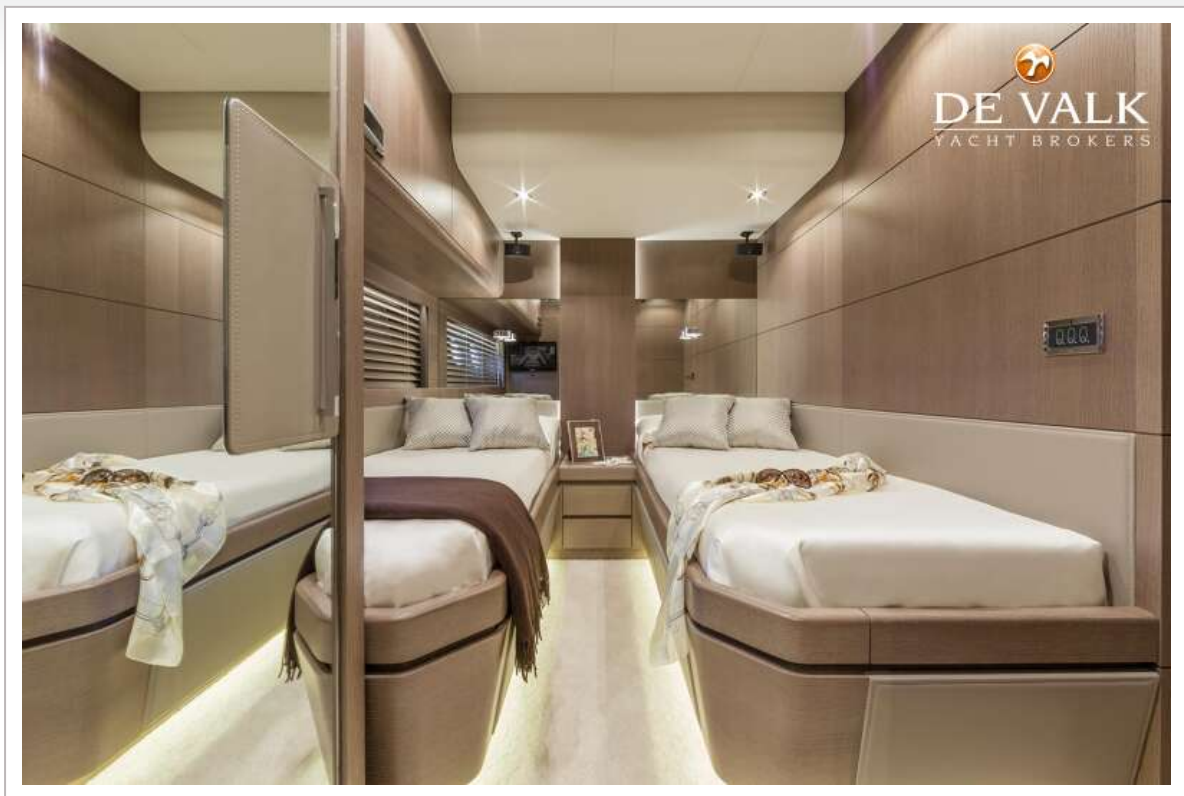
DOMINATOR 780S



DOMINATOR 780S



DOMINATOR 780S



DOMINATOR 780S

