



CUSTOM MARCELO PENNA TRAWLER 70



DE VALK  
YACHT BROKERS

# CUSTOM MARCELO PENNA TRAWLER 70

## BROKER'S COMMENTS

This custom built 70 foot trawler was designed by renowned Spanish naval architect Marcelo Penna and built in Spain. She was designed to offer generous live aboard comfort for long range cruising for up to 8 people plus 2 crew and she has a very spacious interior. Her twin 480hp Volvo Penta engines offer economic cruising as well as reliability and safety. She is CE 'A' rated and is fully built in aluminium. Curious? Then please contact De Valk Zeeland to make an appointment for viewing this trawler in the South of France near the Spanish border.

*Nick Lanting*

## SPECIFICATIONS

<b>Dimensions</b>	21.00 x 5.90 x 1.15 (m)	<b>Builder</b>	Astilleros del Principado
<b>Built</b>	2000	<b>Cabins</b>	4
<b>Material</b>	Aluminium	<b>Berths</b>	8
<b>Engine(s)</b>	2 x Volvo Penta TAM74P EDC diesel	<b>Hp/Kw</b>	2 x 480.00 (hp), 353.28 (kw)
<b>Asking price</b>	€ 650.000 (VAT Paid)	<b>Lying</b>	elsewhere / Not at sales office

## CONTACT

<b>Sales office</b>	De Valk Thuishaven	<b>Telephone</b>	+31 35 5829042
<b>Address</b>	Marinaweg 8 (postal address) 1361 AC Almere NL	<b>E-mail</b>	thuishaven@devalk.nl

## DISCLAIMER

These particulars are given in good faith as supplied but cannot be guaranteed.



# CUSTOM MARCELO PENNA TRAWLER 70

## GENERAL

<b>Model</b>	CUSTOM MARCELO PENNA TRAWLER 70
<b>Type</b>	motor yacht
<b>LOA (m)</b>	21,00
<b>Beam (m)</b>	5,90
<b>Draft (m)</b>	1,15
<b>Air draft (m)</b>	7,78
<b>Air draft min (m)</b>	5,82
<b>Headroom (m)</b>	2,08
<b>Year built</b>	2000
<b>Launched</b>	2001
<b>Builder</b>	Astilleros del Principado
<b>Country</b>	Spain
<b>Designer</b>	Marcelo Penna
<b>Displacement (t)</b>	45
<b>CE norm</b>	A
<b>Hull material</b>	aluminium
<b>Hull colour</b>	blue
<b>Hull thickness (mm)</b>	7
<b>Hull shape</b>	hard chine
<b>Superstructure material</b>	aluminium
<b>Superstructure (mm)</b>	4
<b>Deck plate thickness (mm)</b>	4
<b>Deck material</b>	aluminium
<b>Deck finish</b>	teak
<b>Superstructure deck finish</b>	non-skid paint
<b>Cockpit deck finish</b>	teak
<b>Antifouling (year)</b>	2023-03
<b>Window frame</b>	aluminium
<b>Window material</b>	tempered glass
<b>Deckhatch</b>	yes



# CUSTOM MARCELO PENNA TRAWLER 70

Portholes	aluminium
Insulation	In hull
Flybridge	yes
Flybridge cockpit cover	yes
Flybridge suncover	yes
Radar arch	yes
Fuel tank (litre)	aluminium 2850, integrated in hull
Fuel tank 2 (litre)	aluminium 2850, integrated in hull
Level indicator (fuel tank)	yes
Freshwater tank (litre)	aluminium 1500, integrated in hull
Level indicator (freshwater)	yes
Blackwater tank (litre)	aluminium 400, integrated in hull
Level indicator (blackwater)	yes
Blackwater tank extraction	deck extraction + pump
Greywater tank (litre)	aluminium 400, integrated in hull
Level indicator (greywater)	yes
Wheel steering	hydraulic
Inside helm position	yes
Flybridge helm position	yes
More info on paintwork	Original paint, new complete paintjob is appr. EUR 100.000
Extra info	yes

## ACCOMMODATION

Cabins	4
Berths	8
Crew cabin	yes
Crew berths	2
Interior	cherry
Floor	wood
Open cockpit	yes
Pilot house	yes



# CUSTOM MARCELO PENNA TRAWLER 70

Saloon	yes
Headroom saloon (m)	2.08
Heating	Through air conditioning system
Air-conditioning	reverse cycle airco Climma, 36.000 BTU & 45.000 BTU
Chart table	yes
Dinette	yes
Sliding door to cockpit	yes
Galley	yes
Countertop	granite
Sink	stainless steel 2 x
Cooker	electric Bosch 4-burner
Oven	yes
Extractor	yes
Microwave	yes
Fridge	Hotpoint full size
Wine cooler	In crew cabin
Hot water system	220V + engine
Water pressure system	electrical
Dishwasher	Bosch
Crockery	yes
Owners cabin	French bed Mid ships
Bed length (m)	2,00 x 1,40
Wardrobe	hanging/drawers/shelves
Bathroom	en suite
Toilet	In bathroom
Toilet system	electric
Wash basin	in the bathroom
Shower	In bathroom
Bath tub	yes
Guest cabin 1	bunk bed Port
Bed length (m)	2,00 x 0,70 (2 x)
Wardrobe	hanging/drawers/shelves



# CUSTOM MARCELO PENNA TRAWLER 70

<b>Bathroom</b>	en suite
<b>Toilet</b>	In bathroom
<b>Toilet system</b>	electric
<b>Wash basin</b>	in the bathroom
<b>Shower</b>	In bathroom
<b>Guest cabin 2</b>	double bed Forward port
<b>Bed length (m)</b>	1,80 x 1,20
<b>Wardrobe</b>	hanging/drawers/shelves
<b>Bathroom</b>	en suite
<b>Toilet</b>	In bathroom
<b>Toilet system</b>	electric
<b>Wash basin</b>	in the bathroom
<b>Shower</b>	In bathroom
<b>Guest cabin 3</b>	double bed Forward starboard
<b>Bed length (m)</b>	1,80 x 1,20
<b>Wardrobe</b>	hanging/drawers/shelves
<b>Bathroom</b>	En suite
<b>Toilet</b>	In bathroom
<b>Toilet system</b>	electric
<b>Wash basin</b>	in the bathroom
<b>Shower</b>	In bathroom
<b>Crew cabin(s)</b>	Currenty converted to storage
<b>Bathroom (crew)</b>	yes
<b>Toilet (crew)</b>	yes
<b>Wash basin</b>	yes
<b>Shower (crew)</b>	yes
<b>Washing machine</b>	Bosch
<b>Dryer</b>	Bosch
<b>Flybridge</b>	yes
<b>Wet bar</b>	yes



# CUSTOM MARCELO PENNA TRAWLER 70

## MACHINERY

No of engines	2
Make	Volvo Penta
Type	TAMD74P EDC
HP	480
kW	353.28
Fuel	diesel
Year installed	2001
Maximum speed (kn)	17
Cruising speed (kn)	12
Engine hours	940
Engine cooling system	freshwater heat exchanger
Drive	shaft
Engine controls	electrical Volvo Penta EDC
Gearbox	hydraulic Both with PTO
Bowthruster	hydraulic Vetus
Sternthruster	hydraulic Vetus
Exhaust	watercooled
Propeller type	fixed
Propeller shaft material	stainless steel
Shaft lubrication	yes
Manual bilge pump	yes
Electric bilge pump	yes
Bilge alarm	Bilge water evacuation systems
Electrical installation	24 V & 220 V
Generator	silent separator Onan
Running hours generator	Appr. 900
Generator 2	silent separator Kohler
Running hours generator 2	Appr. 600
Batteries	yes
Start battery	yes



# CUSTOM MARCELO PENNA TRAWLER 70

Service battery	yes
Generator battery	yes
Battery monitor	yes
Battery charger	3 x
Inverter	Victron
Diode battery combiners	yes
Shorepower	with cable
Insulation transformer	yes
Watermaker	120 l/h
Stabilizers	fin Rodriquez

## NAVIGATION

Compass	Suunto
Compass on flybridge	yes
Electric compass	In autopilot
Depth sounder/log	Raymarine ST60 TriData
Windset	Raymarine ST60 Wind
Repeater	yes
VHF	3 x
Autopilot	Raymarine ST7000+
Rudder angle indicator	yes
Radar	yes
Plotter/GPS	yes
Radar/GPS/plotter	No, original one has been removed
AIS receiver	yes
Navigation lights	yes
Searchlight	yes

## EQUIPMENT

Cockpit cover	yes
Dodger	On flybridge



# CUSTOM MARCELO PENNA TRAWLER 70

Cockpit cushions	yes
Cockpit table	yes
Cockpit chairs	yes
Bathing platform	yes
Boarding ladder	stainless steel
Transom door	yes
Gangway	Opacmare
Anchor	Bruce 60 kg
Anchor chain	100 m galvanized
Anchor 2	Bruce 50 kg
Anchor chain	100m galvanized
Windlass	electrical
Dinghy	rigid inflatable Zodia 4,20 m
Outboard	Honda 50 hp
Deck crane	hydraulic
Sea railing	wood
Railing side opening gates	yes
Pulpit	yes
Life raft	yes
Life raft (pers)	10
Last life raft survey	Unknown
Lifejackets	yes
Horn	electric
Fenders	yes
Mooring lines	yes
TV	yes
Radio-cd player	yes
Cockpit speakers	yes
Speakers in salon	yes
Clock - barometer	yes
Fire extinguisher	yes
Latest extinguisher survey	2022



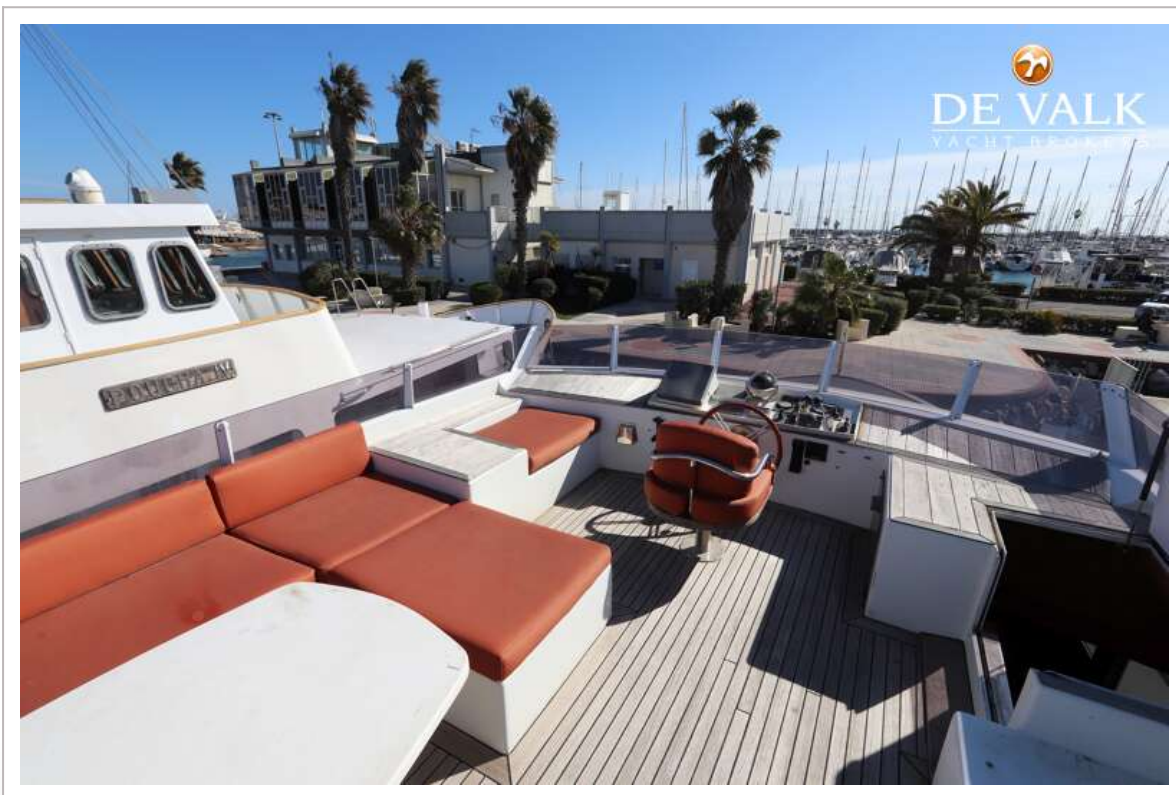
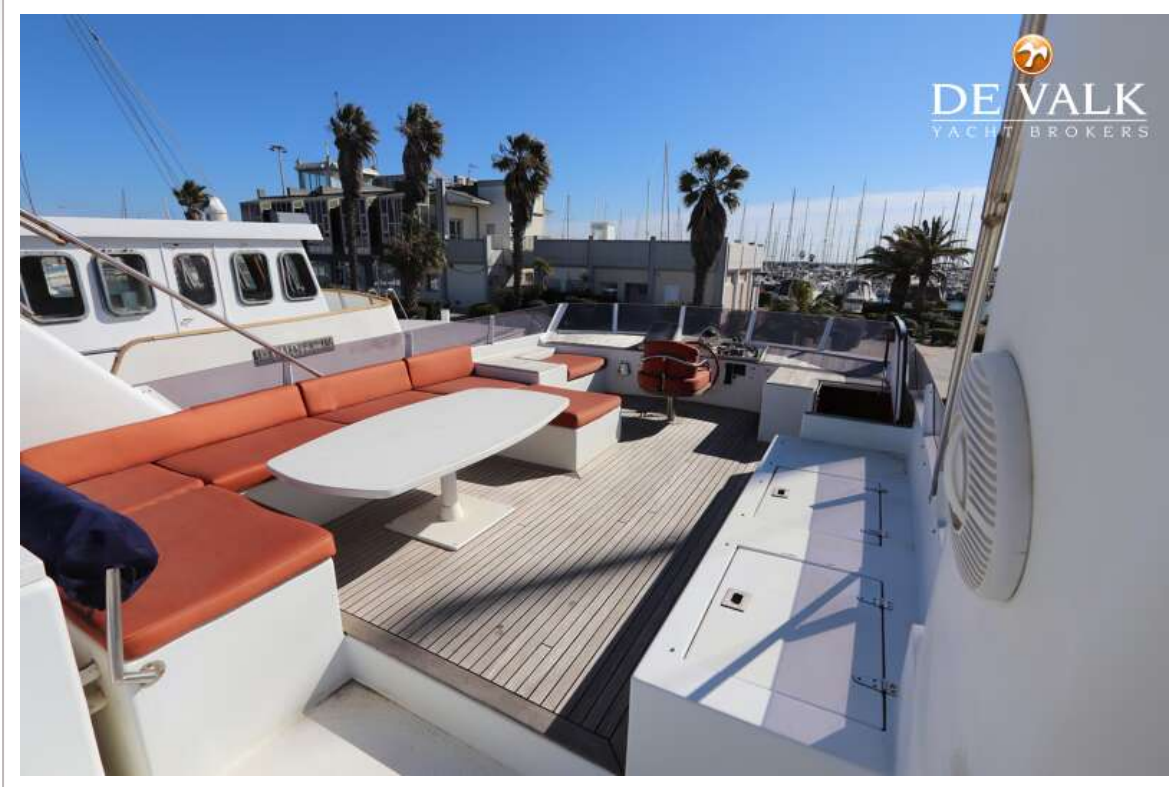
Extinguisher in engine room	yes
Auto extinguisher system	yes



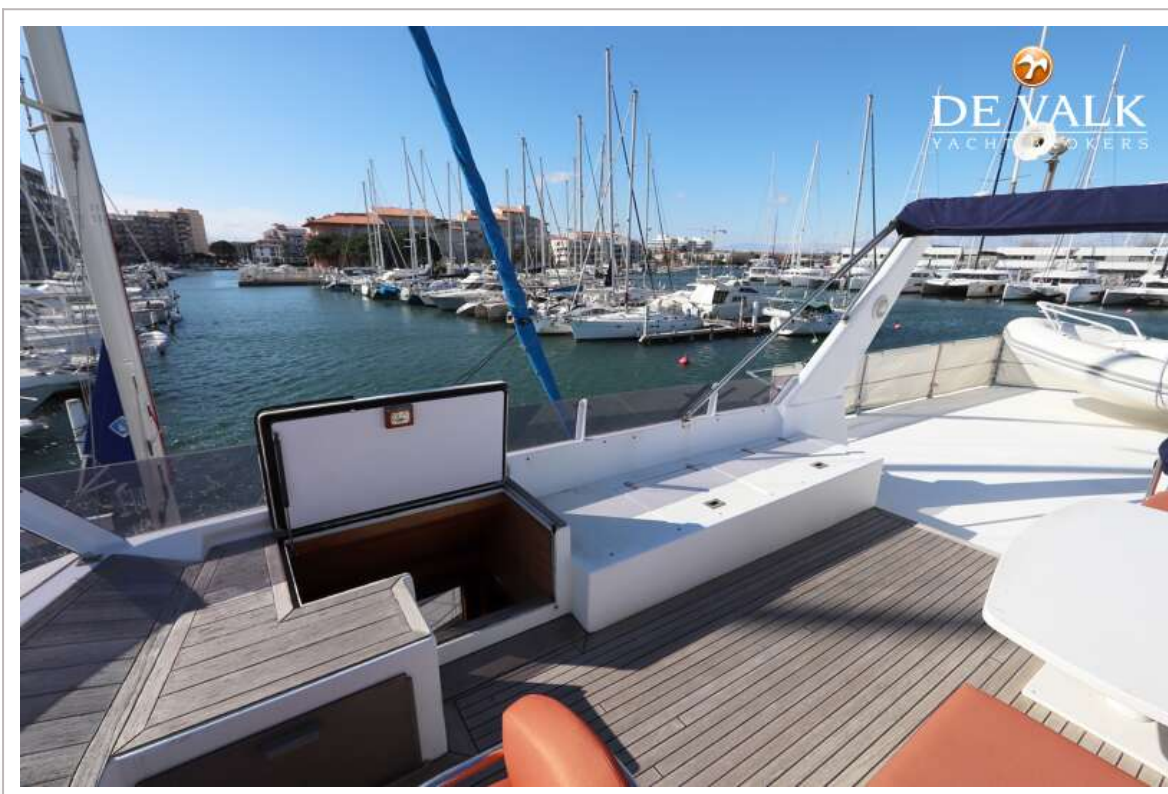
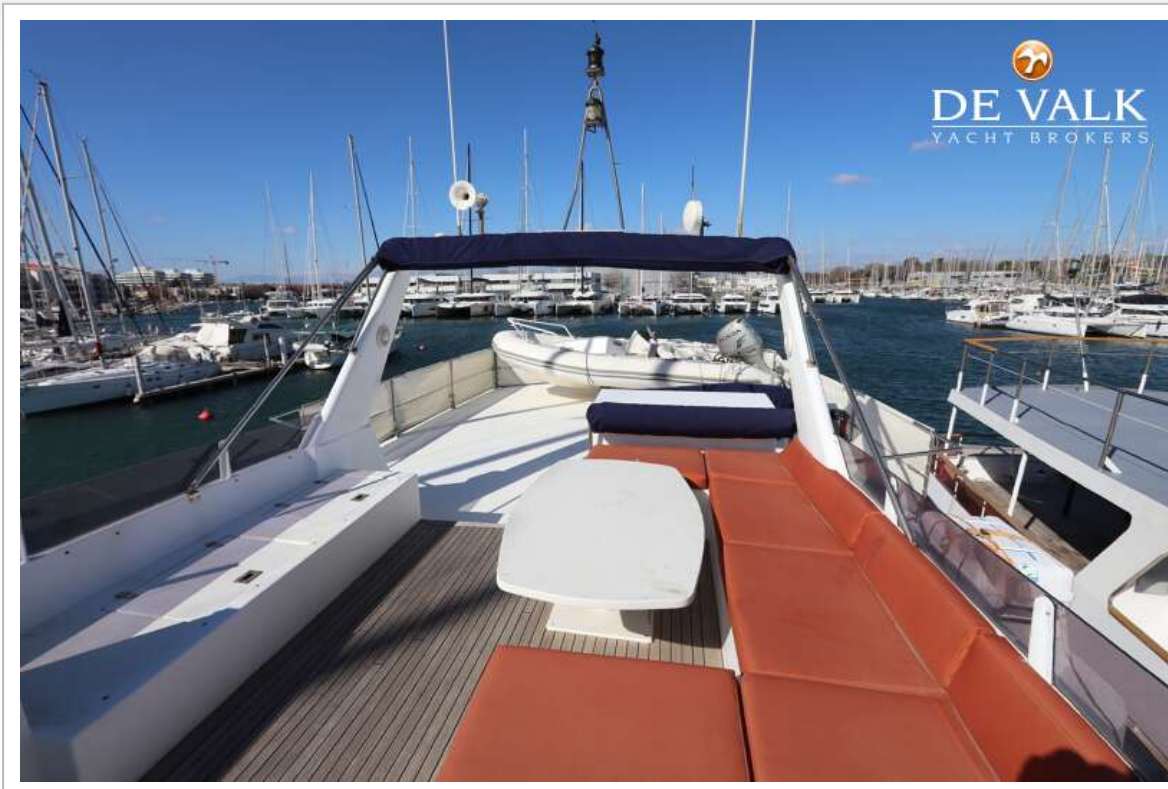
# CUSTOM MARCELO PENNA TRAWLER 70



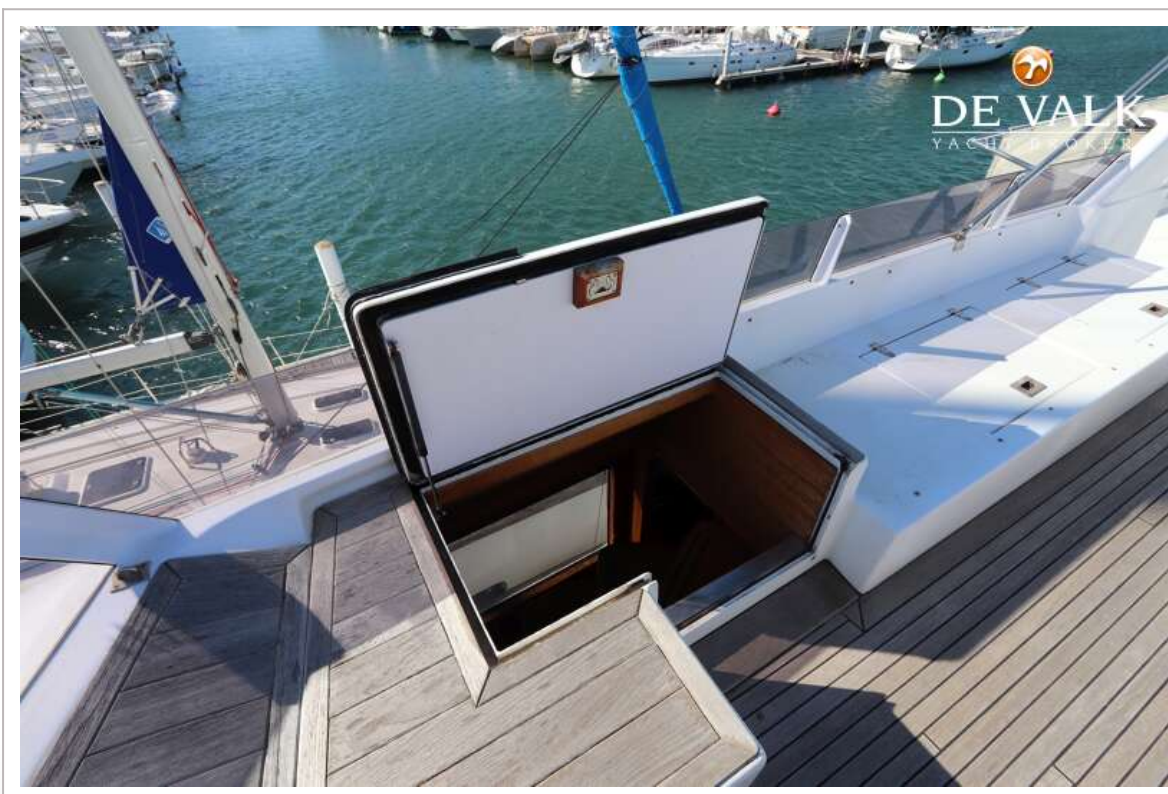
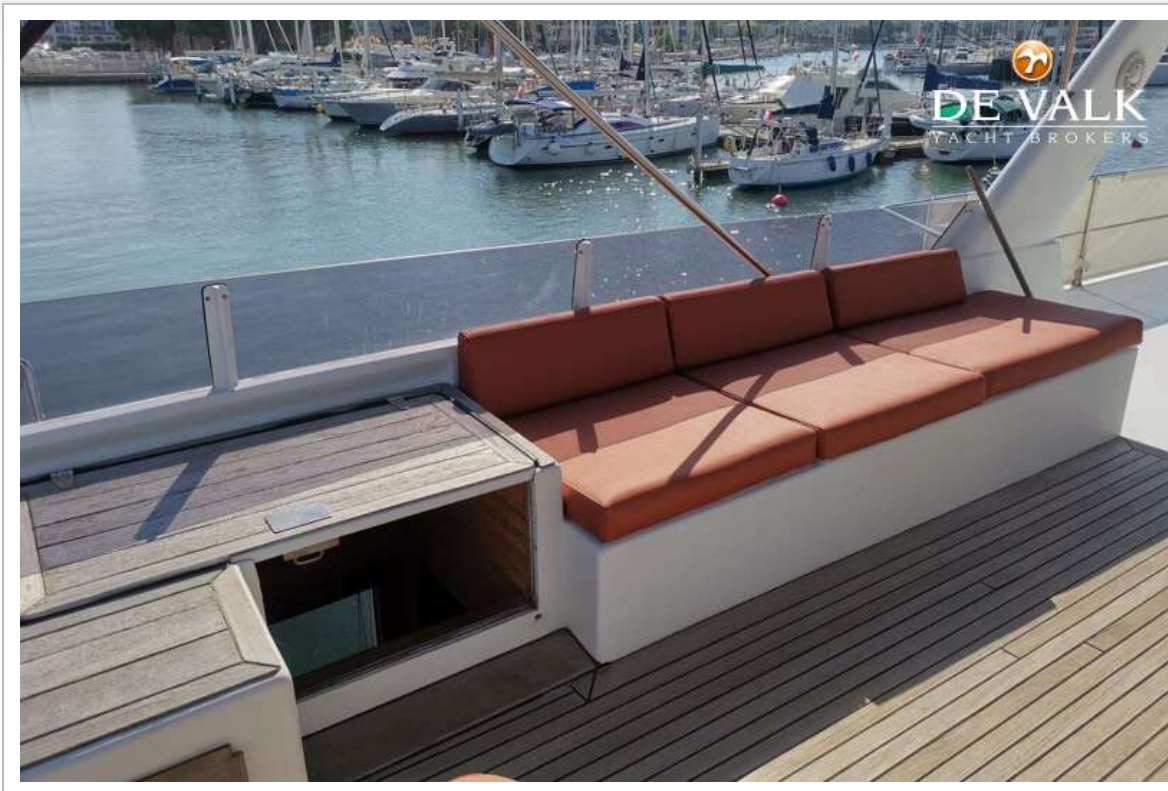
# CUSTOM MARCELO PENNA TRAWLER 70



# CUSTOM MARCELO PENNA TRAWLER 70



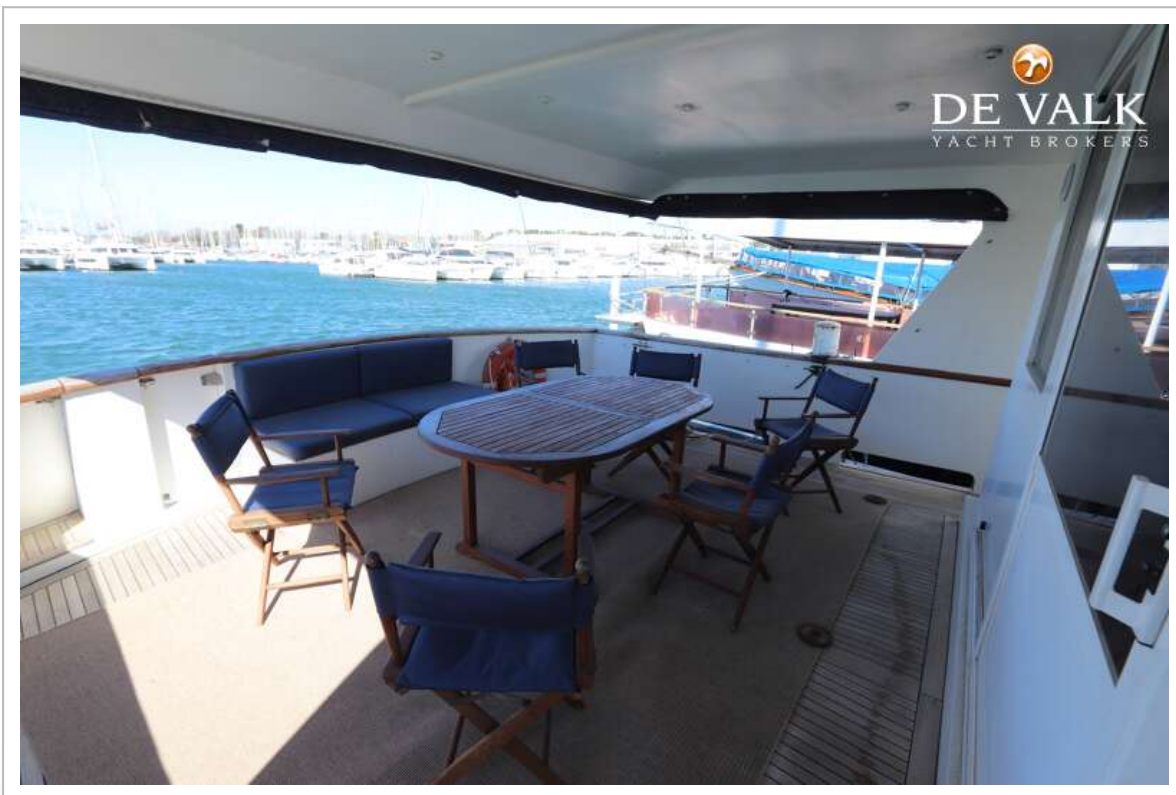
# CUSTOM MARCELO PENNA TRAWLER 70



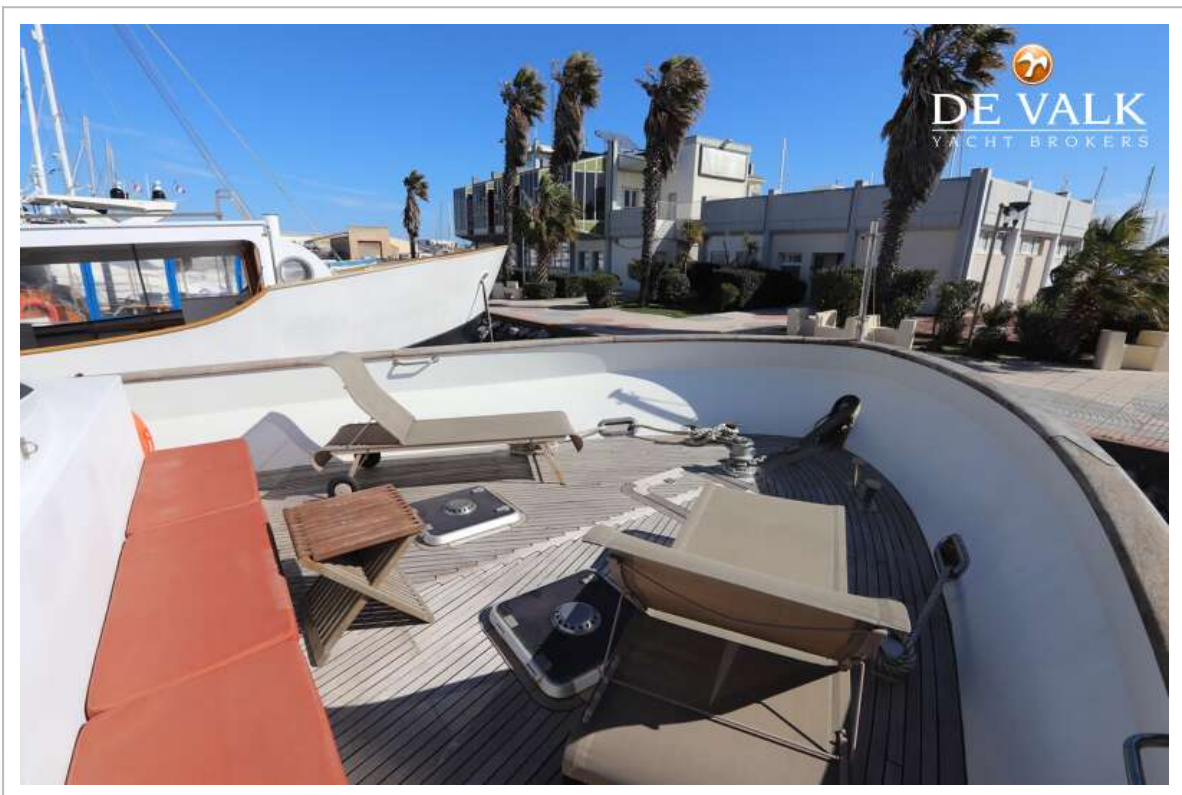
# CUSTOM MARCELO PENNA TRAWLER 70



# CUSTOM MARCELO PENNA TRAWLER 70



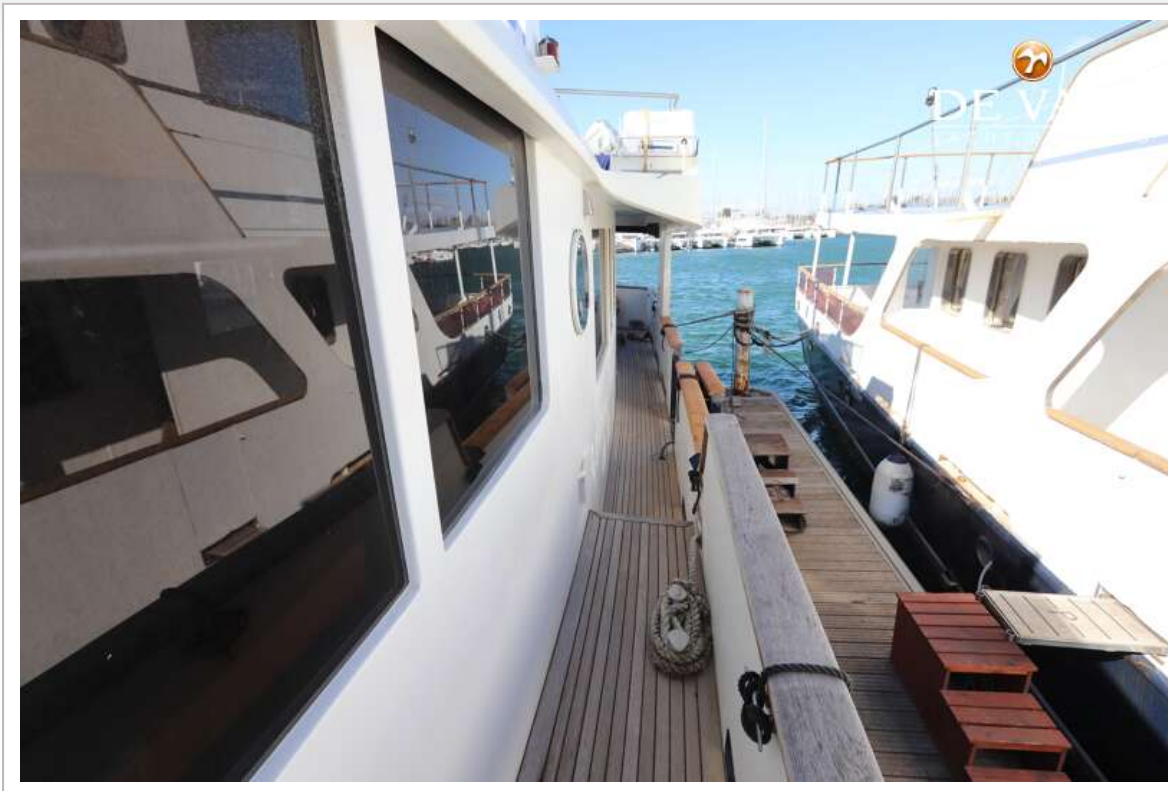
# CUSTOM MARCELO PENNA TRAWLER 70



# CUSTOM MARCELO PENNA TRAWLER 70



# CUSTOM MARCELO PENNA TRAWLER 70



# CUSTOM MARCELO PENNA TRAWLER 70



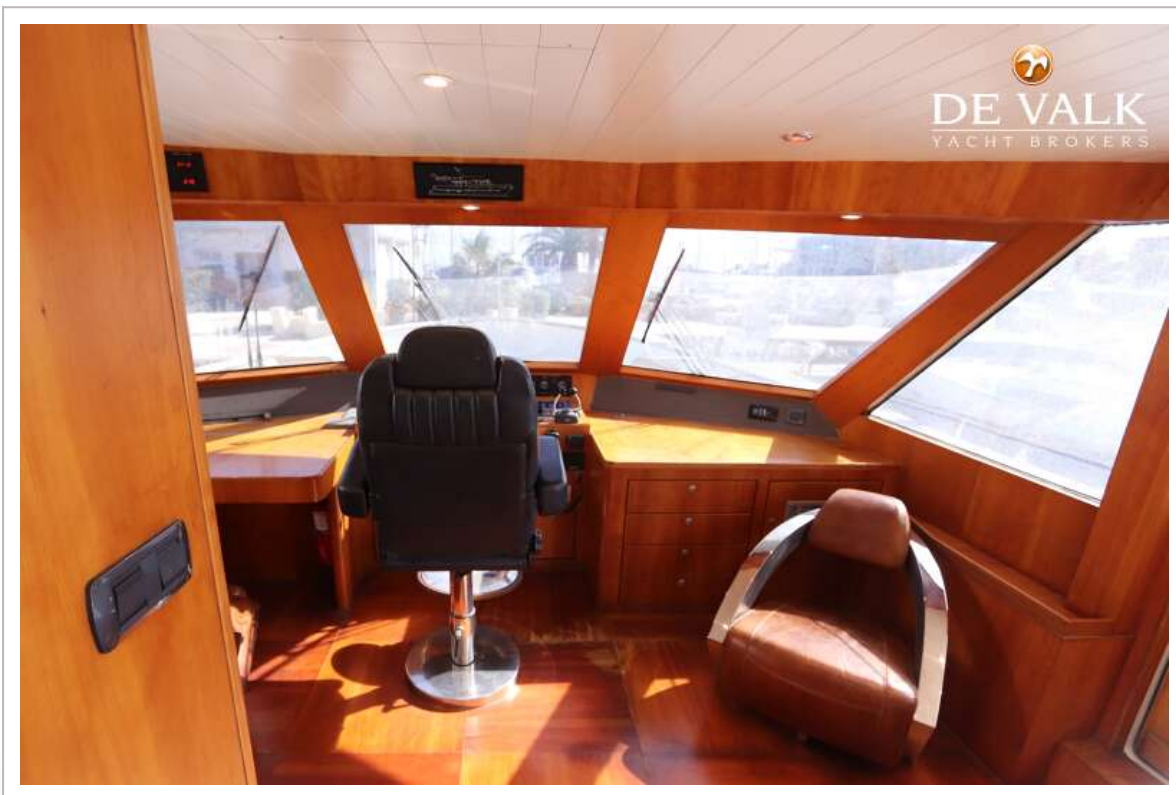
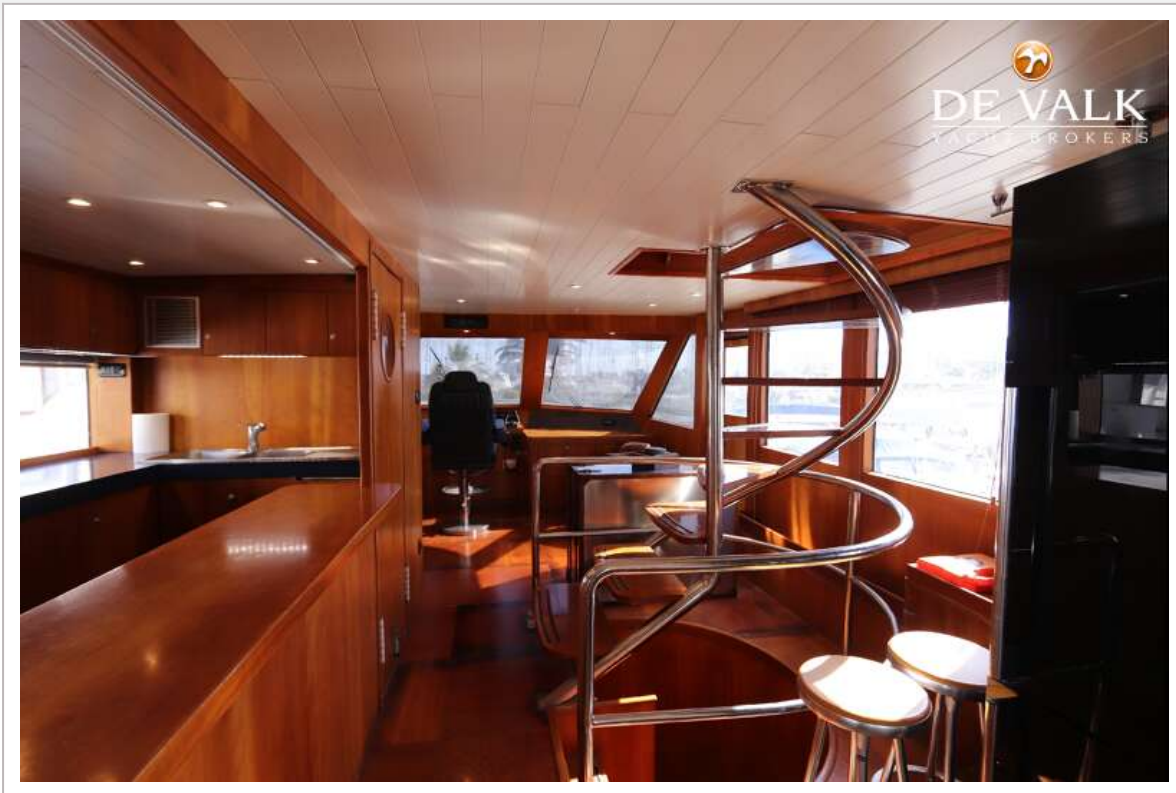
# CUSTOM MARCELO PENNA TRAWLER 70



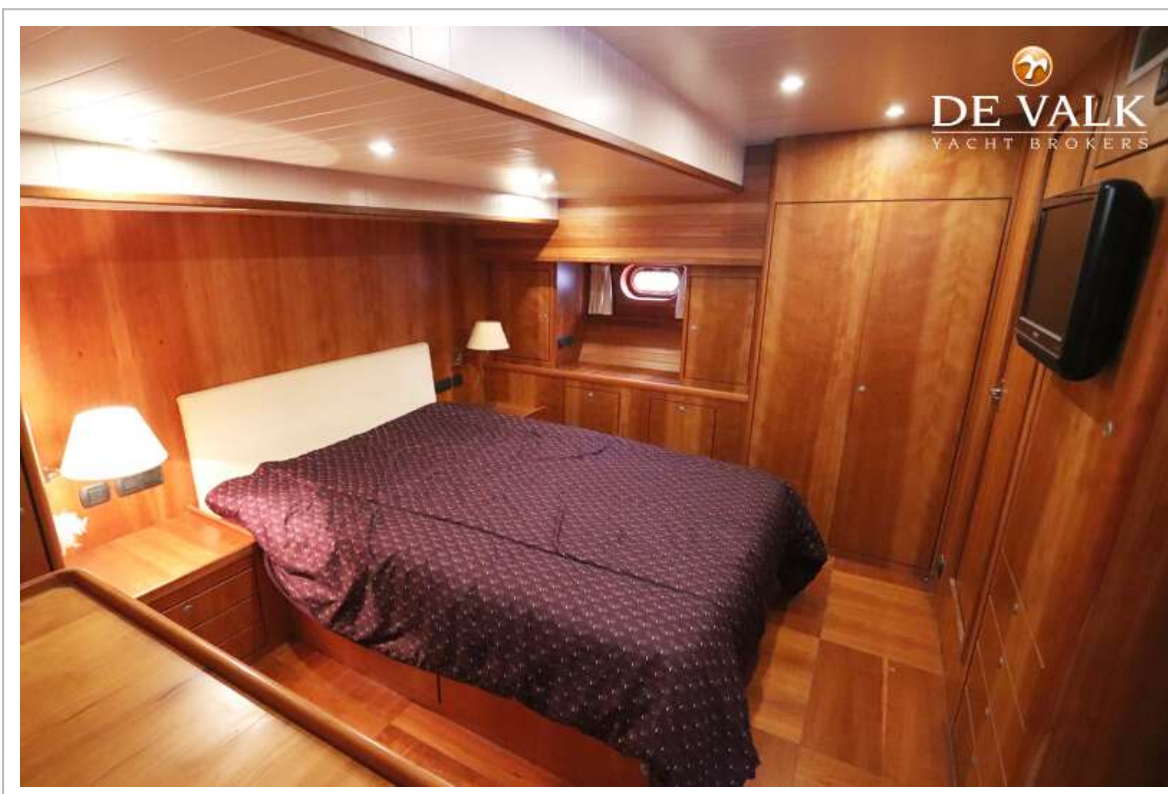
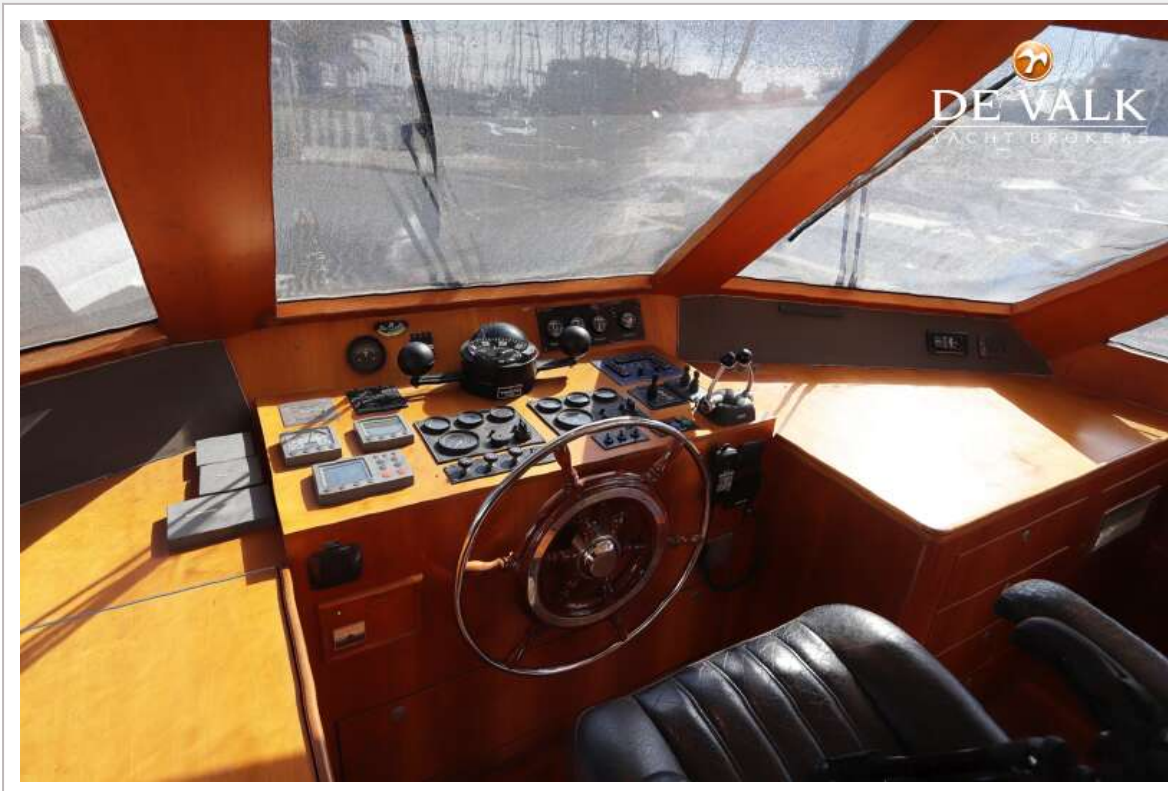
# CUSTOM MARCELO PENNA TRAWLER 70



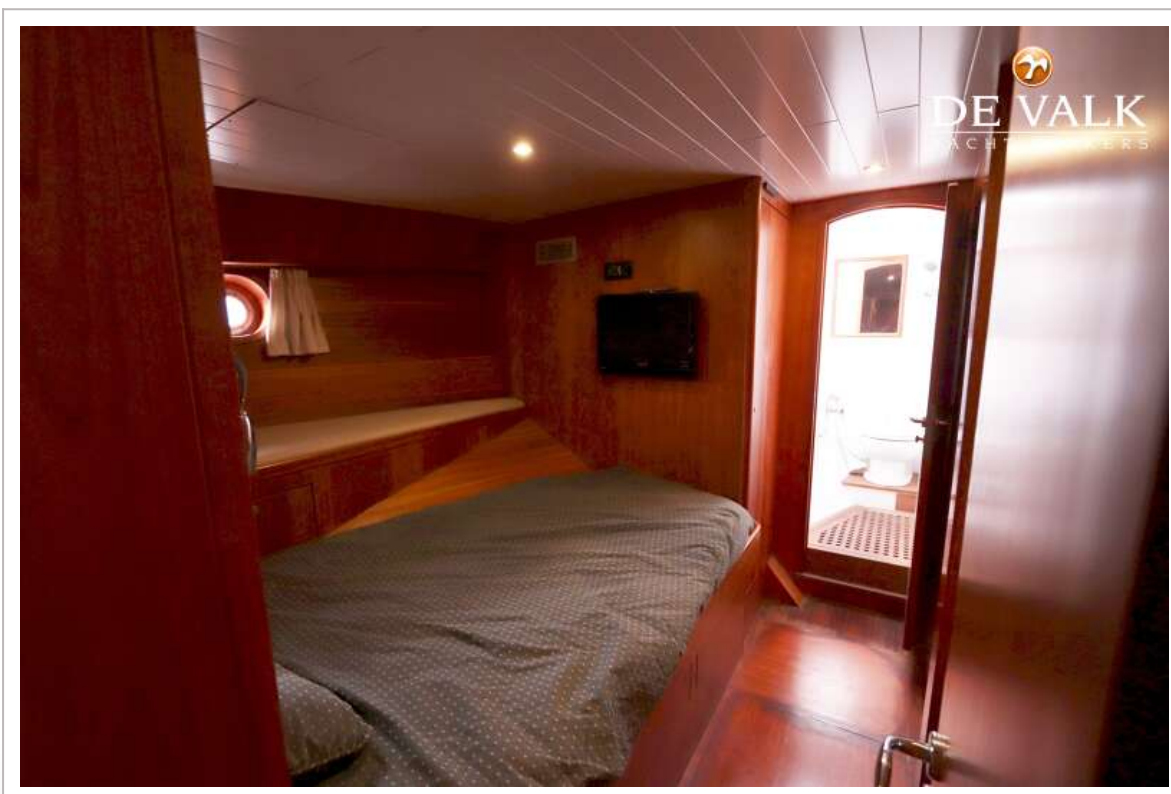
# CUSTOM MARCELO PENNA TRAWLER 70



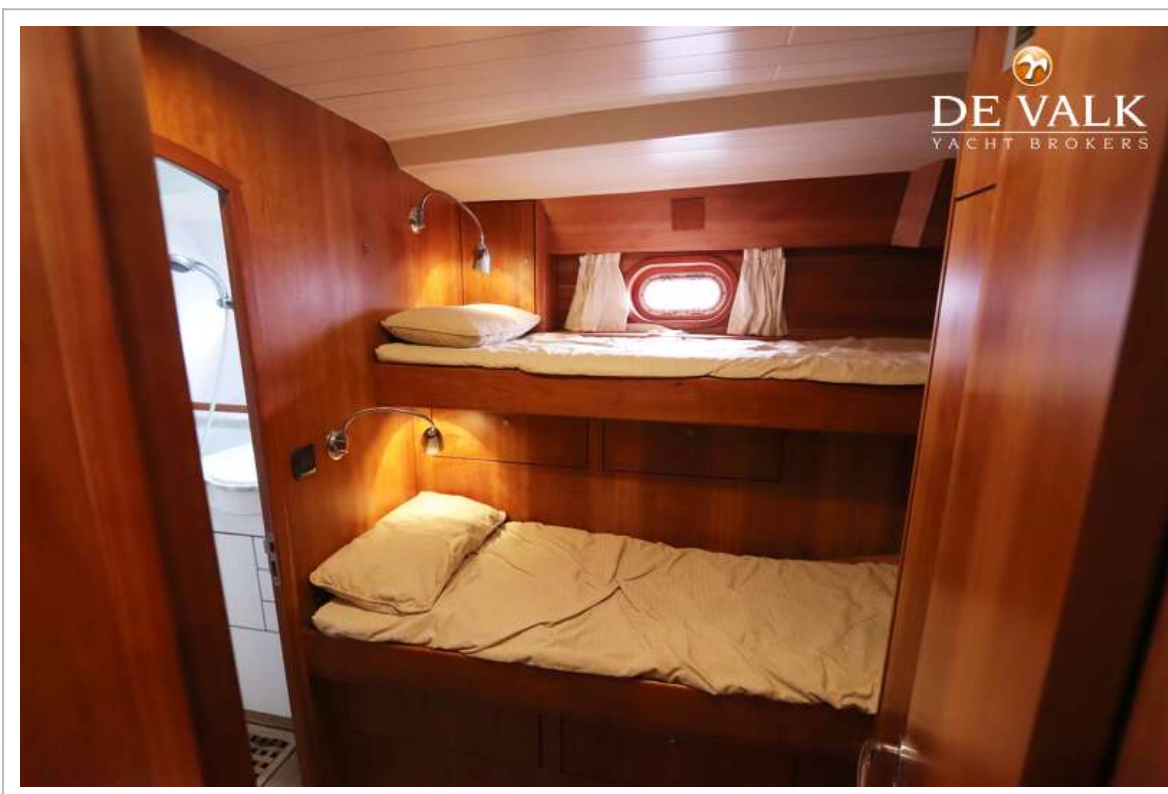
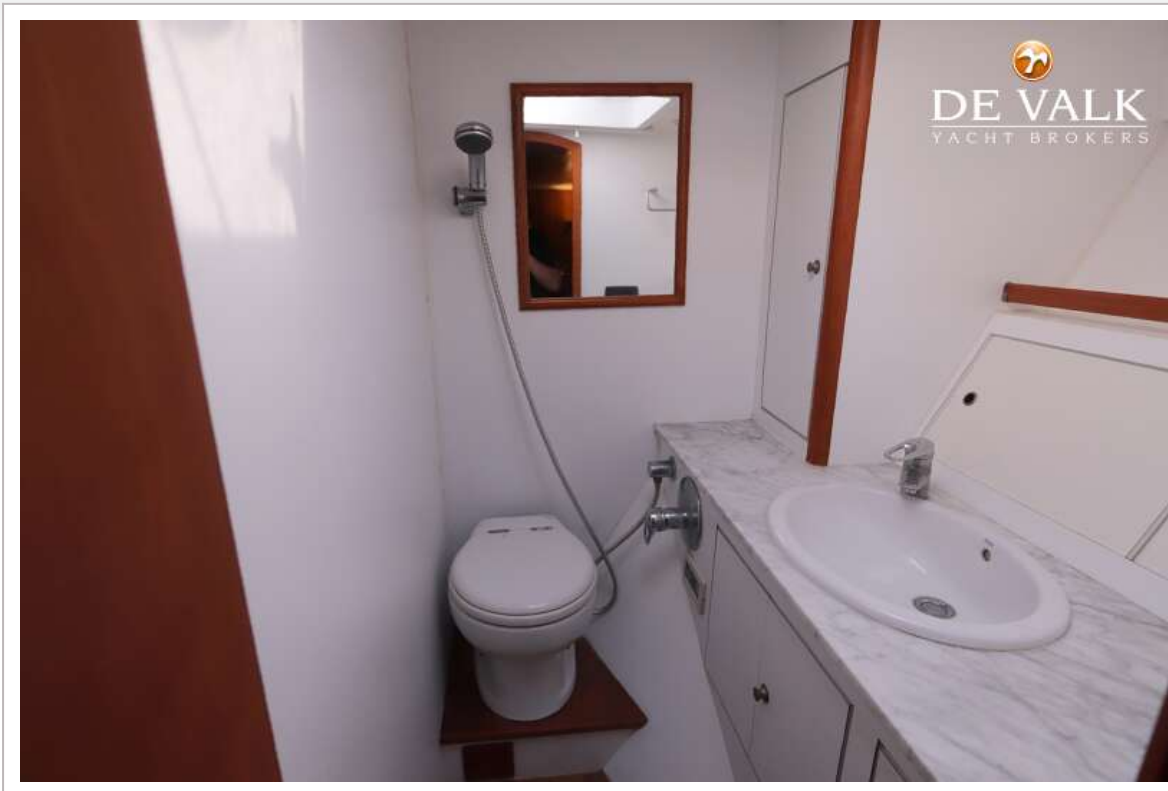
# CUSTOM MARCELO PENNA TRAWLER 70



# CUSTOM MARCELO PENNA TRAWLER 70



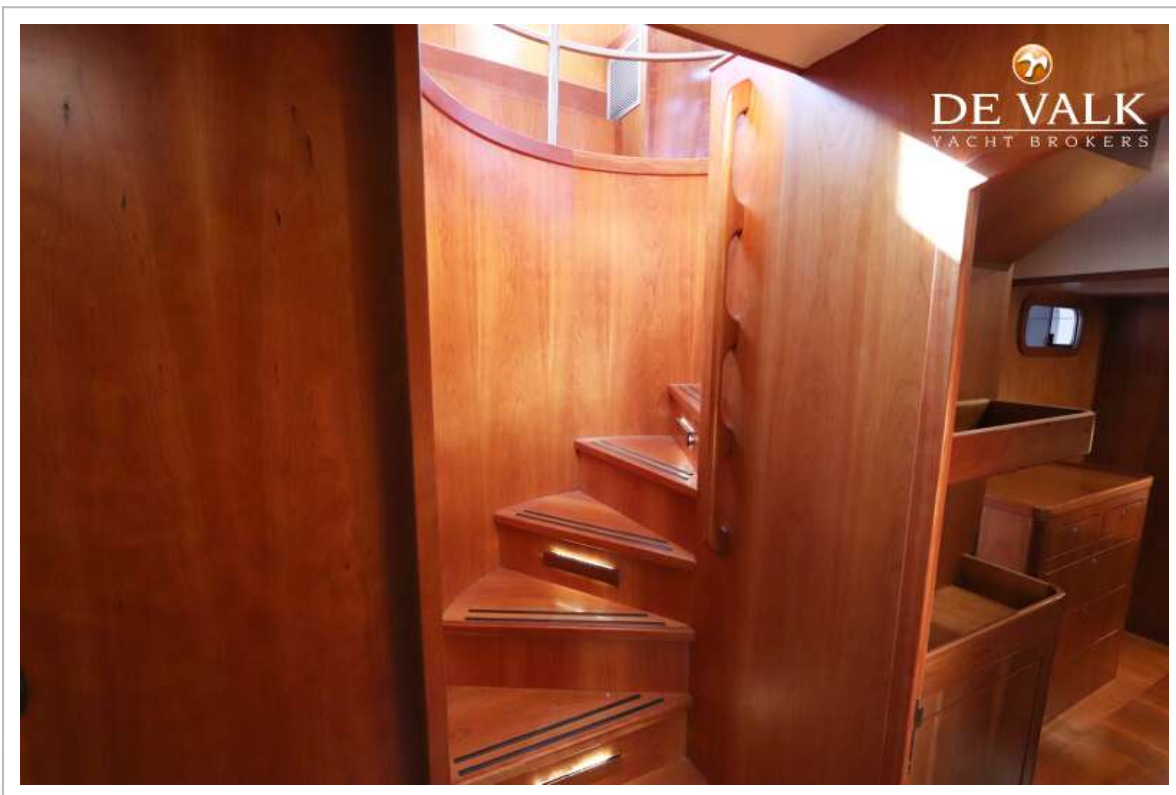
# CUSTOM MARCELO PENNA TRAWLER 70



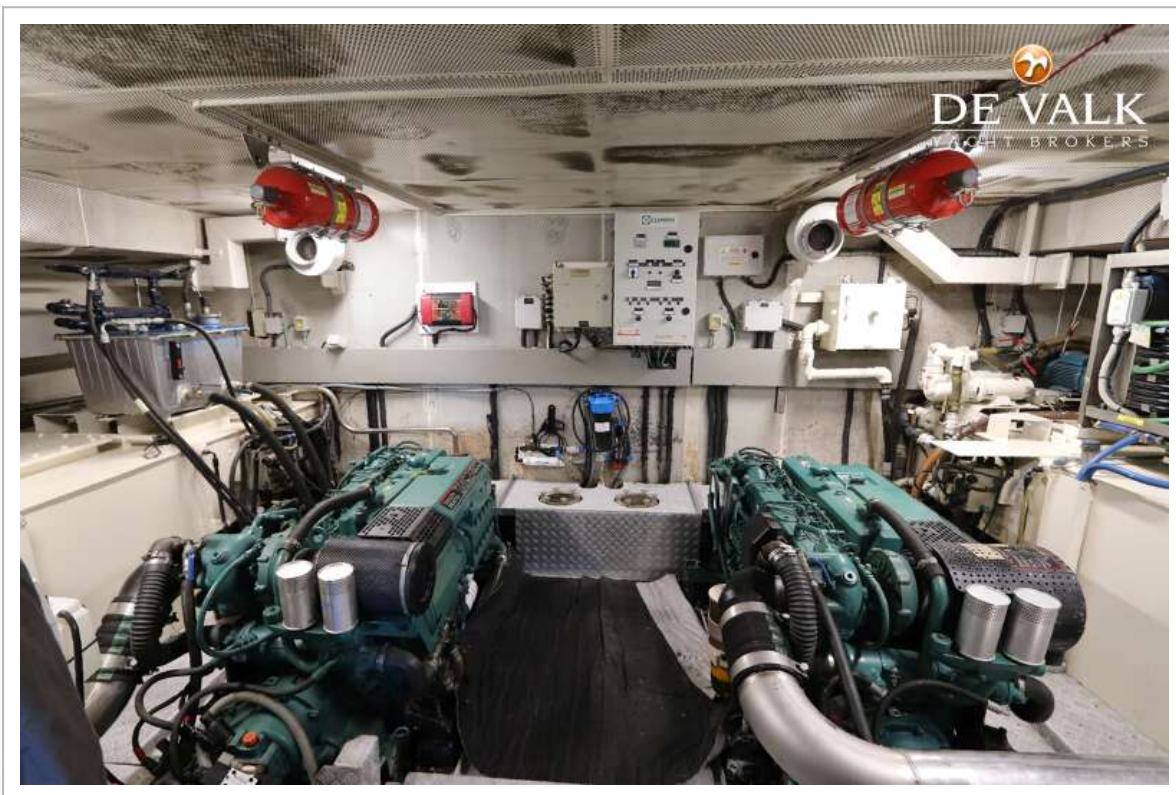
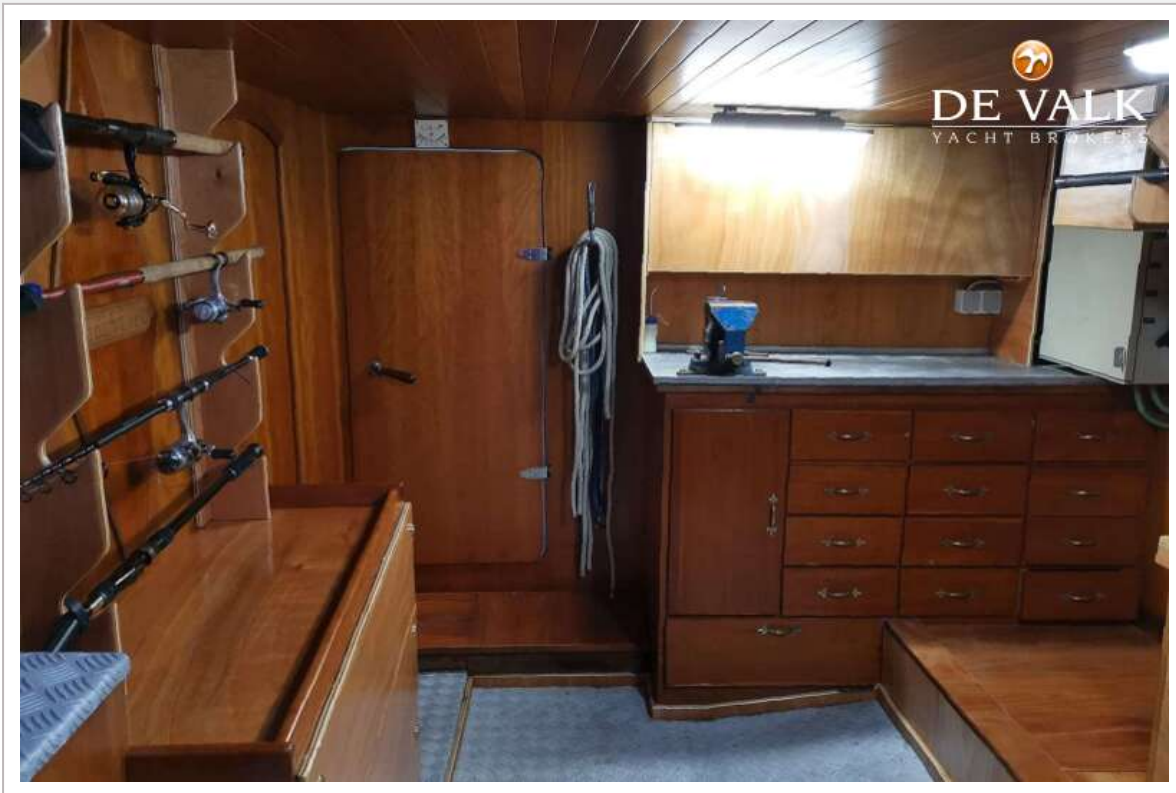
# CUSTOM MARCELO PENNA TRAWLER 70



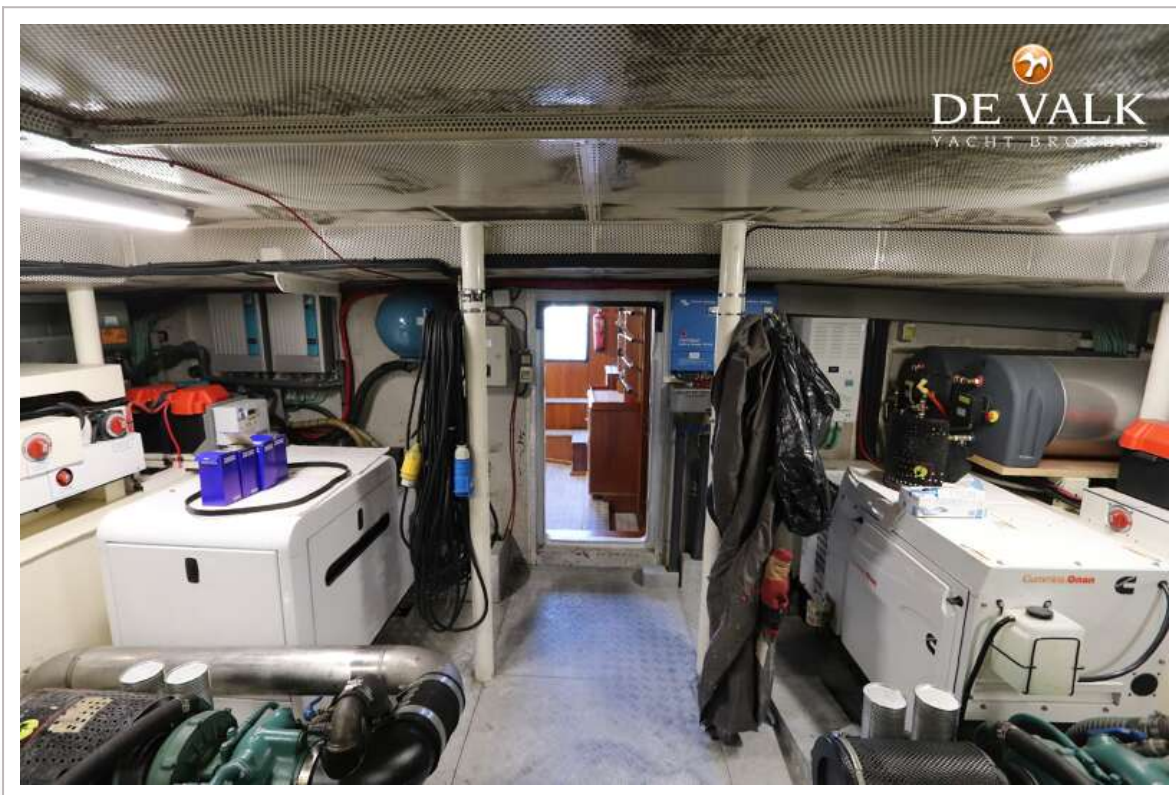
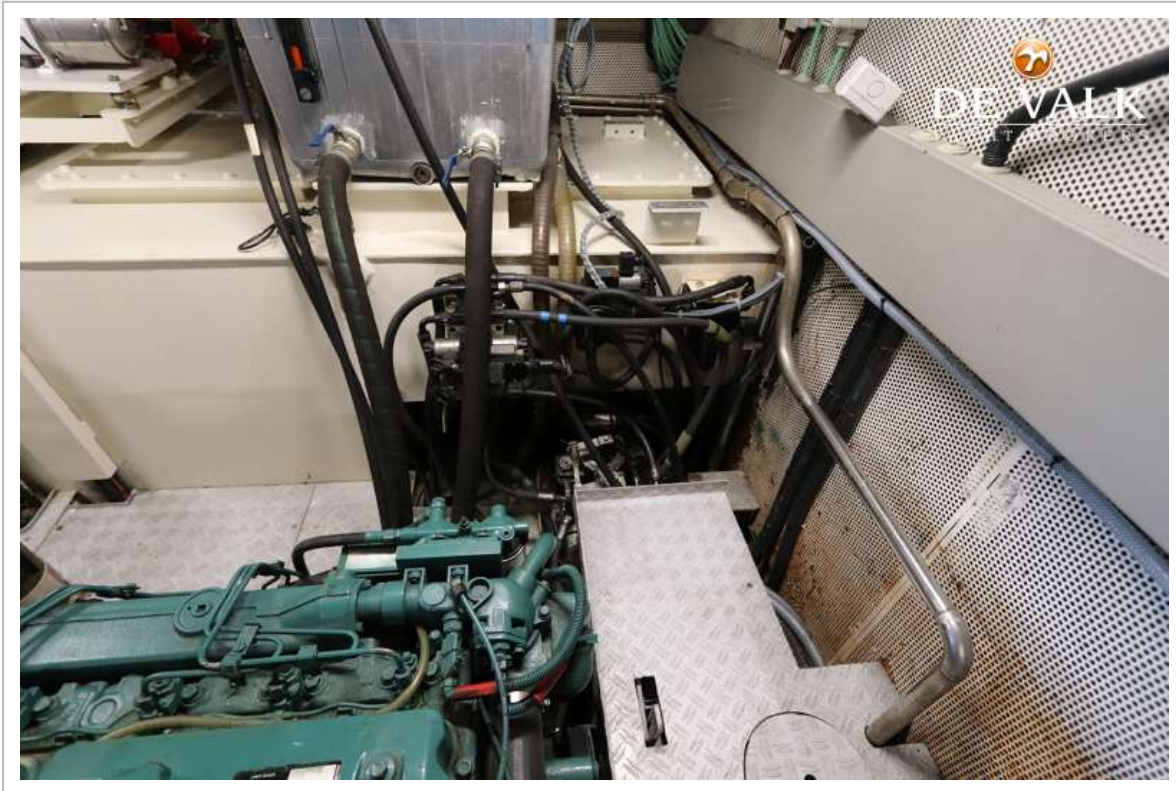
# CUSTOM MARCELO PENNA TRAWLER 70



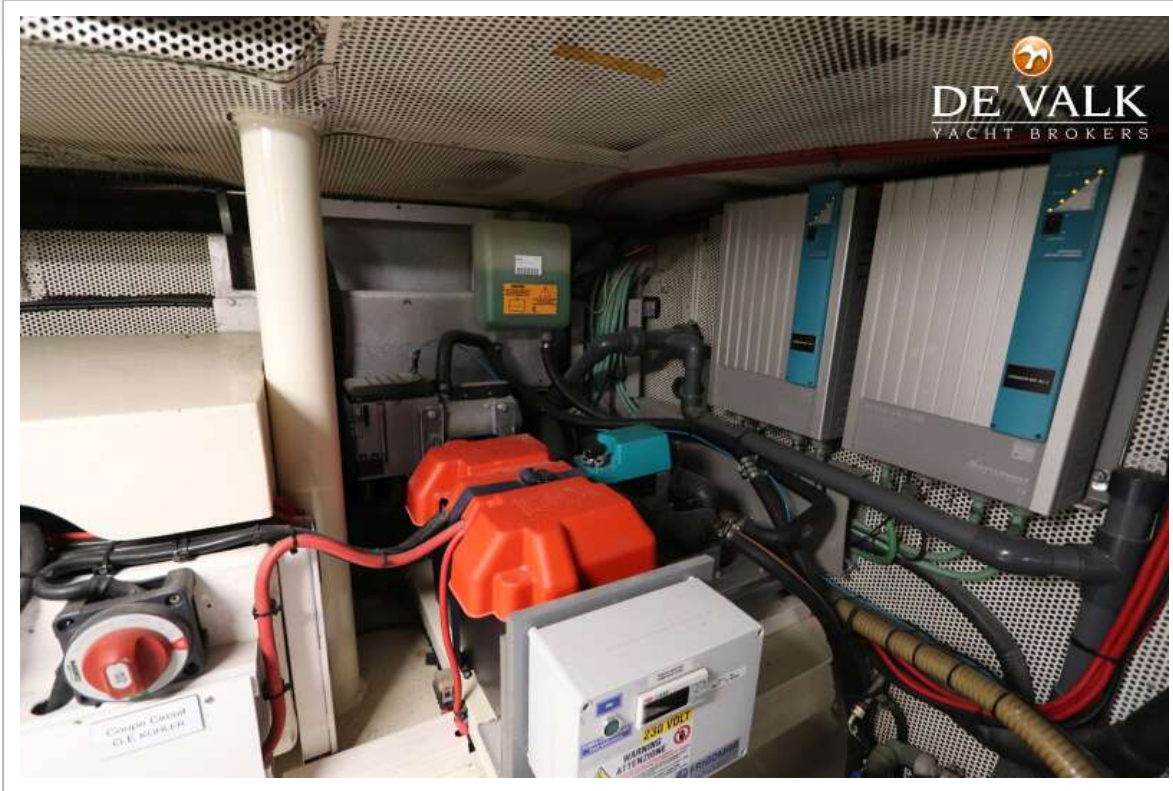
# CUSTOM MARCELO PENNA TRAWLER 70



# CUSTOM MARCELO PENNA TRAWLER 70



# CUSTOM MARCELO PENNA TRAWLER 70



# CUSTOM MARCELO PENNA TRAWLER 70

