



SEALINE 420 STATESMAN



SEALINE 420 STATESMAN

BROKER'S COMMENTS

Sealine is known for their practical and smartly designed motor yachts and this Sealine 420 Statesman is no exception. She offers plenty of comfort for four in two cabins, each with an en suite and her twin Volvo Penta diesel give plenty of performance as well as reliability. This Sealine 420 Statesman is particularly well cared for by her current owner and well worth a viewing if you are looking for a 40 foot flybridge motor yacht. Contact De Valk Zeeland for details.

Nick Lanting

SPECIFICATIONS

Dimensions	13.08 x 4.16 x 1.07 (m)	Builder	Sealine International
Built	1997	Cabins	2
Material	GRP	Berths	5
Engine(s)	2 x Volvo Penta TAMD63P diesel	Hp/Kw	2 x 370.00 (hp), 272.32 (kw)
Asking price	sold (VAT)	Lying	elsewhere / Not at sales office

CONTACT

Sales office	De Valk Sint Annaland B.V.	Telephone	+31 (0)166 601 000
Address	Koelhuisweg 4 4697 RM Sint Annaland NL	E-mail	sintannaland@devalk.nl

DISCLAIMER

These particulars are given in good faith as supplied but cannot be guaranteed.



SEALINE 420 STATESMAN

GENERAL

Model	SEALINE 420 STATESMAN
Type	motor yacht
LOA (m)	13,08
Beam (m)	4,16
Draft (m)	1,07
Air draft (m)	4,50
Headroom (m)	1,89
Year built	1997
Builder	Sealine International
Country	United Kingdom
Displacement (t)	10,7
CE norm	NA
Hull material	GRP
Hull colour	white
Hull shape	V-shaped hull
Superstructure material	GRP
Rubbing strake	stainless steel With rubber insert
Deck material	GRP
Deck finish	non-skid moulded in
Superstructure deck finish	non-skid moulded in
Cockpit deck finish	teak
Antifouling (year)	2023
Window frame	aluminium
Window material	tempered glass
Deckhatch	1
Portholes	aluminium
Flybridge	yes
Flybridge cockpit cover	yes
Radar arch	collapsible
Fuel tank (litre)	585 (95% full)



SEALINE 420 STATESMAN

Fuel tank 2 (litre)	585 (95% full)
Level indicator (fuel tank)	yes
Freshwater tank (litre)	454
Level indicator (freshwater)	yes
Blackwater tank (litre)	yes
Level indicator (blackwater)	yes
Blackwater tank extraction	deck extraction + pump
Wheel steering	hydraulic
Inside helm position	yes
Flybridge helm position	hydraulic
More info on hull	Polished 2023
More info on paintwork	Original gelcoat

ACCOMMODATION

Cabins	2
Berths	5
Interior	cherry
Floor	carpet
Open cockpit	yes
Saloon	yes
Headroom saloon (m)	1,89
Heating	diesel ducted hot air Eberspächer
Chart table	yes
Sliding door to cockpit	yes
Galley	yes
Countertop	wood
Sink	stainless steel 2 x
Cooker	calor gas ENO 3-burner
Oven	SMEV calor gas
Microwave	yes
Fridge	yes



SEALINE 420 STATESMAN

Hot water system	220V + engine
Water pressure system	electrical
Coffee maker	Luxury bone grinder machine
Owners cabin	French bed Forward
Bed length (m)	2,00 x 1,40
Wardrobe	hanging/drawers/shelves
Bathroom	en suite
Toilet	In bathroom
Toilet system	electric
Wash basin	in the bathroom
Shower	separate In bathroom
Extra info	New high quality foam mattress (2023)
Guest cabin 1	twin single Starboard
Bed length (m)	1,90 x 0,70
Wardrobe	hanging/drawers/shelves
Bathroom	en suite
Toilet	In bathroom
Toilet system	electric
Wash basin	in the bathroom
Shower	In bathroom
Flybridge	yes

MACHINERY

No of engines	2
Make	Volvo Penta
Type	TAMD63P
HP	370
kW	272.32
Fuel	diesel
Maximum speed (kn)	28
Cruising speed (kn)	23



SEALINE 420 STATESMAN

Consumption (l/hr)	50
Engine hours	318
Engine cooling system	freshwater heat exchanger
Drive	shaft
Shaft seal	yes
Engine controls	electrical & bowden cable Hydronautice EMC + remote control
Gearbox	hydraulic
Bowthruster	electric
Sternthruster	electric
Exhaust	watercooled
Propeller type	fixed
Propeller blades	4
Propeller shaft material	stainless steel
Shaft lubrication	water
Manual bilge pump	yes
Electric bilge pump	yes
Bilge alarm	yes
Electrical installation	12 V + 220 V
Generator	silent separator HFL (turns when starting, but does not run)
Running hours generator	1436
Batteries	yes
Start battery	yes
Service battery	yes
Battery monitor	Mastervolt Battery Monitor BTM
Battery charger	Victron + Victron Phoenix Multi Control
Diode battery combiners	yes
Shorepower	with cable
Trimtabs	Lenco
Extra info	Engine hours unknown, meters have been replaced in the past
Extra info	Log shows 6903 nm = 1150 hours @ 6nm/hour
Extra info	Engines fully serviced October 2022



NAVIGATION

Compass	Ritchie
Compass on flybridge	yes
Electric compass	In autopilot
Depth sounder	Autohelm DEPTH
Log	Autohelm SPEED
Repeater	On flybridge
VHF	Shipmate RS8300 + Lowrance LVR-250
Autopilot	Autohelm ST6000
Rudder angle indicator	yes
Radar/GPS/plotter	Raymarine RL70C + Raymarine RC631 on flybridge
Navtex	ICS NAV6
Navigation lights	yes

EQUIPMENT

Fixed windscreen	yes
Cockpit cover	yes
Bimini	On flybridge
Cockpit cushions	yes
Bathing platform	yes
Boarding ladder	stainless steel
Transom door	yes
Deck shower	yes
Anchor	Delta
Anchor chain	yes
Windlass	electrical
Capstan	On windlass
Sea railing	stainless steel
Grab rail (superstructure)	stainless steel
Pulpit	yes
Wiper	yes



SEALINE 420 STATESMAN

Horn	electric
Fenders	yes
Mooring lines	yes
Alarm system	yes
TV	80cm in saloon
Radio-cd player	BOSS, with Bluetooth
Cockpit speakers	On flybridge
Speakers in salon	yes
Clock - barometer	yes
Fire extinguisher	yes
Extinguisher in engine room	yes
Auto extinguisher system	Seafire



SEALINE 420 STATESMAN



SEALINE 420 STATESMAN



SEALINE 420 STATESMAN



SEALINE 420 STATESMAN



SEALINE 420 STATESMAN



SEALINE 420 STATESMAN



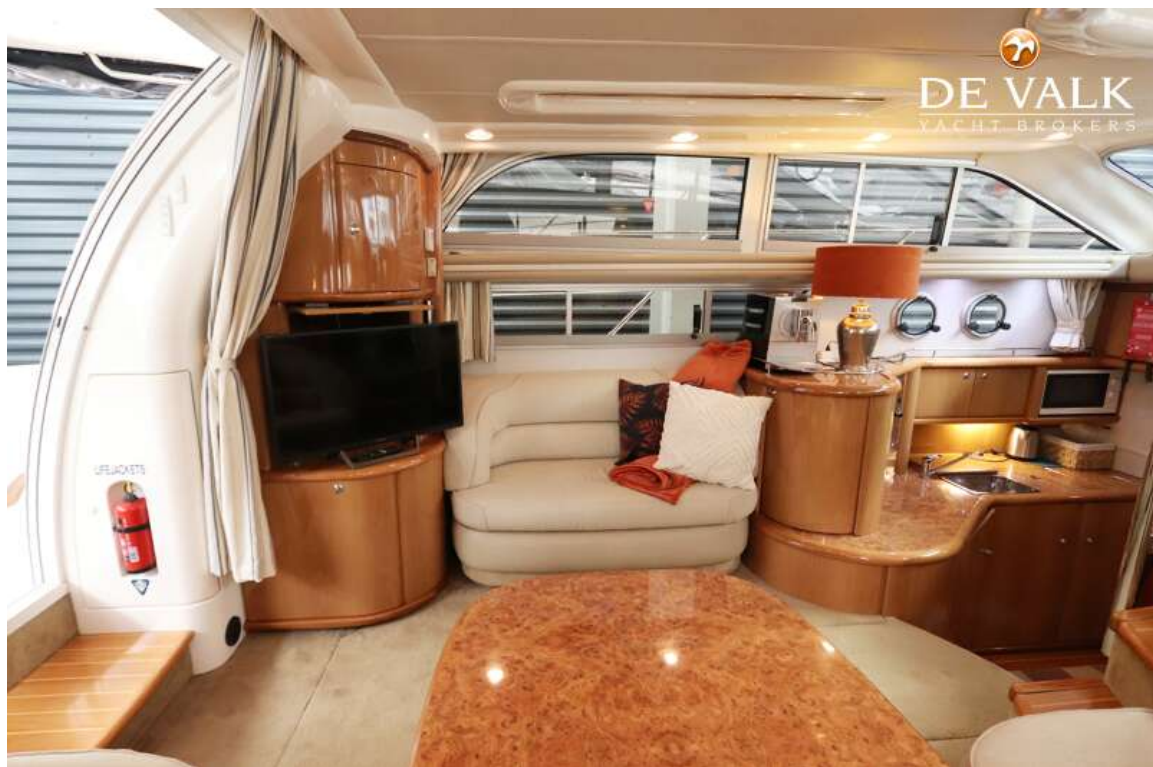
SEALINE 420 STATESMAN



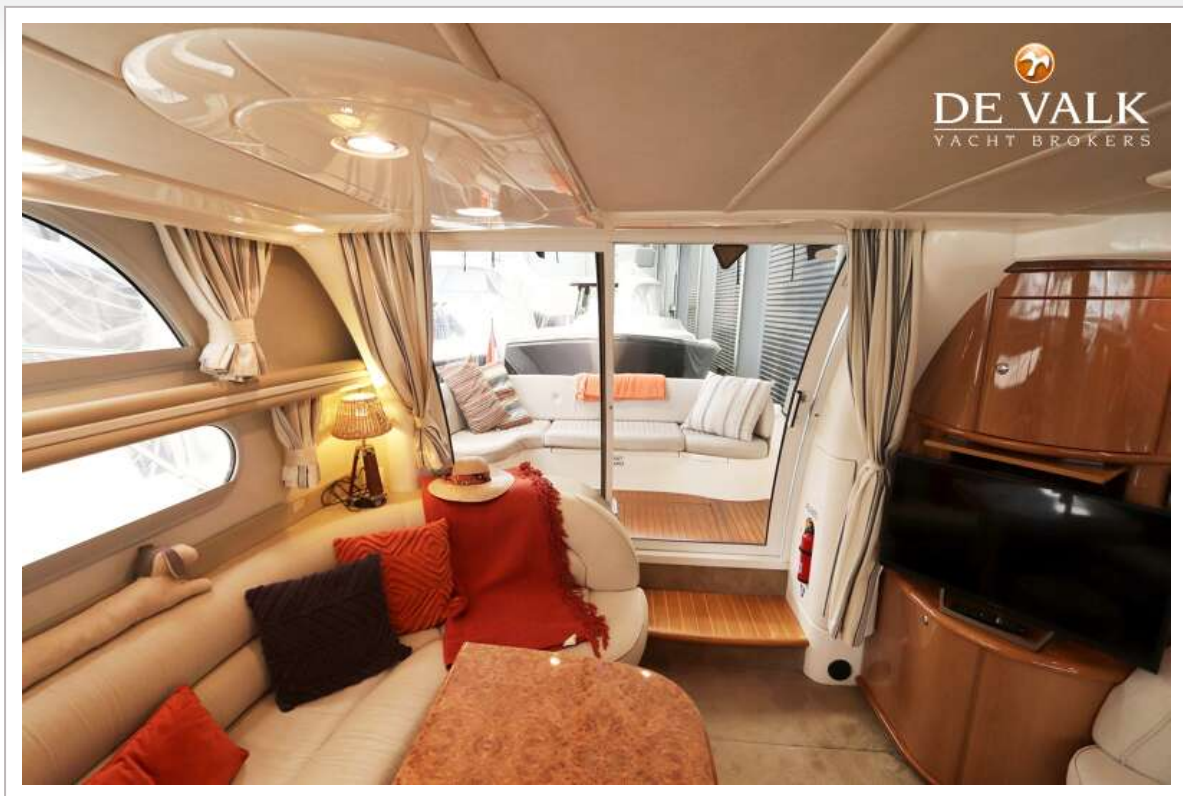
SEALINE 420 STATESMAN



SEALINE 420 STATESMAN



SEALINE 420 STATESMAN



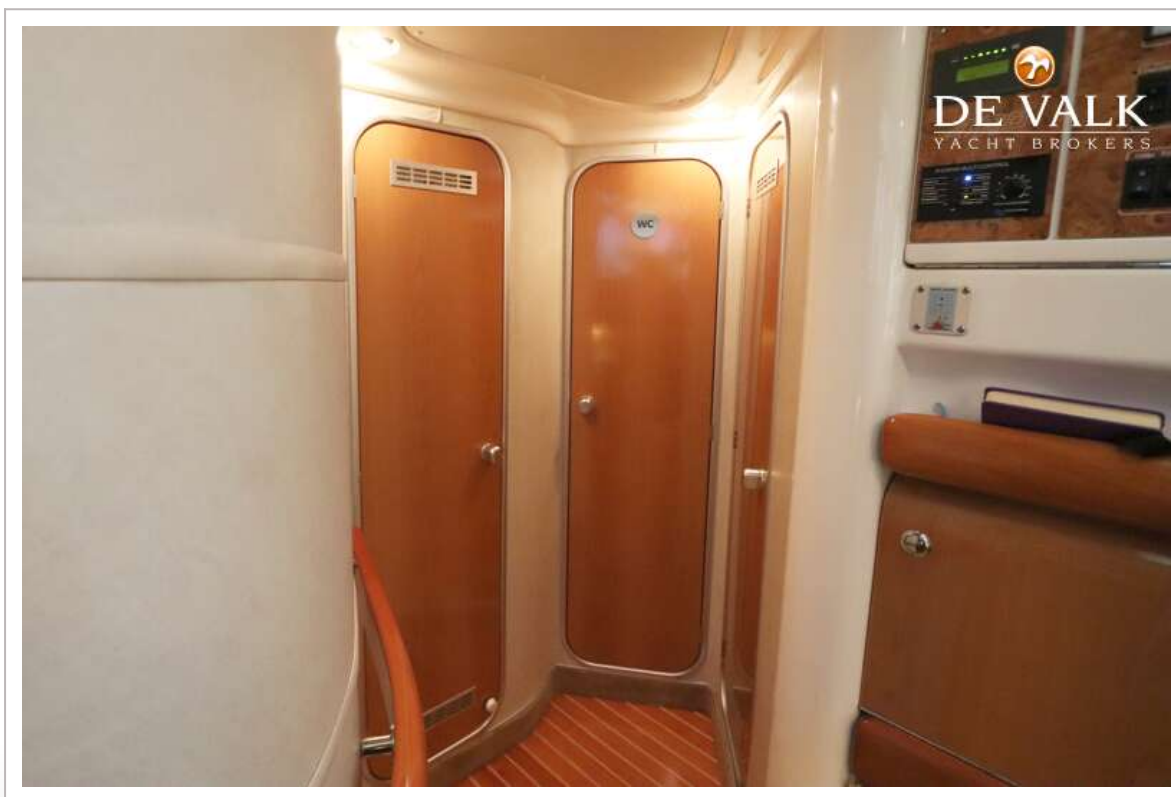
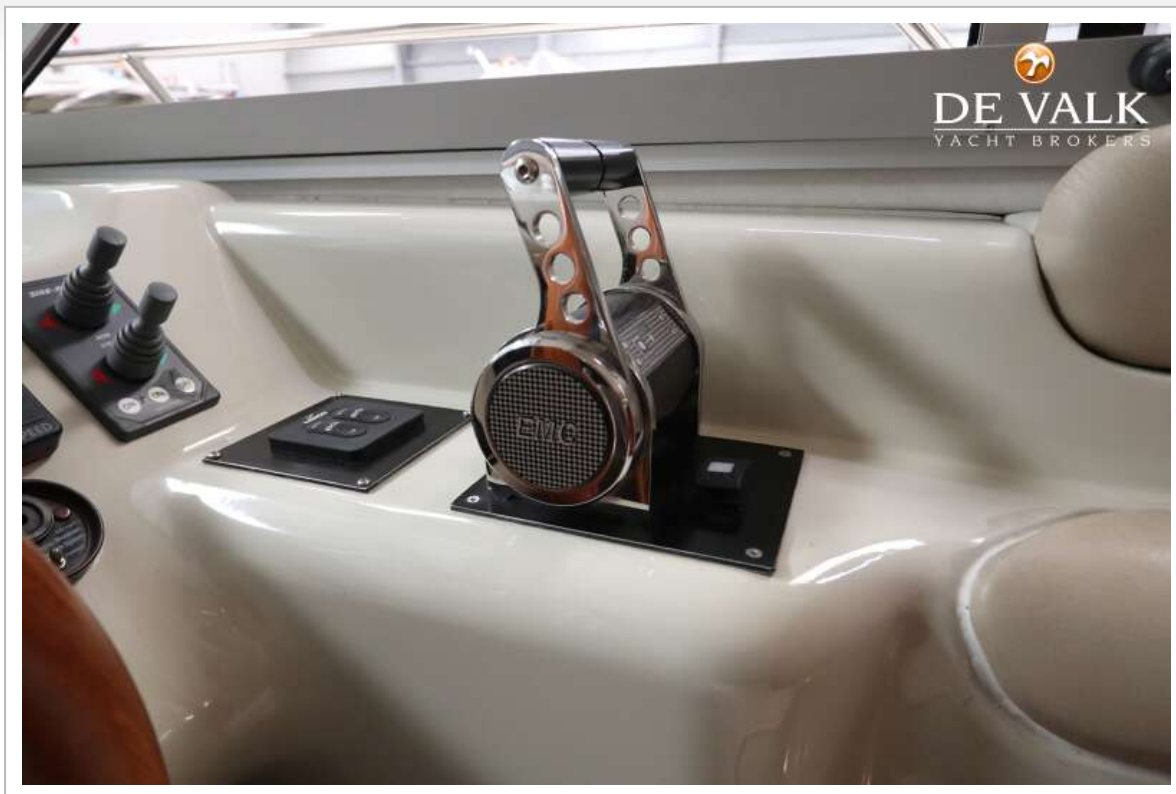
SEALINE 420 STATESMAN



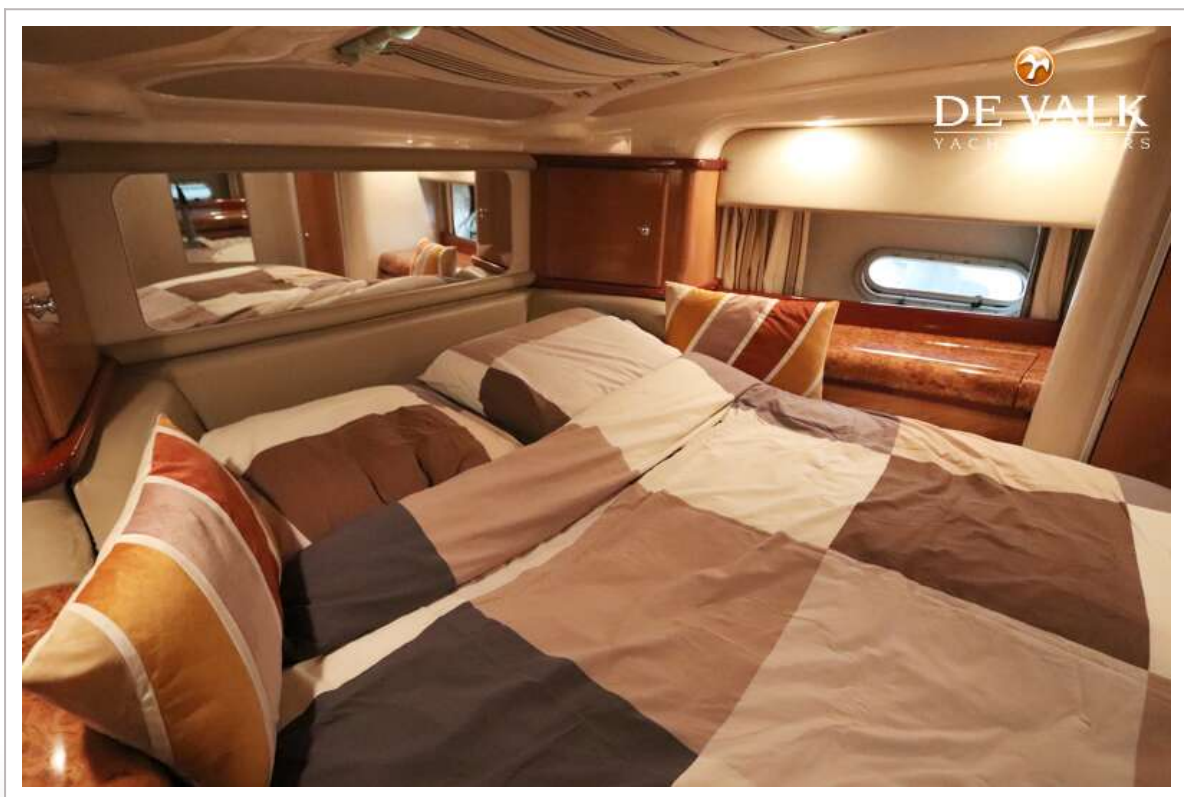
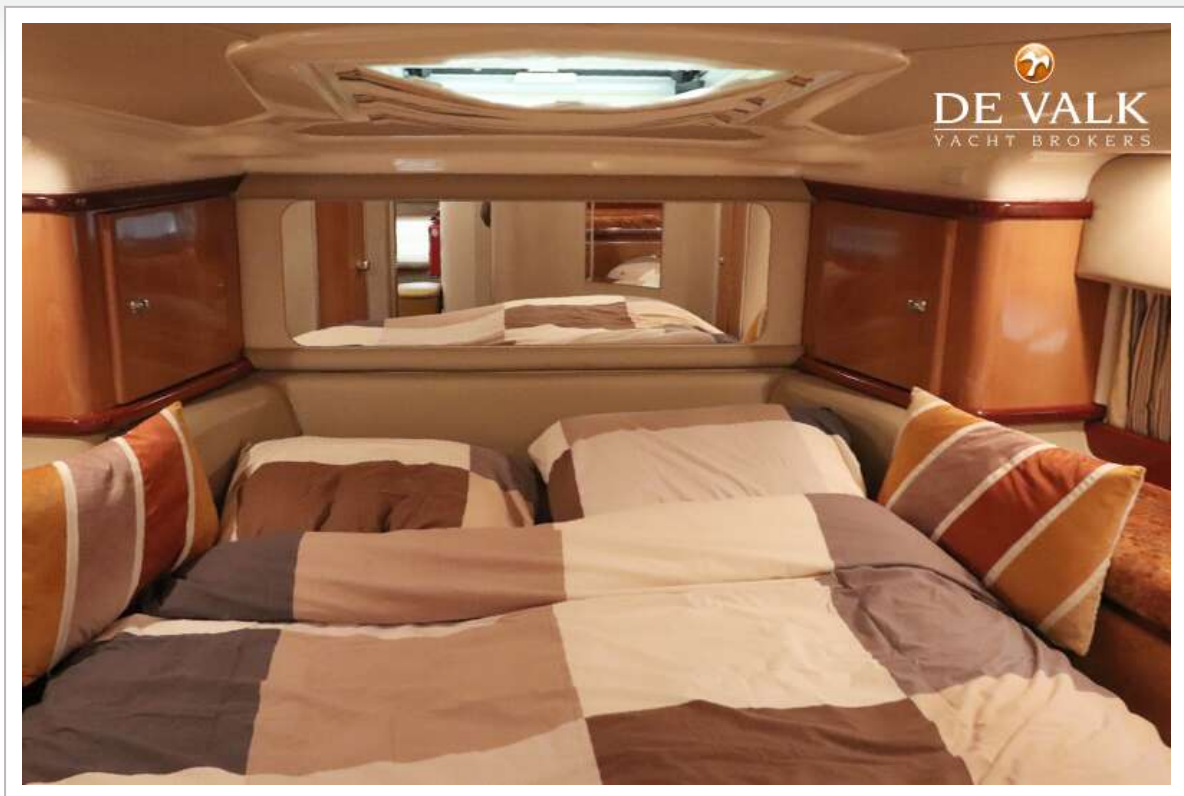
SEALINE 420 STATESMAN



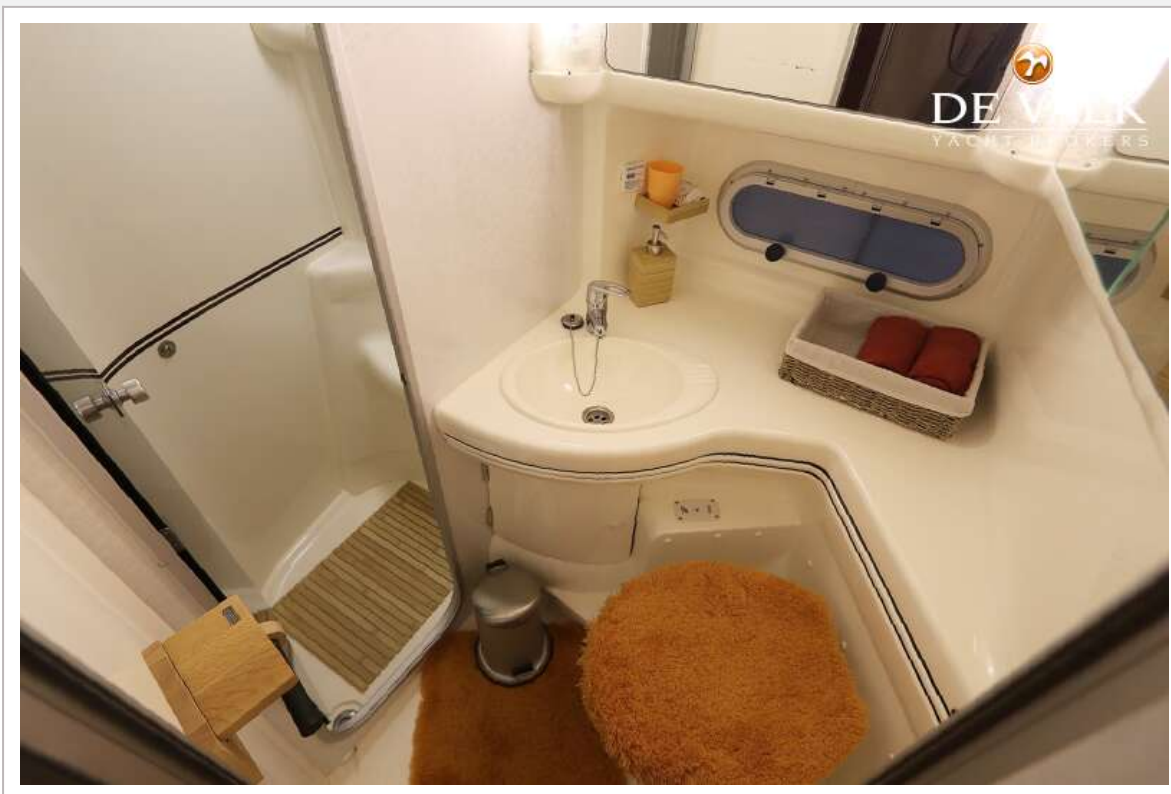
SEALINE 420 STATESMAN



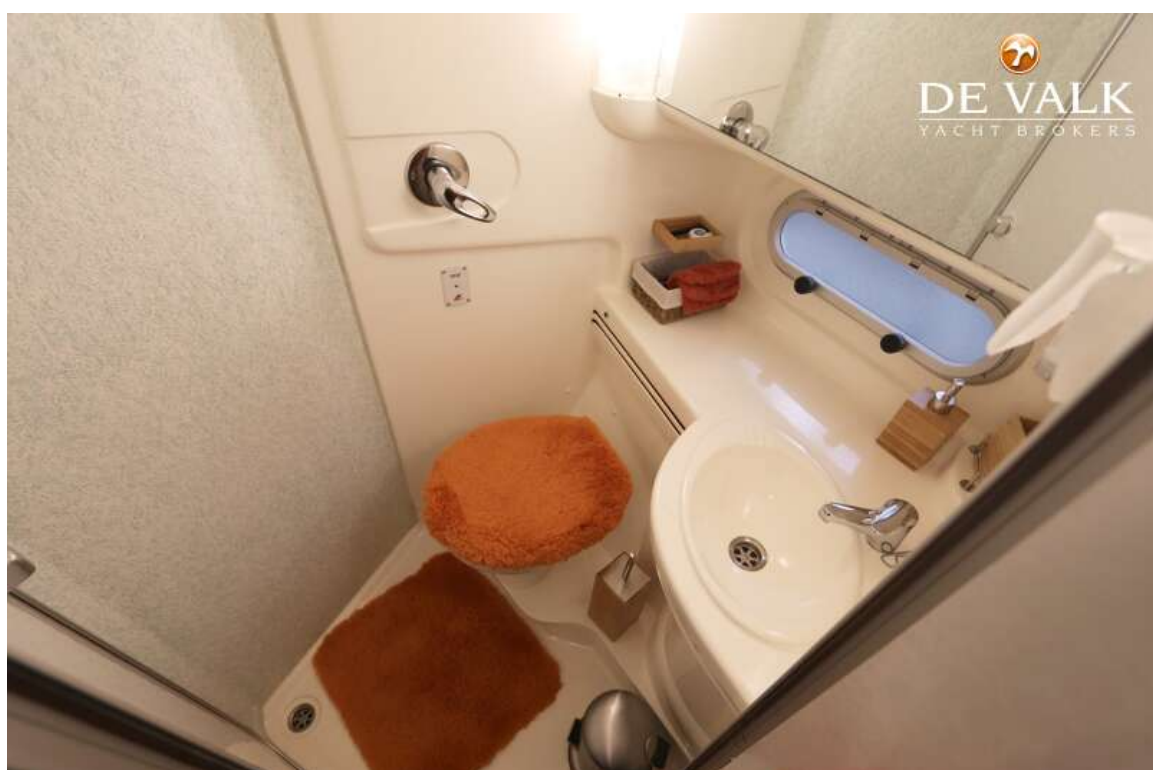
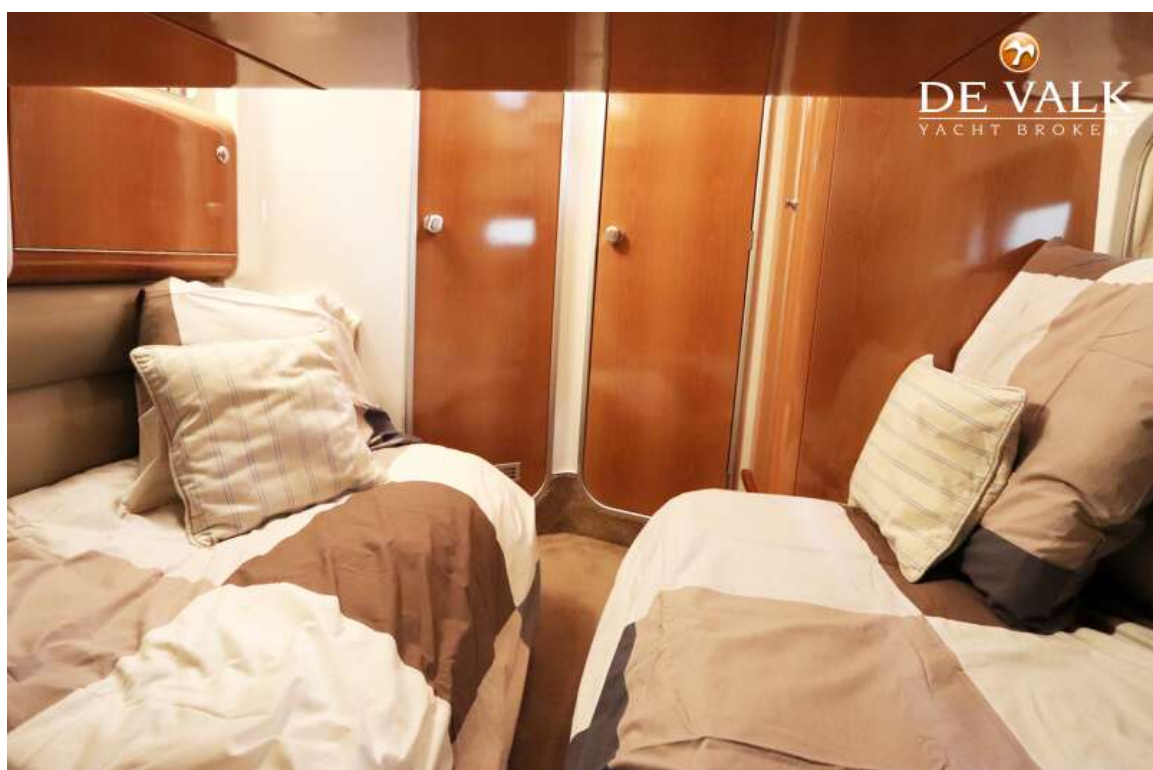
SEALINE 420 STATESMAN



SEALINE 420 STATESMAN



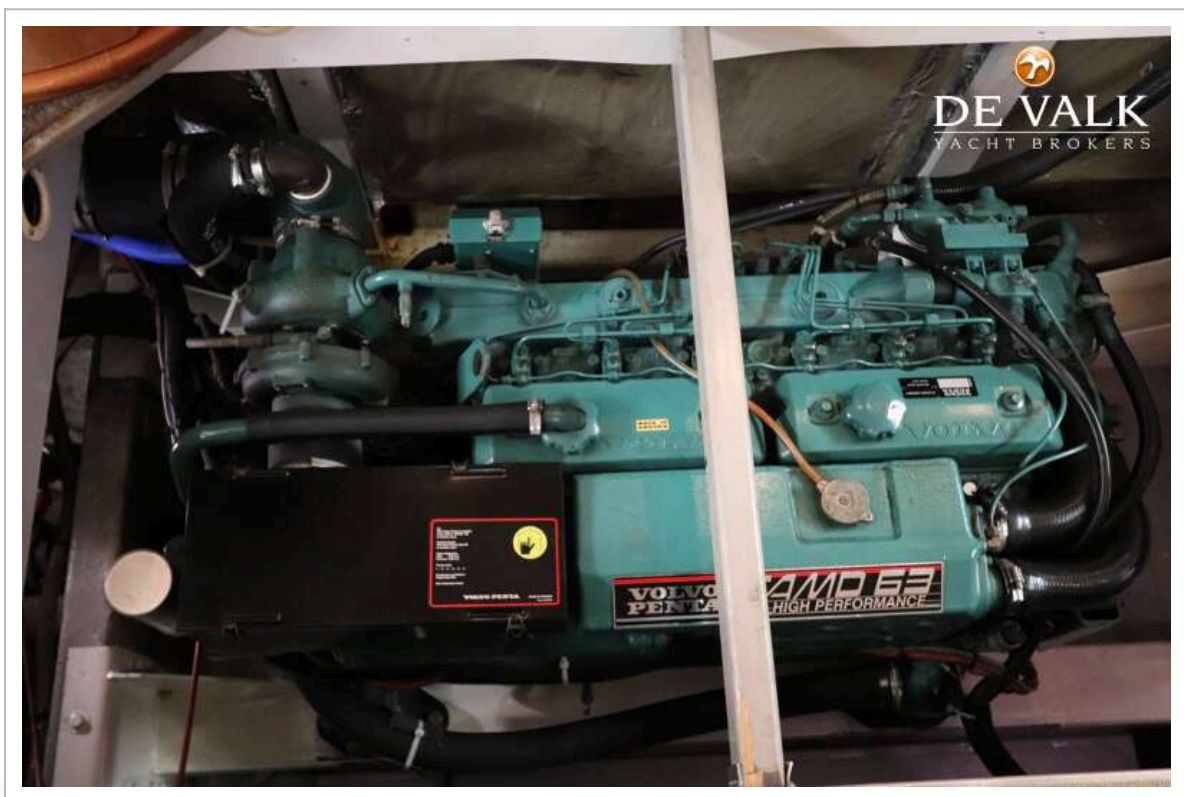
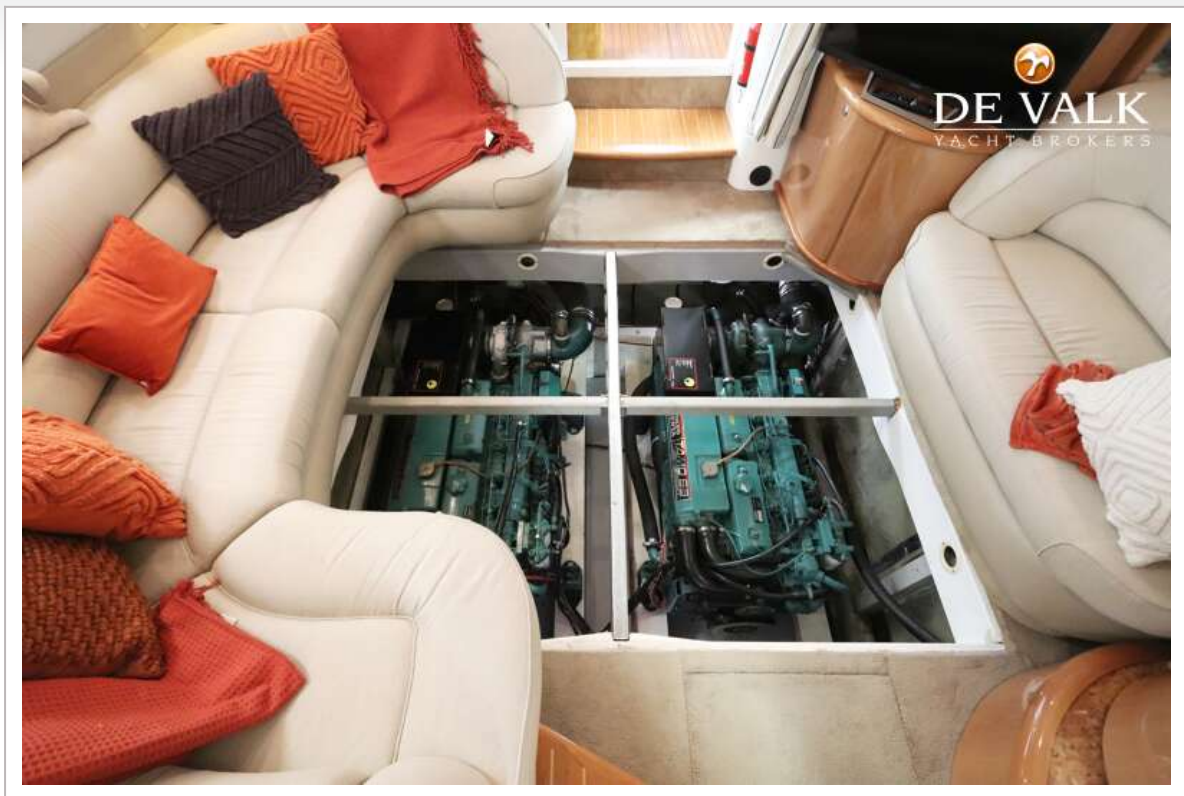
SEALINE 420 STATESMAN



SEALINE 420 STATESMAN



SEALINE 420 STATESMAN



SEALINE 420 STATESMAN



SEALINE 420 STATESMAN

