



DE VALK  
YACHT BROKERS



## NORDIA 45



DE VALK  
YACHT BROKERS

## BROKER'S COMMENTS

A true seagoing sailing yacht built by a yard which already earned recognition for a long period of time. Tinker is built and equipped for total seaworthiness and blue water cruising. Mindful maintenance and recent upgrades ensure her great condition and make her to an outstanding example in her class. The grand salon and 3 cabins provide a generous space for up to 8 persons in classic Mahogany interior. Fully equipped with a strong engine and multiple sources of electric energy, complete navigation and a youngish teak deck this yacht is ready to cruise anywhere safely and comfortable.

*Sofia Iliia-Salvanou*

## SPECIFICATIONS

<b>Dimensions</b>	14.87 x 3.90 x 2.00 (m)	<b>Builder</b>	Van Dam Nordia Jachten B.V.
<b>Built</b>	1977	<b>Cabins</b>	3
<b>Material</b>	Steel	<b>Berths</b>	8
<b>Engine(s)</b>	1 x FORD Tempest 2715E-6 cyl. diesel	<b>Hp/Kw</b>	120.00 (hp), 88.32 (kw)
<b>Asking price</b>	sold (VAT )	<b>Lying</b>	

## CONTACT

<b>Sales office</b>	De Valk Corfu	<b>Telephone</b>	(+30) 6948681503
<b>Address</b>	New Port of Corfu, near Gouvia Marina 490 83 Corfu GR	<b>E-mail</b>	corfu@devalk.nl

## DISCLAIMER

These particulars are given in good faith as supplied but cannot be guaranteed.



## GENERAL

Model	NORDIA 45
Type	sailing yacht
LOA (m)	14,87
Beam (m)	3,90
Draft (m)	2,00
Headroom (m)	1,90
Year built	1977
Builder	Van Dam Nordia Jachten B.V.
Country	The Netherlands
Designer	Robert Van Dam
Displacement (t)	22
Gross tonnage	18,40
Net tonnage	11,04
Hull material	steel
Hull colour	white
Hull thickness (mm)	4-5
Keel type	long keel
Superstructure material	teak
Deck plate thickness (mm)	4
Deck material	steel
Deck finish	teak New 2014, recaulked 2017
Cockpit deck finish	teak
Antifouling (year)	2022
Dorades	yes
Window frame	aluminium
Window material	glass
Deckhatch	yes
Portholes	yes
Insulation	yes
Fuel tank (litre)	1200



Freshwater tank (litre)	1500
Blackwater tank (litre)	250
Wheel steering	yes
Inside helm position	yes
Extra info	Survey reports: 2013 & 2016
Extra info	Ultra sound & ham. testing 2013 and 2016

## ACCOMMODATION

Cabins	3
Berths	8
Interior	mahogany
Layout	yes
Floor	teak
Pilot house	yes
Saloon	yes
Headroom saloon (m)	1,90
Air-conditioning	For salon
Navigation center	yes
Dinette	yes
Opening door to cockpit	yes
Galley	yes
Countertop	yes
Sink	yes
Cooker	yes
Oven	yes
Gas alarm	PILOT (2018)
Fridge	Front loaded
Freezer	Top loaded fridge/freezer
Hot water system	yes
Manual and/or foot pump	yes
Crockery	yes



<b>Owners cabin</b>	double bed
<b>Wardrobe</b>	hanging/drawers/shelves
<b>Bathroom</b>	en suite
<b>Toilet</b>	en suite
<b>Toilet system</b>	manual JABSCO 2017
<b>Wash basin</b>	in the bathroom
<b>Shower</b>	en suite
<b>Guest cabin 1</b>	v-bed
<b>Wardrobe</b>	hanging/drawers/shelves
<b>Bathroom</b>	shared
<b>Toilet</b>	shared
<b>Toilet system</b>	electric VETUS 2017
<b>Wash basin</b>	in the bathroom
<b>Shower</b>	shared
<b>Guest cabin 2</b>	bunk bed
<b>Wardrobe</b>	hanging and shelves
<b>Bathroom</b>	shared
<b>Toilet</b>	shared
<b>Toilet system</b>	electric VETUS 2017
<b>Wash basin</b>	in the bathroom
<b>Shower</b>	shared
<b>Extra info</b>	One day bad at the stern

## MACHINERY

<b>No of engines</b>	1
<b>Make</b>	FORD Tempest
<b>Type</b>	2715E-6 cyl.
<b>HP</b>	120
<b>kW</b>	88.32
<b>Fuel</b>	diesel
<b>Maximum speed (kn)</b>	8



<b>Cruising speed (kn)</b>	5,8
<b>Consumption (l/hr)</b>	5
<b>Engine hours</b>	10.500
<b>Engine cooling system</b>	freshwater heat exchanger
<b>Drive</b>	shaft
<b>Shaft seal</b>	yes
<b>Gearbox</b>	NEW AGE PRM Hydraulic marine
<b>Bowthruster</b>	SIDE POWER
<b>Propeller type</b>	fixed
<b>Propeller blades</b>	Bronze
<b>Propeller shaft material</b>	steel
<b>Electric bilge pump</b>	yes
<b>Bilge alarm</b>	X 2 acoustic 2018
<b>Electrical installation</b>	yes
<b>Generator</b>	ONAN MDKBN 11Kw
<b>Running hours generator</b>	1000
<b>Batteries</b>	yes
<b>Start battery</b>	X2 (2022)
<b>Service battery</b>	X 6 (2018) 100Ah each ATLAS E-NEX
<b>Generator battery</b>	X 1
<b>Battery monitor</b>	Victron energy 11/2016
<b>Battery charger</b>	yes
<b>Inverter</b>	Victron energy 11/2016
<b>Wind generator</b>	Air Breeze
<b>Solar panel</b>	2018
<b>Shorepower</b>	with cable Marinco stainless steel shore power plug (2018)
<b>Insulation transformer</b>	11/2016
<b>Extra info</b>	Several AC outlets in wheelhouse, heads & deck

## NAVIGATION

<b>Compass</b>	yes
----------------	-----



Depth sounder	RAYMARINE ST50
Log	RAYMARINE TRIDATA ST50
Windset	Autohelm RAYMARINE ST50
VHF	ICOM IC M423 (for MMSI 02/2018)
Autopilot	SIMRAD AP20 with fluxgate compass
Rudder angle indicator	yes
Radar	FURUNO 1721
GPS	FURUNO GP 32
Plotter	Onwa KP1299, 12 inch display (2016)
Navtex	ICS Nav 6
AIS receiver	NASA Marine
EPIRB	Ocean signal 02/2018
Navigation lights	yes
Extra info	Inclinometer

## EQUIPMENT

Fixed windscreen	yes
Sun awning	07/2017
Cockpit chairs	X 4
Bathing platform	yes
Boarding ladder	yes
Gangway	yes
Anchor	Rocna 35Kg 07/2016
Anchor chain	110m 07/2016
Anchor 2	Bruce 35 Kg
Anchor chain	10m chain plus rope
Other ground tackle	Remote control for anchor winch & Bow Thruster
Windlass	LOFRANS TITAN 2300Watt 05/2018
Dinghy	Not new
Outboard	Needs repairs
Davits	stainless steel With solar panel mounting



<b>Sea railing</b>	yes
<b>Life raft</b>	yes
<b>Life raft (pers)</b>	X 8 out of service
<b>Lifejackets</b>	X 4 automatic
<b>Lifebuoy</b>	yes
<b>Fenders</b>	yes
<b>Mooring lines</b>	yes
<b>Spare parts</b>	yes
<b>Surround Sound System</b>	SONY Stereo
<b>Clock - barometer</b>	yes
<b>Fire extinguisher</b>	X 3 serviced 09/2022
<b>Extra info</b>	All mattresses replaced 08/2018

## RIGGING

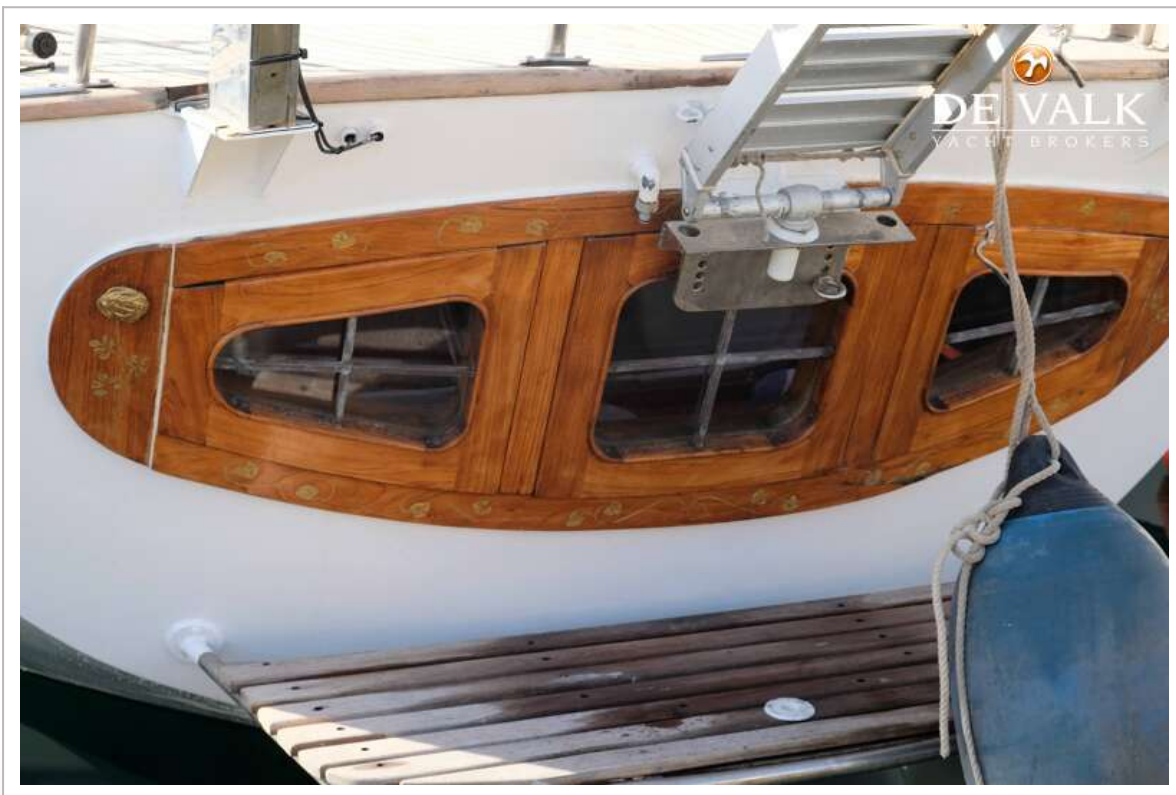
<b>Rigging</b>	ketch
<b>Standing rigging</b>	yes
<b>Material mast</b>	aluminium Gold anodised alloy
<b>Spreaders</b>	yes
<b>Mainsail</b>	Reefing: slab with lazy bag & lazy jacks. Spare main sail
<b>Mainsail cover</b>	yes
<b>Mizzen</b>	Reefing: slab with lazy bag & lazy jacks
<b>Jib</b>	Reefing: Furling
<b>Genoa</b>	Reefing: Furling
<b>Spinnaker</b>	Poles X 2
<b>Reefing System</b>	slabreefing
<b>Halyard winches</b>	yes
<b>Multifunctional winches</b>	yes
<b>Spi-pole</b>	X 2



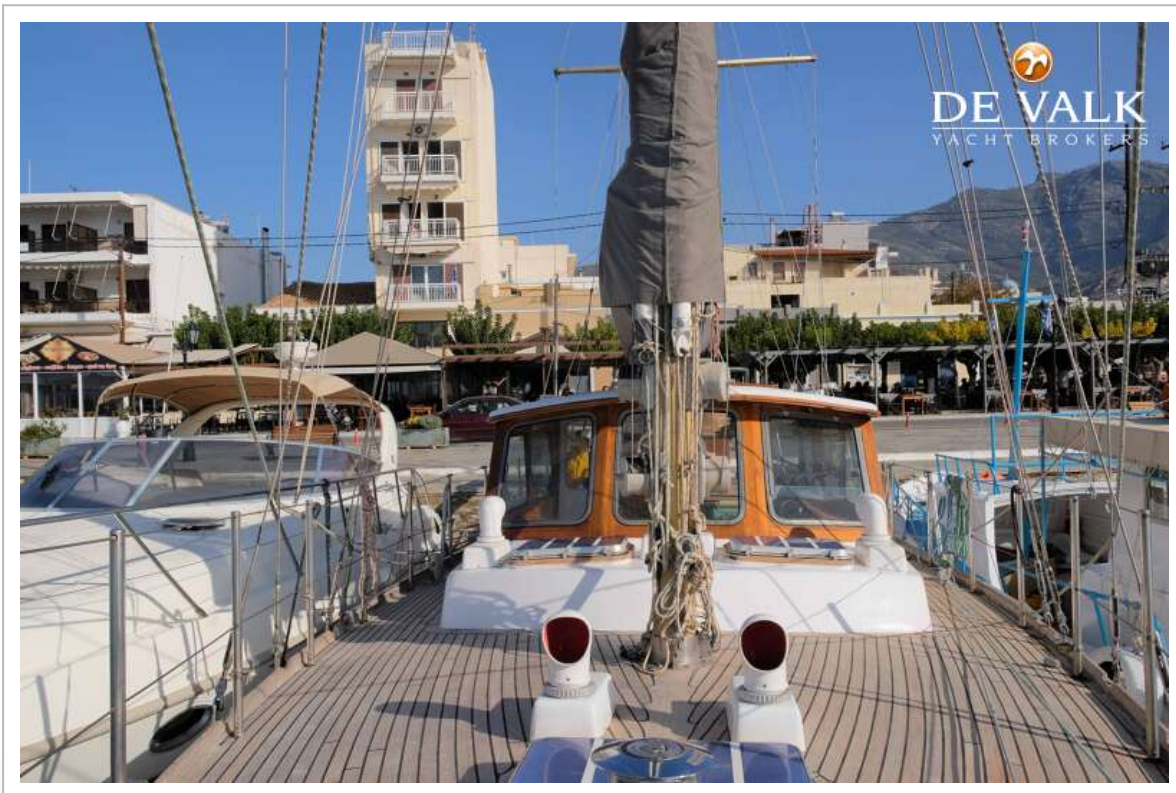
# NORDIA 45



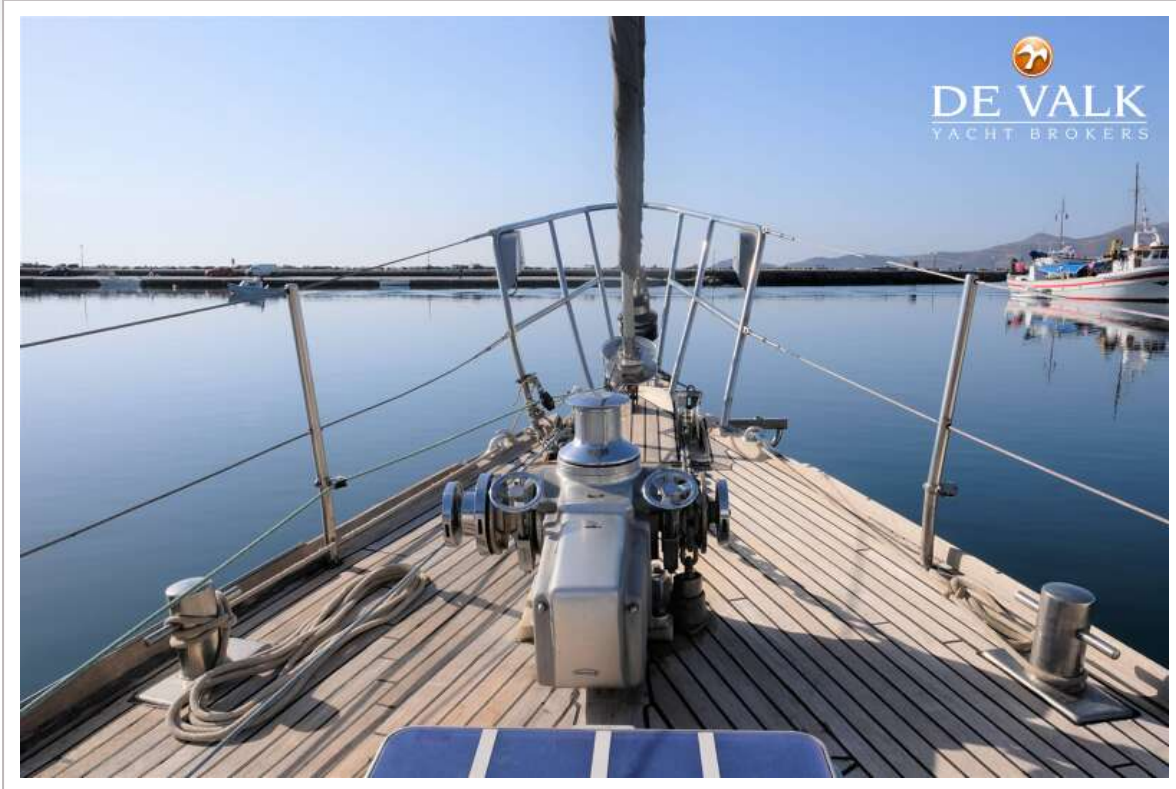
# NORDIA 45



# NORDIA 45



# NORDIA 45

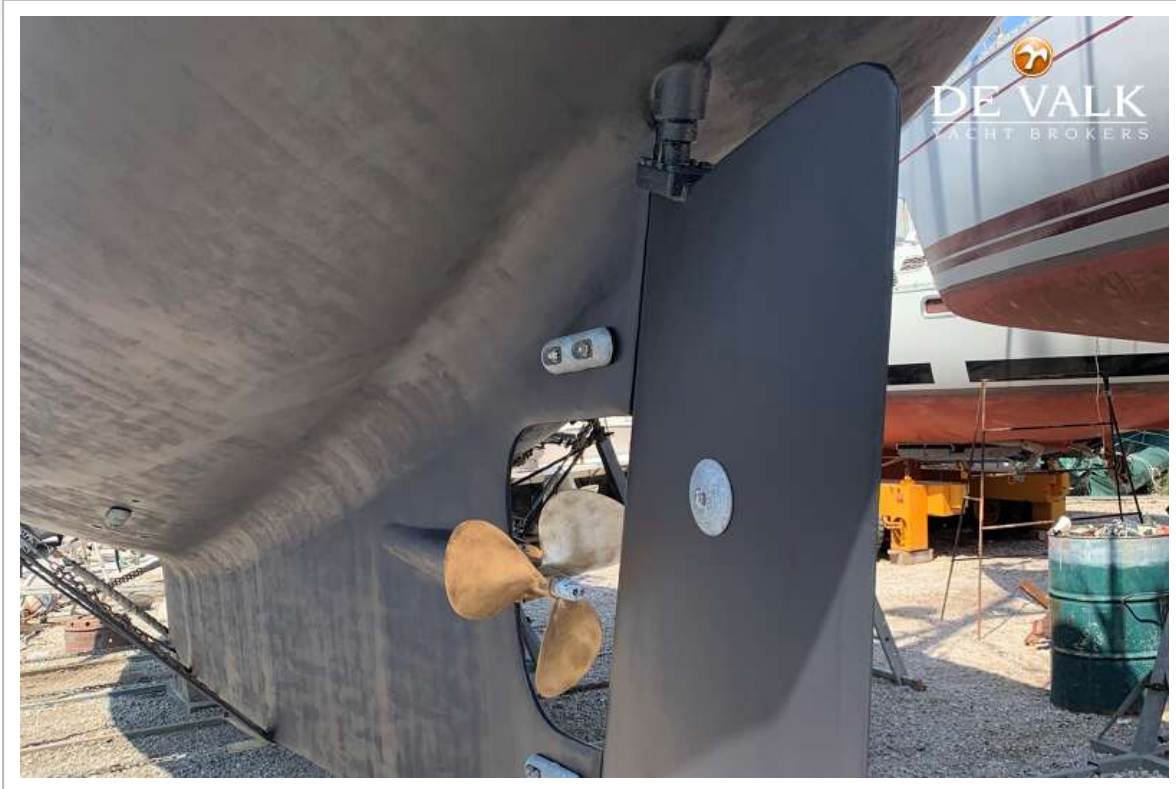


# NORDIA 45



# NORDIA 45

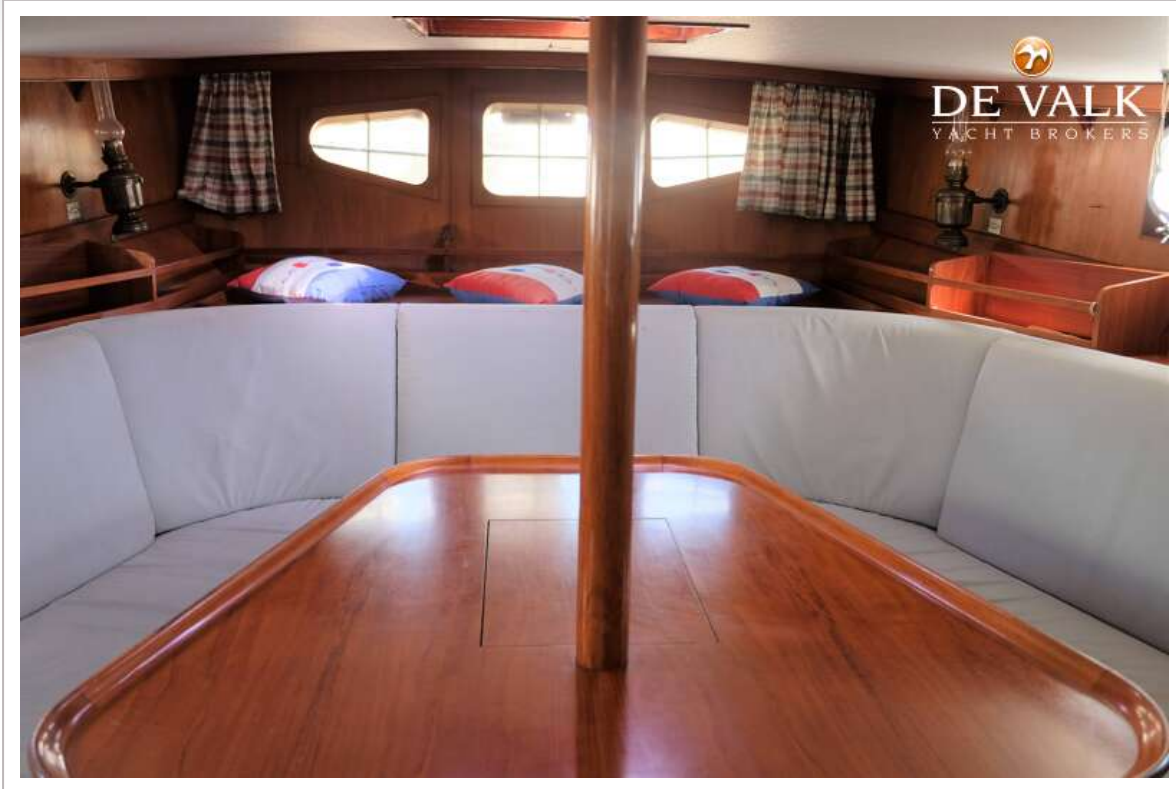




# NORDIA 45



# NORDIA 45



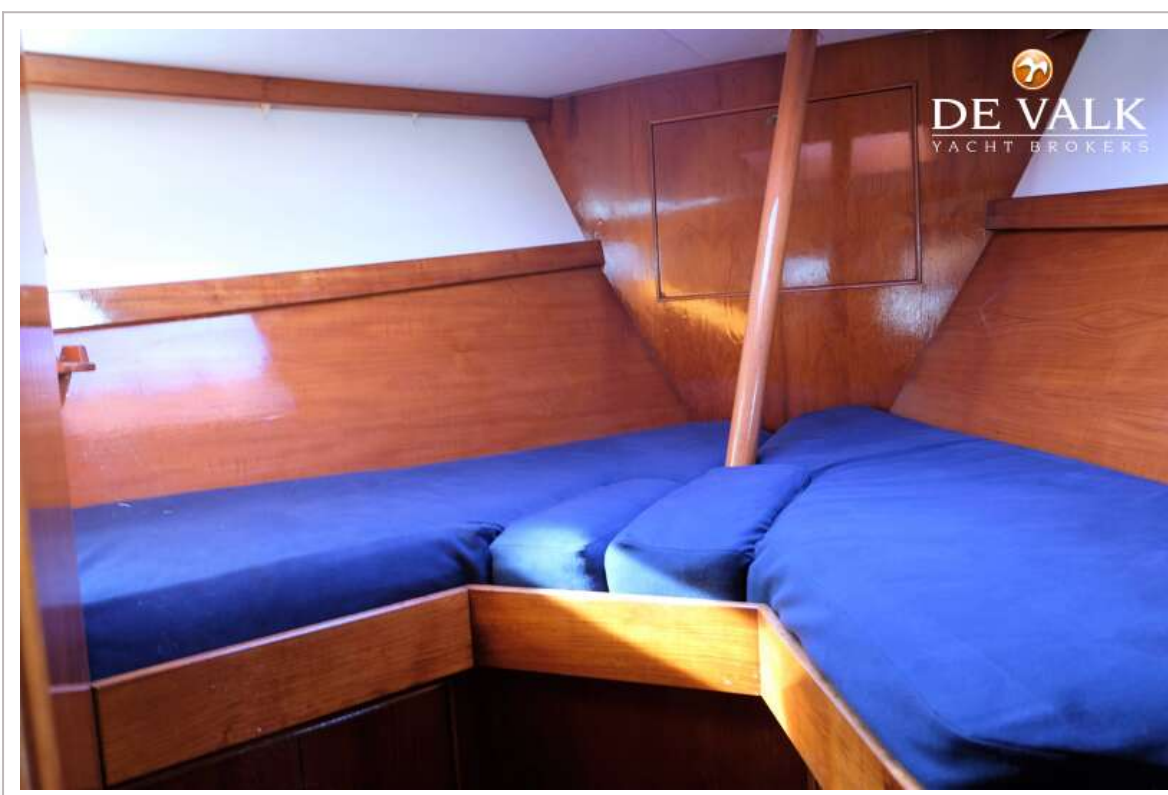
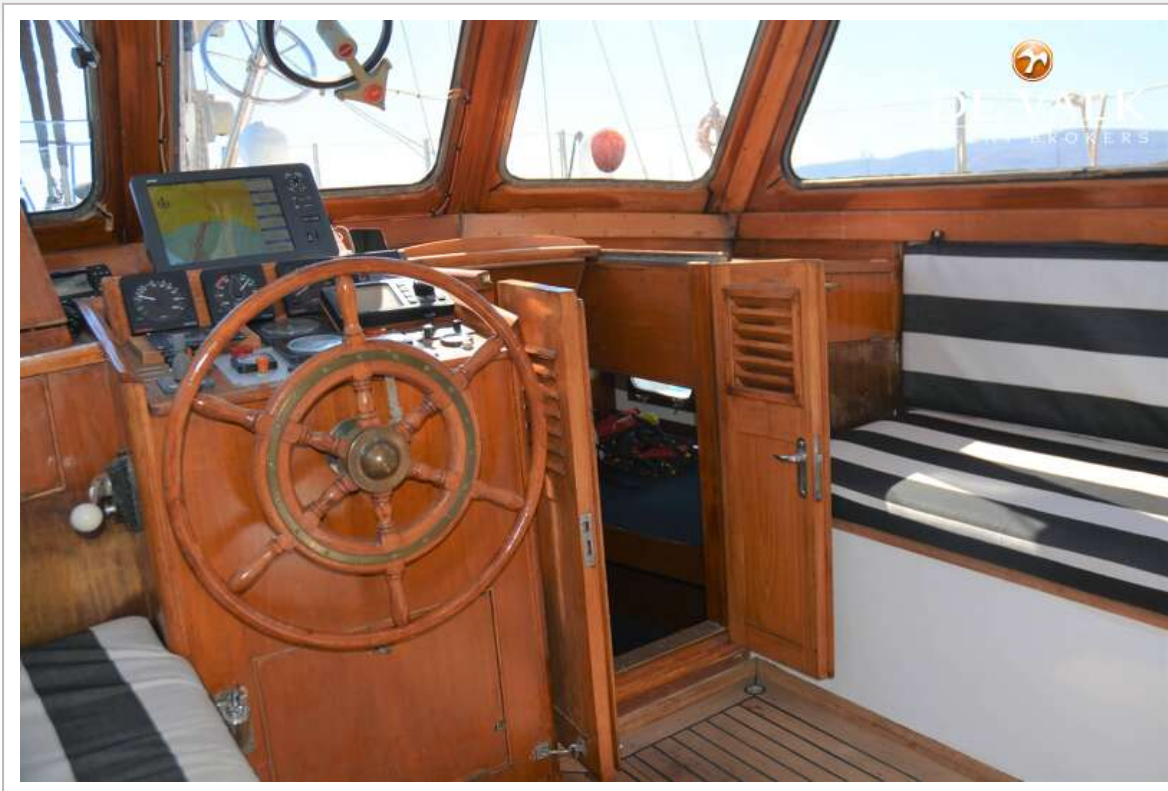
# NORDIA 45



# NORDIA 45



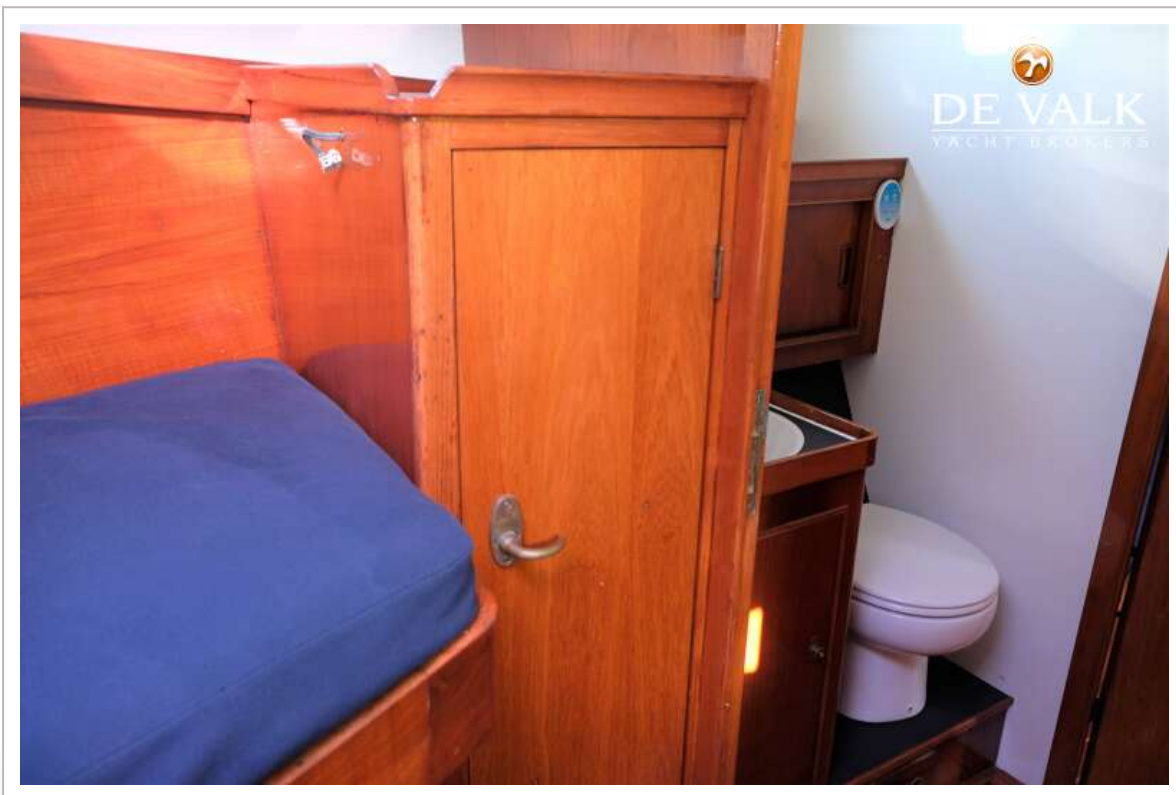
# NORDIA 45



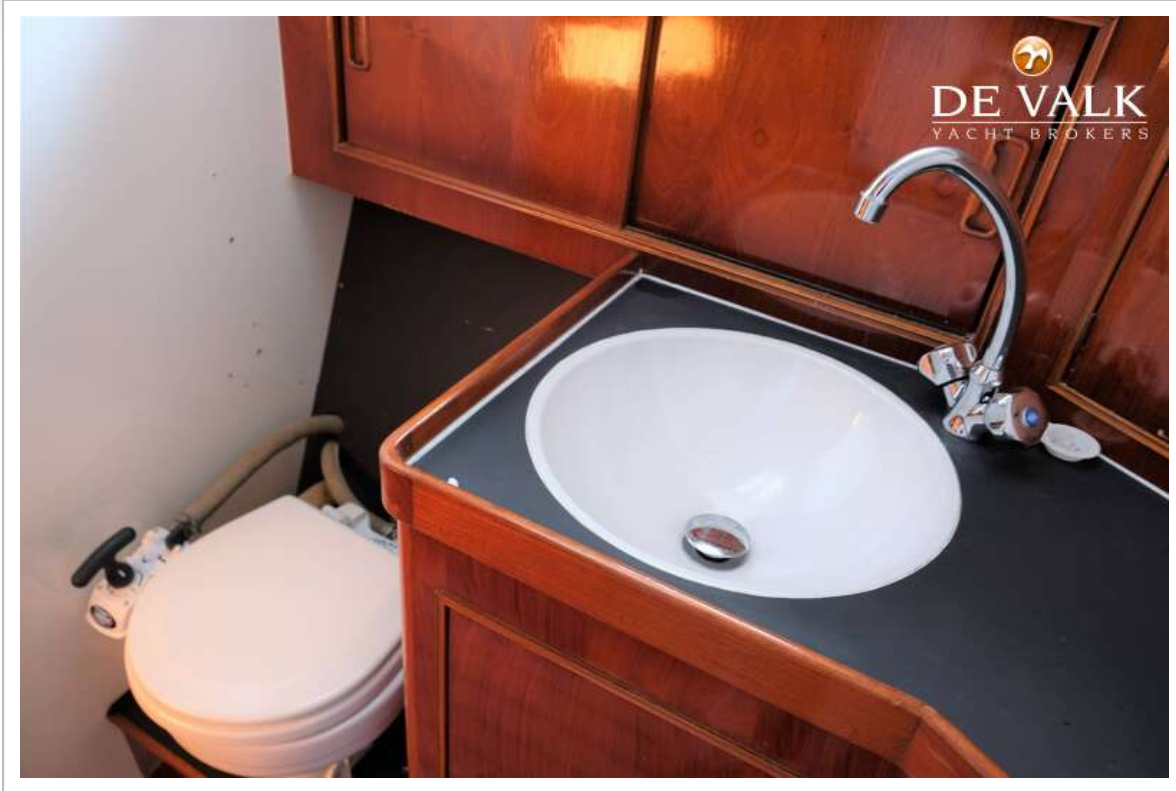
# NORDIA 45



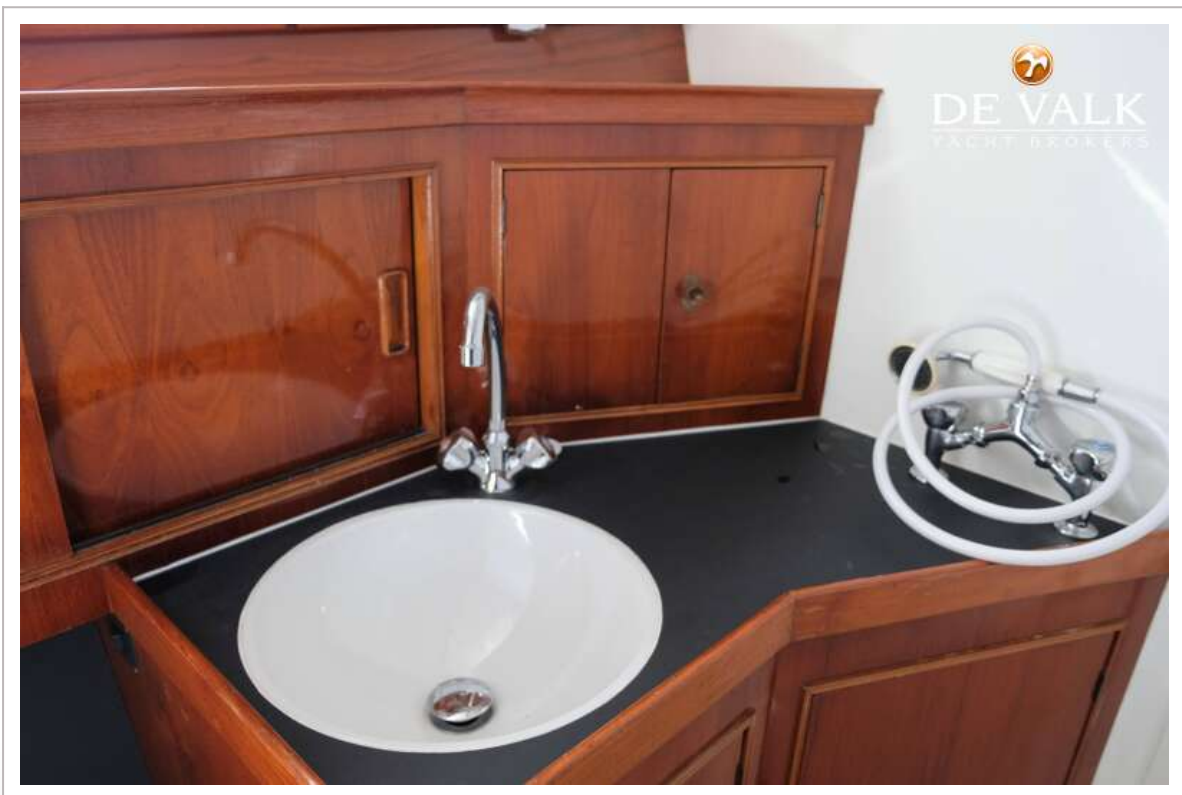
# NORDIA 45



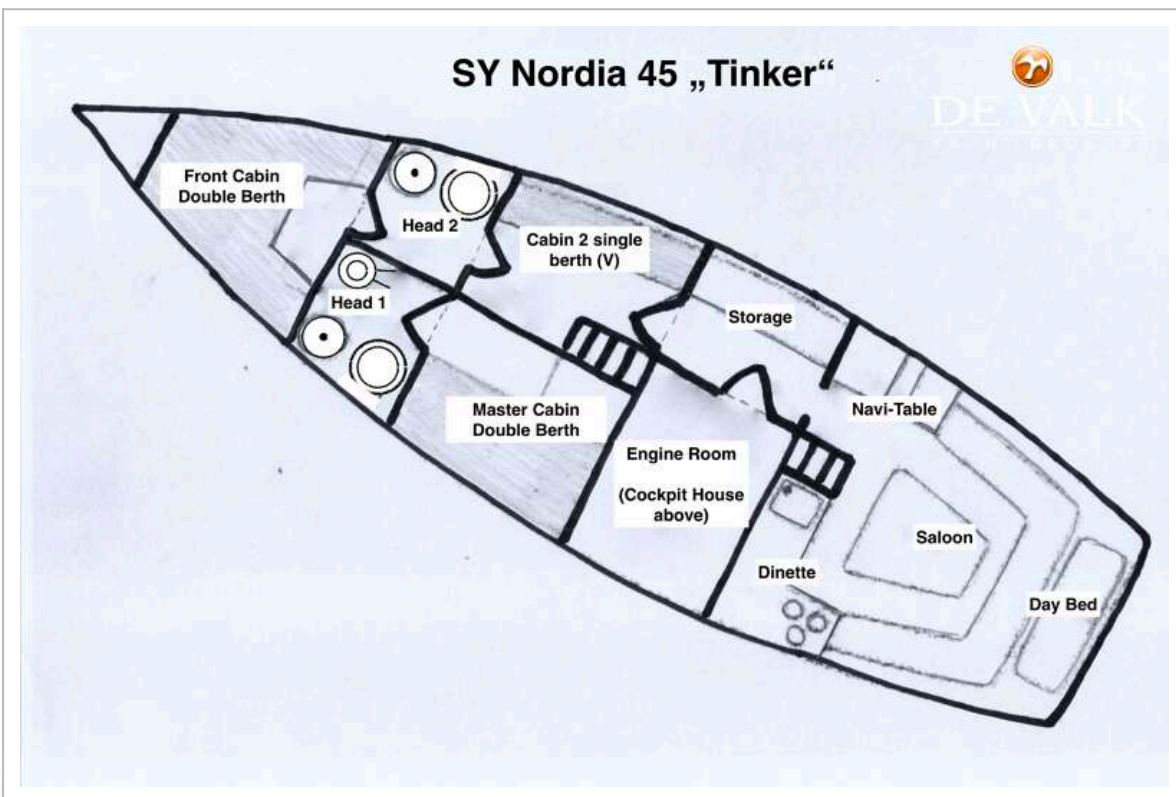
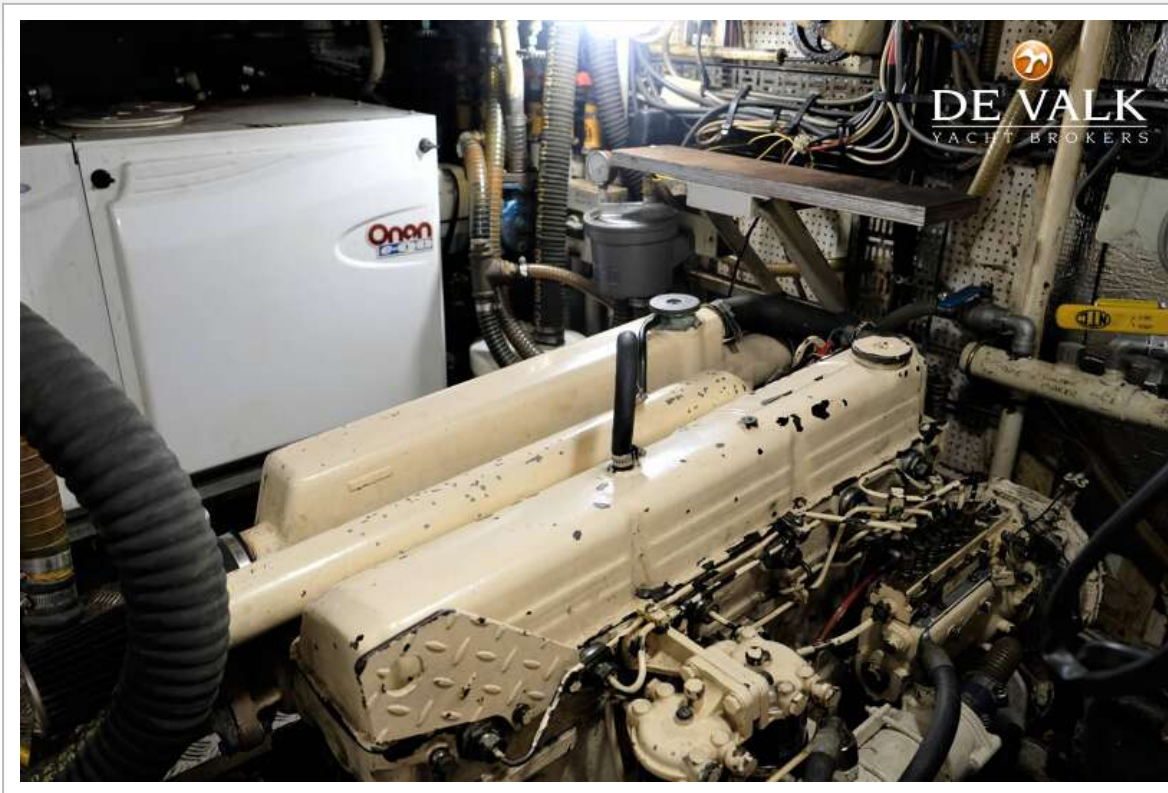
# NORDIA 45

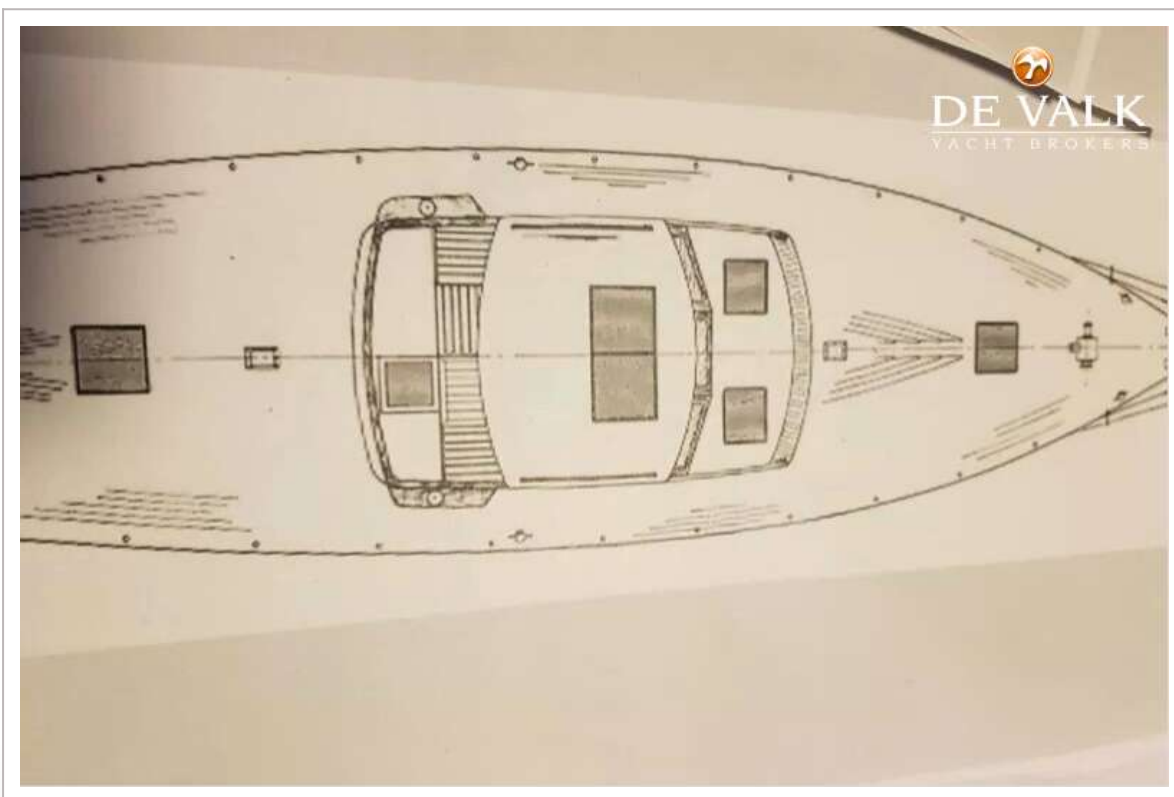
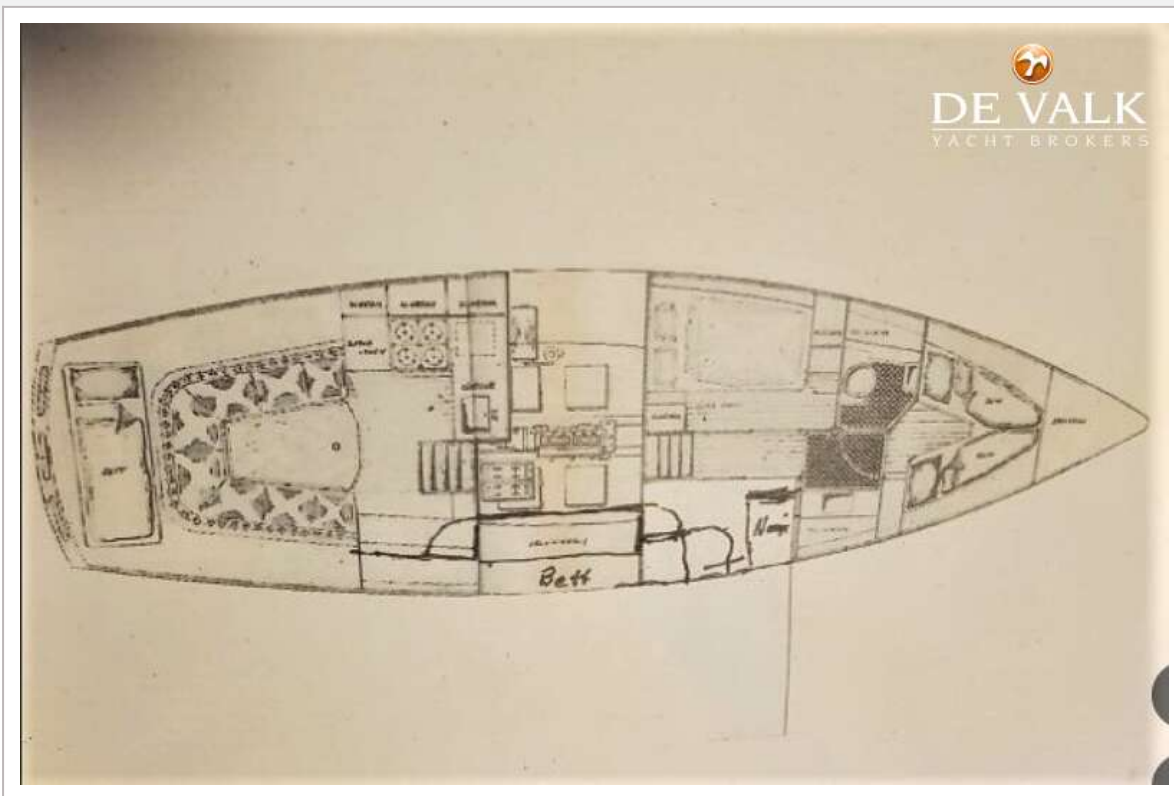


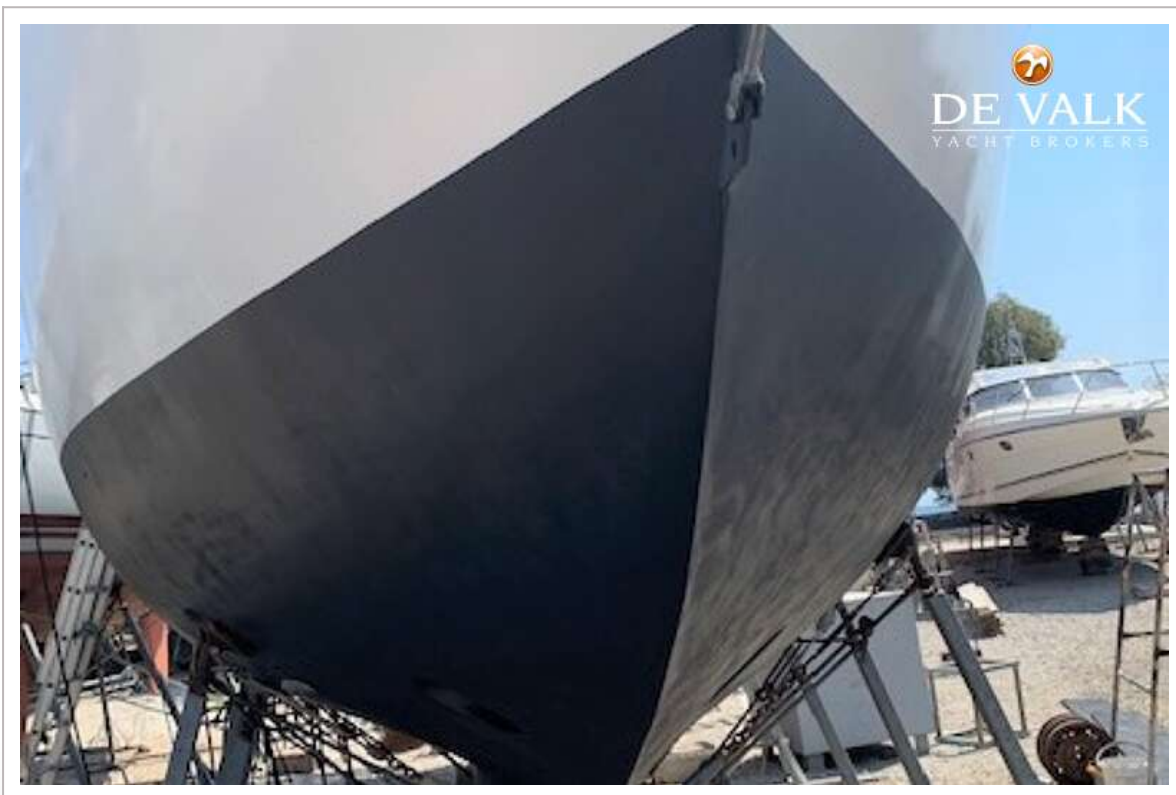
# NORDIA 45



# NORDIA 45







# NORDIA 45

