



DE VALK
YACHT BROKERS



MAGNUM MARINE 38



DE VALK
YACHT BROKERS

MAGNUM MARINE 38

BROKER'S COMMENTS

The Magnum 38 is a fast and fun open boat. It was designed by Dan Aronow and is 3 feet longer than the popular "Maltese", one of the first fast racing boats ever made. It is a very versatile boat; there are several versions of the Magnum 38, such as an open "fishing" cruiser or a cabin cruiser.

Hartmut Ross

SPECIFICATIONS

Dimensions	11.60 x 3.75 x 0.95 (m)	Builder	Magnum Marine
Built	1975	Cabins	1
Material	GRP	Berths	4
Engine(s)	2 x Mercruiser 8,2 L 502Magnum MK6 V	Hp/Kw	2 x 420.00 (hp), 309.12 (kw)
Asking price	on request (VAT Exempt)	Lying	contact Kiel

CONTACT

Sales office	De Valk Kiel	Telephone	+49 1712312133
Address	Hermann Rennerstrasse 12 22609 Hamburg DE	E-mail	kiel@devalk.nl

DISCLAIMER

These particulars are given in good faith as supplied but cannot be guaranteed.



GENERAL

Model	MAGNUM MARINE 38
Type	motor yacht
LOA (m)	11,60
Beam (m)	3,75
Draft (m)	0,95
Headroom (m)	1,85
Year built	1975
Launched	1975
Builder	Magnum Marine
Country	U.S.A.
Designer	Dan Aronow
Displacement (t)	12
Hull material	GRP
Hull colour	blue
Rubbing strake	stainless steel
Deck material	GRP
Deck finish	teak
Cockpit deck finish	teak
Antifouling (year)	2020
Window frame	aluminium
Window material	glass
Portholes	yes
Fuel tank (litre)	500
Fuel tank 2 (litre)	500
Level indicator (fuel tank)	yes
Freshwater tank (litre)	15
Wheel steering	yes
Inside helm position	yes

ACCOMMODATION



Cabins	1
Berths	4
Open cockpit	yes
Aft deck	yes
Saloon	yes
Headroom saloon (m)	1,85
Heating	Ebersbächer
Dinette to convert into berth	yes
Opening door to cockpit	yes
Galley	yes
Countertop	yes
Sink	yes
Cooker	electric
Fridge	New 2017
Hot water system	yes
Water pressure system	yes
Owners cabin	v-bed
Bed length (m)	2
Wardrobe	drawers and shelves
Bathroom	separate
Toilet	en suite
Toilet system	electric
Wash basin	yes
Shower	yes

MACHINERY

No of engines	2
Make	Mercruiser 8,2 L
Type	502Magnum MK6 V
HP	420
kW	309.12



Year installed	2016
Maximum speed (kn)	32
Engine hours	72/74
Drive	shaft
Gearbox	V-Getriebe ZF new 2016
Exhaust	yes
Propeller blades	3
Propeller shaft material	stainless steel
Electric bilge pump	3
Generator	Honda mobil
Start battery	2
Service battery	2
Battery monitor	2
Battery charger	Mastervolt new 2020
Inverter	2
Shorepower	with cable
Trimtabs	New 2016

NAVIGATION

Compass	yes
Depth sounder	yes
Log	GPS
VHF handheld	yes
Navigation lights	yes

EQUIPMENT

Cockpit cover	yes
Winter cover	yes
Bathing platform	yes
Boarding ladder	stainless steel
Deck shower	yes



Anchor	yes
Anchor chain	yes
Windlass	electrical
Lifebuoy	yes
Horn	electric
Fenders	yes
Mooring lines	yes
Spare parts	yes
Tools	yes
Fire extinguisher	New 2016
Auto extinguisher system	New 2016



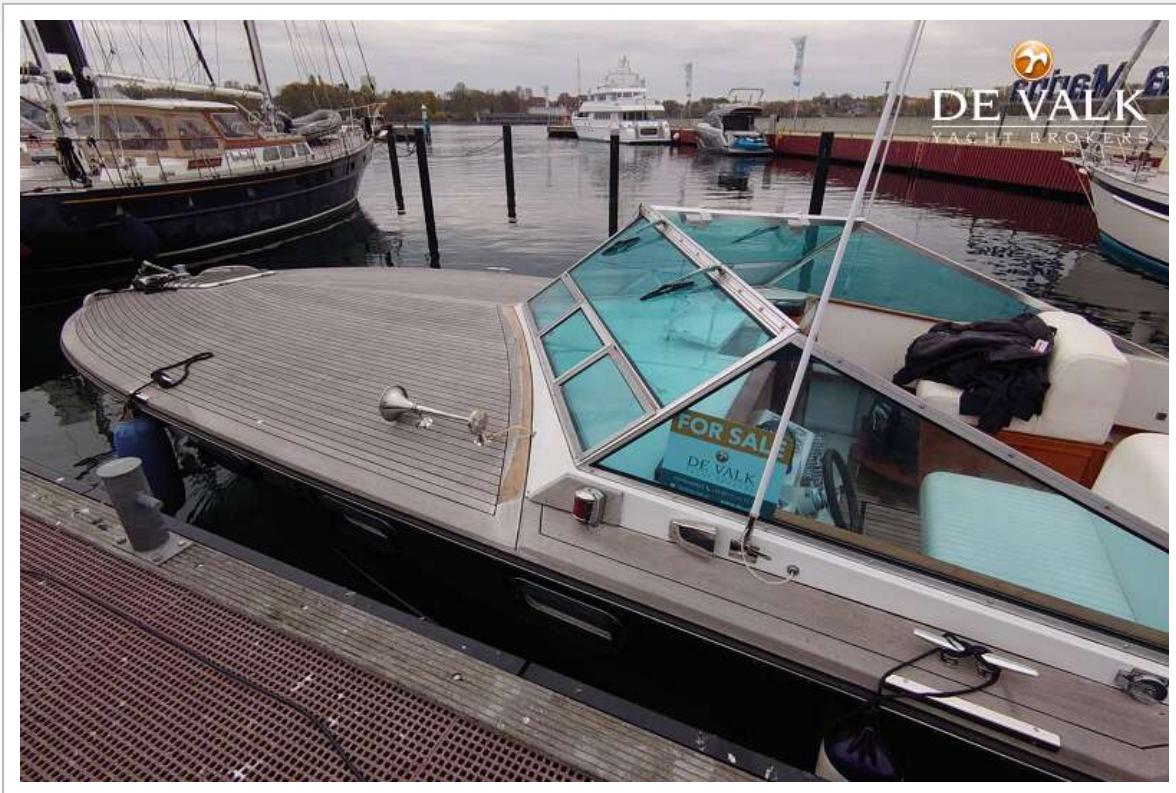
MAGNUM MARINE 38



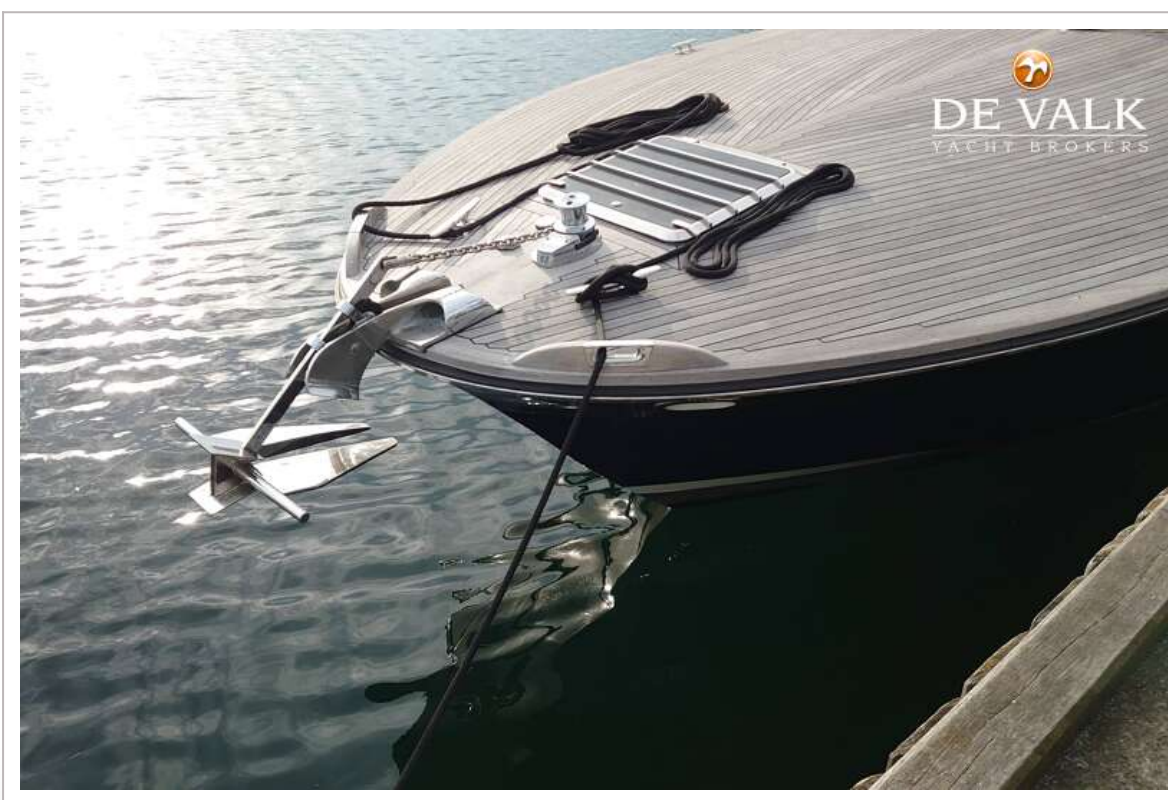
MAGNUM MARINE 38



MAGNUM MARINE 38



MAGNUM MARINE 38



MAGNUM MARINE 38



MAGNUM MARINE 38



MAGNUM MARINE 38



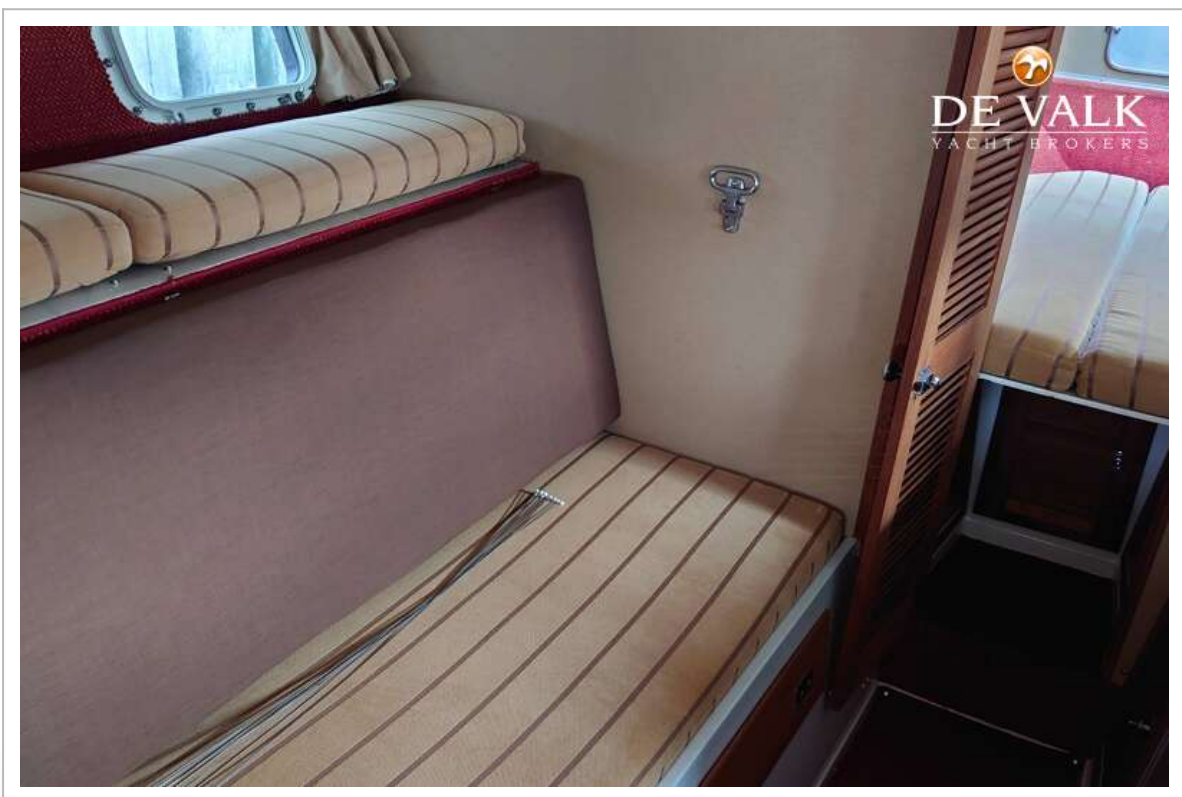


MAGNUM MARINE 38

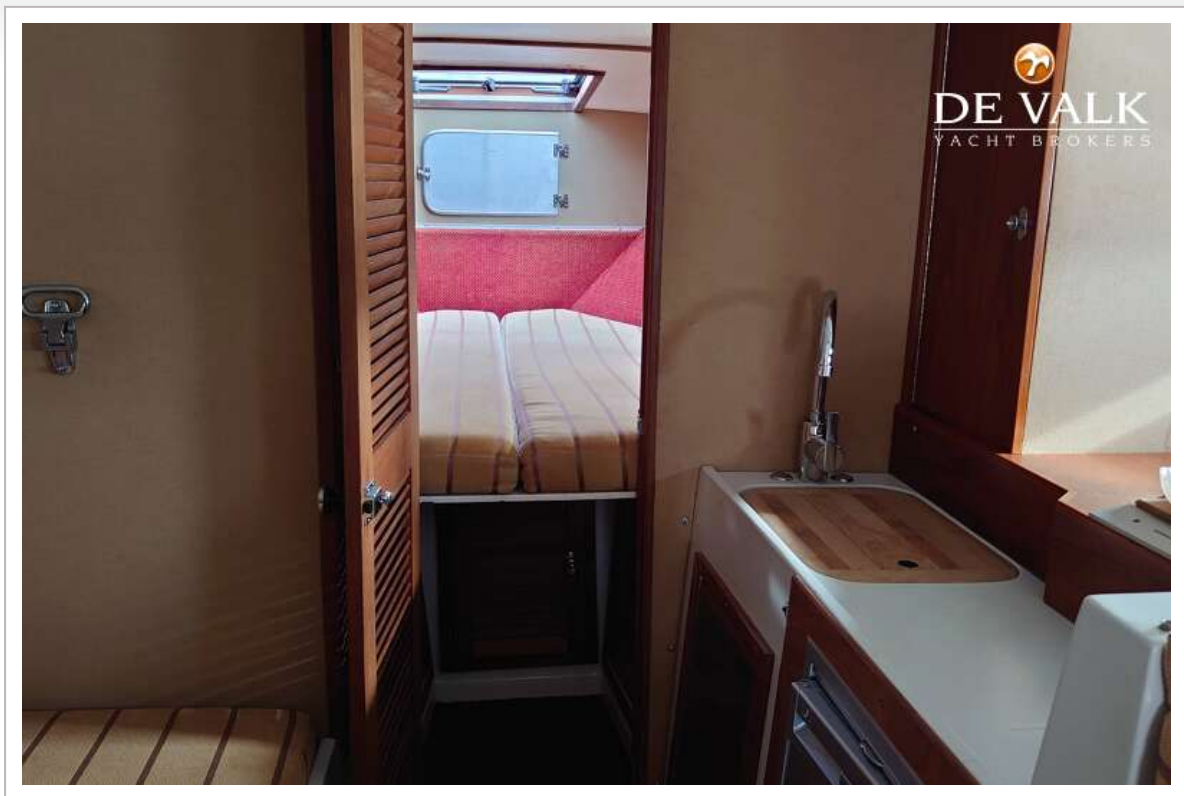


MAGNUM MARINE 38





MAGNUM MARINE 38



MAGNUM MARINE 38



