



HANSE 470E



# HANSE 470E

## BROKER'S COMMENTS

This Hanse 470E is labeled "Elite" for a more luxurious finish, "Epoxy" hull for added strength and reduced weight, and "Excellent" for improved sailing characteristics and performance in this version. Sails quickly and easily with a self-tacking jib and electric winches, making it easy to operate single-handed. She boasts a spacious and modern interior with three cabins, two bathrooms and plenty of natural light and ventilation. Generously equipped with a generator and air conditioning. Comfortable for long voyages or sporty sailing with family/friends. Private ownership only. Berthed Greece.

*Marc Weijenberg*

## SPECIFICATIONS

<b>Dimensions</b>	14.19 x 4.46 x 2.60 (m)	<b>Builder</b>	Hanse Yachts GmbH
<b>Built</b>	2008	<b>Cabins</b>	3
<b>Material</b>	GRP	<b>Berths</b>	6
<b>Engine(s)</b>	1 x Yanmar 4JH4AE diesel	<b>Hp/Kw</b>	54.00 (hp), 39.74 (kw)
<b>Asking price</b>	sold (VAT )	<b>Lying</b>	Greece

## CONTACT

<b>Sales office</b>	De Valk Thuishaven	<b>Telephone</b>	+31 35 5829042
<b>Address</b>	Peperstraat 7 1411 PX Naarden NL	<b>E-mail</b>	thuishaven@devalk.nl

## DISCLAIMER

These particulars are given in good faith as supplied but cannot be guaranteed.



## GENERAL

Model	HANSE 470E
Type	sailing yacht
LOA (m)	14,19
Beam (m)	4,46
Draft (m)	2,60
Air draft (m)	24,50
Headroom (m)	1,98
Year built	2008
Builder	Hanse Yachts GmbH
Country	Germany
Designer	Judel & Vrolijk
Displacement (t)	12,2
Ballast (tonnes)	lead 3,55
CE norm	A
Hull material	GRP
Hull colour	Light grey
Hull shape	round-bilged
Keel type	bulb keel
Superstructure material	epoxy
Deck material	epoxy
Deck finish	teak
Cockpit deck finish	teak
Window material	polycarbonate
Deckhatch	5 x Lewmar flush mounted (new seals 2023), new coachroof windows (2023)
Portholes	yes
Fuel tank (litre)	250
Freshwater tank (litre)	380
Blackwater tank (litre)	stainless steel 2 x 60
Blackwater tank extraction	deck extraction + pump
Wheel steering	mechanical 2 x Jefa + Carbon steeringwheels (+ covers)



<b>Emergency tiller</b>	yes
<b>Extra info</b>	Retractable mooring cleats. Spacious cockpit area and easy acces aft cockpit.
<b>Extra info</b>	Epoxy built hull with prepreg fiberglass fabrics vacuum bagged with Corecell foam, post cured. The bulkheads laminated to hull and deck. Semi balanced rudder with alloy shaft and self-aligning needle bearings.
<b>Extra info</b>	yes

## ACCOMMODATION

<b>Cabins</b>	3
<b>Berths</b>	6
<b>Interior</b>	mahogany
<b>Floor</b>	Delight Oak
<b>Saloon</b>	with L-shaped dinette and opposite sofa, new upholstery (2023)
<b>Headroom saloon (m)</b>	1,98
<b>Heating</b>	diesel ducted hot air Webasto
<b>Air-conditioning</b>	In 3 cabins (serviced 2021)
<b>Dinette</b>	yes
<b>Galley</b>	yes
<b>Countertop</b>	Black Quartz Corian
<b>Sink</b>	corian 2 x
<b>Cooker</b>	calor gas Techimpex (2023)
<b>Oven</b>	Techimpex (2023)
<b>Fridge</b>	Webasto 85 ltr (2022) + Isotherm 130 ltr (front and toploading fridges
<b>Hot water system</b>	220V + engine
<b>Water pressure system</b>	electrical
<b>Owners cabin</b>	double bed
<b>Bed length (m)</b>	2,00 x 1,50
<b>Wardrobe</b>	hanging/drawers/shelves
<b>Bathroom</b>	I



Toilet	en suite
Toilet system	manual (2022)
Wash basin	in the bathroom
Shower	en suite
Extra info	Recent luxe mattress (2021)
Guest cabin 1	double bed
Bed length (m)	2,00 x 1,50
Wardrobe	hanging and shelves
Bathroom	shared II
Toilet	shared
Toilet system	electric (2022)
Wash basin	in the bathroom
Shower	shared
Guest cabin 2	double bed
Bed length (m)	2,00 x 1,50
Wardrobe	hanging and shelves
Extra info	Vetus gas/Co2 detector (2024)

## MACHINERY

No of engines	1
Make	Yanmar
Type	4JH4AE
HP	54
kW	39.74
Fuel	diesel
Year installed	2008
Maximum speed (kn)	8
Cruising speed (kn)	7
Consumption (l/hr)	4
Engine hours	1150
Engine cooling system	freshwater heat exchanger



<b>Drive</b>	sail-drive
<b>Saildrive seal</b>	Yanmar Saildrive SD60 and seal new installed 2024.
<b>Engine controls</b>	bowden cable
<b>Gearbox</b>	mechanical
<b>Bowthruster</b>	electric Maxpower VIP150 (retractable) serviced 2023
<b>Exhaust</b>	watercooled
<b>Propeller type</b>	folding Flexofold 3-blade (+spare 2024)
<b>Shaft lubrication</b>	oilbath
<b>Manual bilge pump</b>	yes
<b>Electric bilge pump</b>	Jabsco
<b>Electrical installation</b>	12v/220v
<b>Generator</b>	wet exhaust Fisher Panda 80001 PMS (2015)
<b>Start battery</b>	2 x AGM (2023)
<b>Service battery</b>	4 x AGM (2023)
<b>Generator battery</b>	100ah (2024) with own seperate Victron battery charger (2024) and Dynaplate (2024)
<b>Bowthruster battery</b>	2 x Optima
<b>Battery charger</b>	Victron
<b>Solar panel</b>	2 x DAS Energy 180watt (2023) + 110ah battery and Victron regulator
<b>Shorepower</b>	with cable
<b>Insulation transformer</b>	Victron VDI-32 (2024)
<b>Extra info</b>	Extra water/fuel seperator installed

## NAVIGATION

<b>Compass</b>	yes
<b>Electric compass</b>	via autopilot
<b>Depth sounder</b>	Raymarine i70
<b>Log</b>	Raymarine i70
<b>Windset</b>	Raymarine i70
<b>Repeater</b>	Raymarine i70 at chart table
<b>VHF</b>	Simrad RT-650



VHF handheld	yes
Autopilot	Raymarine i70/ST2000
Plotter/GPS	Raymarine E95 Hybrid Touch
Electronic chart(s)	yes
AIS transponder	Raymarine AIS650 Class B
Navigation lights	yes
Extra info	Airmar transducer/multi sensor (2024)

## EQUIPMENT

Sprayhood	(2023)
Bimini	(2023)
Sun awning	for coachroof and cockpit ((2023)
Winter cover	Sun protection cover for the whole deck.
Cockpit cushions	yes
Cockpit table	plus cover
Bathing platform	fold-down type
Boarding ladder	stainless steel
Gangway	(folding)
Deck shower	hot & cold
Anchor	Delta 25kg plus bow-cover
Anchor chain	60 mtr (12mm) + line
Windlass	electrical Lewmar (2019)
Outboard support	Davit (2023)
Davits	stainless steel (2021)
Davits controls	manual
Sea railing	wire
Grab rail (superstructure)	stainless steel
Railing side opening gates	2 x
Pushpit	stainless steel
Pulpit	stainless steel
Life raft	container Ocean Safety



Life raft (pers)	8
Last life raft survey	08-2021
Lifejackets	2 x Kru XF + harness
Lifebuoy	1 x
Safety lines on deck	yes
Radar reflector	Echomax (passive)
Fenders	yes
Mooring lines	yes
Spare parts	for engine, toilets
TV	Samsung
Radio	Fusion AV650 system
Cockpit speakers	yes
Fire extinguisher	(2022)
Extra info	Underwater lighting (blue)

## RIGGING

Rigging	fractional
Standing rigging	Dyform 2009 (last survey 2021)
Brand mast	Sparcraft
Material mast	aluminium
Spreaders	tapered mast with 3 set spreaders
Keel stepped mast	yes
Mainsail	North Sails 3DI Racing fully battened (as spare)
Mainsail cover	Maindrop system with Lazy Jacks (2023)
Battcars	Harken with battencars replaced in 2024
Fully battened mainsail	UK Sails X-drive, double sided Tafetta (2024)
Jib	North Sails 3DI Racing (self-tacking)
Genoa	UK Sails X-drive 105%, double sided Tafetta (2024)
Genoa furler	Facnor
Genoa cover	yes
Gennaker	North Sails with rocon





<b>Self tacking jib installation</b>	yes
<b>Reefing System</b>	slabreefing
<b>Backstay adjuster</b>	hydraulic
<b>Boomvang</b>	mechanical and tackle Rodkicker
<b>Secondary sheet winch</b>	2 x Lewmar 46ST
<b>Multifunctional winches</b>	2 x Lewmar 54EST (electric)
<b>Extra info</b>	Led lighting in mast and boom
<b>Extra info</b>	Up-to-date running rigging with various Spectra/Dyneema sheets/halyards 2023/2024. North Sails serviced 2023.



# HANSE 470E



# HANSE 470E





# HANSE 470E



# HANSE 470E





# HANSE 470E

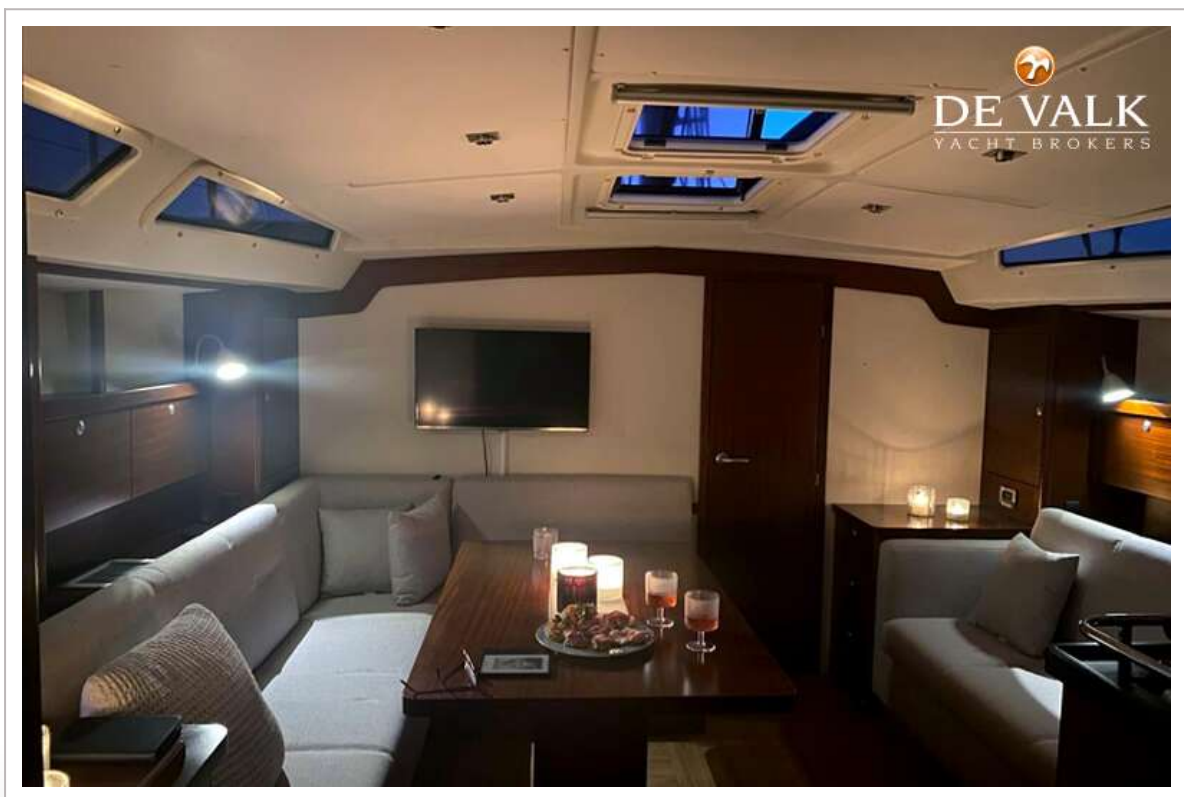


# HANSE 470E





# HANSE 470E

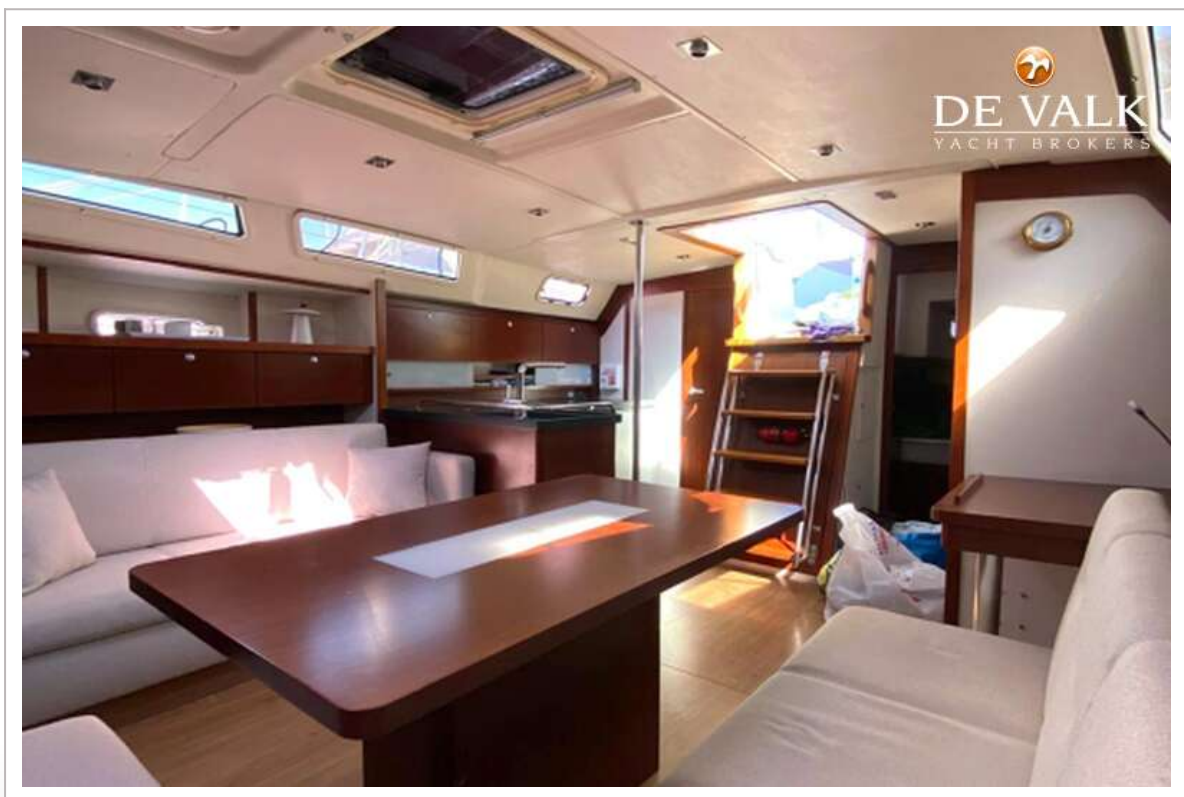




# HANSE 470E



# HANSE 470E



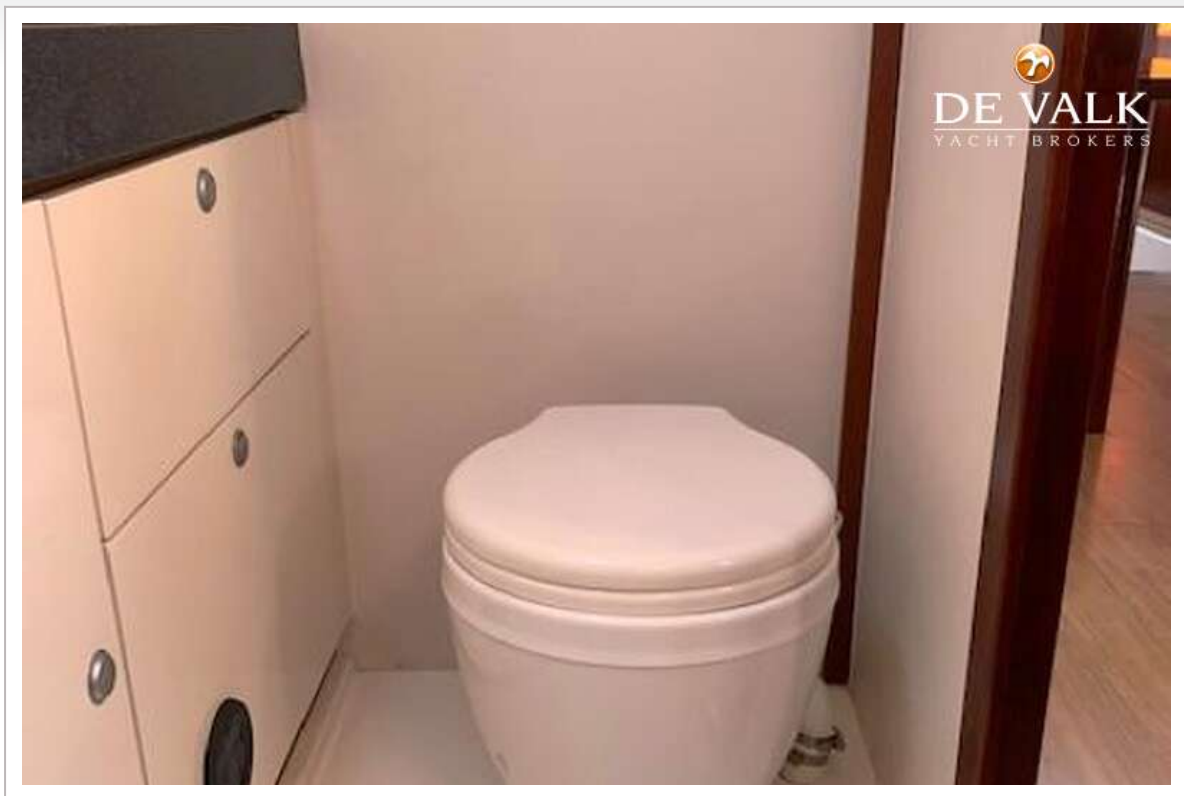


# HANSE 470E



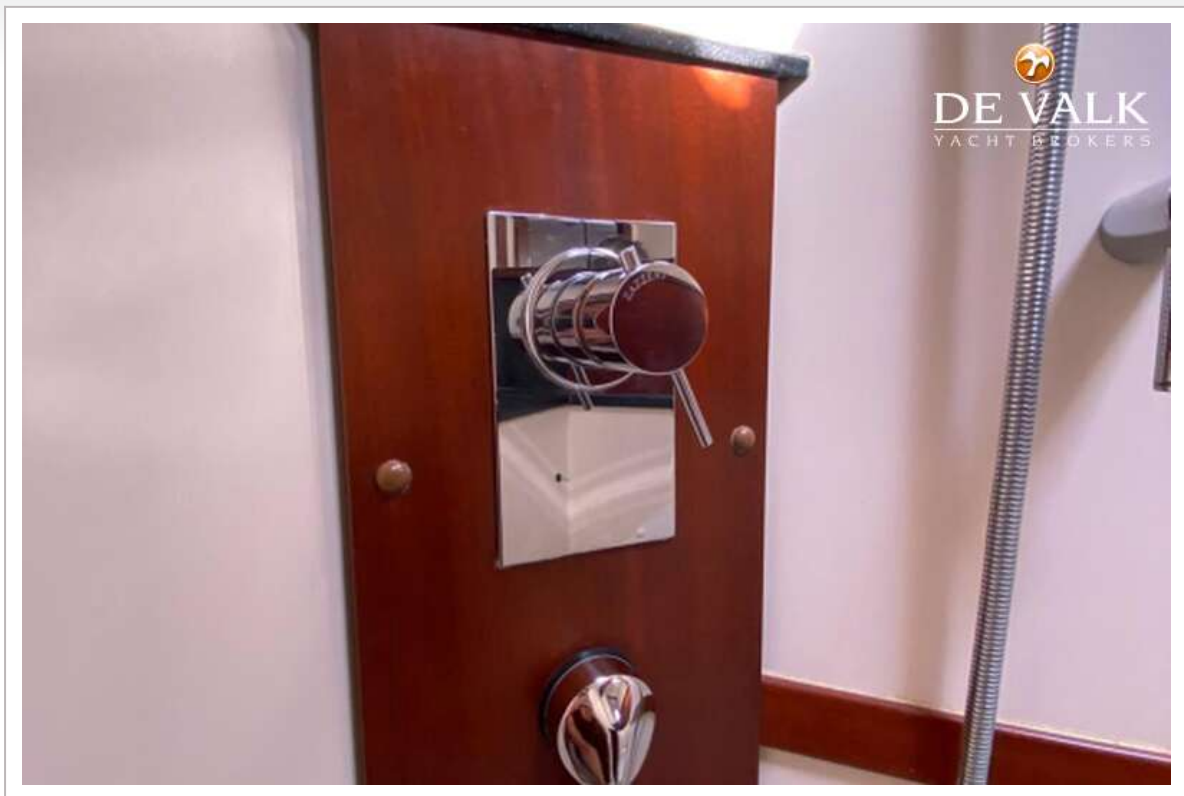
# HANSE 470E



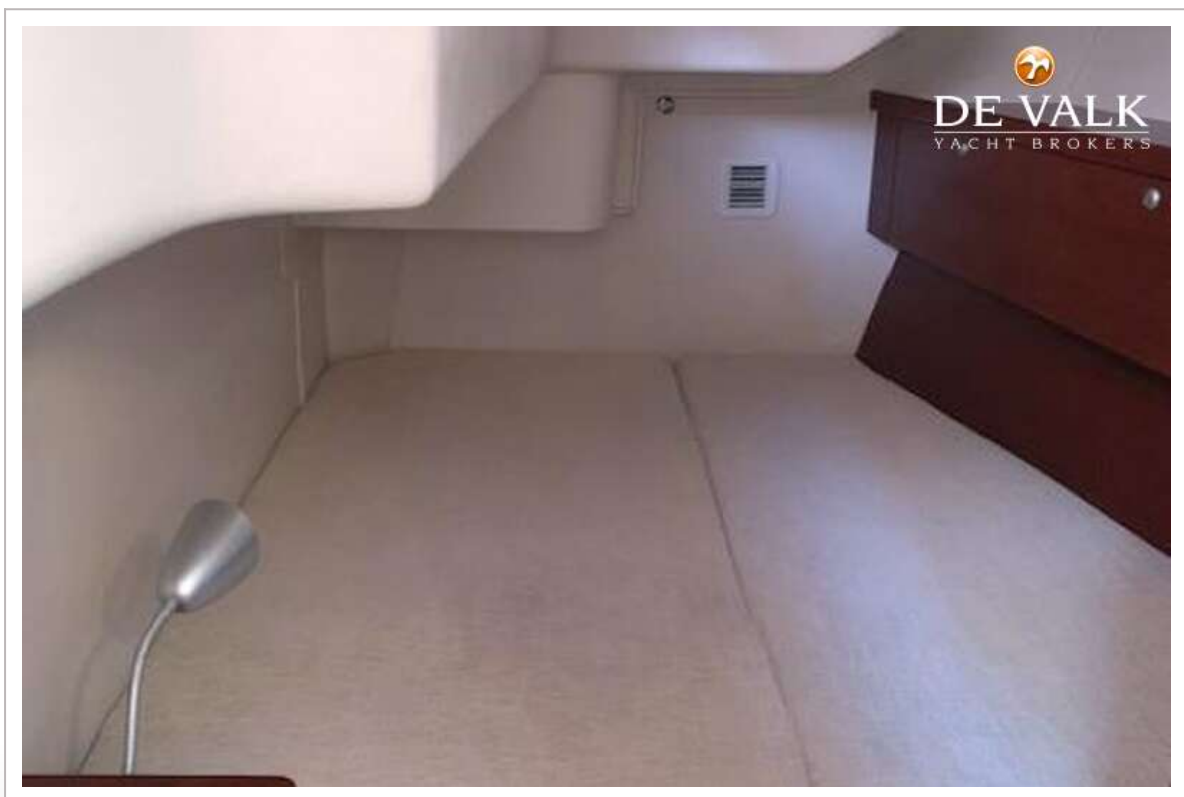
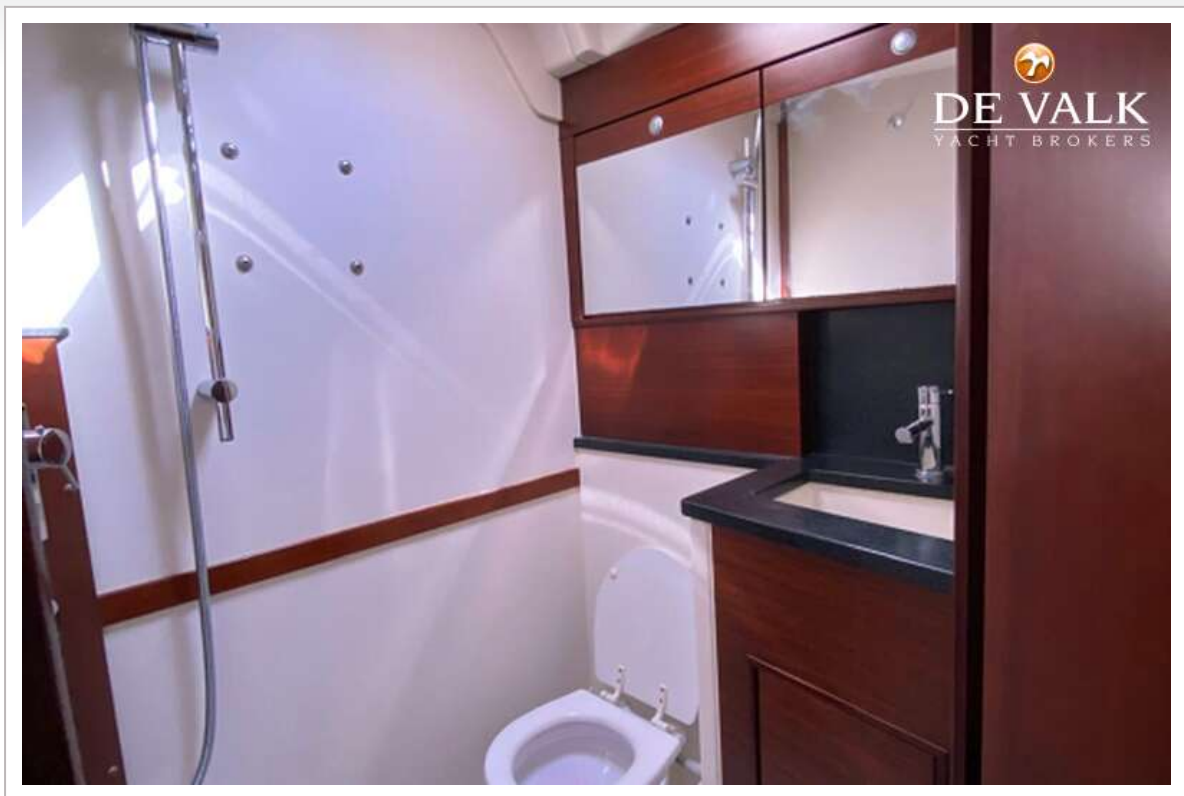




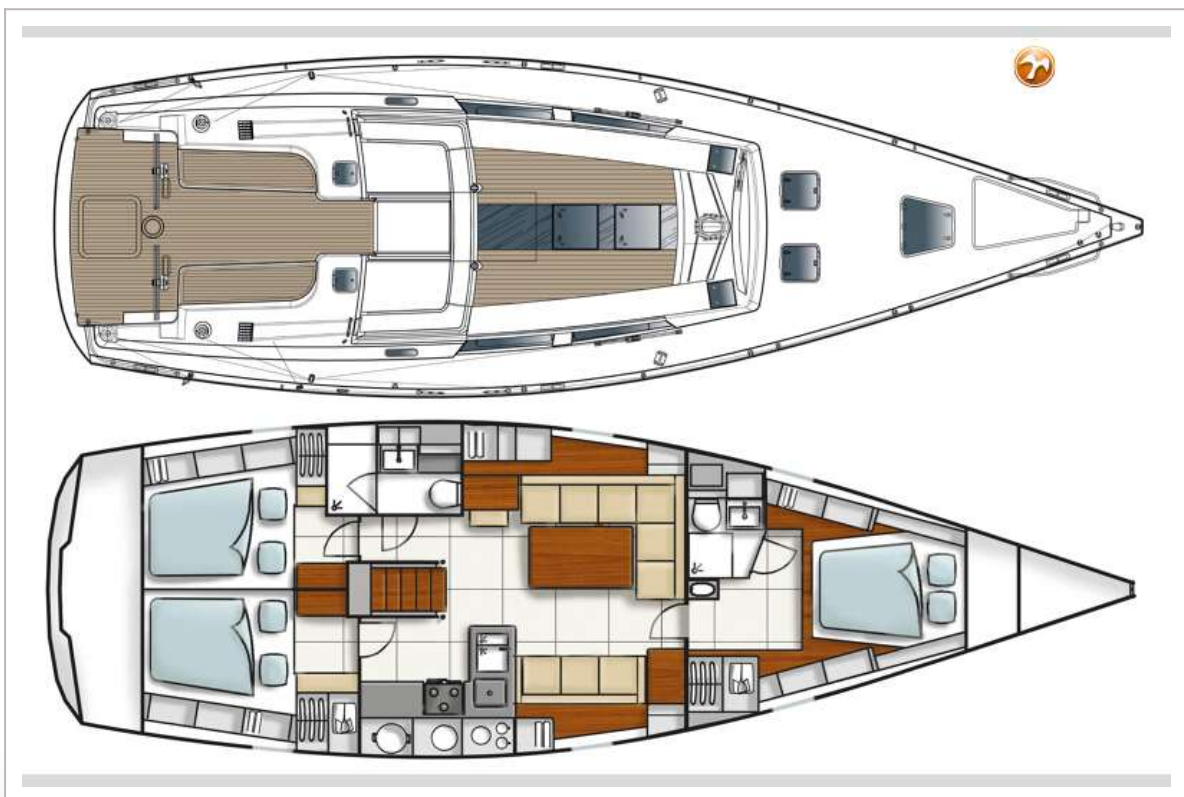
# HANSE 470E



# HANSE 470E

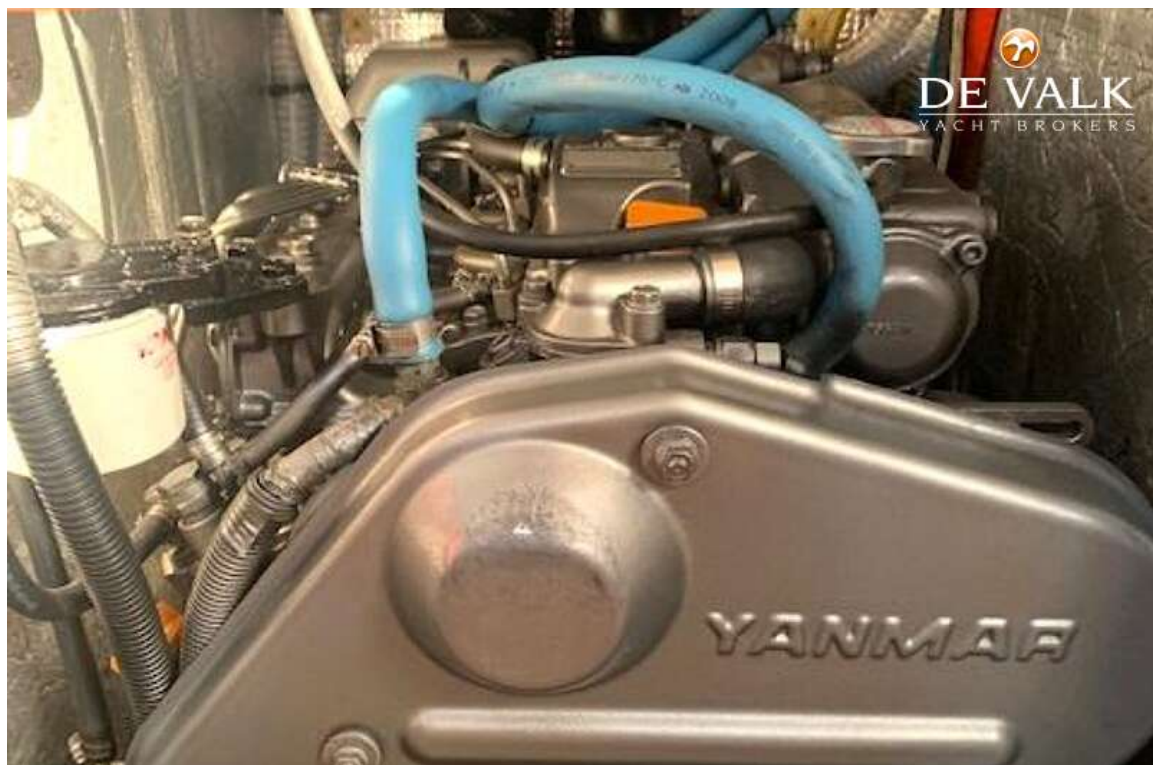


# HANSE 470E





# HANSE 470E



# HANSE 470E

