



DE VALK
YACHT BROKERS



FALLAATSTER 1400 DECKSALOON KOTTER



DE VALK
YACHT BROKERS

FALLAATSTER 1400 DECKSALOON KOTTER

BROKER'S COMMENTS

Inspired by the 1920 designs of Dutch cruisers, renowned shipbuilder Van der Werff took that inspiration and built this 14 mtr Decksalon Cutter. With 300 years experience in building cargo vessels like "skutsje or Fallaatster" it came only natural to the yard to go with that name. Both the pilothouse and deck salon dominate the layout, so very suitable for longer stays onboard including a large bathroom, owner- and guest cabin. Wide decks, large open cockpit, fly-bridge and deck area with easy access, double glazing and central heating wrap up this vintage style European canal cruising yacht.

Marc Weijenberg

SPECIFICATIONS

Dimensions	14.05 x 4.45 x 1.12 (m)	Builder	Scheepsbouw O.H. vd Werff & owner
Built	2022	Cabins	2
Material	Steel	Berths	4
Engine(s)	1 x Mitsubishi S6S DT 10 diesel	Hp/Kw	100.00 (hp), 73.60 (kw)
Asking price	€ 390.000 (VAT Paid)	Lying	The Netherlands

CONTACT

Sales office	De Valk Thuishaven	Telephone	+31 35 5829042
Address	Marinaweg 8 (postal address) 1361 AC Almere NL	E-mail	thuishaven@devalk.nl

DISCLAIMER

These particulars are given in good faith as supplied but cannot be guaranteed.



FALLAATSTER 1400 DECKSALOON KOTTER

GENERAL

Model	FALLAATSTER 1400 DECKSALOON KOTTER
Type	motor yacht
LOA (m)	14,05
Beam (m)	4,45
Draft (m)	1,12
Air draft min (m)	3,20
Headroom (m)	2,00
Year built	2022
Builder	Scheepsbouw O.H. vd Werff & owner
Country	The Netherlands
Designer	Jan Visser Yachtdesign
Displacement (t)	16
Hull material	steel
Hull colour	grey
Hull shape	round-bilged
Keel type	long keel
Bilge keels	2 x
Superstructure material	steel 4 mm
Rubbing strake	stainless steel
Deck material	steel 4 mm
Deck finish	non-skid paint
Cockpit deck finish	non-skid paint
Window frame	aluminium Omru
Window material	double glazing
Deckhatch	1 x
Portholes	aluminium
Insulation	foam
Flybridge	yes
Mast can be lowered	manual
Fuel tank (litre)	steel 2 x 300



FALLAATSTER 1400 DECKSALOON KOTTER

Freshwater tank (litre)	polyethylene 1 x 600
Blackwater tank (litre)	polyethylene 2 x
Blackwater tank extraction	deck extraction + pump
Inside helm position	hydraulic
Outside helm position	hydraulic
More info on paintwork	DD IJssel (2-comp)
Extra info	2 x Sliding door (with mosquito-screen) in pilothouse, mosquito screen-door to cockpit, mosquito screens for deckhatch and portholes.
Extra info	Big lazarette/storage space under the cockpit floor
Extra info	Steel construction was completed in 2013 and finished and commissioned by her owner in 2022.

ACCOMMODATION

Cabins	2
Berths	4
Floor	woodprint
Open cockpit	yes
Headroom saloon (m)	2,02 - 1,98
Heating	central hot water Post Smartline 7 (8kW)
Dinette	yes
Opening door to cockpit	with mosquito-screen
Countertop	granite
Sink	stainless steel
Cooker	calor gas 5 burner
Extractor	Dometic
Microwave/oven combi	Inventum (220v)
Fridge	Isotherm (24v)
Freezer	seperate
Hot water system	220V + engine 40 ltr
Water pressure system	yes
Crockery	yes



FALLAATSTER 1 400 DECKSALOON KOTTER

Owners cabin	v-bed
Bed length (m)	2,00 x 0,85 mtr, headroom 2,00 mtr
Bathroom	I
Toilet	separate 1 x
Toilet system	electric
Wash basin	in the bathroom
Shower	separate 1 x
Guest cabin 1	double bed
Bed length (m)	1,80 x 1,30 mtr
Toilet	separate
Toilet system	electric
Washing machine	Candy (220v)

MACHINERY

No of engines	1
Make	Mitsubishi
Type	S6S DT 10
HP	100
kW	73.60
Fuel	diesel
Year installed	2021
Cruising speed (kn)	7
Consumption (l/hr)	4
Engine hours	600
Engine cooling system	freshwater heat exchanger
Drive	shaft
Engine controls	bowden cable
Gearbox	hydraulic ZF45M
Bowthruster	electric Craftsman 24v 150kgf
Sternthruster	electric Craftsman 24v 80kgf
Exhaust	watercooled



FALLAATSTER 1400 DECKSALOON KOTTER

Thrust bearing	Python Drive P110
Propeller type	fixed
Propeller blades	4
Propeller shaft material	steel
Shaft lubrication	water
Electric bilge pump	1 x 24v / 1 x 220v
Electrical installation	24v/220v
Start battery	2 x (2022)
Service battery	4 x 220ah (2022)
Battery charger	Victron 24v/35amp
Battery charger/inverter	Victron Multipluss 24v/3000watt/70amp
Solar panel	2 x 300wp plus controller
Shorepower	with cable

NAVIGATION

Depth sounder	yes
VHF handheld	1 x
Navigation lights	yes

EQUIPMENT

Cockpit cover	semi-open for wind and rain protection
Bimini	yes
Winter cover	partial cover for aft section of the yacht
Cockpit table	yes
Cockpit chairs	yes
Bathing platform	yes
Boarding ladder	stainless steel
Transom door	yes
Anchor	Pool
Anchor chain	40 mtr
Anchor 2	Plus line



FALLAATSTER 1 400 DECKSALOON KOTTER

Windlass	electrical Maxwell (24v)
Deck wash	yes
Davits	yes
Davits controls	manual
Sea railing	stainless steel
Grab rail (superstructure)	yes
Railing side opening gates	2 x with side boardingladder
Pulpit	yes
Wiper	3 x
Horn	electric
Fenders	yes
Mooring lines	yes
Spare parts	yes
Tools	yes
TV	yes
Radio	yes
Fire extinguisher	1 x
Extinguisher in engine room	1 x



FALLAATSTER 1400 DECKSALOON KOTTER



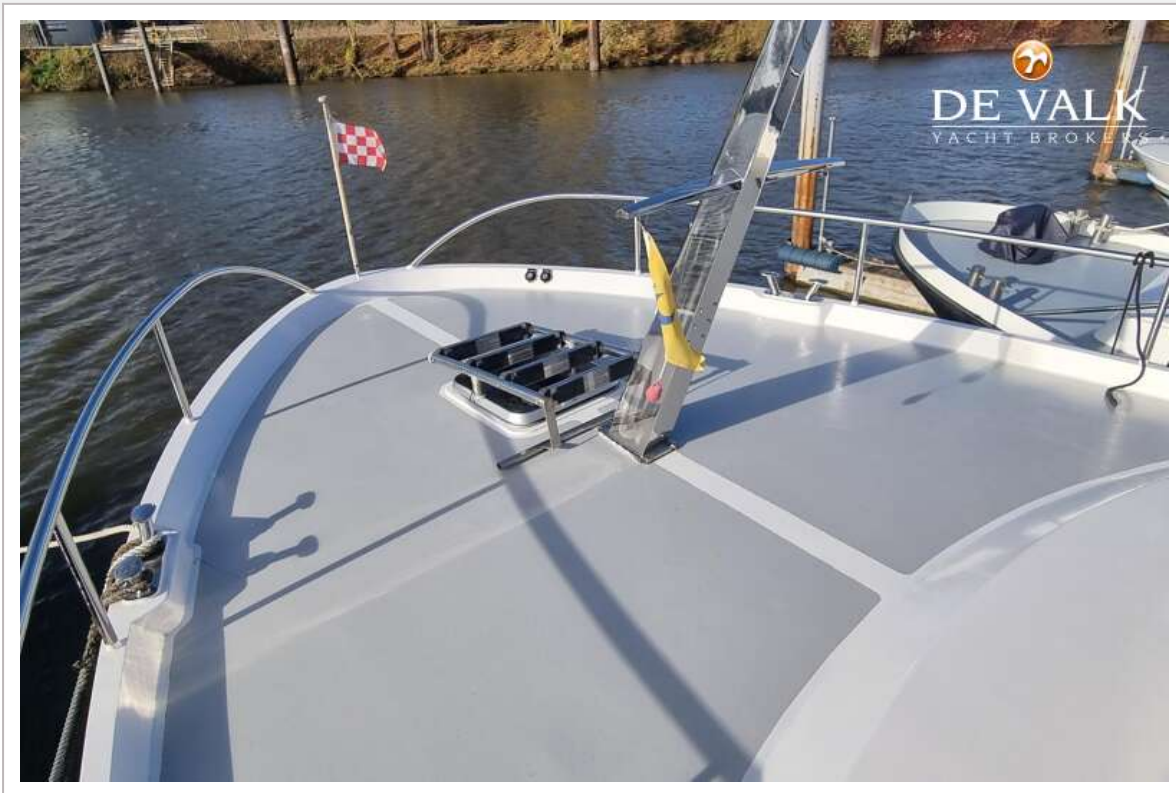
FALLAATSTER 1400 DECKSALOON KOTTER



FALLAATSTER 1400 DECKSALOON KOTTER



FALLAATSTER 1400 DECKSALOON KOTTER



FALLAATSTER 1400 DECKSALOON KOTTER



FALLAATSTER 1400 DECKSALOON KOTTER



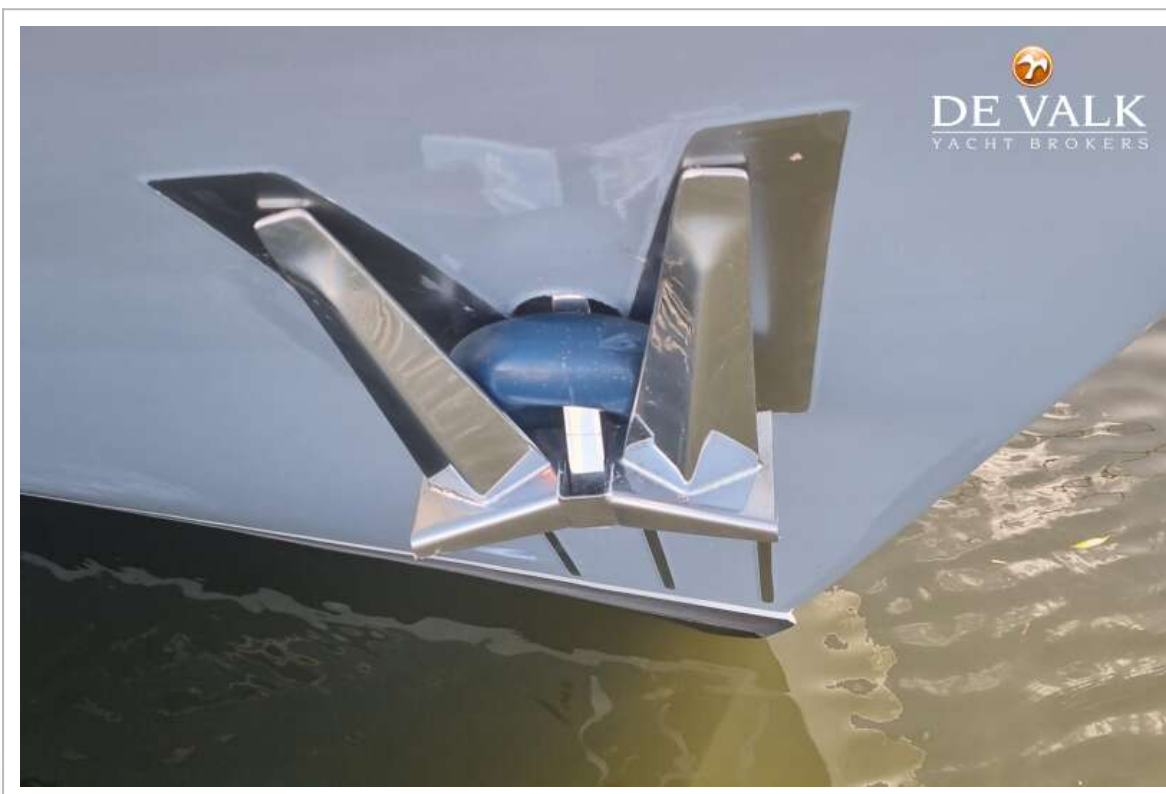
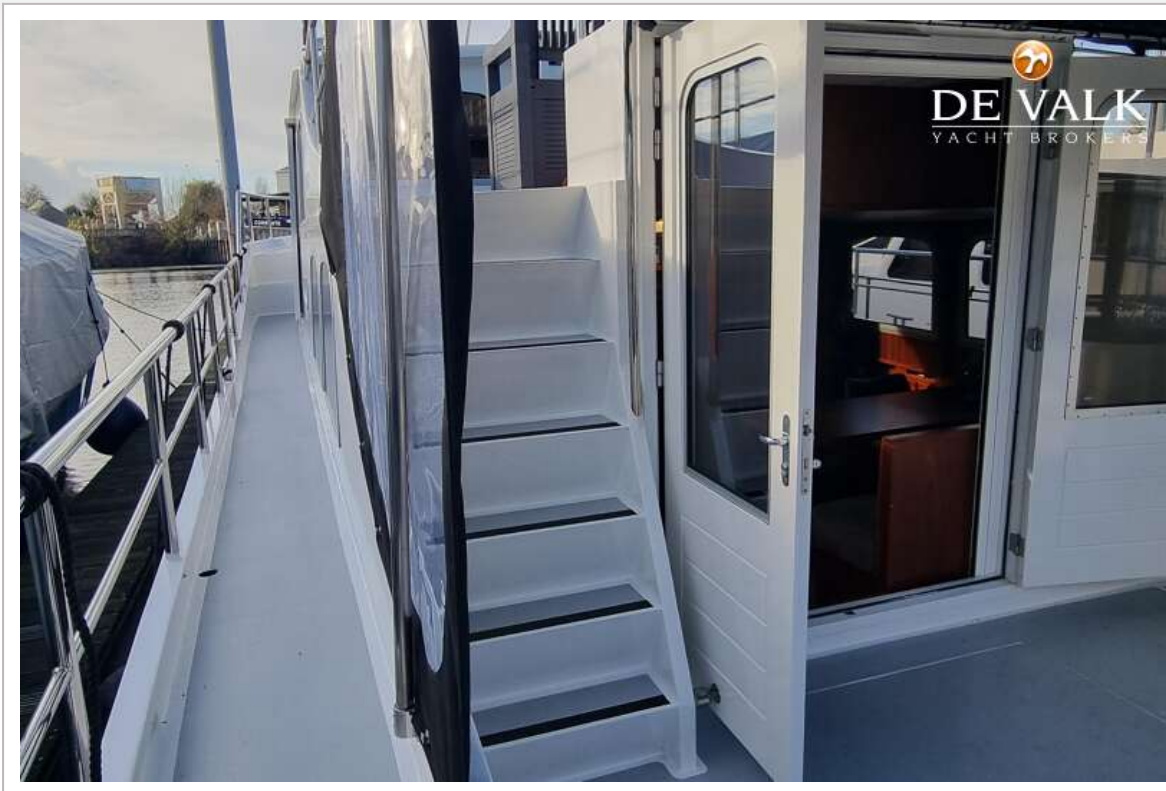
FALLAATSTER 1400 DECKSALOON KOTTER



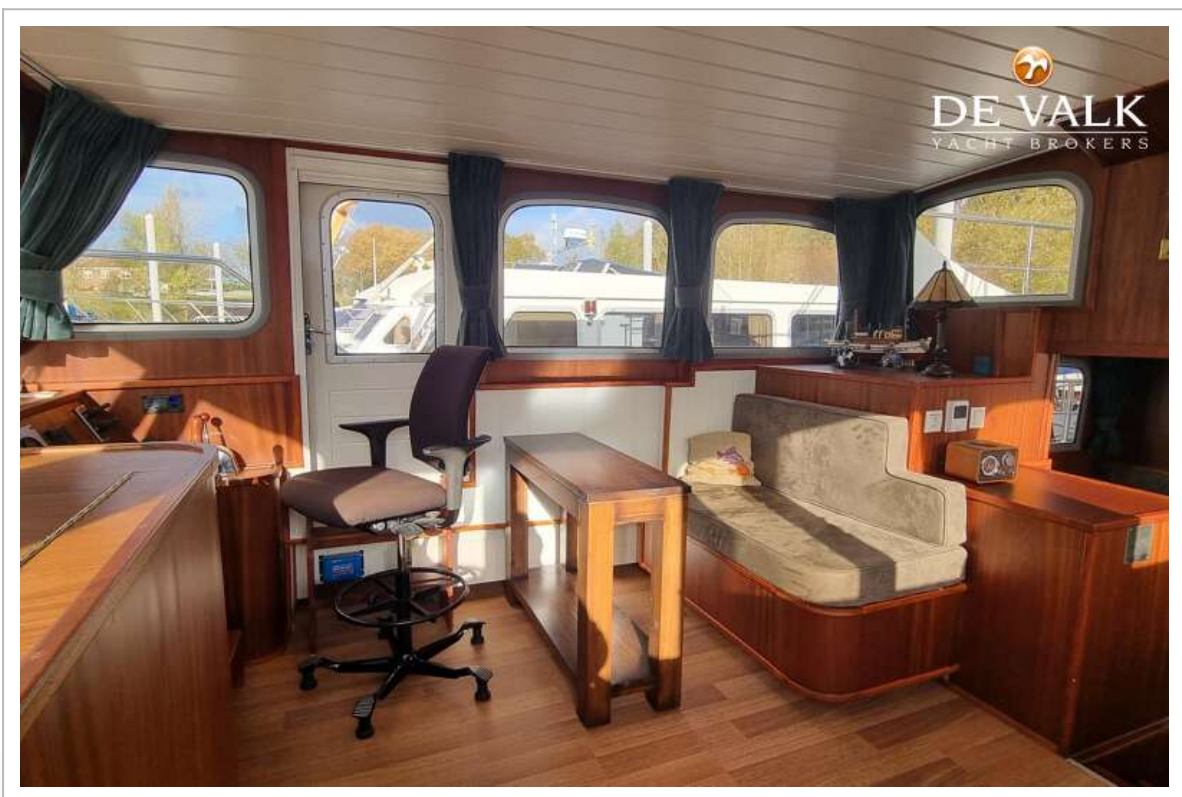
FALLAATSTER 1400 DECKSALOON KOTTER



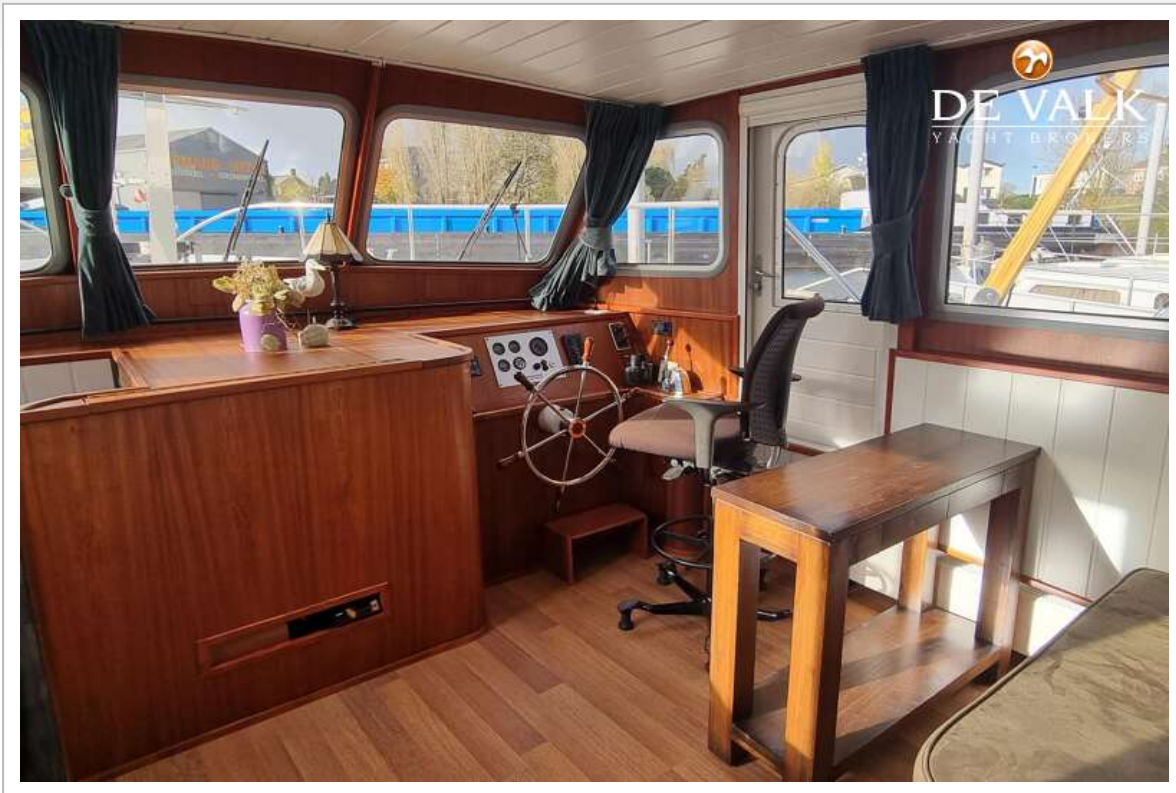
FALLAATSTER 1400 DECKSALOON KOTTER



FALLAATSTER 1400 DECKSALOON KOTTER



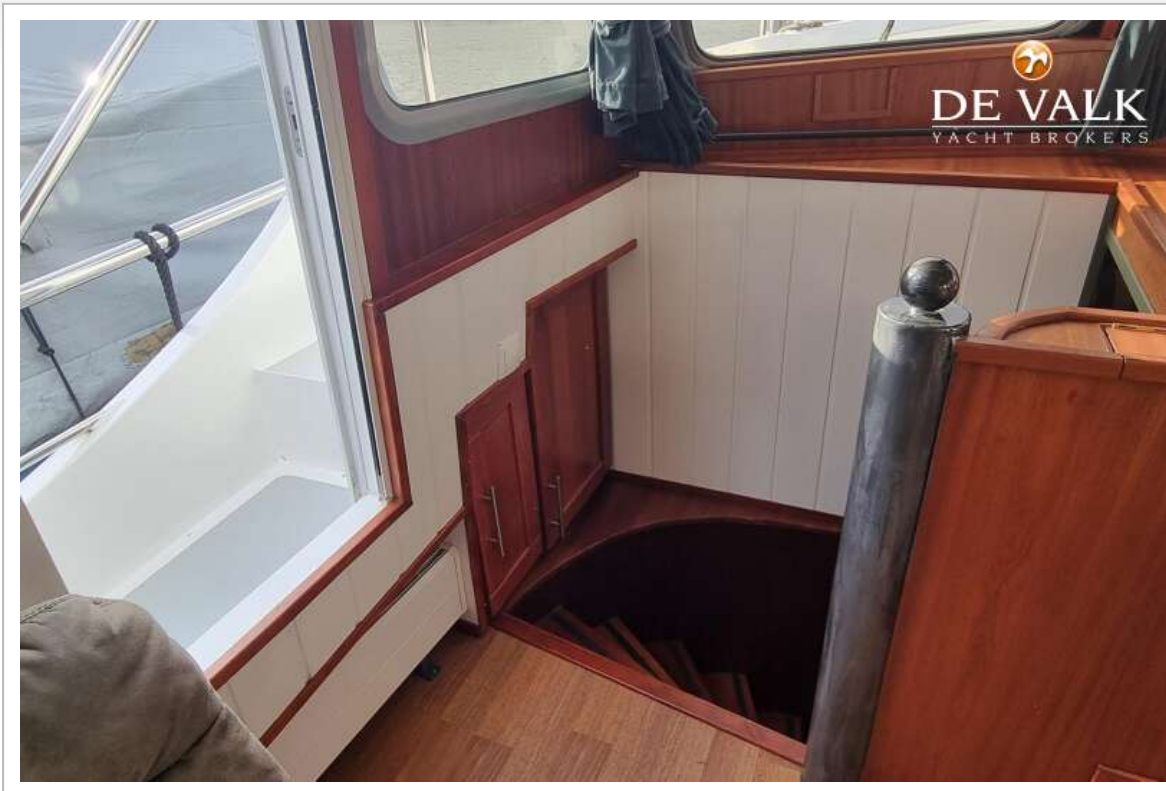
FALLAATSTER 1400 DECKSALOON KOTTER



FALLAATSTER 1400 DECKSALOON KOTTER



FALLAATSTER 1400 DECKSALOON KOTTER



FALLAATSTER 1400 DECKSALOON KOTTER



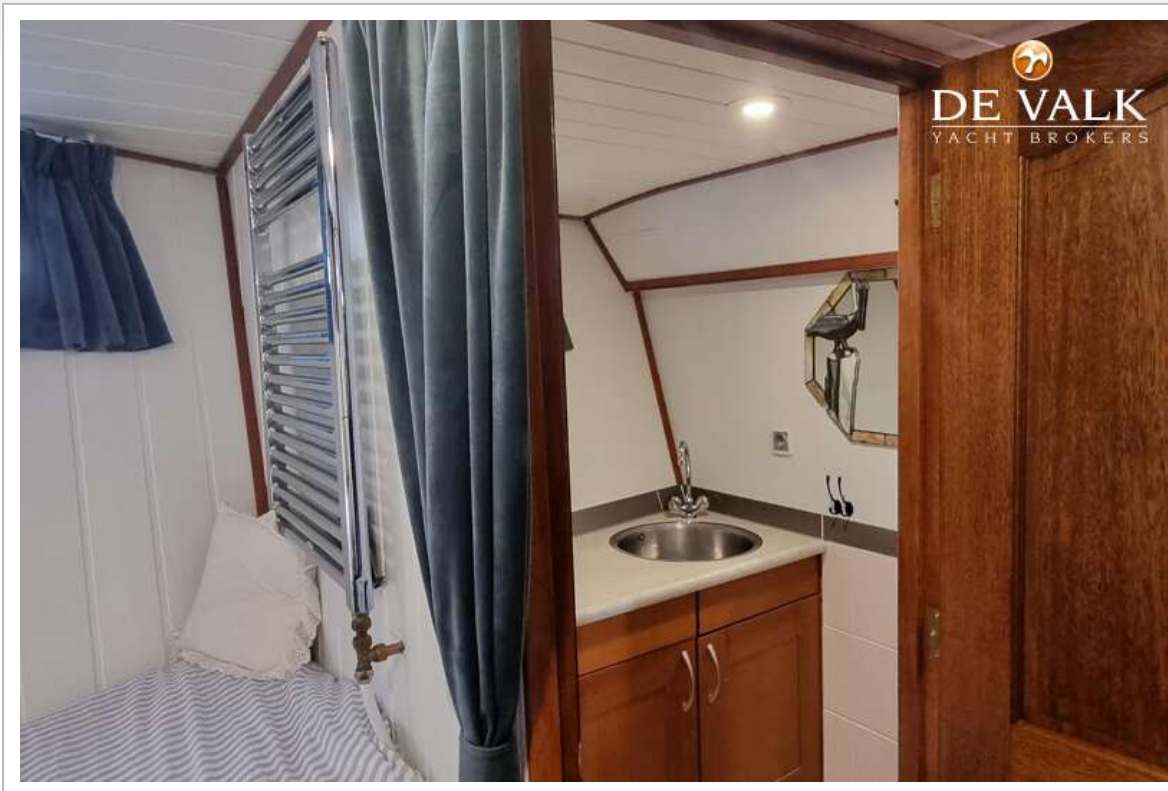
FALLAATSTER 1400 DECKSALOON KOTTER



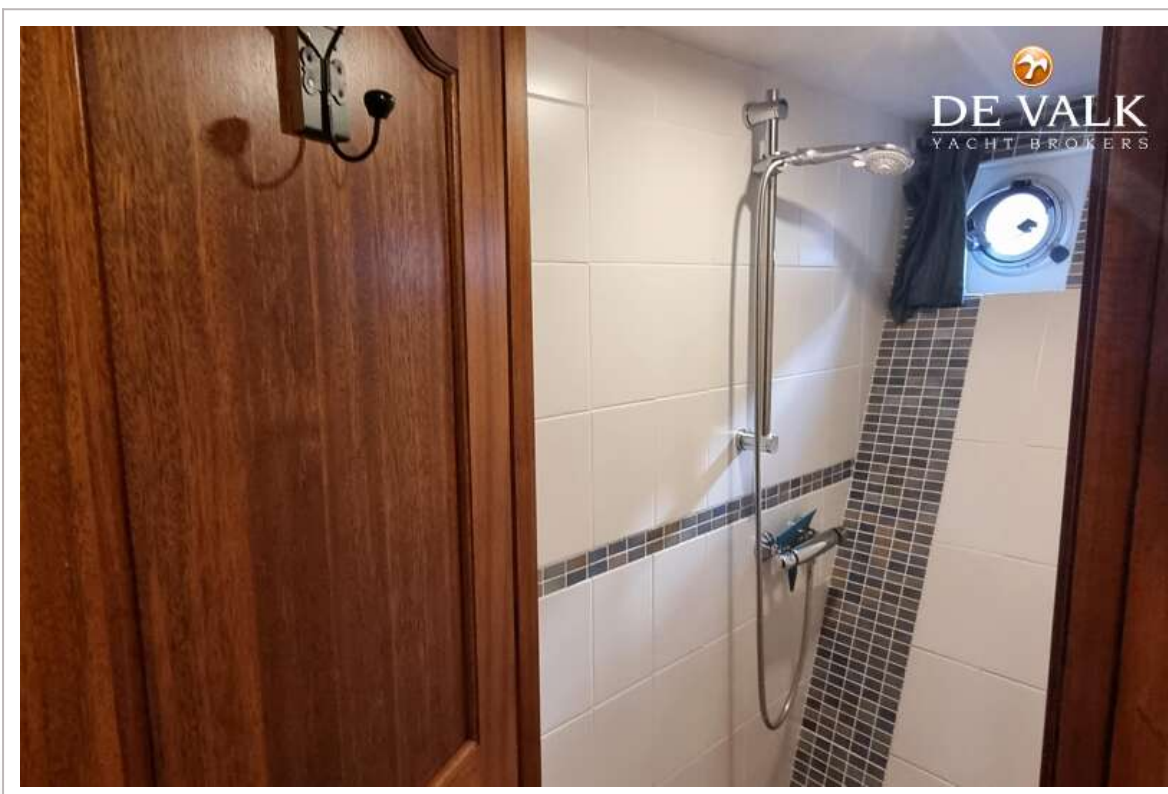
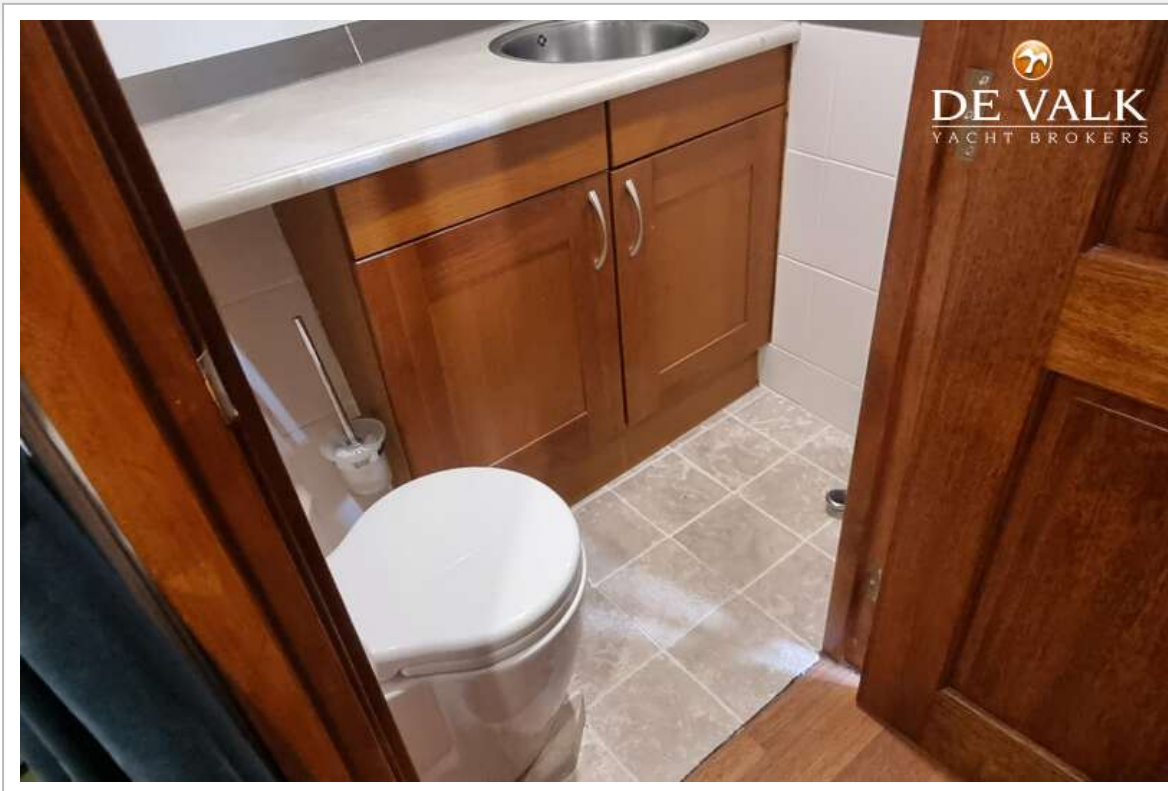
FALLAATSTER 1400 DECKSALOON KOTTER



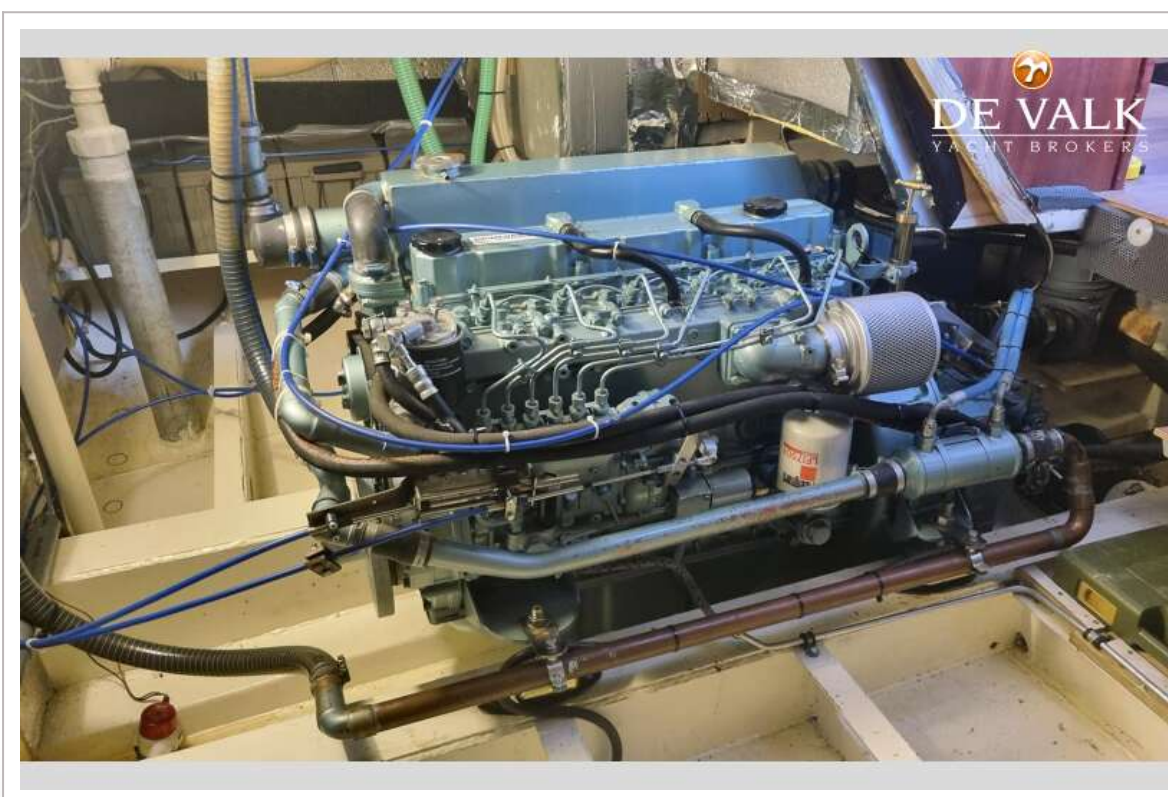
FALLAATSTER 1400 DECKSALOON KOTTER



FALLAATSTER 1400 DECKSALOON KOTTER



FALLAATSTER 1400 DECKSALOON KOTTER



FALLAATSTER 1400 DECKSALOON KOTTER

