



DE VALK
YACHT BROKERS



WAUQUIEZ AMPHITRITE 43



DE VALK
YACHT BROKERS

WAUQUIEZ AMPHITRITE 43

BROKER'S COMMENTS

This beautiful Wauquiez Amphitrite 43 was refitted between 2012 and 2020; hull, masts, furling booms sprayed, underwater hull provided with Coppercoat (after osmosis treatment) and a lot renewing's: teak on deck and in cockpit & teak-look-a-like rubbing strip on hull & sails & electric windlass, anchor, chain & Raymarine autopilot, radar/plotter, AIS, VHF & Mastervolt Combi 100A charger/2500W inverter, Mastervolt transformer & batteries & turbo on Perkins (renewed in 2002) engine. This comfortable yacht is suitable for sailing the world's oceans and can be visited with us in Sint Annaland.

Jan-Ward van Dantzig

SPECIFICATIONS

Dimensions	13.03 x 4.20 x 1.80 (m)	Builder	Chantier Wauquiez
Built	1979	Cabins	3
Material	GRP	Berths	9
Engine(s)	1 x Perkins M85 diesel	Hp/Kw	85.00 (hp), 62.56 (kw)
Asking price	sold (VAT)	Lying	at sales office

CONTACT

Sales office	De Valk Sint Annaland	Telephone	+31 166 601 000
Address	Koelhuisweg 4 4697 RM Sint Annaland The Netherlands	E-mail	sintannaland@devalk.nl

DISCLAIMER

These particulars are given in good faith as supplied but cannot be guaranteed.



WAUQUIEZ AMPHITRITE 43

GENERAL

Model	WAUQUIEZ AMPHITRITE 43
Type	sailing yacht
LOA (m)	13,03
LWL (m)	10,35
Beam (m)	4,20
Draft (m)	1,80
Air draft (m)	18,50
Headroom (m)	1,95
Year built	1979
Builder	Chantier Wauquiez
Country	France
Designer	Holman & Pye
Displacement (t)	17
Ballast (tonnes)	lead in GRP 5,5
CE norm	NA
Hull material	GRP
Hull colour	blue With white striping - repainted in 2015/2016
Hull shape	S-bilged Semi
Keel type	long keel Semi
Superstructure material	GRP
Rubbing strake	plastic Teak-look-a-like (new in 2016)
Deck material	GRP
Deck finish	teak New in 2015/2016
Cockpit deck finish	teak New in 2015/2016
Window frame	copper chromed
Window material	polycarbonate
Deckhatch	Goiot (new in 2000)
Portholes	aluminium Goiot (new in 2000)
Fuel tank (litre)	stainless steel 400
Level indicator (fuel tank)	yes



WAUQUIEZ AMPHITRITE 43

Freshwater tank (litre)	stainless steel 2 x 1000 & 1 x 250 (day tank)
Level indicator (freshwater)	yes
Blackwater tank (litre)	polyethylene 35
Wheel steering	cable steering Yacht Specialities Co. pedestal (2003), stainless steel wheel
Emergency tiller	yes
More info on hull	Osmosis treatment performed on the underwater hull (2015/2016)
More info on paintwork	After treatment Coppercoat Epoxy applied on underwaterhull ('16)
Extra info	6 x Stainless steel Vetus Air-Vent on deck (2004)
Extra info	Cockpit locker also accesable via galley, also used as workplace
Extra info	Blue cover over steering wheel and pedestal (restitched 01-2023)

ACCOMMODATION

Cabins	3
Berths	9
Interior	teak With white painted panels
Floor	teak and holly
Aft deck	With teak
Saloon	yes
Headroom saloon (m)	2,00
Heating	diesel ducted hot air Webasto Airtop (2004)
Chart table	On port side
Aft Cabin	Very spacious
Dinette to convert into berth	Double bed (SB: 2,00 x 1,25 m) & Single bed (PS: 2,00 x 0,60 m)
Galley	On starboard side - Headroom 2,00 m
Countertop	corian Blue (new in 2000)
Sink	stainless steel 2 x Sink (new in 2000)
Cooker	calor gas 2 Burner ENO (new in 2000)
Oven	ENO (new in 2000)
Fridge	Top and front loader with a Frigomatic compressor (new in 2000)



WAUQUIEZ AMPHITRITE 43

Freezer	Small freezing compartment in the fridge
Hot water system	geyser on Calor Gas
Water pressure system	electrical
Owners cabin	double bed In Aft Cabin - Headroom : 1,82 m
Bed length (m)	2,00 x 1,65
Wardrobe	hanging/drawers/shelves
Bathroom	en suite Headroom in Aft Bathroom : 1,88 m
Toilet	en suite
Toilet system	manual Jabsco
Wash basin	in the bathroom
Shower	en suite
Extra info	Blue corian topping in bathroom (new in 2000)
Guest cabin 1	v-bed In Front Cabin - Headroom : 1,95 m
Bed length (m)	1,90 x 1,45
Wardrobe	hanging and shelves
Bathroom	shared Headroom in Front Bathroom : 1,95 m
Toilet	shared
Toilet system	electric Jabsco (2004)
Wash basin	in the bathroom
Shower	shared
Extra info	Blue corian topping in bathroom (new in 2000)
Guest cabin 2	bunk bed In passage between aft cabin and saloon - Headroom : 1,77 m
Bed length (m)	2 x 2,00 x 0,60
Extra info	Lee Cloths for both bunk beds and bed on starboard saloon sofa

MACHINERY

No of engines	1
Make	Perkins
Type	M85
HP	85



WAUQUIEZ AMPHITRITE 43

kW	62.56
Fuel	diesel
Year installed	2002
Maximum speed (kn)	9
Cruising speed (kn)	7
Consumption (l/hr)	4
Engine cooling system	freshwater heat exchanger
Drive	shaft
Engine controls	bowden cable
Gearbox	mechanical
Bowthruster	electric Vetus 4,7 kW (installed in 2000) with a wire less remote control
Propeller type	folding Maxprop
Propeller blades	3
Propeller shaft material	stainless steel
Shaft lubrication	water
Manual bilge pump	1 x
Electric bilge pump	1 x
Electrical installation	12 and 220 Volt
Start battery	2 x 100 Ah Super Heavy Duty (2016)
Service battery	4 x 110 Ah Victron gel (2016)
Bowthruster battery	1 x 180 Ah
Battery monitor	Mastervolt (2012)
Battery charger/inverter	Mastervolt Mass Combi 12V/2500W/100A (2012)
Diode battery combiners	yes
Shorepower	with cable
Extra info	Engine room insulation recently renewed.2 x Alternator (1x 70A).
Extra info	Mastervolt transformer (2012). Emergency switch for batteries.
Extra info	New Turbo (2021). Fuel filter with water separator.

NAVIGATION



Compass	Sestrel Moore
Depth sounder	Raytheon ST60
Log	Raytheon ST60
Windset	Raytheon ST60
VHF	1 x Raymarine Ray 55E (2019) + 1 x Shipmate RS8300
Autopilot	Raymarine X30 (new in 2014)
Rudder angle indicator	Via autopilot
Radar	yes
Radar/GPS/plotter	Raymarine Axiom - hybrid touch (new in 2019)
Electronic chart(s)	Navionics
AIS transceiver	Raymarine (2019)
Navigation lights	LED in mast head
Extra info	Radar/chart plotter display mounted in turnable Scanstrut (2019)

EQUIPMENT

Sprayhood with grab rail	Blue (restitched and new windows in December 2022)
Cockpit cushions	2 x Loose blue cushion
Cockpit table	Teak (new in 2000)
Bathing platform	Stainless steel with teak slats (new in 2000)
Boarding ladder	stainless steel Stainless steel with teak steps (new in 2000)
Deck shower	With hot and cold water
Anchor	Rocna 33 kg (2019)
Anchor chain	60 meter (2019)
Windlass	electrical Lofrans 1500 Watt (2019)
Outboard support	Teak
Davits	stainless steel Prasolux (2004)
Davits controls	manual
Sea railing	wire
Railing side opening gates	Only on port-side
Pushpit	Stainless steel
Pulpit	With 2x teak seat, perfect place to sit and enjoy the sailing



Life raft (pers)	container 6 - Plastimo Transocean
Last life raft survey	Needs to be surveyed
Lifebuoy	2 x
Danbuoy	1 x
Horn	Manual - Copper
Radar reflector	Tri-Lens
Fenders	yes
Mooring lines	yes
Spare parts	yes
Radio-cd player	JVC
Speakers in salon	2 x Maximum
Clock - barometer	Observer Clock, Barometer and Hygrometer
Fire extinguisher	2 x
Latest extinguisher survey	2017
Extra info	1 x Butane and 1 x propane (used in colder areas) gass well.

RIGGING

Rigging	ketch
Standing rigging	wire (Renewed in 2016 by Neutmast)
Material mast	aluminium coated White painted in 2016
Spreaders	1 x 2 spreaders on both masts
Mainsail	Van Vliet Sails : In-Boom Furling mainsail (2016)
Mainsail cover	Blue (2016)
Furling boom	Profurl Furling boom (2004), repainted white in 2020
Mizzen	Van Vliet Sails : In-Boom Furling Mizzen (2016)
Mizzen sailcover	Blue (2016)
Jib	Van Vliet Sails : Furling Cutter Jib (2016)
Genoa furler	Furlex 400S
Cutter furler	Furlex 200S (installed in 2004)
Gennaker	(2002)
Yankee	Van Vliet Sails : Yankee (2016) with a grey UV protection strip



Reefing System	main in-boom furling 2 x Profurl boom, also mizzen (mounted in 2004)
Boomvang	gasspring 2 x Profurl (mounted in 2004)
Primary sheet winch	2 x Lewmar 30 ST
Secondary sheet winch	3 x Lewmar
Genoa sheetwinches	2 x Lewmar 48 ST
Halyard winches	1 x Andersen 40 ST and 1x Andersen 28 ST (both mounted in 2002)
Spi-pole	aluminium White painted
Extra info	Main mast with mast-steps till mast-head
Extra info	Aluminium Hasselfors stay tentioner protectors (from 2000)



WAUQUIEZ AMPHITRITE 43



WAUQUIEZ AMPHITRITE 43



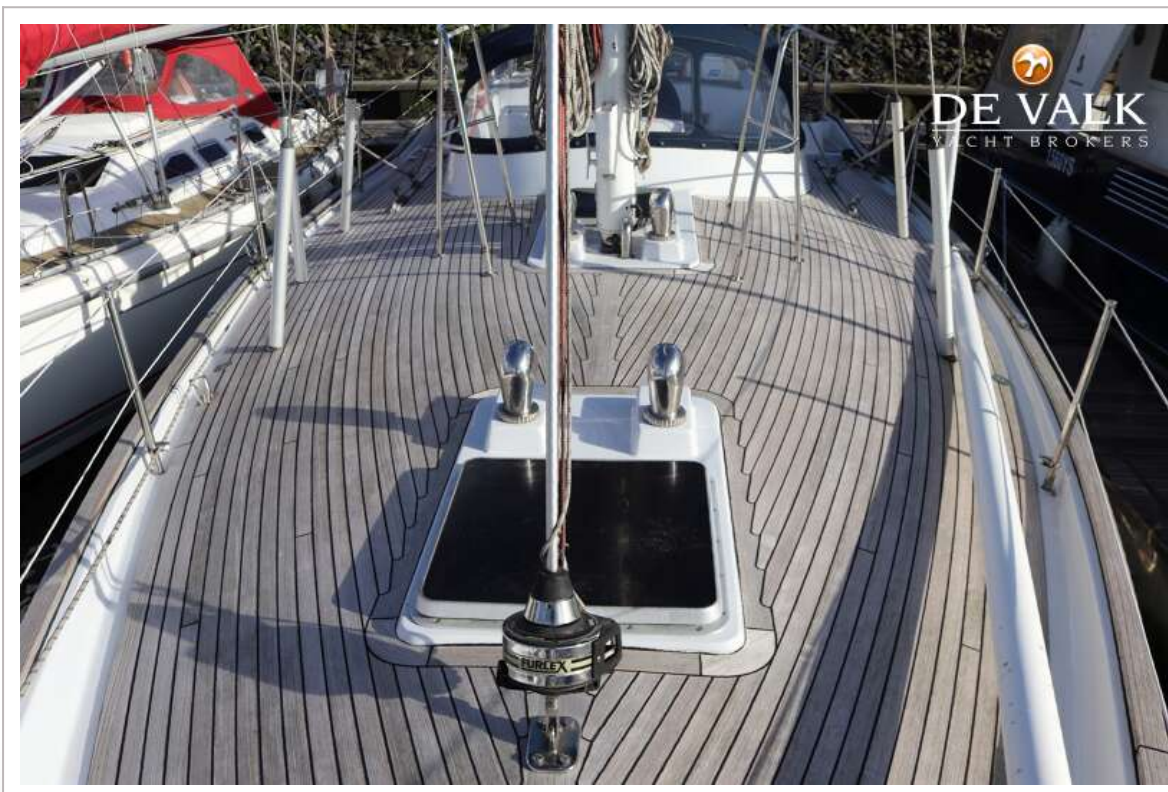
WAUQUIEZ AMPHITRITE 43



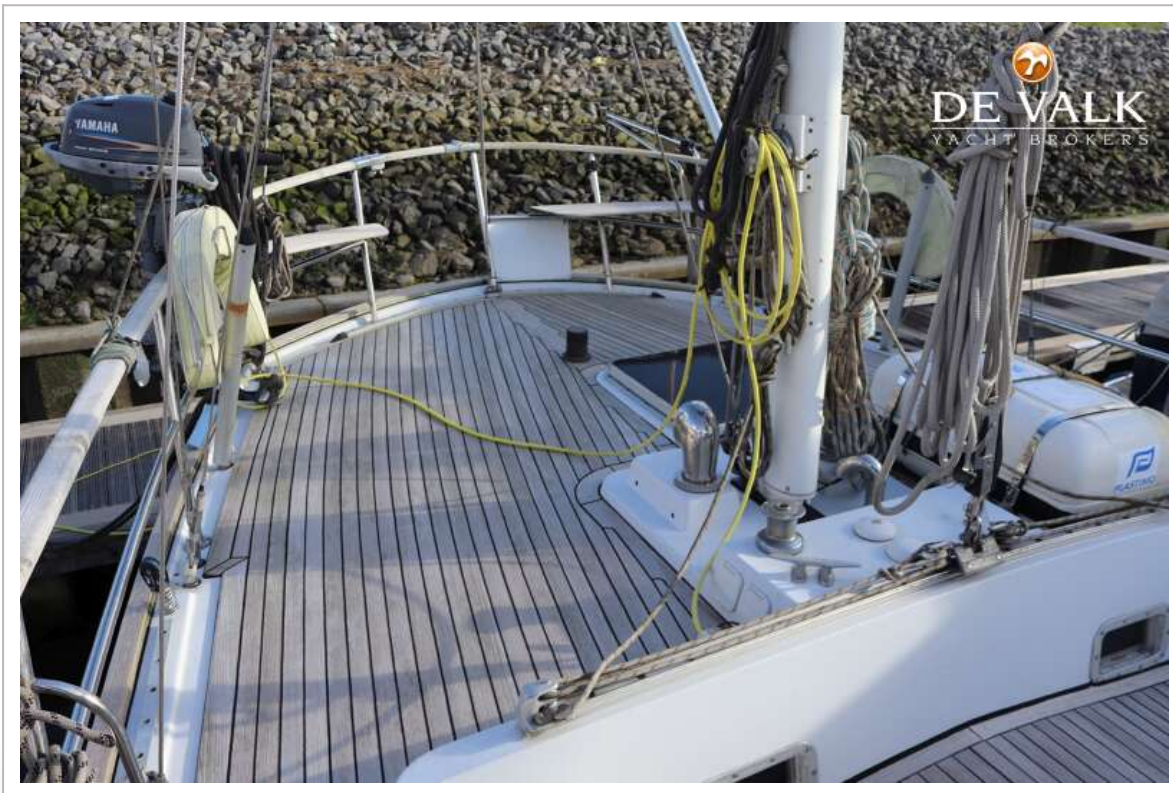
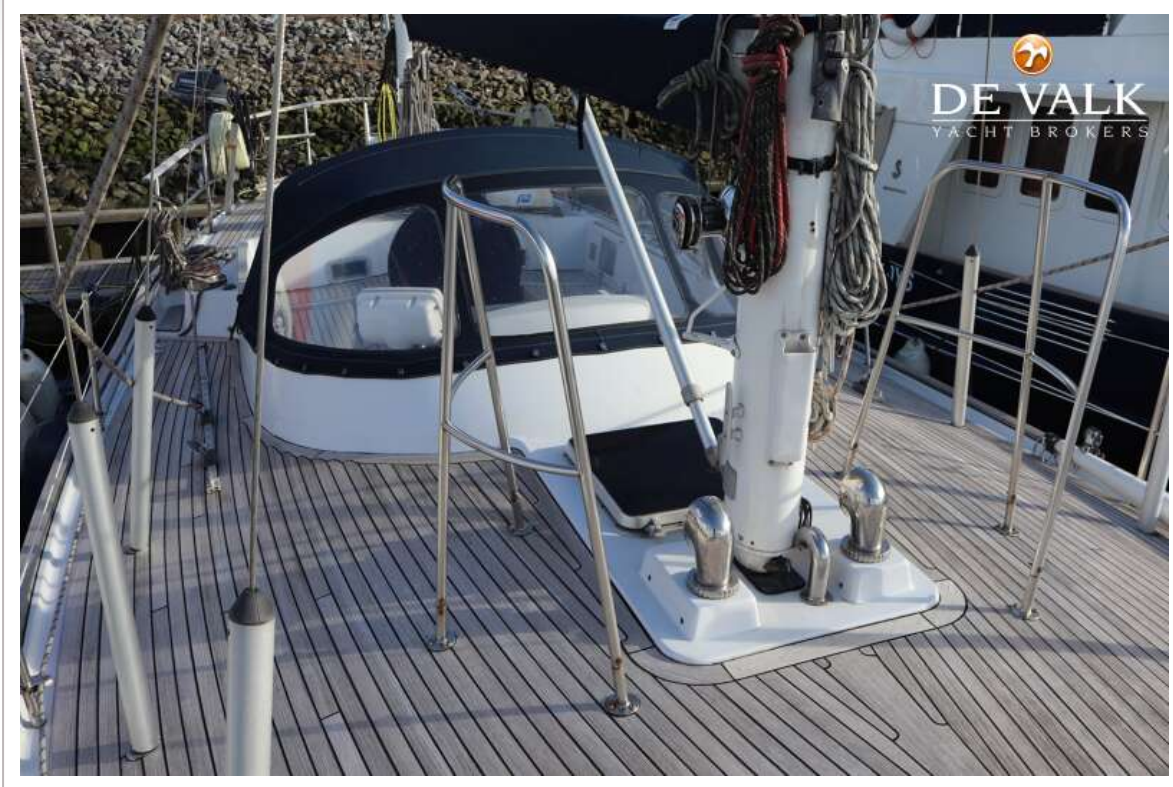
WAUQUIEZ AMPHITRITE 43



WAUQUIEZ AMPHITRITE 43



WAUQUIEZ AMPHITRITE 43



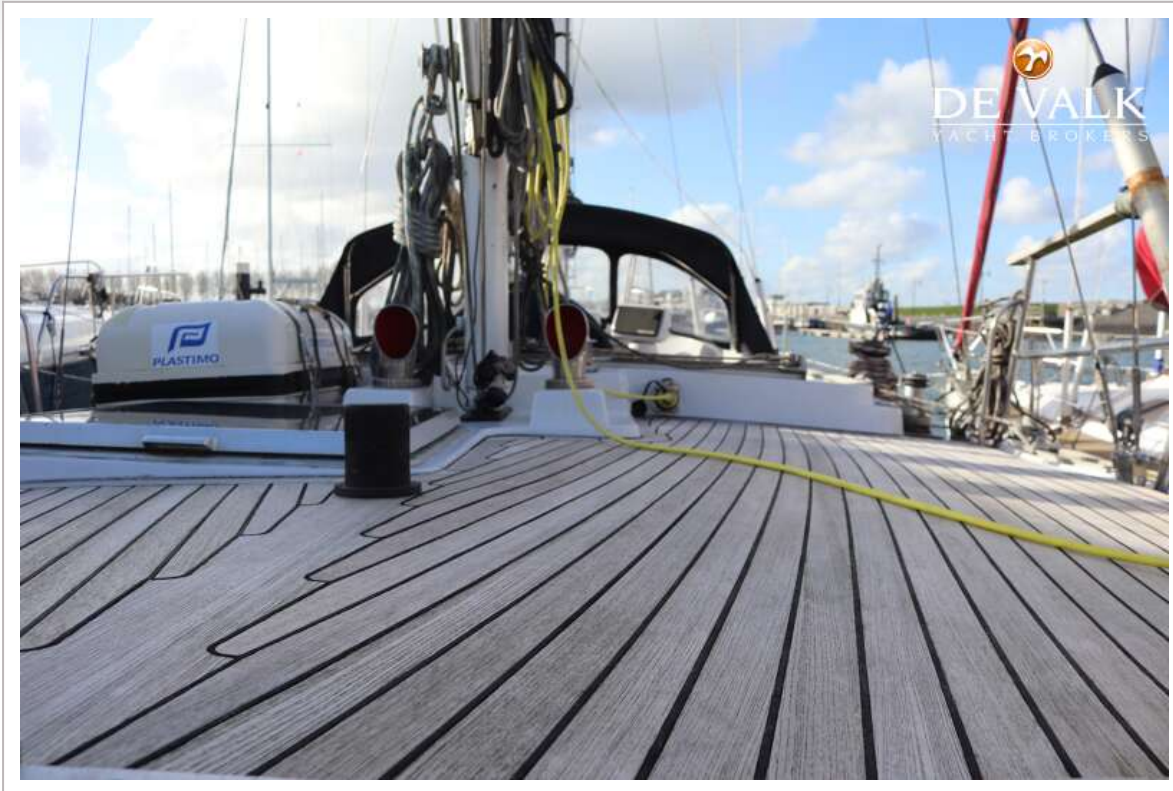
WAUQUIEZ AMPHITRITE 43



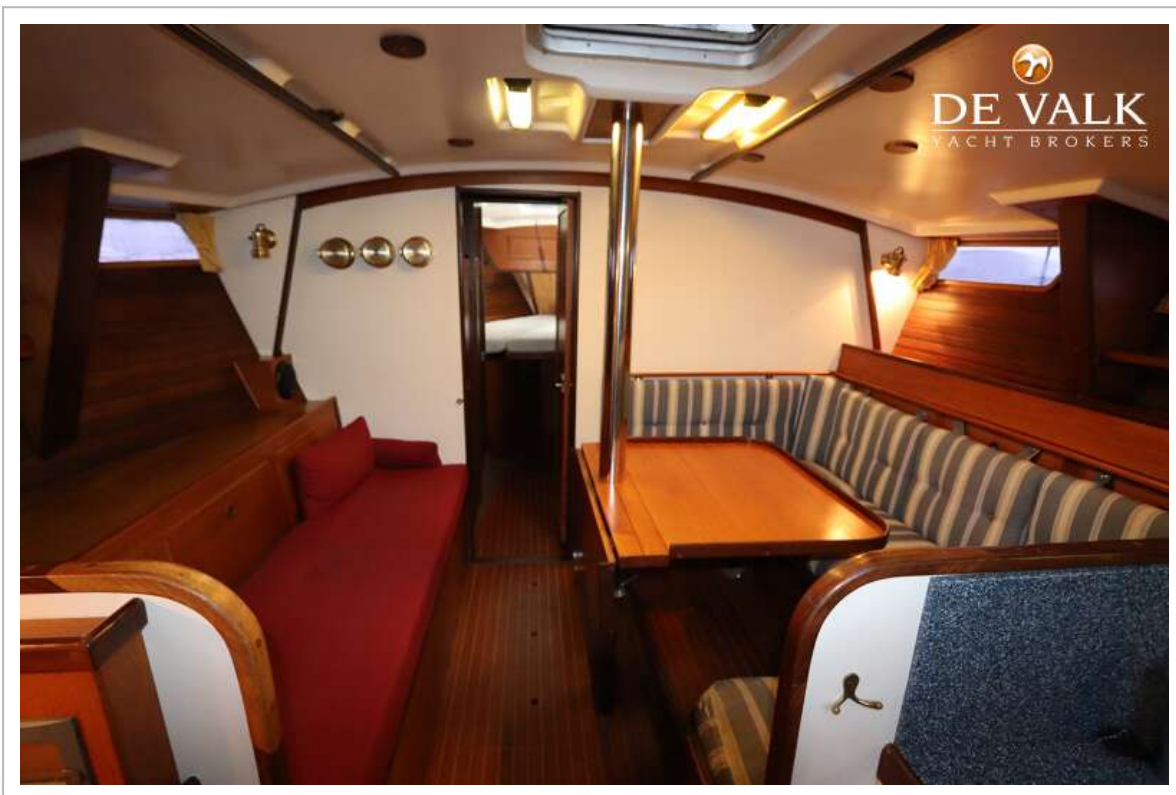
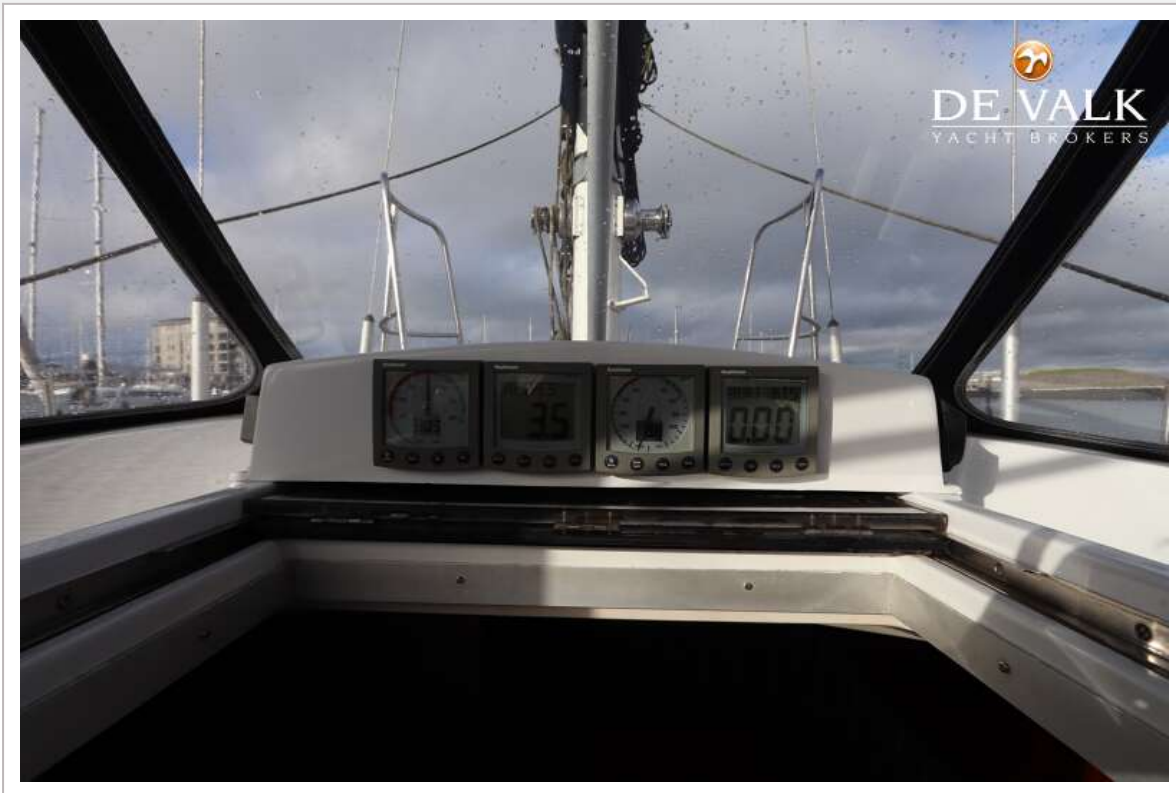
WAUQUIEZ AMPHITRITE 43



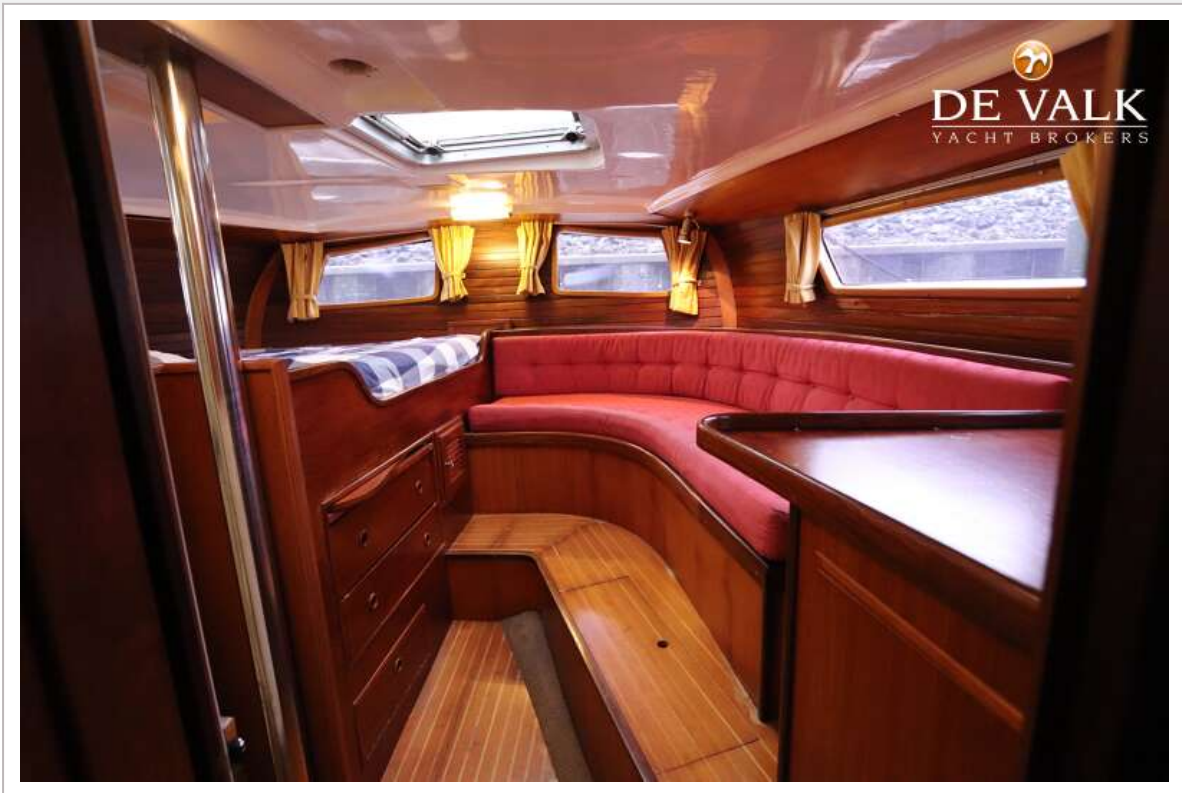
WAUQUIEZ AMPHITRITE 43



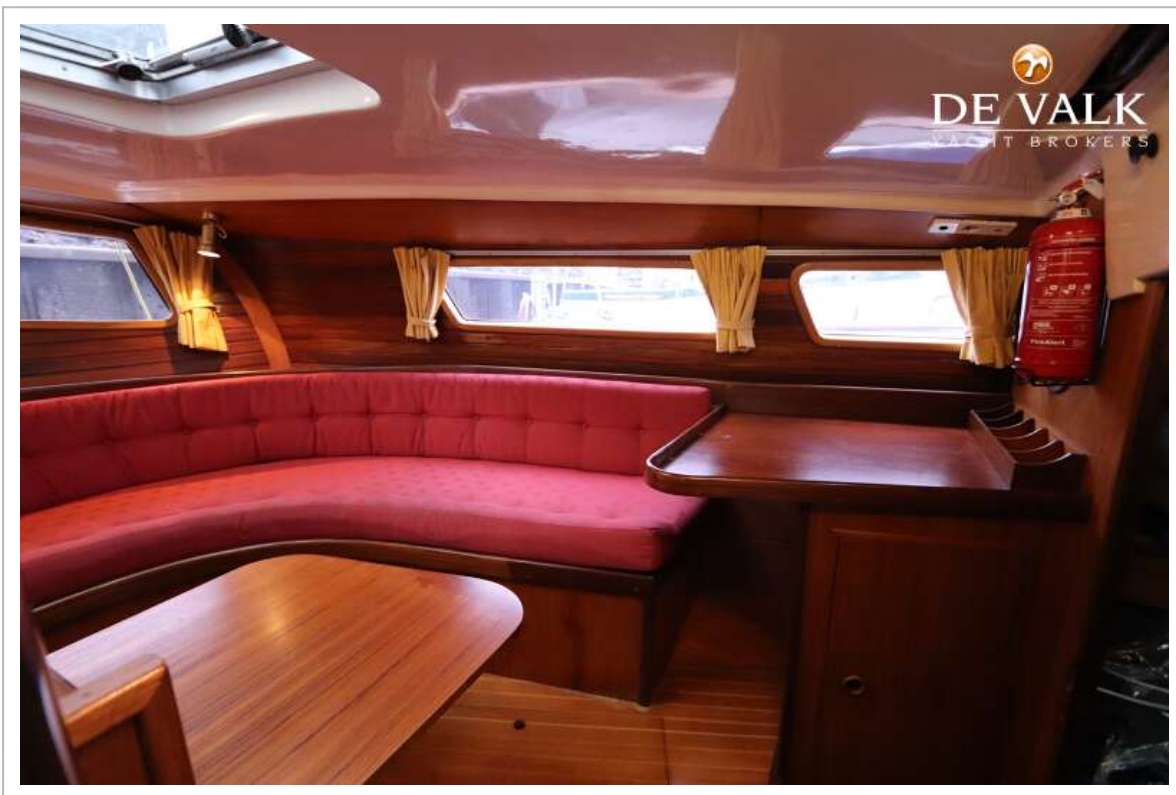
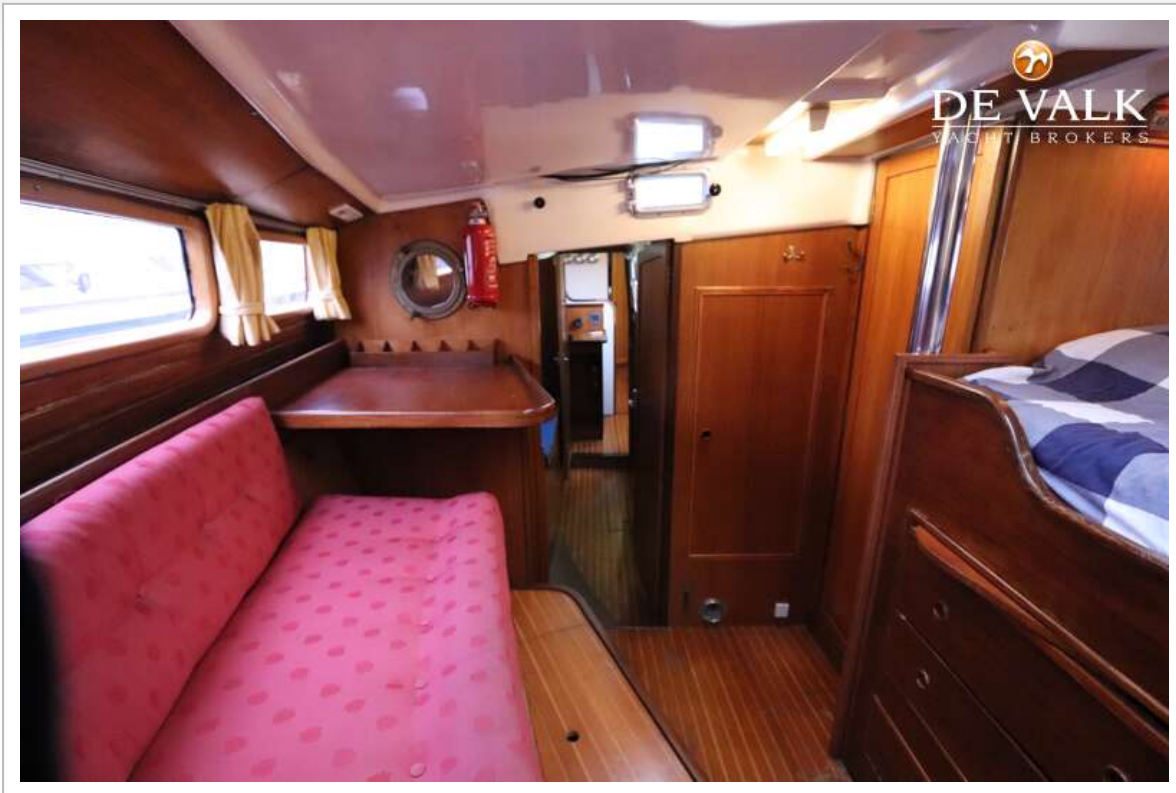
WAUQUIEZ AMPHITRITE 43



WAUQUIEZ AMPHITRITE 43



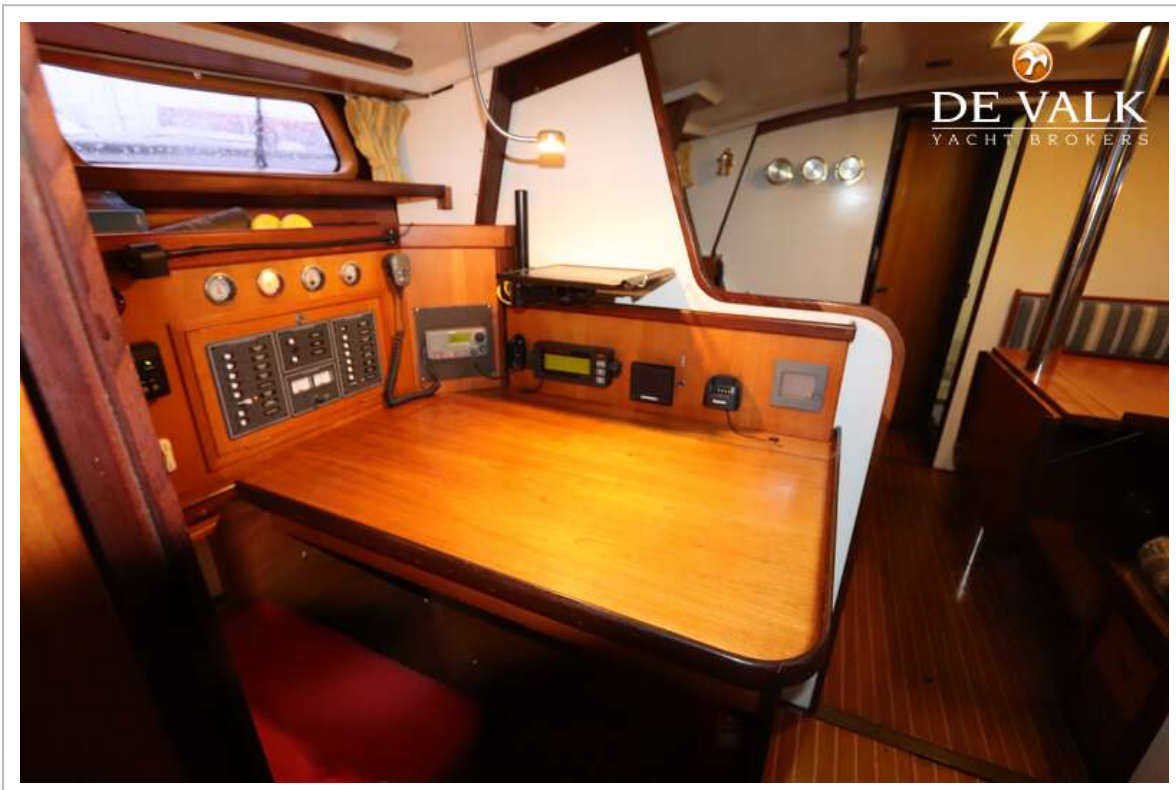
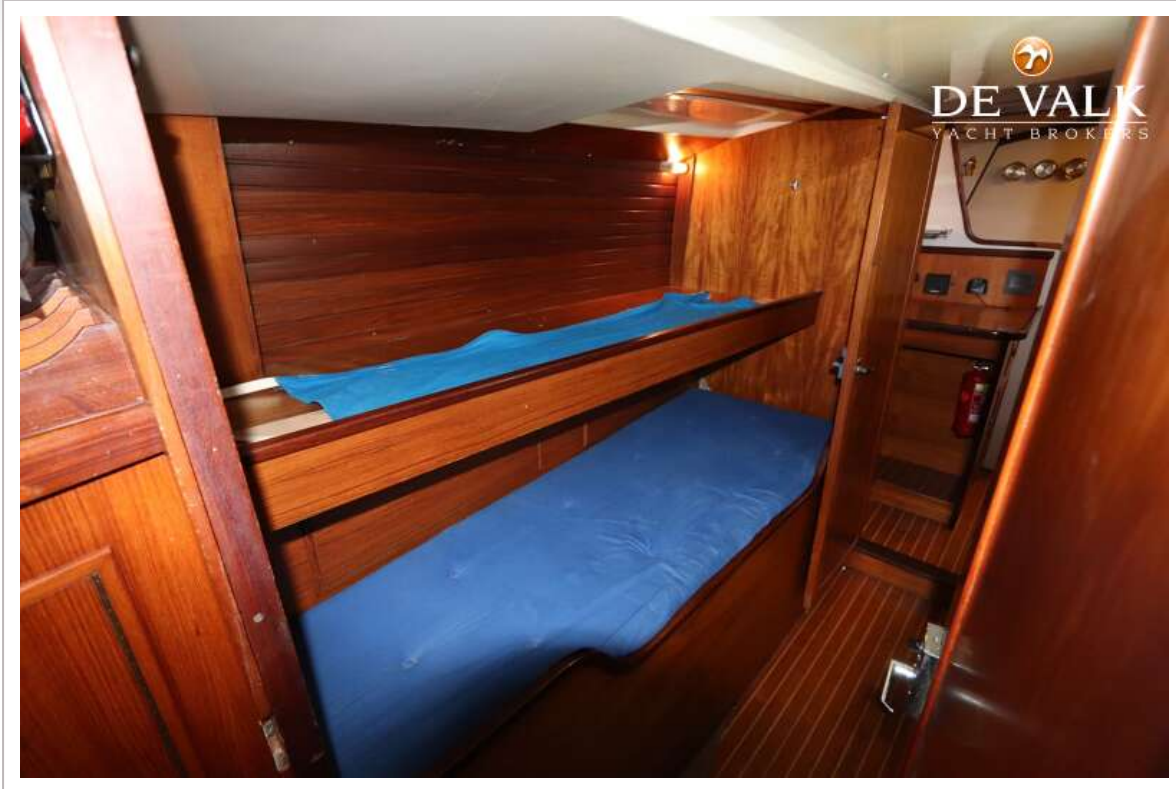
WAUQUIEZ AMPHITRITE 43



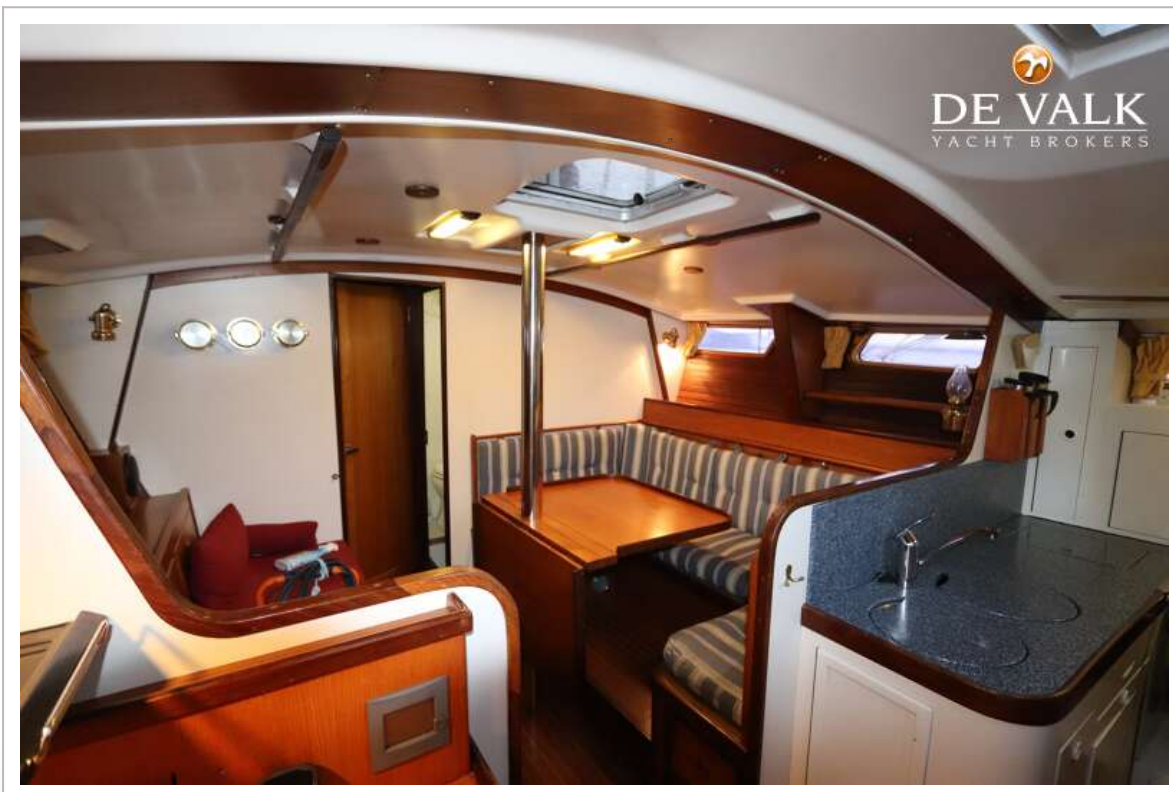
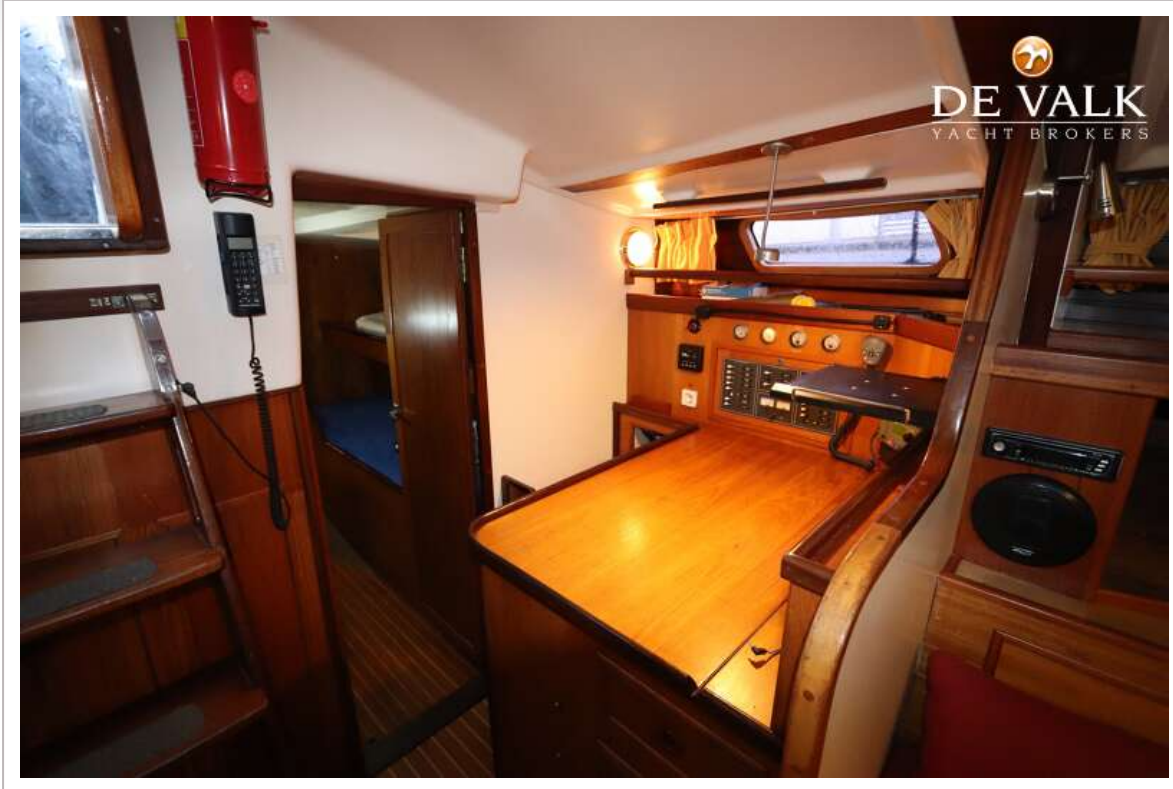
WAUQUIEZ AMPHITRITE 43



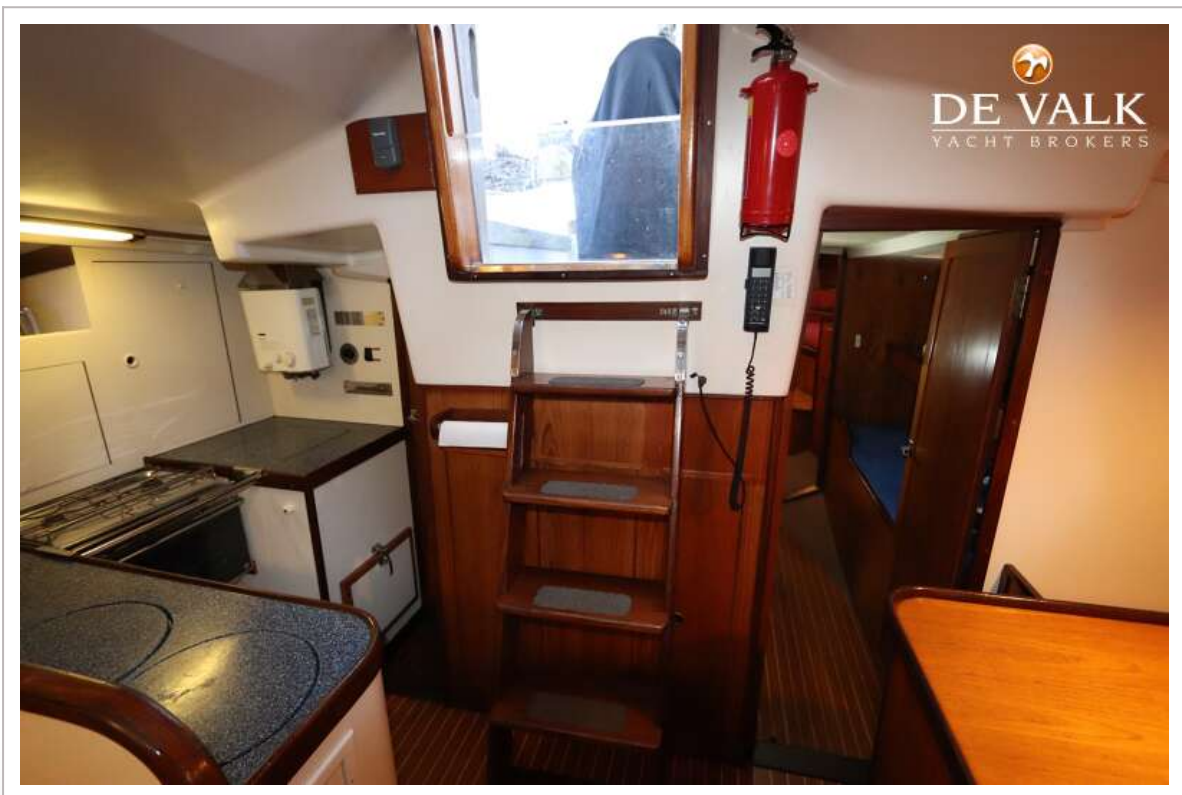
WAUQUIEZ AMPHITRITE 43



WAUQUIEZ AMPHITRITE 43



WAUQUIEZ AMPHITRITE 43



WAUQUIEZ AMPHITRITE 43



WAUQUIEZ AMPHITRITE 43



WAUQUIEZ AMPHITRITE 43

