



DE VALK
YACHT BROKERS



SUCCES BALTIC 42



DE VALK
YACHT BROKERS

BROKER'S COMMENTS

Well-built Succes 42 Baltic called "Conquest" this motor yacht is equipped with very spacious accommodations making a longer stay on board very comfortable. This Succes 42 Baltic is equipped with two rock solid Ford Lehman engines, the "Conquest" is also equipped with a strong hydraulic bow thruster. She will be auctioned on May, 9th, 2023 in cooperation with YachtBid and Troostwijk. For further details and viewing days go https://bit.ly/SuccesBaltic42_EN Starting price of the auction is € 25.000,-. Offers can be made from May, 9th, 2023 the website of Troostwijk Auctions.

Mark Hesselmans

SPECIFICATIONS

Dimensions	12.50 x 4.15 x 1.30 (m)	Builder	Succes
Built	1983	Cabins	3
Material	Steel	Berths	8
Engine(s)	2 x Ford 2725E diesel	Hp/Kw	2 x 116.00 (hp), 85.38 (kw)
Asking price	sold (VAT)	Lying	at sales office

CONTACT

Sales office	De Valk Loosdrecht B.V.	Telephone	+31 (0)35 582 90 30
Address	't Breukeleveense Meentje 6 1231LM Loosdrecht / Wijdmeren NL	E-mail	loosdrecht@devalk.nl

DISCLAIMER

These particulars are given in good faith as supplied but cannot be guaranteed.



GENERAL

Model	SUCCES BALTIC 42
Type	motor yacht
LOA (m)	12,50
Beam (m)	4,15
Draft (m)	1,30
Air draft (m)	3,65
Headroom (m)	2,00
Year built	1983
Builder	Succes
Country	The Netherlands
Displacement (t)	20
Hull material	steel
Hull colour	white
Hull thickness (mm)	5mm
Hull shape	multi hard chine
Superstructure material	steel
Rubbing strake	steel
Deck material	steel
Deck finish	non-skid paint
Superstructure deck finish	paint
Cockpit deck finish	teak
Antifouling (year)	2021
Window frame	aluminium
Window material	tempered glass
Deckhatch	yes
Portholes	aluminium
Insulation	glasswool And foam
Flybridge	yes
Flybridge cover	yes
Radar arch	collapsible



Fuel tank (litre)	steel 1560
Level indicator (fuel tank)	yes
Freshwater tank (litre)	polyethylene 1000
Level indicator (freshwater)	yes
Blackwater tank (litre)	steel 650 (refitted 2010)
Blackwater tank extraction	deck extraction + pump Handmatig
Wheel steering	hydraulic
Inside helm position	yes
Flybridge helm position	hydraulic

ACCOMMODATION

Cabins	3
Berths	8
Interior	teak
Floor	wood
Aft deck	yes
Saloon	yes
Headroom saloon (m)	1.95
Heating	diesel ducted hot air Eberspacher Airtronic L 4.8KW (2009)
Heating 2	electric 220V 4x 400W (2011)
Aft Cabin	yes
Dinette to convert into berth	yes
Opening door to aft deck	yes
Galley	yes
Countertop	tiles
Sink	stainless steel
Cooker	calor gas 4 burner AEG (2008)
Gas alarm	yes
Microwave	Siemens
Fridge	2x with freezing compartment
Hot water system	220V + engine



Water pressure system	electrical
Owners cabin	double bed
Bed length (m)	2.00 x 1.40
Wardrobe	hanging/drawers/shelves
Bathroom	shared
Toilet	shared
Toilet system	manual
Wash basin	in the bathroom
Shower	shared
Guest cabin 1	bunk bed
Bed length (m)	2x 1.90 x 0.90
Wardrobe	hanging
Guest cabin 2	double bed
Bed length (m)	1.80 x 1.20

MACHINERY

No of engines	2
Make	Ford
Type	2725E
HP	116
kW	85.38
Fuel	diesel
Year installed	1983
Maximum speed (kn)	9
Cruising speed (kn)	7
Consumption (l/hr)	15
Engine hours	3100
Engine cooling system	freshwater heat exchanger
Engine controls	bowden cable
Gearbox	hydraulic
Bowthruster	hydraulic



Exhaust	watercooled
Thrust bearing	yes
Propeller type	fixed
Propeller blades	3
Shaft lubrication	grease Electric
Electric bilge pump	yes
Bilge alarm	yes
Electrical installation	12/220V
Generator	Lamborghini 3000
Batteries	6
Start battery	2x 12/185 Ah (2016)
Service battery	4x 12V/185Ah (2016)
Battery monitor	yes
Battery charger	yes
Inverter	yes
Shorepower	with cable

NAVIGATION

Compass	Silva TYPE 100
Electric compass	VDO 2x
Depth sounder	VDO 2x
Log	VDO
VHF	2x NAVVMAN 7100
VHF handheld	Midland Ocean
Autopilot	2x Raymarine ST6002
Rudder angle indicator	2x VDO + 2x Raymarine ST6002
Radar	Furuno 1623 + Raymarine C120
GPS	JRC NAV 500 + Starfish Cmap + Furuno GP-32 + Raymarine C120
Plotter/GPS	Starfish Cmap
Radar/GPS/plotter	Raymarine C120



Personal computer	Laptop Navigo
Navigation lights	yes

EQUIPMENT

Fixed windscreen	yes
Winter cover	8 x 3m
Cockpit cushions	yes
Cockpit table	yes
Cockpit chairs	yes
Boarding ladder	stainless steel
Anchor	yes
Anchor 2	yes
Windlass	manual Vetus
Capstan	yes
Sea railing	steel
Grab rail (superstructure)	steel
Railing side opening gates	1
Pushpit	yes
Pulpit	yes
Life raft	container
Life raft (pers)	4
Last life raft survey	2016
Lifejackets	yes
Lifebuoy	yes
Wiper	2x
Horn	electric
Fenders	yes
Mooring lines	yes
Spare parts	yes
Tools	yes
Alarm system	Dummy camera



TV	Amstrad
Radio	+ flybridge
DVD player	On tv
Speakers in salon	yes
Fire extinguisher	3 valid 2025





BROKERAGE | CHARTER | BERTHS | FINANCE | INSURANCE | YACHT MANAGEMENT



DE VALK
YACHT BROKERS



**This yacht will be auctioned,
for further details please visit www.devalk.nl**

**Dit schip zal worden geveild,
voor meer informatie gaat u naar www.devalk.nl**

**Dieses Schiff wird versteigert,
für weitere informationen besuchen Sie www.devalk.nl**

WWW.DEVALK.NL



DE VALK
YACHT BROKERS



SUCCES BALTIC 42



SUCCES BALTIC 42





SUCCESS BALTIC 42



SUCCES BALTIC 42



SUCCES BALTIC 42



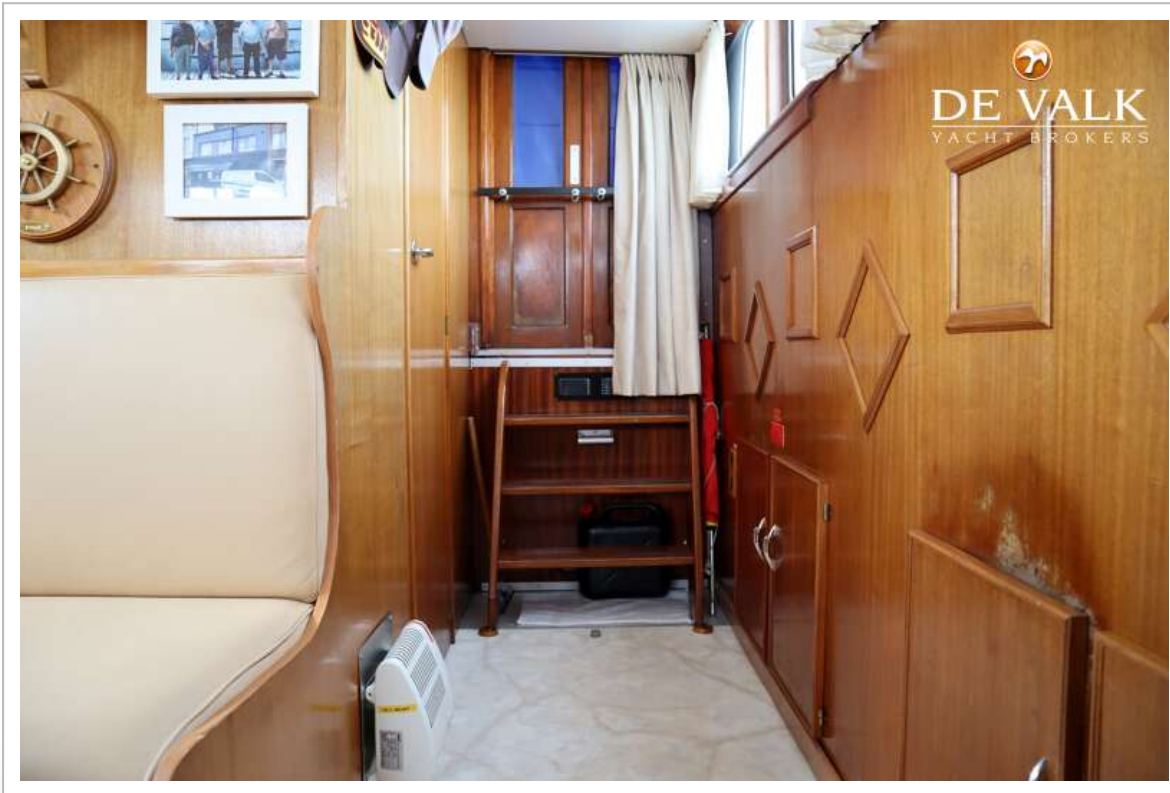
SUCCES BALTIC 42



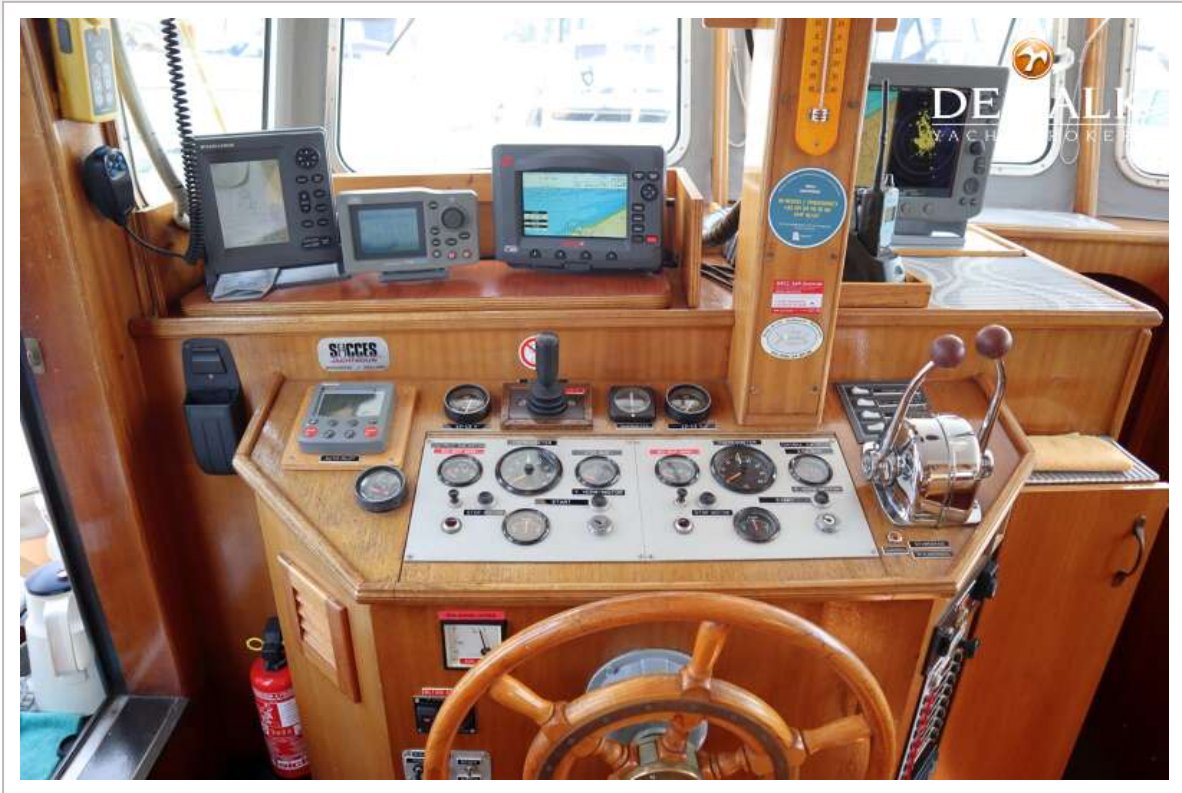
SUCCES BALTIC 42



SUCCES BALTIC 42



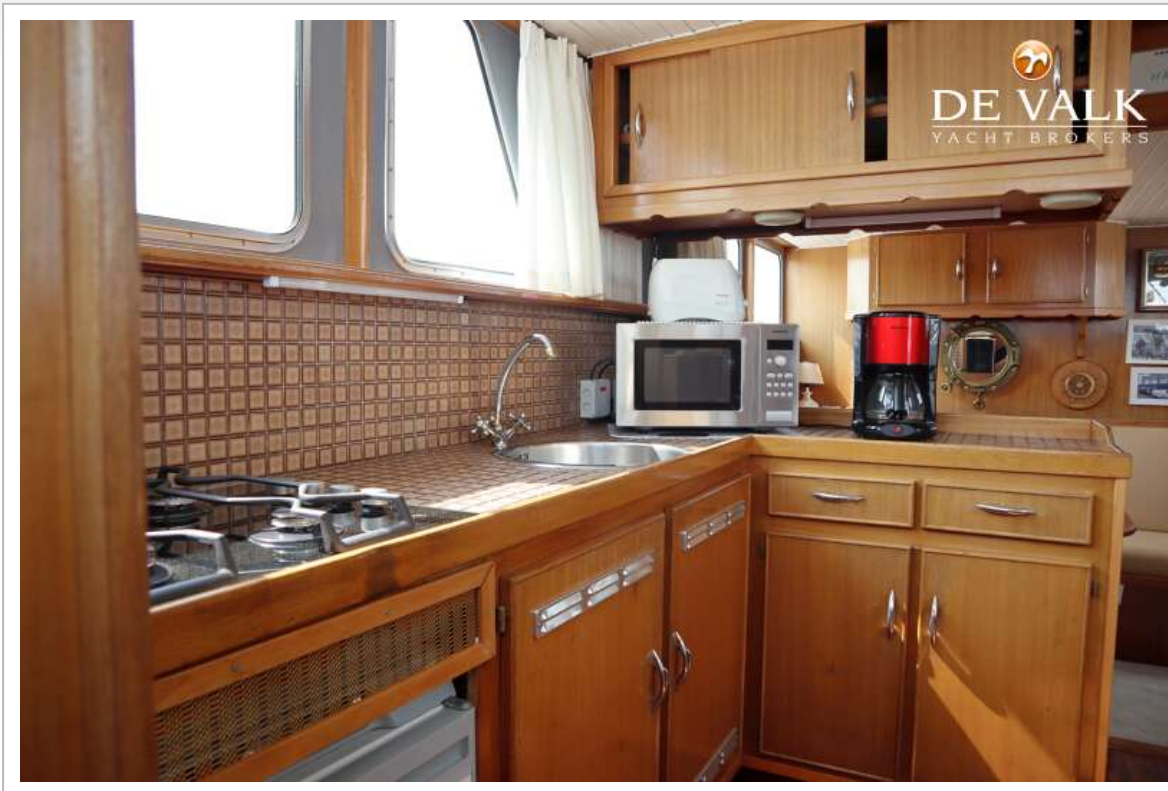
SUCCES BALTIC 42



SUCCES BALTIC 42



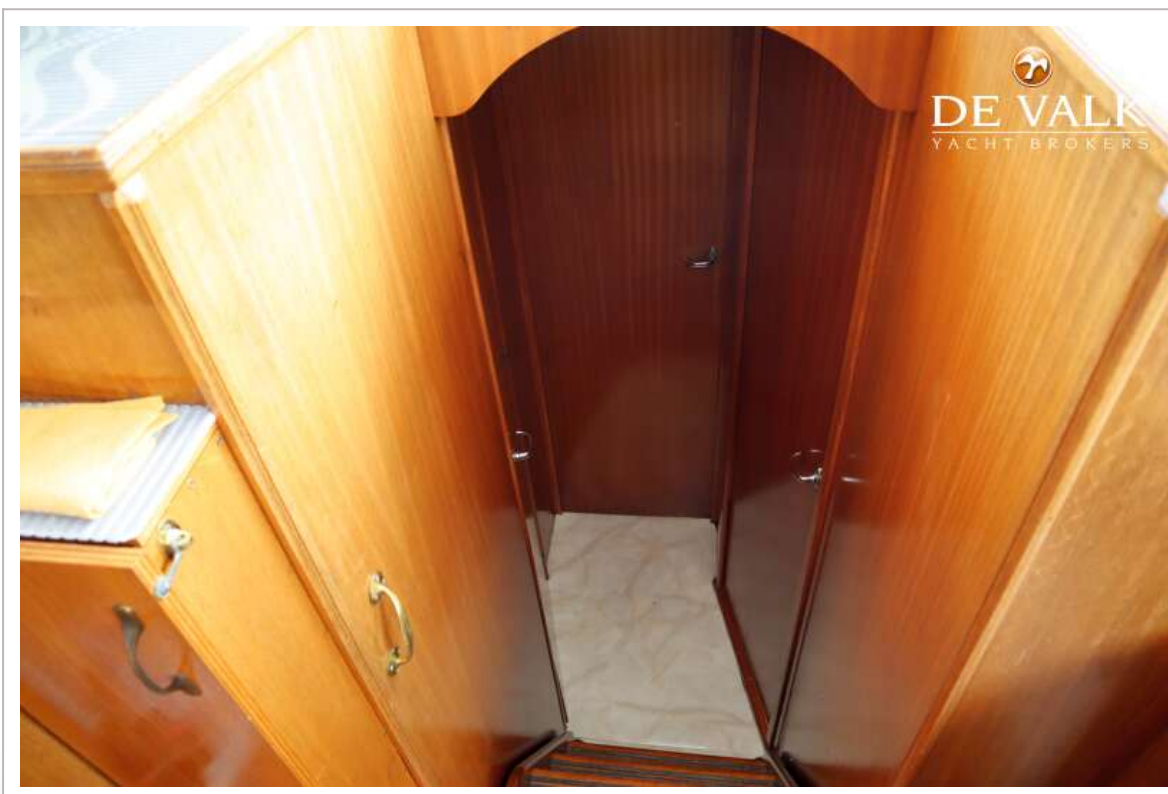
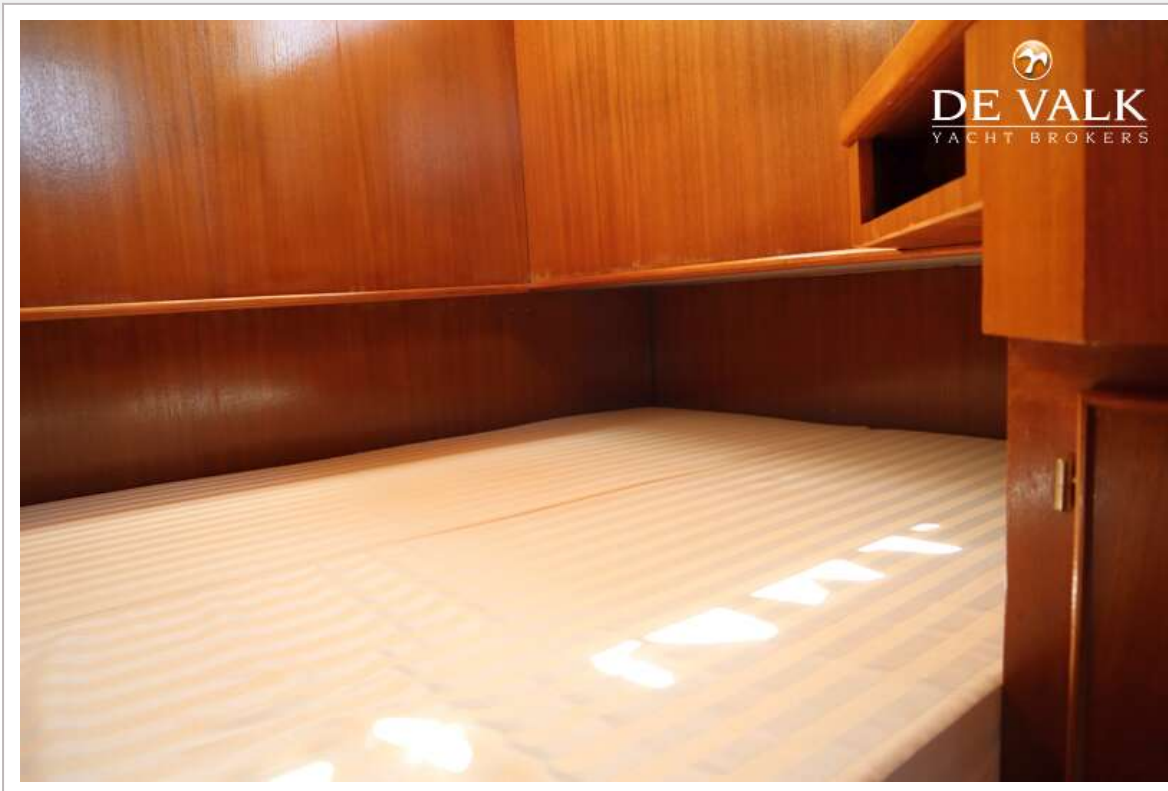
SUCCES BALTIC 42



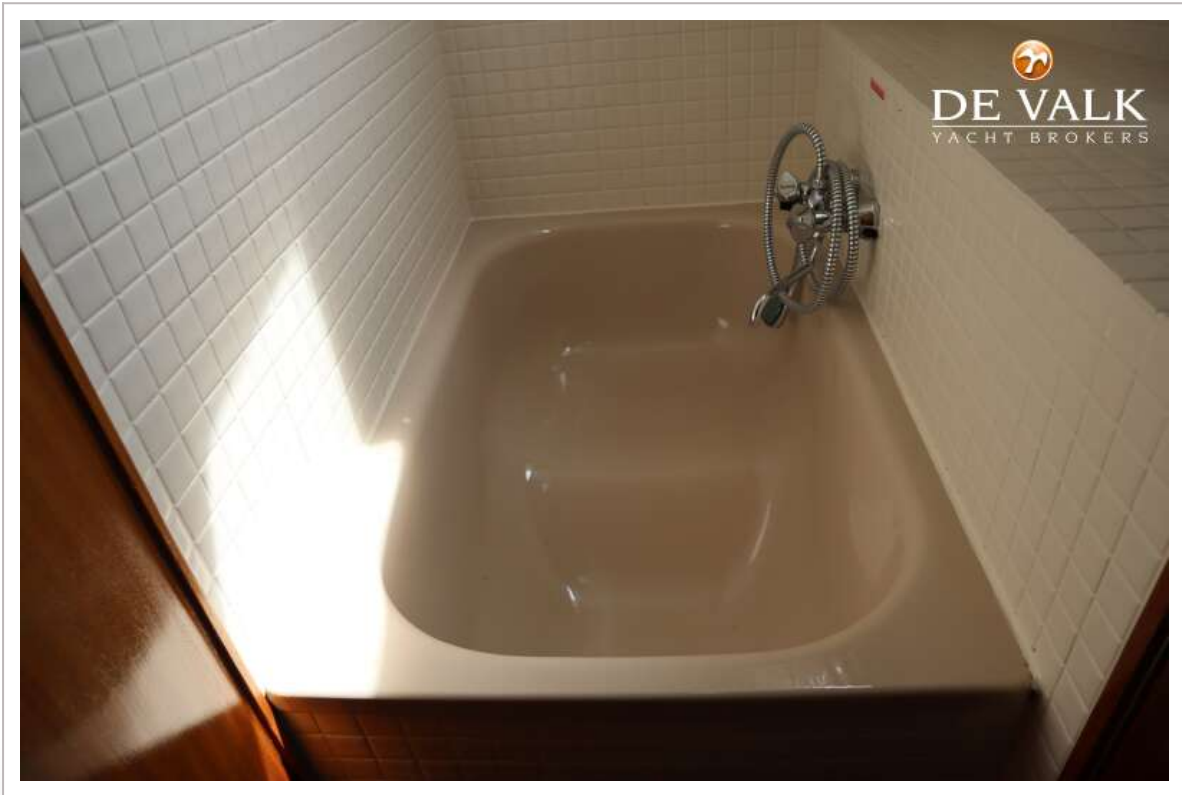
SUCCES BALTIC 42



SUCCES BALTIC 42



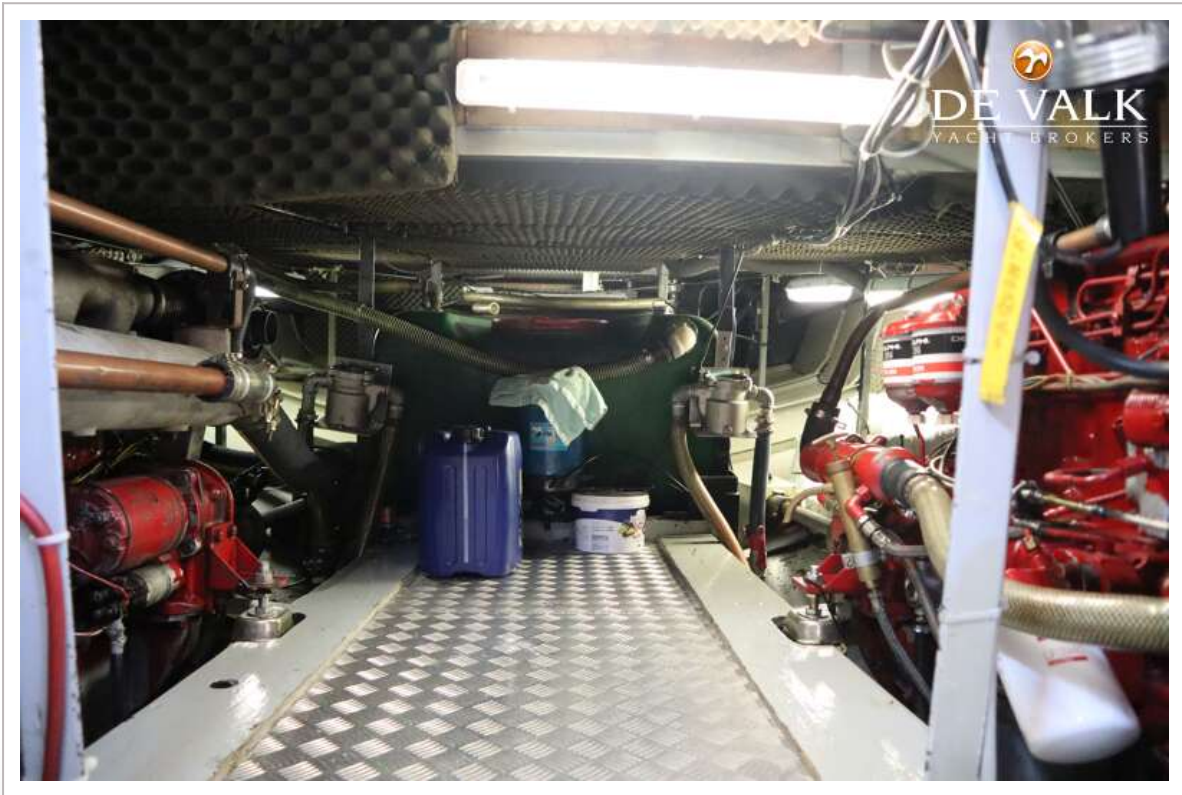
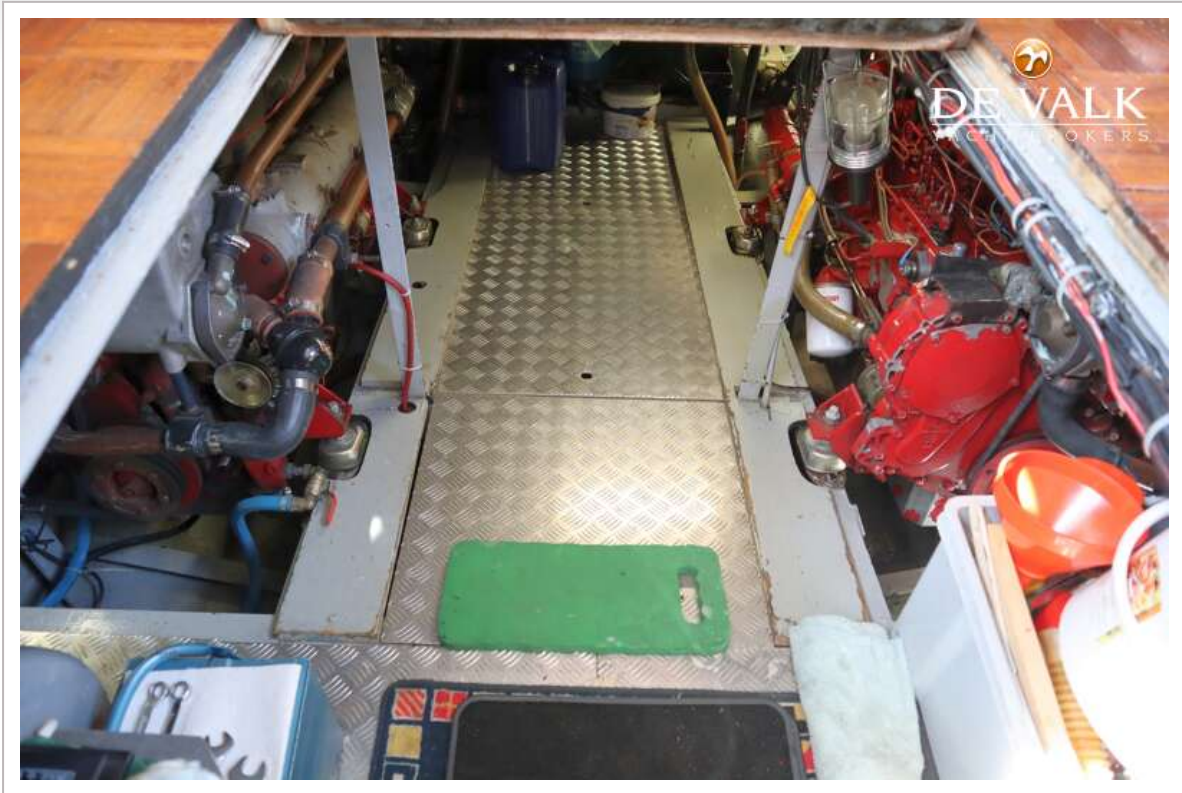
SUCCES BALTIC 42



SUCCES BALTIC 42



SUCCES BALTIC 42



SUCCES BALTIC 42

