



DE VALK
YACHT BROKERS



SK KOTTER PILOT 1250 OK



DE VALK
YACHT BROKERS

BROKERAGE | CHARTER | BERTHS | FINANCE | INSURANCE | YACHT MANAGEMENT

SK KOTTER PILOT 1250 OK

BROKER'S COMMENTS

We are pleased to present an SK Kotter 1250 Pilot with open cockpit from the second owner. This SK Kotter, with hull number SK348, is in very clean condition. In 2023 the hull was completely repainted. Built in 2010, this boat is extensively equipped for longer trips, but also for permanent living, due to the double glass all around, full insulation and heating. In addition, the ship is technically equipped with a bow and stern thruster and a reliable Volvo Penta D3 with 110 HP and remote control. Don't miss this opportunity and come see her at our office in Loosdrecht!

Sjoerd Paddenburg

SPECIFICATIONS

Dimensions	12.50 x 4.18 x 1.10 (m)	Builder	SK Jachtbouw Sneek
Built	2010	Cabins	2
Material	Steel	Berths	6
Engine(s)	1 x Volvo Penta D3-110 5 cil. diesel	Hp/Kw	110.00 (hp), 80.96 (kw)
Asking price	€ 279.000 (VAT Paid)	Lying	at sales office

CONTACT

Sales office	De Valk Loosdrecht B.V.	Telephone	+31 (0)35 582 90 30
Address	't Breukeleveense Meentje 6 1231LM Loosdrecht / Wijdmeren NL	E-mail	loosdrecht@devalk.nl

DISCLAIMER

These particulars are given in good faith as supplied but cannot be guaranteed.



GENERAL

Model	SK KOTTER PILOT 1250 OK
Type	motor yacht
LOA (m)	12,50
LWL (m)	11,00
Beam (m)	4,18
Draft (m)	1,10
Air draft (m)	4,25
Air draft min (m)	2,45
Year built	2010
Builder	SK Jachtbouw Sneek
Country	The Netherlands
Displacement (t)	14,34
CE norm	C
Hull material	steel
Hull colour	blue Majestic
Hull thickness (mm)	6
Hull shape	hard chine
Superstructure material	steel
Superstructure (mm)	5
Rubbing strake	plastic
Deck material	steel
Deck finish	synthetic teak
Superstructure deck finish	paint
Cockpit deck finish	synthetic teak
Antifouling (year)	2023
Dorades	yes
Window frame	aluminium
Window material	double glazing
Deckhatch	yes
Portholes	aluminium



Insulation	rockwool 50 mm + cork 4 mm in cockpit
Mast can be lowered	hydraulic
Fuel tank (litre)	steel 252
Fuel tank 2 (litre)	steel 252
Level indicator (fuel tank)	yes
Freshwater tank (litre)	stainless steel 600
Level indicator (freshwater)	yes
Blackwater tank (litre)	stainless steel 151
Level indicator (blackwater)	yes
Blackwater tank extraction	deck extraction + pump Whale Gulpner 220
Wheel steering	hydraulic
Inside helm position	yes
More info on paintwork	Painted in 2023
Extra info	Paint hull: Alexseal Premium Topcoat 501
Extra info	Paint superstructure: Double Coat, RAL 9001
Extra info	Mentioned air draft (4,25m) is without antenna

ACCOMMODATION

Cabins	2
Berths	6
Interior	cherry
Floor	teak
Open cockpit	yes
Saloon	yes
Headroom saloon (m)	1,95
Sliding roof	electric Webasto
Heating	diesel ducted hot air Eberspacher
Dinette	yes
Dinette to convert into berth	yes
Sliding door to cockpit	yes
Galley	yes



Countertop	plastic HPL
Sink	stainless steel
Cooker	calor gas Etna - 4 burners
Oven	SMEV gas oven and grill
Extractor	Etna 220V
Fridge	Dometic 65 + Webasto cooling shelf Isotherm
Hot water system	220V + engine Boiler Webasto Isotemp 50l (230V/750W)
Water pressure system	electrical Flojet
Owners cabin	French bed
Bed length (m)	2,00
Toilet	separate
Toilet system	electric Tecma
Shower	separate
Guest cabin 1	twin single
Bed length (m)	2,00

MACHINERY

No of engines	1
Make	Volvo Penta
Type	D3-110 5 cil.
HP	110
kW	80.96
Fuel	diesel
Year installed	2010
Maximum speed (kn)	8,1
Cruising speed (kn)	6
Engine hours	1565
Engine cooling system	freshwater heat exchanger
Drive	shaft
Engine controls	electrical ZF
Gearbox	hydraulic ZF25A - 2,48:1



Engine controls	Dockmate
Bowthruster	electric Vetus 24V
Sternthruster	electric Vetus 24V
Propeller type	fixed 22" x 16"
Propeller blades	4
Propeller shaft material	stainless steel
Shaft lubrication	water
Electric bilge pump	yes
Electrical installation	12V / 24V / 220V
Start battery	1x 125 Ah
Service battery	2x Ecobat 270Ah AGM
Bowthruster battery	2x Optima Red Top 50Ah
Sternthruster battery	2x Optima Red Top 50Ah
Battery monitor	yes
Battery charger	Mastervolt 100A (start)
Battery charger/inverter	Mastervolt 2000W/100A (service)
Solar panel	2x Phaesun Sunplus + Victron Smartsolar (2 extra possible)
Shorepower	with cable
Extra info	2x alternator 12V - 100A (service/start) + 24V - 80A (thrusters)

NAVIGATION

Depth sounder/log	yes
VHF	Raymarine Ray 63
Rudder angle indicator	yes
Plotter/GPS	Monitor/touchscreen Nottrot N150KG - Yachtcontrol navigation
Weather receiver	yes
PC connection	MSI Cubi 5 mini (2024)
AIS transponder	EM-TrakB953 5W class B with VHF splitter
Camera	Front and rear
Extra info	Subscription for Yachtcontrol system needed

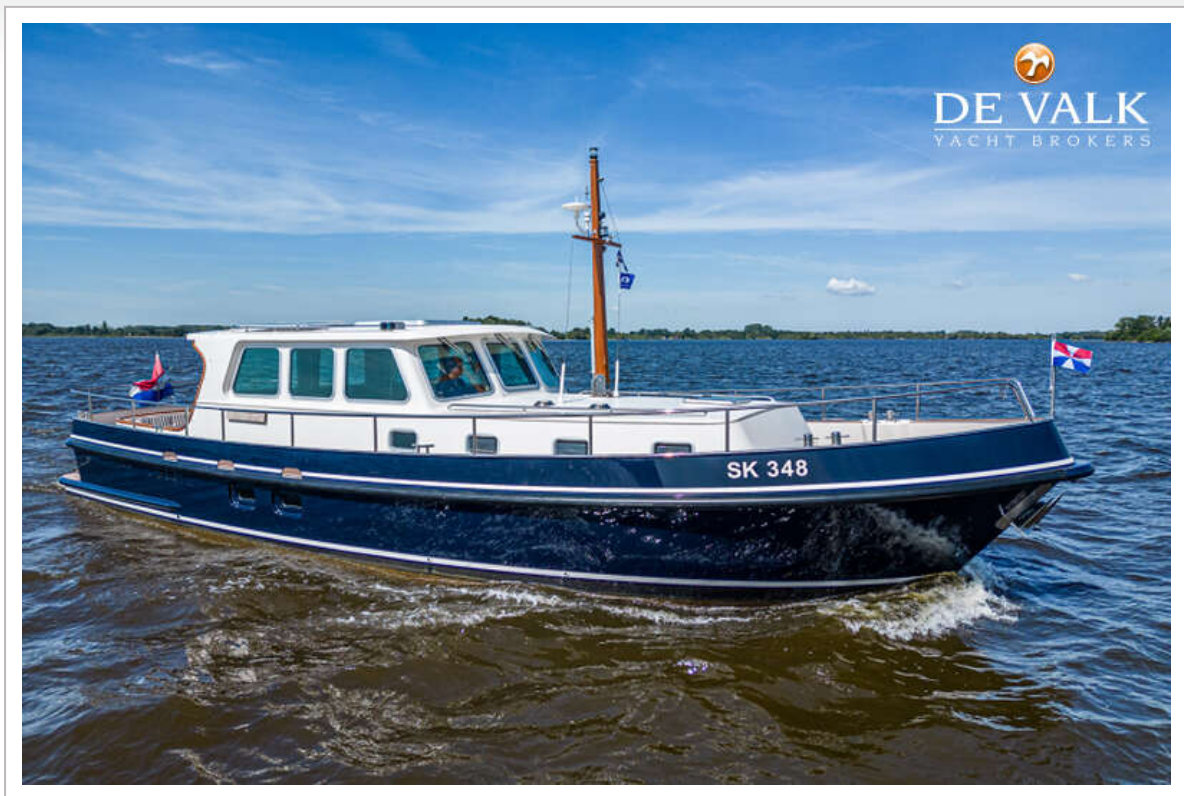


EQUIPMENT

Cockpit cover	yes
Cockpit cushions	yes
Bathing platform	yes
Boarding ladder	stainless steel
Anchor	yes
Anchor chain	30 m
Windlass	manual
Sea railing	stainless steel 316
Grab rail (superstructure)	stainless steel 316
Railing side opening gates	yes
Wiper	3x - Exalto wiper system
Horn	yes
TV	yes
Radio	Sony
Speakers in salon	yes
Extra info	Custom made system for carrying bicycles on bathing platform



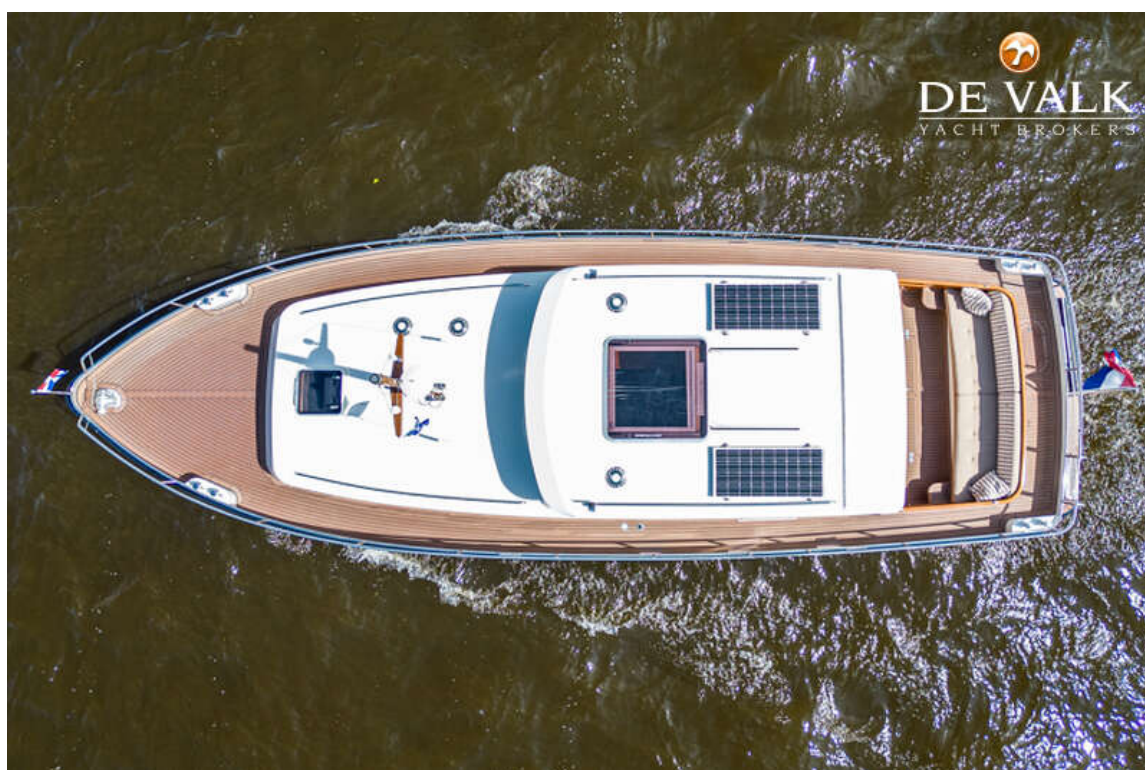
SK KOTTER PILOT 1250 OK



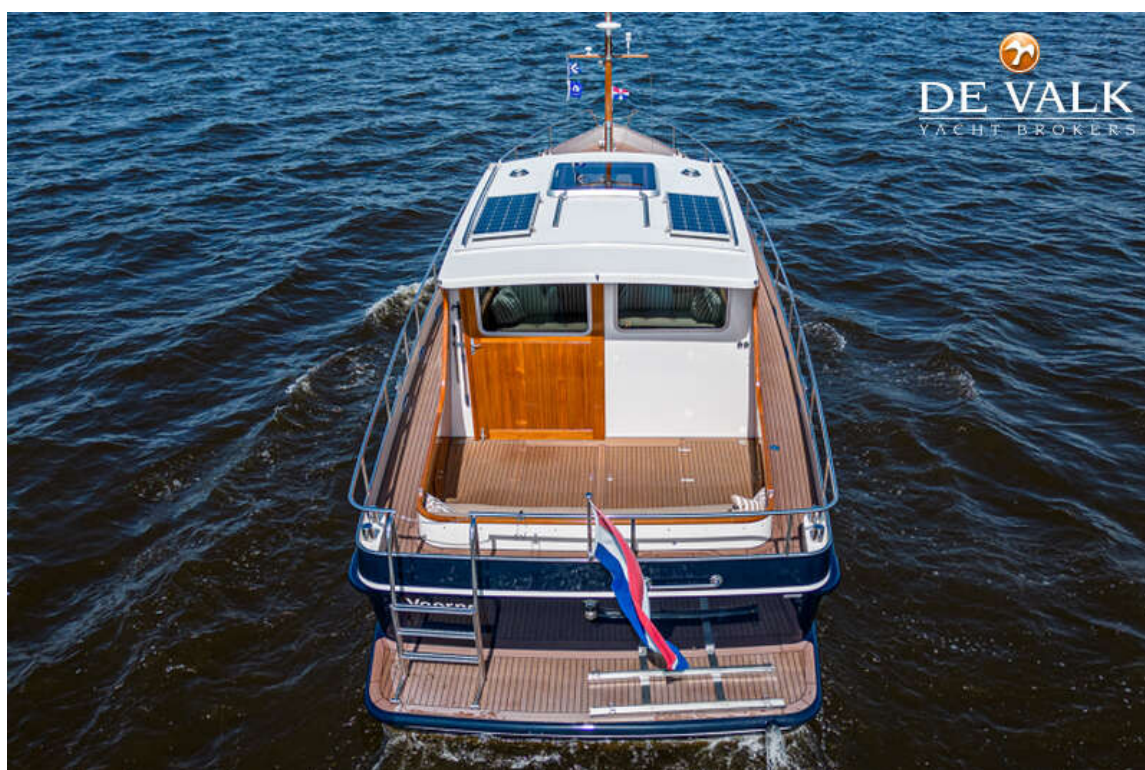
SK KOTTER PILOT 1250 OK



SK KOTTER PILOT 1250 OK



SK KOTTER PILOT 1250 OK



SK KOTTER PILOT 1250 OK

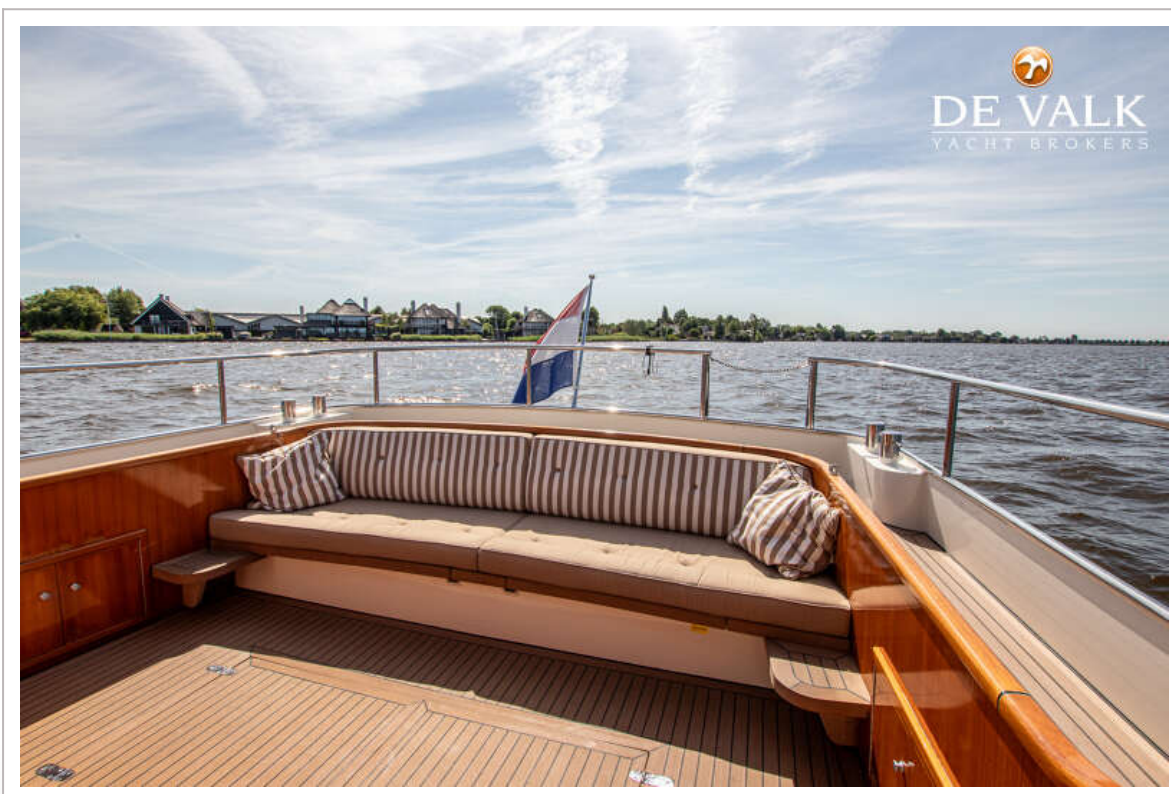
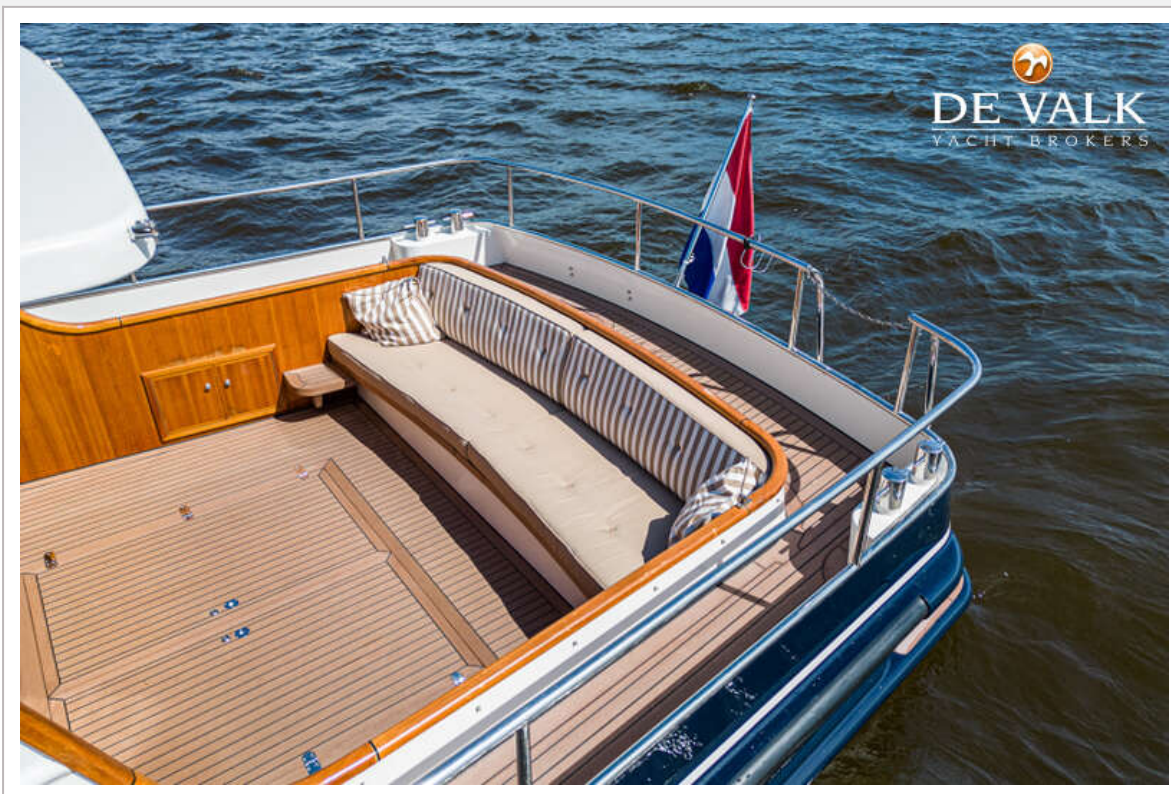




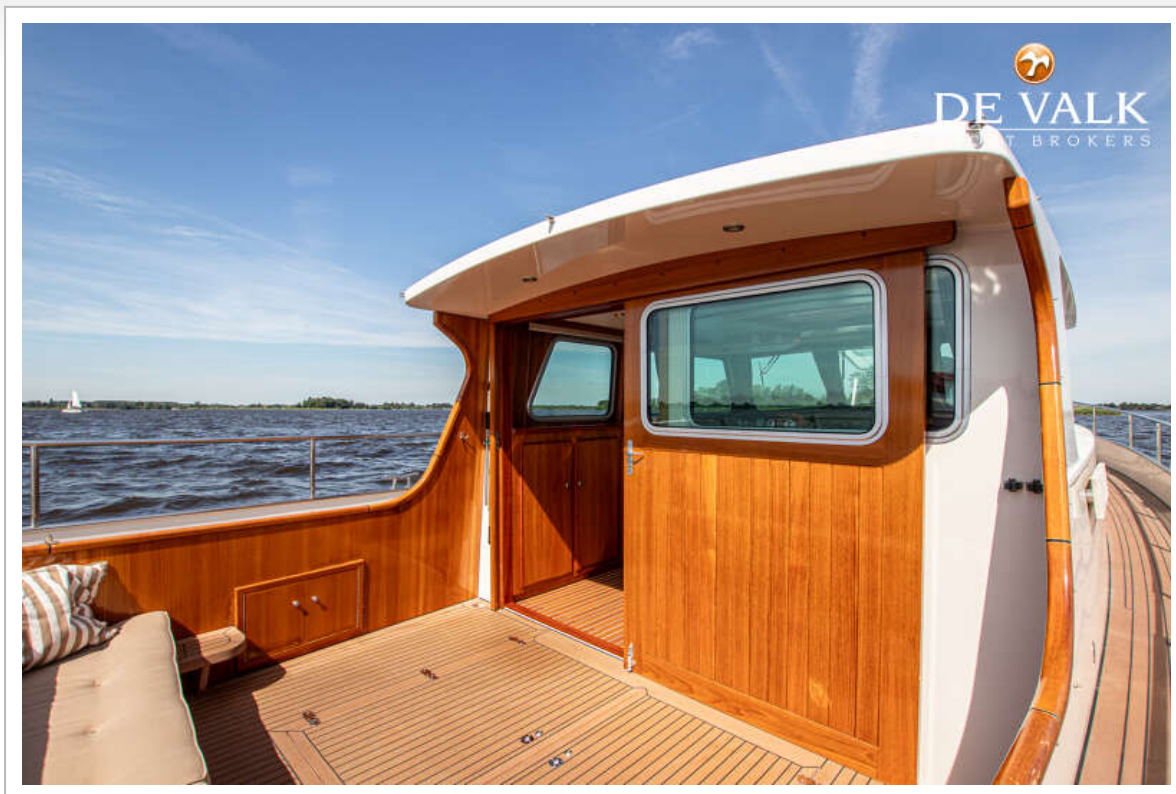
SK KOTTER PILOT 1250 OK



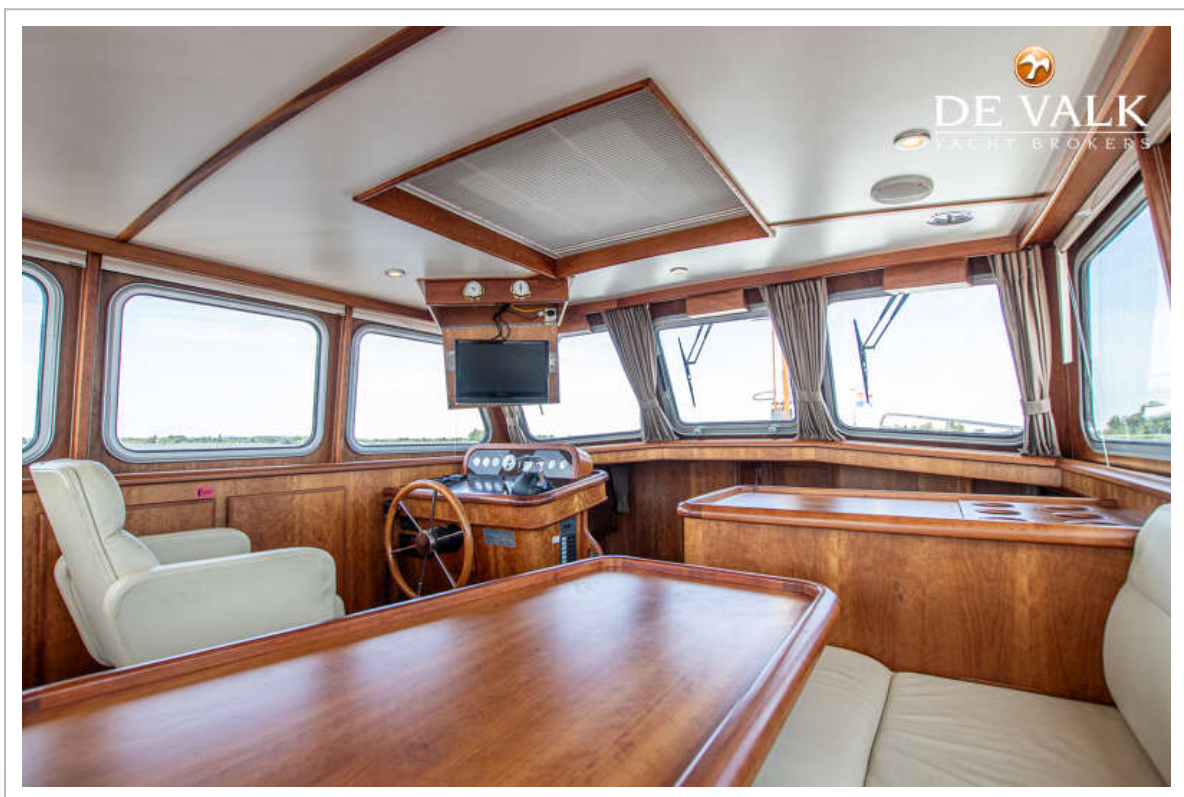
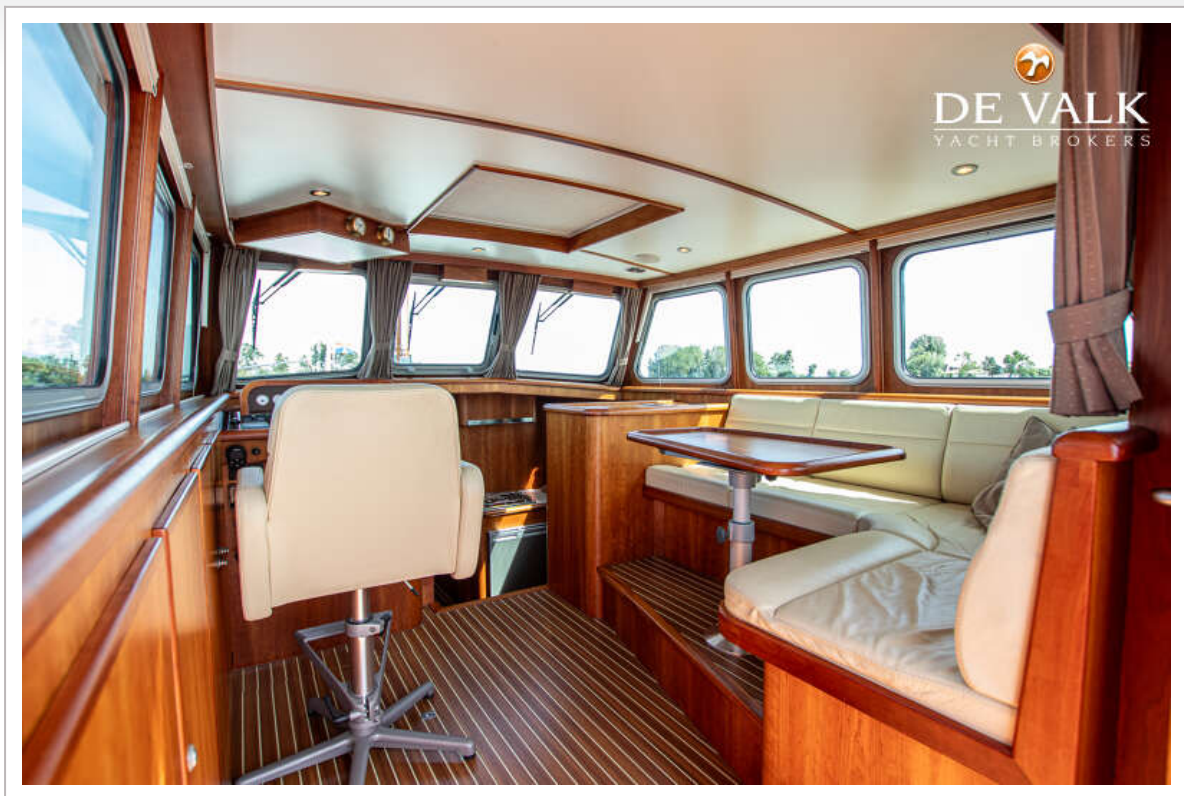
SK KOTTER PILOT 1250 OK



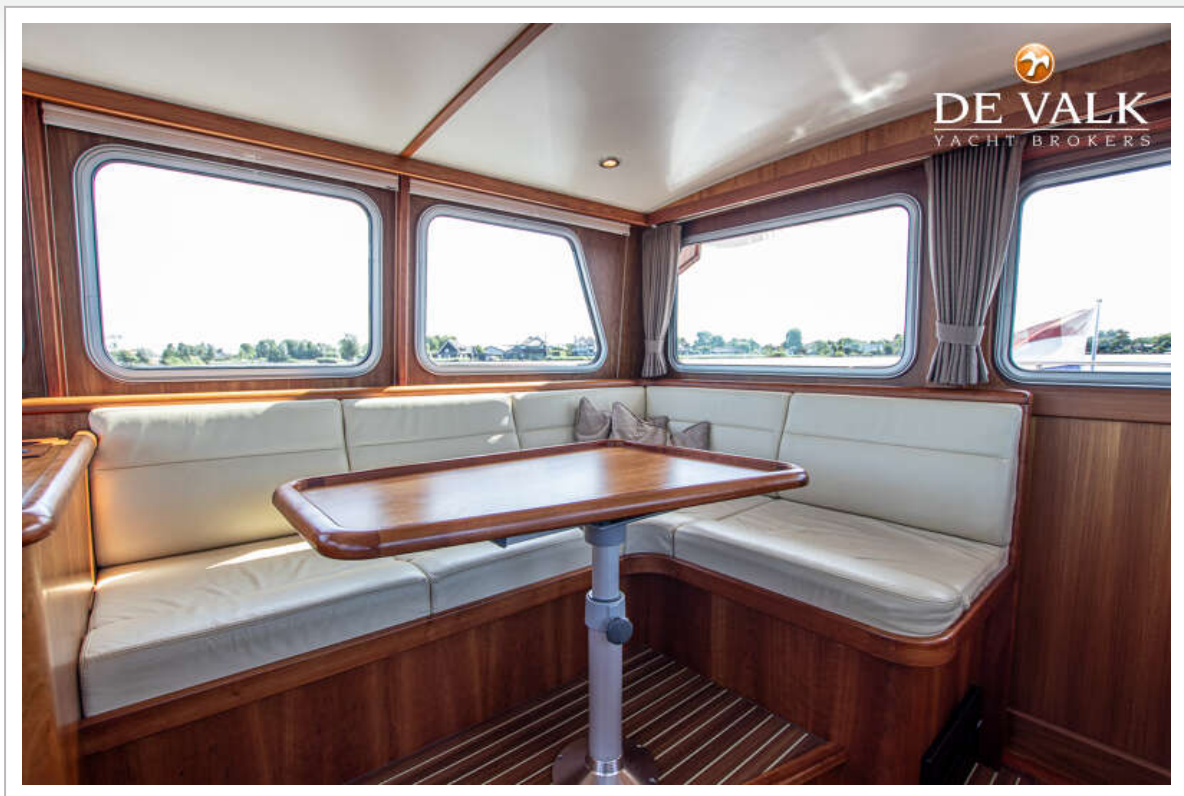
SK KOTTER PILOT 1250 OK



SK KOTTER PILOT 1250 OK



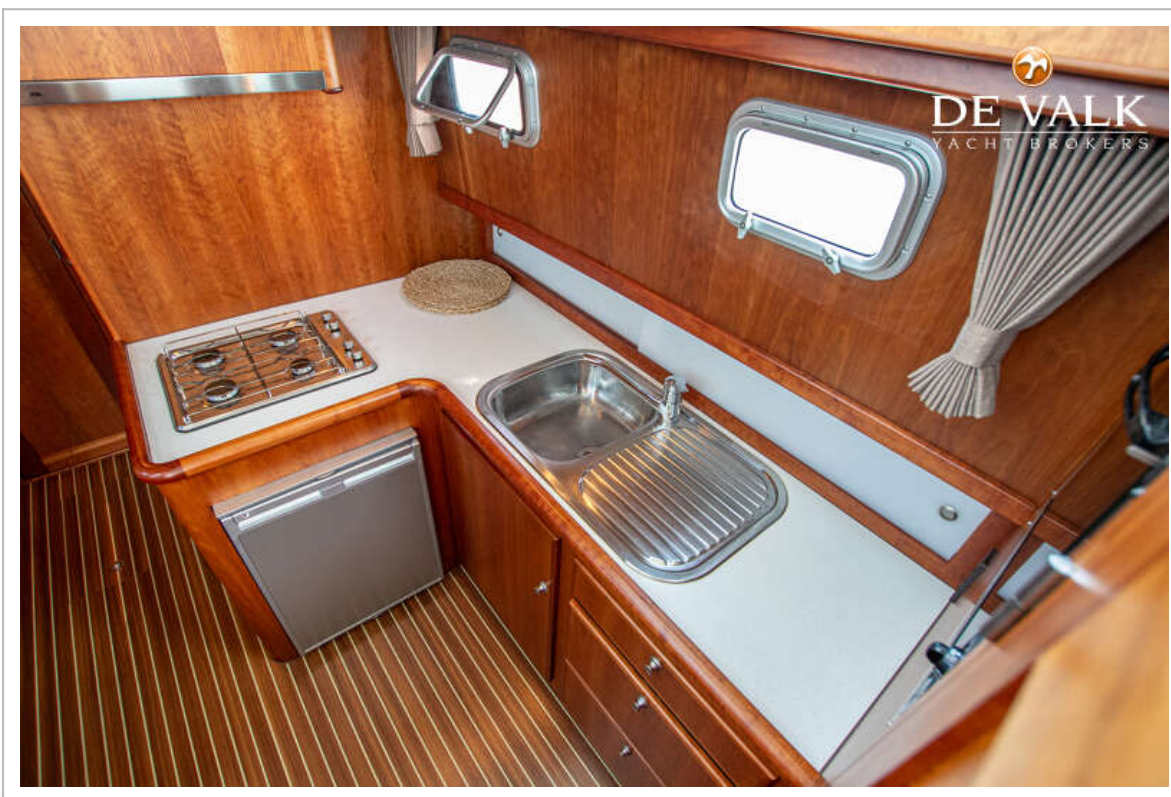
SK KOTTER PILOT 1250 OK



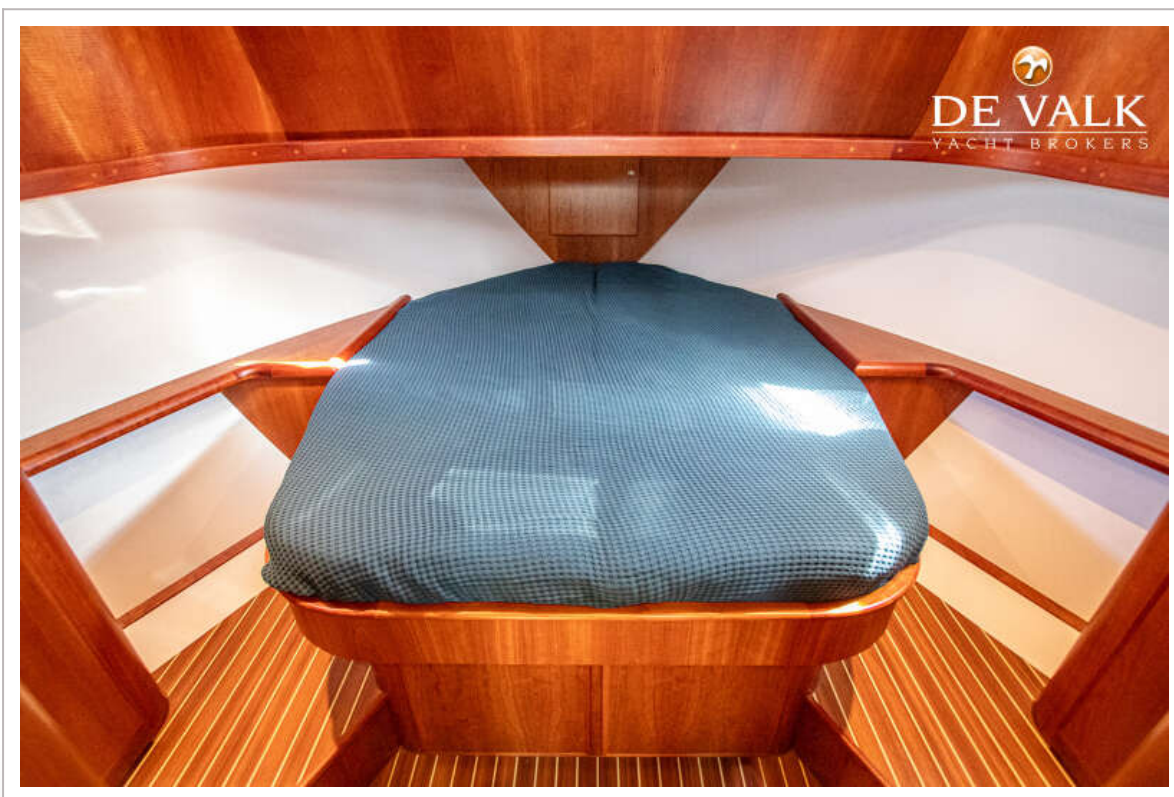
SK KOTTER PILOT 1250 OK



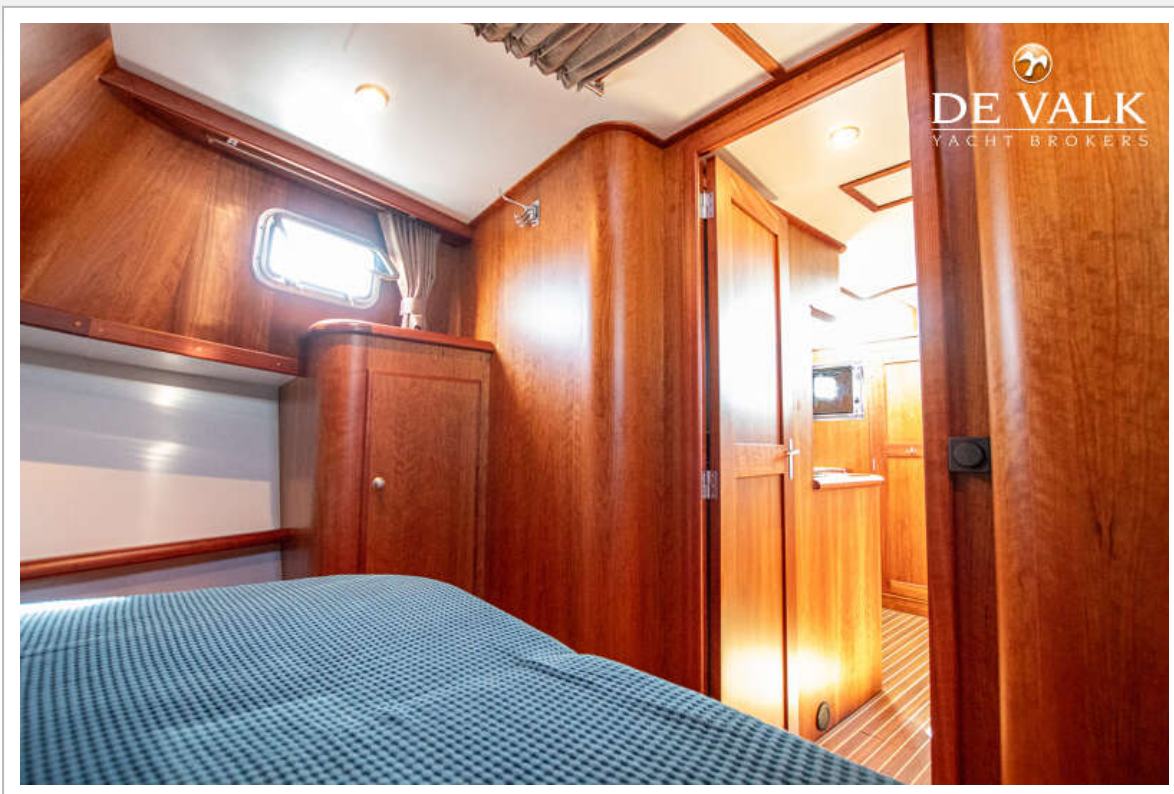
SK KOTTER PILOT 1250 OK

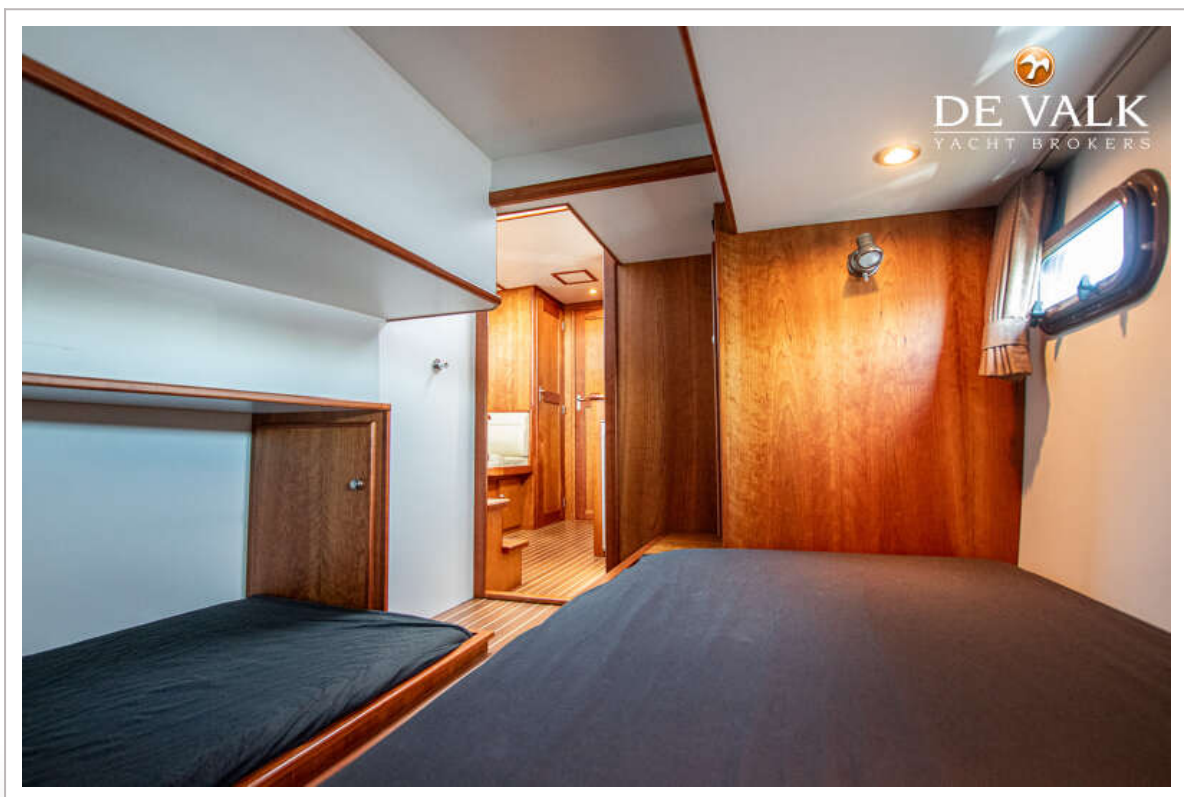
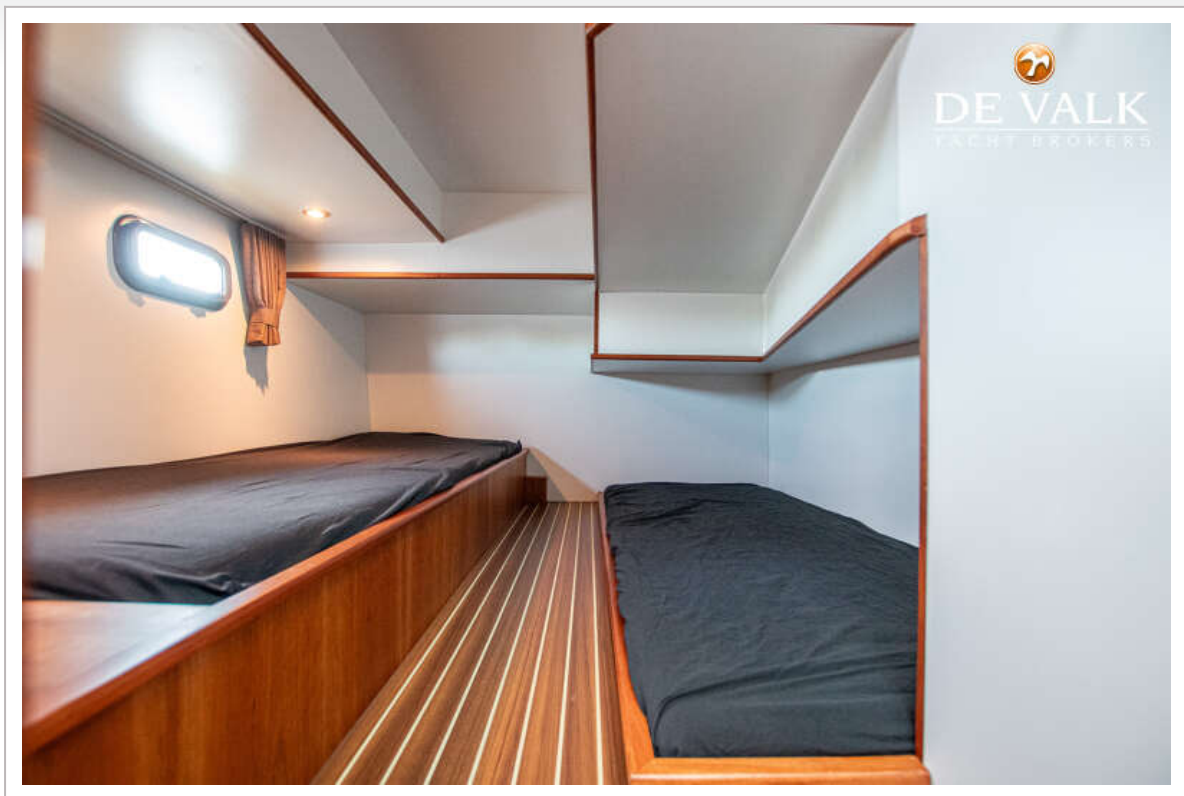


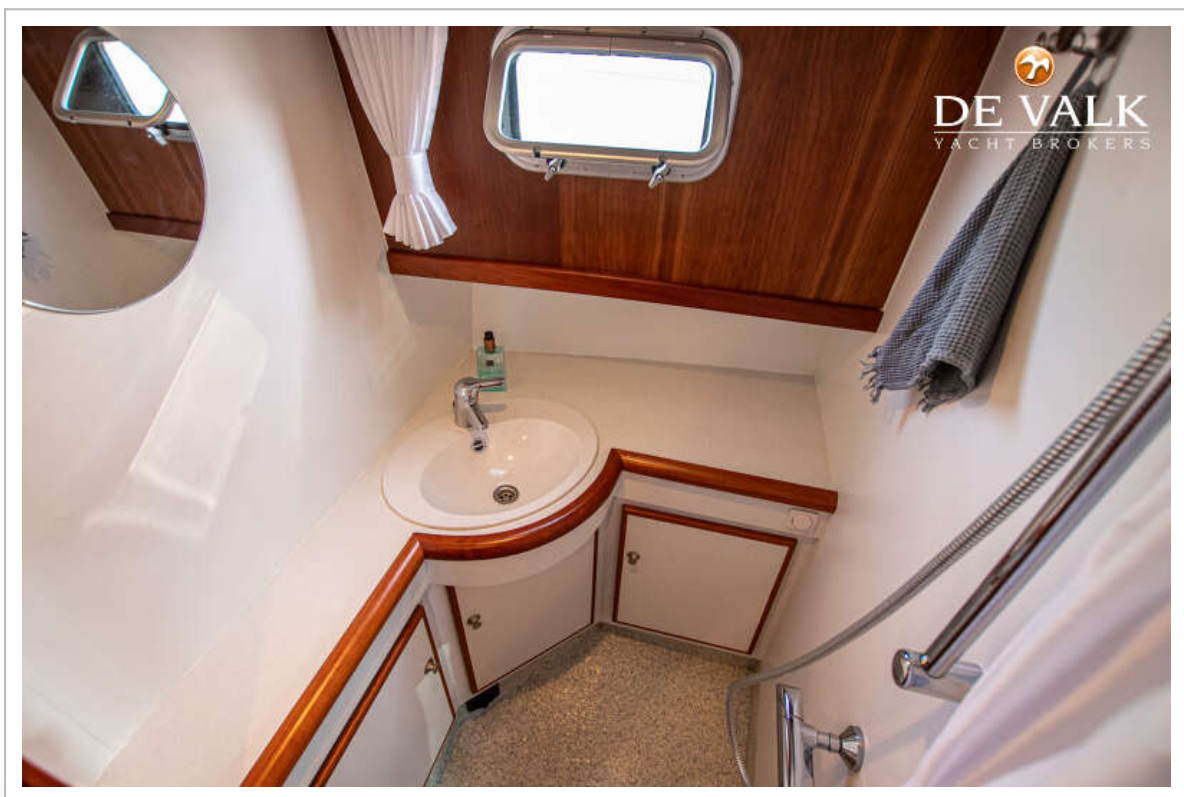
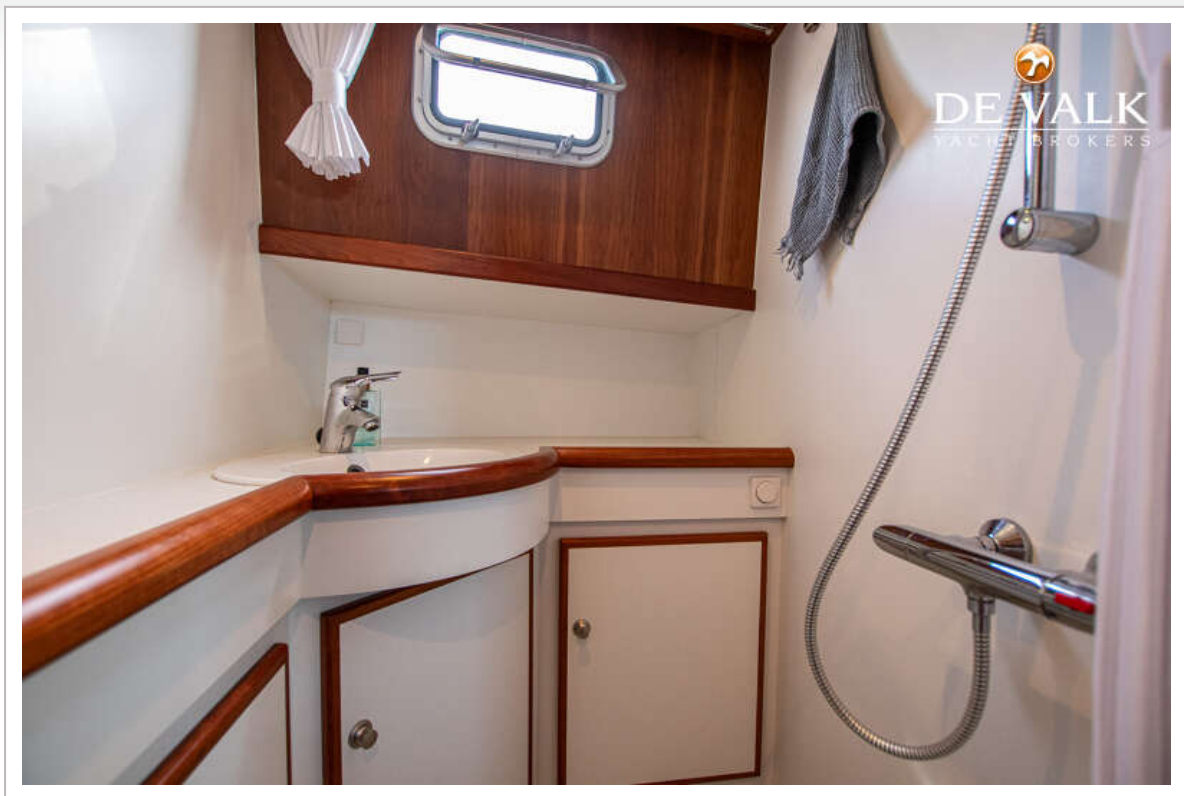
SK KOTTER PILOT 1250 OK

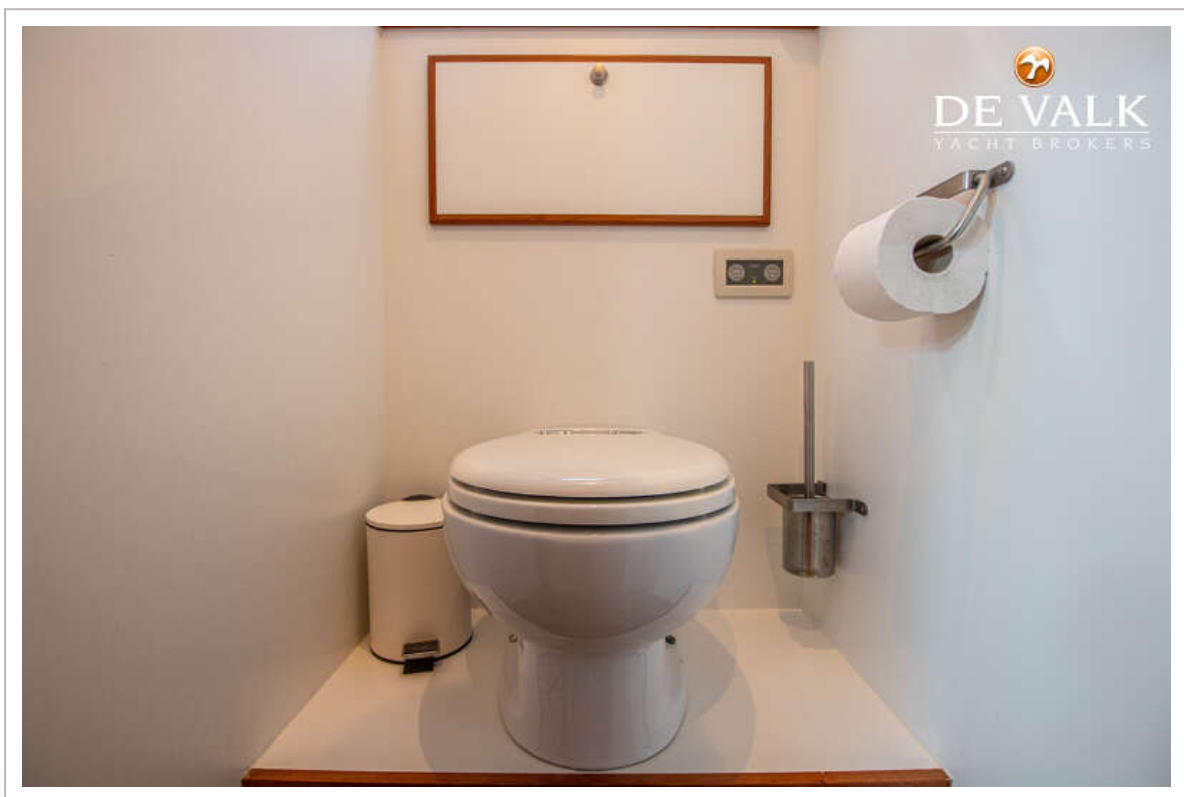
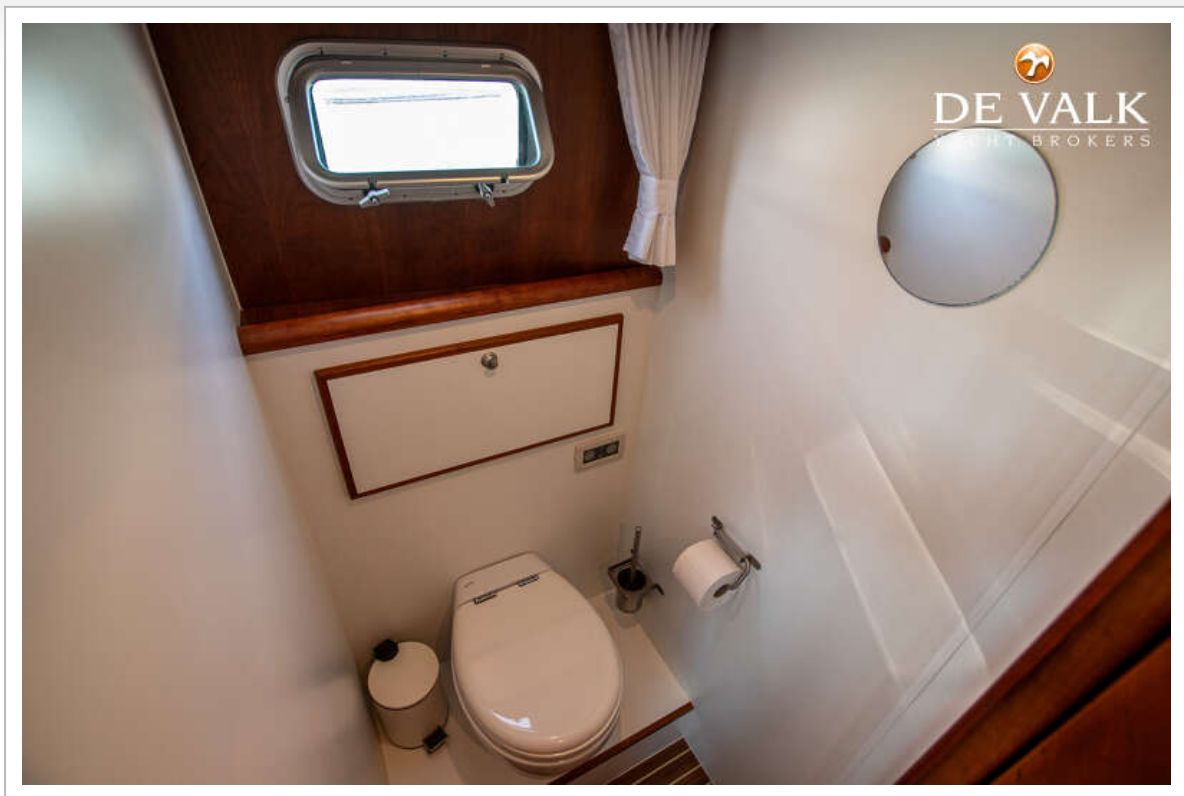


SK KOTTER PILOT 1250 OK









SK KOTTER PILOT 1250 OK



SK KOTTER PILOT 1250 OK



SK KOTTER PILOT 1250 OK

