



DE VALK
YACHT BROKERS



TALING MS 33



DE VALK
YACHT BROKERS

TALING MS 33

BROKER'S COMMENTS

This Taling MS 33 is a Dutch sailing yacht with traditional lines and comfortable wheelhouse. Above all, it is a seaworthy yacht, making her a beauty on the water. She has a new engine, bow thruster and new batteries. With her shallow draught she can navigate both inland and outland waterways. *** Due to the teak deck needing renovation, the price has been reduced *** She is ready for visitation on appointment near Hamburg, Germany.

Jürgen Jacobs

SPECIFICATIONS

Dimensions	10.75 x 3.15 x 1.50 (m)	Builder	Betuwe/ Alpha Boats
Built	1995	Cabins	2
Material	GRP	Berths	5
Engine(s)	1 x Nanni	Hp/Kw	38.00 (hp), 27.56 (kw)
Asking price	sold (VAT)	Lying	contact sales office

CONTACT

Sales office	De Valk Hamburg	Telephone	+49 40 46 000 999
Address	Domstraße 11 20095 Hamburg DE	E-mail	hamburg@devalk.nl

DISCLAIMER

These particulars are given in good faith as supplied but cannot be guaranteed.



GENERAL

Model	TALING MS 33
Type	sailing yacht
LOA (m)	10,75
Beam (m)	3,15
Draft (m)	1,50
Year built	1995
Builder	Betuwe/ Alpha Boats
Country	The Netherlands
Designer	Mr. C. Taal
Displacement (t)	7,5
Hull material	GRP
Hull colour	blue
Hull shape	S-bilged
Rubbing strake	wood
Deck finish	teak
Antifouling (year)	2022
Dorades	yes
Deckhatch	6
Fuel tank (litre)	stainless steel 150L
Freshwater tank (litre)	stainless steel 350L
Wheel steering	hydraulic Inside
Outside helm position	yes

ACCOMMODATION

Cabins	2
Berths	5
Interior	teak
Pilot house	yes
Deck saloon	yes
Pilot house/deck saloon	1,95



Headroom saloon (m)	1,85
Heating	Alaska by Dickinson
Heating 2	Ventilator
Galley	yes
Countertop	plastic
Sink	stainless steel
Cooker	calor gas 2 flamed
Fridge	Isotherm 2021
Hot water system	Isotherm boiler 30L
Owners cabin	v-bed
Bed length (m)	1,95m
Wardrobe	drawers
Bathroom	shared
Toilet	RM69
Toilet system	yes
Wash basin	at the toilet

MACHINERY

No of engines	1
Make	Nanni
HP	38
kW	27.56
Year installed	2016
Engine hours	275
Shaft seal	Volvo
Bowthruster	SP 75 T Side Power 2006
Batteries	2020
Extra info	Engine maintenance 2021

NAVIGATION

Compass	yes
---------	-----



Depth sounder/log	Raymarine I70 2019
VHF	Shipmate RS 8300
Autopilot	B&G Hydra Pilot
Radar	Dome 45cm op paal
GPS	Furuno 2007
Radar/plotter	C80 Raymarine 2007
Electronis chart(s)	yes

EQUIPMENT

Cockpit cover	2006
Sun awning	yes
Winter cover	yes
Cockpit table	yes
Boarding ladder	stainless steel
Bow ladder	yes
Gangway	yes
Anchor	Fortress
Anchor chain	50m/ 10mm
Davits	1x
Sea railing	yes
Wiper	yes
Radio	JVC
Clock - barometer	yes

RIGGING

Rigging	yes
Standing rigging	wire
Mainsail	22m2
Cutterstay	16m2
Genoa	40.8m2
Genoa furler	Selden



Cutter furler

Gennaker

Selden

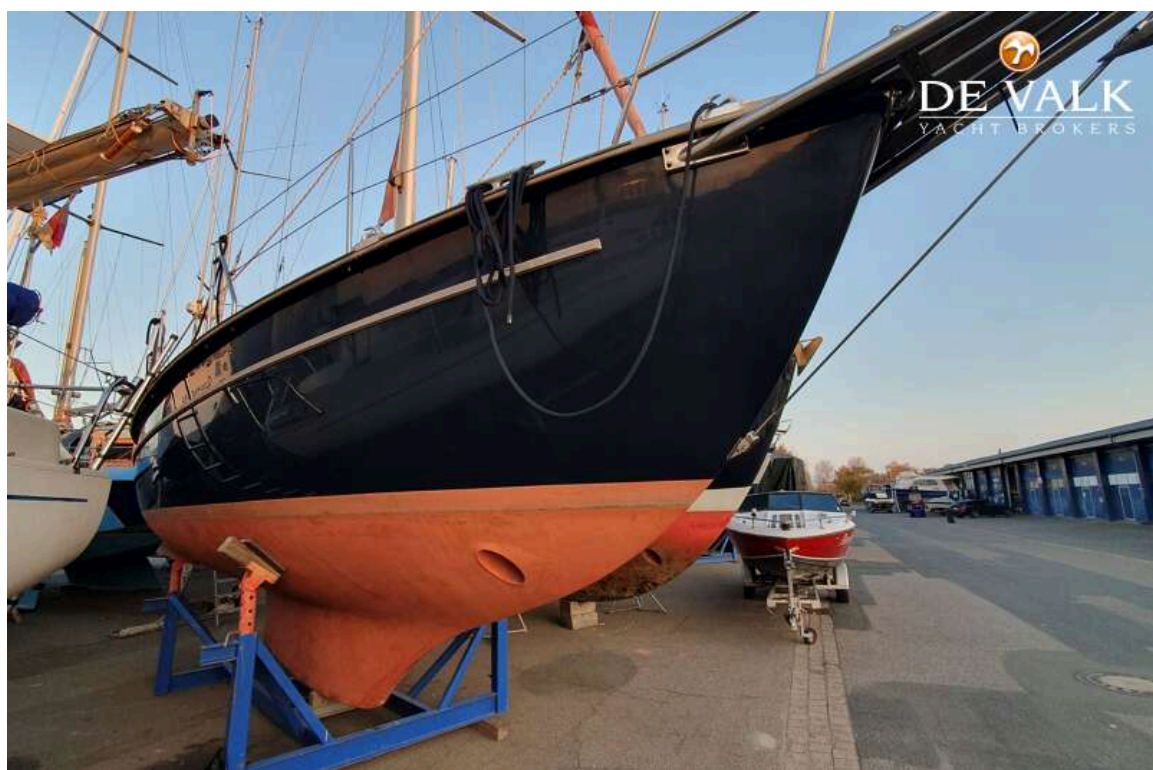
70m2 Miedema Sails Heeg met slurf 2010



TALING MS 33

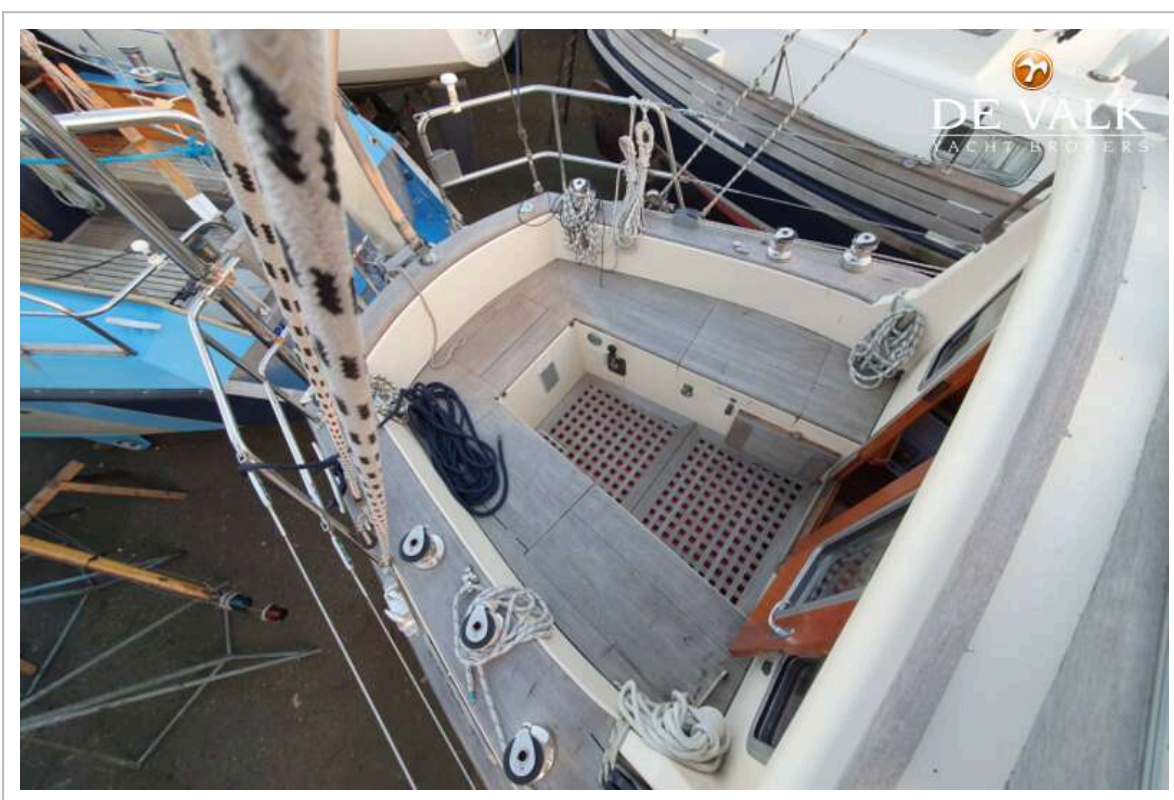
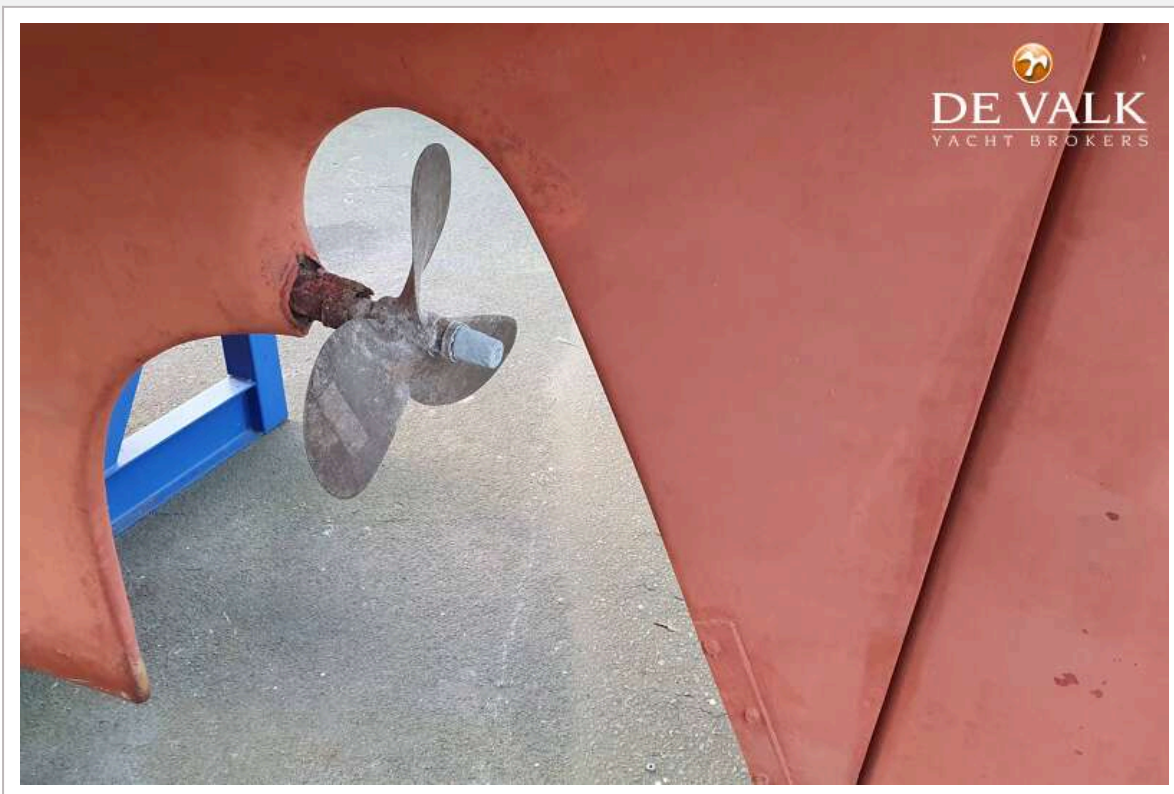


TALING MS 33



TALING MS 33

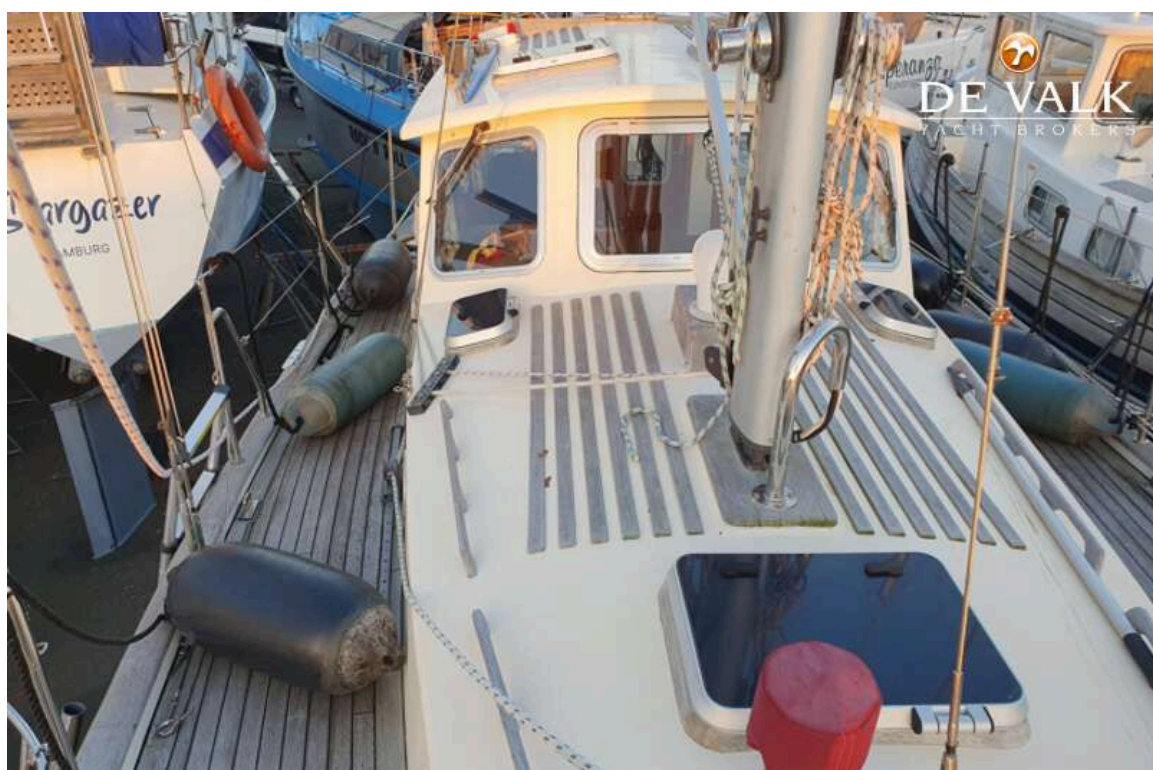




TALING MS 33



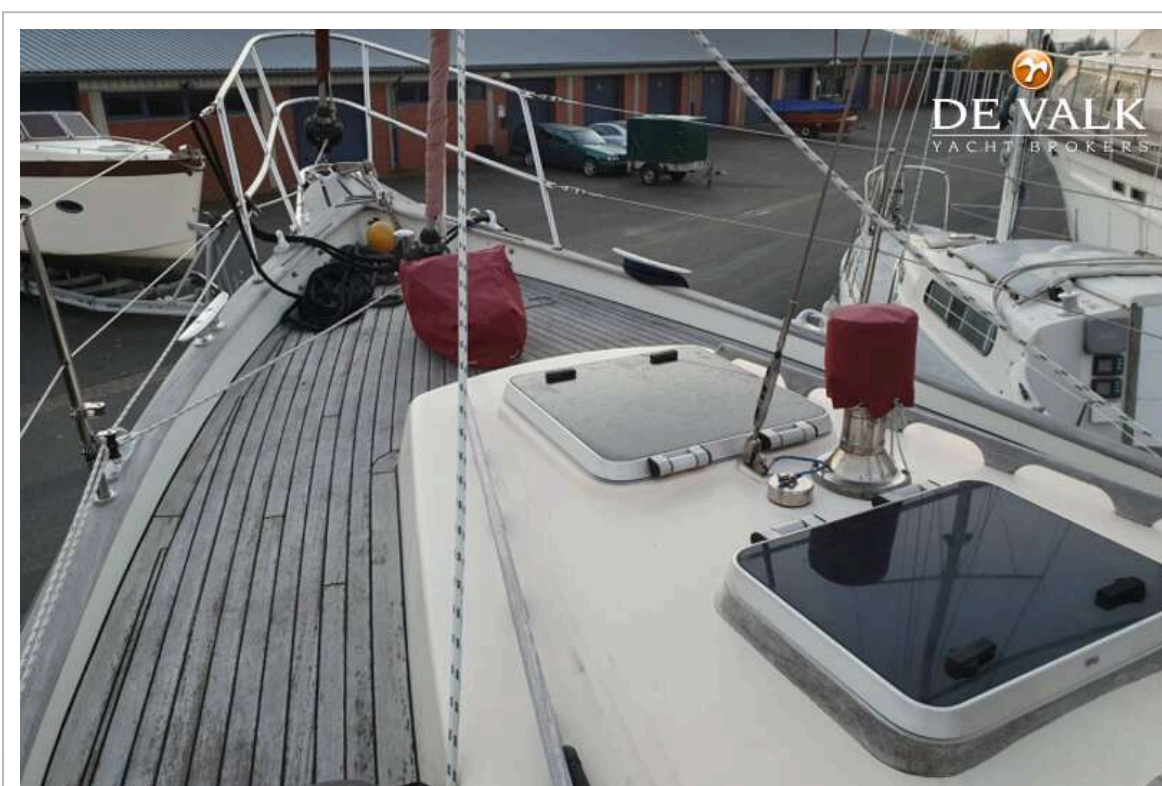
TALING MS 33

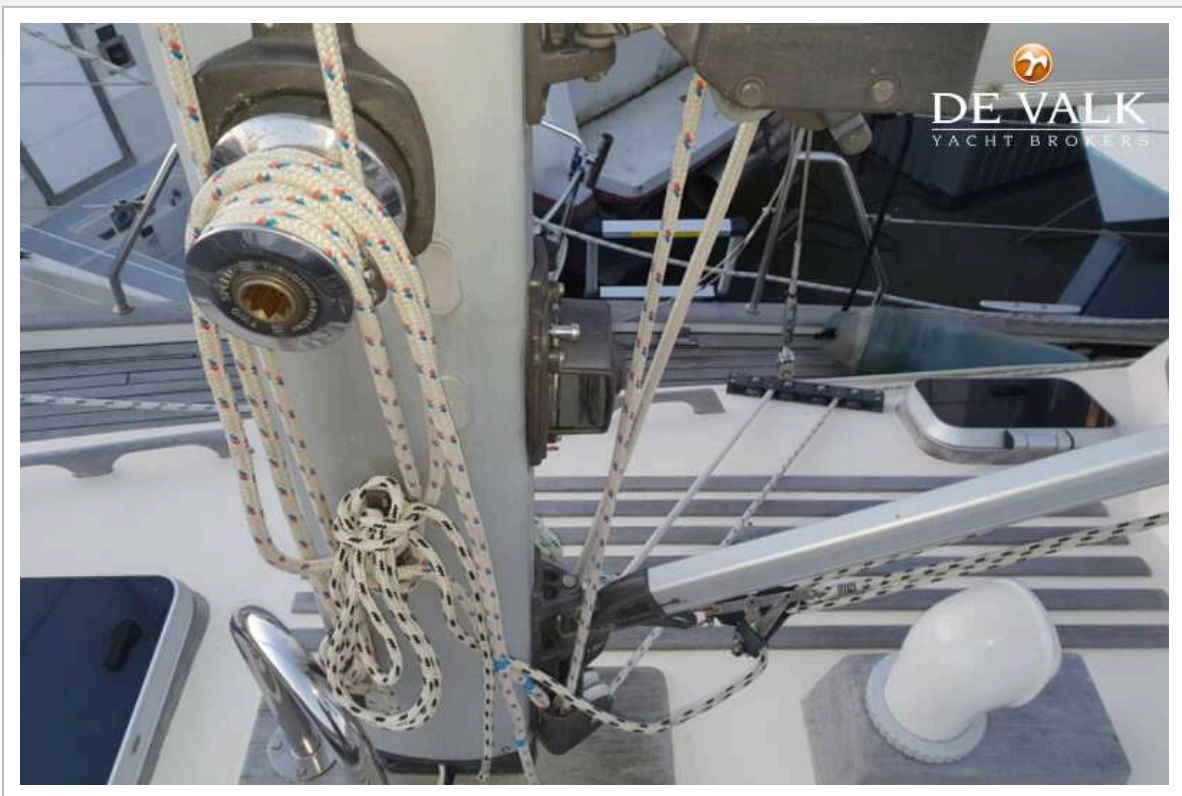


TALING MS 33

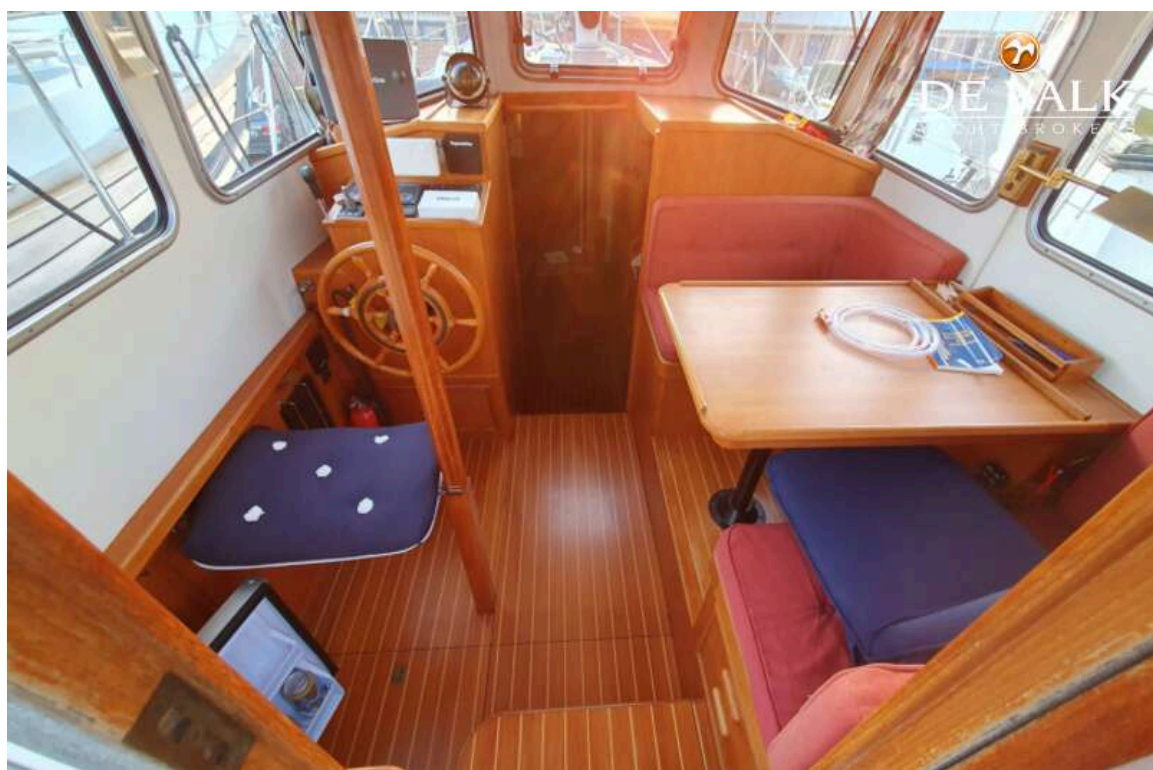


TALING MS 33

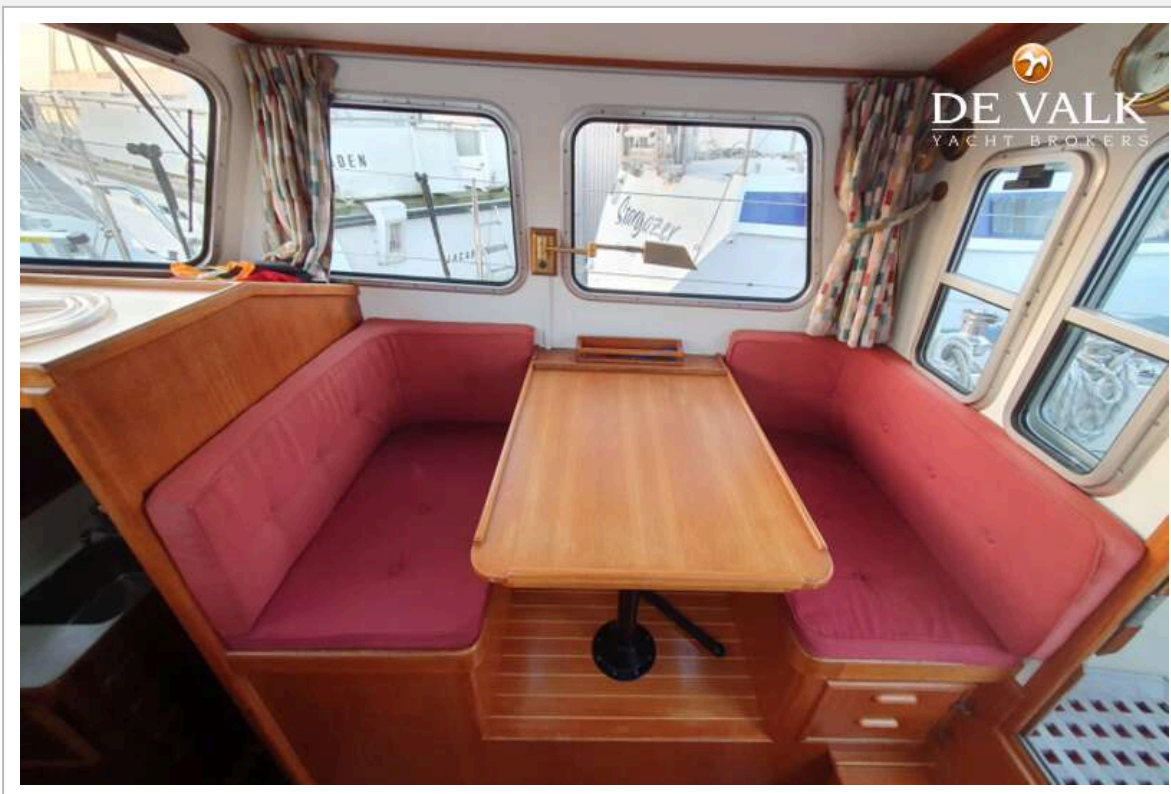




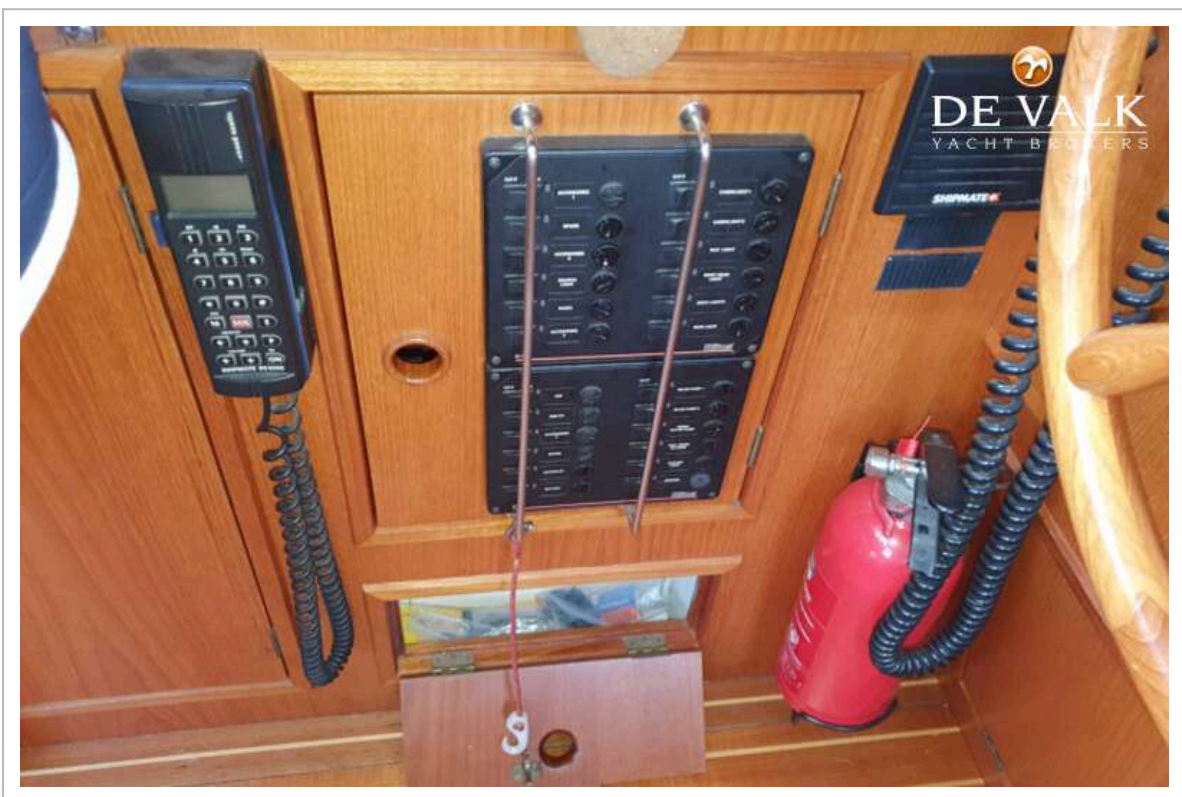
TALING MS 33



TALING MS 33



TALING MS 33



TALING MS 33



TALING MS 33

