



DE VALK
YACHT BROKERS



DEHLER 36 JV



DE VALK
YACHT BROKERS

BROKERAGE | CHARTER | BERTHS | FINANCE | INSURANCE | YACHT MANAGEMENT

BROKER'S COMMENTS

Dehler 36 JV from 2002, Performance Racer-Cruiser in excellent condition and well maintained. New Perkins engine in 2016 (1270 engine hours). Topsides re-painted with original navy gelcoat in 2017. Deck resurfaced with non-skid elastomeric system in 2019. Hull sanded/stripped to base and then complete re-application of primer/anti-fouling in 2020. Many extras and upgrades included

Sofia Iliia-Salvanou

SPECIFICATIONS

Dimensions	10.95 x 3.50 x 1.95 (m)	Builder	DEHLER GmbH
Built	2002	Cabins	3
Material	GRP	Berths	5
Engine(s)	1 x Perkins JML3.29 403D-11 diesel	Hp/Kw	28.00 (hp), 20.61 (kw)
Asking price	€ 64.000 (VAT Paid)	Lying	elsewhere / Not at sales office

CONTACT

Sales office	De Valk Corfu	Telephone	(+30) 266 111 8095
Address	New Port of Corfu, near Gouvia Marina 490 83 Corfu GR	E-mail	corfu@devalk.nl

DISCLAIMER

These particulars are given in good faith as supplied but cannot be guaranteed.



GENERAL

Model	DEHLER 36 JV
Type	sailing yacht
LOA (m)	10,95
LWL (m)	9,95
Beam (m)	3,50
Draft (m)	1,95
Air draft (m)	18,80
Air draft min (m)	18,80
Headroom (m)	1,90
Year built	2002
Builder	DEHLER GmbH
Country	Germany
Designer	Judel & Frolijk
Displacement (t)	6
Ballast (tonnes)	cast iron and lead 2,2
Gross tonnage	13,41
Net tonnage	12,76
CE norm	A
Hull material	GRP
Hull colour	blue Navy
Hull shape	round-bilged
Keel type	fin keel
Superstructure material	GRP
Deck material	GRP
Deck finish	TBS non-skid profile mats
Cockpit deck finish	TBS non-skid profile mats
Antifouling (year)	2022
Window frame	aluminium
Window material	polycarbonate
Deckhatch	yes



Portholes	aluminium
Fuel tank (litre)	stainless steel 90
Level indicator (fuel tank)	yes
Freshwater tank (litre)	polyethylene 400
Level indicator (freshwater)	yes
Blackwater tank (litre)	stainless steel 47
Blackwater tank extraction	deck extraction
Wheel steering	cable steering Chain
Emergency tiller	yes
More info on paintwork	Topsides repainted in 2017 with navy gelcoat

ACCOMMODATION

Cabins	3
Berths	5
Interior	cherry
Floor	woodprint
Saloon	yes
Headroom saloon (m)	1,9
Heating	diesel ducted hot air WEBASTO
Chart table	yes
Aft Cabin	yes
Dinette to convert into berth	yes
Galley	yes
Countertop	corian
Sink	stainless steel
Cooker	calor gas
Oven	yes
Fridge	yes
Hot water system	220V + engine
Water pressure system	electrical
Kettle	yes



Crockery	yes
Owners cabin	v-bed
Wardrobe	hanging and shelves
Bathroom	shared
Toilet	shared
Toilet system	manual
Wash basin	in the bathroom
Shower	shared
Guest cabin 1	double bed
Wardrobe	hanging and shelves
Bathroom	shared
Toilet	shared
Toilet system	manual
Wash basin	in the bathroom
Shower	shared
Guest cabin 2	single bed
Wardrobe	shelves

MACHINERY

No of engines	1
Make	Perkins
Type	JML3.29 403D-11
HP	28
kW	20.61
Fuel	diesel
Year installed	2016
Maximum speed (kn)	7
Cruising speed (kn)	6
Consumption (l/hr)	3
Range (nm)	180
Engine hours	1271



Engine cooling system	freshwater heat exchanger
Drive	sail-drive
Saildrive seal	yes
Engine controls	electrical & bowden cable
Propeller type	fixed
Propeller blades	2
Propeller shaft material	stainless steel
Shaft lubrication	grease
Electric bilge pump	yes
Batteries	yes
Start battery	yes
Service battery	yes
Battery charger	yes
Solar panel	150W
Shorepower	yes

NAVIGATION

Compass	yes
Electric compass	yes
Depth sounder	Raymarine ST60
Windset	Raymarine ST60 Wind & Close Hauled Wind
VHF	ICOM 601 DSC enabled
VHF handheld	ICOM
Autopilot	yes
Rudder angle indicator	yes
GPS	Raymarine 125
Plotter	Raynav 320
Navtex	yes
EPIRB	yes
Navigation lights	yes
Searchlight	Handheld 12V



EQUIPMENT

Sprayhood	yes
Bimini	yes
Cockpit cushions	yes
Cockpit table	yes
Boarding ladder	yes
Gangway	Teak/SS Folding/removable with embedded stern base
Deck shower	yes
Anchor	Delta
Anchor chain	yes
Anchor 2	Brittany
Windlass	Lofrans
Dinghy	inflatable 2,40 m
Outboard	Yamaha Malta 3 Hp
Sea railing	wire Dyneema
Grab rail (superstructure)	stainless steel
Railing side opening gates	1 Starboard aft
Life raft	BFA Atlantic 6 PAX
Life raft (pers)	6
Last life raft survey	2022
Lifejackets	8
Safety harness	4
Lifebuoy	yes
Safety lines on deck	yes
Rope cutter	yes
Clearview window	yes
Binocular	yes
Fenders	yes
Mooring lines	yes
Spare parts	yes
Tools	yes



Radio-cd player	yes
Cockpit speakers	yes
Speakers in salon	yes
Fire extinguisher	X 2
Latest extinguisher survey	2022
Extra info	New engine installed 2016
Extra info	Antifouling: SEA JET every year
Extra info	Owner since 2002

RIGGING

Rigging	fractional Sloop
Brand mast	Sparcraft
Material mast	aluminium
Spreaders	yes
Keel stepped mast	yes
Mainsail	yes
Mainsail cover	yes
Battcars	yes
Fully battened mainsail	yes
Genoa	yes
Genoa furler	yes
Spinnaker	yes
Reefing System	slabreefing
Backstay adjuster	mechanical
Boomvang	gasspring
Primary sheet winch	yes
Genoa sheetwinches	yes
Spi-pole	aluminium



DEHLER 36 JV



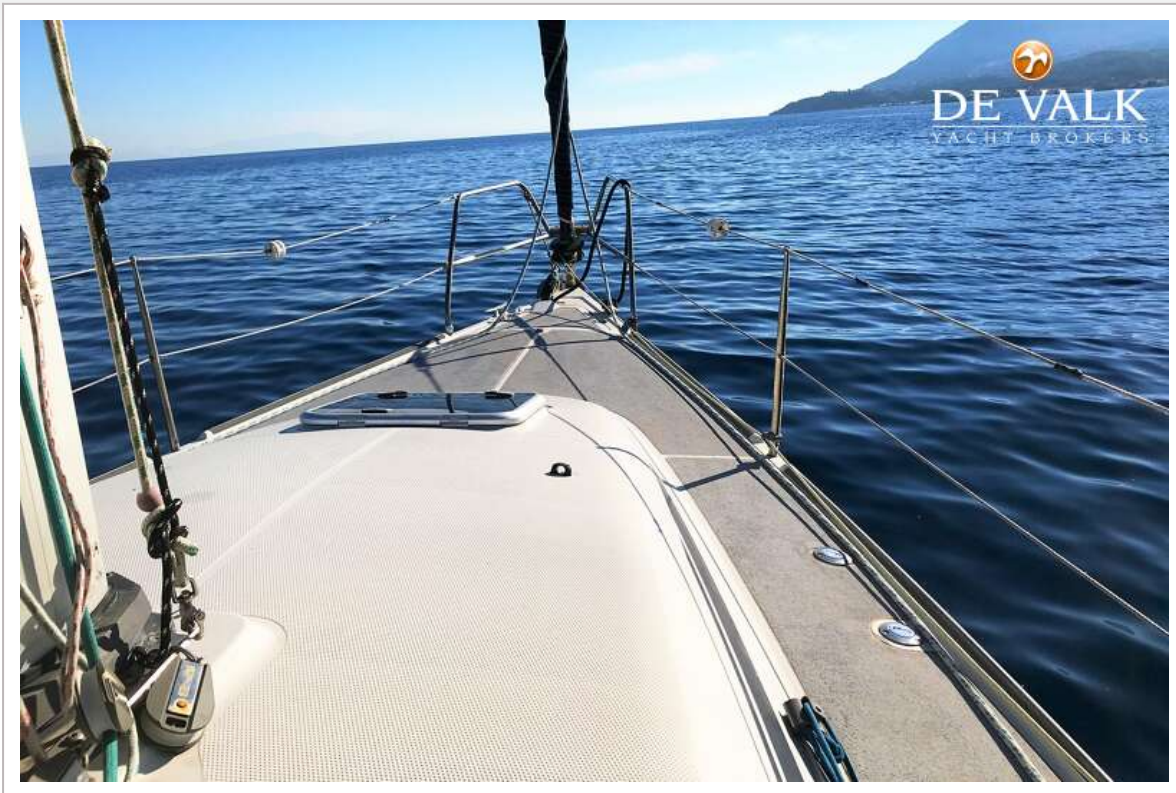
DEHLER 36 JV



DEHLER 36 JV



DEHLER 36 JV



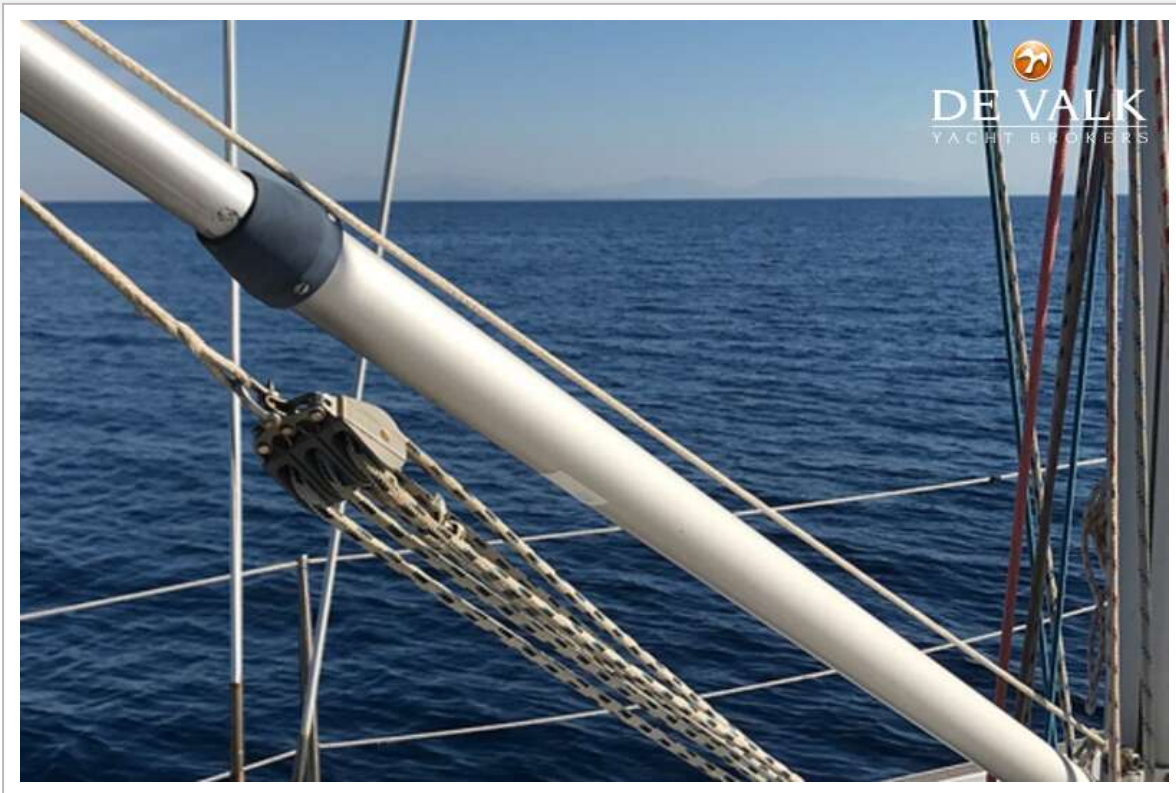
DEHLER 36 JV



DEHLER 36 JV



DEHLER 36 JV



DEHLER 36 JV





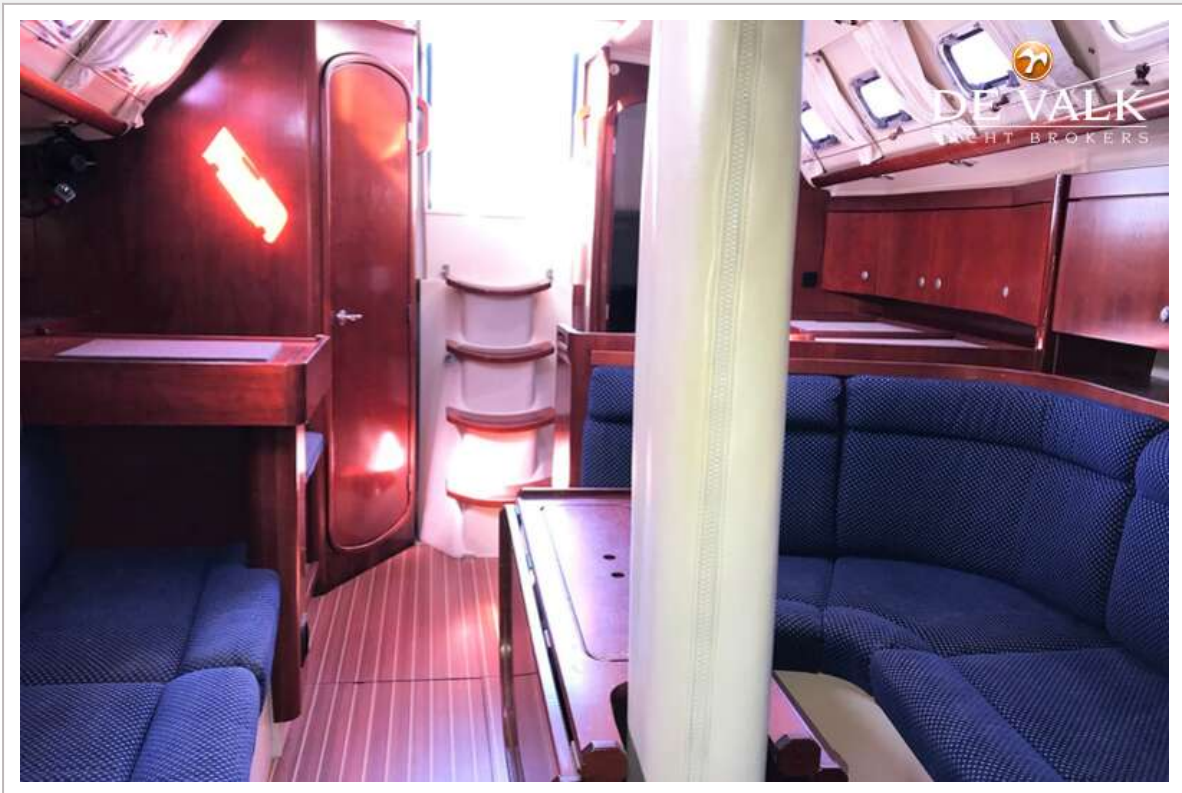
DEHLER 36 JV

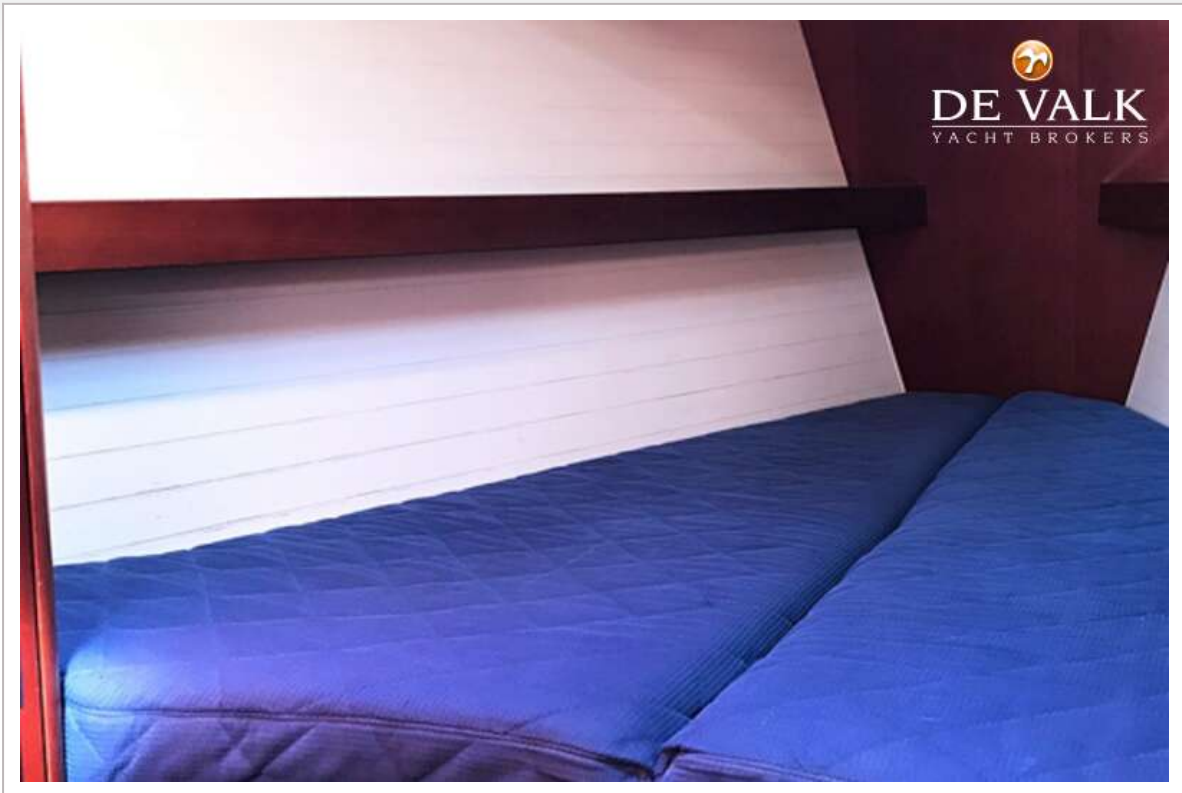


DEHLER 36 JV

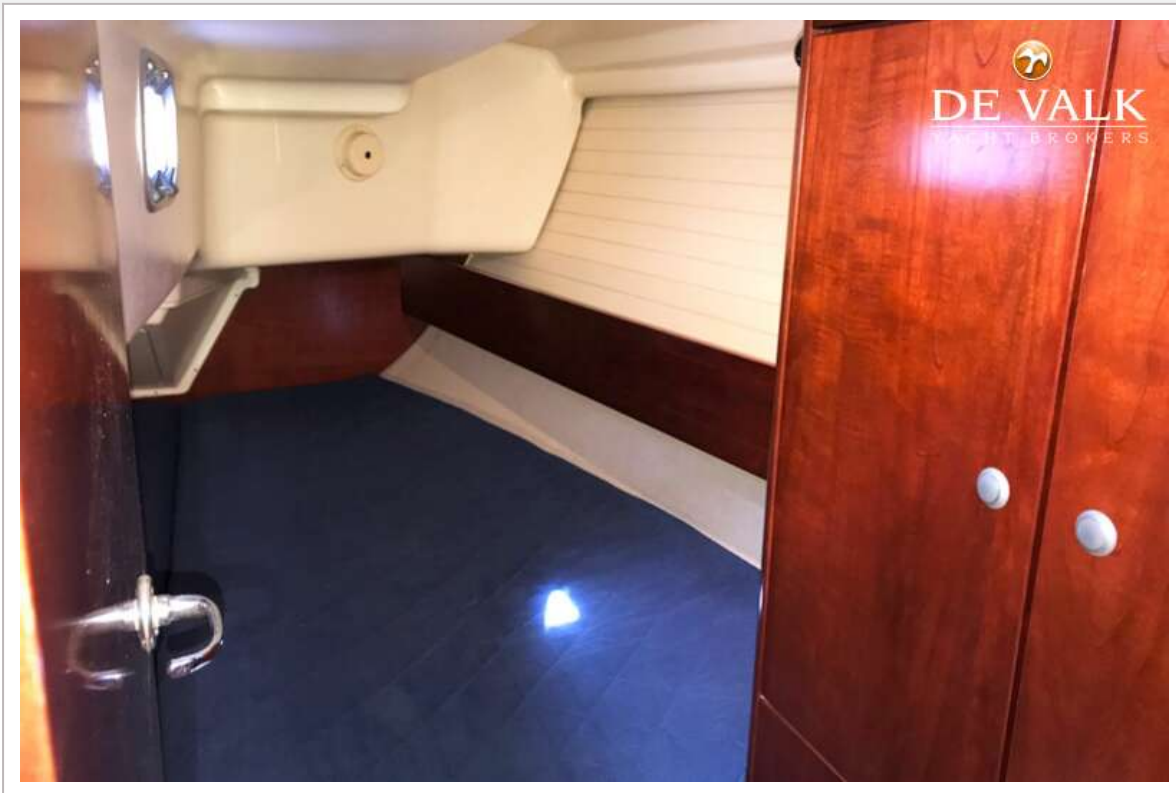


DEHLER 36 JV





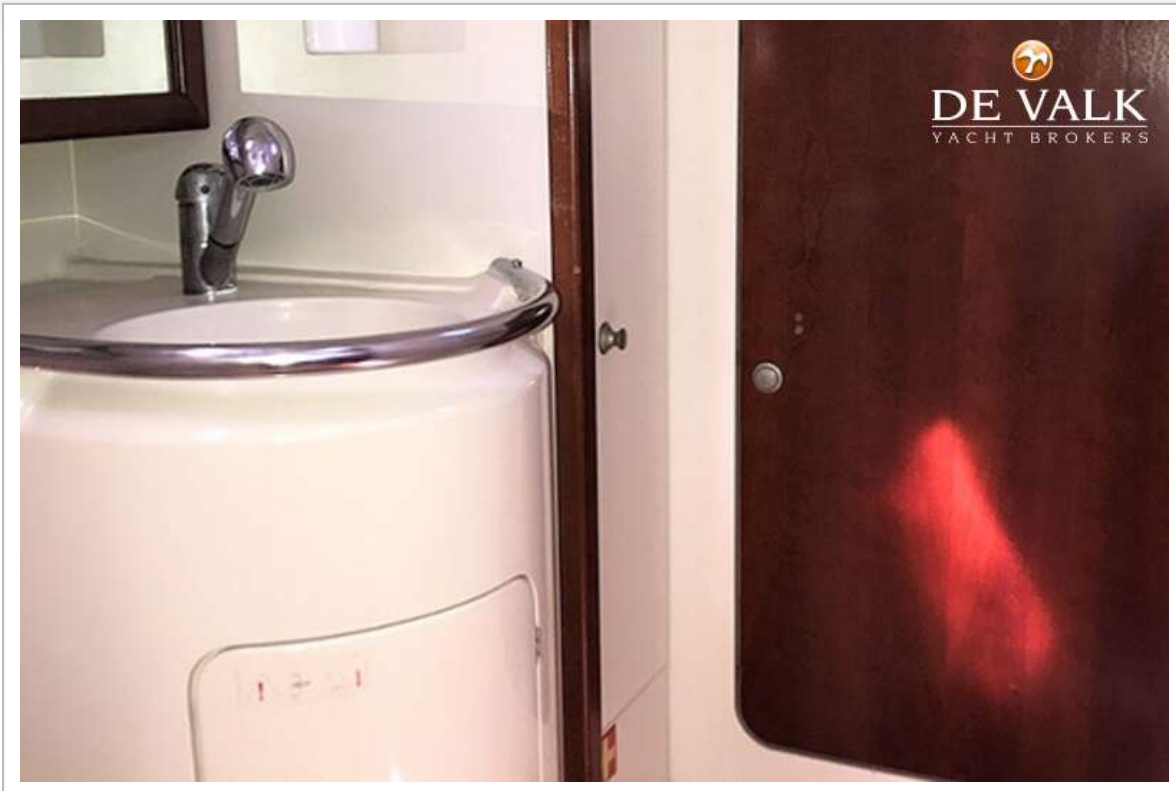
DEHLER 36 JV



DEHLER 36 JV



DEHLER 36 JV



DEHLER 36 JV

