



DE VALK  
YACHT BROKERS



LINSSEN GRAND STURDY 33.9 AC



DE VALK  
YACHT BROKERS

# LINSSSEN GRAND STURDY 33.9 AC

## BROKER'S COMMENTS

This Linssen Grand Sturdy 33.9 is in very clean condition. Easy to drive by one person with the Volvo Penta diesel engine and electric bow and stern thruster. Equipped with two cabins with double berths and the dinette can be converted into a double berth, giving this Linssen a total of six berths. You are welcome to make an appointment to view this beautiful Linssen Grand Sturdy 33.9 called "Chapter 2" in Belgium.

*Jochem Heijermans*

## SPECIFICATIONS

<b>Dimensions</b>	9.87 x 3.25 x 1.00 (m)	<b>Builder</b>	Linssen Yachts
<b>Built</b>	2009	<b>Cabins</b>	2
<b>Material</b>	Steel	<b>Berths</b>	4
<b>Engine(s)</b>	1 x Volvo Penta D2-75 diesel	<b>Hp/Kw</b>	75.00 (hp), 55.20 (kw)
<b>Asking price</b>	sold (VAT )	<b>Lying</b>	elsewhere / Not at sales office

## CONTACT

<b>Sales office</b>	De Valk Belgium	<b>Telephone</b>	+32 586 80 218
<b>Address</b>	1401 PT Nieuwpoort BE	<b>E-mail</b>	belgium@devalk.nl

## DISCLAIMER

These particulars are given in good faith as supplied but cannot be guaranteed.



# LINSSEN GRAND STURDY 33.9 AC

## GENERAL

Model	LINSSEN GRAND STURDY 33.9 AC
Type	motor yacht
LOA (m)	9,87
Beam (m)	3,25
Draft (m)	1,00
Air draft (m)	3,55
Air draft min (m)	2,40
Headroom (m)	2,00
Year built	2009
Builder	Linssen Yachts
Country	The Netherlands
Displacement (t)	8,6
CE norm	C
Hull material	steel
Hull colour	off-white
Hull shape	hard chine
Superstructure material	steel
Rubbing strake	fender rope
Deck material	steel
Deck finish	teak
Superstructure deck finish	paint
Cockpit deck finish	teak
Antifouling (year)	yes
Window frame	aluminium
Window material	tempered glass
Deckhatch	yes
Portholes	aluminium
Mast can be lowered	manual
Fuel tank (litre)	steel 240
Level indicator (fuel tank)	yes



# LINSSEN GRAND STURDY 33.9 AC

Freshwater tank (litre)	polyethylene 200
Level indicator (freshwater)	yes
Blackwater tank (litre)	polyethylene 150
Level indicator (blackwater)	yes
Blackwater tank extraction	deck extraction + pump
Wheel steering	hydraulic
Outside helm position	yes

## ACCOMMODATION

Cabins	2
Berths	4
Interior	American cherry wood
Floor	teak and holly
Aft deck	yes
Saloon	yes
Headroom saloon (m)	1,95
Heating	diesel ducted hot air Eberspacher Airtronic M D4
Chart table	yes
Aft Cabin	yes
Dinette to convert into berth	yes
Opening door to aft deck	yes
Galley	yes
Countertop	wood
Sink	stainless steel
Cooker	calor gas 2 burner
Fridge	With freezing compartment
Hot water system	220V + engine
Water pressure system	electrical
Owners cabin	French bed
Wardrobe	hanging and drawers
Bathroom	en suite



# LINSSEN GRAND STURDY 33.9 AC

Toilet	en suite
Toilet system	electric
Wash basin	at the toilet
Shower	en suite
Guest cabin 1	double bed
Wardrobe	hanging and drawers
Toilet	en suite
Toilet system	electric

## MACHINERY

No of engines	1
Make	Volvo Penta
Type	D2-75
HP	75
kW	55.20
Fuel	diesel
Year installed	2011
Engine hours	445
Engine cooling system	freshwater heat exchanger
Drive	shaft
Engine controls	bowden cable
Gearbox	hydraulic ZF
Bowthruster	+ remote control
Sternthruster	+ remote control
Exhaust	watercooled
Thrust bearing	yes
Shaft lubrication	water Hydrolubricated Linssen Yachts system
Electric bilge pump	yes
Electrical installation	12V/220V
Batteries	yes
Start battery	1x 2022



# LINSSEN GRAND STURDY 33.9 AC

Service battery	3x (2020) AGM 12V/90Ah
Battery monitor	Mastervolt
Battery charger/inverter	Mass Combi 12/2000-100

## NAVIGATION

Electric compass	Raymarine ST6002
Depth sounder/log	Raymarine ST60 Tridata
VHF	Raymarine Ray 240E
Autopilot	Raymarine ST6002
Wind vane steering install.	Raymarine ST6002
Radar	Not connected
Plotter/GPS	Raymarine Aixom 7 (2020)
AIS transceiver	Raymarine AIS 700 CLASS B (2020)
Navigation lights	yes

## EQUIPMENT

Cockpit cover	(2020)
Cockpit cushions	yes
Cockpit table	yes
Bathing platform	yes
Boarding ladder	stainless steel
Deck shower	yes
Anchor	yes
Anchor chain	yes
Windlass	manual
Capstan	yes
Sea railing	stainless steel
Grab rail (superstructure)	stainless steel
Railing side opening gates	2x
Pushpit	yes
Pulpit	yes

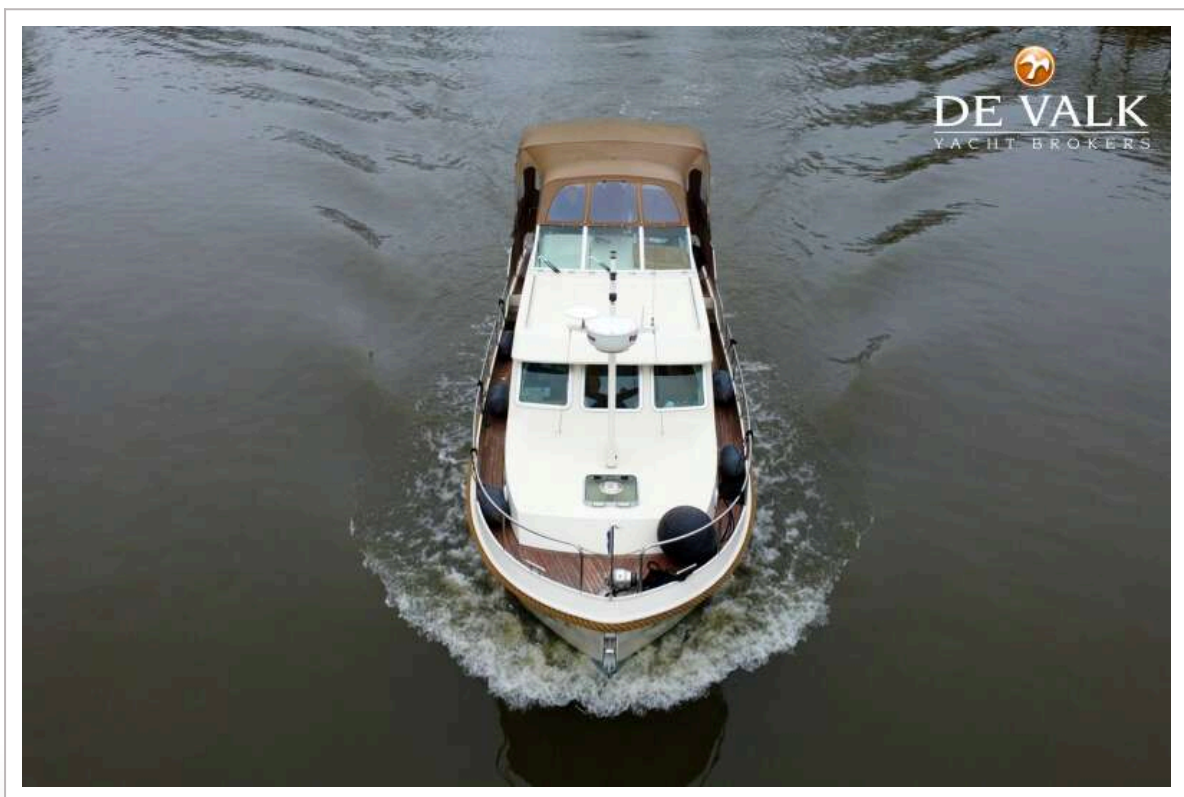


# LINSSEN GRAND STURDY 33.9 AC

Wiper	yes
Horn	yes
Fenders	yes
Mooring lines	yes
TV	yes
Radio	yes



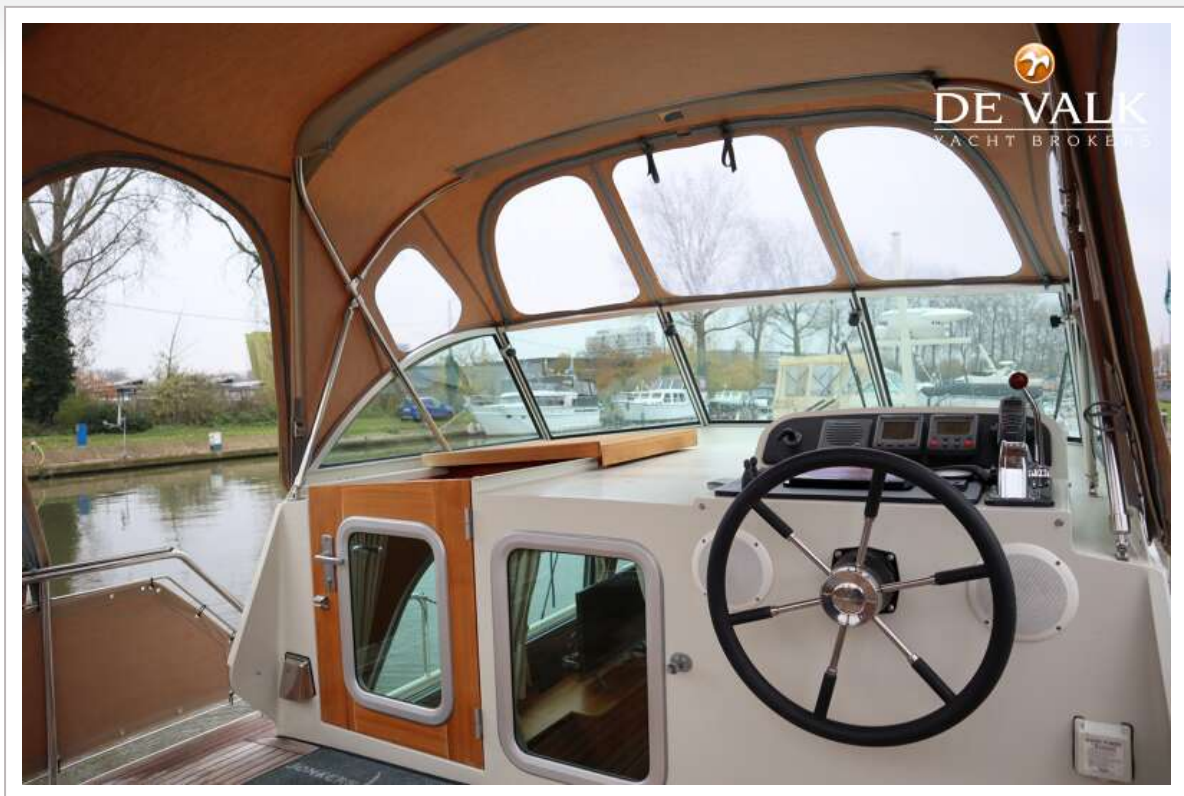
# LINSSEN GRAND STURDY 33.9 AC



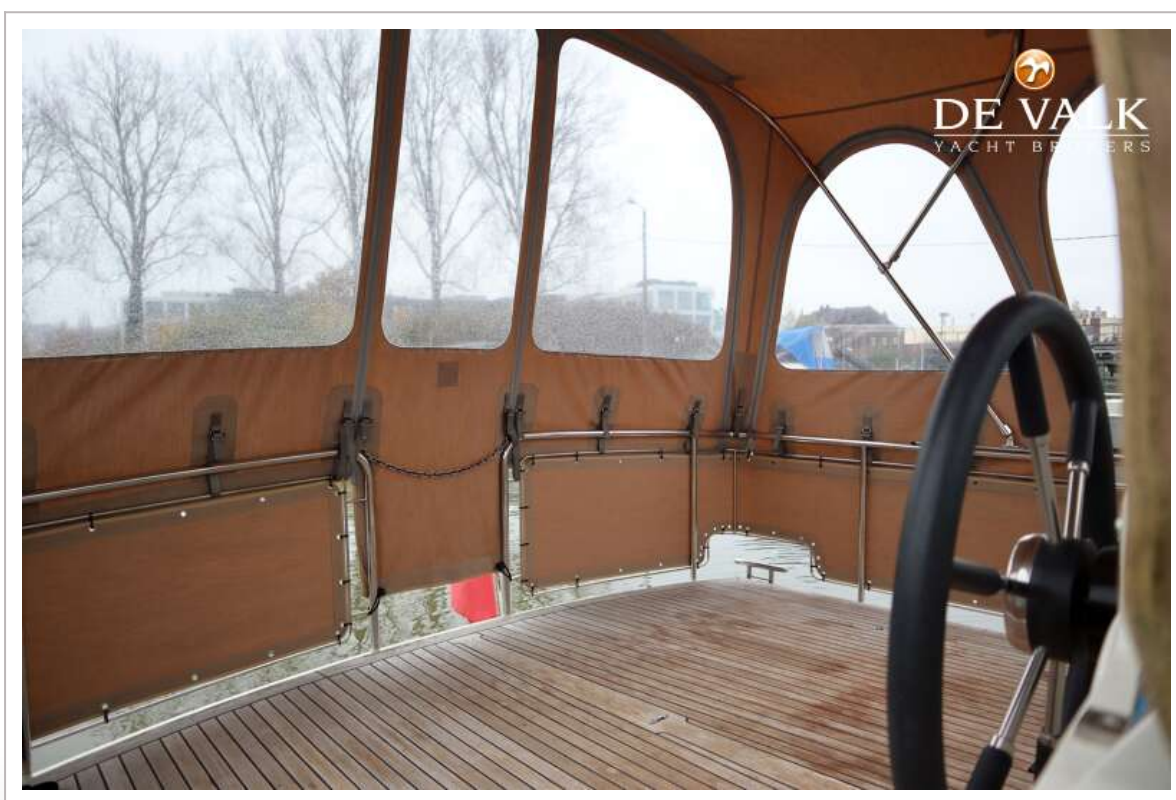
# LINSSEN GRAND STURDY 33.9 AC



# LINSSEN GRAND STURDY 33.9 AC



# LINSSEN GRAND STURDY 33.9 AC



# LINSSEN GRAND STURDY 33.9 AC



# LINSSEN GRAND STURDY 33.9 AC





# LINSSEN GRAND STURDY 33.9 AC



# LINSSEN GRAND STURDY 33.9 AC



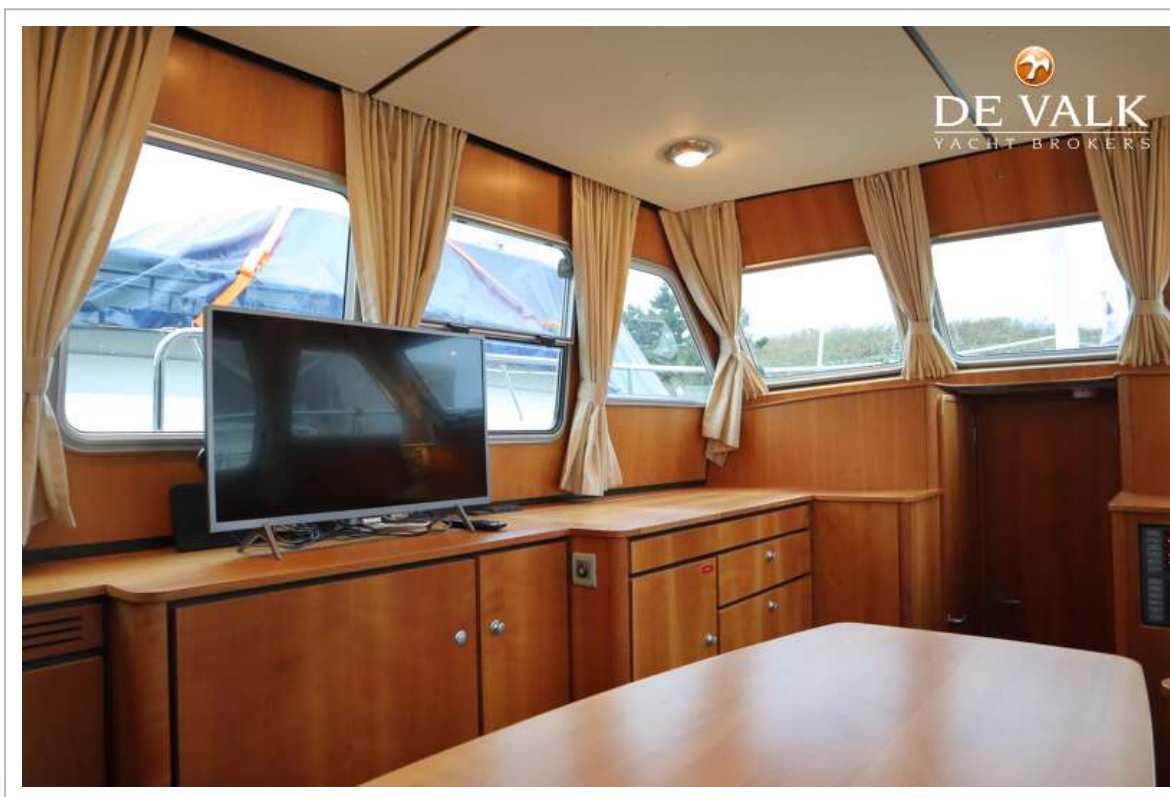
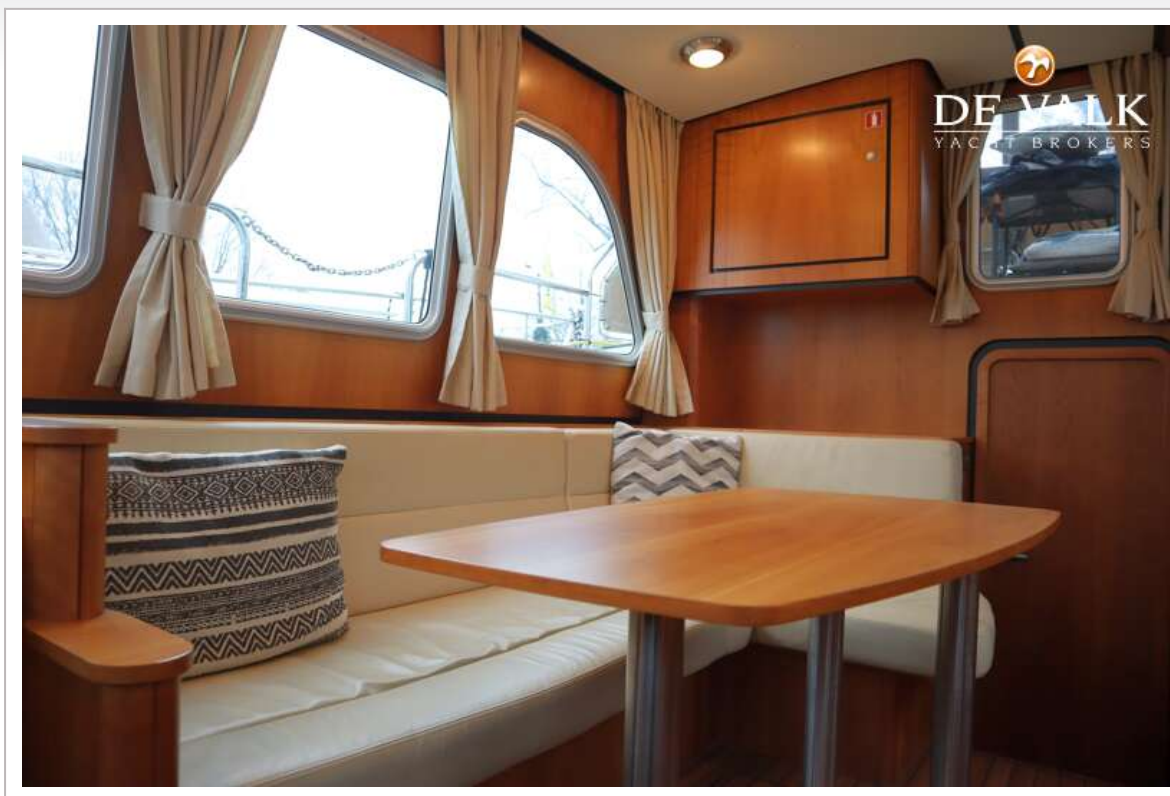
# LINSSEN GRAND STURDY 33.9 AC



# LINSSEN GRAND STURDY 33.9 AC



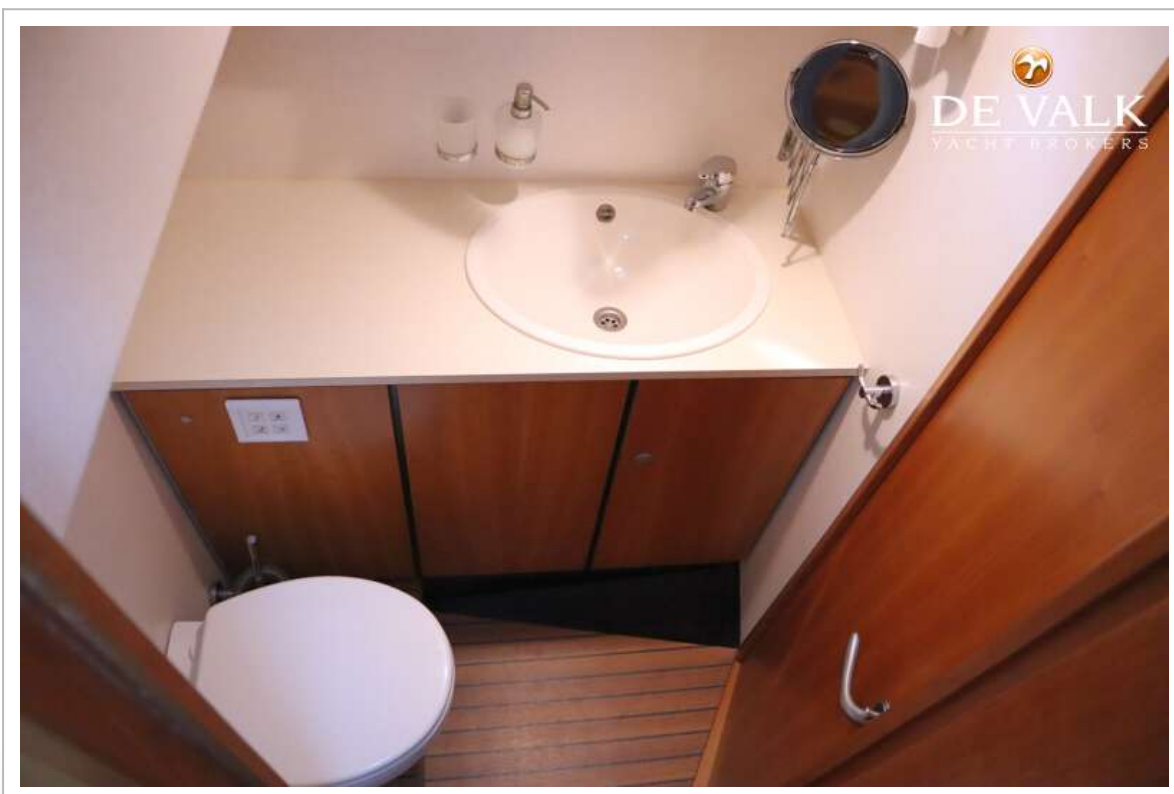
# LINSSEN GRAND STURDY 33.9 AC



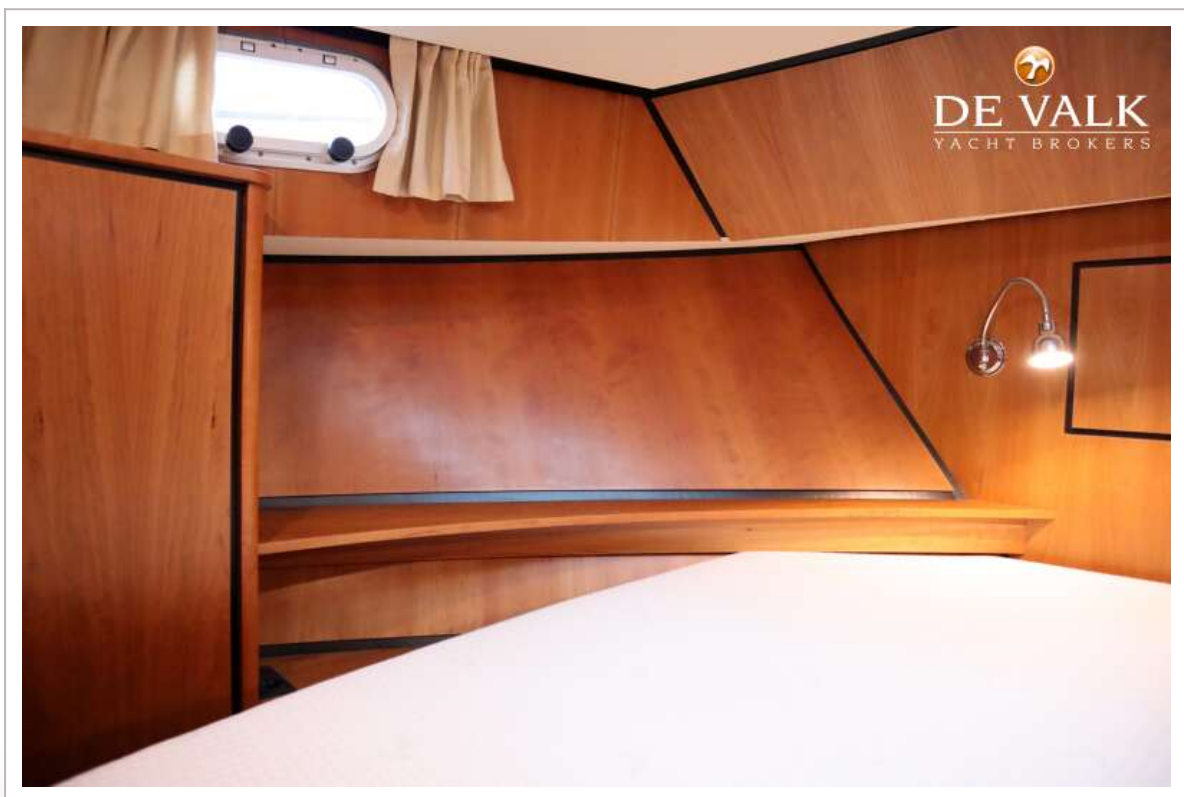
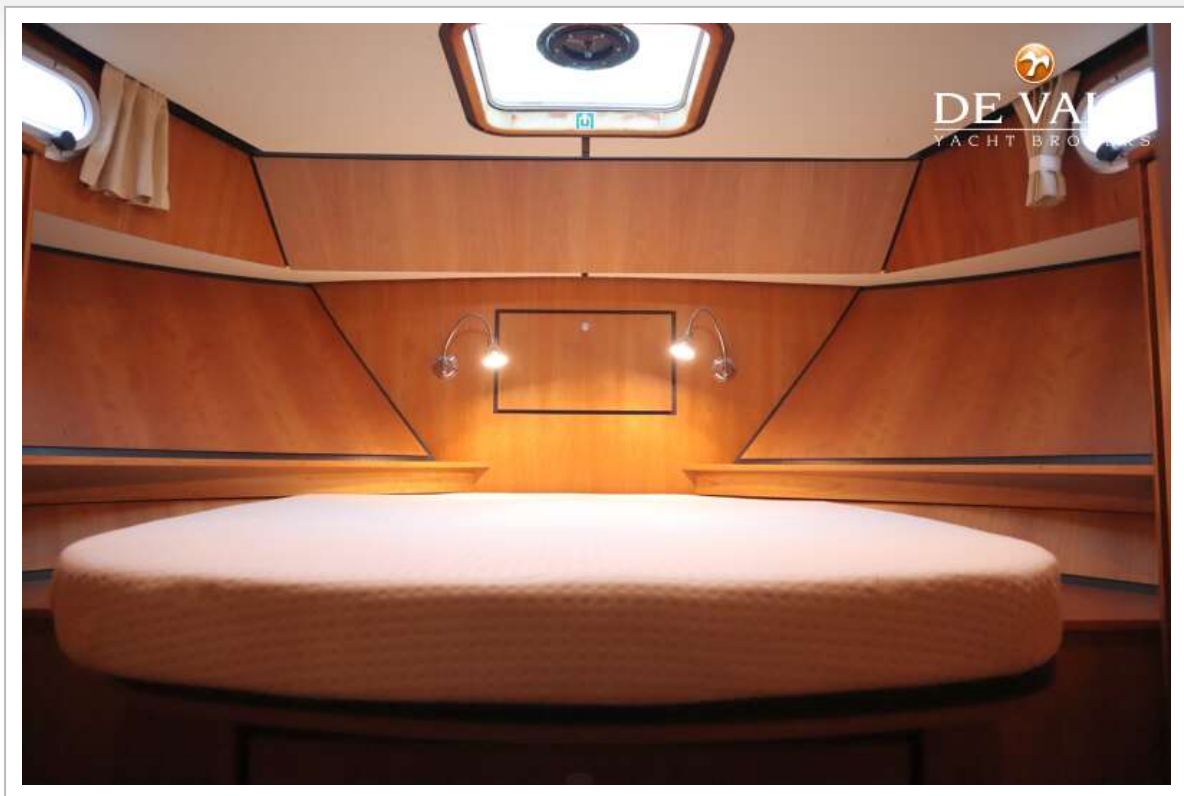
# LINSSEN GRAND STURDY 33.9 AC



# LINSSEN GRAND STURDY 33.9 AC



# LINSSEN GRAND STURDY 33.9 AC



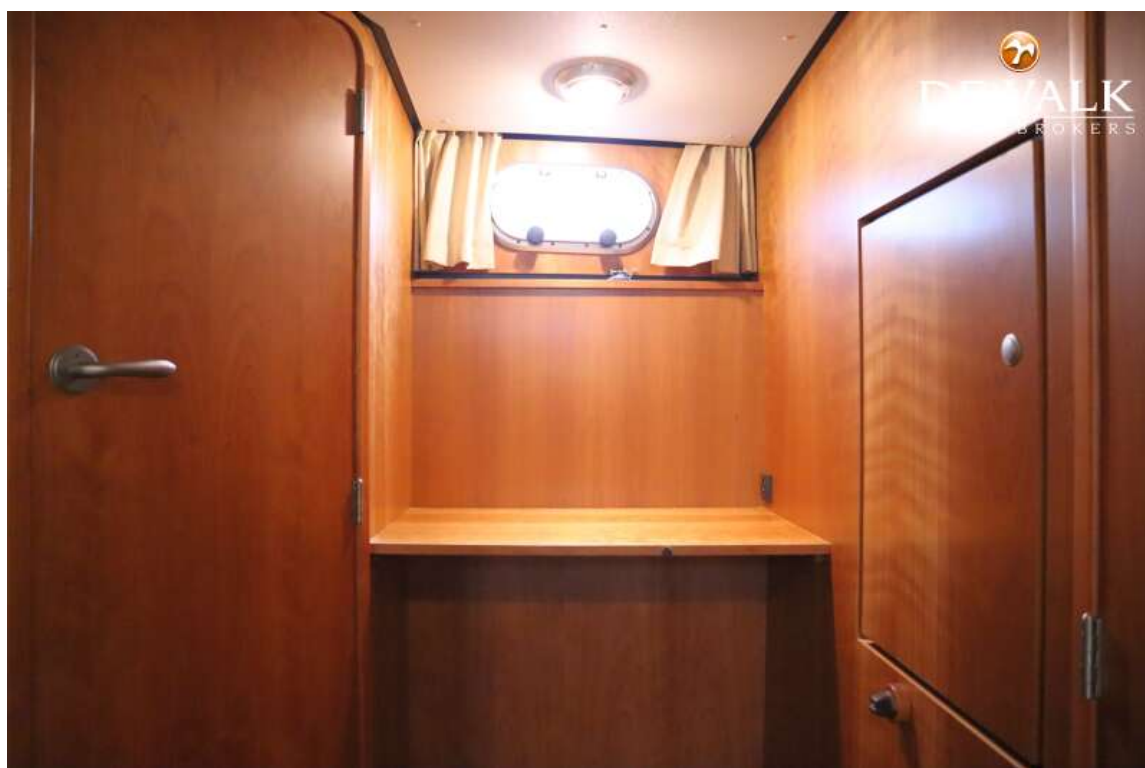
# LINSSEN GRAND STURDY 33.9 AC



# LINSSEN GRAND STURDY 33.9 AC



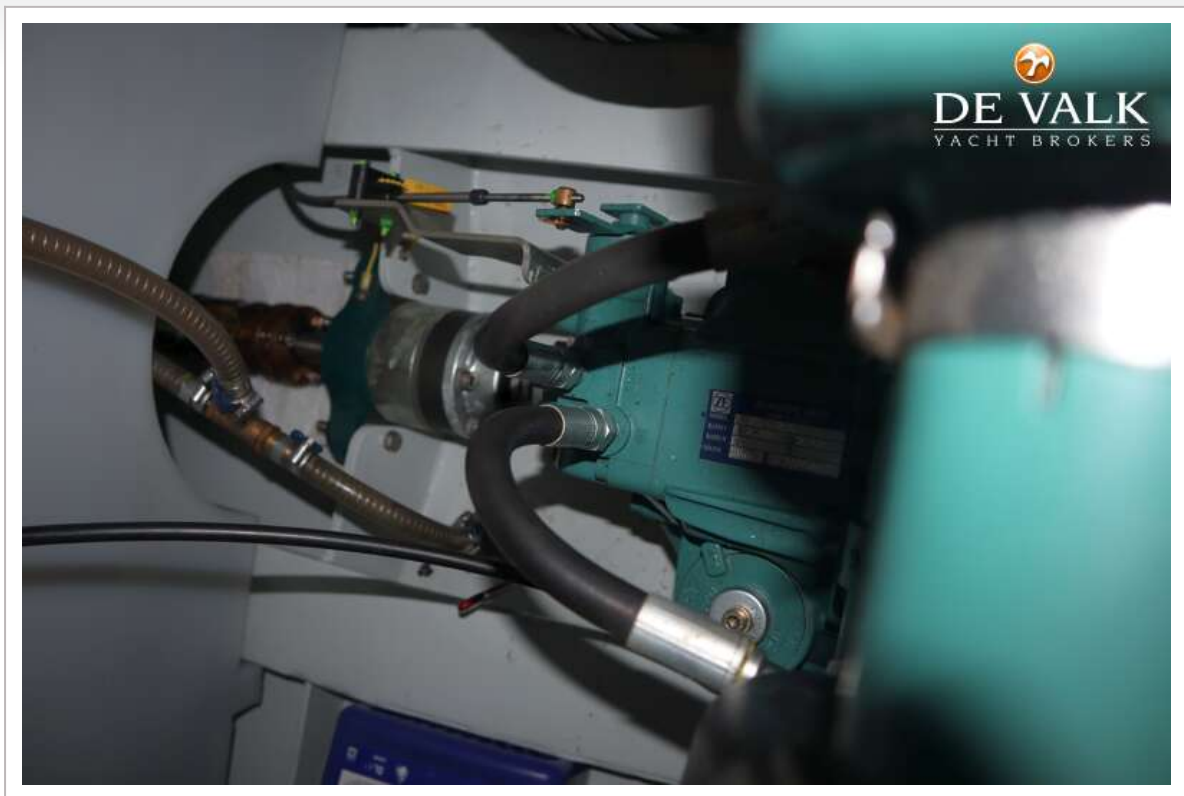
# LINSSEN GRAND STURDY 33.9 AC



# LINSSEN GRAND STURDY 33.9 AC



# LINSSEN GRAND STURDY 33.9 AC



# LINSSEN GRAND STURDY 33.9 AC

