



DE VALK  
YACHT BROKERS



VERSILCRAFT 105 PLANET



DE VALK  
YACHT BROKERS

# VERSILCRAFT 105 PLANET

## BROKER'S COMMENTS

"SUGAR", a Versilcraft planet 105 built in 2001 & refitted in 2022. Sugar has been meticulously maintained. She boasts an exquisite Nuvolari & Lenard interior. Unique details are found throughout the entire yacht. For instance, the wooden paneling provides a warm atmosphere and blown glass lamps adorn all bedrooms. Sugar's 6 bathrooms are remarkable, featuring inlaid marquetry & mother of pearl marble surfaces.

*Sofia Iliia-Salvanou*

## SPECIFICATIONS

<b>Dimensions</b>	32.50 x 6.92 x 2.25 (m)	<b>Builder</b>	New Versilcraft
<b>Built</b>	2001	<b>Cabins</b>	4
<b>Material</b>	GRP	<b>Berths</b>	9
<b>Engine(s)</b>	2 x MTU 16V2000 M90 diesel	<b>Hp/Kw</b>	2 x 1,826.00 (hp), 1,343.94 (kw)
<b>Asking price</b>	sold (VAT )	<b>Lying</b>	at sales office

## CONTACT

<b>Sales office</b>	De Valk Corfu	<b>Telephone</b>	(+30) 266 111 8095
<b>Address</b>	New Port of Corfu, near Gouvia Marina 490 83 Corfu Greece	<b>E-mail</b>	corfu@devalk.nl

## DISCLAIMER

These particulars are given in good faith as supplied but cannot be guaranteed.



# VERSILCRAFT 105 PLANET

## GENERAL

<b>Model</b>	VERSILCRAFT 105 PLANET
<b>Type</b>	motor yacht
<b>LOA (m)</b>	32,50
<b>LWL (m)</b>	31,50
<b>Beam (m)</b>	6,92
<b>Draft (m)</b>	2,25
<b>Year built</b>	2001
<b>Launched</b>	2001
<b>Builder</b>	New Versilcraft
<b>Country</b>	Italy
<b>Designer</b>	CLM Engineering
<b>Gross tonnage</b>	167,95
<b>Net tonnage</b>	89,31
<b>Hull material</b>	GRP
<b>Hull colour</b>	blue White and
<b>Hull shape</b>	Planing
<b>Superstructure material</b>	GRP
<b>Deck material</b>	GRP
<b>Deck finish</b>	teak
<b>Superstructure deck finish</b>	teak
<b>Window frame</b>	Inox
<b>Window material</b>	tempered glass
<b>Deckhatch</b>	yes
<b>Portholes</b>	yes
<b>Insulation</b>	yes
<b>Flybridge</b>	yes
<b>Flybridge suncover</b>	yes
<b>Radar arch</b>	yes
<b>Fuel tank (litre)</b>	14200
<b>Fuel daytank (litre)</b>	1500



# VERSILCRAFT 105 PLANET

Freshwater tank (litre)	3600
Blackwater tank (litre)	600
Greywater tank (litre)	400
Wheel steering	Electric and Hydraulic
Flybridge helm position	yes
Extra info	REFIT 2021
Extra info	6 baths with inlaid marquetry & mother of pearl marble surfaces
Extra info	All armchairs refurbished in 2022 with soft NAPA leather.

## ACCOMMODATION

Cabins	4
Berths	9
Crew cabin	X2
Crew berths	5
Layout	yes
Floor	parquet
Aft deck	yes
Saloon	yes
Air-conditioning	With 3 compressors
Navigation center	yes
Dining room	8 seats
Galley	yes
Countertop	yes
Sink	yes
Cooker	X 4 burners stove top
Oven	X 2
Extractor	yes
Gas alarm	yes
Fridge	X 2
Freezer	yes
Hot water system	yes



# VERSILCRAFT 105 PLANET

Water pressure system	electrical
Dishwasher	yes
Ice maker	yes
Coffee maker	yes
Crockery	yes
Owners cabin	double bed
Bed length (m)	King sized bed
Wardrobe	hanging/drawers/shelves
Bathroom	en suite Separate His and Hers marble bathrooms
Toilet	en suite
Toilet system	electric
Wash basin	in the bathroom
Shower	en suite
Jacuzzi	On the flybridge
Guest cabin 1	double bed VIP cabin
Bed length (m)	Queen bed
Wardrobe	Multiple closets
Bathroom	en suite Marble
Toilet	en suite
Toilet system	electric
Wash basin	in the bathroom
Shower	en suite
Guest cabin 2	twin single
Wardrobe	yes
Bathroom	en suite Marble
Toilet	en suite
Toilet system	electric
Wash basin	in the bathroom
Shower	en suite
Guest cabin 3	3 twin beds
Wardrobe	yes
Bathroom	Marble



# VERSILCRAFT 105 PLANET

Toilet	en suite
Toilet system	electric
Wash basin	in the bathroom
Shower	en suite
Crew cabin(s)	X 2 cabins, 5 beds
Bathroom (crew)	X 2
Toilet (crew)	yes
Toilet system	electric
Wash basin	in the bathroom
Washing machine	yes
Dryer	yes
Flybridge	Accessible via two sets of stairs, interior and exterior
Extra info	5 seat breakfast area, furnished in napa leather.
Extra info	Blown glass lamps in bedrooms

## MACHINERY

No of engines	2
Make	MTU
Type	16V2000 M90
HP	1826
kW	1343.94
Fuel	diesel
Year installed	2000
Maximum speed (kn)	24
Cruising speed (kn)	20
Consumption (l/hr)	200
Range (nm)	850
Engine hours	2800
Drive	shaft
Shaft seal	yes
Engine controls	MTU



# VERSILCRAFT 105 PLANET

<b>Gearbox</b>	MTU
<b>Bowthruster</b>	hydraulic
<b>Sternthruster</b>	hydraulic
<b>Gearbox</b>	MTU
<b>Exhaust</b>	MTU
<b>Propeller type</b>	fixed
<b>Propeller shaft material</b>	stainless steel
<b>Electric bilge pump</b>	yes
<b>Electrical installation</b>	12,24,230,380V
<b>Generator</b>	Kohler 50Kh
<b>Running hours generator</b>	12000 starboard
<b>Generator 2</b>	Kohler 50 Kh
<b>Running hours generator 2</b>	12000 port side
<b>Batteries</b>	yes
<b>Start battery</b>	yes
<b>Service battery</b>	yes
<b>Navigation Battery</b>	yes
<b>Generator battery</b>	yes
<b>Bowthruster battery</b>	yes
<b>Sternthruster battery</b>	yes
<b>Windlass battery</b>	yes
<b>Battery monitor</b>	yes
<b>Battery charger</b>	yes
<b>Battery charger/inverter</b>	yes
<b>Shorepower</b>	with cable
<b>Watermaker</b>	X2 Isomar 300 Lt/h
<b>Stabilizers</b>	fin
<b>Extra info</b>	5 Under water lights at the stern
<b>Extra info</b>	Engine room ventilation: 4 Enhausters & 2 Blowers

## NAVIGATION



# VERSILCRAFT 105 PLANET

Compass	X 2 Magnetic, Gyro compass X 2
Compass on flybridge	yes
Depth sounder	yes
Depth sounder/log	yes
Windset	yes
VHF	yes
VHF handheld	yes
Autopilot	Raymarine
Radar	yes
GPS	yes
Plotter	yes
Radar/GPS/plotter	yes
Navtex	yes
Electronic chart(s)	yes
AIS transceiver	yes
EPIRB	yes
Camera	5 security cameras
Navigation lights	yes
Searchlight	yes
Extra info	INTERCOM-Talk back
Extra info	Telephone system, Guest phones, internal ship's communication

## EQUIPMENT

Sun awning	yes
Window cover	yes
Cockpit cushions	yes
Bathing platform	yes
Boarding ladder	And side boarding ladder
Transom door	yes
Gangway	6 m
Anchor	yes





# VERSILCRAFT 105 PLANET

<b>Anchor chain</b>	150 m
<b>Anchor 2</b>	yes
<b>Anchor chain</b>	150 m
<b>Windlass</b>	X2
<b>Capstan</b>	Warping capstans
<b>Dinghy</b>	yes
<b>Outboard</b>	yes
<b>Deck crane</b>	1 crane in the garage
<b>Life raft</b>	yes
<b>Lifejackets</b>	yes
<b>Horn</b>	yes
<b>Fenders</b>	yes
<b>Mooring lines</b>	yes
<b>Tools</b>	yes
<b>TV</b>	1 large hidden television in living room + 2 more in cabins
<b>Radio-cd player</b>	yes
<b>DVD player</b>	yes
<b>Surround Sound System</b>	Denon
<b>Clock - barometer</b>	yes
<b>Fire extinguisher</b>	yes
<b>Auto extinguisher system</b>	yes
<b>Extra info</b>	CCTV, monitors, motion sensors
<b>Extra info</b>	Smoke detection, fire alarms sound & light
<b>Extra info</b>	Medical equipment, Dive board, Toys: x 2 SUP, X1 SEABOB , W Bard



# VERSILCRAFT 105 PLANET



# VERSILCRAFT 105 PLANET



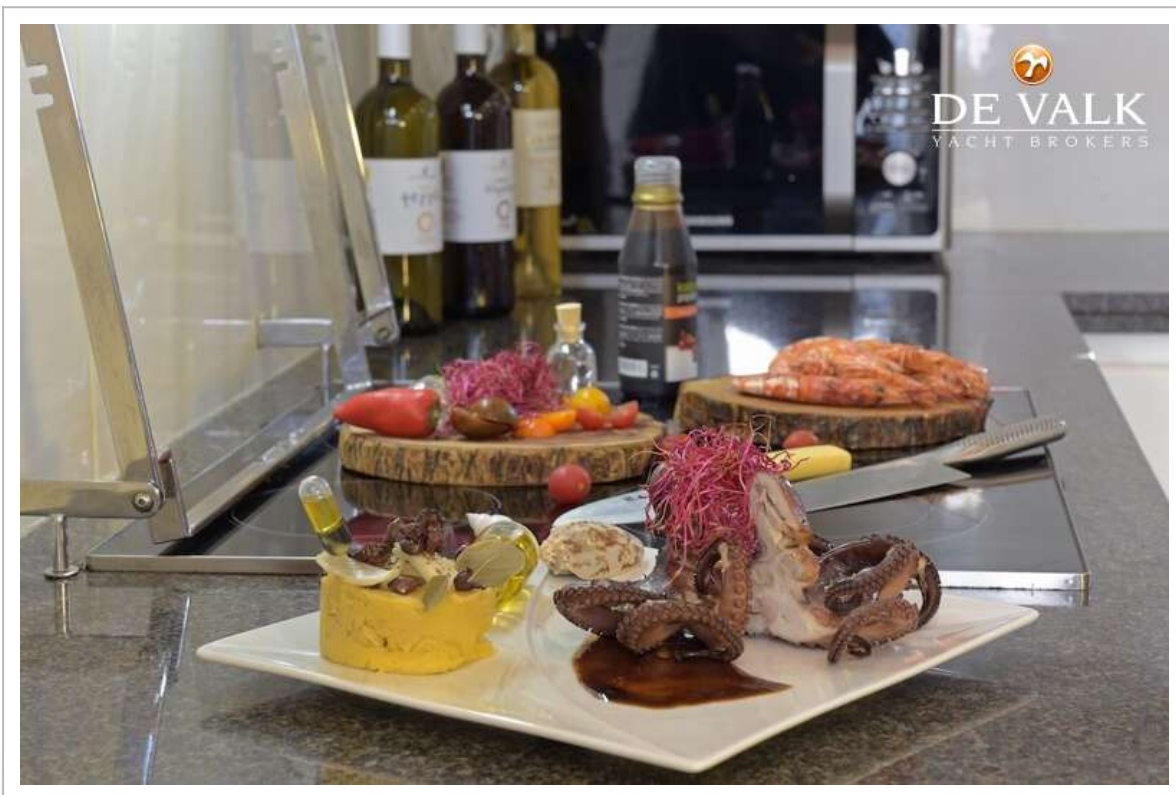
# VERSILCRAFT 105 PLANET



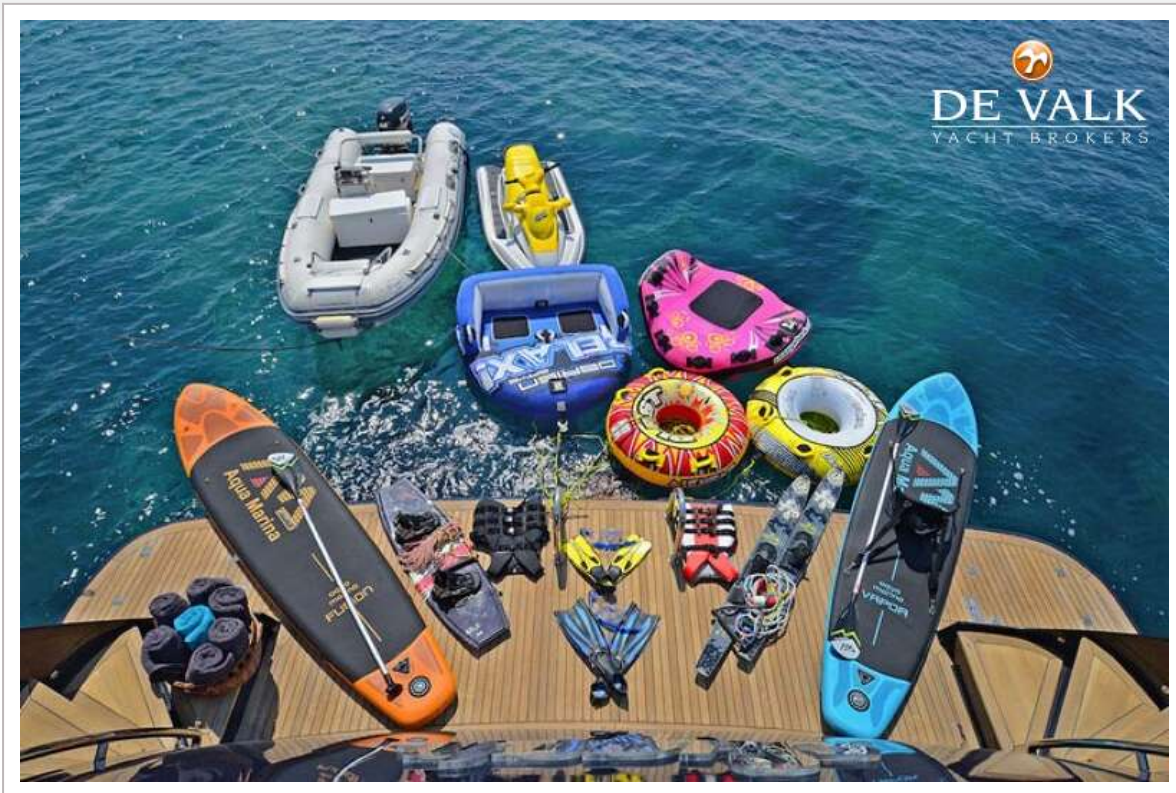
# VERSILCRAFT 105 PLANET



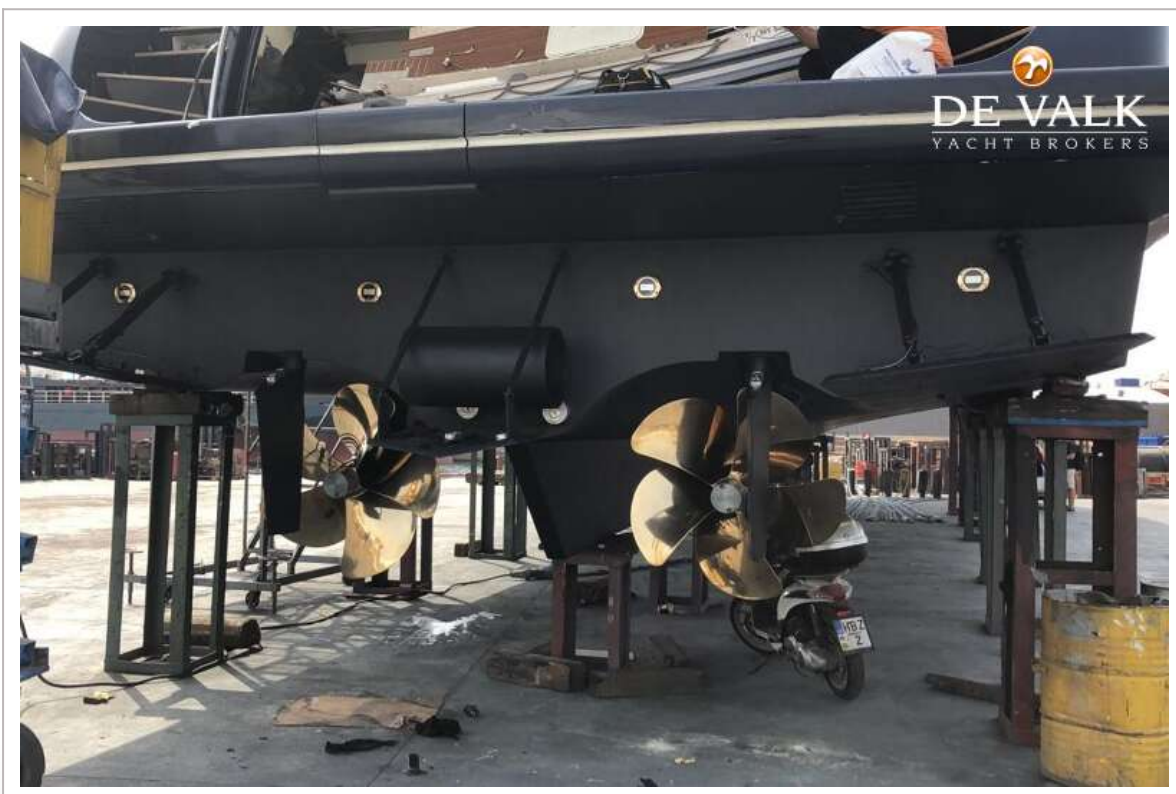
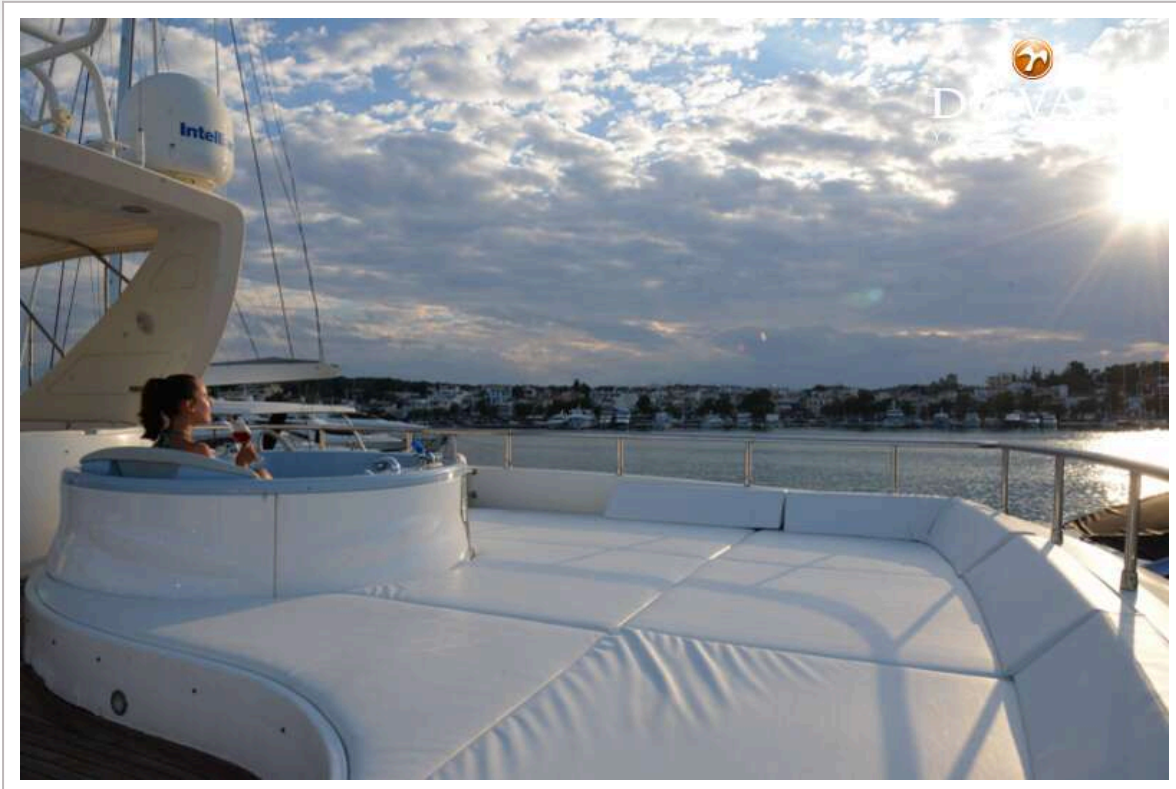
# VERSILCRAFT 105 PLANET



# VERSILCRAFT 105 PLANET

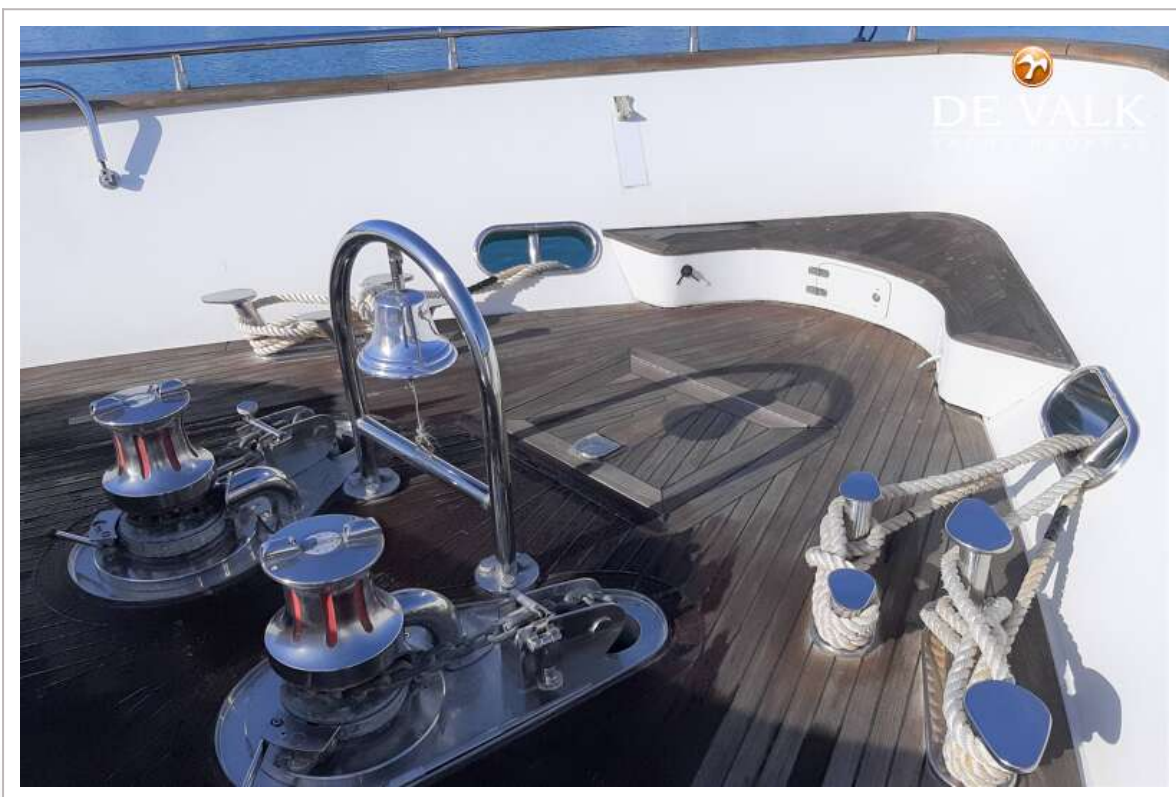
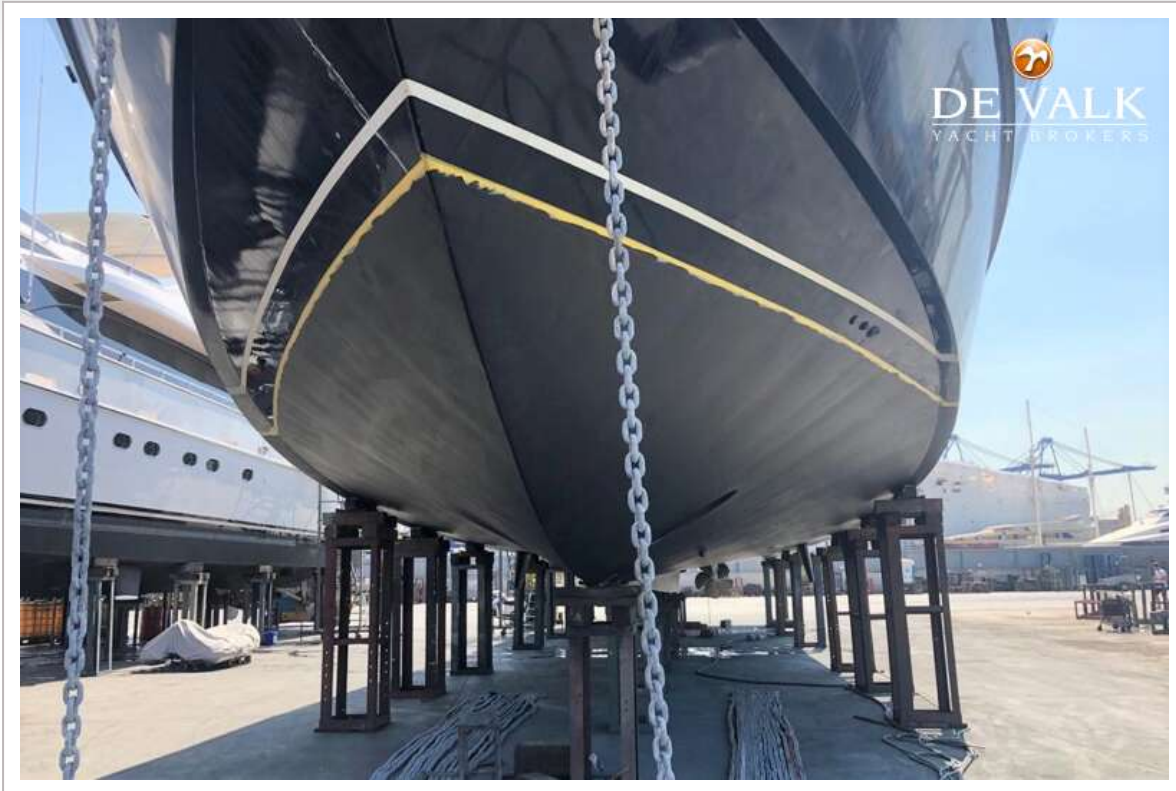


# VERSILCRAFT 105 PLANET

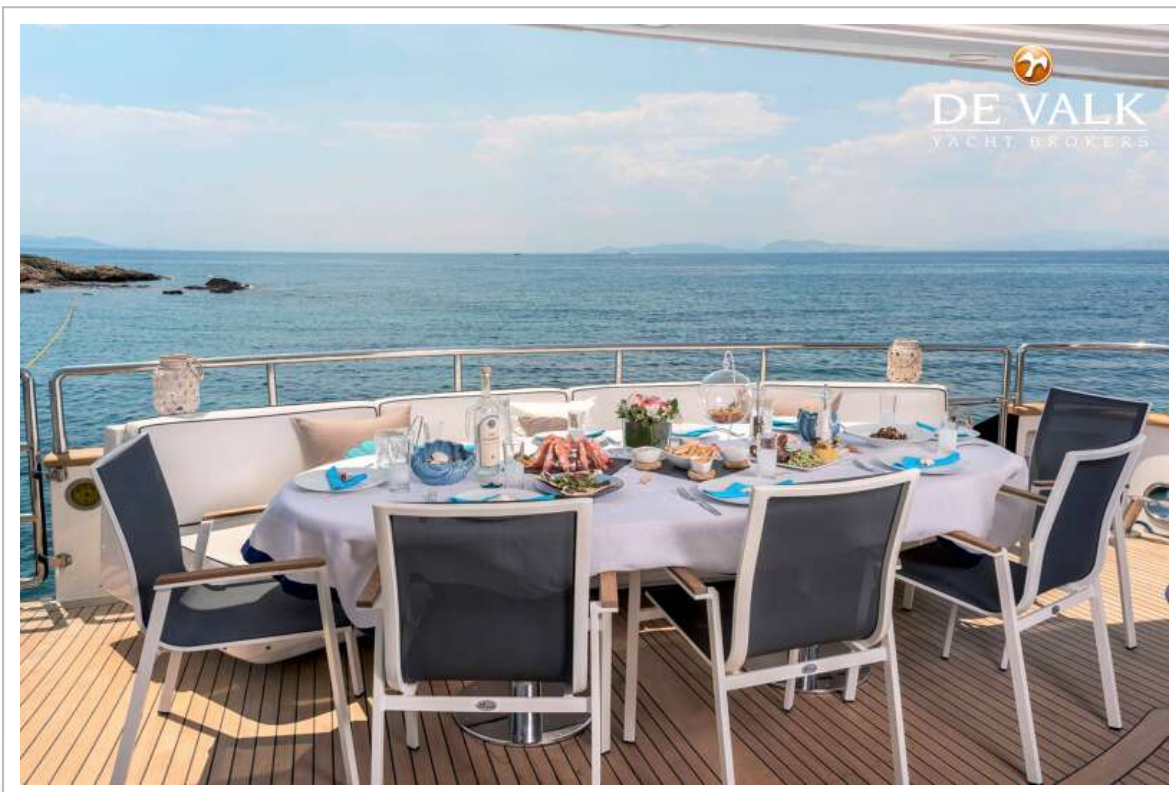




# VERSILCRAFT 105 PLANET



# VERSILCRAFT 105 PLANET



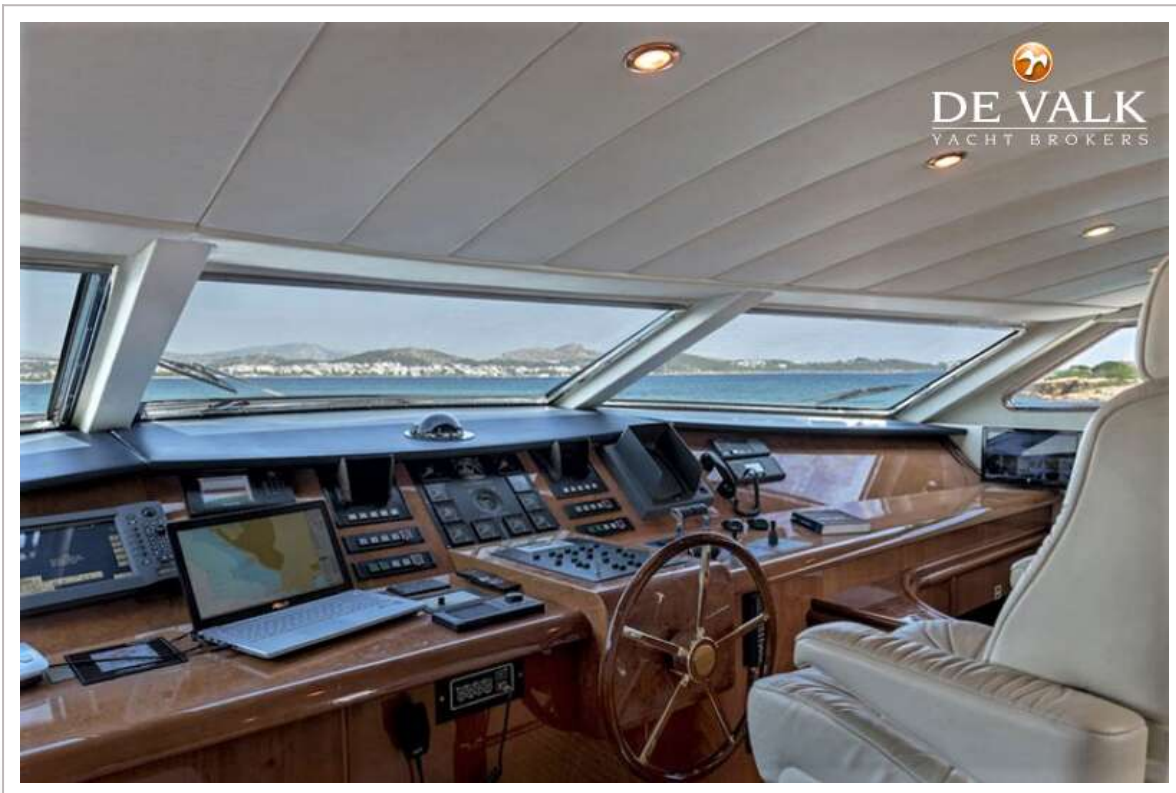
# VERSILCRAFT 105 PLANET



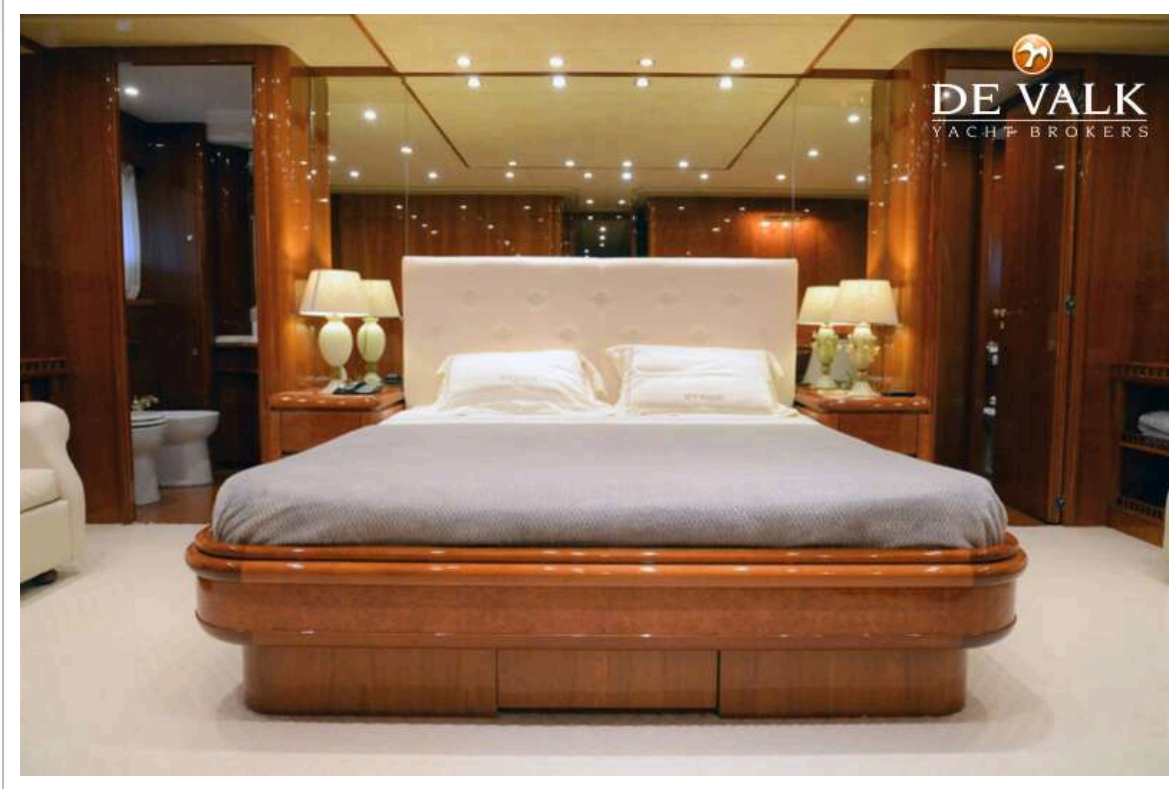
# VERSILCRAFT 105 PLANET



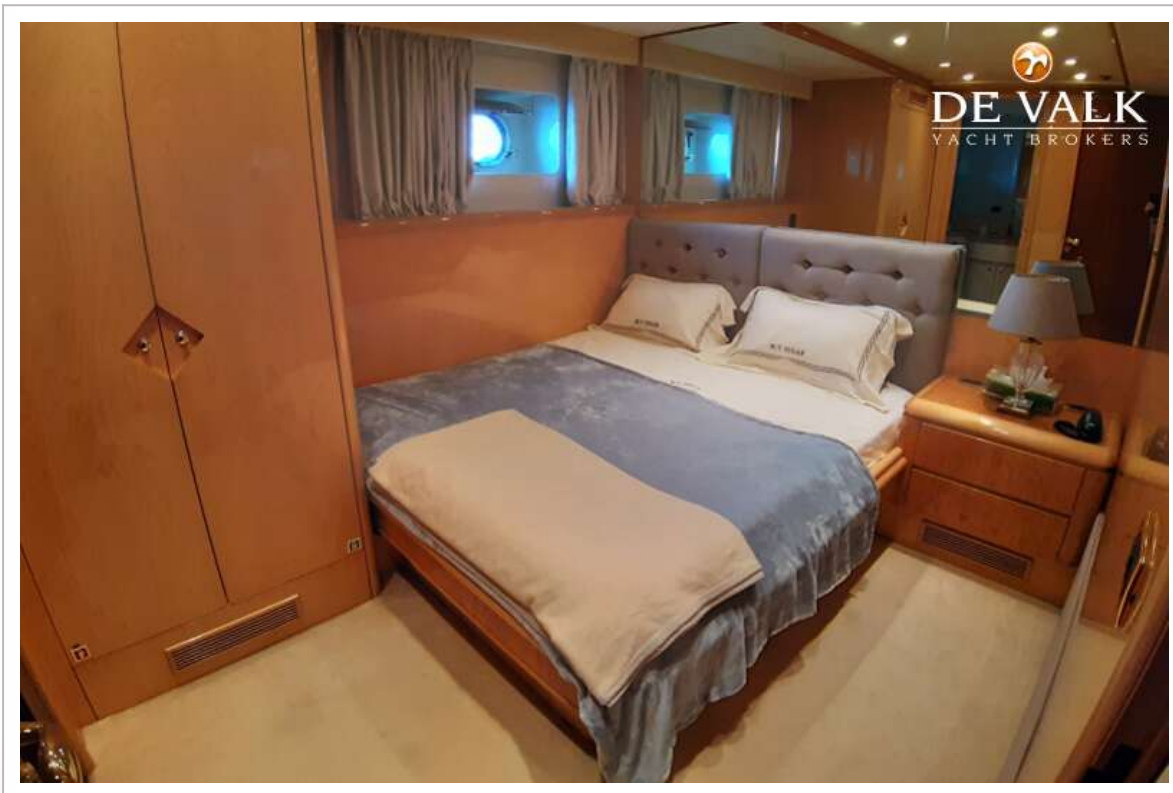
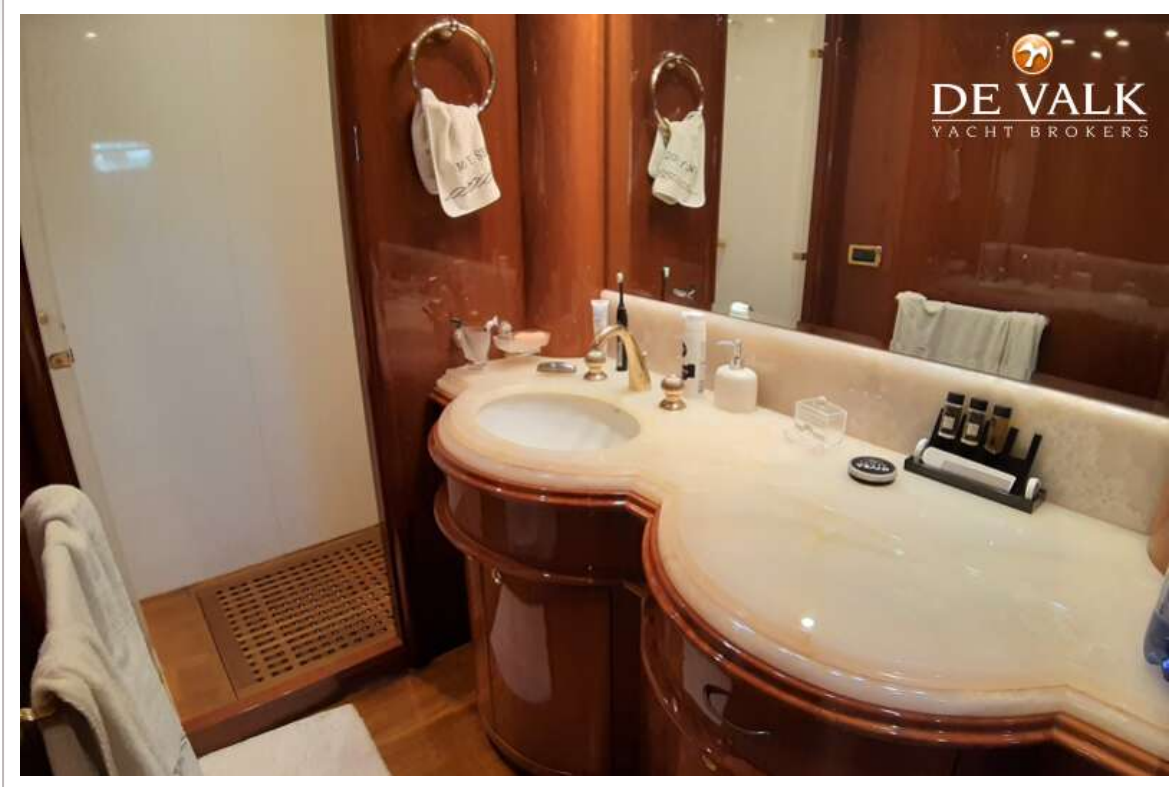
# VERSILCRAFT 105 PLANET



# VERSILCRAFT 105 PLANET



# VERSILCRAFT 105 PLANET



# VERSILCRAFT 105 PLANET

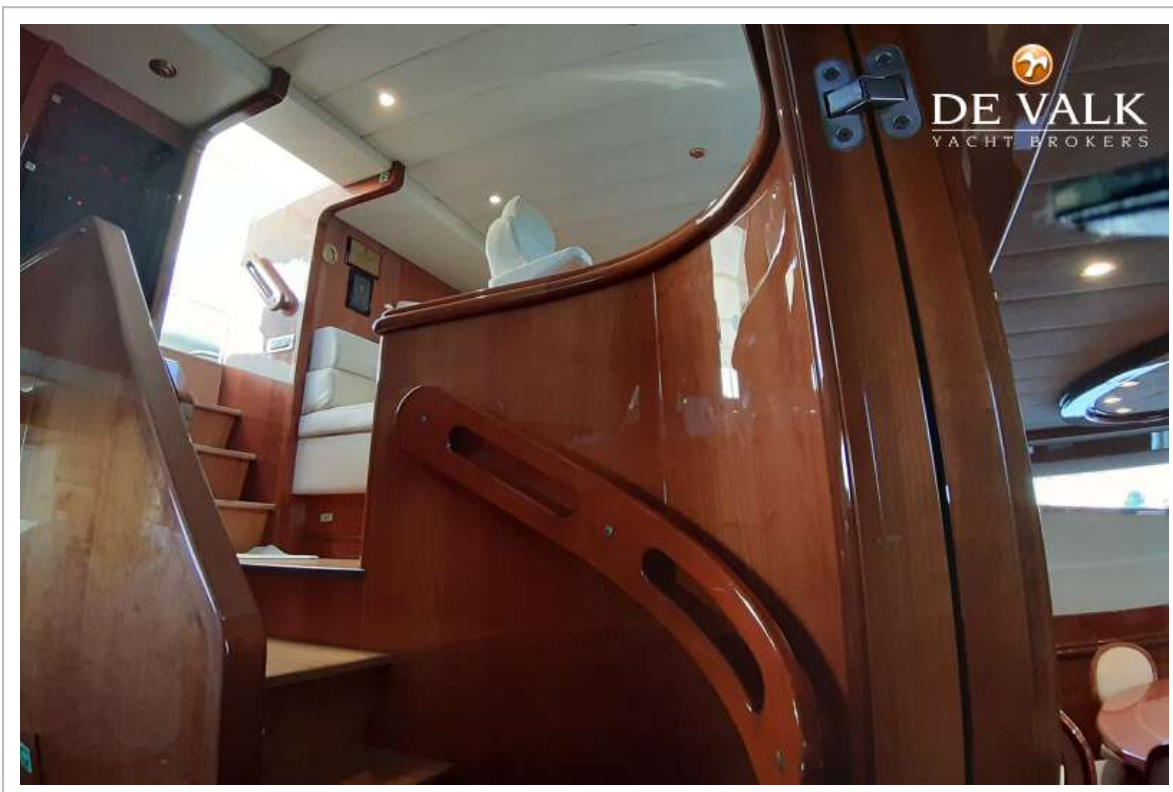




# VERSILCRAFT 105 PLANET



# VERSILCRAFT 105 PLANET



# VERSILCRAFT 105 PLANET



# VERSILCRAFT 105 PLANET

