



DE VALK
YACHT BROKERS



AMEL SUPER MARAMU 2000



DE VALK
YACHT BROKERS

AMEL SUPER MARAMU 2000

BROKER'S COMMENTS

The Amel Super Maramu 2000 is a very safe and easy to use sailing yacht, especially for big trips and long stays on board. Maneuvering on the engine is also excellent, due to the directional rotating propeller that is just behind the keel and the retractable bow thruster. Very characteristic of the Maramu is the ketch rigging, which has the great advantage that you can reef in smaller steps and have fewer large sails to handle. The yacht is always used by the first owner, and she is in Penang / Malaysia for the next owner who wants to sail in these beautiful areas.

Ger Bayens

SPECIFICATIONS

Dimensions	15.97 x 4.60 x 2.10 (m)	Builder	Chantiers Amel
Built	2005	Cabins	2
Material	GRP	Berths	6
Engine(s)	1 x Yanmar 4JH3-TE diesel	Hp/Kw	101.00 (hp), 74.34 (kw)
Asking price	sold (VAT)	Lying	elsewhere / Not at sales office

CONTACT

Sales office	De Valk Thuishaven	Telephone	+31 35 5829042
Address	Marinaweg 8 (postal address) 1361 AC Almere NL	E-mail	thuishaven@devalk.nl

DISCLAIMER

These particulars are given in good faith as supplied but cannot be guaranteed.



AMEL SUPER MARAMU 2000

GENERAL

Model	AMEL SUPER MARAMU 2000
Type	sailing yacht
LOA (m)	15,97
LWL (m)	12,60
Beam (m)	4,60
Draft (m)	2,10
Year built	2005
Launched	2005
Builder	Chantiers Amel
Country	France
Designer	Henry Amel & J. Carreau
Displacement (t)	16
Ballast (tonnes)	cast iron 5,5
CE norm	A
Hull material	GRP
Hull colour	white
Hull shape	round-bilged
Keel type	fin keel with bulb
Superstructure material	GRP
Rubbing strake	plastic
Deck material	GRP
Deck finish	synthetic teak
Superstructure deck finish	non-skid moulded in
Cockpit deck finish	synthetic teak
Window frame	stainless steel
Window material	polycarbonate
Deckhatch	yes
Portholes	aluminium
Fuel tank (litre)	600
Freshwater tank (litre)	GRP 1000



AMEL SUPER MARAMU 2000

Level indicator (freshwater)	yes
Blackwater tank (litre)	GRP 2x 60
Blackwater tank extraction	deck extraction + uw line
Wheel steering	cable steering
More info on hull	needs new antifouling & anodes and a new fixed fender on the stern
Extra info	yes
Extra info	The vessel is since 2005 from a Dutch owner and has a Dutch ICP Registration

ACCOMMODATION

Cabins	2
Berths	6
Interior	mahogany
Floor	teak and holly
Aft deck	yes
Doghouse	yes
Saloon	yes
Headroom saloon (m)	2,07
Heating	diesel ducted hot air Eberspacher Air Top
Air-conditioning	2x 1 Climma refit 2021, 2 Mabru aircon Heat and Cool, 1 Webasto
Navigation center	yes
Chart table	yes
Aft Cabin	yes
Dinette	with large U-shaped dinette with pull-out cage
Convertible berth	above the starboard sitting-place in the saloon
Galley	yes
Countertop	plastic
Sink	emaille
Cooker	calor gas ENO stainless steel, 4 Pits + electronic spark
Oven	ENO stainless steel



AMEL SUPER MARAMU 2000

Microwave/oven combi	Samsung MW83Y (2016)
Fridge	yes
Freezer	yes
Hot water system	220V + engine
Water pressure system	electrical
Owners cabin	double bed
Bed length (m)	2,30 x 2,80
Wardrobe	hanging/drawers/shelves
Bathroom	en suite
Toilet	en suite
Toilet system	electric
Wash basin	in the bathroom
Shower	en suite
Guest cabin 1	v-bed 2x 2,10 x 0,70
Wardrobe	hanging/drawers/shelves
Bathroom	en suite
Toilet	en suite
Toilet system	electric
Wash basin	in the bathroom
Shower	en suite
Washing machine	Electrolux 6KG (2016)
Extra info	The interior wood looks very good, the carpet in the storage cabinets is not neat anymore
Extra info	The cushions in the front and aft cabin are no longer present.

MACHINERY

No of engines	1
Make	Yanmar
Type	4JH3-TE
HP	101
kW	74.34



AMEL SUPER MARAMU 2000

Fuel	diesel
Maximum speed (kn)	8
Cruising speed (kn)	7
Engine hours	4400
Engine cooling system	freshwater heat exchanger
Drive	shaft
Shaft seal	yes
Engine controls	bowden cable
Gearbox	yes
Bowthruster	electric Needs a new propeller
Exhaust	watercooled
Propeller type	feathering
Propeller blades	3
Propeller shaft material	Amel Transmission (U Drive)
Shaft lubrication	oilbath
Manual bilge pump	2020
Electric bilge pump	2020
Electrical installation	12/24/230V
Generator	silent separator ONA 6 KVA 220V refitted in 2020
Running hours generator	7700
Batteries	8
Start battery	(2022)
Service battery	6 X 120 Ah in 12V = 360 in 24V (old / bad batteries)
Generator battery	yes
Battery charger	2x 80 Ah + 30 Ah Extra possibility 115 Volt 60Hz battery charge
Inverter	Mastervolt 24/220 V - 2300W
Solar panel	2x 24V / 2010
Shorepower	yes
Watermaker	the filters need maintenance Dessalator duo water maker 220 V/ 24 V 60 l/h
Extra info	The main engine and generator were extensively serviced in March 2023



Extra info

Extra Alternator 100 Ah 24 V

Extra info

the engine room needs to be cleaned

NAVIGATION

Compass

Plastimo

Electric compass

in auto pilot Raymarine

Depth sounder/log

Raymarine (2017)

Windset

Raymarine (2017)

VHF

Furuno

Autopilot

Raymarine SG3 (2014)

Radar

Furuno

GPS

Raymarine

Plotter

to be checked Raymarine Axiom

AIS transceiver

Amec class 2 with own GPS (2014)

EPIRB

to be checked 406 M (2005 battery)

Navigation lights

yes

EQUIPMENT

Fixed windscreen

yes

Fixed hardtop

yes

Bimini

yes

Sun awning

2021

Cockpit cushions

8x

Cockpit table

yes

Bathing platform

yes

Boarding ladder

stainless steel

Gangway

yes

Deck shower

yes

Anchor

Rocna Stainless steel

Anchor chain

yes

Chain counter

2014



AMEL SUPER MARAMU 2000

Windlass	electrical
Deck wash	yes
Dinghy	2,6m in Hypalon
Outboard	needs to be serviced Yamaha 4hp
Outboard support	yes
Sea railing	stainless steel
Grab rail (superstructure)	stainless steel
Railing side opening gates	yes
Pushpit	yes
Pulpit	yes
Life raft (pers)	container 4
Last life raft survey	needs survey
Lifebuoy	yes
Fenders	yes
Mooring lines	yes
TV	yes
Satellite	yes
Radio-cd player	yes
Cockpit speakers	yes
Speakers in salon	yes
Fire extinguisher	to be checked
Latest extinguisher survey	unknown

RIGGING

Rigging	ketch
Standing rigging	wire
Brand mast	yes
Material mast	aluminium coated Coating on the mast in good condition
Spreaders	2 sets
Mainsail	Stowaway
Stoway mast	yes

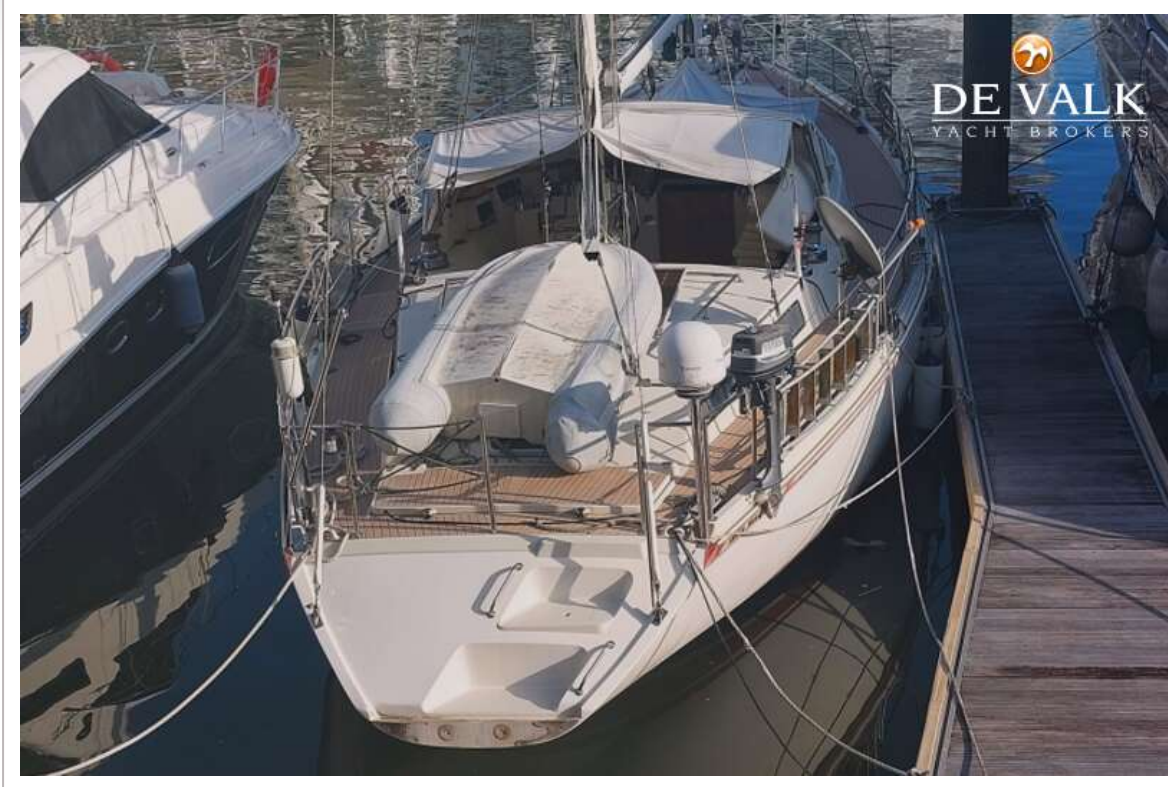


AMEL SUPER MARAMU 2000

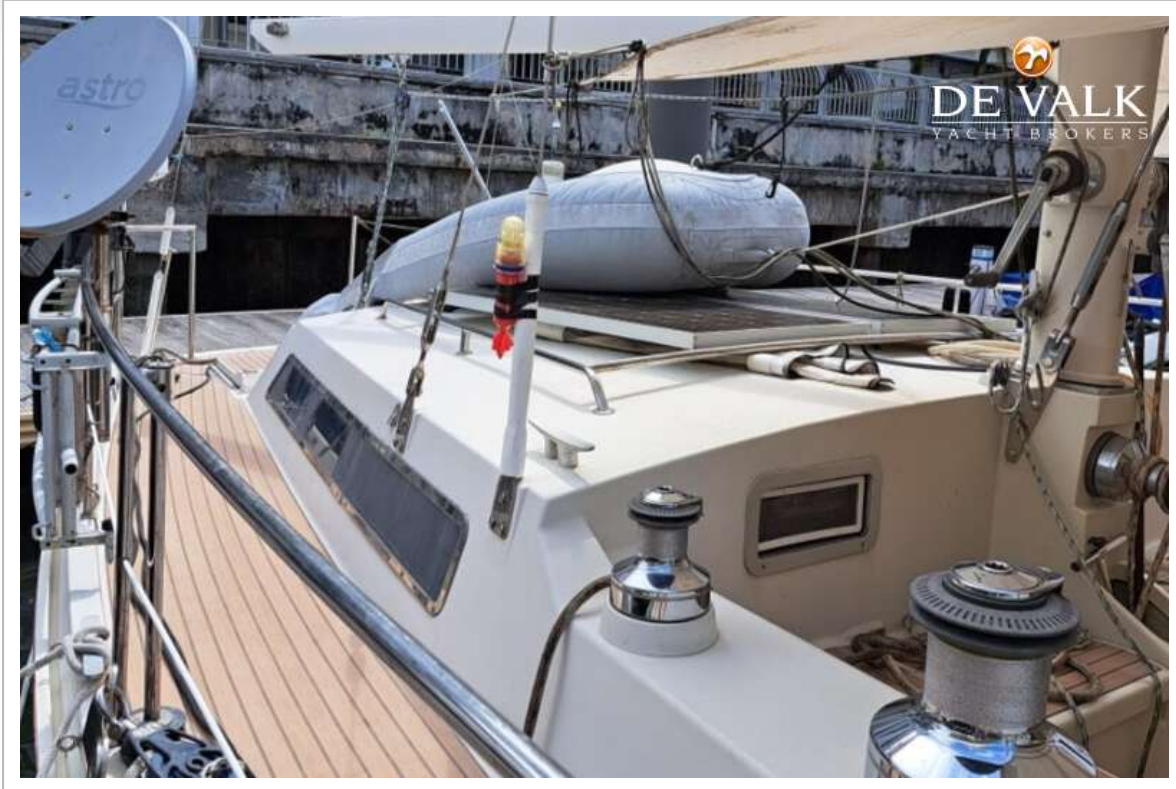
Mizzen	Stowaway
Genoa II	yes
Genoa furler	yes
Reefing System	main in-mast furling
Boomvang	mechanical and tackle
Primary sheet winch	2x Lewmar ST Electr
Secondary sheet winch	2x Lewmar ST
Halyard winches	4x Lewmar ST
Multifunctional winches	halyard/sheet winches 3x Lewmar ST 1x Lewmar Electric on mizzen mast for the mainsail
Spi-pole	2x
Jockey-pole	2x
Extra info	All sails (except the mizzen) are electrically operated, for safety from the cockpit.



AMEL SUPER MARAMU 2000



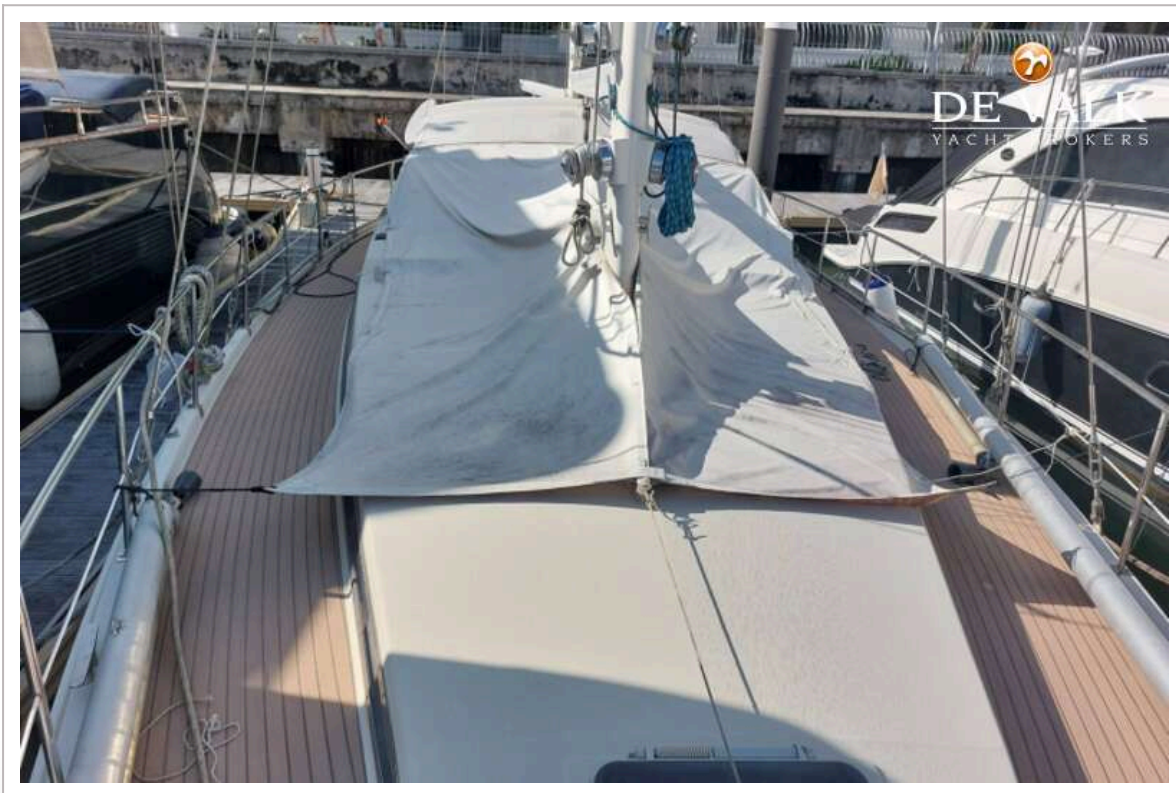
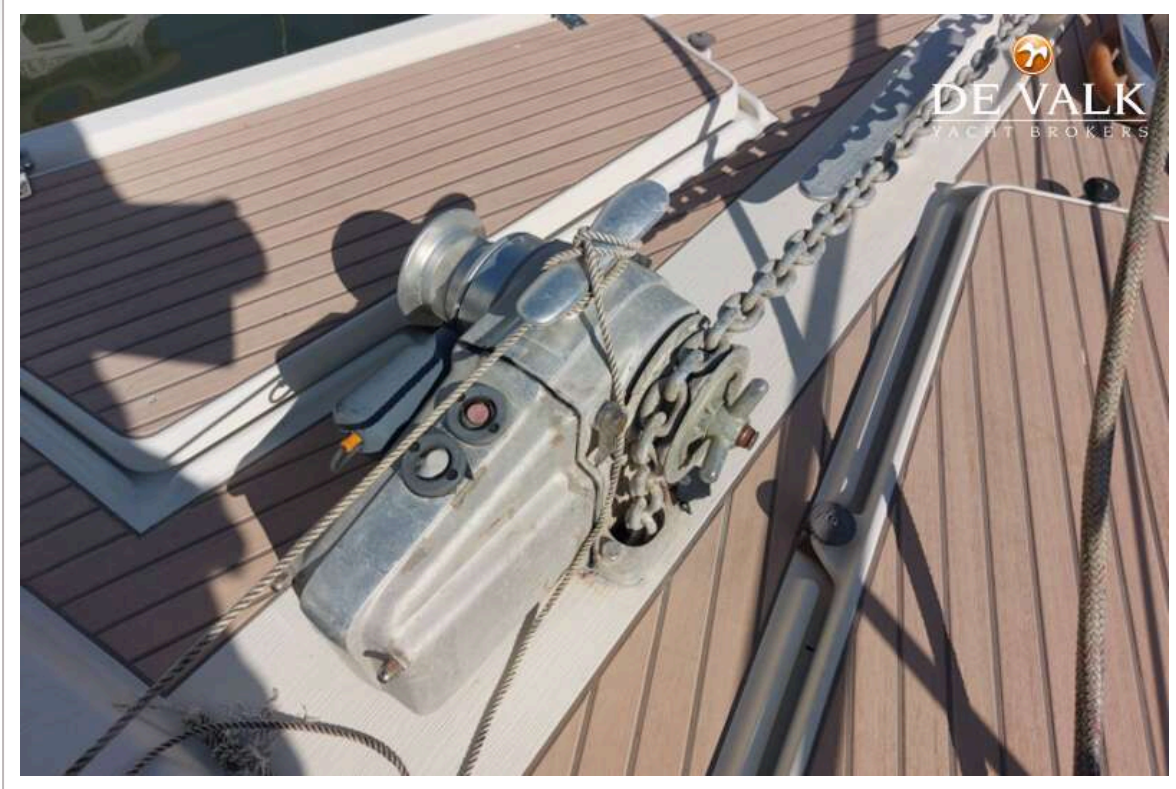
AMEL SUPER MARAMU 2000



AMEL SUPER MARAMU 2000



AMEL SUPER MARAMU 2000



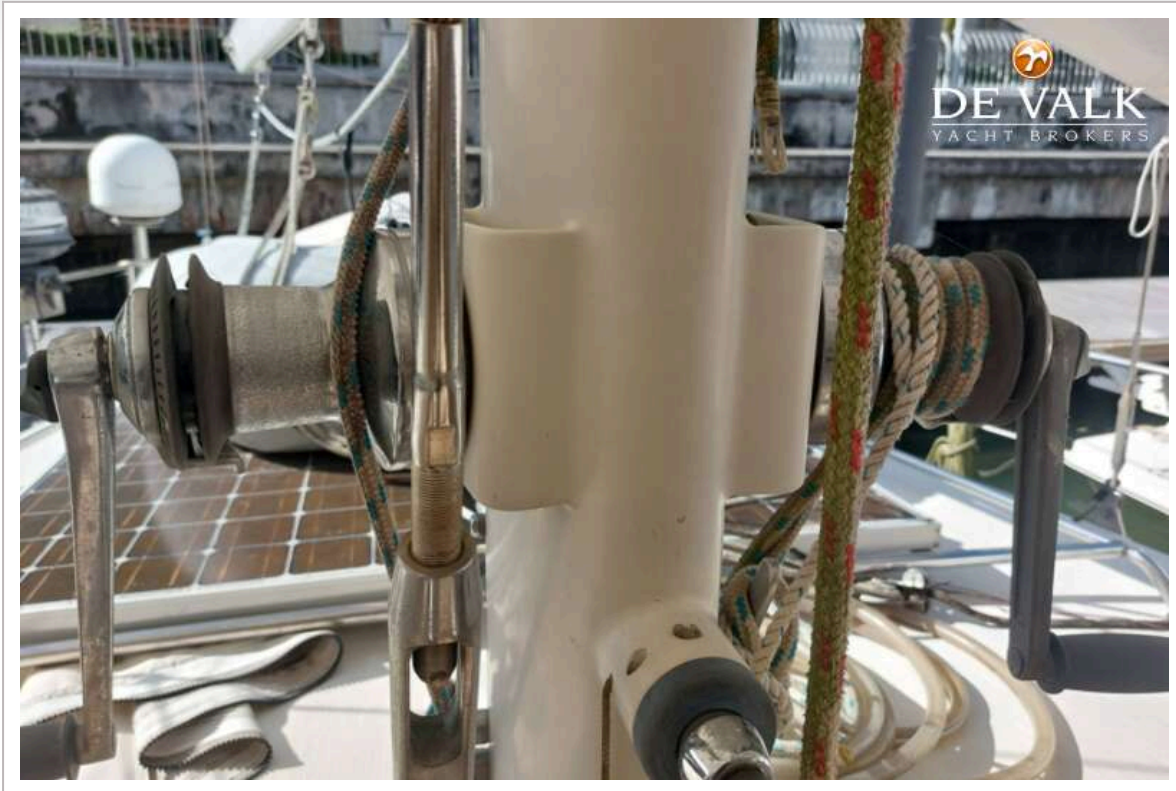
AMEL SUPER MARAMU 2000



AMEL SUPER MARAMU 2000



AMEL SUPER MARAMU 2000

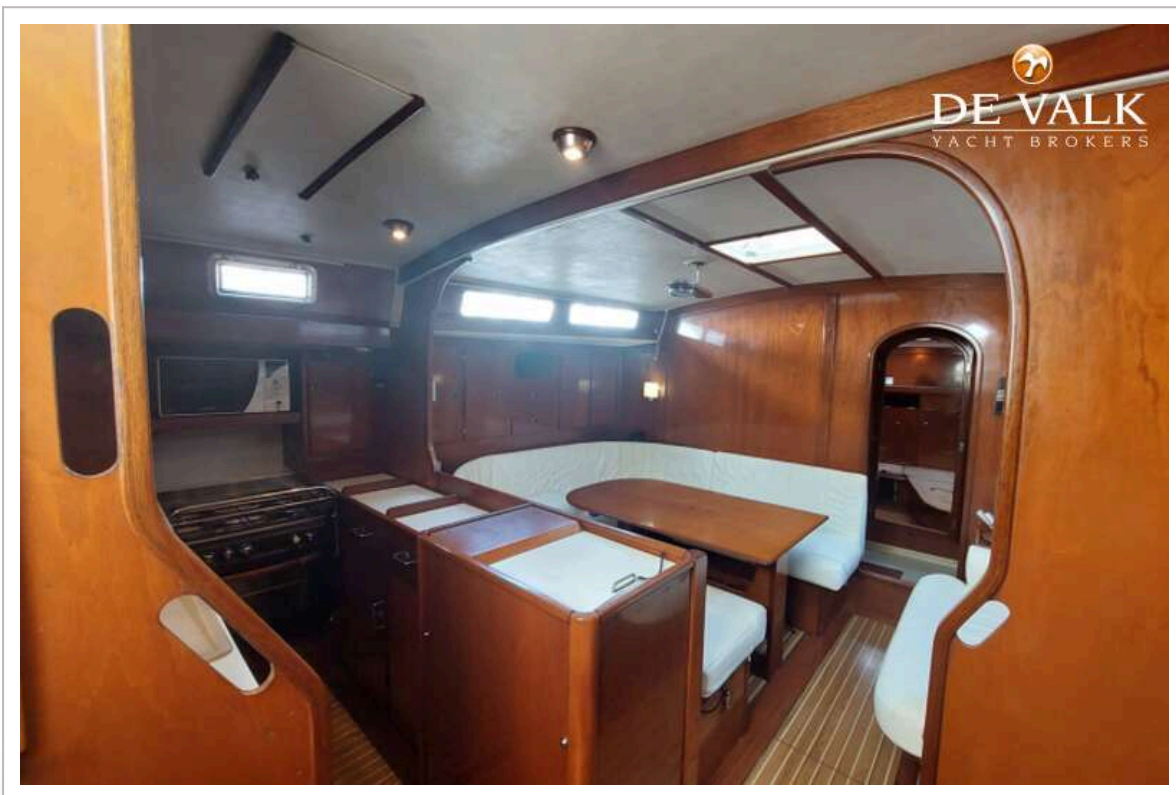


AMEL SUPER MARAMU 2000

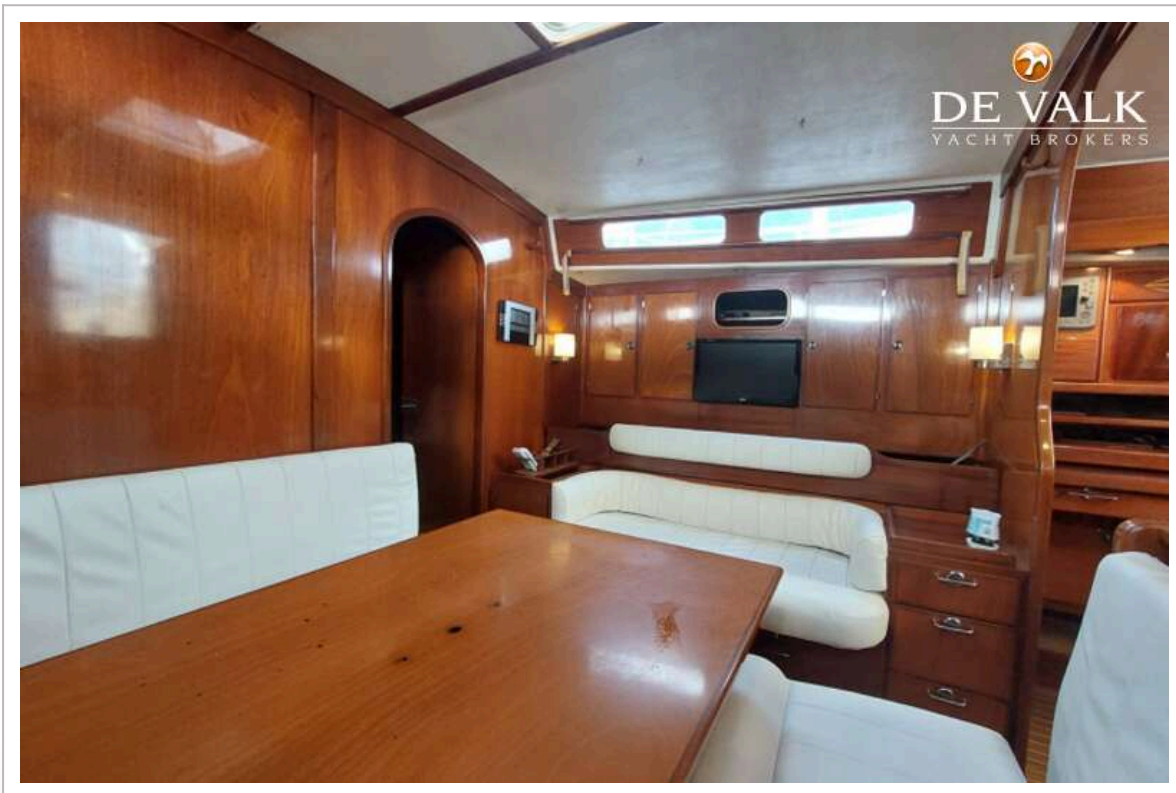
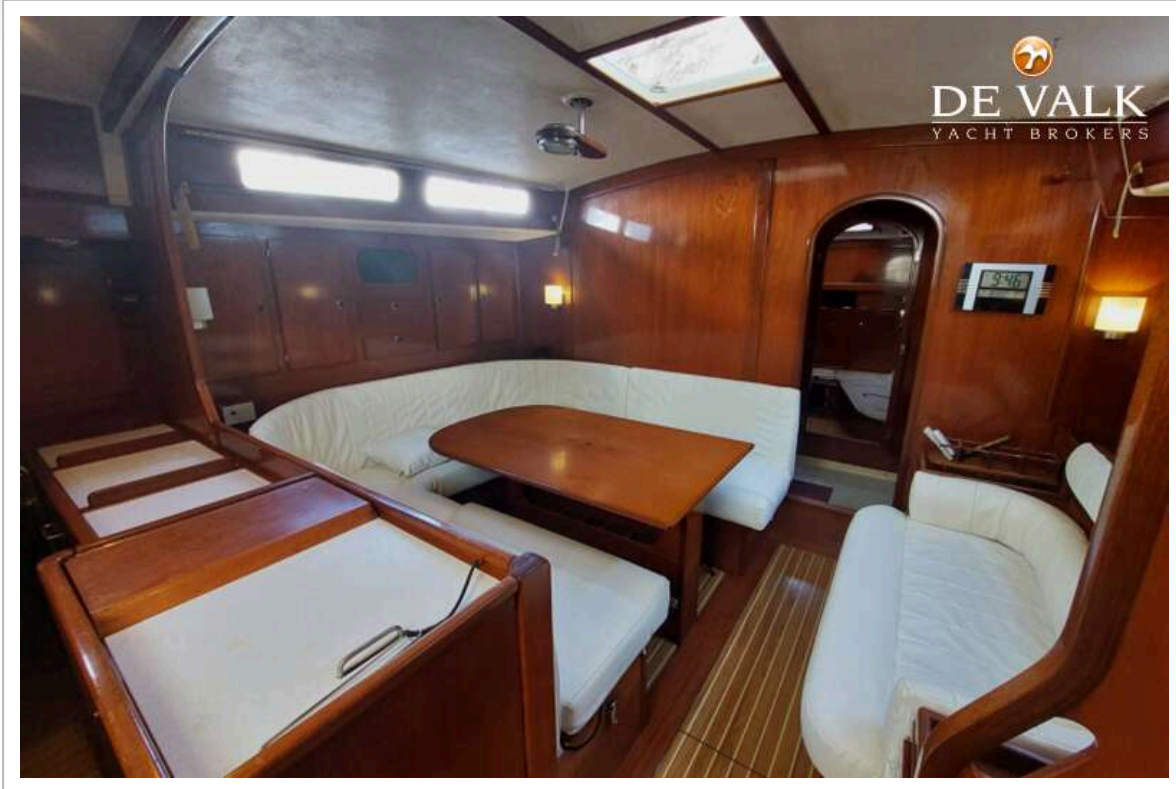




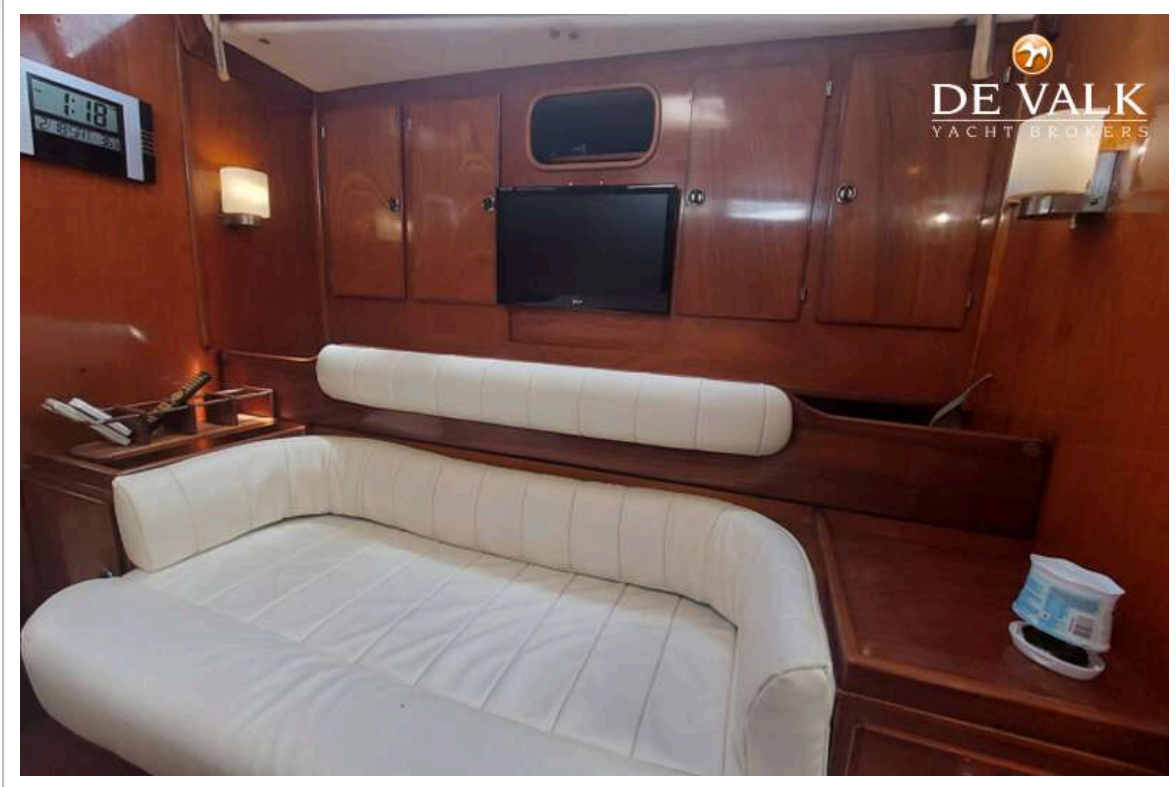
AMEL SUPER MARAMU 2000



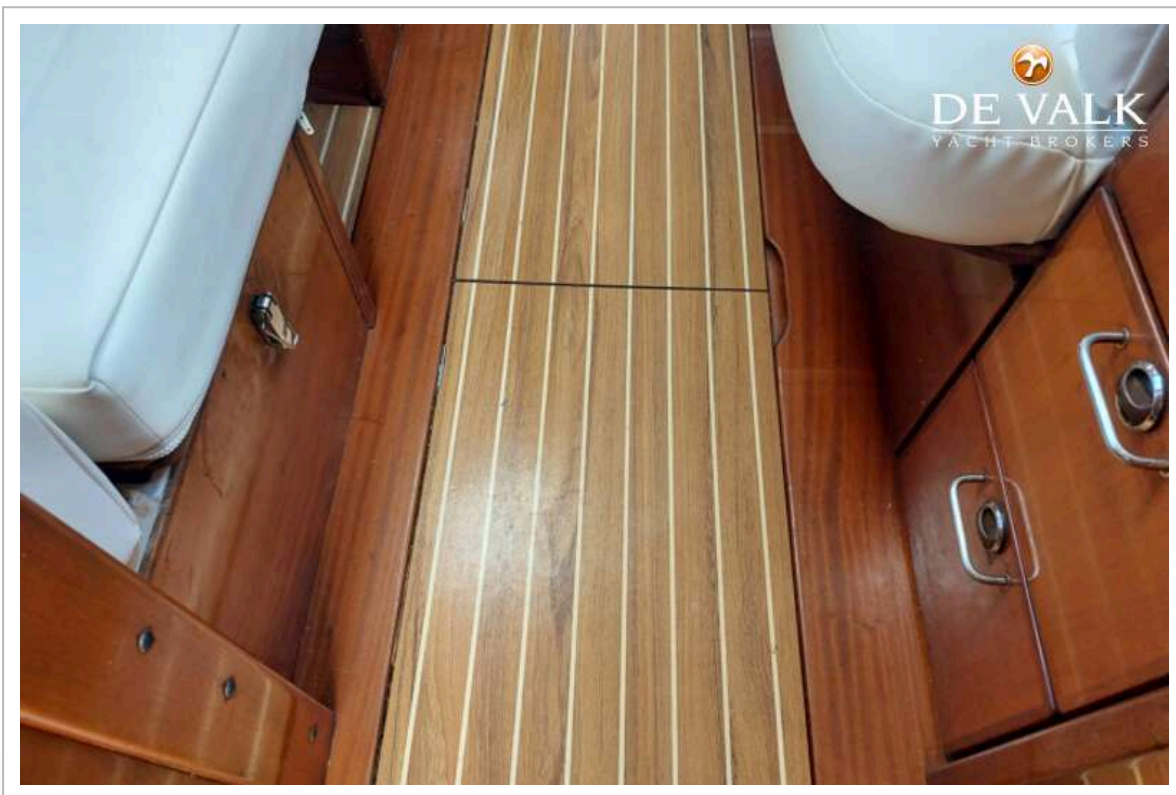
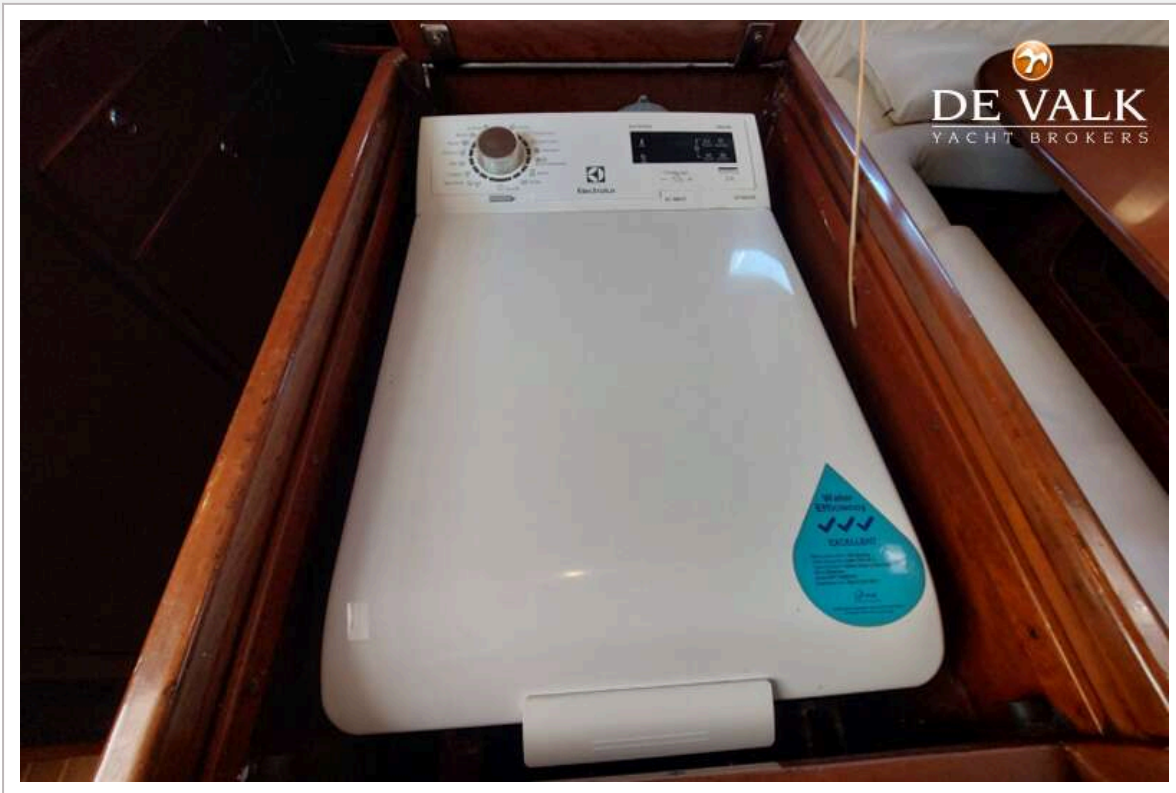
AMEL SUPER MARAMU 2000



AMEL SUPER MARAMU 2000



AMEL SUPER MARAMU 2000



AMEL SUPER MARAMU 2000



AMEL SUPER MARAMU 2000



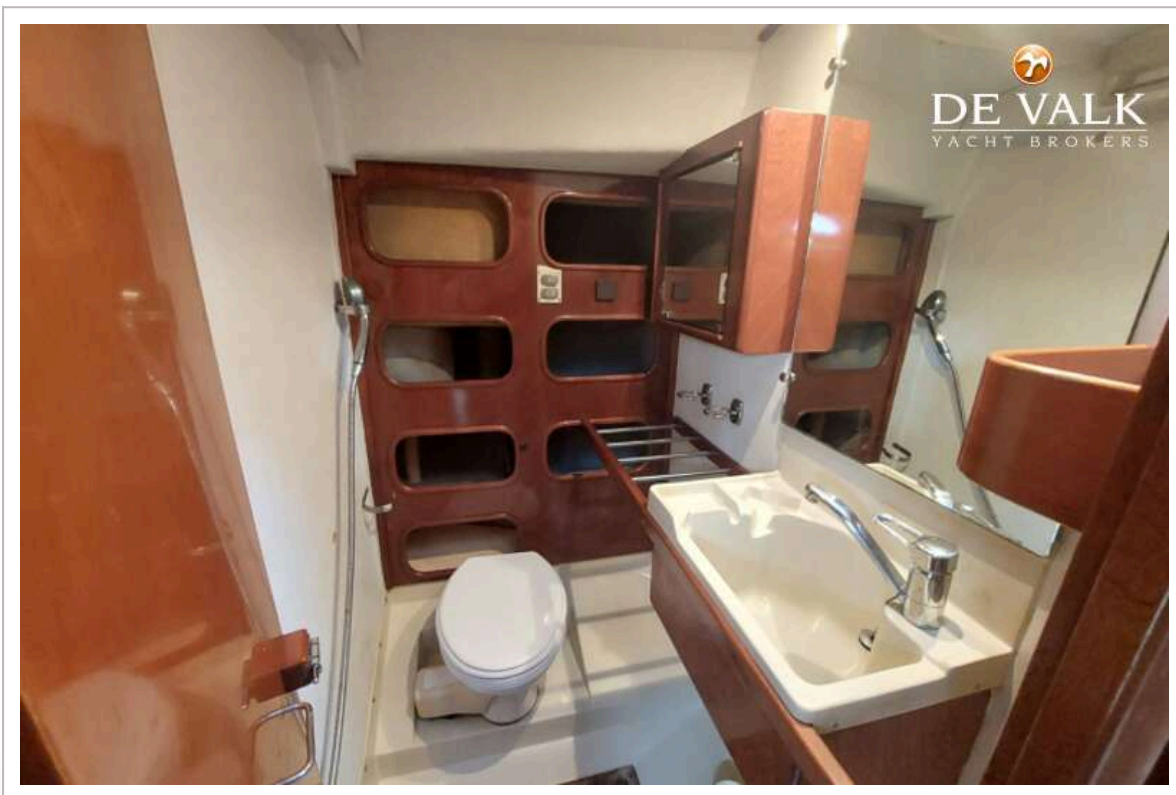
AMEL SUPER MARAMU 2000



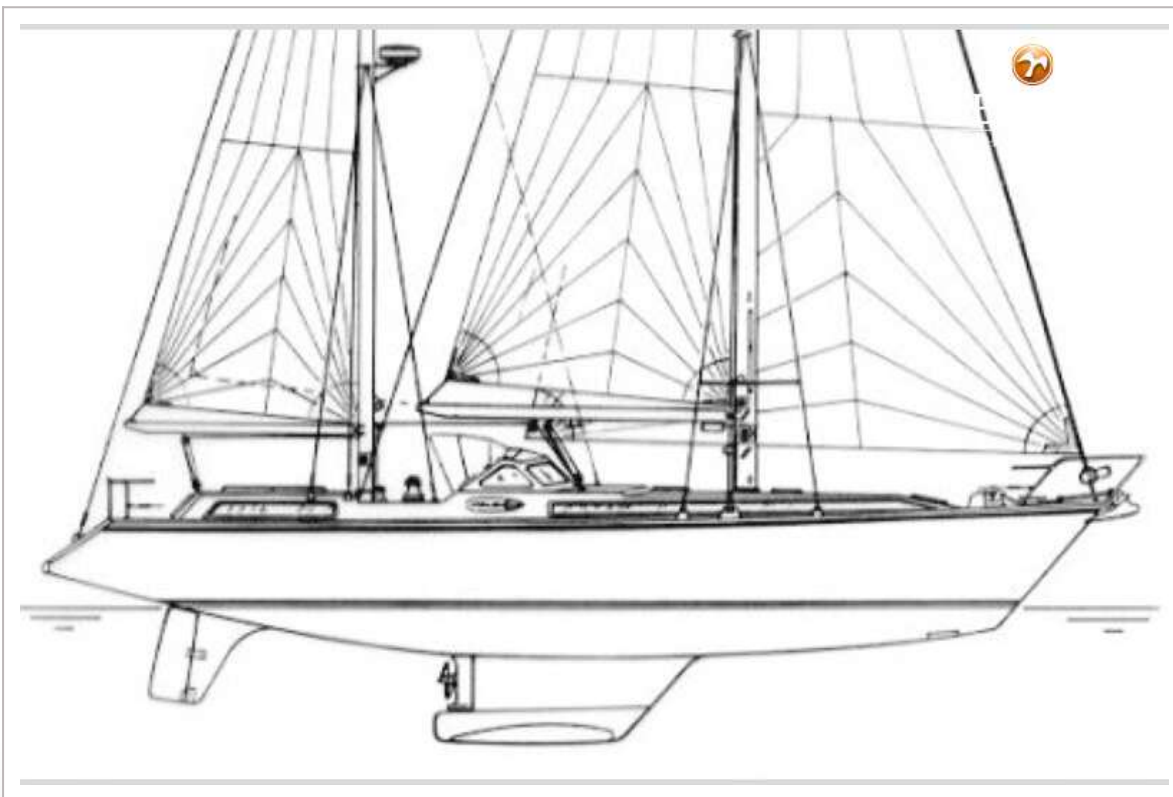
AMEL SUPER MARAMU 2000



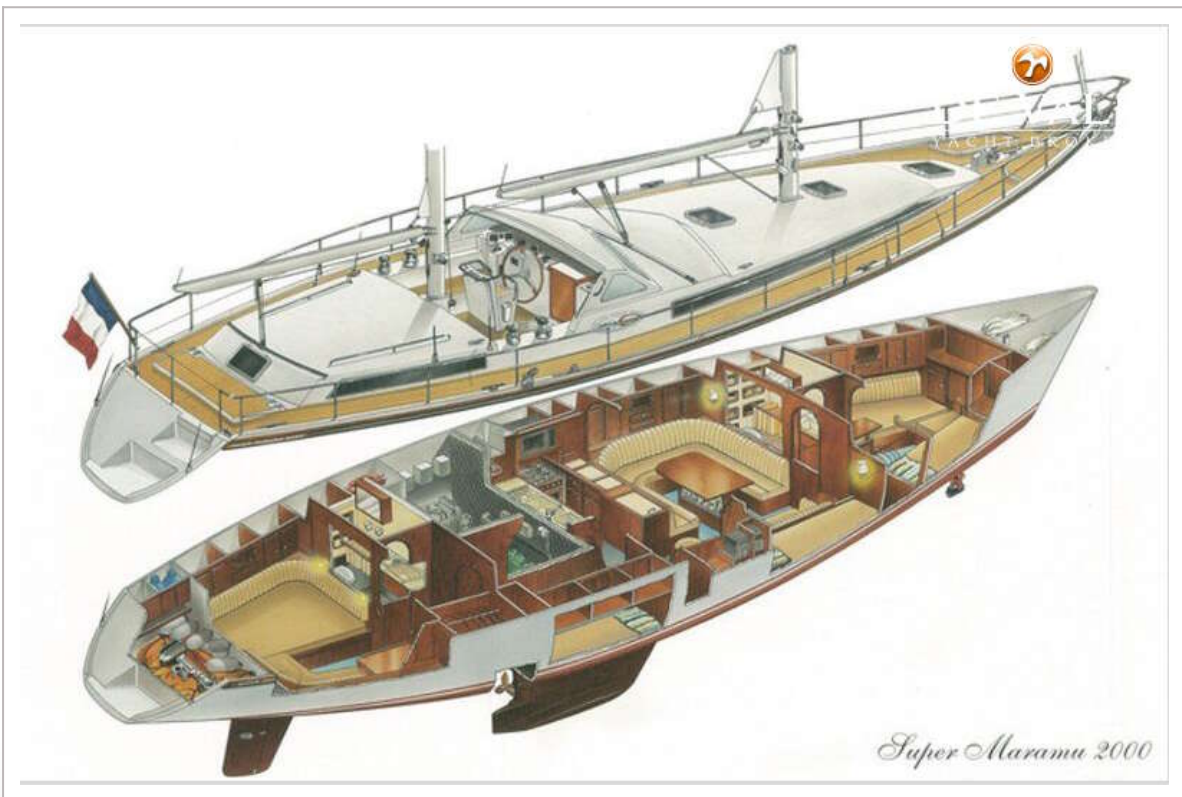
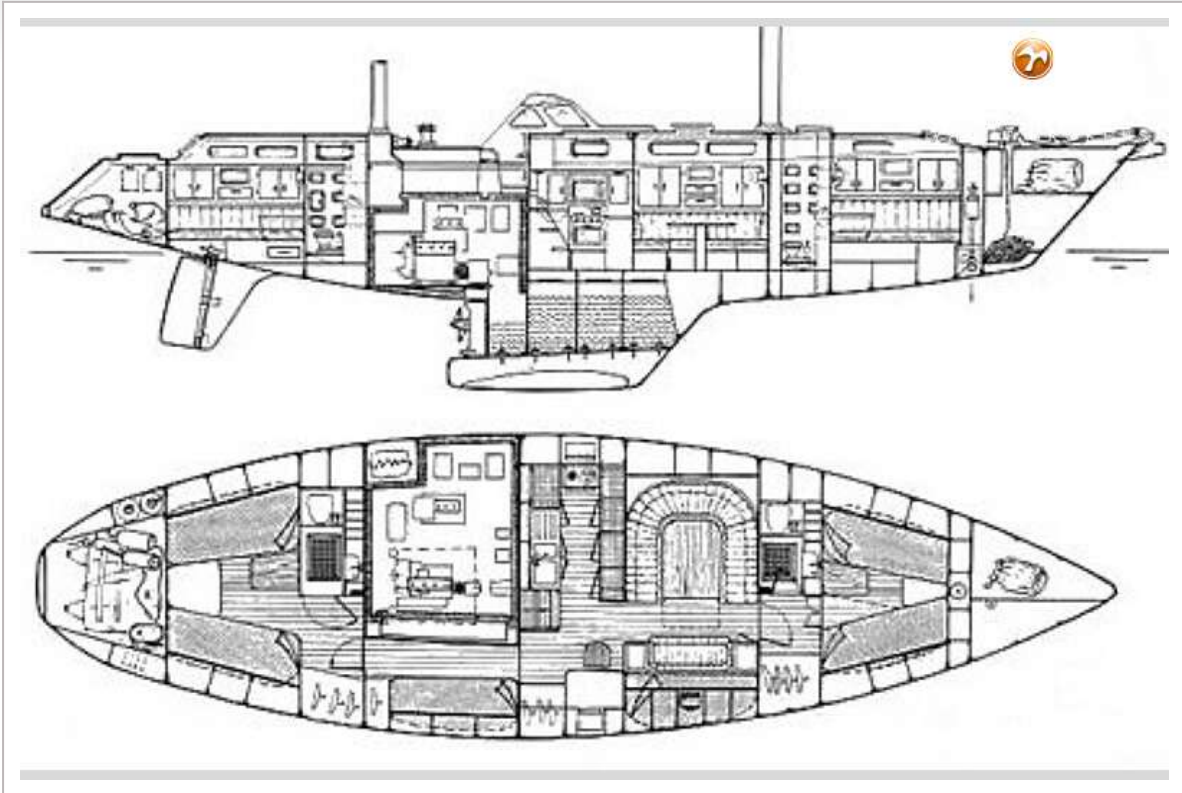
AMEL SUPER MARAMU 2000



AMEL SUPER MARAMU 2000



AMEL SUPER MARAMU 2000



AMEL SUPER MARAMU 2000

