



DE VALK
YACHT BROKERS



ALMTRAWLER DELFINO 65



DE VALK
YACHT BROKERS

ALMTRAWLER DELFINO 65

BROKER'S COMMENTS

Dutch build traditional sea going motor yacht. All comfort on board for long distance cruising and living on board. Hydraulic bow- and stern thruster, stabilizers, twin generators, watermaker. Central heating, airco. Tasteful finished interior. Perfect layout with 4 cabins, spacious wheelhouse and saloon. This Almtrawler will be sold by her first owner and is kept in like new condition by his captian who has been on board since the launch of the vessel. All maintenance has been documented. This Almtrawler can viewed on appointment in Croatia.

Sjoerd Paddenburg

SPECIFICATIONS

Dimensions	21.55 x 6.20 x 1.75 (m)	Builder	Jachtbouw De Alm
Built	2015	Cabins	4
Material	Steel	Berths	8
Engine(s)	2 x Perkins M 300 diesel	Hp/Kw	2 x 300.00 (hp), 220.80 (kw)
Asking price	€ 1.650.000 (VAT Not paid)	Lying	elsewhere / Not at sales office

CONTACT

Sales office	De Valk Loosdrecht B.V.	Telephone	+31 (0)35 582 90 30
Address	't Breukeleveense Meentje 6 1231LM Loosdrecht / Wijdmeren NL	E-mail	loosdrecht@devalk.nl

DISCLAIMER

These particulars are given in good faith as supplied but cannot be guaranteed.



ALMTRAWLER DELFINO 65

GENERAL

Model	ALMTRAWLER DELFINO 65
Type	motor yacht
LOA (m)	21,55
Beam (m)	6,20
Draft (m)	1,75
Air draft (m)	7,60
Air draft min (m)	4,95
Year built	2015
Launched	2015
Builder	Jachtbouw De Alm
Country	The Netherlands
Designer	Werner yacht design
Displacement (t)	80
CE norm	A
Hull material	steel
Hull colour	blue
Hull thickness (mm)	8 & 6 mm
Hull shape	multi hard chine
Superstructure material	steel
Superstructure (mm)	5
Rubbing strake	rubber
Deck material	steel
Deck finish	teak
Superstructure deck finish	teak
Cockpit deck finish	teak
Antifouling (year)	2023
Window frame	aluminium
Window material	double glazing
Portholes	stainless steel
Insulation	rockwool



ALMTRAWLER DELFINO 65

Flybridge	yes
Flybridge suncover	yes
Mast can be lowered	hydraulic
Fuel tank (litre)	steel 2x 3000 ps/sb engine. + 1x 2000 centre engine. + 1x1000 aft
Level indicator (fuel tank)	Digital
Freshwater tank (litre)	3400
Level indicator (freshwater)	Digital
Blackwater tank (litre)	1000
Level indicator (blackwater)	yes
Blackwater tank extraction	deck extraction + pump
Wheel steering	hydraulic
Inside helm position	yes
Outside helm position	hydraulic
Flybridge helm position	yes
Emergency tiller	yes
More info on paintwork	VDE SuperYachtsystem AWL-Grip

ACCOMMODATION

Cabins	4
Berths	8
Crew cabin	1
Crew berths	2
Interior	cherry
Floor	carpet
Aft deck	yes
Saloon	yes
Heating	central heating Kabola Combi 50kw
Air-conditioning	reverse cycle airco Waeco
Navigation center	yes
Chart table	yes



ALMTRAWLER DELFINO 65

Dinette	yes
Opening door to aft deck	3 parts
Galley	yes
Countertop	corian
Sink	stainless steel
Cooker	induction Miele 2015
Oven	Samsung Dual Compartment installed in 2021
Extractor	Miele 2015
Fridge	yes
Freezer	yes
Wine cooler	Miele
Hot water system	on central heating Kabola + 70 liter electric boiler
Water pressure system	electrical 2 pumps
Dishwasher	Miele 2015
Ice maker	On the flybridge
Owners cabin	French bed
Bed length (m)	2,00 x 1,60
Wardrobe	hanging/drawers/shelves
Bathroom	en suite
Toilet	en suite
Toilet system	electric
Wash basin	in the bathroom
Shower	en suite
Guest cabin 1	double bed
Bed length (m)	2,00 x 1,60
Wardrobe	hanging/drawers/shelves
Bathroom	en suite
Toilet	en suite
Toilet system	electric
Wash basin	in the bathroom
Shower	en suite
Guest cabin 2	twin single



ALMTRAWLER DELFINO 65

Bed length (m)	2,00 x 0,90
Wardrobe	hanging/drawers/shelves
Bathroom	shared
Toilet	shared
Toilet system	electric
Wash basin	in the bathroom
Shower	shared
Crew cabin(s)	yes
Bathroom (crew)	en suite
Toilet (crew)	in bathroom
Toilet system	electric
Wash basin	in the bathroom
Shower (crew)	en suite
Washing machine	Miele 2015
Dryer	Miele 2015
Flybridge	yes
Wet bar	at flybridge
Extra info	Headroom Saloon 2,00m Headroom Pilot House 2,11m
Extra info	Headroom Master C. 2,02 m Headroom Guest C. 2,00m

MACHINERY

No of engines	2
Make	Perkins
Type	M 300
HP	300
kW	220.80
Fuel	diesel
Maximum speed (kn)	11.5
Cruising speed (kn)	8
Consumption (l/hr)	40
Engine hours	1670



ALMTRAWLER DELFINO 65

Engine cooling system	freshwater heat exchanger
Drive	shaft
Shaft seal	2021
Engine controls	electrical
Gearbox	hydraulic ZF 280-1 2,478:1 ratio
Bowthruster	hydraulic Vetus 310 kgf
Sternthruster	hydraulic Vetus 310 kgf
Exhaust	watercooled
Thrust bearing	yes
Propeller type	fixed
Propeller blades	4
Propeller shaft material	stainless steel
Shaft lubrication	water
Electric bilge pump	2 bilgepumps with a manifold for 4 separate area's
Bilge alarm	yes
Electrical installation	12/24/220 Volt designed and approved by Whisper Power
Generator	Whisper 16KW
Generator 2	Whisper 16KW
Batteries	yes
Start battery	4x AGM 225 Ah Mastervolt
Service battery	1000Ah 2-volt cells batteries
Generator battery	2x AGM 145Ah Mastervolt
Battery monitor	Whisper
Battery charger	yes
Battery charger/inverter	2x Whisper 3500W/32A
Solar panel	3x
Diode battery combiners	yes
Shorepower	with cable 2x
Insulation transformer	yes
Watermaker	Schenker Modular 60
Stabilizers	Hydraulic Fin stabilizers (VETUS)



NAVIGATION

Electric compass	Raymarine Autopilot
Depth sounder	Raymarine
Log	Raymarine
VHF	Raymarine
Autopilot	Raymarine
Rudder angle indicator	Raymarine autopilot display
Radar	Raymarine open scanner 4KW
Radar/GPS/plotter	2x Raymarine E125 + 1x Raymarine E125 outside
Navtex	Furuno
Wifi antenna	yes
AIS transceiver	Raymarine
Camera	4x sb & port, rear and engineroom
Navigation lights	yes

EQUIPMENT

Bimini	2x
Sun awning	1x
Cockpit cushions	yes
Cockpit table	Teak
Cockpit chairs	4x teak director chairs
Bathing platform	yes
Boarding ladder	yes
Gangway	Hydraulic Brenzoni
Deck shower	yes
Anchor	Danforth Stainless steel
Anchor chain	80m 13mm DIN766
Anchor 2	Danforth Stainless steel
Anchor chain	80m 13mm DIN766
Windlass	hydraulic
Windlass aft	hydraulic 2x



ALMTRAWLER DELFINO 65

Deck wash	2x
Dinghy	Brig F450 2015
Outboard	Mercury 60hp 4 cilinder 4stroke
Deck crane	electric 400KG Brenzoni electric/hydraulic
Sea railing	stainless steel
Railing side opening gates	yes
Life raft	yes
Wiper	5x Exalto
Horn	air pressure
Fenders	yes
Mooring lines	yes
TV	40" LCD
TracVision ball	2x Tracvision TV6
Radio	yes
Surround Sound System	Samsung
Auto extinguisher system	yes
Extra info	Dive compressor



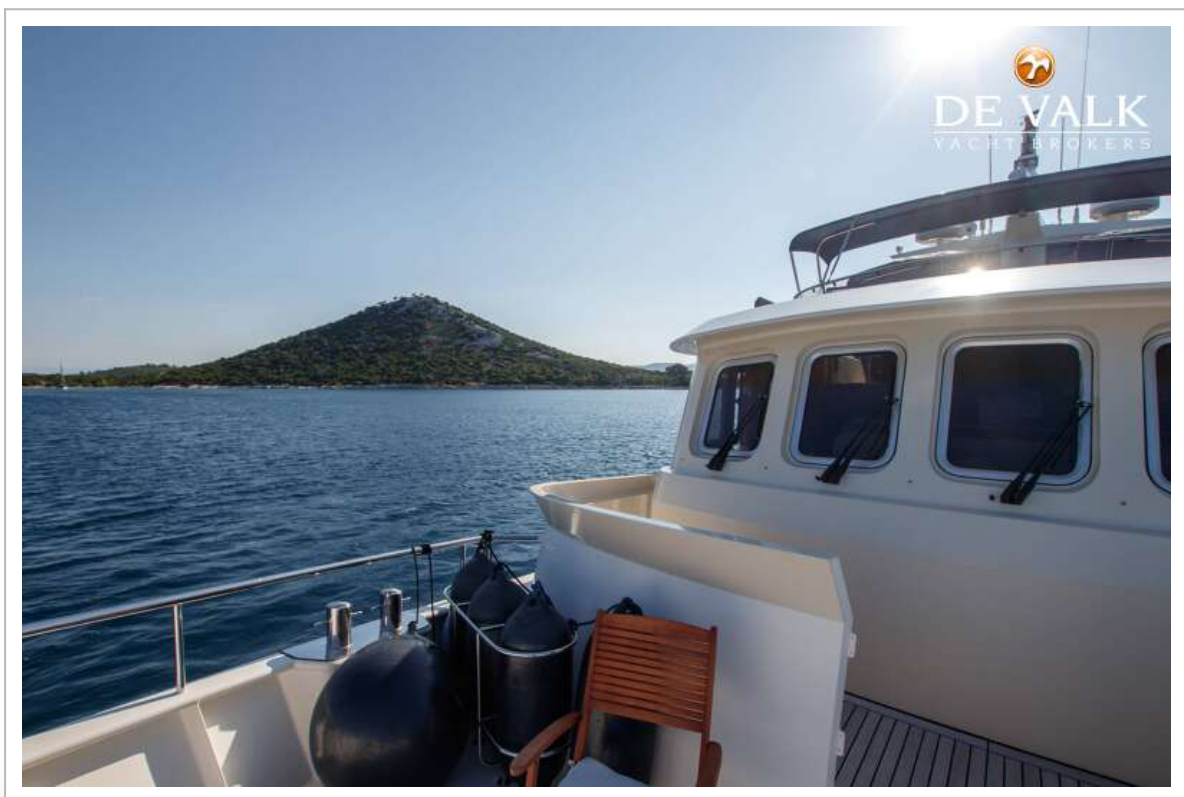
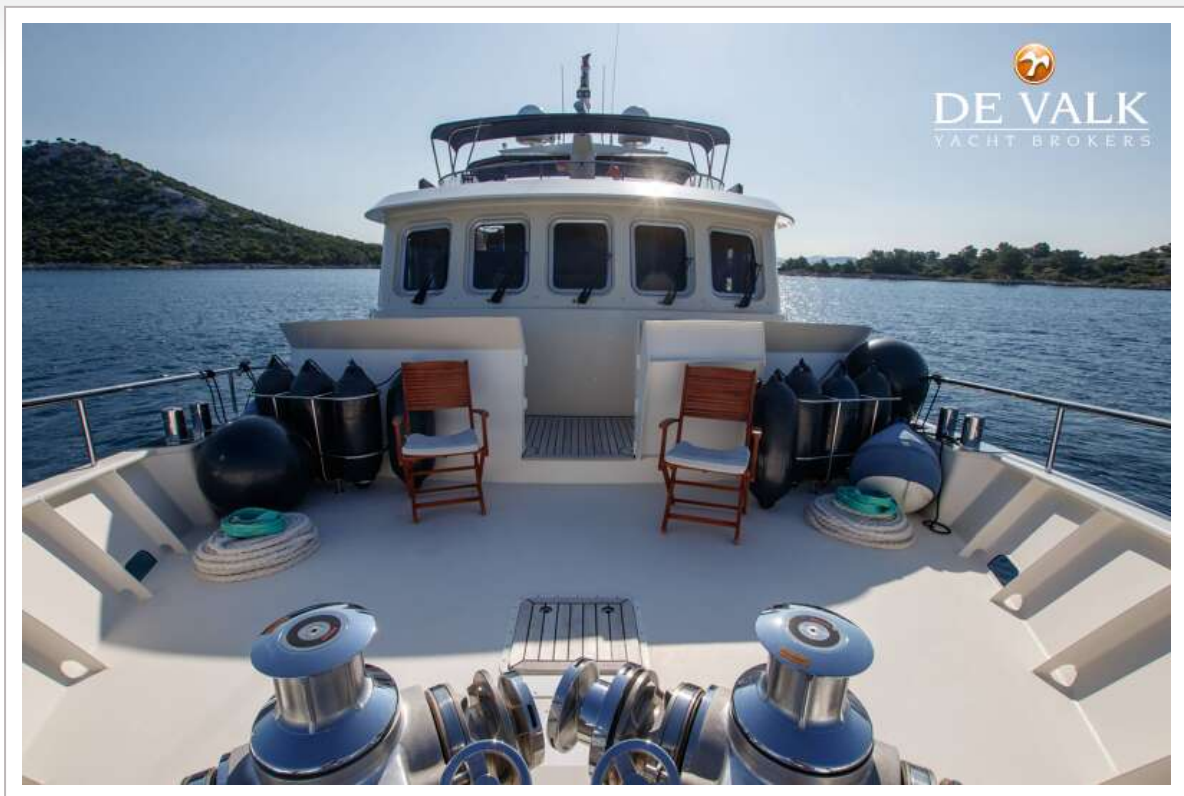
ALMTRAWLER DELFINO 65



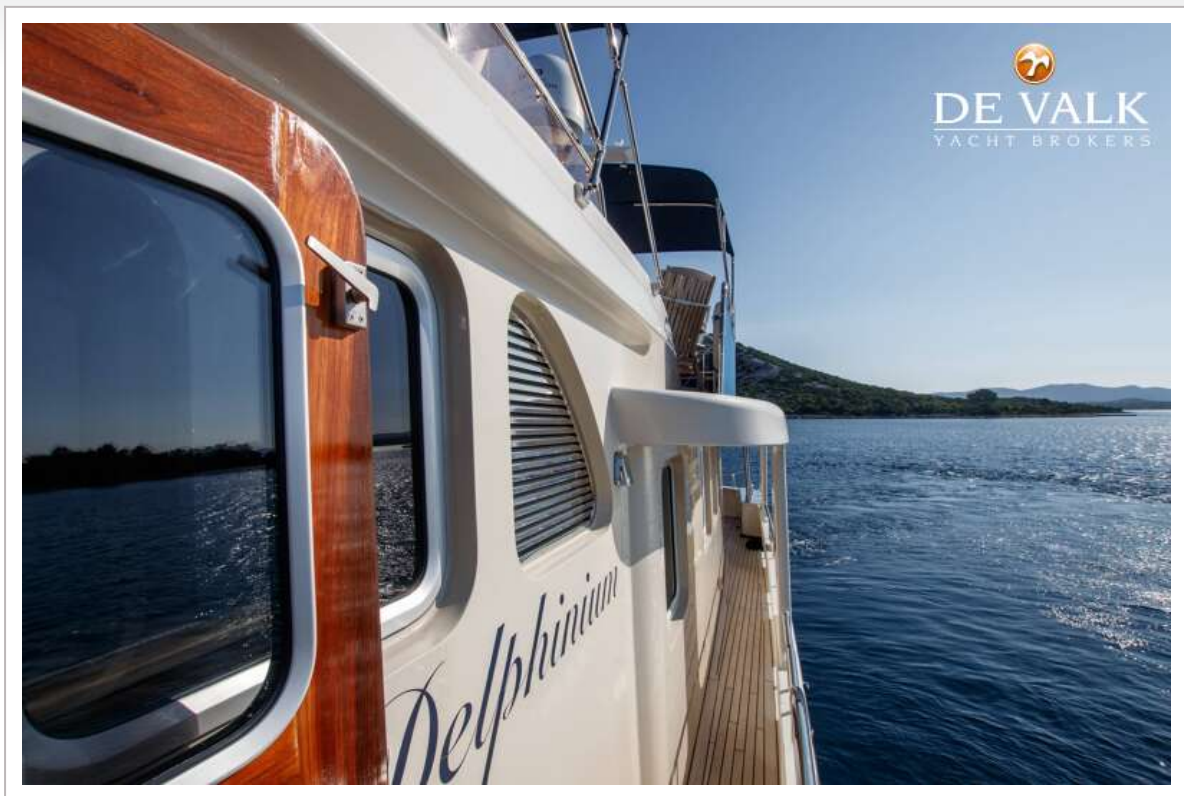
ALMTRAWLER DELFINO 65



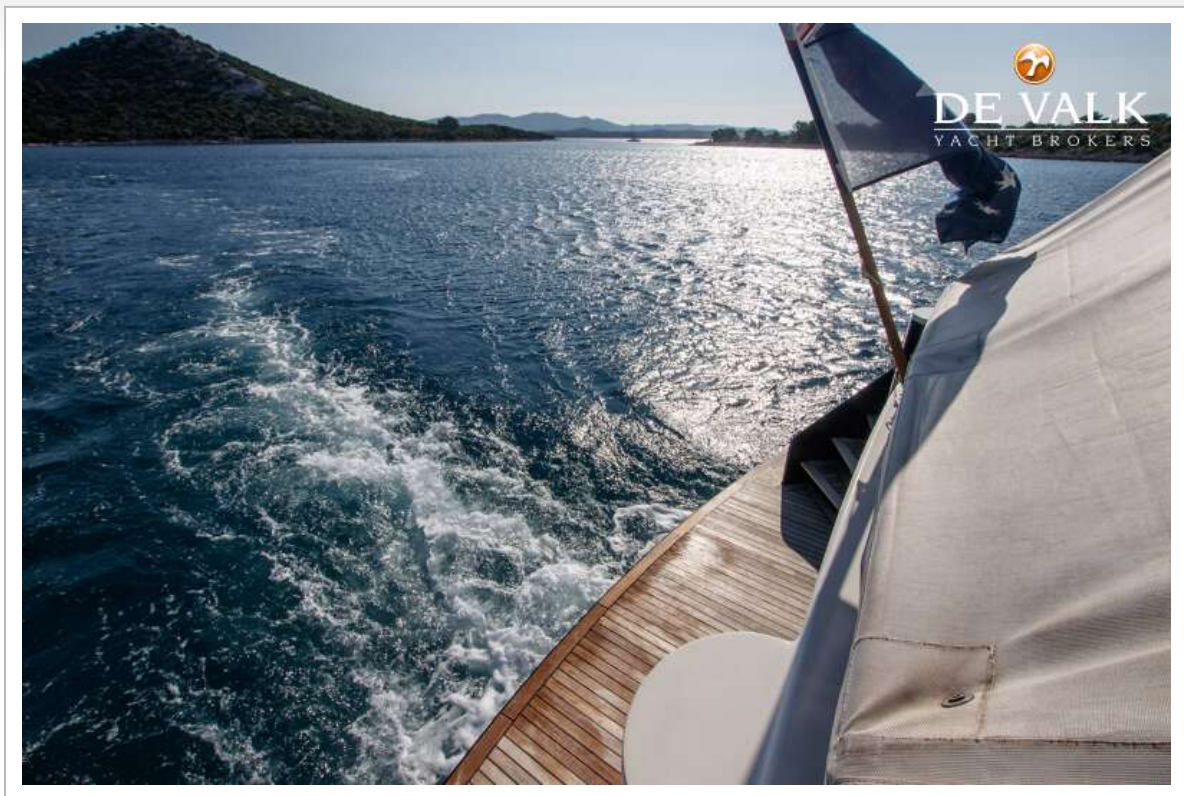
ALMTRAWLER DELFINO 65



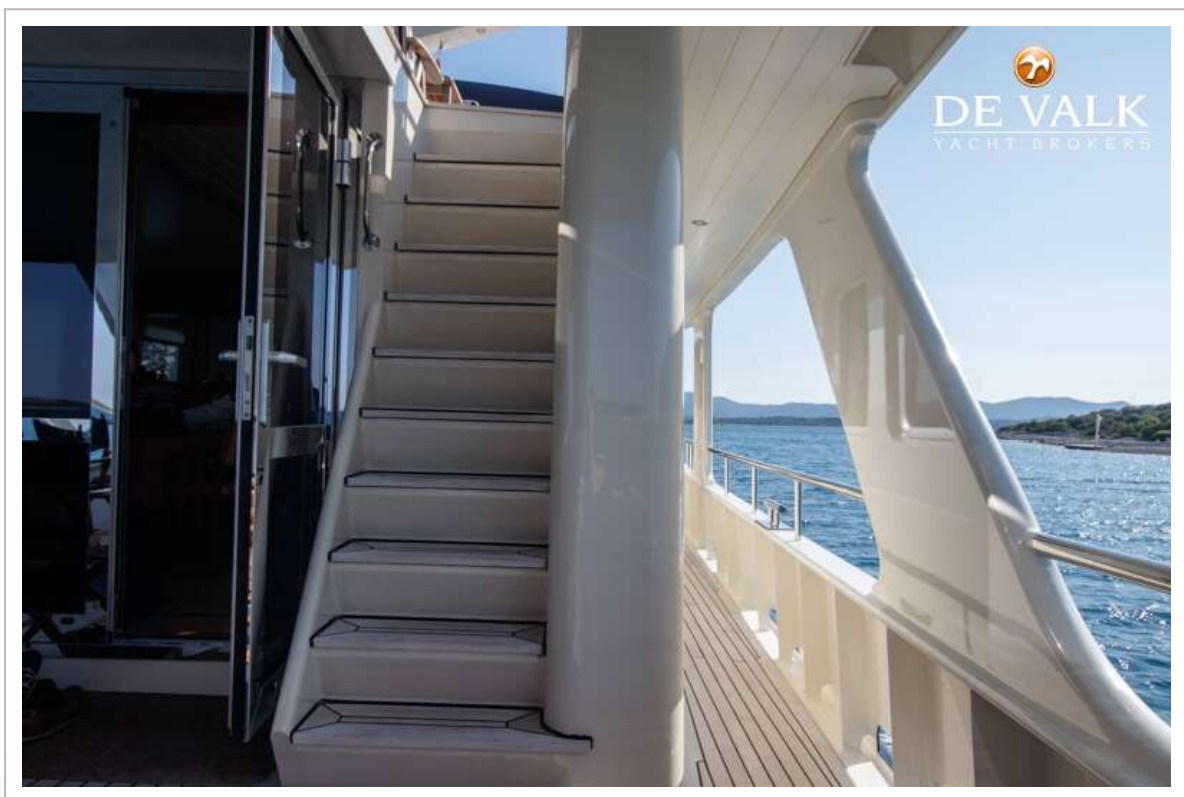
ALMTRAWLER DELFINO 65



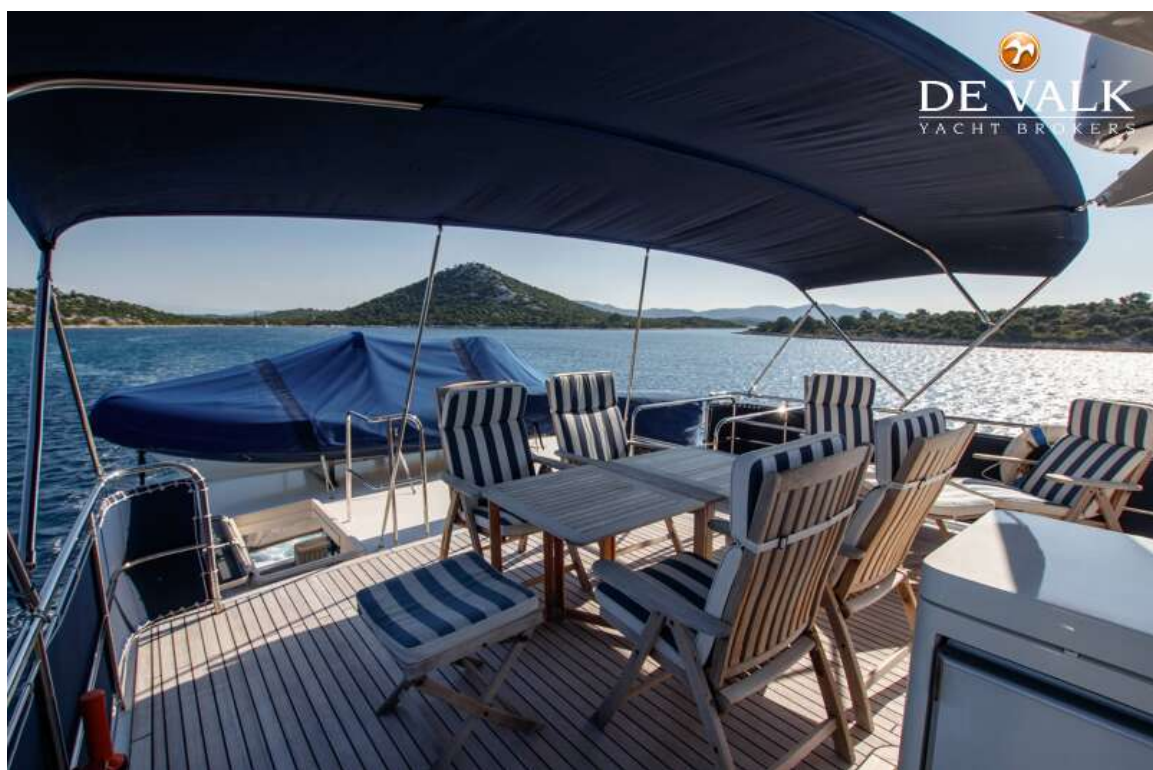
ALMTRAWLER DELFINO 65



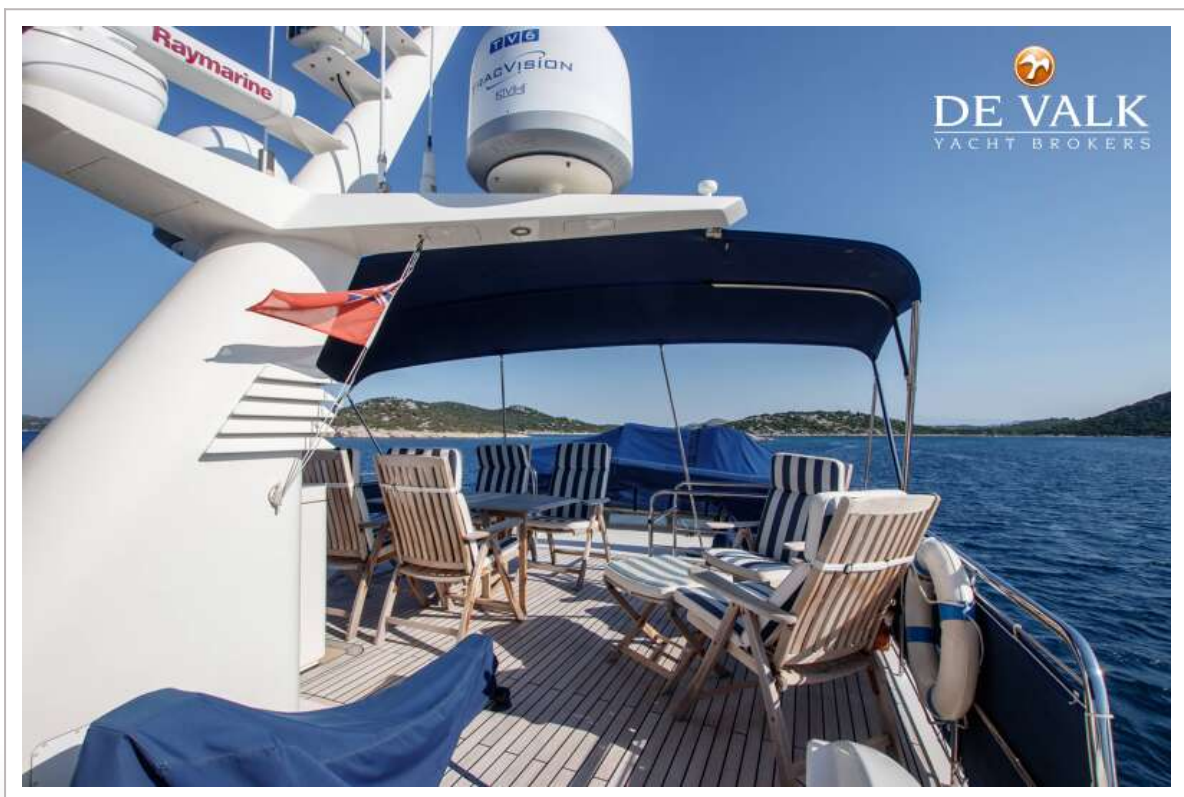
ALMTRAWLER DELFINO 65



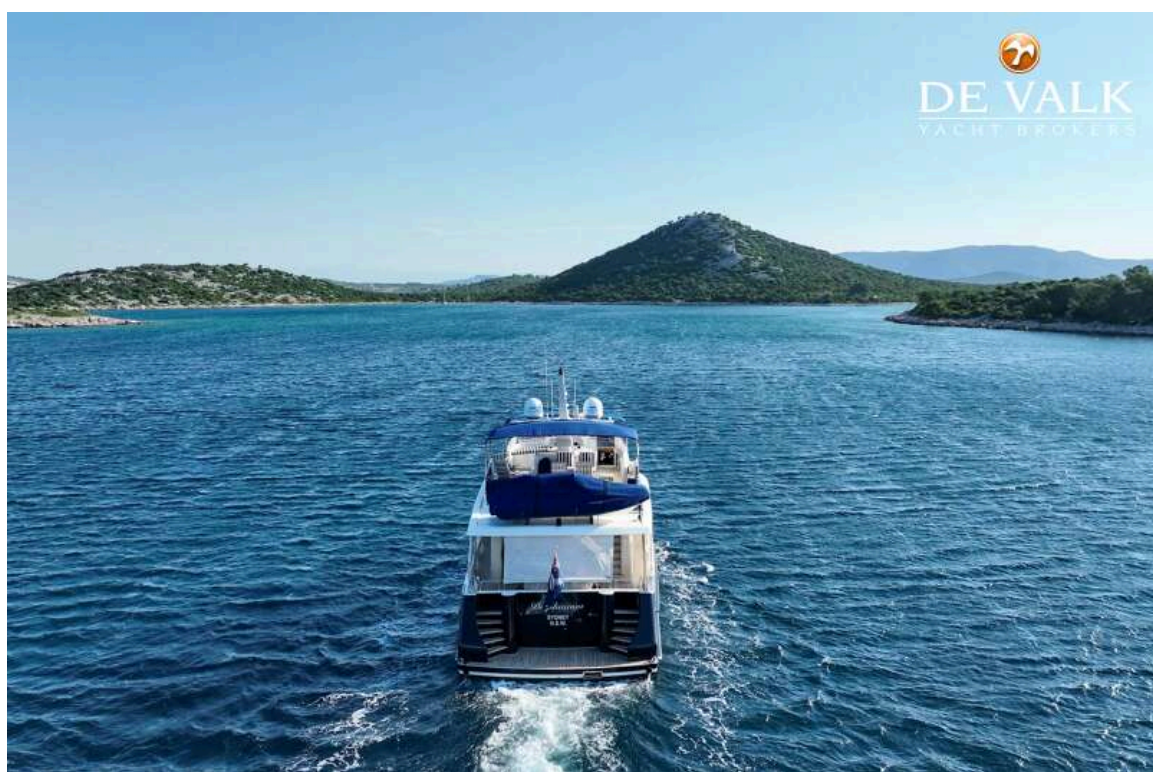
ALMTRAWLER DELFINO 65



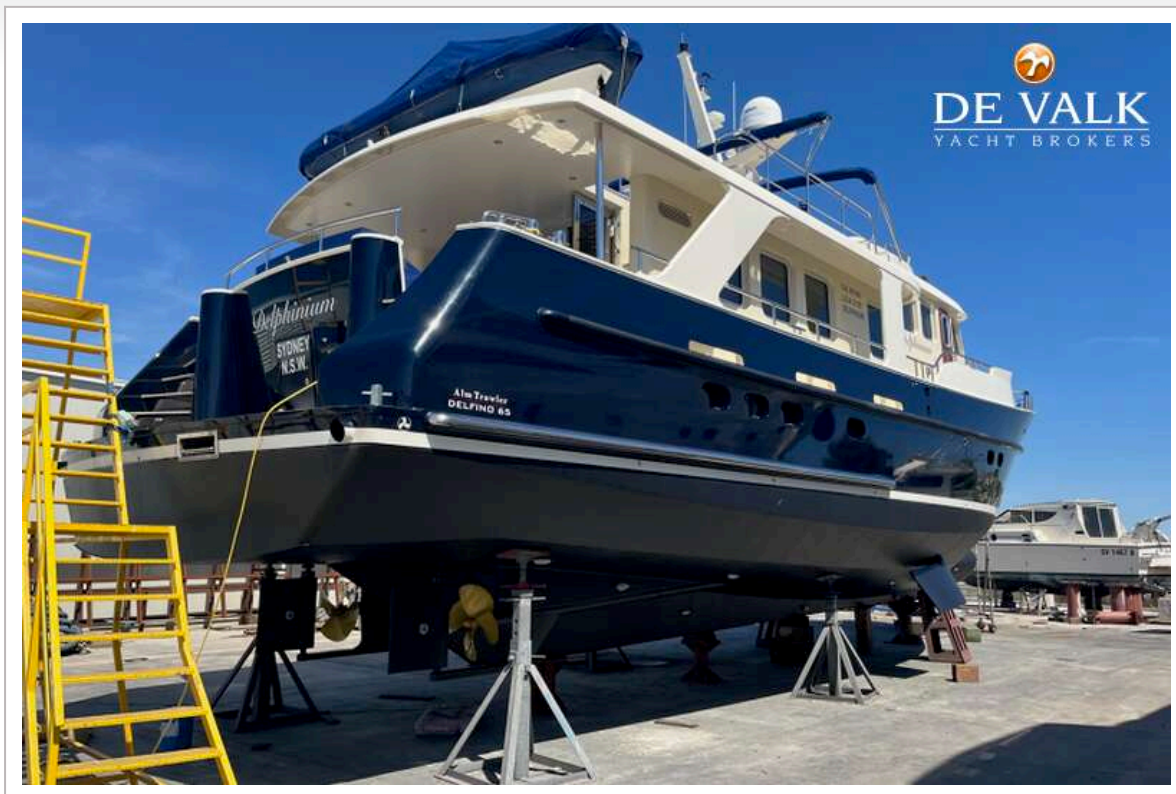
ALMTRAWLER DELFINO 65



ALMTRAWLER DELFINO 65



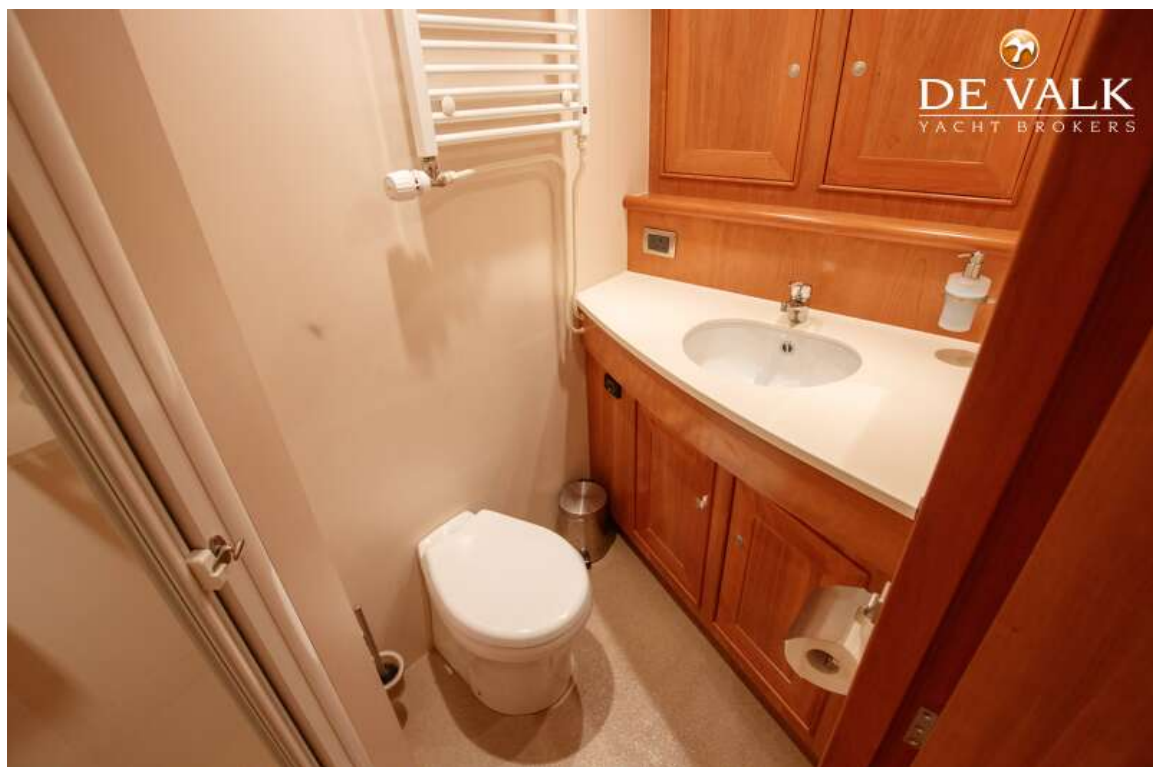
ALMTRAWLER DELFINO 65



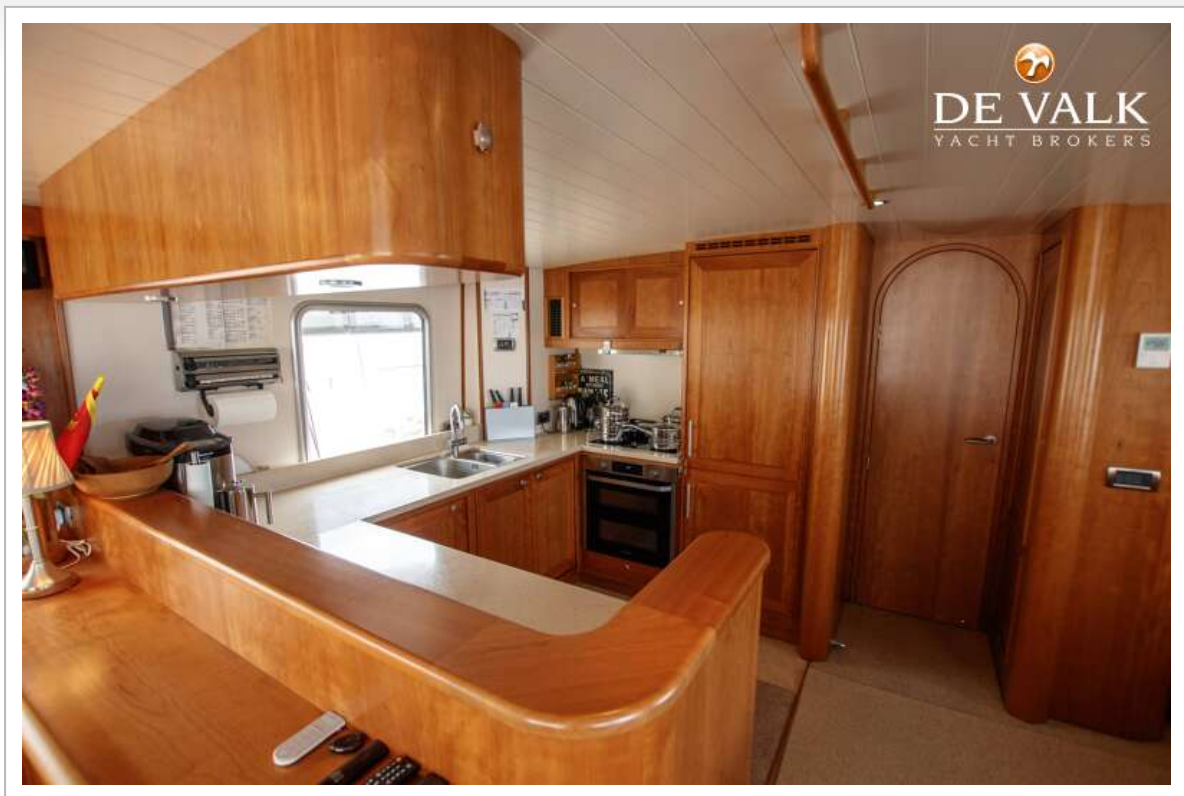
ALMTRAWLER DELFINO 65



ALMTRAWLER DELFINO 65



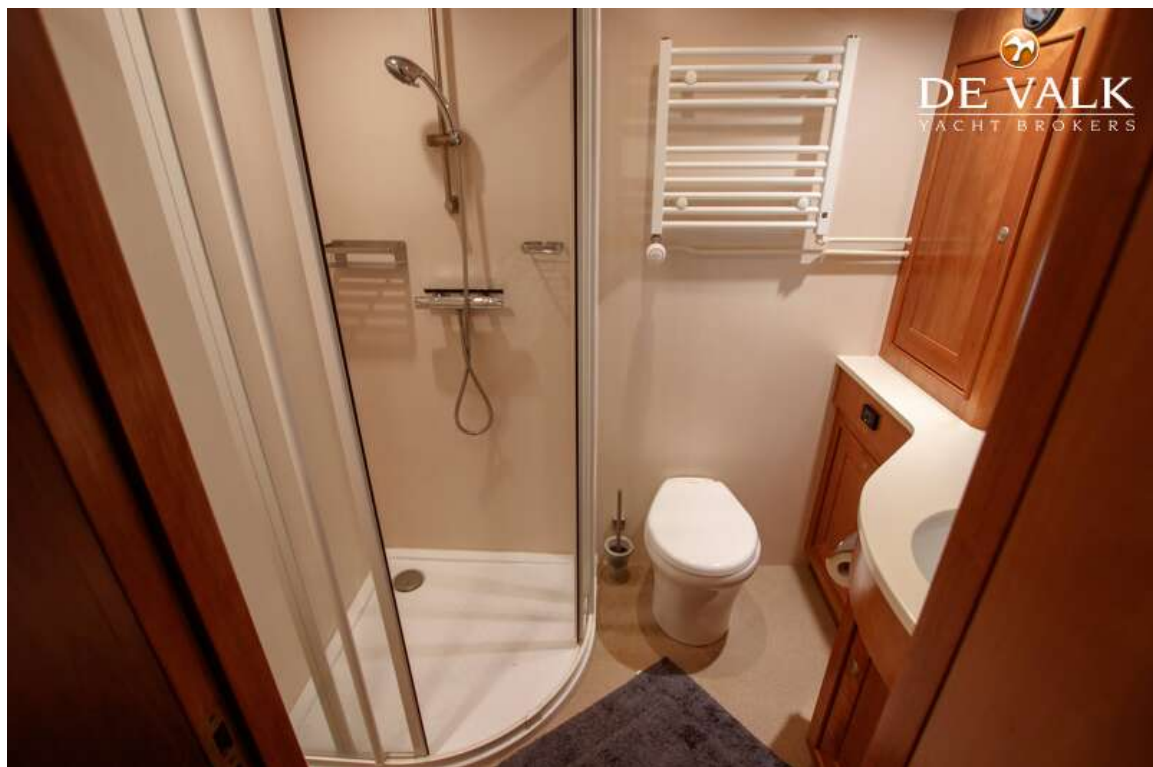
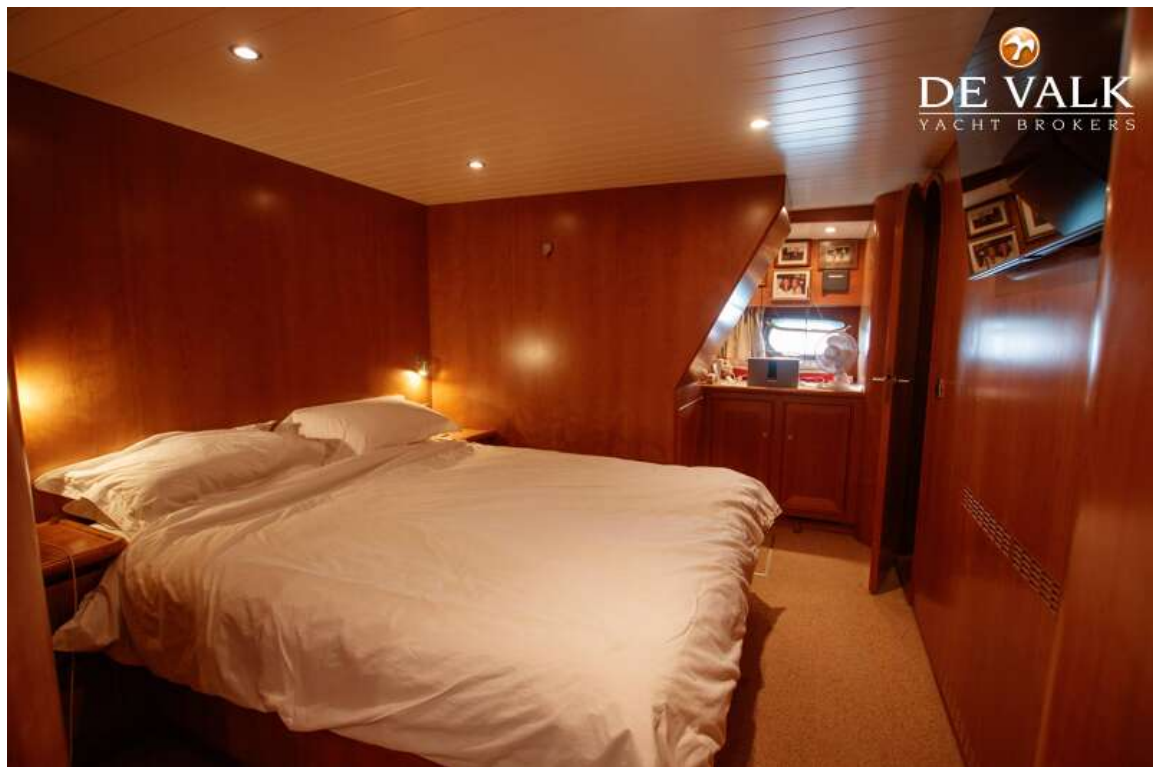
ALMTRAWLER DELFINO 65



ALMTRAWLER DELFINO 65



ALMTRAWLER DELFINO 65



ALMTRAWLER DELFINO 65



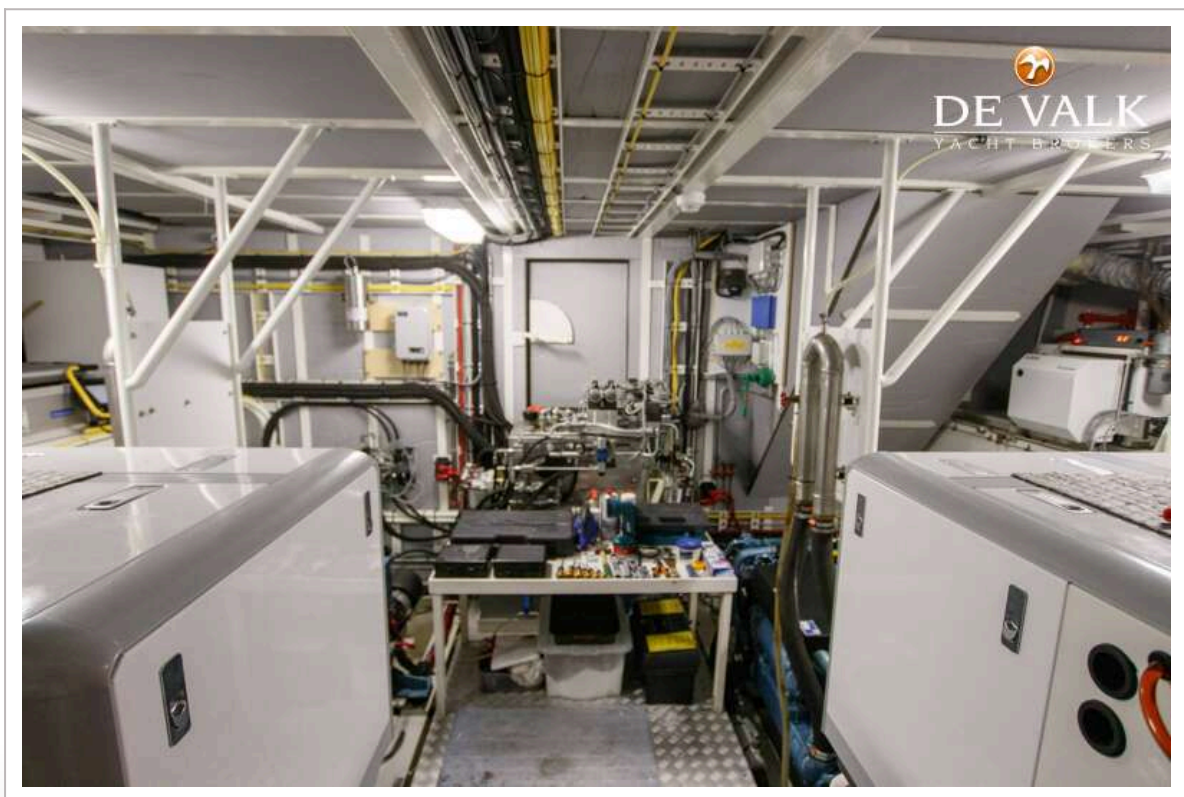
ALMTRAWLER DELFINO 65



ALMTRAWLER DELFINO 65



ALMTRAWLER DELFINO 65



ALMTRAWLER DELFINO 65



ALMTRAWLER DELFINO 65

