



DE VALK
YACHT BROKERS



EXPLORER MOTOR YACHT ASTRA



DE VALK
YACHT BROKERS

EXPLORER MOTOR YACHT ASTRA

BROKER'S COMMENTS

ASTRA is a super strong expedition vessel that can go anywhere in the world, regardless of the weather. Astra was originally built in class with DNV, rated Ice Class Super 1A and was later upgraded significantly (E+1 mio.) in 2021 to exceed performance. She completed the circumnavigation in the southern hemisphere from 2021-2022. Please see: www.mv-astra.com The layout of Astra is both very practical and comfortable and provides an easy access between all areas and decks. Big ship technology compactly presented. Whistle clean and turn key ready.

Tue Simon Fasting

SPECIFICATIONS

Dimensions	23.35 x 6.63 x 2,50 / 3.20 (m)	Builder	Smogens Plat & Svetsindustri AB
Built	1995	Cabins	5
Material	Steel	Berths	9
Engine(s)	1 x Mitsubishi S6U-MPTK diesel	Hp/Kw	1,350.00 (hp), 993.60 (kw)
Asking price	sold (VAT)	Lying	Spain

CONTACT

Sales office	De Valk Barcelona	Telephone	+34 932 202 825
Address	Barcelona region 08392 Barcelona ES	E-mail	barcelona@devalk.nl

DISCLAIMER

These particulars are given in good faith as supplied but cannot be guaranteed.



EXPLORER MOTOR YACHT ASTRA

GENERAL

Model	EXPLORER MOTOR YACHT ASTRA
Type	motor yacht
LOA (m)	23,35
LWL (m)	21,21
Beam (m)	6,63
Draft (m)	3,20
Draft min (m)	2,50
Air draft (m)	12,50
Headroom (m)	2,10
Year built	1995
Launched	1995
Builder	Smogens Plat & Svetsindustri AB
Country	Sweden
Designer	FKAB Marine Design
Displacement (t)	175
Gross tonnage	156
Net tonnage	96
CE norm	A
Hull material	steel
Hull colour	blue Jotun two-part paint
Hull thickness (mm)	16 - protected with 52 anodes (replaced 2024)
Hull shape	Built in Class with DNV and rated as Ice Class Super 1A
Superstructure material	aluminium Triclad bi-metallic strip joints the hull to the superstructure.
Rubbing strake	Thick rubber rubbing rails on the stern
Deck material	steel
Deck finish	non-skid paint Wet deck - main
Superstructure deck finish	Nos-skid paint and teak imitation - upper deck
Antifouling (year)	NRG SH-2 Sonihull Ultras. (3 transducers) antifouled 2024
Window material	tempered glass
Portholes	aluminium Tempered glass



EXPLORER MOTOR YACHT ASTRA

Insulation	Fiberglass
Flybridge	Portuguese bridge - built in 2017
Radar arch	non collapsible
Fuel tank (litre)	steel 5 tanks total 24,450
Fuel tank 2 (litre)	polyethylene Removable IBC tote tanks on deck total 17,500
Level indicator (fuel tank)	steel Yes
Fuel daytank (litre)	steel 2,300
Level indicator (daytank)	Yes
Freshwater tank (litre)	stainless steel 1730
Level indicator (freshwater)	Yes
Blackwater tank (litre)	stainless steel 1000
Level indicator (blackwater)	Yes
Blackwater tank extraction	deck extraction + pump
Greywater tank (litre)	stainless steel Together with black water
Wheel steering	hydraulic Electro Hydraulic Tenfjord SR562L
More info on hull	Taken out of Class in 2017 and certified as EU Design Category A
More info on paintwork	New hull and superstructure Jotun 2 comp. paint in 2022
Extra info	Fuel purifier / separator
Extra info	Spare engine cooler plates included - FOB Scotland

ACCOMMODATION

Cabins	5
Berths	9
Floor	wood
Aft deck	Large discharge aft deck with 2 ribs+fittings for aux fuel tanks
Heating	central hot water
Heating 2	The boiler can run on diesel or electricity
Air-conditioning	single cycle airco
Navigation center	Fully upgraded in 2021 with the latest Vector Chart Radar system
Chart table	On bridge, books upgraded in 2021



EXPLORER MOTOR YACHT ASTRA

Dining room	yes
Galley	Open to salon
Sink	2 x stainless steel
Cooker	electric
Oven	Electric
Extractor	Bosch
Gas alarm	Heat and smoke detectors Consilium C303
Microwave	Yes
Fridge	2 X 120 L
Freezer	1500 L
Hot water system	220V/engine/heating
Water pressure system	electrical
Dishwasher	Yes
Kettle	Yes
Coffee maker	Yes
Crockery	Yes
Owners cabin	single bed
Wardrobe	hanging/drawers/shelves
Bathroom	separate
Guest cabin 1	twin single
Wardrobe	hanging/drawers/shelves
Bathroom	shared
Guest cabin 2	twin single
Bathroom	shared
Guest cabin 3	bunk bed
Wardrobe	hanging/drawers/shelves
Bathroom	Shared
Guest cabin 4	twin single
Bathroom	En suite
Washing machine	Miele
Extra info	Starlink 50GB / month account included
Extra info	Spare part software included



EXPLORER MOTOR YACHT ASTRA

MACHINERY

No of engines	1
Make	Mitsubishi
Type	S6U-MPTK
HP	1350
kW	993.60
Fuel	diesel
Year installed	1994
Year of overhaul	Overhaul 2021 - full service report available.Last service 2024.
Maximum speed (kn)	11
Cruising speed (kn)	8,4
Consumption (l/hr)	48
Range (nm)	9000
Engine hours	13600
Engine cooling system	freshwater heat exchanger
Drive	shaft
Engine controls	electrical
Gearbox	Finn0y G50 FK, reduction 2.95:1
Secondary engine	diesel Volvo MD 120, 46 kVA, 230/400 V - 5469 hours
Engine controls	electrical
Bowthruster	hydraulic Berg 100 KW
Gearbox	Finn0y G50 FK, reduction 2.95:1
Exhaust	dry
Propeller blades	Berg 4 blade, controllable pitch propeller, 1718 mm
Propeller shaft material	stainless steel
Manual bilge pump	Yes
Electric bilge pump	Yes
Bilge alarm	5
Electrical installation	Overhaul 2021 by Emenasa - full report available
Generator	wet exhaust Onan Marine GenSet,23 kVA (2021)
Running hours generator	1400



EXPLORER MOTOR YACHT ASTRA

Batteries	2 start batteries 12V / 170Ah for Volvo Penta
Service battery	2 X 24V / 180Ah service new 2024
Generator battery	1 start battery 12 V / 120 Ah for Onan
Battery charger	Victron Skylla 24V /50A battery charger.
Inverter	12 X 2V / 1000Ah batteries 2 X 12V / 42Ah radio batteries
Battery charger/inverter	440 V 60Hz to 400 V 50 Hz
Shorepower	with cable Shore connection for American standards.
Watermaker	Enwa MT 6000 SRT, 250 l/ h, 400 V, 2017.
Stabilizers	4 rotor ship stabilizers
Extra info	Furuno BlackBox, TimeZero 120 GB SSD i5. NMEA2000 network. Hatte
Extra info	Air start pressure tanks: 2 x Atlas Copco, 31 .5 bar
Extra info	Shaft generator:Mecc Alte Spa ECS31-LB/4,50 kVA, 230/400V(2021)

NAVIGATION

Compass	2 X Furuno GP39 satellite compass+magnetic Observer Type A, 175
Electric compass	Observer Type A, 175 mm
Depth sounder	Furuno Double frequency
Windset	Furuno
VHF	Sailor 6222 + 2 x Sailor RT 6222 DSC + 2 x Sailor RT 2048
VHF handheld	UHF RETEVIS RT27 x 8 (2020) 2 X GMDSS:Entel HT 649+lcom IC-M71
Autopilot	2 X Simrad AP 70. The backup system independent. Firmware 2024
Rudder angle indicator	Tenfjord
Radar	FAR 1513, FAR 3220 and NXT solid state radar
GPS	Furuno 2 X GP-150 GNSS
Plotter/GPS	BlackBox, TimeZero 120 GB SSD i5. NMEA2000 network
Navtex	Newcom NC-400
Personal computer	Computers onboard belonging to the ship are included



EXPLORER MOTOR YACHT ASTRA

Electronic chart(s)	MaxSea, Time Zero 4 system with a complete worldwide portfolio
AIS receiver	Furuno FA-170 - FA-150 as backup
AIS transponder	yes
Radio receiver	Upgraded in 2021 to GMDSS area A3 (between 70°N and 70°S).
EPIRB	Ocean Signal Ltd (SafeSea E100G) (2020)
Camera	4 cameras (2017)
Navigation lights	EmpirBus system
Searchlight	2 x SEEMATZ, 1 x Norselight
Extra info	Intercom Amplidan Commander 1500 Furuno wave analyzer WV100
Extra info	Sound signalling equipment Kockum Sonics Signal

EQUIPMENT

Cockpit chairs	3 air pressure chairs - new 2021
Anchor	2 x Pool Anchor 184 kg with winch Skarhamns AB
Anchor chain	2 x 110 m, 16mm studless anchor chain
Chain counter	Yes
Windlass	Fwd windlass: Dinamic Oil S.p.A. P9, 15 Tonnes bollard pull
Windlass aft	Dinamic Oil S.p.A. P9, 15 Tonnes bollard pull
Dinghy	rigid inflatable 1 X 5.3m + 1 X 4.2m Ribcrafts commercial deep V rigid inflatable
Deck crane	Forward Crane: 1T Heila HLM, 3.5 Aft Crane: 6T Palfinger PK
Sea railing	aluminum
Grab rail (superstructure)	aluminium Located on all critical spots around the vessel
Railing side opening gates	Starboard and port
Life raft	container 2 X Viking 12 persons (New 2016)
Lifejackets	12
Safety harness	Yes
Horn	air pressure
Fenders	New 2021
Mooring lines	New 2021
Spare parts	Full storage of spares for engines and equipment



EXPLORER MOTOR YACHT ASTRA

Tools	Complete tool sets for full operational capacity
TV	Yes
TV receiver	Yes
Satellite	InmarSat C, Vsat, Fleetbroad band
Radio	VHF/ MF/HF radio
Clock - barometer	Yes
Fire extinguisher	ABC extinguishers and fire blankets located in designated areas
Latest extinguisher survey	2022
Extinguisher in engine room	CO2 - 2 x 45 KG - 10 years revision completed in 2021.
Extra info	Towing hook: Mampaey MXX015, 30/15 t
Extra info	SART McMurdo SMARTFIND (2020)
Extra info	Complete metal work bench with drilling a grinding machines

RIGGING

Extra info	Craddles for IBC fuel tanks
Extra info	IBC with stainless steel frames



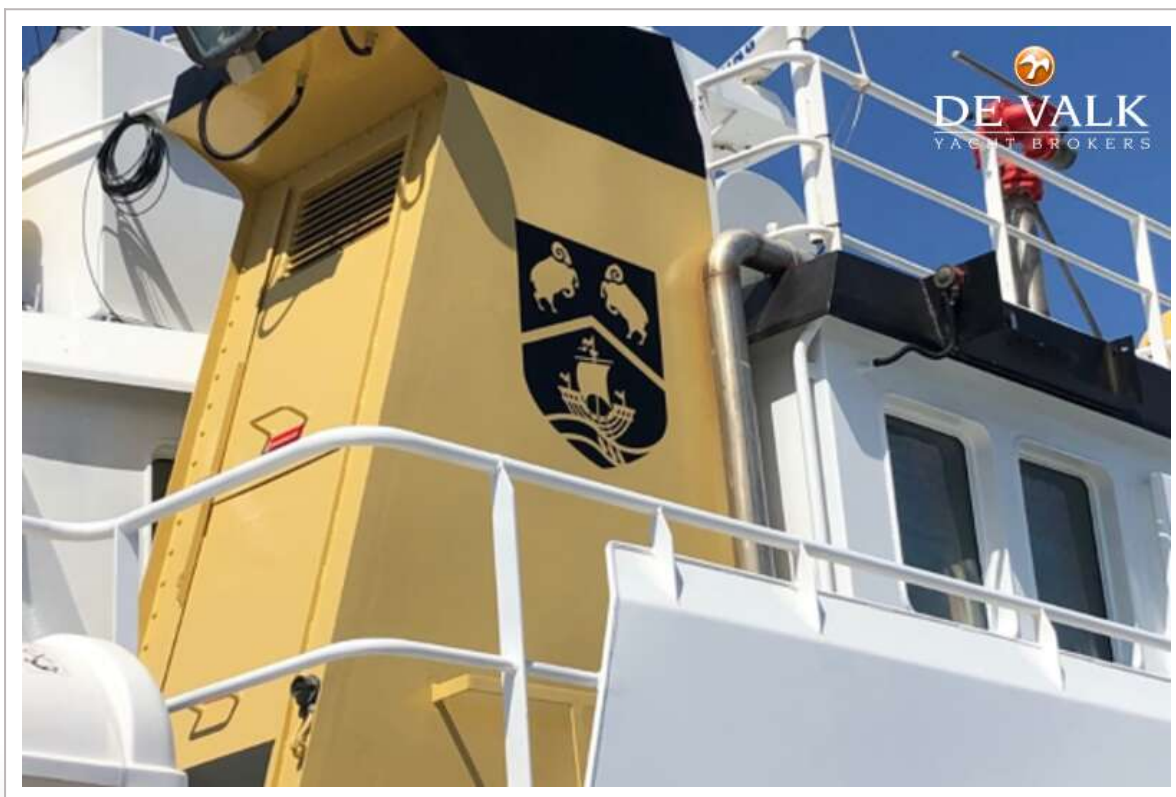
EXPLORER MOTOR YACHT ASTRA



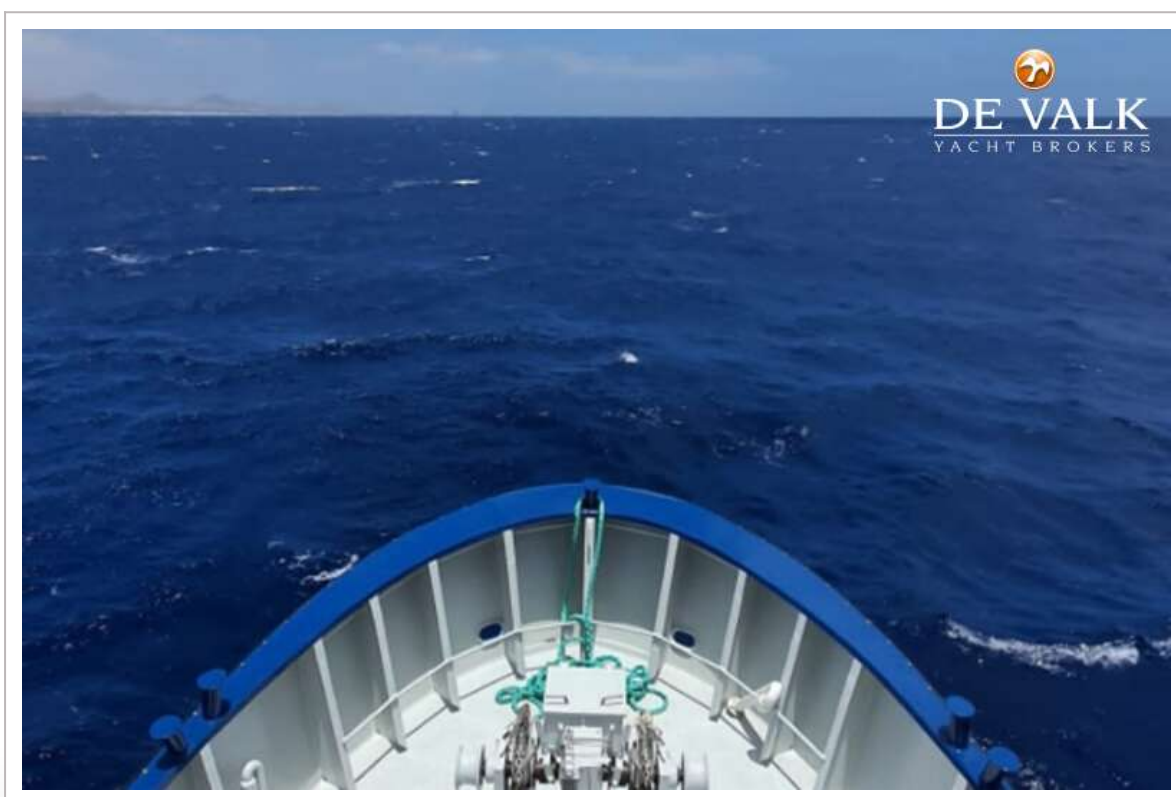
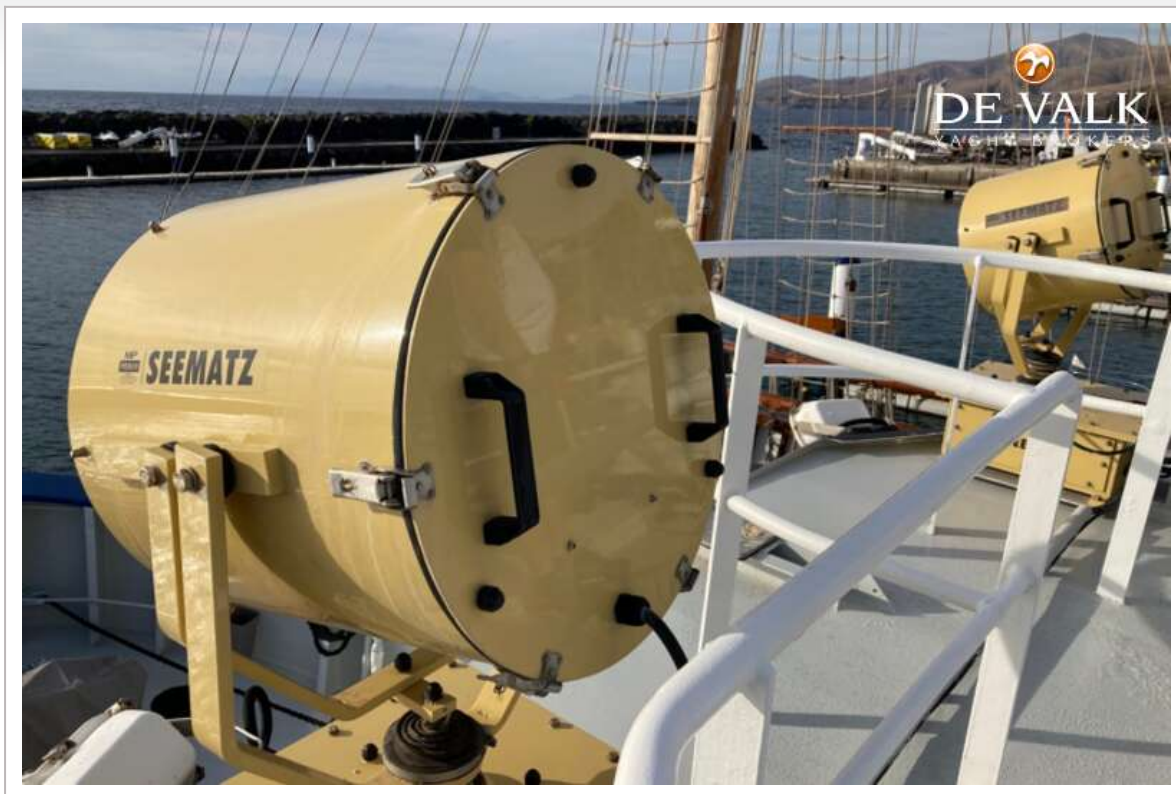
EXPLORER MOTOR YACHT ASTRA



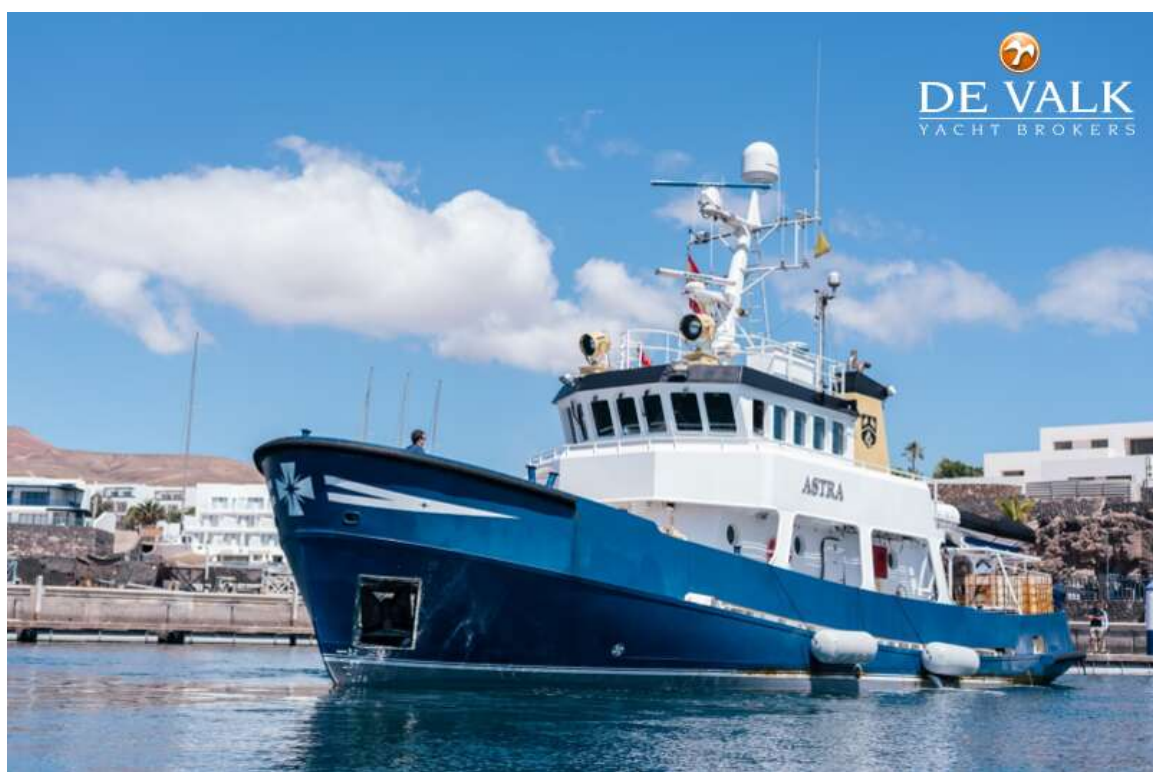
EXPLORER MOTOR YACHT ASTRA



EXPLORER MOTOR YACHT ASTRA



EXPLORER MOTOR YACHT ASTRA



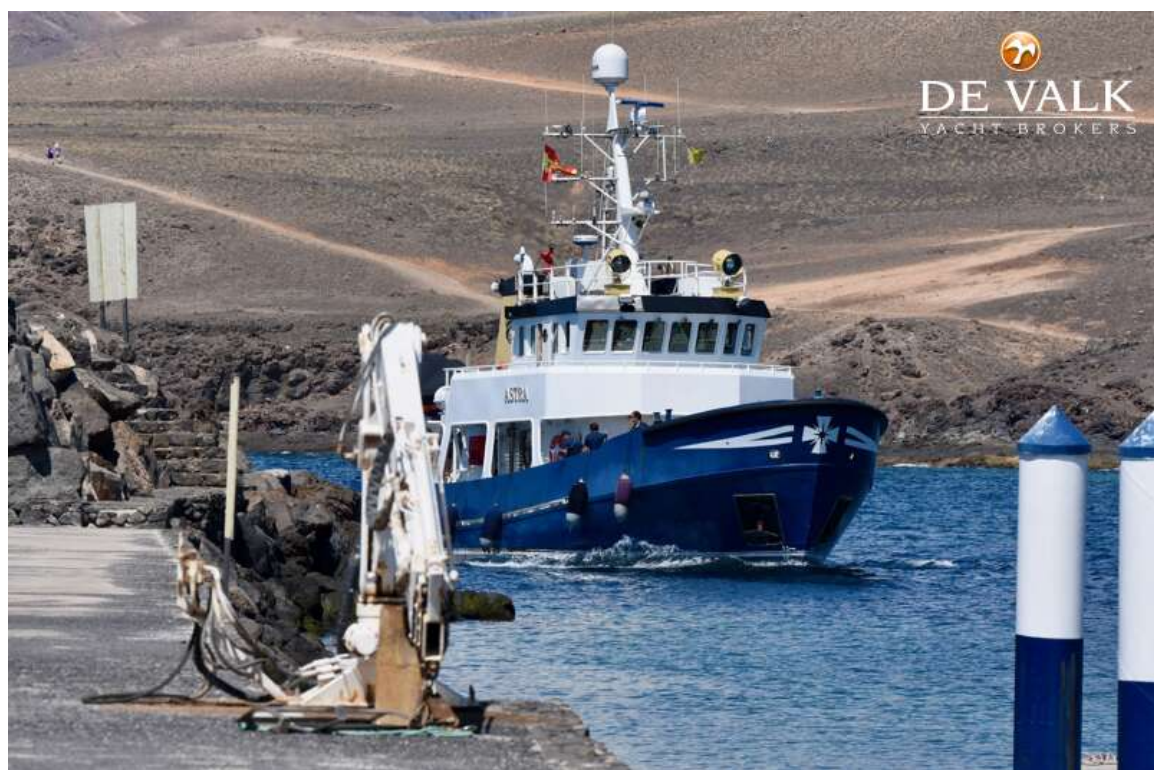
EXPLORER MOTOR YACHT ASTRA



EXPLORER MOTOR YACHT ASTRA



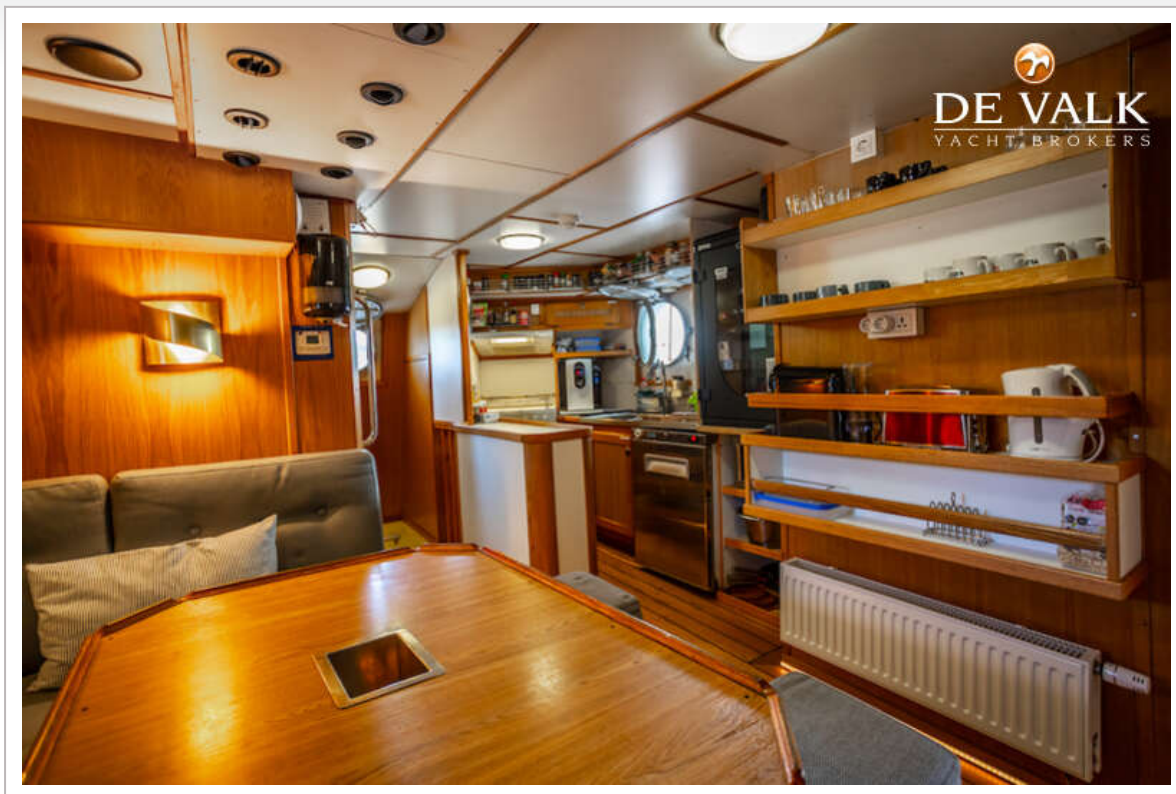
EXPLORER MOTOR YACHT ASTRA



EXPLORER MOTOR YACHT ASTRA



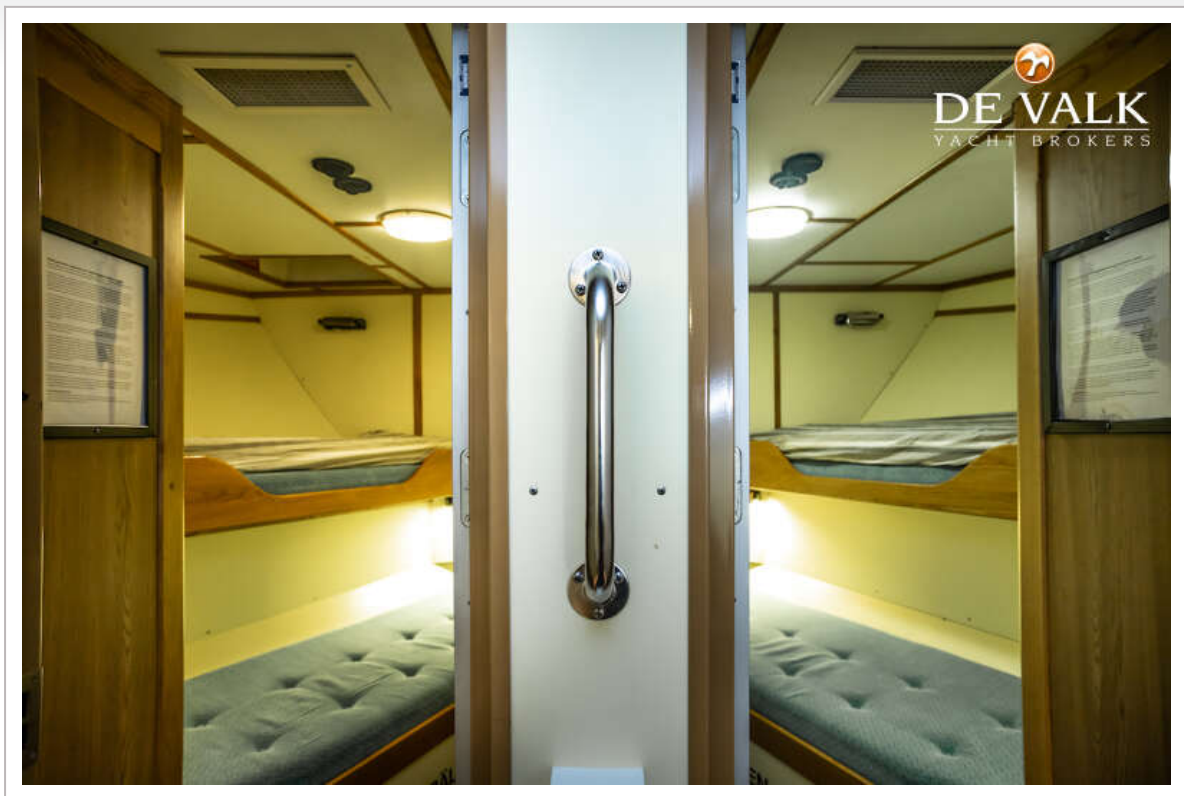
EXPLORER MOTOR YACHT ASTRA



EXPLORER MOTOR YACHT ASTRA



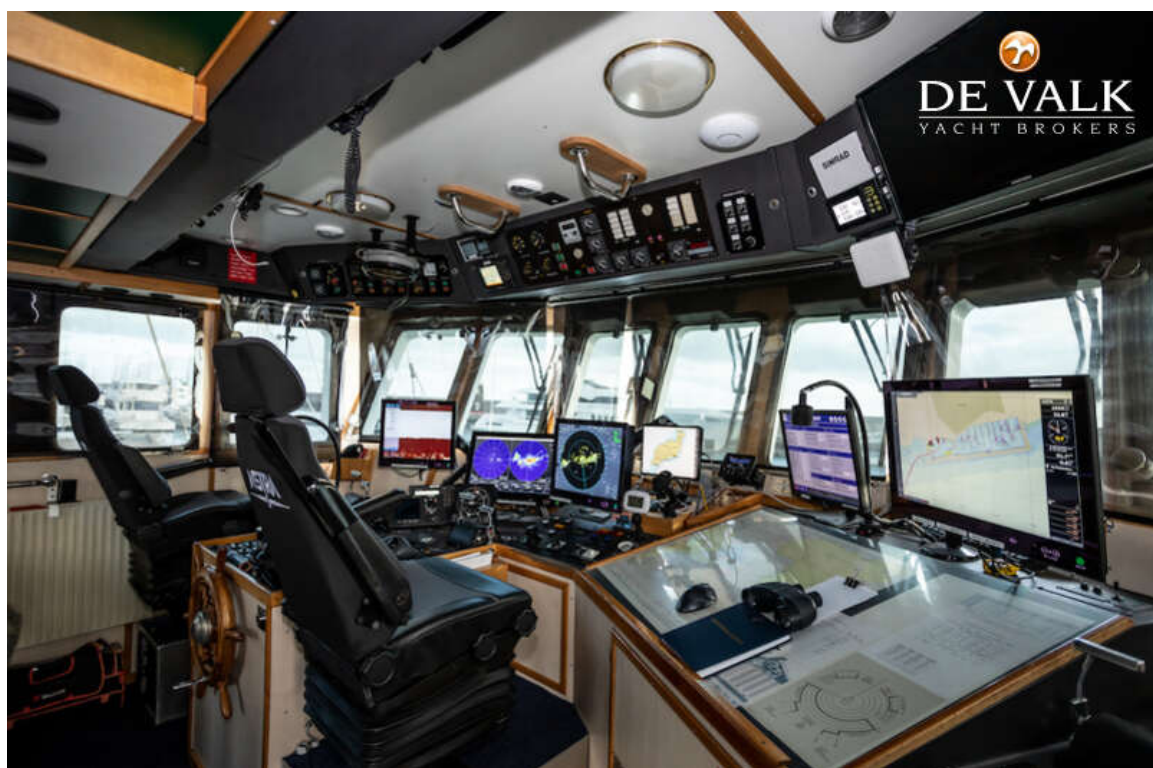
EXPLORER MOTOR YACHT ASTRA



EXPLORER MOTOR YACHT ASTRA



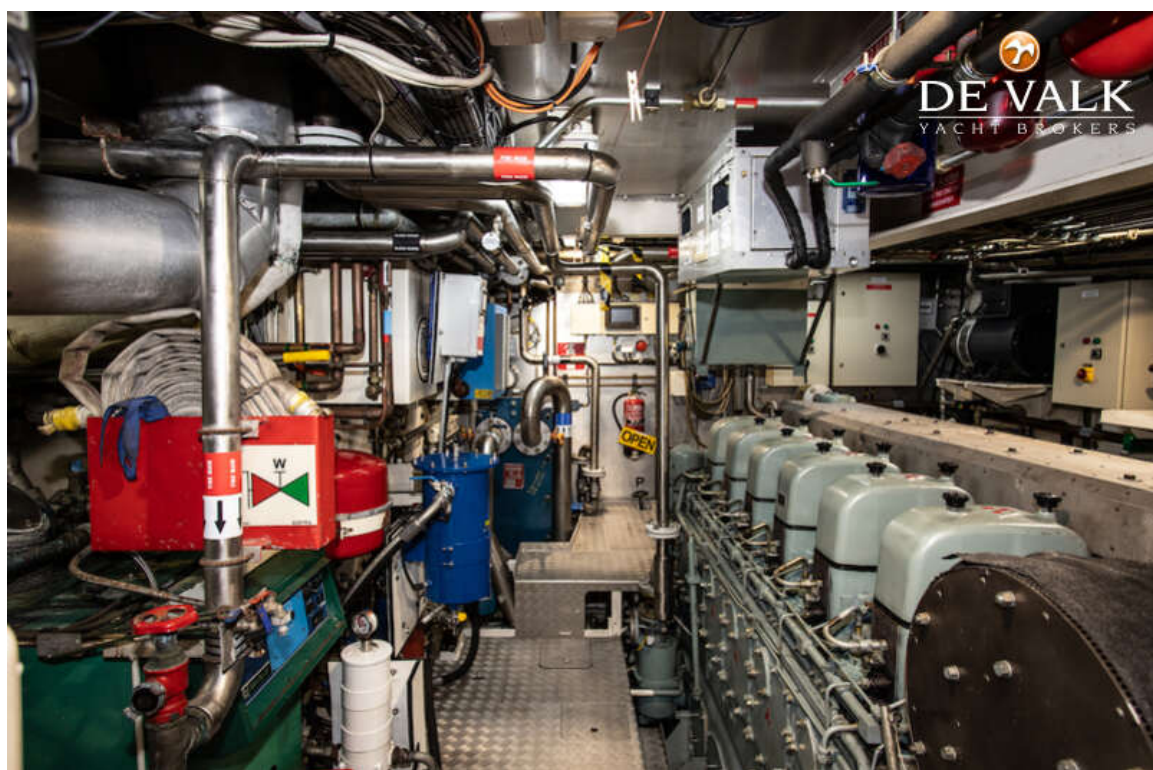
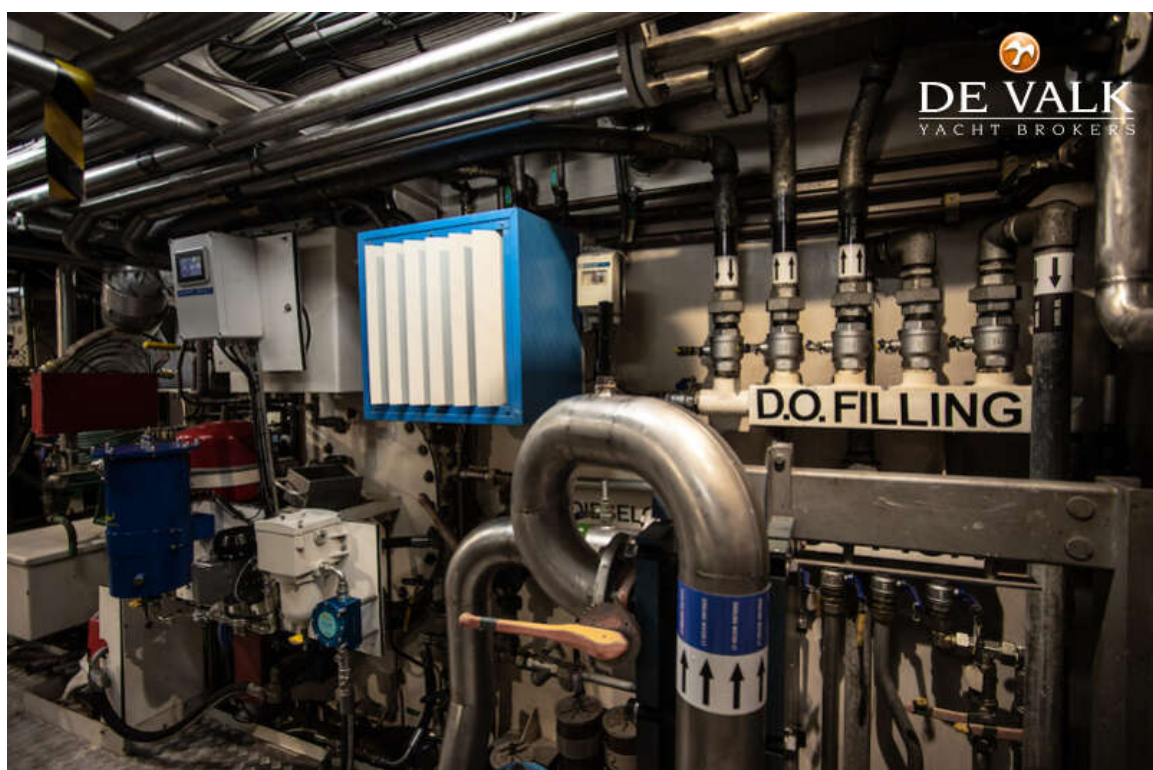
EXPLORER MOTOR YACHT ASTRA



EXPLORER MOTOR YACHT ASTRA



EXPLORER MOTOR YACHT ASTRA



EXPLORER MOTOR YACHT ASTRA

