



DE VALK
YACHT BROKERS



NICOLAAS WITSEN & VIS STEEL 33 M



DE VALK
YACHT BROKERS

BROKER'S COMMENTS

Witsen & Vis was one of the original members of the Feadship association. M/Y RA is the biggest steel yacht built by the shipyard with a luxurious layout with 2 deck levels, built to please the demanding seafarer. The large aft deck leads to the spacious salon and owner's cabin on main deck, with an amazing 270 degree sea view. The large VIP and 2 guest cabins are located on the lower deck. Superb crew accommodation. The hull was overhauled in 2004 and the yacht went through a very large refit in 2018, leaving the interior of high-end standards. A superb yacht.

Tue Simon Fasting

SPECIFICATIONS

Dimensions	33.00 x 6.10 x 3.30 (m)	Builder	Nicolas Witsen & Vis - Alkmaar
Built	1971	Cabins	4
Material	Steel	Berths	8
Engine(s)	2 x MTU 12V493TY71 diesel	Hp/Kw	2 x 1,500.00 (hp), 1,104.00 (kw)
Asking price	€ 1.900.000 (VAT Not paid)	Lying	Spain

CONTACT

Sales office	De Valk Barcelona	Telephone	+34 932 202 825
Address	Barcelona region 08392 Barcelona ES	E-mail	barcelona@devalk.nl

DISCLAIMER

These particulars are given in good faith as supplied but cannot be guaranteed.



GENERAL

Model	NICOLAAS WITSEN & VIS STEEL 33 M
Type	motor yacht
LOA (m)	33,00
Beam (m)	6,10
Draft (m)	3,30
Year built	1971
Launched	Refit 2018
Builder	Nicolas Witsen & Vis - Alkmaar
Country	The Netherlands
Designer	Marc Picaut
Displacement (t)	146
Hull material	steel
Hull colour	Quartz grey and white Awlgrip 2018. Needs repaint soon.
Hull shape	Displacement
Superstructure material	aluminium
Deck material	steel
Deck finish	teak 2018: new teak upper deck Aft main needs work done.
Antifouling (year)	+ anodes 2024
Window frame	stainless steel
Window material	tempered glass
Fuel tank (litre)	steel 15000 in 3 tanks
Level indicator (fuel tank)	yes
Freshwater tank (litre)	4400
Level indicator (freshwater)	yes
Blackwater tank (litre)	yes
Level indicator (blackwater)	yes
Blackwater tank extraction	deck extraction + pump
Greywater tank (litre)	yes
Level indicator (greywater)	yes
Wheel steering	hydraulic



More info on hull

The hull had new hull shell plating added in 2004

More info on paintwork

Few areas need repair

Extra info

2018: replacement of all seavalves

Extra info

Possibility to increase the fuel capacity

ACCOMMODATION

Cabins

4

Berths

8

Crew cabin

3

Crew berths

7

Interior

Exclusive refitted design by Ojinaga. Fendi chairs and more.

Saloon

2018: superstructure extension for upper deck salon

Headroom saloon (m)

2,20

Heating

Webasto controls

Air-conditioning

reverse cycle airco 2018: new unit

Navigation center

On bridge

Chart table

yes

Galley

Lower deck next to the crew quarters, new 2018

Sink

stainless steel

Cooker

electric

Oven

yes

Extractor

yes

Microwave

yes

Fridge

Miele new

Freezer

Miele new

Wine cooler

yes

Hot water system

220V + engine 2018: 2 new water boilers

Water pressure system

electrical

Dishwasher

yes

Kettle

yes

Ice maker

yes



Crockery	yes
Owners cabin	double bed On main deck under bridge with 180 degrees sea view
Wardrobe	hanging/drawers/shelves
Bathroom	en suite
Toilet	en suite
Extra info	Newly furnished
Guest cabin 1	double bed On lower deck mid ship
Wardrobe	hanging/drawers/shelves
Bathroom	en suite
Extra info	Newly furnished
Guest cabin 2	twin single
Wardrobe	hanging/drawers/shelves
Bathroom	en suite
Extra info	Newly furnished
Wardrobe	hanging/drawers/shelves
Extra info	Newly furnished
Guest cabin 4	twin single
Wardrobe	hanging/drawers/shelves
Bathroom	En suite
Extra info	Newly furnished
Crew cabin(s)	3
Bathroom (crew)	1
Washing machine	yes
Dryer	yes
Ironing facilities	yes
Wet bar	yes
Extra info	New day toilet main deck installed in 2018

MACHINERY

No of engines	2
---------------	---



Make	MTU
Type	12V493TY71
HP	1500
kW	1104
Fuel	diesel
Year of overhaul	Full engine revision 2022 and revisions latest revision 2025
Maximum speed (kn)	16
Cruising speed (kn)	9
Engine cooling system	freshwater heat exchanger
Engine controls	electrical
Gearbox	hydraulic
Engine controls	electrical
Bowthruster	hydraulic New 2018
Sternthruster	hydraulic New 2018
Propeller type	fixed
Propeller shaft material	stainless steel
Bilge alarm	yes
Generator	wet exhaust
Generator 2	wet exhaust
Start battery	8 new gel batteries - 2023
Service battery	yes
Shorepower	with cable
Insulation transformer	30KVA 400V/200V
Watermaker	2018: new unit Aqua-base 125l / h
Stabilizers	fin Vosper - need service
Extra info	2018: new transformer 30 KVA 400V / 230V
Extra info	2018: replacement of all hydraulic and sewage piping
Extra info	Racor 751000MAX water separators

NAVIGATION

Compass	yes
----------------	-----



Electric compass	yes
Multi control display	2 X Simrad NSO EVO2
Depth sounder	Simrad
Log	yes
Windset	IS20
Fish finder	Simrad
VHF	ICOM, M504
VHF handheld	yes
Autopilot	Simrad AP48 Simrad OP40
Rudder angle indicator	yes
Radar	Simrad 25KW new
Radar/GPS/plotter	2 X Simrad NSO EVO2
Personal computer	yes
PC connection	yes
Wifi antenna	New internal WIFI system
Electronis chart(s)	yes
AIS receiver	yes
AIS transponder	yes
EPIRB	ACR Electronics, Global fix
Camera	New CCTV
Navigation lights	New Lopo lights
Searchlight	2 X Marine Sport Line
Extra info	The navigation equipment was replaced in 2018

EQUIPMENT

Bathing platform	yes
Gangway	yes
Anchor	2018: new stainless steel anchor protection plates
Anchor chain	190 m galvanized steel
Windlass	yes
Capstan	yes



Deck wash	yes
Dinghy	2 tenders semi rigid
Deck crane	1500 kg
Life raft	2
Life raft (pers)	18
Last life raft survey	2025
Lifejackets	12
Lifebuoy	yes
Window heating	yes
Horn	yes
Spare parts	yes
Tools	yes
Alarm system	Ziton fire alarm system
TV	2018: new A/V systems in all areas. New LOEWE TV's
TV receiver	TracVision
Satellite	Mini VSAT broadband
Fire extinguisher	In all sections revised 2025
Extinguisher in engine room	2018: new Co2 system
Auto extinguisher system	yes

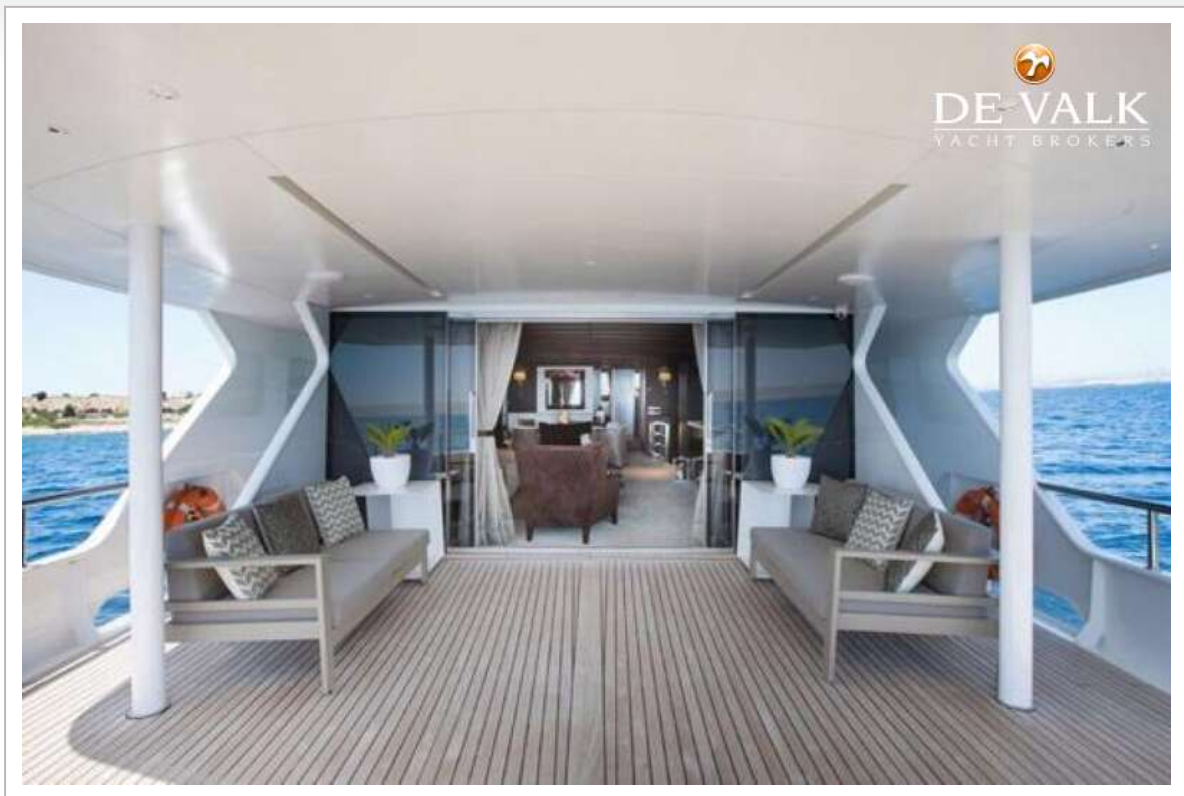




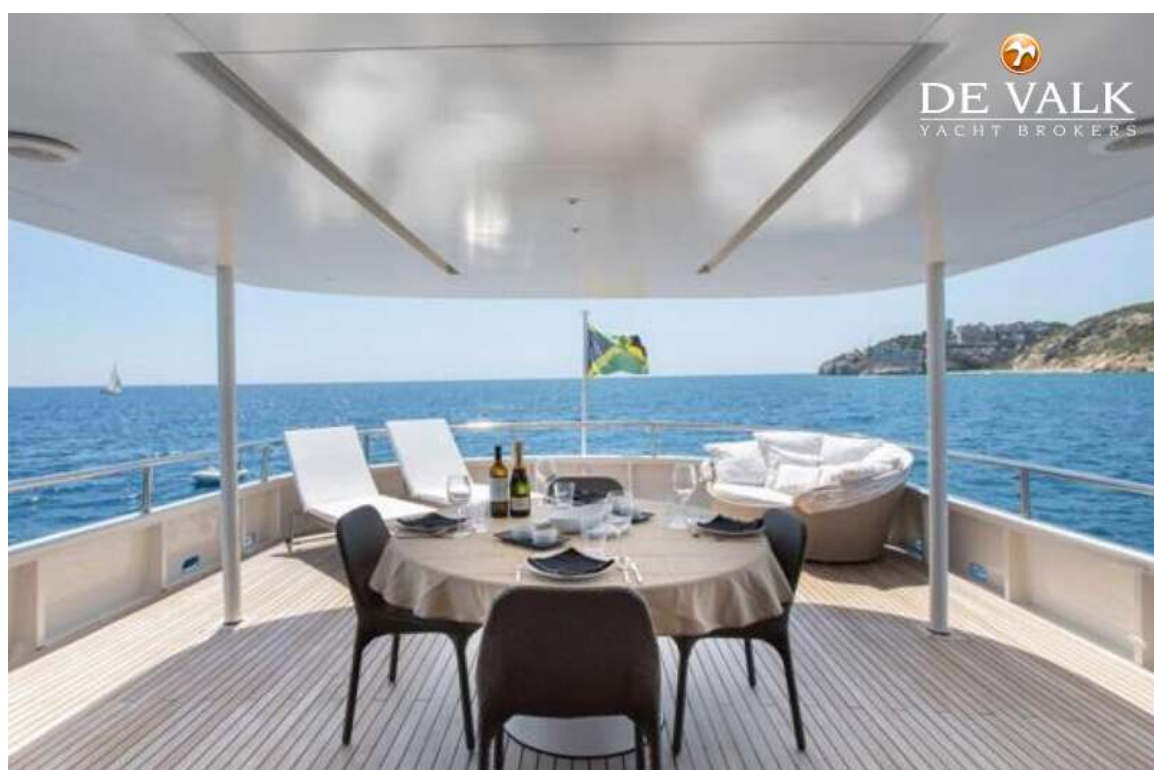
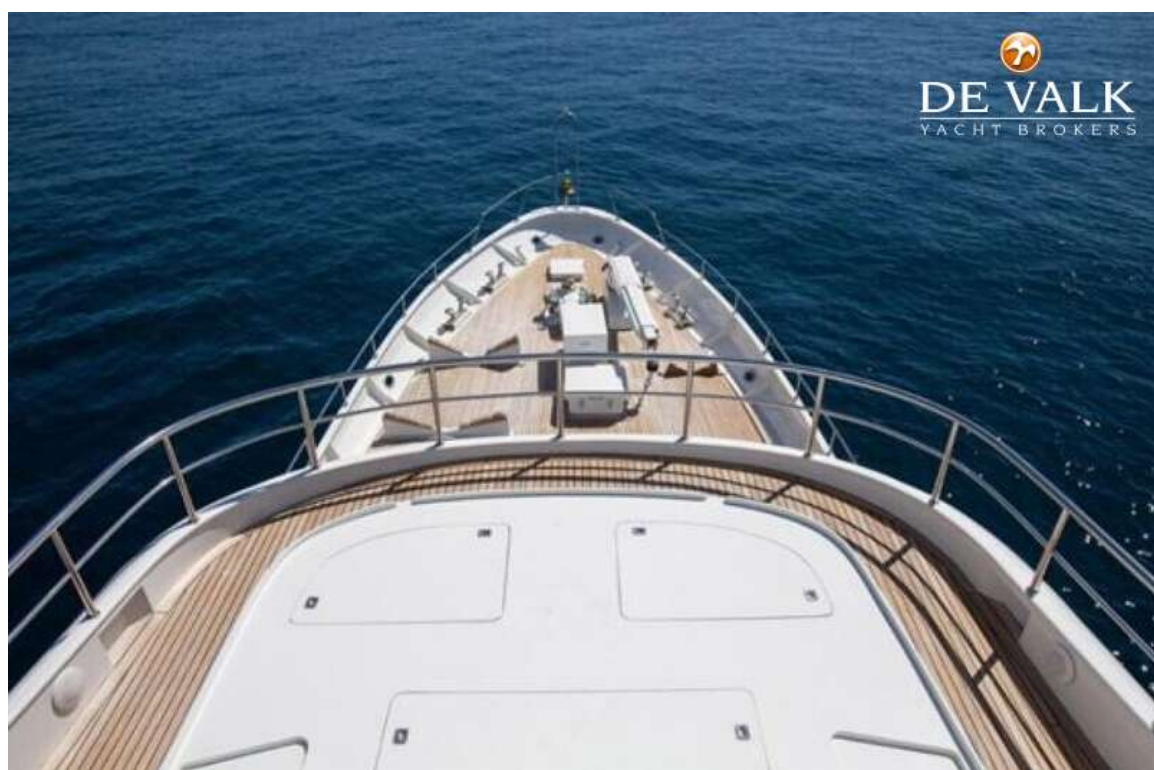
NICOLAAS WITSEN & VIS STEEL 33 M

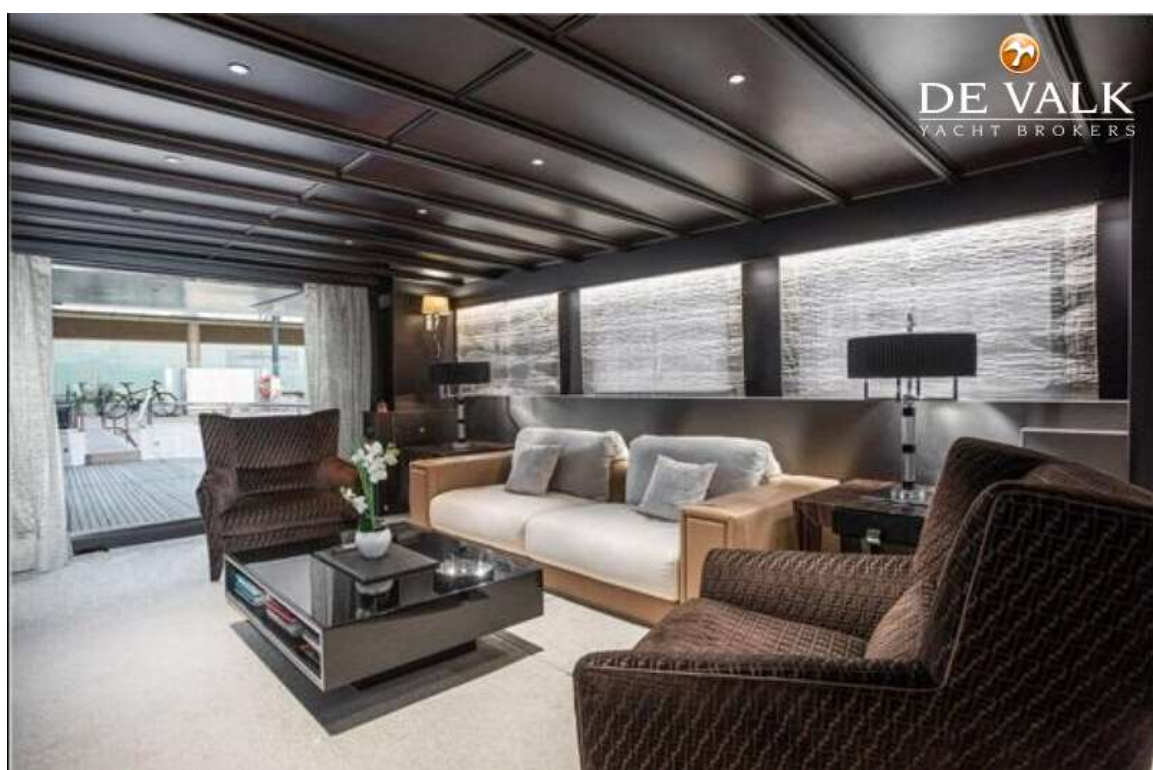
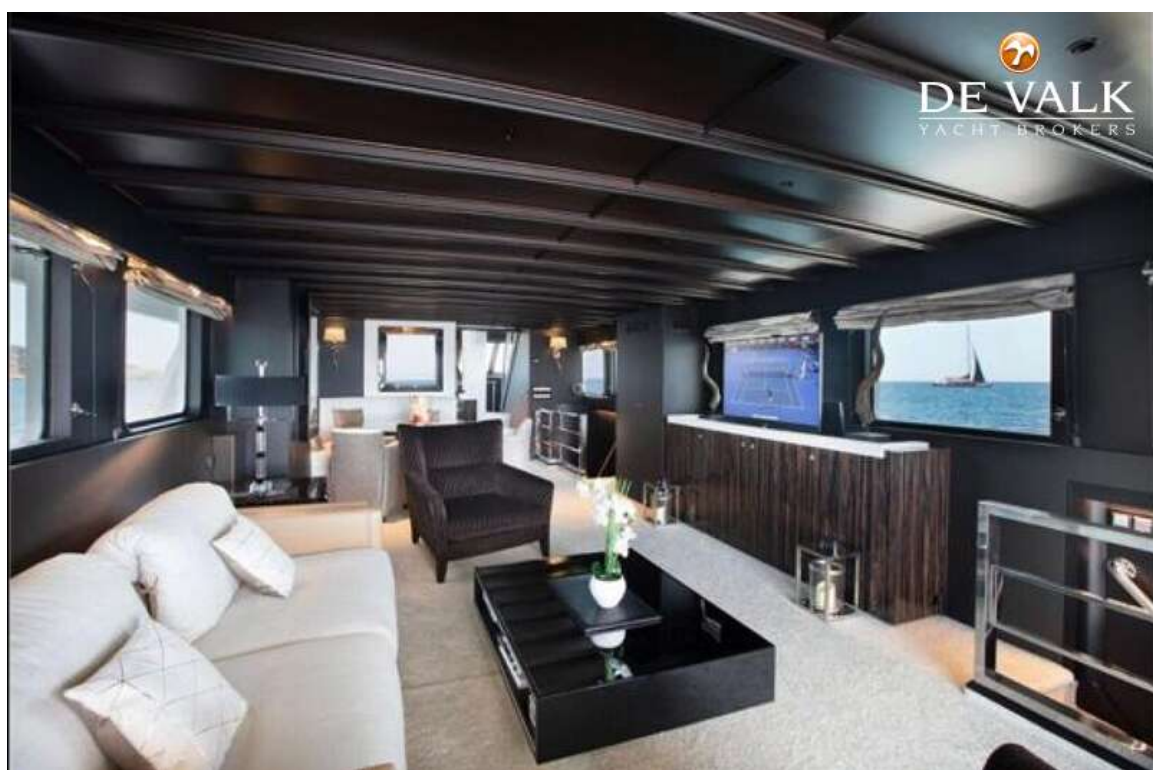


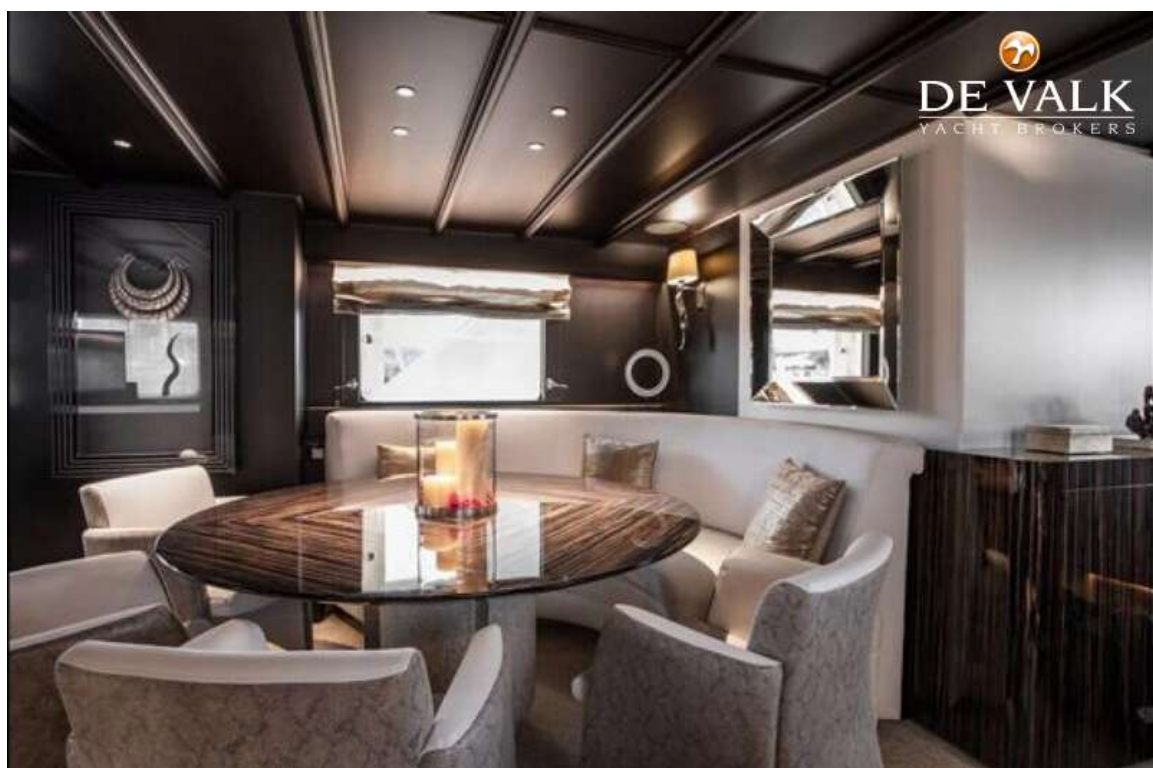
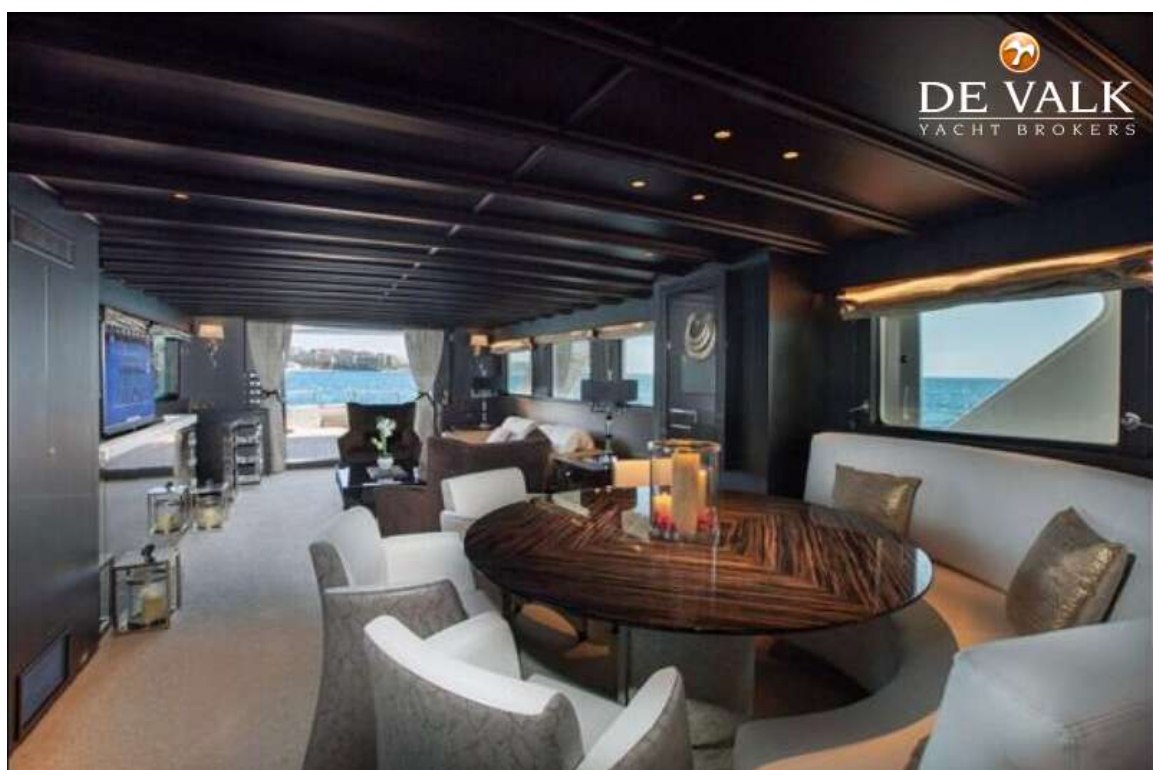
NICOLAAS WITSEN & VIS STEEL 33 M











NICOLAAS WITSEN & VIS STEEL 33 M



