



SEA RAY 370 SUNDANCER



DE VALK
YACHT BROKERS

SEA RAY 370 SUNDANCER

BROKER'S COMMENTS

This wonderful Sea Ray 370 Sundancer offers superb 1990s style and design that holds the test of time. Launched in the US in 1995, she is ideal for those looking for a combination of speed, adventure, comfort and reliability. With 2 double cabins and a convertible double dinette area, she accommodates 6 comfortably, and with her twin Mercruiser 8.1L engines cruising the Mediterranean with friends and family is an absolute joy. Well worth a visit!

Edward Bentley

SPECIFICATIONS

Dimensions	11.47 x 3.84 x 0.81 (m)	Builder	Sea Ray
Built	1995	Cabins	2
Material	GRP	Berths	8
Engine(s)	2 x Mercruiser 8.1L HO petrol	Hp/Kw	2 x 425.00 (hp), 312.80 (kw)
Asking price	sold (VAT)	Lying	at sales office

CONTACT

Sales office	De Valk Barcelona	Telephone	+34932202825
Address	Barcelona region Barcelona Spain	E-mail	barcelona@devalk.nl

DISCLAIMER

These particulars are given in good faith as supplied but cannot be guaranteed.



SEA RAY 370 SUNDANCER

GENERAL

Model	SEA RAY 370 SUNDANCER
Type	motor yacht
LOA (m)	11,47
Beam (m)	3,84
Draft (m)	0,81
Headroom (m)	2,00
Year built	1995
Launched	1995
Builder	Sea Ray
Country	U.S.A.
CE norm	B
Hull material	GRP
Hull colour	white
Hull shape	deep-V
Superstructure material	GRP
Deck material	GRP
Fuel tank (litre)	stainless steel 1041
Freshwater tank (litre)	265
Level indicator (freshwater)	yes
Wheel steering	yes

ACCOMMODATION

Cabins	2
Berths	8
Floor	carpet
Air-conditioning	reverse cycle airco
Dinette to convert into berth	Folding sofa
Sliding door to cockpit	yes
Galley	yes
Countertop	plastic GRP



SEA RAY 370 SUNDANCER

Sink	Corian
Cooker	electric 3 burner
Extractor	yes
Microwave	Microwave / cooker combi; Siemens 220v
Fridge	2 (cockpit and galley)
Freezer	Vitrifrigo (2019 - in galley)
Hot water system	220V + engine
Ice maker	Non electric ice box
Owners cabin	double bed
Bed length (m)	2.00 x 1.50
Wardrobe	hanging/drawers/shelves
Bathroom	shared
Toilet	shared
Toilet system	electric Electric vacuum Vacuflush-Sealand
Wash basin	in the bathroom
Shower	shared
Guest cabin 1	double bed
Wardrobe	hanging and drawers

MACHINERY

No of engines	2
Make	MerCruiser
Type	8.1L HO
HP	425
kW	312.80
Fuel	petrol
Year installed	2012
Maximum speed (kn)	32/34
Cruising speed (kn)	21-24
Engine hours	390 & 401
Engine cooling system	freshwater heat exchanger



SEA RAY 370 SUNDANCER

Drive	shaft
Saildrive seal	Lasdrop 1-1/2" - 2-1/2" (2022)
Engine controls	mechanical
Gearbox	hydraulic ZF63-IV 2.00
Bowthruster	electric JET HMP (2014)
Sternthruster	electric Exturn-180 (2014)
Exhaust	watercooled
Propeller type	fixed
Propeller blades	18x21 - 4 blade (2022)
Propeller shaft material	stainless steel
Shaft lubrication	water
Electric bilge pump	4
Bilge alarm	yes
Electrical installation	12V/220V
Generator	MASE 2.0Kw Diesel (separate fuel tank)
Start battery	2x 170A (2019)
Service battery	1x 170A (2019)
Generator battery	Victron PB 12V/800CCA/90Ah (2019)
Bowthruster battery	2xOPTIMA GEL 12V-75A YellowTop (2019)
Solar panel	4x 100w
Shorepower	with cable
Trimtabs	yes
NAVIGATION	
Compass	Sea Ray original
Multi control display	Raymarine C97 Multifunction/Navionics
Depth sounder	Raymarine
VHF	ICOM fija (2018) + Sportnav SP-36M portátil
Autopilot	B&G Smart Pilot (w/compass+hidraulic pump)
Rudder angle indicator	Sea Ray original
Radar	Raymarine RD418HD 4kw 18HD Digital Radome



SEA RAY 370 SUNDANCER

GPS	Raymarine C3-9D-MFD/Chart Fish Combo
AIS receiver	Raymarine AIS350 Receiver
EPIRB	ACR Globalfix V4 (automatic - 60 MN) (2018)
Camera	Engine room
Searchlight	Halogen

EQUIPMENT

Fixed windscreen	Yes (w/electric sliding window)
Bimini	yes
Cockpit cushions	yes
Cockpit table	yes
Cockpit chairs	yes
Transom door	yes
Anchor	Rope + danforth
Windlass	electrical
Outboard support	Removable from bathing platform
Sea railing	stainless steel
Grab rail (superstructure)	stainless steel
Pushpit	yes
Life raft	Plastimo 60MN
Life raft (pers)	4
Wiper	yes
Horn	yes
Radar reflector	yes
Fenders	yes
Mooring lines	yes
TV	Sunstech 14" w/DWD (2013) & Hitachi 24" Smart TV 12v (2021)
TV receiver	Glomex (2017)
Radio-cd player	yes
DVD player	Clarion
Cockpit speakers	yes



SEA RAY 370 SUNDANCER

Speakers in salon	yes
Speakers in cabin	yes
Fire extinguisher	yes
Extra info	Inlet shore water



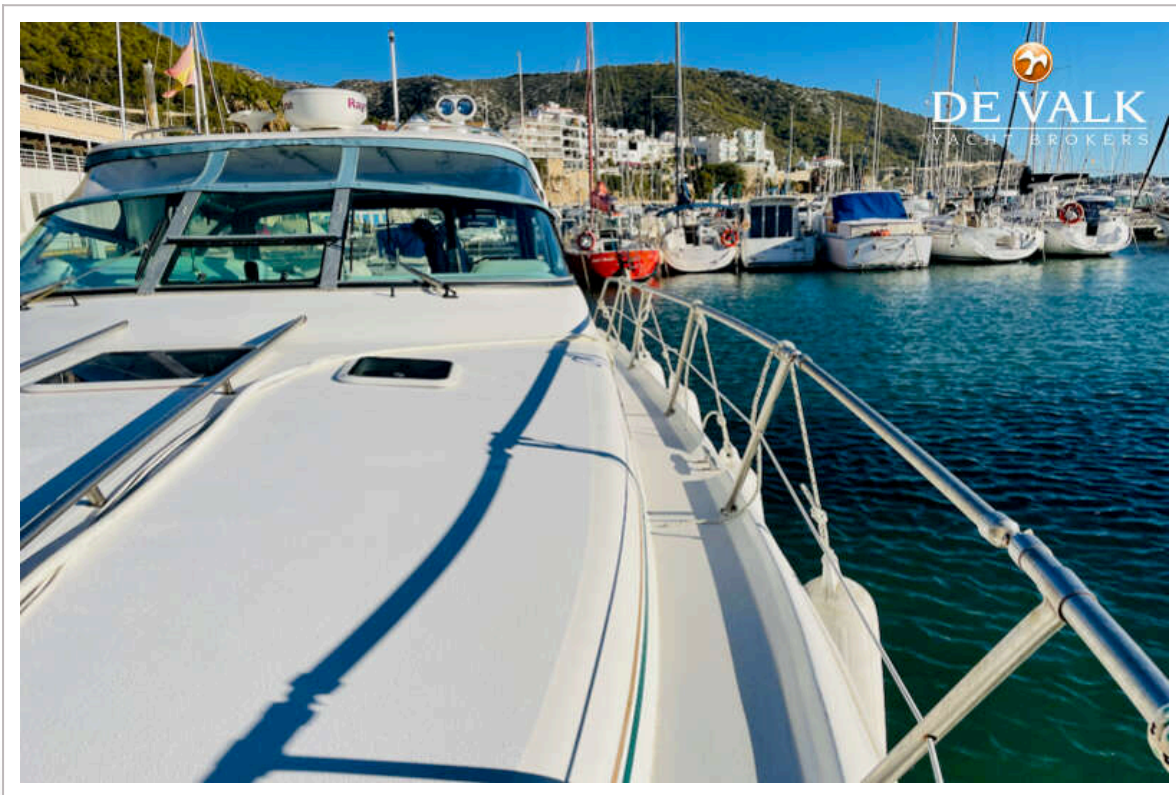
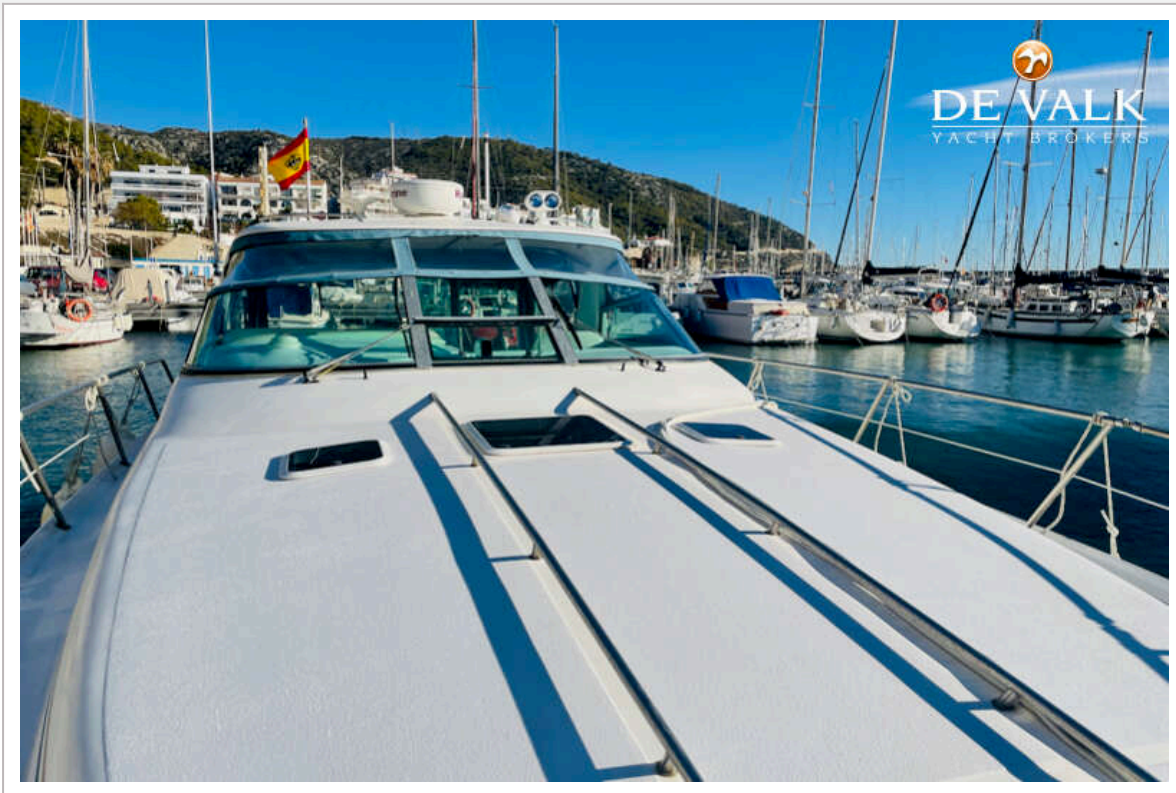
SEA RAY 370 SUNDANCER



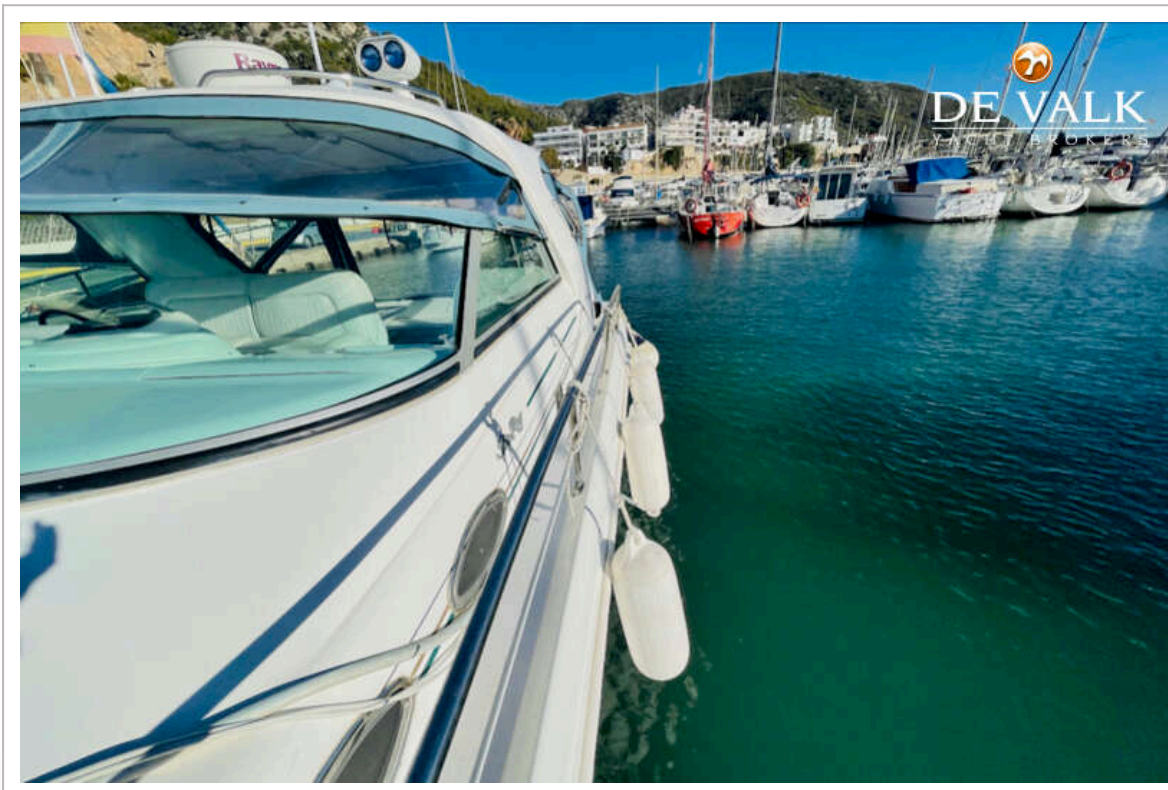
SEA RAY 370 SUNDANCER



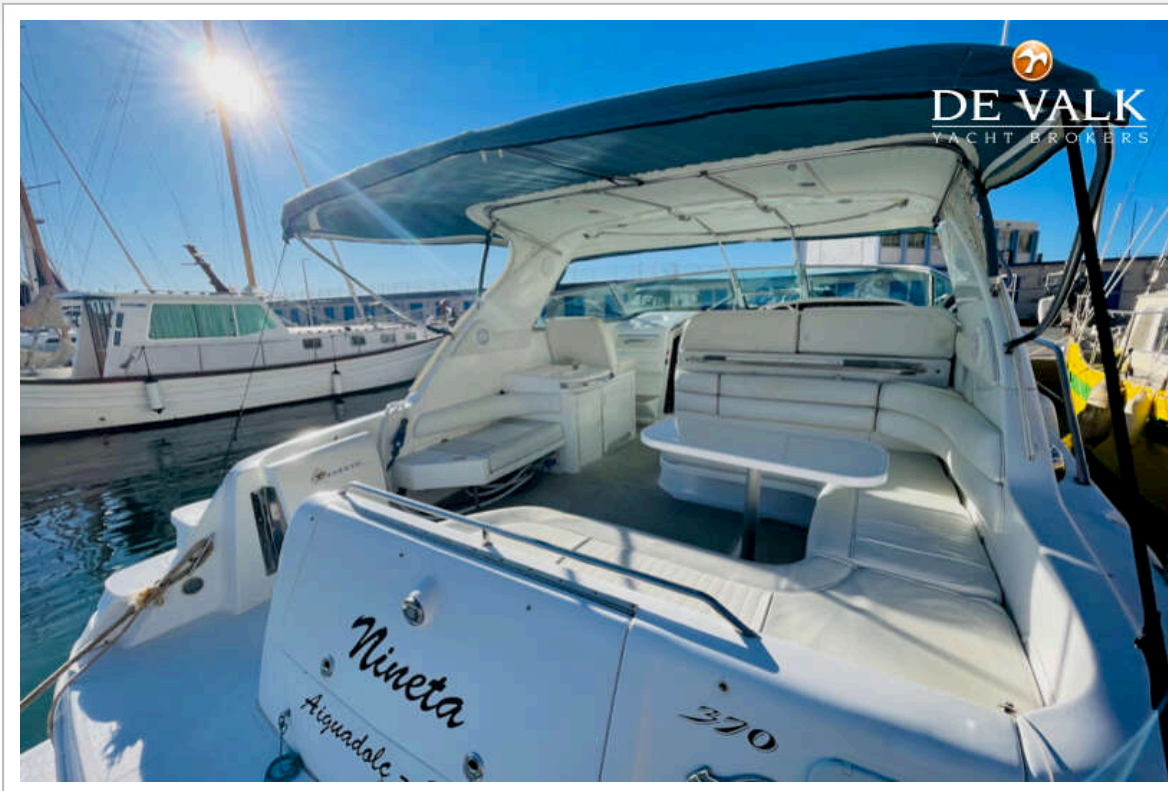
SEA RAY 370 SUNDANCER



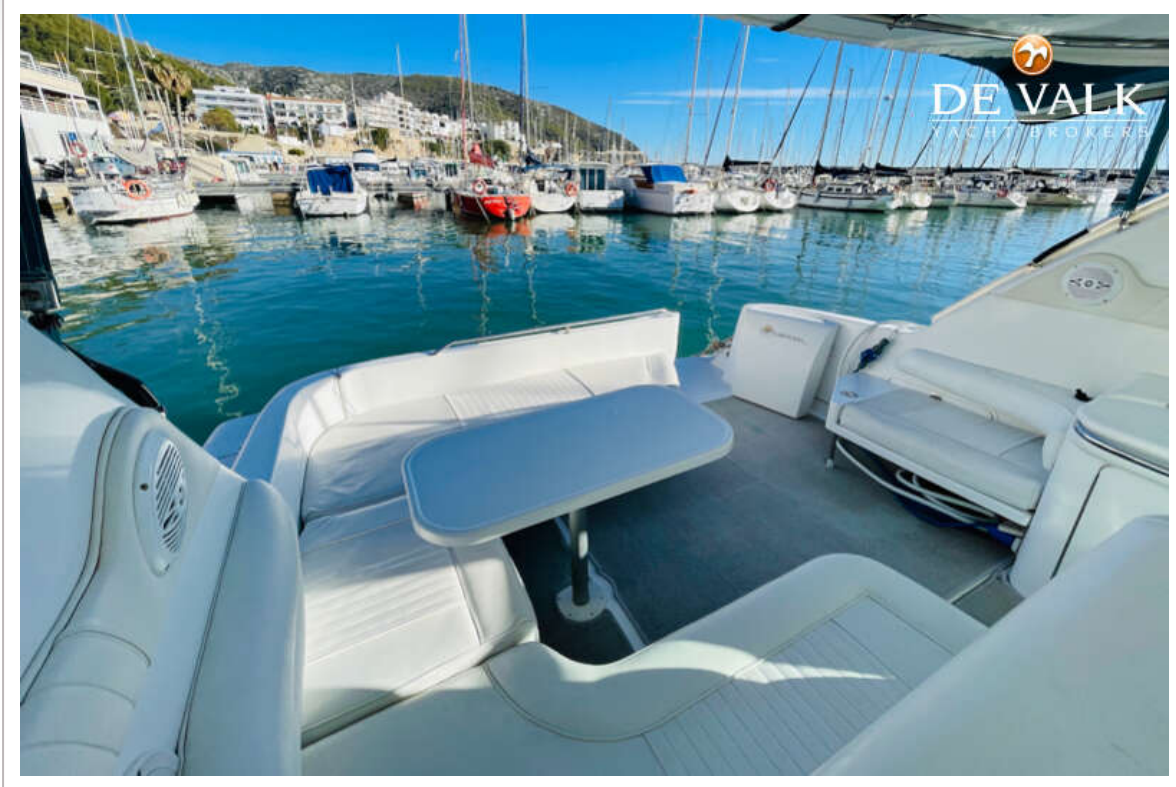
SEA RAY 370 SUNDANCER



SEA RAY 370 SUNDANCER



SEA RAY 370 SUNDANCER



SEA RAY 370 SUNDANCER



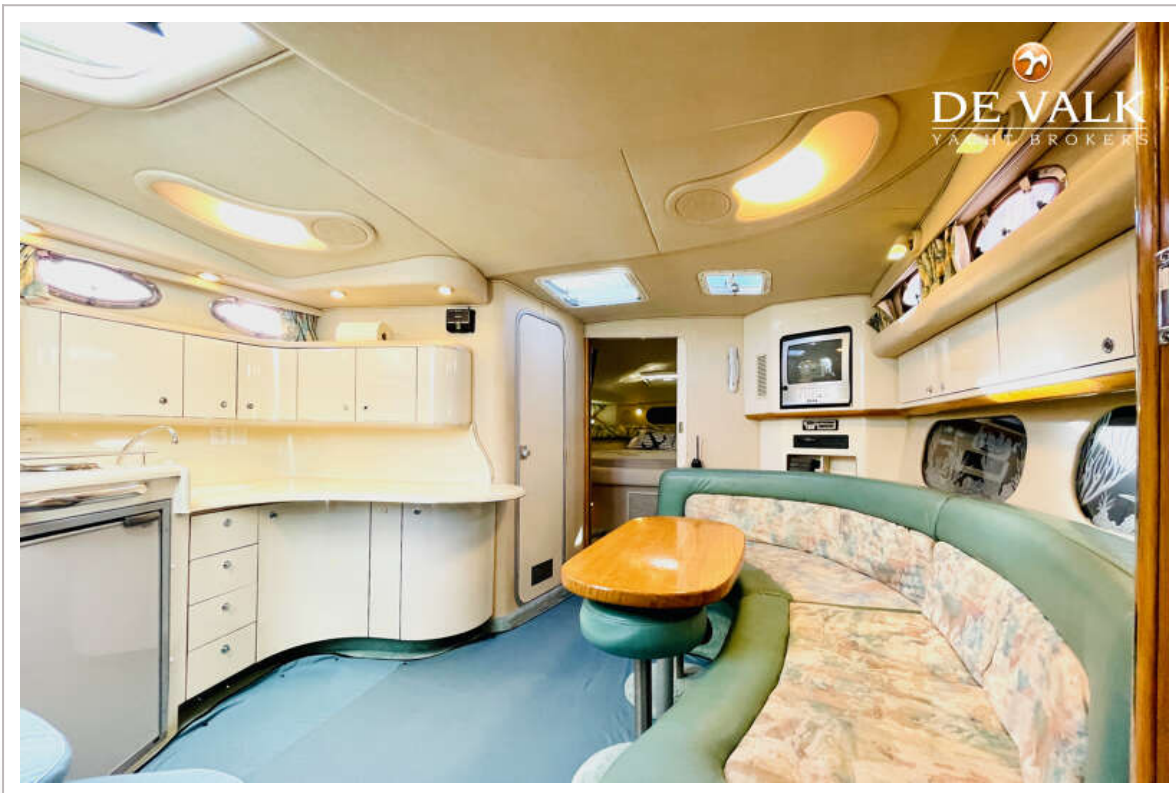
SEA RAY 370 SUNDANCER



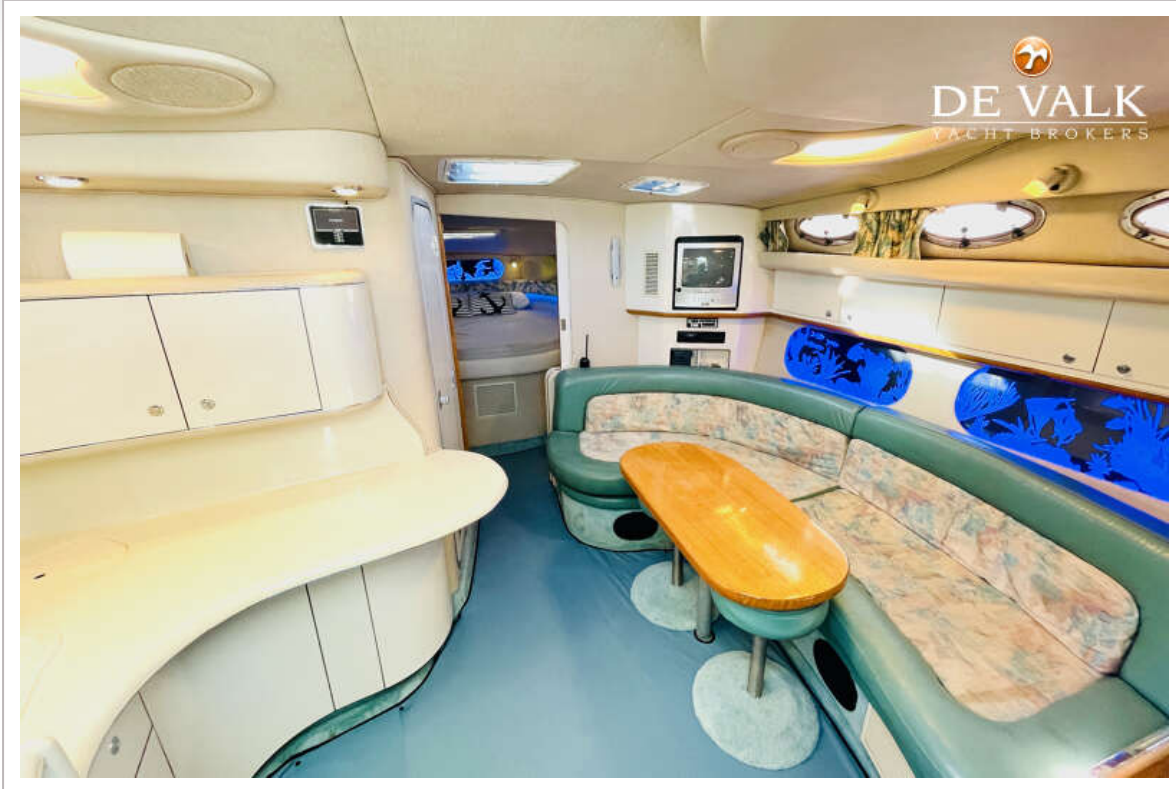
SEA RAY 370 SUNDANCER



SEA RAY 370 SUNDANCER



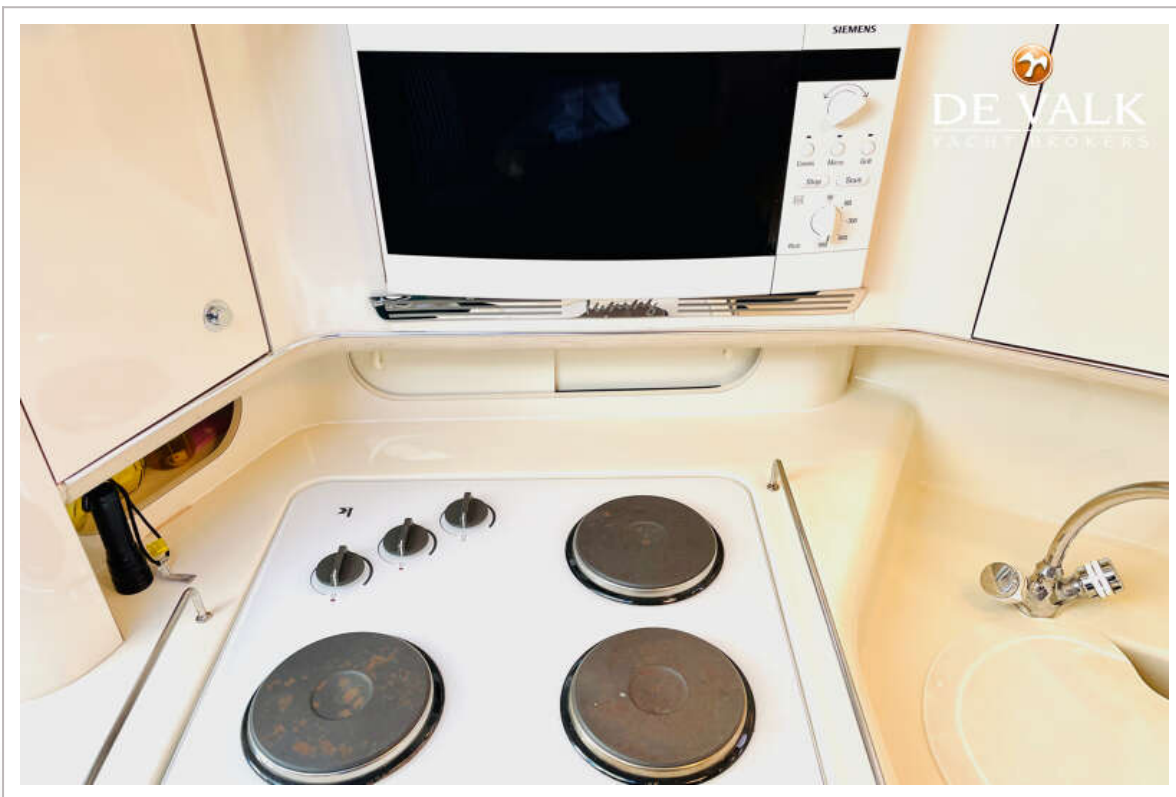
SEA RAY 370 SUNDANCER



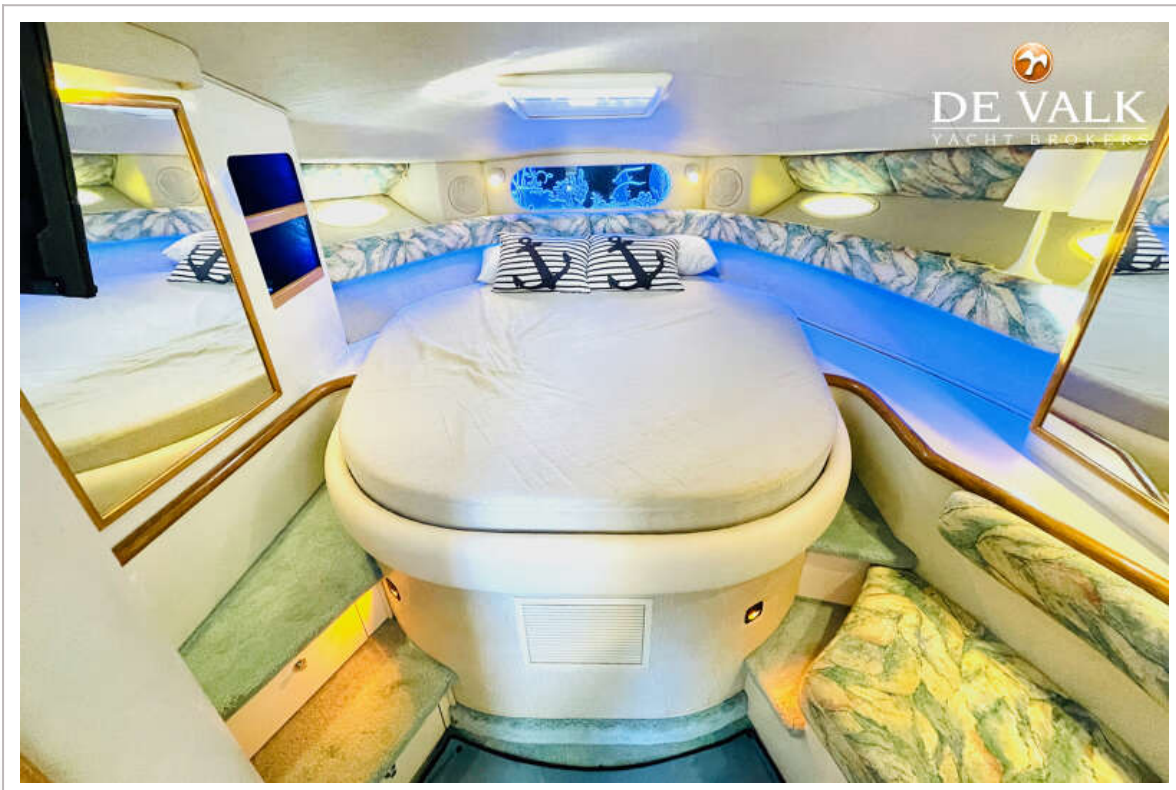
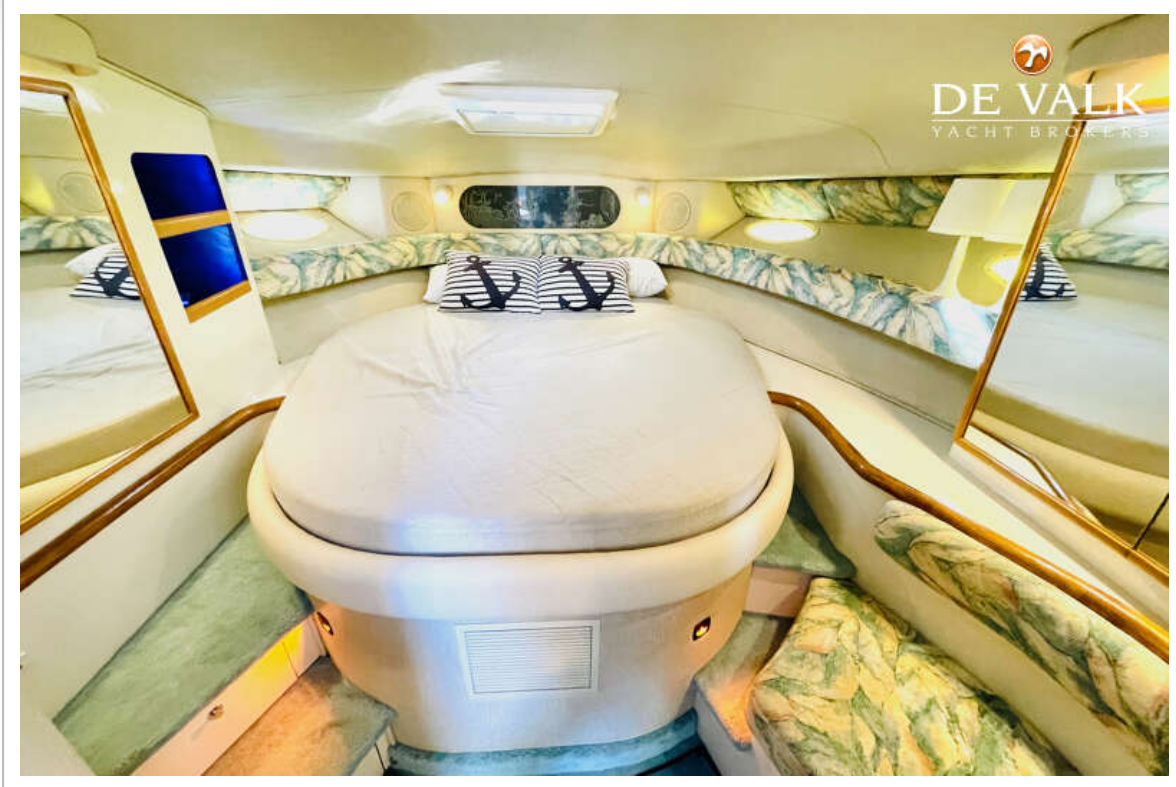
SEA RAY 370 SUNDANCER



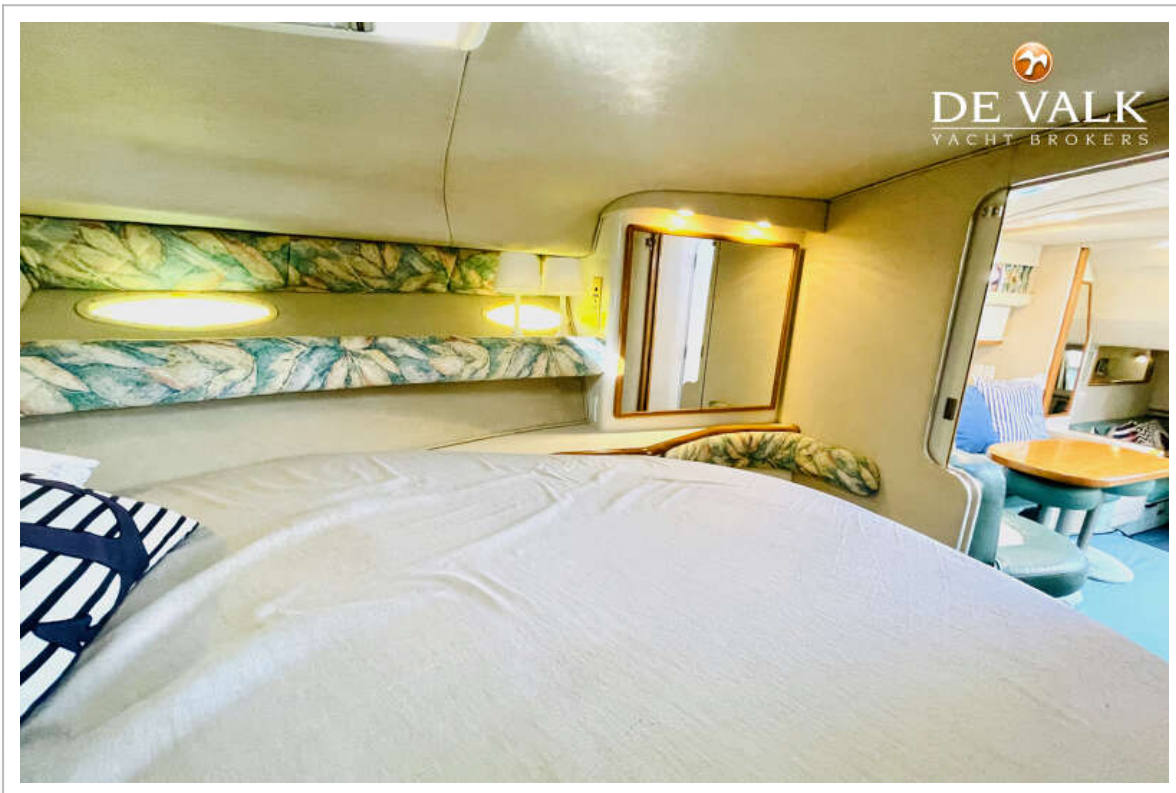
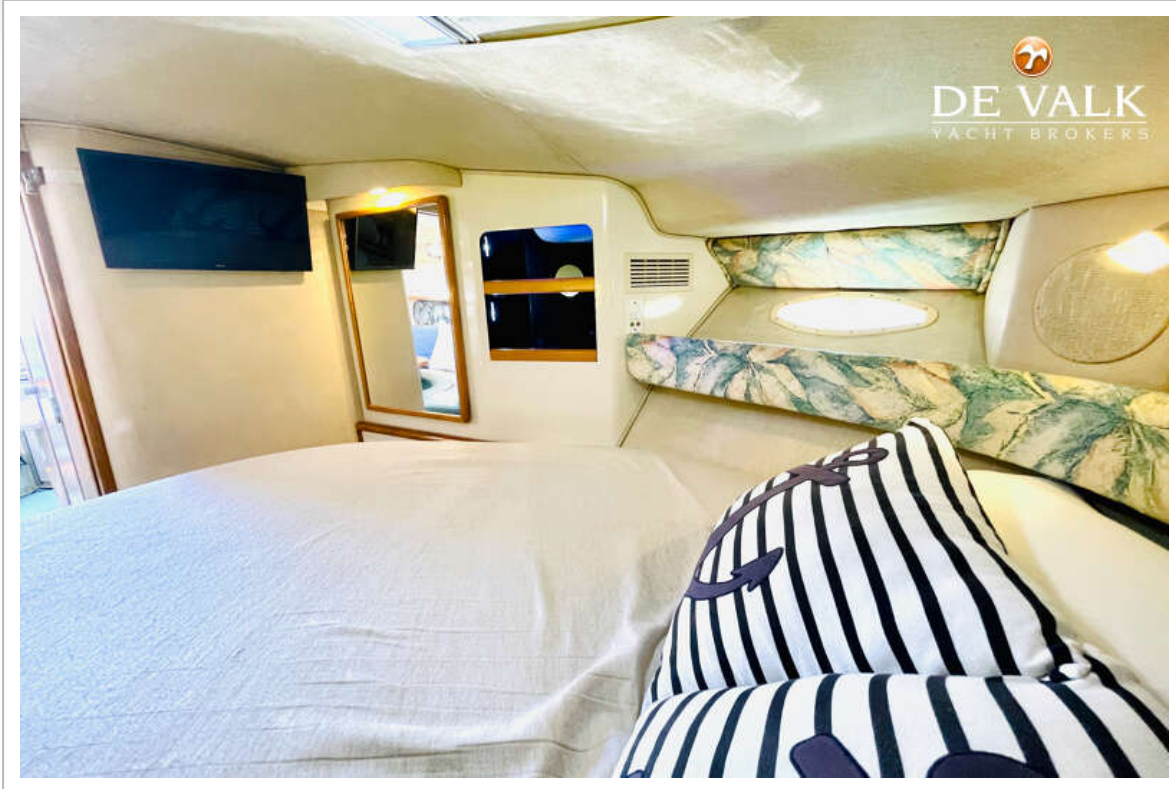
SEA RAY 370 SUNDANCER



SEA RAY 370 SUNDANCER



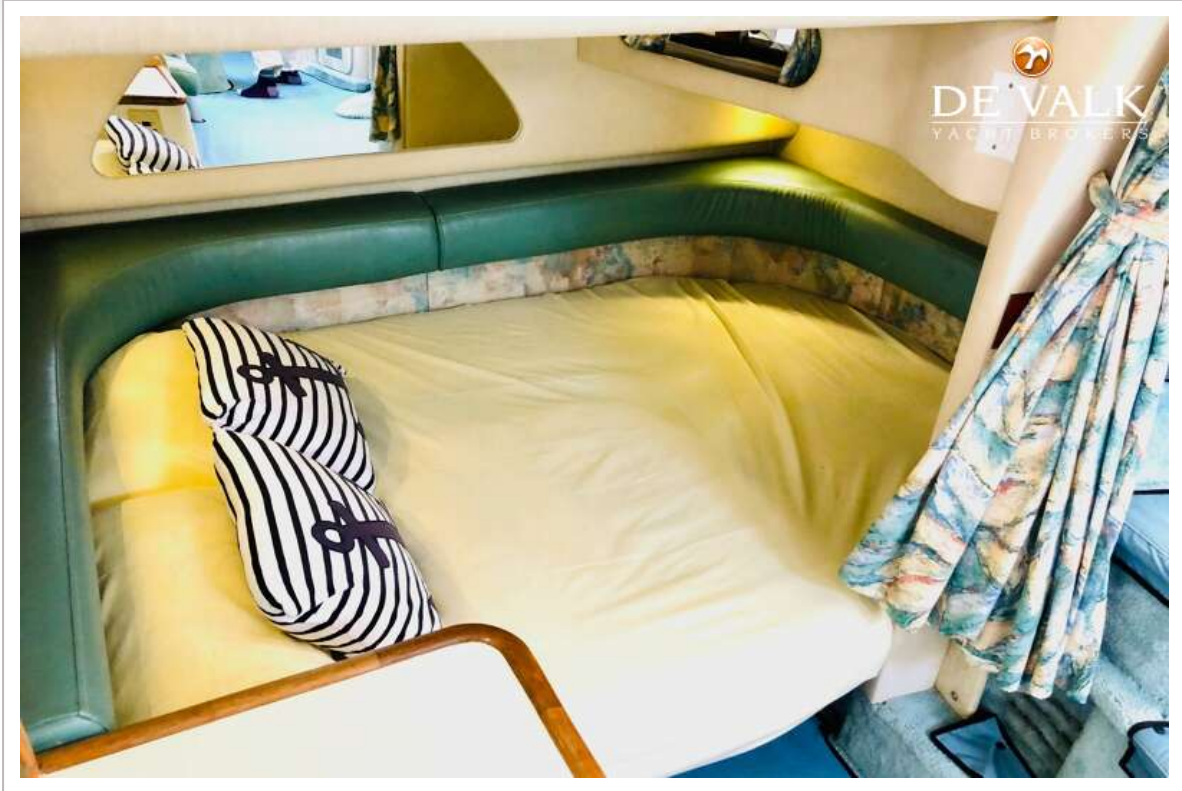
SEA RAY 370 SUNDANCER



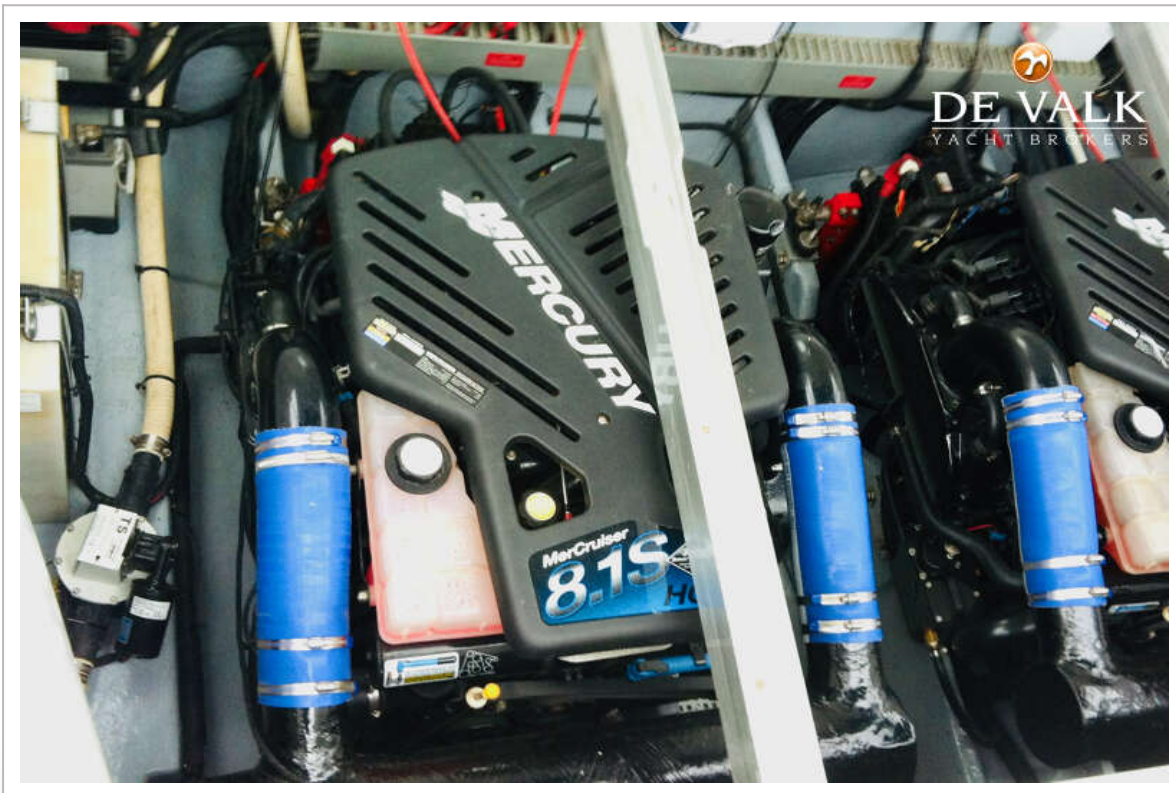
SEA RAY 370 SUNDANCER



SEA RAY 370 SUNDANCER



SEA RAY 370 SUNDANCER



SEA RAY 370 SUNDANCER

